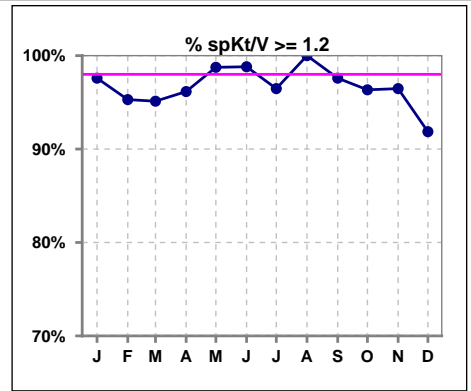
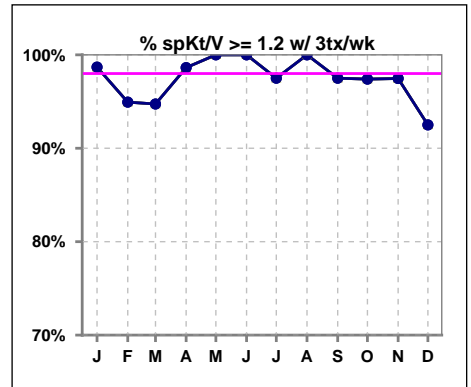


**I. ADEQUACY OF DIALYSIS**

	Jan	Feb	Mar	Apr	May	Jun	Jul	Aug	Sep	Oct	Nov	Dec
# spKt/V	83	85	82	78	80	84	85	84	83	82	85	86
# spKt/V >= 1.2	81	81	78	75	79	83	82	84	81	79	82	79
Pop. Mean	1.59	1.58	1.67	1.59	1.68	1.63	1.62	1.61	1.70	1.61	1.59	1.57
Std. Deviation	0.26	0.29	0.31	0.28	0.25	0.27	0.27	0.23	0.27	0.26	0.27	0.30
% spKt/V >= 1.2	98%	95%	95%	96%	99%	99%	96%	100%	98%	96%	96%	92%

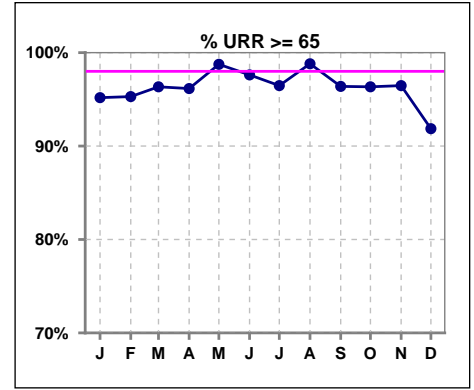


	Jan	Feb	Mar	Apr	May	Jun	Jul	Aug	Sep	Oct	Nov	Dec
# spKt/V w/ 3tx/wk	76	79	76	73	76	80	80	80	80	77	79	80
# spKt/V >= 1.2 w/3tx/wk	75	75	72	72	76	80	78	80	78	75	77	74
Pop. Mean	1.59	1.58	1.67	1.60	1.69	1.64	1.63	1.61	1.70	1.60	1.59	1.57
Std. Deviation	0.24	0.29	0.29	0.26	0.24	0.27	0.25	0.22	0.27	0.24	0.26	0.29
% >= 1.2 w/3tx/wk	99%	95%	95%	99%	100%	100%	98%	100%	98%	97%	97%	93%

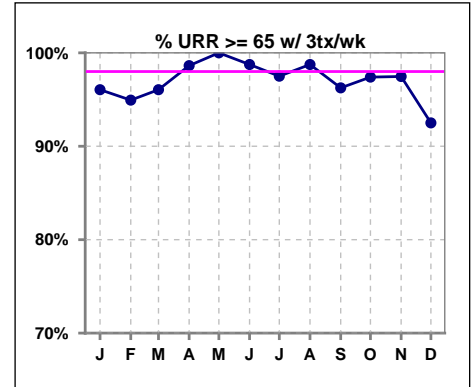


**I. ADEQUACY OF DIALYSIS - CONT.**

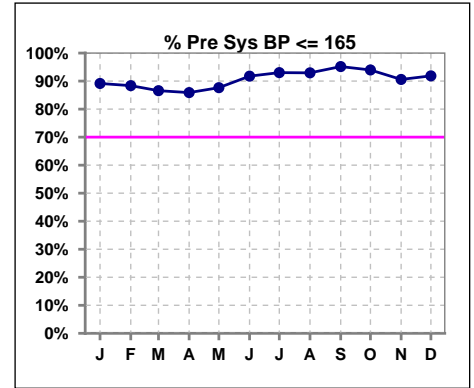
	Jan	Feb	Mar	Apr	May	Jun	Jul	Aug	Sep	Oct	Nov	Dec
# URR	83	85	82	78	80	84	85	84	83	82	85	86
# URR >= 65	79	81	79	75	79	82	82	83	80	79	82	79
Pop. Mean	75	74	76	75	77	76	75	75	77	75	75	74
Std. Deviation	5.46	6.14	5.92	5.82	5.08	5.42	5.54	4.70	5.46	5.65	6.49	7.39
% URR >= 65	95%	95%	96%	96%	99%	98%	96%	99%	96%	96%	96%	92%



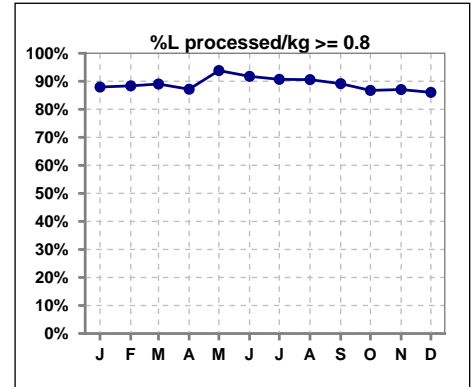
	Jan	Feb	Mar	Apr	May	Jun	Jul	Aug	Sep	Oct	Nov	Dec
# URR w/ 3tx/wk	76	79	76	73	76	80	80	80	80	77	79	80
# URR>=65 w/ 3tx/wk	73	75	73	72	76	79	78	79	77	75	77	74
Pop. Mean	75	75	77	75	77	76	76	75	77	75	75	74
Std. Deviation	5.22	6.11	5.71	5.29	4.84	5.10	5.22	4.46	5.38	5.41	6.38	7.37
% URR>=65 w/ 3tx/wk	96%	95%	96%	99%	100%	99%	98%	99%	96%	97%	97%	93%



	Jan	Feb	Mar	Apr	May	Jun	Jul	Aug	Sep	Oct	Nov	Dec
# Pre Sys BP	83	86	82	78	81	85	86	85	83	83	85	86
# Pre Sys BP <= 165	74	77	71	67	71	78	80	79	79	78	77	79
Pop. Mean	143	144	144	146	144	137	137	138	138	139	141	142
Std. Deviation	18.9	18.1	19.6	19.5	19.3	19.7	18.8	18.6	18.8	19.7	21.5	20.6
% Pre Sys BP <=165	89%	88%	87%	86%	88%	92%	93%	93%	95%	94%	91%	92%



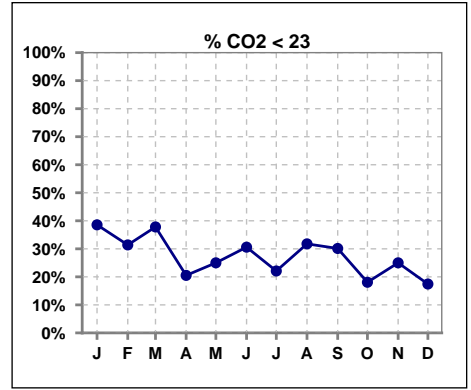
	Jan	Feb	Mar	Apr	May	Jun	Jul	Aug	Sep	Oct	Nov	Dec
# L processed/kg	83	86	82	78	81	85	86	85	83	83	85	86
# L processed/kg>=0.8	73	76	73	68	76	78	78	77	74	72	74	74
Pop. Mean	1	1	1	1	1	1	1	1	1	1	1	1
Std. Deviation	0.3	0.3	0.3	0.3	0.3	0.3	0.3	0.3	0.3	0.3	0.3	0.3
% L processed/kg>=0.8	88%	88%	89%	87%	94%	92%	91%	91%	89%	87%	87%	86%



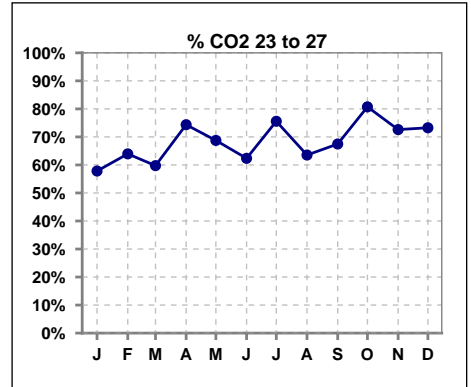
Methodology: a) All labs for 'Adequacy of Dialysis', 'Nutrition', 'Osteodystrophy', 'Anemia' and 'Diabetes' based on last value of month; b) BP's and #L processed are average of all values for month; c) Access data takes last access of month; d) Values for SGA and 'Infection Control' use most recent result.

**I. ADEQUACY OF DIALYSIS - CONT.**

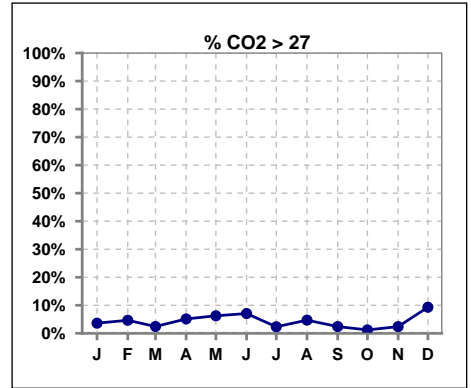
	Jan	Feb	Mar	Apr	May	Jun	Jul	Aug	Sep	Oct	Nov	Dec
# CO2	83	86	82	78	80	85	86	85	83	83	84	86
# CO2 < 23	32	27	31	16	20	26	19	27	25	15	21	15
Pop. Mean	23	24	23	24	24	24	24	24	23	24	24	24
Std. Deviation	2.00	2.08	1.96	2.00	2.21	2.37	2.06	2.34	1.93	1.84	2.22	2.50
% CO2 < 23	39%	31%	38%	21%	25%	31%	22%	32%	30%	18%	25%	17%



	Jan	Feb	Mar	Apr	May	Jun	Jul	Aug	Sep	Oct	Nov	Dec
# CO2	83	86	82	78	80	85	86	85	83	83	84	86
# CO2 23 to 27	48	55	49	58	55	53	65	54	56	67	61	63
Pop. Mean	23	24	23	24	24	24	24	24	23	24	24	24
Std. Deviation	2.00	2.08	1.96	2.00	2.21	2.37	2.06	2.34	1.93	1.84	2.22	2.50
% CO2 23 to 27	58%	64%	60%	74%	69%	62%	76%	64%	67%	81%	73%	73%



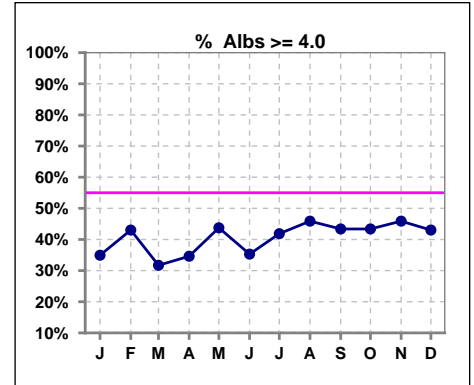
	Jan	Feb	Mar	Apr	May	Jun	Jul	Aug	Sep	Oct	Nov	Dec
# CO2	83	86	82	78	80	85	86	85	83	83	84	86
# CO2 > 27	3	4	2	4	5	6	2	4	2	1	2	8
Pop. Mean	23	24	23	24	24	24	24	24	23	24	24	24
Std. Deviation	2.00	2.08	1.96	2.00	2.21	2.37	2.06	2.34	1.93	1.84	2.22	2.50
% CO2 > 27	4%	5%	2%	5%	6%	7%	2%	5%	2%	1%	2%	9%



\*Albumin values use BCG method - as of July 2001

**II. NUTRITION**

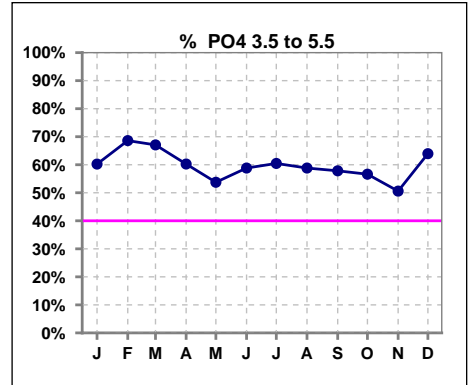
	Jan	Feb	Mar	Apr	May	Jun	Jul	Aug	Sep	Oct	Nov	Dec
# Albumin	83	86	82	78	80	85	86	85	83	83	85	86
# Albumin >= 4.0	29	37	26	27	35	30	36	39	36	36	39	37
Pop. Mean	3.8	3.9	3.8	3.8	3.9	3.8	3.8	3.8	3.9	3.9	3.9	3.9
Std. Deviation	0.40	0.37	0.37	0.41	0.41	0.46	0.44	0.44	0.39	0.41	0.39	0.41
% Alb >= 4.0	35%	43%	32%	35%	44%	35%	42%	46%	43%	43%	46%	43%



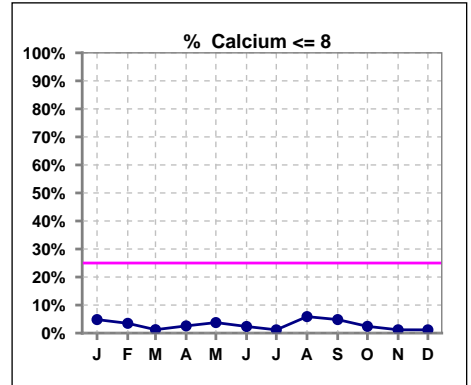
Lab methodology for PTH changed January 2012

**III. OSTEODYSTROPHY**

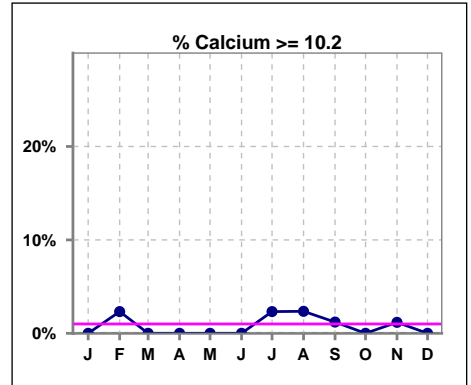
	Jan	Feb	Mar	Apr	May	Jun	Jul	Aug	Sep	Oct	Nov	Dec
# PO4	83	86	82	78	80	85	86	85	83	83	85	86
# PO4 3.5 to 5.5	50	59	55	47	43	50	52	50	48	47	43	55
Pop. Mean	5.6	5.5	5.6	5.6	5.7	5.5	5.5	5.5	5.6	5.6	5.5	5.5
Std. Deviation	1.45	1.44	1.66	1.72	1.65	1.52	1.68	1.53	1.76	1.56	1.77	1.42
% PO4 3.5 to 5.5	60%	69%	67%	60%	54%	59%	60%	59%	58%	57%	51%	64%



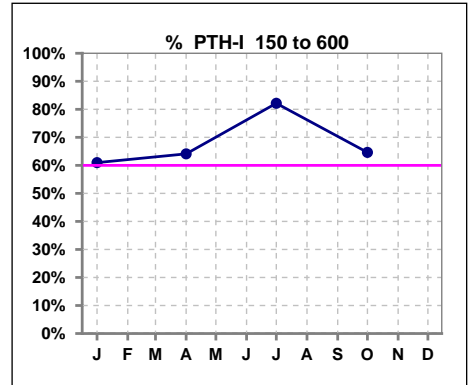
	Jan	Feb	Mar	Apr	May	Jun	Jul	Aug	Sep	Oct	Nov	Dec
# Calcium	83	86	82	78	80	85	86	85	83	83	85	86
# Calcium <= 8	4	3	1	2	3	2	1	5	4	2	1	1
Pop. Mean	9.1	9.2	9.1	9.0	9.2	9.1	9.1	9.2	9.2	9.2	9.4	9.1
Std. Deviation	0.65	0.62	0.56	0.59	0.56	0.62	0.54	0.62	0.61	0.46	0.53	0.50
% Calcium <= 8	5%	3%	1%	3%	4%	2%	1%	6%	5%	2%	1%	1%



	Jan	Feb	Mar	Apr	May	Jun	Jul	Aug	Sep	Oct	Nov	Dec
# Calcium	83	86	82	78	80	85	86	85	83	83	85	86
# Calcium >= 10.2	0	2	0	0	0	0	2	2	1	0	1	0
Pop. Mean	9.1	9.2	9.1	9.0	9.2	9.1	9.1	9.2	9.2	9.2	9.4	9.1
Std. Deviation	0.65	0.62	0.56	0.59	0.56	0.62	0.54	0.62	0.61	0.46	0.53	0.50
% Calcium >= 10.2	0%	2%	0%	0%	0%	0%	2%	2%	1%	0%	1%	0%



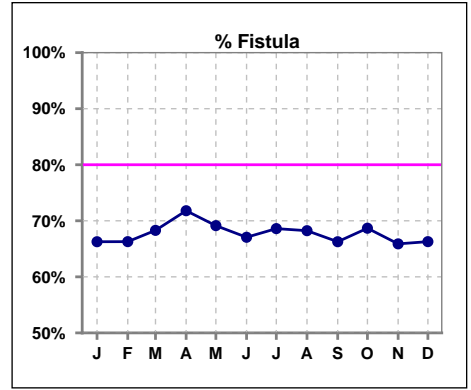
	Jan	Feb	Mar	Apr	May	Jun	Jul	Aug	Sep	Oct	Nov	Dec
# PTH-I	82			78			84			82		
# PTH-I 150 to 600	50			50			69			53		
Pop. Mean	441			356			321			317		
Std. Deviation	305			268			193			197		
% PTH-I 150 to 600	61%			64%			82%			65%		



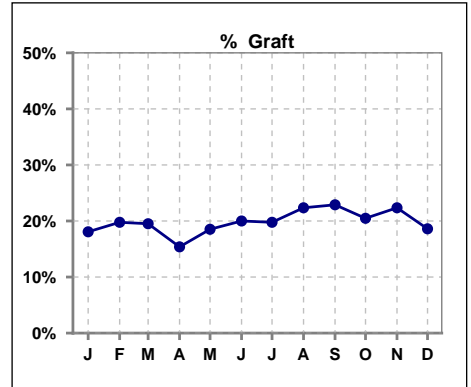
Methodology: a) All labs for 'Adequacy of Dialysis', 'Nutrition', 'Osteodystrophy', 'Anemia' and 'Diabetes' based on last value of month; b) BP's and #L processed are average of all values for month; c) Access data takes last access of month; d) Values for SGA and 'Infection Control' use most recent result.

**IV. ACCESS**

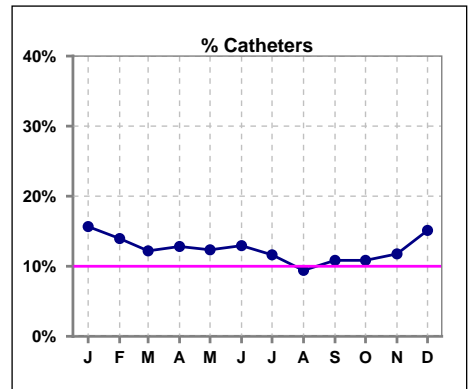
	Jan	Feb	Mar	Apr	May	Jun	Jul	Aug	Sep	Oct	Nov	Dec
# Access	82	86	82	77	81	85	86	85	83	83	85	86
# Fistula	55	57	56	56	56	57	59	58	55	57	56	57
% Fistula	66%	66%	68%	72%	69%	67%	69%	68%	66%	69%	66%	66%



	Jan	Feb	Mar	Apr	May	Jun	Jul	Aug	Sep	Oct	Nov	Dec
# Access	82	86	82	77	81	85	86	85	83	83	85	86
# Graft	15	17	16	12	15	17	17	19	19	17	19	16
% Graft	18%	20%	20%	15%	19%	20%	20%	22%	23%	20%	22%	19%



	Jan	Feb	Mar	Apr	May	Jun	Jul	Aug	Sep	Oct	Nov	Dec
# Access	82	86	82	77	81	85	86	85	83	83	85	86
# Catheters	13	12	10	10	10	11	10	8	9	9	10	13
% Catheters	16%	14%	12%	13%	12%	13%	12%	9%	11%	11%	12%	15%



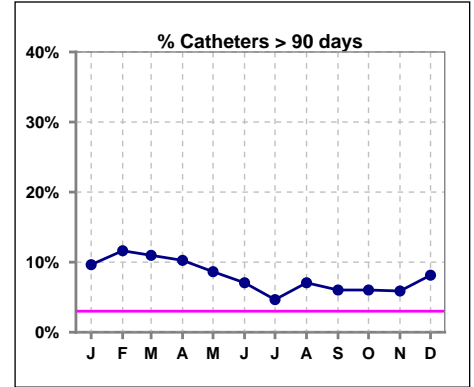
Methodology: a) All labs for 'Adequacy of Dialysis', 'Nutrition', 'Osteodystrophy', 'Anemia' and 'Diabetes' based on last value of month; b) BP's and #L processed are average of all values for month; c) Access data takes last access of month; d) Values for SGA and 'Infection Control' use most recent result.

**IV. ACCESS - CONT.**

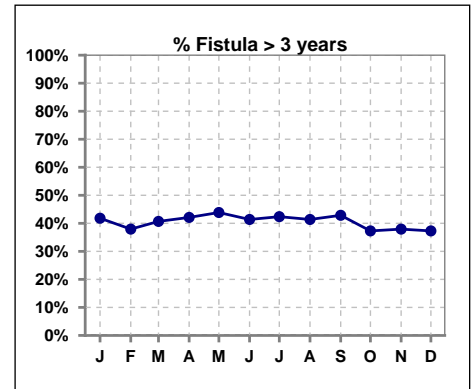
**Catheters > 90 days**

	Jan	Feb	Mar	Apr	May	Jun	Jul	Aug	Sep	Oct	Nov	Dec
# Access	83	86	82	78	81	85	86	85	83	83	85	86
# Catheters	8	10	9	8	7	6	4	6	5	5	5	7
<b>% Catheters</b>	<b>10%</b>	<b>12%</b>	<b>11%</b>	<b>10%</b>	<b>9%</b>	<b>7%</b>	<b>5%</b>	<b>7%</b>	<b>6%</b>	<b>6%</b>	<b>6%</b>	<b>8%</b>

Definition: Catheter in use on last treatment of the month



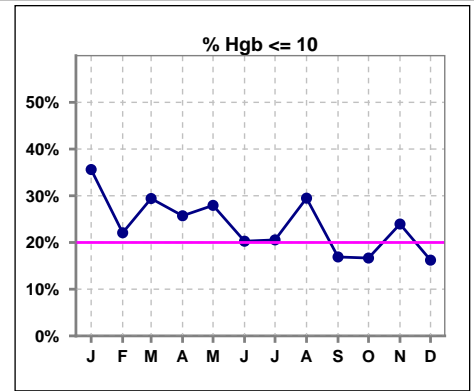
	Jan	Feb	Mar	Apr	May	Jun	Jul	Aug	Sep	Oct	Nov	Dec
# Fistula	55	58	59	57	57	58	59	58	56	59	58	59
# Fistula > 3 yrs	23	22	24	24	25	24	25	24	24	22	22	22
<b>% Fistula &gt; 3 yrs</b>	<b>42%</b>	<b>38%</b>	<b>41%</b>	<b>42%</b>	<b>44%</b>	<b>41%</b>	<b>42%</b>	<b>41%</b>	<b>43%</b>	<b>37%</b>	<b>38%</b>	<b>37%</b>



**V. ANEMIA**

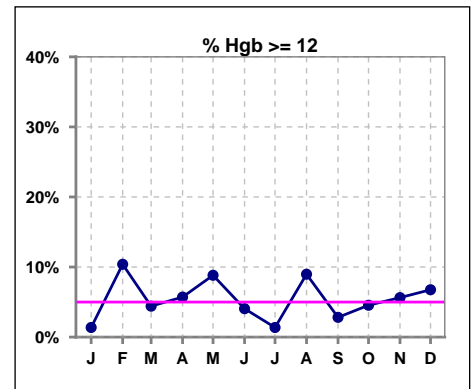
	Jan	Feb	Mar	Apr	May	Jun	Jul	Aug	Sep	Oct	Nov	Dec
# Hgb	73	77	68	70	68	74	73	78	71	66	71	74
# Hgb <= 10	26	17	20	18	19	15	15	23	12	11	17	12
Pop. Mean	10.2	10.6	10.5	10.6	10.7	10.7	10.6	10.6	10.6	10.8	10.5	10.7
Std. Deviation	1.1	1.3	1.2	1.0	1.0	0.9	0.8	1.3	1.0	1.0	1.3	1.1
% Hgb <= 10	36%	22%	29%	26%	28%	20%	21%	29%	17%	17%	24%	16%

Note: Excludes patients who received no ESA in month.



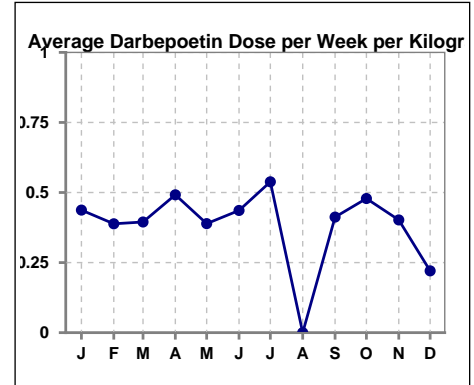
	Jan	Feb	Mar	Apr	May	Jun	Jul	Aug	Sep	Oct	Nov	Dec
# Hgb	73	77	68	70	68	74	73	78	71	66	71	74
# Hgb >= 12	1	8	3	4	6	3	1	7	2	3	4	5
Pop. Mean	10.2	10.6	10.5	10.6	10.7	10.7	10.6	10.6	10.6	10.8	10.5	10.7
Std. Deviation	1.1	1.3	1.2	1.0	1.0	0.9	0.8	1.3	1.0	1.0	1.3	1.1
% Hgb >= 12	1%	10%	4%	6%	9%	4%	1%	9%	3%	5%	6%	7%

Note: Excludes patients who received no ESA in month.



**Average Darbepoetin Dose per Week per Kilogram**

	Jan	Feb	Mar	Apr	May	Jun	Jul	Aug	Sep	Oct	Nov	Dec
# Average Darbepoetin	.4	.4	.4	.5	.4	.4	.5	0	.4	.5	.4	.2

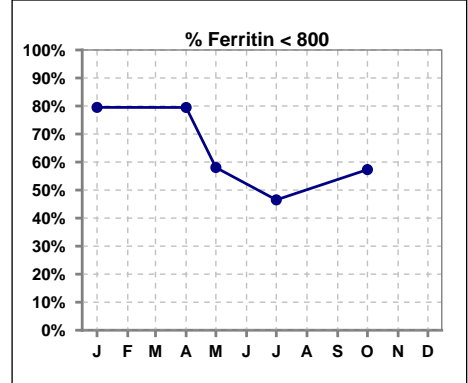




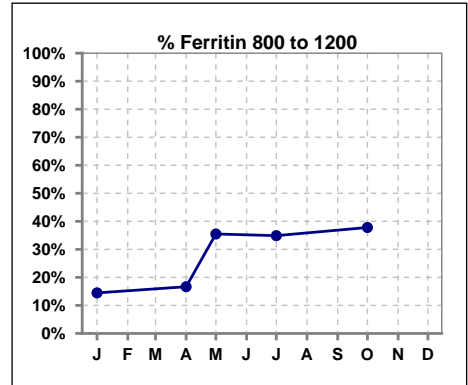
**V. ANEMIA - CONT.**

**Iron Profile**

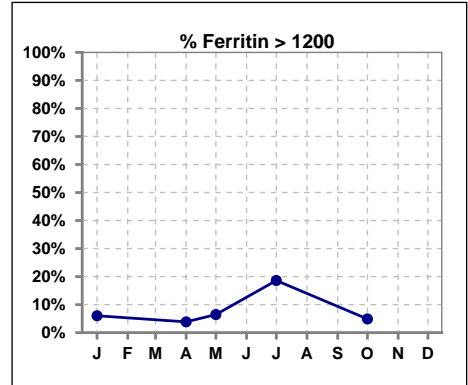
	Jan	Feb	Mar	Apr	May	Jun	Jul	Aug	Sep	Oct	Nov	Dec
# Ferritin	83			78	31		86			82		
# Ferritin < 800	66			62	18		40			47		
Pop. Mean	616			629	766		853			744		
Std. Deviation	337			286	309		422			334		
<b>% Ferritin &lt; 800</b>	<b>80%</b>			<b>79%</b>	<b>58%</b>		<b>47%</b>			<b>57%</b>		



	Jan	Feb	Mar	Apr	May	Jun	Jul	Aug	Sep	Oct	Nov	Dec
# Ferritin	83			78	31		86			82		
# Ferritin 800 to 1200	12			13	11		30			31		
Pop. Mean	616			629	766		853			744		
Std. Deviation	337			286	309		422			334		
<b>% Ferritin 800 to 1200</b>	<b>14%</b>			<b>17%</b>	<b>35%</b>		<b>35%</b>			<b>38%</b>		

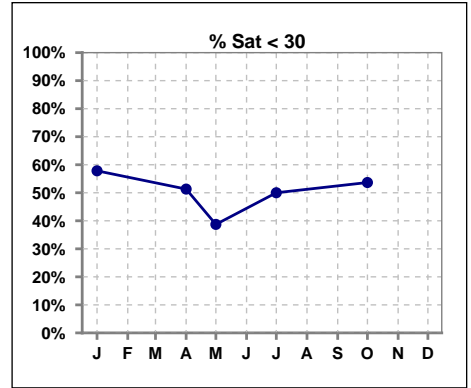


	Jan	Feb	Mar	Apr	May	Jun	Jul	Aug	Sep	Oct	Nov	Dec
# Ferritin	83			78	31		86			82		
# Ferritin > 1200	5			3	2		16			4		
Pop. Mean	616			629	766		853			744		
Std. Deviation	337			286	309		422			334		
<b>% Ferritin &gt; 1200</b>	<b>6%</b>			<b>4%</b>	<b>6%</b>		<b>19%</b>			<b>5%</b>		

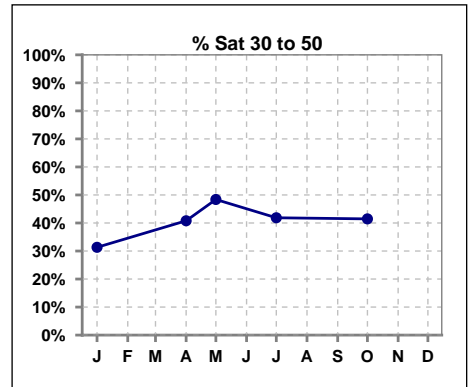


**V. ANEMIA - CONT.**

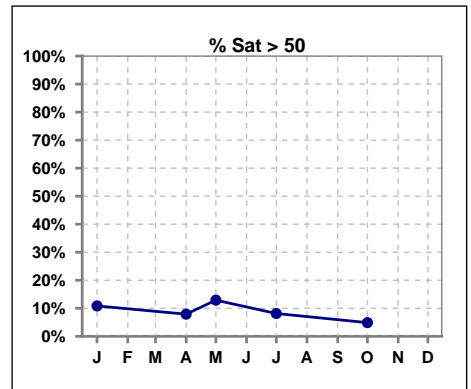
	Jan	Feb	Mar	Apr	May	Jun	Jul	Aug	Sep	Oct	Nov	Dec
# % Sat	83			76	31		86			82		
# % Sat < 30	48			39	12		43			44		
Pop. Mean	31			30	35		31			31		
Std. Deviation	17			13	20		15			15		
<b>% % Sat &lt; 30</b>	<b>58%</b>			<b>51%</b>	<b>39%</b>		<b>50%</b>			<b>54%</b>		



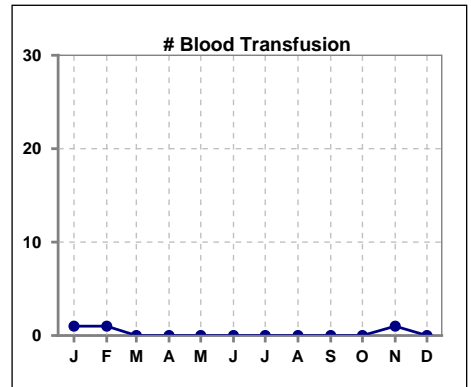
	Jan	Feb	Mar	Apr	May	Jun	Jul	Aug	Sep	Oct	Nov	Dec
# % Sat	83			76	31		86			82		
# % Sat 30 to 50	26			31	15		36			34		
Pop. Mean	31			30	35		31			31		
Std. Deviation	17			13	20		15			15		
<b>% % Sat 30 to 50</b>	<b>31%</b>			<b>41%</b>	<b>48%</b>		<b>42%</b>			<b>41%</b>		



	Jan	Feb	Mar	Apr	May	Jun	Jul	Aug	Sep	Oct	Nov	Dec
# % Sat	83			76	31		86			82		
# % Sat > 50	9			6	4		7			4		
Pop. Mean	31			30	35		31			31		
Std. Deviation	17			13	20		15			15		
<b>% % Sat &gt; 50</b>	<b>11%</b>			<b>8%</b>	<b>13%</b>		<b>8%</b>			<b>5%</b>		



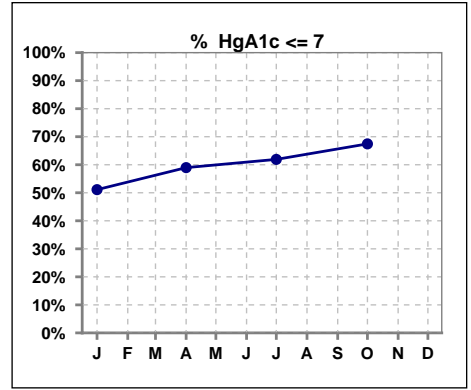
	Jan	Feb	Mar	Apr	May	Jun	Jul	Aug	Sep	Oct	Nov	Dec
# Patient	83	86	82	79	81	85	86	85	84	84	86	88
# Blood Transfusion	1	1	0	0	0	0	0	0	0	0	1	0



Methodology: a) All labs for 'Adequacy of Dialysis', 'Nutrition', 'Osteodystrophy', 'Anemia' and 'Diabetes' based on last value of month; b) BP's and #L processed are average of all values for month; c) Access data takes last access of month; d) Values for SGA and 'Infection Control' use most recent result.

**VI. Diabetes**

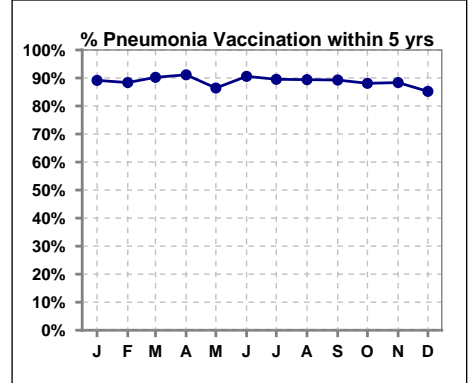
	Jan	Feb	Mar	Apr	May	Jun	Jul	Aug	Sep	Oct	Nov	Dec
# HgA1c	45			39			42			43		
# HgA1c <= 7	23			23			26			29		
Pop. Mean	7.3			6.7			6.7			6.6		
Std. Deviation	1.56			1.30			1.41			1.29		
<b>% HgA1c &lt;= 7</b>	<b>51%</b>			<b>59%</b>			<b>62%</b>			<b>67%</b>		



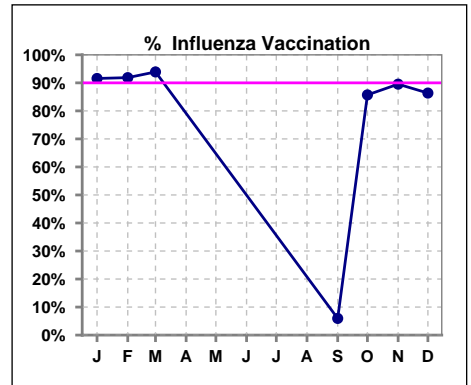
**VII. Infection Control**

**Pneumonia vaccination within the past five years**

	Jan	Feb	Mar	Apr	May	Jun	Jul	Aug	Sep	Oct	Nov	Dec
# Patient	83	86	82	79	81	85	86	85	84	84	86	88
# Pneumonia	74	76	74	72	70	77	77	76	75	74	76	75
% Pneumonia	89%	88%	90%	91%	86%	91%	90%	89%	89%	88%	88%	85%



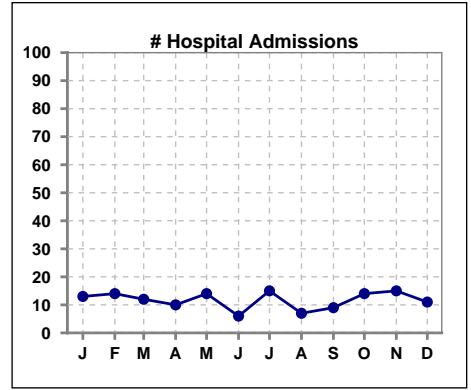
	Jan	Feb	Mar	Apr	May	Jun	Jul	Aug	Sep	Oct	Nov	Dec
# Patient	83	86	82						84	84	86	88
# Influenza	76	79	77						5	72	77	76
% Influenza	92%	92%	94%						6%	86%	90%	86%



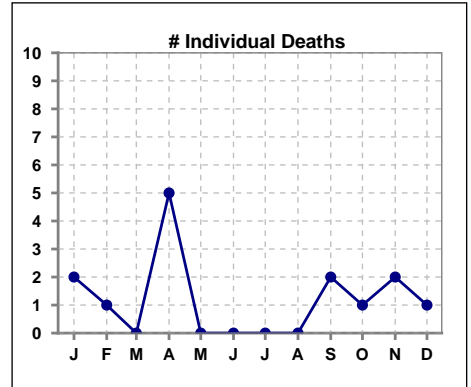
Methodology: a) All labs for 'Adequacy of Dialysis', 'Nutrition', 'Osteodystrophy', 'Anemia' and 'Diabetes' based on last value of month; b) BP's and #L processed are average of all values for month; c) Access data takes last access of month; d) Values for SGA and 'Infection Control' use most recent result.

**VIII. Outcome measures**

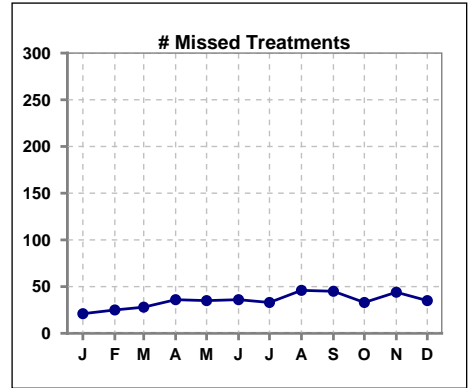
	Jan	Feb	Mar	Apr	May	Jun	Jul	Aug	Sep	Oct	Nov	Dec
# Patient	83	86	82	79	81	85	86	85	84	84	86	88
# Hospital Admissions	13	14	12	10	14	6	15	7	9	14	15	11



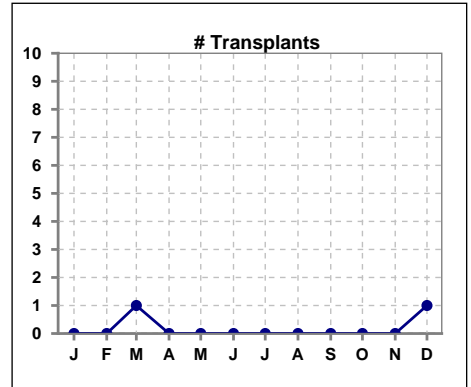
	Jan	Feb	Mar	Apr	May	Jun	Jul	Aug	Sep	Oct	Nov	Dec
# Patient	83	86	82	79	81	85	86	85	84	84	86	88
# Individual Deaths	2	1	0	5	0	0	0	0	2	1	2	1



	Jan	Feb	Mar	Apr	May	Jun	Jul	Aug	Sep	Oct	Nov	Dec
# Patient	83	86	82	79	81	85	86	85	84	84	86	88
# Missed Treatments	21	25	28	36	35	36	33	46	45	33	44	35



	Jan	Feb	Mar	Apr	May	Jun	Jul	Aug	Sep	Oct	Nov	Dec
# Patient	83	86	82	79	81	85	86	85	84	84	86	88
# Transplants	0	0	1	0	0	0	0	0	0	0	0	1



Methodology: a) All labs for 'Adequacy of Dialysis', 'Nutrition', 'Osteodystrophy', 'Anemia' and 'Diabetes' based on last value of month; b) BP's and #L processed are average of all values for month; c) Access data takes last access of month; d) Values for SGA and 'Infection Control' use most recent result.