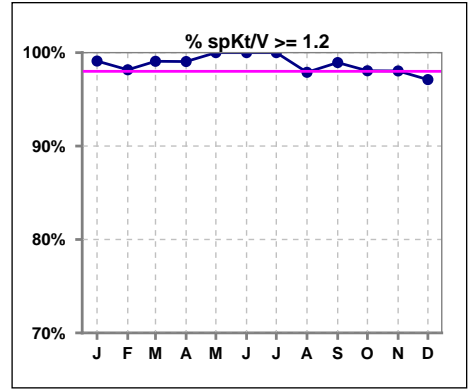
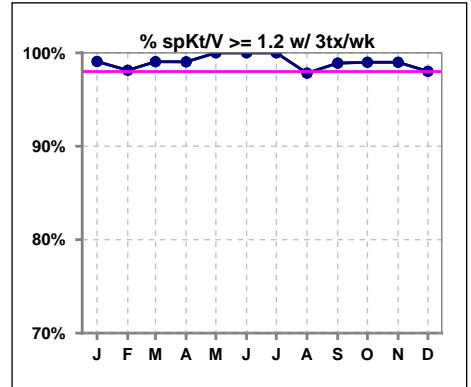


I. ADEQUACY OF DIALYSIS

	Jan	Feb	Mar	Apr	May	Jun	Jul	Aug	Sep	Oct	Nov	Dec
# spKt/V	111	109	108	105	103	102	96	95	94	103	102	104
# spKt/V >= 1.2	110	107	107	104	103	102	96	93	93	101	100	101
Pop. Mean	1.68	1.69	1.76	1.74	1.75	1.73	1.74	1.70	1.79	1.71	1.69	1.62
Std. Deviation	0.29	0.28	0.29	0.33	0.32	0.31	0.30	0.32	0.29	0.32	0.31	0.30
% spKt/V >= 1.2	99%	98%	99%	99%	100%	100%	100%	98%	99%	98%	98%	97%

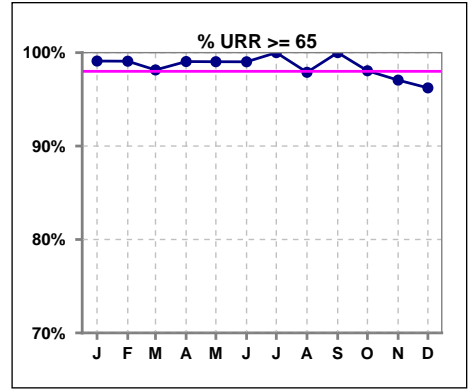


	Jan	Feb	Mar	Apr	May	Jun	Jul	Aug	Sep	Oct	Nov	Dec
# spKt/V w/ 3tx/wk	108	107	106	104	101	100	94	92	91	99	99	101
# spKt/V >= 1.2 w/3tx/wk	107	105	105	103	101	100	94	90	90	98	98	99
Pop. Mean	1.67	1.68	1.75	1.73	1.74	1.72	1.72	1.70	1.79	1.70	1.69	1.62
Std. Deviation	0.28	0.28	0.29	0.33	0.32	0.30	0.28	0.31	0.28	0.29	0.30	0.29
% >= 1.2 w/3tx/wk	99%	98%	99%	99%	100%	100%	100%	98%	99%	99%	99%	98%

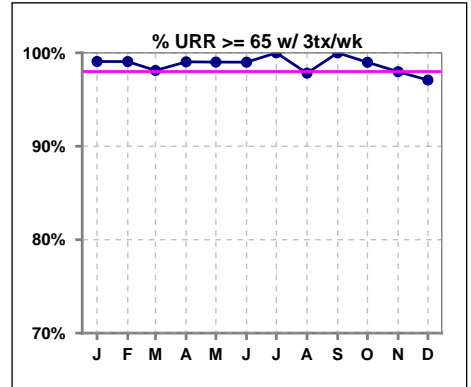


I. ADEQUACY OF DIALYSIS - CONT.

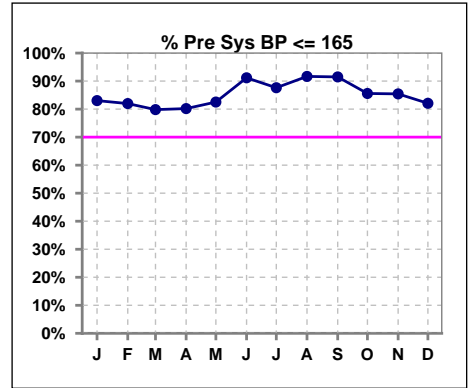
	Jan	Feb	Mar	Apr	May	Jun	Jul	Aug	Sep	Oct	Nov	Dec
# URR	111	109	108	105	103	102	97	95	94	103	102	106
# URR >= 65	110	108	106	104	102	101	97	93	94	101	99	102
Pop. Mean	76	77	78	77	77	77	77	76	78	77	76	75
Std. Deviation	5.11	5.25	5.31	5.48	5.41	5.46	5.35	6.25	5.08	5.77	5.97	5.96
% URR >= 65	99%	99%	98%	99%	99%	99%	100%	98%	100%	98%	97%	96%



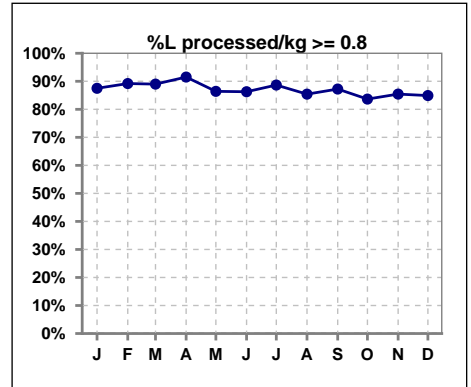
	Jan	Feb	Mar	Apr	May	Jun	Jul	Aug	Sep	Oct	Nov	Dec
# URR w/ 3tx/wk	108	107	106	104	101	100	95	92	91	99	99	103
# URR>=65 w/ 3tx/wk	107	106	104	103	100	99	95	90	91	98	97	100
Pop. Mean	76	76	78	77	77	77	77	76	78	77	76	75
Std. Deviation	5.00	5.16	5.25	5.48	5.37	5.35	5.19	6.11	4.91	5.49	5.73	5.71
% URR>=65 w/ 3tx/wk	99%	99%	98%	99%	99%	99%	100%	98%	100%	99%	98%	97%



	Jan	Feb	Mar	Apr	May	Jun	Jul	Aug	Sep	Oct	Nov	Dec
# Pre Sys BP	112	111	109	106	103	102	97	96	94	104	103	106
# Pre Sys BP <= 165	95	91	87	85	85	93	85	88	86	89	88	87
Pop. Mean	147	146	145	148	148	142	137	138	140	142	143	142
Std. Deviation	19.0	20.5	20.6	19.5	18.7	18.7	20.0	19.6	20.2	22.2	22.5	23.5
% Pre Sys BP <=165	83%	82%	80%	80%	83%	91%	88%	92%	91%	86%	85%	82%



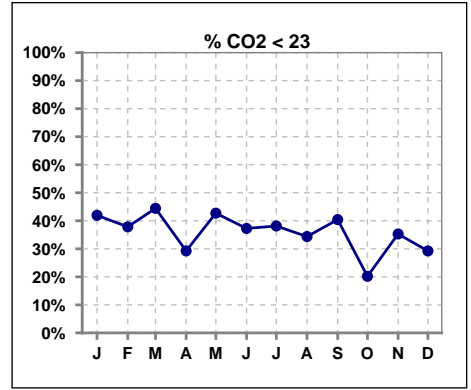
	Jan	Feb	Mar	Apr	May	Jun	Jul	Aug	Sep	Oct	Nov	Dec
# L processed/kg	112	111	109	106	103	102	97	96	94	104	103	106
# L processed/kg>=0.8	98	99	97	97	89	88	86	82	82	87	88	90
Pop. Mean	1	1	1	1	1	1	1	1	1	1	1	1
Std. Deviation	0.2	0.3	0.3	0.3	0.3	0.3	0.3	0.3	0.3	0.3	0.3	0.3
% L processed/kg>=0.8	88%	89%	89%	92%	86%	86%	89%	85%	87%	84%	85%	85%



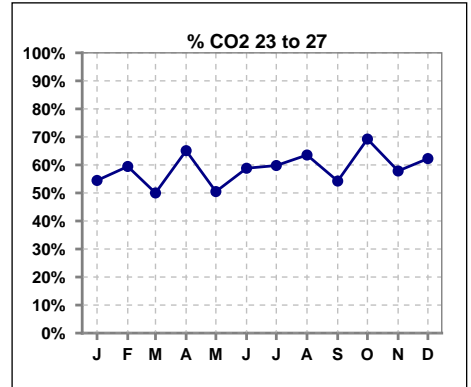
Methodology: a) All labs for 'Adequacy of Dialysis', 'Nutrition', 'Osteodystrophy', 'Anemia' and 'Diabetes' based on last value of month; b) BP's and #L processed are average of all values for month; c) Access data takes last access of month; d) Values for SGA and 'Infection Control' use most recent result.

I. ADEQUACY OF DIALYSIS - CONT.

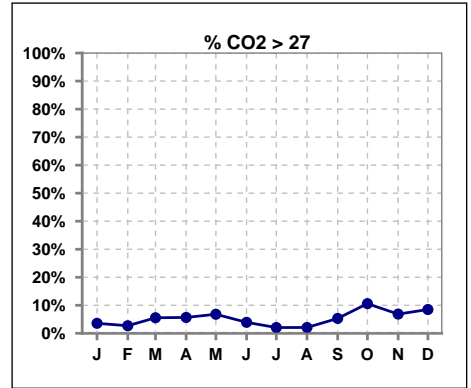
	Jan	Feb	Mar	Apr	May	Jun	Jul	Aug	Sep	Oct	Nov	Dec
# CO2	112	111	108	106	103	102	97	96	94	104	102	106
# CO2 < 23	47	42	48	31	44	38	37	33	38	21	36	31
Pop. Mean	23	23	23	24	23	23	23	23	23	24	23	24
Std. Deviation	2.55	2.49	2.85	2.72	2.47	2.33	2.59	2.30	2.52	2.48	2.43	2.79
% CO2 < 23	42%	38%	44%	29%	43%	37%	38%	34%	40%	20%	35%	29%



	Jan	Feb	Mar	Apr	May	Jun	Jul	Aug	Sep	Oct	Nov	Dec
# CO2	112	111	108	106	103	102	97	96	94	104	102	106
# CO2 23 to 27	61	66	54	69	52	60	58	61	51	72	59	66
Pop. Mean	23	23	23	24	23	23	23	23	23	24	23	24
Std. Deviation	2.55	2.49	2.85	2.72	2.47	2.33	2.59	2.30	2.52	2.48	2.43	2.79
% CO2 23 to 27	54%	59%	50%	65%	50%	59%	60%	64%	54%	69%	58%	62%



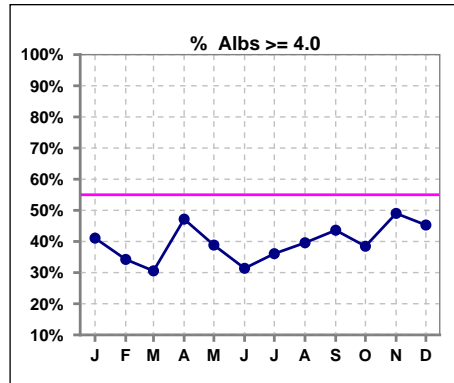
	Jan	Feb	Mar	Apr	May	Jun	Jul	Aug	Sep	Oct	Nov	Dec
# CO2	112	111	108	106	103	102	97	96	94	104	102	106
# CO2 > 27	4	3	6	6	7	4	2	2	5	11	7	9
Pop. Mean	23	23	23	24	23	23	23	23	23	24	23	24
Std. Deviation	2.55	2.49	2.85	2.72	2.47	2.33	2.59	2.30	2.52	2.48	2.43	2.79
% CO2 > 27	4%	3%	6%	6%	7%	4%	2%	2%	5%	11%	7%	8%



*Albumin values use BCG method - as of July 2001

II. NUTRITION

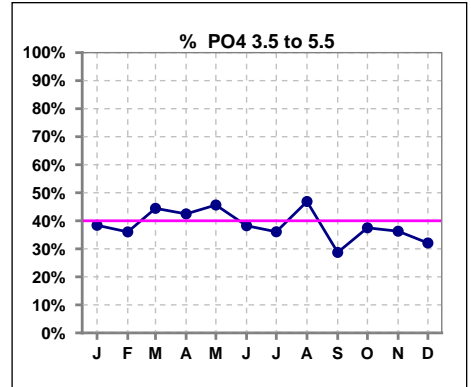
	Jan	Feb	Mar	Apr	May	Jun	Jul	Aug	Sep	Oct	Nov	Dec
# Albumin	112	111	108	106	103	102	97	96	94	104	102	106
# Albumin >= 4.0	46	38	33	50	40	32	35	38	41	40	50	48
Pop. Mean	3.9	3.8	3.8	3.8	3.8	3.8	3.8	3.8	3.9	3.8	3.9	3.9
Std. Deviation	0.35	0.38	0.39	0.41	0.42	0.39	0.34	0.38	0.41	0.37	0.38	0.39
% Alb >= 4.0	41%	34%	31%	47%	39%	31%	36%	40%	44%	38%	49%	45%



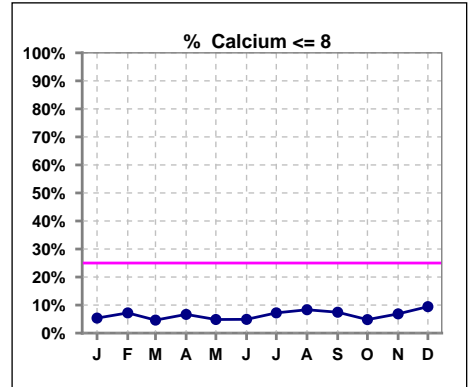
Lab methodology for PTH changed January 2012

III. OSTEODYSTROPHY

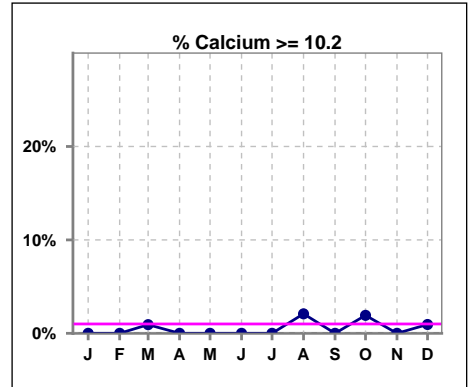
	Jan	Feb	Mar	Apr	May	Jun	Jul	Aug	Sep	Oct	Nov	Dec
# PO4	112	111	108	106	103	102	97	96	94	104	102	106
# PO4 3.5 to 5.5	43	40	48	45	47	39	35	45	27	39	37	34
Pop. Mean	5.9	5.9	5.9	5.8	6.0	5.9	5.9	6.0	6.2	6.2	6.2	5.9
Std. Deviation	1.76	2.03	2.16	1.86	1.78	1.75	1.85	2.03	2.03	1.84	2.05	2.00
% PO4 3.5 to 5.5	38%	36%	44%	42%	46%	38%	36%	47%	29%	38%	36%	32%



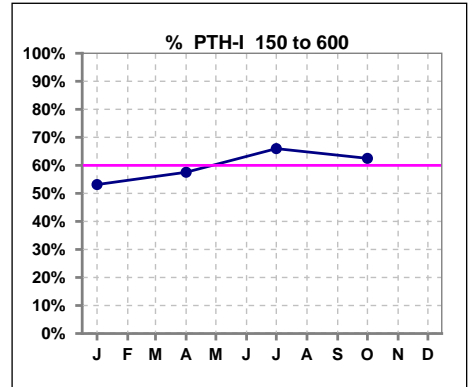
	Jan	Feb	Mar	Apr	May	Jun	Jul	Aug	Sep	Oct	Nov	Dec
# Calcium	112	111	108	105	103	102	97	96	94	104	102	106
# Calcium <= 8	6	8	5	7	5	5	7	8	7	5	7	10
Pop. Mean	9.2	9.1	9.2	9.1	9.3	9.3	9.2	9.2	9.2	9.3	9.2	9.2
Std. Deviation	0.75	0.72	0.81	0.74	0.69	0.73	0.77	0.78	0.65	0.64	0.76	0.74
% Calcium <= 8	5%	7%	5%	7%	5%	5%	7%	8%	7%	5%	7%	9%



	Jan	Feb	Mar	Apr	May	Jun	Jul	Aug	Sep	Oct	Nov	Dec
# Calcium	112	111	108	105	103	102	97	96	94	104	102	106
# Calcium >= 10.2	0	0	1	0	0	0	0	2	0	2	0	1
Pop. Mean	9.2	9.1	9.2	9.1	9.3	9.3	9.2	9.2	9.2	9.3	9.2	9.2
Std. Deviation	0.75	0.72	0.81	0.74	0.69	0.73	0.77	0.78	0.65	0.64	0.76	0.74
% Calcium >= 10.2	0%	0%	1%	0%	0%	0%	0%	2%	0%	2%	0%	1%



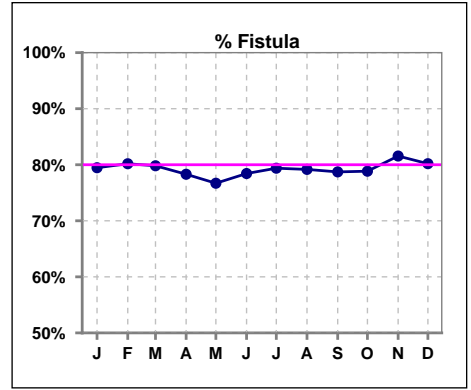
	Jan	Feb	Mar	Apr	May	Jun	Jul	Aug	Sep	Oct	Nov	Dec
# PTH-I	111			106			97			104		
# PTH-I 150 to 600	59			61			64			65		
Pop. Mean	615			565			560			513		
Std. Deviation	555			591			669			603		
% PTH-I 150 to 600	53%			58%			66%			63%		



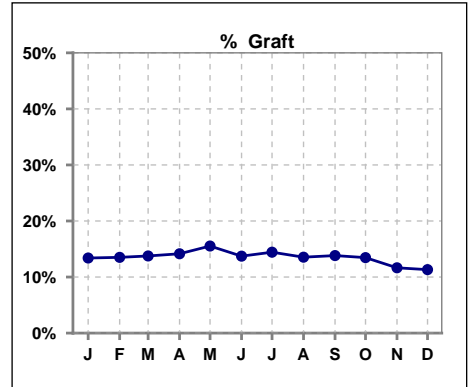
Methodology: a) All labs for 'Adequacy of Dialysis', 'Nutrition', 'Osteodystrophy', 'Anemia' and 'Diabetes' based on last value of month; b) BP's and #L processed are average of all values for month; c) Access data takes last access of month; d) Values for SGA and 'Infection Control' use most recent result.

IV. ACCESS

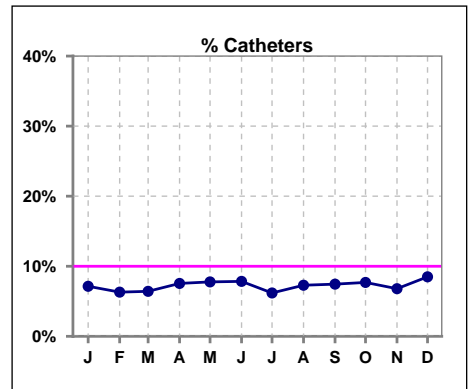
	Jan	Feb	Mar	Apr	May	Jun	Jul	Aug	Sep	Oct	Nov	Dec
# Access	112	111	109	106	103	102	97	96	94	104	103	106
# Fistula	89	89	87	83	79	80	77	76	74	82	84	85
% Fistula	79%	80%	80%	78%	77%	78%	79%	79%	79%	79%	82%	80%



	Jan	Feb	Mar	Apr	May	Jun	Jul	Aug	Sep	Oct	Nov	Dec
# Access	112	111	109	106	103	102	97	96	94	104	103	106
# Graft	15	15	15	15	16	14	14	13	13	14	12	12
% Graft	13%	14%	14%	14%	16%	14%	14%	14%	14%	13%	12%	11%



	Jan	Feb	Mar	Apr	May	Jun	Jul	Aug	Sep	Oct	Nov	Dec
# Access	112	111	109	106	103	102	97	96	94	104	103	106
# Catheters	8	7	7	8	8	8	6	7	7	8	7	9
% Catheters	7%	6%	6%	8%	8%	8%	6%	7%	7%	8%	7%	8%



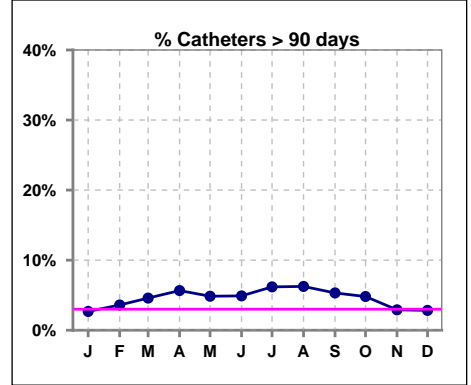
Methodology: a) All labs for 'Adequacy of Dialysis', 'Nutrition', 'Osteodystrophy', 'Anemia' and 'Diabetes' based on last value of month; b) BP's and #L processed are average of all values for month; c) Access data takes last access of month; d) Values for SGA and 'Infection Control' use most recent result.

IV. ACCESS - CONT.

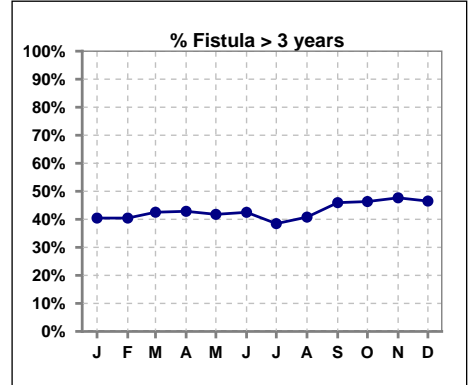
Catheters > 90 days

	Jan	Feb	Mar	Apr	May	Jun	Jul	Aug	Sep	Oct	Nov	Dec
# Access	112	111	109	106	103	102	97	96	94	104	103	106
# Catheters	3	4	5	6	5	5	6	6	5	5	3	3
% Catheters	3%	4%	5%	6%	5%	5%	6%	6%	5%	5%	3%	3%

Definition: Catheter in use on last treatment of the month



	Jan	Feb	Mar	Apr	May	Jun	Jul	Aug	Sep	Oct	Nov	Dec
# Fistula	89	89	87	84	79	80	78	76	74	82	86	86
# Fistula > 3 yrs	36	36	37	36	33	34	30	31	34	38	41	40
% Fistula > 3 yrs	40%	40%	43%	43%	42%	43%	38%	41%	46%	46%	48%	47%

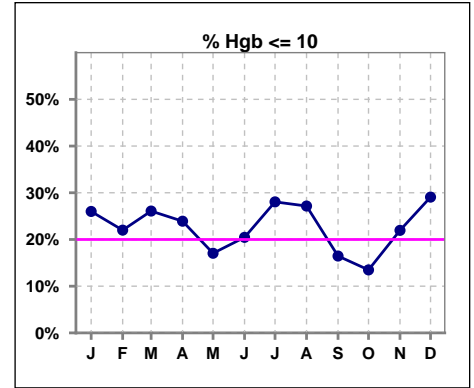


Methodology: a) All labs for 'Adequacy of Dialysis', 'Nutrition', 'Osteodystrophy', 'Anemia' and 'Diabetes' based on last value of month; b) BP's and #L processed are average of all values for month; c) Access data takes last access of month; d) Values for SGA and 'Infection Control' use most recent result.

V. ANEMIA

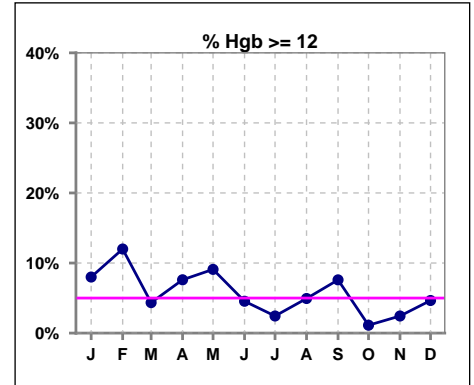
	Jan	Feb	Mar	Apr	May	Jun	Jul	Aug	Sep	Oct	Nov	Dec
# Hgb	100	100	92	92	88	88	82	81	79	89	82	86
# Hgb <= 10	26	22	24	22	15	18	23	22	13	12	18	25
Pop. Mean	10.6	10.8	10.6	10.6	10.8	10.6	10.5	10.5	10.6	10.8	10.6	10.6
Std. Deviation	1.1	1.0	0.9	1.2	1.1	0.9	1.0	0.9	1.2	0.8	1.0	1.2
% Hgb <= 10	26%	22%	26%	24%	17%	20%	28%	27%	16%	13%	22%	29%

Note: Excludes patients who received no ESA in month.



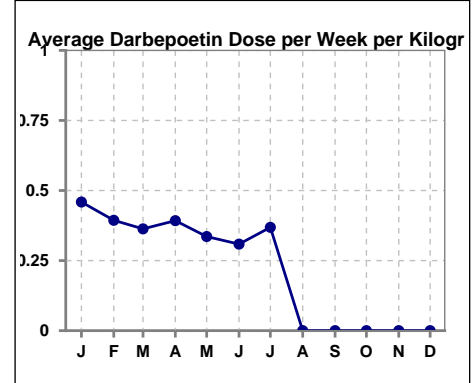
	Jan	Feb	Mar	Apr	May	Jun	Jul	Aug	Sep	Oct	Nov	Dec
# Hgb	100	100	92	92	88	88	82	81	79	89	82	86
# Hgb >= 12	8	12	4	7	8	4	2	4	6	1	2	4
Pop. Mean	10.6	10.8	10.6	10.6	10.8	10.6	10.5	10.5	10.6	10.8	10.6	10.6
Std. Deviation	1.1	1.0	0.9	1.2	1.1	0.9	1.0	0.9	1.2	0.8	1.0	1.2
% Hgb >= 12	8%	12%	4%	8%	9%	5%	2%	5%	8%	1%	2%	5%

Note: Excludes patients who received no ESA in month.



Average Darbepoetin Dose per Week per Kilogram

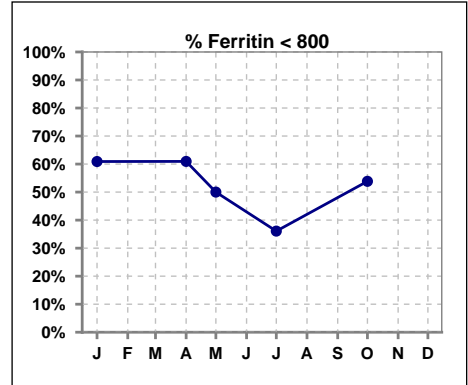
	Jan	Feb	Mar	Apr	May	Jun	Jul	Aug	Sep	Oct	Nov	Dec
# Average Darbepoetin	.5	.4	.4	.4	.3	.3	.4	0	0	0	0	0



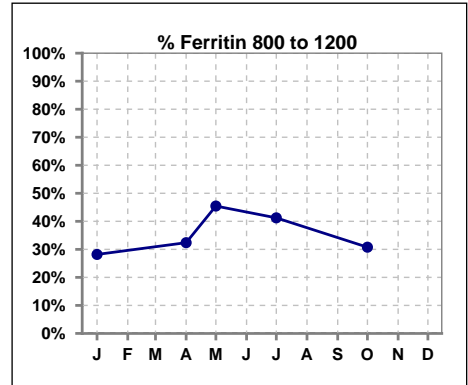
V. ANEMIA - CONT.

Iron Profile

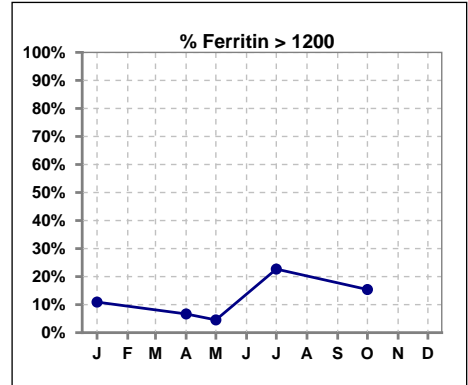
	Jan	Feb	Mar	Apr	May	Jun	Jul	Aug	Sep	Oct	Nov	Dec
# Ferritin	110			105	22		97			104		
# Ferritin < 800	67			64	11		35			56		
Pop. Mean	762			752	820		934			851		
Std. Deviation	314			343	358		398			403		
% Ferritin < 800	61%			61%	50%		36%			54%		



	Jan	Feb	Mar	Apr	May	Jun	Jul	Aug	Sep	Oct	Nov	Dec
# Ferritin	110			105	22		97			104		
# Ferritin 800 to 1200	31			34	10		40			32		
Pop. Mean	762			752	820		934			851		
Std. Deviation	314			343	358		398			403		
% Ferritin 800 to 1200	28%			32%	45%		41%			31%		



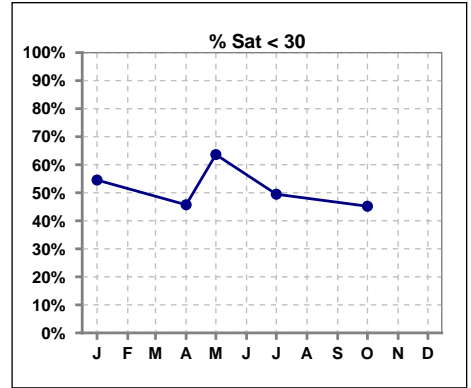
	Jan	Feb	Mar	Apr	May	Jun	Jul	Aug	Sep	Oct	Nov	Dec
# Ferritin	110			105	22		97			104		
# Ferritin > 1200	12			7	1		22			16		
Pop. Mean	762			752	820		934			851		
Std. Deviation	314			343	358		398			403		
% Ferritin > 1200	11%			7%	5%		23%			15%		



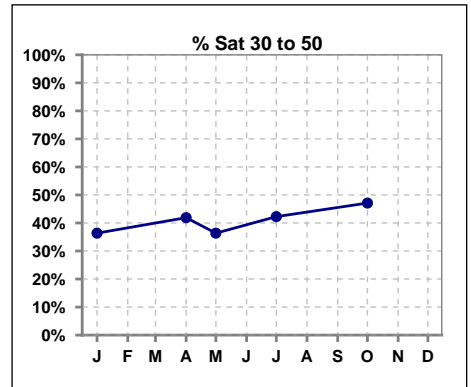
Methodology: a) All labs for 'Adequacy of Dialysis', 'Nutrition', 'Osteodystrophy', 'Anemia' and 'Diabetes' based on last value of month; b) BP's and #L processed are average of all values for month; c) Access data takes last access of month; d) Values for SGA and 'Infection Control' use most recent result.

V. ANEMIA - CONT.

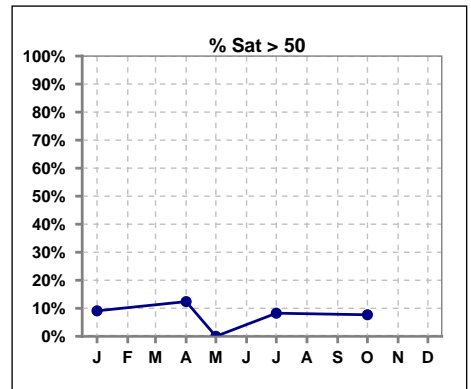
	Jan	Feb	Mar	Apr	May	Jun	Jul	Aug	Sep	Oct	Nov	Dec
# % Sat	110			105	22		97			104		
# % Sat < 30	60			48	14		48			47		
Pop. Mean	31			33	28		31			34		
Std. Deviation	14			14	8		12			15		
% % Sat < 30	55%			46%	64%		49%			45%		



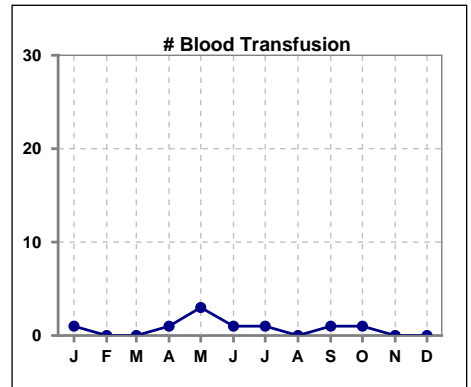
	Jan	Feb	Mar	Apr	May	Jun	Jul	Aug	Sep	Oct	Nov	Dec
# % Sat	110			105	22		97			104		
# % Sat 30 to 50	40			44	8		41			49		
Pop. Mean	31			33	28		31			34		
Std. Deviation	14			14	8		12			15		
% % Sat 30 to 50	36%			42%	36%		42%			47%		



	Jan	Feb	Mar	Apr	May	Jun	Jul	Aug	Sep	Oct	Nov	Dec
# % Sat	110			105	22		97			104		
# % Sat > 50	10			13	0		8			8		
Pop. Mean	31			33	28		31			34		
Std. Deviation	14			14	8		12			15		
% % Sat > 50	9%			12%	0%		8%			8%		



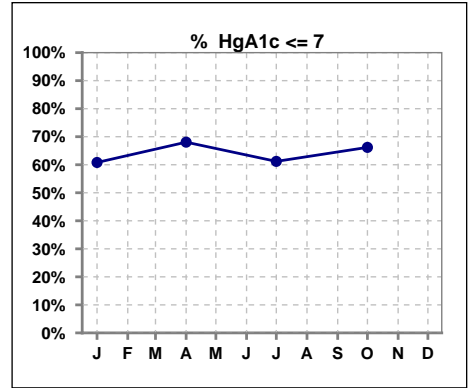
	Jan	Feb	Mar	Apr	May	Jun	Jul	Aug	Sep	Oct	Nov	Dec
# Patient	112	111	109	106	103	102	97	96	95	104	103	106
# Blood Transfusion	1	0	0	1	3	1	1	0	1	1	0	0



Methodology: a) All labs for 'Adequacy of Dialysis', 'Nutrition', 'Osteodystrophy', 'Anemia' and 'Diabetes' based on last value of month; b) BP's and #L processed are average of all values for month; c) Access data takes last access of month; d) Values for SGA and 'Infection Control' use most recent result.

VI. Diabetes

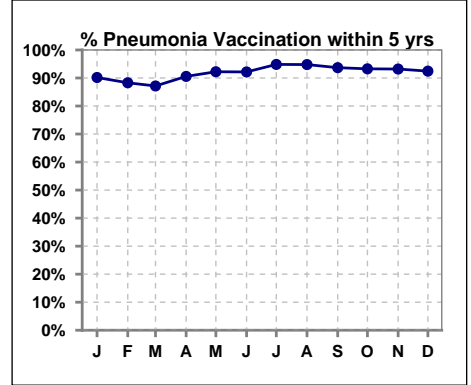
	Jan	Feb	Mar	Apr	May	Jun	Jul	Aug	Sep	Oct	Nov	Dec
# HgA1c	74			72			67			71		
# HgA1c <= 7	45			49			41			47		
Pop. Mean	6.8			6.7			6.9			6.7		
Std. Deviation	1.34			1.43			1.65			1.66		
% HgA1c <= 7	61%			68%			61%			66%		



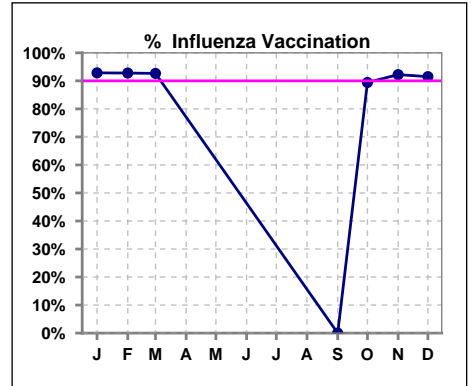
VII. Infection Control

Pneumonia vaccination within the past five years

	Jan	Feb	Mar	Apr	May	Jun	Jul	Aug	Sep	Oct	Nov	Dec
# Patient	112	111	109	106	103	102	97	96	95	104	103	106
# Pneumonia	101	98	95	96	95	94	92	91	89	97	96	98
% Pneumonia	90%	88%	87%	91%	92%	92%	95%	95%	94%	93%	93%	92%



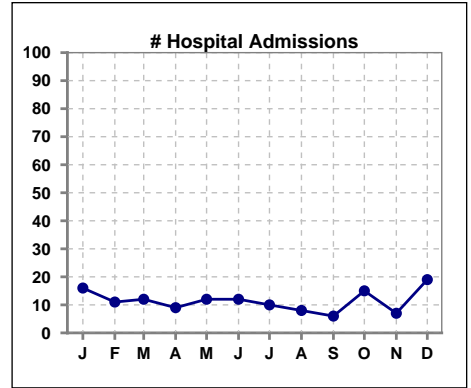
	Jan	Feb	Mar	Apr	May	Jun	Jul	Aug	Sep	Oct	Nov	Dec
# Patient	112	111	109						95	104	103	106
# Influenza	104	103	101						0	93	95	97
% Influenza	93%	93%	93%						0%	89%	92%	92%



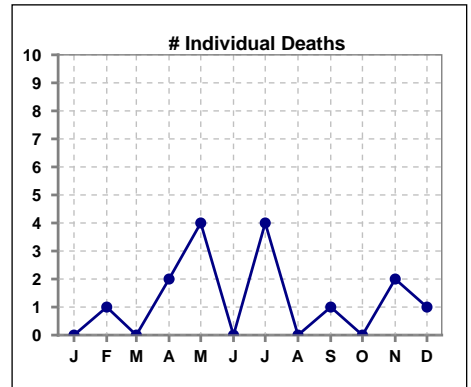
Methodology: a) All labs for 'Adequacy of Dialysis', 'Nutrition', 'Osteodystrophy', 'Anemia' and 'Diabetes' based on last value of month; b) BP's and #L processed are average of all values for month; c) Access data takes last access of month; d) Values for SGA and 'Infection Control' use most recent result.

VIII. Outcome measures

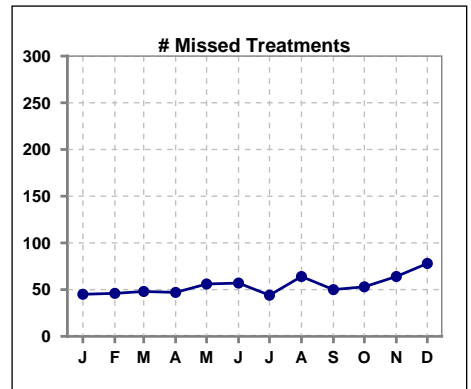
	Jan	Feb	Mar	Apr	May	Jun	Jul	Aug	Sep	Oct	Nov	Dec
# Patient	112	111	109	106	103	102	97	96	95	104	103	106
# Hospital Admissions	16	11	12	9	12	12	10	8	6	15	7	19



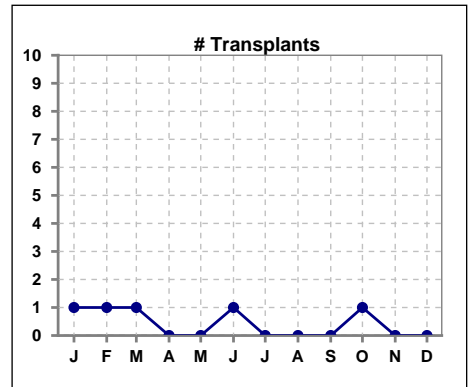
	Jan	Feb	Mar	Apr	May	Jun	Jul	Aug	Sep	Oct	Nov	Dec
# Patient	112	111	109	106	103	102	97	96	95	104	103	106
# Individual Deaths	0	1	0	2	4	0	4	0	1	0	2	1



	Jan	Feb	Mar	Apr	May	Jun	Jul	Aug	Sep	Oct	Nov	Dec
# Patient	112	111	109	106	103	102	97	96	95	104	103	106
# Missed Treatments	45	46	48	47	56	57	44	64	50	53	64	78



	Jan	Feb	Mar	Apr	May	Jun	Jul	Aug	Sep	Oct	Nov	Dec
# Patient	112	111	109	106	103	102	97	96	95	104	103	106
# Transplants	1	1	1	0	0	1	0	0	0	1	0	0



Methodology: a) All labs for 'Adequacy of Dialysis', 'Nutrition', 'Osteodystrophy', 'Anemia' and 'Diabetes' based on last value of month; b) BP's and #L processed are average of all values for month; c) Access data takes last access of month; d) Values for SGA and 'Infection Control' use most recent result.