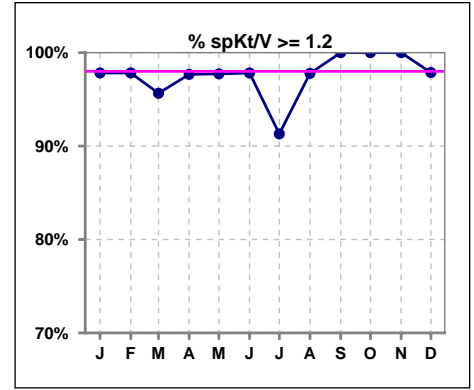
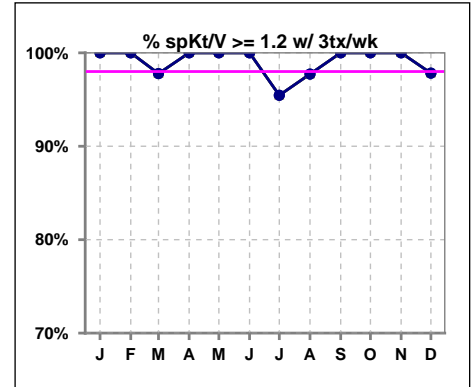


I. ADEQUACY OF DIALYSIS

	Jan	Feb	Mar	Apr	May	Jun	Jul	Aug	Sep	Oct	Nov	Dec
# spKt/V	46	46	46	43	44	46	46	45	45	46	48	47
# spKt/V >= 1.2	45	45	44	42	43	45	42	44	45	46	48	46
Pop. Mean	1.58	1.60	1.61	1.61	1.62	1.61	1.56	1.52	1.65	1.59	1.63	1.59
Std. Deviation	0.23	0.28	0.23	0.21	0.22	0.26	0.31	0.19	0.26	0.26	0.29	0.30
% spKt/V >= 1.2	98%	98%	96%	98%	98%	98%	91%	98%	100%	100%	100%	98%

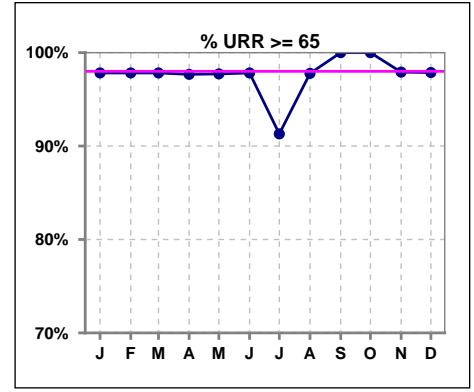


	Jan	Feb	Mar	Apr	May	Jun	Jul	Aug	Sep	Oct	Nov	Dec
# spKt/V w/ 3tx/wk	44	45	45	42	43	45	44	44	45	46	47	46
# spKt/V >= 1.2 w/3tx/wk	44	45	44	42	43	45	42	43	45	46	47	45
Pop. Mean	1.60	1.61	1.62	1.62	1.63	1.62	1.59	1.52	1.65	1.59	1.63	1.58
Std. Deviation	0.20	0.26	0.22	0.19	0.20	0.25	0.28	0.19	0.26	0.26	0.29	0.29
% >= 1.2 w/3tx/wk	100%	100%	98%	100%	100%	100%	95%	98%	100%	100%	100%	98%

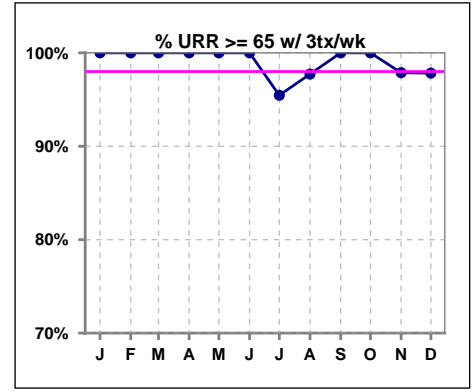


I. ADEQUACY OF DIALYSIS - CONT.

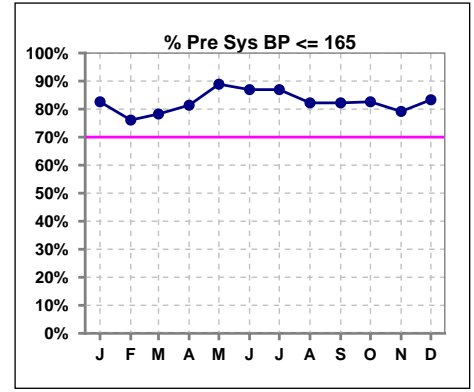
	Jan	Feb	Mar	Apr	May	Jun	Jul	Aug	Sep	Oct	Nov	Dec
# URR	46	46	46	43	44	46	46	45	45	46	48	47
# URR >= 65	45	45	45	42	43	45	42	44	45	46	47	46
Pop. Mean	74	75	75	75	76	75	73	73	76	75	75	75
Std. Deviation	4.91	4.96	4.68	4.44	4.42	4.77	8.01	4.06	4.58	4.80	5.39	5.61
% URR >= 65	98%	98%	98%	98%	98%	98%	91%	98%	100%	100%	98%	98%



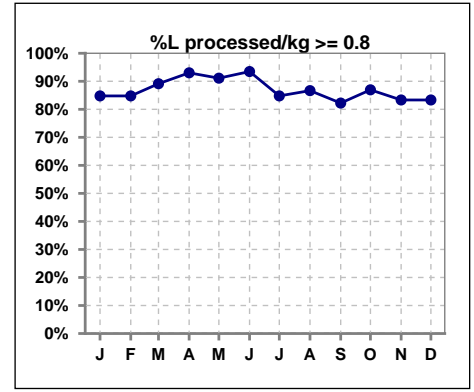
	Jan	Feb	Mar	Apr	May	Jun	Jul	Aug	Sep	Oct	Nov	Dec
# URR w/ 3tx/wk	44	45	45	42	43	45	44	44	45	46	47	46
# URR>=65 w/ 3tx/wk	44	45	45	42	43	45	42	43	45	46	46	45
Pop. Mean	75	75	76	76	76	75	74	73	76	75	75	75
Std. Deviation	4.17	4.39	4.17	3.84	3.88	4.54	7.25	4.04	4.58	4.80	5.42	5.48
% URR>=65 w/ 3tx/wk	100%	100%	100%	100%	100%	100%	95%	98%	100%	100%	98%	98%



	Jan	Feb	Mar	Apr	May	Jun	Jul	Aug	Sep	Oct	Nov	Dec
# Pre Sys BP	46	46	46	43	45	46	46	45	45	46	48	48
# Pre Sys BP <= 165	38	35	36	35	40	40	40	37	37	38	38	41
Pop. Mean	148	147	149	147	145	141	142	143	145	145	144	144
Std. Deviation	18.9	18.2	19.5	18.1	17.8	17.6	19.2	20.7	21.9	22.7	21.3	22.0
% Pre Sys BP <=165	83%	76%	78%	81%	89%	87%	87%	82%	82%	83%	79%	83%



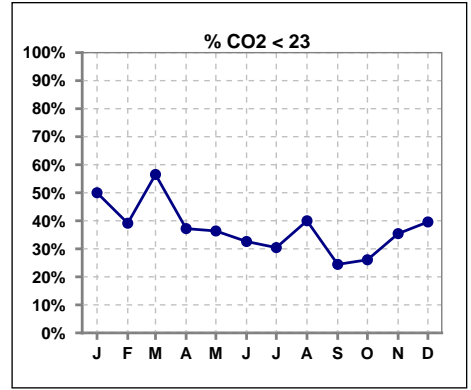
	Jan	Feb	Mar	Apr	May	Jun	Jul	Aug	Sep	Oct	Nov	Dec
# L processed/kg	46	46	46	43	45	46	46	45	45	46	48	48
# L processed/kg>=0.8	39	39	41	40	41	43	39	39	37	40	40	40
Pop. Mean	1	1	1	1	1	1	1	1	1	1	1	1
Std. Deviation	0.3	0.2	0.2	0.2	0.2	0.2	0.2	0.2	0.2	0.2	0.3	0.3
% L processed/kg>=0.8	85%	85%	89%	93%	91%	93%	85%	87%	82%	87%	83%	83%



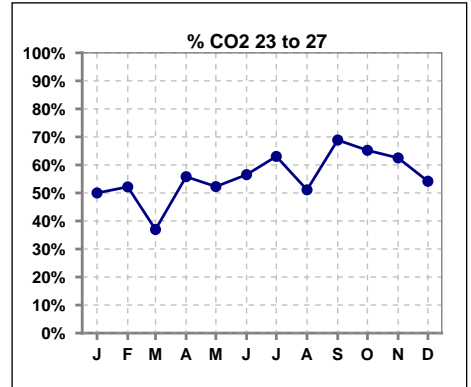
Methodology: a) All labs for 'Adequacy of Dialysis', 'Nutrition', 'Osteodystrophy', 'Anemia' and 'Diabetes' based on last value of month; b) BP's and #L processed are average of all values for month; c) Access data takes last access of month; d) Values for SGA and 'Infection Control' use most recent result.

I. ADEQUACY OF DIALYSIS - CONT.

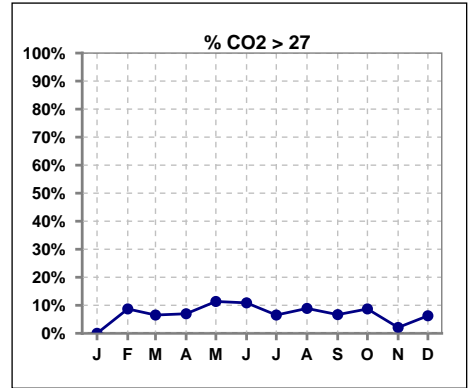
	Jan	Feb	Mar	Apr	May	Jun	Jul	Aug	Sep	Oct	Nov	Dec
# CO2	46	46	46	43	44	46	46	45	45	46	48	48
# CO2 < 23	23	18	26	16	16	15	14	18	11	12	17	19
Pop. Mean	22	23	22	23	24	24	23	24	24	24	23	23
Std. Deviation	2.23	2.58	2.38	2.88	2.90	3.12	2.57	2.49	2.65	2.77	2.69	3.26
% CO2 < 23	50%	39%	57%	37%	36%	33%	30%	40%	24%	26%	35%	40%



	Jan	Feb	Mar	Apr	May	Jun	Jul	Aug	Sep	Oct	Nov	Dec
# CO2	46	46	46	43	44	46	46	45	45	46	48	48
# CO2 23 to 27	23	24	17	24	23	26	29	23	31	30	30	26
Pop. Mean	22	23	22	23	24	24	23	24	24	24	23	23
Std. Deviation	2.23	2.58	2.38	2.88	2.90	3.12	2.57	2.49	2.65	2.77	2.69	3.26
% CO2 23 to 27	50%	52%	37%	56%	52%	57%	63%	51%	69%	65%	63%	54%



	Jan	Feb	Mar	Apr	May	Jun	Jul	Aug	Sep	Oct	Nov	Dec
# CO2	46	46	46	43	44	46	46	45	45	46	48	48
# CO2 > 27	0	4	3	3	5	5	3	4	3	4	1	3
Pop. Mean	22	23	22	23	24	24	23	24	24	24	23	23
Std. Deviation	2.23	2.58	2.38	2.88	2.90	3.12	2.57	2.49	2.65	2.77	2.69	3.26
% CO2 > 27	0%	9%	7%	7%	11%	11%	7%	9%	7%	9%	2%	6%

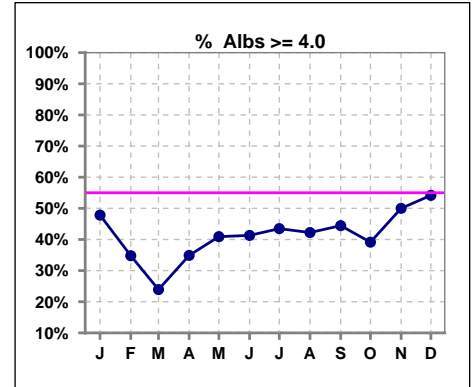


Methodology: a) All labs for 'Adequacy of Dialysis', 'Nutrition', 'Osteodystrophy', 'Anemia' and 'Diabetes' based on last value of month; b) BP's and #L processed are average of all values for month; c) Access data takes last access of month; d) Values for SGA and 'Infection Control' use most recent result.

*Albumin values use BCG method - as of July 2001

II. NUTRITION

	Jan	Feb	Mar	Apr	May	Jun	Jul	Aug	Sep	Oct	Nov	Dec
# Albumin	46	46	46	43	44	46	46	45	45	46	48	48
# Albumin >= 4.0	22	16	11	15	18	19	20	19	20	18	24	26
Pop. Mean	3.8	3.8	3.8	3.9	3.8	3.8	3.8	3.9	3.9	3.9	3.9	4.0
Std. Deviation	0.37	0.36	0.31	0.32	0.33	0.34	0.42	0.39	0.36	0.33	0.32	0.33
% Alb >= 4.0	48%	35%	24%	35%	41%	41%	43%	42%	44%	39%	50%	54%

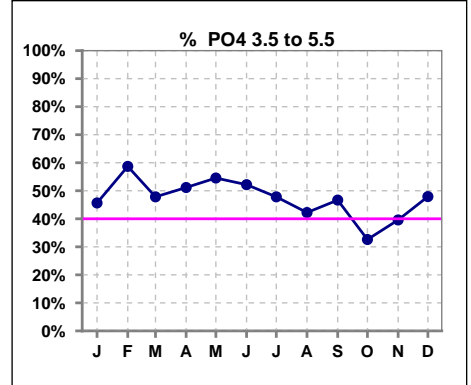


Methodology: a) All labs for 'Adequacy of Dialysis', 'Nutrition', 'Osteodystrophy', 'Anemia' and 'Diabetes' based on last value of month; b) BP's and #L processed are average of all values for month; c) Access data takes last access of month; d) Values for SGA and 'Infection Control' use most recent result.

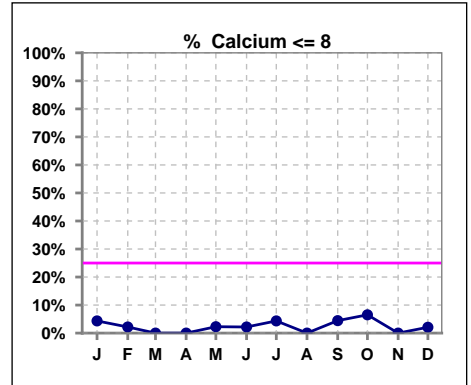
Lab methodology for PTH changed January 2012

III. OSTEODYSTROPHY

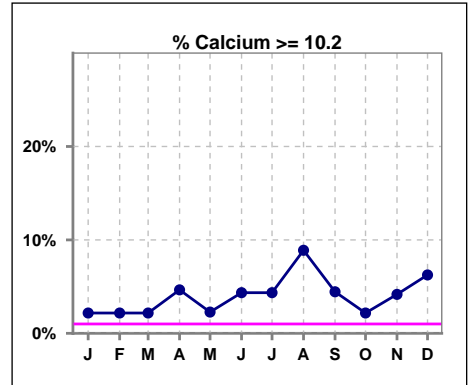
	Jan	Feb	Mar	Apr	May	Jun	Jul	Aug	Sep	Oct	Nov	Dec
# PO4	46	46	46	43	44	46	46	45	45	46	48	48
# PO4 3.5 to 5.5	21	27	22	22	24	24	22	19	21	15	19	23
Pop. Mean	5.8	5.6	5.8	6.1	5.7	5.8	5.9	5.9	5.9	6.1	6.1	6.1
Std. Deviation	2.03	1.72	1.59	1.75	1.63	1.71	1.55	1.52	2.02	1.59	1.45	1.74
% PO4 3.5 to 5.5	46%	59%	48%	51%	55%	52%	48%	42%	47%	33%	40%	48%



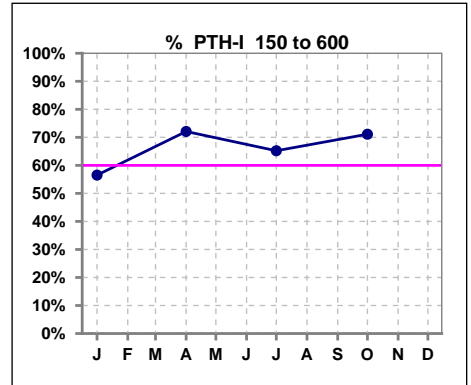
	Jan	Feb	Mar	Apr	May	Jun	Jul	Aug	Sep	Oct	Nov	Dec
# Calcium	46	46	46	43	44	46	46	45	45	46	48	48
# Calcium <= 8	2	1	0	0	1	1	2	0	2	3	0	1
Pop. Mean	9.2	9.2	9.3	9.2	9.3	9.4	9.3	9.5	9.2	9.3	9.5	9.4
Std. Deviation	0.80	0.56	0.45	0.53	0.47	0.58	0.64	0.61	0.68	0.59	0.54	0.72
% Calcium <= 8	4%	2%	0%	0%	2%	2%	4%	0%	4%	7%	0%	2%



	Jan	Feb	Mar	Apr	May	Jun	Jul	Aug	Sep	Oct	Nov	Dec
# Calcium	46	46	46	43	44	46	46	45	45	46	48	48
# Calcium >= 10.2	1	1	1	2	1	2	2	4	2	1	2	3
Pop. Mean	9.2	9.2	9.3	9.2	9.3	9.4	9.3	9.5	9.2	9.3	9.5	9.4
Std. Deviation	0.80	0.56	0.45	0.53	0.47	0.58	0.64	0.61	0.68	0.59	0.54	0.72
% Calcium >= 10.2	2%	2%	2%	5%	2%	4%	4%	9%	4%	2%	4%	6%



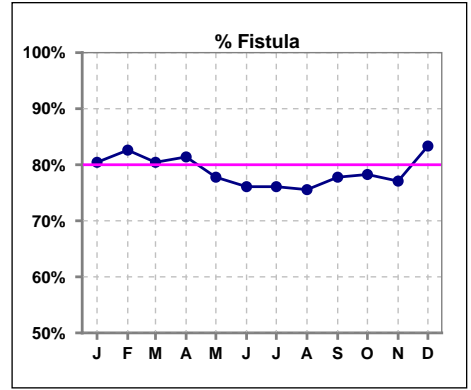
	Jan	Feb	Mar	Apr	May	Jun	Jul	Aug	Sep	Oct	Nov	Dec
# PTH-I	46			43			46			45		
# PTH-I 150 to 600	26			31			30			32		
Pop. Mean	627			556			395			401		
Std. Deviation	603			566			241			254		
% PTH-I 150 to 600	57%			72%			65%			71%		



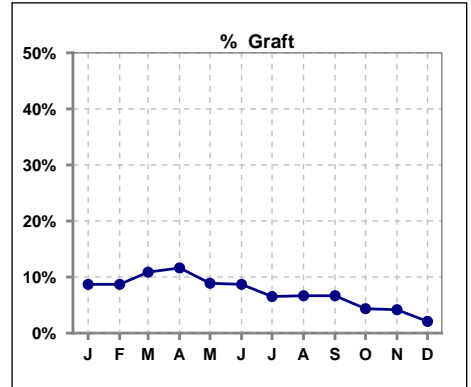
Methodology: a) All labs for 'Adequacy of Dialysis', 'Nutrition', 'Osteodystrophy', 'Anemia' and 'Diabetes' based on last value of month; b) BP's and #L processed are average of all values for month; c) Access data takes last access of month; d) Values for SGA and 'Infection Control' use most recent result.

IV. ACCESS

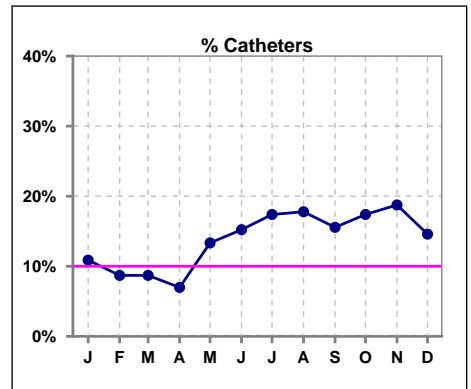
	Jan	Feb	Mar	Apr	May	Jun	Jul	Aug	Sep	Oct	Nov	Dec
# Access	46	46	46	43	45	46	46	45	45	46	48	48
# Fistula	37	38	37	35	35	35	35	34	35	36	37	40
% Fistula	80%	83%	80%	81%	78%	76%	76%	76%	78%	78%	77%	83%



	Jan	Feb	Mar	Apr	May	Jun	Jul	Aug	Sep	Oct	Nov	Dec
# Access	46	46	46	43	45	46	46	45	45	46	48	48
# Graft	4	4	5	5	4	4	3	3	3	2	2	1
% Graft	9%	9%	11%	12%	9%	9%	7%	7%	7%	4%	4%	2%



	Jan	Feb	Mar	Apr	May	Jun	Jul	Aug	Sep	Oct	Nov	Dec
# Access	46	46	46	43	45	46	46	45	45	46	48	48
# Catheters	5	4	4	3	6	7	8	8	7	8	9	7
% Catheters	11%	9%	9%	7%	13%	15%	17%	18%	16%	17%	19%	15%



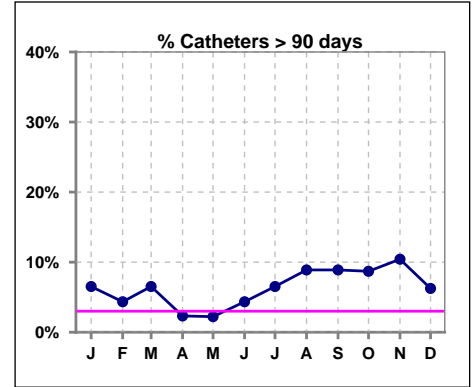
Methodology: a) All labs for 'Adequacy of Dialysis', 'Nutrition', 'Osteodystrophy', 'Anemia' and 'Diabetes' based on last value of month; b) BP's and #L processed are average of all values for month; c) Access data takes last access of month; d) Values for SGA and 'Infection Control' use most recent result.

IV. ACCESS - CONT.

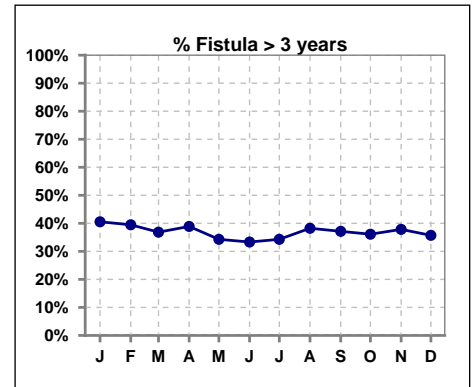
Catheters > 90 days

	Jan	Feb	Mar	Apr	May	Jun	Jul	Aug	Sep	Oct	Nov	Dec
# Access	46	46	46	43	45	46	46	45	45	46	48	48
# Catheters	3	2	3	1	1	2	3	4	4	4	5	3
% Catheters	7%	4%	7%	2%	2%	4%	7%	9%	9%	9%	10%	6%

Definition: Catheter in use on last treatment of the month



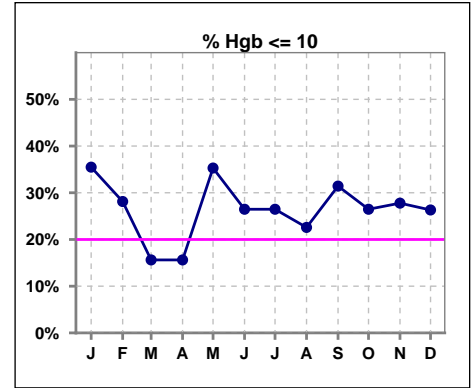
	Jan	Feb	Mar	Apr	May	Jun	Jul	Aug	Sep	Oct	Nov	Dec
# Fistula	37	38	38	36	35	36	35	34	35	36	37	42
# Fistula > 3 yrs	15	15	14	14	12	12	12	13	13	13	14	15
% Fistula > 3 yrs	41%	39%	37%	39%	34%	33%	34%	38%	37%	36%	38%	36%



V. ANEMIA

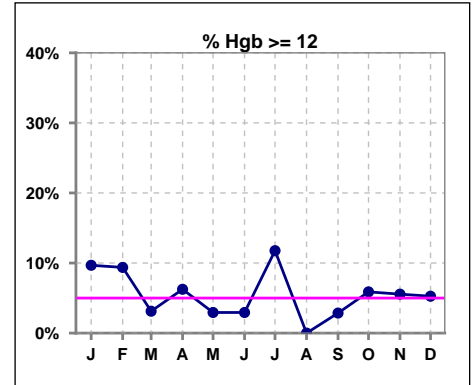
	Jan	Feb	Mar	Apr	May	Jun	Jul	Aug	Sep	Oct	Nov	Dec
# Hgb	31	32	32	32	34	34	34	31	35	34	36	38
# Hgb <= 10	11	9	5	5	12	9	9	7	11	9	10	10
Pop. Mean	10.4	10.6	10.5	10.6	10.3	10.5	10.7	10.5	10.5	10.6	10.6	10.5
Std. Deviation	1.4	1.2	0.9	1.0	1.2	0.9	1.2	0.8	1.1	1.2	1.2	1.2
% Hgb <= 10	35%	28%	16%	16%	35%	26%	26%	23%	31%	26%	28%	26%

Note: Excludes patients who received no ESA in month.



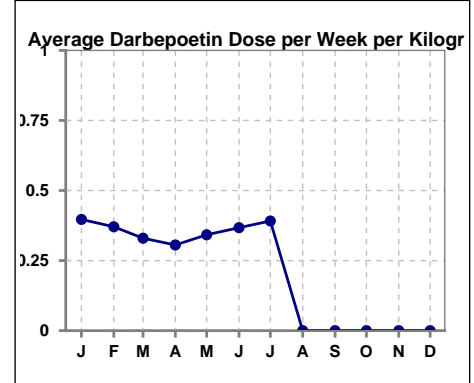
	Jan	Feb	Mar	Apr	May	Jun	Jul	Aug	Sep	Oct	Nov	Dec
# Hgb	31	32	32	32	34	34	34	31	35	34	36	38
# Hgb >= 12	3	3	1	2	1	1	4	0	1	2	2	2
Pop. Mean	10.4	10.6	10.5	10.6	10.3	10.5	10.7	10.5	10.5	10.6	10.6	10.5
Std. Deviation	1.4	1.2	0.9	1.0	1.2	0.9	1.2	0.8	1.1	1.2	1.2	1.2
% Hgb >= 12	10%	9%	3%	6%	3%	3%	12%	0%	3%	6%	6%	5%

Note: Excludes patients who received no ESA in month.



Average Darbepoetin Dose per Week per Kilogram

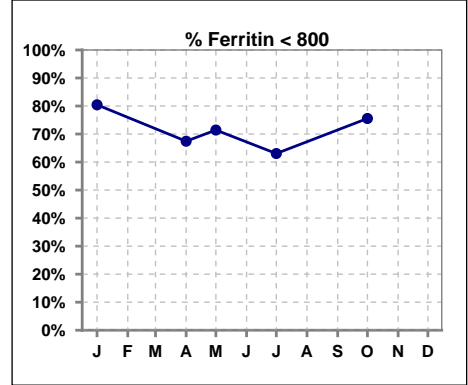
	Jan	Feb	Mar	Apr	May	Jun	Jul	Aug	Sep	Oct	Nov	Dec
# Average Darbepoetin	.4	.4	.3	.3	.3	.4	.4	0	0	0	0	0



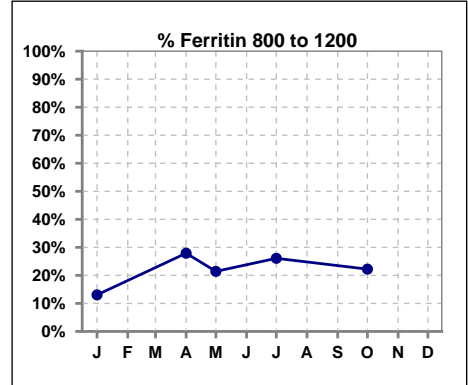
V. ANEMIA - CONT.

Iron Profile

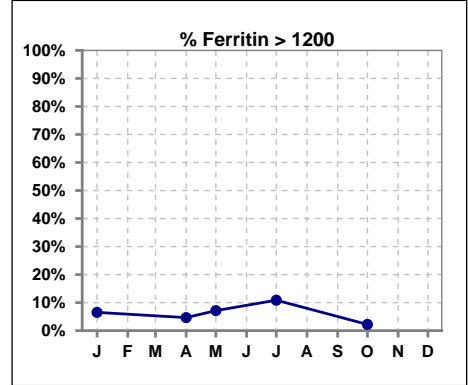
	Jan	Feb	Mar	Apr	May	Jun	Jul	Aug	Sep	Oct	Nov	Dec
# Ferritin	46			43	14		46			45		
# Ferritin < 800	37			29	10		29			34		
Pop. Mean	599			649	690		754			617		
Std. Deviation	277			286	339		350			276		
% Ferritin < 800	80%			67%	71%		63%			76%		



	Jan	Feb	Mar	Apr	May	Jun	Jul	Aug	Sep	Oct	Nov	Dec
# Ferritin	46			43	14		46			45		
# Ferritin 800 to 1200	6			12	3		12			10		
Pop. Mean	599			649	690		754			617		
Std. Deviation	277			286	339		350			276		
% Ferritin 800 to 1200	13%			28%	21%		26%			22%		



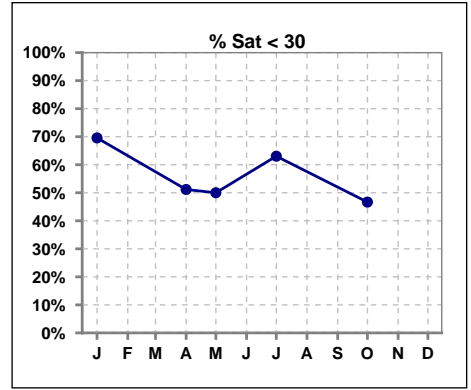
	Jan	Feb	Mar	Apr	May	Jun	Jul	Aug	Sep	Oct	Nov	Dec
# Ferritin	46			43	14		46			45		
# Ferritin > 1200	3			2	1		5			1		
Pop. Mean	599			649	690		754			617		
Std. Deviation	277			286	339		350			276		
% Ferritin > 1200	7%			5%	7%		11%			2%		



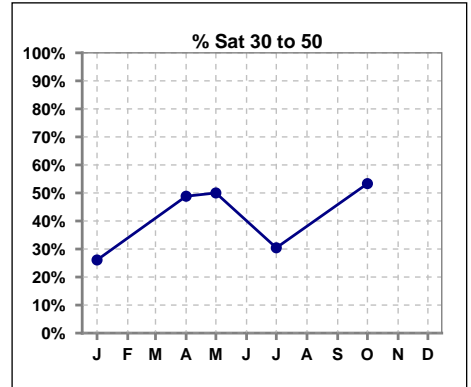
Methodology: a) All labs for 'Adequacy of Dialysis', 'Nutrition', 'Osteodystrophy', 'Anemia' and 'Diabetes' based on last value of month; b) BP's and #L processed are average of all values for month; c) Access data takes last access of month; d) Values for SGA and 'Infection Control' use most recent result.

V. ANEMIA - CONT.

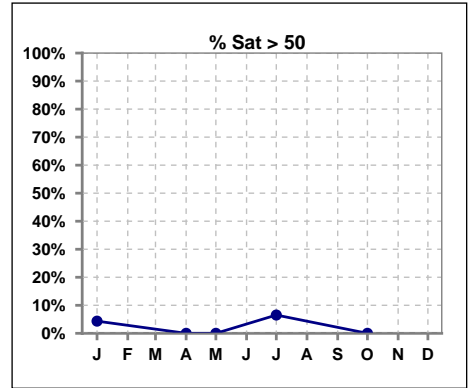
	Jan	Feb	Mar	Apr	May	Jun	Jul	Aug	Sep	Oct	Nov	Dec
# % Sat	46			43	14		46			45		
# % Sat < 30	32			22	7		29			21		
Pop. Mean	26			29	27		30			30		
Std. Deviation	11			10	12		12			10		
% % Sat < 30	70%			51%	50%		63%			47%		



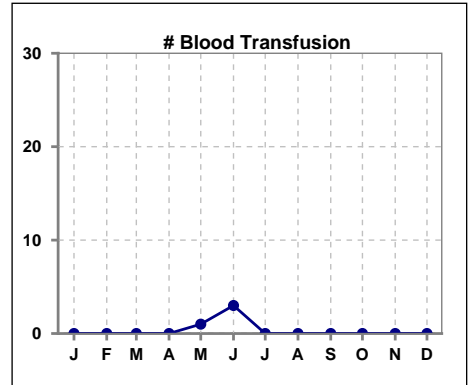
	Jan	Feb	Mar	Apr	May	Jun	Jul	Aug	Sep	Oct	Nov	Dec
# % Sat	46			43	14		46			45		
# % Sat 30 to 50	12			21	7		14			24		
Pop. Mean	26			29	27		30			30		
Std. Deviation	11			10	12		12			10		
% % Sat 30 to 50	26%			49%	50%		30%			53%		



	Jan	Feb	Mar	Apr	May	Jun	Jul	Aug	Sep	Oct	Nov	Dec
# % Sat	46			43	14		46			45		
# % Sat > 50	2			0	0		3			0		
Pop. Mean	26			29	27		30			30		
Std. Deviation	11			10	12		12			10		
% % Sat > 50	4%			0%	0%		7%			0%		



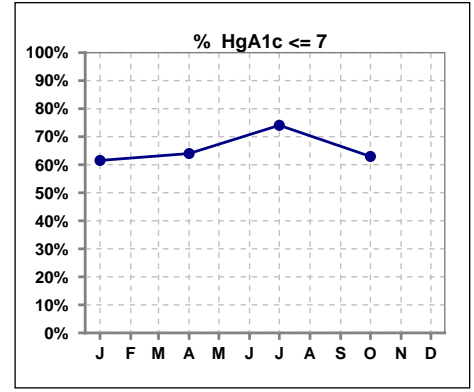
	Jan	Feb	Mar	Apr	May	Jun	Jul	Aug	Sep	Oct	Nov	Dec
# Patient	46	46	46	43	45	46	46	45	45	46	48	48
# Blood Transfusion	0	0	0	0	1	3	0	0	0	0	0	0



Methodology: a) All labs for 'Adequacy of Dialysis', 'Nutrition', 'Osteodystrophy', 'Anemia' and 'Diabetes' based on last value of month; b) BP's and #L processed are average of all values for month; c) Access data takes last access of month; d) Values for SGA and 'Infection Control' use most recent result.

VI. Diabetes

	Jan	Feb	Mar	Apr	May	Jun	Jul	Aug	Sep	Oct	Nov	Dec
# HgA1c	26			25			27			27		
# HgA1c <= 7	16			16			20			17		
Pop. Mean	7.0			7.0			6.7			6.7		
Std. Deviation	1.59			1.89			1.22			1.52		
% HgA1c <= 7	62%			64%			74%			63%		

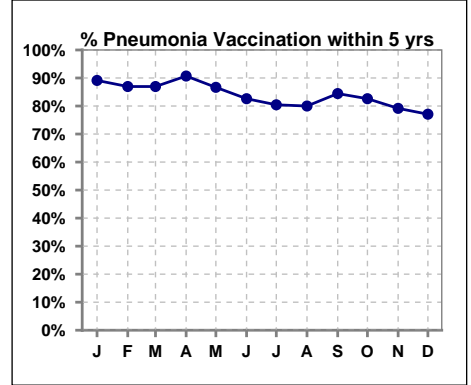


Methodology: a) All labs for 'Adequacy of Dialysis', 'Nutrition', 'Osteodystrophy', 'Anemia' and 'Diabetes' based on last value of month; b) BP's and #L processed are average of all values for month; c) Access data takes last access of month; d) Values for SGA and 'Infection Control' use most recent result.

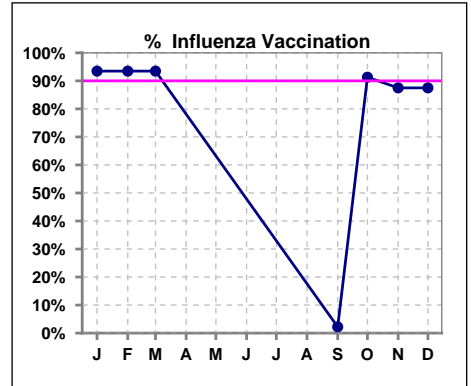
VII. Infection Control

Pneumonia vaccination within the past five years

	Jan	Feb	Mar	Apr	May	Jun	Jul	Aug	Sep	Oct	Nov	Dec
# Patient	46	46	46	43	45	46	46	45	45	46	48	48
# Pneumonia	41	40	40	39	39	38	37	36	38	38	38	37
% Pneumonia	89%	87%	87%	91%	87%	83%	80%	80%	84%	83%	79%	77%



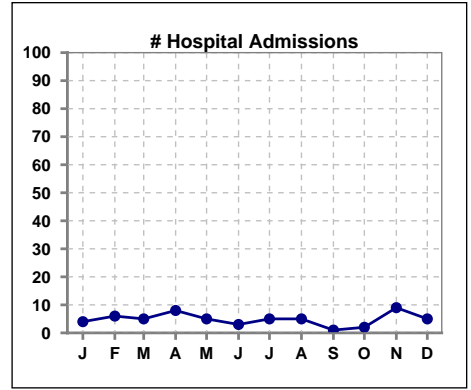
	Jan	Feb	Mar	Apr	May	Jun	Jul	Aug	Sep	Oct	Nov	Dec
# Patient	46	46	46						45	46	48	48
# Influenza	43	43	43						1	42	42	42
% Influenza	93%	93%	93%						2%	91%	88%	88%



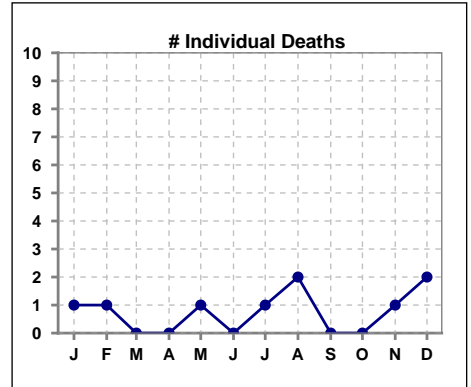
Methodology: a) All labs for 'Adequacy of Dialysis', 'Nutrition', 'Osteodystrophy', 'Anemia' and 'Diabetes' based on last value of month; b) BP's and #L processed are average of all values for month; c) Access data takes last access of month; d) Values for SGA and 'Infection Control' use most recent result.

VIII. Outcome measures

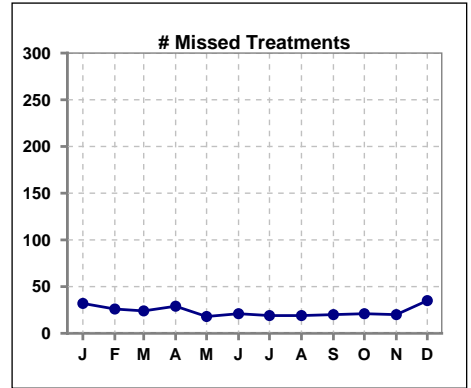
	Jan	Feb	Mar	Apr	May	Jun	Jul	Aug	Sep	Oct	Nov	Dec
# Patient	46	46	46	43	45	46	46	45	45	46	48	48
# Hospital Admissions	4	6	5	8	5	3	5	5	1	2	9	5



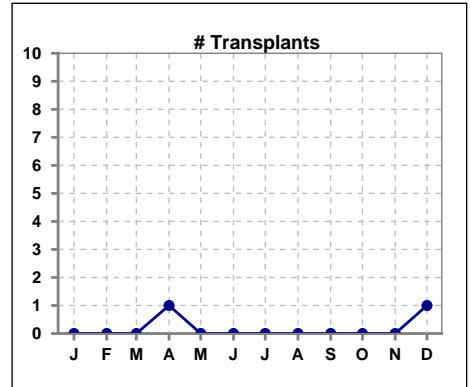
	Jan	Feb	Mar	Apr	May	Jun	Jul	Aug	Sep	Oct	Nov	Dec
# Patient	46	46	46	43	45	46	46	45	45	46	48	48
# Individual Deaths	1	1	0	0	1	0	1	2	0	0	1	2



	Jan	Feb	Mar	Apr	May	Jun	Jul	Aug	Sep	Oct	Nov	Dec
# Patient	46	46	46	43	45	46	46	45	45	46	48	48
# Missed Treatments	32	26	24	29	18	21	19	19	20	21	20	35



	Jan	Feb	Mar	Apr	May	Jun	Jul	Aug	Sep	Oct	Nov	Dec
# Patient	46	46	46	43	45	46	46	45	45	46	48	48
# Transplants	0	0	0	1	0	0	0	0	0	0	0	1



Methodology: a) All labs for 'Adequacy of Dialysis', 'Nutrition', 'Osteodystrophy', 'Anemia' and 'Diabetes' based on last value of month; b) BP's and #L processed are average of all values for month; c) Access data takes last access of month; d) Values for SGA and 'Infection Control' use most recent result.