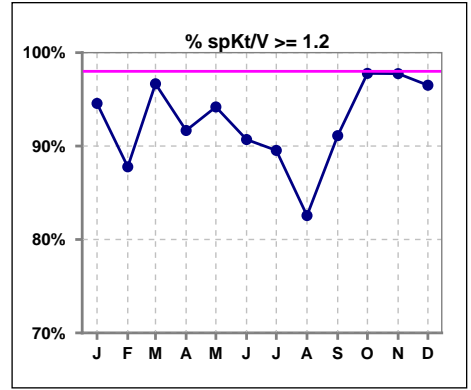
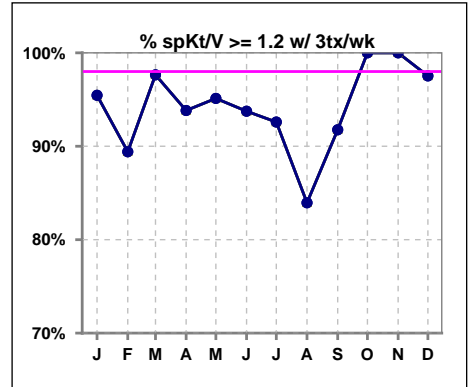


I. ADEQUACY OF DIALYSIS

	Jan	Feb	Mar	Apr	May	Jun	Jul	Aug	Sep	Oct	Nov	Dec
# spKt/V	92	90	90	84	86	86	86	86	90	90	89	86
# spKt/V >= 1.2	87	79	87	77	81	78	77	71	82	88	87	83
Pop. Mean	1.58	1.53	1.59	1.57	1.55	1.52	1.58	1.51	1.61	1.60	1.57	1.54
Std. Deviation	0.31	0.30	0.26	0.27	0.28	0.26	0.32	0.32	0.31	0.26	0.26	0.24
% spKt/V >= 1.2	95%	88%	97%	92%	94%	91%	90%	83%	91%	98%	98%	97%

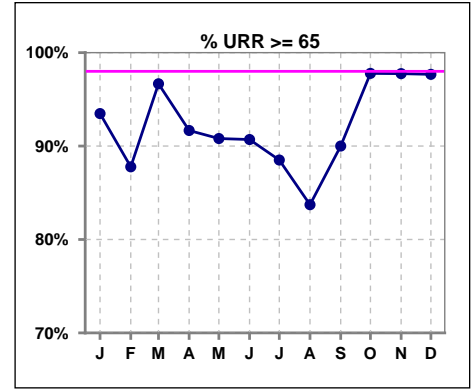


	Jan	Feb	Mar	Apr	May	Jun	Jul	Aug	Sep	Oct	Nov	Dec
# spKt/V w/ 3tx/wk	88	85	85	81	82	80	81	81	85	84	84	81
# spKt/V >= 1.2 w/3tx/wk	84	76	83	76	78	75	75	68	78	84	84	79
Pop. Mean	1.59	1.53	1.60	1.57	1.55	1.53	1.59	1.52	1.61	1.61	1.58	1.54
Std. Deviation	0.29	0.28	0.24	0.24	0.24	0.24	0.29	0.30	0.30	0.25	0.24	0.24
% >= 1.2 w/3tx/wk	95%	89%	98%	94%	95%	94%	93%	84%	92%	100%	100%	98%

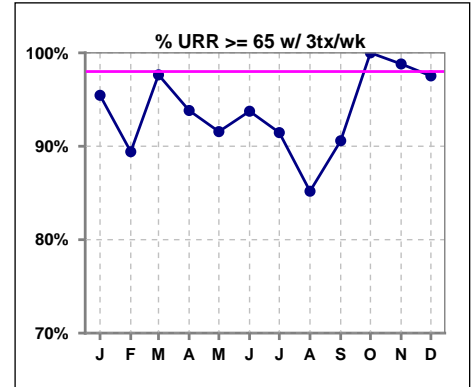


I. ADEQUACY OF DIALYSIS - CONT.

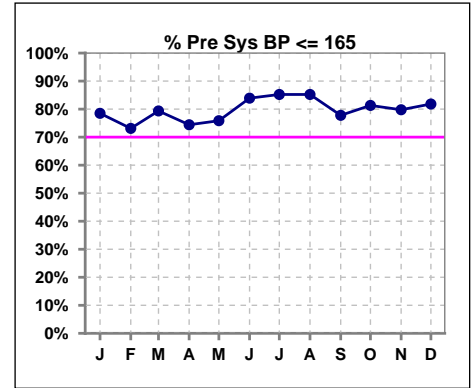
	Jan	Feb	Mar	Apr	May	Jun	Jul	Aug	Sep	Oct	Nov	Dec
# URR	92	90	90	84	87	86	87	86	90	90	89	86
# URR >= 65	86	79	87	77	79	78	77	72	81	88	87	84
Pop. Mean	74	73	74	74	73	73	73	72	74	75	74	73
Std. Deviation	6.86	6.50	5.94	5.99	7.46	5.89	9.64	7.46	7.05	5.20	5.49	5.04
% URR >= 65	93%	88%	97%	92%	91%	91%	89%	84%	90%	98%	98%	98%



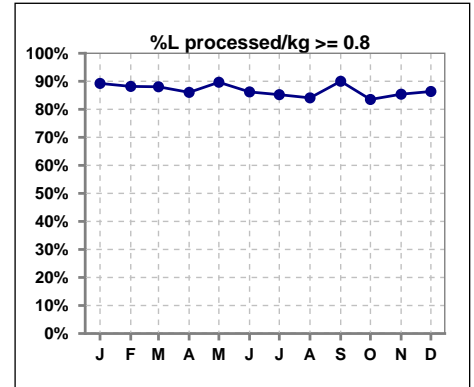
	Jan	Feb	Mar	Apr	May	Jun	Jul	Aug	Sep	Oct	Nov	Dec
# URR w/ 3tx/wk	88	85	85	81	83	80	82	81	85	84	84	81
# URR>=65 w/ 3tx/wk	84	76	83	76	76	75	75	69	77	84	83	79
Pop. Mean	74	73	75	74	73	73	74	73	75	75	74	73
Std. Deviation	6.28	6.02	5.28	5.27	7.04	5.53	9.41	6.95	6.95	4.90	4.81	4.99
% URR>=65 w/ 3tx/wk	95%	89%	98%	94%	92%	94%	91%	85%	91%	100%	99%	98%



	Jan	Feb	Mar	Apr	May	Jun	Jul	Aug	Sep	Oct	Nov	Dec
# Pre Sys BP	93	93	92	86	87	87	88	88	90	91	89	88
# Pre Sys BP <= 165	73	68	73	64	66	73	75	75	70	75	71	72
Pop. Mean	147	151	149	150	150	144	142	143	147	146	148	146
Std. Deviation	19.2	22.1	21.2	21.3	21.9	21.5	22.4	22.0	22.8	20.6	22.3	21.8
% Pre Sys BP <=165	78%	73%	79%	74%	76%	84%	85%	85%	78%	81%	80%	82%



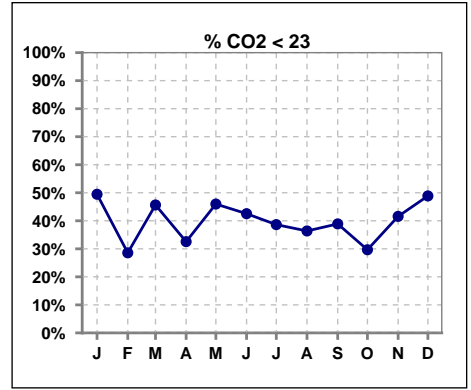
	Jan	Feb	Mar	Apr	May	Jun	Jul	Aug	Sep	Oct	Nov	Dec
# L processed/kg	93	93	92	86	87	87	88	88	90	91	89	88
# L processed/kg>=0.8	83	82	81	74	78	75	75	74	81	76	76	76
Pop. Mean	1	1	1	1	1	1	1	1	1	1	1	1
Std. Deviation	0.2	0.2	0.2	0.2	0.2	0.2	0.3	0.2	0.2	0.2	0.3	0.2
% L processed/kg>=0.8	89%	88%	88%	86%	90%	86%	85%	84%	90%	84%	85%	86%



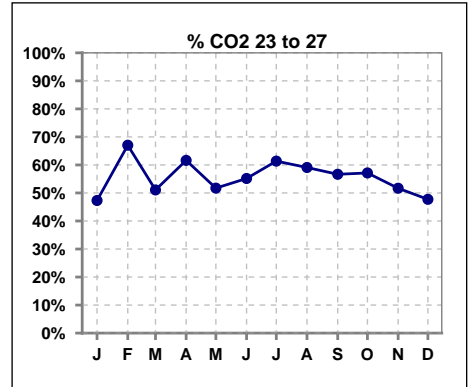
Methodology: a) All labs for 'Adequacy of Dialysis', 'Nutrition', 'Osteodystrophy', 'Anemia' and 'Diabetes' based on last value of month; b) BP's and #L processed are average of all values for month; c) Access data takes last access of month; d) Values for SGA and 'Infection Control' use most recent result.

I. ADEQUACY OF DIALYSIS - CONT.

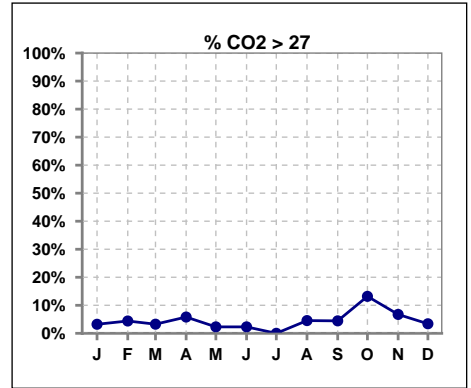
	Jan	Feb	Mar	Apr	May	Jun	Jul	Aug	Sep	Oct	Nov	Dec
# CO2	93	91	92	86	87	87	88	88	90	91	89	88
# CO2 < 23	46	26	42	28	40	37	34	32	35	27	37	43
Pop. Mean	22	23	22	24	23	23	23	23	23	24	23	23
Std. Deviation	2.67	2.63	2.96	2.49	2.37	2.76	2.54	3.33	3.17	3.47	3.41	3.04
% CO2 < 23	49%	29%	46%	33%	46%	43%	39%	36%	39%	30%	42%	49%



	Jan	Feb	Mar	Apr	May	Jun	Jul	Aug	Sep	Oct	Nov	Dec
# CO2	93	91	92	86	87	87	88	88	90	91	89	88
# CO2 23 to 27	44	61	47	53	45	48	54	52	51	52	46	42
Pop. Mean	22	23	22	24	23	23	23	23	23	24	23	23
Std. Deviation	2.67	2.63	2.96	2.49	2.37	2.76	2.54	3.33	3.17	3.47	3.41	3.04
% CO2 23 to 27	47%	67%	51%	62%	52%	55%	61%	59%	57%	57%	52%	48%



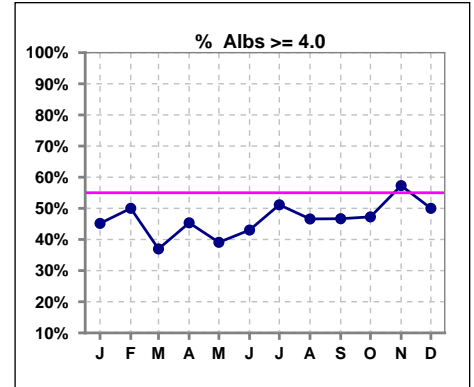
	Jan	Feb	Mar	Apr	May	Jun	Jul	Aug	Sep	Oct	Nov	Dec
# CO2	93	91	92	86	87	87	88	88	90	91	89	88
# CO2 > 27	3	4	3	5	2	2	0	4	4	12	6	3
Pop. Mean	22	23	22	24	23	23	23	23	23	24	23	23
Std. Deviation	2.67	2.63	2.96	2.49	2.37	2.76	2.54	3.33	3.17	3.47	3.41	3.04
% CO2 > 27	3%	4%	3%	6%	2%	2%	0%	5%	4%	13%	7%	3%



*Albumin values use BCG method - as of July 2001

II. NUTRITION

	Jan	Feb	Mar	Apr	May	Jun	Jul	Aug	Sep	Oct	Nov	Dec
# Albumin	93	92	92	86	87	86	88	88	90	91	89	88
# Albumin >= 4.0	42	46	34	39	34	37	45	41	42	43	51	44
Pop. Mean	3.9	3.9	3.8	3.9	3.8	3.8	3.9	3.9	3.9	3.9	3.9	3.9
Std. Deviation	0.37	0.35	0.39	0.34	0.36	0.38	0.34	0.33	0.33	0.37	0.36	0.35
% Alb >= 4.0	45%	50%	37%	45%	39%	43%	51%	47%	47%	47%	57%	50%

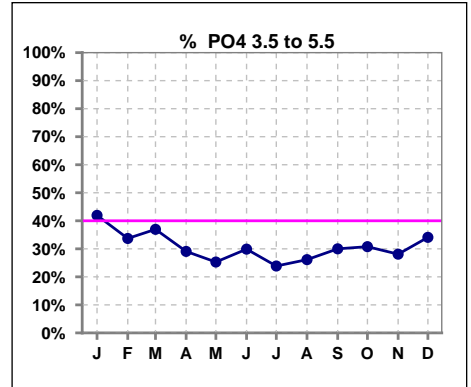


Methodology: a) All labs for 'Adequacy of Dialysis', 'Nutrition', 'Osteodystrophy', 'Anemia' and 'Diabetes' based on last value of month; b) BP's and #L processed are average of all values for month; c) Access data takes last access of month; d) Values for SGA and 'Infection Control' use most recent result.

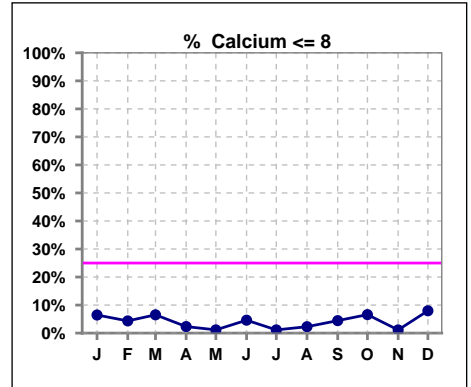
Lab methodology for PTH changed January 2012

III. OSTEODYSTROPHY

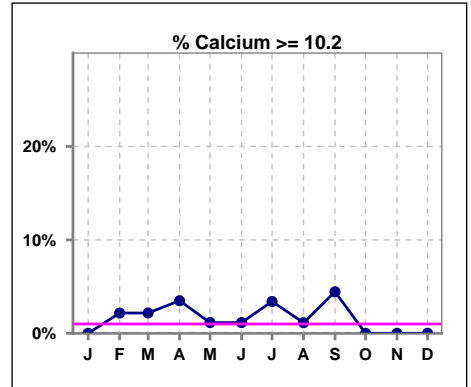
	Jan	Feb	Mar	Apr	May	Jun	Jul	Aug	Sep	Oct	Nov	Dec
# PO4	93	92	92	86	87	87	88	88	90	91	89	88
# PO4 3.5 to 5.5	39	31	34	25	22	26	21	23	27	28	25	30
Pop. Mean	6.2	6.5	6.2	6.4	6.7	6.7	6.5	6.8	6.7	6.7	6.6	6.5
Std. Deviation	1.66	1.87	1.85	1.66	1.87	2.08	1.82	2.10	2.03	2.24	2.27	1.78
% PO4 3.5 to 5.5	42%	34%	37%	29%	25%	30%	24%	26%	30%	31%	28%	34%



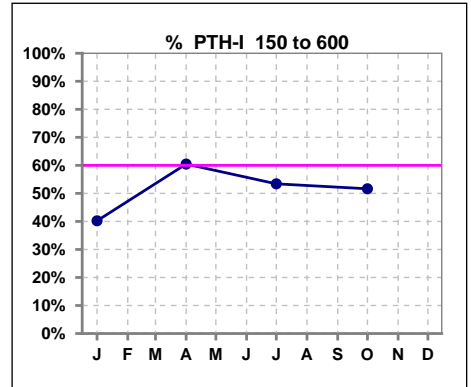
	Jan	Feb	Mar	Apr	May	Jun	Jul	Aug	Sep	Oct	Nov	Dec
# Calcium	93	92	92	86	87	87	88	88	90	91	89	88
# Calcium <= 8	6	4	6	2	1	4	1	2	4	6	1	7
Pop. Mean	9.1	9.3	9.2	9.2	9.3	9.2	9.4	9.4	9.2	9.2	9.3	9.2
Std. Deviation	0.67	0.61	0.67	0.55	0.60	0.65	0.56	0.59	0.70	0.62	0.51	0.64
% Calcium <= 8	6%	4%	7%	2%	1%	5%	1%	2%	4%	7%	1%	8%



	Jan	Feb	Mar	Apr	May	Jun	Jul	Aug	Sep	Oct	Nov	Dec
# Calcium	93	92	92	86	87	87	88	88	90	91	89	88
# Calcium >= 10.2	0	2	2	3	1	1	3	1	4	0	0	0
Pop. Mean	9.1	9.3	9.2	9.2	9.3	9.2	9.4	9.4	9.2	9.2	9.3	9.2
Std. Deviation	0.67	0.61	0.67	0.55	0.60	0.65	0.56	0.59	0.70	0.62	0.51	0.64
% Calcium >= 10.2	0%	2%	2%	3%	1%	1%	3%	1%	4%	0%	0%	0%



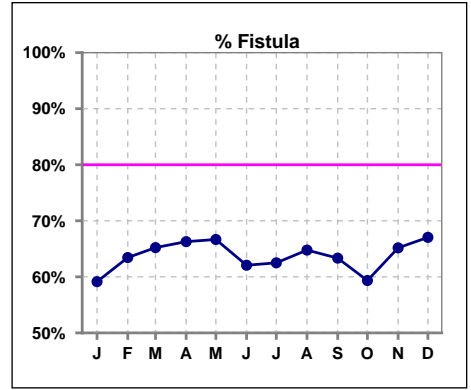
	Jan	Feb	Mar	Apr	May	Jun	Jul	Aug	Sep	Oct	Nov	Dec
# PTH-I	92			86			88			91		
# PTH-I 150 to 600	37			52			47			47		
Pop. Mean	720			583			590			610		
Std. Deviation	475			505			508			506		
% PTH-I 150 to 600	40%			60%			53%			52%		



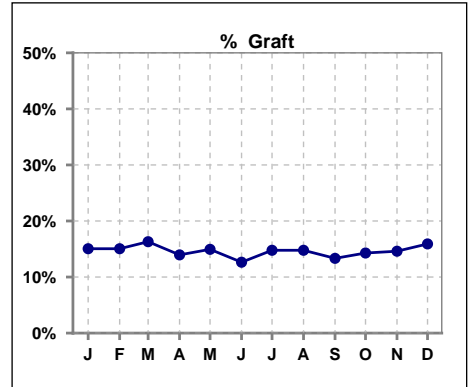
Methodology: a) All labs for 'Adequacy of Dialysis', 'Nutrition', 'Osteodystrophy', 'Anemia' and 'Diabetes' based on last value of month; b) BP's and #L processed are average of all values for month; c) Access data takes last access of month; d) Values for SGA and 'Infection Control' use most recent result.

IV. ACCESS

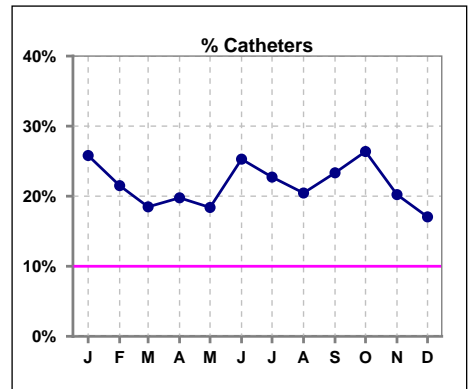
	Jan	Feb	Mar	Apr	May	Jun	Jul	Aug	Sep	Oct	Nov	Dec
# Access	93	93	92	86	87	87	88	88	90	91	89	88
# Fistula	55	59	60	57	58	54	55	57	57	54	58	59
% Fistula	59%	63%	65%	66%	67%	62%	63%	65%	63%	59%	65%	67%



	Jan	Feb	Mar	Apr	May	Jun	Jul	Aug	Sep	Oct	Nov	Dec
# Access	93	93	92	86	87	87	88	88	90	91	89	88
# Graft	14	14	15	12	13	11	13	13	12	13	13	14
% Graft	15%	15%	16%	14%	15%	13%	15%	15%	13%	14%	15%	16%



	Jan	Feb	Mar	Apr	May	Jun	Jul	Aug	Sep	Oct	Nov	Dec
# Access	93	93	92	86	87	87	88	88	90	91	89	88
# Catheters	24	20	17	17	16	22	20	18	21	24	18	15
% Catheters	26%	22%	18%	20%	18%	25%	23%	20%	23%	26%	20%	17%



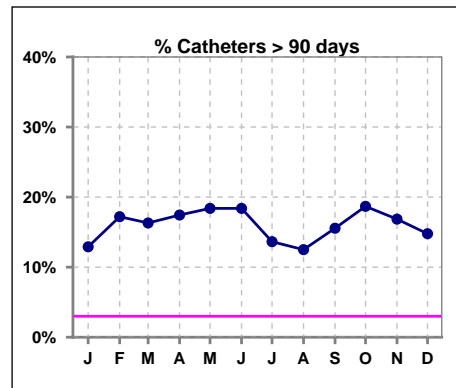
Methodology: a) All labs for 'Adequacy of Dialysis', 'Nutrition', 'Osteodystrophy', 'Anemia' and 'Diabetes' based on last value of month; b) BP's and #L processed are average of all values for month; c) Access data takes last access of month; d) Values for SGA and 'Infection Control' use most recent result.

IV. ACCESS - CONT.

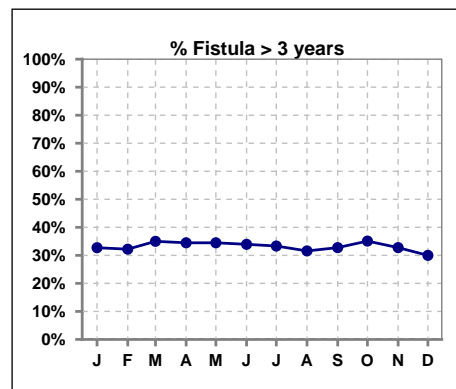
Catheters > 90 days

	Jan	Feb	Mar	Apr	May	Jun	Jul	Aug	Sep	Oct	Nov	Dec
# Access	93	93	92	86	87	87	88	88	90	91	89	88
# Catheters	12	16	15	15	16	16	12	11	14	17	15	13
% Catheters	13%	17%	16%	17%	18%	18%	14%	13%	16%	19%	17%	15%

Definition: Catheter in use on last treatment of the month



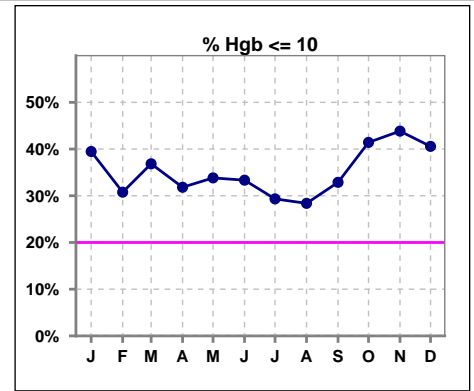
	Jan	Feb	Mar	Apr	May	Jun	Jul	Aug	Sep	Oct	Nov	Dec
# Fistula	55	59	60	58	58	56	54	57	58	57	58	60
# Fistula > 3 yrs	18	19	21	20	20	19	18	18	19	20	19	18
% Fistula > 3 yrs	33%	32%	35%	34%	34%	34%	33%	32%	33%	35%	33%	30%



V. ANEMIA

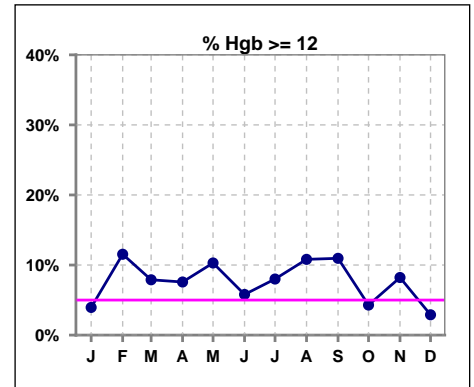
	Jan	Feb	Mar	Apr	May	Jun	Jul	Aug	Sep	Oct	Nov	Dec
# Hgb	76	78	76	66	68	69	75	74	73	70	73	69
# Hgb <= 10	30	24	28	21	23	23	22	21	24	29	32	28
Pop. Mean	10.1	10.6	10.3	10.5	10.4	10.4	10.5	10.5	10.4	10.2	10.2	10.2
Std. Deviation	1.2	1.5	1.3	1.1	1.3	1.2	1.3	1.3	1.3	1.3	1.4	1.3
% Hgb <= 10	39%	31%	37%	32%	34%	33%	29%	28%	33%	41%	44%	41%

Note: Excludes patients who received no ESA in month.



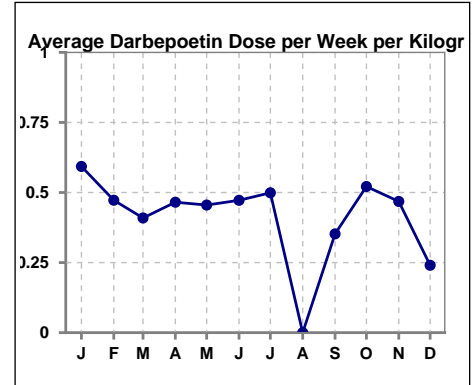
	Jan	Feb	Mar	Apr	May	Jun	Jul	Aug	Sep	Oct	Nov	Dec
# Hgb	76	78	76	66	68	69	75	74	73	70	73	69
# Hgb >= 12	3	9	6	5	7	4	6	8	8	3	6	2
Pop. Mean	10.1	10.6	10.3	10.5	10.4	10.4	10.5	10.5	10.4	10.2	10.2	10.2
Std. Deviation	1.2	1.5	1.3	1.1	1.3	1.2	1.3	1.3	1.3	1.3	1.4	1.3
% Hgb >= 12	4%	12%	8%	8%	10%	6%	8%	11%	11%	4%	8%	3%

Note: Excludes patients who received no ESA in month.



Average Darbepoetin Dose per Week per Kilogram

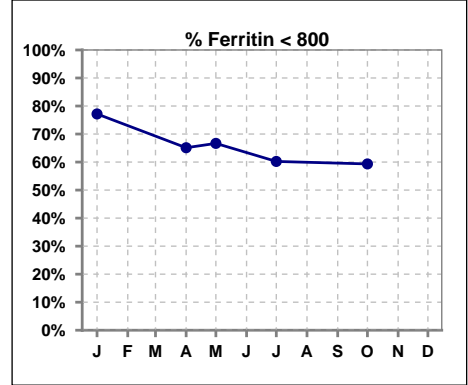
	Jan	Feb	Mar	Apr	May	Jun	Jul	Aug	Sep	Oct	Nov	Dec
# Average Darbepoetin	.6	.5	.4	.5	.5	.5	.5	0	.4	.5	.5	.2



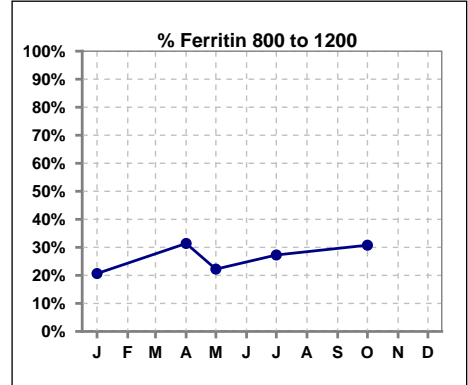
V. ANEMIA - CONT.

Iron Profile

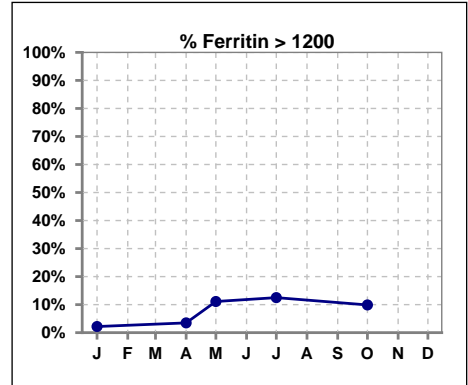
	Jan	Feb	Mar	Apr	May	Jun	Jul	Aug	Sep	Oct	Nov	Dec
# Ferritin	92			86	18		88			91		
# Ferritin < 800	71			56	12		53			54		
Pop. Mean	630			644	728		745			736		
Std. Deviation	775			331	302		389			430		
% Ferritin < 800	77%			65%	67%		60%			59%		



	Jan	Feb	Mar	Apr	May	Jun	Jul	Aug	Sep	Oct	Nov	Dec
# Ferritin	92			86	18		88			91		
# Ferritin 800 to 1200	19			27	4		24			28		
Pop. Mean	630			644	728		745			736		
Std. Deviation	775			331	302		389			430		
% Ferritin 800 to 1200	21%			31%	22%		27%			31%		

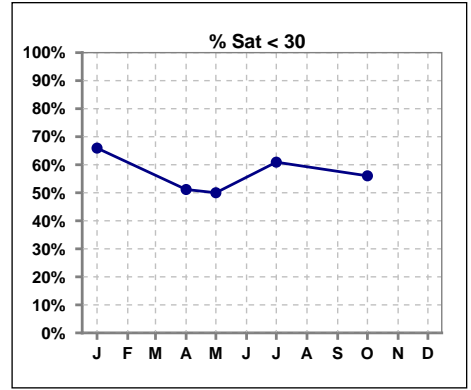


	Jan	Feb	Mar	Apr	May	Jun	Jul	Aug	Sep	Oct	Nov	Dec
# Ferritin	92			86	18		88			91		
# Ferritin > 1200	2			3	2		11			9		
Pop. Mean	630			644	728		745			736		
Std. Deviation	775			331	302		389			430		
% Ferritin > 1200	2%			3%	11%		13%			10%		

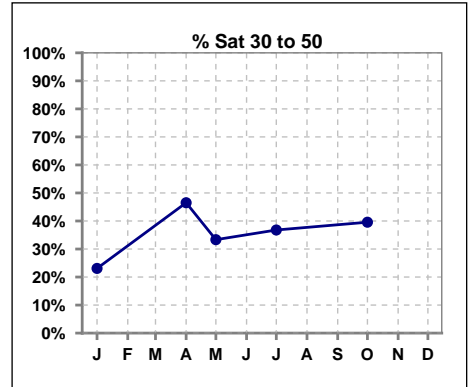


V. ANEMIA - CONT.

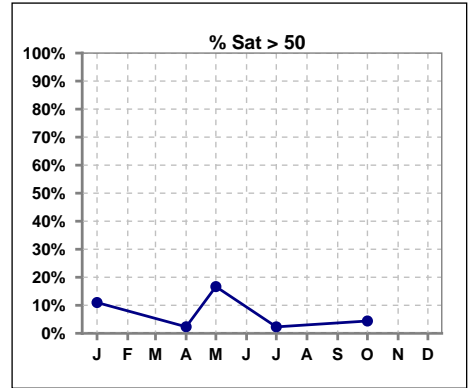
	Jan	Feb	Mar	Apr	May	Jun	Jul	Aug	Sep	Oct	Nov	Dec
# % Sat	91			86	18		87			91		
# % Sat < 30	60			44	9		53			51		
Pop. Mean	28			29	34		28			30		
Std. Deviation	17			12	22		14			13		
% % Sat < 30	66%			51%	50%		61%			56%		



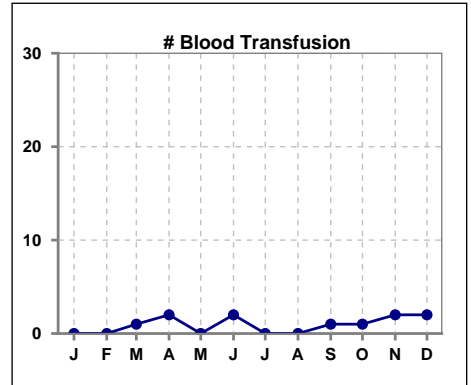
	Jan	Feb	Mar	Apr	May	Jun	Jul	Aug	Sep	Oct	Nov	Dec
# % Sat	91			86	18		87			91		
# % Sat 30 to 50	21			40	6		32			36		
Pop. Mean	28			29	34		28			30		
Std. Deviation	17			12	22		14			13		
% % Sat 30 to 50	23%			47%	33%		37%			40%		



	Jan	Feb	Mar	Apr	May	Jun	Jul	Aug	Sep	Oct	Nov	Dec
# % Sat	91			86	18		87			91		
# % Sat > 50	10			2	3		2			4		
Pop. Mean	28			29	34		28			30		
Std. Deviation	17			12	22		14			13		
% % Sat > 50	11%			2%	17%		2%			4%		

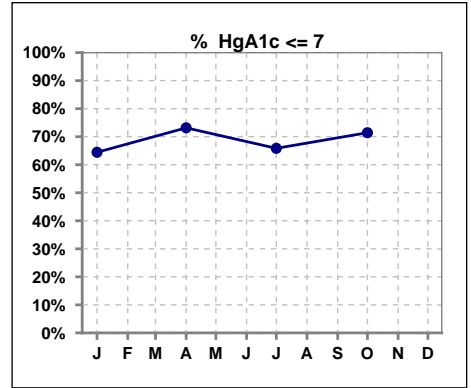


	Jan	Feb	Mar	Apr	May	Jun	Jul	Aug	Sep	Oct	Nov	Dec
# Patient	93	93	92	86	87	88	89	88	90	91	89	89
# Blood Transfusion	0	0	1	2	0	2	0	0	1	1	2	2



VI. Diabetes

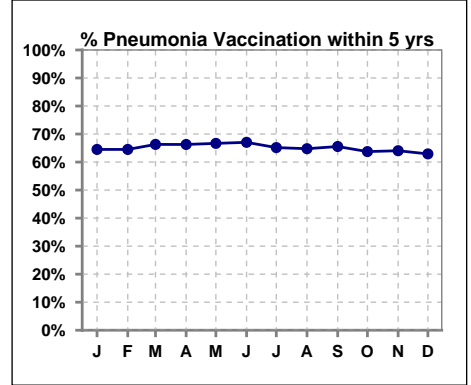
	Jan	Feb	Mar	Apr	May	Jun	Jul	Aug	Sep	Oct	Nov	Dec
# HgA1c	45			41			41			42		
# HgA1c <= 7	29			30			27			30		
Pop. Mean	6.9			6.5			6.6			6.6		
Std. Deviation	1.86			1.48			1.73			1.77		
% HgA1c <= 7	64%			73%			66%			71%		



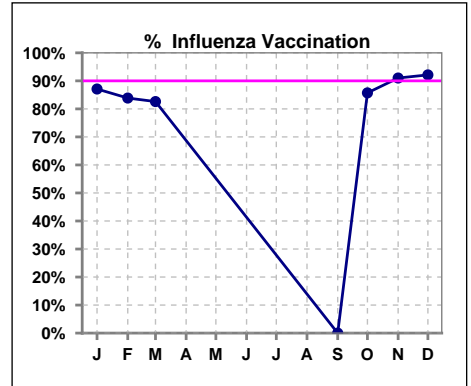
VII. Infection Control

Pneumonia vaccination within the past five years

	Jan	Feb	Mar	Apr	May	Jun	Jul	Aug	Sep	Oct	Nov	Dec
# Patient	93	93	92	86	87	88	89	88	90	91	89	89
# Pneumonia	60	60	61	57	58	59	58	57	59	58	57	56
% Pneumonia	65%	65%	66%	66%	67%	67%	65%	65%	66%	64%	64%	63%



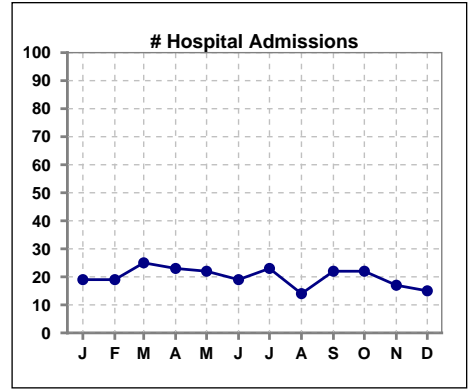
	Jan	Feb	Mar	Apr	May	Jun	Jul	Aug	Sep	Oct	Nov	Dec
# Patient	93	93	92						90	91	89	89
# Influenza	81	78	76						0	78	81	82
% Influenza	87%	84%	83%						0%	86%	91%	92%



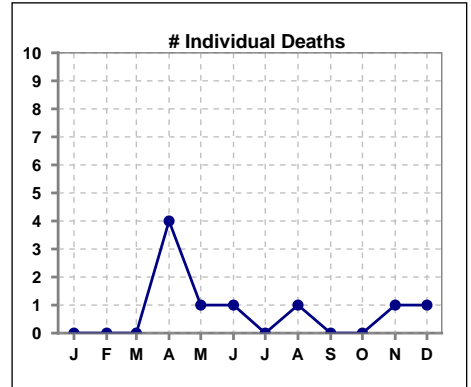
Methodology: a) All labs for 'Adequacy of Dialysis', 'Nutrition', 'Osteodystrophy', 'Anemia' and 'Diabetes' based on last value of month; b) BP's and #L processed are average of all values for month; c) Access data takes last access of month; d) Values for SGA and 'Infection Control' use most recent result.

VIII. Outcome measures

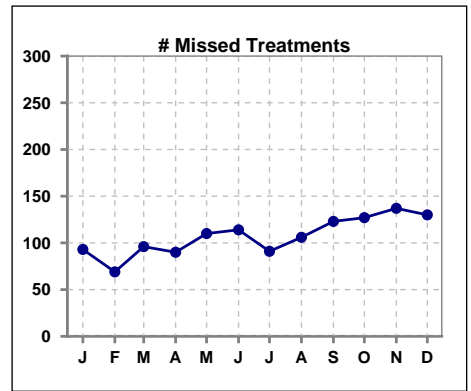
	Jan	Feb	Mar	Apr	May	Jun	Jul	Aug	Sep	Oct	Nov	Dec
# Patient	93	93	92	86	87	88	89	88	90	91	89	89
# Hospital Admissions	19	19	25	23	22	19	23	14	22	22	17	15



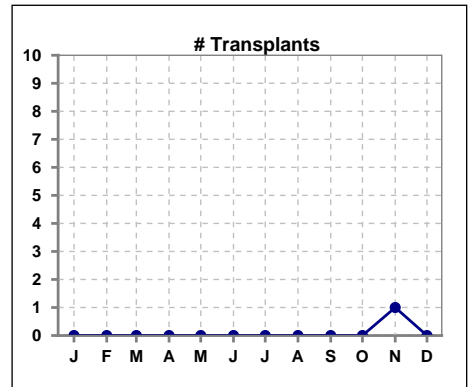
	Jan	Feb	Mar	Apr	May	Jun	Jul	Aug	Sep	Oct	Nov	Dec
# Patient	93	93	92	86	87	88	89	88	90	91	89	89
# Individual Deaths	0	0	0	4	1	1	0	1	0	0	1	1



	Jan	Feb	Mar	Apr	May	Jun	Jul	Aug	Sep	Oct	Nov	Dec
# Patient	93	93	92	86	87	88	89	88	90	91	89	89
# Missed Treatments	93	69	96	90	110	114	91	106	123	127	137	130



	Jan	Feb	Mar	Apr	May	Jun	Jul	Aug	Sep	Oct	Nov	Dec
# Patient	93	93	92	86	87	88	89	88	90	91	89	89
# Transplants	0	0	0	0	0	0	0	0	0	0	1	0



Methodology: a) All labs for 'Adequacy of Dialysis', 'Nutrition', 'Osteodystrophy', 'Anemia' and 'Diabetes' based on last value of month; b) BP's and #L processed are average of all values for month; c) Access data takes last access of month; d) Values for SGA and 'Infection Control' use most recent result.