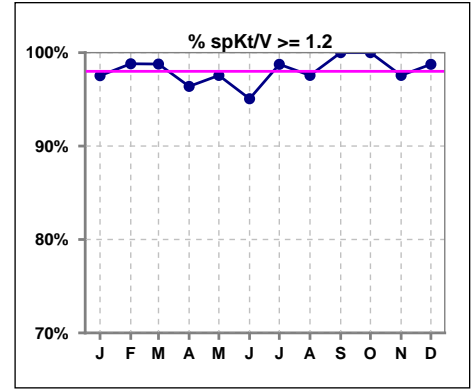
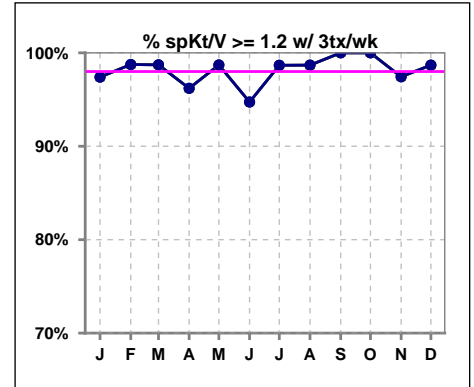


**I. ADEQUACY OF DIALYSIS**

	Jan	Feb	Mar	Apr	May	Jun	Jul	Aug	Sep	Oct	Nov	Dec
# spKt/V	81	84	82	83	82	81	80	82	78	81	82	80
# spKt/V >= 1.2	79	83	81	80	80	77	79	80	78	81	80	79
Pop. Mean	1.60	1.63	1.62	1.57	1.63	1.60	1.60	1.60	1.66	1.63	1.58	1.58
Std. Deviation	0.31	0.31	0.31	0.28	0.32	0.35	0.33	0.32	0.26	0.26	0.27	0.28
% spKt/V >= 1.2	98%	99%	99%	96%	98%	95%	99%	98%	100%	100%	98%	99%

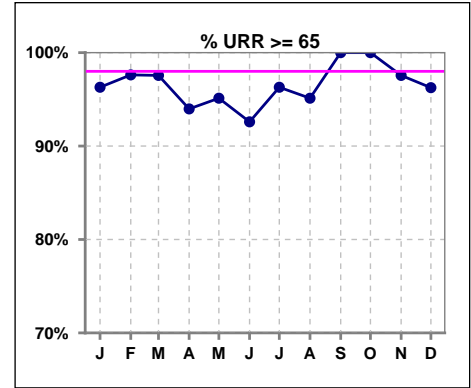


	Jan	Feb	Mar	Apr	May	Jun	Jul	Aug	Sep	Oct	Nov	Dec
# spKt/V w/ 3tx/wk	77	80	78	79	77	76	75	76	73	76	78	76
# spKt/V >= 1.2 w/3tx/wk	75	79	77	76	76	72	74	75	73	76	76	75
Pop. Mean	1.59	1.64	1.63	1.57	1.63	1.60	1.60	1.62	1.67	1.63	1.57	1.57
Std. Deviation	0.31	0.31	0.32	0.28	0.31	0.35	0.33	0.32	0.27	0.27	0.27	0.27
% >= 1.2 w/3tx/wk	97%	99%	99%	96%	99%	95%	99%	99%	100%	100%	97%	99%

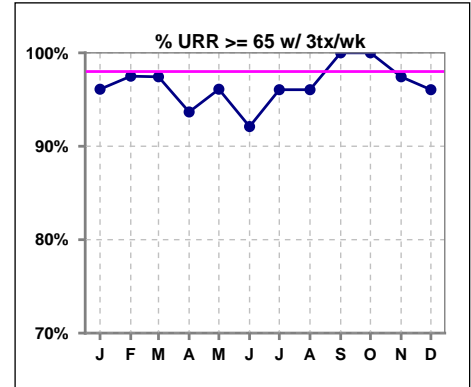


**I. ADEQUACY OF DIALYSIS - CONT.**

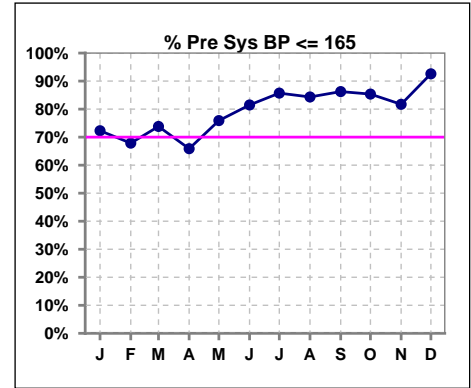
	Jan	Feb	Mar	Apr	May	Jun	Jul	Aug	Sep	Oct	Nov	Dec
# URR	81	84	82	83	82	81	81	82	78	81	82	80
# URR >= 65	78	82	80	78	78	75	78	78	78	81	80	77
Pop. Mean	74	75	75	74	75	74	74	74	76	75	74	74
Std. Deviation	7.00	5.98	6.17	6.06	6.48	7.19	6.09	5.98	4.99	5.08	5.24	5.92
% URR >= 65	96%	98%	98%	94%	95%	93%	96%	95%	100%	100%	98%	96%



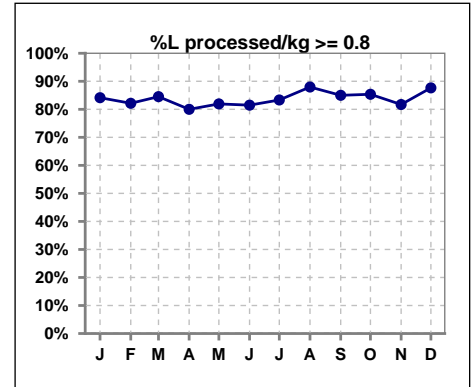
	Jan	Feb	Mar	Apr	May	Jun	Jul	Aug	Sep	Oct	Nov	Dec
# URR w/ 3tx/wk	77	80	78	79	77	76	76	76	73	76	78	76
# URR>=65 w/ 3tx/wk	74	78	76	74	74	70	73	73	73	76	76	73
Pop. Mean	74	75	75	74	75	74	74	75	76	75	74	74
Std. Deviation	7.07	6.07	6.27	6.06	6.37	7.24	6.21	5.79	5.04	5.10	5.24	5.88
% URR>=65 w/ 3tx/wk	96%	98%	97%	94%	96%	92%	96%	96%	100%	100%	97%	96%



	Jan	Feb	Mar	Apr	May	Jun	Jul	Aug	Sep	Oct	Nov	Dec
# Pre Sys BP	83	84	84	85	83	81	84	83	80	82	82	81
# Pre Sys BP <= 165	60	57	62	56	63	67	72	71	69	71	67	75
Pop. Mean	153	153	153	154	152	150	145	148	147	149	148	146
Std. Deviation	17.1	17.1	18.5	19.1	17.9	17.5	16.9	16.7	16.7	16.2	16.4	16.0
% Pre Sys BP <=165	72%	68%	74%	66%	76%	81%	86%	84%	86%	85%	82%	93%



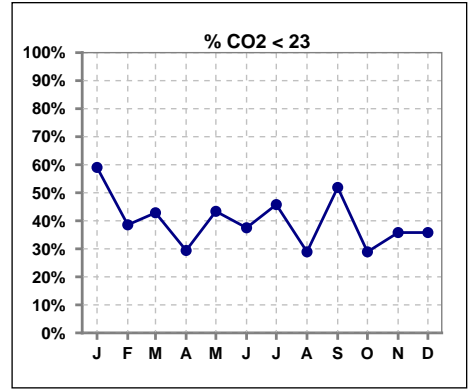
	Jan	Feb	Mar	Apr	May	Jun	Jul	Aug	Sep	Oct	Nov	Dec
# L processed/kg	82	84	84	85	83	81	84	83	80	82	82	81
# L processed/kg>=0.8	69	69	71	68	68	66	70	73	68	70	67	71
Pop. Mean	1	1	1	1	1	1	1	1	1	1	1	1
Std. Deviation	0.3	0.3	0.3	0.2	0.3	0.2	0.2	0.2	0.2	0.2	0.2	0.2
% L processed/kg>=0.8	84%	82%	85%	80%	82%	81%	83%	88%	85%	85%	82%	88%



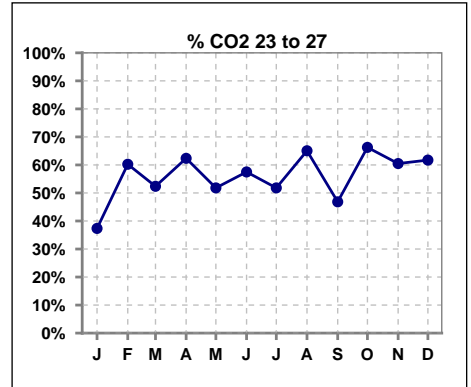
Methodology: a) All labs for 'Adequacy of Dialysis', 'Nutrition', 'Osteodystrophy', 'Anemia' and 'Diabetes' based on last value of month; b) BP's and #L processed are average of all values for month; c) Access data takes last access of month; d) Values for SGA and 'Infection Control' use most recent result.

**I. ADEQUACY OF DIALYSIS - CONT.**

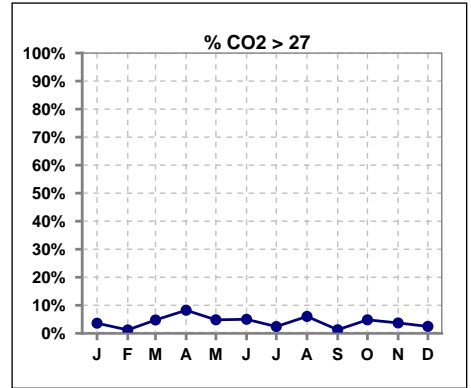
	Jan	Feb	Mar	Apr	May	Jun	Jul	Aug	Sep	Oct	Nov	Dec
# CO2	83	83	84	85	83	80	83	83	79	83	81	81
# CO2 < 23	49	32	36	25	36	30	38	24	41	24	29	29
Pop. Mean	22	23	23	24	23	23	23	23	23	23	23	23
Std. Deviation	2.90	2.65	3.15	2.58	3.40	2.80	2.79	3.13	2.76	2.74	2.73	2.59
<b>% CO2 &lt; 23</b>	<b>59%</b>	<b>39%</b>	<b>43%</b>	<b>29%</b>	<b>43%</b>	<b>38%</b>	<b>46%</b>	<b>29%</b>	<b>52%</b>	<b>29%</b>	<b>36%</b>	<b>36%</b>



	Jan	Feb	Mar	Apr	May	Jun	Jul	Aug	Sep	Oct	Nov	Dec
# CO2	83	83	84	85	83	80	83	83	79	83	81	81
# CO2 23 to 27	31	50	44	53	43	46	43	54	37	55	49	50
Pop. Mean	22	23	23	24	23	23	23	23	23	23	23	23
Std. Deviation	2.90	2.65	3.15	2.58	3.40	2.80	2.79	3.13	2.76	2.74	2.73	2.59
<b>% CO2 23 to 27</b>	<b>37%</b>	<b>60%</b>	<b>52%</b>	<b>62%</b>	<b>52%</b>	<b>58%</b>	<b>52%</b>	<b>65%</b>	<b>47%</b>	<b>66%</b>	<b>60%</b>	<b>62%</b>



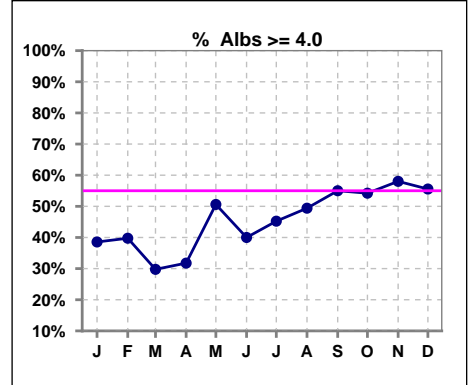
	Jan	Feb	Mar	Apr	May	Jun	Jul	Aug	Sep	Oct	Nov	Dec
# CO2	83	83	84	85	83	80	83	83	79	83	81	81
# CO2 > 27	3	1	4	7	4	4	2	5	1	4	3	2
Pop. Mean	22	23	23	24	23	23	23	23	23	23	23	23
Std. Deviation	2.90	2.65	3.15	2.58	3.40	2.80	2.79	3.13	2.76	2.74	2.73	2.59
<b>% CO2 &gt; 27</b>	<b>4%</b>	<b>1%</b>	<b>5%</b>	<b>8%</b>	<b>5%</b>	<b>5%</b>	<b>2%</b>	<b>6%</b>	<b>1%</b>	<b>5%</b>	<b>4%</b>	<b>2%</b>



\*Albumin values use BCG method - as of July 2001

**II. NUTRITION**

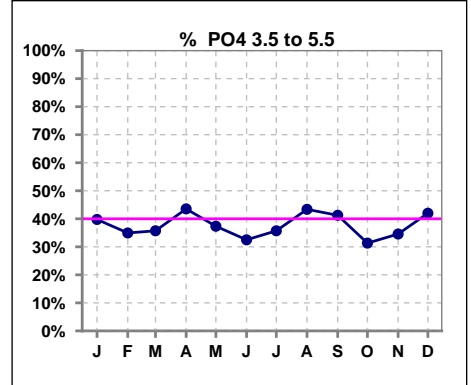
	Jan	Feb	Mar	Apr	May	Jun	Jul	Aug	Sep	Oct	Nov	Dec
# Albumin	83	83	84	85	83	80	84	83	80	83	81	81
# Albumin >= 4.0	32	33	25	27	42	32	38	41	44	45	47	45
Pop. Mean	3.8	3.8	3.8	3.8	3.9	3.8	3.9	3.9	3.9	3.9	3.9	3.9
Std. Deviation	0.40	0.41	0.37	0.39	0.42	0.42	0.42	0.39	0.37	0.38	0.39	0.37
% Alb >= 4.0	39%	40%	30%	32%	51%	40%	45%	49%	55%	54%	58%	56%



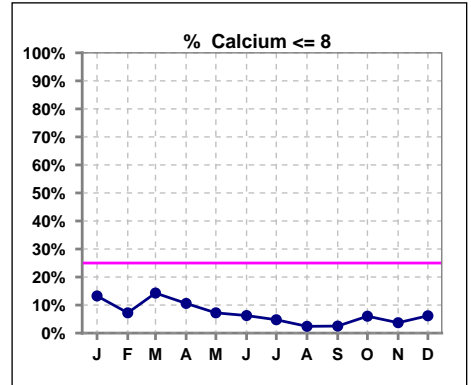
Lab methodology for PTH changed January 2012

**III. OSTEODYSTROPHY**

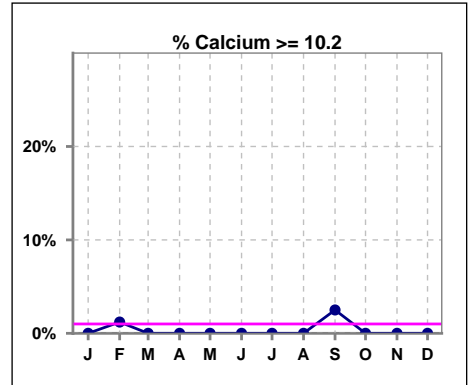
	Jan	Feb	Mar	Apr	May	Jun	Jul	Aug	Sep	Oct	Nov	Dec
# PO4	83	83	84	85	83	80	84	83	80	83	81	81
# PO4 3.5 to 5.5	33	29	30	37	31	26	30	36	33	26	28	34
Pop. Mean	6.1	6.2	6.1	6.1	6.3	6.1	6.2	6.0	6.1	6.2	6.2	5.8
Std. Deviation	1.95	2.23	2.09	2.07	2.06	1.83	2.18	1.97	1.92	2.04	2.12	2.01
% PO4 3.5 to 5.5	40%	35%	36%	44%	37%	33%	36%	43%	41%	31%	35%	42%



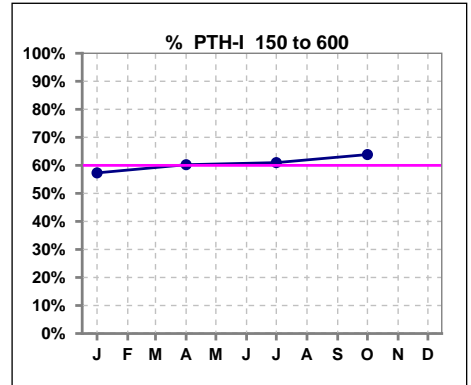
	Jan	Feb	Mar	Apr	May	Jun	Jul	Aug	Sep	Oct	Nov	Dec
# Calcium	83	83	84	85	83	80	84	83	80	83	81	81
# Calcium <= 8	11	6	12	9	6	5	4	2	2	5	3	5
Pop. Mean	8.9	9.1	9.0	9.0	9.2	9.1	9.1	9.3	9.3	9.2	9.3	9.1
Std. Deviation	0.75	0.80	0.82	0.70	0.69	0.71	0.61	0.57	0.58	0.60	0.60	0.61
% Calcium <= 8	13%	7%	14%	11%	7%	6%	5%	2%	3%	6%	4%	6%



	Jan	Feb	Mar	Apr	May	Jun	Jul	Aug	Sep	Oct	Nov	Dec
# Calcium	83	83	84	85	83	80	84	83	80	83	81	81
# Calcium >= 10.2	0	1	0	0	0	0	0	0	2	0	0	0
Pop. Mean	8.9	9.1	9.0	9.0	9.2	9.1	9.1	9.3	9.3	9.2	9.3	9.1
Std. Deviation	0.75	0.80	0.82	0.70	0.69	0.71	0.61	0.57	0.58	0.60	0.60	0.61
% Calcium >= 10.2	0%	1%	0%	0%	0%	0%	0%	0%	3%	0%	0%	0%



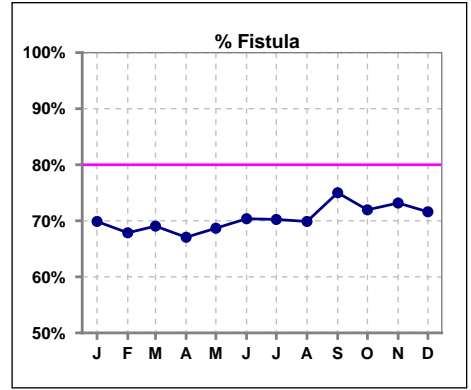
	Jan	Feb	Mar	Apr	May	Jun	Jul	Aug	Sep	Oct	Nov	Dec
# PTH-I	82			83			82			83		
# PTH-I 150 to 600	47			50			50			53		
Pop. Mean	633			504			541			507		
Std. Deviation	563			362			395			490		
% PTH-I 150 to 600	57%			60%			61%			64%		



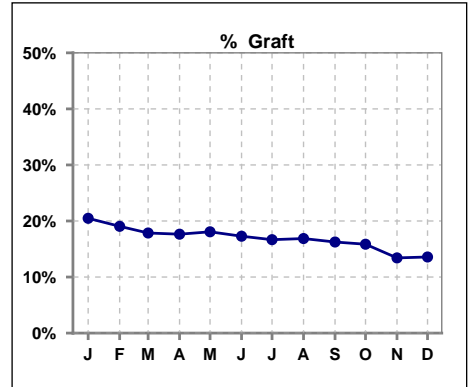
Methodology: a) All labs for 'Adequacy of Dialysis', 'Nutrition', 'Osteodystrophy', 'Anemia' and 'Diabetes' based on last value of month; b) BP's and #L processed are average of all values for month; c) Access data takes last access of month; d) Values for SGA and 'Infection Control' use most recent result.

**IV. ACCESS**

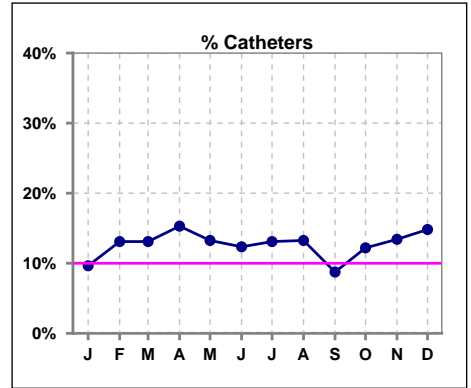
	Jan	Feb	Mar	Apr	May	Jun	Jul	Aug	Sep	Oct	Nov	Dec
# Access	83	84	84	85	83	81	84	83	80	82	82	81
# Fistula	58	57	58	57	57	57	59	58	60	59	60	58
% Fistula	70%	68%	69%	67%	69%	70%	70%	70%	75%	72%	73%	72%



	Jan	Feb	Mar	Apr	May	Jun	Jul	Aug	Sep	Oct	Nov	Dec
# Access	83	84	84	85	83	81	84	83	80	82	82	81
# Graft	17	16	15	15	15	14	14	14	13	13	11	11
% Graft	20%	19%	18%	18%	18%	17%	17%	17%	16%	16%	13%	14%



	Jan	Feb	Mar	Apr	May	Jun	Jul	Aug	Sep	Oct	Nov	Dec
# Access	83	84	84	85	83	81	84	83	80	82	82	81
# Catheters	8	11	11	13	11	10	11	11	7	10	11	12
% Catheters	10%	13%	13%	15%	13%	12%	13%	13%	9%	12%	13%	15%



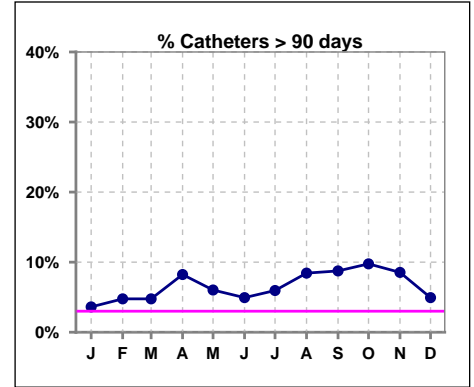
Methodology: a) All labs for 'Adequacy of Dialysis', 'Nutrition', 'Osteodystrophy', 'Anemia' and 'Diabetes' based on last value of month; b) BP's and #L processed are average of all values for month; c) Access data takes last access of month; d) Values for SGA and 'Infection Control' use most recent result.

**IV. ACCESS - CONT.**

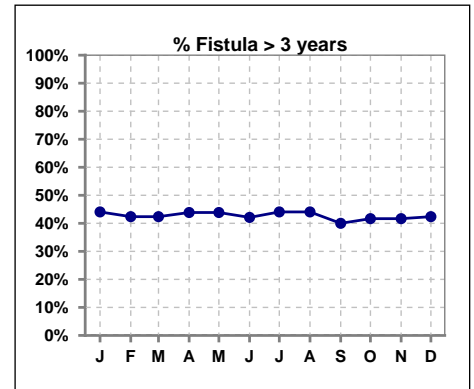
**Catheters > 90 days**

	Jan	Feb	Mar	Apr	May	Jun	Jul	Aug	Sep	Oct	Nov	Dec
<b># Access</b>	83	84	84	85	83	81	84	83	80	82	82	81
<b># Catheters</b>	3	4	4	7	5	4	5	7	7	8	7	4
<b>% Catheters</b>	4%	5%	5%	8%	6%	5%	6%	8%	9%	10%	9%	5%

**Definition:** Catheter in use on last treatment of the month



	Jan	Feb	Mar	Apr	May	Jun	Jul	Aug	Sep	Oct	Nov	Dec
<b># Fistula</b>	59	59	59	57	57	57	59	59	60	60	60	59
<b># Fistula &gt; 3 yrs</b>	26	25	25	25	25	24	26	26	24	25	25	25
<b>% Fistula &gt; 3 yrs</b>	44%	42%	42%	44%	44%	42%	44%	44%	40%	42%	42%	42%

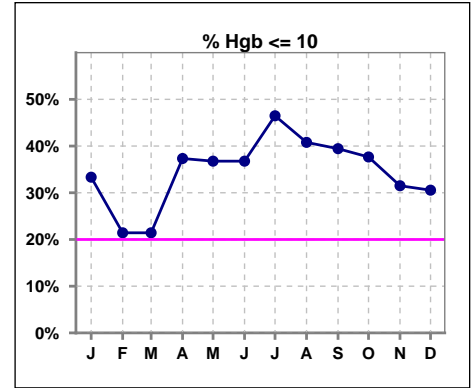


Methodology: a) All labs for 'Adequacy of Dialysis', 'Nutrition', 'Osteodystrophy', 'Anemia' and 'Diabetes' based on last value of month; b) BP's and #L processed are average of all values for month; c) Access data takes last access of month; d) Values for SGA and 'Infection Control' use most recent result.

**V. ANEMIA**

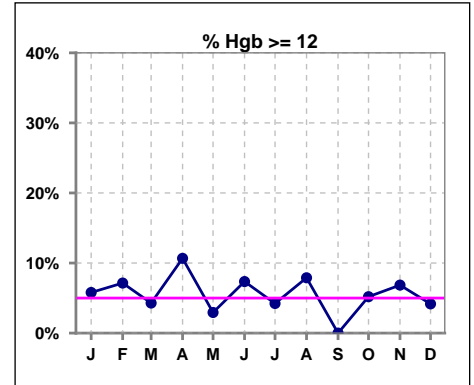
	Jan	Feb	Mar	Apr	May	Jun	Jul	Aug	Sep	Oct	Nov	Dec
# Hgb	69	70	70	75	68	68	71	76	71	77	73	72
# Hgb <= 10	23	15	15	28	25	25	33	31	28	29	23	22
Pop. Mean	10.4	10.7	10.6	10.4	10.2	10.3	10.0	10.2	10.1	10.3	10.5	10.4
Std. Deviation	1.1	1.3	1.2	1.4	1.1	1.2	1.2	1.3	1.2	1.1	1.0	1.2
<b>% Hgb &lt;= 10</b>	<b>33%</b>	<b>21%</b>	<b>21%</b>	<b>37%</b>	<b>37%</b>	<b>37%</b>	<b>46%</b>	<b>41%</b>	<b>39%</b>	<b>38%</b>	<b>32%</b>	<b>31%</b>

Note: Excludes patients who received no ESA in month.



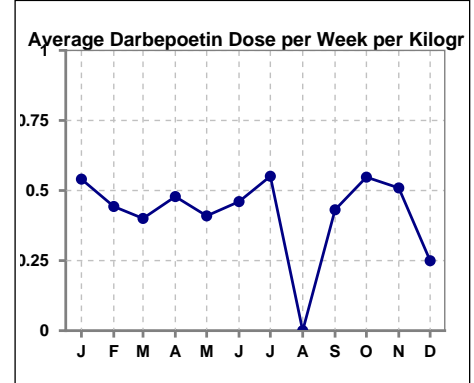
	Jan	Feb	Mar	Apr	May	Jun	Jul	Aug	Sep	Oct	Nov	Dec
# Hgb	69	70	70	75	68	68	71	76	71	77	73	72
# Hgb >= 12	4	5	3	8	2	5	3	6	0	4	5	3
Pop. Mean	10.4	10.7	10.6	10.4	10.2	10.3	10.0	10.2	10.1	10.3	10.5	10.4
Std. Deviation	1.1	1.3	1.2	1.4	1.1	1.2	1.2	1.3	1.2	1.1	1.0	1.2
<b>% Hgb &gt;= 12</b>	<b>6%</b>	<b>7%</b>	<b>4%</b>	<b>11%</b>	<b>3%</b>	<b>7%</b>	<b>4%</b>	<b>8%</b>	<b>0%</b>	<b>5%</b>	<b>7%</b>	<b>4%</b>

Note: Excludes patients who received no ESA in month.



**Average Darbepoetin Dose per Week per Kilogram**

	Jan	Feb	Mar	Apr	May	Jun	Jul	Aug	Sep	Oct	Nov	Dec
# Average Darbepoetin	.5	.4	.4	.5	.4	.5	.6	0	.4	.5	.5	.2

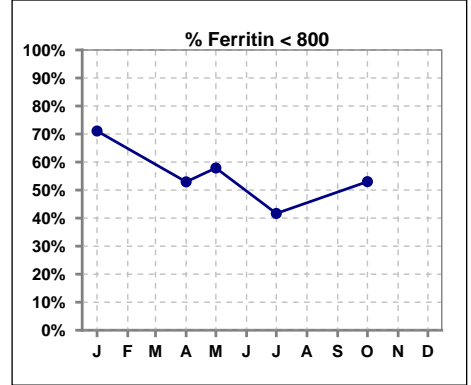




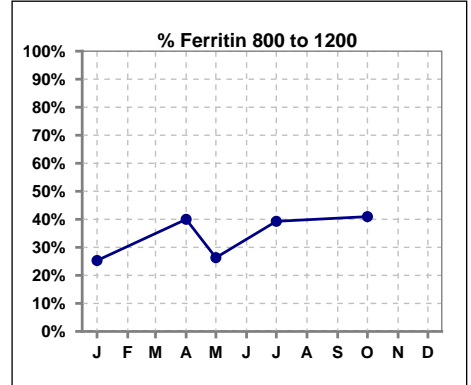
**V. ANEMIA - CONT.**

**Iron Profile**

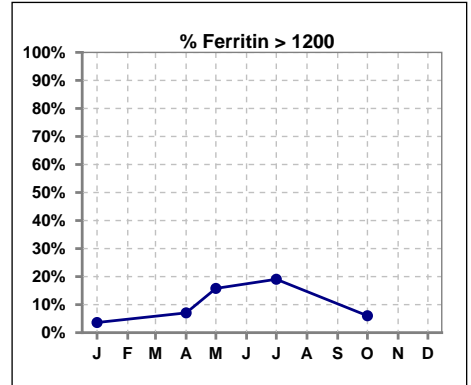
	Jan	Feb	Mar	Apr	May	Jun	Jul	Aug	Sep	Oct	Nov	Dec
# Ferritin	83			85	19		84			83		
# Ferritin < 800	59			45	11		35			44		
Pop. Mean	669			758	732		860			759		
Std. Deviation	309			357	390		398			314		
<b>% Ferritin &lt; 800</b>	<b>71%</b>			<b>53%</b>	<b>58%</b>		<b>42%</b>			<b>53%</b>		



	Jan	Feb	Mar	Apr	May	Jun	Jul	Aug	Sep	Oct	Nov	Dec
# Ferritin	83			85	19		84			83		
# Ferritin 800 to 1200	21			34	5		33			34		
Pop. Mean	669			758	732		860			759		
Std. Deviation	309			357	390		398			314		
<b>% Ferritin 800 to 1200</b>	<b>25%</b>			<b>40%</b>	<b>26%</b>		<b>39%</b>			<b>41%</b>		



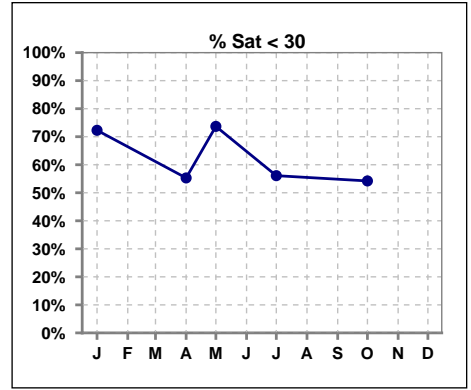
	Jan	Feb	Mar	Apr	May	Jun	Jul	Aug	Sep	Oct	Nov	Dec
# Ferritin	83			85	19		84			83		
# Ferritin > 1200	3			6	3		16			5		
Pop. Mean	669			758	732		860			759		
Std. Deviation	309			357	390		398			314		
<b>% Ferritin &gt; 1200</b>	<b>4%</b>			<b>7%</b>	<b>16%</b>		<b>19%</b>			<b>6%</b>		



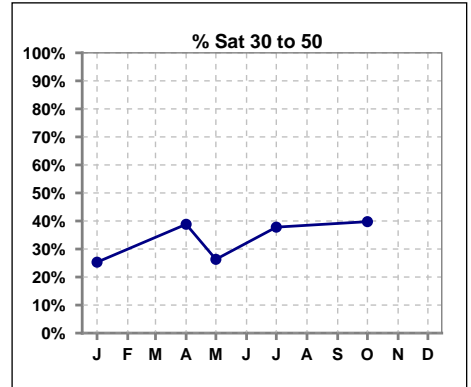
Methodology: a) All labs for 'Adequacy of Dialysis', 'Nutrition', 'Osteodystrophy', 'Anemia' and 'Diabetes' based on last value of month; b) BP's and #L processed are average of all values for month; c) Access data takes last access of month; d) Values for SGA and 'Infection Control' use most recent result.

**V. ANEMIA - CONT.**

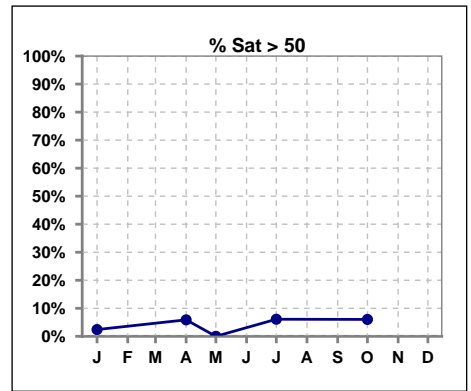
	Jan	Feb	Mar	Apr	May	Jun	Jul	Aug	Sep	Oct	Nov	Dec
# % Sat	83			85	19		82			83		
# % Sat < 30	60			47	14		46			45		
Pop. Mean	25			31	24		29			31		
Std. Deviation	10			14	10		16			13		
<b>% % Sat &lt; 30</b>	<b>72%</b>			<b>55%</b>	<b>74%</b>		<b>56%</b>			<b>54%</b>		



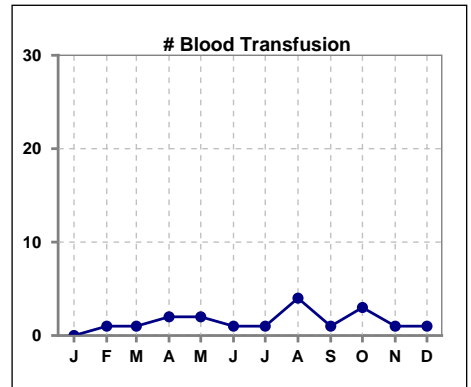
	Jan	Feb	Mar	Apr	May	Jun	Jul	Aug	Sep	Oct	Nov	Dec
# % Sat	83			85	19		82			83		
# % Sat 30 to 50	21			33	5		31			33		
Pop. Mean	25			31	24		29			31		
Std. Deviation	10			14	10		16			13		
<b>% % Sat 30 to 50</b>	<b>25%</b>			<b>39%</b>	<b>26%</b>		<b>38%</b>			<b>40%</b>		



	Jan	Feb	Mar	Apr	May	Jun	Jul	Aug	Sep	Oct	Nov	Dec
# % Sat	83			85	19		82			83		
# % Sat > 50	2			5	0		5			5		
Pop. Mean	25			31	24		29			31		
Std. Deviation	10			14	10		16			13		
<b>% % Sat &gt; 50</b>	<b>2%</b>			<b>6%</b>	<b>0%</b>		<b>6%</b>			<b>6%</b>		



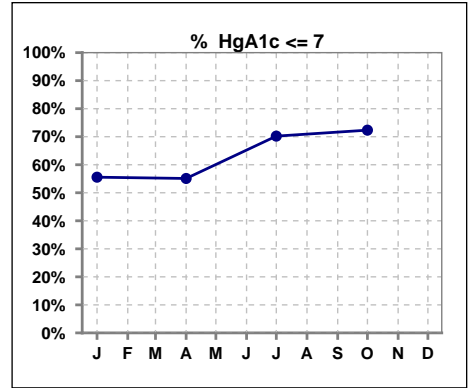
	Jan	Feb	Mar	Apr	May	Jun	Jul	Aug	Sep	Oct	Nov	Dec
# Patient	83	84	84	86	83	81	84	83	81	83	82	82
# Blood Transfusion	0	1	1	2	2	1	1	4	1	3	1	1



Methodology: a) All labs for 'Adequacy of Dialysis', 'Nutrition', 'Osteodystrophy', 'Anemia' and 'Diabetes' based on last value of month; b) BP's and #L processed are average of all values for month; c) Access data takes last access of month; d) Values for SGA and 'Infection Control' use most recent result.

**VI. Diabetes**

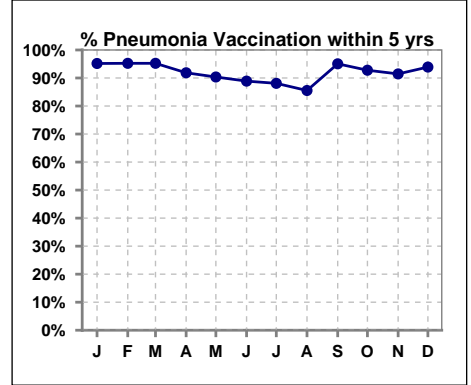
	Jan	Feb	Mar	Apr	May	Jun	Jul	Aug	Sep	Oct	Nov	Dec
# HgA1c	45			49			47			47		
# HgA1c <= 7	25			27			33			34		
Pop. Mean	7.1			7.1			6.8			6.7		
Std. Deviation	1.84			1.86			1.72			1.63		
<b>% HgA1c &lt;= 7</b>	<b>56%</b>			<b>55%</b>			<b>70%</b>			<b>72%</b>		



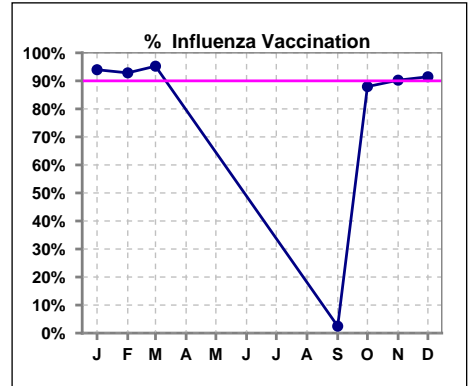
**VII. Infection Control**

**Pneumonia vaccination within the past five years**

	Jan	Feb	Mar	Apr	May	Jun	Jul	Aug	Sep	Oct	Nov	Dec
# Patient	83	84	84	86	83	81	84	83	81	83	82	82
# Pneumonia	79	80	80	79	75	72	74	71	77	77	75	77
<b>% Pneumonia</b>	<b>95%</b>	<b>95%</b>	<b>95%</b>	<b>92%</b>	<b>90%</b>	<b>89%</b>	<b>88%</b>	<b>86%</b>	<b>95%</b>	<b>93%</b>	<b>91%</b>	<b>94%</b>



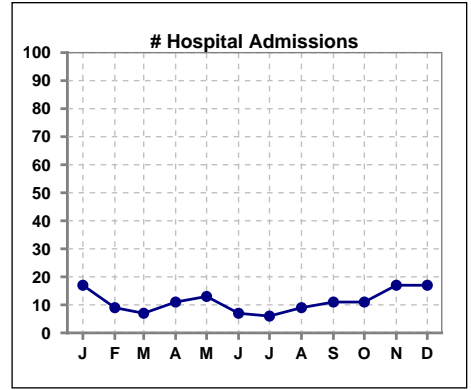
	Jan	Feb	Mar	Apr	May	Jun	Jul	Aug	Sep	Oct	Nov	Dec
# Patient	83	84	84						81	83	82	82
# Influenza	78	78	80						2	73	74	75
<b>% Influenza</b>	<b>94%</b>	<b>93%</b>	<b>95%</b>						<b>2%</b>	<b>88%</b>	<b>90%</b>	<b>91%</b>



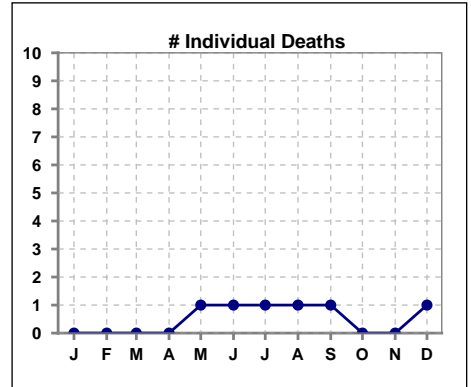
Methodology: a) All labs for 'Adequacy of Dialysis', 'Nutrition', 'Osteodystrophy', 'Anemia' and 'Diabetes' based on last value of month; b) BP's and #L processed are average of all values for month; c) Access data takes last access of month; d) Values for SGA and 'Infection Control' use most recent result.

**VIII. Outcome measures**

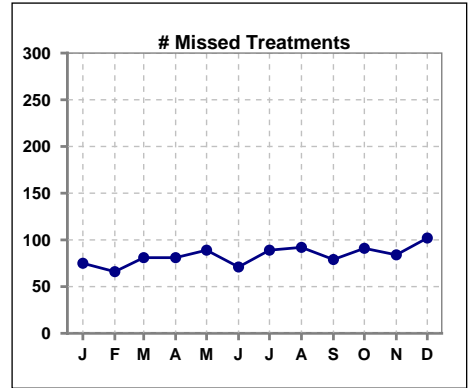
	Jan	Feb	Mar	Apr	May	Jun	Jul	Aug	Sep	Oct	Nov	Dec
<b># Patient</b>	83	84	84	86	83	81	84	83	81	83	82	82
<b># Hospital Admissions</b>	17	9	7	11	13	7	6	9	11	11	17	17



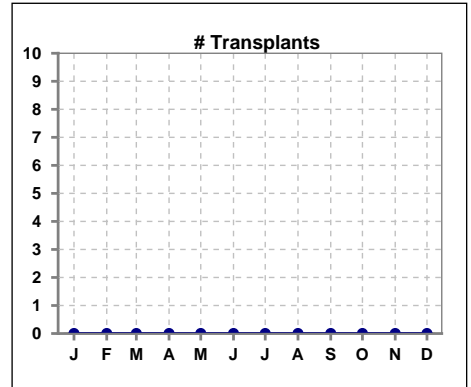
	Jan	Feb	Mar	Apr	May	Jun	Jul	Aug	Sep	Oct	Nov	Dec
<b># Patient</b>	83	84	84	86	83	81	84	83	81	83	82	82
<b># Individual Deaths</b>	0	0	0	0	1	1	1	1	1	0	0	1



	Jan	Feb	Mar	Apr	May	Jun	Jul	Aug	Sep	Oct	Nov	Dec
<b># Patient</b>	83	84	84	86	83	81	84	83	81	83	82	82
<b># Missed Treatments</b>	75	66	81	81	89	71	89	92	79	91	84	102



	Jan	Feb	Mar	Apr	May	Jun	Jul	Aug	Sep	Oct	Nov	Dec
<b># Patient</b>	83	84	84	86	83	81	84	83	81	83	82	82
<b># Transplants</b>	0	0	0	0	0	0	0	0	0	0	0	0



Methodology: a) All labs for 'Adequacy of Dialysis', 'Nutrition', 'Osteodystrophy', 'Anemia' and 'Diabetes' based on last value of month; b) BP's and #L processed are average of all values for month; c) Access data takes last access of month; d) Values for SGA and 'Infection Control' use most recent result.