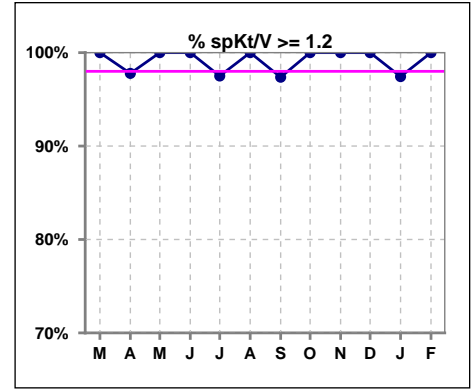
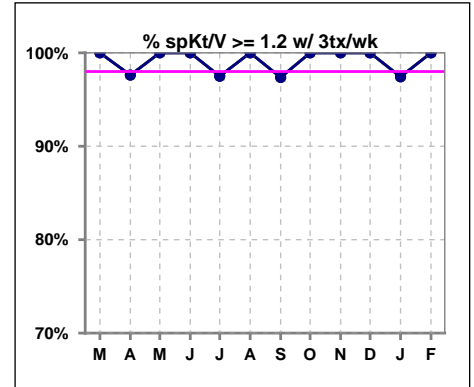


I. ADEQUACY OF DIALYSIS

	Mar	Apr	May	Jun	Jul	Aug	Sep	Oct	Nov	Dec	Jan	Feb
# spKt/V	41	45	45	41	40	38	38	41	41	40	39	43
# spKt/V >= 1.2	41	44	45	41	39	38	37	41	41	40	38	43
Pop. Mean	1.71	1.71	1.70	1.58	1.62	1.60	1.65	1.68	1.74	1.65	1.66	1.67
Std. Deviation	0.30	0.32	0.29	0.23	0.30	0.26	0.30	0.27	0.29	0.27	0.30	0.32
% spKt/V >= 1.2	100%	98%	100%	100%	98%	100%	97%	100%	100%	100%	97%	100%

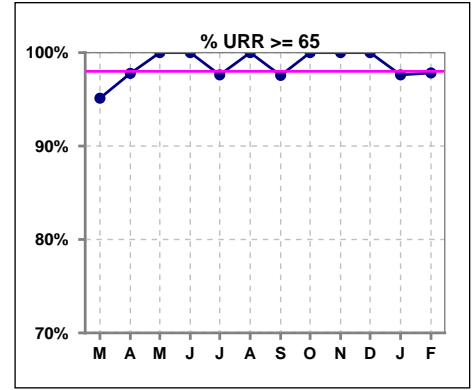


	Mar	Apr	May	Jun	Jul	Aug	Sep	Oct	Nov	Dec	Jan	Feb
# spKt/V w/ 3tx/wk	39	42	43	41	40	38	38	40	41	40	39	42
# spKt/V >= 1.2 w/3tx/wk	39	41	43	41	39	38	37	40	41	40	38	42
Pop. Mean	1.71	1.72	1.70	1.58	1.62	1.60	1.65	1.69	1.74	1.65	1.66	1.68
Std. Deviation	0.31	0.33	0.30	0.23	0.30	0.26	0.30	0.26	0.29	0.27	0.30	0.32
% >= 1.2 w/3tx/wk	100%	98%	100%	100%	98%	100%	97%	100%	100%	100%	97%	100%

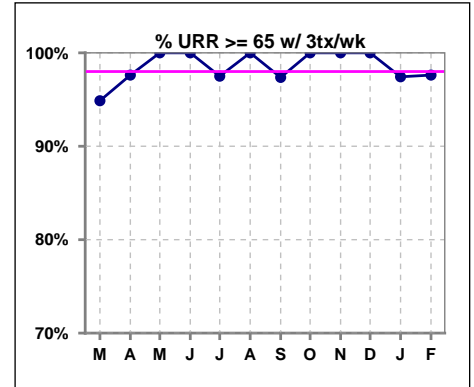


I. ADEQUACY OF DIALYSIS - CONT.

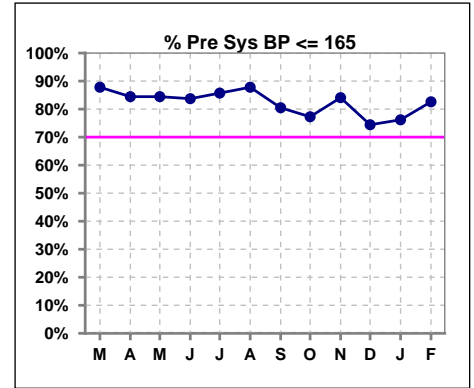
	Mar	Apr	May	Jun	Jul	Aug	Sep	Oct	Nov	Dec	Jan	Feb
# URR	41	45	45	43	42	41	41	44	44	43	42	46
# URR >= 65	39	44	45	43	41	41	40	44	44	43	41	45
Pop. Mean	77	76	77	75	76	75	76	76	77	76	76	76
Std. Deviation	5.95	5.83	5.30	4.75	5.33	4.74	5.51	4.55	4.83	4.94	5.87	5.88
% URR >= 65	95%	98%	100%	100%	98%	100%	98%	100%	100%	100%	98%	98%



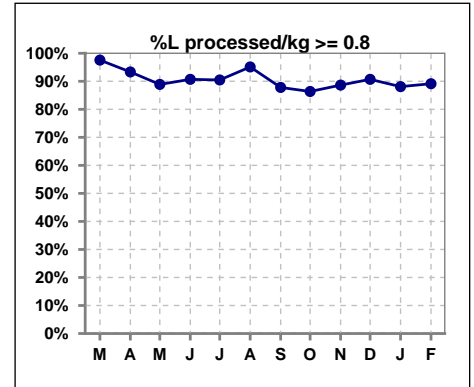
	Mar	Apr	May	Jun	Jul	Aug	Sep	Oct	Nov	Dec	Jan	Feb
# URR w/ 3tx/wk	39	42	43	41	40	38	38	40	41	40	39	42
# URR>=65 w/ 3tx/wk	37	41	43	41	39	38	37	40	41	40	38	41
Pop. Mean	77	77	77	75	76	75	76	77	77	76	76	76
Std. Deviation	6.08	6.00	5.39	4.85	5.45	4.83	5.59	4.57	4.92	5.00	5.84	6.00
% URR>=65 w/ 3tx/wk	95%	98%	100%	100%	98%	100%	97%	100%	100%	100%	97%	98%



	Mar	Apr	May	Jun	Jul	Aug	Sep	Oct	Nov	Dec	Jan	Feb
# Pre Sys BP	41	45	45	43	42	41	41	44	44	43	42	46
# Pre Sys BP <= 165	36	39	38	37	37	37	33	34	37	34	32	39
Pop. Mean	147	147	144	144	142	144	143	146	145	147	148	146
Std. Deviation	18.0	18.7	18.7	18.8	18.4	19.7	20.4	19.5	20.4	20.9	22.6	18.6
% Pre Sys BP <=165	88%	84%	84%	84%	86%	88%	80%	77%	84%	74%	76%	83%



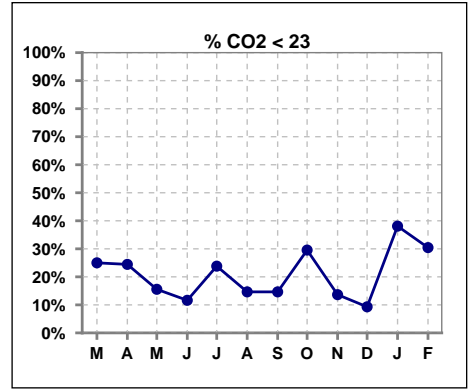
	Mar	Apr	May	Jun	Jul	Aug	Sep	Oct	Nov	Dec	Jan	Feb
# L processed/kg	41	45	45	43	42	41	41	44	44	43	42	46
# L processed/kg>=0.8	40	42	40	39	38	39	36	38	39	39	37	41
Pop. Mean	1	1	1	1	1	1	1	1	1	1	1	1
Std. Deviation	0.3	0.3	0.3	0.3	0.3	0.4	0.4	0.4	0.3	0.3	0.3	0.4
% L processed/kg>=0.8	98%	93%	89%	91%	90%	95%	88%	86%	89%	91%	88%	89%



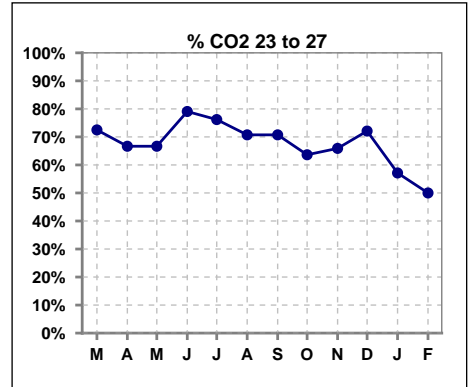
Methodology: a) All labs for 'Adequacy of Dialysis', 'Nutrition', 'Osteodystrophy', 'Anemia' and 'Diabetes' based on last value of month; b) BP's and #L processed are average of all values for month; c) Access data takes last access of month; d) Values for SGA and 'Infection Control' use most recent result.

I. ADEQUACY OF DIALYSIS - CONT.

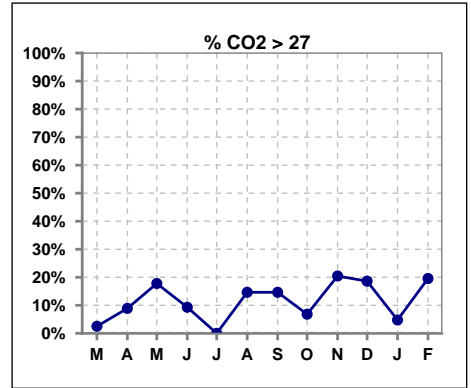
	Mar	Apr	May	Jun	Jul	Aug	Sep	Oct	Nov	Dec	Jan	Feb
# CO2	40	45	45	43	42	41	41	44	44	43	42	46
# CO2 < 23	10	11	7	5	10	6	6	13	6	4	16	14
Pop. Mean	24	24	25	25	24	25	25	23	26	25	23	24
Std. Deviation	2.23	2.21	2.59	2.70	2.88	2.81	2.82	3.14	2.94	3.02	2.48	3.67
% CO2 < 23	25%	24%	16%	12%	24%	15%	15%	30%	14%	9%	38%	30%



	Mar	Apr	May	Jun	Jul	Aug	Sep	Oct	Nov	Dec	Jan	Feb
# CO2	40	45	45	43	42	41	41	44	44	43	42	46
# CO2 23 to 27	29	30	30	34	32	29	29	28	29	31	24	23
Pop. Mean	24	24	25	25	24	25	25	23	26	25	23	24
Std. Deviation	2.23	2.21	2.59	2.70	2.88	2.81	2.82	3.14	2.94	3.02	2.48	3.67
% CO2 23 to 27	73%	67%	67%	79%	76%	71%	71%	64%	66%	72%	57%	50%



	Mar	Apr	May	Jun	Jul	Aug	Sep	Oct	Nov	Dec	Jan	Feb
# CO2	40	45	45	43	42	41	41	44	44	43	42	46
# CO2 > 27	1	4	8	4	0	6	6	3	9	8	2	9
Pop. Mean	24	24	25	25	24	25	25	23	26	25	23	24
Std. Deviation	2.23	2.21	2.59	2.70	2.88	2.81	2.82	3.14	2.94	3.02	2.48	3.67
% CO2 > 27	3%	9%	18%	9%	0%	15%	15%	7%	20%	19%	5%	20%

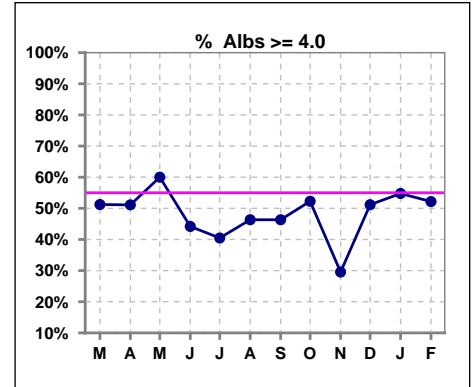


Methodology: a) All labs for 'Adequacy of Dialysis', 'Nutrition', 'Osteodystrophy', 'Anemia' and 'Diabetes' based on last value of month; b) BP's and #L processed are average of all values for month; c) Access data takes last access of month; d) Values for SGA and 'Infection Control' use most recent result.

*Albumin values use BCG method - as of July 2001

II. NUTRITION

	Mar	Apr	May	Jun	Jul	Aug	Sep	Oct	Nov	Dec	Jan	Feb
# Albumin	41	45	45	43	42	41	41	44	44	43	42	46
# Albumin >= 4.0	21	23	27	19	17	19	19	23	13	22	23	24
Pop. Mean	3.9	3.9	4.0	3.9	3.8	3.8	3.9	3.9	3.8	3.9	3.9	3.9
Std. Deviation	0.45	0.34	0.31	0.39	0.31	0.38	0.36	0.37	0.37	0.47	0.46	0.41
% Alb >= 4.0	51%	51%	60%	44%	40%	46%	46%	52%	30%	51%	55%	52%

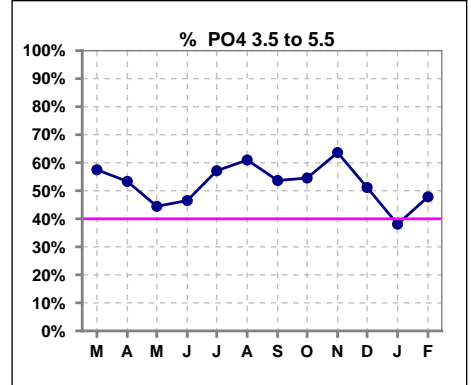


Methodology: a) All labs for 'Adequacy of Dialysis', 'Nutrition', 'Osteodystrophy', 'Anemia' and 'Diabetes' based on last value of month; b) BP's and #L processed are average of all values for month; c) Access data takes last access of month; d) Values for SGA and 'Infection Control' use most recent result.

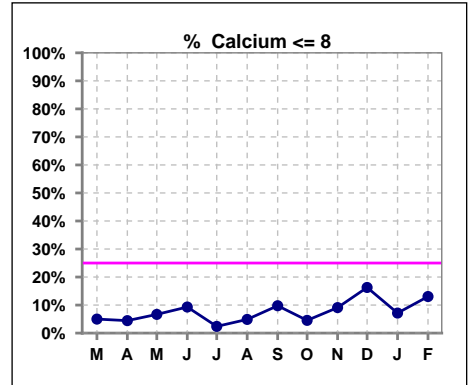
Lab methodology for PTH changed January 2012

III. OSTEODYSTROPHY

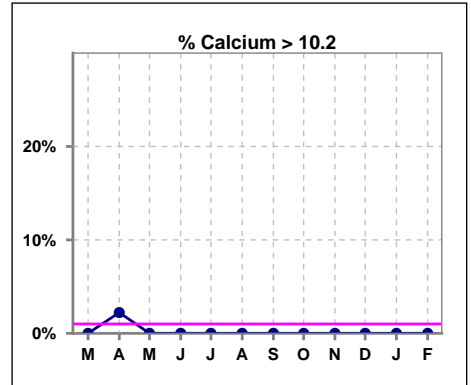
	Mar	Apr	May	Jun	Jul	Aug	Sep	Oct	Nov	Dec	Jan	Feb
# PO4	40	45	45	43	42	41	41	44	44	43	42	46
# PO4 3.5 to 5.5	23	24	20	20	24	25	22	24	28	22	16	22
Pop. Mean	5.4	5.5	5.5	5.6	5.6	5.3	5.2	5.3	5.2	5.5	5.8	5.7
Std. Deviation	1.73	1.09	1.57	1.50	1.46	1.31	1.60	1.47	1.45	1.36	1.85	2.07
% PO4 3.5 to 5.5	58%	53%	44%	47%	57%	61%	54%	55%	64%	51%	38%	48%



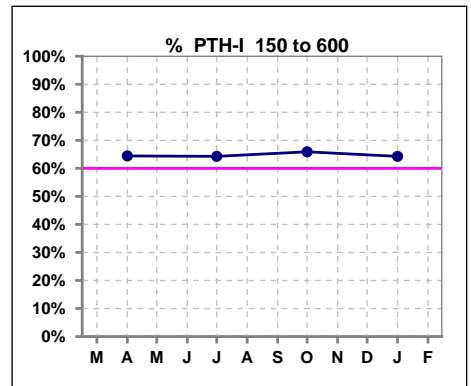
	Mar	Apr	May	Jun	Jul	Aug	Sep	Oct	Nov	Dec	Jan	Feb
# Calcium	40	45	45	43	42	41	41	44	44	43	42	46
# Calcium <= 8	2	2	3	4	1	2	4	2	4	7	3	6
Pop. Mean	9.1	9.2	9.2	9.0	9.0	8.9	8.9	8.9	8.8	8.8	8.9	8.9
Std. Deviation	0.62	0.64	0.57	0.59	0.52	0.50	0.60	0.52	0.62	0.67	0.67	0.66
% Calcium <= 8	5%	4%	7%	9%	2%	5%	10%	5%	9%	16%	7%	13%



	Mar	Apr	May	Jun	Jul	Aug	Sep	Oct	Nov	Dec	Jan	Feb
# Calcium	40	45	45	43	42	41	41	44	44	43	42	46
# Calcium > 10.2	0	1	0	0	0	0	0	0	0	0	0	0
Pop. Mean	9.1	9.2	9.2	9.0	9.0	8.9	8.9	8.9	8.8	8.8	8.9	8.9
Std. Deviation	0.62	0.64	0.57	0.59	0.52	0.50	0.60	0.52	0.62	0.67	0.67	0.66
% Calcium > 10.2	0%	2%	0%	0%	0%	0%	0%	0%	0%	0%	0%	0%



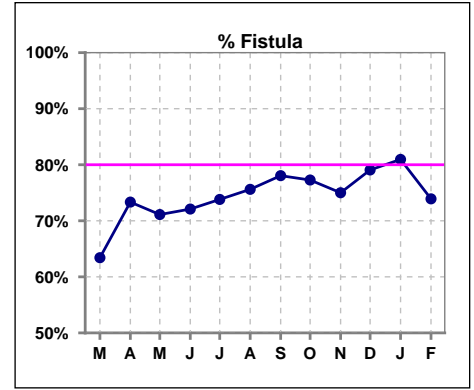
	Mar	Apr	May	Jun	Jul	Aug	Sep	Oct	Nov	Dec	Jan	Feb
# PTH-I		45			42			44			42	
# PTH-I 150 to 600		29			27			29			27	
Pop. Mean		419			429			462			444	
Std. Deviation		322			230			271			235	
% PTH-I 150 to 600		64%			64%			66%			64%	



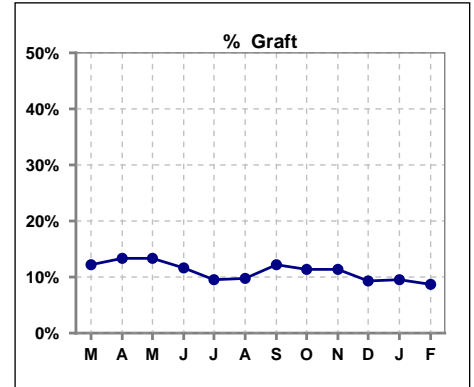
Methodology: a) All labs for 'Adequacy of Dialysis', 'Nutrition', 'Osteodystrophy', 'Anemia' and 'Diabetes' based on last value of month; b) BP's and #L processed are average of all values for month; c) Access data takes last access of month; d) Values for SGA and 'Infection Control' use most recent result.

IV. ACCESS

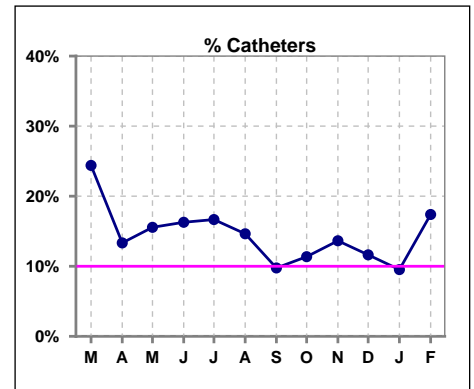
	Mar	Apr	May	Jun	Jul	Aug	Sep	Oct	Nov	Dec	Jan	Feb
# Access	41	45	45	43	42	41	41	44	44	43	42	46
# Fistula	26	33	32	31	31	31	32	34	33	34	34	34
% Fistula	63%	73%	71%	72%	74%	76%	78%	77%	75%	79%	81%	74%



	Mar	Apr	May	Jun	Jul	Aug	Sep	Oct	Nov	Dec	Jan	Feb
# Access	41	45	45	43	42	41	41	44	44	43	42	46
# Graft	5	6	6	5	4	4	5	5	5	4	4	4
% Graft	12%	13%	13%	12%	10%	10%	12%	11%	11%	9%	10%	9%



	Mar	Apr	May	Jun	Jul	Aug	Sep	Oct	Nov	Dec	Jan	Feb
# Access	41	45	45	43	42	41	41	44	44	43	42	46
# Catheters	10	6	7	7	7	6	4	5	6	5	4	8
% Catheters	24%	13%	16%	16%	17%	15%	10%	11%	14%	12%	10%	17%



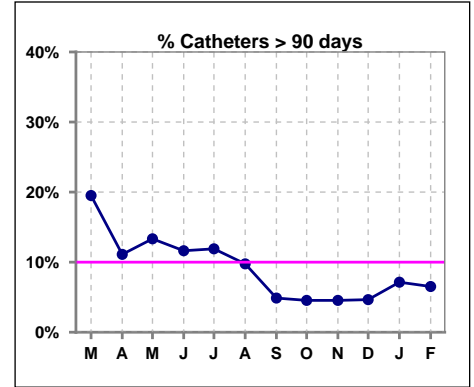
Methodology: a) All labs for 'Adequacy of Dialysis', 'Nutrition', 'Osteodystrophy', 'Anemia' and 'Diabetes' based on last value of month; b) BP's and #L processed are average of all values for month; c) Access data takes last access of month; d) Values for SGA and 'Infection Control' use most recent result.

IV. ACCESS - CONT.

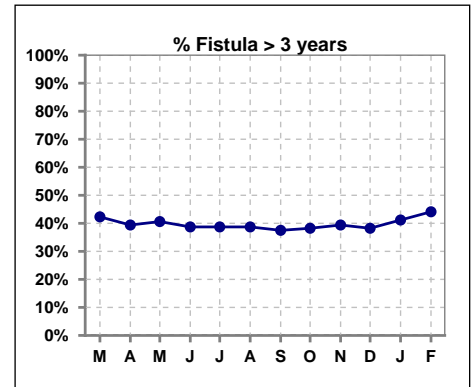
Catheters > 90 days

	Mar	Apr	May	Jun	Jul	Aug	Sep	Oct	Nov	Dec	Jan	Feb
# Access	41	45	45	43	42	41	41	44	44	43	42	46
# Catheters	8	5	6	5	5	4	2	2	2	2	3	3
% Catheters	20%	11%	13%	12%	12%	10%	5%	5%	5%	5%	7%	7%

Definition: Catheter in use on last treatment of the month



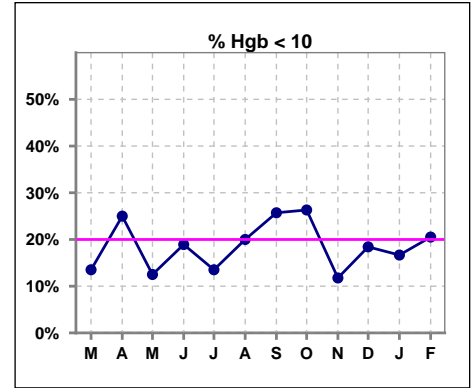
	Mar	Apr	May	Jun	Jul	Aug	Sep	Oct	Nov	Dec	Jan	Feb
# Fistula	26	33	32	31	31	31	32	34	33	34	34	34
# Fistula > 3 yrs	11	13	13	12	12	12	12	13	13	13	14	15
% Fistula > 3 yrs	42%	39%	41%	39%	39%	39%	38%	38%	39%	38%	41%	44%



V. ANEMIA

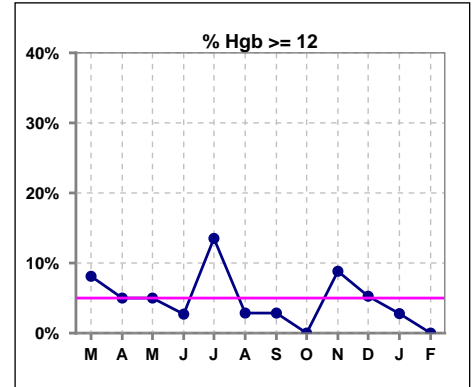
	Mar	Apr	May	Jun	Jul	Aug	Sep	Oct	Nov	Dec	Jan	Feb
# Hgb	37	40	40	37	37	35	35	38	34	38	36	39
# Hgb < 10	5	10	5	7	5	7	9	10	4	7	6	8
Pop. Mean	10.9	10.7	10.9	10.8	10.8	10.6	10.5	10.5	10.8	10.7	10.8	10.6
Std. Deviation	1.0	1.2	1.2	1.1	1.2	1.0	0.9	1.0	1.1	1.0	1.0	0.8
% Hgb < 10	14%	25%	13%	19%	14%	20%	26%	26%	12%	18%	17%	21%

Note: Excludes patients who received no ESA in month.



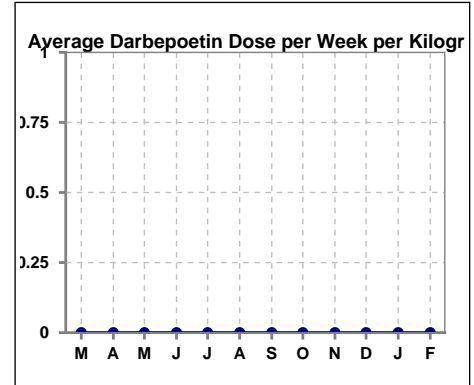
	Mar	Apr	May	Jun	Jul	Aug	Sep	Oct	Nov	Dec	Jan	Feb
# Hgb	37	40	40	37	37	35	35	38	34	38	36	39
# Hgb >= 12	3	2	2	1	5	1	1	0	3	2	1	0
Pop. Mean	10.9	10.7	10.9	10.8	10.8	10.6	10.5	10.5	10.8	10.7	10.8	10.6
Std. Deviation	1.0	1.2	1.2	1.1	1.2	1.0	0.9	1.0	1.1	1.0	1.0	0.8
% Hgb >= 12	8%	5%	5%	3%	14%	3%	3%	0%	9%	5%	3%	0%

Note: Excludes patients who received no ESA in month.



Average Darbepoetin Dose per Week per Kilogram

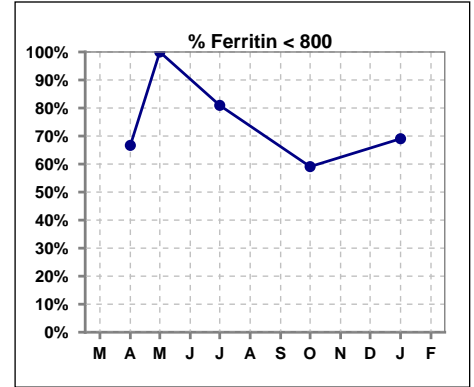
	Mar	Apr	May	Jun	Jul	Aug	Sep	Oct	Nov	Dec	Jan	Feb
# Average Darbepoetin	0	0	0	0	0	0	0	0	0	0	0	0



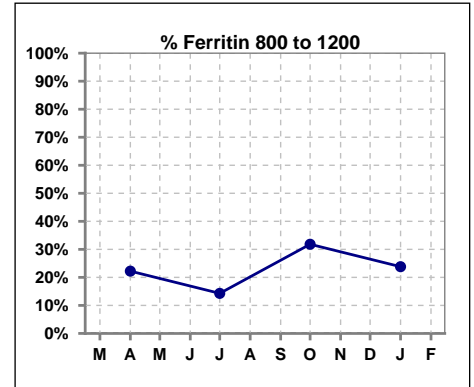
V. ANEMIA - CONT.

Iron Profile

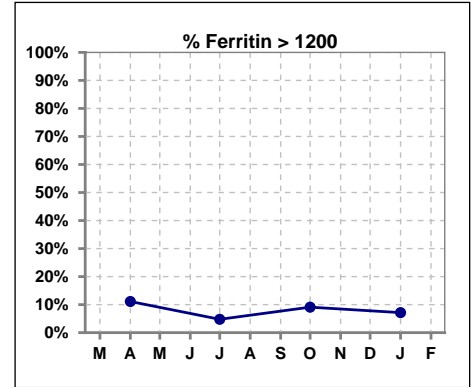
	Mar	Apr	May	Jun	Jul	Aug	Sep	Oct	Nov	Dec	Jan	Feb
# Ferritin		45	1		42			44			42	
# Ferritin < 800		30	1		34			26			29	
Pop. Mean		613	69		548			676			664	
Std. Deviation		401	0		348			431			437	
% Ferritin < 800		67%	100%		81%			59%			69%	



	Mar	Apr	May	Jun	Jul	Aug	Sep	Oct	Nov	Dec	Jan	Feb
# Ferritin		45	1		42			44			42	
# Ferritin 800 to 1200		10			6			14			10	
Pop. Mean		613	69		548			676			664	
Std. Deviation		401	0		348			431			437	
% Ferritin 800 to 1200		22%			14%			32%			24%	



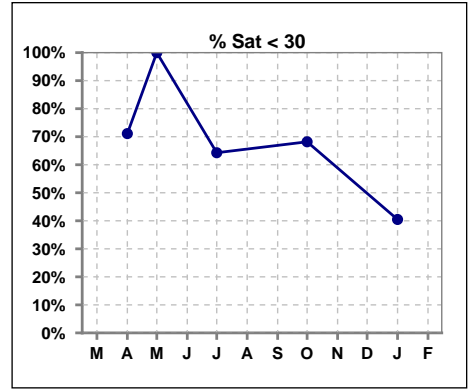
	Mar	Apr	May	Jun	Jul	Aug	Sep	Oct	Nov	Dec	Jan	Feb
# Ferritin		45	1		42			44			42	
# Ferritin > 1200		5			2			4			3	
Pop. Mean		613	69		548			676			664	
Std. Deviation		401	0		348			431			437	
% Ferritin > 1200		11%			5%			9%			7%	



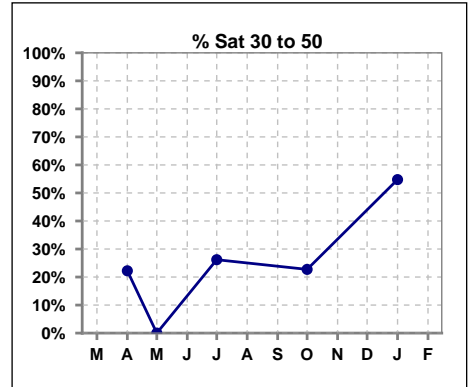
Methodology: a) All labs for 'Adequacy of Dialysis', 'Nutrition', 'Osteodystrophy', 'Anemia' and 'Diabetes' based on last value of month; b) BP's and #L processed are average of all values for month; c) Access data takes last access of month; d) Values for SGA and 'Infection Control' use most recent result.

V. ANEMIA - CONT.

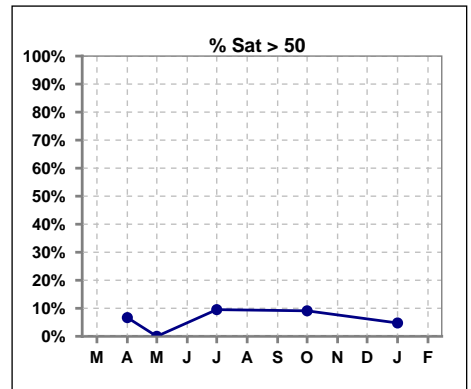
	Mar	Apr	May	Jun	Jul	Aug	Sep	Oct	Nov	Dec	Jan	Feb
# % Sat		45	1		42			44			42	
# % Sat < 30		32	1		27			30			17	
Pop. Mean		26	27		31			29			34	
Std. Deviation		12	0		18			14			14	
% % Sat < 30		71%	100%		64%			68%			40%	



	Mar	Apr	May	Jun	Jul	Aug	Sep	Oct	Nov	Dec	Jan	Feb
# % Sat		45	1		42			44			42	
# % Sat 30 to 50		10	0		11			10			23	
Pop. Mean		26	27		31			29			34	
Std. Deviation		12	0		18			14			14	
% % Sat 30 to 50		22%	0%		26%			23%			55%	

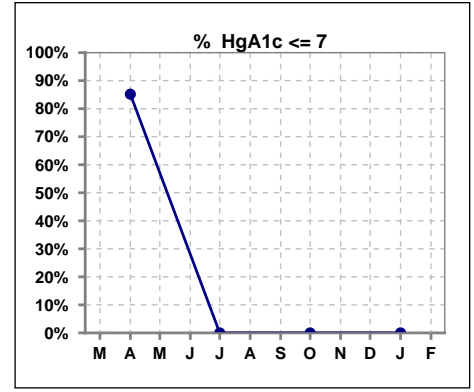


	Mar	Apr	May	Jun	Jul	Aug	Sep	Oct	Nov	Dec	Jan	Feb
# % Sat		45	1		42			44			42	
# % Sat > 50		3	0		4			4			2	
Pop. Mean		26	27		31			29			34	
Std. Deviation		12	0		18			14			14	
% % Sat > 50		7%	0%		10%			9%			5%	



VI. Diabetes

	Mar	Apr	May	Jun	Jul	Aug	Sep	Oct	Nov	Dec	Jan	Feb
# HgA1c		27			0			0			0	
# HgA1c <= 7		23			0			0			0	
Pop. Mean		6.2			0			0			0	
Std. Deviation		1.33			0			0			0	
% HgA1c <= 7		85%			0%			0%			0%	

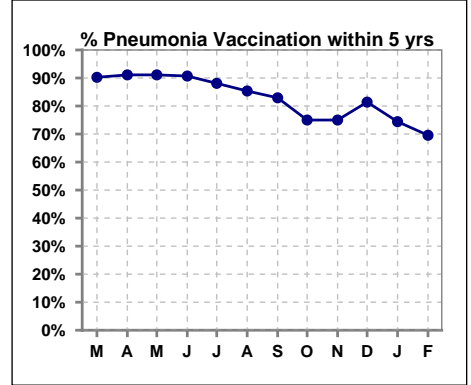


Methodology: a) All labs for 'Adequacy of Dialysis', 'Nutrition', 'Osteodystrophy', 'Anemia' and 'Diabetes' based on last value of month; b) BP's and #L processed are average of all values for month; c) Access data takes last access of month; d) Values for SGA and 'Infection Control' use most recent result.

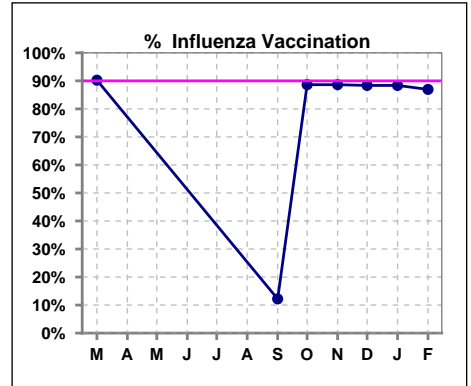
VII. Infection Control

Pneumonia vaccination within the past five years

	Mar	Apr	May	Jun	Jul	Aug	Sep	Oct	Nov	Dec	Jan	Feb
# Patient	41	45	45	43	42	41	41	44	44	43	43	46
# Pneumonia	37	41	41	39	37	35	34	33	33	35	32	32
% Pneumonia	90%	91%	91%	91%	88%	85%	83%	75%	75%	81%	74%	70%



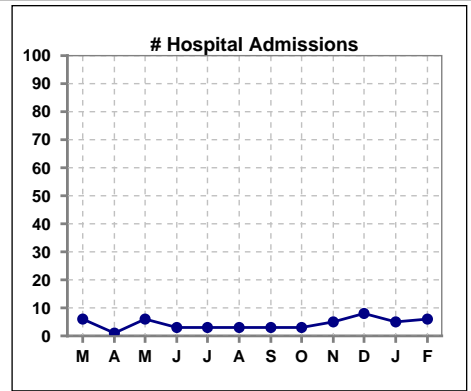
	Mar	Apr	May	Jun	Jul	Aug	Sep	Oct	Nov	Dec	Jan	Feb
# Patient	41						41	44	44	43	43	46
# Influenza	37						5	39	39	38	38	40
% Influenza	90%						12%	89%	89%	88%	88%	87%



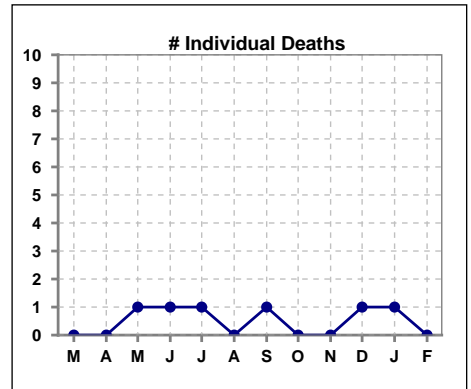
Methodology: a) All labs for 'Adequacy of Dialysis', 'Nutrition', 'Osteodystrophy', 'Anemia' and 'Diabetes' based on last value of month; b) BP's and #L processed are average of all values for month; c) Access data takes last access of month; d) Values for SGA and 'Infection Control' use most recent result.

VIII. Outcome measures

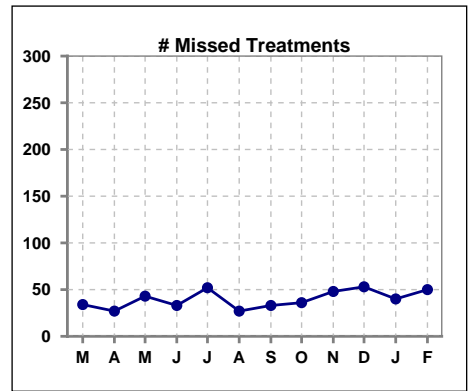
	Mar	Apr	May	Jun	Jul	Aug	Sep	Oct	Nov	Dec	Jan	Feb
# Patient	41	45	45	43	42	41	41	44	44	43	43	46
# Hospital Admissions	6	1	6	3	3	3	3	3	5	8	5	6



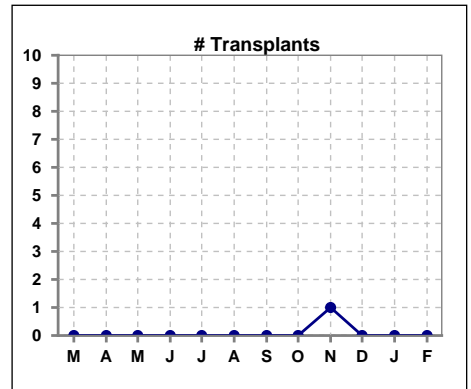
	Mar	Apr	May	Jun	Jul	Aug	Sep	Oct	Nov	Dec	Jan	Feb
# Patient	41	45	45	43	42	41	41	44	44	43	43	46
# Individual Deaths	0	0	1	1	1	0	1	0	0	1	1	0



	Mar	Apr	May	Jun	Jul	Aug	Sep	Oct	Nov	Dec	Jan	Feb
# Patient	41	45	45	43	42	41	41	44	44	43	43	46
# Missed Treatments	34	27	43	33	52	27	33	36	48	53	40	50



	Mar	Apr	May	Jun	Jul	Aug	Sep	Oct	Nov	Dec	Jan	Feb
# Patient	41	45	45	43	42	41	41	44	44	43	43	46
# Transplants	0	0	0	0	0	0	0	0	1	0	0	0



Methodology: a) All labs for 'Adequacy of Dialysis', 'Nutrition', 'Osteodystrophy', 'Anemia' and 'Diabetes' based on last value of month; b) BP's and #L processed are average of all values for month; c) Access data takes last access of month; d) Values for SGA and 'Infection Control' use most recent result.