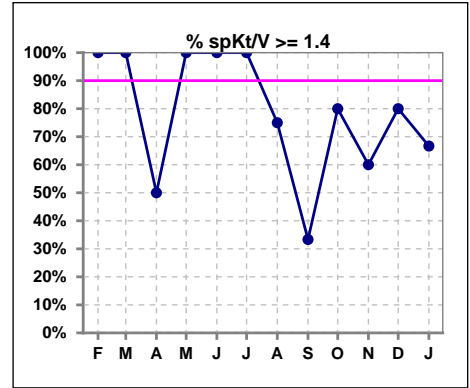


Federal Way West Kidney Center - Center Hemodialysis
Quality Assurance Reports (Patients in first 90 days of treatment)
 Through period ending Jan. 31, 2026

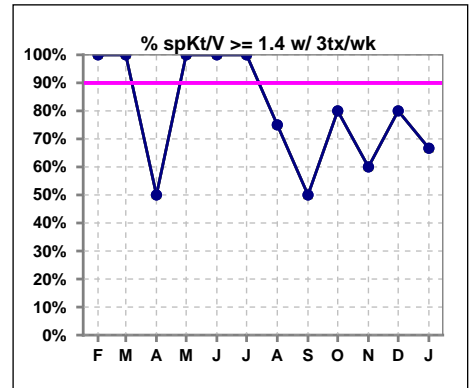
1

I. ADEQUACY OF DIALYSIS

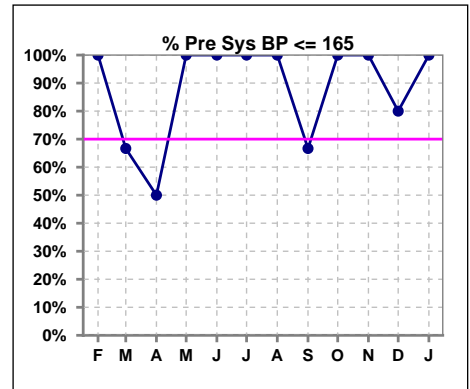
	Feb	Mar	Apr	May	Jun	Jul	Aug	Sep	Oct	Nov	Dec	Jan
# spKt/V	2	3	2	1	2	3	4	3	5	5	5	3
# spKt/V >= 1.4	2	3	1	1	2	3	3	1	4	3	4	2
Pop. Mean	1.82	1.57	1.54	1.54	1.59	1.91	1.52	1.38	1.41	1.60	1.62	1.67
Std. Deviation	0.06	0.16	0.27	0	0.16	0.42	0.56	0.15	0.28	0.26	0.23	0.50
% spKt/V >= 1.4	100%	100%	50%	100%	100%	100%	75%	33%	80%	60%	80%	67%
% spKt/V >= 1.2	100%	100%	100%	100%	100%	100%	75%	100%	80%	100%	100%	100%



	Feb	Mar	Apr	May	Jun	Jul	Aug	Sep	Oct	Nov	Dec	Jan
# spKt/V w/ 3tx/wk	2	3	2	1	2	3	4	2	5	5	5	3
# spKt/V>=1.4 w/3tx/wk	2	3	1	1	2	3	3	1	4	3	4	2
Pop. Mean	1.82	1.57	1.54	1.54	1.59	1.91	1.52	1.46	1.41	1.60	1.62	1.67
Std. Deviation	0.06	0.16	0.27	0	0.16	0.42	0.56	0.09	0.28	0.26	0.23	0.50
% spKt/V>=1.4 w/3tx/wk	100%	100%	50%	100%	100%	100%	75%	50%	80%	60%	80%	67%



	Feb	Mar	Apr	May	Jun	Jul	Aug	Sep	Oct	Nov	Dec	Jan
# Pre Sys BP	2	3	2	1	2	3	4	3	5	5	5	3
# Pre Sys BP <= 165	2	2	1	1	2	3	4	2	5	5	5	3
Pop. Mean	139	155	147	138	139	126	143	155	153	142	139	118
Std. Deviation	2.8	18.6	29.0	0	10.6	3.2	8.6	17.1	9.0	10.0	16.8	11.0
%Pre Sys BP <=165	100%	67%	50%	100%	100%	100%	100%	67%	100%	100%	80%	100%



Methodology: a) All labs for 'Adequacy of Dialysis', 'Nutrition', 'Osteodystrophy', 'Anemia' and 'Diabetes' based on last value of month; b) BP's and #L processed are average of all values for month; c) Access data takes last access of month; d) Values for SGA and 'Infection Control' use most recent result.

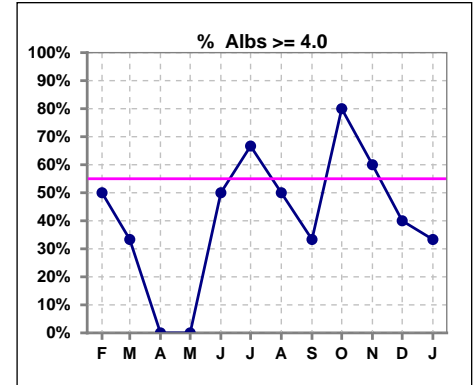
Federal Way West Kidney Center - Center Hemodialysis
Quality Assurance Reports (Patients in first 90 days of treatment)
 Through period ending Jan. 31, 2026

2

*Albumin values use BCG method - as of July 2001

II. NUTRITION

	Feb	Mar	Apr	May	Jun	Jul	Aug	Sep	Oct	Nov	Dec	Jan
# Albumin	2	3	2	1	2	3	4	3	5	5	5	3
# Albumin >= 4.0	1	1	0	0	1	2	2	1	4	3	2	1
Pop. Mean	4.0	3.8	3.7	3.3	4.1	3.9	3.9	4.0	4.1	4.1	3.8	3.8
Std. Deviation	0.28	0.20	0.14	0	0.49	0.31	0.46	0.36	0.25	0.46	0.36	0.58
% Alb >= 4.0	50%	33%	0%	0%	50%	67%	50%	33%	80%	60%	40%	33%

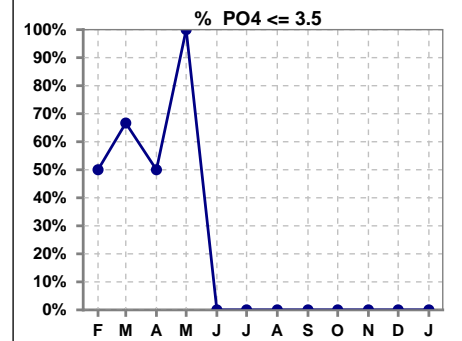


Methodology: a) All labs for 'Adequacy of Dialysis', 'Nutrition', 'Osteodystrophy', 'Anemia' and 'Diabetes' based on last value of month; b) BP's and #L processed are average of all values for month; c) Access data takes last access of month; d) Values for SGA and 'Infection Control' use most recent result.

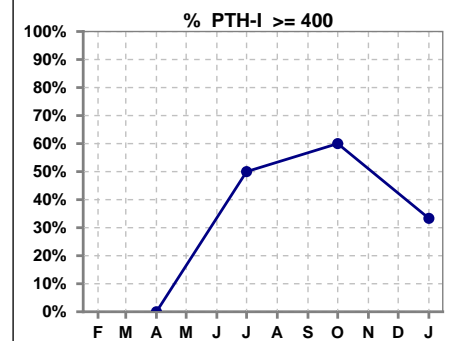
Lab methodology for PTH changed January 2012

III. OSTEODYSTROPHY

	Feb	Mar	Apr	May	Jun	Jul	Aug	Sep	Oct	Nov	Dec	Jan
# PO4	2	3	2	1	2	3	4	3	5	5	5	3
# PO4 <= 3.5	1	2	1	1	0	0	0	0	0	0	0	0
Pop. Mean	4.7	3.7	3.9	2.9	6.0	5.3	5.8	4.7	6.3	6.2	5.5	6.3
Std. Deviation	3.39	2.39	1.34	0	1.13	0.99	1.73	1.12	0.78	2.04	1.54	1.68
% PO4 <= 3.5	50%	67%	50%	100%	0%	0%	0%	0%	0%	0%	0%	0%



	Feb	Mar	Apr	May	Jun	Jul	Aug	Sep	Oct	Nov	Dec	Jan
# PTH-I			2			2			5			3
# PTH-I >= 400			0			1			3			1
Pop. Mean			187			365			459			308
Std. Deviation			19			54			367			153
% PTH-I >= 400			0%			50%			60%			33%

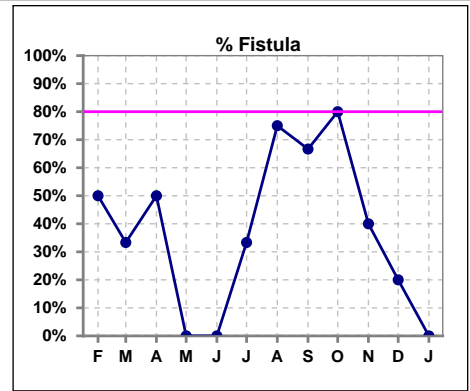


Federal Way West Kidney Center - Center Hemodialysis
Quality Assurance Reports (Patients in first 90 days of treatment)
 Through period ending Jan. 31, 2026

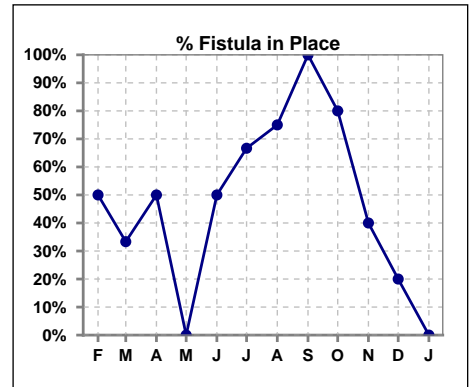
4

IV. ACCESS

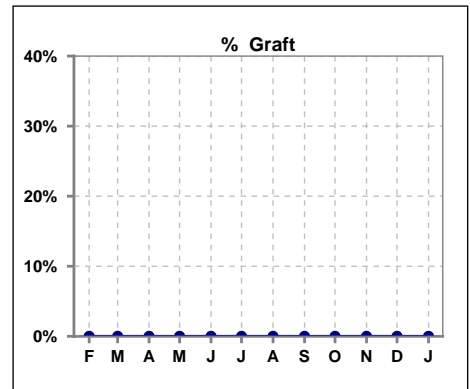
	Feb	Mar	Apr	May	Jun	Jul	Aug	Sep	Oct	Nov	Dec	Jan
# Access	2	3	2	1	2	3	4	3	5	5	5	3
# Fistula	1	1	1	0	0	1	3	2	4	2	1	0
% Fistula	50%	33%	50%	0%	0%	33%	75%	67%	80%	40%	20%	0%



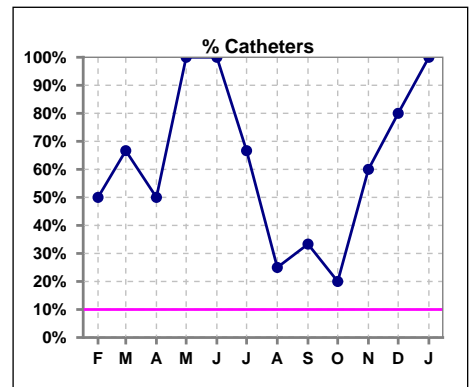
	Feb	Mar	Apr	May	Jun	Jul	Aug	Sep	Oct	Nov	Dec	Jan
# Patient	2	3	2	1	2	3	4	3	5	5	5	3
# Fistula in Place	1	1	1	0	1	2	3	3	4	2	1	0
% Fistula in Place	50%	33%	50%	0%	50%	67%	75%	100%	80%	40%	20%	0%



	Feb	Mar	Apr	May	Jun	Jul	Aug	Sep	Oct	Nov	Dec	Jan
# Access	2	3	2	1	2	3	4	3	5	5	5	3
# Graft	0	0	0	0	0	0	0	0	0	0	0	0
% Graft	0%	0%	0%	0%	0%	0%	0%	0%	0%	0%	0%	0%



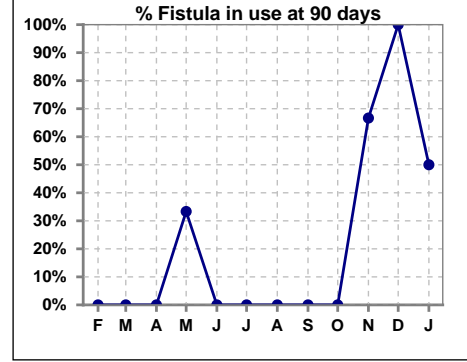
	Feb	Mar	Apr	May	Jun	Jul	Aug	Sep	Oct	Nov	Dec	Jan
# Access	2	3	2	1	2	3	4	3	5	5	5	3
# Catheters	1	2	1	1	2	2	1	1	1	3	4	3
% Catheters	50%	67%	50%	100%	100%	67%	25%	33%	20%	60%	80%	100%



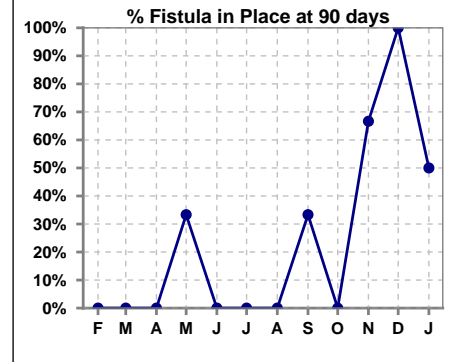
Methodology: a) All labs for 'Adequacy of Dialysis', 'Nutrition', 'Osteodystrophy', 'Anemia' and 'Diabetes' based on last value of month; b) BP's and #L processed are average of all values for month; c) Access data takes last access of month; d) Values for SGA and 'Infection Control' use most recent result.

IV. ACCESS - CONT. Access at 90 days for those patients that reached 90 days within the month.

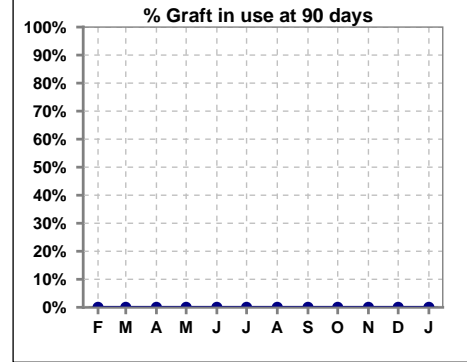
	Feb	Mar	Apr	May	Jun	Jul	Aug	Sep	Oct	Nov	Dec	Jan
# Patient	0	0	1	3	0	1	1	3	0	3	1	2
# Fistula in use	0	0	0	1	0	0	0	0	0	2	1	1
% Fistula in use	0%	0%	0%	33%	0%	0%	0%	0%	0%	67%	100%	50%



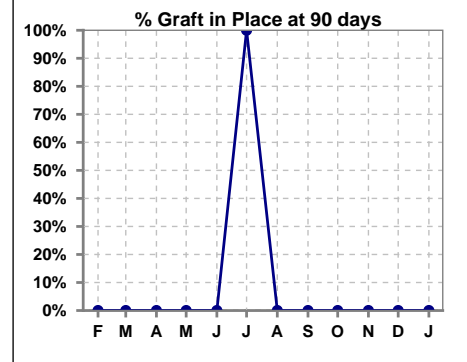
	Feb	Mar	Apr	May	Jun	Jul	Aug	Sep	Oct	Nov	Dec	Jan
# Patient	0	0	1	3	0	1	1	3	0	3	1	2
# Fistula in Place	0	0	0	1	0	0	0	1	0	2	1	1
% Fistula in Place	0%	0%	0%	33%	0%	0%	0%	33%	0%	67%	100%	50%



	Feb	Mar	Apr	May	Jun	Jul	Aug	Sep	Oct	Nov	Dec	Jan
# Patient	0	0	1	3	0	1	1	3	0	3	1	2
# Graft in use	0	0	0	0	0	0	0	0	0	0	0	0
% Graft in use	0%	0%	0%	0%	0%	0%	0%	0%	0%	0%	0%	0%

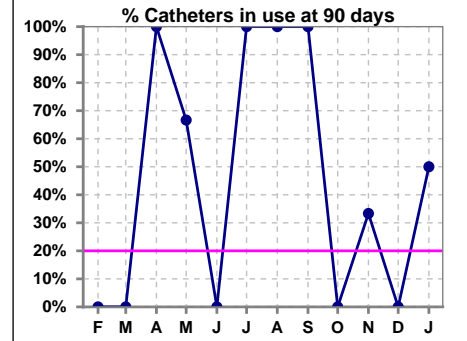


	Feb	Mar	Apr	May	Jun	Jul	Aug	Sep	Oct	Nov	Dec	Jan
# Patient	0	0	1	3	0	1	1	3	0	3	1	2
# Graft in Place	0	0	0	0	0	1	0	0	0	0	0	0
% Graft in Place	0%	0%	0%	0%	0%	100%	0%	0%	0%	0%	0%	0%

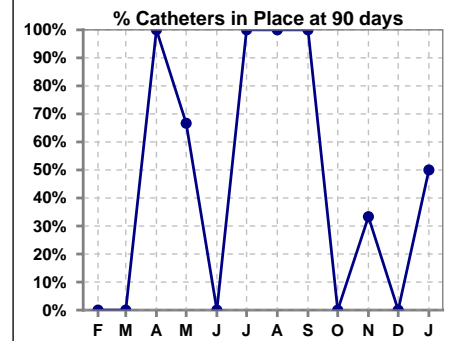


IV. ACCESS - CONT. Access at 90 days for those patients that reached 90 days within the month.

	Feb	Mar	Apr	May	Jun	Jul	Aug	Sep	Oct	Nov	Dec	Jan
# Patient	0	0	1	3	0	1	1	3	0	3	1	2
# Catheters in use	0	0	1	2	0	1	1	3	0	1	0	1
% Catheters in use	0%	0%	100%	67%	0%	100%	100%	100%	0%	33%	0%	50%



	Feb	Mar	Apr	May	Jun	Jul	Aug	Sep	Oct	Nov	Dec	Jan
# Patient	0	0	1	3	0	1	1	3	0	3	1	2
# Catheters in Place	0	0	1	2	0	1	1	3	0	1	0	1
% Catheters in Place	0%	0%	100%	67%	0%	100%	100%	100%	0%	33%	0%	50%

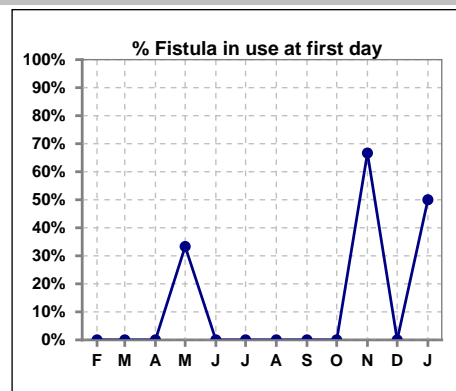


Federal Way West Kidney Center - Center Hemodialysis
Quality Assurance Reports (Patients in first 90 days of treatment)
 Through period ending Jan. 31, 2026

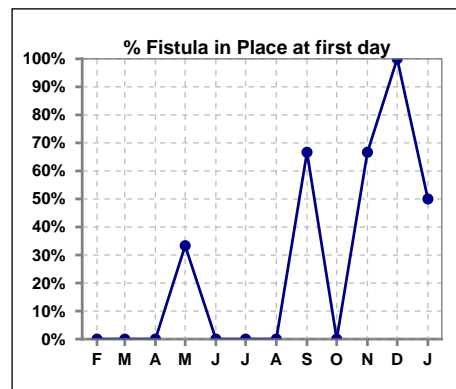
7

IV. ACCESS - CONT. Access at first day for those patients that reached 90 days within the month.

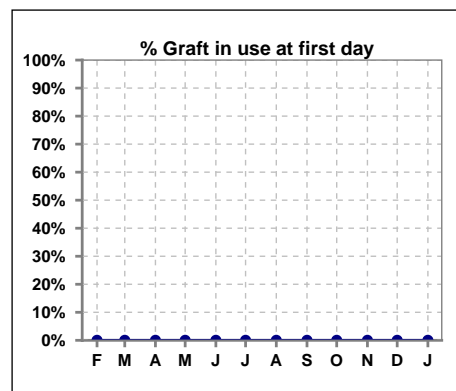
	Feb	Mar	Apr	May	Jun	Jul	Aug	Sep	Oct	Nov	Dec	Jan
# Patient	0	0	1	3	0	1	1	3	0	3	1	2
# Fistula in use	0	0	0	1	0	0	0	0	0	2	0	1
% Fistula in use	0%	0%	0%	33%	0%	0%	0%	0%	0%	67%	0%	50%



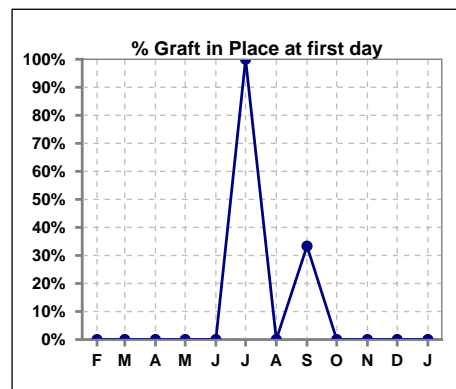
	Feb	Mar	Apr	May	Jun	Jul	Aug	Sep	Oct	Nov	Dec	Jan
# Patient	0	0	1	3	0	1	1	3	0	3	1	2
# Fistula in Place	0	0	0	1	0	0	0	2	0	2	1	1
% Fistula in Place	0%	0%	0%	33%	0%	0%	0%	67%	0%	67%	100%	50%



	Feb	Mar	Apr	May	Jun	Jul	Aug	Sep	Oct	Nov	Dec	Jan
# Patient	0	0	1	3	0	1	1	3	0	3	1	2
# Graft in use	0	0	0	0	0	0	0	0	0	0	0	0
% Graft in use	0%	0%	0%	0%	0%	0%	0%	0%	0%	0%	0%	0%



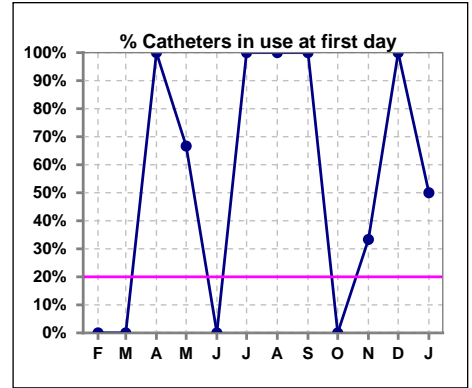
	Feb	Mar	Apr	May	Jun	Jul	Aug	Sep	Oct	Nov	Dec	Jan
# Patient	0	0	1	3	0	1	1	3	0	3	1	2
# Graft in Place	0	0	0	0	0	1	0	1	0	0	0	0
% Graft in Place	0%	0%	0%	0%	0%	100%	0%	33%	0%	0%	0%	0%



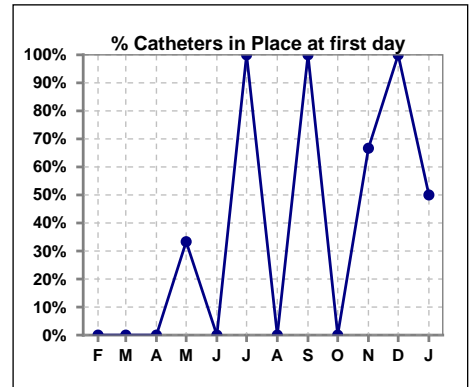
Methodology: a) All labs for 'Adequacy of Dialysis', 'Nutrition', 'Osteodystrophy', 'Anemia' and 'Diabetes' based on last value of month; b) BP's and #L processed are average of all values for month; c) Access data takes last access of month; d) Values for SGA and 'Infection Control' use most recent result.

IV. ACCESS - CONT. Access at first day for those patients that reached 90 days within the month.

	Feb	Mar	Apr	May	Jun	Jul	Aug	Sep	Oct	Nov	Dec	Jan
# Patient	0	0	1	3	0	1	1	3	0	3	1	2
# Catheters in use	0	0	1	2	0	1	1	3	0	1	1	1
% Catheters in use	0%	0%	100%	67%	0%	100%	100%	100%	0%	33%	100%	50%



	Feb	Mar	Apr	May	Jun	Jul	Aug	Sep	Oct	Nov	Dec	Jan
# Patient	0	0	1	3	0	1	1	3	0	3	1	2
# Catheters in Place	0	0	0	1	0	1	0	3	0	2	1	1
% Catheters in Place	0%	0%	0%	33%	0%	100%	0%	100%	0%	67%	100%	50%



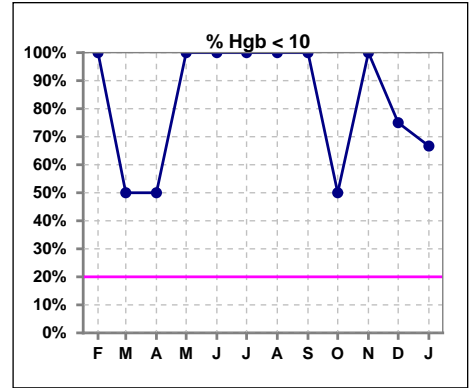
Federal Way West Kidney Center - Center Hemodialysis
Quality Assurance Reports (Patients in first 90 days of treatment)
Through period ending Jan. 31, 2026

9

V. ANEMIA

	Feb	Mar	Apr	May	Jun	Jul	Aug	Sep	Oct	Nov	Dec	Jan
# Hgb	1	2	2	1	2	2	4	1	2	3	4	3
# Hgb <= 10	1	1	1	1	2	2	4	1	1	3	3	2
Pop. Mean	9.4	9.7	9.6	8.6	8.5	8.6	8.7	9.5	8.8	9.2	10.4	10.2
Std. Deviation	0	1.3	3.7	0	1.0	2.1	1.2	0	2.1	0.6	1.5	1.2
% Hgb <= 10	100%	50%	50%	100%	100%	100%	100%	100%	50%	100%	75%	67%

Note: Excludes patients who received no ESA in month.



	Feb	Mar	Apr	May	Jun	Jul	Aug	Sep	Oct	Nov	Dec	Jan
# Hgb	1	2	2	1	2	2	4	1	2	3	4	3
# Hgb >= 12	0	0	1	0	0	0	0	0	0	0	1	0
Pop. Mean	9.4	9.7	9.6	8.6	8.5	8.6	8.7	9.5	8.8	9.2	10.4	10.2
Std. Deviation	0	1.3	3.7	0	1.0	2.1	1.2	0	2.1	0.6	1.5	1.2
% Hgb >= 12	0%	0%	50%	0%	0%	0%	0%	0%	0%	0%	25%	0%

Note: Excludes patients who received no ESA in month.

