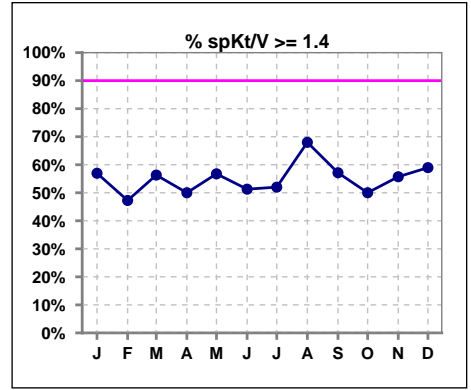
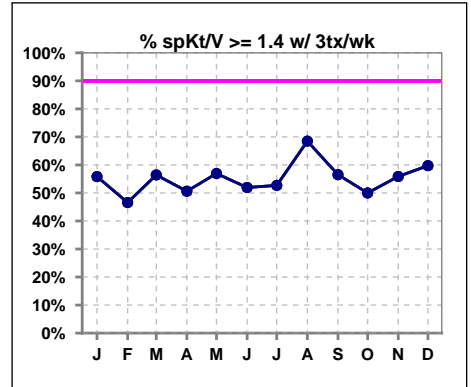


I. ADEQUACY OF DIALYSIS

	Jan	Feb	Mar	Apr	May	Jun	Jul	Aug	Sep	Oct	Nov	Dec
# spKt/V	79	91	103	82	74	78	75	75	70	68	70	78
# spKt/V >= 1.4	45	43	58	41	42	40	39	51	40	34	39	46
Pop. Mean	1.42	1.40	1.44	1.48	1.47	1.45	1.44	1.54	1.50	1.42	1.44	1.52
Std. Deviation	0.30	0.36	0.29	0.36	0.30	0.37	0.33	0.29	0.43	0.36	0.26	0.37
% spKt/V >= 1.4	57%	47%	56%	50%	57%	51%	52%	68%	57%	50%	56%	59%
% spKt/V >= 1.2	84%	79%	83%	88%	88%	87%	79%	96%	84%	84%	89%	88%

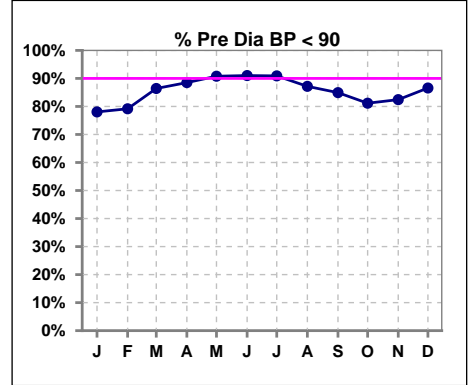


	Jan	Feb	Mar	Apr	May	Jun	Jul	Aug	Sep	Oct	Nov	Dec
# spKt/V w/ 3tx/wk	77	88	101	81	72	77	74	73	69	68	68	77
# spKt/V >= 1.4 w/3tx/wk	43	41	57	41	41	40	39	50	39	34	38	46
Pop. Mean	1.41	1.40	1.44	1.49	1.47	1.46	1.44	1.54	1.49	1.42	1.43	1.53
Std. Deviation	0.30	0.36	0.29	0.35	0.30	0.37	0.33	0.29	0.42	0.36	0.24	0.35
% spKt/V >= 1.4 w/3tx/wk	56%	47%	56%	51%	57%	52%	53%	68%	57%	50%	56%	60%

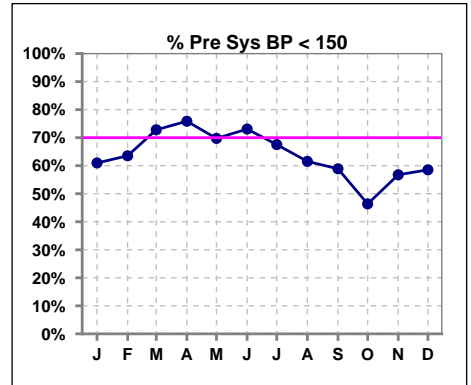


Blood Pressure Control (Pre)

	Jan	Feb	Mar	Apr	May	Jun	Jul	Aug	Sep	Oct	Nov	Dec
# Pre Dia BP	82	96	103	87	76	78	77	78	73	69	74	82
# Pre Dia BP < 90	64	76	89	77	69	71	70	68	62	56	61	71
Pop. Mean	78	78	77	76	76	74	73	75	78	80	79	78
Std. Deviation	13.7	13.0	12.3	10.6	10.5	10.5	11.2	11.5	13.1	12.4	10.1	10.5
% Pre Dia BP < 90	78%	79%	86%	89%	91%	91%	91%	87%	85%	81%	82%	87%



	Jan	Feb	Mar	Apr	May	Jun	Jul	Aug	Sep	Oct	Nov	Dec
# Pre Sys BP	82	96	103	87	76	78	77	78	73	69	74	82
# Pre Sys BP < 150	50	61	75	66	53	57	52	48	43	32	42	48
Pop. Mean	143	143	140	141	141	139	139	142	146	148	148	145
Std. Deviation	21.2	23.0	18.1	15.3	18.8	18.3	20.4	18.2	18.6	18.0	17.5	18.4
% Pre Sys BP < 150	61%	64%	73%	76%	70%	73%	68%	62%	59%	46%	57%	59%

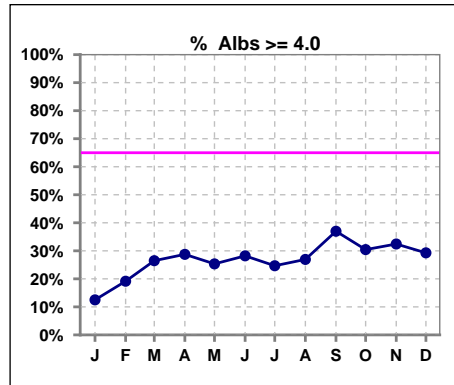


Methodology: a) All labs for 'Adequacy of Dialysis', 'Nutrition', 'Osteodystrophy', 'Anemia' and 'Diabetes' based on last value of month; b) BP's and #L processed are average of all values for month; c) Access data takes last access of month; d) Values for SGA and 'Infection Control' use most recent result.

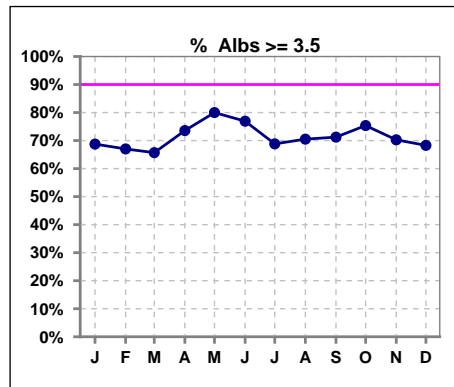
*Albumin values use BCG method - as of July 2001

II. NUTRITION

	Jan	Feb	Mar	Apr	May	Jun	Jul	Aug	Sep	Oct	Nov	Dec
# Albumin	80	94	102	87	75	78	77	78	73	69	74	82
# Albumin >= 4.0	10	18	27	25	19	22	19	21	27	21	24	24
Pop. Mean	3.6	3.6	3.6	3.7	3.7	3.7	3.7	3.7	3.7	3.7	3.7	3.6
Std. Deviation	0.47	0.44	0.50	0.42	0.42	0.38	0.44	0.49	0.50	0.42	0.47	0.51
% Alb >= 4.0	13%	19%	26%	29%	25%	28%	25%	27%	37%	30%	32%	29%



	Jan	Feb	Mar	Apr	May	Jun	Jul	Aug	Sep	Oct	Nov	Dec
# Albumin	80	94	102	87	75	78	77	78	73	69	74	82
# Albumin >= 3.5	55	63	67	64	60	60	53	55	52	52	52	56
Pop. Mean	3.6	3.6	3.6	3.7	3.7	3.7	3.7	3.7	3.7	3.7	3.7	3.6
Std. Deviation	0.47	0.44	0.50	0.42	0.42	0.38	0.44	0.49	0.50	0.42	0.47	0.51
% Alb >= 3.5	69%	67%	66%	74%	80%	77%	69%	71%	71%	75%	70%	68%

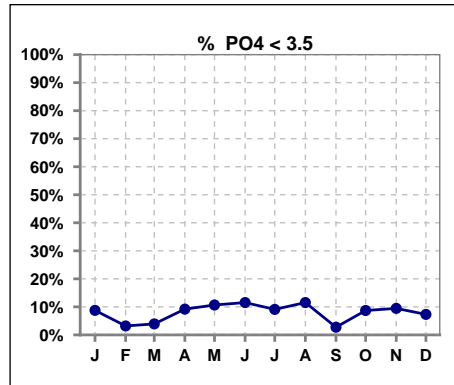


Methodology: a) All labs for 'Adequacy of Dialysis', 'Nutrition', 'Osteodystrophy', 'Anemia' and 'Diabetes' based on last value of month; b) BP's and #L processed are average of all values for month; c) Access data takes last access of month; d) Values for SGA and 'Infection Control' use most recent result.

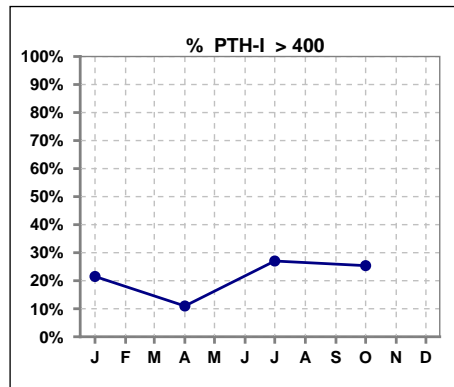
Lab methodology for PTH changed January 2012

III. OSTEODYSTROPHY

	Jan	Feb	Mar	Apr	May	Jun	Jul	Aug	Sep	Oct	Nov	Dec
# PO4	80	94	102	87	75	78	77	78	73	69	74	82
# PO4 < 3.5	7	3	4	8	8	9	7	9	2	6	7	6
Pop. Mean	5.7	5.9	5.7	5.5	5.3	5.4	5.5	5.4	5.7	5.9	5.5	5.6
Std. Deviation	1.69	1.68	1.62	1.74	1.55	1.74	1.75	1.74	1.92	2.45	1.81	1.85
% PO4 < 3.5	9%	3%	4%	9%	11%	12%	9%	12%	3%	9%	9%	7%



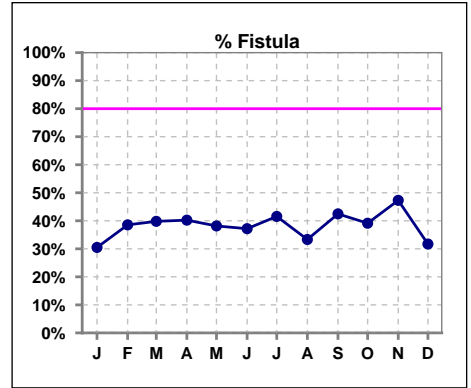
	Jan	Feb	Mar	Apr	May	Jun	Jul	Aug	Sep	Oct	Nov	Dec
# PTH-I	79			82			74			67		
# PTH-I > 400	17			9			20			17		
Pop. Mean	316			246			278			298		
Std. Deviation	338			282			243			268		
% PTH-I > 400	22%			11%			27%			25%		



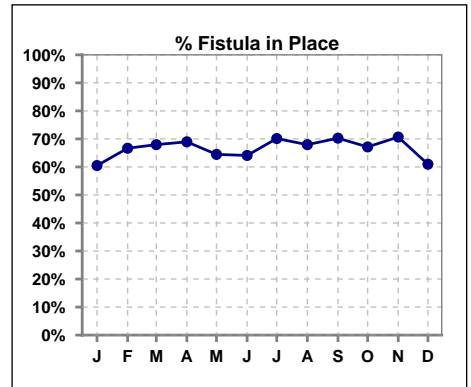
Methodology: a) All labs for 'Adequacy of Dialysis', 'Nutrition', 'Osteodystrophy', 'Anemia' and 'Diabetes' based on last value of month; b) BP's and #L processed are average of all values for month; c) Access data takes last access of month; d) Values for SGA and 'Infection Control' use most recent result.

IV. ACCESS

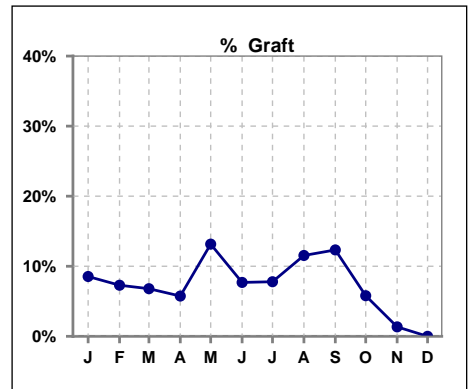
	Jan	Feb	Mar	Apr	May	Jun	Jul	Aug	Sep	Oct	Nov	Dec
# Access	82	96	102	87	76	78	77	78	73	69	74	82
# Fistula	25	37	41	35	29	29	32	26	31	27	35	26
% Fistula	30%	39%	40%	40%	38%	37%	42%	33%	42%	39%	47%	32%



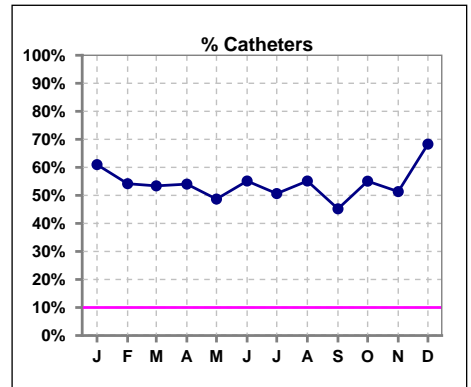
	Jan	Feb	Mar	Apr	May	Jun	Jul	Aug	Sep	Oct	Nov	Dec
# Patient	81	96	103	87	76	78	77	78	74	70	75	82
# Fistula in Place	49	64	70	60	49	50	54	53	52	47	53	50
% Fistula in Place	60%	67%	68%	69%	64%	64%	70%	68%	70%	67%	71%	61%



	Jan	Feb	Mar	Apr	May	Jun	Jul	Aug	Sep	Oct	Nov	Dec
# Access	82	96	102	87	76	78	77	78	73	69	74	82
# Graft	7	7	7	5	10	6	6	9	9	4	1	0
% Graft	9%	7%	7%	6%	13%	8%	8%	12%	12%	6%	1%	0%



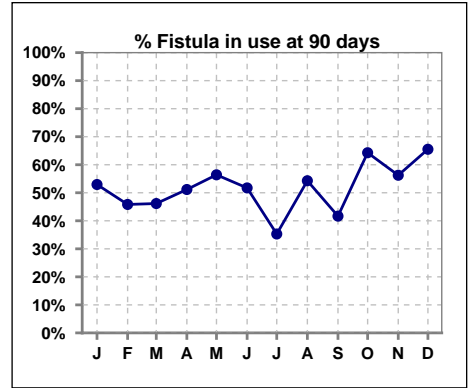
	Jan	Feb	Mar	Apr	May	Jun	Jul	Aug	Sep	Oct	Nov	Dec
# Access	82	96	102	87	76	78	77	78	73	69	74	82
# Catheters	50	52	55	47	37	43	39	43	33	38	38	56
% Catheters	61%	54%	53%	54%	49%	55%	51%	55%	45%	55%	51%	68%



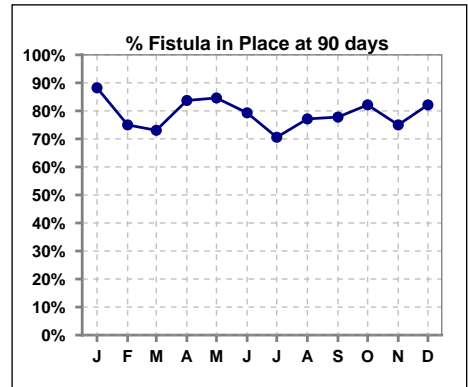
Methodology: a) All labs for 'Adequacy of Dialysis', 'Nutrition', 'Osteodystrophy', 'Anemia' and 'Diabetes' based on last value of month; b) BP's and #L processed are average of all values for month; c) Access data takes last access of month; d) Values for SGA and 'Infection Control' use most recent result.

IV. ACCESS - CONT. Access at 90 days for those patients that reached 90 days within the month.

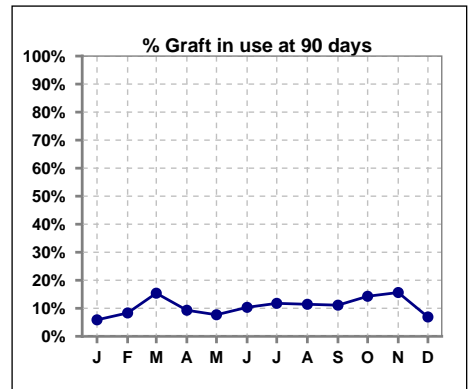
	Jan	Feb	Mar	Apr	May	Jun	Jul	Aug	Sep	Oct	Nov	Dec
# Patient	17	24	26	43	39	29	34	35	36	28	32	29
# Fistula in use	9	11	12	22	22	15	12	19	15	18	18	19
% Fistula in use	53%	46%	46%	51%	56%	52%	35%	54%	42%	64%	56%	66%



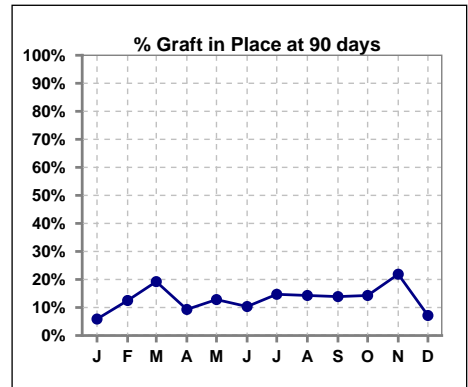
	Jan	Feb	Mar	Apr	May	Jun	Jul	Aug	Sep	Oct	Nov	Dec
# Patient	17	24	26	43	39	29	34	35	36	28	32	28
# Fistula in Place	15	18	19	36	33	23	24	27	28	23	24	23
% Fistula in Place	88%	75%	73%	84%	85%	79%	71%	77%	78%	82%	75%	82%



	Jan	Feb	Mar	Apr	May	Jun	Jul	Aug	Sep	Oct	Nov	Dec
# Patient	17	24	26	43	39	29	34	35	36	28	32	29
# Graft in use	1	2	4	4	3	3	4	4	4	4	5	2
% Graft in use	6%	8%	15%	9%	8%	10%	12%	11%	11%	14%	16%	7%



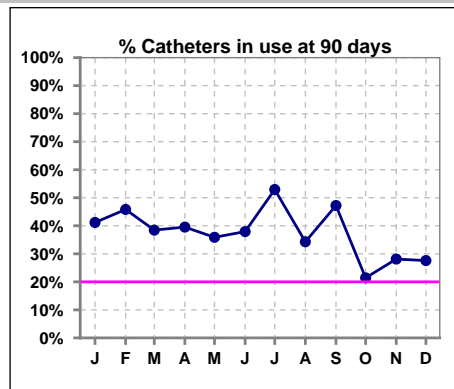
	Jan	Feb	Mar	Apr	May	Jun	Jul	Aug	Sep	Oct	Nov	Dec
# Patient	17	24	26	43	39	29	34	35	36	28	32	28
# Graft in Place	1	3	5	4	5	3	5	5	5	4	7	2
% Graft in Place	6%	13%	19%	9%	13%	10%	15%	14%	14%	14%	22%	7%



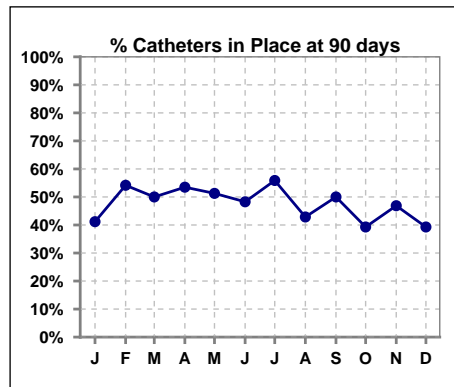
Methodology: a) All labs for 'Adequacy of Dialysis', 'Nutrition', 'Osteodystrophy', 'Anemia' and 'Diabetes' based on last value of month; b) BP's and #L processed are average of all values for month; c) Access data takes last access of month; d) Values for SGA and 'Infection Control' use most recent result.

IV. ACCESS - CONT. Access at 90 days for those patients that reached 90 days within the month.

	Jan	Feb	Mar	Apr	May	Jun	Jul	Aug	Sep	Oct	Nov	Dec
# Patient	17	24	26	43	39	29	34	35	36	28	32	29
# Catheters in use	7	11	10	17	14	11	18	12	17	6	9	8
% Catheters in use	41%	46%	38%	40%	36%	38%	53%	34%	47%	21%	28%	28%



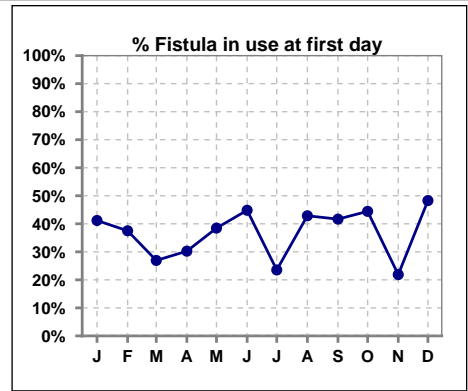
	Jan	Feb	Mar	Apr	May	Jun	Jul	Aug	Sep	Oct	Nov	Dec
# Patient	17	24	26	43	39	29	34	35	36	28	32	28
# Catheters in Place	7	13	13	23	20	14	19	15	18	11	15	11
% Catheters in Place	41%	54%	50%	53%	51%	48%	56%	43%	50%	39%	47%	39%



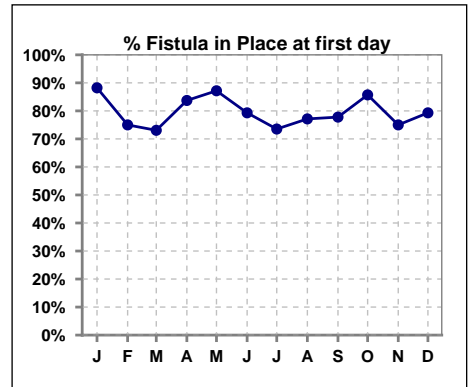
Methodology: a) All labs for 'Adequacy of Dialysis', 'Nutrition', 'Osteodystrophy', 'Anemia' and 'Diabetes' based on last value of month; b) BP's and #L processed are average of all values for month; c) Access data takes last access of month; d) Values for SGA and 'Infection Control' use most recent result.

IV. ACCESS - CONT. Access at first day for those patients that reached 90 days within the month.

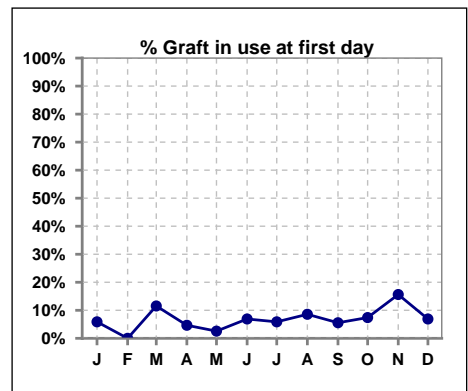
	Jan	Feb	Mar	Apr	May	Jun	Jul	Aug	Sep	Oct	Nov	Dec
# Patient	17	24	26	43	39	29	34	35	36	27	32	29
# Fistula in use	7	9	7	13	15	13	8	15	15	12	7	14
% Fistula in use	41%	38%	27%	30%	38%	45%	24%	43%	42%	44%	22%	48%



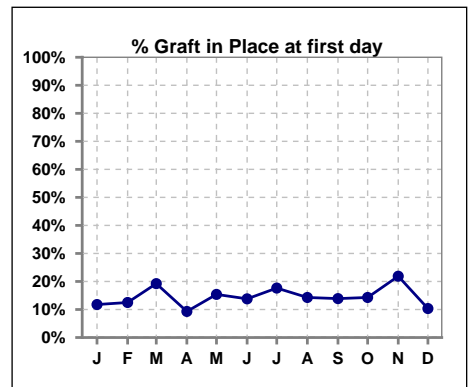
	Jan	Feb	Mar	Apr	May	Jun	Jul	Aug	Sep	Oct	Nov	Dec
# Patient	17	24	26	43	39	29	34	35	36	28	32	29
# Fistula in Place	15	18	19	36	34	23	25	27	28	24	24	23
% Fistula in Place	88%	75%	73%	84%	87%	79%	74%	77%	78%	86%	75%	79%



	Jan	Feb	Mar	Apr	May	Jun	Jul	Aug	Sep	Oct	Nov	Dec
# Patient	17	24	26	43	39	29	34	35	36	27	32	29
# Graft in use	1	0	3	2	1	2	2	3	2	2	5	2
% Graft in use	6%	0%	12%	5%	3%	7%	6%	9%	6%	7%	16%	7%



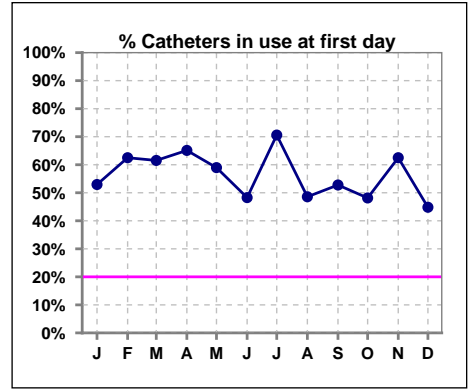
	Jan	Feb	Mar	Apr	May	Jun	Jul	Aug	Sep	Oct	Nov	Dec
# Patient	17	24	26	43	39	29	34	35	36	28	32	29
# Graft in Place	2	3	5	4	6	4	6	5	5	4	7	3
% Graft in Place	12%	13%	19%	9%	15%	14%	18%	14%	14%	14%	22%	10%



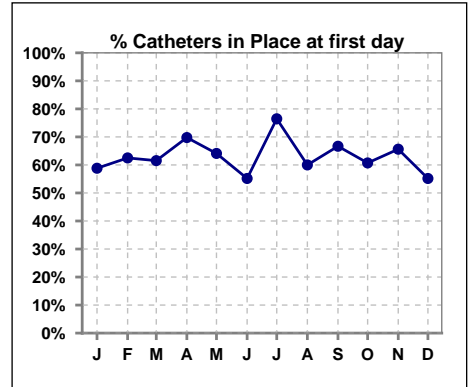
Methodology: a) All labs for 'Adequacy of Dialysis', 'Nutrition', 'Osteodystrophy', 'Anemia' and 'Diabetes' based on last value of month; b) BP's and #L processed are average of all values for month; c) Access data takes last access of month; d) Values for SGA and 'Infection Control' use most recent result.

IV. ACCESS - CONT. Access at first day for those patients that reached 90 days within the month.

	Jan	Feb	Mar	Apr	May	Jun	Jul	Aug	Sep	Oct	Nov	Dec
# Patient	17	24	26	43	39	29	34	35	36	27	32	29
# Catheters in use	9	15	16	28	23	14	24	17	19	13	20	13
% Catheters in use	53%	63%	62%	65%	59%	48%	71%	49%	53%	48%	63%	45%



	Jan	Feb	Mar	Apr	May	Jun	Jul	Aug	Sep	Oct	Nov	Dec
# Patient	17	24	26	43	39	29	34	35	36	28	32	29
# Catheters in Place	10	15	16	30	25	16	26	21	24	17	21	16
% Catheters in Place	59%	63%	62%	70%	64%	55%	76%	60%	67%	61%	66%	55%

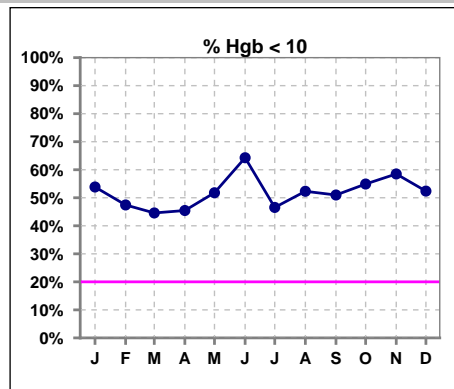


Methodology: a) All labs for 'Adequacy of Dialysis', 'Nutrition', 'Osteodystrophy', 'Anemia' and 'Diabetes' based on last value of month; b) BP's and #L processed are average of all values for month; c) Access data takes last access of month; d) Values for SGA and 'Infection Control' use most recent result.

V. ANEMIA

	Jan	Feb	Mar	Apr	May	Jun	Jul	Aug	Sep	Oct	Nov	Dec
# Hgb	52	78	83	66	56	56	58	65	51	51	53	63
# Hgb < 10	28	37	37	30	29	36	27	34	26	28	31	33
Pop. Mean	9.9	10.0	10.2	10.1	10.0	9.8	10.0	10.0	9.9	9.8	9.7	9.8
Std. Deviation	1.3	1.3	1.3	1.3	1.4	1.2	1.3	1.6	1.9	1.6	1.5	1.5
% Hgb < 10	54%	47%	45%	45%	52%	64%	47%	52%	51%	55%	58%	52%

Note: Excludes patients who received no ESA in month.



	Jan	Feb	Mar	Apr	May	Jun	Jul	Aug	Sep	Oct	Nov	Dec
# Hgb	52	78	83	66	56	56	58	65	51	51	53	63
# Hgb > 12	3	5	6	2	4	2	5	8	7	4	4	3
Pop. Mean	9.9	10.0	10.2	10.1	10.0	9.8	10.0	10.0	9.9	9.8	9.7	9.8
Std. Deviation	1.3	1.3	1.3	1.3	1.4	1.2	1.3	1.6	1.9	1.6	1.5	1.5
% Hgb > 12	6%	6%	7%	3%	7%	4%	9%	12%	14%	8%	8%	5%

Note: Excludes patients who received no ESA in month.

