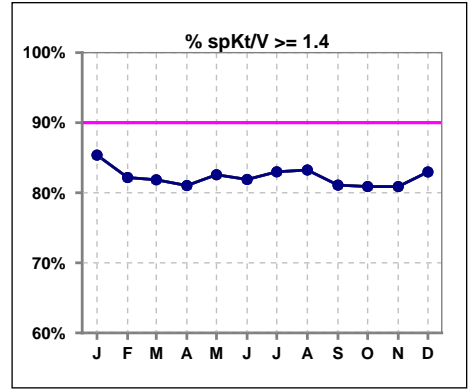
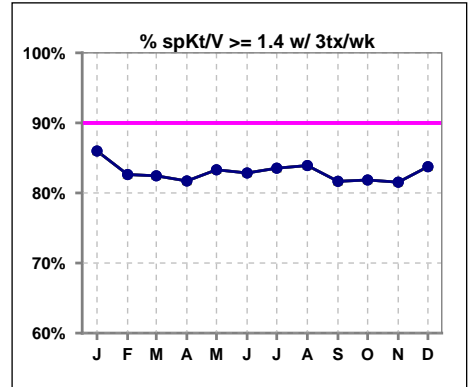


I. ADEQUACY OF DIALYSIS

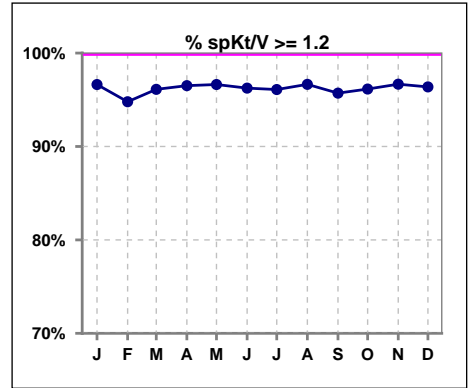
	Jan	Feb	Mar	Apr	May	Jun	Jul	Aug	Sep	Oct	Nov	Dec
# spKt/V	1306	1324	1339	1318	1337	1359	1358	1373	1375	1376	1381	1380
# spKt/V >= 1.4	1115	1088	1096	1068	1104	1113	1127	1143	1115	1113	1117	1145
Pop. Mean	1.66	1.64	1.64	1.64	1.65	1.64	1.67	1.65	1.65	1.63	1.64	1.68
Std. Deviation	0.29	0.30	0.29	0.30	0.30	0.30	0.31	0.29	0.31	0.30	0.29	0.32
% spKt/V >= 1.4	85%	82%	82%	81%	83%	82%	83%	83%	81%	81%	81%	83%



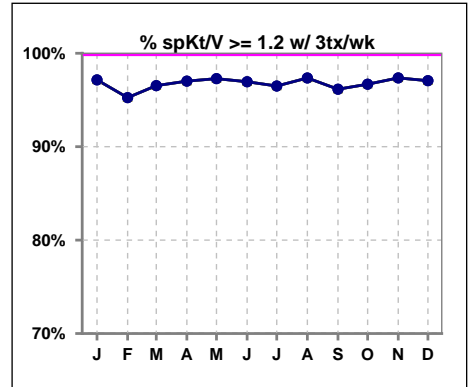
	Jan	Feb	Mar	Apr	May	Jun	Jul	Aug	Sep	Oct	Nov	Dec
# spKt/V w/ 3tx/wk	1263	1284	1299	1274	1288	1312	1312	1324	1325	1328	1327	1329
# spKt/V >= 1.4 w/3tx/wk	1086	1061	1071	1041	1073	1087	1096	1111	1082	1087	1082	1113
Pop. Mean	1.67	1.64	1.65	1.64	1.66	1.65	1.67	1.66	1.65	1.63	1.64	1.68
Std. Deviation	0.29	0.30	0.29	0.29	0.29	0.29	0.31	0.29	0.30	0.30	0.28	0.31
% >= 1.4 w/3tx/wk	86%	83%	82%	82%	83%	83%	84%	84%	82%	82%	82%	84%



	Jan	Feb	Mar	Apr	May	Jun	Jul	Aug	Sep	Oct	Nov	Dec
# spKt/V	1306	1324	1339	1318	1337	1359	1358	1373	1375	1376	1381	1380
# spKt/V >= 1.2	1262	1255	1287	1272	1292	1308	1305	1327	1316	1323	1335	1330
Pop. Mean	1.66	1.64	1.64	1.64	1.65	1.64	1.67	1.65	1.65	1.63	1.64	1.68
Std. Deviation	0.29	0.30	0.29	0.30	0.30	0.30	0.31	0.29	0.31	0.30	0.29	0.32
% spKt/V >= 1.2	97%	95%	96%	97%	97%	96%	96%	97%	96%	96%	97%	96%



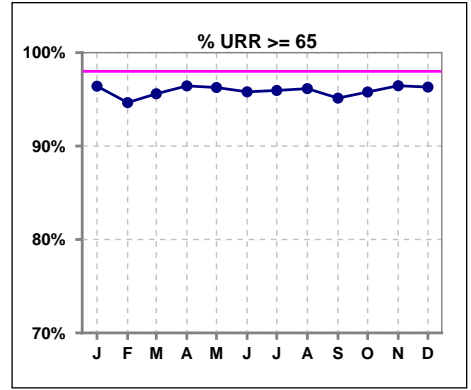
	Jan	Feb	Mar	Apr	May	Jun	Jul	Aug	Sep	Oct	Nov	Dec
# spKt/V w/ 3tx/wk	1263	1284	1299	1274	1288	1312	1312	1324	1325	1328	1327	1329
# spKt/V >= 1.2 w/3tx/wk	1227	1223	1254	1236	1253	1272	1266	1289	1274	1284	1292	1290
Pop. Mean	1.67	1.64	1.65	1.64	1.66	1.65	1.67	1.66	1.65	1.63	1.64	1.68
Std. Deviation	0.29	0.30	0.29	0.29	0.29	0.29	0.31	0.29	0.30	0.30	0.28	0.31
% >= 1.2 w/3tx/wk	97%	95%	97%	97%	97%	97%	96%	97%	96%	97%	97%	97%



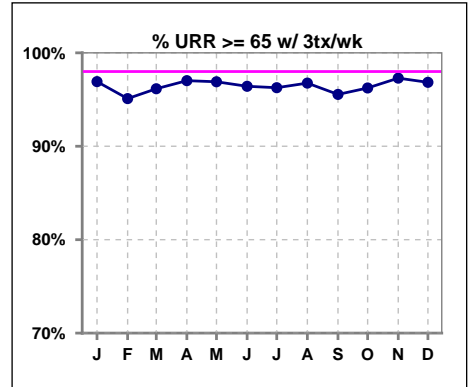
Methodology: a) All labs for 'Adequacy of Dialysis', 'Nutrition', 'Osteodystrophy', 'Anemia' and 'Diabetes' based on last value of month; b) BP's and #L processed are average of all values for month; c) Access data takes last access of month; d) Values for SGA and 'Infection Control' use most recent result.

I. ADEQUACY OF DIALYSIS - CONT.

	Jan	Feb	Mar	Apr	May	Jun	Jul	Aug	Sep	Oct	Nov	Dec
# URR	1309	1327	1340	1320	1340	1359	1359	1376	1376	1377	1383	1383
# URR >= 65	1262	1256	1281	1273	1290	1302	1304	1323	1309	1319	1334	1332
Pop. Mean	76	75	75	75	76	76	76	76	75	75	75	76
Std. Deviation	6.22	6.52	6.14	6.22	6.36	6.20	6.24	6.12	6.47	6.37	6.07	6.52
% URR >= 65	96%	95%	96%	96%	96%	96%	96%	96%	95%	96%	96%	96%



	Jan	Feb	Mar	Apr	May	Jun	Jul	Aug	Sep	Oct	Nov	Dec
# URR w/ 3tx/wk	1266	1286	1300	1276	1291	1312	1313	1327	1326	1329	1329	1331
# URR>=65 w/ 3tx/wk	1227	1223	1250	1238	1251	1265	1264	1284	1267	1279	1293	1289
Pop. Mean	76	75	76	75	76	76	76	76	76	75	75	76
Std. Deviation	6.13	6.36	6.04	6.07	6.19	5.98	6.19	5.97	6.40	6.27	5.92	6.31
% URR>=65 w/ 3tx/wk	97%	95%	96%	97%	97%	96%	96%	97%	96%	96%	97%	97%

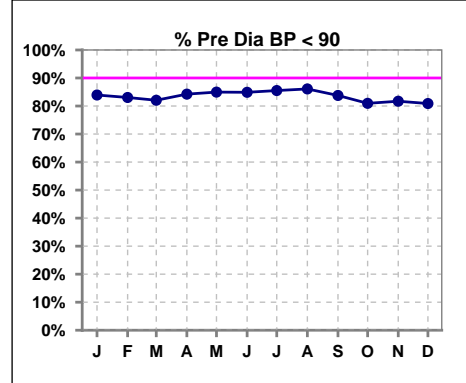


Methodology: a) All labs for 'Adequacy of Dialysis', 'Nutrition', 'Osteodystrophy', 'Anemia' and 'Diabetes' based on last value of month; b) BP's and #L processed are average of all values for month; c) Access data takes last access of month; d) Values for SGA and 'Infection Control' use most recent result.

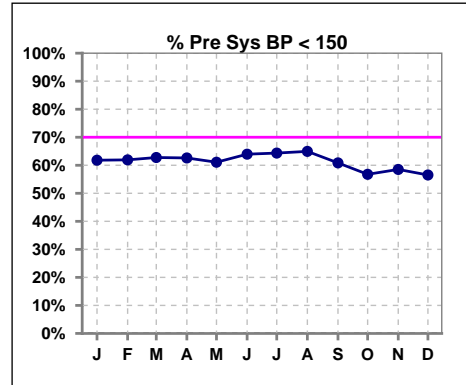
I. ADEQUACY OF DIALYSIS - CONT.

Blood Pressure Control (Pre)

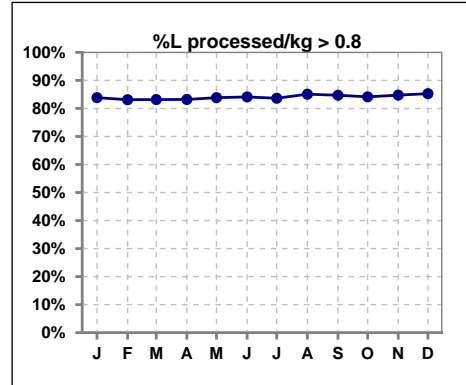
	Jan	Feb	Mar	Apr	May	Jun	Jul	Aug	Sep	Oct	Nov	Dec
# Pre Dia BP	1325	1345	1343	1339	1344	1364	1368	1381	1386	1381	1389	1392
# Pre Dia BP < 90	1112	1117	1102	1128	1142	1158	1170	1189	1161	1118	1135	1126
Pop. Mean	77	77	77	77	77	76	76	76	77	78	78	78
Std. Deviation	12.8	12.9	12.7	12.5	12.7	12.8	12.7	12.6	12.7	13.0	12.7	12.6
% Pre Dia BP < 90	84%	83%	82%	84%	85%	85%	86%	86%	84%	81%	82%	81%



	Jan	Feb	Mar	Apr	May	Jun	Jul	Aug	Sep	Oct	Nov	Dec
# Pre Sys BP	1325	1345	1343	1340	1344	1365	1369	1381	1387	1381	1391	1392
# Pre Sys BP < 150	819	833	843	839	821	873	881	897	844	784	814	787
Pop. Mean	144	144	144	143	144	143	142	142	144	145	145	146
Std. Deviation	20.2	20.7	20.4	20.6	20.9	20.9	20.4	20.5	20.7	20.6	21.0	20.5
%Pre Sys BP <150	62%	62%	63%	63%	61%	64%	64%	65%	61%	57%	59%	57%



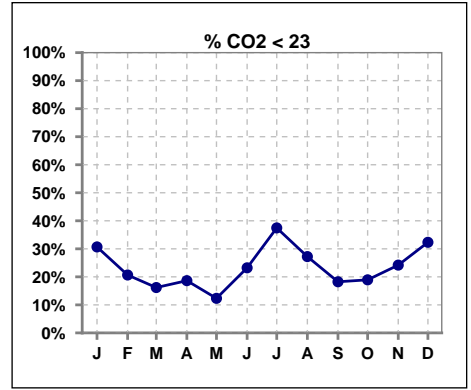
	Jan	Feb	Mar	Apr	May	Jun	Jul	Aug	Sep	Oct	Nov	Dec
# L processed/kg	1325	1345	1343	1340	1344	1365	1369	1381	1387	1381	1391	1392
# L processed/kg>0.8	1111	1118	1117	1115	1127	1148	1145	1175	1175	1162	1179	1187
Pop. Mean	1	1	1	1	1	1	1	1	1	1	1	1
Std. Deviation	0.3	0.3	0.3	0.3	0.3	0.3	0.3	0.3	0.3	0.3	0.3	0.3
% L processed/kg>0.8	84%	83%	83%	83%	84%	84%	84%	85%	85%	84%	85%	85%



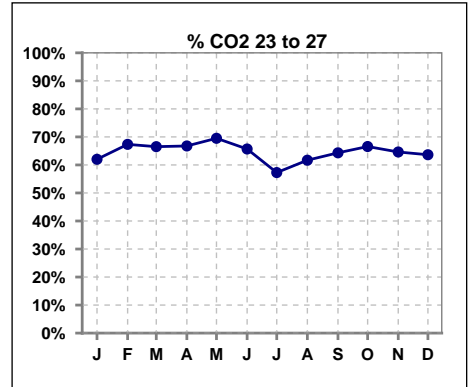
Methodology: a) All labs for 'Adequacy of Dialysis', 'Nutrition', 'Osteodystrophy', 'Anemia' and 'Diabetes' based on last value of month; b) BP's and #L processed are average of all values for month; c) Access data takes last access of month; d) Values for SGA and 'Infection Control' use most recent result.

I. ADEQUACY OF DIALYSIS - CONT.

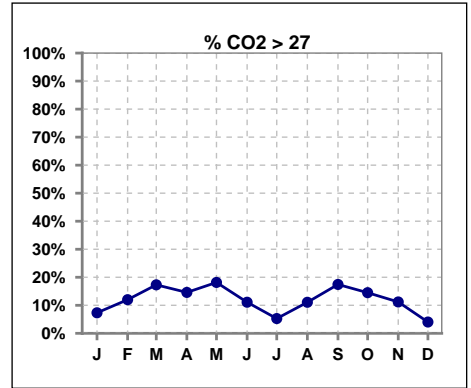
	Jan	Feb	Mar	Apr	May	Jun	Jul	Aug	Sep	Oct	Nov	Dec
# CO2	1311	1341	1341	1336	1338	1361	1367	1381	1382	1379	1385	1389
# CO2 < 23	402	277	217	249	165	316	512	376	252	261	335	449
Pop. Mean	24	25	25	25	25	24	23	24	25	25	24	23
Std. Deviation	2.73	2.78	2.85	2.71	2.67	2.68	2.85	2.89	2.84	2.69	2.95	2.56
% CO2 < 23	31%	21%	16%	19%	12%	23%	37%	27%	18%	19%	24%	32%



	Jan	Feb	Mar	Apr	May	Jun	Jul	Aug	Sep	Oct	Nov	Dec
# CO2	1311	1341	1341	1336	1338	1361	1367	1381	1382	1379	1385	1389
# CO2 23 to 27	813	903	892	892	930	894	783	852	889	918	895	884
Pop. Mean	24	25	25	25	25	24	23	24	25	25	24	23
Std. Deviation	2.73	2.78	2.85	2.71	2.67	2.68	2.85	2.89	2.84	2.69	2.95	2.56
% CO2 23 to 27	62%	67%	67%	67%	70%	66%	57%	62%	64%	67%	65%	64%



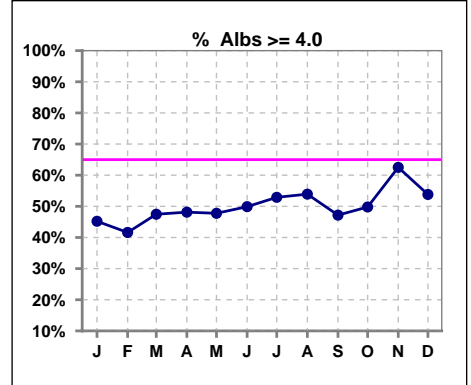
	Jan	Feb	Mar	Apr	May	Jun	Jul	Aug	Sep	Oct	Nov	Dec
# CO2	1311	1341	1341	1336	1338	1361	1367	1381	1382	1379	1385	1389
# CO2 > 27	96	161	232	195	243	151	72	153	241	200	155	56
Pop. Mean	24	25	25	25	25	24	23	24	25	25	24	23
Std. Deviation	2.73	2.78	2.85	2.71	2.67	2.68	2.85	2.89	2.84	2.69	2.95	2.56
% CO2 > 27	7%	12%	17%	15%	18%	11%	5%	11%	17%	15%	11%	4%



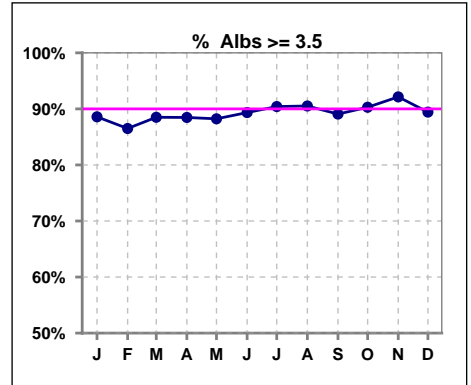
*Albumin values use BCG method - as of July 2001

II. NUTRITION

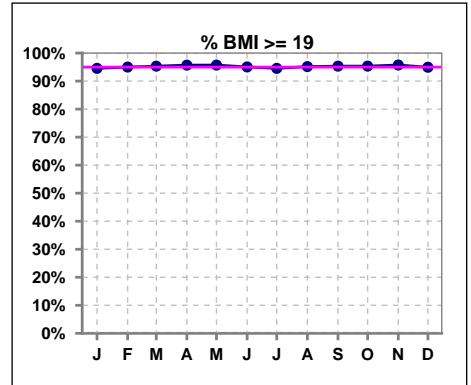
	Jan	Feb	Mar	Apr	May	Jun	Jul	Aug	Sep	Oct	Nov	Dec
# Albumin	1314	1341	1340	1336	1342	1361	1367	1382	1382	1380	1387	1390
# Albumin >= 4.0	594	558	636	643	641	679	723	745	652	687	867	748
Pop. Mean	3.9	3.8	3.9	3.9	3.9	3.9	3.9	3.9	3.9	3.9	4.0	3.9
Std. Deviation	0.38	0.39	0.39	0.38	0.38	0.38	0.37	0.37	0.37	0.37	0.40	0.42
% Alb >= 4.0	45%	42%	47%	48%	48%	50%	53%	54%	47%	50%	63%	54%



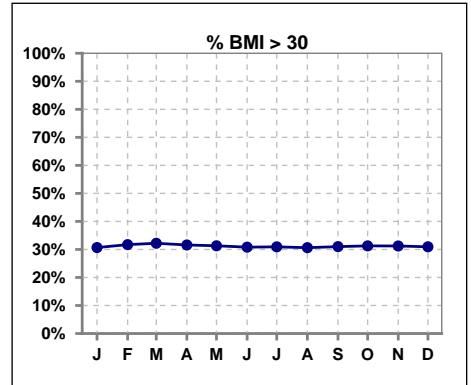
	Jan	Feb	Mar	Apr	May	Jun	Jul	Aug	Sep	Oct	Nov	Dec
# Albumin	1314	1341	1340	1336	1342	1361	1367	1382	1382	1380	1387	1390
# Albumin >= 3.5	1164	1160	1186	1182	1184	1216	1236	1251	1231	1246	1278	1243
Pop. Mean	3.9	3.8	3.9	3.9	3.9	3.9	3.9	3.9	3.9	3.9	4.0	3.9
Std. Deviation	0.38	0.39	0.39	0.38	0.38	0.38	0.37	0.37	0.37	0.37	0.40	0.42
% Alb >= 3.5	89%	87%	89%	88%	88%	89%	90%	91%	89%	90%	92%	89%



	Jan	Feb	Mar	Apr	May	Jun	Jul	Aug	Sep	Oct	Nov	Dec
# BMI	1301	1324	1326	1323	1328	1353	1356	1368	1374	1372	1383	1382
# BMI >= 19	1230	1258	1264	1266	1272	1286	1284	1302	1310	1308	1324	1313
Pop. Mean	28	28	28	28	28	28	28	28	28	28	28	28
Std. Deviation	7.0	7.0	7.0	6.9	6.9	7.0	6.9	6.9	6.8	6.8	6.9	6.9
% BMI >= 19	95%	95%	95%	96%	96%	95%	95%	95%	95%	95%	96%	95%



	Jan	Feb	Mar	Apr	May	Jun	Jul	Aug	Sep	Oct	Nov	Dec
# BMI	1301	1324	1326	1323	1328	1353	1356	1368	1374	1372	1383	1382
# BMI > 30	399	420	427	418	416	417	420	419	426	429	432	428
Pop. Mean	28	28	28	28	28	28	28	28	28	28	28	28
Std. Deviation	7.0	7.0	7.0	6.9	6.9	7.0	6.9	6.9	6.8	6.8	6.9	6.9
% BMI > 30	31%	32%	32%	32%	31%	31%	31%	31%	31%	31%	31%	31%

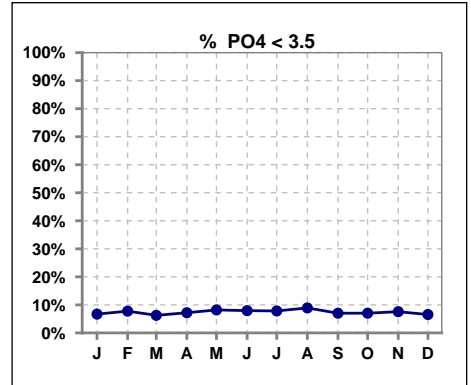


Methodology: a) All labs for 'Adequacy of Dialysis', 'Nutrition', 'Osteodystrophy', 'Anemia' and 'Diabetes' based on last value of month; b) BP's and #L processed are average of all values for month; c) Access data takes last access of month; d) Values for SGA and 'Infection Control' use most recent result.

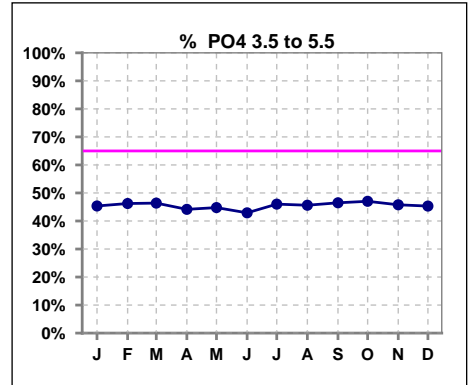
Lab methodology for PTH changed January 2012

III. OSTEODYSTROPHY

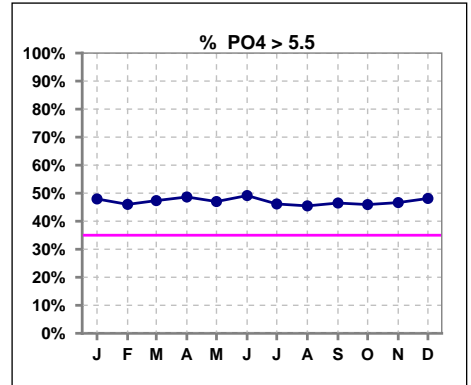
	Jan	Feb	Mar	Apr	May	Jun	Jul	Aug	Sep	Oct	Nov	Dec
# PO4	1314	1341	1341	1334	1342	1361	1367	1381	1381	1380	1387	1390
# PO4 < 3.5	88	104	84	96	110	108	107	123	97	97	105	91
Pop. Mean	5.7	5.6	5.7	5.7	5.7	5.7	5.7	5.6	5.7	5.7	5.7	5.8
Std. Deviation	1.74	1.75	1.77	1.81	1.85	1.84	1.88	1.82	1.79	1.88	1.84	1.86
% PO4 < 3.5	7%	8%	6%	7%	8%	8%	8%	9%	7%	7%	8%	7%



	Jan	Feb	Mar	Apr	May	Jun	Jul	Aug	Sep	Oct	Nov	Dec
# PO4	1314	1341	1341	1334	1342	1361	1367	1381	1381	1380	1387	1390
# PO4 3.5 to 5.5	596	620	622	589	601	584	629	630	642	649	635	630
Pop. Mean	5.7	5.6	5.7	5.7	5.7	5.7	5.7	5.6	5.7	5.7	5.7	5.8
Std. Deviation	1.74	1.75	1.77	1.81	1.85	1.84	1.88	1.82	1.79	1.88	1.84	1.86
% PO4 3.5 to 5.5	45%	46%	46%	44%	45%	43%	46%	46%	46%	47%	46%	45%



	Jan	Feb	Mar	Apr	May	Jun	Jul	Aug	Sep	Oct	Nov	Dec
# PO4	1314	1341	1341	1334	1342	1361	1367	1381	1381	1380	1387	1390
# PO4 > 5.5	630	617	635	649	631	669	631	628	642	634	647	669
Pop. Mean	5.7	5.6	5.7	5.7	5.7	5.7	5.7	5.6	5.7	5.7	5.7	5.8
Std. Deviation	1.74	1.75	1.77	1.81	1.85	1.84	1.88	1.82	1.79	1.88	1.84	1.86
% PO4 > 5.5	48%	46%	47%	49%	47%	49%	46%	45%	46%	46%	47%	48%

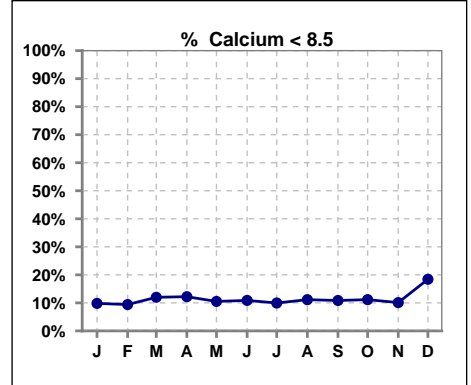


Methodology: a) All labs for 'Adequacy of Dialysis', 'Nutrition', 'Osteodystrophy', 'Anemia' and 'Diabetes' based on last value of month; b) BP's and #L processed are average of all values for month; c) Access data takes last access of month; d) Values for SGA and 'Infection Control' use most recent result.

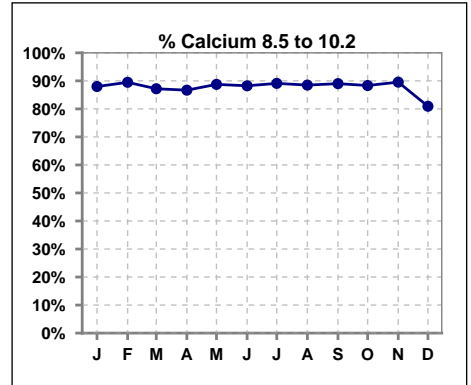
Lab methodology for PTH changed January 2012

III. OSTEODYSTROPHY - CONT.

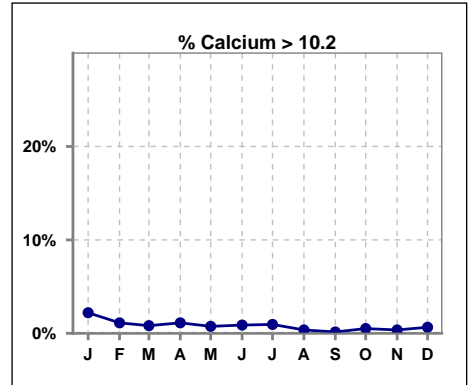
	Jan	Feb	Mar	Apr	May	Jun	Jul	Aug	Sep	Oct	Nov	Dec
# Calcium	1314	1341	1342	1336	1342	1361	1367	1382	1383	1381	1387	1390
# Calcium < 8.5	129	126	161	163	141	148	136	154	150	154	140	256
Pop. Mean	9.3	9.3	9.2	9.2	9.2	9.2	9.3	9.2	9.2	9.2	9.2	9.0
Std. Deviation	0.68	0.61	0.62	0.64	0.61	0.63	0.62	0.63	0.59	0.60	0.62	0.66
% Calcium < 8.5	10%	9%	12%	12%	11%	11%	10%	11%	11%	11%	10%	18%



	Jan	Feb	Mar	Apr	May	Jun	Jul	Aug	Sep	Oct	Nov	Dec
# Calcium	1314	1341	1342	1336	1342	1361	1367	1382	1383	1381	1387	1390
# Calcium 8.5 to 10.2	1156	1200	1170	1158	1191	1201	1218	1223	1231	1220	1242	1125
Pop. Mean	9.3	9.3	9.2	9.2	9.2	9.2	9.3	9.2	9.2	9.2	9.2	9.0
Std. Deviation	0.68	0.61	0.62	0.64	0.61	0.63	0.62	0.63	0.59	0.60	0.62	0.66
% Calcium 8.5 to 10.2	88%	89%	87%	87%	89%	88%	89%	88%	89%	88%	90%	81%



	Jan	Feb	Mar	Apr	May	Jun	Jul	Aug	Sep	Oct	Nov	Dec
# Calcium	1314	1341	1342	1336	1342	1361	1367	1382	1383	1381	1387	1390
# Calcium > 10.2	29	15	11	15	10	12	13	5	2	7	5	9
Pop. Mean	9.3	9.3	9.2	9.2	9.2	9.2	9.3	9.2	9.2	9.2	9.2	9.0
Std. Deviation	0.68	0.61	0.62	0.64	0.61	0.63	0.62	0.63	0.59	0.60	0.62	0.66
% Calcium > 10.2	2%	1%	1%	1%	1%	1%	1%	0%	0%	1%	0%	1%

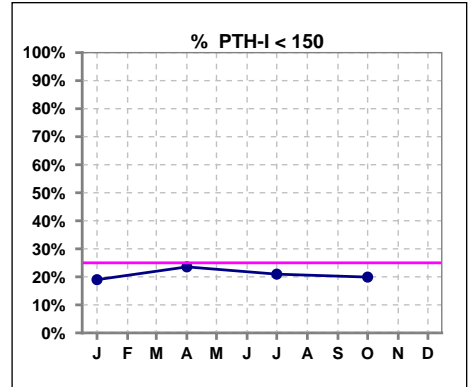


Methodology: a) All labs for 'Adequacy of Dialysis', 'Nutrition', 'Osteodystrophy', 'Anemia' and 'Diabetes' based on last value of month; b) BP's and #L processed are average of all values for month; c) Access data takes last access of month; d) Values for SGA and 'Infection Control' use most recent result.

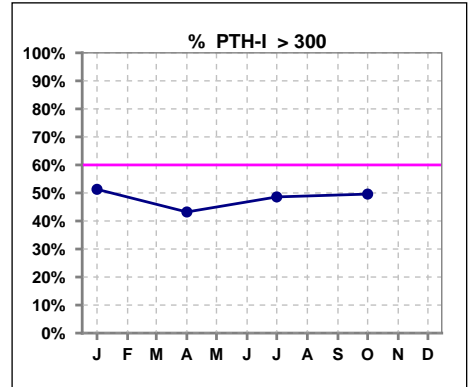
Lab methodology for PTH changed January 2012

III. OSTEODYSTROPHY - CONT.

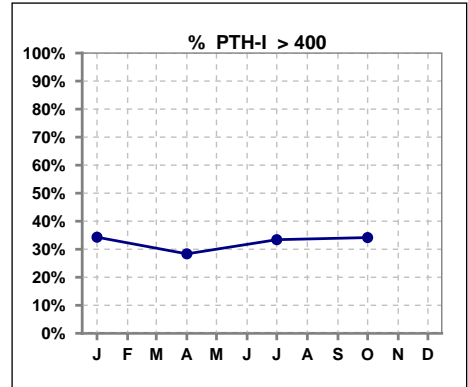
	Jan	Feb	Mar	Apr	May	Jun	Jul	Aug	Sep	Oct	Nov	Dec
# PTH-I	1306			1312			1350			1361		
# PTH-I < 150	248			309			283			271		
Pop. Mean	385			352			362			372		
Std. Deviation	371			324			311			319		
% PTH-I < 150	19%			24%			21%			20%		



	Jan	Feb	Mar	Apr	May	Jun	Jul	Aug	Sep	Oct	Nov	Dec
# PTH-I	1306			1312			1350			1361		
# PTH-I > 300	670			567			656			675		
Pop. Mean	385			352			362			372		
Std. Deviation	371			324			311			319		
% PTH-I > 300	51%			43%			49%			50%		



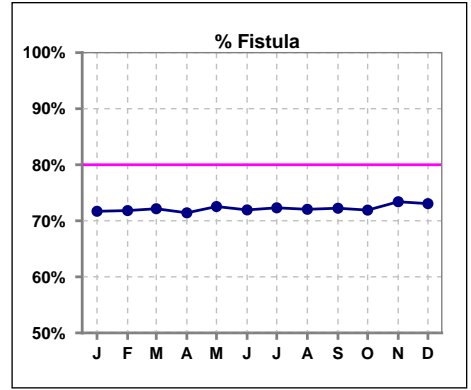
	Jan	Feb	Mar	Apr	May	Jun	Jul	Aug	Sep	Oct	Nov	Dec
# PTH-I	1306			1312			1350			1361		
# PTH-I > 400	448			372			451			465		
Pop. Mean	385			352			362			372		
Std. Deviation	371			324			311			319		
% PTH-I > 400	34%			28%			33%			34%		



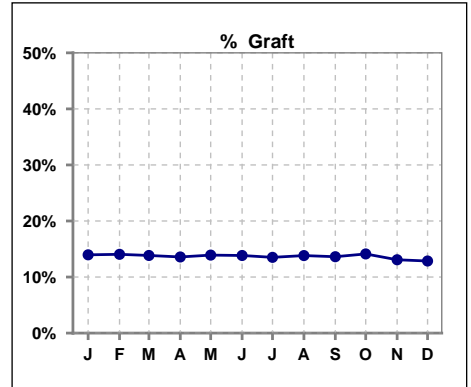
Methodology: a) All labs for 'Adequacy of Dialysis', 'Nutrition', 'Osteodystrophy', 'Anemia' and 'Diabetes' based on last value of month; b) BP's and #L processed are average of all values for month; c) Access data takes last access of month; d) Values for SGA and 'Infection Control' use most recent result.

IV. ACCESS

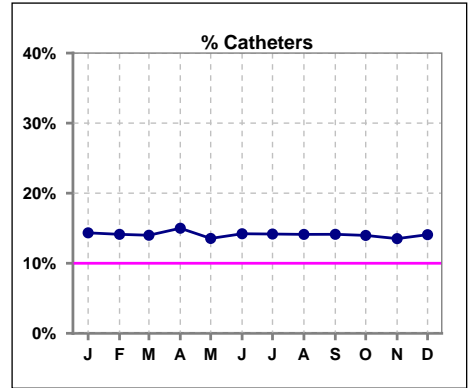
	Jan	Feb	Mar	Apr	May	Jun	Jul	Aug	Sep	Oct	Nov	Dec
# Access	1325	1345	1342	1339	1344	1365	1369	1381	1387	1381	1391	1391
# Fistula	950	966	969	957	975	982	990	995	1002	993	1021	1017
% Fistula	72%	72%	72%	71%	73%	72%	72%	72%	72%	72%	73%	73%



	Jan	Feb	Mar	Apr	May	Jun	Jul	Aug	Sep	Oct	Nov	Dec
# Access	1325	1345	1342	1339	1344	1365	1369	1381	1387	1381	1391	1391
# Graft	185	189	186	182	187	189	185	191	189	195	182	179
% Graft	14%	14%	14%	14%	14%	14%	14%	14%	14%	14%	13%	13%



	Jan	Feb	Mar	Apr	May	Jun	Jul	Aug	Sep	Oct	Nov	Dec
# Access	1325	1345	1342	1339	1344	1365	1369	1381	1387	1381	1391	1391
# Catheters	190	190	188	201	182	194	194	195	196	193	188	196
% Catheters	14%	14%	14%	15%	14%	14%	14%	14%	14%	14%	14%	14%



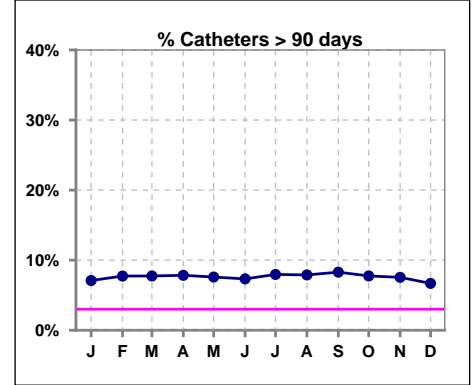
Methodology: a) All labs for 'Adequacy of Dialysis', 'Nutrition', 'Osteodystrophy', 'Anemia' and 'Diabetes' based on last value of month; b) BP's and #L processed are average of all values for month; c) Access data takes last access of month; d) Values for SGA and 'Infection Control' use most recent result.

IV. ACCESS - CONT.

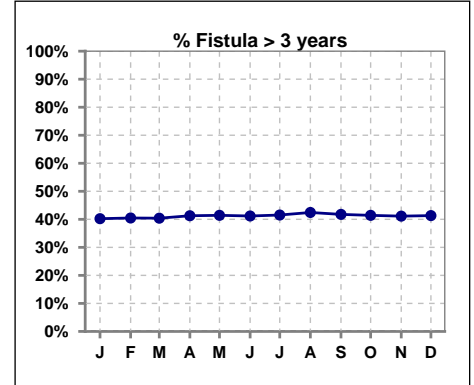
Catheters > 90 days

	Jan	Feb	Mar	Apr	May	Jun	Jul	Aug	Sep	Oct	Nov	Dec
# Access	1325	1345	1343	1340	1344	1365	1369	1381	1387	1381	1391	1392
# Catheters	94	104	104	105	102	100	109	109	115	107	105	93
% Catheters	7%	8%	8%	8%	8%	7%	8%	8%	8%	8%	8%	7%

Definition: Catheter in use on last treatment of the month



	Jan	Feb	Mar	Apr	May	Jun	Jul	Aug	Sep	Oct	Nov	Dec
# Fistula	957	966	975	969	980	993	1004	1013	1008	1014	1021	1026
# Fistula > 3 yrs	385	391	394	400	406	409	417	430	421	420	420	424
% Fistula > 3 yrs	40%	40%	40%	41%	41%	41%	42%	42%	42%	41%	41%	41%

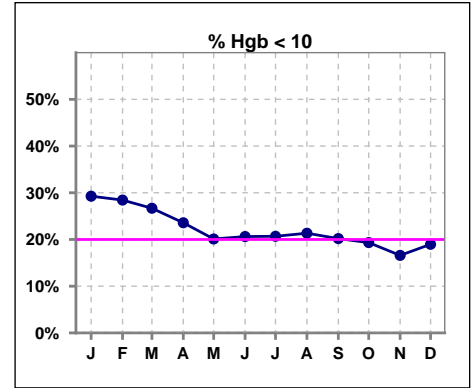


Methodology: a) All labs for 'Adequacy of Dialysis', 'Nutrition', 'Osteodystrophy', 'Anemia' and 'Diabetes' based on last value of month; b) BP's and #L processed are average of all values for month; c) Access data takes last access of month; d) Values for SGA and 'Infection Control' use most recent result.

V. ANEMIA

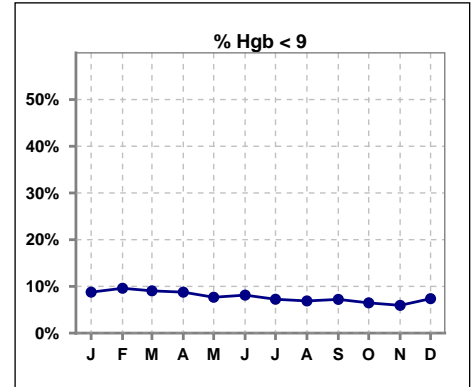
	Jan	Feb	Mar	Apr	May	Jun	Jul	Aug	Sep	Oct	Nov	Dec
# Hgb	1107	1157	1128	1141	1134	1144	1146	1148	1164	1174	1145	1181
# Hgb < 10	324	329	301	269	228	236	237	245	235	227	190	224
Pop. Mean	10.4	10.6	10.5	10.6	10.7	10.7	10.7	10.6	10.7	10.8	10.8	10.7
Std. Deviation	1.1	1.2	1.1	1.1	1.1	1.1	1.1	1.1	1.1	1.1	1.0	1.1
% Hgb < 10	29%	28%	27%	24%	20%	21%	21%	21%	20%	19%	17%	19%

Note: Excludes patients who received no ESA in month.



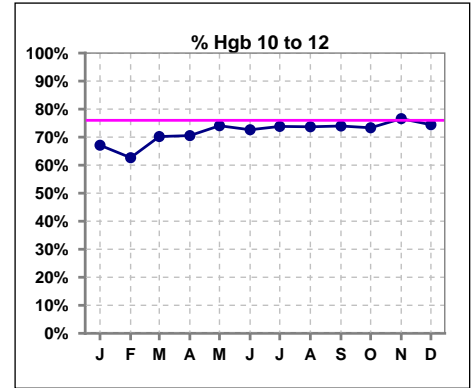
	Jan	Feb	Mar	Apr	May	Jun	Jul	Aug	Sep	Oct	Nov	Dec
# Hgb	1107	1157	1128	1141	1134	1144	1146	1148	1164	1174	1145	1181
# Hgb < 9	97	111	102	100	87	93	83	79	84	76	68	87
Pop. Mean	10.4	10.6	10.5	10.6	10.7	10.7	10.7	10.6	10.7	10.8	10.8	10.7
Std. Deviation	1.1	1.2	1.1	1.1	1.1	1.1	1.1	1.1	1.1	1.1	1.0	1.1
% Hgb < 9	9%	10%	9%	9%	8%	8%	7%	7%	7%	6%	6%	7%

Note: Excludes patients who received no ESA in month.



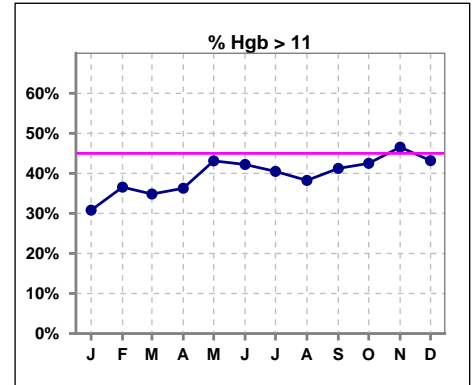
	Jan	Feb	Mar	Apr	May	Jun	Jul	Aug	Sep	Oct	Nov	Dec
# Hgb	1107	1157	1128	1141	1134	1144	1146	1148	1164	1174	1145	1181
# Hgb 10 to 12	743	725	792	805	840	831	846	846	861	861	877	879
Pop. Mean	10.4	10.6	10.5	10.6	10.7	10.7	10.7	10.6	10.7	10.8	10.8	10.7
Std. Deviation	1.1	1.2	1.1	1.1	1.1	1.1	1.1	1.1	1.1	1.1	1.0	1.1
% Hgb 10 to 12	67%	63%	70%	71%	74%	73%	74%	74%	74%	73%	77%	74%

Note: Excludes patients who received no ESA in month.



	Jan	Feb	Mar	Apr	May	Jun	Jul	Aug	Sep	Oct	Nov	Dec
# Hgb	1107	1157	1128	1141	1134	1144	1146	1148	1164	1174	1145	1181
# Hgb > 11	341	423	393	414	489	483	464	439	480	499	533	510
Pop. Mean	10.4	10.6	10.5	10.6	10.7	10.7	10.7	10.6	10.7	10.8	10.8	10.7
Std. Deviation	1.1	1.2	1.1	1.1	1.1	1.1	1.1	1.1	1.1	1.1	1.0	1.1
% Hgb > 11	31%	37%	35%	36%	43%	42%	40%	38%	41%	43%	47%	43%

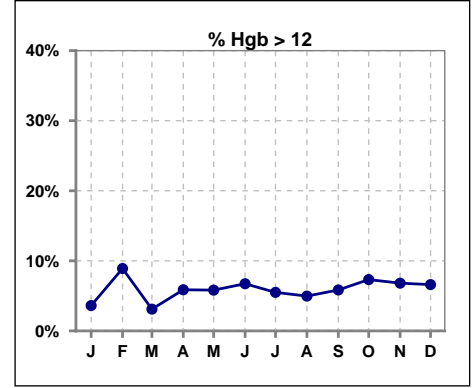
Note: Excludes patients who received no ESA in month.



V. ANEMIA - CONT.

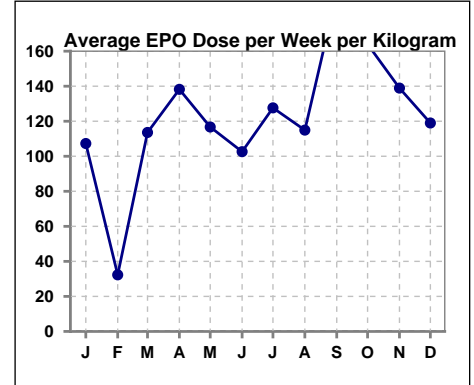
	Jan	Feb	Mar	Apr	May	Jun	Jul	Aug	Sep	Oct	Nov	Dec
# Hgb	1107	1157	1128	1141	1134	1144	1146	1148	1164	1174	1145	1181
# Hgb > 12	40	103	35	67	66	77	63	57	68	86	78	78
Pop. Mean	10.4	10.6	10.5	10.6	10.7	10.7	10.7	10.6	10.7	10.8	10.8	10.7
Std. Deviation	1.1	1.2	1.1	1.1	1.1	1.1	1.1	1.1	1.1	1.1	1.0	1.1
% Hgb > 12	4%	9%	3%	6%	6%	7%	5%	5%	6%	7%	7%	7%

Note: Excludes patients who received no ESA in month.



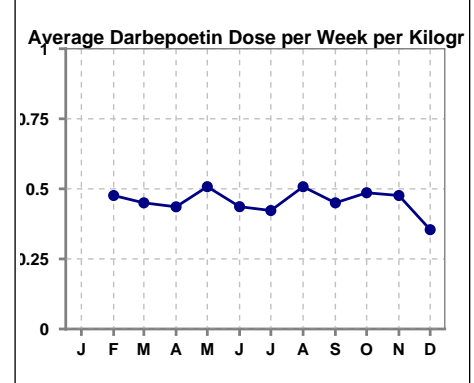
Average EPO Dose per Week per Kilogram

	Jan	Feb	Mar	Apr	May	Jun	Jul	Aug	Sep	Oct	Nov	Dec
# Average EPO	107.3	32.3	113.6	138.2	116.7	102.6	127.6	114.9	192.9	164.0	138.9	119.0



Average Darbepoetin Dose per Week per Kilogram

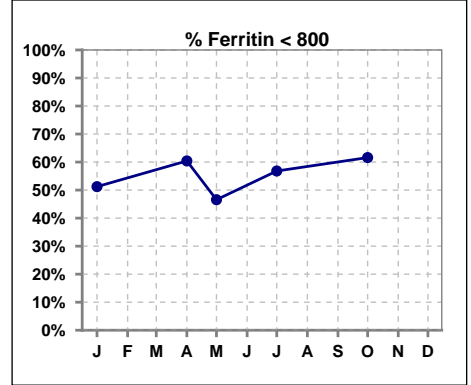
	Jan	Feb	Mar	Apr	May	Jun	Jul	Aug	Sep	Oct	Nov	Dec
# Average Darbepoetin		0.5	0.5	0.4	0.5	0.4	0.4	0.5	0.5	0.5	0.5	0.4



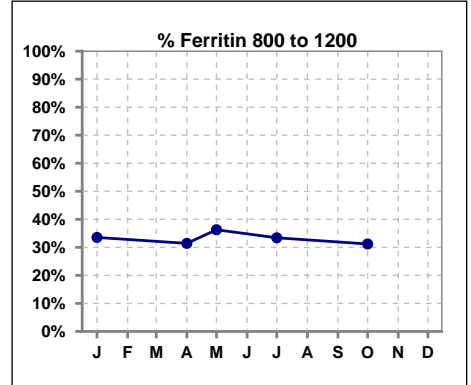
V. ANEMIA - CONT.

Iron Profile

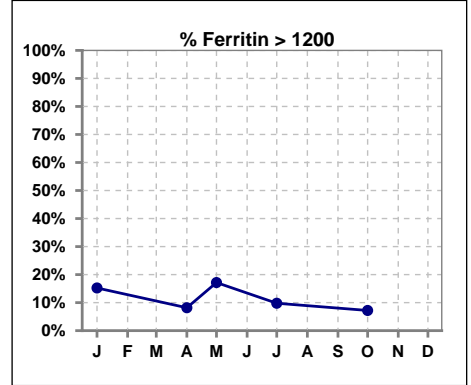
	Jan	Feb	Mar	Apr	May	Jun	Jul	Aug	Sep	Oct	Nov	Dec
# Ferritin	1300			1321	408		1350			1375		
# Ferritin < 800	666			798	190		767			847		
Pop. Mean	842			750	859		777			748		
Std. Deviation	553			388	397		386			472		
% Ferritin < 800	51%			60%	47%		57%			62%		



	Jan	Feb	Mar	Apr	May	Jun	Jul	Aug	Sep	Oct	Nov	Dec
# Ferritin	1300			1321	408		1350			1375		
# Ferritin 800 to 1200	436			415	148		451			429		
Pop. Mean	842			750	859		777			748		
Std. Deviation	553			388	397		386			472		
% Ferritin 800 to 1200	34%			31%	36%		33%			31%		



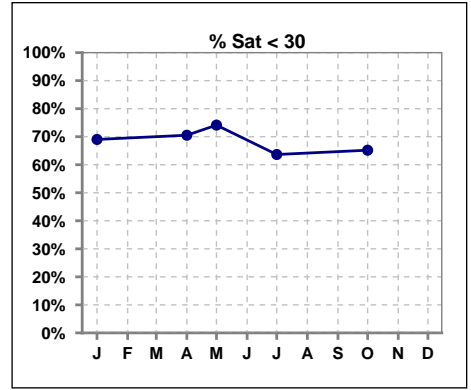
	Jan	Feb	Mar	Apr	May	Jun	Jul	Aug	Sep	Oct	Nov	Dec
# Ferritin	1300			1321	408		1350			1375		
# Ferritin > 1200	198			108	70		132			99		
Pop. Mean	842			750	859		777			748		
Std. Deviation	553			388	397		386			472		
% Ferritin > 1200	15%			8%	17%		10%			7%		



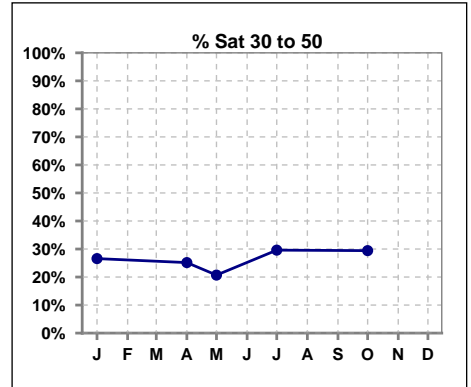
Methodology: a) All labs for 'Adequacy of Dialysis', 'Nutrition', 'Osteodystrophy', 'Anemia' and 'Diabetes' based on last value of month; b) BP's and #L processed are average of all values for month; c) Access data takes last access of month; d) Values for SGA and 'Infection Control' use most recent result.

V. ANEMIA - CONT.

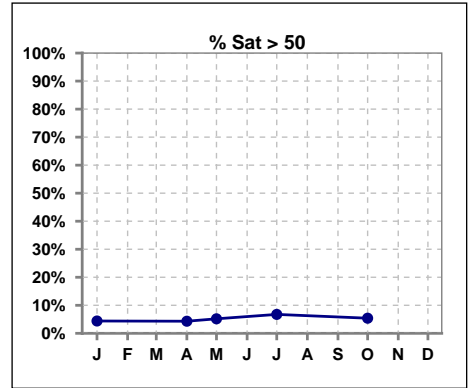
	Jan	Feb	Mar	Apr	May	Jun	Jul	Aug	Sep	Oct	Nov	Dec
# % Sat	1298			1320	406		1348			1373		
# % Sat < 30	896			931	301		858			895		
Pop. Mean	27			26	25		28			28		
Std. Deviation	13			13	12		14			13		
% % Sat < 30	69%			71%	74%		64%			65%		



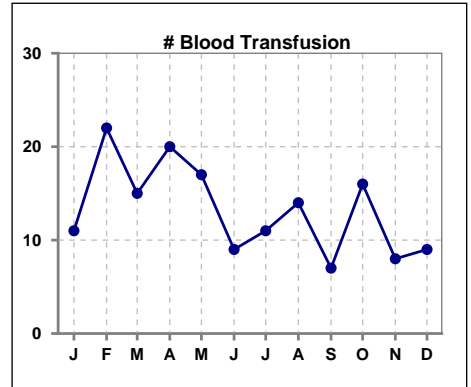
	Jan	Feb	Mar	Apr	May	Jun	Jul	Aug	Sep	Oct	Nov	Dec
# % Sat	1298			1320	406		1348			1373		
# % Sat 30 to 50	345			332	84		399			404		
Pop. Mean	27			26	25		28			28		
Std. Deviation	13			13	12		14			13		
% % Sat 30 to 50	27%			25%	21%		30%			29%		



	Jan	Feb	Mar	Apr	May	Jun	Jul	Aug	Sep	Oct	Nov	Dec
# % Sat	1298			1320	406		1348			1373		
# % Sat > 50	57			57	21		91			74		
Pop. Mean	27			26	25		28			28		
Std. Deviation	13			13	12		14			13		
% % Sat > 50	4%			4%	5%		7%			5%		

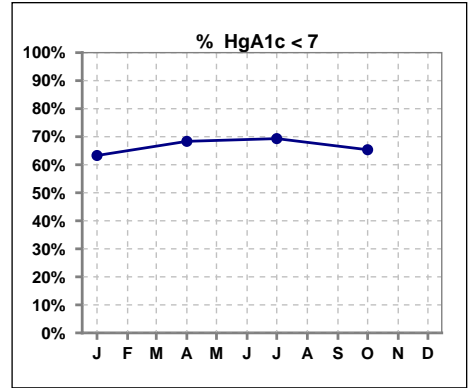


	Jan	Feb	Mar	Apr	May	Jun	Jul	Aug	Sep	Oct	Nov	Dec
# Patient	1331	1353	1354	1345	1351	1368	1376	1388	1398	1392	1404	1407
# Blood Transfusion	11	22	15	20	17	9	11	14	7	16	8	9



VI. Diabetes

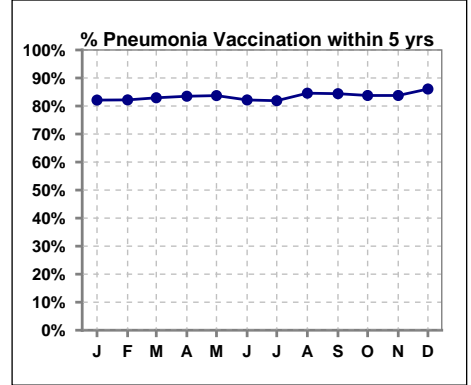
	Jan	Feb	Mar	Apr	May	Jun	Jul	Aug	Sep	Oct	Nov	Dec
# HgA1c	673			711			717			762		
# HgA1c < 7	426			486			497			498		
Pop. Mean	6.7			6.5			6.5			6.7		
Std. Deviation	1.21			1.20			1.19			1.42		
% HgA1c < 7	63%			68%			69%			65%		



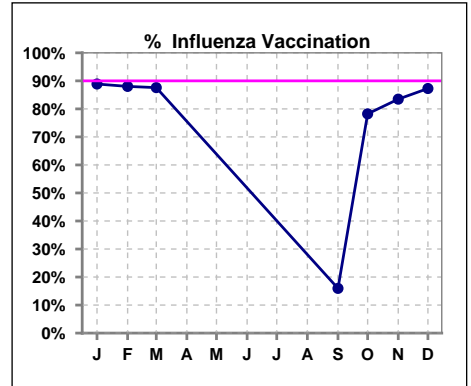
VII. Infection Control

Pneumonia vaccination within the past five years

	Jan	Feb	Mar	Apr	May	Jun	Jul	Aug	Sep	Oct	Nov	Dec
# Patient	1331	1353	1354	1345	1351	1368	1376	1388	1398	1392	1404	1407
# Pneumonia	1093	1112	1123	1123	1131	1124	1127	1174	1180	1166	1176	1211
% Pneumonia	82%	82%	83%	83%	84%	82%	82%	85%	84%	84%	84%	86%



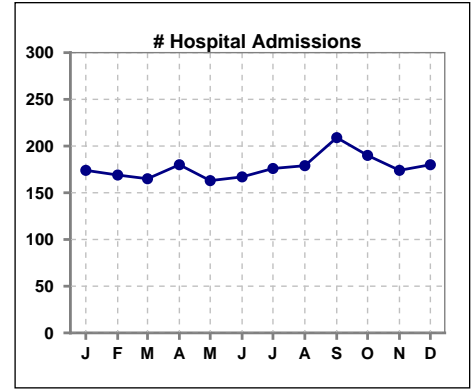
	Jan	Feb	Mar	Apr	May	Jun	Jul	Aug	Sep	Oct	Nov	Dec
# Patient	1331	1353	1354						1398	1392	1404	1407
# Influenza	1183	1191	1186						223	1089	1172	1228
% Influenza	89%	88%	88%						16%	78%	83%	87%



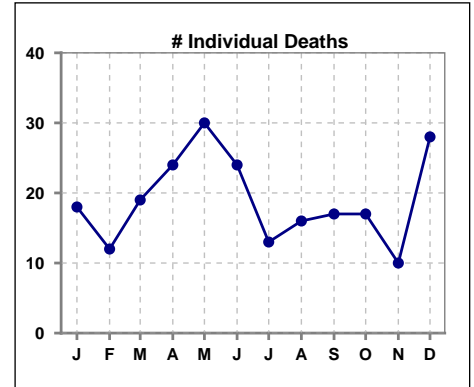
Methodology: a) All labs for 'Adequacy of Dialysis', 'Nutrition', 'Osteodystrophy', 'Anemia' and 'Diabetes' based on last value of month; b) BP's and #L processed are average of all values for month; c) Access data takes last access of month; d) Values for SGA and 'Infection Control' use most recent result.

VIII. Outcome measures

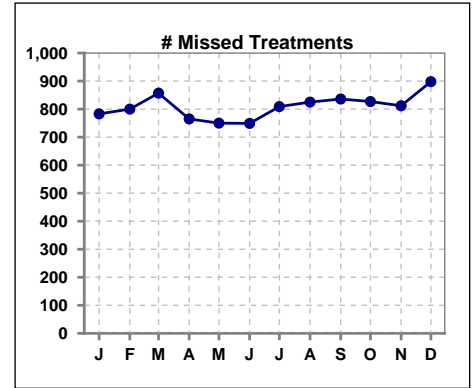
	Jan	Feb	Mar	Apr	May	Jun	Jul	Aug	Sep	Oct	Nov	Dec
# Patient	1331	1353	1354	1345	1351	1368	1376	1388	1398	1392	1404	1407
# Hospital Admissions	174	169	165	180	163	167	176	179	209	190	174	180



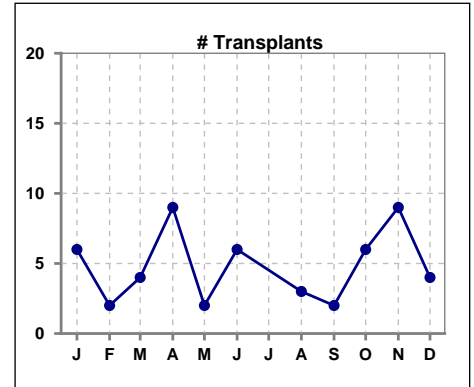
	Jan	Feb	Mar	Apr	May	Jun	Jul	Aug	Sep	Oct	Nov	Dec
# Patient	1331	1353	1354	1345	1351	1368	1376	1388	1398	1392	1404	1407
# Individual Deaths	18	12	19	24	30	24	13	16	17	17	10	28



	Jan	Feb	Mar	Apr	May	Jun	Jul	Aug	Sep	Oct	Nov	Dec
# Patient	1331	1353	1354	1345	1351	1368	1376	1388	1398	1392	1404	1407
# Missed Treatments	783	800	857	765	750	749	809	825	836	827	812	898



	Jan	Feb	Mar	Apr	May	Jun	Jul	Aug	Sep	Oct	Nov	Dec
# Patient	1331	1353	1354	1345	1351	1368	1376	1388	1398	1392	1404	1407
# Transplants	6	2	4	9	2	6		3	2	6	9	4



Methodology: a) All labs for 'Adequacy of Dialysis', 'Nutrition', 'Osteodystrophy', 'Anemia' and 'Diabetes' based on last value of month; b) BP's and #L processed are average of all values for month; c) Access data takes last access of month; d) Values for SGA and 'Infection Control' use most recent result.