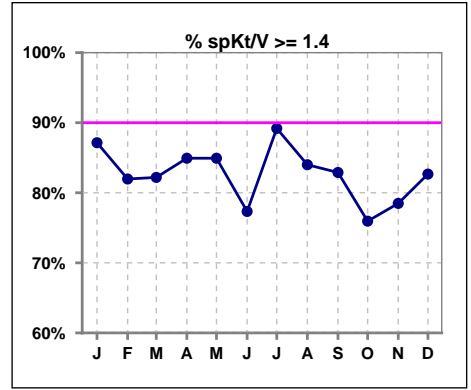
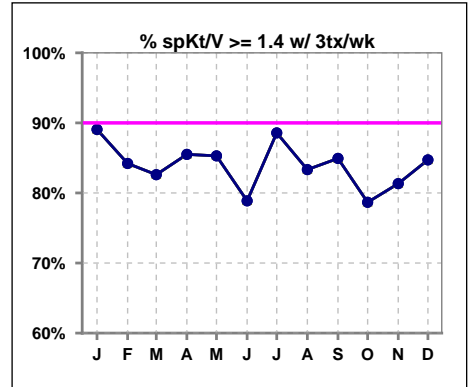


I. ADEQUACY OF DIALYSIS

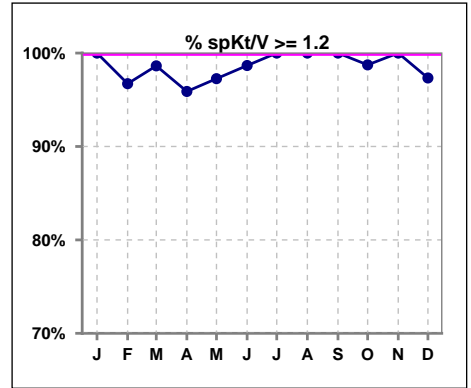
	Jan	Feb	Mar	Apr	May	Jun	Jul	Aug	Sep	Oct	Nov	Dec
# spKt/V	70	61	73	73	73	75	74	75	76	79	79	75
# spKt/V >= 1.4	61	50	60	62	62	58	66	63	63	60	62	62
Pop. Mean	1.67	1.64	1.65	1.66	1.65	1.69	1.71	1.66	1.66	1.59	1.66	1.68
Std. Deviation	0.26	0.30	0.29	0.30	0.31	0.35	0.29	0.28	0.31	0.31	0.34	0.32
% spKt/V >= 1.4	87%	82%	82%	85%	85%	77%	89%	84%	83%	76%	78%	83%



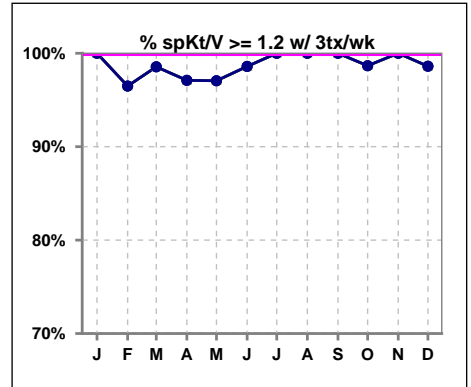
	Jan	Feb	Mar	Apr	May	Jun	Jul	Aug	Sep	Oct	Nov	Dec
# spKt/V w/ 3tx/wk	64	57	69	69	68	71	70	72	73	75	75	72
# spKt/V >= 1.4 w/3tx/wk	57	48	57	59	58	56	62	60	62	59	61	61
Pop. Mean	1.69	1.66	1.65	1.67	1.66	1.70	1.71	1.66	1.67	1.60	1.67	1.69
Std. Deviation	0.26	0.30	0.29	0.30	0.31	0.35	0.29	0.28	0.31	0.31	0.34	0.32
% >= 1.4 w/3tx/wk	89%	84%	83%	86%	85%	79%	89%	83%	85%	79%	81%	85%



	Jan	Feb	Mar	Apr	May	Jun	Jul	Aug	Sep	Oct	Nov	Dec
# spKt/V	70	61	73	73	73	75	74	75	76	79	79	75
# spKt/V >= 1.2	70	59	72	70	71	74	74	75	76	78	79	73
Pop. Mean	1.67	1.64	1.65	1.66	1.65	1.69	1.71	1.66	1.66	1.59	1.66	1.68
Std. Deviation	0.26	0.30	0.29	0.30	0.31	0.35	0.29	0.28	0.31	0.31	0.34	0.32
% spKt/V >= 1.2	100%	97%	99%	96%	97%	99%	100%	100%	100%	99%	100%	97%



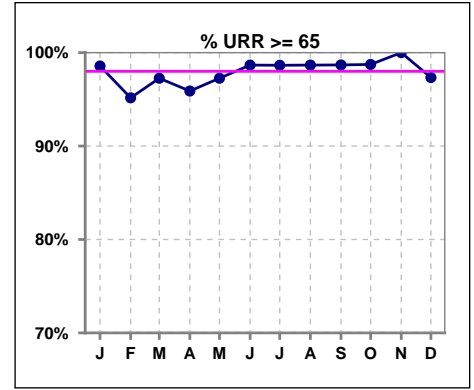
	Jan	Feb	Mar	Apr	May	Jun	Jul	Aug	Sep	Oct	Nov	Dec
# spKt/V w/ 3tx/wk	64	57	69	69	68	71	70	72	73	75	75	72
# spKt/V >= 1.2 w/3tx/wk	64	55	68	67	66	70	70	72	73	74	75	71
Pop. Mean	1.69	1.66	1.65	1.67	1.66	1.70	1.71	1.66	1.67	1.60	1.67	1.69
Std. Deviation	0.26	0.30	0.29	0.30	0.31	0.35	0.29	0.28	0.31	0.31	0.34	0.32
% >= 1.2 w/3tx/wk	100%	96%	99%	97%	97%	99%	100%	100%	100%	99%	100%	99%



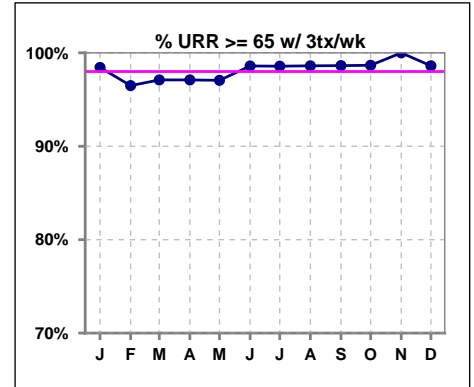
Methodology: a) All labs for 'Adequacy of Dialysis', 'Nutrition', 'Osteodystrophy', 'Anemia' and 'Diabetes' based on last value of month; b) BP's and #L processed are average of all values for month; c) Access data takes last access of month; d) Values for SGA and 'Infection Control' use most recent result.

I. ADEQUACY OF DIALYSIS - CONT.

	Jan	Feb	Mar	Apr	May	Jun	Jul	Aug	Sep	Oct	Nov	Dec
# URR	70	62	73	73	73	75	74	75	76	79	79	75
# URR >= 65	69	59	71	70	71	74	73	74	75	78	79	73
Pop. Mean	76	75	76	76	75	76	77	76	76	74	75	76
Std. Deviation	4.66	6.59	5.46	6.57	6.66	6.13	5.37	5.34	5.57	5.96	5.69	5.83
% URR >= 65	99%	95%	97%	96%	97%	99%	99%	99%	99%	99%	100%	97%



	Jan	Feb	Mar	Apr	May	Jun	Jul	Aug	Sep	Oct	Nov	Dec
# URR w/ 3tx/wk	64	57	69	69	68	71	70	72	73	75	75	72
# URR>=65 w/ 3tx/wk	63	55	67	67	66	70	69	71	72	74	75	71
Pop. Mean	76	76	76	76	76	76	77	76	76	75	76	76
Std. Deviation	4.66	5.88	5.43	6.56	6.74	6.06	5.44	5.41	5.50	5.97	5.66	5.74
% URR>=65 w/ 3tx/wk	98%	96%	97%	97%	97%	99%	99%	99%	99%	99%	100%	99%

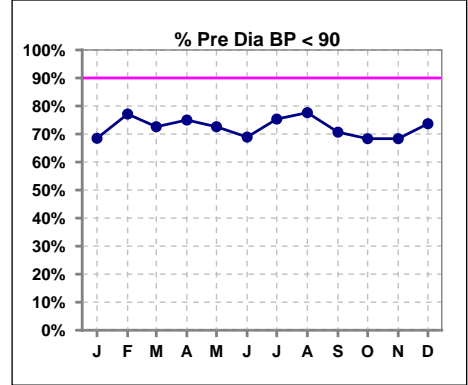


Methodology: a) All labs for 'Adequacy of Dialysis', 'Nutrition', 'Osteodystrophy', 'Anemia' and 'Diabetes' based on last value of month; b) BP's and #L processed are average of all values for month; c) Access data takes last access of month; d) Values for SGA and 'Infection Control' use most recent result.

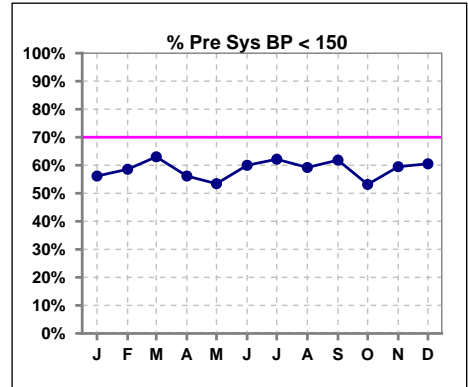
I. ADEQUACY OF DIALYSIS - CONT.

Blood Pressure Control (Pre)

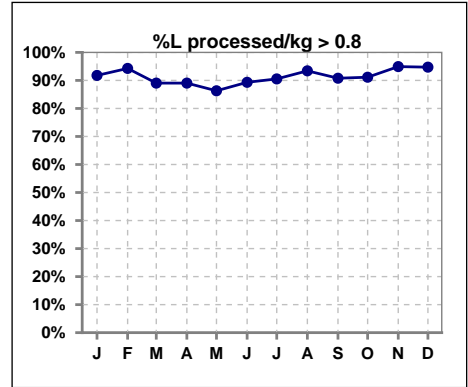
	Jan	Feb	Mar	Apr	May	Jun	Jul	Aug	Sep	Oct	Nov	Dec
# Pre Dia BP	73	70	73	72	73	74	73	76	75	79	79	76
# Pre Dia BP < 90	50	54	53	54	53	51	55	59	53	54	54	56
Pop. Mean	80	79	79	79	79	80	78	79	80	80	80	80
Std. Deviation	14.3	13.8	14.8	14.0	15.0	15.0	14.1	13.9	13.9	14.2	14.5	13.3
% Pre Dia BP < 90	68%	77%	73%	75%	73%	69%	75%	78%	71%	68%	68%	74%



	Jan	Feb	Mar	Apr	May	Jun	Jul	Aug	Sep	Oct	Nov	Dec
# Pre Sys BP	73	70	73	73	73	75	74	76	76	79	79	76
# Pre Sys BP < 150	41	41	46	41	39	45	46	45	47	42	47	46
Pop. Mean	146	144	144	145	144	146	143	143	145	146	145	146
Std. Deviation	23.8	23.6	24.7	25.1	25.2	24.6	24.5	23.5	26.0	23.1	25.3	23.7
%Pre Sys BP <150	56%	59%	63%	56%	53%	60%	62%	59%	62%	53%	59%	61%



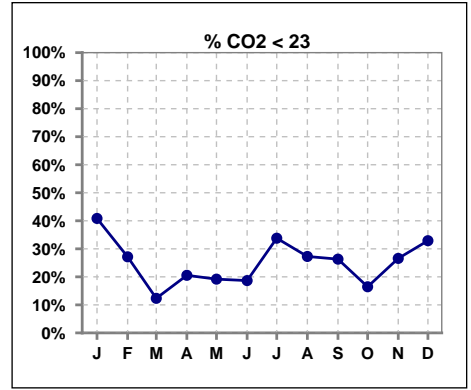
	Jan	Feb	Mar	Apr	May	Jun	Jul	Aug	Sep	Oct	Nov	Dec
# L processed/kg	73	70	73	73	73	75	74	76	76	79	79	76
# L processed/kg>0.8	67	66	65	65	63	67	67	71	69	72	75	72
Pop. Mean	1	1	1	1	1	1	1	1	1	1	1	1
Std. Deviation	0.3	0.3	0.3	0.3	0.3	0.3	0.3	0.3	0.3	0.3	0.3	0.3
% L processed/kg>0.8	92%	94%	89%	89%	86%	89%	91%	93%	91%	91%	95%	95%



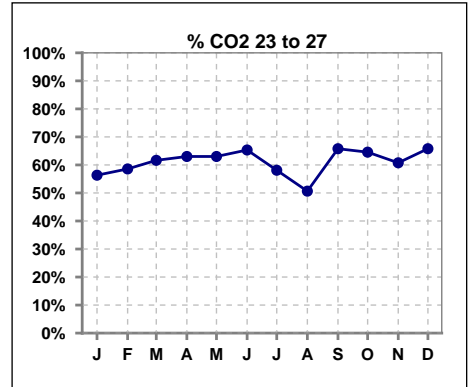
Methodology: a) All labs for 'Adequacy of Dialysis', 'Nutrition', 'Osteodystrophy', 'Anemia' and 'Diabetes' based on last value of month; b) BP's and #L processed are average of all values for month; c) Access data takes last access of month; d) Values for SGA and 'Infection Control' use most recent result.

I. ADEQUACY OF DIALYSIS - CONT.

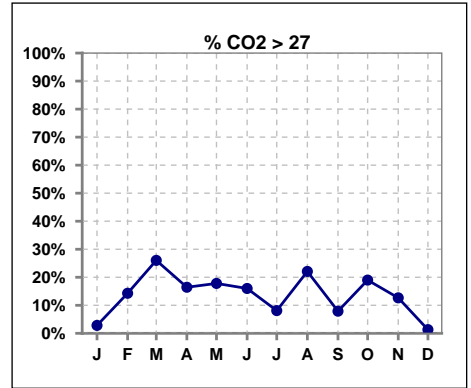
	Jan	Feb	Mar	Apr	May	Jun	Jul	Aug	Sep	Oct	Nov	Dec
# CO2	71	70	73	73	73	75	74	77	76	79	79	76
# CO2 < 23	29	19	9	15	14	14	25	21	20	13	21	25
Pop. Mean	23	24	26	25	25	25	23	25	24	25	24	23
Std. Deviation	2.60	2.65	3.15	3.01	2.75	2.80	3.56	2.95	2.88	2.88	3.10	2.64
% CO2 < 23	41%	27%	12%	21%	19%	19%	34%	27%	26%	16%	27%	33%



	Jan	Feb	Mar	Apr	May	Jun	Jul	Aug	Sep	Oct	Nov	Dec
# CO2	71	70	73	73	73	75	74	77	76	79	79	76
# CO2 23 to 27	40	41	45	46	46	49	43	39	50	51	48	50
Pop. Mean	23	24	26	25	25	25	23	25	24	25	24	23
Std. Deviation	2.60	2.65	3.15	3.01	2.75	2.80	3.56	2.95	2.88	2.88	3.10	2.64
% CO2 23 to 27	56%	59%	62%	63%	63%	65%	58%	51%	66%	65%	61%	66%



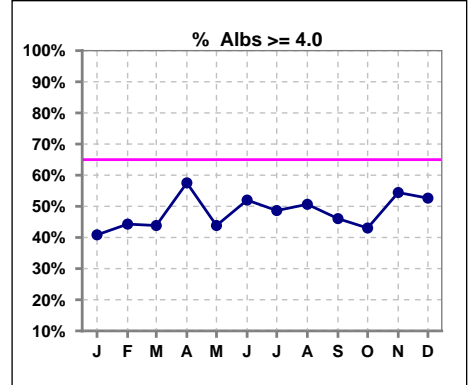
	Jan	Feb	Mar	Apr	May	Jun	Jul	Aug	Sep	Oct	Nov	Dec
# CO2	71	70	73	73	73	75	74	77	76	79	79	76
# CO2 > 27	2	10	19	12	13	12	6	17	6	15	10	1
Pop. Mean	23	24	26	25	25	25	23	25	24	25	24	23
Std. Deviation	2.60	2.65	3.15	3.01	2.75	2.80	3.56	2.95	2.88	2.88	3.10	2.64
% CO2 > 27	3%	14%	26%	16%	18%	16%	8%	22%	8%	19%	13%	1%



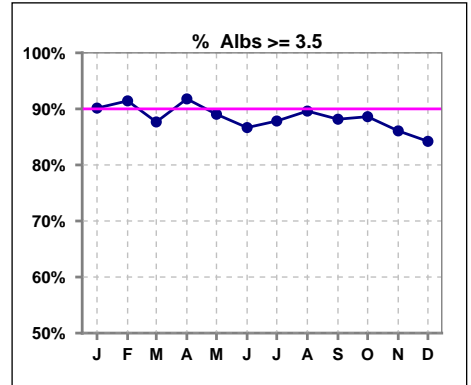
*Albumin values use BCG method - as of July 2001

II. NUTRITION

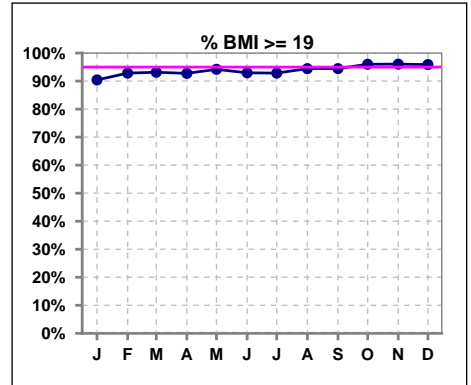
	Jan	Feb	Mar	Apr	May	Jun	Jul	Aug	Sep	Oct	Nov	Dec
# Albumin	71	70	73	73	73	75	74	77	76	79	79	76
# Albumin >= 4.0	29	31	32	42	32	39	36	39	35	34	43	40
Pop. Mean	3.9	3.9	3.9	3.9	3.9	3.9	3.9	3.9	3.9	3.9	3.9	4.0
Std. Deviation	0.42	0.34	0.35	0.34	0.36	0.40	0.35	0.37	0.41	0.42	0.47	0.44
% Alb >= 4.0	41%	44%	44%	58%	44%	52%	49%	51%	46%	43%	54%	53%



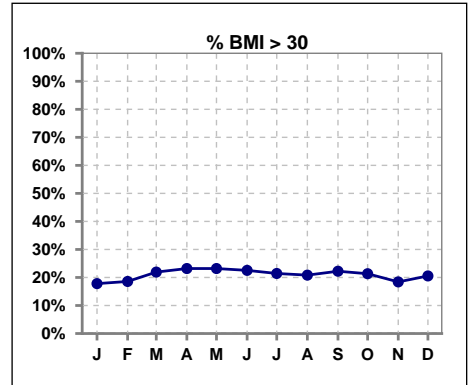
	Jan	Feb	Mar	Apr	May	Jun	Jul	Aug	Sep	Oct	Nov	Dec
# Albumin	71	70	73	73	73	75	74	77	76	79	79	76
# Albumin >= 3.5	64	64	64	67	65	65	65	69	67	70	68	64
Pop. Mean	3.9	3.9	3.9	3.9	3.9	3.9	3.9	3.9	3.9	3.9	3.9	4.0
Std. Deviation	0.42	0.34	0.35	0.34	0.36	0.40	0.35	0.37	0.41	0.42	0.47	0.44
% Alb >= 3.5	90%	91%	88%	92%	89%	87%	88%	90%	88%	89%	86%	84%



	Jan	Feb	Mar	Apr	May	Jun	Jul	Aug	Sep	Oct	Nov	Dec
# BMI	73	70	73	69	69	71	70	72	72	75	76	73
# BMI >= 19	66	65	68	64	65	66	65	68	68	72	73	70
Pop. Mean	26	26	27	27	27	27	26	26	26	27	26	27
Std. Deviation	5.7	5.7	5.9	6.2	6.2	6.2	6.1	6.0	6.0	5.9	5.6	5.8
% BMI >= 19	90%	93%	93%	93%	94%	93%	93%	94%	94%	96%	96%	96%



	Jan	Feb	Mar	Apr	May	Jun	Jul	Aug	Sep	Oct	Nov	Dec
# BMI	73	70	73	69	69	71	70	72	72	75	76	73
# BMI > 30	13	13	16	16	16	16	15	15	16	16	14	15
Pop. Mean	26	26	27	27	27	27	26	26	26	27	26	27
Std. Deviation	5.7	5.7	5.9	6.2	6.2	6.2	6.1	6.0	6.0	5.9	5.6	5.8
% BMI > 30	18%	19%	22%	23%	23%	23%	21%	21%	22%	21%	18%	21%

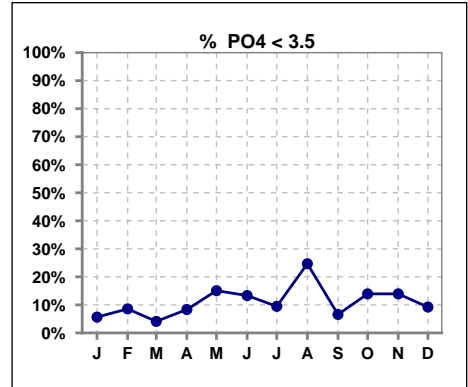


Methodology: a) All labs for 'Adequacy of Dialysis', 'Nutrition', 'Osteodystrophy', 'Anemia' and 'Diabetes' based on last value of month; b) BP's and #L processed are average of all values for month; c) Access data takes last access of month; d) Values for SGA and 'Infection Control' use most recent result.

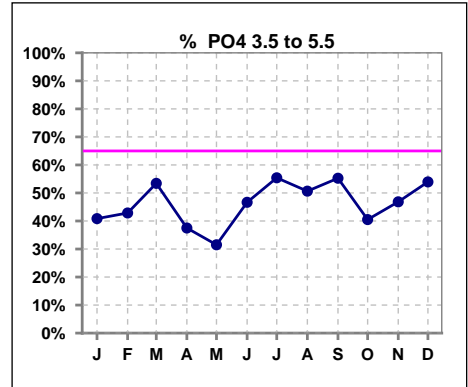
Lab methodology for PTH changed January 2012

III. OSTEODYSTROPHY

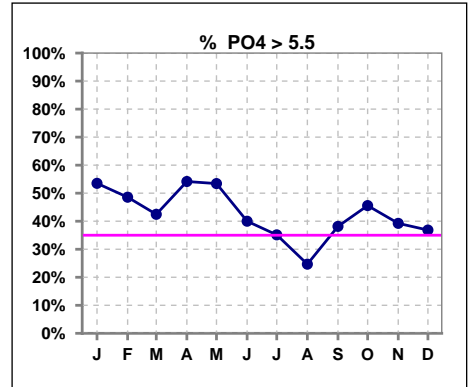
	Jan	Feb	Mar	Apr	May	Jun	Jul	Aug	Sep	Oct	Nov	Dec
# PO4	71	70	73	72	73	75	74	77	76	79	79	76
# PO4 < 3.5	4	6	3	6	11	10	7	19	5	11	11	7
Pop. Mean	5.7	5.8	5.6	5.7	5.8	5.4	5.5	4.7	5.5	5.5	5.5	5.5
Std. Deviation	1.53	1.87	1.80	1.69	2.07	2.09	1.86	1.68	1.77	1.98	2.01	1.86
% PO4 < 3.5	6%	9%	4%	8%	15%	13%	9%	25%	7%	14%	14%	9%



	Jan	Feb	Mar	Apr	May	Jun	Jul	Aug	Sep	Oct	Nov	Dec
# PO4	71	70	73	72	73	75	74	77	76	79	79	76
# PO4 3.5 to 5.5	29	30	39	27	23	35	41	39	42	32	37	41
Pop. Mean	5.7	5.8	5.6	5.7	5.8	5.4	5.5	4.7	5.5	5.5	5.5	5.5
Std. Deviation	1.53	1.87	1.80	1.69	2.07	2.09	1.86	1.68	1.77	1.98	2.01	1.86
% PO4 3.5 to 5.5	41%	43%	53%	38%	32%	47%	55%	51%	55%	41%	47%	54%



	Jan	Feb	Mar	Apr	May	Jun	Jul	Aug	Sep	Oct	Nov	Dec
# PO4	71	70	73	72	73	75	74	77	76	79	79	76
# PO4 > 5.5	38	34	31	39	39	30	26	19	29	36	31	28
Pop. Mean	5.7	5.8	5.6	5.7	5.8	5.4	5.5	4.7	5.5	5.5	5.5	5.5
Std. Deviation	1.53	1.87	1.80	1.69	2.07	2.09	1.86	1.68	1.77	1.98	2.01	1.86
% PO4 > 5.5	54%	49%	42%	54%	53%	40%	35%	25%	38%	46%	39%	37%

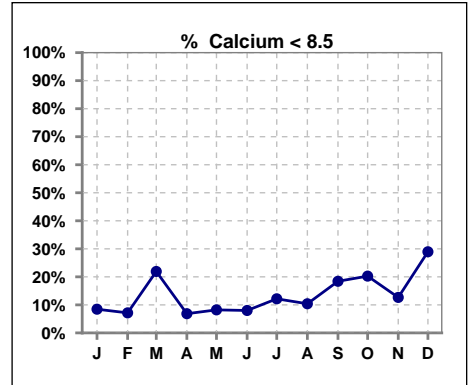


Methodology: a) All labs for 'Adequacy of Dialysis', 'Nutrition', 'Osteodystrophy', 'Anemia' and 'Diabetes' based on last value of month; b) BP's and #L processed are average of all values for month; c) Access data takes last access of month; d) Values for SGA and 'Infection Control' use most recent result.

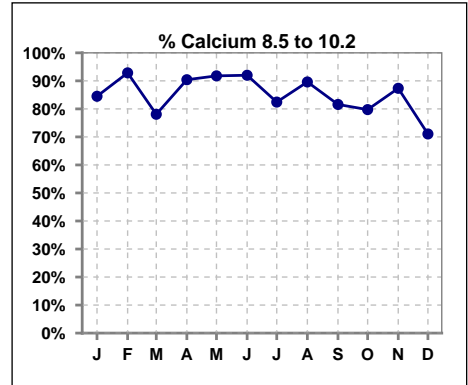
Lab methodology for PTH changed January 2012

III. OSTEODYSTROPHY - CONT.

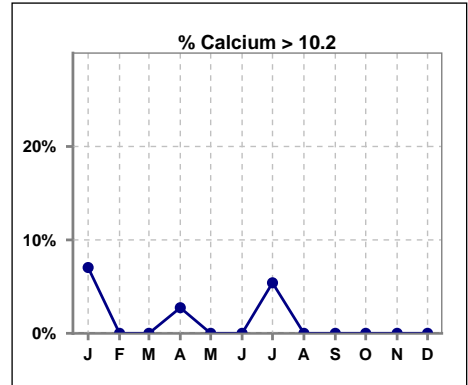
	Jan	Feb	Mar	Apr	May	Jun	Jul	Aug	Sep	Oct	Nov	Dec
# Calcium	71	70	73	73	73	75	74	77	76	79	79	76
# Calcium < 8.5	6	5	16	5	6	6	9	8	14	16	10	22
Pop. Mean	9.4	9.3	9.0	9.2	9.2	9.2	9.3	9.2	9.1	9.2	9.1	8.8
Std. Deviation	0.84	0.60	0.74	0.64	0.69	0.74	0.70	0.67	0.67	0.68	0.72	0.72
% Calcium < 8.5	8%	7%	22%	7%	8%	8%	12%	10%	18%	20%	13%	29%



	Jan	Feb	Mar	Apr	May	Jun	Jul	Aug	Sep	Oct	Nov	Dec
# Calcium	71	70	73	73	73	75	74	77	76	79	79	76
# Calcium 8.5 to 10.2	60	65	57	66	67	69	61	69	62	63	69	54
Pop. Mean	9.4	9.3	9.0	9.2	9.2	9.2	9.3	9.2	9.1	9.2	9.1	8.8
Std. Deviation	0.84	0.60	0.74	0.64	0.69	0.74	0.70	0.67	0.67	0.68	0.72	0.72
% Calcium 8.5 to 10.2	85%	93%	78%	90%	92%	92%	82%	90%	82%	80%	87%	71%



	Jan	Feb	Mar	Apr	May	Jun	Jul	Aug	Sep	Oct	Nov	Dec
# Calcium	71	70	73	73	73	75	74	77	76	79	79	76
# Calcium > 10.2	5	0	0	2	0	0	4	0	0	0	0	0
Pop. Mean	9.4	9.3	9.0	9.2	9.2	9.2	9.3	9.2	9.1	9.2	9.1	8.8
Std. Deviation	0.84	0.60	0.74	0.64	0.69	0.74	0.70	0.67	0.67	0.68	0.72	0.72
% Calcium > 10.2	7%	0%	0%	3%	0%	0%	5%	0%	0%	0%	0%	0%

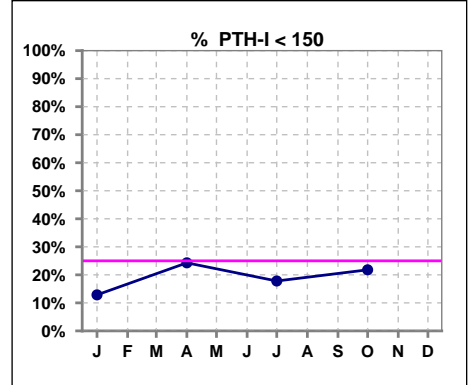


Methodology: a) All labs for 'Adequacy of Dialysis', 'Nutrition', 'Osteodystrophy', 'Anemia' and 'Diabetes' based on last value of month; b) BP's and #L processed are average of all values for month; c) Access data takes last access of month; d) Values for SGA and 'Infection Control' use most recent result.

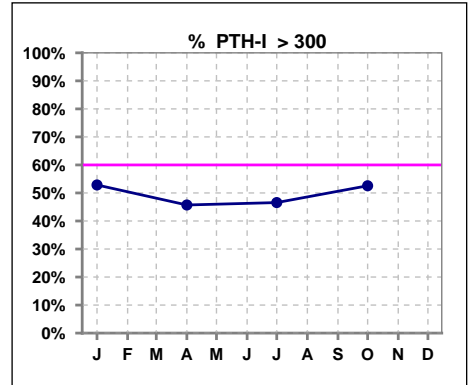
Lab methodology for PTH changed January 2012

III. OSTEODYSTROPHY - CONT.

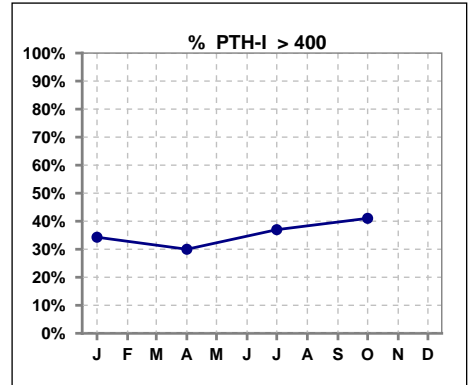
	Jan	Feb	Mar	Apr	May	Jun	Jul	Aug	Sep	Oct	Nov	Dec
# PTH-I	70			70			73			78		
# PTH-I < 150	9			17			13			17		
Pop. Mean	374			394			381			401		
Std. Deviation	254			367			302			318		
% PTH-I < 150	13%			24%			18%			22%		



	Jan	Feb	Mar	Apr	May	Jun	Jul	Aug	Sep	Oct	Nov	Dec
# PTH-I	70			70			73			78		
# PTH-I > 300	37			32			34			41		
Pop. Mean	374			394			381			401		
Std. Deviation	254			367			302			318		
% PTH-I > 300	53%			46%			47%			53%		



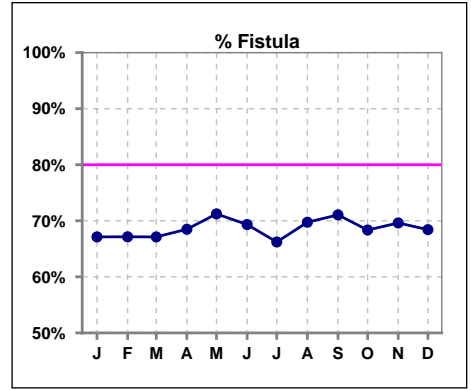
	Jan	Feb	Mar	Apr	May	Jun	Jul	Aug	Sep	Oct	Nov	Dec
# PTH-I	70			70			73			78		
# PTH-I > 400	24			21			27			32		
Pop. Mean	374			394			381			401		
Std. Deviation	254			367			302			318		
% PTH-I > 400	34%			30%			37%			41%		



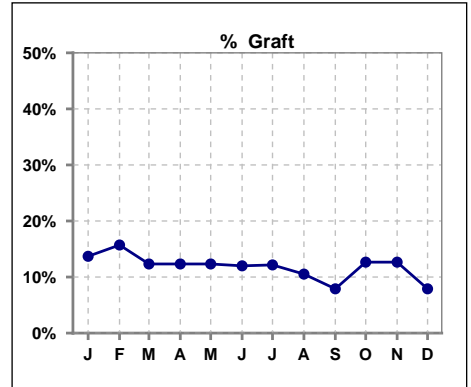
Methodology: a) All labs for 'Adequacy of Dialysis', 'Nutrition', 'Osteodystrophy', 'Anemia' and 'Diabetes' based on last value of month; b) BP's and #L processed are average of all values for month; c) Access data takes last access of month; d) Values for SGA and 'Infection Control' use most recent result.

IV. ACCESS

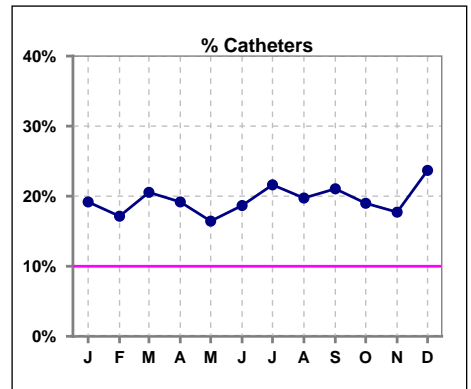
	Jan	Feb	Mar	Apr	May	Jun	Jul	Aug	Sep	Oct	Nov	Dec
# Access	73	70	73	73	73	75	74	76	76	79	79	76
# Fistula	49	47	49	50	52	52	49	53	54	54	55	52
% Fistula	67%	67%	67%	68%	71%	69%	66%	70%	71%	68%	70%	68%



	Jan	Feb	Mar	Apr	May	Jun	Jul	Aug	Sep	Oct	Nov	Dec
# Access	73	70	73	73	73	75	74	76	76	79	79	76
# Graft	10	11	9	9	9	9	9	8	6	10	10	6
% Graft	14%	16%	12%	12%	12%	12%	12%	11%	8%	13%	13%	8%



	Jan	Feb	Mar	Apr	May	Jun	Jul	Aug	Sep	Oct	Nov	Dec
# Access	73	70	73	73	73	75	74	76	76	79	79	76
# Catheters	14	12	15	14	12	14	16	15	16	15	14	18
% Catheters	19%	17%	21%	19%	16%	19%	22%	20%	21%	19%	18%	24%



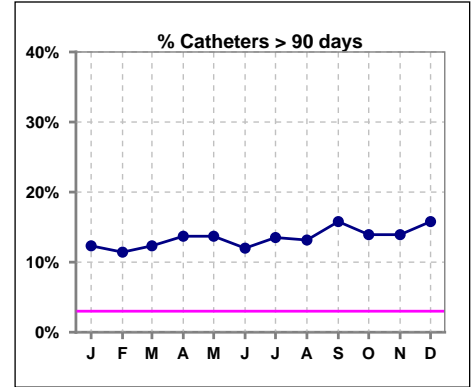
Methodology: a) All labs for 'Adequacy of Dialysis', 'Nutrition', 'Osteodystrophy', 'Anemia' and 'Diabetes' based on last value of month; b) BP's and #L processed are average of all values for month; c) Access data takes last access of month; d) Values for SGA and 'Infection Control' use most recent result.

IV. ACCESS - CONT.

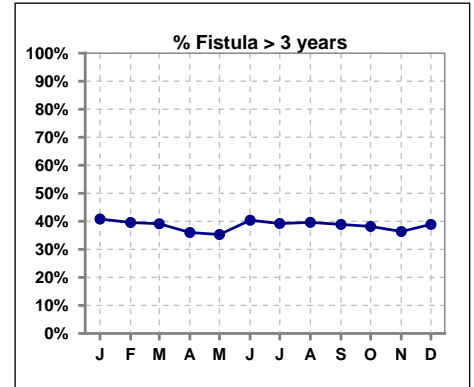
Catheters > 90 days

	Jan	Feb	Mar	Apr	May	Jun	Jul	Aug	Sep	Oct	Nov	Dec
# Access	73	70	73	73	73	75	74	76	76	79	79	76
# Catheters	9	8	9	10	10	9	10	10	12	11	11	12
% Catheters	12%	11%	12%	14%	14%	12%	14%	13%	16%	14%	14%	16%

Definition: Catheter in use on last treatment of the month



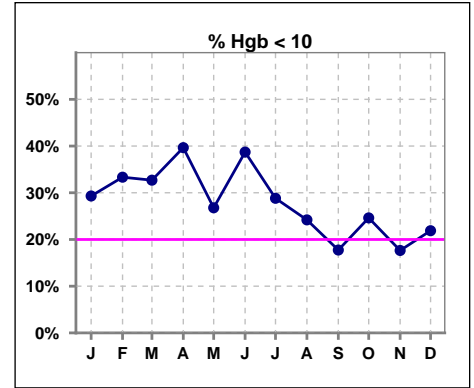
	Jan	Feb	Mar	Apr	May	Jun	Jul	Aug	Sep	Oct	Nov	Dec
# Fistula	49	48	46	50	51	52	51	53	54	55	55	54
# Fistula > 3 yrs	20	19	18	18	18	21	20	21	21	21	20	21
% Fistula > 3 yrs	41%	40%	39%	36%	35%	40%	39%	40%	39%	38%	36%	39%



V. ANEMIA

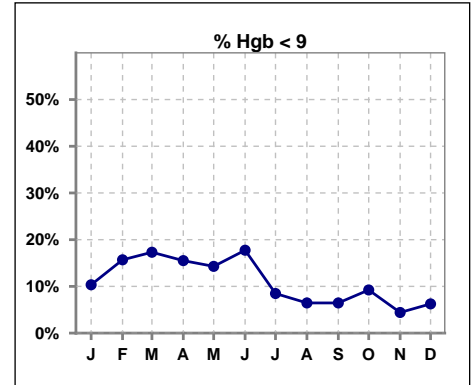
	Jan	Feb	Mar	Apr	May	Jun	Jul	Aug	Sep	Oct	Nov	Dec
# Hgb	58	51	52	58	56	62	59	62	62	65	68	64
# Hgb < 10	17	17	17	23	15	24	17	15	11	16	12	14
Pop. Mean	10.4	10.3	10.4	10.3	10.5	10.3	10.5	10.6	10.8	10.5	10.8	10.7
Std. Deviation	1.1	1.3	1.3	1.3	1.5	1.4	1.2	1.1	1.1	1.0	1.1	1.2
% Hgb < 10	29%	33%	33%	40%	27%	39%	29%	24%	18%	25%	18%	22%

Note: Excludes patients who received no ESA in month.



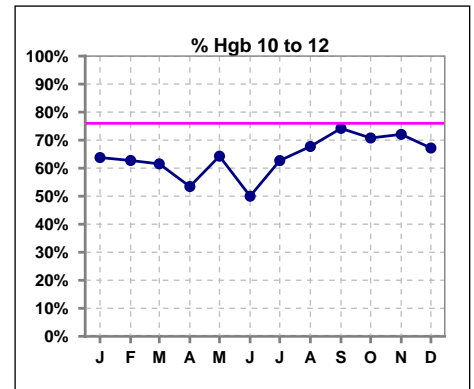
	Jan	Feb	Mar	Apr	May	Jun	Jul	Aug	Sep	Oct	Nov	Dec
# Hgb	58	51	52	58	56	62	59	62	62	65	68	64
# Hgb < 9	6	8	9	9	8	11	5	4	4	6	3	4
Pop. Mean	10.4	10.3	10.4	10.3	10.5	10.3	10.5	10.6	10.8	10.5	10.8	10.7
Std. Deviation	1.1	1.3	1.3	1.3	1.5	1.4	1.2	1.1	1.1	1.0	1.1	1.2
% Hgb < 9	10%	16%	17%	16%	14%	18%	8%	6%	6%	9%	4%	6%

Note: Excludes patients who received no ESA in month.



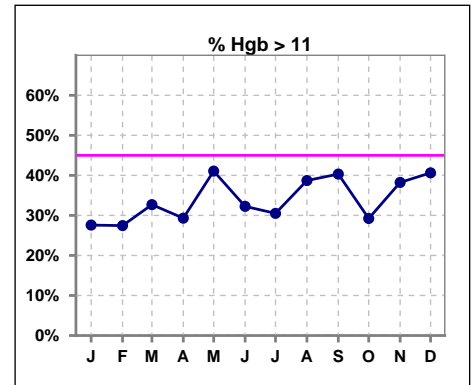
	Jan	Feb	Mar	Apr	May	Jun	Jul	Aug	Sep	Oct	Nov	Dec
# Hgb	58	51	52	58	56	62	59	62	62	65	68	64
# Hgb 10 to 12	37	32	32	31	36	31	37	42	46	46	49	43
Pop. Mean	10.4	10.3	10.4	10.3	10.5	10.3	10.5	10.6	10.8	10.5	10.8	10.7
Std. Deviation	1.1	1.3	1.3	1.3	1.5	1.4	1.2	1.1	1.1	1.0	1.1	1.2
% Hgb 10 to 12	64%	63%	62%	53%	64%	50%	63%	68%	74%	71%	72%	67%

Note: Excludes patients who received no ESA in month.



	Jan	Feb	Mar	Apr	May	Jun	Jul	Aug	Sep	Oct	Nov	Dec
# Hgb	58	51	52	58	56	62	59	62	62	65	68	64
# Hgb > 11	16	14	17	17	23	20	18	24	25	19	26	26
Pop. Mean	10.4	10.3	10.4	10.3	10.5	10.3	10.5	10.6	10.8	10.5	10.8	10.7
Std. Deviation	1.1	1.3	1.3	1.3	1.5	1.4	1.2	1.1	1.1	1.0	1.1	1.2
% Hgb > 11	28%	27%	33%	29%	41%	32%	31%	39%	40%	29%	38%	41%

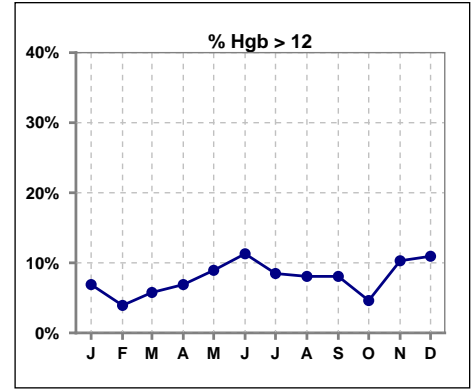
Note: Excludes patients who received no ESA in month.



V. ANEMIA - CONT.

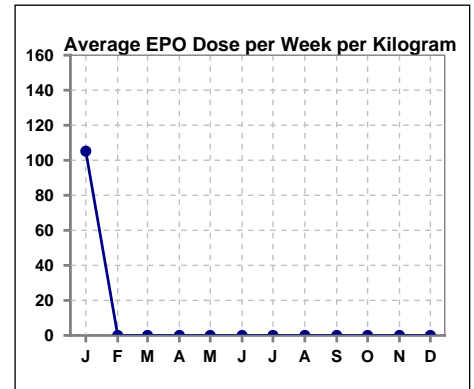
	Jan	Feb	Mar	Apr	May	Jun	Jul	Aug	Sep	Oct	Nov	Dec
# Hgb	58	51	52	58	56	62	59	62	62	65	68	64
# Hgb > 12	4	2	3	4	5	7	5	5	5	3	7	7
Pop. Mean	10.4	10.3	10.4	10.3	10.5	10.3	10.5	10.6	10.8	10.5	10.8	10.7
Std. Deviation	1.1	1.3	1.3	1.3	1.5	1.4	1.2	1.1	1.1	1.0	1.1	1.2
% Hgb > 12	7%	4%	6%	7%	9%	11%	8%	8%	8%	5%	10%	11%

Note: Excludes patients who received no ESA in month.



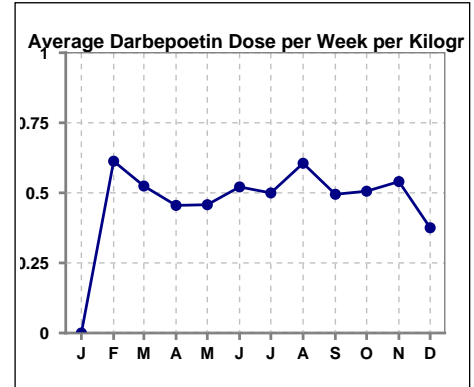
Average EPO Dose per Week per Kilogram

	Jan	Feb	Mar	Apr	May	Jun	Jul	Aug	Sep	Oct	Nov	Dec
# Average EPO	105.2	0	0	0	0	0	0	0	0	0	0	0



Average Darbepoetin Dose per Week per Kilogram

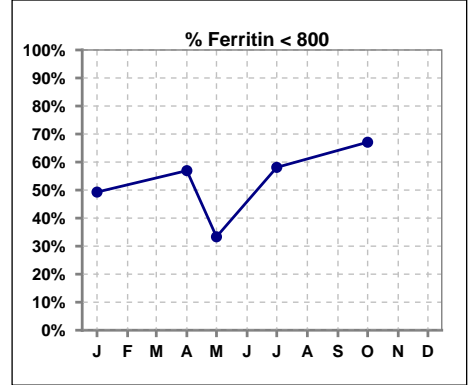
	Jan	Feb	Mar	Apr	May	Jun	Jul	Aug	Sep	Oct	Nov	Dec
# Average Darbepoetin	0	.6	.5	.5	.5	.5	.5	.6	.5	.5	.5	.4



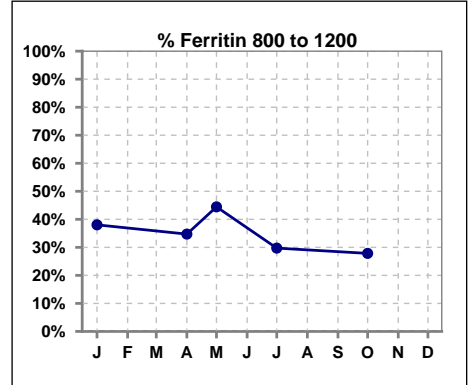
V. ANEMIA - CONT.

Iron Profile

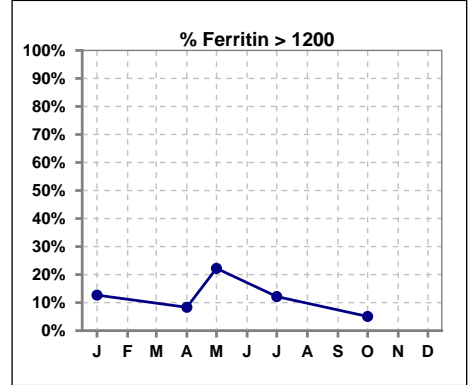
	Jan	Feb	Mar	Apr	May	Jun	Jul	Aug	Sep	Oct	Nov	Dec
# Ferritin	71			72	18		74			79		
# Ferritin < 800	35			41	6		43			53		
Pop. Mean	817			768	956		769			707		
Std. Deviation	367			362	341		344			325		
% Ferritin < 800	49%			57%	33%		58%			67%		



	Jan	Feb	Mar	Apr	May	Jun	Jul	Aug	Sep	Oct	Nov	Dec
# Ferritin	71			72	18		74			79		
# Ferritin 800 to 1200	27			25	8		22			22		
Pop. Mean	817			768	956		769			707		
Std. Deviation	367			362	341		344			325		
% Ferritin 800 to 1200	38%			35%	44%		30%			28%		

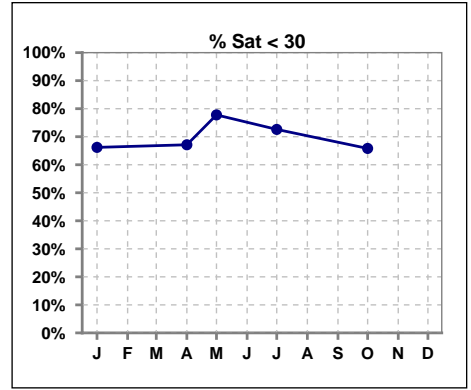


	Jan	Feb	Mar	Apr	May	Jun	Jul	Aug	Sep	Oct	Nov	Dec
# Ferritin	71			72	18		74			79		
# Ferritin > 1200	9			6	4		9			4		
Pop. Mean	817			768	956		769			707		
Std. Deviation	367			362	341		344			325		
% Ferritin > 1200	13%			8%	22%		12%			5%		

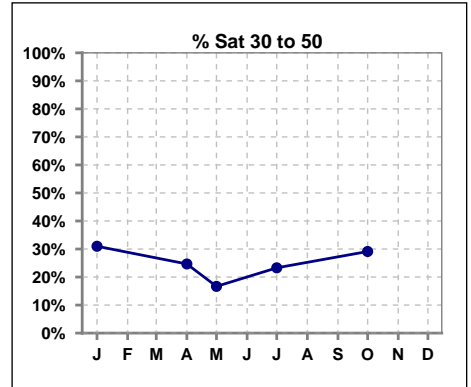


V. ANEMIA - CONT.

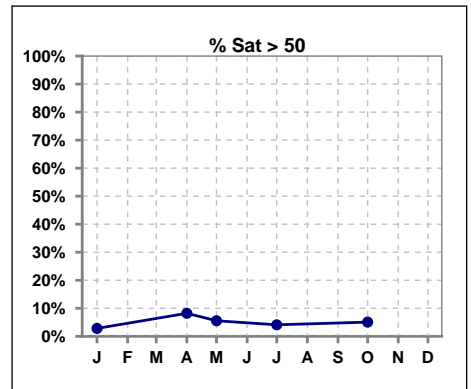
	Jan	Feb	Mar	Apr	May	Jun	Jul	Aug	Sep	Oct	Nov	Dec
# % Sat	71			73	18		73			79		
# % Sat < 30	47			49	14		53			52		
Pop. Mean	28			28	25		26			28		
Std. Deviation	13			17	12		15			15		
% % Sat < 30	66%			67%	78%		73%			66%		



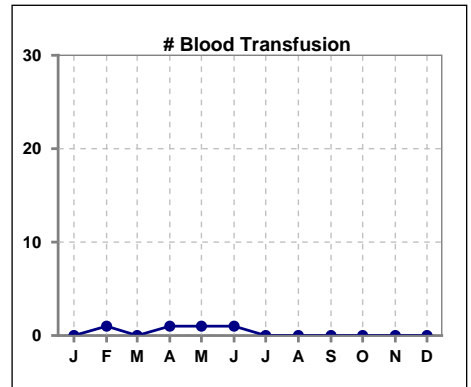
	Jan	Feb	Mar	Apr	May	Jun	Jul	Aug	Sep	Oct	Nov	Dec
# % Sat	71			73	18		73			79		
# % Sat 30 to 50	22			18	3		17			23		
Pop. Mean	28			28	25		26			28		
Std. Deviation	13			17	12		15			15		
% % Sat 30 to 50	31%			25%	17%		23%			29%		



	Jan	Feb	Mar	Apr	May	Jun	Jul	Aug	Sep	Oct	Nov	Dec
# % Sat	71			73	18		73			79		
# % Sat > 50	2			6	1		3			4		
Pop. Mean	28			28	25		26			28		
Std. Deviation	13			17	12		15			15		
% % Sat > 50	3%			8%	6%		4%			5%		



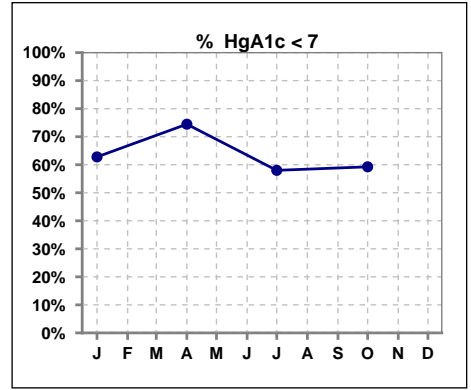
	Jan	Feb	Mar	Apr	May	Jun	Jul	Aug	Sep	Oct	Nov	Dec
# Patient	74	71	74	73	73	75	75	78	77	79	80	78
# Blood Transfusion	0	1	0	1	1	1	0	0	0	0	0	0



Methodology: a) All labs for 'Adequacy of Dialysis', 'Nutrition', 'Osteodystrophy', 'Anemia' and 'Diabetes' based on last value of month; b) BP's and #L processed are average of all values for month; c) Access data takes last access of month; d) Values for SGA and 'Infection Control' use most recent result.

VI. Diabetes

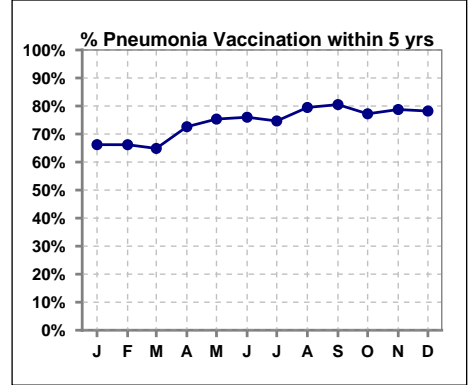
	Jan	Feb	Mar	Apr	May	Jun	Jul	Aug	Sep	Oct	Nov	Dec
# HgA1c	43			47			50			54		
# HgA1c < 7	27			35			29			32		
Pop. Mean	6.5			6.4			6.4			6.6		
Std. Deviation	1.01			1.29			1.29			1.30		
% HgA1c < 7	63%			74%			58%			59%		



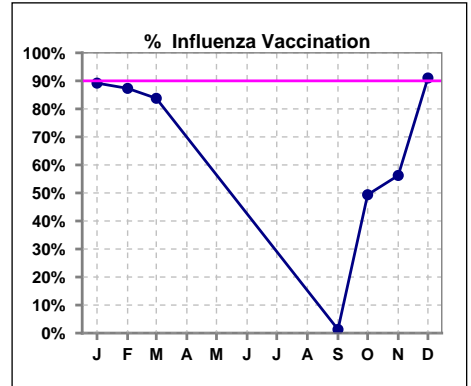
VII. Infection Control

Pneumonia vaccination within the past five years

	Jan	Feb	Mar	Apr	May	Jun	Jul	Aug	Sep	Oct	Nov	Dec
# Patient	74	71	74	73	73	75	75	78	77	79	80	78
# Pneumonia	49	47	48	53	55	57	56	62	62	61	63	61
% Pneumonia	66%	66%	65%	73%	75%	76%	75%	79%	81%	77%	79%	78%



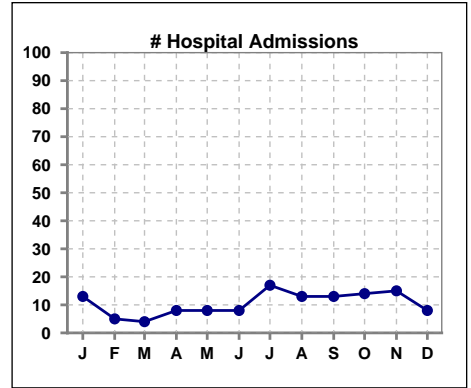
	Jan	Feb	Mar	Apr	May	Jun	Jul	Aug	Sep	Oct	Nov	Dec
# Patient	74	71	74						77	79	80	78
# Influenza	66	62	62						1	39	45	71
% Influenza	89%	87%	84%						1%	49%	56%	91%



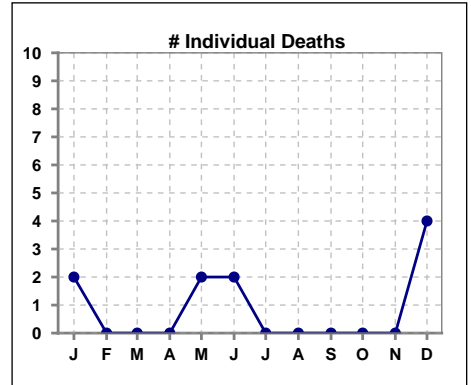
Methodology: a) All labs for 'Adequacy of Dialysis', 'Nutrition', 'Osteodystrophy', 'Anemia' and 'Diabetes' based on last value of month; b) BP's and #L processed are average of all values for month; c) Access data takes last access of month; d) Values for SGA and 'Infection Control' use most recent result.

VIII. Outcome measures

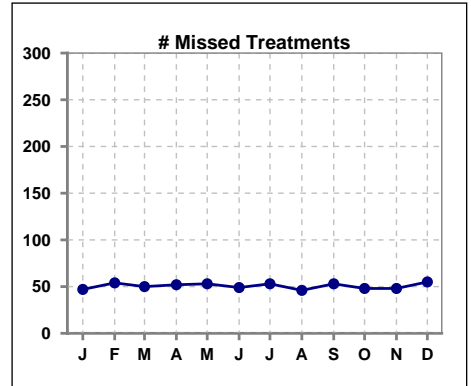
	Jan	Feb	Mar	Apr	May	Jun	Jul	Aug	Sep	Oct	Nov	Dec
# Patient	74	71	74	73	73	75	75	78	77	79	80	78
# Hospital Admissions	13	5	4	8	8	8	17	13	13	14	15	8



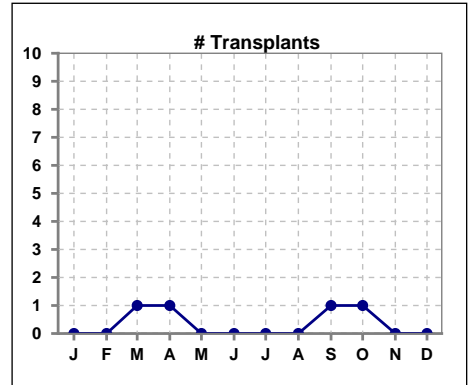
	Jan	Feb	Mar	Apr	May	Jun	Jul	Aug	Sep	Oct	Nov	Dec
# Patient	74	71	74	73	73	75	75	78	77	79	80	78
# Individual Deaths	2	0	0	0	2	2	0	0	0	0	0	4



	Jan	Feb	Mar	Apr	May	Jun	Jul	Aug	Sep	Oct	Nov	Dec
# Patient	74	71	74	73	73	75	75	78	77	79	80	78
# Missed Treatments	47	54	50	52	53	49	53	46	53	48	48	55



	Jan	Feb	Mar	Apr	May	Jun	Jul	Aug	Sep	Oct	Nov	Dec
# Patient	74	71	74	73	73	75	75	78	77	79	80	78
# Transplants	0	0	1	1	0	0	0	0	1	1	0	0



Methodology: a) All labs for 'Adequacy of Dialysis', 'Nutrition', 'Osteodystrophy', 'Anemia' and 'Diabetes' based on last value of month; b) BP's and #L processed are average of all values for month; c) Access data takes last access of month; d) Values for SGA and 'Infection Control' use most recent result.