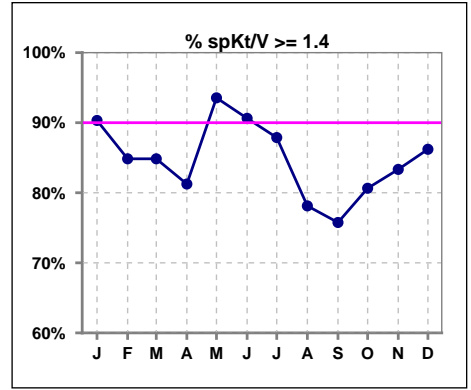
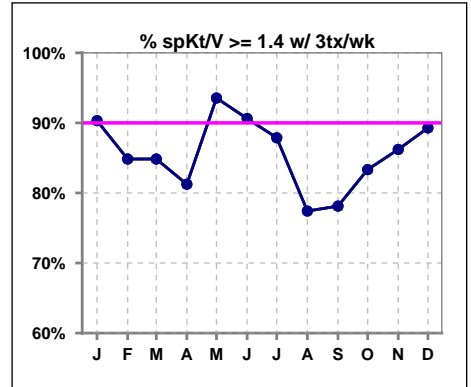


**I. ADEQUACY OF DIALYSIS**

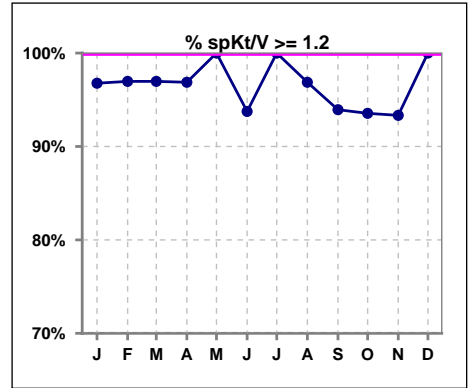
	Jan	Feb	Mar	Apr	May	Jun	Jul	Aug	Sep	Oct	Nov	Dec
# spKt/V	31	33	33	32	31	32	33	32	33	31	30	29
# spKt/V >= 1.4	28	28	28	26	29	29	29	25	25	25	25	25
Pop. Mean	1.72	1.65	1.63	1.61	1.69	1.67	1.69	1.62	1.55	1.53	1.57	1.67
Std. Deviation	0.30	0.28	0.29	0.30	0.26	0.25	0.33	0.28	0.27	0.25	0.23	0.26
% spKt/V >= 1.4	90%	85%	85%	81%	94%	91%	88%	78%	76%	81%	83%	86%



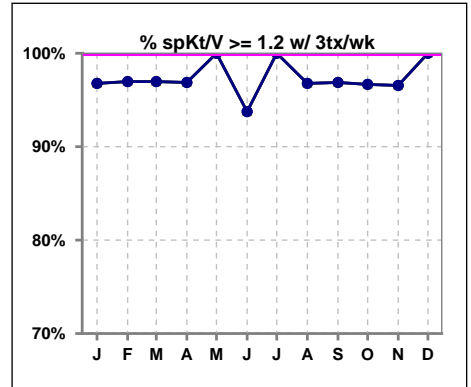
	Jan	Feb	Mar	Apr	May	Jun	Jul	Aug	Sep	Oct	Nov	Dec
# spKt/V w/ 3tx/wk	31	33	33	32	31	32	33	31	32	30	29	28
# spKt/V >= 1.4 w/3tx/wk	28	28	28	26	29	29	29	24	25	25	25	25
Pop. Mean	1.72	1.65	1.63	1.61	1.69	1.67	1.69	1.60	1.57	1.55	1.59	1.69
Std. Deviation	0.30	0.28	0.29	0.30	0.26	0.25	0.33	0.27	0.25	0.24	0.21	0.25
% >=1.4 w/3tx/wk	90%	85%	85%	81%	94%	91%	88%	77%	78%	83%	86%	89%



	Jan	Feb	Mar	Apr	May	Jun	Jul	Aug	Sep	Oct	Nov	Dec
# spKt/V	31	33	33	32	31	32	33	32	33	31	30	29
# spKt/V >= 1.2	30	32	32	31	31	30	33	31	31	29	28	29
Pop. Mean	1.72	1.65	1.63	1.61	1.69	1.67	1.69	1.62	1.55	1.53	1.57	1.67
Std. Deviation	0.30	0.28	0.29	0.30	0.26	0.25	0.33	0.28	0.27	0.25	0.23	0.26
% spKt/V >= 1.2	97%	97%	97%	97%	100%	94%	100%	97%	94%	94%	93%	100%



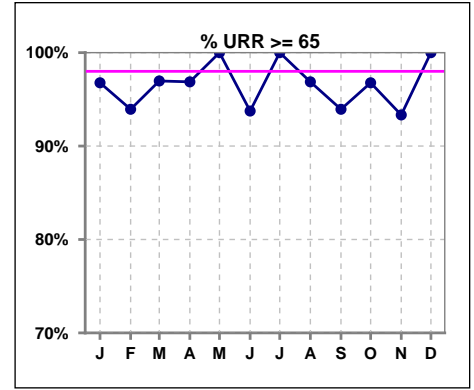
	Jan	Feb	Mar	Apr	May	Jun	Jul	Aug	Sep	Oct	Nov	Dec
# spKt/V w/ 3tx/wk	31	33	33	32	31	32	33	31	32	30	29	28
# spKt/V >= 1.2 w/3tx/wk	30	32	32	31	31	30	33	30	31	29	28	28
Pop. Mean	1.72	1.65	1.63	1.61	1.69	1.67	1.69	1.60	1.57	1.55	1.59	1.69
Std. Deviation	0.30	0.28	0.29	0.30	0.26	0.25	0.33	0.27	0.25	0.24	0.21	0.25
% >=1.2 w/3tx/wk	97%	97%	97%	97%	100%	94%	100%	97%	97%	97%	97%	100%



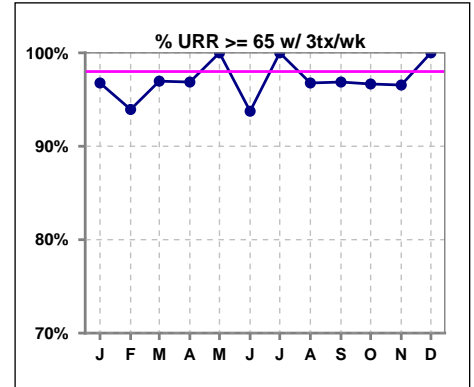
Methodology: a) All labs for 'Adequacy of Dialysis', 'Nutrition', 'Osteodystrophy', 'Anemia' and 'Diabetes' based on last value of month; b) BP's and #L processed are average of all values for month; c) Access data takes last access of month; d) Values for SGA and 'Infection Control' use most recent result.

**I. ADEQUACY OF DIALYSIS - CONT.**

	Jan	Feb	Mar	Apr	May	Jun	Jul	Aug	Sep	Oct	Nov	Dec
# URR	31	33	33	32	31	32	33	32	33	31	30	29
# URR >= 65	30	31	32	31	31	30	33	31	31	30	28	29
Pop. Mean	77	76	75	75	77	76	76	75	74	73	74	76
Std. Deviation	5.90	5.55	6.13	6.46	4.43	4.98	4.99	5.63	5.49	6.27	5.44	4.78
<b>% URR &gt;= 65</b>	<b>97%</b>	<b>94%</b>	<b>97%</b>	<b>97%</b>	<b>100%</b>	<b>94%</b>	<b>100%</b>	<b>97%</b>	<b>94%</b>	<b>97%</b>	<b>93%</b>	<b>100%</b>



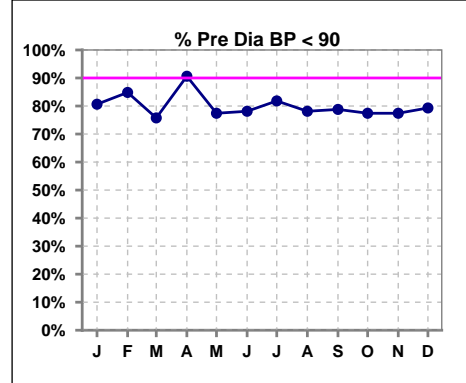
	Jan	Feb	Mar	Apr	May	Jun	Jul	Aug	Sep	Oct	Nov	Dec
# URR w/ 3tx/wk	31	33	33	32	31	32	33	31	32	30	29	28
# URR>=65 w/ 3tx/wk	30	31	32	31	31	30	33	30	31	29	28	28
Pop. Mean	77	76	75	75	77	76	76	75	74	74	75	77
Std. Deviation	5.90	5.55	6.13	6.46	4.43	4.98	4.99	5.49	5.08	6.20	4.98	4.55
<b>% URR&gt;=65 w/ 3tx/wk</b>	<b>97%</b>	<b>94%</b>	<b>97%</b>	<b>97%</b>	<b>100%</b>	<b>94%</b>	<b>100%</b>	<b>97%</b>	<b>97%</b>	<b>97%</b>	<b>97%</b>	<b>100%</b>



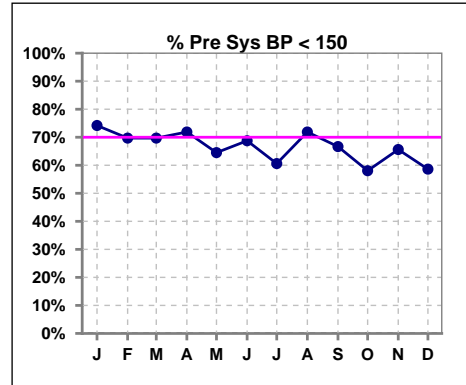
**I. ADEQUACY OF DIALYSIS - CONT.**

**Blood Pressure Control (Pre)**

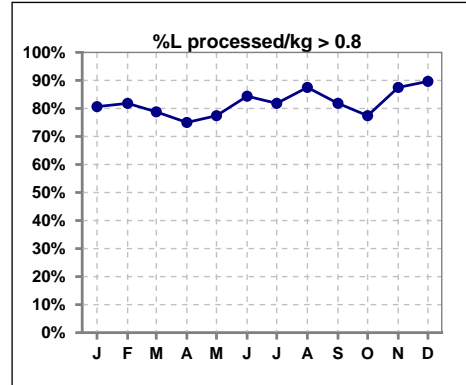
	Jan	Feb	Mar	Apr	May	Jun	Jul	Aug	Sep	Oct	Nov	Dec
# Pre Dia BP	31	33	33	32	31	32	33	32	33	31	31	29
# Pre Dia BP < 90	25	28	25	29	24	25	27	25	26	24	24	23
Pop. Mean	77	78	77	74	77	78	76	77	78	79	77	80
Std. Deviation	12.1	12.5	13.5	13.5	13.9	13.0	14.6	12.4	12.9	11.6	14.7	13.5
<b>% Pre Dia BP &lt; 90</b>	<b>81%</b>	<b>85%</b>	<b>76%</b>	<b>91%</b>	<b>77%</b>	<b>78%</b>	<b>82%</b>	<b>78%</b>	<b>79%</b>	<b>77%</b>	<b>77%</b>	<b>79%</b>



	Jan	Feb	Mar	Apr	May	Jun	Jul	Aug	Sep	Oct	Nov	Dec
# Pre Sys BP	31	33	33	32	31	32	33	32	33	31	32	29
# Pre Sys BP < 150	23	23	23	23	20	22	20	23	22	18	21	17
Pop. Mean	140	142	140	138	142	143	144	143	146	147	143	147
Std. Deviation	16.5	18.2	18.4	19.0	20.8	19.5	19.8	17.1	17.6	21.6	23.8	21.6
<b>%Pre Sys BP &lt;150</b>	<b>74%</b>	<b>70%</b>	<b>70%</b>	<b>72%</b>	<b>65%</b>	<b>69%</b>	<b>61%</b>	<b>72%</b>	<b>67%</b>	<b>58%</b>	<b>66%</b>	<b>59%</b>



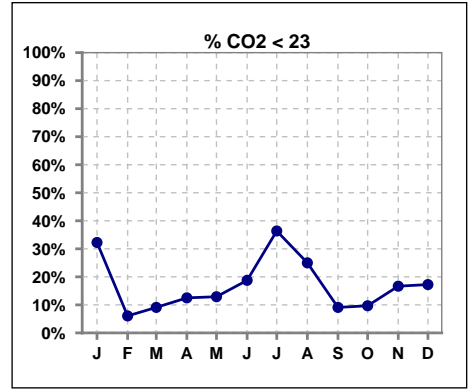
	Jan	Feb	Mar	Apr	May	Jun	Jul	Aug	Sep	Oct	Nov	Dec
# L processed/kg	31	33	33	32	31	32	33	32	33	31	32	29
# L processed/kg>0.8	25	27	26	24	24	27	27	28	27	24	28	26
Pop. Mean	1	1	1	1	1	1	1	1	1	1	1	1
Std. Deviation	0.3	0.3	0.3	0.2	0.3	0.2	0.2	0.2	0.2	0.2	0.2	0.2
<b>% L processed/kg&gt;0.8</b>	<b>81%</b>	<b>82%</b>	<b>79%</b>	<b>75%</b>	<b>77%</b>	<b>84%</b>	<b>82%</b>	<b>88%</b>	<b>82%</b>	<b>77%</b>	<b>88%</b>	<b>90%</b>



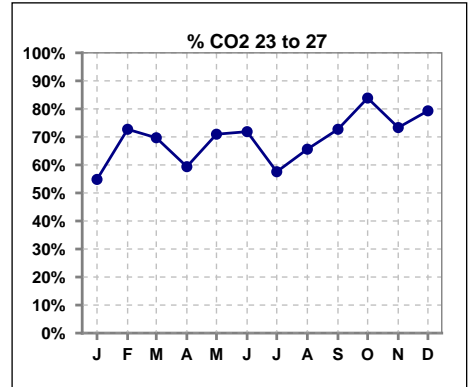
Methodology: a) All labs for 'Adequacy of Dialysis', 'Nutrition', 'Osteodystrophy', 'Anemia' and 'Diabetes' based on last value of month; b) BP's and #L processed are average of all values for month; c) Access data takes last access of month; d) Values for SGA and 'Infection Control' use most recent result.

**I. ADEQUACY OF DIALYSIS - CONT.**

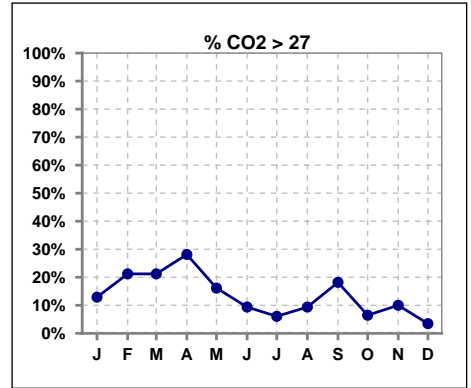
	Jan	Feb	Mar	Apr	May	Jun	Jul	Aug	Sep	Oct	Nov	Dec
# CO2	31	33	33	32	31	32	33	32	33	31	30	29
# CO2 < 23	10	2	3	4	4	6	12	8	3	3	5	5
Pop. Mean	24	26	26	26	25	25	24	24	26	25	25	24
Std. Deviation	2.80	2.02	2.20	2.41	2.57	2.21	2.84	3.39	3.06	1.88	2.78	2.11
% CO2 < 23	32%	6%	9%	13%	13%	19%	36%	25%	9%	10%	17%	17%



	Jan	Feb	Mar	Apr	May	Jun	Jul	Aug	Sep	Oct	Nov	Dec
# CO2	31	33	33	32	31	32	33	32	33	31	30	29
# CO2 23 to 27	17	24	23	19	22	23	19	21	24	26	22	23
Pop. Mean	24	26	26	26	25	25	24	24	26	25	25	24
Std. Deviation	2.80	2.02	2.20	2.41	2.57	2.21	2.84	3.39	3.06	1.88	2.78	2.11
% CO2 23 to 27	55%	73%	70%	59%	71%	72%	58%	66%	73%	84%	73%	79%



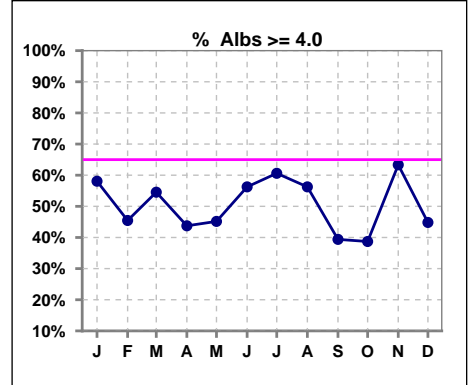
	Jan	Feb	Mar	Apr	May	Jun	Jul	Aug	Sep	Oct	Nov	Dec
# CO2	31	33	33	32	31	32	33	32	33	31	30	29
# CO2 > 27	4	7	7	9	5	3	2	3	6	2	3	1
Pop. Mean	24	26	26	26	25	25	24	24	26	25	25	24
Std. Deviation	2.80	2.02	2.20	2.41	2.57	2.21	2.84	3.39	3.06	1.88	2.78	2.11
% CO2 > 27	13%	21%	21%	28%	16%	9%	6%	9%	18%	6%	10%	3%



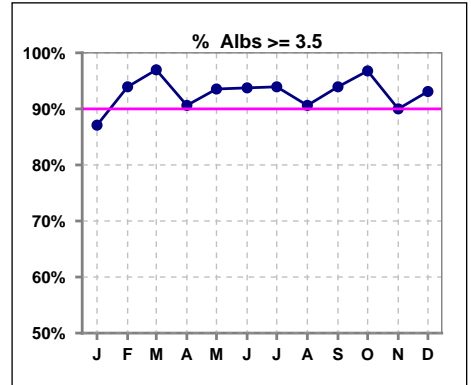
\*Albumin values use BCG method - as of July 2001

**II. NUTRITION**

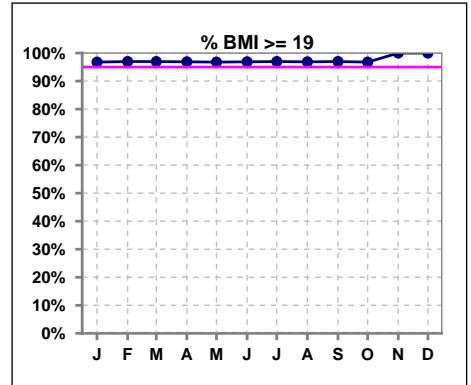
	Jan	Feb	Mar	Apr	May	Jun	Jul	Aug	Sep	Oct	Nov	Dec
# Albumin	31	33	33	32	31	32	33	32	33	31	30	29
# Albumin >= 4.0	18	15	18	14	14	18	20	18	13	12	19	13
Pop. Mean	3.9	3.9	4.0	3.9	3.9	3.9	4.0	4.0	3.9	3.9	3.9	3.9
Std. Deviation	0.36	0.31	0.36	0.35	0.28	0.30	0.32	0.31	0.30	0.31	0.44	0.35
% Alb >= 4.0	58%	45%	55%	44%	45%	56%	61%	56%	39%	39%	63%	45%



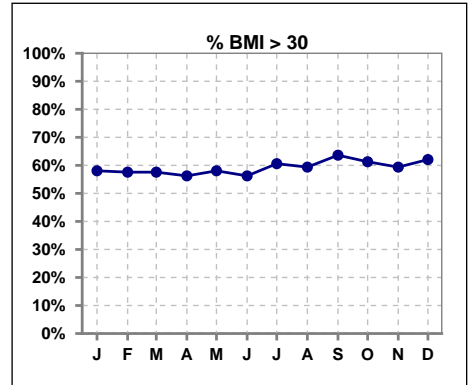
	Jan	Feb	Mar	Apr	May	Jun	Jul	Aug	Sep	Oct	Nov	Dec
# Albumin	31	33	33	32	31	32	33	32	33	31	30	29
# Albumin >= 3.5	27	31	32	29	29	30	31	29	31	30	27	27
Pop. Mean	3.9	3.9	4.0	3.9	3.9	3.9	4.0	4.0	3.9	3.9	3.9	3.9
Std. Deviation	0.36	0.31	0.36	0.35	0.28	0.30	0.32	0.31	0.30	0.31	0.44	0.35
% Alb >= 3.5	87%	94%	97%	91%	94%	94%	94%	91%	94%	97%	90%	93%



	Jan	Feb	Mar	Apr	May	Jun	Jul	Aug	Sep	Oct	Nov	Dec
# BMI	31	33	33	32	31	32	33	32	33	31	32	29
# BMI >= 19	30	32	32	31	30	31	32	31	32	30	32	29
Pop. Mean	32	32	32	32	32	32	32	32	32	32	32	33
Std. Deviation	8.7	8.4	8.4	8.4	8.2	7.8	7.6	7.6	7.5	7.8	7.6	7.7
% BMI >= 19	97%	97%	97%	97%	97%	97%	97%	97%	97%	97%	100%	100%



	Jan	Feb	Mar	Apr	May	Jun	Jul	Aug	Sep	Oct	Nov	Dec
# BMI	31	33	33	32	31	32	33	32	33	31	32	29
# BMI > 30	18	19	19	18	18	18	20	19	21	19	19	18
Pop. Mean	32	32	32	32	32	32	32	32	32	32	32	33
Std. Deviation	8.7	8.4	8.4	8.4	8.2	7.8	7.6	7.6	7.5	7.8	7.6	7.7
% BMI > 30	58%	58%	58%	56%	58%	56%	61%	59%	64%	61%	59%	62%

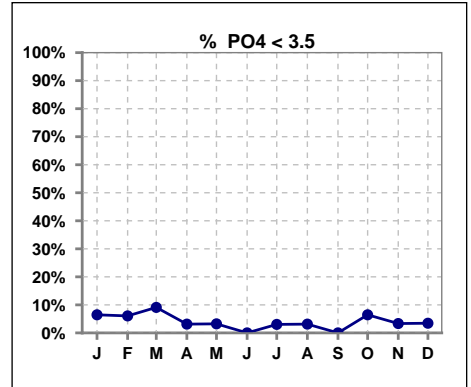


Methodology: a) All labs for 'Adequacy of Dialysis', 'Nutrition', 'Osteodystrophy', 'Anemia' and 'Diabetes' based on last value of month; b) BP's and #L processed are average of all values for month; c) Access data takes last access of month; d) Values for SGA and 'Infection Control' use most recent result.

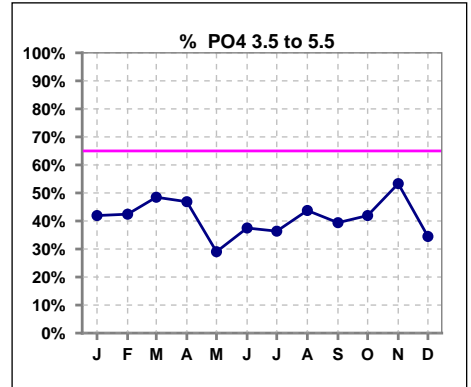
Lab methodology for PTH changed January 2012

**III. OSTEODYSTROPHY**

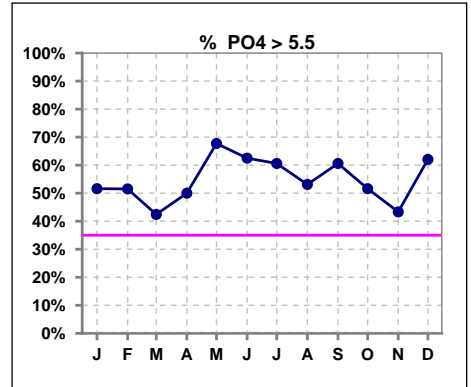
	Jan	Feb	Mar	Apr	May	Jun	Jul	Aug	Sep	Oct	Nov	Dec
# PO4	31	33	33	32	31	32	33	32	33	31	30	29
# PO4 < 3.5	2	2	3	1	1	0	1	1	0	2	1	1
Pop. Mean	5.8	5.7	5.4	5.8	5.9	5.9	6.1	5.8	5.9	5.6	5.5	6.2
Std. Deviation	1.74	1.65	1.41	1.31	1.06	1.42	1.57	1.25	1.35	1.36	1.39	1.60
% PO4 < 3.5	6%	6%	9%	3%	3%	0%	3%	3%	0%	6%	3%	3%



	Jan	Feb	Mar	Apr	May	Jun	Jul	Aug	Sep	Oct	Nov	Dec
# PO4	31	33	33	32	31	32	33	32	33	31	30	29
# PO4 3.5 to 5.5	13	14	16	15	9	12	12	14	13	13	16	10
Pop. Mean	5.8	5.7	5.4	5.8	5.9	5.9	6.1	5.8	5.9	5.6	5.5	6.2
Std. Deviation	1.74	1.65	1.41	1.31	1.06	1.42	1.57	1.25	1.35	1.36	1.39	1.60
% PO4 3.5 to 5.5	42%	42%	48%	47%	29%	38%	36%	44%	39%	42%	53%	34%



	Jan	Feb	Mar	Apr	May	Jun	Jul	Aug	Sep	Oct	Nov	Dec
# PO4	31	33	33	32	31	32	33	32	33	31	30	29
# PO4 > 5.5	16	17	14	16	21	20	20	17	20	16	13	18
Pop. Mean	5.8	5.7	5.4	5.8	5.9	5.9	6.1	5.8	5.9	5.6	5.5	6.2
Std. Deviation	1.74	1.65	1.41	1.31	1.06	1.42	1.57	1.25	1.35	1.36	1.39	1.60
% PO4 > 5.5	52%	52%	42%	50%	68%	63%	61%	53%	61%	52%	43%	62%

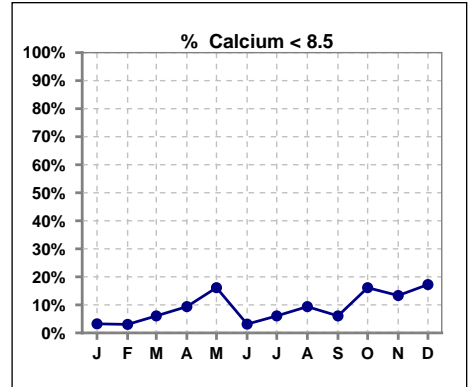


Methodology: a) All labs for 'Adequacy of Dialysis', 'Nutrition', 'Osteodystrophy', 'Anemia' and 'Diabetes' based on last value of month; b) BP's and #L processed are average of all values for month; c) Access data takes last access of month; d) Values for SGA and 'Infection Control' use most recent result.

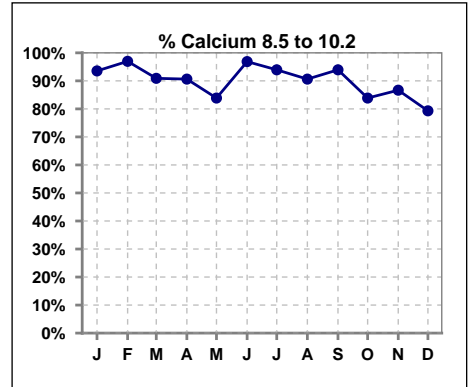
Lab methodology for PTH changed January 2012

**III. OSTEODYSTROPHY - CONT.**

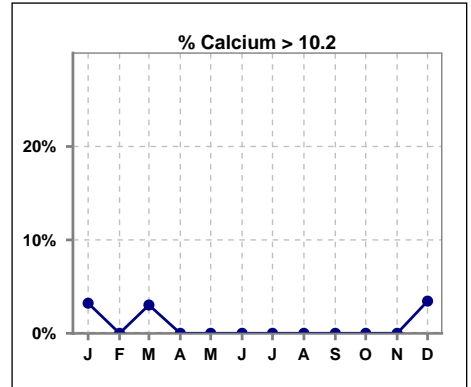
	Jan	Feb	Mar	Apr	May	Jun	Jul	Aug	Sep	Oct	Nov	Dec
# Calcium	31	33	33	32	31	32	33	32	33	31	30	29
# Calcium < 8.5	1	1	2	3	5	1	2	3	2	5	4	5
Pop. Mean	9.4	9.4	9.4	9.2	9.2	9.4	9.4	9.3	9.3	9.0	9.2	8.9
Std. Deviation	0.74	0.45	0.50	0.58	0.59	0.44	0.47	0.58	0.48	0.51	0.68	0.73
<b>% Calcium &lt; 8.5</b>	<b>3%</b>	<b>3%</b>	<b>6%</b>	<b>9%</b>	<b>16%</b>	<b>3%</b>	<b>6%</b>	<b>9%</b>	<b>6%</b>	<b>16%</b>	<b>13%</b>	<b>17%</b>



	Jan	Feb	Mar	Apr	May	Jun	Jul	Aug	Sep	Oct	Nov	Dec
# Calcium	31	33	33	32	31	32	33	32	33	31	30	29
# Calcium 8.5 to 10.2	29	32	30	29	26	31	31	29	31	26	26	23
Pop. Mean	9.4	9.4	9.4	9.2	9.2	9.4	9.4	9.3	9.3	9.0	9.2	8.9
Std. Deviation	0.74	0.45	0.50	0.58	0.59	0.44	0.47	0.58	0.48	0.51	0.68	0.73
<b>% Calcium 8.5 to 10.2</b>	<b>94%</b>	<b>97%</b>	<b>91%</b>	<b>91%</b>	<b>84%</b>	<b>97%</b>	<b>94%</b>	<b>91%</b>	<b>94%</b>	<b>84%</b>	<b>87%</b>	<b>79%</b>



	Jan	Feb	Mar	Apr	May	Jun	Jul	Aug	Sep	Oct	Nov	Dec
# Calcium	31	33	33	32	31	32	33	32	33	31	30	29
# Calcium > 10.2	1	0	1	0	0	0	0	0	0	0	0	1
Pop. Mean	9.4	9.4	9.4	9.2	9.2	9.4	9.4	9.3	9.3	9.0	9.2	8.9
Std. Deviation	0.74	0.45	0.50	0.58	0.59	0.44	0.47	0.58	0.48	0.51	0.68	0.73
<b>% Calcium &gt; 10.2</b>	<b>3%</b>	<b>0%</b>	<b>3%</b>	<b>0%</b>	<b>0%</b>	<b>0%</b>	<b>0%</b>	<b>0%</b>	<b>0%</b>	<b>0%</b>	<b>0%</b>	<b>3%</b>

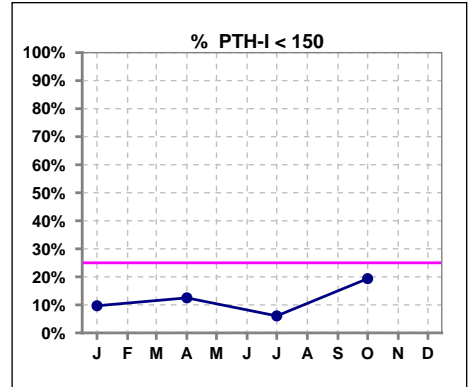


Methodology: a) All labs for 'Adequacy of Dialysis', 'Nutrition', 'Osteodystrophy', 'Anemia' and 'Diabetes' based on last value of month; b) BP's and #L processed are average of all values for month; c) Access data takes last access of month; d) Values for SGA and 'Infection Control' use most recent result.

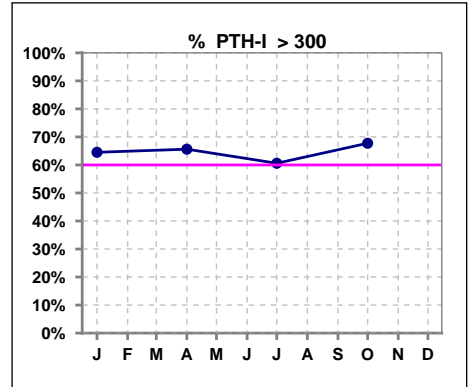
Lab methodology for PTH changed January 2012

**III. OSTEODYSTROPHY - CONT.**

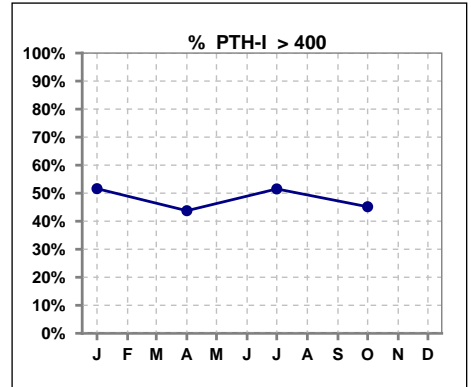
	Jan	Feb	Mar	Apr	May	Jun	Jul	Aug	Sep	Oct	Nov	Dec
# PTH-I	31			32			33			31		
# PTH-I < 150	3			4			2			6		
Pop. Mean	487			427			416			461		
Std. Deviation	354			278			254			397		
% PTH-I < 150	10%			13%			6%			19%		



	Jan	Feb	Mar	Apr	May	Jun	Jul	Aug	Sep	Oct	Nov	Dec
# PTH-I	31			32			33			31		
# PTH-I > 300	20			21			20			21		
Pop. Mean	487			427			416			461		
Std. Deviation	354			278			254			397		
% PTH-I > 300	65%			66%			61%			68%		



	Jan	Feb	Mar	Apr	May	Jun	Jul	Aug	Sep	Oct	Nov	Dec
# PTH-I	31			32			33			31		
# PTH-I > 400	16			14			17			14		
Pop. Mean	487			427			416			461		
Std. Deviation	354			278			254			397		
% PTH-I > 400	52%			44%			52%			45%		

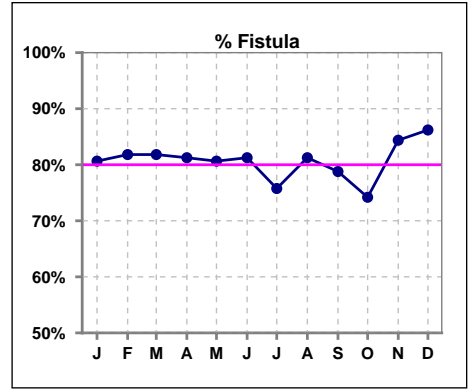


Methodology: a) All labs for 'Adequacy of Dialysis', 'Nutrition', 'Osteodystrophy', 'Anemia' and 'Diabetes' based on last value of month; b) BP's and #L processed are average of all values for month; c) Access data takes last access of month; d) Values for SGA and 'Infection Control' use most recent result.

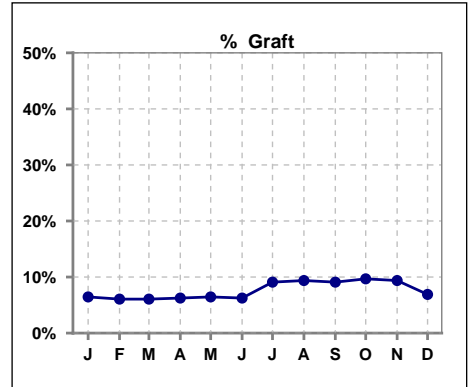


**IV. ACCESS**

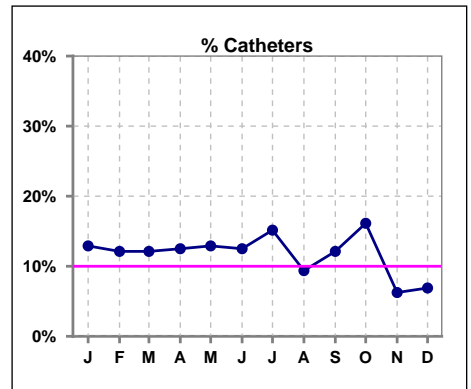
	Jan	Feb	Mar	Apr	May	Jun	Jul	Aug	Sep	Oct	Nov	Dec
<b># Access</b>	31	33	33	32	31	32	33	32	33	31	32	29
<b># Fistula</b>	25	27	27	26	25	26	25	26	26	23	27	25
<b>% Fistula</b>	81%	82%	82%	81%	81%	81%	76%	81%	79%	74%	84%	86%



	Jan	Feb	Mar	Apr	May	Jun	Jul	Aug	Sep	Oct	Nov	Dec
<b># Access</b>	31	33	33	32	31	32	33	32	33	31	32	29
<b># Graft</b>	2	2	2	2	2	2	3	3	3	3	3	2
<b>% Graft</b>	6%	6%	6%	6%	6%	6%	9%	9%	9%	10%	9%	7%



	Jan	Feb	Mar	Apr	May	Jun	Jul	Aug	Sep	Oct	Nov	Dec
<b># Access</b>	31	33	33	32	31	32	33	32	33	31	32	29
<b># Catheters</b>	4	4	4	4	4	4	5	3	4	5	2	2
<b>% Catheters</b>	13%	12%	12%	13%	13%	13%	15%	9%	12%	16%	6%	7%



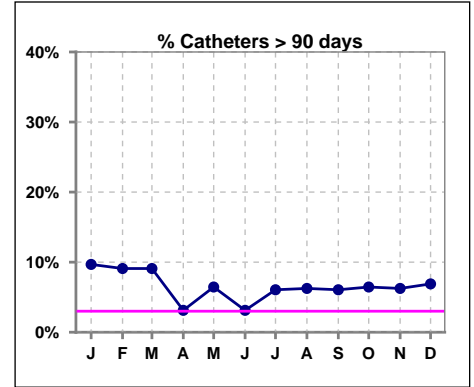
Methodology: a) All labs for 'Adequacy of Dialysis', 'Nutrition', 'Osteodystrophy', 'Anemia' and 'Diabetes' based on last value of month; b) BP's and #L processed are average of all values for month; c) Access data takes last access of month; d) Values for SGA and 'Infection Control' use most recent result.

**IV. ACCESS - CONT.**

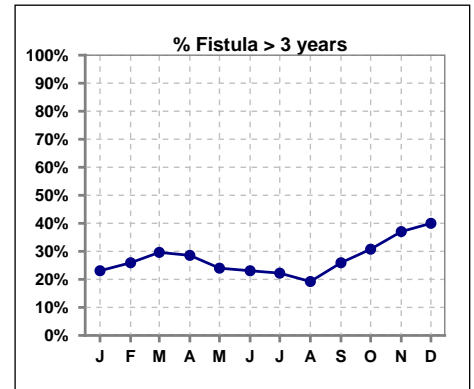
**Catheters > 90 days**

	Jan	Feb	Mar	Apr	May	Jun	Jul	Aug	Sep	Oct	Nov	Dec
<b># Access</b>	31	33	33	32	31	32	33	32	33	31	32	29
<b># Catheters</b>	3	3	3	1	2	1	2	2	2	2	2	2
<b>% Catheters</b>	10%	9%	9%	3%	6%	3%	6%	6%	6%	6%	6%	7%

**Definition:** Catheter in use on last treatment of the month



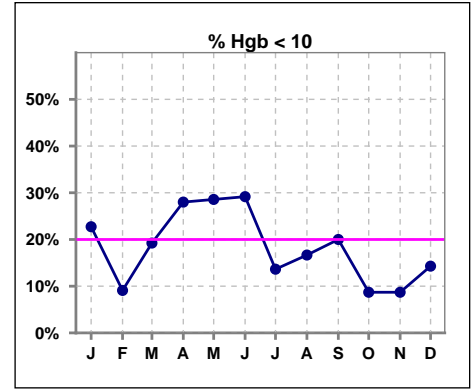
	Jan	Feb	Mar	Apr	May	Jun	Jul	Aug	Sep	Oct	Nov	Dec
<b># Fistula</b>	26	27	27	28	25	26	27	26	27	26	27	25
<b># Fistula &gt; 3 yrs</b>	6	7	8	8	6	6	6	5	7	8	10	10
<b>% Fistula &gt; 3 yrs</b>	23%	26%	30%	29%	24%	23%	22%	19%	26%	31%	37%	40%



**V. ANEMIA**

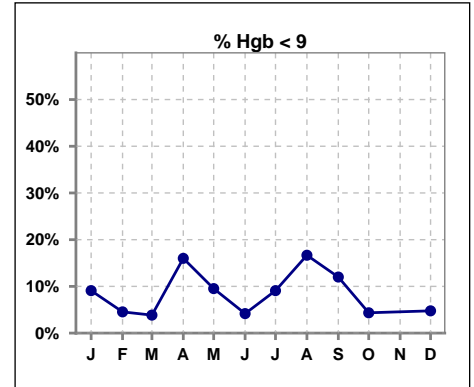
	Jan	Feb	Mar	Apr	May	Jun	Jul	Aug	Sep	Oct	Nov	Dec
# Hgb	22	22	26	25	21	24	22	24	25	23	23	21
# Hgb < 10	5	2	5	7	6	7	3	4	5	2	2	3
Pop. Mean	10.5	10.9	10.8	10.6	10.4	10.7	10.8	10.8	10.6	10.9	11.0	10.9
Std. Deviation	1.3	0.8	0.9	1.4	1.0	1.1	1.1	1.5	1.3	0.8	0.8	1.2
<b>% Hgb &lt; 10</b>	<b>23%</b>	<b>9%</b>	<b>19%</b>	<b>28%</b>	<b>29%</b>	<b>29%</b>	<b>14%</b>	<b>17%</b>	<b>20%</b>	<b>9%</b>	<b>9%</b>	<b>14%</b>

Note: Excludes patients who received no ESA in month.



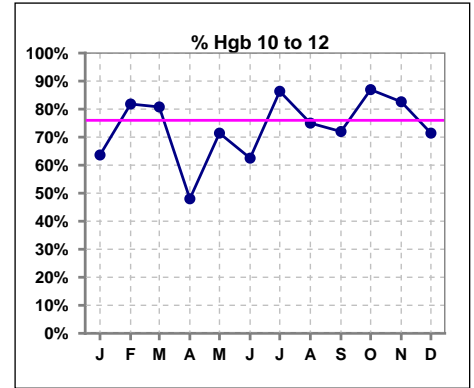
	Jan	Feb	Mar	Apr	May	Jun	Jul	Aug	Sep	Oct	Nov	Dec
# Hgb	22	22	26	25	21	24	22	24	25	23	23	21
# Hgb < 9	2	1	1	4	2	1	2	4	3	1		1
Pop. Mean	10.5	10.9	10.8	10.6	10.4	10.7	10.8	10.8	10.6	10.9	11.0	10.9
Std. Deviation	1.3	0.8	0.9	1.4	1.0	1.1	1.1	1.5	1.3	0.8	0.8	1.2
<b>% Hgb &lt; 9</b>	<b>9%</b>	<b>5%</b>	<b>4%</b>	<b>16%</b>	<b>10%</b>	<b>4%</b>	<b>9%</b>	<b>17%</b>	<b>12%</b>	<b>4%</b>		<b>5%</b>

Note: Excludes patients who received no ESA in month.



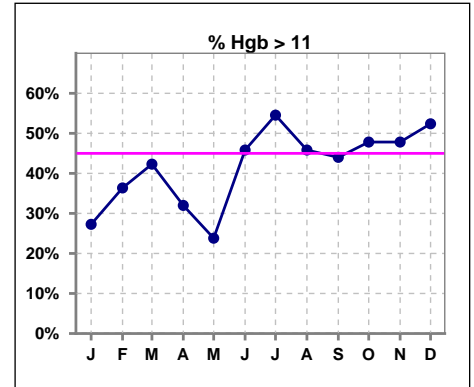
	Jan	Feb	Mar	Apr	May	Jun	Jul	Aug	Sep	Oct	Nov	Dec
# Hgb	22	22	26	25	21	24	22	24	25	23	23	21
# Hgb 10 to 12	14	18	21	12	15	15	19	18	18	20	19	15
Pop. Mean	10.5	10.9	10.8	10.6	10.4	10.7	10.8	10.8	10.6	10.9	11.0	10.9
Std. Deviation	1.3	0.8	0.9	1.4	1.0	1.1	1.1	1.5	1.3	0.8	0.8	1.2
<b>% Hgb 10 to 12</b>	<b>64%</b>	<b>82%</b>	<b>81%</b>	<b>48%</b>	<b>71%</b>	<b>63%</b>	<b>86%</b>	<b>75%</b>	<b>72%</b>	<b>87%</b>	<b>83%</b>	<b>71%</b>

Note: Excludes patients who received no ESA in month.



	Jan	Feb	Mar	Apr	May	Jun	Jul	Aug	Sep	Oct	Nov	Dec
# Hgb	22	22	26	25	21	24	22	24	25	23	23	21
# Hgb > 11	6	8	11	8	5	11	12	11	11	11	11	11
Pop. Mean	10.5	10.9	10.8	10.6	10.4	10.7	10.8	10.8	10.6	10.9	11.0	10.9
Std. Deviation	1.3	0.8	0.9	1.4	1.0	1.1	1.1	1.5	1.3	0.8	0.8	1.2
<b>% Hgb &gt; 11</b>	<b>27%</b>	<b>36%</b>	<b>42%</b>	<b>32%</b>	<b>24%</b>	<b>46%</b>	<b>55%</b>	<b>46%</b>	<b>44%</b>	<b>48%</b>	<b>48%</b>	<b>52%</b>

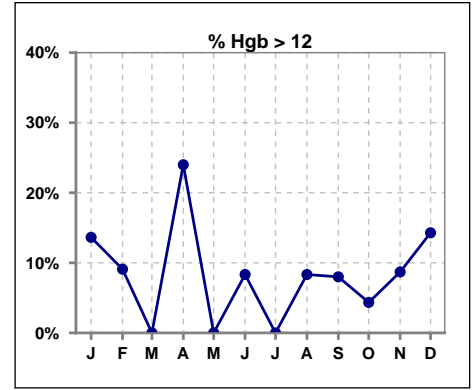
Note: Excludes patients who received no ESA in month.



**V. ANEMIA - CONT.**

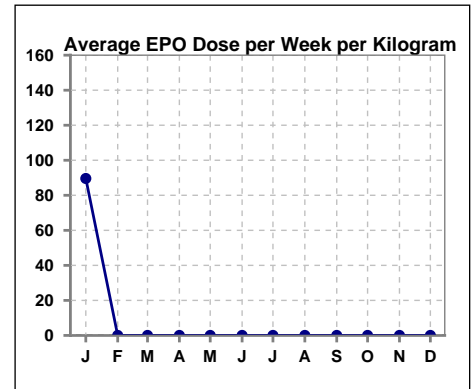
	Jan	Feb	Mar	Apr	May	Jun	Jul	Aug	Sep	Oct	Nov	Dec
# Hgb	22	22	26	25	21	24	22	24	25	23	23	21
# Hgb > 12	3	2	0	6	0	2	0	2	2	1	2	3
Pop. Mean	10.5	10.9	10.8	10.6	10.4	10.7	10.8	10.8	10.6	10.9	11.0	10.9
Std. Deviation	1.3	0.8	0.9	1.4	1.0	1.1	1.1	1.5	1.3	0.8	0.8	1.2
% Hgb > 12	14%	9%	0%	24%	0%	8%	0%	8%	8%	4%	9%	14%

Note: Excludes patients who received no ESA in month.



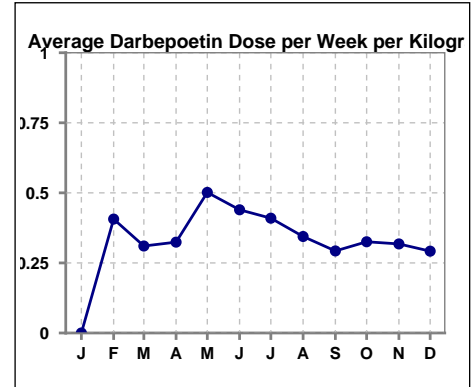
**Average EPO Dose per Week per Kilogram**

	Jan	Feb	Mar	Apr	May	Jun	Jul	Aug	Sep	Oct	Nov	Dec
# Average EPO	89.6	0	0	0	0	0	0	0	0	0	0	0



**Average Darbeopetin Dose per Week per Kilogram**

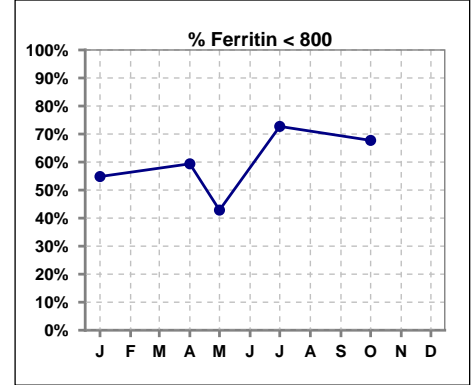
	Jan	Feb	Mar	Apr	May	Jun	Jul	Aug	Sep	Oct	Nov	Dec
# Average Darbeopetin	0	.4	.3	.3	.5	.4	.4	.3	.3	.3	.3	.3



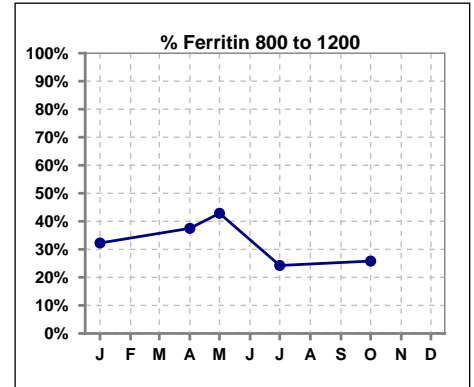
**V. ANEMIA - CONT.**

**Iron Profile**

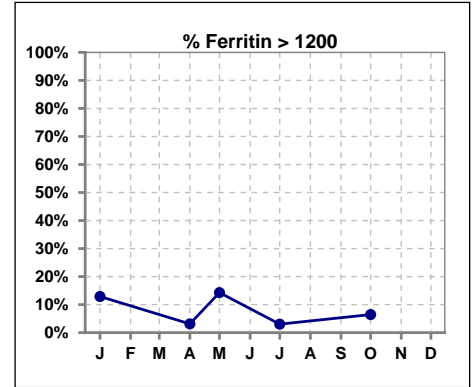
	Jan	Feb	Mar	Apr	May	Jun	Jul	Aug	Sep	Oct	Nov	Dec
# Ferritin	31			32	7		33			31		
# Ferritin < 800	17			19	3		24			21		
Pop. Mean	772			699	860		665			739		
Std. Deviation	424			311	420		285			506		
<b>% Ferritin &lt; 800</b>	<b>55%</b>			<b>59%</b>	<b>43%</b>		<b>73%</b>			<b>68%</b>		



	Jan	Feb	Mar	Apr	May	Jun	Jul	Aug	Sep	Oct	Nov	Dec
# Ferritin	31			32	7		33			31		
# Ferritin 800 to 1200	10			12	3		8			8		
Pop. Mean	772			699	860		665			739		
Std. Deviation	424			311	420		285			506		
<b>% Ferritin 800 to 1200</b>	<b>32%</b>			<b>38%</b>	<b>43%</b>		<b>24%</b>			<b>26%</b>		



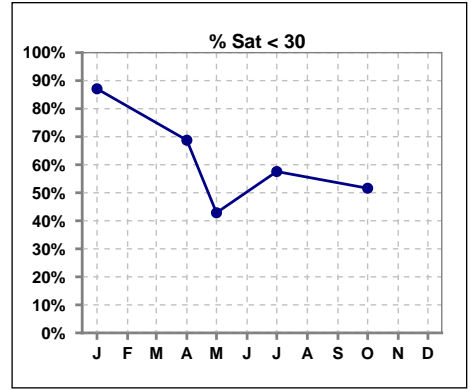
	Jan	Feb	Mar	Apr	May	Jun	Jul	Aug	Sep	Oct	Nov	Dec
# Ferritin	31			32	7		33			31		
# Ferritin > 1200	4			1	1		1			2		
Pop. Mean	772			699	860		665			739		
Std. Deviation	424			311	420		285			506		
<b>% Ferritin &gt; 1200</b>	<b>13%</b>			<b>3%</b>	<b>14%</b>		<b>3%</b>			<b>6%</b>		



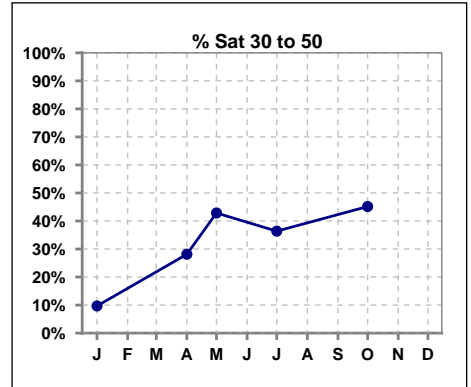
Methodology: a) All labs for 'Adequacy of Dialysis', 'Nutrition', 'Osteodystrophy', 'Anemia' and 'Diabetes' based on last value of month; b) BP's and #L processed are average of all values for month; c) Access data takes last access of month; d) Values for SGA and 'Infection Control' use most recent result.

**V. ANEMIA - CONT.**

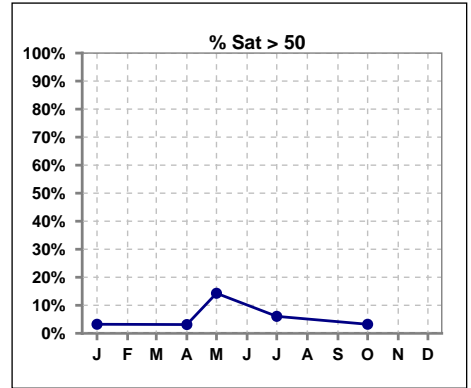
	Jan	Feb	Mar	Apr	May	Jun	Jul	Aug	Sep	Oct	Nov	Dec
# % Sat	31			32	7		33			31		
# % Sat < 30	27			22	3		19			16		
Pop. Mean	25			28	36		29			30		
Std. Deviation	10			13	21		12			10		
<b>% % Sat &lt; 30</b>	<b>87%</b>			<b>69%</b>	<b>43%</b>		<b>58%</b>			<b>52%</b>		



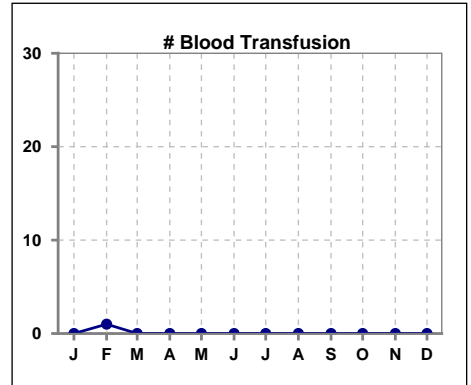
	Jan	Feb	Mar	Apr	May	Jun	Jul	Aug	Sep	Oct	Nov	Dec
# % Sat	31			32	7		33			31		
# % Sat 30 to 50	3			9	3		12			14		
Pop. Mean	25			28	36		29			30		
Std. Deviation	10			13	21		12			10		
<b>% % Sat 30 to 50</b>	<b>10%</b>			<b>28%</b>	<b>43%</b>		<b>36%</b>			<b>45%</b>		



	Jan	Feb	Mar	Apr	May	Jun	Jul	Aug	Sep	Oct	Nov	Dec
# % Sat	31			32	7		33			31		
# % Sat > 50	1			1	1		2			1		
Pop. Mean	25			28	36		29			30		
Std. Deviation	10			13	21		12			10		
<b>% % Sat &gt; 50</b>	<b>3%</b>			<b>3%</b>	<b>14%</b>		<b>6%</b>			<b>3%</b>		



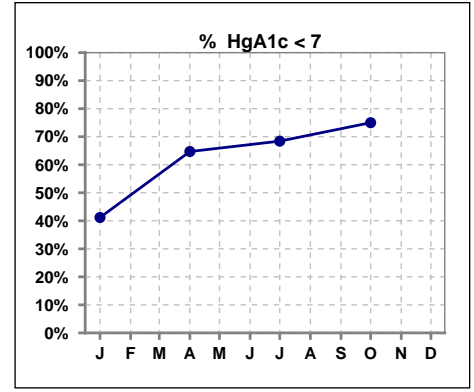
	Jan	Feb	Mar	Apr	May	Jun	Jul	Aug	Sep	Oct	Nov	Dec
# Patient	31	33	33	32	31	32	33	32	33	32	33	31
# Blood Transfusion	0	1	0	0	0	0	0	0	0	0	0	0



Methodology: a) All labs for 'Adequacy of Dialysis', 'Nutrition', 'Osteodystrophy', 'Anemia' and 'Diabetes' based on last value of month; b) BP's and #L processed are average of all values for month; c) Access data takes last access of month; d) Values for SGA and 'Infection Control' use most recent result.

**VI. Diabetes**

	Jan	Feb	Mar	Apr	May	Jun	Jul	Aug	Sep	Oct	Nov	Dec
# HgA1c	17			17			19			16		
# HgA1c < 7	7			11			13			12		
Pop. Mean	6.8			6.5			6.4			6.2		
Std. Deviation	1.01			1.09			1.08			0.98		
<b>% HgA1c &lt; 7</b>	<b>41%</b>			<b>65%</b>			<b>68%</b>			<b>75%</b>		

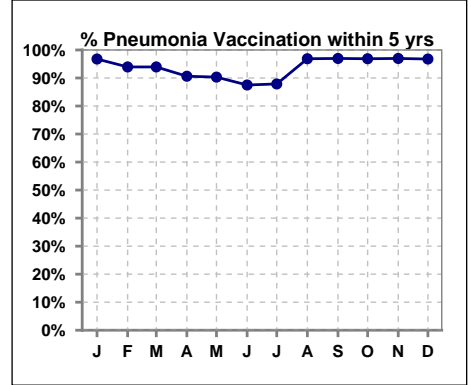


Methodology: a) All labs for 'Adequacy of Dialysis', 'Nutrition', 'Osteodystrophy', 'Anemia' and 'Diabetes' based on last value of month; b) BP's and #L processed are average of all values for month; c) Access data takes last access of month; d) Values for SGA and 'Infection Control' use most recent result.

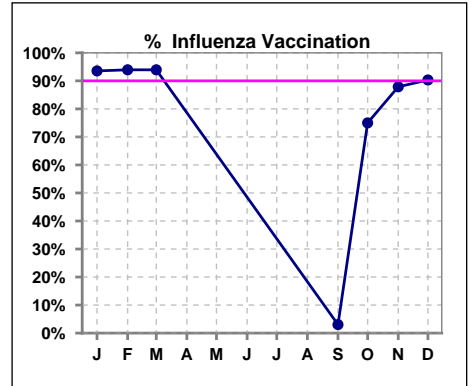
**VII. Infection Control**

**Pneumonia vaccination within the past five years**

	Jan	Feb	Mar	Apr	May	Jun	Jul	Aug	Sep	Oct	Nov	Dec
# Patient	31	33	33	32	31	32	33	32	33	32	33	31
# Pneumonia	30	31	31	29	28	28	29	31	32	31	32	30
<b>% Pneumonia</b>	<b>97%</b>	<b>94%</b>	<b>94%</b>	<b>91%</b>	<b>90%</b>	<b>88%</b>	<b>88%</b>	<b>97%</b>	<b>97%</b>	<b>97%</b>	<b>97%</b>	<b>97%</b>



	Jan	Feb	Mar	Apr	May	Jun	Jul	Aug	Sep	Oct	Nov	Dec
# Patient	31	33	33						33	32	33	31
# Influenza	29	31	31						1	24	29	28
<b>% Influenza</b>	<b>94%</b>	<b>94%</b>	<b>94%</b>						<b>3%</b>	<b>75%</b>	<b>88%</b>	<b>90%</b>

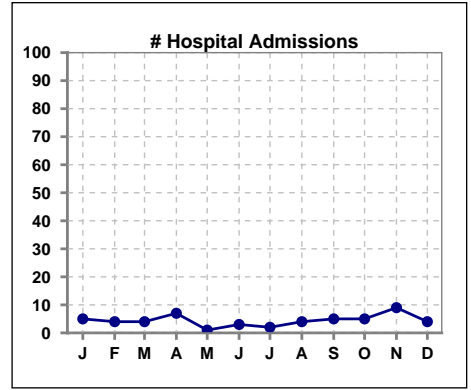


Methodology: a) All labs for 'Adequacy of Dialysis', 'Nutrition', 'Osteodystrophy', 'Anemia' and 'Diabetes' based on last value of month; b) BP's and #L processed are average of all values for month; c) Access data takes last access of month; d) Values for SGA and 'Infection Control' use most recent result.

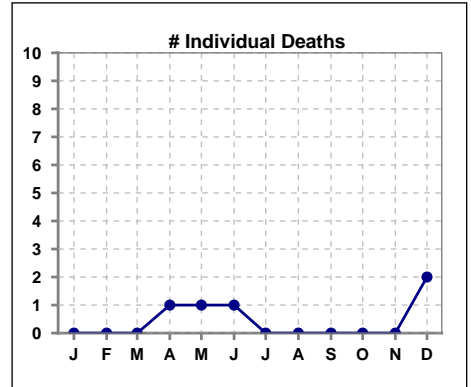


**VIII. Outcome measures**

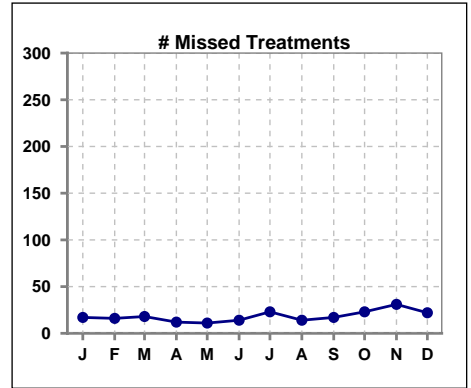
	Jan	Feb	Mar	Apr	May	Jun	Jul	Aug	Sep	Oct	Nov	Dec
<b># Patient</b>	31	33	33	32	31	32	33	32	33	32	33	31
<b># Hospital Admissions</b>	5	4	4	7	1	3	2	4	5	5	9	4



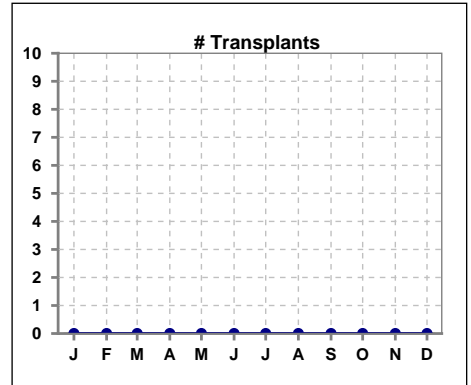
	Jan	Feb	Mar	Apr	May	Jun	Jul	Aug	Sep	Oct	Nov	Dec
<b># Patient</b>	31	33	33	32	31	32	33	32	33	32	33	31
<b># Individual Deaths</b>	0	0	0	1	1	1	0	0	0	0	0	2



	Jan	Feb	Mar	Apr	May	Jun	Jul	Aug	Sep	Oct	Nov	Dec
<b># Patient</b>	31	33	33	32	31	32	33	32	33	32	33	31
<b># Missed Treatments</b>	17	16	18	12	11	14	23	14	17	23	31	22



	Jan	Feb	Mar	Apr	May	Jun	Jul	Aug	Sep	Oct	Nov	Dec
<b># Patient</b>	31	33	33	32	31	32	33	32	33	32	33	31
<b># Transplants</b>	0	0	0	0	0	0	0	0	0	0	0	0



Methodology: a) All labs for 'Adequacy of Dialysis', 'Nutrition', 'Osteodystrophy', 'Anemia' and 'Diabetes' based on last value of month; b) BP's and #L processed are average of all values for month; c) Access data takes last access of month; d) Values for SGA and 'Infection Control' use most recent result.