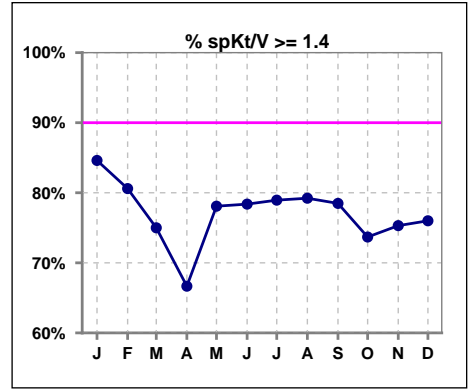
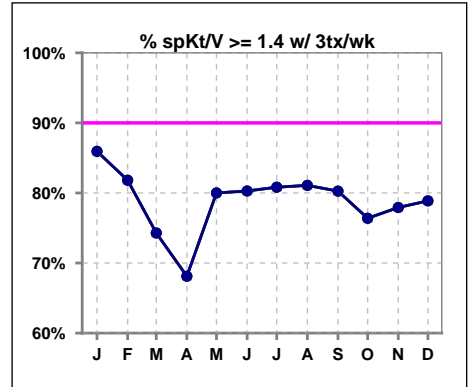


**I. ADEQUACY OF DIALYSIS**

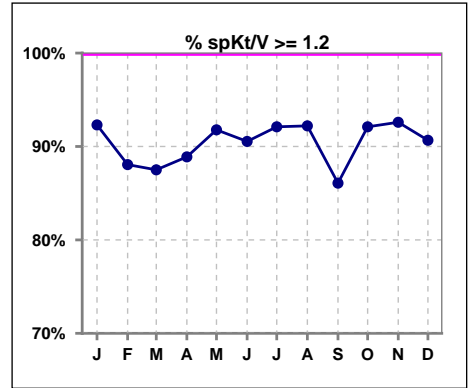
	Jan	Feb	Mar	Apr	May	Jun	Jul	Aug	Sep	Oct	Nov	Dec
# spKt/V	65	67	72	72	73	74	76	77	79	76	81	75
# spKt/V >= 1.4	55	54	54	48	57	58	60	61	62	56	61	57
Pop. Mean	1.63	1.56	1.56	1.54	1.60	1.58	1.59	1.59	1.59	1.52	1.57	1.60
Std. Deviation	0.30	0.31	0.30	0.32	0.31	0.30	0.30	0.29	0.33	0.29	0.29	0.34
% spKt/V >= 1.4	85%	81%	75%	67%	78%	78%	79%	79%	78%	74%	75%	76%



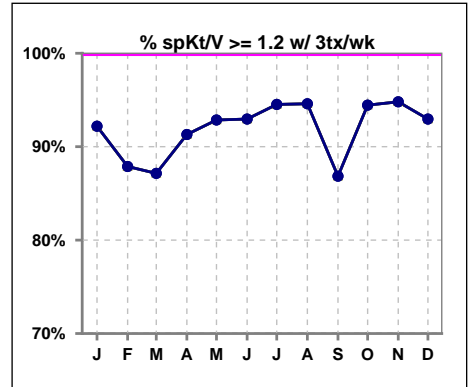
	Jan	Feb	Mar	Apr	May	Jun	Jul	Aug	Sep	Oct	Nov	Dec
# spKt/V w/ 3tx/wk	64	66	70	69	70	71	73	74	76	72	77	71
# spKt/V >= 1.4 w/3tx/wk	55	54	52	47	56	57	59	60	61	55	60	56
Pop. Mean	1.64	1.56	1.56	1.55	1.61	1.60	1.60	1.61	1.60	1.54	1.58	1.62
Std. Deviation	0.30	0.31	0.30	0.31	0.31	0.29	0.29	0.28	0.33	0.28	0.28	0.32
% >= 1.4 w/3tx/wk	86%	82%	74%	68%	80%	80%	81%	81%	80%	76%	78%	79%



	Jan	Feb	Mar	Apr	May	Jun	Jul	Aug	Sep	Oct	Nov	Dec
# spKt/V	65	67	72	72	73	74	76	77	79	76	81	75
# spKt/V >= 1.2	60	59	63	64	67	67	70	71	68	70	75	68
Pop. Mean	1.63	1.56	1.56	1.54	1.60	1.58	1.59	1.59	1.59	1.52	1.57	1.60
Std. Deviation	0.30	0.31	0.30	0.32	0.31	0.30	0.30	0.29	0.33	0.29	0.29	0.34
% spKt/V >= 1.2	92%	88%	88%	89%	92%	91%	92%	92%	86%	92%	93%	91%



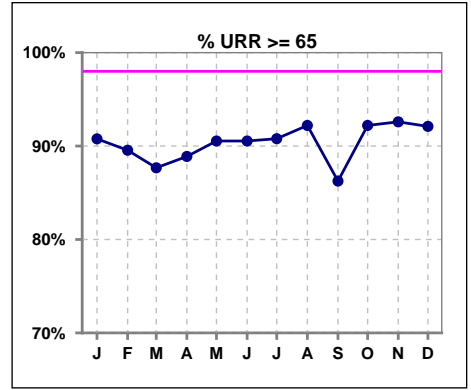
	Jan	Feb	Mar	Apr	May	Jun	Jul	Aug	Sep	Oct	Nov	Dec
# spKt/V w/ 3tx/wk	64	66	70	69	70	71	73	74	76	72	77	71
# spKt/V >= 1.2 w/3tx/wk	59	58	61	63	65	66	69	70	66	68	73	66
Pop. Mean	1.64	1.56	1.56	1.55	1.61	1.60	1.60	1.61	1.60	1.54	1.58	1.62
Std. Deviation	0.30	0.31	0.30	0.31	0.31	0.29	0.29	0.28	0.33	0.28	0.28	0.32
% >= 1.2 w/3tx/wk	92%	88%	87%	91%	93%	93%	95%	95%	87%	94%	95%	93%



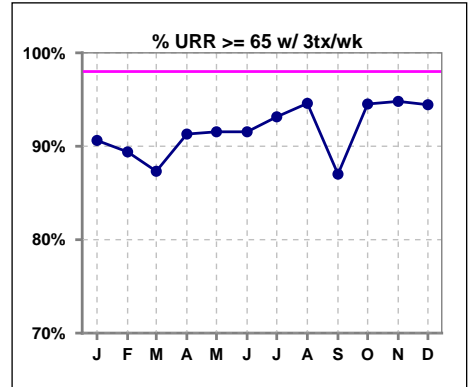
Methodology: a) All labs for 'Adequacy of Dialysis', 'Nutrition', 'Osteodystrophy', 'Anemia' and 'Diabetes' based on last value of month; b) BP's and #L processed are average of all values for month; c) Access data takes last access of month; d) Values for SGA and 'Infection Control' use most recent result.

**I. ADEQUACY OF DIALYSIS - CONT.**

	Jan	Feb	Mar	Apr	May	Jun	Jul	Aug	Sep	Oct	Nov	Dec
# URR	65	67	73	72	74	74	76	77	80	77	81	76
# URR >= 65	59	60	64	64	67	67	69	71	69	71	75	70
Pop. Mean	75	74	73	73	74	74	74	74	74	73	74	75
Std. Deviation	6.79	7.98	7.03	7.59	8.53	6.99	6.97	7.09	8.08	7.68	5.98	7.32
% URR >= 65	91%	90%	88%	89%	91%	91%	91%	92%	86%	92%	93%	92%



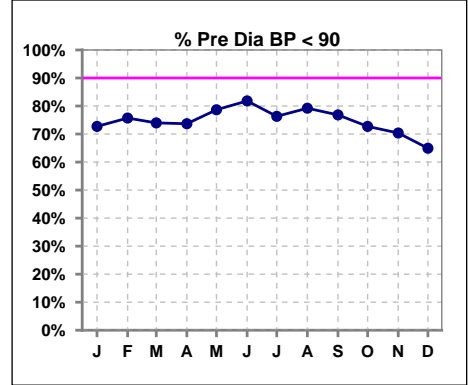
	Jan	Feb	Mar	Apr	May	Jun	Jul	Aug	Sep	Oct	Nov	Dec
# URR w/ 3tx/wk	64	66	71	69	71	71	73	74	77	73	77	72
# URR>=65 w/ 3tx/wk	58	59	62	63	65	65	68	70	67	69	73	68
Pop. Mean	75	74	73	73	74	75	74	75	75	73	74	75
Std. Deviation	6.80	8.01	7.11	7.20	8.51	6.90	6.69	6.74	7.95	7.49	5.71	6.84
% URR>=65 w/ 3tx/wk	91%	89%	87%	91%	92%	92%	93%	95%	87%	95%	95%	94%



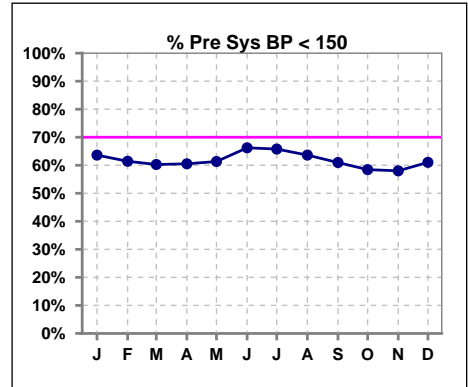
**I. ADEQUACY OF DIALYSIS - CONT.**

**Blood Pressure Control (Pre)**

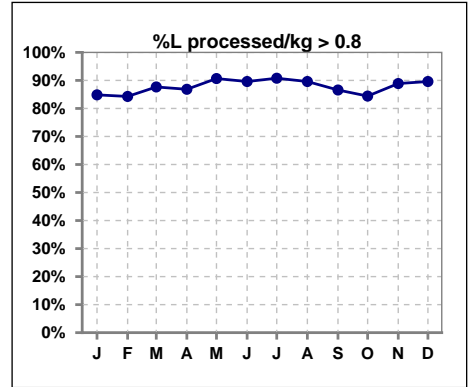
	Jan	Feb	Mar	Apr	May	Jun	Jul	Aug	Sep	Oct	Nov	Dec
# Pre Dia BP	66	70	73	76	75	77	76	77	82	77	81	77
# Pre Dia BP < 90	48	53	54	56	59	63	58	61	63	56	57	50
Pop. Mean	81	81	82	81	81	80	79	79	81	81	81	83
Std. Deviation	13.4	11.3	12.3	12.6	12.3	12.6	13.5	12.9	12.5	12.6	12.0	11.9
% Pre Dia BP < 90	73%	76%	74%	74%	79%	82%	76%	79%	77%	73%	70%	65%



	Jan	Feb	Mar	Apr	May	Jun	Jul	Aug	Sep	Oct	Nov	Dec
# Pre Sys BP	66	70	73	76	75	77	76	77	82	77	81	77
# Pre Sys BP < 150	42	43	44	46	46	51	50	49	50	45	47	47
Pop. Mean	145	146	146	144	144	143	142	142	143	145	145	146
Std. Deviation	17.9	17.6	16.9	19.0	18.3	18.2	18.9	20.0	19.1	19.0	19.5	18.5
%Pre Sys BP <150	64%	61%	60%	61%	61%	66%	66%	64%	61%	58%	58%	61%



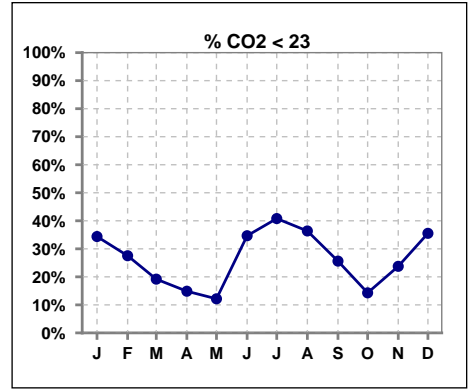
	Jan	Feb	Mar	Apr	May	Jun	Jul	Aug	Sep	Oct	Nov	Dec
# L processed/kg	66	70	73	76	75	77	76	77	82	77	81	77
# L processed/kg>0.8	56	59	64	66	68	69	69	69	71	65	72	69
Pop. Mean	1	1	1	1	1	1	1	1	1	1	1	1
Std. Deviation	0.3	0.3	0.2	0.3	0.2	0.2	0.2	0.2	0.3	0.3	0.3	0.3
% L processed/kg>0.8	85%	84%	88%	87%	91%	90%	91%	90%	87%	84%	89%	90%



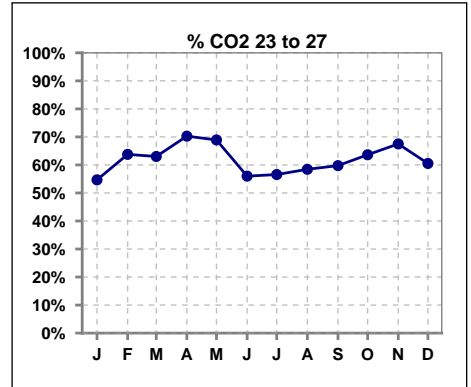
Methodology: a) All labs for 'Adequacy of Dialysis', 'Nutrition', 'Osteodystrophy', 'Anemia' and 'Diabetes' based on last value of month; b) BP's and #L processed are average of all values for month; c) Access data takes last access of month; d) Values for SGA and 'Infection Control' use most recent result.

**I. ADEQUACY OF DIALYSIS - CONT.**

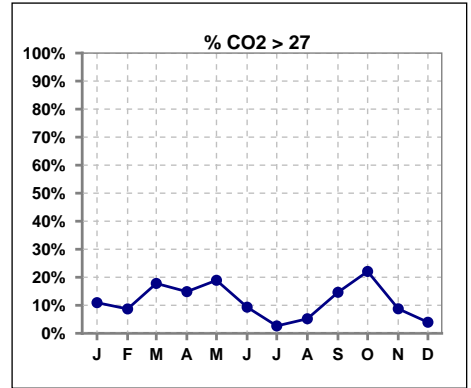
	Jan	Feb	Mar	Apr	May	Jun	Jul	Aug	Sep	Oct	Nov	Dec
# CO2	64	69	73	74	74	75	76	77	82	77	80	76
# CO2 < 23	22	19	14	11	9	26	31	28	21	11	19	27
Pop. Mean	24	24	25	25	26	24	23	24	24	25	24	23
Std. Deviation	2.99	2.65	3.78	2.67	2.56	2.99	2.63	2.56	3.27	3.07	2.98	2.63
% CO2 < 23	34%	28%	19%	15%	12%	35%	41%	36%	26%	14%	24%	36%



	Jan	Feb	Mar	Apr	May	Jun	Jul	Aug	Sep	Oct	Nov	Dec
# CO2	64	69	73	74	74	75	76	77	82	77	80	76
# CO2 23 to 27	35	44	46	52	51	42	43	45	49	49	54	46
Pop. Mean	24	24	25	25	26	24	23	24	24	25	24	23
Std. Deviation	2.99	2.65	3.78	2.67	2.56	2.99	2.63	2.56	3.27	3.07	2.98	2.63
% CO2 23 to 27	55%	64%	63%	70%	69%	56%	57%	58%	60%	64%	68%	61%



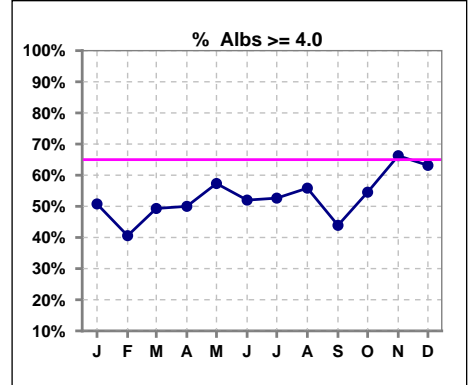
	Jan	Feb	Mar	Apr	May	Jun	Jul	Aug	Sep	Oct	Nov	Dec
# CO2	64	69	73	74	74	75	76	77	82	77	80	76
# CO2 > 27	7	6	13	11	14	7	2	4	12	17	7	3
Pop. Mean	24	24	25	25	26	24	23	24	24	25	24	23
Std. Deviation	2.99	2.65	3.78	2.67	2.56	2.99	2.63	2.56	3.27	3.07	2.98	2.63
% CO2 > 27	11%	9%	18%	15%	19%	9%	3%	5%	15%	22%	9%	4%



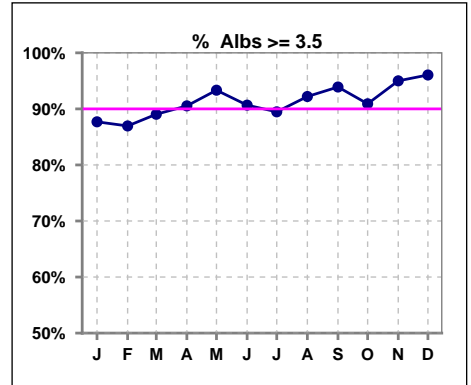
\*Albumin values use BCG method - as of July 2001

**II. NUTRITION**

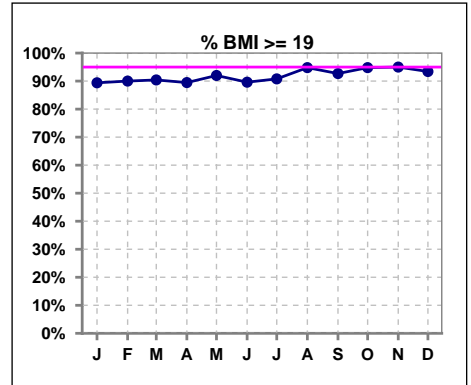
	Jan	Feb	Mar	Apr	May	Jun	Jul	Aug	Sep	Oct	Nov	Dec
# Albumin	65	69	73	74	75	75	76	77	82	77	80	76
# Albumin >= 4.0	33	28	36	37	43	39	40	43	36	42	53	48
Pop. Mean	3.9	3.9	3.9	3.9	4.0	3.9	3.9	4.0	3.9	4.0	4.1	4.0
Std. Deviation	0.39	0.39	0.44	0.40	0.40	0.39	0.45	0.36	0.33	0.33	0.34	0.38
% Alb >= 4.0	51%	41%	49%	50%	57%	52%	53%	56%	44%	55%	66%	63%



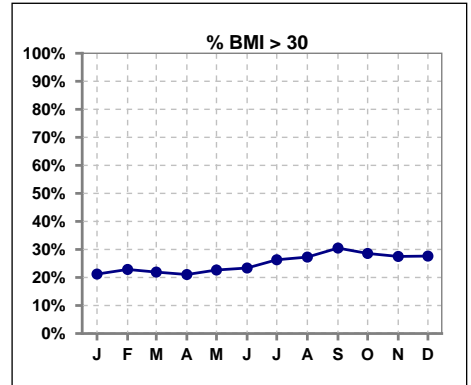
	Jan	Feb	Mar	Apr	May	Jun	Jul	Aug	Sep	Oct	Nov	Dec
# Albumin	65	69	73	74	75	75	76	77	82	77	80	76
# Albumin >= 3.5	57	60	65	67	70	68	68	71	77	70	76	73
Pop. Mean	3.9	3.9	3.9	3.9	4.0	3.9	3.9	4.0	3.9	4.0	4.1	4.0
Std. Deviation	0.39	0.39	0.44	0.40	0.40	0.39	0.45	0.36	0.33	0.33	0.34	0.38
% Alb >= 3.5	88%	87%	89%	91%	93%	91%	89%	92%	94%	91%	95%	96%



	Jan	Feb	Mar	Apr	May	Jun	Jul	Aug	Sep	Oct	Nov	Dec
# BMI	66	70	73	76	75	77	76	77	82	77	80	76
# BMI >= 19	59	63	66	68	69	69	69	73	76	73	76	71
Pop. Mean	26	26	26	26	26	26	26	27	27	26	26	26
Std. Deviation	6.4	6.4	6.2	6.1	6.1	6.1	6.0	6.3	6.5	6.5	6.3	6.4
% BMI >= 19	89%	90%	90%	89%	92%	90%	91%	95%	93%	95%	95%	93%



	Jan	Feb	Mar	Apr	May	Jun	Jul	Aug	Sep	Oct	Nov	Dec
# BMI	66	70	73	76	75	77	76	77	82	77	80	76
# BMI > 30	14	16	16	16	17	18	20	21	25	22	22	21
Pop. Mean	26	26	26	26	26	26	26	27	27	26	26	26
Std. Deviation	6.4	6.4	6.2	6.1	6.1	6.1	6.0	6.3	6.5	6.5	6.3	6.4
% BMI > 30	21%	23%	22%	21%	23%	23%	26%	27%	30%	29%	28%	28%

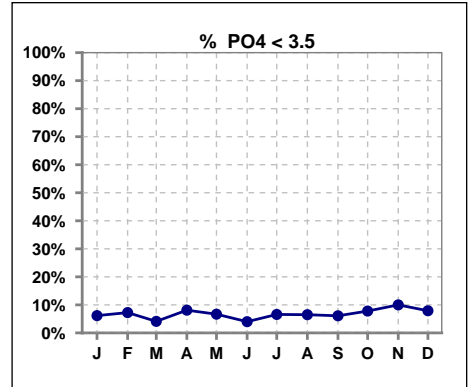


Methodology: a) All labs for 'Adequacy of Dialysis', 'Nutrition', 'Osteodystrophy', 'Anemia' and 'Diabetes' based on last value of month; b) BP's and #L processed are average of all values for month; c) Access data takes last access of month; d) Values for SGA and 'Infection Control' use most recent result.

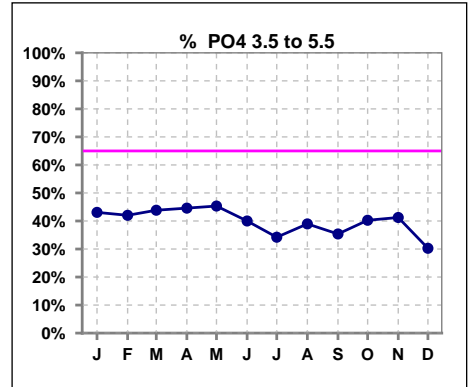
Lab methodology for PTH changed January 2012

**III. OSTEODYSTROPHY**

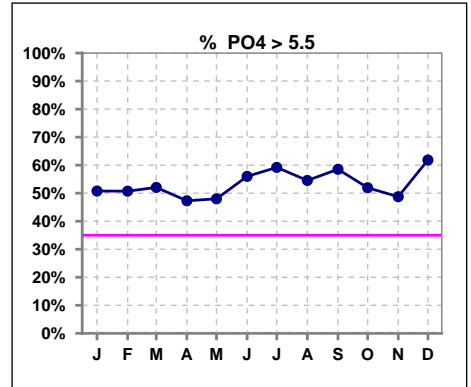
	Jan	Feb	Mar	Apr	May	Jun	Jul	Aug	Sep	Oct	Nov	Dec
# PO4	65	69	73	74	75	75	76	77	82	77	80	76
# PO4 < 3.5	4	5	3	6	5	3	5	5	5	6	8	6
Pop. Mean	5.7	5.8	5.9	5.8	6.1	6.0	6.2	6.1	6.3	5.9	6.0	6.4
Std. Deviation	1.67	1.82	1.89	1.91	2.24	2.13	2.37	1.98	2.10	2.15	2.41	2.22
% PO4 < 3.5	6%	7%	4%	8%	7%	4%	7%	6%	6%	8%	10%	8%



	Jan	Feb	Mar	Apr	May	Jun	Jul	Aug	Sep	Oct	Nov	Dec
# PO4	65	69	73	74	75	75	76	77	82	77	80	76
# PO4 3.5 to 5.5	28	29	32	33	34	30	26	30	29	31	33	23
Pop. Mean	5.7	5.8	5.9	5.8	6.1	6.0	6.2	6.1	6.3	5.9	6.0	6.4
Std. Deviation	1.67	1.82	1.89	1.91	2.24	2.13	2.37	1.98	2.10	2.15	2.41	2.22
% PO4 3.5 to 5.5	43%	42%	44%	45%	45%	40%	34%	39%	35%	40%	41%	30%



	Jan	Feb	Mar	Apr	May	Jun	Jul	Aug	Sep	Oct	Nov	Dec
# PO4	65	69	73	74	75	75	76	77	82	77	80	76
# PO4 > 5.5	33	35	38	35	36	42	45	42	48	40	39	47
Pop. Mean	5.7	5.8	5.9	5.8	6.1	6.0	6.2	6.1	6.3	5.9	6.0	6.4
Std. Deviation	1.67	1.82	1.89	1.91	2.24	2.13	2.37	1.98	2.10	2.15	2.41	2.22
% PO4 > 5.5	51%	51%	52%	47%	48%	56%	59%	55%	59%	52%	49%	62%

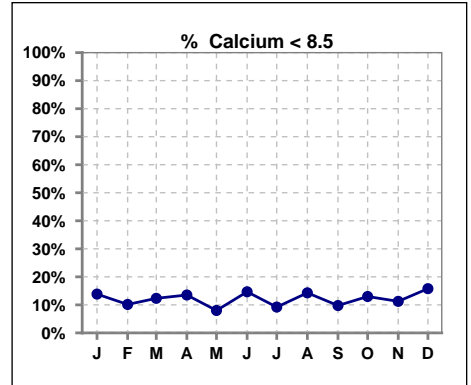


Methodology: a) All labs for 'Adequacy of Dialysis', 'Nutrition', 'Osteodystrophy', 'Anemia' and 'Diabetes' based on last value of month; b) BP's and #L processed are average of all values for month; c) Access data takes last access of month; d) Values for SGA and 'Infection Control' use most recent result.

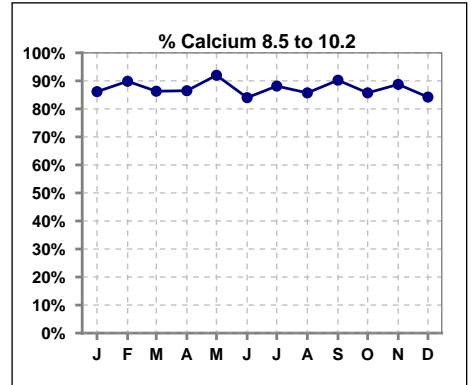
Lab methodology for PTH changed January 2012

**III. OSTEODYSTROPHY - CONT.**

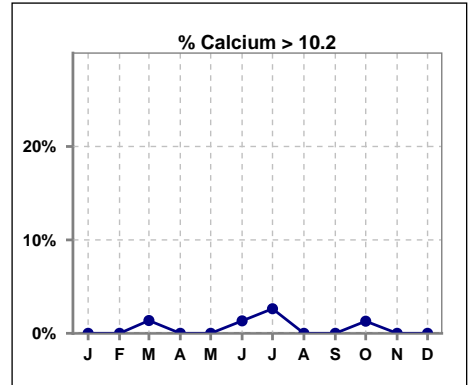
	Jan	Feb	Mar	Apr	May	Jun	Jul	Aug	Sep	Oct	Nov	Dec
# Calcium	65	69	73	74	75	75	76	77	82	77	80	76
# Calcium < 8.5	9	7	9	10	6	11	7	11	8	10	9	12
Pop. Mean	9.2	9.2	9.3	9.2	9.3	9.2	9.3	9.2	9.2	9.2	9.1	9.0
Std. Deviation	0.70	0.65	0.68	0.74	0.56	0.65	0.65	0.60	0.60	0.62	0.75	0.64
% Calcium < 8.5	14%	10%	12%	14%	8%	15%	9%	14%	10%	13%	11%	16%



	Jan	Feb	Mar	Apr	May	Jun	Jul	Aug	Sep	Oct	Nov	Dec
# Calcium	65	69	73	74	75	75	76	77	82	77	80	76
# Calcium 8.5 to 10.2	56	62	63	64	69	63	67	66	74	66	71	64
Pop. Mean	9.2	9.2	9.3	9.2	9.3	9.2	9.3	9.2	9.2	9.2	9.1	9.0
Std. Deviation	0.70	0.65	0.68	0.74	0.56	0.65	0.65	0.60	0.60	0.62	0.75	0.64
% Calcium 8.5 to 10.2	86%	90%	86%	86%	92%	84%	88%	86%	90%	86%	89%	84%



	Jan	Feb	Mar	Apr	May	Jun	Jul	Aug	Sep	Oct	Nov	Dec
# Calcium	65	69	73	74	75	75	76	77	82	77	80	76
# Calcium > 10.2	0	0	1	0	0	1	2	0	0	1	0	0
Pop. Mean	9.2	9.2	9.3	9.2	9.3	9.2	9.3	9.2	9.2	9.2	9.1	9.0
Std. Deviation	0.70	0.65	0.68	0.74	0.56	0.65	0.65	0.60	0.60	0.62	0.75	0.64
% Calcium > 10.2	0%	0%	1%	0%	0%	1%	3%	0%	0%	1%	0%	0%

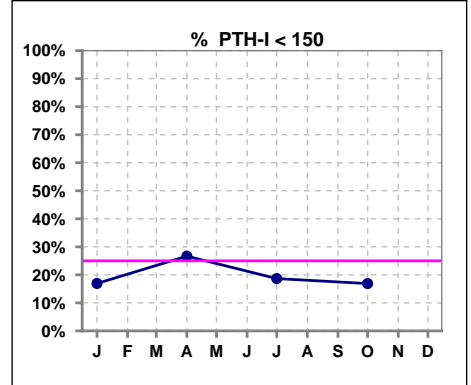


Methodology: a) All labs for 'Adequacy of Dialysis', 'Nutrition', 'Osteodystrophy', 'Anemia' and 'Diabetes' based on last value of month; b) BP's and #L processed are average of all values for month; c) Access data takes last access of month; d) Values for SGA and 'Infection Control' use most recent result.

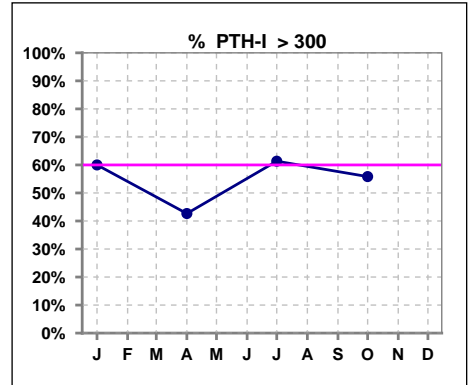
Lab methodology for PTH changed January 2012

**III. OSTEODYSTROPHY - CONT.**

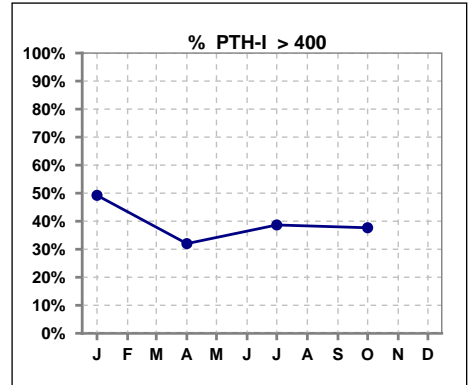
	Jan	Feb	Mar	Apr	May	Jun	Jul	Aug	Sep	Oct	Nov	Dec
# PTH-I	65			75			75			77		
# PTH-I < 150	11			20			14			13		
Pop. Mean	459			377			413			421		
Std. Deviation	397			428			401			414		
% PTH-I < 150	17%			27%			19%			17%		



	Jan	Feb	Mar	Apr	May	Jun	Jul	Aug	Sep	Oct	Nov	Dec
# PTH-I	65			75			75			77		
# PTH-I > 300	39			32			46			43		
Pop. Mean	459			377			413			421		
Std. Deviation	397			428			401			414		
% PTH-I > 300	60%			43%			61%			56%		



	Jan	Feb	Mar	Apr	May	Jun	Jul	Aug	Sep	Oct	Nov	Dec
# PTH-I	65			75			75			77		
# PTH-I > 400	32			24			29			29		
Pop. Mean	459			377			413			421		
Std. Deviation	397			428			401			414		
% PTH-I > 400	49%			32%			39%			38%		

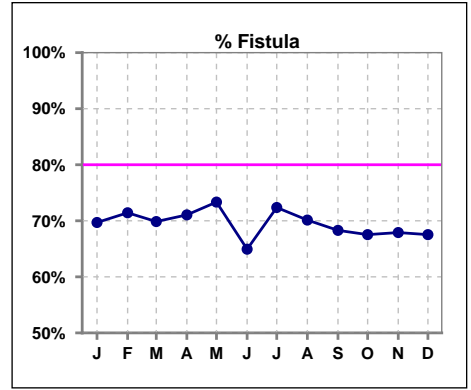


Methodology: a) All labs for 'Adequacy of Dialysis', 'Nutrition', 'Osteodystrophy', 'Anemia' and 'Diabetes' based on last value of month; b) BP's and #L processed are average of all values for month; c) Access data takes last access of month; d) Values for SGA and 'Infection Control' use most recent result.

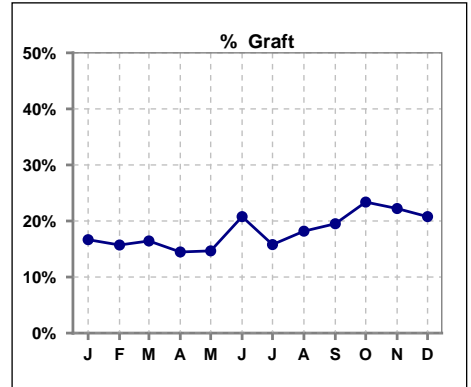


**IV. ACCESS**

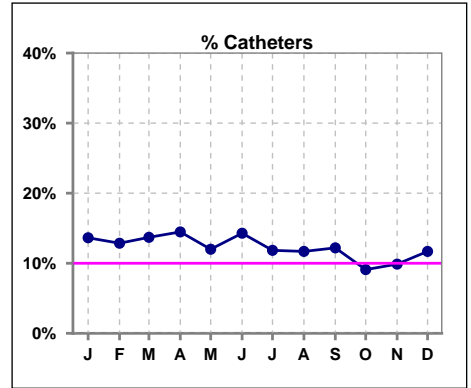
	Jan	Feb	Mar	Apr	May	Jun	Jul	Aug	Sep	Oct	Nov	Dec
# Access	66	70	73	76	75	77	76	77	82	77	81	77
# Fistula	46	50	51	54	55	50	55	54	56	52	55	52
% Fistula	70%	71%	70%	71%	73%	65%	72%	70%	68%	68%	68%	68%



	Jan	Feb	Mar	Apr	May	Jun	Jul	Aug	Sep	Oct	Nov	Dec
# Access	66	70	73	76	75	77	76	77	82	77	81	77
# Graft	11	11	12	11	11	16	12	14	16	18	18	16
% Graft	17%	16%	16%	14%	15%	21%	16%	18%	20%	23%	22%	21%



	Jan	Feb	Mar	Apr	May	Jun	Jul	Aug	Sep	Oct	Nov	Dec
# Access	66	70	73	76	75	77	76	77	82	77	81	77
# Catheters	9	9	10	11	9	11	9	9	10	7	8	9
% Catheters	14%	13%	14%	14%	12%	14%	12%	12%	12%	9%	10%	12%



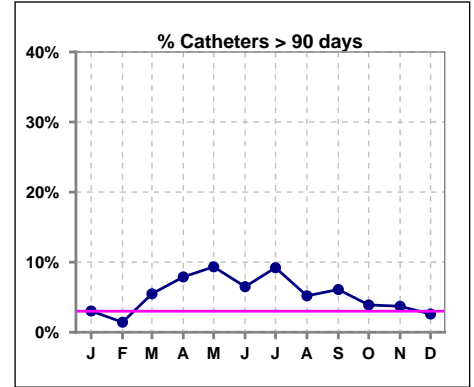
Methodology: a) All labs for 'Adequacy of Dialysis', 'Nutrition', 'Osteodystrophy', 'Anemia' and 'Diabetes' based on last value of month; b) BP's and #L processed are average of all values for month; c) Access data takes last access of month; d) Values for SGA and 'Infection Control' use most recent result.

**IV. ACCESS - CONT.**

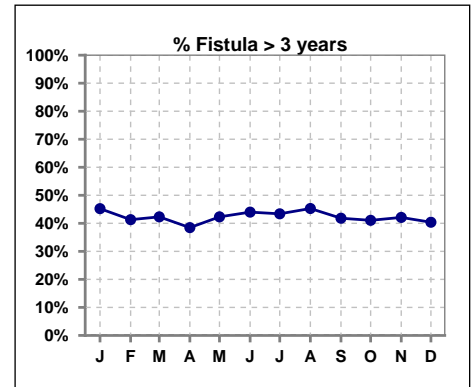
**Catheters > 90 days**

	Jan	Feb	Mar	Apr	May	Jun	Jul	Aug	Sep	Oct	Nov	Dec
# Access	66	70	73	76	75	77	76	77	82	77	81	77
# Catheters	2	1	4	6	7	5	7	4	5	3	3	2
% Catheters	3%	1%	5%	8%	9%	6%	9%	5%	6%	4%	4%	3%

Definition: Catheter in use on last treatment of the month



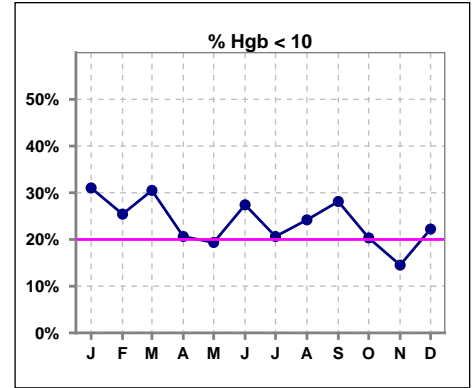
	Jan	Feb	Mar	Apr	May	Jun	Jul	Aug	Sep	Oct	Nov	Dec
# Fistula	42	46	52	52	52	50	53	53	55	56	57	52
# Fistula > 3 yrs	19	19	22	20	22	22	23	24	23	23	24	21
% Fistula > 3 yrs	45%	41%	42%	38%	42%	44%	43%	45%	42%	41%	42%	40%



**V. ANEMIA**

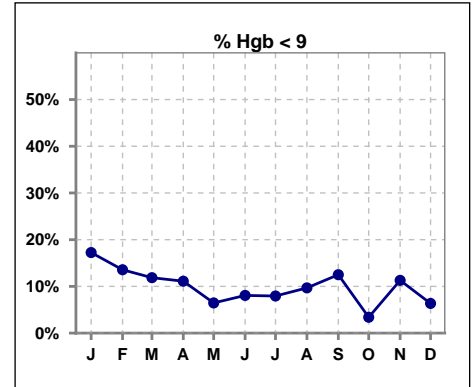
	Jan	Feb	Mar	Apr	May	Jun	Jul	Aug	Sep	Oct	Nov	Dec
# Hgb	58	59	59	63	62	62	63	62	64	59	62	63
# Hgb < 10	18	15	18	13	12	17	13	15	18	12	9	14
Pop. Mean	10.3	10.5	10.4	10.4	10.7	10.6	10.5	10.6	10.4	10.9	10.9	10.8
Std. Deviation	1.3	1.5	1.2	1.1	1.1	1.2	1.1	1.1	1.3	1.1	1.2	1.2
% Hgb < 10	31%	25%	31%	21%	19%	27%	21%	24%	28%	20%	15%	22%

Note: Excludes patients who received no ESA in month.



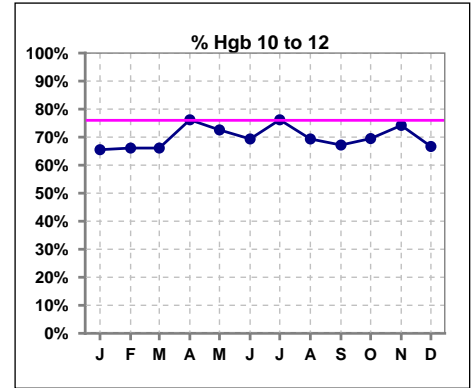
	Jan	Feb	Mar	Apr	May	Jun	Jul	Aug	Sep	Oct	Nov	Dec
# Hgb	58	59	59	63	62	62	63	62	64	59	62	63
# Hgb < 9	10	8	7	7	4	5	5	6	8	2	7	4
Pop. Mean	10.3	10.5	10.4	10.4	10.7	10.6	10.5	10.6	10.4	10.9	10.9	10.8
Std. Deviation	1.3	1.5	1.2	1.1	1.1	1.2	1.1	1.1	1.3	1.1	1.2	1.2
% Hgb < 9	17%	14%	12%	11%	6%	8%	8%	10%	13%	3%	11%	6%

Note: Excludes patients who received no ESA in month.



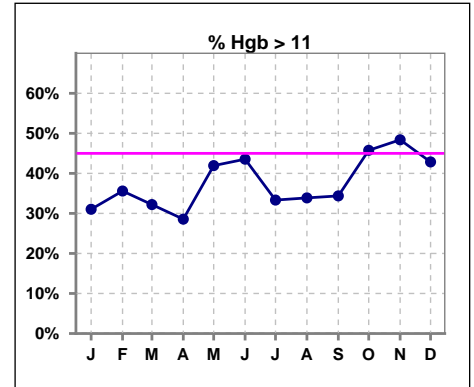
	Jan	Feb	Mar	Apr	May	Jun	Jul	Aug	Sep	Oct	Nov	Dec
# Hgb	58	59	59	63	62	62	63	62	64	59	62	63
# Hgb 10 to 12	38	39	39	48	45	43	48	43	43	41	46	42
Pop. Mean	10.3	10.5	10.4	10.4	10.7	10.6	10.5	10.6	10.4	10.9	10.9	10.8
Std. Deviation	1.3	1.5	1.2	1.1	1.1	1.2	1.1	1.1	1.3	1.1	1.2	1.2
% Hgb 10 to 12	66%	66%	66%	76%	73%	69%	76%	69%	67%	69%	74%	67%

Note: Excludes patients who received no ESA in month.



	Jan	Feb	Mar	Apr	May	Jun	Jul	Aug	Sep	Oct	Nov	Dec
# Hgb	58	59	59	63	62	62	63	62	64	59	62	63
# Hgb > 11	18	21	19	18	26	27	21	21	22	27	30	27
Pop. Mean	10.3	10.5	10.4	10.4	10.7	10.6	10.5	10.6	10.4	10.9	10.9	10.8
Std. Deviation	1.3	1.5	1.2	1.1	1.1	1.2	1.1	1.1	1.3	1.1	1.2	1.2
% Hgb > 11	31%	36%	32%	29%	42%	44%	33%	34%	34%	46%	48%	43%

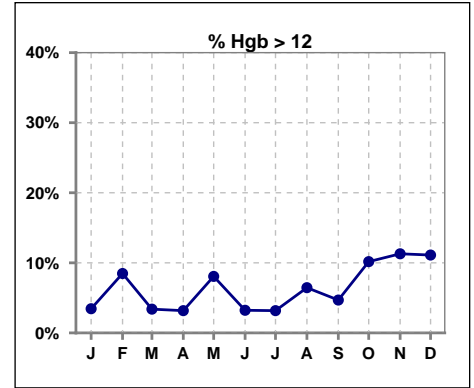
Note: Excludes patients who received no ESA in month.



**V. ANEMIA - CONT.**

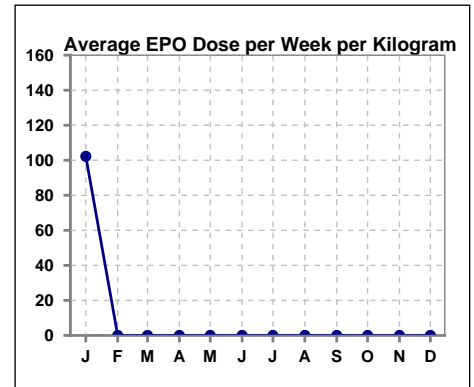
	Jan	Feb	Mar	Apr	May	Jun	Jul	Aug	Sep	Oct	Nov	Dec
# Hgb	58	59	59	63	62	62	63	62	64	59	62	63
# Hgb > 12	2	5	2	2	5	2	2	4	3	6	7	7
Pop. Mean	10.3	10.5	10.4	10.4	10.7	10.6	10.5	10.6	10.4	10.9	10.9	10.8
Std. Deviation	1.3	1.5	1.2	1.1	1.1	1.2	1.1	1.1	1.3	1.1	1.2	1.2
% Hgb > 12	3%	8%	3%	3%	8%	3%	3%	6%	5%	10%	11%	11%

Note: Excludes patients who received no ESA in month.



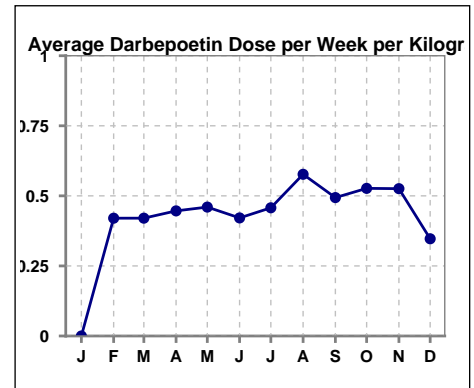
**Average EPO Dose per Week per Kilogram**

	Jan	Feb	Mar	Apr	May	Jun	Jul	Aug	Sep	Oct	Nov	Dec
# Average EPO	102.2	0	0	0	0	0	0	0	0	0	0	0



**Average Darbeopetin Dose per Week per Kilogram**

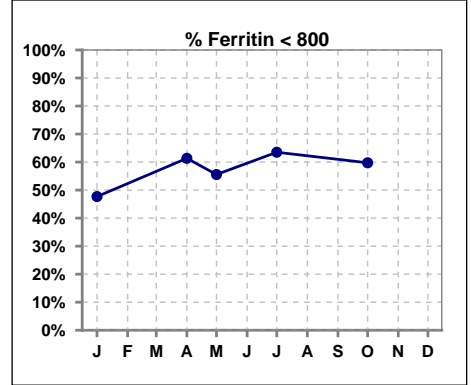
	Jan	Feb	Mar	Apr	May	Jun	Jul	Aug	Sep	Oct	Nov	Dec
# Average Darbeopetin	0	.4	.4	.4	.5	.4	.5	.6	.5	.5	.5	.3



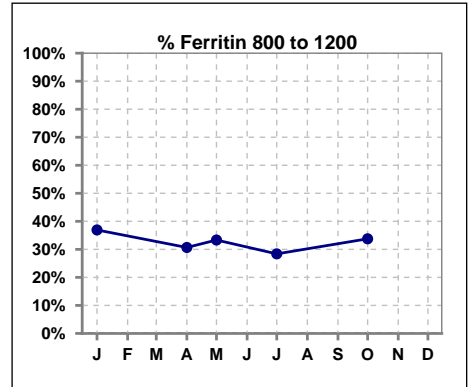
**V. ANEMIA - CONT.**

**Iron Profile**

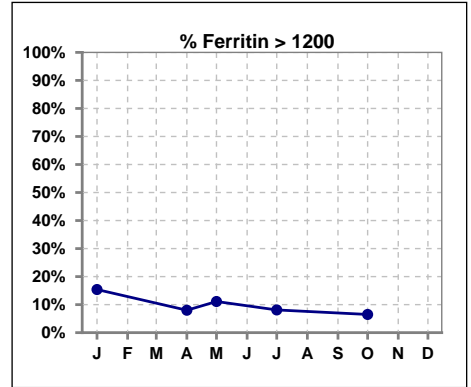
	Jan	Feb	Mar	Apr	May	Jun	Jul	Aug	Sep	Oct	Nov	Dec
# Ferritin	65			75	18		74			77		
# Ferritin < 800	31			46	10		47			46		
Pop. Mean	1003			730	797		747			703		
Std. Deviation	1437			332	503		467			339		
<b>% Ferritin &lt; 800</b>	<b>48%</b>			<b>61%</b>	<b>56%</b>		<b>64%</b>			<b>60%</b>		



	Jan	Feb	Mar	Apr	May	Jun	Jul	Aug	Sep	Oct	Nov	Dec
# Ferritin	65			75	18		74			77		
# Ferritin 800 to 1200	24			23	6		21			26		
Pop. Mean	1003			730	797		747			703		
Std. Deviation	1437			332	503		467			339		
<b>% Ferritin 800 to 1200</b>	<b>37%</b>			<b>31%</b>	<b>33%</b>		<b>28%</b>			<b>34%</b>		

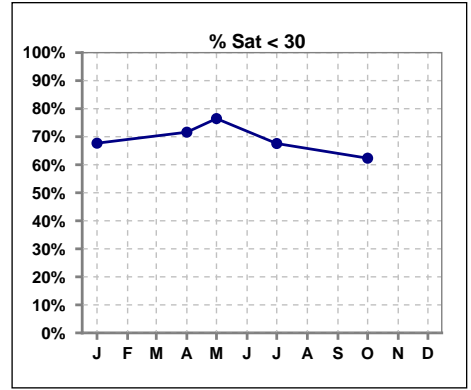


	Jan	Feb	Mar	Apr	May	Jun	Jul	Aug	Sep	Oct	Nov	Dec
# Ferritin	65			75	18		74			77		
# Ferritin > 1200	10			6	2		6			5		
Pop. Mean	1003			730	797		747			703		
Std. Deviation	1437			332	503		467			339		
<b>% Ferritin &gt; 1200</b>	<b>15%</b>			<b>8%</b>	<b>11%</b>		<b>8%</b>			<b>6%</b>		

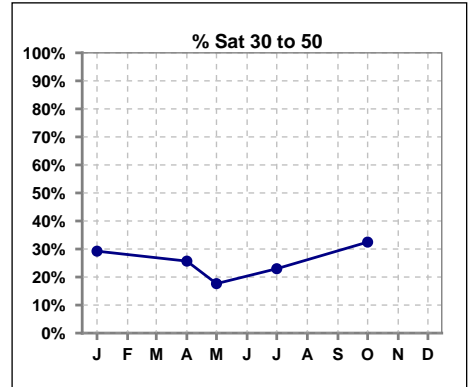


**V. ANEMIA - CONT.**

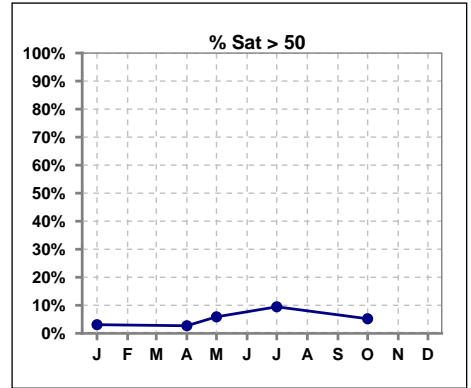
	Jan	Feb	Mar	Apr	May	Jun	Jul	Aug	Sep	Oct	Nov	Dec
# % Sat	65			74	17		74			77		
# % Sat < 30	44			53	13		50			48		
Pop. Mean	26			26	25		28			28		
Std. Deviation	11			13	12		16			12		
<b>% % Sat &lt; 30</b>	<b>68%</b>			<b>72%</b>	<b>76%</b>		<b>68%</b>			<b>62%</b>		



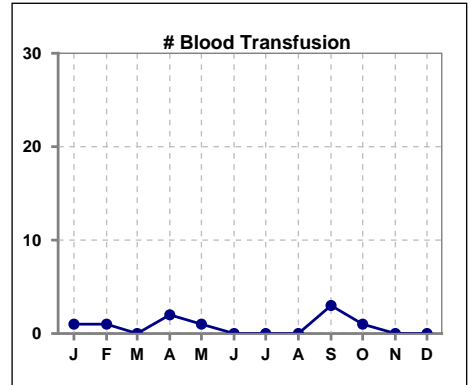
	Jan	Feb	Mar	Apr	May	Jun	Jul	Aug	Sep	Oct	Nov	Dec
# % Sat	65			74	17		74			77		
# % Sat 30 to 50	19			19	3		17			25		
Pop. Mean	26			26	25		28			28		
Std. Deviation	11			13	12		16			12		
<b>% % Sat 30 to 50</b>	<b>29%</b>			<b>26%</b>	<b>18%</b>		<b>23%</b>			<b>32%</b>		



	Jan	Feb	Mar	Apr	May	Jun	Jul	Aug	Sep	Oct	Nov	Dec
# % Sat	65			74	17		74			77		
# % Sat > 50	2			2	1		7			4		
Pop. Mean	26			26	25		28			28		
Std. Deviation	11			13	12		16			12		
<b>% % Sat &gt; 50</b>	<b>3%</b>			<b>3%</b>	<b>6%</b>		<b>9%</b>			<b>5%</b>		



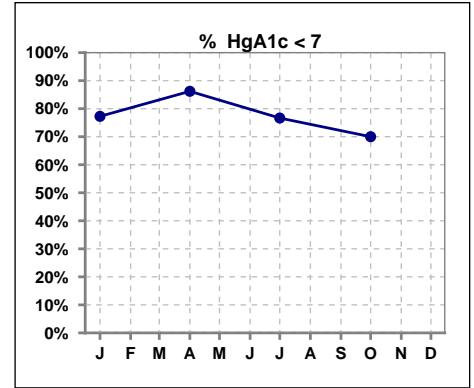
	Jan	Feb	Mar	Apr	May	Jun	Jul	Aug	Sep	Oct	Nov	Dec
# Patient	66	70	74	76	76	77	78	77	82	80	82	78
# Blood Transfusion	1	1	0	2	1	0	0	0	3	1	0	0



Methodology: a) All labs for 'Adequacy of Dialysis', 'Nutrition', 'Osteodystrophy', 'Anemia' and 'Diabetes' based on last value of month; b) BP's and #L processed are average of all values for month; c) Access data takes last access of month; d) Values for SGA and 'Infection Control' use most recent result.

**VI. Diabetes**

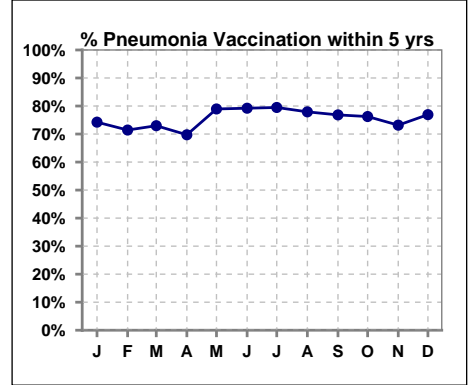
	Jan	Feb	Mar	Apr	May	Jun	Jul	Aug	Sep	Oct	Nov	Dec
# HgA1c	22			29			30			30		
# HgA1c < 7	17			25			23			21		
Pop. Mean	6.5			6.2			6.3			6.4		
Std. Deviation	1.15			1.12			1.12			1.34		
<b>% HgA1c &lt; 7</b>	<b>77%</b>			<b>86%</b>			<b>77%</b>			<b>70%</b>		



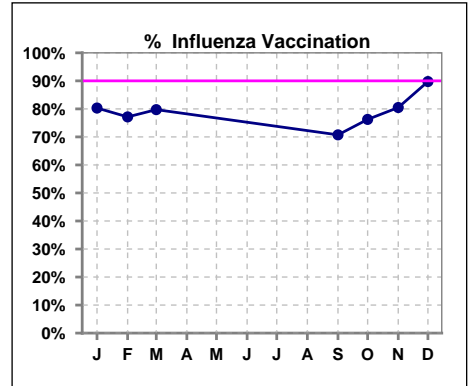
**VII. Infection Control**

**Pneumonia vaccination within the past five years**

	Jan	Feb	Mar	Apr	May	Jun	Jul	Aug	Sep	Oct	Nov	Dec
# Patient	66	70	74	76	76	77	78	77	82	80	82	78
# Pneumonia	49	50	54	53	60	61	62	60	63	61	60	60
% Pneumonia	74%	71%	73%	70%	79%	79%	79%	78%	77%	76%	73%	77%



	Jan	Feb	Mar	Apr	May	Jun	Jul	Aug	Sep	Oct	Nov	Dec
# Patient	66	70	74						82	80	82	78
# Influenza	53	54	59						58	61	66	70
% Influenza	80%	77%	80%						71%	76%	80%	90%

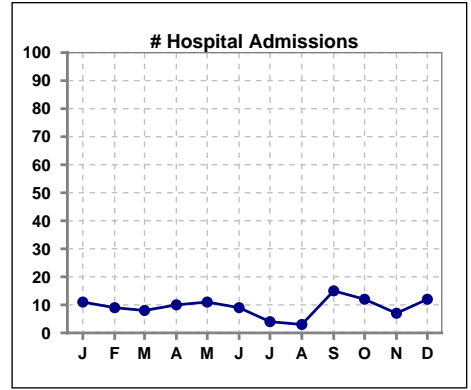


Methodology: a) All labs for 'Adequacy of Dialysis', 'Nutrition', 'Osteodystrophy', 'Anemia' and 'Diabetes' based on last value of month; b) BP's and #L processed are average of all values for month; c) Access data takes last access of month; d) Values for SGA and 'Infection Control' use most recent result.

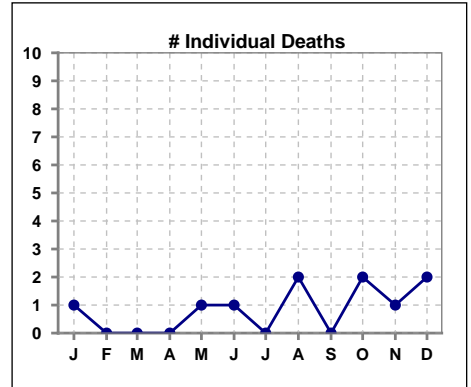


**VIII. Outcome measures**

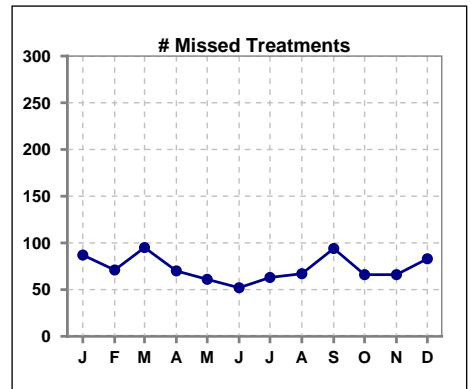
	Jan	Feb	Mar	Apr	May	Jun	Jul	Aug	Sep	Oct	Nov	Dec
# Patient	66	70	74	76	76	77	78	77	82	80	82	78
# Hospital Admissions	11	9	8	10	11	9	4	3	15	12	7	12



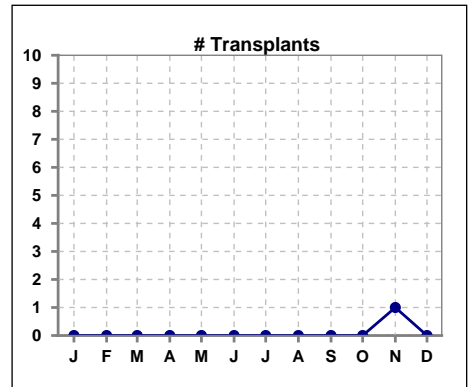
	Jan	Feb	Mar	Apr	May	Jun	Jul	Aug	Sep	Oct	Nov	Dec
# Patient	66	70	74	76	76	77	78	77	82	80	82	78
# Individual Deaths	1	0	0	0	1	1	0	2	0	2	1	2



	Jan	Feb	Mar	Apr	May	Jun	Jul	Aug	Sep	Oct	Nov	Dec
# Patient	66	70	74	76	76	77	78	77	82	80	82	78
# Missed Treatments	87	71	95	70	61	52	63	67	94	66	66	83



	Jan	Feb	Mar	Apr	May	Jun	Jul	Aug	Sep	Oct	Nov	Dec
# Patient	66	70	74	76	76	77	78	77	82	80	82	78
# Transplants	0	0	0	0	0	0	0	0	0	0	1	0



Methodology: a) All labs for 'Adequacy of Dialysis', 'Nutrition', 'Osteodystrophy', 'Anemia' and 'Diabetes' based on last value of month; b) BP's and #L processed are average of all values for month; c) Access data takes last access of month; d) Values for SGA and 'Infection Control' use most recent result.