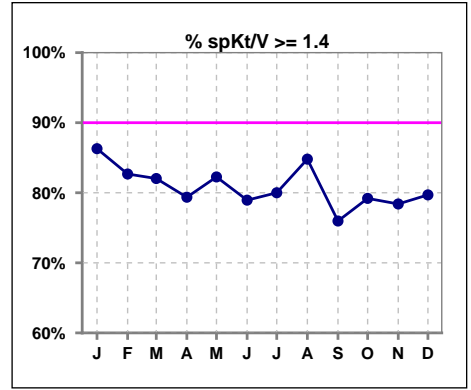
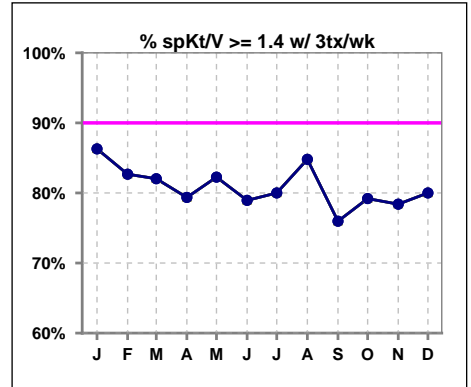


I. ADEQUACY OF DIALYSIS

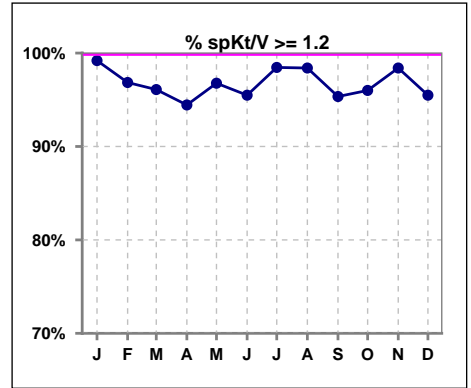
	Jan	Feb	Mar	Apr	May	Jun	Jul	Aug	Sep	Oct	Nov	Dec
# spKt/V	124	127	128	126	124	133	130	125	129	125	125	133
# spKt/V >= 1.4	107	105	105	100	102	105	104	106	98	99	98	106
Pop. Mean	1.67	1.64	1.65	1.63	1.63	1.61	1.67	1.66	1.62	1.64	1.63	1.66
Std. Deviation	0.29	0.28	0.27	0.29	0.28	0.27	0.28	0.27	0.31	0.30	0.28	0.35
% spKt/V >= 1.4	86%	83%	82%	79%	82%	79%	80%	85%	76%	79%	78%	80%



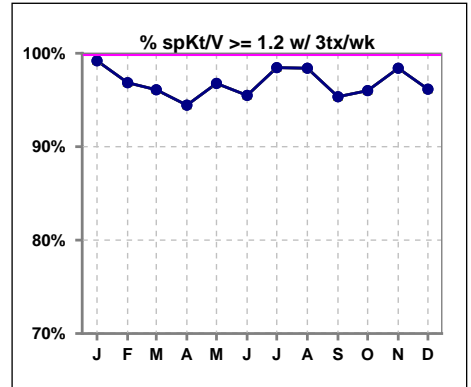
	Jan	Feb	Mar	Apr	May	Jun	Jul	Aug	Sep	Oct	Nov	Dec
# spKt/V w/ 3tx/wk	124	127	128	126	124	133	130	125	129	125	125	130
# spKt/V >= 1.4 w/3tx/wk	107	105	105	100	102	105	104	106	98	99	98	104
Pop. Mean	1.67	1.64	1.65	1.63	1.63	1.61	1.67	1.66	1.62	1.64	1.63	1.68
Std. Deviation	0.29	0.28	0.27	0.29	0.28	0.27	0.28	0.27	0.31	0.30	0.28	0.34
% >= 1.4 w/3tx/wk	86%	83%	82%	79%	82%	79%	80%	85%	76%	79%	78%	80%



	Jan	Feb	Mar	Apr	May	Jun	Jul	Aug	Sep	Oct	Nov	Dec
# spKt/V	124	127	128	126	124	133	130	125	129	125	125	133
# spKt/V >= 1.2	123	123	123	119	120	127	128	123	123	120	123	127
Pop. Mean	1.67	1.64	1.65	1.63	1.63	1.61	1.67	1.66	1.62	1.64	1.63	1.66
Std. Deviation	0.29	0.28	0.27	0.29	0.28	0.27	0.28	0.27	0.31	0.30	0.28	0.35
% spKt/V >= 1.2	99%	97%	96%	94%	97%	95%	98%	98%	95%	96%	98%	95%



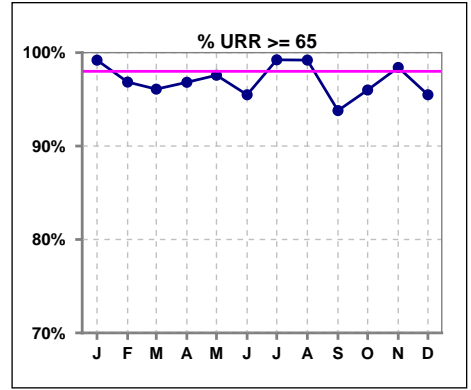
	Jan	Feb	Mar	Apr	May	Jun	Jul	Aug	Sep	Oct	Nov	Dec
# spKt/V w/ 3tx/wk	124	127	128	126	124	133	130	125	129	125	125	130
# spKt/V >= 1.2 w/3tx/wk	123	123	123	119	120	127	128	123	123	120	123	125
Pop. Mean	1.67	1.64	1.65	1.63	1.63	1.61	1.67	1.66	1.62	1.64	1.63	1.68
Std. Deviation	0.29	0.28	0.27	0.29	0.28	0.27	0.28	0.27	0.31	0.30	0.28	0.34
% >= 1.2 w/3tx/wk	99%	97%	96%	94%	97%	95%	98%	98%	95%	96%	98%	96%



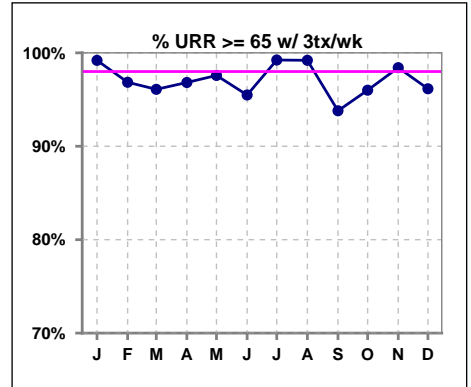
Methodology: a) All labs for 'Adequacy of Dialysis', 'Nutrition', 'Osteodystrophy', 'Anemia' and 'Diabetes' based on last value of month; b) BP's and #L processed are average of all values for month; c) Access data takes last access of month; d) Values for SGA and 'Infection Control' use most recent result.

I. ADEQUACY OF DIALYSIS - CONT.

	Jan	Feb	Mar	Apr	May	Jun	Jul	Aug	Sep	Oct	Nov	Dec
# URR	124	127	128	126	124	133	130	125	129	125	126	133
# URR >= 65	123	123	123	122	121	127	129	124	121	120	124	127
Pop. Mean	76	76	76	75	75	75	76	76	75	76	75	75
Std. Deviation	5.20	6.12	5.51	5.85	6.04	5.75	5.29	5.21	6.71	6.08	7.01	7.68
% URR >= 65	99%	97%	96%	97%	98%	95%	99%	99%	94%	96%	98%	95%



	Jan	Feb	Mar	Apr	May	Jun	Jul	Aug	Sep	Oct	Nov	Dec
# URR w/ 3tx/wk	124	127	128	126	124	133	130	125	129	125	126	130
# URR>=65 w/ 3tx/wk	123	123	123	122	121	127	129	124	121	120	124	125
Pop. Mean	76	76	76	75	75	75	76	76	75	76	75	76
Std. Deviation	5.20	6.12	5.51	5.85	6.04	5.75	5.29	5.21	6.71	6.08	7.01	6.81
% URR>=65 w/ 3tx/wk	99%	97%	96%	97%	98%	95%	99%	99%	94%	96%	98%	96%

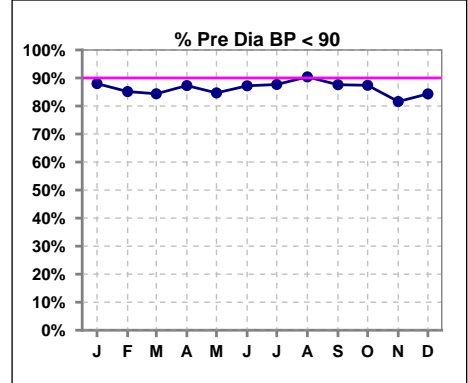


Methodology: a) All labs for 'Adequacy of Dialysis', 'Nutrition', 'Osteodystrophy', 'Anemia' and 'Diabetes' based on last value of month; b) BP's and #L processed are average of all values for month; c) Access data takes last access of month; d) Values for SGA and 'Infection Control' use most recent result.

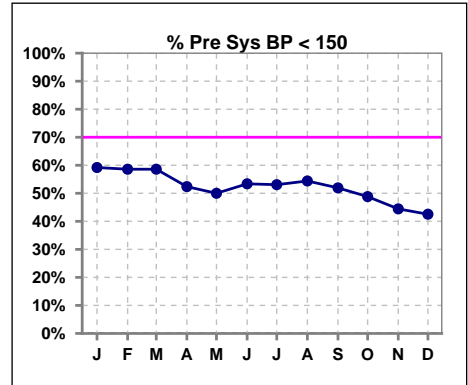
I. ADEQUACY OF DIALYSIS - CONT.

Blood Pressure Control (Pre)

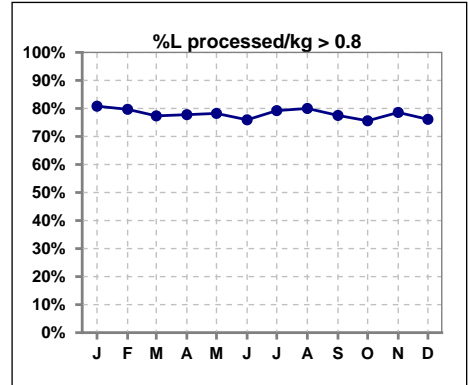
	Jan	Feb	Mar	Apr	May	Jun	Jul	Aug	Sep	Oct	Nov	Dec
# Pre Dia BP	125	128	128	126	124	133	130	125	129	127	125	134
# Pre Dia BP < 90	110	109	108	110	105	116	114	113	113	111	102	113
Pop. Mean	76	76	77	77	77	76	76	76	77	77	78	79
Std. Deviation	12.9	13.0	12.7	12.5	12.4	12.9	12.3	12.4	12.8	13.0	12.8	12.1
% Pre Dia BP < 90	88%	85%	84%	87%	85%	87%	88%	90%	88%	87%	82%	84%



	Jan	Feb	Mar	Apr	May	Jun	Jul	Aug	Sep	Oct	Nov	Dec
# Pre Sys BP	125	128	128	126	124	133	130	125	129	127	126	134
# Pre Sys BP < 150	74	75	75	66	62	71	69	68	67	62	56	57
Pop. Mean	148	148	148	150	150	148	147	148	150	149	151	152
Std. Deviation	18.7	19.2	19.1	20.4	20.9	23.7	20.0	21.0	20.7	21.7	21.7	20.1
%Pre Sys BP <150	59%	59%	59%	52%	50%	53%	53%	54%	52%	49%	44%	43%



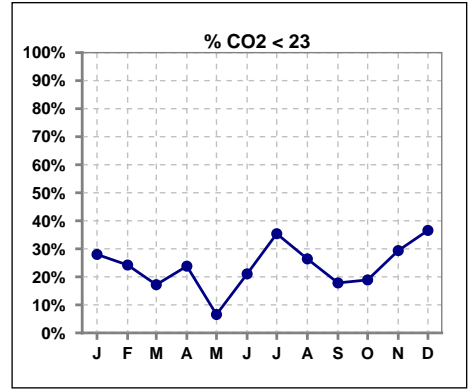
	Jan	Feb	Mar	Apr	May	Jun	Jul	Aug	Sep	Oct	Nov	Dec
# L processed/kg	125	128	128	126	124	133	130	125	129	127	126	134
# L processed/kg>0.8	101	102	99	98	97	101	103	100	100	96	99	102
Pop. Mean	1	1	1	1	1	1	1	1	1	1	1	1
Std. Deviation	0.3	0.3	0.3	0.3	0.3	0.3	0.3	0.3	0.3	0.3	0.3	0.3
% L processed/kg>0.8	81%	80%	77%	78%	78%	76%	79%	80%	78%	76%	79%	76%



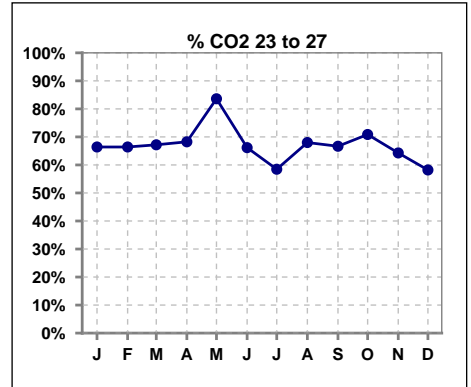
Methodology: a) All labs for 'Adequacy of Dialysis', 'Nutrition', 'Osteodystrophy', 'Anemia' and 'Diabetes' based on last value of month; b) BP's and #L processed are average of all values for month; c) Access data takes last access of month; d) Values for SGA and 'Infection Control' use most recent result.

I. ADEQUACY OF DIALYSIS - CONT.

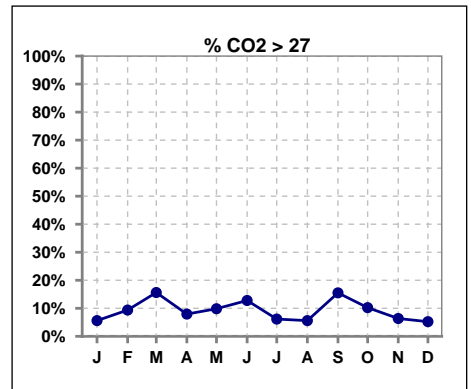
	Jan	Feb	Mar	Apr	May	Jun	Jul	Aug	Sep	Oct	Nov	Dec
# CO2	125	128	128	126	122	133	130	125	129	127	126	134
# CO2 < 23	35	31	22	30	8	28	46	33	23	24	37	49
Pop. Mean	24	24	25	24	25	25	23	24	25	25	24	23
Std. Deviation	2.51	2.96	2.79	2.42	2.05	2.31	2.69	2.29	2.40	2.41	2.89	2.81
% CO2 < 23	28%	24%	17%	24%	7%	21%	35%	26%	18%	19%	29%	37%



	Jan	Feb	Mar	Apr	May	Jun	Jul	Aug	Sep	Oct	Nov	Dec
# CO2	125	128	128	126	122	133	130	125	129	127	126	134
# CO2 23 to 27	83	85	86	86	102	88	76	85	86	90	81	78
Pop. Mean	24	24	25	24	25	25	23	24	25	25	24	23
Std. Deviation	2.51	2.96	2.79	2.42	2.05	2.31	2.69	2.29	2.40	2.41	2.89	2.81
% CO2 23 to 27	66%	66%	67%	68%	84%	66%	58%	68%	67%	71%	64%	58%



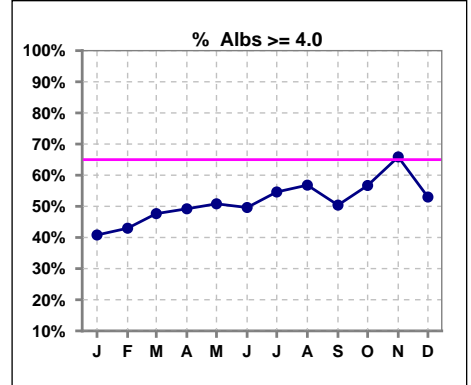
	Jan	Feb	Mar	Apr	May	Jun	Jul	Aug	Sep	Oct	Nov	Dec
# CO2	125	128	128	126	122	133	130	125	129	127	126	134
# CO2 > 27	7	12	20	10	12	17	8	7	20	13	8	7
Pop. Mean	24	24	25	24	25	25	23	24	25	25	24	23
Std. Deviation	2.51	2.96	2.79	2.42	2.05	2.31	2.69	2.29	2.40	2.41	2.89	2.81
% CO2 > 27	6%	9%	16%	8%	10%	13%	6%	6%	16%	10%	6%	5%



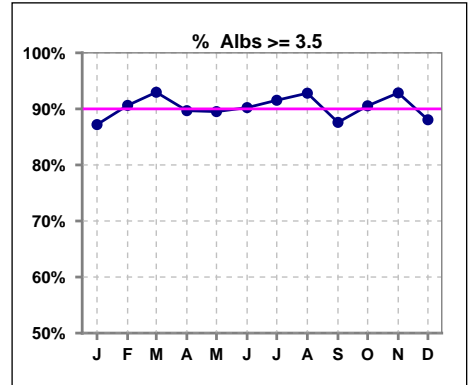
*Albumin values use BCG method - as of July 2001

II. NUTRITION

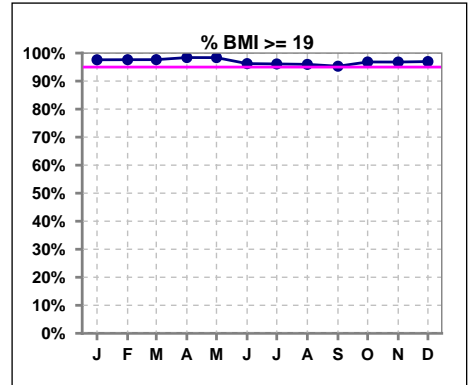
	Jan	Feb	Mar	Apr	May	Jun	Jul	Aug	Sep	Oct	Nov	Dec
# Albumin	125	128	128	126	124	133	130	125	129	127	126	134
# Albumin >= 4.0	51	55	61	62	63	66	71	71	65	72	83	71
Pop. Mean	3.8	3.8	3.9	3.9	3.9	3.9	3.9	3.9	3.9	3.9	4.1	3.9
Std. Deviation	0.37	0.33	0.32	0.34	0.33	0.36	0.33	0.33	0.38	0.35	0.40	0.43
% Alb >= 4.0	41%	43%	48%	49%	51%	50%	55%	57%	50%	57%	66%	53%



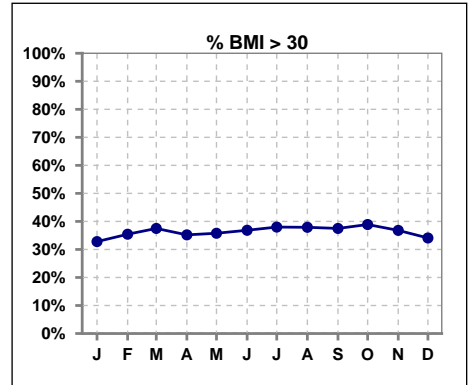
	Jan	Feb	Mar	Apr	May	Jun	Jul	Aug	Sep	Oct	Nov	Dec
# Albumin	125	128	128	126	124	133	130	125	129	127	126	134
# Albumin >= 3.5	109	116	119	113	111	120	119	116	113	115	117	118
Pop. Mean	3.8	3.8	3.9	3.9	3.9	3.9	3.9	3.9	3.9	3.9	4.1	3.9
Std. Deviation	0.37	0.33	0.32	0.34	0.33	0.36	0.33	0.33	0.38	0.35	0.40	0.43
% Alb >= 3.5	87%	91%	93%	90%	90%	90%	92%	93%	88%	91%	93%	88%



	Jan	Feb	Mar	Apr	May	Jun	Jul	Aug	Sep	Oct	Nov	Dec
# BMI	125	127	128	125	123	133	129	124	128	126	125	132
# BMI >= 19	122	124	125	123	121	128	124	119	122	122	121	128
Pop. Mean	29	30	30	30	30	30	30	29	29	30	30	29
Std. Deviation	8.1	8.3	8.4	7.9	8.0	8.3	7.9	7.9	7.9	7.8	8.0	7.8
% BMI >= 19	98%	98%	98%	98%	98%	96%	96%	96%	95%	97%	97%	97%



	Jan	Feb	Mar	Apr	May	Jun	Jul	Aug	Sep	Oct	Nov	Dec
# BMI	125	127	128	125	123	133	129	124	128	126	125	132
# BMI > 30	41	45	48	44	44	49	49	47	48	49	46	45
Pop. Mean	29	30	30	30	30	30	30	29	29	30	30	29
Std. Deviation	8.1	8.3	8.4	7.9	8.0	8.3	7.9	7.9	7.9	7.8	8.0	7.8
% BMI > 30	33%	35%	38%	35%	36%	37%	38%	38%	38%	39%	37%	34%

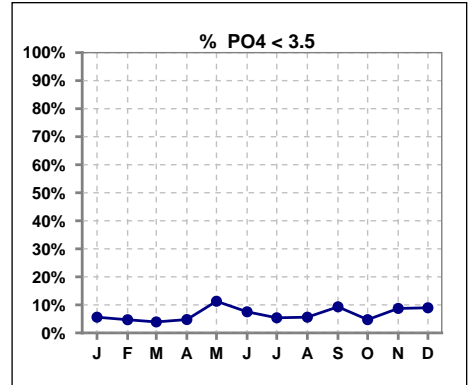


Methodology: a) All labs for 'Adequacy of Dialysis', 'Nutrition', 'Osteodystrophy', 'Anemia' and 'Diabetes' based on last value of month; b) BP's and #L processed are average of all values for month; c) Access data takes last access of month; d) Values for SGA and 'Infection Control' use most recent result.

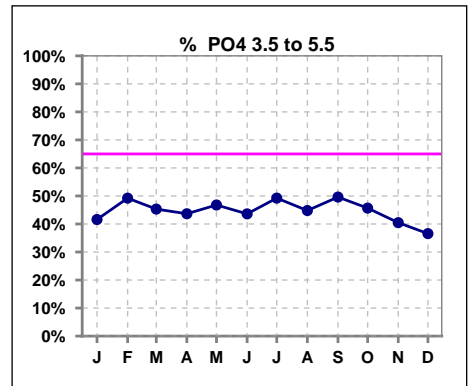
Lab methodology for PTH changed January 2012

III. OSTEODYSTROPHY

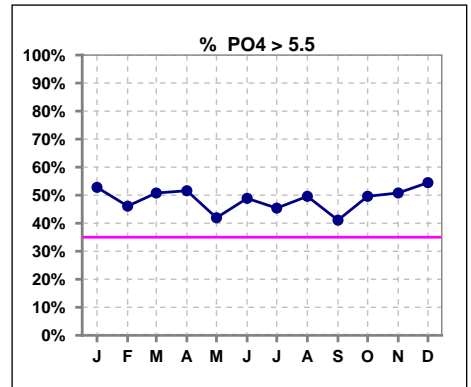
	Jan	Feb	Mar	Apr	May	Jun	Jul	Aug	Sep	Oct	Nov	Dec
# PO4	125	128	128	126	124	133	130	125	129	127	126	134
# PO4 < 3.5	7	6	5	6	14	10	7	7	12	6	11	12
Pop. Mean	5.7	5.7	5.7	5.8	5.5	5.8	5.6	5.7	5.6	5.9	5.7	5.9
Std. Deviation	1.41	1.62	1.55	1.77	1.83	1.80	1.88	1.62	1.83	1.80	1.81	1.84
% PO4 < 3.5	6%	5%	4%	5%	11%	8%	5%	6%	9%	5%	9%	9%



	Jan	Feb	Mar	Apr	May	Jun	Jul	Aug	Sep	Oct	Nov	Dec
# PO4	125	128	128	126	124	133	130	125	129	127	126	134
# PO4 3.5 to 5.5	52	63	58	55	58	58	64	56	64	58	51	49
Pop. Mean	5.7	5.7	5.7	5.8	5.5	5.8	5.6	5.7	5.6	5.9	5.7	5.9
Std. Deviation	1.41	1.62	1.55	1.77	1.83	1.80	1.88	1.62	1.83	1.80	1.81	1.84
% PO4 3.5 to 5.5	42%	49%	45%	44%	47%	44%	49%	45%	50%	46%	40%	37%



	Jan	Feb	Mar	Apr	May	Jun	Jul	Aug	Sep	Oct	Nov	Dec
# PO4	125	128	128	126	124	133	130	125	129	127	126	134
# PO4 > 5.5	66	59	65	65	52	65	59	62	53	63	64	73
Pop. Mean	5.7	5.7	5.7	5.8	5.5	5.8	5.6	5.7	5.6	5.9	5.7	5.9
Std. Deviation	1.41	1.62	1.55	1.77	1.83	1.80	1.88	1.62	1.83	1.80	1.81	1.84
% PO4 > 5.5	53%	46%	51%	52%	42%	49%	45%	50%	41%	50%	51%	54%

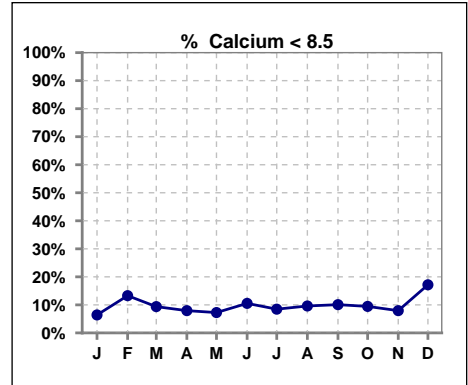


Methodology: a) All labs for 'Adequacy of Dialysis', 'Nutrition', 'Osteodystrophy', 'Anemia' and 'Diabetes' based on last value of month; b) BP's and #L processed are average of all values for month; c) Access data takes last access of month; d) Values for SGA and 'Infection Control' use most recent result.

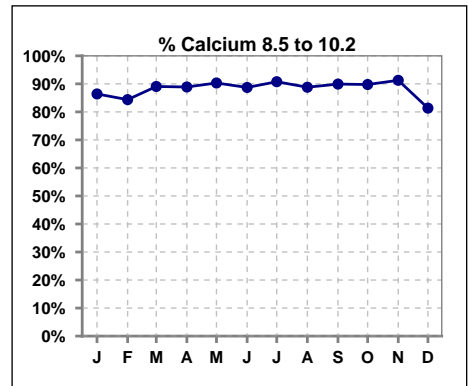
Lab methodology for PTH changed January 2012

III. OSTEODYSTROPHY - CONT.

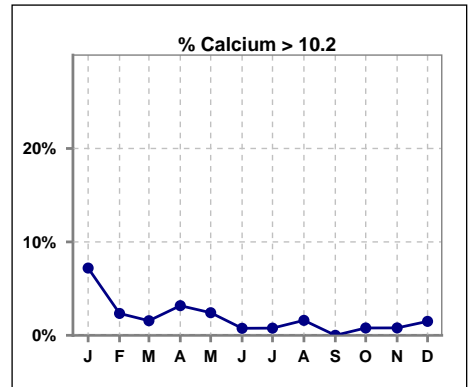
	Jan	Feb	Mar	Apr	May	Jun	Jul	Aug	Sep	Oct	Nov	Dec
# Calcium	125	128	128	126	124	133	130	125	129	127	126	134
# Calcium < 8.5	8	17	12	10	9	14	11	12	13	12	10	23
Pop. Mean	9.4	9.2	9.2	9.3	9.3	9.2	9.3	9.3	9.2	9.3	9.3	9.0
Std. Deviation	0.75	0.71	0.65	0.70	0.67	0.66	0.64	0.57	0.55	0.57	0.61	0.66
% Calcium < 8.5	6%	13%	9%	8%	7%	11%	8%	10%	10%	9%	8%	17%



	Jan	Feb	Mar	Apr	May	Jun	Jul	Aug	Sep	Oct	Nov	Dec
# Calcium	125	128	128	126	124	133	130	125	129	127	126	134
# Calcium 8.5 to 10.2	108	108	114	112	112	118	118	111	116	114	115	109
Pop. Mean	9.4	9.2	9.2	9.3	9.3	9.2	9.3	9.3	9.2	9.3	9.3	9.0
Std. Deviation	0.75	0.71	0.65	0.70	0.67	0.66	0.64	0.57	0.55	0.57	0.61	0.66
% Calcium 8.5 to 10.2	86%	84%	89%	89%	90%	89%	91%	89%	90%	90%	91%	81%



	Jan	Feb	Mar	Apr	May	Jun	Jul	Aug	Sep	Oct	Nov	Dec
# Calcium	125	128	128	126	124	133	130	125	129	127	126	134
# Calcium > 10.2	9	3	2	4	3	1	1	2	0	1	1	2
Pop. Mean	9.4	9.2	9.2	9.3	9.3	9.2	9.3	9.3	9.2	9.3	9.3	9.0
Std. Deviation	0.75	0.71	0.65	0.70	0.67	0.66	0.64	0.57	0.55	0.57	0.61	0.66
% Calcium > 10.2	7%	2%	2%	3%	2%	1%	1%	2%	0%	1%	1%	1%

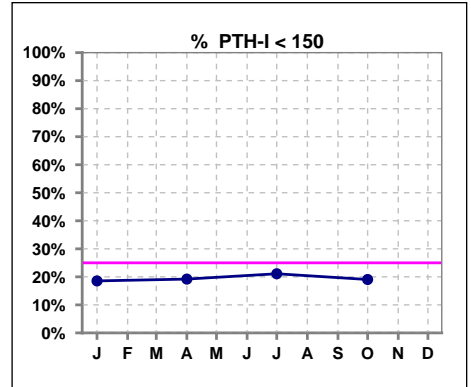


Methodology: a) All labs for 'Adequacy of Dialysis', 'Nutrition', 'Osteodystrophy', 'Anemia' and 'Diabetes' based on last value of month; b) BP's and #L processed are average of all values for month; c) Access data takes last access of month; d) Values for SGA and 'Infection Control' use most recent result.

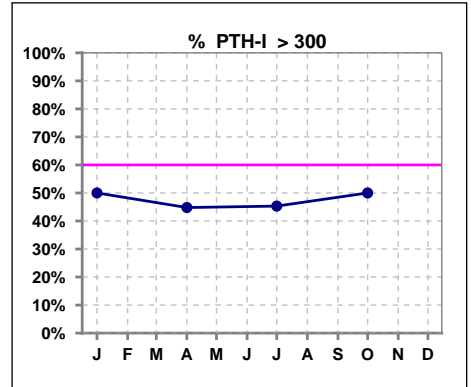
Lab methodology for PTH changed January 2012

III. OSTEODYSTROPHY - CONT.

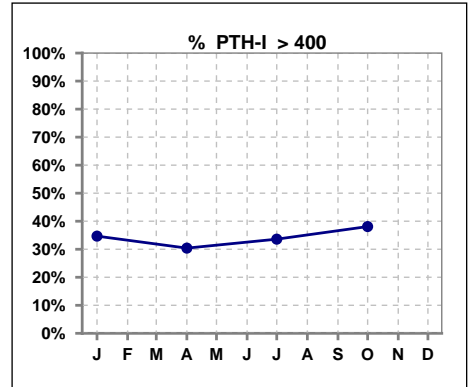
	Jan	Feb	Mar	Apr	May	Jun	Jul	Aug	Sep	Oct	Nov	Dec
# PTH-I	124			125			128			126		
# PTH-I < 150	23			24			27			24		
Pop. Mean	369			364			366			385		
Std. Deviation	293			319			350			302		
% PTH-I < 150	19%			19%			21%			19%		



	Jan	Feb	Mar	Apr	May	Jun	Jul	Aug	Sep	Oct	Nov	Dec
# PTH-I	124			125			128			126		
# PTH-I > 300	62			56			58			63		
Pop. Mean	369			364			366			385		
Std. Deviation	293			319			350			302		
% PTH-I > 300	50%			45%			45%			50%		



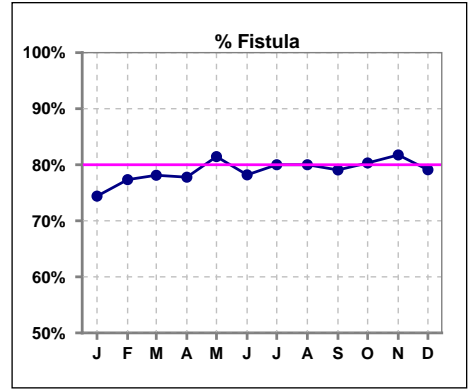
	Jan	Feb	Mar	Apr	May	Jun	Jul	Aug	Sep	Oct	Nov	Dec
# PTH-I	124			125			128			126		
# PTH-I > 400	43			38			43			48		
Pop. Mean	369			364			366			385		
Std. Deviation	293			319			350			302		
% PTH-I > 400	35%			30%			34%			38%		



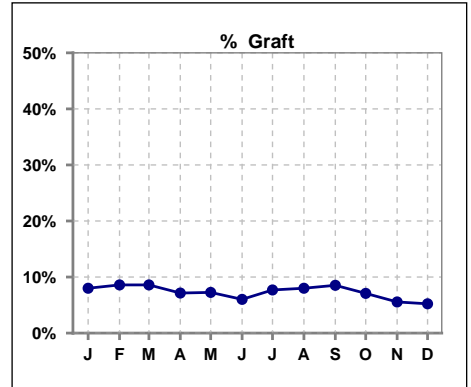
Methodology: a) All labs for 'Adequacy of Dialysis', 'Nutrition', 'Osteodystrophy', 'Anemia' and 'Diabetes' based on last value of month; b) BP's and #L processed are average of all values for month; c) Access data takes last access of month; d) Values for SGA and 'Infection Control' use most recent result.

IV. ACCESS

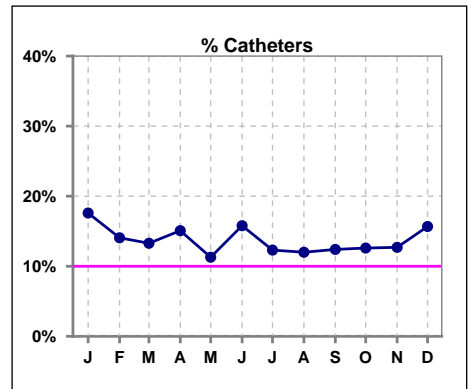
	Jan	Feb	Mar	Apr	May	Jun	Jul	Aug	Sep	Oct	Nov	Dec
# Access	125	128	128	125	124	133	130	125	129	127	126	134
# Fistula	93	99	100	98	101	104	104	100	102	102	103	106
% Fistula	74%	77%	78%	78%	81%	78%	80%	80%	79%	80%	82%	79%



	Jan	Feb	Mar	Apr	May	Jun	Jul	Aug	Sep	Oct	Nov	Dec
# Access	125	128	128	125	124	133	130	125	129	127	126	134
# Graft	10	11	11	9	9	8	10	10	11	9	7	7
% Graft	8%	9%	9%	7%	7%	6%	8%	8%	9%	7%	6%	5%



	Jan	Feb	Mar	Apr	May	Jun	Jul	Aug	Sep	Oct	Nov	Dec
# Access	125	128	128	125	124	133	130	125	129	127	126	134
# Catheters	22	18	17	19	14	21	16	15	16	16	16	21
% Catheters	18%	14%	13%	15%	11%	16%	12%	12%	12%	13%	13%	16%



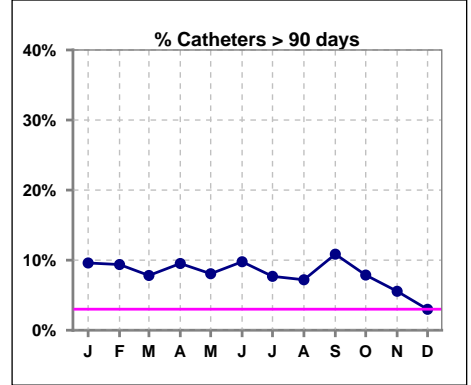
Methodology: a) All labs for 'Adequacy of Dialysis', 'Nutrition', 'Osteodystrophy', 'Anemia' and 'Diabetes' based on last value of month; b) BP's and #L processed are average of all values for month; c) Access data takes last access of month; d) Values for SGA and 'Infection Control' use most recent result.

IV. ACCESS - CONT.

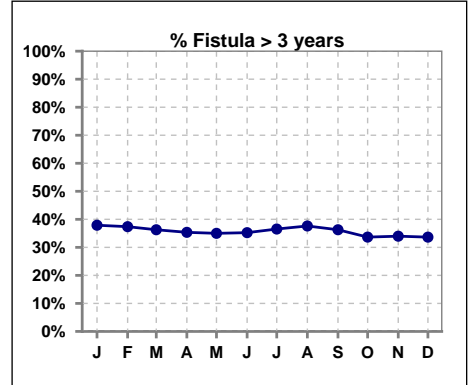
Catheters > 90 days

	Jan	Feb	Mar	Apr	May	Jun	Jul	Aug	Sep	Oct	Nov	Dec
# Access	125	128	128	126	124	133	130	125	129	127	126	134
# Catheters	12	12	10	12	10	13	10	9	14	10	7	4
% Catheters	10%	9%	8%	10%	8%	10%	8%	7%	11%	8%	6%	3%

Definition: Catheter in use on last treatment of the month



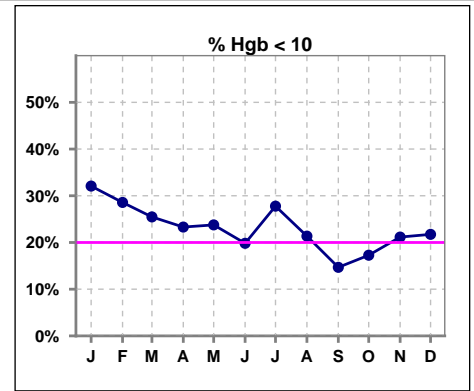
	Jan	Feb	Mar	Apr	May	Jun	Jul	Aug	Sep	Oct	Nov	Dec
# Fistula	95	99	102	99	100	105	104	101	102	104	103	107
# Fistula > 3 yrs	36	37	37	35	35	37	38	38	37	35	35	36
% Fistula > 3 yrs	38%	37%	36%	35%	35%	35%	37%	38%	36%	34%	34%	34%



V. ANEMIA

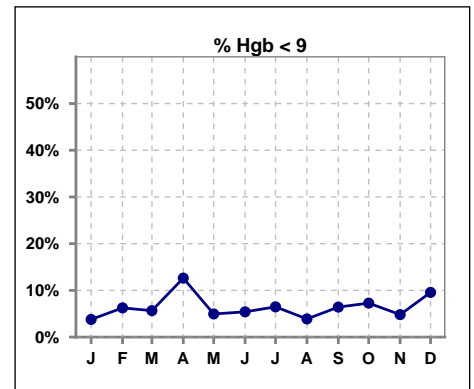
	Jan	Feb	Mar	Apr	May	Jun	Jul	Aug	Sep	Oct	Nov	Dec
# Hgb	106	112	106	103	101	111	108	103	109	110	104	115
# Hgb < 10	34	32	27	24	24	22	30	22	16	19	22	25
Pop. Mean	10.5	10.6	10.6	10.6	10.7	10.7	10.7	10.7	10.7	10.7	10.6	10.5
Std. Deviation	1.0	1.1	1.0	1.1	1.0	1.0	1.1	1.0	0.9	1.1	1.0	1.1
% Hgb < 10	32%	29%	25%	23%	24%	20%	28%	21%	15%	17%	21%	22%

Note: Excludes patients who received no ESA in month.



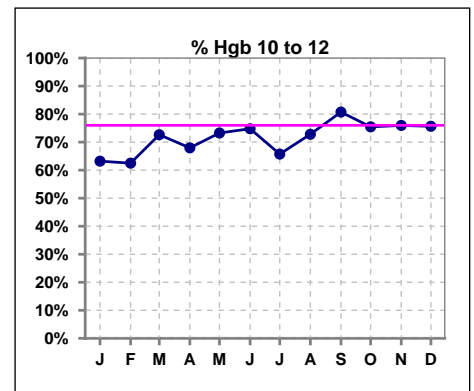
	Jan	Feb	Mar	Apr	May	Jun	Jul	Aug	Sep	Oct	Nov	Dec
# Hgb	106	112	106	103	101	111	108	103	109	110	104	115
# Hgb < 9	4	7	6	13	5	6	7	4	7	8	5	11
Pop. Mean	10.5	10.6	10.6	10.6	10.7	10.7	10.7	10.7	10.7	10.7	10.6	10.5
Std. Deviation	1.0	1.1	1.0	1.1	1.0	1.0	1.1	1.0	0.9	1.1	1.0	1.1
% Hgb < 9	4%	6%	6%	13%	5%	5%	6%	4%	6%	7%	5%	10%

Note: Excludes patients who received no ESA in month.



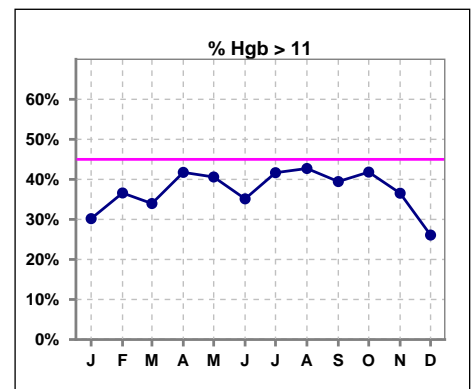
	Jan	Feb	Mar	Apr	May	Jun	Jul	Aug	Sep	Oct	Nov	Dec
# Hgb	106	112	106	103	101	111	108	103	109	110	104	115
# Hgb 10 to 12	67	70	77	70	74	83	71	75	88	83	79	87
Pop. Mean	10.5	10.6	10.6	10.6	10.7	10.7	10.7	10.7	10.7	10.7	10.6	10.5
Std. Deviation	1.0	1.1	1.0	1.1	1.0	1.0	1.1	1.0	0.9	1.1	1.0	1.1
% Hgb 10 to 12	63%	63%	73%	68%	73%	75%	66%	73%	81%	75%	76%	76%

Note: Excludes patients who received no ESA in month.



	Jan	Feb	Mar	Apr	May	Jun	Jul	Aug	Sep	Oct	Nov	Dec
# Hgb	106	112	106	103	101	111	108	103	109	110	104	115
# Hgb > 11	32	41	36	43	41	39	45	44	43	46	38	30
Pop. Mean	10.5	10.6	10.6	10.6	10.7	10.7	10.7	10.7	10.7	10.7	10.6	10.5
Std. Deviation	1.0	1.1	1.0	1.1	1.0	1.0	1.1	1.0	0.9	1.1	1.0	1.1
% Hgb > 11	30%	37%	34%	42%	41%	35%	42%	43%	39%	42%	37%	26%

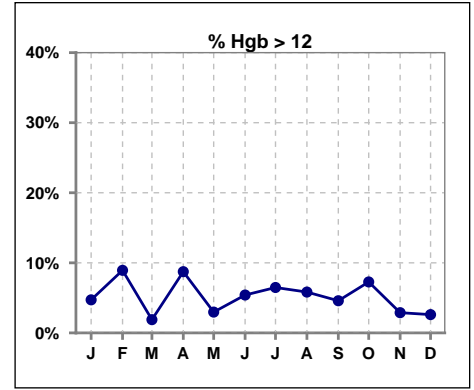
Note: Excludes patients who received no ESA in month.



V. ANEMIA - CONT.

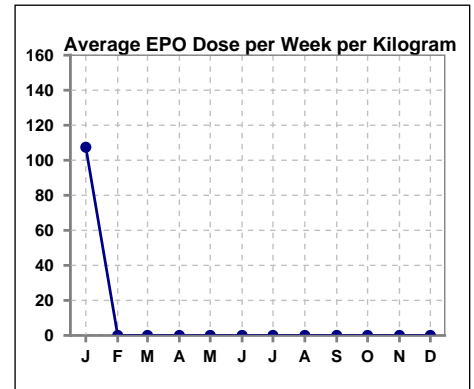
	Jan	Feb	Mar	Apr	May	Jun	Jul	Aug	Sep	Oct	Nov	Dec
# Hgb	106	112	106	103	101	111	108	103	109	110	104	115
# Hgb > 12	5	10	2	9	3	6	7	6	5	8	3	3
Pop. Mean	10.5	10.6	10.6	10.6	10.7	10.7	10.7	10.7	10.7	10.7	10.6	10.5
Std. Deviation	1.0	1.1	1.0	1.1	1.0	1.0	1.1	1.0	0.9	1.1	1.0	1.1
% Hgb > 12	5%	9%	2%	9%	3%	5%	6%	6%	5%	7%	3%	3%

Note: Excludes patients who received no ESA in month.



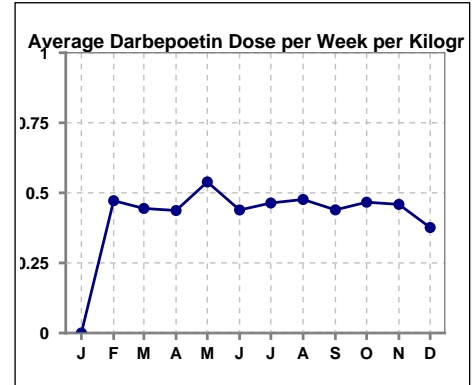
Average EPO Dose per Week per Kilogram

	Jan	Feb	Mar	Apr	May	Jun	Jul	Aug	Sep	Oct	Nov	Dec
# Average EPO	107.4	0	0	0	0	0	0	0	0	0	0	0



Average Darbepoetin Dose per Week per Kilogram

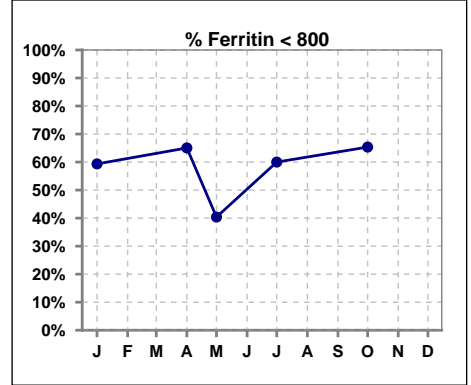
	Jan	Feb	Mar	Apr	May	Jun	Jul	Aug	Sep	Oct	Nov	Dec
# Average Darbepoetin	0	.5	.4	.4	.5	.4	.5	.5	.4	.5	.5	.4



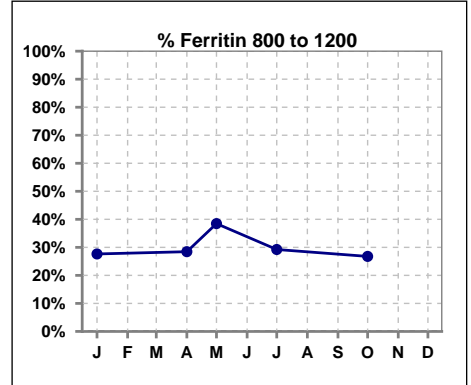
V. ANEMIA - CONT.

Iron Profile

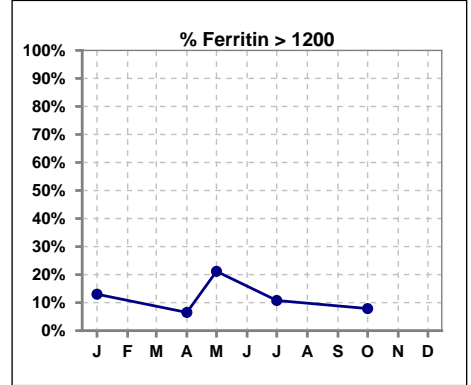
	Jan	Feb	Mar	Apr	May	Jun	Jul	Aug	Sep	Oct	Nov	Dec
# Ferritin	123			123	52		130			127		
# Ferritin < 800	73			80	21		78			83		
Pop. Mean	766			705	894		768			701		
Std. Deviation	370			343	338		396			333		
% Ferritin < 800	59%			65%	40%		60%			65%		



	Jan	Feb	Mar	Apr	May	Jun	Jul	Aug	Sep	Oct	Nov	Dec
# Ferritin	123			123	52		130			127		
# Ferritin 800 to 1200	34			35	20		38			34		
Pop. Mean	766			705	894		768			701		
Std. Deviation	370			343	338		396			333		
% Ferritin 800 to 1200	28%			28%	38%		29%			27%		



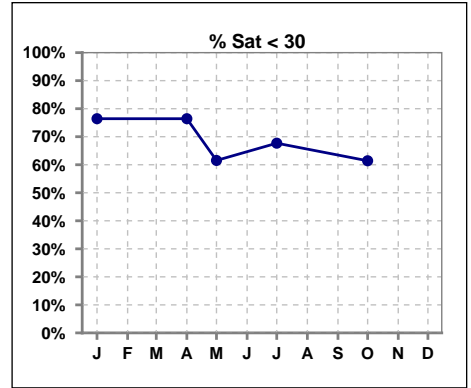
	Jan	Feb	Mar	Apr	May	Jun	Jul	Aug	Sep	Oct	Nov	Dec
# Ferritin	123			123	52		130			127		
# Ferritin > 1200	16			8	11		14			10		
Pop. Mean	766			705	894		768			701		
Std. Deviation	370			343	338		396			333		
% Ferritin > 1200	13%			7%	21%		11%			8%		



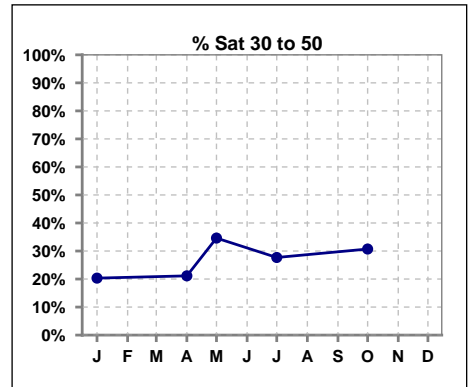
Methodology: a) All labs for 'Adequacy of Dialysis', 'Nutrition', 'Osteodystrophy', 'Anemia' and 'Diabetes' based on last value of month; b) BP's and #L processed are average of all values for month; c) Access data takes last access of month; d) Values for SGA and 'Infection Control' use most recent result.

V. ANEMIA - CONT.

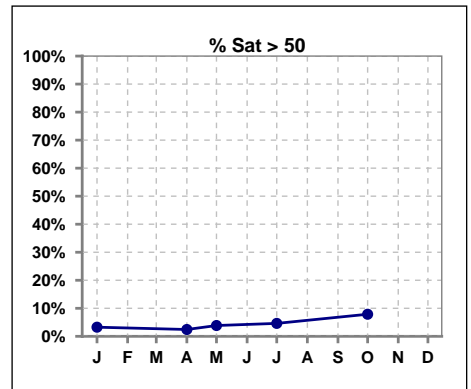
	Jan	Feb	Mar	Apr	May	Jun	Jul	Aug	Sep	Oct	Nov	Dec
# % Sat	123			123	52		130			127		
# % Sat < 30	94			94	32		88			78		
Pop. Mean	25			25	27		27			28		
Std. Deviation	12			12	12		14			14		
% % Sat < 30	76%			76%	62%		68%			61%		



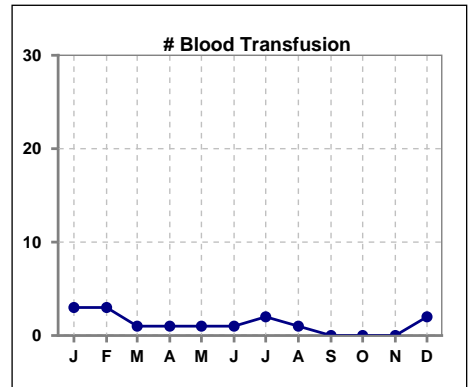
	Jan	Feb	Mar	Apr	May	Jun	Jul	Aug	Sep	Oct	Nov	Dec
# % Sat	123			123	52		130			127		
# % Sat 30 to 50	25			26	18		36			39		
Pop. Mean	25			25	27		27			28		
Std. Deviation	12			12	12		14			14		
% % Sat 30 to 50	20%			21%	35%		28%			31%		



	Jan	Feb	Mar	Apr	May	Jun	Jul	Aug	Sep	Oct	Nov	Dec
# % Sat	123			123	52		130			127		
# % Sat > 50	4			3	2		6			10		
Pop. Mean	25			25	27		27			28		
Std. Deviation	12			12	12		14			14		
% % Sat > 50	3%			2%	4%		5%			8%		



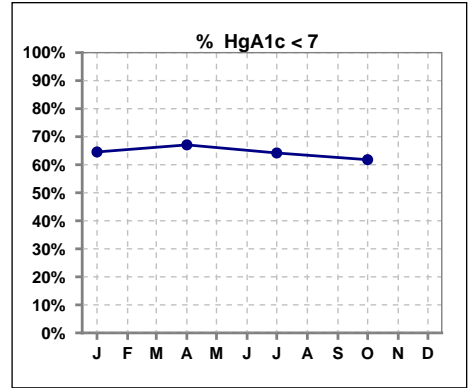
	Jan	Feb	Mar	Apr	May	Jun	Jul	Aug	Sep	Oct	Nov	Dec
# Patient	126	128	128	126	124	133	130	126	129	127	127	135
# Blood Transfusion	3	3	1	1	1	1	2	1	0	0	0	2



Methodology: a) All labs for 'Adequacy of Dialysis', 'Nutrition', 'Osteodystrophy', 'Anemia' and 'Diabetes' based on last value of month; b) BP's and #L processed are average of all values for month; c) Access data takes last access of month; d) Values for SGA and 'Infection Control' use most recent result.

VI. Diabetes

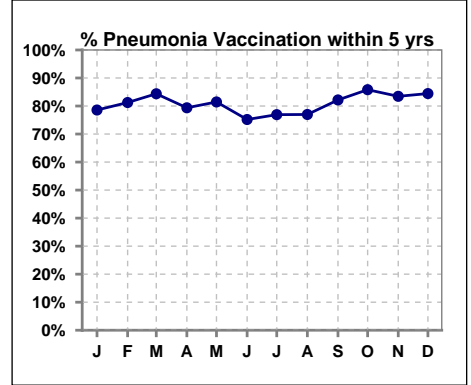
	Jan	Feb	Mar	Apr	May	Jun	Jul	Aug	Sep	Oct	Nov	Dec
# HgA1c	79			79			81			89		
# HgA1c < 7	51			53			52			55		
Pop. Mean	6.8			6.6			6.6			6.8		
Std. Deviation	1.28			1.18			1.33			1.56		
% HgA1c < 7	65%			67%			64%			62%		



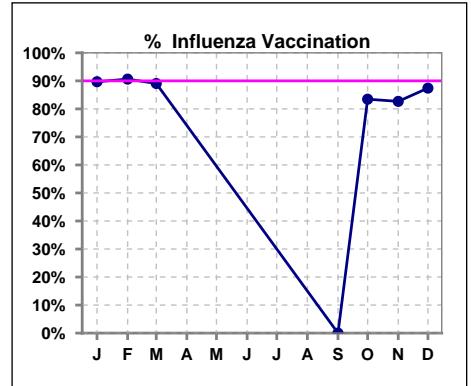
VII. Infection Control

Pneumonia vaccination within the past five years

	Jan	Feb	Mar	Apr	May	Jun	Jul	Aug	Sep	Oct	Nov	Dec
# Patient	126	128	128	126	124	133	130	126	129	127	127	135
# Pneumonia	99	104	108	100	101	100	100	97	106	109	106	114
% Pneumonia	79%	81%	84%	79%	81%	75%	77%	77%	82%	86%	83%	84%



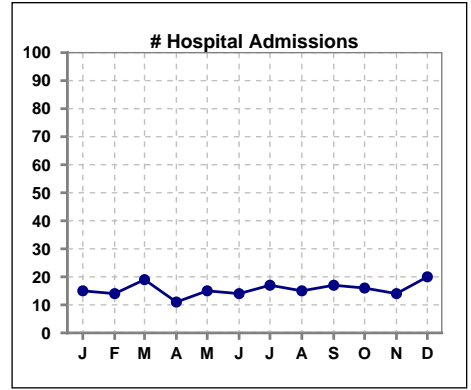
	Jan	Feb	Mar	Apr	May	Jun	Jul	Aug	Sep	Oct	Nov	Dec
# Patient	126	128	128						129	127	127	135
# Influenza	113	116	114						0	106	105	118
% Influenza	90%	91%	89%						0%	83%	83%	87%



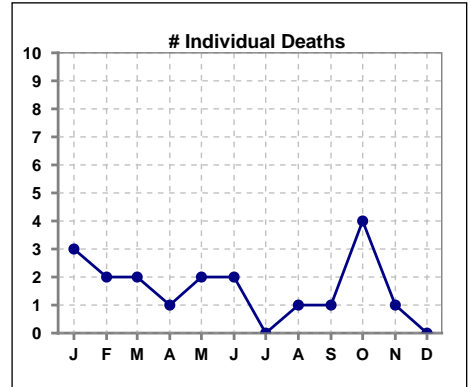
Methodology: a) All labs for 'Adequacy of Dialysis', 'Nutrition', 'Osteodystrophy', 'Anemia' and 'Diabetes' based on last value of month; b) BP's and #L processed are average of all values for month; c) Access data takes last access of month; d) Values for SGA and 'Infection Control' use most recent result.

VIII. Outcome measures

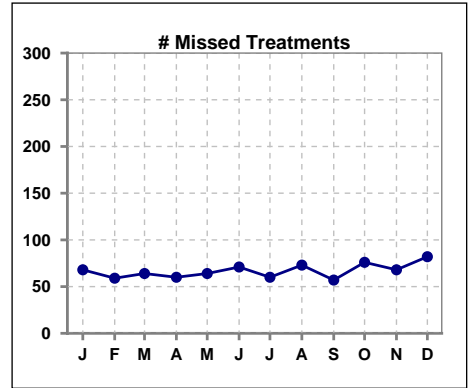
	Jan	Feb	Mar	Apr	May	Jun	Jul	Aug	Sep	Oct	Nov	Dec
# Patient	126	128	128	126	124	133	130	126	129	127	127	135
# Hospital Admissions	15	14	19	11	15	14	17	15	17	16	14	20



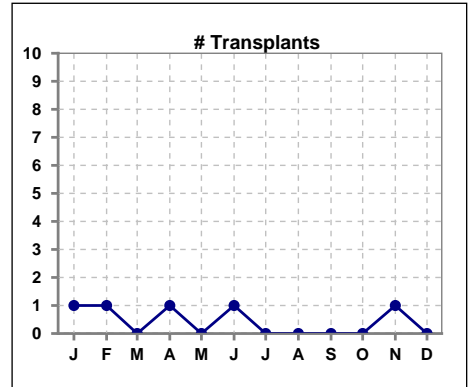
	Jan	Feb	Mar	Apr	May	Jun	Jul	Aug	Sep	Oct	Nov	Dec
# Patient	126	128	128	126	124	133	130	126	129	127	127	135
# Individual Deaths	3	2	2	1	2	2	0	1	1	4	1	0



	Jan	Feb	Mar	Apr	May	Jun	Jul	Aug	Sep	Oct	Nov	Dec
# Patient	126	128	128	126	124	133	130	126	129	127	127	135
# Missed Treatments	68	59	64	60	64	71	60	73	57	76	68	82



	Jan	Feb	Mar	Apr	May	Jun	Jul	Aug	Sep	Oct	Nov	Dec
# Patient	126	128	128	126	124	133	130	126	129	127	127	135
# Transplants	1	1	0	1	0	1	0	0	0	0	1	0



Methodology: a) All labs for 'Adequacy of Dialysis', 'Nutrition', 'Osteodystrophy', 'Anemia' and 'Diabetes' based on last value of month; b) BP's and #L processed are average of all values for month; c) Access data takes last access of month; d) Values for SGA and 'Infection Control' use most recent result.