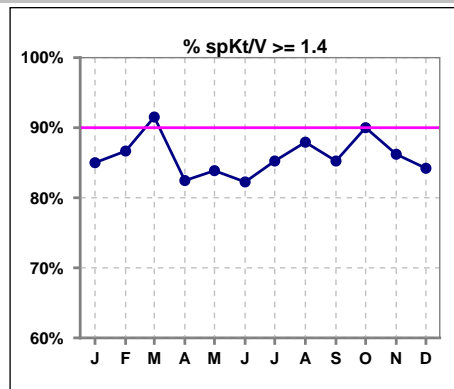
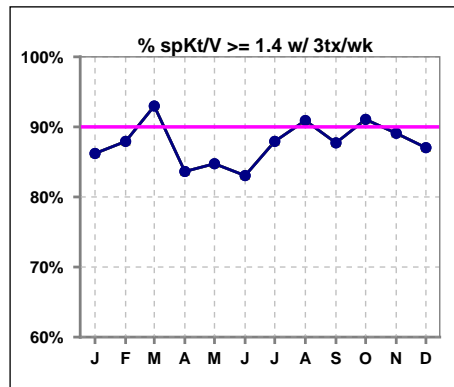


**I. ADEQUACY OF DIALYSIS**

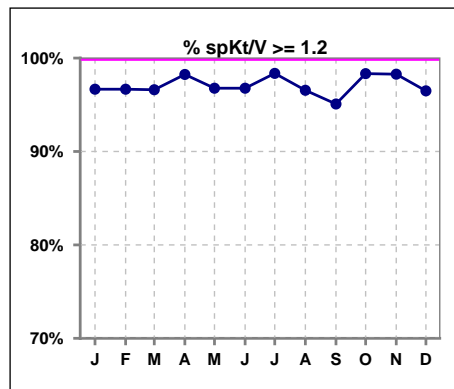
	Jan	Feb	Mar	Apr	May	Jun	Jul	Aug	Sep	Oct	Nov	Dec
# spKt/V	60	60	59	57	62	62	61	58	61	60	58	57
# spKt/V >= 1.4	51	52	54	47	52	51	52	51	52	54	50	48
Pop. Mean	1.66	1.67	1.69	1.66	1.68	1.69	1.69	1.64	1.68	1.65	1.62	1.69
Std. Deviation	0.26	0.25	0.28	0.26	0.27	0.29	0.28	0.25	0.29	0.26	0.24	0.31
% spKt/V >= 1.4	85%	87%	92%	82%	84%	82%	85%	88%	85%	90%	86%	84%



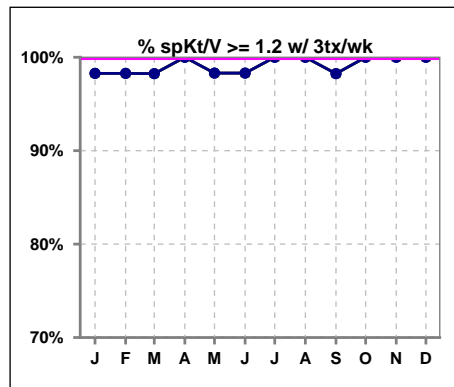
	Jan	Feb	Mar	Apr	May	Jun	Jul	Aug	Sep	Oct	Nov	Dec
# spKt/V w/ 3tx/wk	58	58	57	55	59	59	58	55	57	56	55	54
# spKt/V >= 1.4 w/3tx/wk	50	51	53	46	50	49	51	50	50	51	49	47
Pop. Mean	1.67	1.68	1.70	1.67	1.69	1.70	1.70	1.67	1.71	1.66	1.64	1.71
Std. Deviation	0.26	0.24	0.26	0.25	0.27	0.28	0.27	0.22	0.26	0.24	0.23	0.29
% >= 1.4 w/3tx/wk	86%	88%	93%	84%	85%	83%	88%	91%	88%	91%	89%	87%



	Jan	Feb	Mar	Apr	May	Jun	Jul	Aug	Sep	Oct	Nov	Dec
# spKt/V	60	60	59	57	62	62	61	58	61	60	58	57
# spKt/V >= 1.2	58	58	57	56	60	60	60	56	58	59	57	55
Pop. Mean	1.66	1.67	1.69	1.66	1.68	1.69	1.69	1.64	1.68	1.65	1.62	1.69
Std. Deviation	0.26	0.25	0.28	0.26	0.27	0.29	0.28	0.25	0.29	0.26	0.24	0.31
% spKt/V >= 1.2	97%	97%	97%	98%	97%	97%	98%	97%	95%	98%	98%	96%



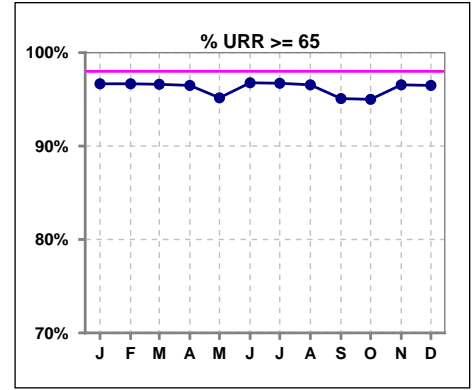
	Jan	Feb	Mar	Apr	May	Jun	Jul	Aug	Sep	Oct	Nov	Dec
# spKt/V w/ 3tx/wk	58	58	57	55	59	59	58	55	57	56	55	54
# spKt/V >= 1.2 w/3tx/wk	57	57	56	55	58	58	58	55	56	56	55	54
Pop. Mean	1.67	1.68	1.70	1.67	1.69	1.70	1.70	1.67	1.71	1.66	1.64	1.71
Std. Deviation	0.26	0.24	0.26	0.25	0.27	0.28	0.27	0.22	0.26	0.24	0.23	0.29
% >= 1.2 w/3tx/wk	98%	98%	98%	100%	98%	98%	100%	100%	98%	100%	100%	100%



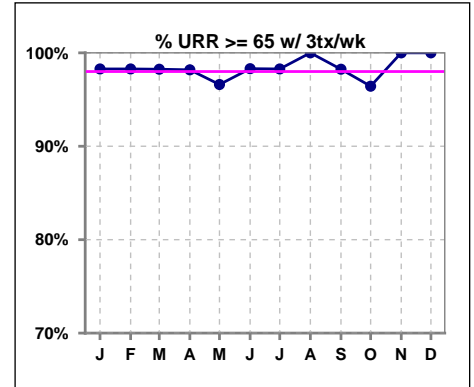
Methodology: a) All labs for 'Adequacy of Dialysis', 'Nutrition', 'Osteodystrophy', 'Anemia' and 'Diabetes' based on last value of month; b) BP's and #L processed are average of all values for month; c) Access data takes last access of month; d) Values for SGA and 'Infection Control' use most recent result.

**I. ADEQUACY OF DIALYSIS - CONT.**

	Jan	Feb	Mar	Apr	May	Jun	Jul	Aug	Sep	Oct	Nov	Dec
# URR	60	60	59	57	62	62	61	58	61	60	58	57
# URR >= 65	58	58	57	55	59	60	59	56	58	57	56	55
Pop. Mean	76	76	76	76	76	77	76	76	76	76	75	77
Std. Deviation	5.40	5.41	5.46	5.28	5.46	5.69	5.43	5.41	6.26	5.54	5.27	6.36
<b>% URR &gt;= 65</b>	<b>97%</b>	<b>97%</b>	<b>97%</b>	<b>96%</b>	<b>95%</b>	<b>97%</b>	<b>97%</b>	<b>97%</b>	<b>95%</b>	<b>95%</b>	<b>97%</b>	<b>96%</b>



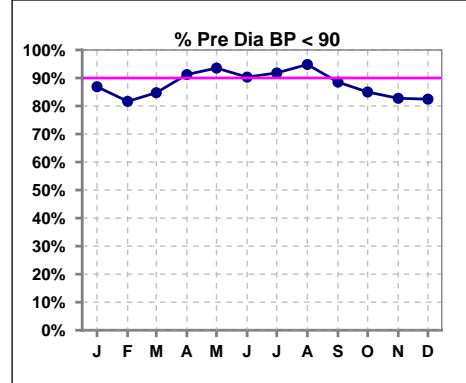
	Jan	Feb	Mar	Apr	May	Jun	Jul	Aug	Sep	Oct	Nov	Dec
# URR w/ 3tx/wk	58	58	57	55	59	59	58	55	57	56	55	54
# URR>=65 w/ 3tx/wk	57	57	56	54	57	58	57	55	56	54	55	54
Pop. Mean	76	76	77	76	76	77	77	76	77	76	76	77
Std. Deviation	5.13	4.96	5.01	4.85	5.33	5.34	5.05	4.49	5.17	4.94	4.57	5.65
<b>% URR&gt;=65 w/ 3tx/wk</b>	<b>98%</b>	<b>98%</b>	<b>98%</b>	<b>98%</b>	<b>97%</b>	<b>98%</b>	<b>98%</b>	<b>100%</b>	<b>98%</b>	<b>96%</b>	<b>100%</b>	<b>100%</b>



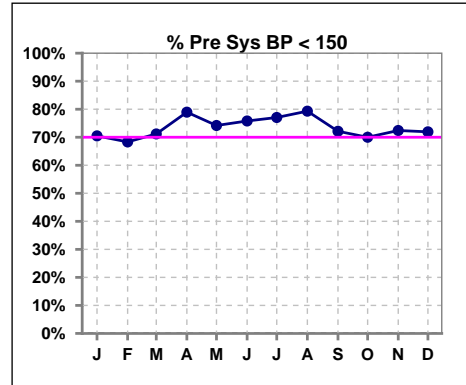
**I. ADEQUACY OF DIALYSIS - CONT.**

**Blood Pressure Control (Pre)**

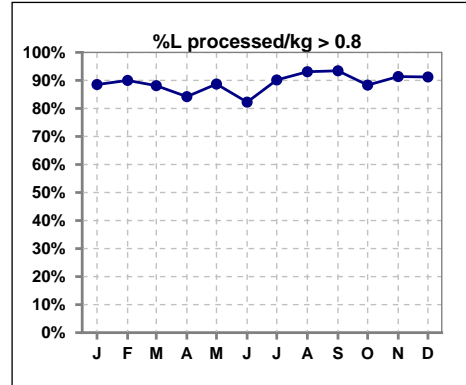
	Jan	Feb	Mar	Apr	May	Jun	Jul	Aug	Sep	Oct	Nov	Dec
# Pre Dia BP	61	60	59	57	62	62	61	58	61	60	58	57
# Pre Dia BP < 90	53	49	50	52	58	56	56	55	54	51	48	47
Pop. Mean	75	75	74	72	72	72	72	72	73	73	74	75
Std. Deviation	13.7	14.6	13.9	12.9	13.6	13.9	14.4	13.2	13.4	14.4	15.6	16.0
<b>% Pre Dia BP &lt; 90</b>	<b>87%</b>	<b>82%</b>	<b>85%</b>	<b>91%</b>	<b>94%</b>	<b>90%</b>	<b>92%</b>	<b>95%</b>	<b>89%</b>	<b>85%</b>	<b>83%</b>	<b>82%</b>



	Jan	Feb	Mar	Apr	May	Jun	Jul	Aug	Sep	Oct	Nov	Dec
# Pre Sys BP	61	60	59	57	62	62	61	58	61	60	58	57
# Pre Sys BP < 150	43	41	42	45	46	47	47	46	44	42	42	41
Pop. Mean	137	140	139	136	135	134	135	133	136	136	137	138
Std. Deviation	21.5	21.8	22.8	21.1	21.6	21.5	20.8	21.6	21.7	20.2	23.0	22.7
<b>%Pre Sys BP &lt;150</b>	<b>70%</b>	<b>68%</b>	<b>71%</b>	<b>79%</b>	<b>74%</b>	<b>76%</b>	<b>77%</b>	<b>79%</b>	<b>72%</b>	<b>70%</b>	<b>72%</b>	<b>72%</b>



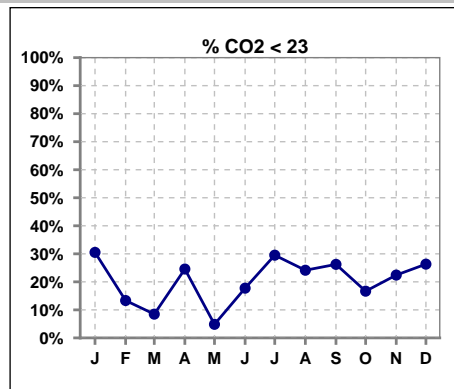
	Jan	Feb	Mar	Apr	May	Jun	Jul	Aug	Sep	Oct	Nov	Dec
# L processed/kg	61	60	59	57	62	62	61	58	61	60	58	57
# L processed/kg>0.8	54	54	52	48	55	51	55	54	57	53	53	52
Pop. Mean	1	1	1	1	1	1	1	1	1	1	1	1
Std. Deviation	0.3	0.3	0.3	0.3	0.3	0.3	0.2	0.3	0.3	0.3	0.3	0.3
<b>% L processed/kg&gt;0.8</b>	<b>89%</b>	<b>90%</b>	<b>88%</b>	<b>84%</b>	<b>89%</b>	<b>82%</b>	<b>90%</b>	<b>93%</b>	<b>93%</b>	<b>88%</b>	<b>91%</b>	<b>91%</b>



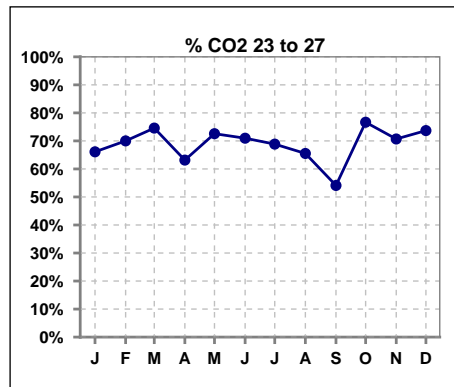
Methodology: a) All labs for 'Adequacy of Dialysis', 'Nutrition', 'Osteodystrophy', 'Anemia' and 'Diabetes' based on last value of month; b) BP's and #L processed are average of all values for month; c) Access data takes last access of month; d) Values for SGA and 'Infection Control' use most recent result.

**I. ADEQUACY OF DIALYSIS - CONT.**

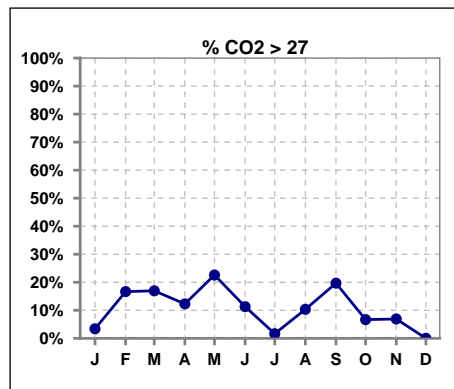
	Jan	Feb	Mar	Apr	May	Jun	Jul	Aug	Sep	Oct	Nov	Dec
# CO2	59	60	59	57	62	62	61	58	61	60	58	57
# CO2 < 23	18	8	5	14	3	11	18	14	16	10	13	15
Pop. Mean	24	25	25	24	26	25	24	24	24	24	25	24
Std. Deviation	2.71	2.08	2.11	2.82	2.25	2.29	2.68	2.82	2.83	2.23	2.36	2.17
% CO2 < 23	31%	13%	8%	25%	5%	18%	30%	24%	26%	17%	22%	26%



	Jan	Feb	Mar	Apr	May	Jun	Jul	Aug	Sep	Oct	Nov	Dec
# CO2	59	60	59	57	62	62	61	58	61	60	58	57
# CO2 23 to 27	39	42	44	36	45	44	42	38	33	46	41	42
Pop. Mean	24	25	25	24	26	25	24	24	24	24	25	24
Std. Deviation	2.71	2.08	2.11	2.82	2.25	2.29	2.68	2.82	2.83	2.23	2.36	2.17
% CO2 23 to 27	66%	70%	75%	63%	73%	71%	69%	66%	54%	77%	71%	74%



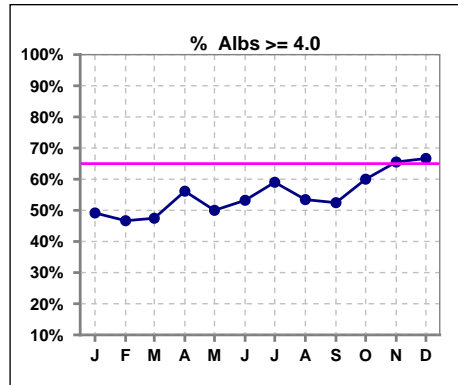
	Jan	Feb	Mar	Apr	May	Jun	Jul	Aug	Sep	Oct	Nov	Dec
# CO2	59	60	59	57	62	62	61	58	61	60	58	57
# CO2 > 27	2	10	10	7	14	7	1	6	12	4	4	0
Pop. Mean	24	25	25	24	26	25	24	24	24	24	25	24
Std. Deviation	2.71	2.08	2.11	2.82	2.25	2.29	2.68	2.82	2.83	2.23	2.36	2.17
% CO2 > 27	3%	17%	17%	12%	23%	11%	2%	10%	20%	7%	7%	0%



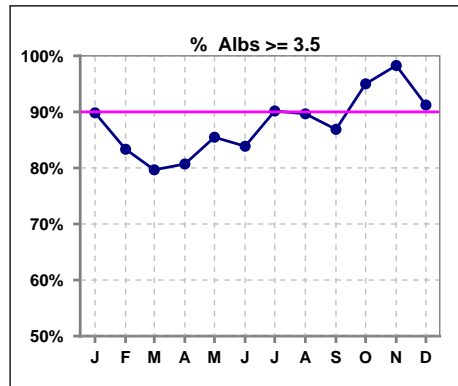
\*Albumin values use BCG method - as of July 2001

**II. NUTRITION**

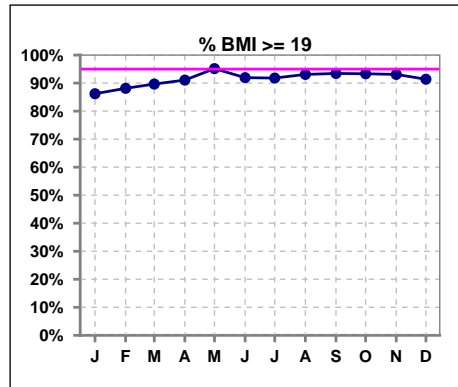
	Jan	Feb	Mar	Apr	May	Jun	Jul	Aug	Sep	Oct	Nov	Dec
# Albumin	59	60	59	57	62	62	61	58	61	60	58	57
# Albumin >= 4.0	29	28	28	32	31	33	36	31	32	36	38	38
Pop. Mean	3.9	3.8	3.8	3.9	3.9	3.9	3.9	4.0	3.9	4.0	4.1	4.0
Std. Deviation	0.37	0.42	0.44	0.44	0.43	0.43	0.39	0.39	0.43	0.37	0.32	0.39
% Alb >= 4.0	49%	47%	47%	56%	50%	53%	59%	53%	52%	60%	66%	67%



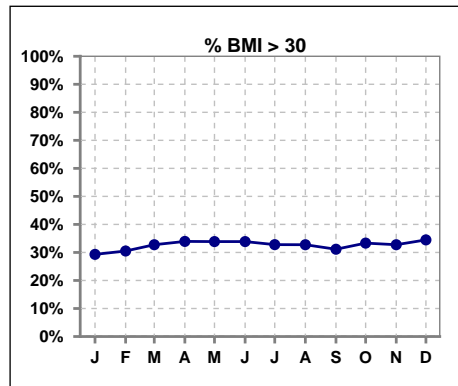
	Jan	Feb	Mar	Apr	May	Jun	Jul	Aug	Sep	Oct	Nov	Dec
# Albumin	59	60	59	57	62	62	61	58	61	60	58	57
# Albumin >= 3.5	53	50	47	46	53	52	55	52	53	57	57	52
Pop. Mean	3.9	3.8	3.8	3.9	3.9	3.9	3.9	4.0	3.9	4.0	4.1	4.0
Std. Deviation	0.37	0.42	0.44	0.44	0.43	0.43	0.39	0.39	0.43	0.37	0.32	0.39
% Alb >= 3.5	90%	83%	80%	81%	85%	84%	90%	90%	87%	95%	98%	91%



	Jan	Feb	Mar	Apr	May	Jun	Jul	Aug	Sep	Oct	Nov	Dec
# BMI	58	59	58	56	62	62	61	58	61	60	58	57
# BMI >= 19	50	52	52	51	59	57	56	54	57	56	54	53
Pop. Mean	26	27	27	27	27	27	27	27	27	27	27	27
Std. Deviation	6.4	6.8	6.5	6.0	6.0	6.1	6.1	6.2	6.3	6.3	5.8	6.0
% BMI >= 19	86%	88%	90%	91%	95%	92%	92%	93%	93%	93%	93%	91%



	Jan	Feb	Mar	Apr	May	Jun	Jul	Aug	Sep	Oct	Nov	Dec
# BMI	58	59	58	56	62	62	61	58	61	60	58	57
# BMI > 30	17	18	19	19	21	21	20	19	19	20	19	20
Pop. Mean	26	27	27	27	27	27	27	27	27	27	27	27
Std. Deviation	6.4	6.8	6.5	6.0	6.0	6.1	6.1	6.2	6.3	6.3	5.8	6.0
% BMI > 30	29%	31%	33%	34%	34%	34%	33%	33%	31%	33%	33%	34%

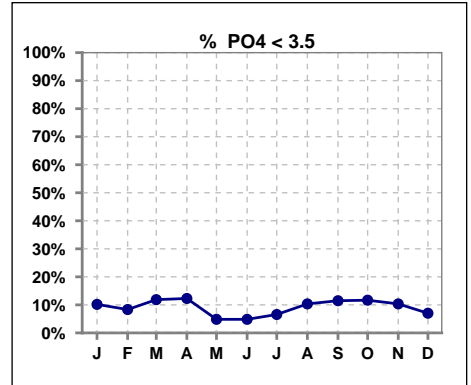


Methodology: a) All labs for 'Adequacy of Dialysis', 'Nutrition', 'Osteodystrophy', 'Anemia' and 'Diabetes' based on last value of month; b) BP's and #L processed are average of all values for month; c) Access data takes last access of month; d) Values for SGA and 'Infection Control' use most recent result.

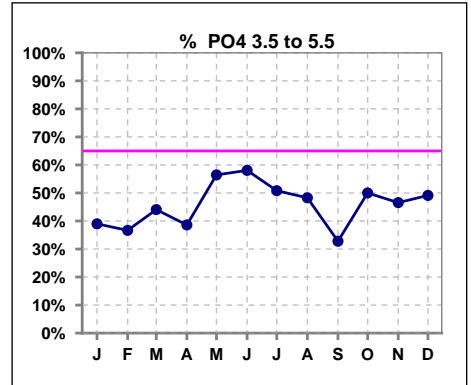
Lab methodology for PTH changed January 2012

**III. OSTEODYSTROPHY**

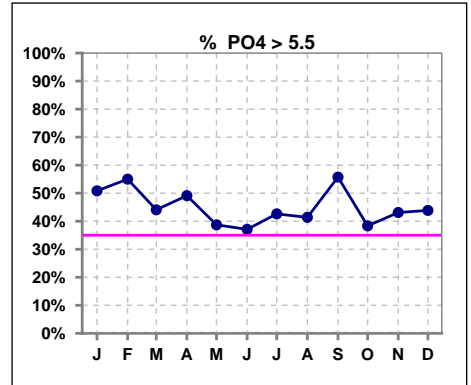
	Jan	Feb	Mar	Apr	May	Jun	Jul	Aug	Sep	Oct	Nov	Dec
# PO4	59	60	59	57	62	62	61	58	61	60	58	57
# PO4 < 3.5	6	5	7	7	3	3	4	6	7	7	6	4
Pop. Mean	5.8	5.7	5.6	5.7	5.4	5.6	5.6	5.4	5.6	5.6	5.4	5.4
Std. Deviation	1.77	1.90	1.81	2.13	1.68	1.67	1.70	1.52	1.75	2.32	1.78	1.48
% PO4 < 3.5	10%	8%	12%	12%	5%	5%	7%	10%	11%	12%	10%	7%



	Jan	Feb	Mar	Apr	May	Jun	Jul	Aug	Sep	Oct	Nov	Dec
# PO4	59	60	59	57	62	62	61	58	61	60	58	57
# PO4 3.5 to 5.5	23	22	26	22	35	36	31	28	20	30	27	28
Pop. Mean	5.8	5.7	5.6	5.7	5.4	5.6	5.6	5.4	5.6	5.6	5.4	5.4
Std. Deviation	1.77	1.90	1.81	2.13	1.68	1.67	1.70	1.52	1.75	2.32	1.78	1.48
% PO4 3.5 to 5.5	39%	37%	44%	39%	56%	58%	51%	48%	33%	50%	47%	49%



	Jan	Feb	Mar	Apr	May	Jun	Jul	Aug	Sep	Oct	Nov	Dec
# PO4	59	60	59	57	62	62	61	58	61	60	58	57
# PO4 > 5.5	30	33	26	28	24	23	26	24	34	23	25	25
Pop. Mean	5.8	5.7	5.6	5.7	5.4	5.6	5.6	5.4	5.6	5.6	5.4	5.4
Std. Deviation	1.77	1.90	1.81	2.13	1.68	1.67	1.70	1.52	1.75	2.32	1.78	1.48
% PO4 > 5.5	51%	55%	44%	49%	39%	37%	43%	41%	56%	38%	43%	44%

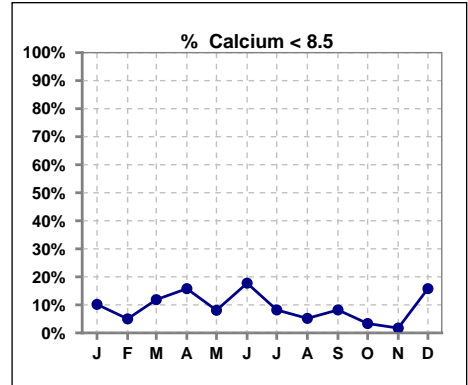


Methodology: a) All labs for 'Adequacy of Dialysis', 'Nutrition', 'Osteodystrophy', 'Anemia' and 'Diabetes' based on last value of month; b) BP's and #L processed are average of all values for month; c) Access data takes last access of month; d) Values for SGA and 'Infection Control' use most recent result.

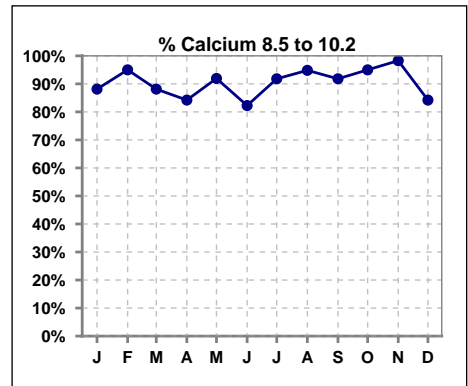
Lab methodology for PTH changed January 2012

**III. OSTEODYSTROPHY - CONT.**

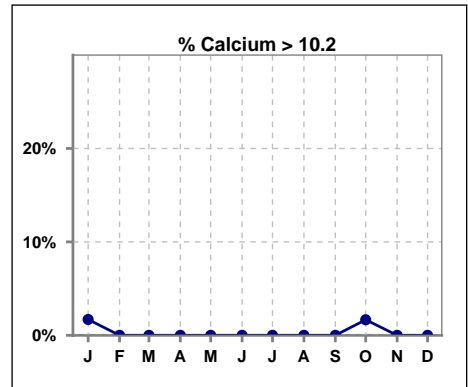
	Jan	Feb	Mar	Apr	May	Jun	Jul	Aug	Sep	Oct	Nov	Dec
# Calcium	59	60	59	57	62	62	61	58	61	60	58	57
# Calcium < 8.5	6	3	7	9	5	11	5	3	5	2	1	9
Pop. Mean	9.3	9.3	9.2	9.3	9.3	9.2	9.2	9.4	9.2	9.3	9.4	8.9
Std. Deviation	0.58	0.55	0.56	0.60	0.51	0.61	0.54	0.51	0.54	0.50	0.46	0.46
% Calcium < 8.5	10%	5%	12%	16%	8%	18%	8%	5%	8%	3%	2%	16%



	Jan	Feb	Mar	Apr	May	Jun	Jul	Aug	Sep	Oct	Nov	Dec
# Calcium	59	60	59	57	62	62	61	58	61	60	58	57
# Calcium 8.5 to 10.2	52	57	52	48	57	51	56	55	56	57	57	48
Pop. Mean	9.3	9.3	9.2	9.3	9.3	9.2	9.2	9.4	9.2	9.3	9.4	8.9
Std. Deviation	0.58	0.55	0.56	0.60	0.51	0.61	0.54	0.51	0.54	0.50	0.46	0.46
% Calcium 8.5 to 10.2	88%	95%	88%	84%	92%	82%	92%	95%	92%	95%	98%	84%



	Jan	Feb	Mar	Apr	May	Jun	Jul	Aug	Sep	Oct	Nov	Dec
# Calcium	59	60	59	57	62	62	61	58	61	60	58	57
# Calcium > 10.2	1	0	0	0	0	0	0	0	0	1	0	0
Pop. Mean	9.3	9.3	9.2	9.3	9.3	9.2	9.2	9.4	9.2	9.3	9.4	8.9
Std. Deviation	0.58	0.55	0.56	0.60	0.51	0.61	0.54	0.51	0.54	0.50	0.46	0.46
% Calcium > 10.2	2%	0%	0%	0%	0%	0%	0%	0%	0%	2%	0%	0%

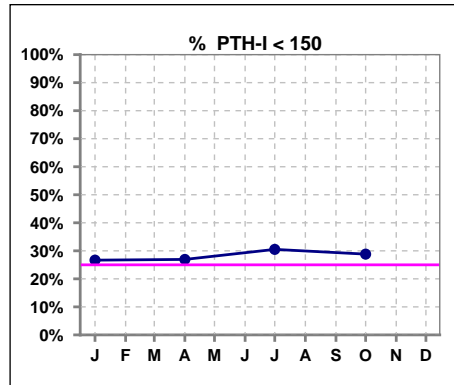


Methodology: a) All labs for 'Adequacy of Dialysis', 'Nutrition', 'Osteodystrophy', 'Anemia' and 'Diabetes' based on last value of month; b) BP's and #L processed are average of all values for month; c) Access data takes last access of month; d) Values for SGA and 'Infection Control' use most recent result.

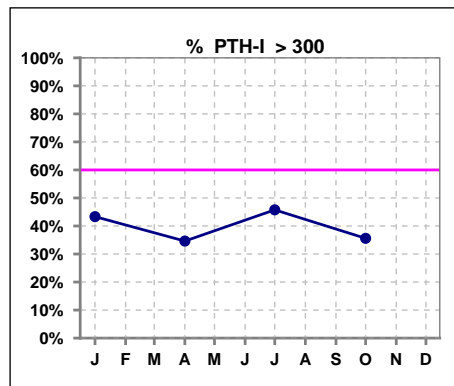
Lab methodology for PTH changed January 2012

**III. OSTEODYSTROPHY - CONT.**

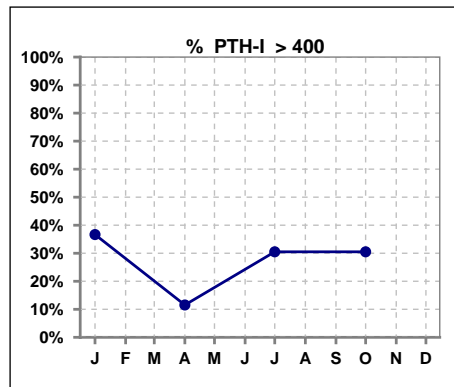
	Jan	Feb	Mar	Apr	May	Jun	Jul	Aug	Sep	Oct	Nov	Dec
# PTH-I	60			52			59			59		
# PTH-I < 150	16			14			18			17		
Pop. Mean	383			259			307			333		
Std. Deviation	406			188			212			284		
% PTH-I < 150	27%			27%			31%			29%		



	Jan	Feb	Mar	Apr	May	Jun	Jul	Aug	Sep	Oct	Nov	Dec
# PTH-I	60			52			59			59		
# PTH-I > 300	26			18			27			21		
Pop. Mean	383			259			307			333		
Std. Deviation	406			188			212			284		
% PTH-I > 300	43%			35%			46%			36%		



	Jan	Feb	Mar	Apr	May	Jun	Jul	Aug	Sep	Oct	Nov	Dec
# PTH-I	60			52			59			59		
# PTH-I > 400	22			6			18			18		
Pop. Mean	383			259			307			333		
Std. Deviation	406			188			212			284		
% PTH-I > 400	37%			12%			31%			31%		

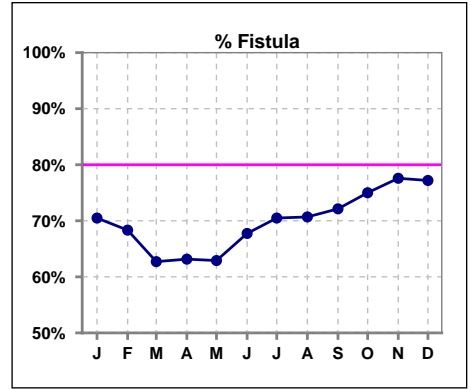


Methodology: a) All labs for 'Adequacy of Dialysis', 'Nutrition', 'Osteodystrophy', 'Anemia' and 'Diabetes' based on last value of month; b) BP's and #L processed are average of all values for month; c) Access data takes last access of month; d) Values for SGA and 'Infection Control' use most recent result.

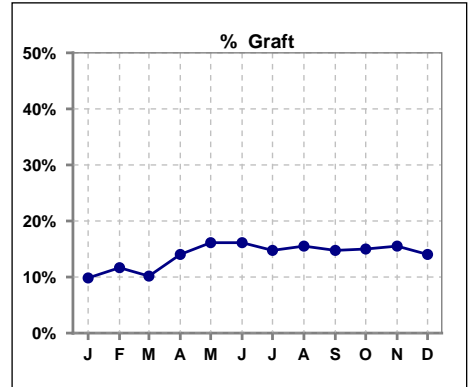


**IV. ACCESS**

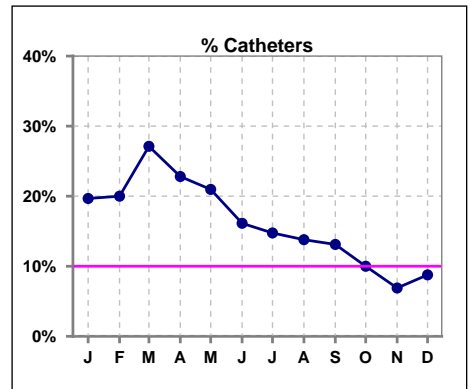
	Jan	Feb	Mar	Apr	May	Jun	Jul	Aug	Sep	Oct	Nov	Dec
# Access	61	60	59	57	62	62	61	58	61	60	58	56
# Fistula	43	41	37	36	39	42	43	41	44	45	45	44
% Fistula	70%	68%	63%	63%	63%	68%	70%	71%	72%	75%	78%	77%



	Jan	Feb	Mar	Apr	May	Jun	Jul	Aug	Sep	Oct	Nov	Dec
# Access	61	60	59	57	62	62	61	58	61	60	58	56
# Graft	6	7	6	8	10	10	9	9	9	9	9	8
% Graft	10%	12%	10%	14%	16%	16%	15%	16%	15%	15%	16%	14%



	Jan	Feb	Mar	Apr	May	Jun	Jul	Aug	Sep	Oct	Nov	Dec
# Access	61	60	59	57	62	62	61	58	61	60	58	56
# Catheters	12	12	16	13	13	10	9	8	8	6	4	5
% Catheters	20%	20%	27%	23%	21%	16%	15%	14%	13%	10%	7%	9%

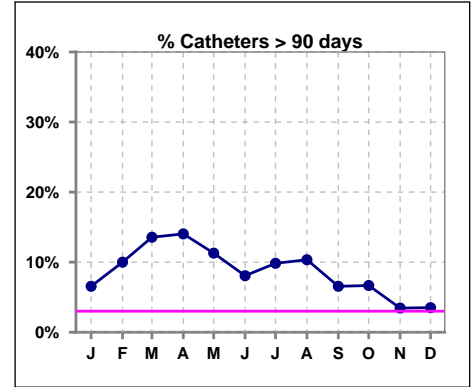


**IV. ACCESS - CONT.**

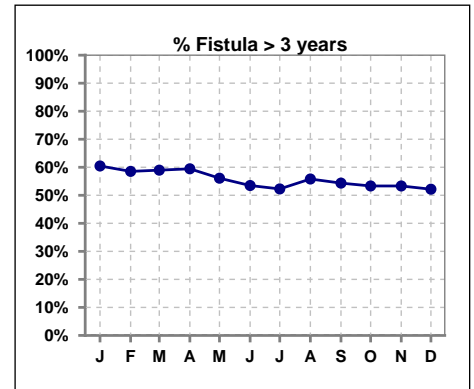
**Catheters > 90 days**

	Jan	Feb	Mar	Apr	May	Jun	Jul	Aug	Sep	Oct	Nov	Dec
<b># Access</b>	61	60	59	57	62	62	61	58	61	60	58	57
<b># Catheters</b>	4	6	8	8	7	5	6	6	4	4	2	2
<b>% Catheters</b>	7%	10%	14%	14%	11%	8%	10%	10%	7%	7%	3%	4%

**Definition:** Catheter in use on last treatment of the month



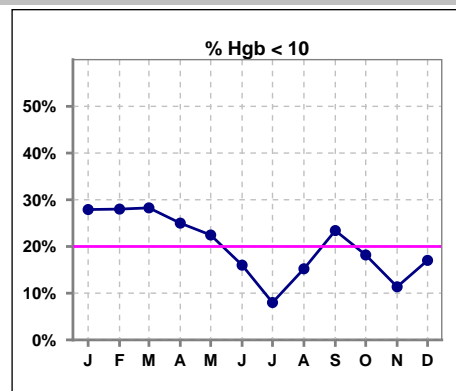
	Jan	Feb	Mar	Apr	May	Jun	Jul	Aug	Sep	Oct	Nov	Dec
<b># Fistula</b>	43	41	39	37	41	43	44	43	46	45	45	46
<b># Fistula &gt; 3 yrs</b>	26	24	23	22	23	23	23	24	25	24	24	24
<b>% Fistula &gt; 3 yrs</b>	60%	59%	59%	59%	56%	53%	52%	56%	54%	53%	53%	52%



**V. ANEMIA**

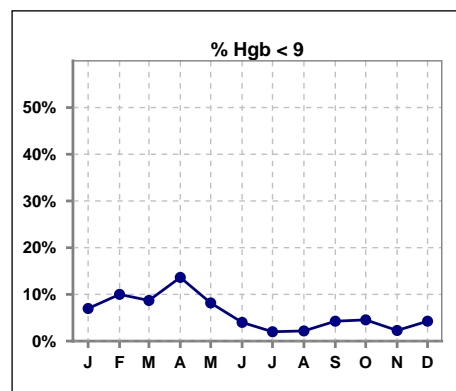
	Jan	Feb	Mar	Apr	May	Jun	Jul	Aug	Sep	Oct	Nov	Dec
# Hgb	43	50	46	44	49	50	50	46	47	44	44	47
# Hgb < 10	12	14	13	11	11	8	4	7	11	8	5	8
Pop. Mean	10.4	10.7	10.5	10.4	10.7	10.7	10.9	10.7	10.6	10.8	11.1	10.8
Std. Deviation	0.9	1.2	1.1	1.0	1.0	0.9	1.0	0.9	0.9	1.0	0.9	1.1
% Hgb < 10	28%	28%	28%	25%	22%	16%	8%	15%	23%	18%	11%	17%

Note: Excludes patients who received no ESA in month.



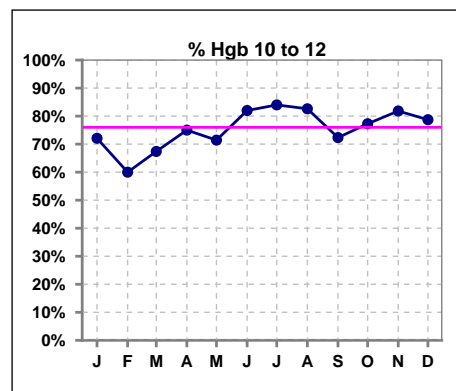
	Jan	Feb	Mar	Apr	May	Jun	Jul	Aug	Sep	Oct	Nov	Dec
# Hgb	43	50	46	44	49	50	50	46	47	44	44	47
# Hgb < 9	3	5	4	6	4	2	1	1	2	2	1	2
Pop. Mean	10.4	10.7	10.5	10.4	10.7	10.7	10.9	10.7	10.6	10.8	11.1	10.8
Std. Deviation	0.9	1.2	1.1	1.0	1.0	0.9	1.0	0.9	0.9	1.0	0.9	1.1
% Hgb < 9	7%	10%	9%	14%	8%	4%	2%	2%	4%	5%	2%	4%

Note: Excludes patients who received no ESA in month.



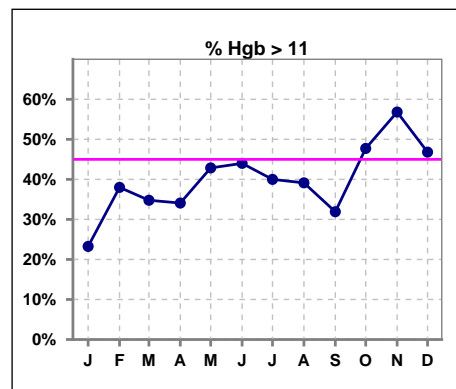
	Jan	Feb	Mar	Apr	May	Jun	Jul	Aug	Sep	Oct	Nov	Dec
# Hgb	43	50	46	44	49	50	50	46	47	44	44	47
# Hgb 10 to 12	31	30	31	33	35	41	42	38	34	34	36	37
Pop. Mean	10.4	10.7	10.5	10.4	10.7	10.7	10.9	10.7	10.6	10.8	11.1	10.8
Std. Deviation	0.9	1.2	1.1	1.0	1.0	0.9	1.0	0.9	0.9	1.0	0.9	1.1
% Hgb 10 to 12	72%	60%	67%	75%	71%	82%	84%	83%	72%	77%	82%	79%

Note: Excludes patients who received no ESA in month.



	Jan	Feb	Mar	Apr	May	Jun	Jul	Aug	Sep	Oct	Nov	Dec
# Hgb	43	50	46	44	49	50	50	46	47	44	44	47
# Hgb > 11	10	19	16	15	21	22	20	18	15	21	25	22
Pop. Mean	10.4	10.7	10.5	10.4	10.7	10.7	10.9	10.7	10.6	10.8	11.1	10.8
Std. Deviation	0.9	1.2	1.1	1.0	1.0	0.9	1.0	0.9	0.9	1.0	0.9	1.1
% Hgb > 11	23%	38%	35%	34%	43%	44%	40%	39%	32%	48%	57%	47%

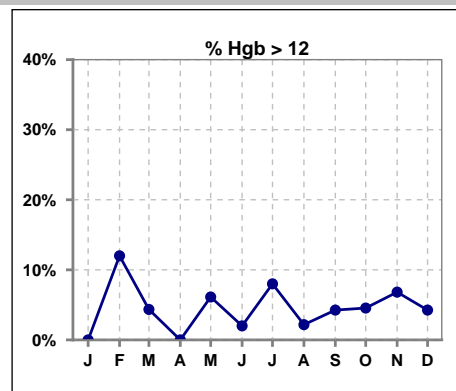
Note: Excludes patients who received no ESA in month.



**V. ANEMIA - CONT.**

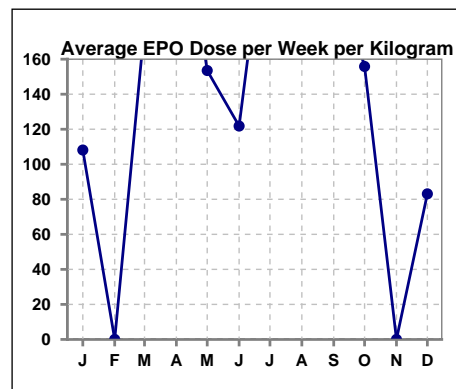
	Jan	Feb	Mar	Apr	May	Jun	Jul	Aug	Sep	Oct	Nov	Dec
# Hgb	43	50	46	44	49	50	50	46	47	44	44	47
# Hgb > 12	0	6	2	0	3	1	4	1	2	2	3	2
Pop. Mean	10.4	10.7	10.5	10.4	10.7	10.7	10.9	10.7	10.6	10.8	11.1	10.8
Std. Deviation	0.9	1.2	1.1	1.0	1.0	0.9	1.0	0.9	0.9	1.0	0.9	1.1
% Hgb > 12	0%	12%	4%	0%	6%	2%	8%	2%	4%	5%	7%	4%

Note: Excludes patients who received no ESA in month.



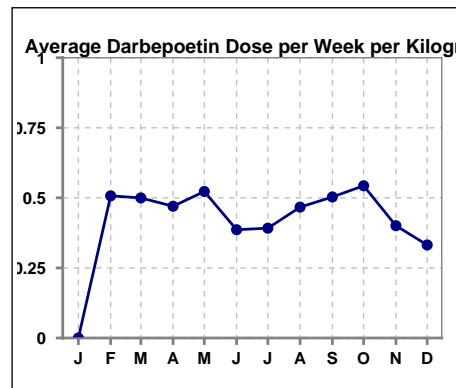
**Average EPO Dose per Week per Kilogram**

	Jan	Feb	Mar	Apr	May	Jun	Jul	Aug	Sep	Oct	Nov	Dec
# Average EPO	108.1	0	178.8	269.3	153.5	121.8	259.7	218.8	214.6	155.8	0	83.1



**Average Darbeopetin Dose per Week per Kilogram**

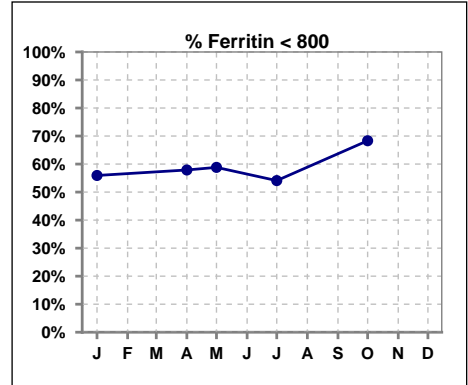
	Jan	Feb	Mar	Apr	May	Jun	Jul	Aug	Sep	Oct	Nov	Dec
# Average Darbeopetin	0	.5	.5	.5	.5	.4	.4	.5	.5	.5	.4	.3



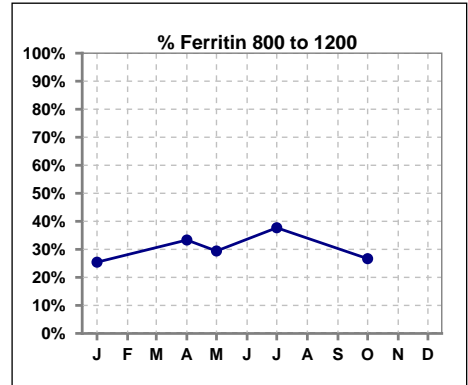
**V. ANEMIA - CONT.**

**Iron Profile**

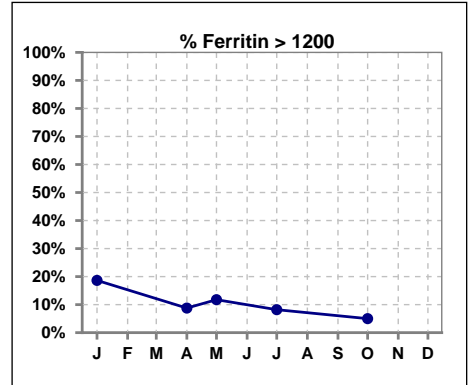
	Jan	Feb	Mar	Apr	May	Jun	Jul	Aug	Sep	Oct	Nov	Dec
# Ferritin	59			57	17		61			60		
# Ferritin < 800	33			33	10		33			41		
Pop. Mean	854			757	657		758			699		
Std. Deviation	444			389	407		323			336		
<b>% Ferritin &lt; 800</b>	<b>56%</b>			<b>58%</b>	<b>59%</b>		<b>54%</b>			<b>68%</b>		



	Jan	Feb	Mar	Apr	May	Jun	Jul	Aug	Sep	Oct	Nov	Dec
# Ferritin	59			57	17		61			60		
# Ferritin 800 to 1200	15			19	5		23			16		
Pop. Mean	854			757	657		758			699		
Std. Deviation	444			389	407		323			336		
<b>% Ferritin 800 to 1200</b>	<b>25%</b>			<b>33%</b>	<b>29%</b>		<b>38%</b>			<b>27%</b>		



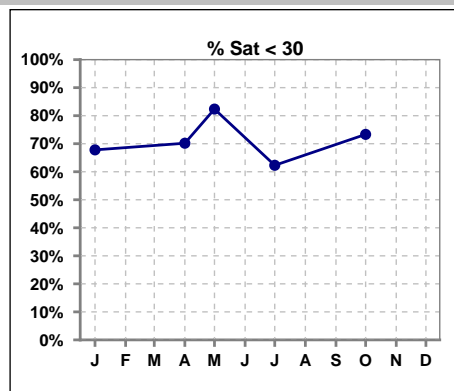
	Jan	Feb	Mar	Apr	May	Jun	Jul	Aug	Sep	Oct	Nov	Dec
# Ferritin	59			57	17		61			60		
# Ferritin > 1200	11			5	2		5			3		
Pop. Mean	854			757	657		758			699		
Std. Deviation	444			389	407		323			336		
<b>% Ferritin &gt; 1200</b>	<b>19%</b>			<b>9%</b>	<b>12%</b>		<b>8%</b>			<b>5%</b>		



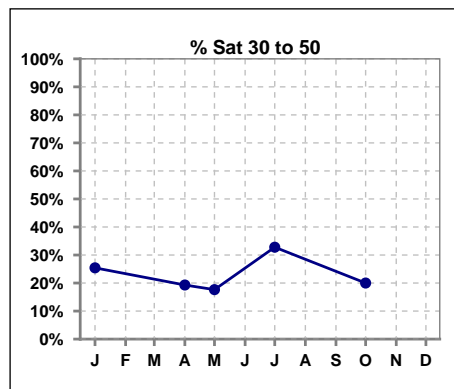
Methodology: a) All labs for 'Adequacy of Dialysis', 'Nutrition', 'Osteodystrophy', 'Anemia' and 'Diabetes' based on last value of month; b) BP's and #L processed are average of all values for month; c) Access data takes last access of month; d) Values for SGA and 'Infection Control' use most recent result.

**V. ANEMIA - CONT.**

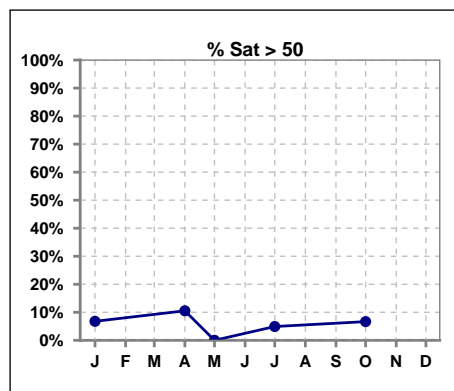
	Jan	Feb	Mar	Apr	May	Jun	Jul	Aug	Sep	Oct	Nov	Dec
# % Sat	59			57	17		61			60		
# % Sat < 30	40			40	14		38			44		
Pop. Mean	28			28	21		28			27		
Std. Deviation	13			17	10		14			15		
<b>% % Sat &lt; 30</b>	<b>68%</b>			<b>70%</b>	<b>82%</b>		<b>62%</b>			<b>73%</b>		



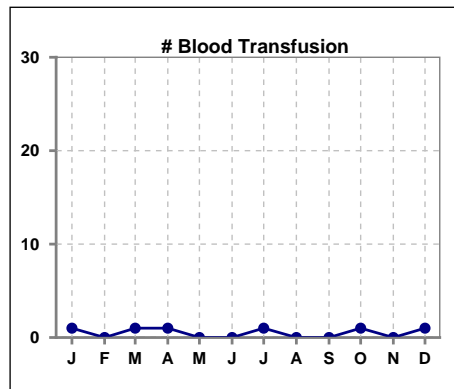
	Jan	Feb	Mar	Apr	May	Jun	Jul	Aug	Sep	Oct	Nov	Dec
# % Sat	59			57	17		61			60		
# % Sat 30 to 50	15			11	3		20			12		
Pop. Mean	28			28	21		28			27		
Std. Deviation	13			17	10		14			15		
<b>% % Sat 30 to 50</b>	<b>25%</b>			<b>19%</b>	<b>18%</b>		<b>33%</b>			<b>20%</b>		



	Jan	Feb	Mar	Apr	May	Jun	Jul	Aug	Sep	Oct	Nov	Dec
# % Sat	59			57	17		61			60		
# % Sat > 50	4			6	0		3			4		
Pop. Mean	28			28	21		28			27		
Std. Deviation	13			17	10		14			15		
<b>% % Sat &gt; 50</b>	<b>7%</b>			<b>11%</b>	<b>0%</b>		<b>5%</b>			<b>7%</b>		



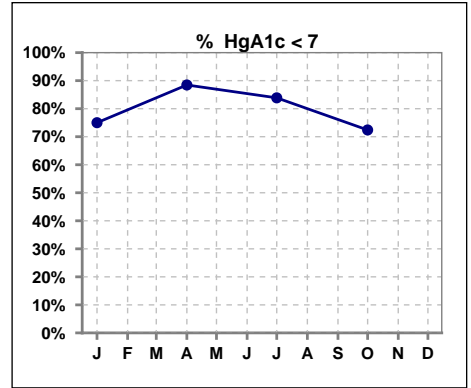
	Jan	Feb	Mar	Apr	May	Jun	Jul	Aug	Sep	Oct	Nov	Dec
# Patient	61	60	59	58	62	62	61	58	61	60	59	57
# Blood Transfusion	1	0	1	1	0	0	1	0	0	1	0	1



Methodology: a) All labs for 'Adequacy of Dialysis', 'Nutrition', 'Osteodystrophy', 'Anemia' and 'Diabetes' based on last value of month; b) BP's and #L processed are average of all values for month; c) Access data takes last access of month; d) Values for SGA and 'Infection Control' use most recent result.

**VI. Diabetes**

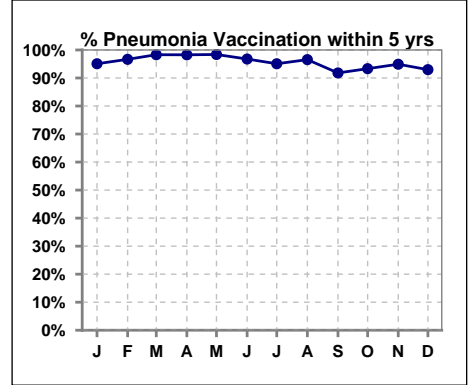
	Jan	Feb	Mar	Apr	May	Jun	Jul	Aug	Sep	Oct	Nov	Dec
# HgA1c	24			26			31			29		
# HgA1c < 7	18			23			26			21		
Pop. Mean	6.3			6.0			6.1			6.5		
Std. Deviation	0.97			0.87			1.06			1.37		
<b>% HgA1c &lt; 7</b>	<b>75%</b>			<b>88%</b>			<b>84%</b>			<b>72%</b>		



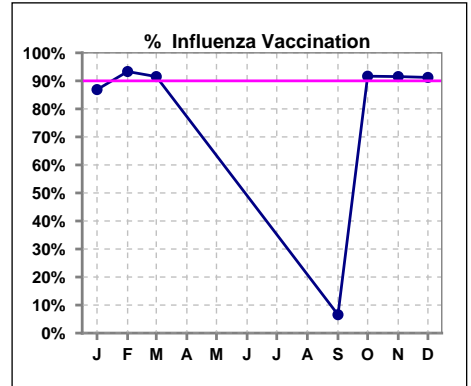
**VII. Infection Control**

**Pneumonia vaccination within the past five years**

	Jan	Feb	Mar	Apr	May	Jun	Jul	Aug	Sep	Oct	Nov	Dec
# Patient	61	60	59	58	62	62	61	58	61	60	59	57
# Pneumonia	58	58	58	57	61	60	58	56	56	56	56	53
% Pneumonia	95%	97%	98%	98%	98%	97%	95%	97%	92%	93%	95%	93%



	Jan	Feb	Mar	Apr	May	Jun	Jul	Aug	Sep	Oct	Nov	Dec
# Patient	61	60	59						61	60	59	57
# Influenza	53	56	54						4	55	54	52
% Influenza	87%	93%	92%						7%	92%	92%	91%

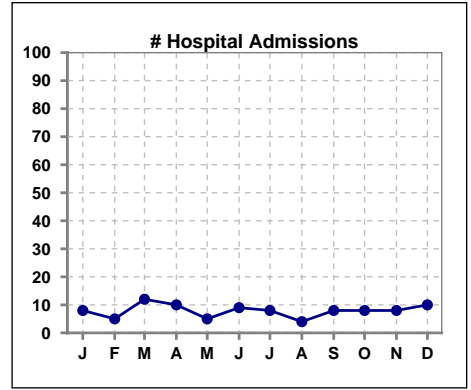


Methodology: a) All labs for 'Adequacy of Dialysis', 'Nutrition', 'Osteodystrophy', 'Anemia' and 'Diabetes' based on last value of month; b) BP's and #L processed are average of all values for month; c) Access data takes last access of month; d) Values for SGA and 'Infection Control' use most recent result.

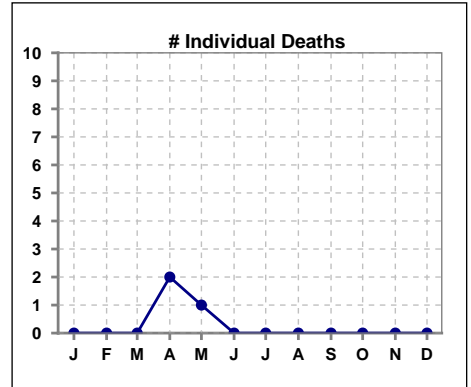


**VIII. Outcome measures**

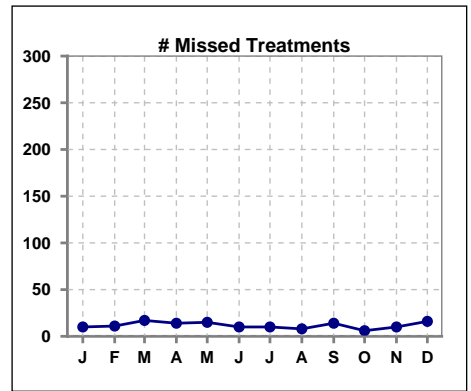
	Jan	Feb	Mar	Apr	May	Jun	Jul	Aug	Sep	Oct	Nov	Dec
<b># Patient</b>	61	60	59	58	62	62	61	58	61	60	59	57
<b># Hospital Admissions</b>	8	5	12	10	5	9	8	4	8	8	8	10



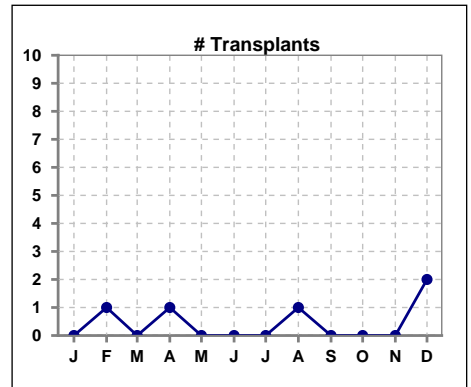
	Jan	Feb	Mar	Apr	May	Jun	Jul	Aug	Sep	Oct	Nov	Dec
<b># Patient</b>	61	60	59	58	62	62	61	58	61	60	59	57
<b># Individual Deaths</b>	0	0	0	2	1	0	0	0	0	0	0	0



	Jan	Feb	Mar	Apr	May	Jun	Jul	Aug	Sep	Oct	Nov	Dec
<b># Patient</b>	61	60	59	58	62	62	61	58	61	60	59	57
<b># Missed Treatments</b>	10	11	17	14	15	10	10	8	14	6	10	16



	Jan	Feb	Mar	Apr	May	Jun	Jul	Aug	Sep	Oct	Nov	Dec
<b># Patient</b>	61	60	59	58	62	62	61	58	61	60	59	57
<b># Transplants</b>	0	1	0	1	0	0	0	1	0	0	0	2



Methodology: a) All labs for 'Adequacy of Dialysis', 'Nutrition', 'Osteodystrophy', 'Anemia' and 'Diabetes' based on last value of month; b) BP's and #L processed are average of all values for month; c) Access data takes last access of month; d) Values for SGA and 'Infection Control' use most recent result.