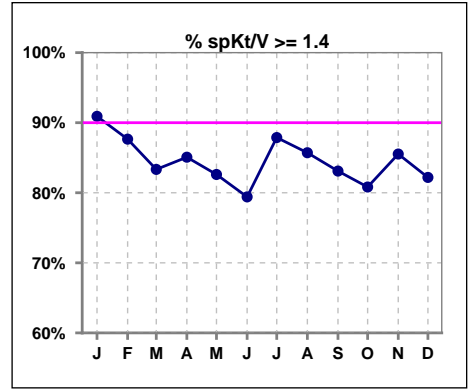
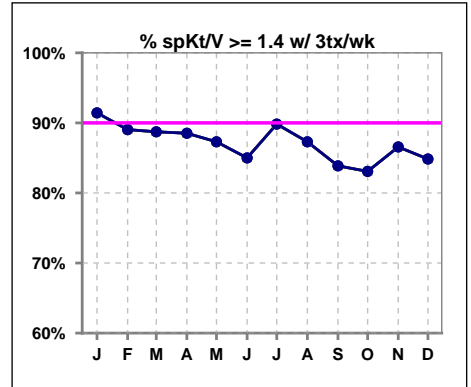


**I. ADEQUACY OF DIALYSIS**

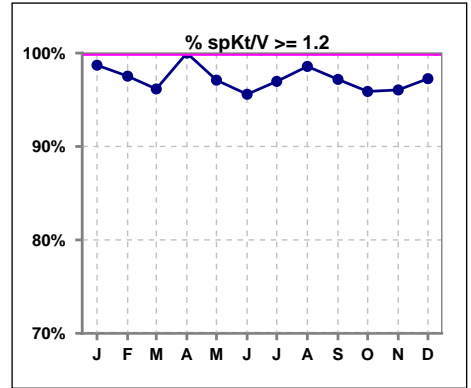
	Jan	Feb	Mar	Apr	May	Jun	Jul	Aug	Sep	Oct	Nov	Dec
# spKt/V	77	81	78	67	69	68	66	70	71	73	76	73
# spKt/V >= 1.4	70	71	65	57	57	54	58	60	59	59	65	60
Pop. Mean	1.73	1.66	1.65	1.69	1.65	1.64	1.67	1.67	1.64	1.62	1.65	1.71
Std. Deviation	0.29	0.29	0.32	0.27	0.29	0.32	0.26	0.27	0.29	0.28	0.29	0.32
% spKt/V >= 1.4	91%	88%	83%	85%	83%	79%	88%	86%	83%	81%	86%	82%



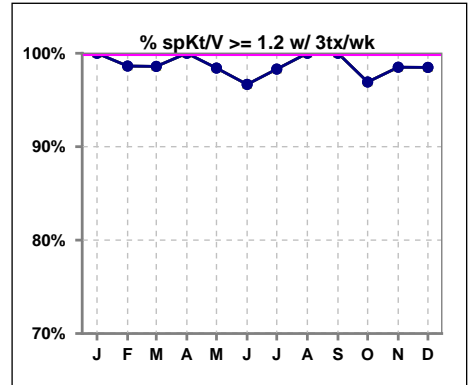
	Jan	Feb	Mar	Apr	May	Jun	Jul	Aug	Sep	Oct	Nov	Dec
# spKt/V w/ 3tx/wk	70	73	71	61	63	60	59	63	62	65	67	66
# spKt/V >= 1.4 w/3tx/wk	64	65	63	54	55	51	53	55	52	54	58	56
Pop. Mean	1.74	1.67	1.67	1.70	1.66	1.66	1.68	1.68	1.66	1.63	1.66	1.72
Std. Deviation	0.27	0.28	0.29	0.25	0.26	0.31	0.23	0.25	0.27	0.26	0.26	0.31
% >= 1.4 w/3tx/wk	91%	89%	89%	89%	87%	85%	90%	87%	84%	83%	87%	85%



	Jan	Feb	Mar	Apr	May	Jun	Jul	Aug	Sep	Oct	Nov	Dec
# spKt/V	77	81	78	67	69	68	66	70	71	73	76	73
# spKt/V >= 1.2	76	79	75	67	67	65	64	69	69	70	73	71
Pop. Mean	1.73	1.66	1.65	1.69	1.65	1.64	1.67	1.67	1.64	1.62	1.65	1.71
Std. Deviation	0.29	0.29	0.32	0.27	0.29	0.32	0.26	0.27	0.29	0.28	0.29	0.32
% spKt/V >= 1.2	99%	98%	96%	100%	97%	96%	97%	99%	97%	96%	96%	97%



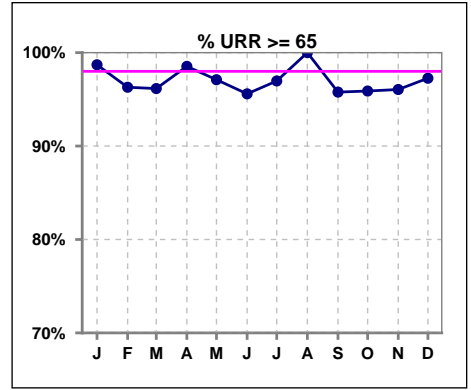
	Jan	Feb	Mar	Apr	May	Jun	Jul	Aug	Sep	Oct	Nov	Dec
# spKt/V w/ 3tx/wk	70	73	71	61	63	60	59	63	62	65	67	66
# spKt/V >= 1.2 w/3tx/wk	70	72	70	61	62	58	58	63	62	63	66	65
Pop. Mean	1.74	1.67	1.67	1.70	1.66	1.66	1.68	1.68	1.66	1.63	1.66	1.72
Std. Deviation	0.27	0.28	0.29	0.25	0.26	0.31	0.23	0.25	0.27	0.26	0.26	0.31
% >= 1.2 w/3tx/wk	100%	99%	99%	100%	98%	97%	98%	100%	100%	97%	99%	98%



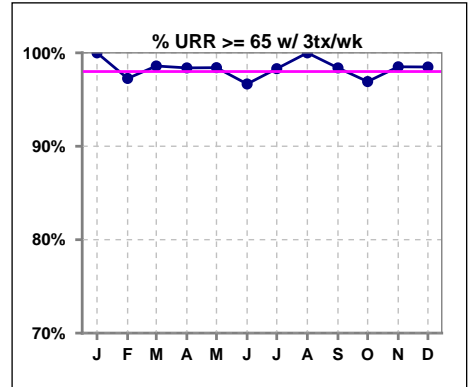
Methodology: a) All labs for 'Adequacy of Dialysis', 'Nutrition', 'Osteodystrophy', 'Anemia' and 'Diabetes' based on last value of month; b) BP's and #L processed are average of all values for month; c) Access data takes last access of month; d) Values for SGA and 'Infection Control' use most recent result.

**I. ADEQUACY OF DIALYSIS - CONT.**

	Jan	Feb	Mar	Apr	May	Jun	Jul	Aug	Sep	Oct	Nov	Dec
# URR	77	81	78	68	69	68	66	70	71	73	76	73
# URR >= 65	76	78	75	67	67	65	64	70	68	70	73	71
Pop. Mean	77	76	76	76	76	76	77	76	76	75	76	77
Std. Deviation	5.01	5.74	6.04	7.53	5.71	7.57	5.03	5.13	5.32	5.55	5.72	6.44
% URR >= 65	99%	96%	96%	99%	97%	96%	97%	100%	96%	96%	96%	97%



	Jan	Feb	Mar	Apr	May	Jun	Jul	Aug	Sep	Oct	Nov	Dec
# URR w/ 3tx/wk	70	73	71	62	63	60	59	63	62	65	67	66
# URR >=65 w/ 3tx/wk	70	71	70	61	62	58	58	63	61	63	66	65
Pop. Mean	78	76	76	76	76	76	77	77	76	76	76	77
Std. Deviation	4.67	5.52	5.55	7.55	5.23	7.65	4.63	4.96	5.01	5.09	4.81	6.23
% URR >=65 w/ 3tx/wk	100%	97%	99%	98%	98%	97%	98%	100%	98%	97%	99%	98%

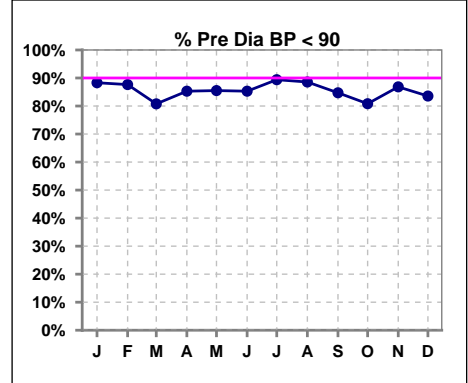


Methodology: a) All labs for 'Adequacy of Dialysis', 'Nutrition', 'Osteodystrophy', 'Anemia' and 'Diabetes' based on last value of month; b) BP's and #L processed are average of all values for month; c) Access data takes last access of month; d) Values for SGA and 'Infection Control' use most recent result.

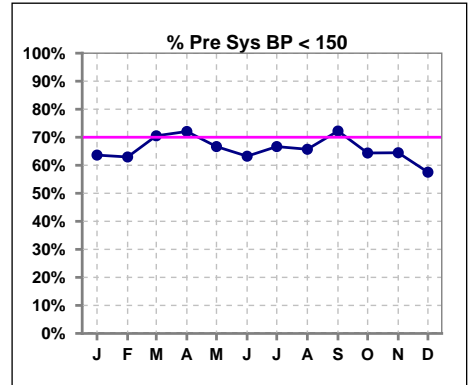
**I. ADEQUACY OF DIALYSIS - CONT.**

**Blood Pressure Control (Pre)**

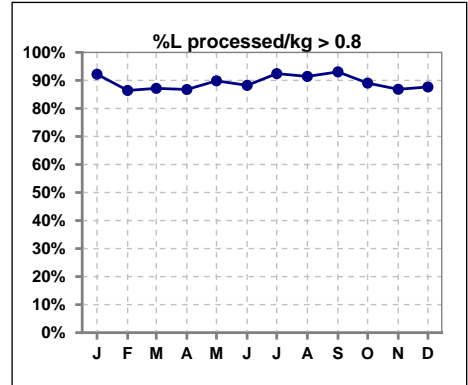
	Jan	Feb	Mar	Apr	May	Jun	Jul	Aug	Sep	Oct	Nov	Dec
# Pre Dia BP	77	81	78	68	69	68	66	70	72	73	76	73
# Pre Dia BP < 90	68	71	63	58	59	58	59	62	61	59	66	61
Pop. Mean	75	75	75	74	74	76	75	75	75	76	77	77
Std. Deviation	13.4	13.2	12.9	14.1	13.9	13.3	12.7	12.5	12.6	12.5	12.6	12.4
<b>% Pre Dia BP &lt; 90</b>	<b>88%</b>	<b>88%</b>	<b>81%</b>	<b>85%</b>	<b>86%</b>	<b>85%</b>	<b>89%</b>	<b>89%</b>	<b>85%</b>	<b>81%</b>	<b>87%</b>	<b>84%</b>



	Jan	Feb	Mar	Apr	May	Jun	Jul	Aug	Sep	Oct	Nov	Dec
# Pre Sys BP	77	81	78	68	69	68	66	70	72	73	76	73
# Pre Sys BP < 150	49	51	55	49	46	43	44	46	52	47	49	42
Pop. Mean	140	140	141	140	140	142	140	140	139	142	144	144
Std. Deviation	23.0	23.7	23.0	25.2	23.7	22.9	21.8	20.6	21.6	19.3	19.9	19.5
<b>%Pre Sys BP &lt;150</b>	<b>64%</b>	<b>63%</b>	<b>71%</b>	<b>72%</b>	<b>67%</b>	<b>63%</b>	<b>67%</b>	<b>66%</b>	<b>72%</b>	<b>64%</b>	<b>64%</b>	<b>58%</b>



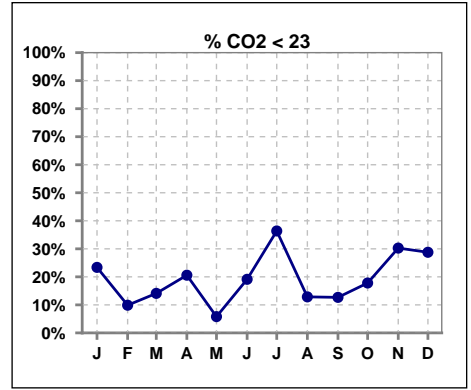
	Jan	Feb	Mar	Apr	May	Jun	Jul	Aug	Sep	Oct	Nov	Dec
# L processed/kg	77	81	78	68	69	68	66	70	72	73	76	73
# L processed/kg>0.8	71	70	68	59	62	60	61	64	67	65	66	64
Pop. Mean	1	1	1	1	1	1	1	1	1	1	1	1
Std. Deviation	0.3	0.3	0.3	0.3	0.2	0.3	0.2	0.2	0.3	0.3	0.3	0.3
<b>% L processed/kg&gt;0.8</b>	<b>92%</b>	<b>86%</b>	<b>87%</b>	<b>87%</b>	<b>90%</b>	<b>88%</b>	<b>92%</b>	<b>91%</b>	<b>93%</b>	<b>89%</b>	<b>87%</b>	<b>88%</b>



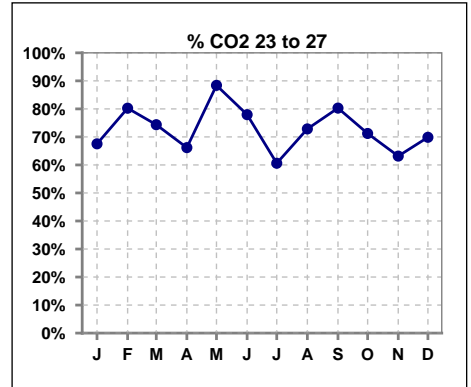
Methodology: a) All labs for 'Adequacy of Dialysis', 'Nutrition', 'Osteodystrophy', 'Anemia' and 'Diabetes' based on last value of month; b) BP's and #L processed are average of all values for month; c) Access data takes last access of month; d) Values for SGA and 'Infection Control' use most recent result.

**I. ADEQUACY OF DIALYSIS - CONT.**

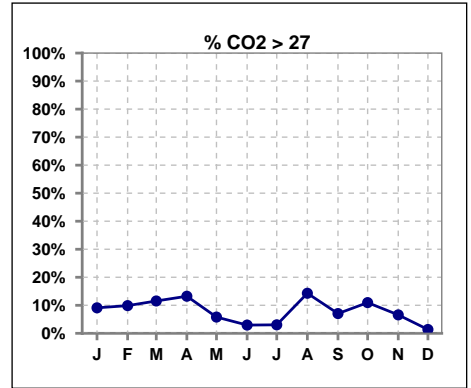
	Jan	Feb	Mar	Apr	May	Jun	Jul	Aug	Sep	Oct	Nov	Dec
# CO2	77	81	78	68	69	68	66	70	71	73	76	73
# CO2 < 23	18	8	11	14	4	13	24	9	9	13	23	21
Pop. Mean	24	25	25	25	25	24	23	25	25	25	24	24
Std. Deviation	2.19	1.89	2.14	2.40	1.71	1.91	2.12	2.10	1.99	2.33	2.54	1.99
% CO2 < 23	23%	10%	14%	21%	6%	19%	36%	13%	13%	18%	30%	29%



	Jan	Feb	Mar	Apr	May	Jun	Jul	Aug	Sep	Oct	Nov	Dec
# CO2	77	81	78	68	69	68	66	70	71	73	76	73
# CO2 23 to 27	52	65	58	45	61	53	40	51	57	52	48	51
Pop. Mean	24	25	25	25	25	24	23	25	25	25	24	24
Std. Deviation	2.19	1.89	2.14	2.40	1.71	1.91	2.12	2.10	1.99	2.33	2.54	1.99
% CO2 23 to 27	68%	80%	74%	66%	88%	78%	61%	73%	80%	71%	63%	70%



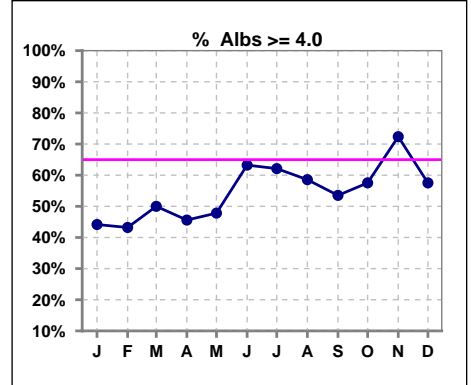
	Jan	Feb	Mar	Apr	May	Jun	Jul	Aug	Sep	Oct	Nov	Dec
# CO2	77	81	78	68	69	68	66	70	71	73	76	73
# CO2 > 27	7	8	9	9	4	2	2	10	5	8	5	1
Pop. Mean	24	25	25	25	25	24	23	25	25	25	24	24
Std. Deviation	2.19	1.89	2.14	2.40	1.71	1.91	2.12	2.10	1.99	2.33	2.54	1.99
% CO2 > 27	9%	10%	12%	13%	6%	3%	3%	14%	7%	11%	7%	1%



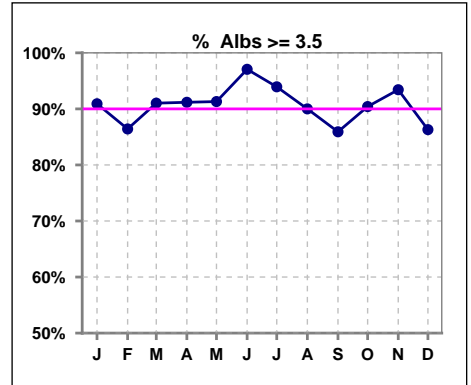
\*Albumin values use BCG method - as of July 2001

**II. NUTRITION**

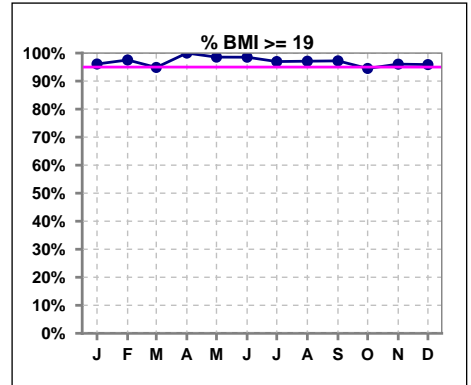
	Jan	Feb	Mar	Apr	May	Jun	Jul	Aug	Sep	Oct	Nov	Dec
# Albumin	77	81	78	68	69	68	66	70	71	73	76	73
# Albumin >= 4.0	34	35	39	31	33	43	41	41	38	42	55	42
Pop. Mean	3.9	3.9	4.0	3.9	3.9	4.0	4.0	4.0	3.9	4.0	4.1	4.0
Std. Deviation	0.35	0.39	0.41	0.35	0.39	0.34	0.33	0.35	0.38	0.36	0.39	0.45
% Alb >= 4.0	44%	43%	50%	46%	48%	63%	62%	59%	54%	58%	72%	58%



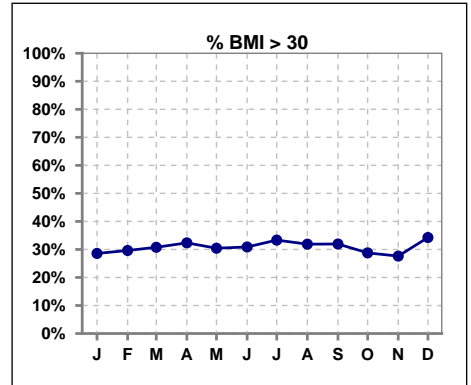
	Jan	Feb	Mar	Apr	May	Jun	Jul	Aug	Sep	Oct	Nov	Dec
# Albumin	77	81	78	68	69	68	66	70	71	73	76	73
# Albumin >= 3.5	70	70	71	62	63	66	62	63	61	66	71	63
Pop. Mean	3.9	3.9	4.0	3.9	3.9	4.0	4.0	4.0	3.9	4.0	4.1	4.0
Std. Deviation	0.35	0.39	0.41	0.35	0.39	0.34	0.33	0.35	0.38	0.36	0.39	0.45
% Alb >= 3.5	91%	86%	91%	91%	91%	97%	94%	90%	86%	90%	93%	86%



	Jan	Feb	Mar	Apr	May	Jun	Jul	Aug	Sep	Oct	Nov	Dec
# BMI	77	81	78	68	69	68	66	69	72	73	76	73
# BMI >= 19	74	79	74	68	68	67	64	67	70	69	73	70
Pop. Mean	27	27	27	28	27	28	28	28	28	27	28	28
Std. Deviation	6.3	6.3	6.4	6.3	6.2	7.0	7.0	6.9	6.3	6.9	6.8	7.1
% BMI >= 19	96%	98%	95%	100%	99%	99%	97%	97%	97%	95%	96%	96%



	Jan	Feb	Mar	Apr	May	Jun	Jul	Aug	Sep	Oct	Nov	Dec
# BMI	77	81	78	68	69	68	66	69	72	73	76	73
# BMI > 30	22	24	24	22	21	21	22	22	23	21	21	25
Pop. Mean	27	27	27	28	27	28	28	28	28	27	28	28
Std. Deviation	6.3	6.3	6.4	6.3	6.2	7.0	7.0	6.9	6.3	6.9	6.8	7.1
% BMI > 30	29%	30%	31%	32%	30%	31%	33%	32%	32%	29%	28%	34%

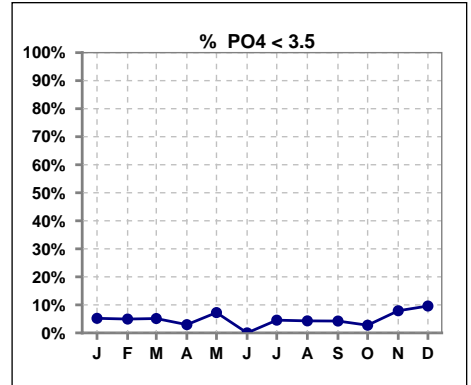


Methodology: a) All labs for 'Adequacy of Dialysis', 'Nutrition', 'Osteodystrophy', 'Anemia' and 'Diabetes' based on last value of month; b) BP's and #L processed are average of all values for month; c) Access data takes last access of month; d) Values for SGA and 'Infection Control' use most recent result.

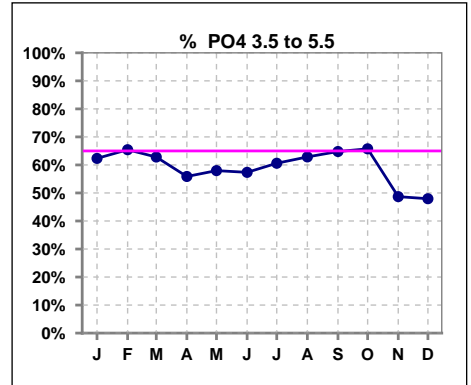
Lab methodology for PTH changed January 2012

**III. OSTEODYSTROPHY**

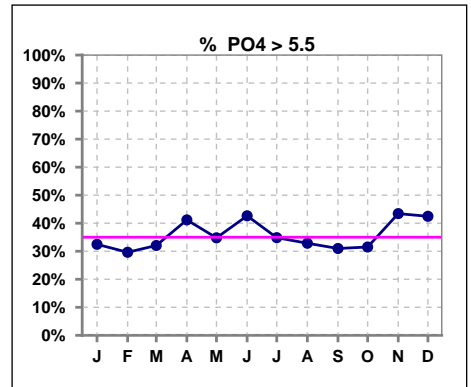
	Jan	Feb	Mar	Apr	May	Jun	Jul	Aug	Sep	Oct	Nov	Dec
# PO4	77	81	78	68	69	68	66	70	71	73	76	73
# PO4 < 3.5	4	4	4	2	5	0	3	3	3	2	6	7
Pop. Mean	5.4	5.3	5.4	5.6	5.4	5.6	5.6	5.7	5.5	5.5	5.6	5.5
Std. Deviation	1.62	1.69	1.55	1.61	1.80	1.39	1.63	2.04	1.72	1.63	1.61	1.60
% PO4 < 3.5	5%	5%	5%	3%	7%	0%	5%	4%	4%	3%	8%	10%



	Jan	Feb	Mar	Apr	May	Jun	Jul	Aug	Sep	Oct	Nov	Dec
# PO4	77	81	78	68	69	68	66	70	71	73	76	73
# PO4 3.5 to 5.5	48	53	49	38	40	39	40	44	46	48	37	35
Pop. Mean	5.4	5.3	5.4	5.6	5.4	5.6	5.6	5.7	5.5	5.5	5.6	5.5
Std. Deviation	1.62	1.69	1.55	1.61	1.80	1.39	1.63	2.04	1.72	1.63	1.61	1.60
% PO4 3.5 to 5.5	62%	65%	63%	56%	58%	57%	61%	63%	65%	66%	49%	48%



	Jan	Feb	Mar	Apr	May	Jun	Jul	Aug	Sep	Oct	Nov	Dec
# PO4	77	81	78	68	69	68	66	70	71	73	76	73
# PO4 > 5.5	25	24	25	28	24	29	23	23	22	23	33	31
Pop. Mean	5.4	5.3	5.4	5.6	5.4	5.6	5.6	5.7	5.5	5.5	5.6	5.5
Std. Deviation	1.62	1.69	1.55	1.61	1.80	1.39	1.63	2.04	1.72	1.63	1.61	1.60
% PO4 > 5.5	32%	30%	32%	41%	35%	43%	35%	33%	31%	32%	43%	42%

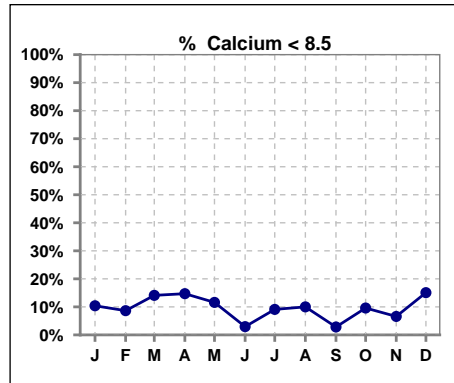


Methodology: a) All labs for 'Adequacy of Dialysis', 'Nutrition', 'Osteodystrophy', 'Anemia' and 'Diabetes' based on last value of month; b) BP's and #L processed are average of all values for month; c) Access data takes last access of month; d) Values for SGA and 'Infection Control' use most recent result.

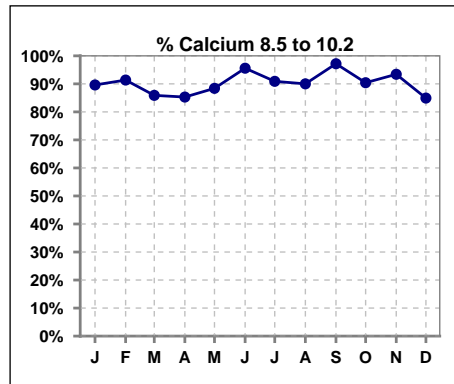
Lab methodology for PTH changed January 2012

**III. OSTEODYSTROPHY - CONT.**

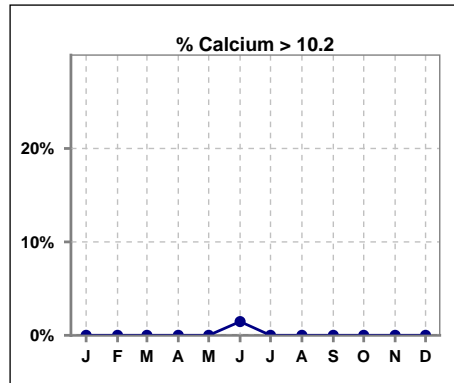
	Jan	Feb	Mar	Apr	May	Jun	Jul	Aug	Sep	Oct	Nov	Dec
# Calcium	77	81	78	68	69	68	66	70	71	73	76	73
# Calcium < 8.5	8	7	11	10	8	2	6	7	2	7	5	11
Pop. Mean	9.2	9.3	9.1	9.1	9.2	9.4	9.3	9.3	9.2	9.3	9.3	9.0
Std. Deviation	0.64	0.59	0.55	0.61	0.64	0.54	0.56	0.66	0.51	0.58	0.58	0.56
% Calcium < 8.5	10%	9%	14%	15%	12%	3%	9%	10%	3%	10%	7%	15%



	Jan	Feb	Mar	Apr	May	Jun	Jul	Aug	Sep	Oct	Nov	Dec
# Calcium	77	81	78	68	69	68	66	70	71	73	76	73
# Calcium 8.5 to 10.2	69	74	67	58	61	65	60	63	69	66	71	62
Pop. Mean	9.2	9.3	9.1	9.1	9.2	9.4	9.3	9.3	9.2	9.3	9.3	9.0
Std. Deviation	0.64	0.59	0.55	0.61	0.64	0.54	0.56	0.66	0.51	0.58	0.58	0.56
% Calcium 8.5 to 10.2	90%	91%	86%	85%	88%	96%	91%	90%	97%	90%	93%	85%



	Jan	Feb	Mar	Apr	May	Jun	Jul	Aug	Sep	Oct	Nov	Dec
# Calcium	77	81	78	68	69	68	66	70	71	73	76	73
# Calcium > 10.2	0	0	0	0	0	1	0	0	0	0	0	0
Pop. Mean	9.2	9.3	9.1	9.1	9.2	9.4	9.3	9.3	9.2	9.3	9.3	9.0
Std. Deviation	0.64	0.59	0.55	0.61	0.64	0.54	0.56	0.66	0.51	0.58	0.58	0.56
% Calcium > 10.2	0%	0%	0%	0%	0%	1%	0%	0%	0%	0%	0%	0%

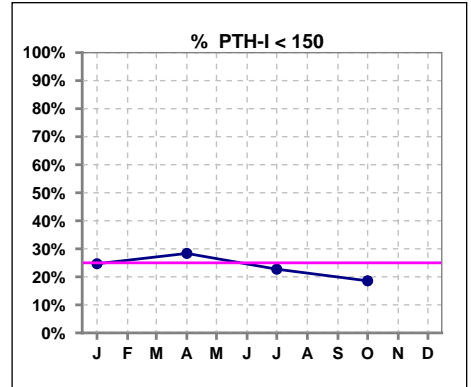


Methodology: a) All labs for 'Adequacy of Dialysis', 'Nutrition', 'Osteodystrophy', 'Anemia' and 'Diabetes' based on last value of month; b) BP's and #L processed are average of all values for month; c) Access data takes last access of month; d) Values for SGA and 'Infection Control' use most recent result.

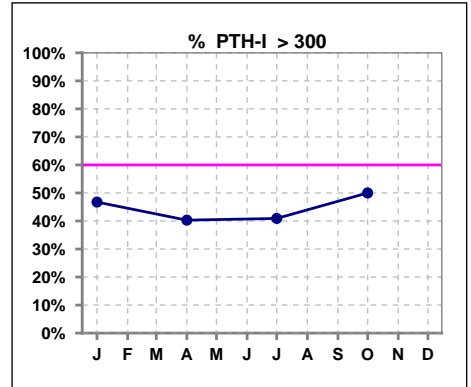
Lab methodology for PTH changed January 2012

**III. OSTEODYSTROPHY - CONT.**

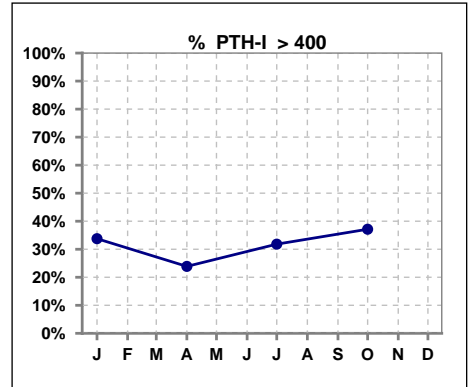
	Jan	Feb	Mar	Apr	May	Jun	Jul	Aug	Sep	Oct	Nov	Dec
# PTH-I	77			67			66			70		
# PTH-I < 150	19			19			15			13		
Pop. Mean	357			300			319			350		
Std. Deviation	287			216			233			231		
% PTH-I < 150	25%			28%			23%			19%		



	Jan	Feb	Mar	Apr	May	Jun	Jul	Aug	Sep	Oct	Nov	Dec
# PTH-I	77			67			66			70		
# PTH-I > 300	36			27			27			35		
Pop. Mean	357			300			319			350		
Std. Deviation	287			216			233			231		
% PTH-I > 300	47%			40%			41%			50%		



	Jan	Feb	Mar	Apr	May	Jun	Jul	Aug	Sep	Oct	Nov	Dec
# PTH-I	77			67			66			70		
# PTH-I > 400	26			16			21			26		
Pop. Mean	357			300			319			350		
Std. Deviation	287			216			233			231		
% PTH-I > 400	34%			24%			32%			37%		

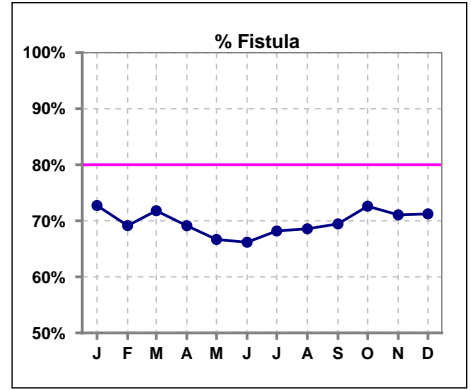


Methodology: a) All labs for 'Adequacy of Dialysis', 'Nutrition', 'Osteodystrophy', 'Anemia' and 'Diabetes' based on last value of month; b) BP's and #L processed are average of all values for month; c) Access data takes last access of month; d) Values for SGA and 'Infection Control' use most recent result.

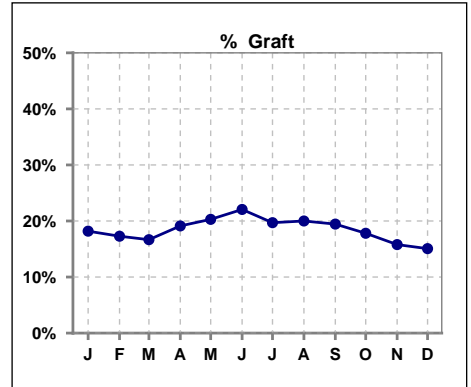


**IV. ACCESS**

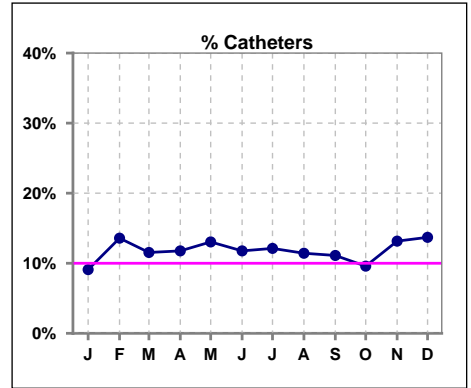
	Jan	Feb	Mar	Apr	May	Jun	Jul	Aug	Sep	Oct	Nov	Dec
# Access	77	81	78	68	69	68	66	70	72	73	76	73
# Fistula	56	56	56	47	46	45	45	48	50	53	54	52
% Fistula	73%	69%	72%	69%	67%	66%	68%	69%	69%	73%	71%	71%



	Jan	Feb	Mar	Apr	May	Jun	Jul	Aug	Sep	Oct	Nov	Dec
# Access	77	81	78	68	69	68	66	70	72	73	76	73
# Graft	14	14	13	13	14	15	13	14	14	13	12	11
% Graft	18%	17%	17%	19%	20%	22%	20%	20%	19%	18%	16%	15%



	Jan	Feb	Mar	Apr	May	Jun	Jul	Aug	Sep	Oct	Nov	Dec
# Access	77	81	78	68	69	68	66	70	72	73	76	73
# Catheters	7	11	9	8	9	8	8	8	8	7	10	10
% Catheters	9%	14%	12%	12%	13%	12%	12%	11%	11%	10%	13%	14%



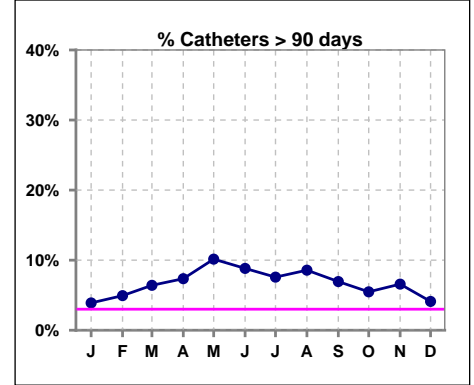
Methodology: a) All labs for 'Adequacy of Dialysis', 'Nutrition', 'Osteodystrophy', 'Anemia' and 'Diabetes' based on last value of month; b) BP's and #L processed are average of all values for month; c) Access data takes last access of month; d) Values for SGA and 'Infection Control' use most recent result.

**IV. ACCESS - CONT.**

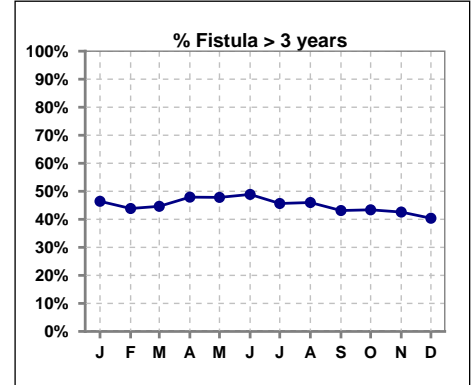
**Catheters > 90 days**

	Jan	Feb	Mar	Apr	May	Jun	Jul	Aug	Sep	Oct	Nov	Dec
# Access	77	81	78	68	69	68	66	70	72	73	76	73
# Catheters	3	4	5	5	7	6	5	6	5	4	5	3
<b>% Catheters</b>	<b>4%</b>	<b>5%</b>	<b>6%</b>	<b>7%</b>	<b>10%</b>	<b>9%</b>	<b>8%</b>	<b>9%</b>	<b>7%</b>	<b>5%</b>	<b>7%</b>	<b>4%</b>

Definition: Catheter in use on last treatment of the month



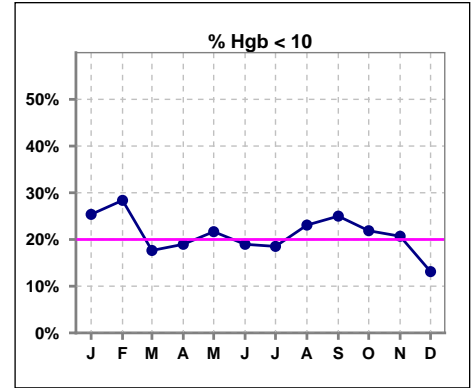
	Jan	Feb	Mar	Apr	May	Jun	Jul	Aug	Sep	Oct	Nov	Dec
# Fistula	56	57	56	48	46	45	46	50	51	53	54	52
# Fistula > 3 yrs	26	25	25	23	22	22	21	23	22	23	23	21
<b>% Fistula &gt; 3 yrs</b>	<b>46%</b>	<b>44%</b>	<b>45%</b>	<b>48%</b>	<b>48%</b>	<b>49%</b>	<b>46%</b>	<b>46%</b>	<b>43%</b>	<b>43%</b>	<b>43%</b>	<b>40%</b>



**V. ANEMIA**

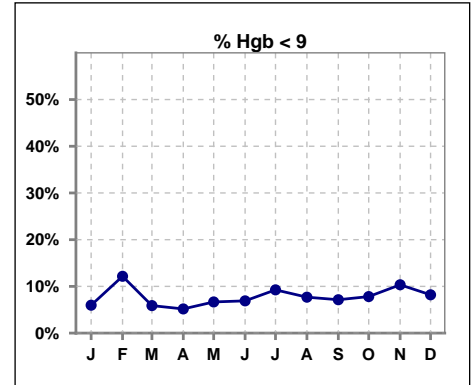
	Jan	Feb	Mar	Apr	May	Jun	Jul	Aug	Sep	Oct	Nov	Dec
# Hgb	67	74	68	58	60	58	54	52	56	64	58	61
# Hgb < 10	17	21	12	11	13	11	10	12	14	14	12	8
Pop. Mean	10.5	10.5	10.6	10.7	10.7	10.8	10.7	10.6	10.5	10.7	10.6	10.9
Std. Deviation	1.0	1.1	0.9	1.0	1.0	1.1	1.1	1.1	1.0	1.1	1.2	1.2
% Hgb < 10	25%	28%	18%	19%	22%	19%	19%	23%	25%	22%	21%	13%

Note: Excludes patients who received no ESA in month.



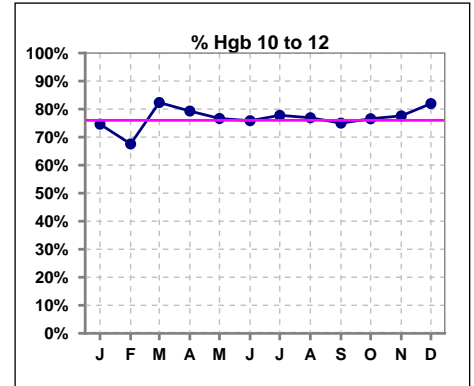
	Jan	Feb	Mar	Apr	May	Jun	Jul	Aug	Sep	Oct	Nov	Dec
# Hgb	67	74	68	58	60	58	54	52	56	64	58	61
# Hgb < 9	4	9	4	3	4	4	5	4	4	5	6	5
Pop. Mean	10.5	10.5	10.6	10.7	10.7	10.8	10.7	10.6	10.5	10.7	10.6	10.9
Std. Deviation	1.0	1.1	0.9	1.0	1.0	1.1	1.1	1.1	1.0	1.1	1.2	1.2
% Hgb < 9	6%	12%	6%	5%	7%	7%	9%	8%	7%	8%	10%	8%

Note: Excludes patients who received no ESA in month.



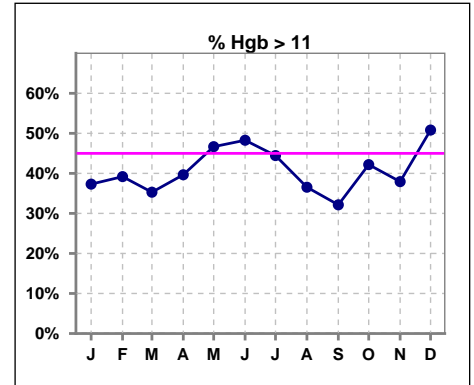
	Jan	Feb	Mar	Apr	May	Jun	Jul	Aug	Sep	Oct	Nov	Dec
# Hgb	67	74	68	58	60	58	54	52	56	64	58	61
# Hgb 10 to 12	50	50	56	46	46	44	42	40	42	49	45	50
Pop. Mean	10.5	10.5	10.6	10.7	10.7	10.8	10.7	10.6	10.5	10.7	10.6	10.9
Std. Deviation	1.0	1.1	0.9	1.0	1.0	1.1	1.1	1.1	1.0	1.1	1.2	1.2
% Hgb 10 to 12	75%	68%	82%	79%	77%	76%	78%	77%	75%	77%	78%	82%

Note: Excludes patients who received no ESA in month.



	Jan	Feb	Mar	Apr	May	Jun	Jul	Aug	Sep	Oct	Nov	Dec
# Hgb	67	74	68	58	60	58	54	52	56	64	58	61
# Hgb > 11	25	29	24	23	28	28	24	19	18	27	22	31
Pop. Mean	10.5	10.5	10.6	10.7	10.7	10.8	10.7	10.6	10.5	10.7	10.6	10.9
Std. Deviation	1.0	1.1	0.9	1.0	1.0	1.1	1.1	1.1	1.0	1.1	1.2	1.2
% Hgb > 11	37%	39%	35%	40%	47%	48%	44%	37%	32%	42%	38%	51%

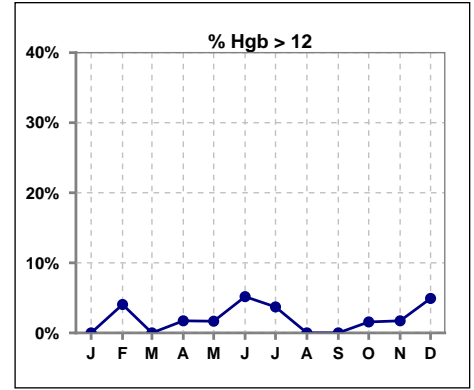
Note: Excludes patients who received no ESA in month.



**V. ANEMIA - CONT.**

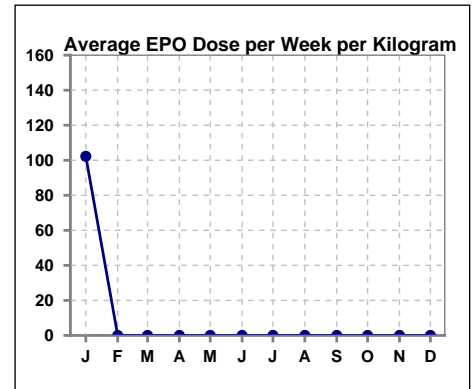
	Jan	Feb	Mar	Apr	May	Jun	Jul	Aug	Sep	Oct	Nov	Dec
# Hgb	67	74	68	58	60	58	54	52	56	64	58	61
# Hgb > 12	0	3	0	1	1	3	2	0	0	1	1	3
Pop. Mean	10.5	10.5	10.6	10.7	10.7	10.8	10.7	10.6	10.5	10.7	10.6	10.9
Std. Deviation	1.0	1.1	0.9	1.0	1.0	1.1	1.1	1.1	1.0	1.1	1.2	1.2
% Hgb > 12	0%	4%	0%	2%	2%	5%	4%	0%	0%	2%	2%	5%

Note: Excludes patients who received no ESA in month.



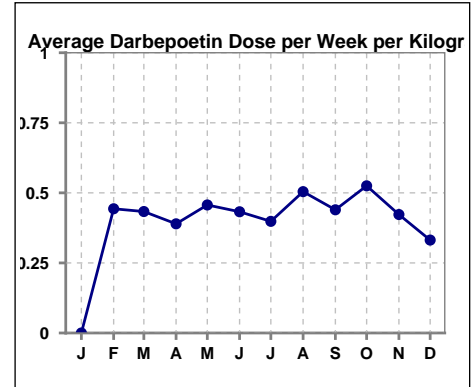
**Average EPO Dose per Week per Kilogram**

	Jan	Feb	Mar	Apr	May	Jun	Jul	Aug	Sep	Oct	Nov	Dec
# Average EPO	102.3	0	0	0	0	0	0	0	0	0	0	0



**Average Darbepoetin Dose per Week per Kilogram**

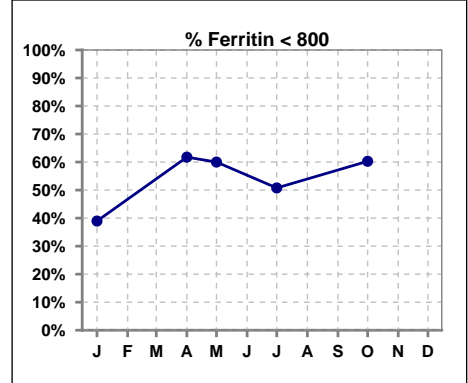
	Jan	Feb	Mar	Apr	May	Jun	Jul	Aug	Sep	Oct	Nov	Dec
# Average Darbepoetin	0	.4	.4	.4	.5	.4	.4	.5	.4	.5	.4	.3



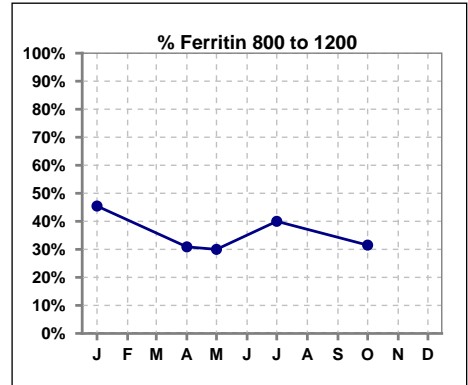
**V. ANEMIA - CONT.**

**Iron Profile**

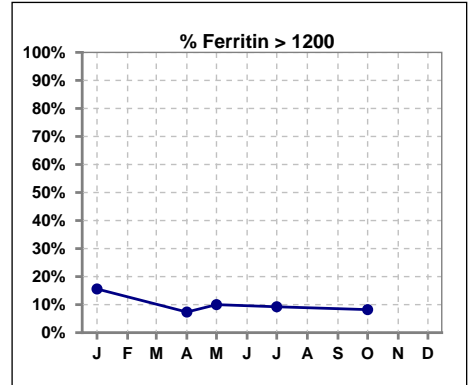
	Jan	Feb	Mar	Apr	May	Jun	Jul	Aug	Sep	Oct	Nov	Dec
# Ferritin	77			68	20		65			73		
# Ferritin < 800	30			42	12		33			44		
Pop. Mean	966			692	731		806			851		
Std. Deviation	790			296	379		360			826		
<b>% Ferritin &lt; 800</b>	<b>39%</b>			<b>62%</b>	<b>60%</b>		<b>51%</b>			<b>60%</b>		



	Jan	Feb	Mar	Apr	May	Jun	Jul	Aug	Sep	Oct	Nov	Dec
# Ferritin	77			68	20		65			73		
# Ferritin 800 to 1200	35			21	6		26			23		
Pop. Mean	966			692	731		806			851		
Std. Deviation	790			296	379		360			826		
<b>% Ferritin 800 to 1200</b>	<b>45%</b>			<b>31%</b>	<b>30%</b>		<b>40%</b>			<b>32%</b>		



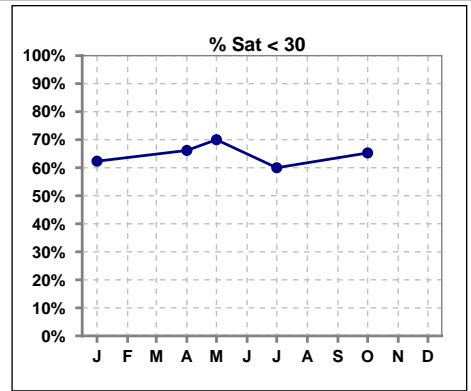
	Jan	Feb	Mar	Apr	May	Jun	Jul	Aug	Sep	Oct	Nov	Dec
# Ferritin	77			68	20		65			73		
# Ferritin > 1200	12			5	2		6			6		
Pop. Mean	966			692	731		806			851		
Std. Deviation	790			296	379		360			826		
<b>% Ferritin &gt; 1200</b>	<b>16%</b>			<b>7%</b>	<b>10%</b>		<b>9%</b>			<b>8%</b>		



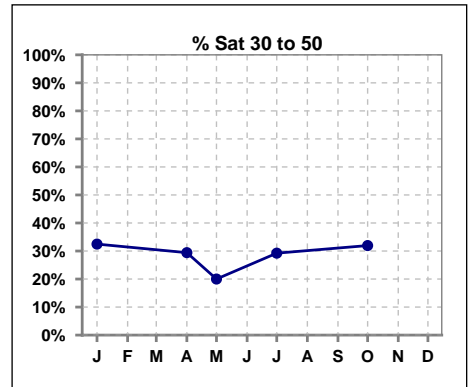
Methodology: a) All labs for 'Adequacy of Dialysis', 'Nutrition', 'Osteodystrophy', 'Anemia' and 'Diabetes' based on last value of month; b) BP's and #L processed are average of all values for month; c) Access data takes last access of month; d) Values for SGA and 'Infection Control' use most recent result.

**V. ANEMIA - CONT.**

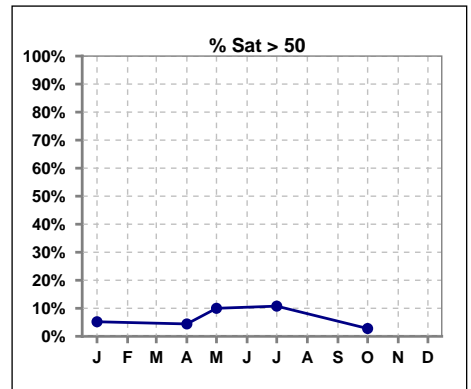
	Jan	Feb	Mar	Apr	May	Jun	Jul	Aug	Sep	Oct	Nov	Dec
# % Sat	77			68	20		65			72		
# % Sat < 30	48			45	14		39			47		
Pop. Mean	29			27	27		30			28		
Std. Deviation	14			11	13		12			12		
<b>% % Sat &lt; 30</b>	<b>62%</b>			<b>66%</b>	<b>70%</b>		<b>60%</b>			<b>65%</b>		



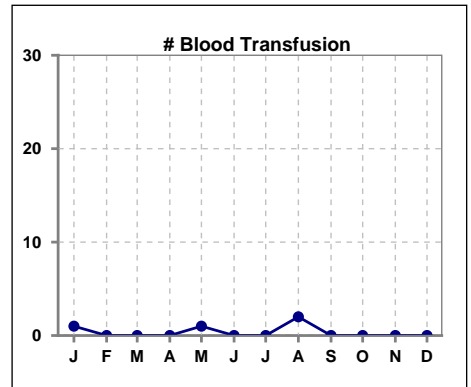
	Jan	Feb	Mar	Apr	May	Jun	Jul	Aug	Sep	Oct	Nov	Dec
# % Sat	77			68	20		65			72		
# % Sat 30 to 50	25			20	4		19			23		
Pop. Mean	29			27	27		30			28		
Std. Deviation	14			11	13		12			12		
<b>% % Sat 30 to 50</b>	<b>32%</b>			<b>29%</b>	<b>20%</b>		<b>29%</b>			<b>32%</b>		



	Jan	Feb	Mar	Apr	May	Jun	Jul	Aug	Sep	Oct	Nov	Dec
# % Sat	77			68	20		65			72		
# % Sat > 50	4			3	2		7			2		
Pop. Mean	29			27	27		30			28		
Std. Deviation	14			11	13		12			12		
<b>% % Sat &gt; 50</b>	<b>5%</b>			<b>4%</b>	<b>10%</b>		<b>11%</b>			<b>3%</b>		

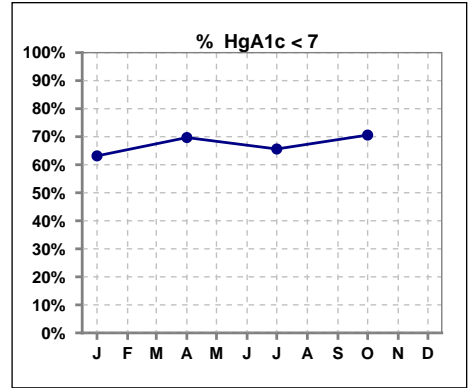


	Jan	Feb	Mar	Apr	May	Jun	Jul	Aug	Sep	Oct	Nov	Dec
# Patient	77	81	78	69	69	68	66	70	74	73	76	73
# Blood Transfusion	1	0	0	0	1	0	0	2	0	0	0	0



**VI. Diabetes**

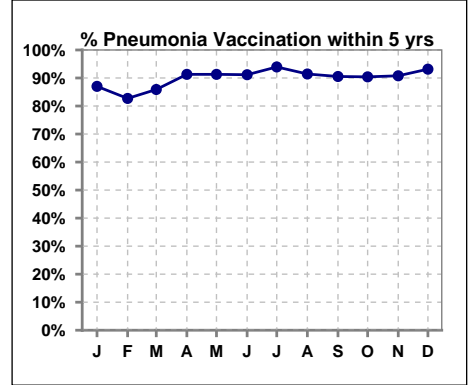
	Jan	Feb	Mar	Apr	May	Jun	Jul	Aug	Sep	Oct	Nov	Dec
# HgA1c	38			33			32			34		
# HgA1c < 7	24			23			21			24		
Pop. Mean	6.7			6.5			6.7			6.5		
Std. Deviation	1.23			1.13			1.40			0.95		
<b>% HgA1c &lt; 7</b>	<b>63%</b>			<b>70%</b>			<b>66%</b>			<b>71%</b>		



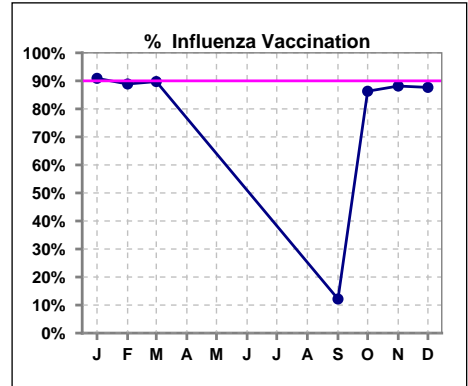
**VII. Infection Control**

**Pneumonia vaccination within the past five years**

	Jan	Feb	Mar	Apr	May	Jun	Jul	Aug	Sep	Oct	Nov	Dec
# Patient	77	81	78	69	69	68	66	70	74	73	76	73
# Pneumonia	67	67	67	63	63	62	62	64	67	66	69	68
% Pneumonia	87%	83%	86%	91%	91%	91%	94%	91%	91%	90%	91%	93%



	Jan	Feb	Mar	Apr	May	Jun	Jul	Aug	Sep	Oct	Nov	Dec
# Patient	77	81	78						74	73	76	73
# Influenza	70	72	70						9	63	67	64
% Influenza	91%	89%	90%						12%	86%	88%	88%

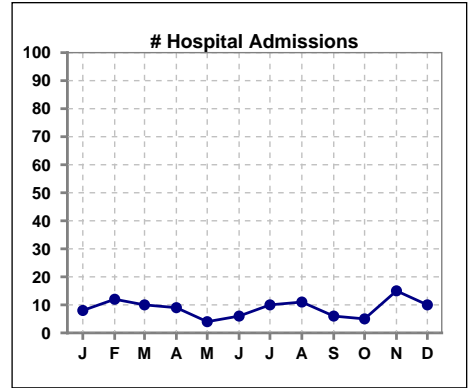


Methodology: a) All labs for 'Adequacy of Dialysis', 'Nutrition', 'Osteodystrophy', 'Anemia' and 'Diabetes' based on last value of month; b) BP's and #L processed are average of all values for month; c) Access data takes last access of month; d) Values for SGA and 'Infection Control' use most recent result.

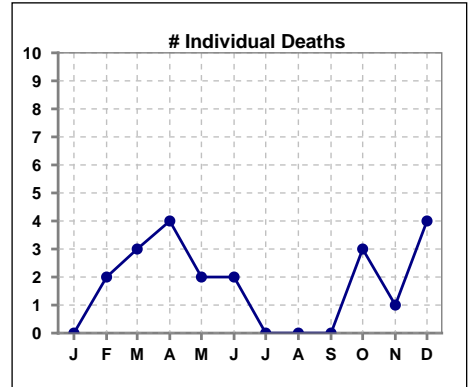


**VIII. Outcome measures**

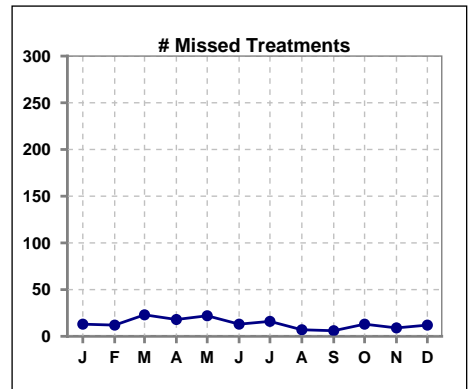
	Jan	Feb	Mar	Apr	May	Jun	Jul	Aug	Sep	Oct	Nov	Dec
# Patient	77	81	78	69	69	68	66	70	74	73	76	73
# Hospital Admissions	8	12	10	9	4	6	10	11	6	5	15	10



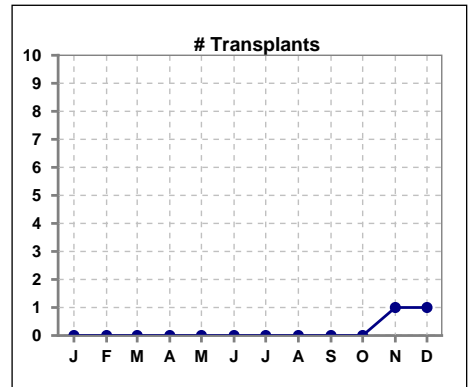
	Jan	Feb	Mar	Apr	May	Jun	Jul	Aug	Sep	Oct	Nov	Dec
# Patient	77	81	78	69	69	68	66	70	74	73	76	73
# Individual Deaths	0	2	3	4	2	2	0	0	0	3	1	4



	Jan	Feb	Mar	Apr	May	Jun	Jul	Aug	Sep	Oct	Nov	Dec
# Patient	77	81	78	69	69	68	66	70	74	73	76	73
# Missed Treatments	13	12	23	18	22	13	16	7	6	13	9	12



	Jan	Feb	Mar	Apr	May	Jun	Jul	Aug	Sep	Oct	Nov	Dec
# Patient	77	81	78	69	69	68	66	70	74	73	76	73
# Transplants	0	0	0	0	0	0	0	0	0	0	1	1



Methodology: a) All labs for 'Adequacy of Dialysis', 'Nutrition', 'Osteodystrophy', 'Anemia' and 'Diabetes' based on last value of month; b) BP's and #L processed are average of all values for month; c) Access data takes last access of month; d) Values for SGA and 'Infection Control' use most recent result.