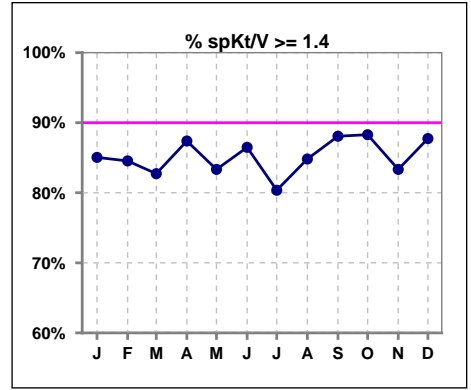
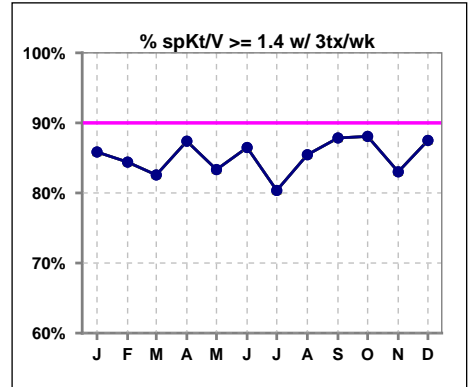


**I. ADEQUACY OF DIALYSIS**

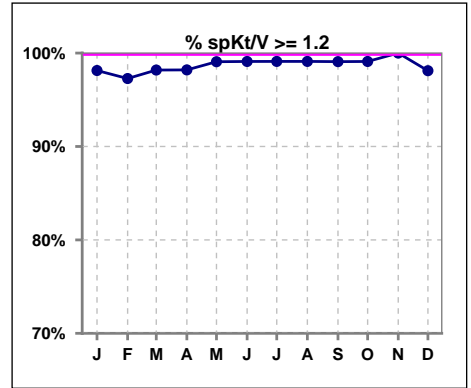
	Jan	Feb	Mar	Apr	May	Jun	Jul	Aug	Sep	Oct	Nov	Dec
# spKt/V	107	110	110	111	108	111	112	112	109	111	108	106
# spKt/V >= 1.4	91	93	91	97	90	96	90	95	96	98	90	93
Pop. Mean	1.64	1.65	1.68	1.69	1.67	1.69	1.69	1.65	1.70	1.69	1.71	1.73
Std. Deviation	0.25	0.28	0.32	0.34	0.29	0.30	0.34	0.29	0.29	0.30	0.30	0.29
% spKt/V >= 1.4	85%	85%	83%	87%	83%	86%	80%	85%	88%	88%	83%	88%



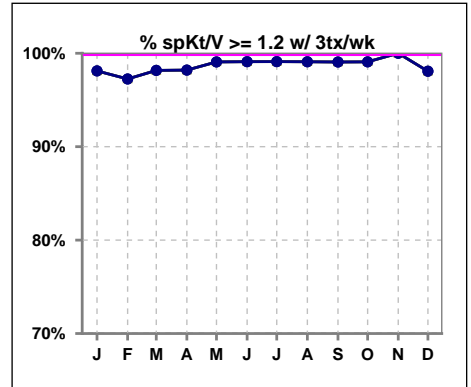
	Jan	Feb	Mar	Apr	May	Jun	Jul	Aug	Sep	Oct	Nov	Dec
# spKt/V w/ 3tx/wk	106	109	109	111	108	111	112	110	107	109	106	104
# spKt/V >= 1.4 w/3tx/wk	91	92	90	97	90	96	90	94	94	96	88	91
Pop. Mean	1.64	1.65	1.69	1.69	1.67	1.69	1.69	1.66	1.69	1.68	1.70	1.72
Std. Deviation	0.25	0.28	0.32	0.34	0.29	0.30	0.34	0.29	0.29	0.30	0.30	0.28
% >=1.4 w/3tx/wk	86%	84%	83%	87%	83%	86%	80%	85%	88%	88%	83%	88%



	Jan	Feb	Mar	Apr	May	Jun	Jul	Aug	Sep	Oct	Nov	Dec
# spKt/V	107	110	110	111	108	111	112	112	109	111	108	106
# spKt/V >= 1.2	105	107	108	109	107	110	111	111	108	110	108	104
Pop. Mean	1.64	1.65	1.68	1.69	1.67	1.69	1.69	1.65	1.70	1.69	1.71	1.73
Std. Deviation	0.25	0.28	0.32	0.34	0.29	0.30	0.34	0.29	0.29	0.30	0.30	0.29
% spKt/V >= 1.2	98%	97%	98%	98%	99%	99%	99%	99%	99%	99%	100%	98%



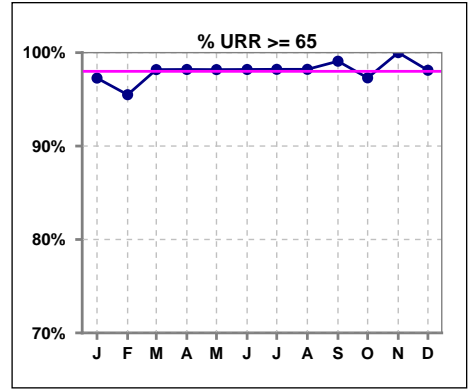
	Jan	Feb	Mar	Apr	May	Jun	Jul	Aug	Sep	Oct	Nov	Dec
# spKt/V w/ 3tx/wk	106	109	109	111	108	111	112	110	107	109	106	104
# spKt/V >= 1.2 w/3tx/wk	104	106	107	109	107	110	111	109	106	108	106	102
Pop. Mean	1.64	1.65	1.69	1.69	1.67	1.69	1.69	1.66	1.69	1.68	1.70	1.72
Std. Deviation	0.25	0.28	0.32	0.34	0.29	0.30	0.34	0.29	0.29	0.30	0.30	0.28
% >=1.2 w/3tx/wk	98%	97%	98%	98%	99%	99%	99%	99%	99%	99%	100%	98%



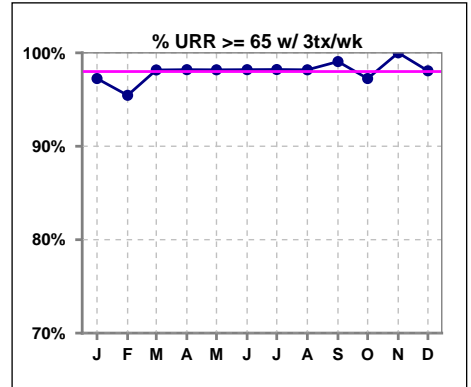
Methodology: a) All labs for 'Adequacy of Dialysis', 'Nutrition', 'Osteodystrophy', 'Anemia' and 'Diabetes' based on last value of month; b) BP's and #L processed are average of all values for month; c) Access data takes last access of month; d) Values for SGA and 'Infection Control' use most recent result.

**I. ADEQUACY OF DIALYSIS - CONT.**

	Jan	Feb	Mar	Apr	May	Jun	Jul	Aug	Sep	Oct	Nov	Dec
# URR	110	111	110	111	110	111	112	112	109	111	108	106
# URR >= 65	107	106	108	109	108	109	110	110	108	108	108	104
Pop. Mean	75	76	76	76	76	76	76	76	77	76	76	77
Std. Deviation	7.28	5.75	6.30	5.90	5.71	5.89	5.78	5.19	5.26	5.63	5.14	5.33
% URR >= 65	97%	95%	98%	98%	98%	98%	98%	98%	99%	97%	100%	98%



	Jan	Feb	Mar	Apr	May	Jun	Jul	Aug	Sep	Oct	Nov	Dec
# URR w/ 3tx/wk	109	110	109	111	110	111	112	110	107	109	106	104
# URR>=65 w/ 3tx/wk	106	105	107	109	108	109	110	108	106	106	106	102
Pop. Mean	75	76	76	76	76	76	76	76	77	76	76	77
Std. Deviation	7.29	5.78	6.32	5.90	5.71	5.89	5.78	5.18	5.22	5.54	5.17	5.30
% URR>=65 w/ 3tx/wk	97%	95%	98%	98%	98%	98%	98%	98%	99%	97%	100%	98%

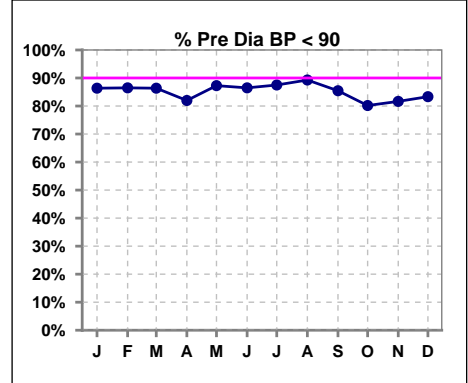


Methodology: a) All labs for 'Adequacy of Dialysis', 'Nutrition', 'Osteodystrophy', 'Anemia' and 'Diabetes' based on last value of month; b) BP's and #L processed are average of all values for month; c) Access data takes last access of month; d) Values for SGA and 'Infection Control' use most recent result.

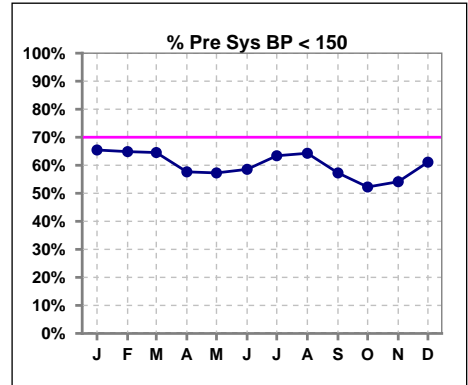
**I. ADEQUACY OF DIALYSIS - CONT.**

**Blood Pressure Control (Pre)**

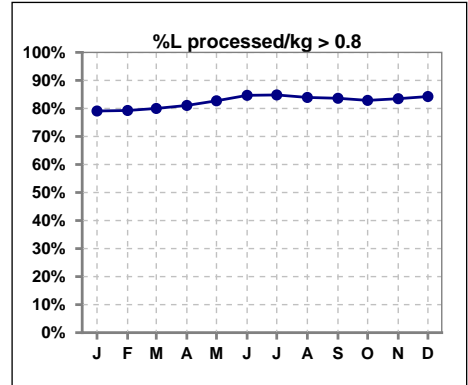
	Jan	Feb	Mar	Apr	May	Jun	Jul	Aug	Sep	Oct	Nov	Dec
# Pre Dia BP	110	111	110	111	110	111	112	112	110	111	109	108
# Pre Dia BP < 90	95	96	95	91	96	96	98	100	94	89	89	90
Pop. Mean	78	78	78	78	78	78	77	78	79	81	80	80
Std. Deviation	11.7	12.3	11.0	11.1	10.5	10.1	10.5	9.3	10.4	11.5	11.1	11.3
<b>% Pre Dia BP &lt; 90</b>	<b>86%</b>	<b>86%</b>	<b>86%</b>	<b>82%</b>	<b>87%</b>	<b>86%</b>	<b>88%</b>	<b>89%</b>	<b>85%</b>	<b>80%</b>	<b>82%</b>	<b>83%</b>



	Jan	Feb	Mar	Apr	May	Jun	Jul	Aug	Sep	Oct	Nov	Dec
# Pre Sys BP	110	111	110	111	110	111	112	112	110	111	109	108
# Pre Sys BP < 150	72	72	71	64	63	65	71	72	63	58	59	66
Pop. Mean	144	144	143	145	144	144	143	143	146	148	148	147
Std. Deviation	19.3	20.1	18.8	19.2	19.7	19.9	19.6	18.5	18.7	19.6	19.9	19.9
<b>%Pre Sys BP &lt;150</b>	<b>65%</b>	<b>65%</b>	<b>65%</b>	<b>58%</b>	<b>57%</b>	<b>59%</b>	<b>63%</b>	<b>64%</b>	<b>57%</b>	<b>52%</b>	<b>54%</b>	<b>61%</b>



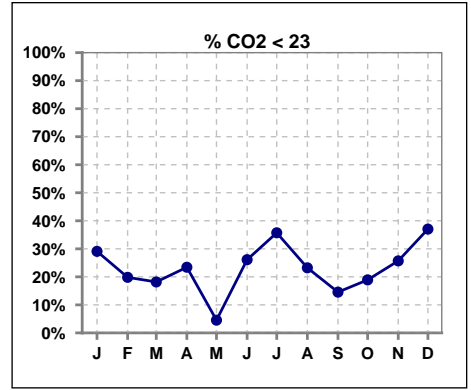
	Jan	Feb	Mar	Apr	May	Jun	Jul	Aug	Sep	Oct	Nov	Dec
# L processed/kg	110	111	110	111	110	111	112	112	110	111	109	108
# L processed/kg>0.8	87	88	88	90	91	94	95	94	92	92	91	91
Pop. Mean	1	1	1	1	1	1	1	1	1	1	1	1
Std. Deviation	0.3	0.3	0.3	0.3	0.3	0.3	0.3	0.2	0.3	0.3	0.3	0.3
<b>% L processed/kg&gt;0.8</b>	<b>79%</b>	<b>79%</b>	<b>80%</b>	<b>81%</b>	<b>83%</b>	<b>85%</b>	<b>85%</b>	<b>84%</b>	<b>84%</b>	<b>83%</b>	<b>83%</b>	<b>84%</b>



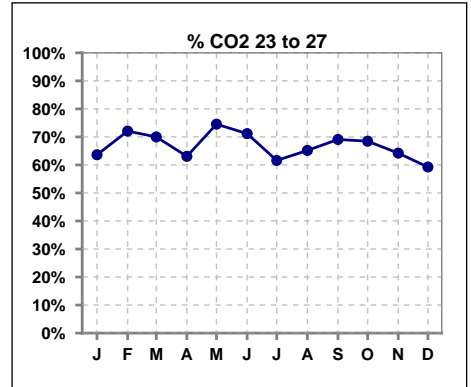
Methodology: a) All labs for 'Adequacy of Dialysis', 'Nutrition', 'Osteodystrophy', 'Anemia' and 'Diabetes' based on last value of month; b) BP's and #L processed are average of all values for month; c) Access data takes last access of month; d) Values for SGA and 'Infection Control' use most recent result.

**I. ADEQUACY OF DIALYSIS - CONT.**

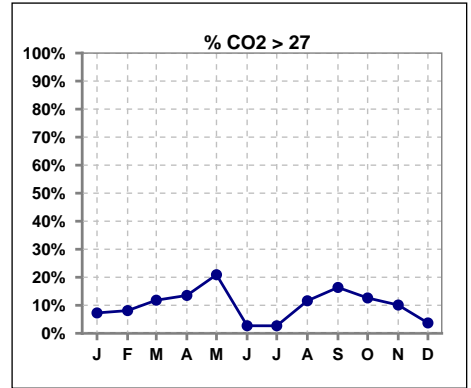
	Jan	Feb	Mar	Apr	May	Jun	Jul	Aug	Sep	Oct	Nov	Dec
# CO2	110	111	110	111	110	111	112	112	110	111	109	108
# CO2 < 23	32	22	20	26	5	29	40	26	16	21	28	40
Pop. Mean	24	24	25	24	26	24	23	24	25	24	24	23
Std. Deviation	2.53	2.57	2.60	2.57	2.37	2.25	2.40	2.66	2.55	2.38	3.04	2.52
<b>% CO2 &lt; 23</b>	<b>29%</b>	<b>20%</b>	<b>18%</b>	<b>23%</b>	<b>5%</b>	<b>26%</b>	<b>36%</b>	<b>23%</b>	<b>15%</b>	<b>19%</b>	<b>26%</b>	<b>37%</b>



	Jan	Feb	Mar	Apr	May	Jun	Jul	Aug	Sep	Oct	Nov	Dec
# CO2	110	111	110	111	110	111	112	112	110	111	109	108
# CO2 23 to 27	70	80	77	70	82	79	69	73	76	76	70	64
Pop. Mean	24	24	25	24	26	24	23	24	25	24	24	23
Std. Deviation	2.53	2.57	2.60	2.57	2.37	2.25	2.40	2.66	2.55	2.38	3.04	2.52
<b>% CO2 23 to 27</b>	<b>64%</b>	<b>72%</b>	<b>70%</b>	<b>63%</b>	<b>75%</b>	<b>71%</b>	<b>62%</b>	<b>65%</b>	<b>69%</b>	<b>68%</b>	<b>64%</b>	<b>59%</b>



	Jan	Feb	Mar	Apr	May	Jun	Jul	Aug	Sep	Oct	Nov	Dec
# CO2	110	111	110	111	110	111	112	112	110	111	109	108
# CO2 > 27	8	9	13	15	23	3	3	13	18	14	11	4
Pop. Mean	24	24	25	24	26	24	23	24	25	24	24	23
Std. Deviation	2.53	2.57	2.60	2.57	2.37	2.25	2.40	2.66	2.55	2.38	3.04	2.52
<b>% CO2 &gt; 27</b>	<b>7%</b>	<b>8%</b>	<b>12%</b>	<b>14%</b>	<b>21%</b>	<b>3%</b>	<b>3%</b>	<b>12%</b>	<b>16%</b>	<b>13%</b>	<b>10%</b>	<b>4%</b>

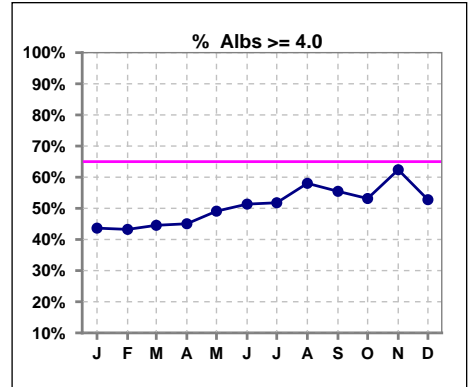


Methodology: a) All labs for 'Adequacy of Dialysis', 'Nutrition', 'Osteodystrophy', 'Anemia' and 'Diabetes' based on last value of month; b) BP's and #L processed are average of all values for month; c) Access data takes last access of month; d) Values for SGA and 'Infection Control' use most recent result.

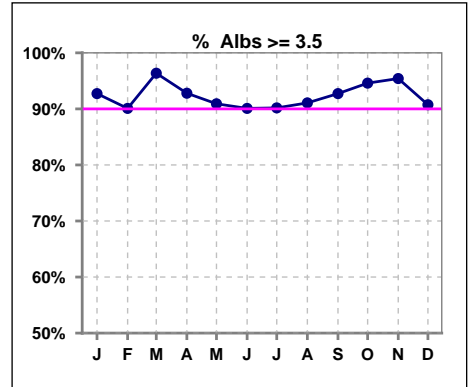
\*Albumin values use BCG method - as of July 2001

**II. NUTRITION**

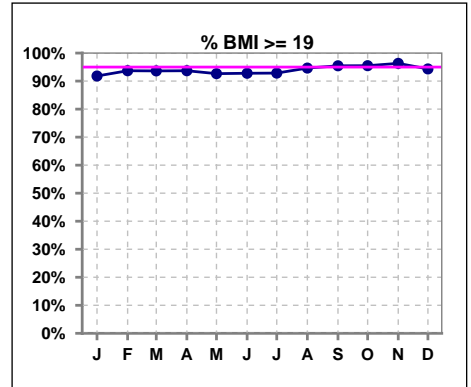
	Jan	Feb	Mar	Apr	May	Jun	Jul	Aug	Sep	Oct	Nov	Dec
# Albumin	110	111	110	111	110	111	112	112	110	111	109	108
# Albumin >= 4.0	48	48	49	50	54	57	58	65	61	59	68	57
Pop. Mean	3.9	3.9	3.9	3.9	3.9	3.9	3.9	4.0	4.0	4.0	4.0	4.0
Std. Deviation	0.31	0.32	0.33	0.30	0.33	0.34	0.34	0.33	0.33	0.33	0.37	0.36
% Alb >= 4.0	44%	43%	45%	45%	49%	51%	52%	58%	55%	53%	62%	53%



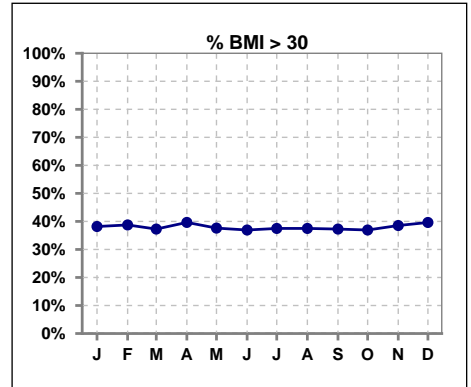
	Jan	Feb	Mar	Apr	May	Jun	Jul	Aug	Sep	Oct	Nov	Dec
# Albumin	110	111	110	111	110	111	112	112	110	111	109	108
# Albumin >= 3.5	102	100	106	103	100	100	101	102	102	105	104	98
Pop. Mean	3.9	3.9	3.9	3.9	3.9	3.9	3.9	4.0	4.0	4.0	4.0	4.0
Std. Deviation	0.31	0.32	0.33	0.30	0.33	0.34	0.34	0.33	0.33	0.33	0.37	0.36
% Alb >= 3.5	93%	90%	96%	93%	91%	90%	90%	91%	93%	95%	95%	91%



	Jan	Feb	Mar	Apr	May	Jun	Jul	Aug	Sep	Oct	Nov	Dec
# BMI	110	111	110	111	109	111	112	112	110	111	109	106
# BMI >= 19	101	104	103	104	101	103	104	106	105	106	105	100
Pop. Mean	29	29	29	29	29	29	29	29	29	29	29	29
Std. Deviation	7.5	7.6	7.6	7.6	7.5	7.7	7.8	7.3	7.6	7.6	7.6	7.7
% BMI >= 19	92%	94%	94%	94%	93%	93%	93%	95%	95%	95%	96%	94%



	Jan	Feb	Mar	Apr	May	Jun	Jul	Aug	Sep	Oct	Nov	Dec
# BMI	110	111	110	111	109	111	112	112	110	111	109	106
# BMI > 30	42	43	41	44	41	41	42	42	41	41	42	42
Pop. Mean	29	29	29	29	29	29	29	29	29	29	29	29
Std. Deviation	7.5	7.6	7.6	7.6	7.5	7.7	7.8	7.3	7.6	7.6	7.6	7.7
% BMI > 30	38%	39%	37%	40%	38%	37%	38%	38%	37%	37%	39%	40%

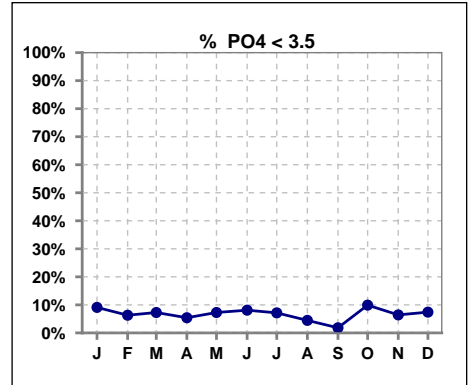


Methodology: a) All labs for 'Adequacy of Dialysis', 'Nutrition', 'Osteodystrophy', 'Anemia' and 'Diabetes' based on last value of month; b) BP's and #L processed are average of all values for month; c) Access data takes last access of month; d) Values for SGA and 'Infection Control' use most recent result.

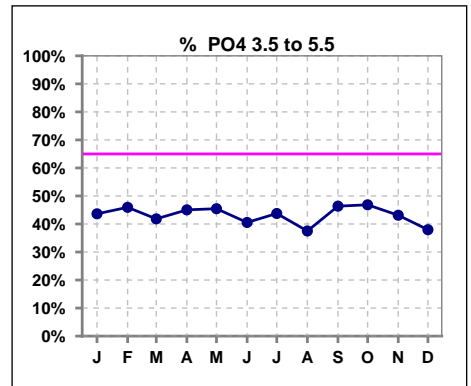
Lab methodology for PTH changed January 2012

**III. OSTEODYSTROPHY**

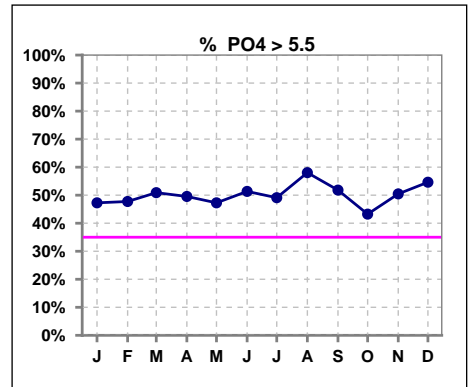
	Jan	Feb	Mar	Apr	May	Jun	Jul	Aug	Sep	Oct	Nov	Dec
# PO4	110	111	110	111	110	111	112	112	110	111	109	108
# PO4 < 3.5	10	7	8	6	8	9	8	5	2	11	7	8
Pop. Mean	5.7	5.7	5.9	5.9	5.8	5.9	5.7	6.0	5.8	5.8	5.8	6.0
Std. Deviation	1.85	1.74	1.92	1.94	1.83	2.00	1.77	1.89	1.77	2.04	1.70	1.85
% PO4 < 3.5	9%	6%	7%	5%	7%	8%	7%	4%	2%	10%	6%	7%



	Jan	Feb	Mar	Apr	May	Jun	Jul	Aug	Sep	Oct	Nov	Dec
# PO4	110	111	110	111	110	111	112	112	110	111	109	108
# PO4 3.5 to 5.5	48	51	46	50	50	45	49	42	51	52	47	41
Pop. Mean	5.7	5.7	5.9	5.9	5.8	5.9	5.7	6.0	5.8	5.8	5.8	6.0
Std. Deviation	1.85	1.74	1.92	1.94	1.83	2.00	1.77	1.89	1.77	2.04	1.70	1.85
% PO4 3.5 to 5.5	44%	46%	42%	45%	45%	41%	44%	38%	46%	47%	43%	38%



	Jan	Feb	Mar	Apr	May	Jun	Jul	Aug	Sep	Oct	Nov	Dec
# PO4	110	111	110	111	110	111	112	112	110	111	109	108
# PO4 > 5.5	52	53	56	55	52	57	55	65	57	48	55	59
Pop. Mean	5.7	5.7	5.9	5.9	5.8	5.9	5.7	6.0	5.8	5.8	5.8	6.0
Std. Deviation	1.85	1.74	1.92	1.94	1.83	2.00	1.77	1.89	1.77	2.04	1.70	1.85
% PO4 > 5.5	47%	48%	51%	50%	47%	51%	49%	58%	52%	43%	50%	55%

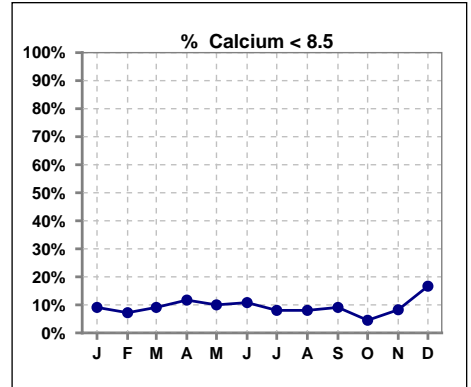


Methodology: a) All labs for 'Adequacy of Dialysis', 'Nutrition', 'Osteodystrophy', 'Anemia' and 'Diabetes' based on last value of month; b) BP's and #L processed are average of all values for month; c) Access data takes last access of month; d) Values for SGA and 'Infection Control' use most recent result.

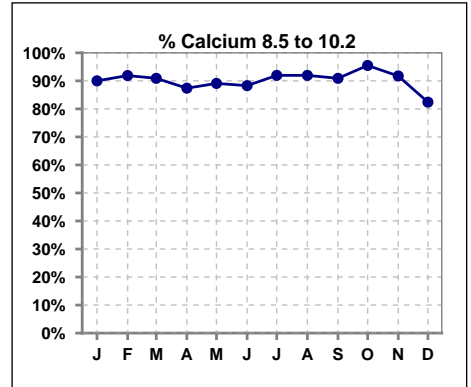
Lab methodology for PTH changed January 2012

**III. OSTEODYSTROPHY - CONT.**

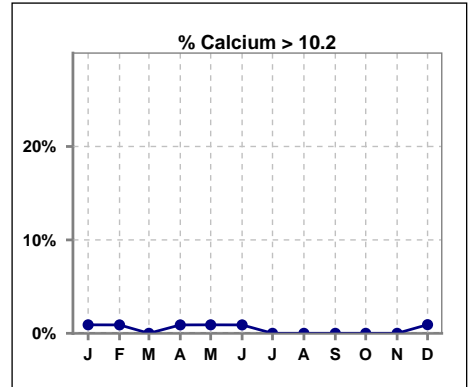
	Jan	Feb	Mar	Apr	May	Jun	Jul	Aug	Sep	Oct	Nov	Dec
# Calcium	110	111	110	111	110	111	112	112	110	111	109	108
# Calcium < 8.5	10	8	10	13	11	12	9	9	10	5	9	18
Pop. Mean	9.3	9.2	9.2	9.2	9.3	9.2	9.3	9.3	9.3	9.3	9.3	9.1
Std. Deviation	0.59	0.57	0.55	0.66	0.59	0.66	0.58	0.59	0.53	0.48	0.56	0.60
% Calcium < 8.5	9%	7%	9%	12%	10%	11%	8%	8%	9%	5%	8%	17%



	Jan	Feb	Mar	Apr	May	Jun	Jul	Aug	Sep	Oct	Nov	Dec
# Calcium	110	111	110	111	110	111	112	112	110	111	109	108
# Calcium 8.5 to 10.2	99	102	100	97	98	98	103	103	100	106	100	89
Pop. Mean	9.3	9.2	9.2	9.2	9.3	9.2	9.3	9.3	9.3	9.3	9.3	9.1
Std. Deviation	0.59	0.57	0.55	0.66	0.59	0.66	0.58	0.59	0.53	0.48	0.56	0.60
% Calcium 8.5 to 10.2	90%	92%	91%	87%	89%	88%	92%	92%	91%	95%	92%	82%



	Jan	Feb	Mar	Apr	May	Jun	Jul	Aug	Sep	Oct	Nov	Dec
# Calcium	110	111	110	111	110	111	112	112	110	111	109	108
# Calcium > 10.2	1	1	0	1	1	1	0	0	0	0	0	1
Pop. Mean	9.3	9.2	9.2	9.2	9.3	9.2	9.3	9.3	9.3	9.3	9.3	9.1
Std. Deviation	0.59	0.57	0.55	0.66	0.59	0.66	0.58	0.59	0.53	0.48	0.56	0.60
% Calcium > 10.2	1%	1%	0%	1%	1%	1%	0%	0%	0%	0%	0%	1%

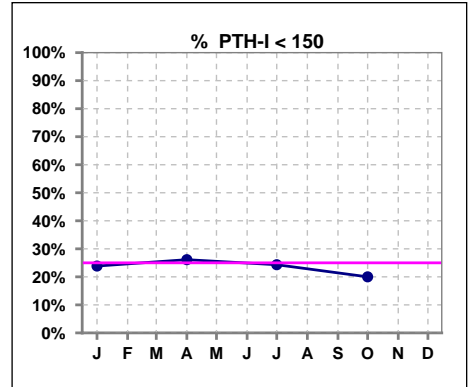


Methodology: a) All labs for 'Adequacy of Dialysis', 'Nutrition', 'Osteodystrophy', 'Anemia' and 'Diabetes' based on last value of month; b) BP's and #L processed are average of all values for month; c) Access data takes last access of month; d) Values for SGA and 'Infection Control' use most recent result.

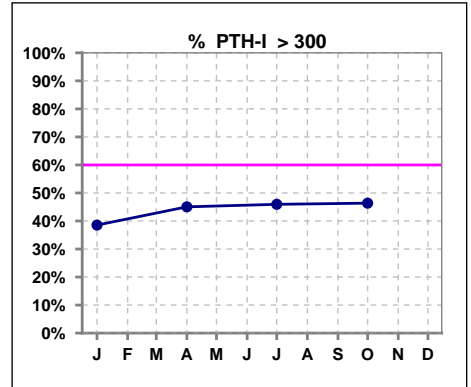
Lab methodology for PTH changed January 2012

**III. OSTEODYSTROPHY - CONT.**

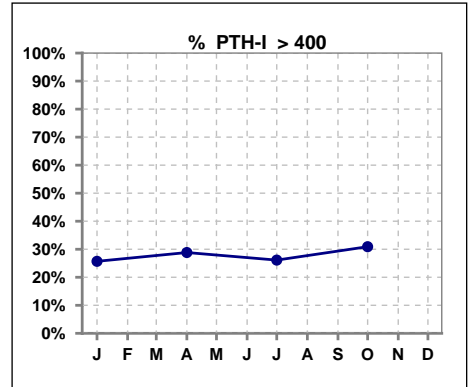
	Jan	Feb	Mar	Apr	May	Jun	Jul	Aug	Sep	Oct	Nov	Dec
# PTH-I	109			111			111			110		
# PTH-I < 150	26			29			27			22		
Pop. Mean	363			357			363			389		
Std. Deviation	392			376			415			435		
% PTH-I < 150	24%			26%			24%			20%		



	Jan	Feb	Mar	Apr	May	Jun	Jul	Aug	Sep	Oct	Nov	Dec
# PTH-I	109			111			111			110		
# PTH-I > 300	42			50			51			51		
Pop. Mean	363			357			363			389		
Std. Deviation	392			376			415			435		
% PTH-I > 300	39%			45%			46%			46%		



	Jan	Feb	Mar	Apr	May	Jun	Jul	Aug	Sep	Oct	Nov	Dec
# PTH-I	109			111			111			110		
# PTH-I > 400	28			32			29			34		
Pop. Mean	363			357			363			389		
Std. Deviation	392			376			415			435		
% PTH-I > 400	26%			29%			26%			31%		

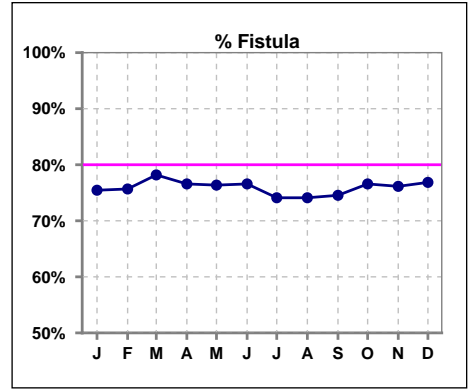


Methodology: a) All labs for 'Adequacy of Dialysis', 'Nutrition', 'Osteodystrophy', 'Anemia' and 'Diabetes' based on last value of month; b) BP's and #L processed are average of all values for month; c) Access data takes last access of month; d) Values for SGA and 'Infection Control' use most recent result.

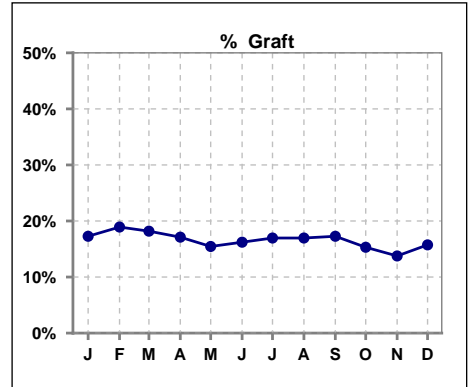


**IV. ACCESS**

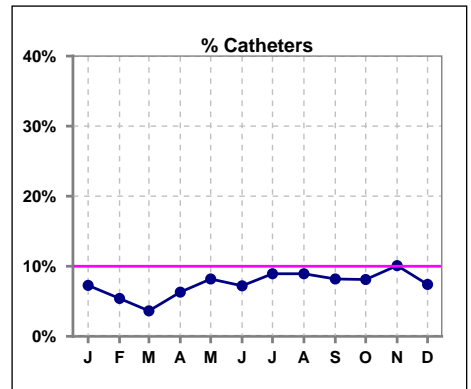
	Jan	Feb	Mar	Apr	May	Jun	Jul	Aug	Sep	Oct	Nov	Dec
<b># Access</b>	110	111	110	111	110	111	112	112	110	111	109	108
<b># Fistula</b>	83	84	86	85	84	85	83	83	82	85	83	83
<b>% Fistula</b>	75%	76%	78%	77%	76%	77%	74%	74%	75%	77%	76%	77%



	Jan	Feb	Mar	Apr	May	Jun	Jul	Aug	Sep	Oct	Nov	Dec
<b># Access</b>	110	111	110	111	110	111	112	112	110	111	109	108
<b># Graft</b>	19	21	20	19	17	18	19	19	19	17	15	17
<b>% Graft</b>	17%	19%	18%	17%	15%	16%	17%	17%	17%	15%	14%	16%



	Jan	Feb	Mar	Apr	May	Jun	Jul	Aug	Sep	Oct	Nov	Dec
<b># Access</b>	110	111	110	111	110	111	112	112	110	111	109	108
<b># Catheters</b>	8	6	4	7	9	8	10	10	9	9	11	8
<b>% Catheters</b>	7%	5%	4%	6%	8%	7%	9%	9%	8%	8%	10%	7%



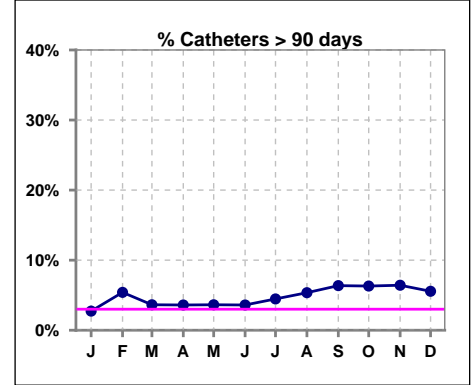
Methodology: a) All labs for 'Adequacy of Dialysis', 'Nutrition', 'Osteodystrophy', 'Anemia' and 'Diabetes' based on last value of month; b) BP's and #L processed are average of all values for month; c) Access data takes last access of month; d) Values for SGA and 'Infection Control' use most recent result.

**IV. ACCESS - CONT.**

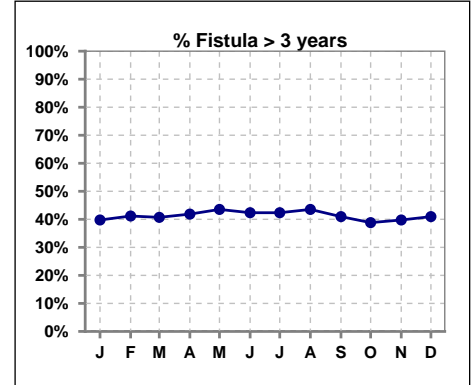
**Catheters > 90 days**

	Jan	Feb	Mar	Apr	May	Jun	Jul	Aug	Sep	Oct	Nov	Dec
# Access	110	111	110	111	110	111	112	112	110	111	109	108
# Catheters	3	6	4	4	4	4	5	6	7	7	7	6
<b>% Catheters</b>	<b>3%</b>	<b>5%</b>	<b>4%</b>	<b>4%</b>	<b>4%</b>	<b>4%</b>	<b>4%</b>	<b>5%</b>	<b>6%</b>	<b>6%</b>	<b>6%</b>	<b>6%</b>

Definition: Catheter in use on last treatment of the month



	Jan	Feb	Mar	Apr	May	Jun	Jul	Aug	Sep	Oct	Nov	Dec
# Fistula	83	85	86	86	85	85	85	85	83	85	83	83
# Fistula > 3 yrs	33	35	35	36	37	36	36	37	34	33	33	34
<b>% Fistula &gt; 3 yrs</b>	<b>40%</b>	<b>41%</b>	<b>41%</b>	<b>42%</b>	<b>44%</b>	<b>42%</b>	<b>42%</b>	<b>44%</b>	<b>41%</b>	<b>39%</b>	<b>40%</b>	<b>41%</b>

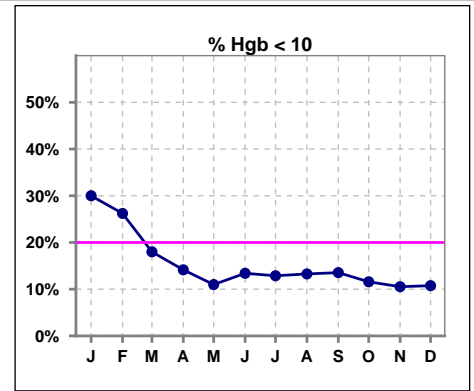


Methodology: a) All labs for 'Adequacy of Dialysis', 'Nutrition', 'Osteodystrophy', 'Anemia' and 'Diabetes' based on last value of month; b) BP's and #L processed are average of all values for month; c) Access data takes last access of month; d) Values for SGA and 'Infection Control' use most recent result.

**V. ANEMIA**

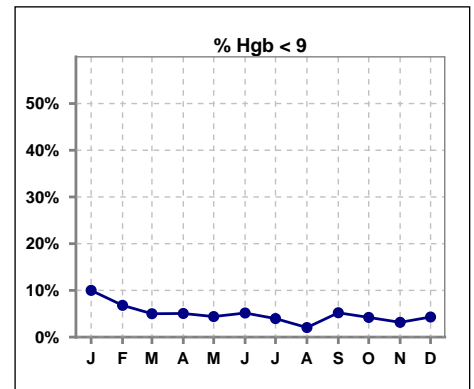
	Jan	Feb	Mar	Apr	May	Jun	Jul	Aug	Sep	Oct	Nov	Dec
# Hgb	100	103	100	99	91	97	101	98	96	95	95	93
# Hgb < 10	30	27	18	14	10	13	13	13	13	11	10	10
Pop. Mean	10.4	10.7	10.7	10.9	11.0	10.9	10.9	10.9	10.9	10.9	11.0	10.9
Std. Deviation	1.1	1.2	1.0	1.1	1.0	1.0	0.9	0.9	0.9	0.9	0.9	0.8
<b>% Hgb &lt; 10</b>	<b>30%</b>	<b>26%</b>	<b>18%</b>	<b>14%</b>	<b>11%</b>	<b>13%</b>	<b>13%</b>	<b>13%</b>	<b>14%</b>	<b>12%</b>	<b>11%</b>	<b>11%</b>

Note: Excludes patients who received no ESA in month.



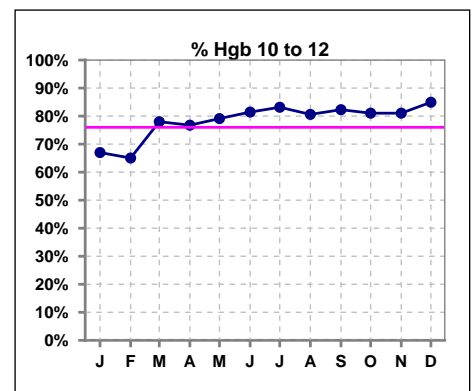
	Jan	Feb	Mar	Apr	May	Jun	Jul	Aug	Sep	Oct	Nov	Dec
# Hgb	100	103	100	99	91	97	101	98	96	95	95	93
# Hgb < 9	10	7	5	5	4	5	4	2	5	4	3	4
Pop. Mean	10.4	10.7	10.7	10.9	11.0	10.9	10.9	10.9	10.9	10.9	11.0	10.9
Std. Deviation	1.1	1.2	1.0	1.1	1.0	1.0	0.9	0.9	0.9	0.9	0.9	0.8
<b>% Hgb &lt; 9</b>	<b>10%</b>	<b>7%</b>	<b>5%</b>	<b>5%</b>	<b>4%</b>	<b>5%</b>	<b>4%</b>	<b>2%</b>	<b>5%</b>	<b>4%</b>	<b>3%</b>	<b>4%</b>

Note: Excludes patients who received no ESA in month.



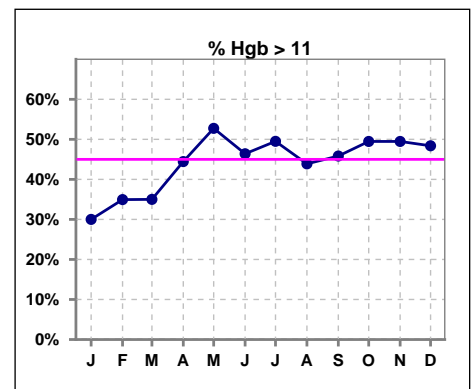
	Jan	Feb	Mar	Apr	May	Jun	Jul	Aug	Sep	Oct	Nov	Dec
# Hgb	100	103	100	99	91	97	101	98	96	95	95	93
# Hgb 10 to 12	67	67	78	76	72	79	84	79	79	77	77	79
Pop. Mean	10.4	10.7	10.7	10.9	11.0	10.9	10.9	10.9	10.9	10.9	11.0	10.9
Std. Deviation	1.1	1.2	1.0	1.1	1.0	1.0	0.9	0.9	0.9	0.9	0.9	0.8
<b>% Hgb 10 to 12</b>	<b>67%</b>	<b>65%</b>	<b>78%</b>	<b>77%</b>	<b>79%</b>	<b>81%</b>	<b>83%</b>	<b>81%</b>	<b>82%</b>	<b>81%</b>	<b>81%</b>	<b>85%</b>

Note: Excludes patients who received no ESA in month.



	Jan	Feb	Mar	Apr	May	Jun	Jul	Aug	Sep	Oct	Nov	Dec
# Hgb	100	103	100	99	91	97	101	98	96	95	95	93
# Hgb > 11	30	36	35	44	48	45	50	43	44	47	47	45
Pop. Mean	10.4	10.7	10.7	10.9	11.0	10.9	10.9	10.9	10.9	10.9	11.0	10.9
Std. Deviation	1.1	1.2	1.0	1.1	1.0	1.0	0.9	0.9	0.9	0.9	0.9	0.8
<b>% Hgb &gt; 11</b>	<b>30%</b>	<b>35%</b>	<b>35%</b>	<b>44%</b>	<b>53%</b>	<b>46%</b>	<b>50%</b>	<b>44%</b>	<b>46%</b>	<b>49%</b>	<b>49%</b>	<b>48%</b>

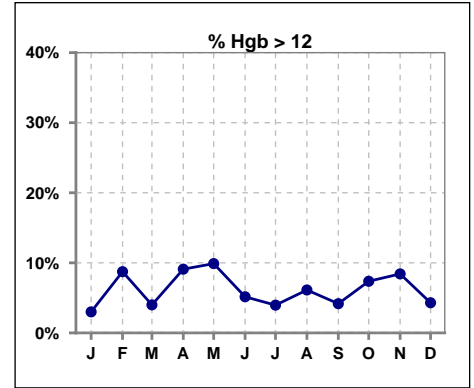
Note: Excludes patients who received no ESA in month.



**V. ANEMIA - CONT.**

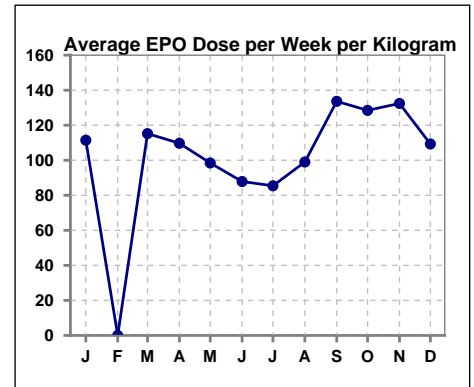
	Jan	Feb	Mar	Apr	May	Jun	Jul	Aug	Sep	Oct	Nov	Dec
# Hgb	100	103	100	99	91	97	101	98	96	95	95	93
# Hgb > 12	3	9	4	9	9	5	4	6	4	7	8	4
Pop. Mean	10.4	10.7	10.7	10.9	11.0	10.9	10.9	10.9	10.9	10.9	11.0	10.9
Std. Deviation	1.1	1.2	1.0	1.1	1.0	1.0	0.9	0.9	0.9	0.9	0.9	0.8
% Hgb > 12	3%	9%	4%	9%	10%	5%	4%	6%	4%	7%	8%	4%

Note: Excludes patients who received no ESA in month.



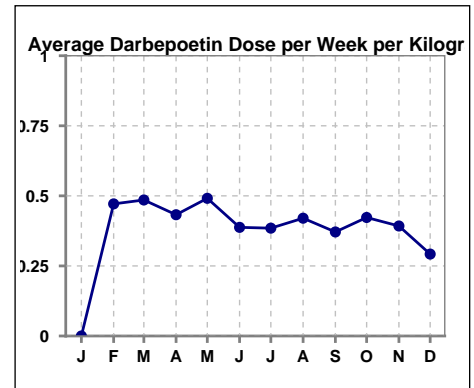
**Average EPO Dose per Week per Kilogram**

	Jan	Feb	Mar	Apr	May	Jun	Jul	Aug	Sep	Oct	Nov	Dec
# Average EPO	111.5	0	115.2	109.7	98.5	87.9	85.4	99.0	133.7	128.5	132.4	109.3



**Average Darbeopetin Dose per Week per Kilogram**

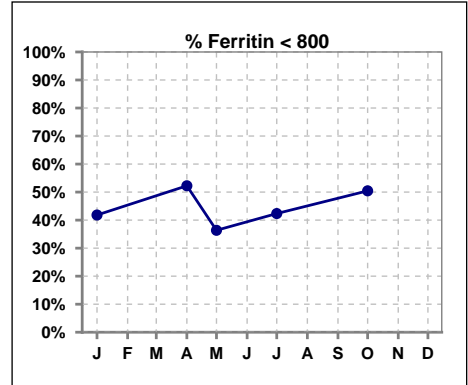
	Jan	Feb	Mar	Apr	May	Jun	Jul	Aug	Sep	Oct	Nov	Dec
# Average Darbeopetin	0	.5	.5	.4	.5	.4	.4	.4	.4	.4	.4	.3



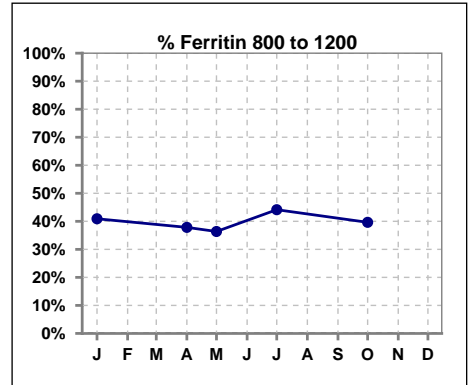
**V. ANEMIA - CONT.**

**Iron Profile**

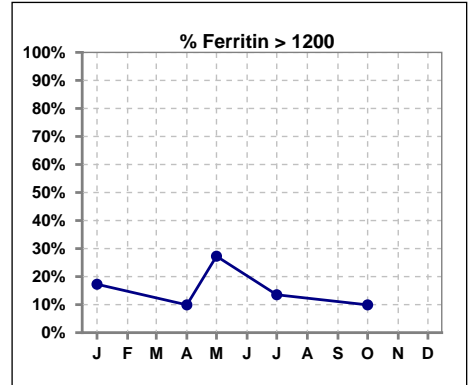
	Jan	Feb	Mar	Apr	May	Jun	Jul	Aug	Sep	Oct	Nov	Dec
# Ferritin	110			111	33		111			111		
# Ferritin < 800	46			58	12		47			56		
Pop. Mean	894			839	1035		882			850		
Std. Deviation	342			384	452		297			305		
<b>% Ferritin &lt; 800</b>	<b>42%</b>			<b>52%</b>	<b>36%</b>		<b>42%</b>			<b>50%</b>		



	Jan	Feb	Mar	Apr	May	Jun	Jul	Aug	Sep	Oct	Nov	Dec
# Ferritin	110			111	33		111			111		
# Ferritin 800 to 1200	45			42	12		49			44		
Pop. Mean	894			839	1035		882			850		
Std. Deviation	342			384	452		297			305		
<b>% Ferritin 800 to 1200</b>	<b>41%</b>			<b>38%</b>	<b>36%</b>		<b>44%</b>			<b>40%</b>		



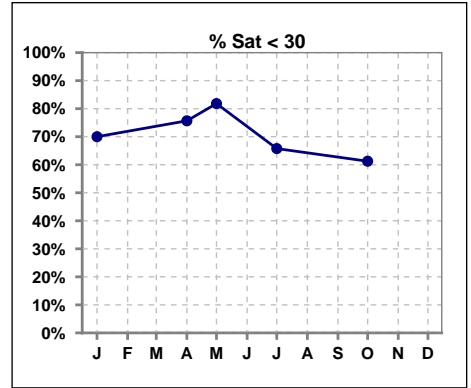
	Jan	Feb	Mar	Apr	May	Jun	Jul	Aug	Sep	Oct	Nov	Dec
# Ferritin	110			111	33		111			111		
# Ferritin > 1200	19			11	9		15			11		
Pop. Mean	894			839	1035		882			850		
Std. Deviation	342			384	452		297			305		
<b>% Ferritin &gt; 1200</b>	<b>17%</b>			<b>10%</b>	<b>27%</b>		<b>14%</b>			<b>10%</b>		



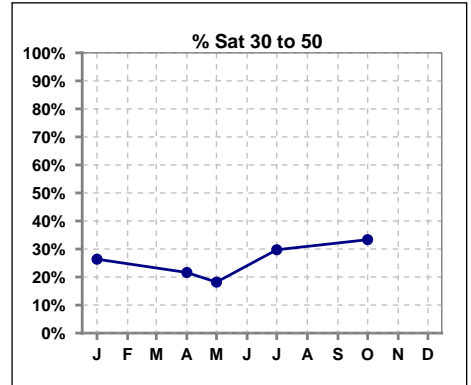
Methodology: a) All labs for 'Adequacy of Dialysis', 'Nutrition', 'Osteodystrophy', 'Anemia' and 'Diabetes' based on last value of month; b) BP's and #L processed are average of all values for month; c) Access data takes last access of month; d) Values for SGA and 'Infection Control' use most recent result.

**V. ANEMIA - CONT.**

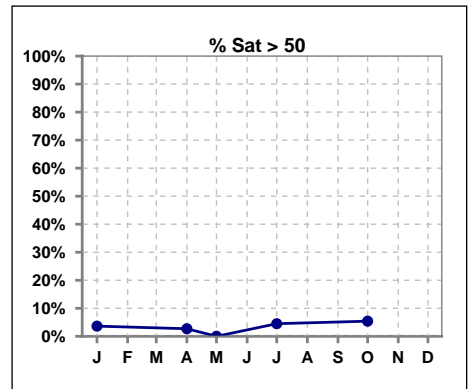
	Jan	Feb	Mar	Apr	May	Jun	Jul	Aug	Sep	Oct	Nov	Dec
# % Sat	110			111	33		111			111		
# % Sat < 30	77			84	27		73			68		
Pop. Mean	26			25	23		28			28		
Std. Deviation	10			11	10		11			12		
<b>% % Sat &lt; 30</b>	<b>70%</b>			<b>76%</b>	<b>82%</b>		<b>66%</b>			<b>61%</b>		



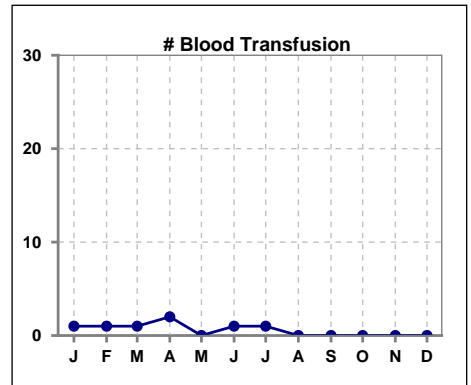
	Jan	Feb	Mar	Apr	May	Jun	Jul	Aug	Sep	Oct	Nov	Dec
# % Sat	110			111	33		111			111		
# % Sat 30 to 50	29			24	6		33			37		
Pop. Mean	26			25	23		28			28		
Std. Deviation	10			11	10		11			12		
<b>% % Sat 30 to 50</b>	<b>26%</b>			<b>22%</b>	<b>18%</b>		<b>30%</b>			<b>33%</b>		



	Jan	Feb	Mar	Apr	May	Jun	Jul	Aug	Sep	Oct	Nov	Dec
# % Sat	110			111	33		111			111		
# % Sat > 50	4			3	0		5			6		
Pop. Mean	26			25	23		28			28		
Std. Deviation	10			11	10		11			12		
<b>% % Sat &gt; 50</b>	<b>4%</b>			<b>3%</b>	<b>0%</b>		<b>5%</b>			<b>5%</b>		



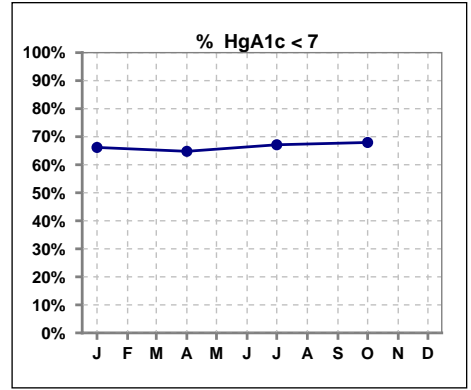
	Jan	Feb	Mar	Apr	May	Jun	Jul	Aug	Sep	Oct	Nov	Dec
# Patient	110	111	110	111	110	111	112	112	110	111	109	108
<b># Blood Transfusion</b>	<b>1</b>	<b>1</b>	<b>1</b>	<b>2</b>	<b>0</b>	<b>1</b>	<b>1</b>	<b>0</b>	<b>0</b>	<b>0</b>	<b>0</b>	<b>0</b>



Methodology: a) All labs for 'Adequacy of Dialysis', 'Nutrition', 'Osteodystrophy', 'Anemia' and 'Diabetes' based on last value of month; b) BP's and #L processed are average of all values for month; c) Access data takes last access of month; d) Values for SGA and 'Infection Control' use most recent result.

**VI. Diabetes**

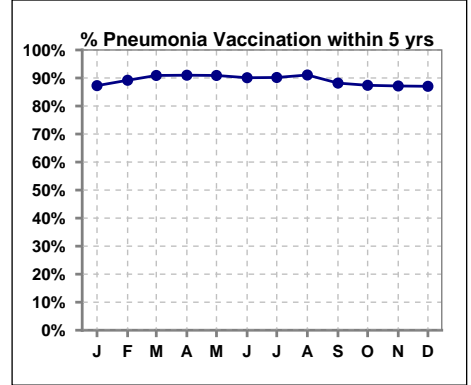
	Jan	Feb	Mar	Apr	May	Jun	Jul	Aug	Sep	Oct	Nov	Dec
# HgA1c	68			71			73			78		
# HgA1c < 7	45			46			49			53		
Pop. Mean	6.6			6.5			6.6			6.7		
Std. Deviation	1.20			1.37			1.28			1.63		
<b>% HgA1c &lt; 7</b>	<b>66%</b>			<b>65%</b>			<b>67%</b>			<b>68%</b>		



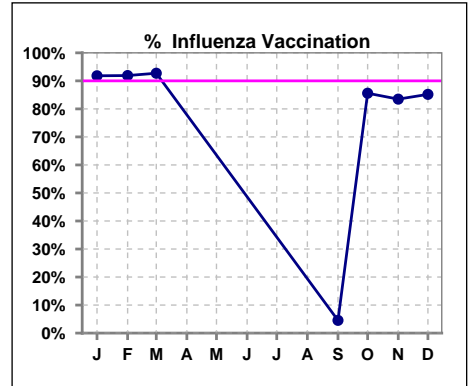
**VII. Infection Control**

**Pneumonia vaccination within the past five years**

	Jan	Feb	Mar	Apr	May	Jun	Jul	Aug	Sep	Oct	Nov	Dec
# Patient	110	111	110	111	110	111	112	112	110	111	109	108
# Pneumonia	96	99	100	101	100	100	101	102	97	97	95	94
% Pneumonia	87%	89%	91%	91%	91%	90%	90%	91%	88%	87%	87%	87%



	Jan	Feb	Mar	Apr	May	Jun	Jul	Aug	Sep	Oct	Nov	Dec
# Patient	110	111	110						110	111	109	108
# Influenza	101	102	102						5	95	91	92
% Influenza	92%	92%	93%						5%	86%	83%	85%

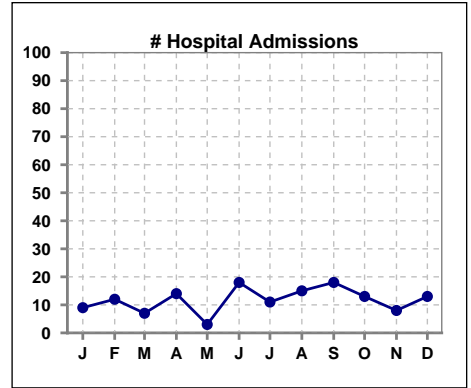


Methodology: a) All labs for 'Adequacy of Dialysis', 'Nutrition', 'Osteodystrophy', 'Anemia' and 'Diabetes' based on last value of month; b) BP's and #L processed are average of all values for month; c) Access data takes last access of month; d) Values for SGA and 'Infection Control' use most recent result.

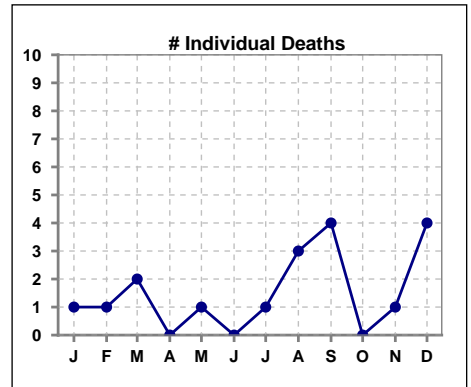


**VIII. Outcome measures**

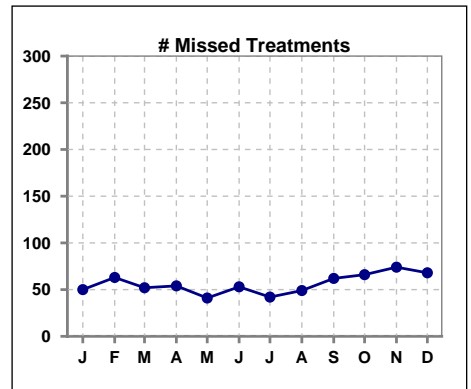
	Jan	Feb	Mar	Apr	May	Jun	Jul	Aug	Sep	Oct	Nov	Dec
# Patient	110	111	110	111	110	111	112	112	110	111	109	108
# Hospital Admissions	9	12	7	14	3	18	11	15	18	13	8	13



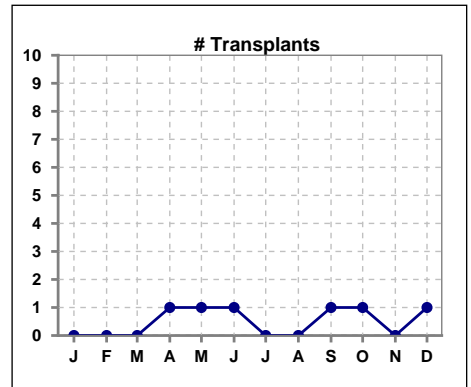
	Jan	Feb	Mar	Apr	May	Jun	Jul	Aug	Sep	Oct	Nov	Dec
# Patient	110	111	110	111	110	111	112	112	110	111	109	108
# Individual Deaths	1	1	2	0	1	0	1	3	4	0	1	4



	Jan	Feb	Mar	Apr	May	Jun	Jul	Aug	Sep	Oct	Nov	Dec
# Patient	110	111	110	111	110	111	112	112	110	111	109	108
# Missed Treatments	50	63	52	54	41	53	42	49	62	66	74	68



	Jan	Feb	Mar	Apr	May	Jun	Jul	Aug	Sep	Oct	Nov	Dec
# Patient	110	111	110	111	110	111	112	112	110	111	109	108
# Transplants	0	0	0	1	1	1	0	0	1	1	0	1



Methodology: a) All labs for 'Adequacy of Dialysis', 'Nutrition', 'Osteodystrophy', 'Anemia' and 'Diabetes' based on last value of month; b) BP's and #L processed are average of all values for month; c) Access data takes last access of month; d) Values for SGA and 'Infection Control' use most recent result.