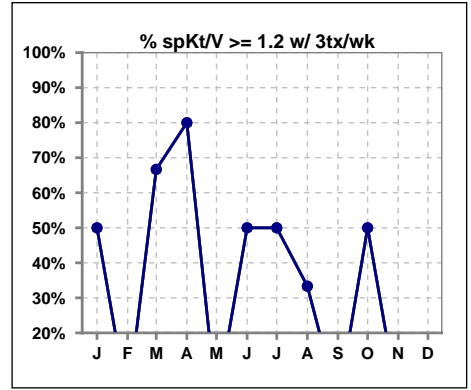
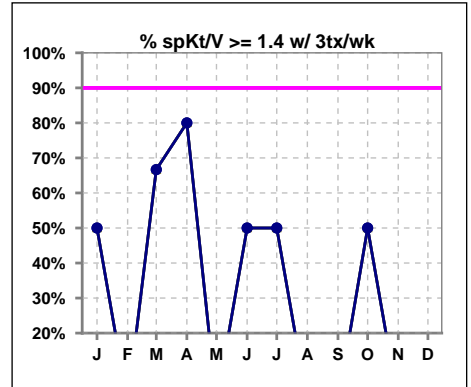


**I. ADEQUACY OF DIALYSIS**

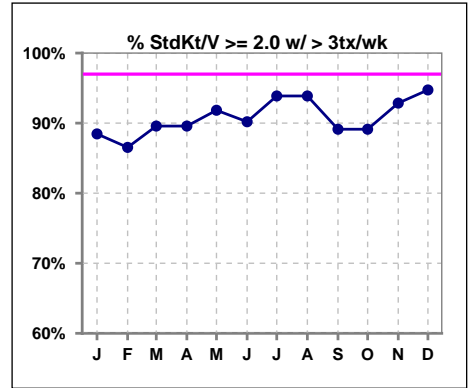
	Jan	Feb	Mar	Apr	May	Jun	Jul	Aug	Sep	Oct	Nov	Dec
# spKt/V w/3tx/wk	2	1	3	5	2	2	2	3	1	4	1	2
# spKt/V >=1.2 w/3tx/wk	1	0	2	4	0	1	1	1	0	2	0	0
Pop. Mean	1.19	1.00	1.52	1.47	1.02	1.13	1.22	0.87	0.77	1.19	0.80	0.81
Std. Deviation	0.59	0	0.60	0.37	0.07	0.49	0.57	0.34	0	0.45	0	0.17
% >=1.2 w/3tx/wk	50%	0%	67%	80%	0%	50%	50%	33%	0%	50%	0%	0%



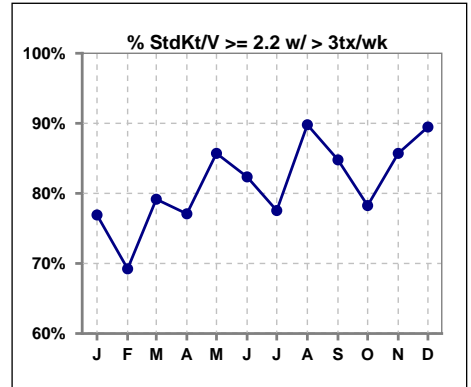
	Jan	Feb	Mar	Apr	May	Jun	Jul	Aug	Sep	Oct	Nov	Dec
# spKt/V w/3tx/wk	2	1	3	5	2	2	2	3	1	4	1	2
# spKt/V >=1.4 w/3tx/wk	1	0	2	4	0	1	1	0	0	2	0	0
Pop. Mean	1.19	1.00	1.52	1.47	1.02	1.13	1.22	0.87	0.77	1.19	0.80	0.81
Std. Deviation	0.59	0	0.60	0.37	0.07	0.49	0.57	0.34	0	0.45	0	0.17
% >=1.4 w/3tx/wk	50%	0%	67%	80%	0%	50%	50%	0%	0%	50%	0%	0%



	Jan	Feb	Mar	Apr	May	Jun	Jul	Aug	Sep	Oct	Nov	Dec
# StdKt/V w/>3tx/wk	52	52	48	48	49	51	49	49	46	46	56	57
# >= 2.0 w/>3tx/wk	46	45	43	43	45	46	46	46	41	41	52	54
Pop. Mean	2.36	2.37	2.41	2.41	2.43	2.35	2.39	2.48	2.33	2.45	2.46	2.56
Std. Deviation	0.47	0.46	0.50	0.41	0.41	0.31	0.37	0.41	0.32	0.35	0.33	0.35
% >= 2.0 w/>3tx/wk	88%	87%	90%	90%	92%	90%	94%	94%	89%	89%	93%	95%



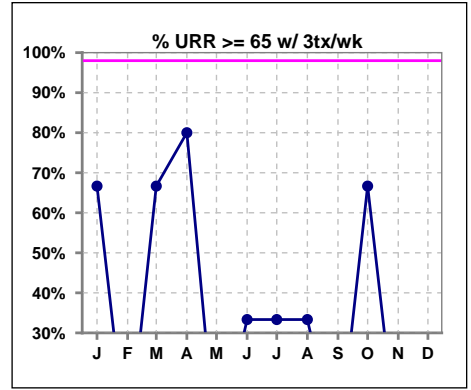
	Jan	Feb	Mar	Apr	May	Jun	Jul	Aug	Sep	Oct	Nov	Dec
# StdKt/V w/>3tx/wk	52	52	48	48	49	51	49	49	46	46	56	57
# >= 2.2 w/>3tx/wk	40	36	38	37	42	42	38	44	39	36	48	51
Pop. Mean	2.36	2.37	2.41	2.41	2.43	2.35	2.39	2.48	2.33	2.45	2.46	2.56
Std. Deviation	0.47	0.46	0.50	0.41	0.41	0.31	0.37	0.41	0.32	0.35	0.33	0.35
% >= 2.2 w/>3tx/wk	77%	69%	79%	77%	86%	82%	78%	90%	85%	78%	86%	89%



Methodology: a) All labs for 'Adequacy of Dialysis', 'Nutrition', 'Osteodystrophy' and 'Anemia' based on last value of month; b) Access data takes last access of month; c) Values for 'Infection Control' uses most recent result.

**I. ADEQUACY OF DIALYSIS - CONT.**

	Jan	Feb	Mar	Apr	May	Jun	Jul	Aug	Sep	Oct	Nov	Dec
# URR w/ 3tx/wk	3	1	3	5	2	3	3	3	1	3	2	2
# URR>=65 w/ 3tx/wk	2	0	2	4	0	1	1	1	0	2	0	0
Pop. Mean	66	53	70	70	56	54	56	52	46	66	50	49
Std. Deviation	17.27	0	17.48	11.96	3.91	16.16	18.02	14.47	0	16.46	4.15	10.50
% URR>=65 w/ 3tx/wk	67%	0%	67%	80%	0%	33%	33%	33%	0%	67%	0%	0%

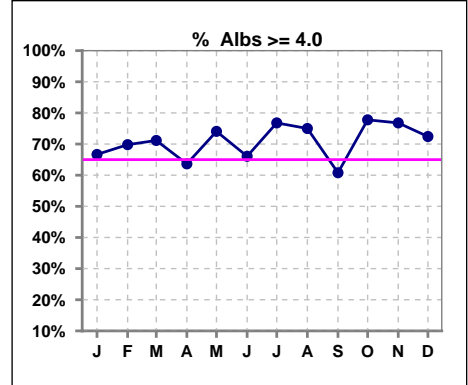


**Northwest Kidney Centers - Home Hemodialysis**  
**Quality Assurance Reports**  
 Through period ending Dec. 31, 2016

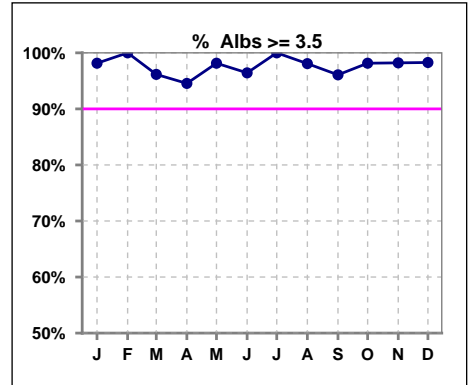
\*Albumin values use BCG method - as of July 2001

**II. NUTRITION**

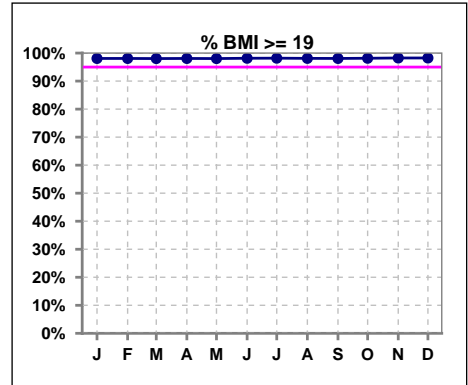
	Jan	Feb	Mar	Apr	May	Jun	Jul	Aug	Sep	Oct	Nov	Dec
# Albumin	54	53	52	55	54	56	56	52	51	54	56	58
# Albumin >= 4.0	36	37	37	35	40	37	43	39	31	42	43	42
Pop. Mean	4.1	4.1	4.1	4.0	4.1	4.1	4.2	4.1	4.0	4.2	4.1	4.1
Std. Deviation	0.34	0.27	0.34	0.33	0.30	0.34	0.30	0.27	0.30	0.30	0.32	0.33
% Alb >= 4.0	67%	70%	71%	64%	74%	66%	77%	75%	61%	78%	77%	72%



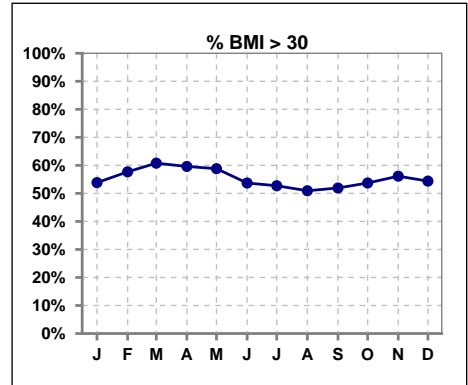
	Jan	Feb	Mar	Apr	May	Jun	Jul	Aug	Sep	Oct	Nov	Dec
# Albumin	54	53	52	55	54	56	56	52	51	54	56	58
# Albumin >= 3.5	53	53	50	52	53	54	56	51	49	53	55	57
Pop. Mean	4.1	4.1	4.1	4.0	4.1	4.1	4.2	4.1	4.0	4.2	4.1	4.1
Std. Deviation	0.34	0.27	0.34	0.33	0.30	0.34	0.30	0.27	0.30	0.30	0.32	0.33
% Alb >= 3.5	98%	100%	96%	95%	98%	96%	100%	98%	96%	98%	98%	98%



	Jan	Feb	Mar	Apr	May	Jun	Jul	Aug	Sep	Oct	Nov	Dec
# BMI	52	52	51	52	51	54	55	53	52	54	57	56
# BMI >= 19	51	51	50	51	50	53	54	52	51	53	56	56
Pop. Mean	32	32	32	32	32	32	32	31	31	31	32	31
Std. Deviation	7.6	7.6	7.6	7.4	7.4	7.6	7.4	7.4	7.8	7.6	7.7	7.6
% BMI >= 19	98%	98%	98%	98%	98%	98%	98%	98%	98%	98%	98%	98%



	Jan	Feb	Mar	Apr	May	Jun	Jul	Aug	Sep	Oct	Nov	Dec
# BMI	52	52	51	52	51	54	55	53	52	54	57	56
# BMI > 30	28	30	31	31	30	29	29	27	27	29	32	31
Pop. Mean	32	32	32	32	32	32	32	31	31	31	32	31
Std. Deviation	7.6	7.6	7.6	7.4	7.4	7.6	7.4	7.4	7.8	7.6	7.7	7.6
% BMI > 30	54%	58%	61%	60%	59%	54%	53%	51%	52%	54%	56%	54%

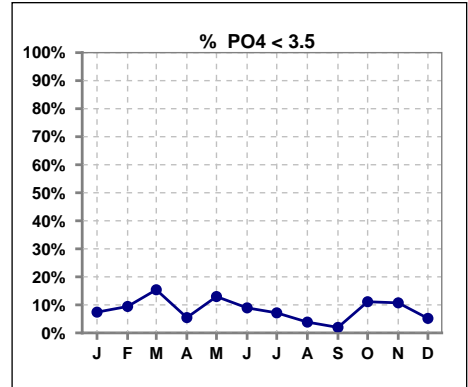


Methodology: a) All labs for 'Adequacy of Dialysis', 'Nutrition', 'Osteodystrophy' and 'Anemia' based on last value of month; b) Access data takes last access of month; c) Values for 'Infection Control' uses most recent result.

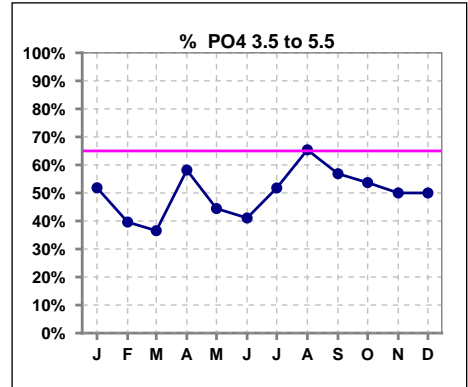
Lab methodology for PTH changed January 2012

**III. OSTEODYSTROPHY**

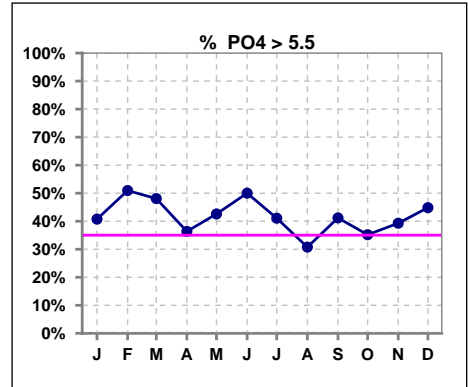
	Jan	Feb	Mar	Apr	May	Jun	Jul	Aug	Sep	Oct	Nov	Dec
# PO4	54	53	52	55	54	56	56	52	51	54	56	58
# PO4 < 3.5	4	5	8	3	7	5	4	2	1	6	6	3
Pop. Mean	5.4	5.8	5.5	5.3	5.3	5.6	5.5	5.4	5.3	5.1	5.1	5.5
Std. Deviation	1.67	1.79	1.83	1.49	1.65	1.79	1.77	1.58	1.19	1.49	1.41	1.42
% PO4 < 3.5	7%	9%	15%	5%	13%	9%	7%	4%	2%	11%	11%	5%



	Jan	Feb	Mar	Apr	May	Jun	Jul	Aug	Sep	Oct	Nov	Dec
# PO4	54	53	52	55	54	56	56	52	51	54	56	58
# PO4 3.5 to 5.5	28	21	19	32	24	23	29	34	29	29	28	29
Pop. Mean	5.4	5.8	5.5	5.3	5.3	5.6	5.5	5.4	5.3	5.1	5.1	5.5
Std. Deviation	1.67	1.79	1.83	1.49	1.65	1.79	1.77	1.58	1.19	1.49	1.41	1.42
% PO4 3.5 to 5.5	52%	40%	37%	58%	44%	41%	52%	65%	57%	54%	50%	50%



	Jan	Feb	Mar	Apr	May	Jun	Jul	Aug	Sep	Oct	Nov	Dec
# PO4	54	53	52	55	54	56	56	52	51	54	56	58
# PO4 > 5.5	22	27	25	20	23	28	23	16	21	19	22	26
Pop. Mean	5.4	5.8	5.5	5.3	5.3	5.6	5.5	5.4	5.3	5.1	5.1	5.5
Std. Deviation	1.67	1.79	1.83	1.49	1.65	1.79	1.77	1.58	1.19	1.49	1.41	1.42
% PO4 > 5.5	41%	51%	48%	36%	43%	50%	41%	31%	41%	35%	39%	45%

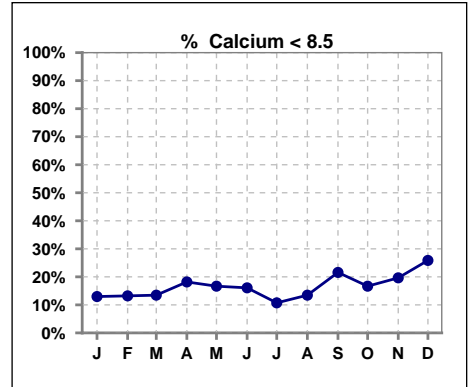


Methodology: a) All labs for 'Adequacy of Dialysis', 'Nutrition', 'Osteodystrophy' and 'Anemia' based on last value of month; b) Access data takes last access of month; c) Values for 'Infection Control' uses most recent result.

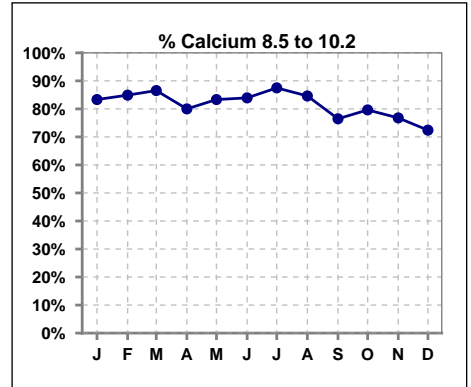
Lab methodology for PTH changed January 2012

**III. OSTEODYSTROPHY - CONT.**

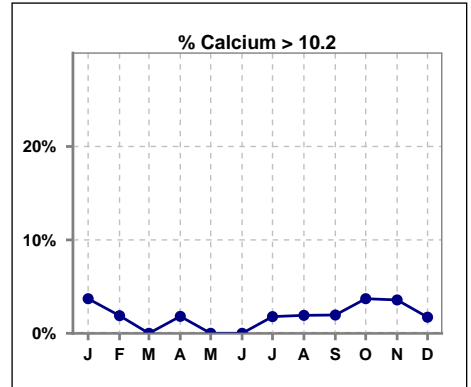
	Jan	Feb	Mar	Apr	May	Jun	Jul	Aug	Sep	Oct	Nov	Dec
# Calcium	54	53	52	55	54	56	56	52	51	54	56	58
# Calcium < 8.5	7	7	7	10	9	9	6	7	11	9	11	15
Pop. Mean	9.3	9.2	9.3	9.1	9.1	9.1	9.2	9.1	9.1	9.3	9.2	8.8
Std. Deviation	0.67	0.73	0.69	0.71	0.66	0.79	0.74	0.63	0.74	0.81	0.93	0.71
<b>% Calcium &lt; 8.5</b>	<b>13%</b>	<b>13%</b>	<b>13%</b>	<b>18%</b>	<b>17%</b>	<b>16%</b>	<b>11%</b>	<b>13%</b>	<b>22%</b>	<b>17%</b>	<b>20%</b>	<b>26%</b>



	Jan	Feb	Mar	Apr	May	Jun	Jul	Aug	Sep	Oct	Nov	Dec
# Calcium	54	53	52	55	54	56	56	52	51	54	56	58
# Calcium 8.5 to 10.2	45	45	45	44	45	47	49	44	39	43	43	42
Pop. Mean	9.3	9.2	9.3	9.1	9.1	9.1	9.2	9.1	9.1	9.3	9.2	8.8
Std. Deviation	0.67	0.73	0.69	0.71	0.66	0.79	0.74	0.63	0.74	0.81	0.93	0.71
<b>% Calcium 8.5 to 10.2</b>	<b>83%</b>	<b>85%</b>	<b>87%</b>	<b>80%</b>	<b>83%</b>	<b>84%</b>	<b>88%</b>	<b>85%</b>	<b>76%</b>	<b>80%</b>	<b>77%</b>	<b>72%</b>



	Jan	Feb	Mar	Apr	May	Jun	Jul	Aug	Sep	Oct	Nov	Dec
# Calcium	54	53	52	55	54	56	56	52	51	54	56	58
# Calcium > 10.2	2	1	0	1	0	0	1	1	1	2	2	1
Pop. Mean	9.3	9.2	9.3	9.1	9.1	9.1	9.2	9.1	9.1	9.3	9.2	8.8
Std. Deviation	0.67	0.73	0.69	0.71	0.66	0.79	0.74	0.63	0.74	0.81	0.93	0.71
<b>% Calcium &gt; 10.2</b>	<b>4%</b>	<b>2%</b>	<b>0%</b>	<b>2%</b>	<b>0%</b>	<b>0%</b>	<b>2%</b>	<b>2%</b>	<b>2%</b>	<b>4%</b>	<b>4%</b>	<b>2%</b>

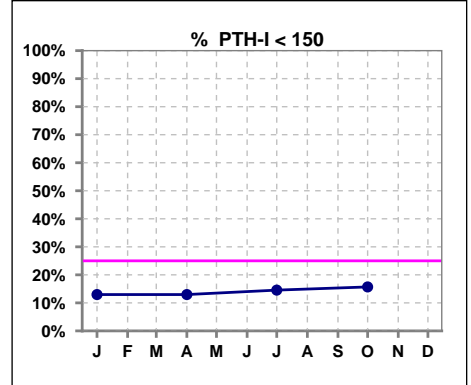


Methodology: a) All labs for 'Adequacy of Dialysis', 'Nutrition', 'Osteodystrophy' and 'Anemia' based on last value of month; b) Access data takes last access of month; c) Values for 'Infection Control' uses most recent result.

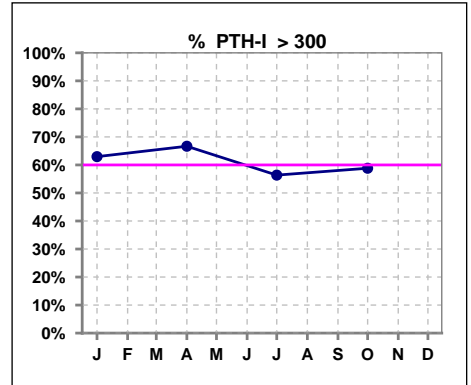
Lab methodology for PTH changed January 2012

**III. OSTEODYSTROPHY - CONT.**

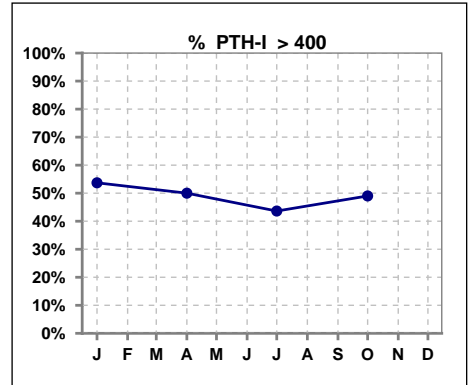
	Jan	Feb	Mar	Apr	May	Jun	Jul	Aug	Sep	Oct	Nov	Dec
# PTH-I	54			54			55			51		
# PTH-I < 150	7			7			8			8		
Pop. Mean	517			521			513			442		
Std. Deviation	403			376			551			292		
<b>% PTH-I &lt; 150</b>	<b>13%</b>			<b>13%</b>			<b>15%</b>			<b>16%</b>		



	Jan	Feb	Mar	Apr	May	Jun	Jul	Aug	Sep	Oct	Nov	Dec
# PTH-I	54			54			55			51		
# PTH-I > 300	34			36			31			30		
Pop. Mean	517			521			513			442		
Std. Deviation	403			376			551			292		
<b>% PTH-I &gt; 300</b>	<b>63%</b>			<b>67%</b>			<b>56%</b>			<b>59%</b>		



	Jan	Feb	Mar	Apr	May	Jun	Jul	Aug	Sep	Oct	Nov	Dec
# PTH-I	54			54			55			51		
# PTH-I > 400	54			54			55			51		
Pop. Mean	517			521			513			442		
Std. Deviation	403			376			551			292		
<b>% PTH-I &gt; 400</b>	<b>54%</b>			<b>50%</b>			<b>44%</b>			<b>49%</b>		

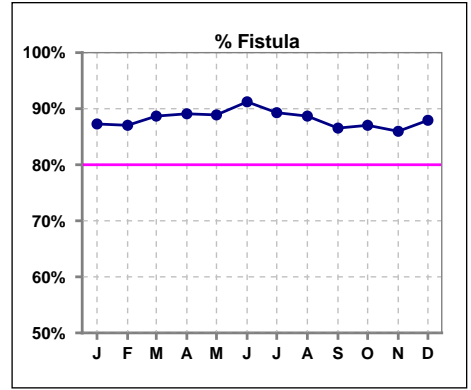


Methodology: a) All labs for 'Adequacy of Dialysis', 'Nutrition', 'Osteodystrophy' and 'Anemia' based on last value of month; b) Access data takes last access of month; c) Values for 'Infection Control' uses most recent result.

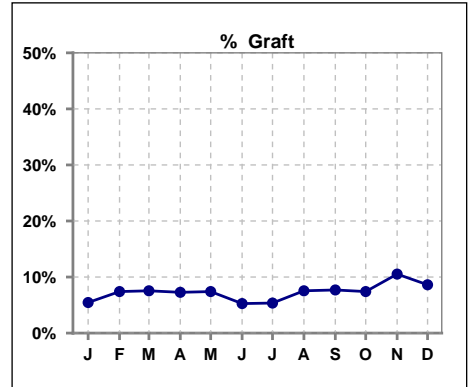
**Northwest Kidney Centers - Home Hemodialysis**  
**Quality Assurance Reports**  
 Through period ending Dec. 31, 2016

**IV. ACCESS**

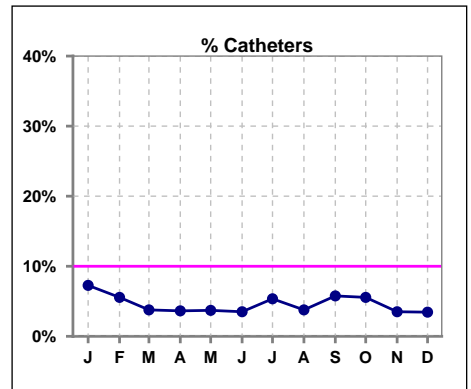
	Jan	Feb	Mar	Apr	May	Jun	Jul	Aug	Sep	Oct	Nov	Dec
# Access	55	54	53	55	54	57	56	53	52	54	57	58
# Fistula	48	47	47	49	48	52	50	47	45	47	49	51
% Fistula	87%	87%	89%	89%	89%	91%	89%	89%	87%	87%	86%	88%



	Jan	Feb	Mar	Apr	May	Jun	Jul	Aug	Sep	Oct	Nov	Dec
# Access	55	54	53	55	54	57	56	53	52	54	57	58
# Graft	3	4	4	4	4	3	3	4	4	4	6	5
% Graft	5%	7%	8%	7%	7%	5%	5%	8%	8%	7%	11%	9%



	Jan	Feb	Mar	Apr	May	Jun	Jul	Aug	Sep	Oct	Nov	Dec
# Access	55	54	53	55	54	57	56	53	52	54	57	58
# Catheters	4	3	2	2	2	2	3	2	3	3	2	2
% Catheters	7%	6%	4%	4%	4%	4%	5%	4%	6%	6%	4%	3%



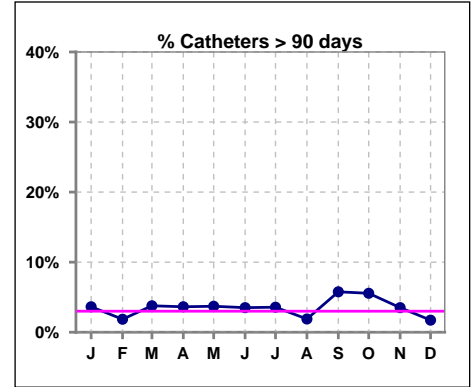
Methodology: a) All labs for 'Adequacy of Dialysis', 'Nutrition', 'Osteodystrophy' and 'Anemia' based on last value of month; b) Access data takes last access of month; c) Values for 'Infection Control' uses most recent result.

**IV. ACCESS - CONT.**

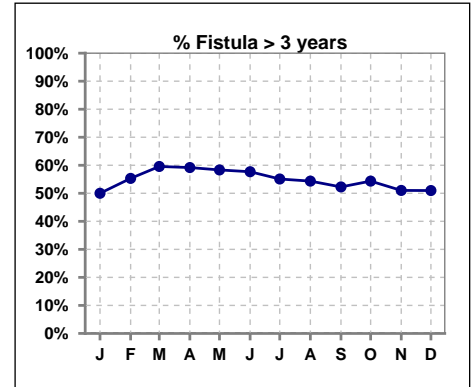
**Catheters > 90 days**

	Jan	Feb	Mar	Apr	May	Jun	Jul	Aug	Sep	Oct	Nov	Dec
# Access	55	54	53	55	54	57	56	53	52	54	57	58
# Catheters	2	1	2	2	2	2	2	1	3	3	2	1
<b>% Catheters</b>	<b>4%</b>	<b>2%</b>	<b>4%</b>	<b>4%</b>	<b>4%</b>	<b>4%</b>	<b>4%</b>	<b>2%</b>	<b>6%</b>	<b>6%</b>	<b>4%</b>	<b>2%</b>

Definition: Catheter in use on last treatment of the month



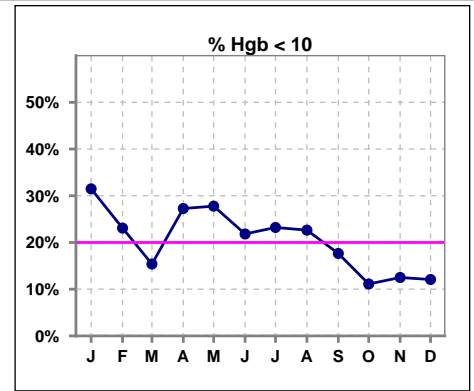
	Jan	Feb	Mar	Apr	May	Jun	Jul	Aug	Sep	Oct	Nov	Dec
# Fistula	48	47	47	49	48	52	49	46	44	46	49	51
# Fistula > 3 yrs	24	26	28	29	28	30	27	25	23	25	25	26
<b>% Fistula &gt; 3 yrs</b>	<b>50%</b>	<b>55%</b>	<b>60%</b>	<b>59%</b>	<b>58%</b>	<b>58%</b>	<b>55%</b>	<b>54%</b>	<b>52%</b>	<b>54%</b>	<b>51%</b>	<b>51%</b>



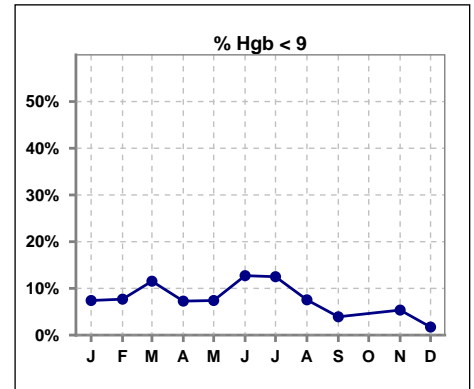


**V. ANEMIA**

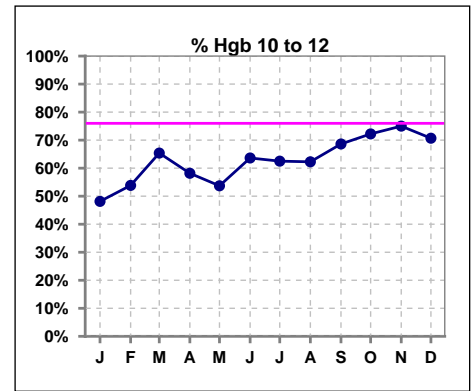
	Jan	Feb	Mar	Apr	May	Jun	Jul	Aug	Sep	Oct	Nov	Dec
# Hgb	54	52	52	55	54	55	56	53	51	54	56	58
# Hgb < 10	17	12	8	15	15	12	13	12	9	6	7	7
Pop. Mean	10.8	11.0	10.9	10.8	10.9	10.7	10.8	10.8	11.0	11.0	10.9	11.0
Std. Deviation	1.5	1.5	1.5	1.5	1.5	1.5	1.5	1.3	1.2	1.0	1.1	1.1
<b>% Hgb &lt; 10</b>	<b>31%</b>	<b>23%</b>	<b>15%</b>	<b>27%</b>	<b>28%</b>	<b>22%</b>	<b>23%</b>	<b>23%</b>	<b>18%</b>	<b>11%</b>	<b>13%</b>	<b>12%</b>



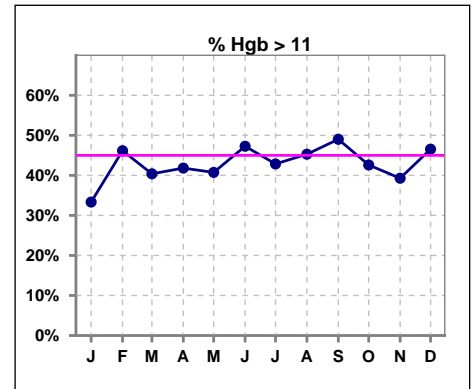
	Jan	Feb	Mar	Apr	May	Jun	Jul	Aug	Sep	Oct	Nov	Dec
# Hgb	54	52	52	55	54	55	56	53	51	54	56	58
# Hgb < 9	4	4	6	4	4	7	7	4	2		3	1
Pop. Mean	10.8	11.0	10.9	10.8	10.9	10.7	10.8	10.8	11.0	11.0	10.9	11.0
Std. Deviation	1.5	1.5	1.5	1.5	1.5	1.5	1.5	1.3	1.2	1.0	1.1	1.1
<b>% Hgb &lt; 9</b>	<b>7%</b>	<b>8%</b>	<b>12%</b>	<b>7%</b>	<b>7%</b>	<b>13%</b>	<b>13%</b>	<b>8%</b>	<b>4%</b>		<b>5%</b>	<b>2%</b>



	Jan	Feb	Mar	Apr	May	Jun	Jul	Aug	Sep	Oct	Nov	Dec
# Hgb	54	52	52	55	54	55	56	53	51	54	56	58
# Hgb 10 to 12	26	28	34	32	29	35	35	33	35	39	42	41
Pop. Mean	10.8	11.0	10.9	10.8	10.9	10.7	10.8	10.8	11.0	11.0	10.9	11.0
Std. Deviation	1.5	1.5	1.5	1.5	1.5	1.5	1.5	1.3	1.2	1.0	1.1	1.1
<b>% Hgb 10 to 12</b>	<b>48%</b>	<b>54%</b>	<b>65%</b>	<b>58%</b>	<b>54%</b>	<b>64%</b>	<b>63%</b>	<b>62%</b>	<b>69%</b>	<b>72%</b>	<b>75%</b>	<b>71%</b>

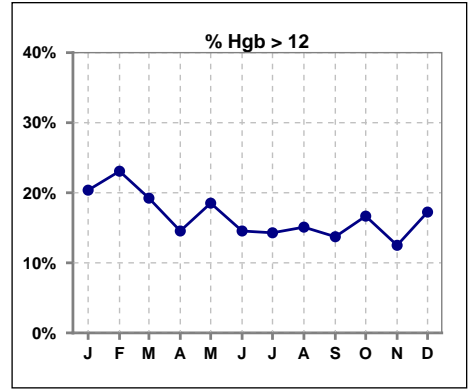


	Jan	Feb	Mar	Apr	May	Jun	Jul	Aug	Sep	Oct	Nov	Dec
# Hgb	54	52	52	55	54	55	56	53	51	54	56	58
# Hgb > 11	18	24	21	23	22	26	24	24	25	23	22	27
Pop. Mean	10.8	11.0	10.9	10.8	10.9	10.7	10.8	10.8	11.0	11.0	10.9	11.0
Std. Deviation	1.5	1.5	1.5	1.5	1.5	1.5	1.5	1.3	1.2	1.0	1.1	1.1
<b>% Hgb &gt; 11</b>	<b>33%</b>	<b>46%</b>	<b>40%</b>	<b>42%</b>	<b>41%</b>	<b>47%</b>	<b>43%</b>	<b>45%</b>	<b>49%</b>	<b>43%</b>	<b>39%</b>	<b>47%</b>



**V. ANEMIA - CONT.**

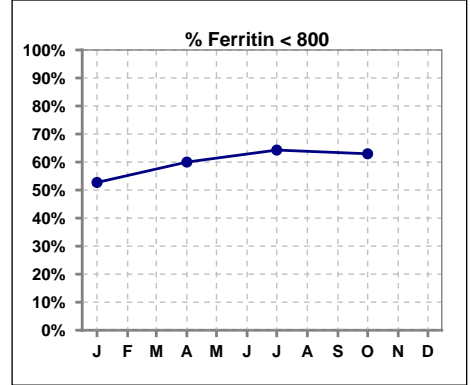
	Jan	Feb	Mar	Apr	May	Jun	Jul	Aug	Sep	Oct	Nov	Dec
# Hgb	54	52	52	55	54	55	56	53	51	54	56	58
# Hgb > 12	11	12	10	8	10	8	8	8	7	9	7	10
Pop. Mean	10.8	11.0	10.9	10.8	10.9	10.7	10.8	10.8	11.0	11.0	10.9	11.0
Std. Deviation	1.5	1.5	1.5	1.5	1.5	1.5	1.5	1.3	1.2	1.0	1.1	1.1
<b>% Hgb &gt; 12</b>	<b>20%</b>	<b>23%</b>	<b>19%</b>	<b>15%</b>	<b>19%</b>	<b>15%</b>	<b>14%</b>	<b>15%</b>	<b>14%</b>	<b>17%</b>	<b>13%</b>	<b>17%</b>



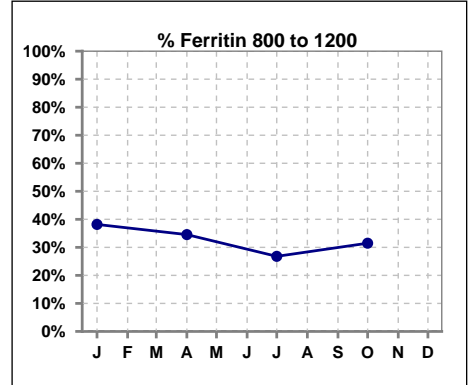
**V. ANEMIA - CONT.**

**Iron Profile**

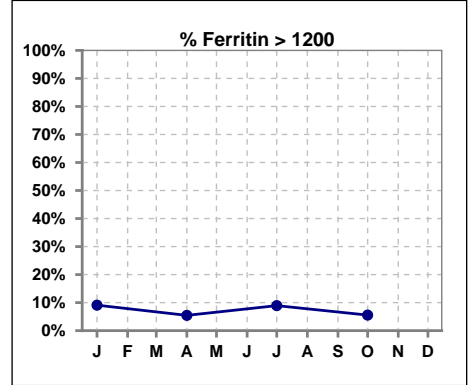
	Jan	Feb	Mar	Apr	May	Jun	Jul	Aug	Sep	Oct	Nov	Dec
# Ferritin	55			55			56			54		
# Ferritin < 800	29			33			36			34		
Pop. Mean	756			695			732			690		
Std. Deviation	359			337			372			307		
<b>% Ferritin &lt; 800</b>	<b>53%</b>			<b>60%</b>			<b>64%</b>			<b>63%</b>		



	Jan	Feb	Mar	Apr	May	Jun	Jul	Aug	Sep	Oct	Nov	Dec
# Ferritin	55			55			56			54		
# Ferritin 800 to 1200	21			19			15			17		
Pop. Mean	756			695			732			690		
Std. Deviation	359			337			372			307		
<b>% Ferritin 800 to 1200</b>	<b>38%</b>			<b>35%</b>			<b>27%</b>			<b>31%</b>		

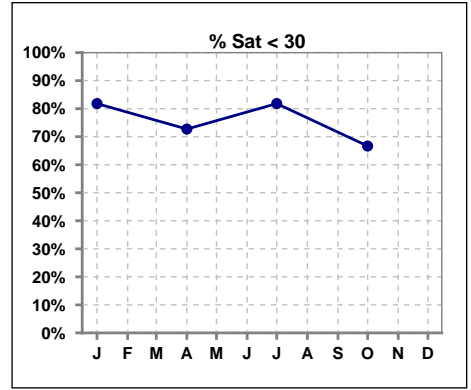


	Jan	Feb	Mar	Apr	May	Jun	Jul	Aug	Sep	Oct	Nov	Dec
# Ferritin	55			55			56			54		
# Ferritin > 1200	5			3			5			3		
Pop. Mean	756			695			732			690		
Std. Deviation	359			337			372			307		
<b>% Ferritin &gt; 1200</b>	<b>9%</b>			<b>5%</b>			<b>9%</b>			<b>6%</b>		

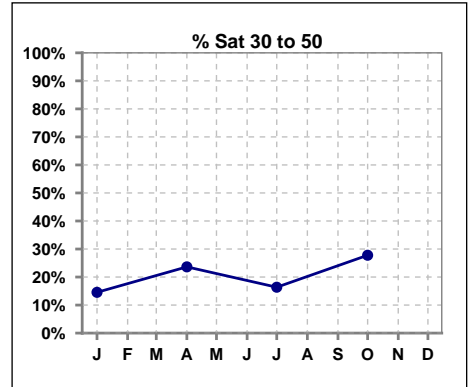


**V. ANEMIA - CONT.**

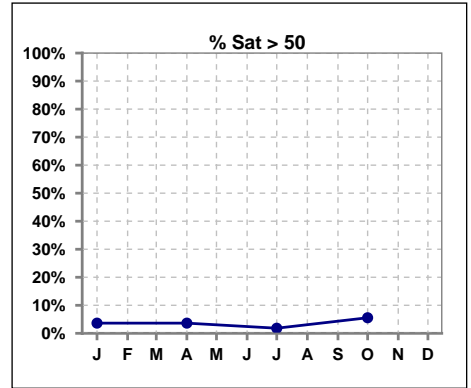
	Jan	Feb	Mar	Apr	May	Jun	Jul	Aug	Sep	Oct	Nov	Dec
# % Sat	55			55			55			54		
# % Sat < 30	45			40			45			36		
Pop. Mean	24			25			24			27		
Std. Deviation	11			13			11			14		
<b>% % Sat &lt; 30</b>	<b>82%</b>			<b>73%</b>			<b>82%</b>			<b>67%</b>		



	Jan	Feb	Mar	Apr	May	Jun	Jul	Aug	Sep	Oct	Nov	Dec
# % Sat	55			55			55			54		
# % Sat 30 to 50	8			13			9			15		
Pop. Mean	24			25			24			27		
Std. Deviation	11			13			11			14		
<b>% Sat% 30 to 50</b>	<b>15%</b>			<b>24%</b>			<b>16%</b>			<b>28%</b>		

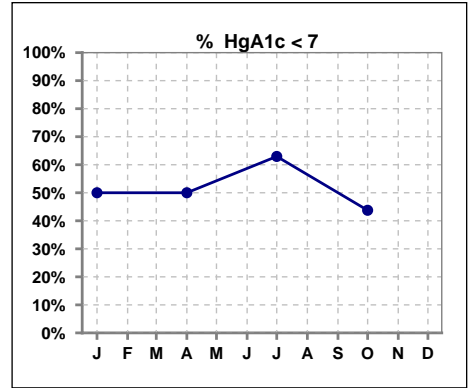


	Jan	Feb	Mar	Apr	May	Jun	Jul	Aug	Sep	Oct	Nov	Dec
# % Sat	55			55			55			54		
# % Sat > 50	2			2			1			3		
Pop. Mean	24			25			24			27		
Std. Deviation	11			13			11			14		
<b>% % Sat &gt; 50</b>	<b>4%</b>			<b>4%</b>			<b>2%</b>			<b>6%</b>		



**VI. Diabetes**

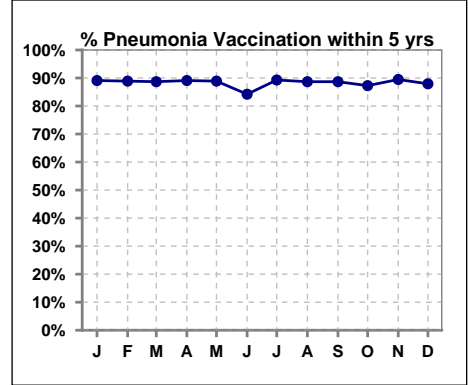
	Jan	Feb	Mar	Apr	May	Jun	Jul	Aug	Sep	Oct	Nov	Dec
# HgA1c	28			22			27			16		
# HgA1c < 7	14			11			17			7		
Pop. Mean	7.2			7.1			6.3			7.0		
Std. Deviation	1.45			1.46			1.11			1.24		
% HgA1c < 7	50%			50%			63%			44%		



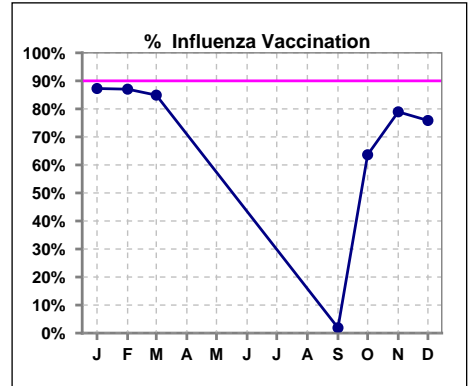
**VII. Infection Control**

**Pneumonia vaccination within the past five years**

	Jan	Feb	Mar	Apr	May	Jun	Jul	Aug	Sep	Oct	Nov	Dec
# Patient	55	54	53	55	54	57	56	53	53	55	57	58
# Pneumonia	49	48	47	49	48	48	50	47	47	48	51	51
<b>% Pneumonia</b>	<b>89%</b>	<b>89%</b>	<b>89%</b>	<b>89%</b>	<b>89%</b>	<b>84%</b>	<b>89%</b>	<b>89%</b>	<b>89%</b>	<b>87%</b>	<b>89%</b>	<b>88%</b>



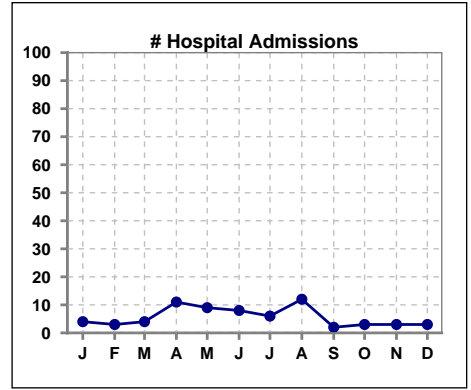
	Jan	Feb	Mar	Apr	May	Jun	Jul	Aug	Sep	Oct	Nov	Dec
# Patient	55	54	53						53	55	57	58
# Influenza	48	47	45						1	35	45	44
<b>% Influenza</b>	<b>87%</b>	<b>87%</b>	<b>85%</b>						<b>2%</b>	<b>64%</b>	<b>79%</b>	<b>76%</b>



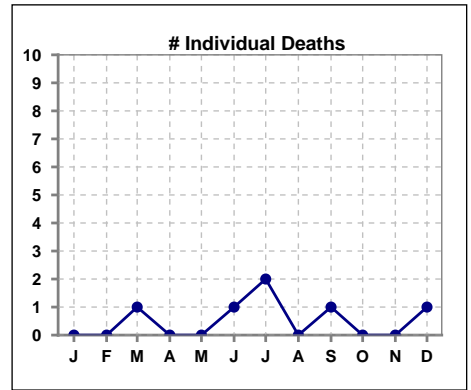
Methodology: a) All labs for 'Adequacy of Dialysis', 'Nutrition', 'Osteodystrophy' and 'Anemia' based on last value of month; b) Access data takes last access of month; c) Values for 'Infection Control' uses most recent result.

**VIII. Outcome measures**

	Jan	Feb	Mar	Apr	May	Jun	Jul	Aug	Sep	Oct	Nov	Dec
<b># Patient</b>	55	54	53	55	54	57	56	53	53	55	57	58
<b># Hospital Admissions</b>	4	3	4	11	9	8	6	12	2	3	3	3



	Jan	Feb	Mar	Apr	May	Jun	Jul	Aug	Sep	Oct	Nov	Dec
<b># Patient</b>	55	54	53	55	54	57	56	53	53	55	57	58
<b># Individual Deaths</b>	0	0	1	0	0	1	2	0	1	0	0	1



	Jan	Feb	Mar	Apr	May	Jun	Jul	Aug	Sep	Oct	Nov	Dec
<b># Patient</b>	55	54	53	55	54	57	56	53	53	55	57	58
<b># Transplants</b>	0	2	1	0	0	0	0	2	0	0	0	0

