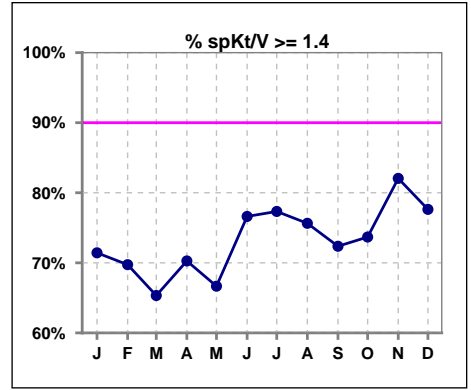
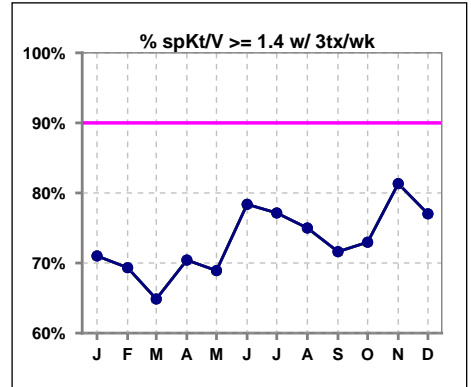


**I. ADEQUACY OF DIALYSIS**

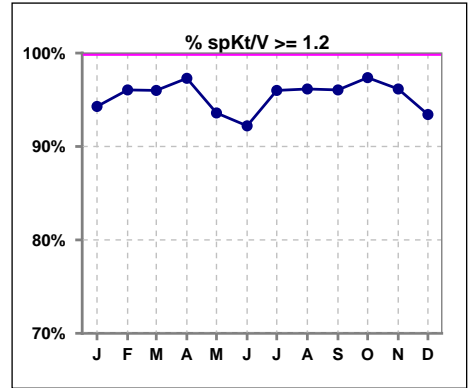
	Jan	Feb	Mar	Apr	May	Jun	Jul	Aug	Sep	Oct	Nov	Dec
# spKt/V	70	76	75	74	78	77	75	78	76	76	78	76
# spKt/V >= 1.4	50	53	49	52	52	59	58	59	55	56	64	59
Pop. Mean	1.57	1.58	1.50	1.55	1.51	1.58	1.60	1.60	1.59	1.59	1.66	1.62
Std. Deviation	0.33	0.31	0.23	0.27	0.28	0.31	0.32	0.33	0.32	0.30	0.30	0.33
% spKt/V >= 1.4	71%	70%	65%	70%	67%	77%	77%	76%	72%	74%	82%	78%



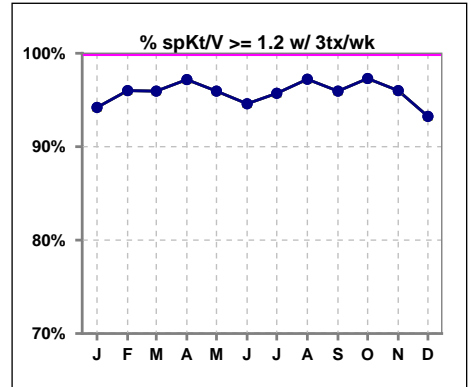
	Jan	Feb	Mar	Apr	May	Jun	Jul	Aug	Sep	Oct	Nov	Dec
# spKt/V w/ 3tx/wk	69	75	74	71	74	74	70	72	74	74	75	74
# spKt/V >= 1.4 w/3tx/wk	49	52	48	50	51	58	54	54	53	54	61	57
Pop. Mean	1.55	1.57	1.50	1.55	1.53	1.59	1.59	1.59	1.57	1.57	1.65	1.61
Std. Deviation	0.31	0.30	0.23	0.27	0.25	0.28	0.30	0.32	0.31	0.28	0.30	0.33
% >= 1.4 w/3tx/wk	71%	69%	65%	70%	69%	78%	77%	75%	72%	73%	81%	77%



	Jan	Feb	Mar	Apr	May	Jun	Jul	Aug	Sep	Oct	Nov	Dec
# spKt/V	70	76	75	74	78	77	75	78	76	76	78	76
# spKt/V >= 1.2	66	73	72	72	73	71	72	75	73	74	75	71
Pop. Mean	1.57	1.58	1.50	1.55	1.51	1.58	1.60	1.60	1.59	1.59	1.66	1.62
Std. Deviation	0.33	0.31	0.23	0.27	0.28	0.31	0.32	0.33	0.32	0.30	0.30	0.33
% spKt/V >= 1.2	94%	96%	96%	97%	94%	92%	96%	96%	96%	97%	96%	93%



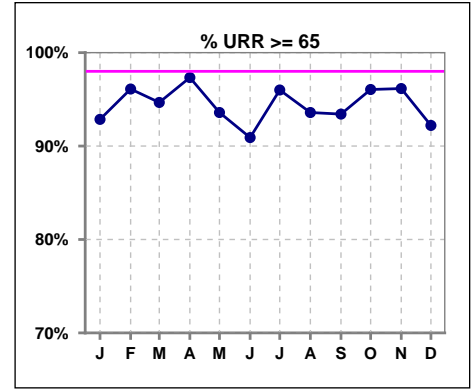
	Jan	Feb	Mar	Apr	May	Jun	Jul	Aug	Sep	Oct	Nov	Dec
# spKt/V w/ 3tx/wk	69	75	74	71	74	74	70	72	74	74	75	74
# spKt/V >= 1.2 w/3tx/wk	65	72	71	69	71	70	67	70	71	72	72	69
Pop. Mean	1.55	1.57	1.50	1.55	1.53	1.59	1.59	1.59	1.57	1.57	1.65	1.61
Std. Deviation	0.31	0.30	0.23	0.27	0.25	0.28	0.30	0.32	0.31	0.28	0.30	0.33
% >= 1.2 w/3tx/wk	94%	96%	96%	97%	96%	95%	96%	97%	96%	97%	96%	93%



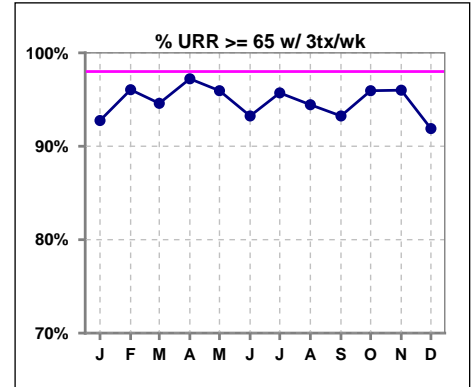
Methodology: a) All labs for 'Adequacy of Dialysis', 'Nutrition', 'Osteodystrophy', 'Anemia' and 'Diabetes' based on last value of month; b) BP's and #L processed are average of all values for month; c) Access data takes last access of month; d) Values for SGA and 'Infection Control' use most recent result.

**I. ADEQUACY OF DIALYSIS - CONT.**

	Jan	Feb	Mar	Apr	May	Jun	Jul	Aug	Sep	Oct	Nov	Dec
# URR	70	77	75	75	78	77	75	78	76	76	78	77
# URR >= 65	65	74	71	73	73	70	72	73	71	73	75	71
Pop. Mean	73	74	73	74	73	74	74	74	74	74	75	75
Std. Deviation	7.02	6.49	5.63	5.94	6.83	6.79	6.25	6.41	6.85	5.81	5.90	7.26
% URR >= 65	93%	96%	95%	97%	94%	91%	96%	94%	93%	96%	96%	92%



	Jan	Feb	Mar	Apr	May	Jun	Jul	Aug	Sep	Oct	Nov	Dec
# URR w/ 3tx/wk	69	76	74	72	74	74	70	72	74	74	75	74
# URR>=65 w/ 3tx/wk	64	73	70	70	71	69	67	68	69	71	72	68
Pop. Mean	73	74	73	74	73	74	74	74	74	74	75	74
Std. Deviation	6.96	6.40	5.62	5.92	5.65	6.03	6.16	6.31	6.74	5.60	5.90	7.23
% URR>=65 w/ 3tx/wk	93%	96%	95%	97%	96%	93%	96%	94%	93%	96%	96%	92%

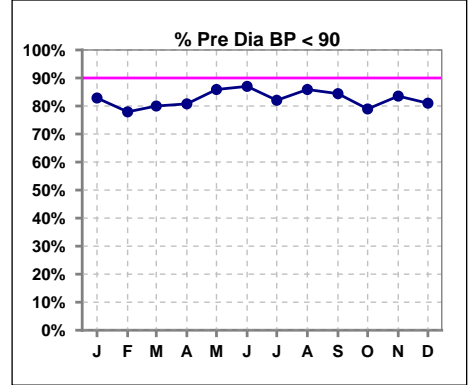


Methodology: a) All labs for 'Adequacy of Dialysis', 'Nutrition', 'Osteodystrophy', 'Anemia' and 'Diabetes' based on last value of month; b) BP's and #L processed are average of all values for month; c) Access data takes last access of month; d) Values for SGA and 'Infection Control' use most recent result.

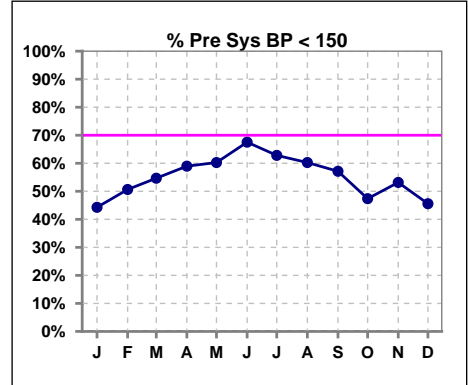
**I. ADEQUACY OF DIALYSIS - CONT.**

**Blood Pressure Control (Pre)**

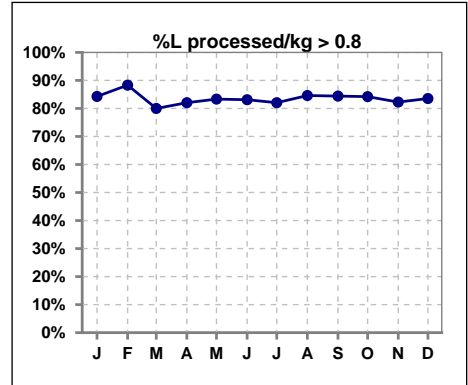
	Jan	Feb	Mar	Apr	May	Jun	Jul	Aug	Sep	Oct	Nov	Dec
# Pre Dia BP	70	77	75	78	78	77	78	78	77	76	79	79
# Pre Dia BP < 90	58	60	60	63	67	67	64	67	65	60	66	64
Pop. Mean	78	78	77	77	76	75	75	76	77	78	77	78
Std. Deviation	12.1	12.6	12.9	12.4	12.4	13.4	14.1	13.2	13.4	13.4	12.4	12.9
<b>% Pre Dia BP &lt; 90</b>	<b>83%</b>	<b>78%</b>	<b>80%</b>	<b>81%</b>	<b>86%</b>	<b>87%</b>	<b>82%</b>	<b>86%</b>	<b>84%</b>	<b>79%</b>	<b>84%</b>	<b>81%</b>



	Jan	Feb	Mar	Apr	May	Jun	Jul	Aug	Sep	Oct	Nov	Dec
# Pre Sys BP	70	77	75	78	78	77	78	78	77	76	79	79
# Pre Sys BP < 150	31	39	41	46	47	52	49	47	44	36	42	36
Pop. Mean	150	150	149	147	147	144	143	144	145	149	148	151
Std. Deviation	18.6	19.7	18.7	18.2	18.9	18.8	21.4	20.4	20.2	20.1	20.3	20.2
<b>%Pre Sys BP &lt;150</b>	<b>44%</b>	<b>51%</b>	<b>55%</b>	<b>59%</b>	<b>60%</b>	<b>68%</b>	<b>63%</b>	<b>60%</b>	<b>57%</b>	<b>47%</b>	<b>53%</b>	<b>46%</b>



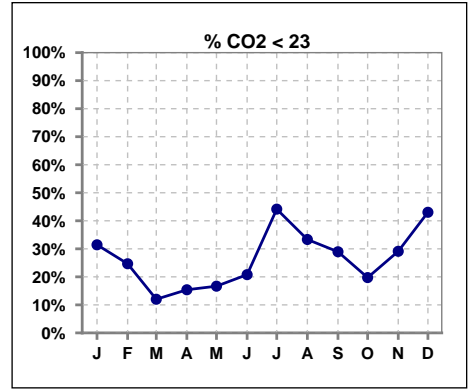
	Jan	Feb	Mar	Apr	May	Jun	Jul	Aug	Sep	Oct	Nov	Dec
# L processed/kg	70	77	75	78	78	77	78	78	77	76	79	79
# L processed/kg>0.8	59	68	60	64	65	64	64	66	65	64	65	66
Pop. Mean	1	1	1	1	1	1	1	1	1	1	1	1
Std. Deviation	0.3	0.3	0.3	0.3	0.3	0.3	0.3	0.3	0.3	0.3	0.3	0.3
<b>% L processed/kg&gt;0.8</b>	<b>84%</b>	<b>88%</b>	<b>80%</b>	<b>82%</b>	<b>83%</b>	<b>83%</b>	<b>82%</b>	<b>85%</b>	<b>84%</b>	<b>84%</b>	<b>82%</b>	<b>84%</b>



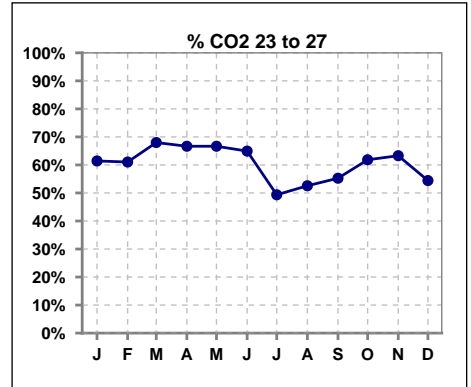
Methodology: a) All labs for 'Adequacy of Dialysis', 'Nutrition', 'Osteodystrophy', 'Anemia' and 'Diabetes' based on last value of month; b) BP's and #L processed are average of all values for month; c) Access data takes last access of month; d) Values for SGA and 'Infection Control' use most recent result.

**I. ADEQUACY OF DIALYSIS - CONT.**

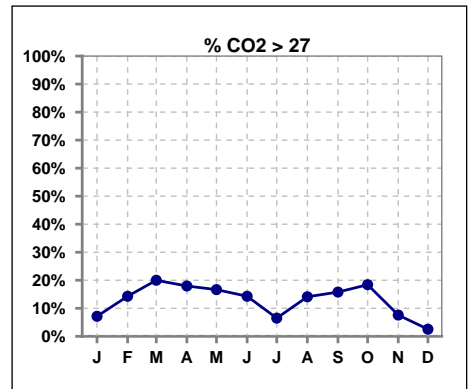
	Jan	Feb	Mar	Apr	May	Jun	Jul	Aug	Sep	Oct	Nov	Dec
# CO2	70	77	75	78	78	77	77	78	76	76	79	79
# CO2 < 23	22	19	9	12	13	16	34	26	22	15	23	34
Pop. Mean	24	24	25	25	25	25	23	24	24	25	24	23
Std. Deviation	3.00	3.63	3.36	2.96	3.16	2.79	2.82	3.23	2.97	3.55	3.00	2.65
<b>% CO2 &lt; 23</b>	<b>31%</b>	<b>25%</b>	<b>12%</b>	<b>15%</b>	<b>17%</b>	<b>21%</b>	<b>44%</b>	<b>33%</b>	<b>29%</b>	<b>20%</b>	<b>29%</b>	<b>43%</b>



	Jan	Feb	Mar	Apr	May	Jun	Jul	Aug	Sep	Oct	Nov	Dec
# CO2	70	77	75	78	78	77	77	78	76	76	79	79
# CO2 23 to 27	43	47	51	52	52	50	38	41	42	47	50	43
Pop. Mean	24	24	25	25	25	25	23	24	24	25	24	23
Std. Deviation	3.00	3.63	3.36	2.96	3.16	2.79	2.82	3.23	2.97	3.55	3.00	2.65
<b>% CO2 23 to 27</b>	<b>61%</b>	<b>61%</b>	<b>68%</b>	<b>67%</b>	<b>67%</b>	<b>65%</b>	<b>49%</b>	<b>53%</b>	<b>55%</b>	<b>62%</b>	<b>63%</b>	<b>54%</b>



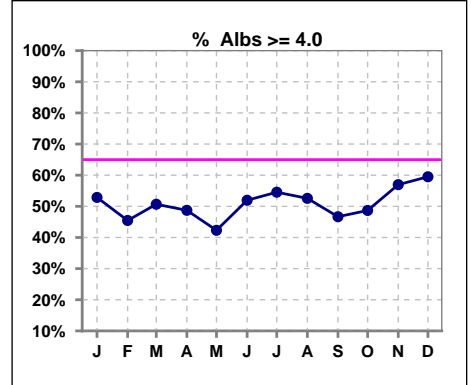
	Jan	Feb	Mar	Apr	May	Jun	Jul	Aug	Sep	Oct	Nov	Dec
# CO2	70	77	75	78	78	77	77	78	76	76	79	79
# CO2 > 27	5	11	15	14	13	11	5	11	12	14	6	2
Pop. Mean	24	24	25	25	25	25	23	24	24	25	24	23
Std. Deviation	3.00	3.63	3.36	2.96	3.16	2.79	2.82	3.23	2.97	3.55	3.00	2.65
<b>% CO2 &gt; 27</b>	<b>7%</b>	<b>14%</b>	<b>20%</b>	<b>18%</b>	<b>17%</b>	<b>14%</b>	<b>6%</b>	<b>14%</b>	<b>16%</b>	<b>18%</b>	<b>8%</b>	<b>3%</b>



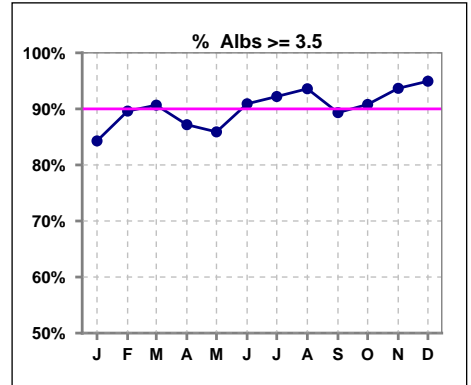
\*Albumin values use BCG method - as of July 2001

**II. NUTRITION**

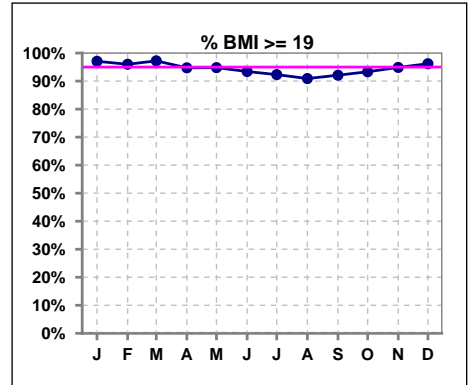
	Jan	Feb	Mar	Apr	May	Jun	Jul	Aug	Sep	Oct	Nov	Dec
# Albumin	70	77	75	78	78	77	77	78	75	76	79	79
# Albumin >= 4.0	37	35	38	38	33	40	42	41	35	37	45	47
Pop. Mean	3.9	3.9	3.9	3.9	3.9	4.0	4.0	4.0	3.9	3.9	4.0	4.0
Std. Deviation	0.33	0.35	0.36	0.37	0.41	0.36	0.33	0.33	0.31	0.36	0.45	0.42
% Alb >= 4.0	53%	45%	51%	49%	42%	52%	55%	53%	47%	49%	57%	59%



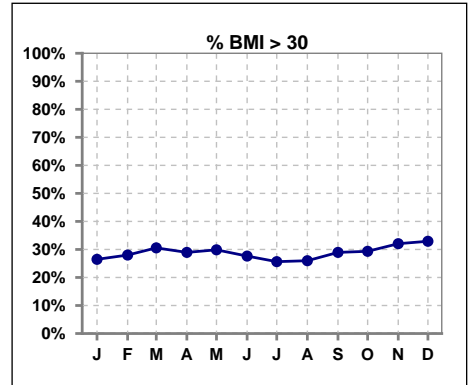
	Jan	Feb	Mar	Apr	May	Jun	Jul	Aug	Sep	Oct	Nov	Dec
# Albumin	70	77	75	78	78	77	77	78	75	76	79	79
# Albumin >= 3.5	59	69	68	68	67	70	71	73	67	69	74	75
Pop. Mean	3.9	3.9	3.9	3.9	3.9	4.0	4.0	4.0	3.9	3.9	4.0	4.0
Std. Deviation	0.33	0.35	0.36	0.37	0.41	0.36	0.33	0.33	0.31	0.36	0.45	0.42
% Alb >= 3.5	84%	90%	91%	87%	86%	91%	92%	94%	89%	91%	94%	95%



	Jan	Feb	Mar	Apr	May	Jun	Jul	Aug	Sep	Oct	Nov	Dec
# BMI	68	75	72	76	77	76	77	77	76	75	78	79
# BMI >= 19	66	72	70	72	73	71	72	70	70	70	74	76
Pop. Mean	26	27	27	27	27	27	27	27	27	27	27	27
Std. Deviation	5.2	6.0	6.7	6.8	6.7	6.6	6.7	6.7	5.9	5.9	6.0	6.6
% BMI >= 19	97%	96%	97%	95%	95%	93%	92%	91%	92%	93%	95%	96%



	Jan	Feb	Mar	Apr	May	Jun	Jul	Aug	Sep	Oct	Nov	Dec
# BMI	68	75	72	76	77	76	77	77	76	75	78	79
# BMI > 30	18	21	22	22	23	21	20	20	22	22	25	26
Pop. Mean	26	27	27	27	27	27	27	27	27	27	27	27
Std. Deviation	5.2	6.0	6.7	6.8	6.7	6.6	6.7	6.7	5.9	5.9	6.0	6.6
% BMI > 30	26%	28%	31%	29%	30%	28%	26%	26%	29%	29%	32%	33%

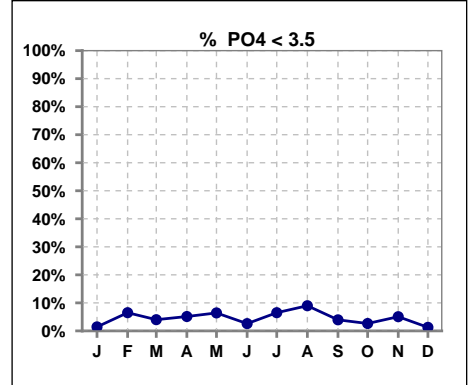


Methodology: a) All labs for 'Adequacy of Dialysis', 'Nutrition', 'Osteodystrophy', 'Anemia' and 'Diabetes' based on last value of month; b) BP's and #L processed are average of all values for month; c) Access data takes last access of month; d) Values for SGA and 'Infection Control' use most recent result.

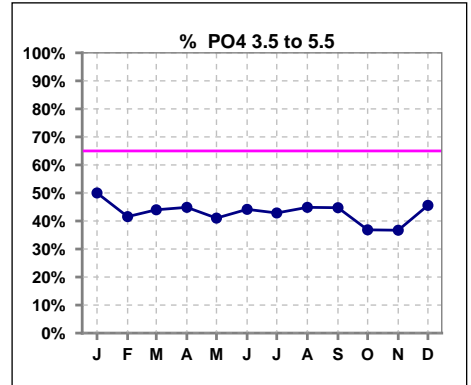
Lab methodology for PTH changed January 2012

**III. OSTEODYSTROPHY**

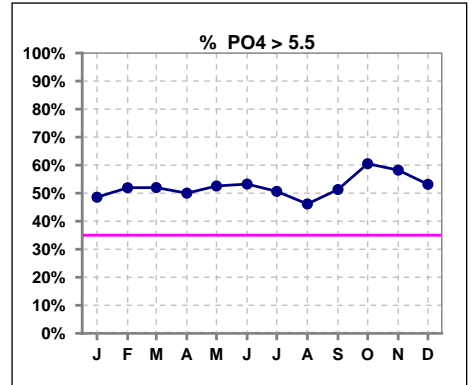
	Jan	Feb	Mar	Apr	May	Jun	Jul	Aug	Sep	Oct	Nov	Dec
# PO4	70	77	75	78	78	77	77	78	76	76	79	79
# PO4 < 3.5	1	5	3	4	5	2	5	7	3	2	4	1
Pop. Mean	5.9	5.8	6.0	5.9	5.9	5.9	6.0	5.5	6.0	6.1	5.8	6.2
Std. Deviation	1.81	1.78	1.79	2.04	1.93	1.71	2.19	1.59	1.92	1.76	1.53	1.80
% PO4 < 3.5	1%	6%	4%	5%	6%	3%	6%	9%	4%	3%	5%	1%



	Jan	Feb	Mar	Apr	May	Jun	Jul	Aug	Sep	Oct	Nov	Dec
# PO4	70	77	75	78	78	77	77	78	76	76	79	79
# PO4 3.5 to 5.5	35	32	33	35	32	34	33	35	34	28	29	36
Pop. Mean	5.9	5.8	6.0	5.9	5.9	5.9	6.0	5.5	6.0	6.1	5.8	6.2
Std. Deviation	1.81	1.78	1.79	2.04	1.93	1.71	2.19	1.59	1.92	1.76	1.53	1.80
% PO4 3.5 to 5.5	50%	42%	44%	45%	41%	44%	43%	45%	45%	37%	37%	46%



	Jan	Feb	Mar	Apr	May	Jun	Jul	Aug	Sep	Oct	Nov	Dec
# PO4	70	77	75	78	78	77	77	78	76	76	79	79
# PO4 > 5.5	34	40	39	39	41	41	39	36	39	46	46	42
Pop. Mean	5.9	5.8	6.0	5.9	5.9	5.9	6.0	5.5	6.0	6.1	5.8	6.2
Std. Deviation	1.81	1.78	1.79	2.04	1.93	1.71	2.19	1.59	1.92	1.76	1.53	1.80
% PO4 > 5.5	49%	52%	52%	50%	53%	53%	51%	46%	51%	61%	58%	53%

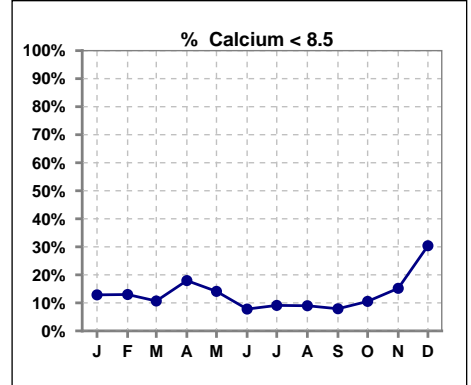


Methodology: a) All labs for 'Adequacy of Dialysis', 'Nutrition', 'Osteodystrophy', 'Anemia' and 'Diabetes' based on last value of month; b) BP's and #L processed are average of all values for month; c) Access data takes last access of month; d) Values for SGA and 'Infection Control' use most recent result.

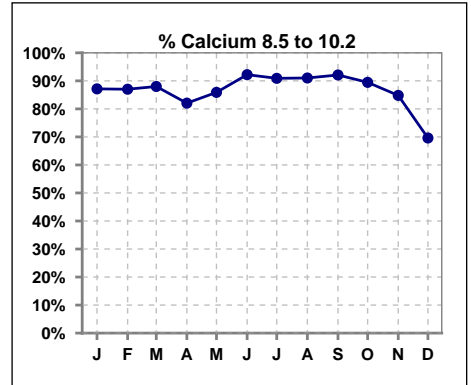
Lab methodology for PTH changed January 2012

**III. OSTEODYSTROPHY - CONT.**

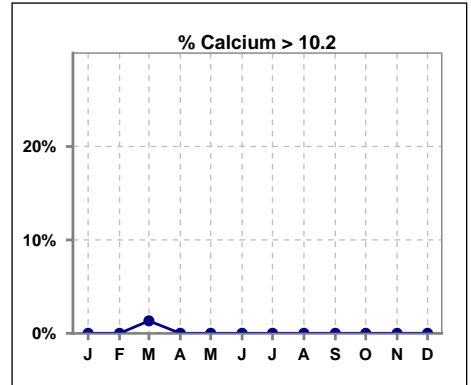
	Jan	Feb	Mar	Apr	May	Jun	Jul	Aug	Sep	Oct	Nov	Dec
# Calcium	70	77	75	78	78	77	77	78	76	76	79	79
# Calcium < 8.5	9	10	8	14	11	6	7	7	6	8	12	24
Pop. Mean	9.2	9.1	9.1	9.1	9.2	9.2	9.2	9.2	9.1	9.2	9.1	8.8
Std. Deviation	0.59	0.59	0.56	0.60	0.59	0.58	0.59	0.56	0.68	0.60	0.59	0.65
<b>% Calcium &lt; 8.5</b>	<b>13%</b>	<b>13%</b>	<b>11%</b>	<b>18%</b>	<b>14%</b>	<b>8%</b>	<b>9%</b>	<b>9%</b>	<b>8%</b>	<b>11%</b>	<b>15%</b>	<b>30%</b>



	Jan	Feb	Mar	Apr	May	Jun	Jul	Aug	Sep	Oct	Nov	Dec
# Calcium	70	77	75	78	78	77	77	78	76	76	79	79
# Calcium 8.5 to 10.2	61	67	66	64	67	71	70	71	70	68	67	55
Pop. Mean	9.2	9.1	9.1	9.1	9.2	9.2	9.2	9.2	9.1	9.2	9.1	8.8
Std. Deviation	0.59	0.59	0.56	0.60	0.59	0.58	0.59	0.56	0.68	0.60	0.59	0.65
<b>% Calcium 8.5 to 10.2</b>	<b>87%</b>	<b>87%</b>	<b>88%</b>	<b>82%</b>	<b>86%</b>	<b>92%</b>	<b>91%</b>	<b>91%</b>	<b>92%</b>	<b>89%</b>	<b>85%</b>	<b>70%</b>



	Jan	Feb	Mar	Apr	May	Jun	Jul	Aug	Sep	Oct	Nov	Dec
# Calcium	70	77	75	78	78	77	77	78	76	76	79	79
# Calcium > 10.2	0	0	1	0	0	0	0	0	0	0	0	0
Pop. Mean	9.2	9.1	9.1	9.1	9.2	9.2	9.2	9.2	9.1	9.2	9.1	8.8
Std. Deviation	0.59	0.59	0.56	0.60	0.59	0.58	0.59	0.56	0.68	0.60	0.59	0.65
<b>% Calcium &gt; 10.2</b>	<b>0%</b>	<b>0%</b>	<b>1%</b>	<b>0%</b>	<b>0%</b>	<b>0%</b>	<b>0%</b>	<b>0%</b>	<b>0%</b>	<b>0%</b>	<b>0%</b>	<b>0%</b>

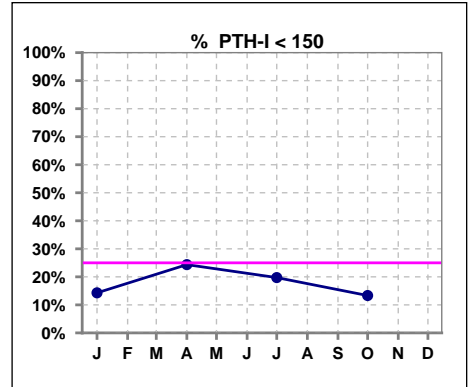


Methodology: a) All labs for 'Adequacy of Dialysis', 'Nutrition', 'Osteodystrophy', 'Anemia' and 'Diabetes' based on last value of month; b) BP's and #L processed are average of all values for month; c) Access data takes last access of month; d) Values for SGA and 'Infection Control' use most recent result.

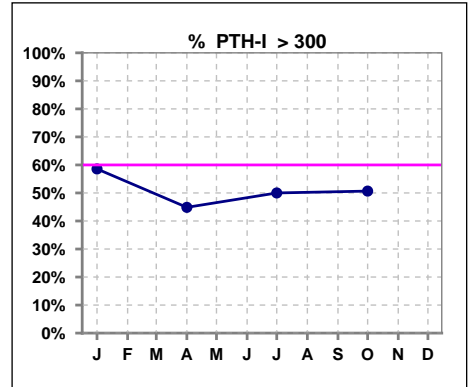
Lab methodology for PTH changed January 2012

**III. OSTEODYSTROPHY - CONT.**

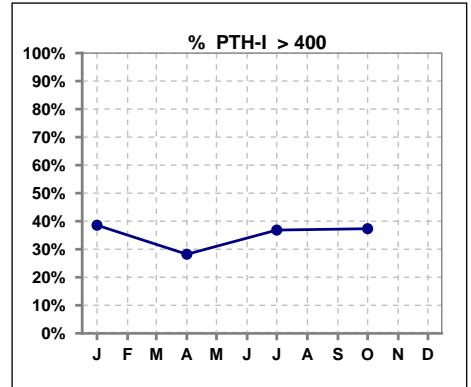
	Jan	Feb	Mar	Apr	May	Jun	Jul	Aug	Sep	Oct	Nov	Dec
# PTH-I	70			78			76			75		
# PTH-I < 150	10			19			15			10		
Pop. Mean	411			350			378			385		
Std. Deviation	306			288			283			293		
% PTH-I < 150	14%			24%			20%			13%		



	Jan	Feb	Mar	Apr	May	Jun	Jul	Aug	Sep	Oct	Nov	Dec
# PTH-I	70			78			76			75		
# PTH-I > 300	41			35			38			38		
Pop. Mean	411			350			378			385		
Std. Deviation	306			288			283			293		
% PTH-I > 300	59%			45%			50%			51%		



	Jan	Feb	Mar	Apr	May	Jun	Jul	Aug	Sep	Oct	Nov	Dec
# PTH-I	70			78			76			75		
# PTH-I > 400	27			22			28			28		
Pop. Mean	411			350			378			385		
Std. Deviation	306			288			283			293		
% PTH-I > 400	39%			28%			37%			37%		

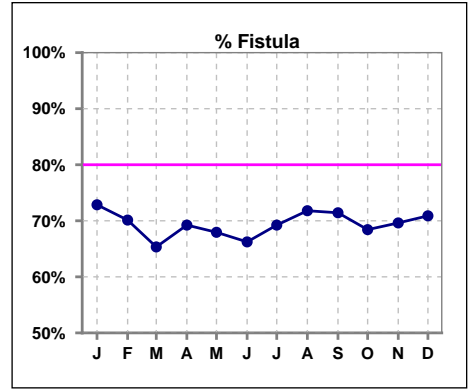


Methodology: a) All labs for 'Adequacy of Dialysis', 'Nutrition', 'Osteodystrophy', 'Anemia' and 'Diabetes' based on last value of month; b) BP's and #L processed are average of all values for month; c) Access data takes last access of month; d) Values for SGA and 'Infection Control' use most recent result.

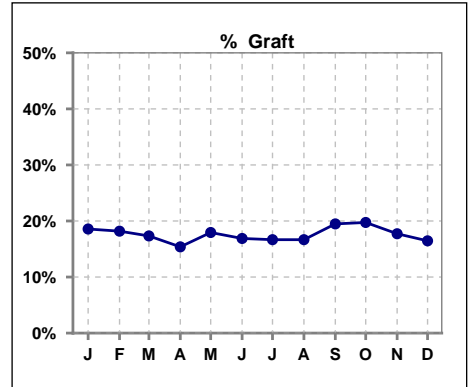


**IV. ACCESS**

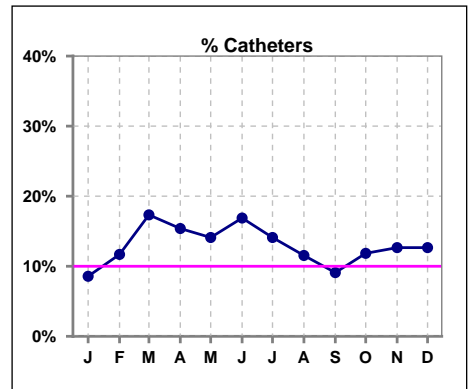
	Jan	Feb	Mar	Apr	May	Jun	Jul	Aug	Sep	Oct	Nov	Dec
# Access	70	77	75	78	78	77	78	78	77	76	79	79
# Fistula	51	54	49	54	53	51	54	56	55	52	55	56
% Fistula	73%	70%	65%	69%	68%	66%	69%	72%	71%	68%	70%	71%



	Jan	Feb	Mar	Apr	May	Jun	Jul	Aug	Sep	Oct	Nov	Dec
# Access	70	77	75	78	78	77	78	78	77	76	79	79
# Graft	13	14	13	12	14	13	13	13	15	15	14	13
% Graft	19%	18%	17%	15%	18%	17%	17%	17%	19%	20%	18%	16%



	Jan	Feb	Mar	Apr	May	Jun	Jul	Aug	Sep	Oct	Nov	Dec
# Access	70	77	75	78	78	77	78	78	77	76	79	79
# Catheters	6	9	13	12	11	13	11	9	7	9	10	10
% Catheters	9%	12%	17%	15%	14%	17%	14%	12%	9%	12%	13%	13%



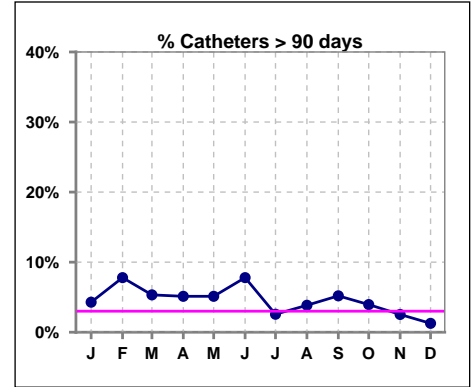
Methodology: a) All labs for 'Adequacy of Dialysis', 'Nutrition', 'Osteodystrophy', 'Anemia' and 'Diabetes' based on last value of month; b) BP's and #L processed are average of all values for month; c) Access data takes last access of month; d) Values for SGA and 'Infection Control' use most recent result.

**IV. ACCESS - CONT.**

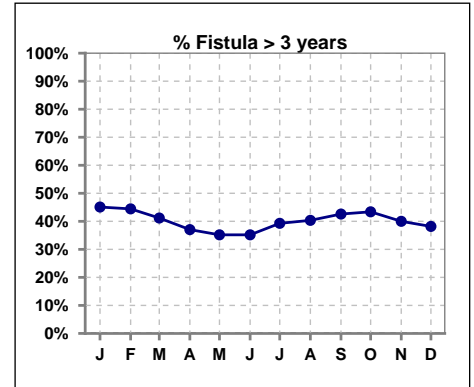
**Catheters > 90 days**

	Jan	Feb	Mar	Apr	May	Jun	Jul	Aug	Sep	Oct	Nov	Dec
# Access	70	77	75	78	78	77	78	78	77	76	79	79
# Catheters	3	6	4	4	4	6	2	3	4	3	2	1
<b>% Catheters</b>	<b>4%</b>	<b>8%</b>	<b>5%</b>	<b>5%</b>	<b>5%</b>	<b>8%</b>	<b>3%</b>	<b>4%</b>	<b>5%</b>	<b>4%</b>	<b>3%</b>	<b>1%</b>

Definition: Catheter in use on last treatment of the month



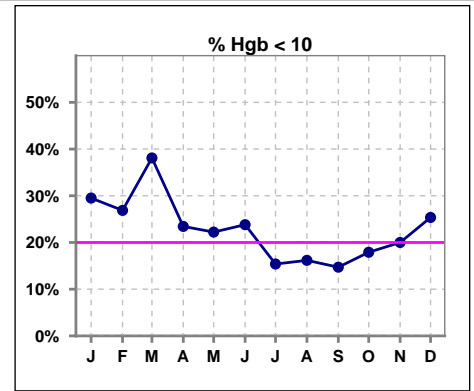
	Jan	Feb	Mar	Apr	May	Jun	Jul	Aug	Sep	Oct	Nov	Dec
# Fistula	51	54	51	54	54	54	56	57	54	53	55	55
# Fistula > 3 yrs	23	24	21	20	19	19	22	23	23	23	22	21
<b>% Fistula &gt; 3 yrs</b>	<b>45%</b>	<b>44%</b>	<b>41%</b>	<b>37%</b>	<b>35%</b>	<b>35%</b>	<b>39%</b>	<b>40%</b>	<b>43%</b>	<b>43%</b>	<b>40%</b>	<b>38%</b>



**V. ANEMIA**

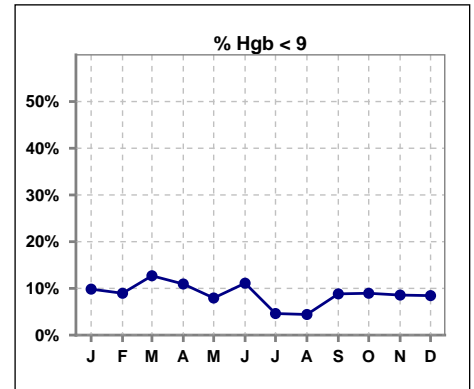
	Jan	Feb	Mar	Apr	May	Jun	Jul	Aug	Sep	Oct	Nov	Dec
# Hgb	61	67	63	64	63	63	65	68	68	67	70	71
# Hgb < 10	18	18	24	15	14	15	10	11	10	12	14	18
Pop. Mean	10.4	10.6	10.3	10.4	10.7	10.5	10.9	10.9	10.7	10.8	10.7	10.7
Std. Deviation	1.2	1.3	1.1	1.1	1.0	1.2	1.0	0.9	1.2	1.1	1.2	1.1
% Hgb < 10	30%	27%	38%	23%	22%	24%	15%	16%	15%	18%	20%	25%

Note: Excludes patients who received no ESA in month.



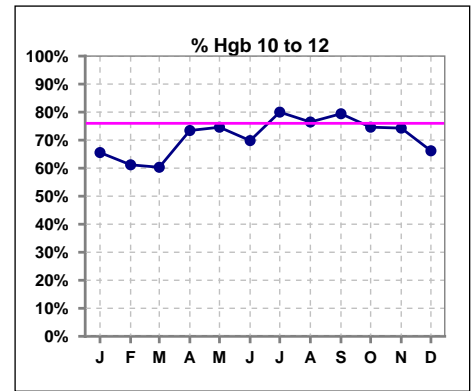
	Jan	Feb	Mar	Apr	May	Jun	Jul	Aug	Sep	Oct	Nov	Dec
# Hgb	61	67	63	64	63	63	65	68	68	67	70	71
# Hgb < 9	6	6	8	7	5	7	3	3	6	6	6	6
Pop. Mean	10.4	10.6	10.3	10.4	10.7	10.5	10.9	10.9	10.7	10.8	10.7	10.7
Std. Deviation	1.2	1.3	1.1	1.1	1.0	1.2	1.0	0.9	1.2	1.1	1.2	1.1
% Hgb < 9	10%	9%	13%	11%	8%	11%	5%	4%	9%	9%	9%	8%

Note: Excludes patients who received no ESA in month.



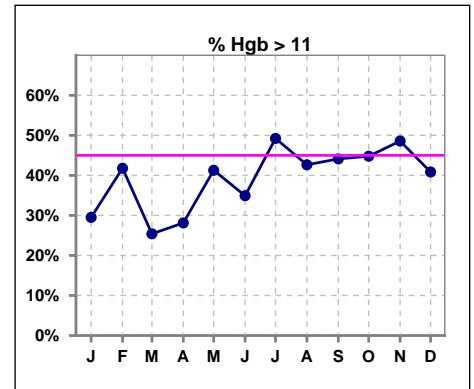
	Jan	Feb	Mar	Apr	May	Jun	Jul	Aug	Sep	Oct	Nov	Dec
# Hgb	61	67	63	64	63	63	65	68	68	67	70	71
# Hgb 10 to 12	40	41	38	47	47	44	52	52	54	50	52	47
Pop. Mean	10.4	10.6	10.3	10.4	10.7	10.5	10.9	10.9	10.7	10.8	10.7	10.7
Std. Deviation	1.2	1.3	1.1	1.1	1.0	1.2	1.0	0.9	1.2	1.1	1.2	1.1
% Hgb 10 to 12	66%	61%	60%	73%	75%	70%	80%	76%	79%	75%	74%	66%

Note: Excludes patients who received no ESA in month.



	Jan	Feb	Mar	Apr	May	Jun	Jul	Aug	Sep	Oct	Nov	Dec
# Hgb	61	67	63	64	63	63	65	68	68	67	70	71
# Hgb > 11	18	28	16	18	26	22	32	29	30	30	34	29
Pop. Mean	10.4	10.6	10.3	10.4	10.7	10.5	10.9	10.9	10.7	10.8	10.7	10.7
Std. Deviation	1.2	1.3	1.1	1.1	1.0	1.2	1.0	0.9	1.2	1.1	1.2	1.1
% Hgb > 11	30%	42%	25%	28%	41%	35%	49%	43%	44%	45%	49%	41%

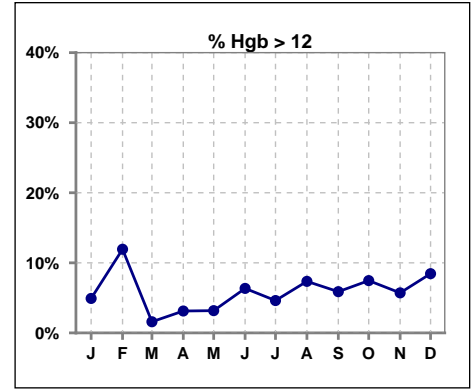
Note: Excludes patients who received no ESA in month.



**V. ANEMIA - CONT.**

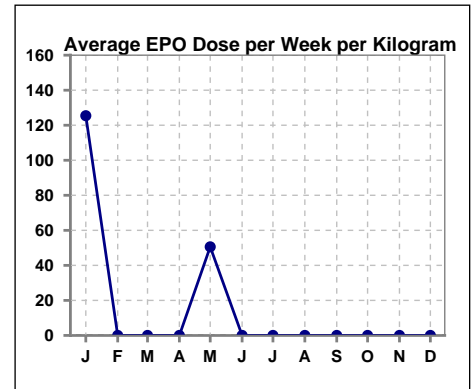
	Jan	Feb	Mar	Apr	May	Jun	Jul	Aug	Sep	Oct	Nov	Dec
# Hgb	61	67	63	64	63	63	65	68	68	67	70	71
# Hgb > 12	3	8	1	2	2	4	3	5	4	5	4	6
Pop. Mean	10.4	10.6	10.3	10.4	10.7	10.5	10.9	10.9	10.7	10.8	10.7	10.7
Std. Deviation	1.2	1.3	1.1	1.1	1.0	1.2	1.0	0.9	1.2	1.1	1.2	1.1
% Hgb > 12	5%	12%	2%	3%	3%	6%	5%	7%	6%	7%	6%	8%

Note: Excludes patients who received no ESA in month.



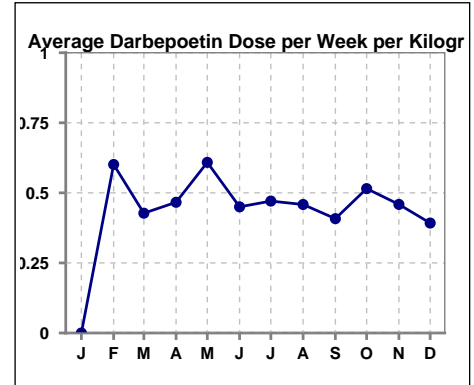
**Average EPO Dose per Week per Kilogram**

	Jan	Feb	Mar	Apr	May	Jun	Jul	Aug	Sep	Oct	Nov	Dec
# Average EPO	125.4	0	0	0	50.6	0	0	0	0	0	0	0



**Average Darbepoetin Dose per Week per Kilogram**

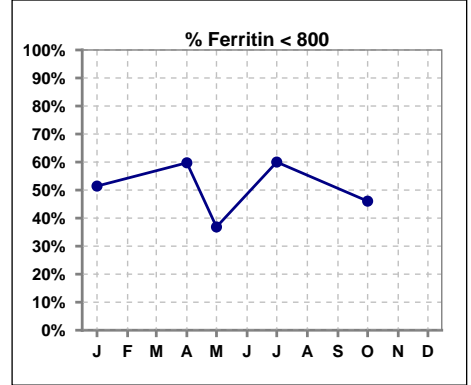
	Jan	Feb	Mar	Apr	May	Jun	Jul	Aug	Sep	Oct	Nov	Dec
# Average Darbepoetin	0	.6	.4	.5	.6	.5	.5	.5	.4	.5	.5	.4



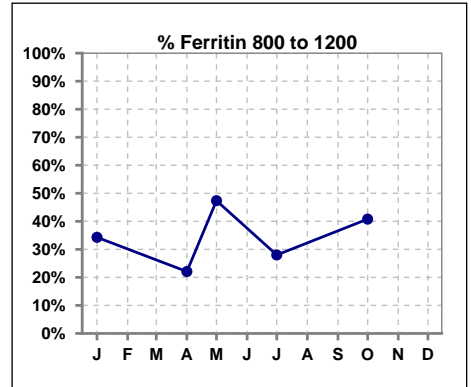
**V. ANEMIA - CONT.**

**Iron Profile**

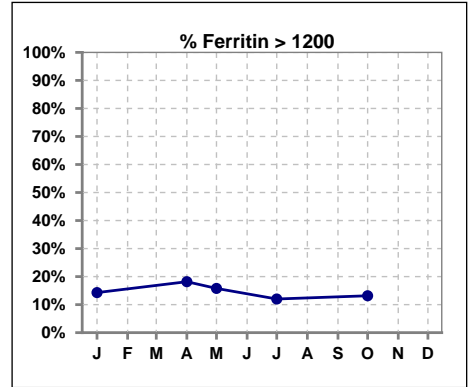
	Jan	Feb	Mar	Apr	May	Jun	Jul	Aug	Sep	Oct	Nov	Dec
# Ferritin	70			77	19		75			76		
# Ferritin < 800	36			46	7		45			35		
Pop. Mean	787			814	970		763			824		
Std. Deviation	414			457	534		381			441		
<b>% Ferritin &lt; 800</b>	<b>51%</b>			<b>60%</b>	<b>37%</b>		<b>60%</b>			<b>46%</b>		



	Jan	Feb	Mar	Apr	May	Jun	Jul	Aug	Sep	Oct	Nov	Dec
# Ferritin	70			77	19		75			76		
# Ferritin 800 to 1200	24			17	9		21			31		
Pop. Mean	787			814	970		763			824		
Std. Deviation	414			457	534		381			441		
<b>% Ferritin 800 to 1200</b>	<b>34%</b>			<b>22%</b>	<b>47%</b>		<b>28%</b>			<b>41%</b>		

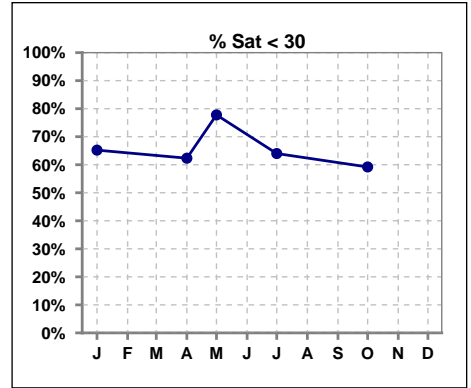


	Jan	Feb	Mar	Apr	May	Jun	Jul	Aug	Sep	Oct	Nov	Dec
# Ferritin	70			77	19		75			76		
# Ferritin > 1200	10			14	3		9			10		
Pop. Mean	787			814	970		763			824		
Std. Deviation	414			457	534		381			441		
<b>% Ferritin &gt; 1200</b>	<b>14%</b>			<b>18%</b>	<b>16%</b>		<b>12%</b>			<b>13%</b>		

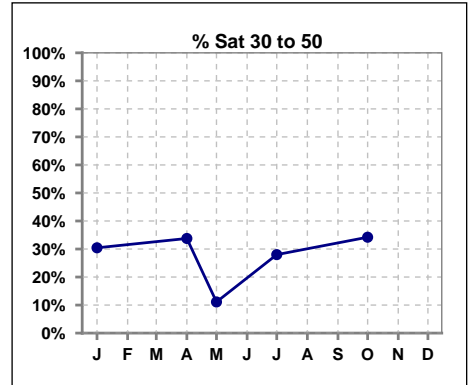


**V. ANEMIA - CONT.**

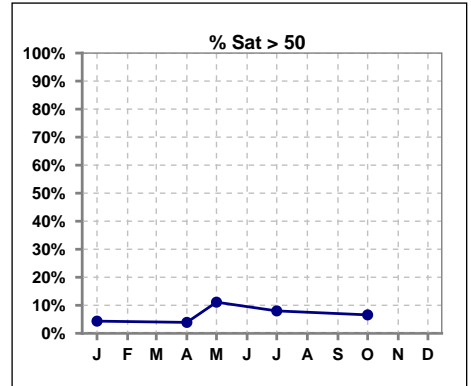
	Jan	Feb	Mar	Apr	May	Jun	Jul	Aug	Sep	Oct	Nov	Dec
# % Sat	69			77	18		75			76		
# % Sat < 30	45			48	14		48			45		
Pop. Mean	27			28	25		27			29		
Std. Deviation	15			13	12		14			13		
<b>% % Sat &lt; 30</b>	<b>65%</b>			<b>62%</b>	<b>78%</b>		<b>64%</b>			<b>59%</b>		



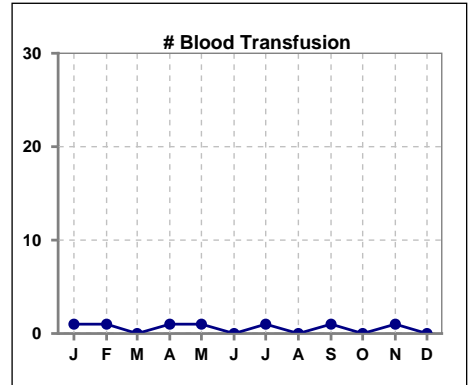
	Jan	Feb	Mar	Apr	May	Jun	Jul	Aug	Sep	Oct	Nov	Dec
# % Sat	69			77	18		75			76		
# % Sat 30 to 50	21			26	2		21			26		
Pop. Mean	27			28	25		27			29		
Std. Deviation	15			13	12		14			13		
<b>% % Sat 30 to 50</b>	<b>30%</b>			<b>34%</b>	<b>11%</b>		<b>28%</b>			<b>34%</b>		



	Jan	Feb	Mar	Apr	May	Jun	Jul	Aug	Sep	Oct	Nov	Dec
# % Sat	69			77	18		75			76		
# % Sat > 50	3			3	2		6			5		
Pop. Mean	27			28	25		27			29		
Std. Deviation	15			13	12		14			13		
<b>% % Sat &gt; 50</b>	<b>4%</b>			<b>4%</b>	<b>11%</b>		<b>8%</b>			<b>7%</b>		



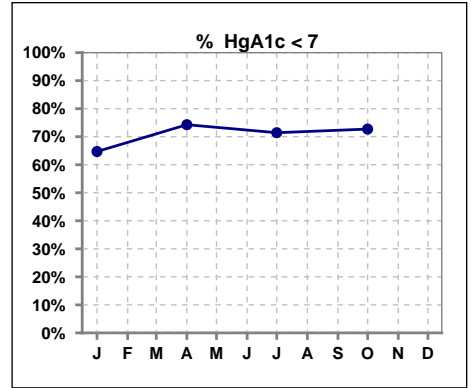
	Jan	Feb	Mar	Apr	May	Jun	Jul	Aug	Sep	Oct	Nov	Dec
# Patient	72	78	76	78	78	78	79	79	79	77	79	79
# Blood Transfusion	1	1	0	1	1	0	1	0	1	0	1	0



Methodology: a) All labs for 'Adequacy of Dialysis', 'Nutrition', 'Osteodystrophy', 'Anemia' and 'Diabetes' based on last value of month; b) BP's and #L processed are average of all values for month; c) Access data takes last access of month; d) Values for SGA and 'Infection Control' use most recent result.

**VI. Diabetes**

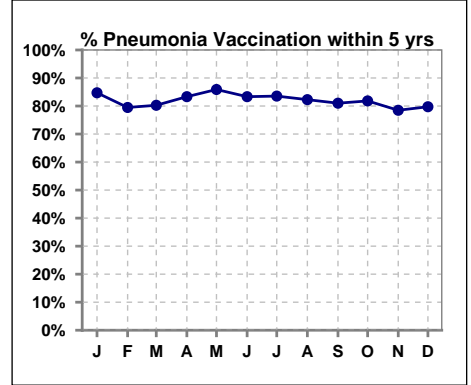
	Jan	Feb	Mar	Apr	May	Jun	Jul	Aug	Sep	Oct	Nov	Dec
# HgA1c	34			35			28			33		
# HgA1c < 7	22			26			20			24		
Pop. Mean	6.6			6.5			6.3			6.5		
Std. Deviation	1.18			1.25			0.92			1.24		
<b>% HgA1c &lt; 7</b>	<b>65%</b>			<b>74%</b>			<b>71%</b>			<b>73%</b>		



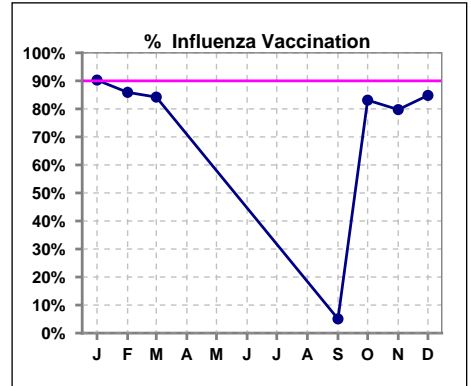
**VII. Infection Control**

**Pneumonia vaccination within the past five years**

	Jan	Feb	Mar	Apr	May	Jun	Jul	Aug	Sep	Oct	Nov	Dec
# Patient	72	78	76	78	78	78	79	79	79	77	79	79
# Pneumonia	61	62	61	65	67	65	66	65	64	63	62	63
<b>% Pneumonia</b>	<b>85%</b>	<b>79%</b>	<b>80%</b>	<b>83%</b>	<b>86%</b>	<b>83%</b>	<b>84%</b>	<b>82%</b>	<b>81%</b>	<b>82%</b>	<b>78%</b>	<b>80%</b>



	Jan	Feb	Mar	Apr	May	Jun	Jul	Aug	Sep	Oct	Nov	Dec
# Patient	72	78	76						79	77	79	79
# Influenza	65	67	64						4	64	63	67
<b>% Influenza</b>	<b>90%</b>	<b>86%</b>	<b>84%</b>						<b>5%</b>	<b>83%</b>	<b>80%</b>	<b>85%</b>

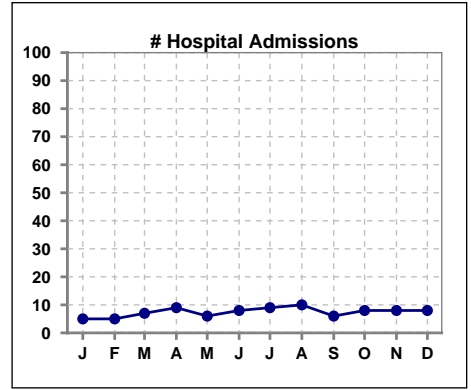


Methodology: a) All labs for 'Adequacy of Dialysis', 'Nutrition', 'Osteodystrophy', 'Anemia' and 'Diabetes' based on last value of month; b) BP's and #L processed are average of all values for month; c) Access data takes last access of month; d) Values for SGA and 'Infection Control' use most recent result.

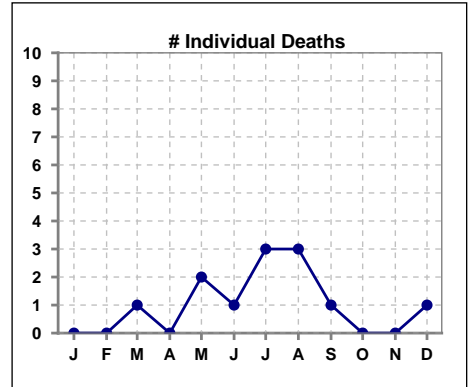


**VIII. Outcome measures**

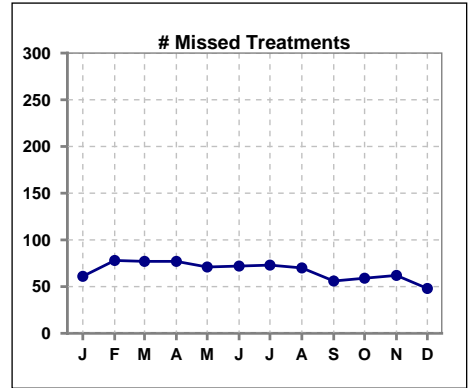
	Jan	Feb	Mar	Apr	May	Jun	Jul	Aug	Sep	Oct	Nov	Dec
<b># Patient</b>	72	78	76	78	78	78	79	79	79	77	79	79
<b># Hospital Admissions</b>	5	5	7	9	6	8	9	10	6	8	8	8



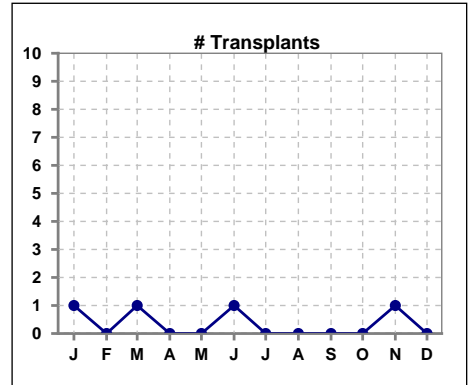
	Jan	Feb	Mar	Apr	May	Jun	Jul	Aug	Sep	Oct	Nov	Dec
<b># Patient</b>	72	78	76	78	78	78	79	79	79	77	79	79
<b># Individual Deaths</b>	0	0	1	0	2	1	3	3	1	0	0	1



	Jan	Feb	Mar	Apr	May	Jun	Jul	Aug	Sep	Oct	Nov	Dec
<b># Patient</b>	72	78	76	78	78	78	79	79	79	77	79	79
<b># Missed Treatments</b>	61	78	77	77	71	72	73	70	56	59	62	48



	Jan	Feb	Mar	Apr	May	Jun	Jul	Aug	Sep	Oct	Nov	Dec
<b># Patient</b>	72	78	76	78	78	78	79	79	79	77	79	79
<b># Transplants</b>	1	0	1	0	0	1	0	0	0	0	1	0



Methodology: a) All labs for 'Adequacy of Dialysis', 'Nutrition', 'Osteodystrophy', 'Anemia' and 'Diabetes' based on last value of month; b) BP's and #L processed are average of all values for month; c) Access data takes last access of month; d) Values for SGA and 'Infection Control' use most recent result.