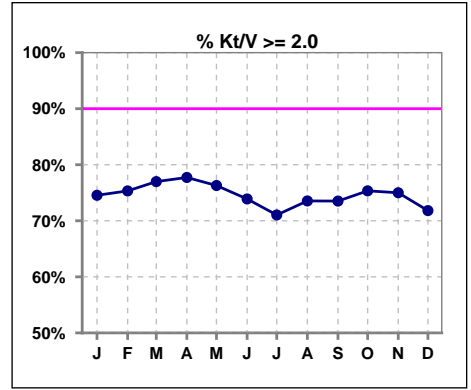
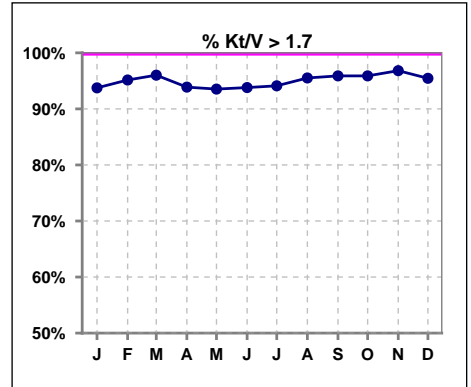


I. ADEQUACY OF DIALYSIS

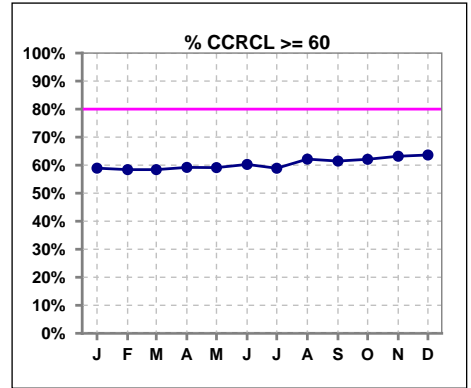
	Jan	Feb	Mar	Apr	May	Jun	Jul	Aug	Sep	Oct	Nov	Dec
# Kt/V - CA/CC PD	224	227	226	229	232	226	221	223	219	219	220	220
# Kt/V >= 2.0	167	171	174	178	177	167	157	164	161	165	165	158
Pop. Mean	2.31	2.34	2.34	2.33	2.36	2.34	2.34	2.37	2.36	2.37	2.37	2.31
Std. Deviation	0.48	0.54	0.51	0.53	0.56	0.55	0.56	0.55	0.57	0.53	0.52	0.52
% Kt/V >= 2.0	75%	75%	77%	78%	76%	74%	71%	74%	74%	75%	75%	72%



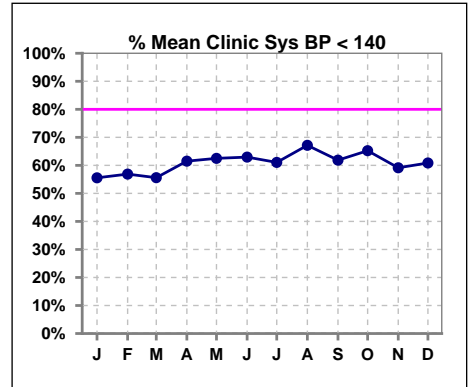
	Jan	Feb	Mar	Apr	May	Jun	Jul	Aug	Sep	Oct	Nov	Dec
# Kt/V - CA/CC PD	224	227	226	229	232	226	221	223	219	219	220	220
# Kt/V >= 1.7	210	216	217	215	217	212	208	213	210	210	213	210
Pop. Mean	2.31	2.34	2.34	2.33	2.36	2.34	2.34	2.37	2.36	2.37	2.37	2.31
Std. Deviation	0.48	0.54	0.51	0.53	0.56	0.55	0.56	0.55	0.57	0.53	0.52	0.52
% Kt/V >= 1.7	94%	95%	96%	94%	94%	94%	94%	96%	96%	96%	97%	95%



	Jan	Feb	Mar	Apr	May	Jun	Jul	Aug	Sep	Oct	Nov	Dec
# CRCL CA/CC PD	224	226	226	228	230	224	219	222	218	219	220	220
# CCRCL >= 60	132	132	132	135	136	135	129	138	134	136	139	140
Pop. Mean	73.49	73.22	74.33	73.83	73.84	73.68	73.57	75.05	74.24	75.18	75.13	73.36
Std. Deviation	28.03	28.16	28.85	28.36	28.15	27.22	26.95	28.47	28.65	29.92	29.75	28.33
% CCRCL >= 60	59%	58%	58%	59%	59%	60%	59%	62%	61%	62%	63%	64%



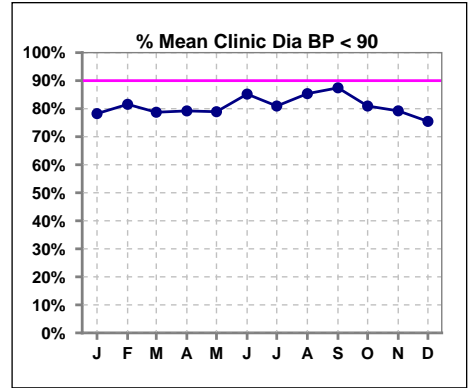
	Jan	Feb	Mar	Apr	May	Jun	Jul	Aug	Sep	Oct	Nov	Dec
# Mean Clinic Sys BP	216	218	223	226	224	224	208	204	215	210	208	212
# Sys BP < 140	120	124	124	139	140	141	127	137	133	137	123	129
Pop. Mean	137	137	139	137	135	134	134	133	135	133	136	137
Std. Deviation	25.2	25.1	24.6	24.6	23.0	24.0	24.5	24.1	23.6	22.4	23.4	23.7
% Sys BP <140	56%	57%	56%	62%	63%	63%	61%	67%	62%	65%	59%	61%



Methodology: a) Kt/V, CRCL and nPNa values are 4 month rolling mean of last value for each month, all other report lab results are based on last value of month; b) BP's are average of all values for month.

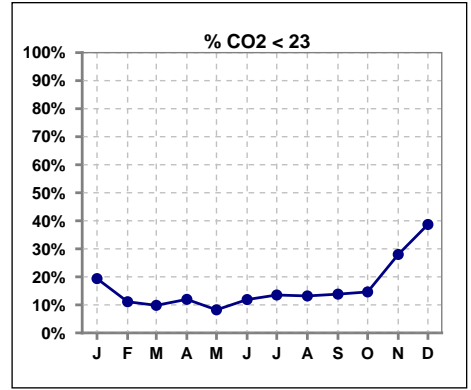
I. ADEQUACY OF DIALYSIS - CONT.

	Jan	Feb	Mar	Apr	May	Jun	Jul	Aug	Sep	Oct	Nov	Dec
# Mean Clinic Dia BP	216	217	221	226	223	223	210	205	215	210	207	212
# Dia BP < 90	169	177	174	179	176	190	170	175	188	170	164	160
Pop. Mean	79	79	79	78	78	77	78	77	78	78	80	79
Std. Deviation	13.5	13.0	13.6	13.1	14.3	12.5	12.9	13.1	13.0	13.5	13.6	14.4
% Dia BP < 90	78%	82%	79%	79%	79%	85%	81%	85%	87%	81%	79%	75%

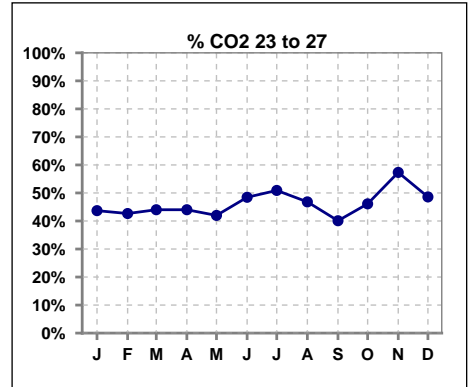


I. ADEQUACY OF DIALYSIS - CONT.

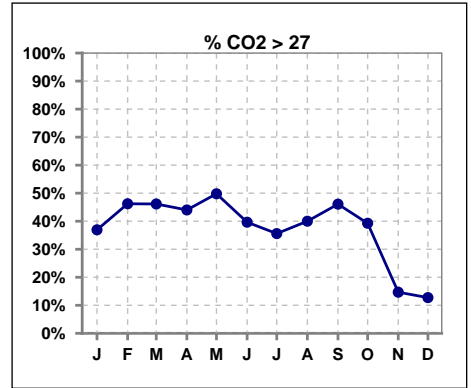
	Jan	Feb	Mar	Apr	May	Jun	Jul	Aug	Sep	Oct	Nov	Dec
# CO2	222	225	234	234	231	227	222	220	217	219	218	212
# CO2 < 23	43	25	23	28	19	27	30	29	30	32	61	82
Pop. Mean	26	27	27	27	27	26	26	26	27	26	24	23
Std. Deviation	3.65	3.69	3.78	3.75	3.46	3.37	3.20	3.35	3.69	3.56	3.30	3.73
% CO2 < 23	19%	11%	10%	12%	8%	12%	14%	13%	14%	15%	28%	39%



	Jan	Feb	Mar	Apr	May	Jun	Jul	Aug	Sep	Oct	Nov	Dec
# CO2	222	225	234	234	231	227	222	220	217	219	218	212
# CO2 23 to 27	97	96	103	103	97	110	113	103	87	101	125	103
Pop. Mean	26	27	27	27	27	26	26	26	27	26	24	23
Std. Deviation	3.65	3.69	3.78	3.75	3.46	3.37	3.20	3.35	3.69	3.56	3.30	3.73
% CO2 23 to 27	44%	43%	44%	44%	42%	48%	51%	47%	40%	46%	57%	49%



	Jan	Feb	Mar	Apr	May	Jun	Jul	Aug	Sep	Oct	Nov	Dec
# CO2	222	225	234	234	231	227	222	220	217	219	218	212
# CO2 > 27	82	104	108	103	115	90	79	88	100	86	32	27
Pop. Mean	26	27	27	27	27	26	26	26	27	26	24	23
Std. Deviation	3.65	3.69	3.78	3.75	3.46	3.37	3.20	3.35	3.69	3.56	3.30	3.73
% CO2 > 27	37%	46%	46%	44%	50%	40%	36%	40%	46%	39%	15%	13%

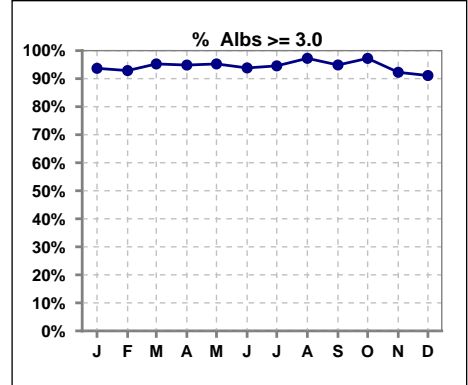


Northwest Kidney Centers - Home Peritoneal Dialysis
Quality Assurance Reports
 Through period ending Dec. 31, 2016

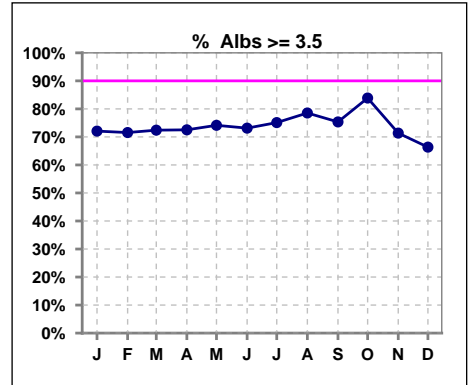
*Albumin values use BCG method - as of July 2001

II. NUTRITION

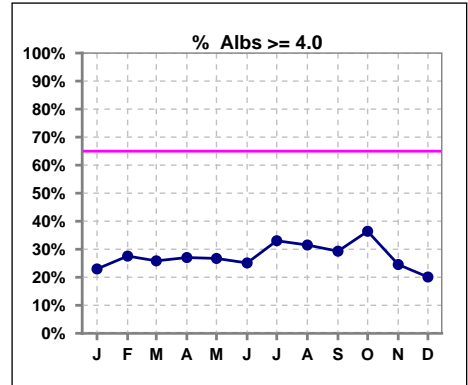
	Jan	Feb	Mar	Apr	May	Jun	Jul	Aug	Sep	Oct	Nov	Dec
# Albumin	222	225	232	233	232	227	221	219	215	217	220	214
# Albumin >= 3.0	208	209	221	221	221	213	209	213	204	211	203	195
Pop. Mean	3.7	3.7	3.7	3.7	3.7	3.7	3.7	3.8	3.7	3.8	3.6	3.6
Std. Deviation	0.40	0.43	0.45	0.43	0.45	0.43	0.43	0.39	0.40	0.40	0.43	0.46
% Alb >= 3.0	94%	93%	95%	95%	95%	94%	95%	97%	95%	97%	92%	91%



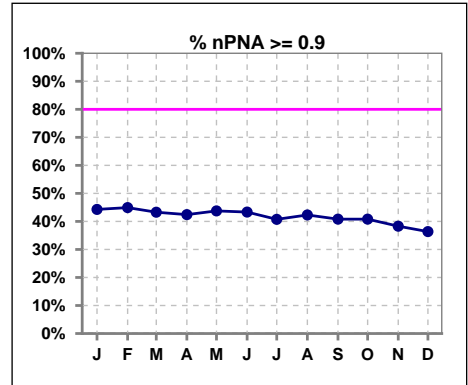
	Jan	Feb	Mar	Apr	May	Jun	Jul	Aug	Sep	Oct	Nov	Dec
# Albumin	222	225	232	233	232	227	221	219	215	217	220	214
# Albumin >= 3.5	160	161	168	169	172	166	166	172	162	182	157	142
Pop. Mean	3.7	3.7	3.7	3.7	3.7	3.7	3.7	3.8	3.7	3.8	3.6	3.6
Std. Deviation	0.40	0.43	0.45	0.43	0.45	0.43	0.43	0.39	0.40	0.40	0.43	0.46
% Alb >= 3.5	72%	72%	72%	73%	74%	73%	75%	79%	75%	84%	71%	66%



	Jan	Feb	Mar	Apr	May	Jun	Jul	Aug	Sep	Oct	Nov	Dec
# Albumin	222	225	232	233	232	227	221	219	215	217	220	214
# Albumin >= 4.0	51	62	60	63	62	57	73	69	63	79	54	43
Pop. Mean	3.7	3.7	3.7	3.7	3.7	3.7	3.7	3.8	3.7	3.8	3.6	3.6
Std. Deviation	0.40	0.43	0.45	0.43	0.45	0.43	0.43	0.39	0.40	0.40	0.43	0.46
% Alb >= 4.0	23%	28%	26%	27%	27%	25%	33%	32%	29%	36%	25%	20%



	Jan	Feb	Mar	Apr	May	Jun	Jul	Aug	Sep	Oct	Nov	Dec
# nPNA	70	69	67	66	64	60	54	52	49	49	47	44
# nPNA >= 0.9	31	31	29	28	28	26	22	22	20	20	18	16
Pop. Mean	0.9	0.9	0.9	0.9	0.9	0.9	0.9	0.9	0.9	0.9	0.9	0.9
Std. Deviation	0.28	0.28	0.28	0.28	0.28	0.29	0.27	0.27	0.28	0.28	0.27	0.27
% nPNA >= 0.9	44%	45%	43%	42%	44%	43%	41%	42%	41%	41%	38%	36%

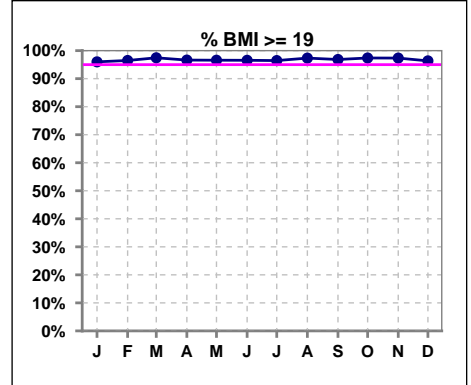


Methodology: a) KtV, CRCL and nPNa values are 4 month rolling mean of last value for each month, all other report lab results are based on last value of month; b) BP's are average of all values for month.

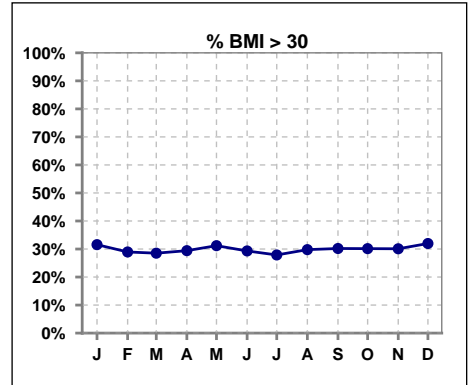
*Albumin values use BCG method - as of July 2001

II. NUTRITION - CONT.

	Jan	Feb	Mar	Apr	May	Jun	Jul	Aug	Sep	Oct	Nov	Dec
# BMI	225	228	235	238	234	232	226	225	222	229	226	219
# BMI >= 19	216	220	229	230	226	224	218	219	215	223	220	211
Pop. Mean	28	28	28	28	28	28	28	28	28	28	28	28
Std. Deviation	7.1	7.1	6.9	7.0	7.2	6.9	6.8	7.0	6.9	6.8	7.0	7.0
% BMI >= 19	96%	96%	97%	97%	97%	97%	96%	97%	97%	97%	97%	96%



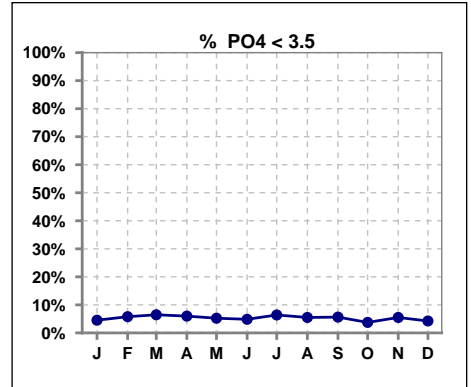
	Jan	Feb	Mar	Apr	May	Jun	Jul	Aug	Sep	Oct	Nov	Dec
# BMI	225	228	235	238	234	232	226	225	222	229	226	219
# BMI > 30	71	66	67	70	73	68	63	67	67	69	68	70
Pop. Mean	28	28	28	28	28	28	28	28	28	28	28	28
Std. Deviation	7.1	7.1	6.9	7.0	7.2	6.9	6.8	7.0	6.9	6.8	7.0	7.0
% BMI > 30	32%	29%	29%	29%	31%	29%	28%	30%	30%	30%	30%	32%



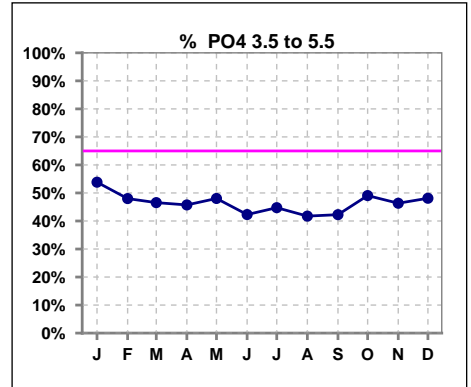
Lab methodology for PTH changed January 2012

III. OSTEODYSTROPHY

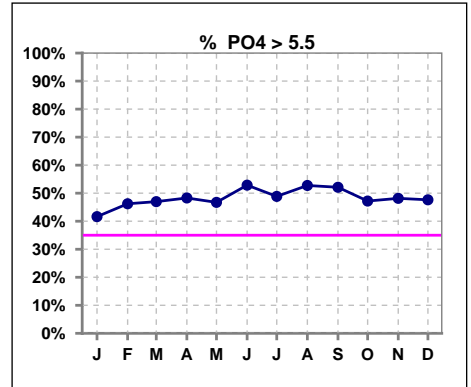
	Jan	Feb	Mar	Apr	May	Jun	Jul	Aug	Sep	Oct	Nov	Dec
# PO4	221	225	232	234	229	227	219	218	213	214	218	212
# PO4 < 3.5	10	13	15	14	12	11	14	12	12	8	12	9
Pop. Mean	5.5	5.6	5.6	5.8	5.8	5.8	5.7	5.8	5.7	5.6	5.7	5.7
Std. Deviation	1.50	1.67	1.56	1.90	1.77	1.63	1.67	1.72	1.59	1.48	1.55	1.60
% PO4 < 3.5	5%	6%	6%	6%	5%	5%	6%	6%	6%	4%	6%	4%



	Jan	Feb	Mar	Apr	May	Jun	Jul	Aug	Sep	Oct	Nov	Dec
# PO4	221	225	232	234	229	227	219	218	213	214	218	212
# PO4 3.5 to 5.5	119	108	108	107	110	96	98	91	90	105	101	102
Pop. Mean	5.5	5.6	5.6	5.8	5.8	5.8	5.7	5.8	5.7	5.6	5.7	5.7
Std. Deviation	1.50	1.67	1.56	1.90	1.77	1.63	1.67	1.72	1.59	1.48	1.55	1.60
% PO4 3.5 to 5.5	54%	48%	47%	46%	48%	42%	45%	42%	42%	49%	46%	48%



	Jan	Feb	Mar	Apr	May	Jun	Jul	Aug	Sep	Oct	Nov	Dec
# PO4	221	225	232	234	229	227	219	218	213	214	218	212
# PO4 > 5.5	92	104	109	113	107	120	107	115	111	101	105	101
Pop. Mean	5.5	5.6	5.6	5.8	5.8	5.8	5.7	5.8	5.7	5.6	5.7	5.7
Std. Deviation	1.50	1.67	1.56	1.90	1.77	1.63	1.67	1.72	1.59	1.48	1.55	1.60
% PO4 > 5.5	42%	46%	47%	48%	47%	53%	49%	53%	52%	47%	48%	48%

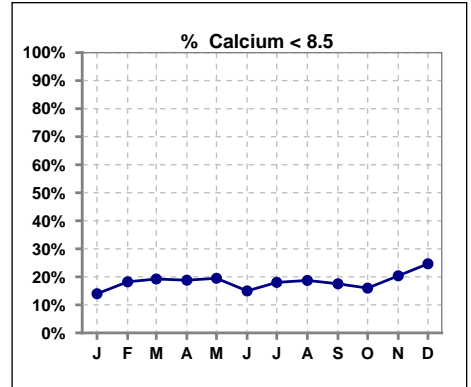


Methodology: a) Kt/V, CRCL and nPNa values are 4 month rolling mean of last value for each month, all other report lab results are based on last value of month; b) BP's are average of all values for month.

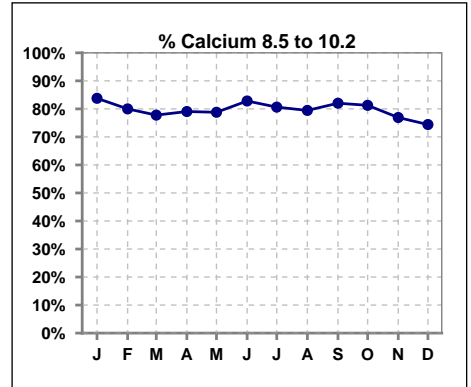
Lab methodology for PTH changed January 2012

III. OSTEODYSTROPHY - CONT.

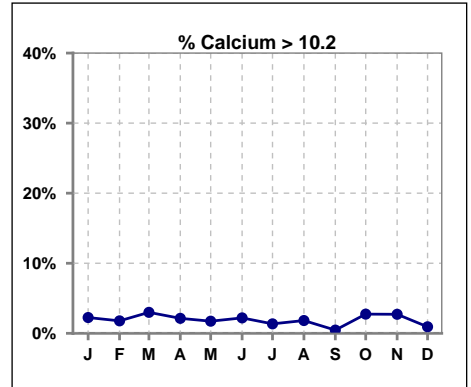
	Jan	Feb	Mar	Apr	May	Jun	Jul	Aug	Sep	Oct	Nov	Dec
# Calcium	222	225	234	234	231	227	222	219	217	219	221	215
# Calcium < 8.5	31	41	45	44	45	34	40	41	38	35	45	53
Pop. Mean	9.2	9.1	9.1	9.1	9.1	9.1	9.1	9.0	9.0	9.1	9.1	8.9
Std. Deviation	0.70	0.74	0.79	0.71	0.72	0.73	0.72	0.70	0.67	0.72	0.70	0.74
% Calcium < 8.5	14%	18%	19%	19%	19%	15%	18%	19%	18%	16%	20%	25%



	Jan	Feb	Mar	Apr	May	Jun	Jul	Aug	Sep	Oct	Nov	Dec
# Calcium	222	225	234	234	231	227	222	219	217	219	221	215
# Calcium 8.5 to 10.2	186	180	182	185	182	188	179	174	178	178	170	160
Pop. Mean	9.2	9.1	9.1	9.1	9.1	9.1	9.1	9.0	9.0	9.1	9.1	8.9
Std. Deviation	0.70	0.74	0.79	0.71	0.72	0.73	0.72	0.70	0.67	0.72	0.70	0.74
% Calcium 8.5 to 10.2	84%	80%	78%	79%	79%	83%	81%	79%	82%	81%	77%	74%



	Jan	Feb	Mar	Apr	May	Jun	Jul	Aug	Sep	Oct	Nov	Dec
# Calcium	222	225	234	234	231	227	222	219	217	219	221	215
# Calcium > 10.2	5	4	7	5	4	5	3	4	1	6	6	2
Pop. Mean	9.2	9.1	9.1	9.1	9.1	9.1	9.1	9.0	9.0	9.1	9.1	8.9
Std. Deviation	0.70	0.74	0.79	0.71	0.72	0.73	0.72	0.70	0.67	0.72	0.70	0.74
% Calcium > 10.2	2%	2%	3%	2%	2%	2%	1%	2%	0%	3%	3%	1%

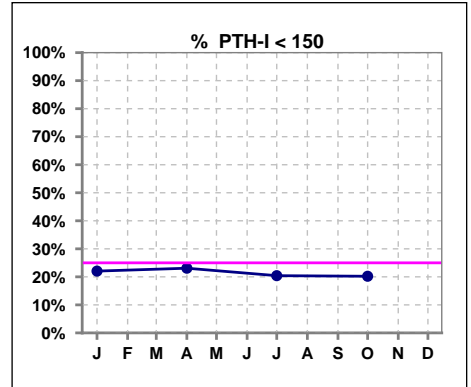


Methodology: a) Kt/V, CRCL and nPNa values are 4 month rolling mean of last value for each month, all other report lab results are based on last value of month; b) BP's are average of all values for month.

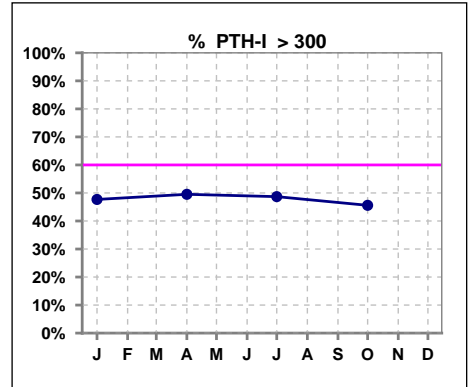
Lab methodology for PTH changed January 2012

III. OSTEODYSTROPHY - CONT.

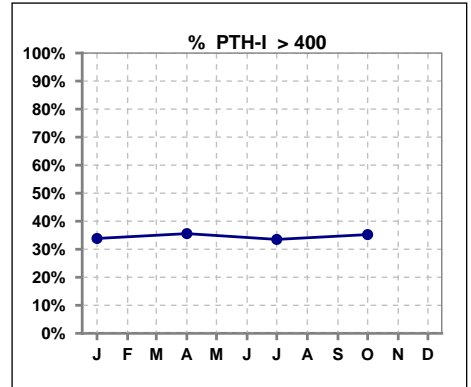
	Jan	Feb	Mar	Apr	May	Jun	Jul	Aug	Sep	Oct	Nov	Dec
# PTH-I	195			208			191			193		
# PTH-I < 150	43			48			39			39		
Pop. Mean	363			387			382			387		
Std. Deviation	280			394			327			344		
% PTH-I < 150	22%			23%			20%			20%		



	Jan	Feb	Mar	Apr	May	Jun	Jul	Aug	Sep	Oct	Nov	Dec
# PTH-I	195			208			191			193		
# PTH-I > 300	93			103			93			88		
Pop. Mean	363			387			382			387		
Std. Deviation	280			394			327			344		
% PTH-I > 300	48%			50%			49%			46%		

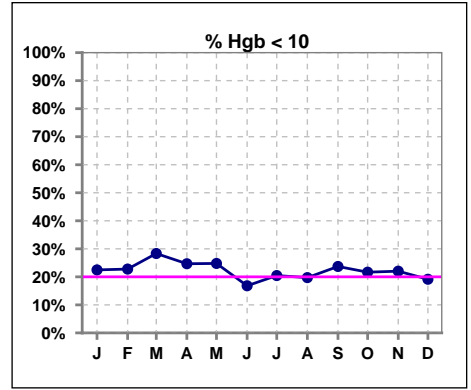


	Jan	Feb	Mar	Apr	May	Jun	Jul	Aug	Sep	Oct	Nov	Dec
# PTH-I	195			208			191			193		
# PTH-I > 400	66			74			64			68		
Pop. Mean	363			387			382			387		
Std. Deviation	280			394			327			344		
% PTH-I > 400	34%			36%			34%			35%		

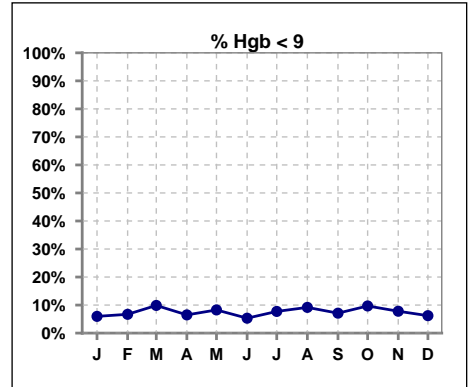


IV. ANEMIA

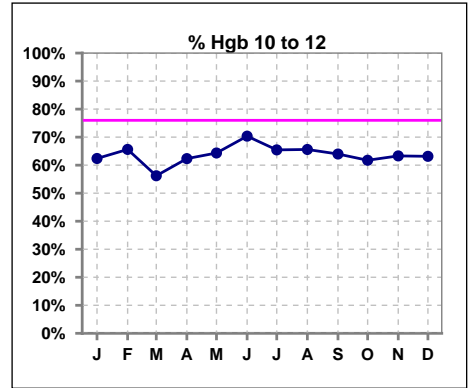
	Jan	Feb	Mar	Apr	May	Jun	Jul	Aug	Sep	Oct	Nov	Dec
# Hgb	218	224	233	231	230	226	220	218	211	217	218	209
# Hgb < 10	49	51	66	57	57	38	45	43	50	47	48	40
Pop. Mean	10.8	10.8	10.6	10.7	10.6	10.8	10.8	10.8	10.8	10.9	10.8	10.9
Std. Deviation	1.3	1.2	1.4	1.3	1.3	1.2	1.3	1.3	1.2	1.4	1.3	1.3
% Hgb < 10	22%	23%	28%	25%	25%	17%	20%	20%	24%	22%	22%	19%



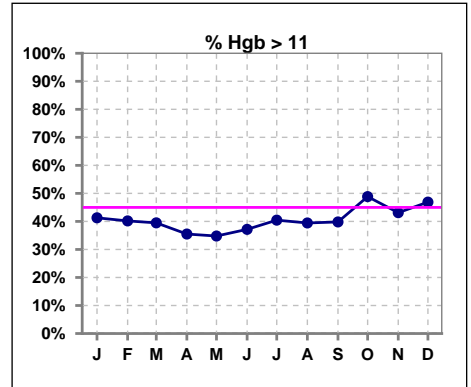
	Jan	Feb	Mar	Apr	May	Jun	Jul	Aug	Sep	Oct	Nov	Dec
# Hgb	218	224	233	231	230	226	220	218	211	217	218	209
# Hgb < 9	13	15	23	15	19	12	17	20	15	21	17	13
Pop. Mean	10.8	10.8	10.6	10.7	10.6	10.8	10.8	10.8	10.8	10.9	10.8	10.9
Std. Deviation	1.3	1.2	1.4	1.3	1.3	1.2	1.3	1.3	1.2	1.4	1.3	1.3
% Hgb < 9	6%	7%	10%	6%	8%	5%	8%	9%	7%	10%	8%	6%



	Jan	Feb	Mar	Apr	May	Jun	Jul	Aug	Sep	Oct	Nov	Dec
# Hgb	218	224	233	231	230	226	220	218	211	217	218	209
# Hgb 10 to 12	136	147	131	144	148	159	144	143	135	134	138	132
Pop. Mean	10.8	10.8	10.6	10.7	10.6	10.8	10.8	10.8	10.8	10.9	10.8	10.9
Std. Deviation	1.3	1.2	1.4	1.3	1.3	1.2	1.3	1.3	1.2	1.4	1.3	1.3
% Hgb 10 to 12	62%	66%	56%	62%	64%	70%	65%	66%	64%	62%	63%	63%

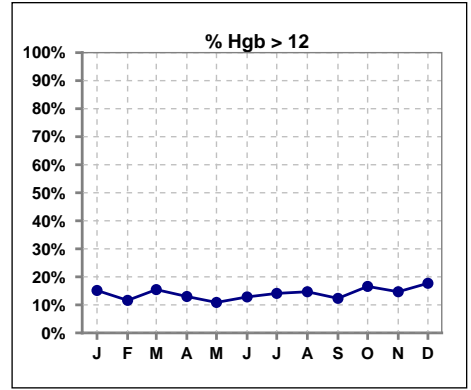


	Jan	Feb	Mar	Apr	May	Jun	Jul	Aug	Sep	Oct	Nov	Dec
# Hgb	218	224	233	231	230	226	220	218	211	217	218	209
# Hgb > 11	90	90	92	82	80	84	89	86	84	106	94	98
Pop. Mean	10.8	10.8	10.6	10.7	10.6	10.8	10.8	10.8	10.8	10.9	10.8	10.9
Std. Deviation	1.3	1.2	1.4	1.3	1.3	1.2	1.3	1.3	1.2	1.4	1.3	1.3
% Hgb > 11	41%	40%	39%	35%	35%	37%	40%	39%	40%	49%	43%	47%



IV. ANEMIA - CONT.

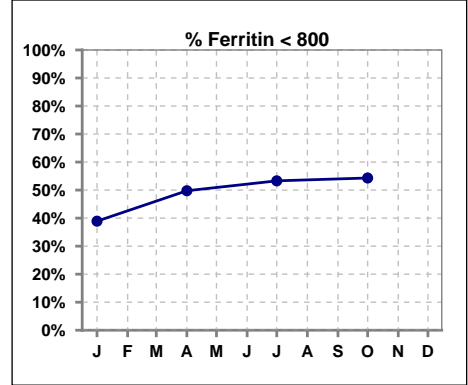
	Jan	Feb	Mar	Apr	May	Jun	Jul	Aug	Sep	Oct	Nov	Dec
# Hgb	218	224	233	231	230	226	220	218	211	217	218	209
# Hgb > 12	33	26	36	30	25	29	31	32	26	36	32	37
Pop. Mean	10.8	10.8	10.6	10.7	10.6	10.8	10.8	10.8	10.8	10.9	10.8	10.9
Std. Deviation	1.3	1.2	1.4	1.3	1.3	1.2	1.3	1.3	1.2	1.4	1.3	1.3
% Hgb > 12	15%	12%	15%	13%	11%	13%	14%	15%	12%	17%	15%	18%



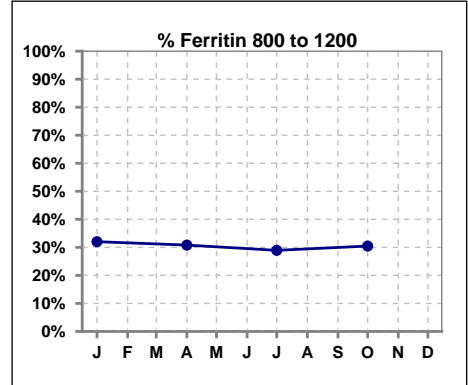
IV. ANEMIA - CONT.

Iron Profile

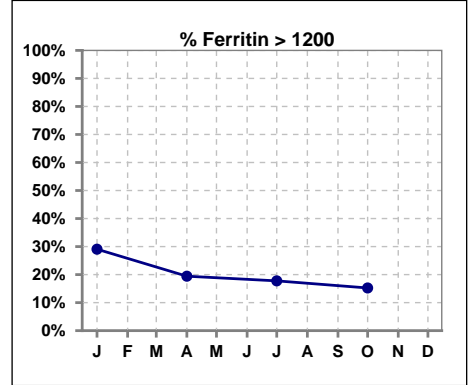
	Jan	Feb	Mar	Apr	May	Jun	Jul	Aug	Sep	Oct	Nov	Dec
# Ferritin	203			211			197			197		
# Ferritin < 800	79			105			105			107		
Pop. Mean	988			859			804			767		
Std. Deviation	559			489			530			452		
% Ferritin < 800	39%			50%			53%			54%		



	Jan	Feb	Mar	Apr	May	Jun	Jul	Aug	Sep	Oct	Nov	Dec
# Ferritin	203			211			197			197		
# Ferritin 800 to 1200	65			65			57			60		
Pop. Mean	988			859			804			767		
Std. Deviation	559			489			530			452		
% Ferritin 800 to 1200	32%			31%			29%			30%		

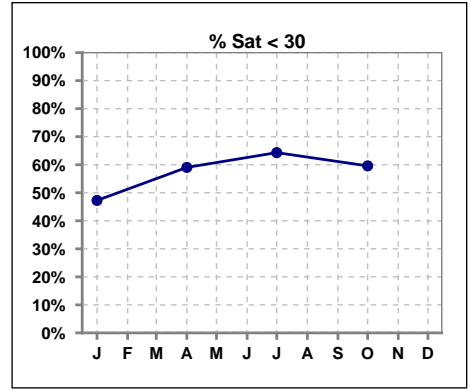


	Jan	Feb	Mar	Apr	May	Jun	Jul	Aug	Sep	Oct	Nov	Dec
# Ferritin	203			211			197			197		
# Ferritin > 1200	59			41			35			30		
Pop. Mean	988			859			804			767		
Std. Deviation	559			489			530			452		
% Ferritin > 1200	29%			19%			18%			15%		

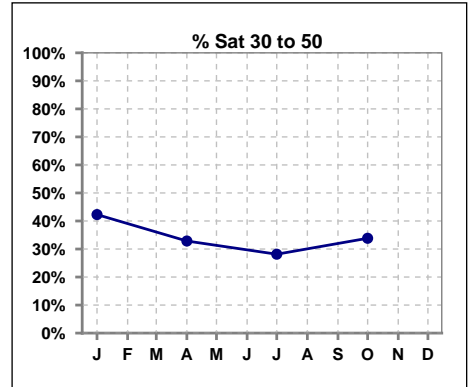


IV. ANEMIA - CONT.

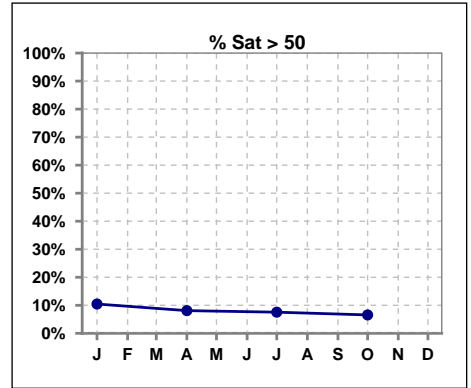
	Jan	Feb	Mar	Apr	May	Jun	Jul	Aug	Sep	Oct	Nov	Dec
# % Sat	201			210			199			198		
# % Sat < 30	95			124			128			118		
Pop. Mean	33			30			29			29		
Std. Deviation	15			14			15			13		
% % Sat < 30	47%			59%			64%			60%		



	Jan	Feb	Mar	Apr	May	Jun	Jul	Aug	Sep	Oct	Nov	Dec
# % Sat	201			210			199			198		
# % Sat 30 to 50	85			69			56			67		
Pop. Mean	33			30			29			29		
Std. Deviation	15			14			15			13		
% Sat% 30 to 50	42%			33%			28%			34%		

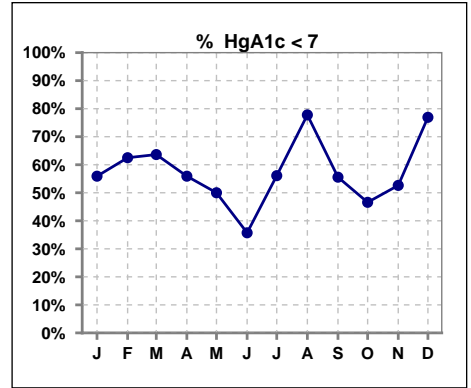


	Jan	Feb	Mar	Apr	May	Jun	Jul	Aug	Sep	Oct	Nov	Dec
# % Sat	201			210			199			198		
# % Sat > 50	21			17			15			13		
Pop. Mean	33			30			29			29		
Std. Deviation	15			14			15			13		
% Sat% > 50	10%			8%			8%			7%		



V. Diabetes

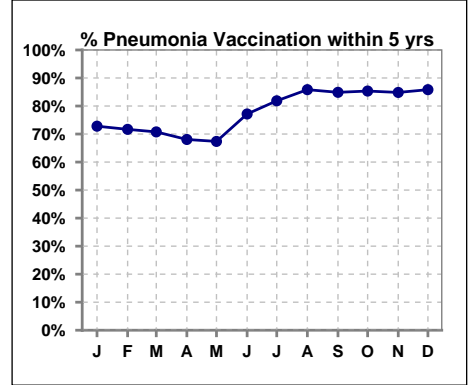
	Jan	Feb	Mar	Apr	May	Jun	Jul	Aug	Sep	Oct	Nov	Dec
# HgA1c	93	8	11	93	6	14	82	9	9	88	19	13
# HgA1c < 7	52	5	7	52	3	5	46	7	5	41	10	10
Pop. Mean	7.0	6.7	6.6	7.0	7.0	7.4	6.9	6.3	7.1	7.3	7.0	6.8
Std. Deviation	1.10	0.87	0.73	1.19	1.47	1.14	1.11	0.78	0.94	1.40	1.50	1.60
% HgA1c < 7	56%	63%	64%	56%	50%	36%	56%	78%	56%	47%	53%	77%



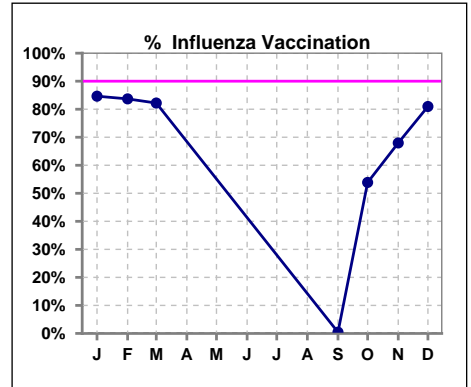
VI. Infection Control

Pneumonia vaccination within the past five years

	Jan	Feb	Mar	Apr	May	Jun	Jul	Aug	Sep	Oct	Nov	Dec
# Patient	228	233	236	238	236	232	226	226	225	232	231	226
# Pneumonia	166	167	167	162	159	179	185	194	191	198	196	194
% Pneumonia	73%	72%	71%	68%	67%	77%	82%	86%	85%	85%	85%	86%



	Jan	Feb	Mar	Apr	May	Jun	Jul	Aug	Sep	Oct	Nov	Dec
# Patient	228	233	236						225	232	231	226
# Influenza	193	195	194						1	125	157	183
% Influenza	85%	84%	82%						0%	54%	68%	81%



Exit Site Infection Rate

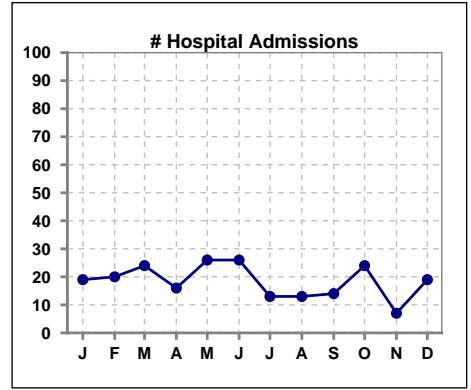
	Jan	Feb	Mar	Apr	May	Jun	Jul	Aug	Sep	Oct	Nov	Dec
Current Month	59.44	112.46	61.68	40.94	125.87	80.90	243.10	239.25	57.23	241.62	233.60	238.86
Rolling Year-to-date	0.14	0.12	0.12	0.14	0.14	0.14	0.13	0.12	0.14	0.13	0.13	0.13

Peritonitis Infection Rate

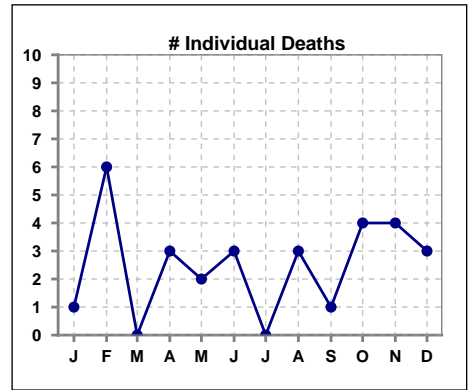
	Jan	Feb	Mar	Apr	May	Jun	Jul	Aug	Sep	Oct	Nov	Dec
Current Month	59.44	32.13	49.34	61.42	20.98	60.68	48.62	39.88	32.70	40.27	38.93	119.43
Rolling Year-to-date	0.26	0.26	0.27	0.26	0.28	0.27	0.28	0.29	0.30	0.31	0.30	0.28

VIII. Outcome measures

	Jan	Feb	Mar	Apr	May	Jun	Jul	Aug	Sep	Oct	Nov	Dec
# Patient	228	233	236	238	236	232	226	226	225	232	231	226
# Hospital Admissions	19	20	24	16	26	26	13	13	14	24	7	19



	Jan	Feb	Mar	Apr	May	Jun	Jul	Aug	Sep	Oct	Nov	Dec
# Patient	228	233	236	238	236	232	226	226	225	232	231	226
# Individual Deaths	1	6	0	3	2	3	0	3	1	4	4	3



	Jan	Feb	Mar	Apr	May	Jun	Jul	Aug	Sep	Oct	Nov	Dec
# Patient	228	233	236	238	236	232	226	226	225	232	231	226
# Transplants	0	1	3	1	0	0	0	0	0	0	0	1

