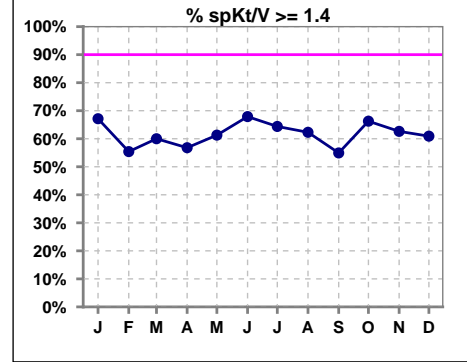
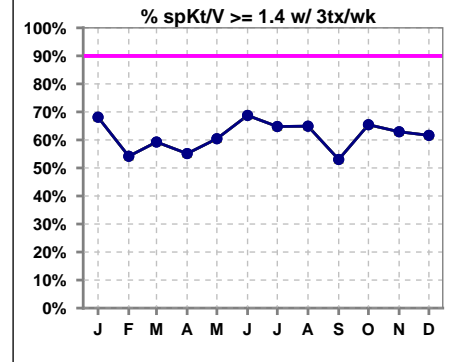


I. ADEQUACY OF DIALYSIS

	Jan	Feb	Mar	Apr	May	Jun	Jul	Aug	Sep	Oct	Nov	Dec
# spKt/V	70	74	85	81	93	81	73	61	71	83	91	87
# spKt/V >= 1.4	47	41	51	46	57	55	47	38	39	55	57	53
Pop. Mean	1.54	1.50	1.53	1.54	1.51	1.53	1.46	1.53	1.42	1.53	1.48	1.50
Std. Deviation	0.33	0.39	0.41	0.41	0.37	0.33	0.36	0.32	0.36	0.33	0.34	0.30
% spKt/V >= 1.4	67%	55%	60%	57%	61%	68%	64%	62%	55%	66%	63%	61%
% spKt/V >= 1.2	91%	86%	88%	90%	87%	91%	86%	93%	86%	90%	85%	90%

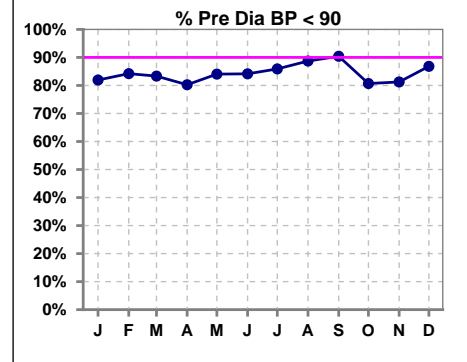


	Jan	Feb	Mar	Apr	May	Jun	Jul	Aug	Sep	Oct	Nov	Dec
# spKt/V w/ 3tx/wk	69	72	81	78	91	80	71	57	66	81	89	86
# spKt/V >= 1.4 w/3tx/wk	47	39	48	43	55	55	46	37	35	53	56	53
Pop. Mean	1.55	1.49	1.51	1.51	1.51	1.53	1.48	1.54	1.41	1.53	1.48	1.50
Std. Deviation	0.33	0.39	0.35	0.38	0.38	0.33	0.34	0.33	0.37	0.33	0.34	0.30
% spKt/V >= 1.4 w/3tx/wk	68%	54%	59%	55%	60%	69%	65%	65%	53%	65%	63%	62%

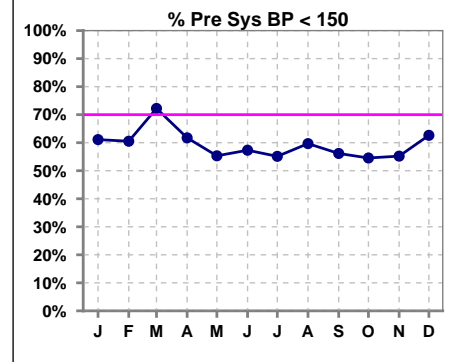


Blood Pressure Control (Pre)

	Jan	Feb	Mar	Apr	May	Jun	Jul	Aug	Sep	Oct	Nov	Dec
# Pre Dia BP	72	76	90	81	94	82	78	62	73	88	96	91
# Pre Dia BP < 90	59	64	75	65	79	69	67	55	66	71	78	79
Pop. Mean	79	77	77	79	79	78	79	77	77	77	78	77
Std. Deviation	10.7	12.7	12.7	13.1	12.2	11.8	12.0	12.0	11.4	12.2	12.5	12.1
% Pre Dia BP < 90	82%	84%	83%	80%	84%	84%	86%	89%	90%	81%	81%	87%



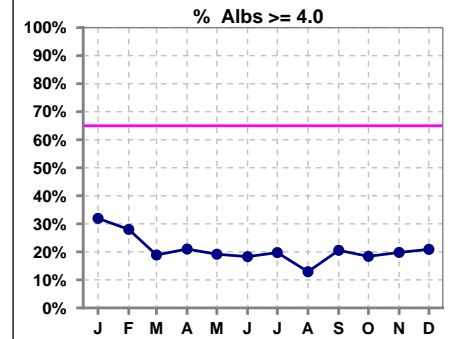
	Jan	Feb	Mar	Apr	May	Jun	Jul	Aug	Sep	Oct	Nov	Dec
# Pre Sys BP	72	76	90	81	94	82	78	62	73	88	96	91
# Pre Sys BP < 150	44	46	65	50	52	47	43	37	41	48	53	57
Pop. Mean	146	144	141	143	144	145	146	143	145	145	147	143
Std. Deviation	19.0	21.2	20.0	21.8	21.2	22.2	19.7	18.9	20.3	19.9	19.4	18.1
% Pre Sys BP < 150	61%	61%	72%	62%	55%	57%	55%	60%	56%	55%	55%	63%



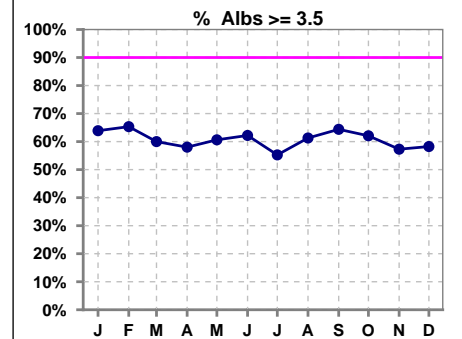
*Albumin values use BCG method - as of July 2001

II. NUTRITION

	Jan	Feb	Mar	Apr	May	Jun	Jul	Aug	Sep	Oct	Nov	Dec
# Albumin	72	75	90	81	94	82	76	62	73	87	96	91
# Albumin >= 4.0	23	21	17	17	18	15	15	8	15	16	19	19
Pop. Mean	3.6	3.6	3.5	3.5	3.5	3.5	3.5	3.5	3.6	3.5	3.6	3.6
Std. Deviation	0.52	0.57	0.51	0.49	0.49	0.45	0.47	0.48	0.46	0.50	0.50	0.48
% Alb >= 4.0	32%	28%	19%	21%	19%	18%	20%	13%	21%	18%	20%	21%



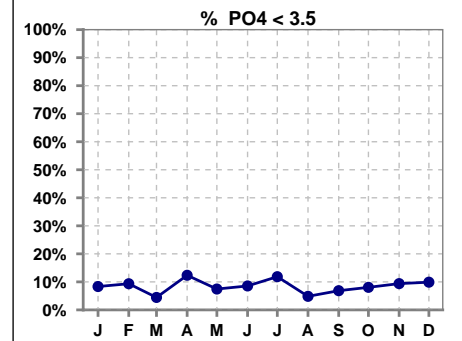
	Jan	Feb	Mar	Apr	May	Jun	Jul	Aug	Sep	Oct	Nov	Dec
# Albumin	72	75	90	81	94	82	76	62	73	87	96	91
# Albumin >= 3.5	46	49	54	47	57	51	42	38	47	54	55	53
Pop. Mean	3.6	3.6	3.5	3.5	3.5	3.5	3.5	3.5	3.6	3.5	3.6	3.6
Std. Deviation	0.52	0.57	0.51	0.49	0.49	0.45	0.47	0.48	0.46	0.50	0.50	0.48
% Alb >= 3.5	64%	65%	60%	58%	61%	62%	55%	61%	64%	62%	57%	58%



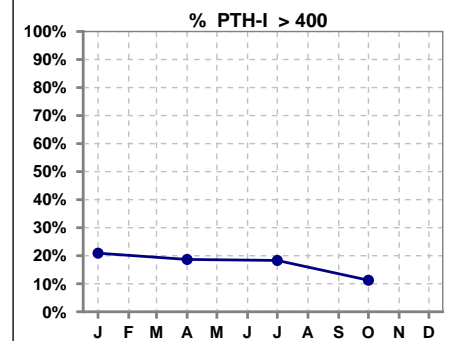
Lab methodology for PTH changed January 2012

III. OSTEODYSTROPHY

	Jan	Feb	Mar	Apr	May	Jun	Jul	Aug	Sep	Oct	Nov	Dec
# PO4	72	75	90	81	94	82	76	62	73	87	96	91
# PO4 < 3.5	6	7	4	10	7	7	9	3	5	7	9	9
Pop. Mean	5.3	5.3	5.5	5.5	5.5	5.3	5.2	5.3	5.5	5.4	5.6	5.6
Std. Deviation	1.56	1.88	1.69	1.95	1.75	1.37	1.67	1.31	1.77	1.78	1.92	1.66
% PO4 < 3.5	8%	9%	4%	12%	7%	9%	12%	5%	7%	8%	9%	10%

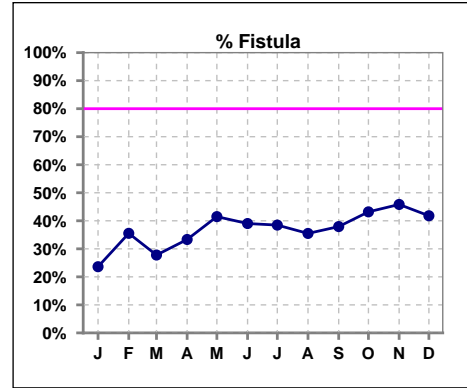


	Jan	Feb	Mar	Apr	May	Jun	Jul	Aug	Sep	Oct	Nov	Dec
# PTH-I	67			75			71			80		
# PTH-I > 400	14			14			13			9		
Pop. Mean	246			295			262			231		
Std. Deviation	167			329			170			167		
% PTH-I > 400	21%			19%			18%			11%		

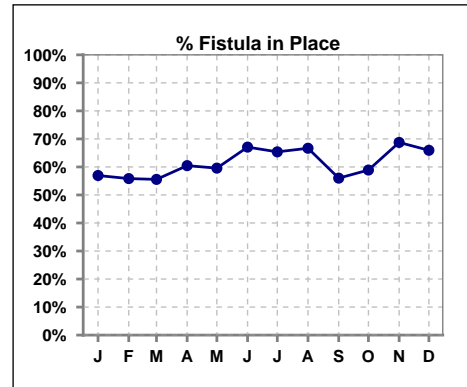


IV. ACCESS

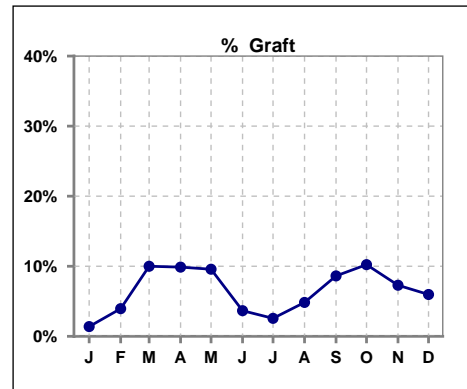
	Jan	Feb	Mar	Apr	May	Jun	Jul	Aug	Sep	Oct	Nov	Dec
# Access	72	75	90	81	94	82	78	62	58	88	96	67
# Fistula	17	27	25	27	39	32	30	22	22	38	44	28
% Fistula	24%	36%	28%	33%	41%	39%	38%	35%	38%	43%	46%	42%



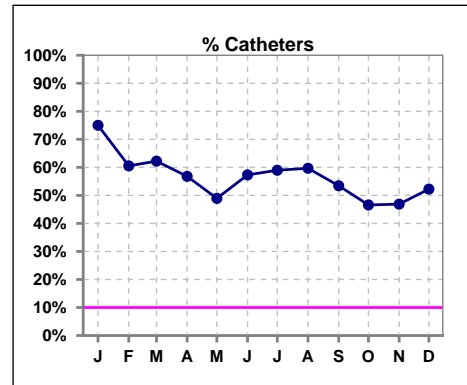
	Jan	Feb	Mar	Apr	May	Jun	Jul	Aug	Sep	Oct	Nov	Dec
# Patient	72	77	90	86	94	82	78	63	75	90	96	91
# Fistula in Place	41	43	50	52	56	55	51	42	42	53	66	60
% Fistula in Place	57%	56%	56%	60%	60%	67%	65%	67%	56%	59%	69%	66%



	Jan	Feb	Mar	Apr	May	Jun	Jul	Aug	Sep	Oct	Nov	Dec
# Access	72	75	90	81	94	82	78	62	58	88	96	67
# Graft	1	3	9	8	9	3	2	3	5	9	7	4
% Graft	1%	4%	10%	10%	10%	4%	3%	5%	9%	10%	7%	6%

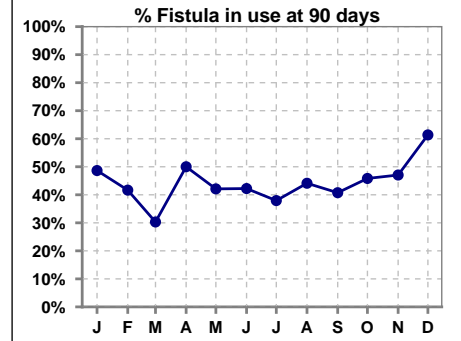


	Jan	Feb	Mar	Apr	May	Jun	Jul	Aug	Sep	Oct	Nov	Dec
# Access	72	75	90	81	94	82	78	62	58	88	96	67
# Catheters	54	46	56	46	46	47	46	37	31	41	45	35
% Catheters	75%	61%	62%	57%	49%	57%	59%	60%	53%	47%	47%	52%

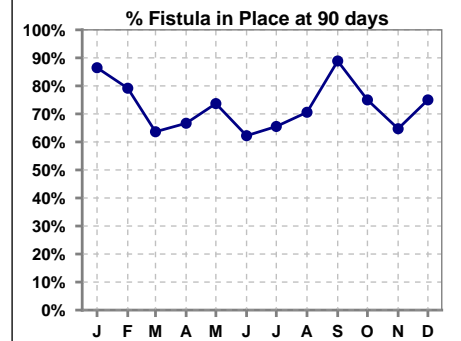


IV. ACCESS - CONT. Access at 90 days for those patients that reached 90 days within the month.

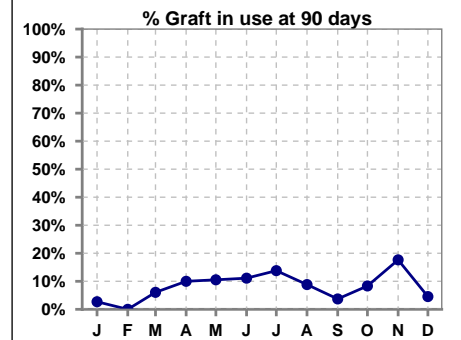
	Jan	Feb	Mar	Apr	May	Jun	Jul	Aug	Sep	Oct	Nov	Dec
# Patient	37	24	33	30	38	45	29	34	27	24	17	44
# Fistula in use	18	10	10	15	16	19	11	15	11	11	8	27
% Fistula in use	49%	42%	30%	50%	42%	42%	38%	44%	41%	46%	47%	61%



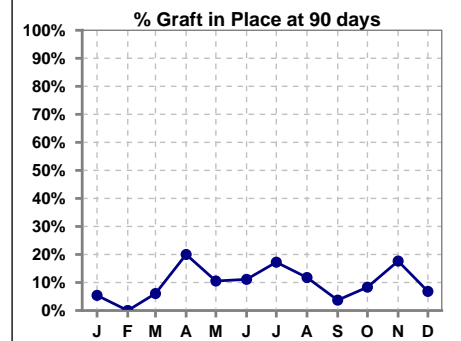
	Jan	Feb	Mar	Apr	May	Jun	Jul	Aug	Sep	Oct	Nov	Dec
# Patient	37	24	33	30	38	45	29	34	27	24	17	44
# Fistula in Place	32	19	21	20	28	28	19	24	24	18	11	33
% Fistula in Place	86%	79%	64%	67%	74%	62%	66%	71%	89%	75%	65%	75%



	Jan	Feb	Mar	Apr	May	Jun	Jul	Aug	Sep	Oct	Nov	Dec
# Patient	37	24	33	30	38	45	29	34	27	24	17	44
# Graft in use	1	0	2	3	4	5	4	3	1	2	3	2
% Graft in use	3%	0%	6%	10%	11%	11%	14%	9%	4%	8%	18%	5%

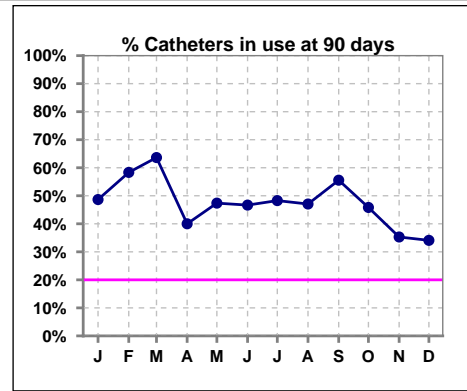


	Jan	Feb	Mar	Apr	May	Jun	Jul	Aug	Sep	Oct	Nov	Dec
# Patient	37	24	33	30	38	45	29	34	27	24	17	44
# Graft in Place	2	0	2	6	4	5	5	4	1	2	3	3
% Graft in Place	5%	0%	6%	20%	11%	11%	17%	12%	4%	8%	18%	7%

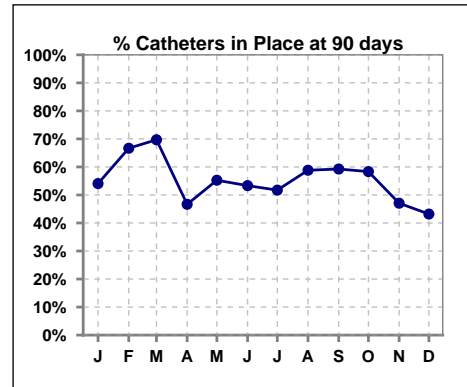


IV. ACCESS - CONT. Access at 90 days for those patients that reached 90 days within the month.

	Jan	Feb	Mar	Apr	May	Jun	Jul	Aug	Sep	Oct	Nov	Dec
# Patient	37	24	33	30	38	45	29	34	27	24	17	44
# Catheters in use	18	14	21	12	18	21	14	16	15	11	6	15
% Catheters in use	49%	58%	64%	40%	47%	47%	48%	47%	56%	46%	35%	34%

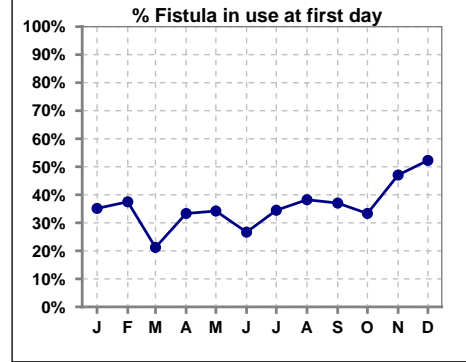


	Jan	Feb	Mar	Apr	May	Jun	Jul	Aug	Sep	Oct	Nov	Dec
# Patient	37	24	33	30	38	45	29	34	27	24	17	44
# Catheters in Place	20	16	23	14	21	24	15	20	16	14	8	19
% Catheters in Place	54%	67%	70%	47%	55%	53%	52%	59%	59%	58%	47%	43%

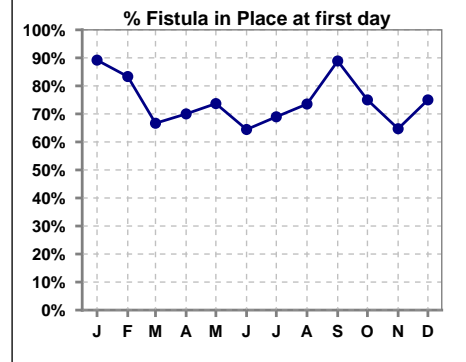


IV. ACCESS - CONT. Access at first day for those patients that reached 90 days within the month.

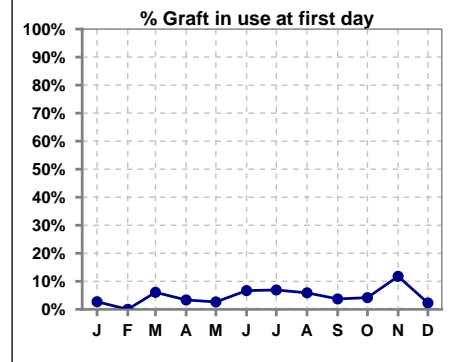
	Jan	Feb	Mar	Apr	May	Jun	Jul	Aug	Sep	Oct	Nov	Dec
# Patient	37	24	33	30	38	45	29	34	27	24	17	44
# Fistula in use	13	9	7	10	13	12	10	13	10	8	8	23
% Fistula in use	35%	38%	21%	33%	34%	27%	34%	38%	37%	33%	47%	52%



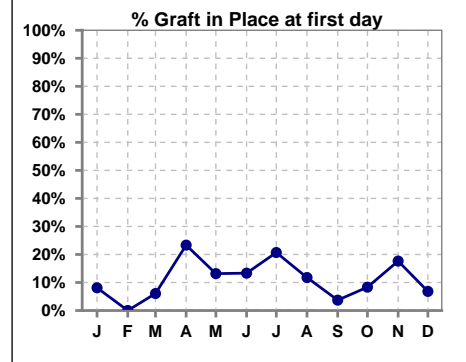
	Jan	Feb	Mar	Apr	May	Jun	Jul	Aug	Sep	Oct	Nov	Dec
# Patient	37	24	33	30	38	45	29	34	27	24	17	44
# Fistula in Place	33	20	22	21	28	29	20	25	24	18	11	33
% Fistula in Place	89%	83%	67%	70%	74%	64%	69%	74%	89%	75%	65%	75%



	Jan	Feb	Mar	Apr	May	Jun	Jul	Aug	Sep	Oct	Nov	Dec
# Patient	37	24	33	30	38	45	29	34	27	24	17	44
# Graft in use	1	0	2	1	1	3	2	2	1	1	2	1
% Graft in use	3%	0%	6%	3%	3%	7%	7%	6%	4%	4%	12%	2%

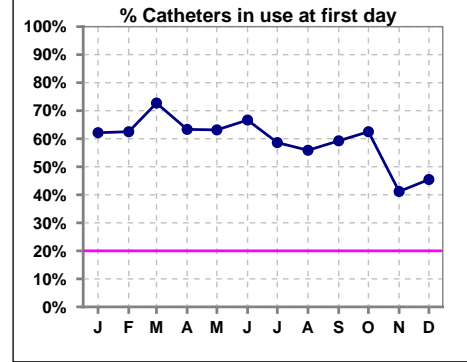


	Jan	Feb	Mar	Apr	May	Jun	Jul	Aug	Sep	Oct	Nov	Dec
# Patient	37	24	33	30	38	45	29	34	27	24	17	44
# Graft in Place	3	0	2	7	5	6	6	4	1	2	3	3
% Graft in Place	8%	0%	6%	23%	13%	13%	21%	12%	4%	8%	18%	7%

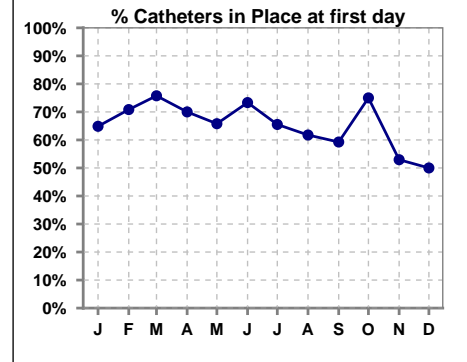


IV. ACCESS - CONT. Access at first day for those patients that reached 90 days within the month.

	Jan	Feb	Mar	Apr	May	Jun	Jul	Aug	Sep	Oct	Nov	Dec
# Patient	37	24	33	30	38	45	29	34	27	24	17	44
# Catheters in use	23	15	24	19	24	30	17	19	16	15	7	20
% Catheters in use	62%	63%	73%	63%	63%	67%	59%	56%	59%	63%	41%	45%



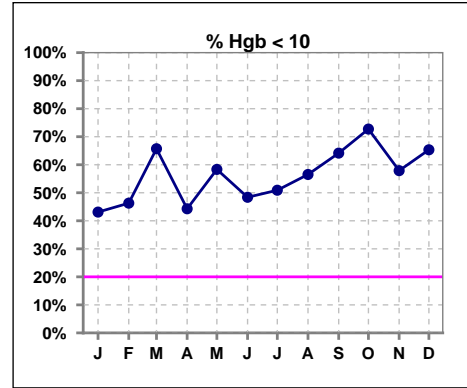
	Jan	Feb	Mar	Apr	May	Jun	Jul	Aug	Sep	Oct	Nov	Dec
# Patient	37	24	33	30	38	45	29	34	27	24	17	44
# Catheters in Place	24	17	25	21	25	33	19	21	16	18	9	22
% Catheters in Place	65%	71%	76%	70%	66%	73%	66%	62%	59%	75%	53%	50%



V. ANEMIA

	Jan	Feb	Mar	Apr	May	Jun	Jul	Aug	Sep	Oct	Nov	Dec
# Hgb	58	54	70	70	72	62	55	46	53	66	76	75
# Hgb < 10	25	25	46	31	42	30	28	26	34	48	44	49
Pop. Mean	10.2	9.8	9.6	9.9	9.8	10.0	10.1	9.8	9.6	9.4	9.8	9.6
Std. Deviation	1.5	1.8	1.5	1.5	1.6	1.2	1.5	1.5	1.5	1.3	1.5	1.4
% Hgb < 10	43%	46%	66%	44%	58%	48%	51%	57%	64%	73%	58%	65%

Note: Excludes patients who received no ESA in month.



	Jan	Feb	Mar	Apr	May	Jun	Jul	Aug	Sep	Oct	Nov	Dec
# Hgb	58	54	70	70	72	62	55	46	53	66	76	75
# Hgb > 12	6	5	6	5	6	0	7	4	3	3	5	5
Pop. Mean	10.2	9.8	9.6	9.9	9.8	10.0	10.1	9.8	9.6	9.4	9.8	9.6
Std. Deviation	1.5	1.8	1.5	1.5	1.6	1.2	1.5	1.5	1.5	1.3	1.5	1.4
% Hgb > 12	10%	9%	9%	7%	8%	0%	13%	9%	6%	5%	7%	7%

Note: Excludes patients who received no ESA in month.

