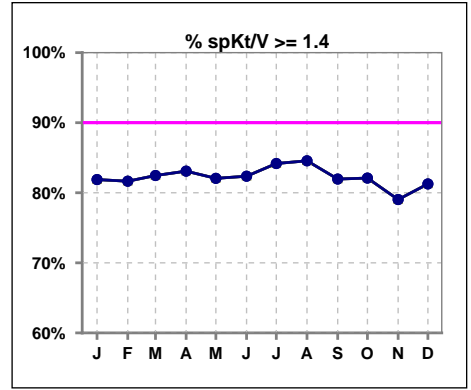
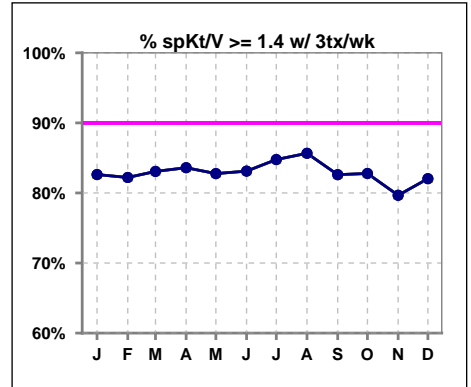


**I. ADEQUACY OF DIALYSIS**

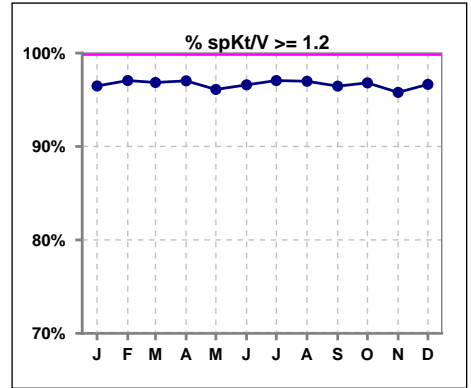
	Jan	Feb	Mar	Apr	May	Jun	Jul	Aug	Sep	Oct	Nov	Dec
# spKt/V	1391	1395	1397	1413	1438	1440	1428	1425	1441	1441	1450	1462
# spKt/V >= 1.4	1139	1139	1152	1174	1180	1186	1202	1205	1181	1183	1146	1188
Pop. Mean	1.66	1.66	1.66	1.67	1.65	1.66	1.66	1.67	1.65	1.64	1.61	1.63
Std. Deviation	0.32	0.32	0.31	0.31	0.31	0.31	0.30	0.30	0.31	0.29	0.30	0.30
% spKt/V >= 1.4	82%	82%	82%	83%	82%	82%	84%	85%	82%	82%	79%	81%



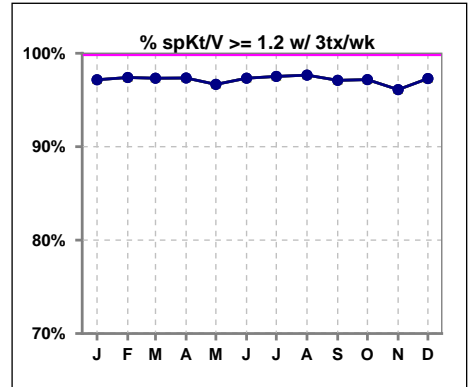
	Jan	Feb	Mar	Apr	May	Jun	Jul	Aug	Sep	Oct	Nov	Dec
# spKt/V w/ 3tx/wk	1341	1349	1347	1360	1381	1386	1372	1367	1380	1382	1387	1403
# spKt/V >= 1.4 w/3tx/wk	108	1109	1119	1137	1143	1152	1163	1171	1140	1144	1105	1151
Pop. Mean	1.67	1.66	1.66	1.67	1.66	1.66	1.66	1.67	1.65	1.65	1.62	1.64
Std. Deviation	0.31	0.32	0.31	0.30	0.30	0.30	0.30	0.29	0.30	0.29	0.30	0.29
% >= 1.4 w/3tx/wk	83%	82%	83%	84%	83%	83%	85%	86%	83%	83%	80%	82%



	Jan	Feb	Mar	Apr	May	Jun	Jul	Aug	Sep	Oct	Nov	Dec
# spKt/V	1391	1395	1397	1413	1438	1440	1428	1425	1441	1441	1450	1462
# spKt/V >= 1.2	1342	1354	1353	1371	1382	1391	1386	1382	1390	1395	1389	1413
Pop. Mean	1.66	1.66	1.66	1.67	1.65	1.66	1.66	1.67	1.65	1.64	1.61	1.63
Std. Deviation	0.32	0.32	0.31	0.31	0.31	0.31	0.30	0.30	0.31	0.29	0.30	0.30
% spKt/V >= 1.2	96%	97%	97%	97%	96%	97%	97%	97%	96%	97%	96%	97%



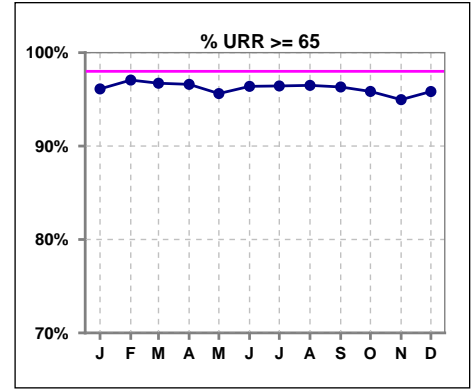
	Jan	Feb	Mar	Apr	May	Jun	Jul	Aug	Sep	Oct	Nov	Dec
# spKt/V w/ 3tx/wk	1341	1349	1347	1360	1381	1386	1372	1367	1380	1382	1387	1403
# spKt/V >= 1.2 w/3tx/wk	303	1314	1311	1324	1335	1349	1338	1335	1340	1343	1333	1365
Pop. Mean	1.67	1.66	1.66	1.67	1.66	1.66	1.66	1.67	1.65	1.65	1.62	1.64
Std. Deviation	0.31	0.32	0.31	0.30	0.30	0.30	0.30	0.29	0.30	0.29	0.30	0.29
% >= 1.2 w/3tx/wk	97%	97%	97%	97%	97%	97%	98%	98%	97%	97%	96%	97%



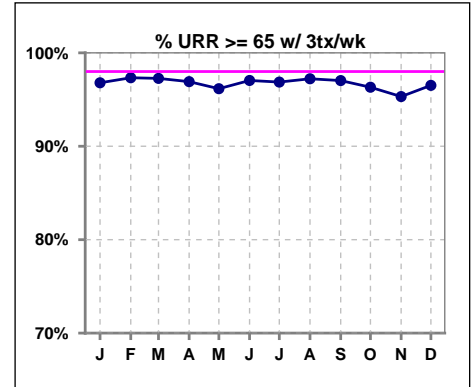
Methodology: a) All labs for 'Adequacy of Dialysis', 'Nutrition', 'Osteodystrophy', 'Anemia' and 'Diabetes' based on last value of month; b) BP's and #L processed are average of all values for month; c) Access data takes last access of month; d) Values for SGA and 'Infection Control' use most recent result.

**I. ADEQUACY OF DIALYSIS - CONT.**

	Jan	Feb	Mar	Apr	May	Jun	Jul	Aug	Sep	Oct	Nov	Dec
# URR	1391	1396	1405	1414	1438	1442	1430	1427	1442	1444	1451	1466
# URR >= 65	1337	1355	1359	1366	1375	1390	1379	1377	1389	1384	1378	1405
Pop. Mean	76	76	76	76	76	76	76	76	76	75	75	75
Std. Deviation	6.54	6.31	6.42	6.11	6.39	6.08	6.26	5.93	6.43	6.16	6.37	6.27
<b>% URR &gt;= 65</b>	<b>96%</b>	<b>97%</b>	<b>97%</b>	<b>97%</b>	<b>96%</b>	<b>96%</b>	<b>96%</b>	<b>96%</b>	<b>96%</b>	<b>96%</b>	<b>95%</b>	<b>96%</b>



	Jan	Feb	Mar	Apr	May	Jun	Jul	Aug	Sep	Oct	Nov	Dec
# URR w/ 3tx/wk	1341	1350	1354	1361	1381	1387	1374	1369	1381	1385	1388	1407
# URR>=65 w/ 3tx/wk	1298	1314	1317	1319	1328	1346	1331	1331	1340	1334	1323	1358
Pop. Mean	76	76	76	76	76	76	76	76	76	76	75	75
Std. Deviation	6.27	6.26	6.24	6.01	6.23	5.90	6.05	5.76	6.29	6.04	6.32	6.11
<b>% URR&gt;=65 w/ 3tx/wk</b>	<b>97%</b>	<b>97%</b>	<b>97%</b>	<b>97%</b>	<b>96%</b>	<b>97%</b>	<b>97%</b>	<b>97%</b>	<b>97%</b>	<b>96%</b>	<b>95%</b>	<b>97%</b>

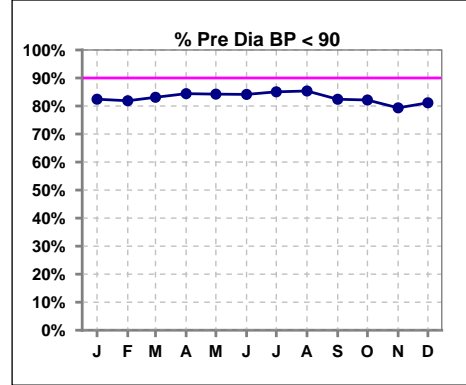


Methodology: a) All labs for 'Adequacy of Dialysis', 'Nutrition', 'Osteodystrophy', 'Anemia' and 'Diabetes' based on last value of month; b) BP's and #L processed are average of all values for month; c) Access data takes last access of month; d) Values for SGA and 'Infection Control' use most recent result.

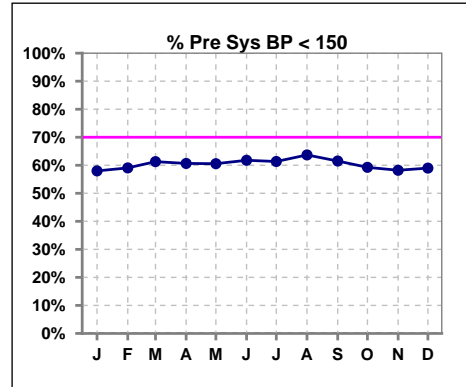
**I. ADEQUACY OF DIALYSIS - CONT.**

**Blood Pressure Control (Pre)**

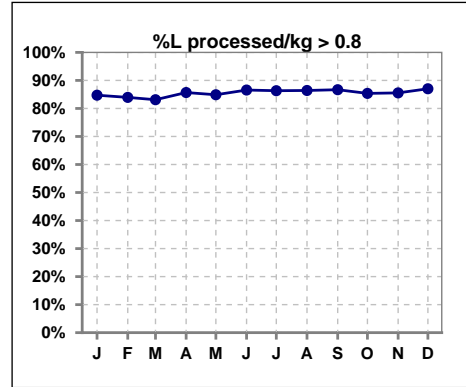
	Jan	Feb	Mar	Apr	May	Jun	Jul	Aug	Sep	Oct	Nov	Dec
# Pre Dia BP	1395	1402	1416	1418	1441	1451	1440	1435	1450	1456	1467	1480
# Pre Dia BP < 90	1150	1148	1177	1197	1214	1221	1225	1225	1195	1196	1164	1201
Pop. Mean	78	78	78	77	77	77	77	77	77	78	79	79
Std. Deviation	12.7	12.6	12.4	12.5	12.3	12.3	12.2	12.4	12.8	13.0	12.9	12.7
<b>% Pre Dia BP &lt; 90</b>	<b>82%</b>	<b>82%</b>	<b>83%</b>	<b>84%</b>	<b>84%</b>	<b>84%</b>	<b>85%</b>	<b>85%</b>	<b>82%</b>	<b>82%</b>	<b>79%</b>	<b>81%</b>



	Jan	Feb	Mar	Apr	May	Jun	Jul	Aug	Sep	Oct	Nov	Dec
# Pre Sys BP	1395	1402	1416	1418	1443	1452	1441	1435	1450	1456	1467	1480
# Pre Sys BP < 150	809	828	868	860	874	897	884	914	892	863	854	873
Pop. Mean	146	145	145	144	144	143	143	143	144	145	146	146
Std. Deviation	20.6	20.3	19.7	20.0	20.0	19.9	19.6	20.1	19.7	20.2	19.9	19.2
<b>%Pre Sys BP &lt;150</b>	<b>58%</b>	<b>59%</b>	<b>61%</b>	<b>61%</b>	<b>61%</b>	<b>62%</b>	<b>61%</b>	<b>64%</b>	<b>62%</b>	<b>59%</b>	<b>58%</b>	<b>59%</b>

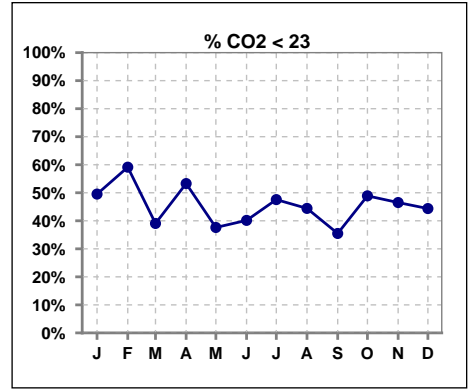


	Jan	Feb	Mar	Apr	May	Jun	Jul	Aug	Sep	Oct	Nov	Dec
# L processed/kg	1395	1402	1416	1418	1443	1452	1441	1435	1450	1456	1467	1480
# L processed/kg>0.8	1182	1177	1177	1215	1225	1257	1244	1240	1257	1243	1255	1288
Pop. Mean	1	1	1	1	1	1	1	1	1	1	1	1
Std. Deviation	0.3	0.3	0.3	0.3	0.3	0.3	0.3	0.3	0.3	0.3	0.3	0.3
<b>% L processed/kg&gt;0.8</b>	<b>85%</b>	<b>84%</b>	<b>83%</b>	<b>86%</b>	<b>85%</b>	<b>87%</b>	<b>86%</b>	<b>86%</b>	<b>87%</b>	<b>85%</b>	<b>86%</b>	<b>87%</b>

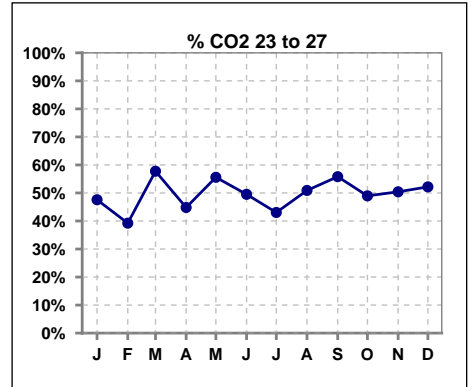


**I. ADEQUACY OF DIALYSIS - CONT.**

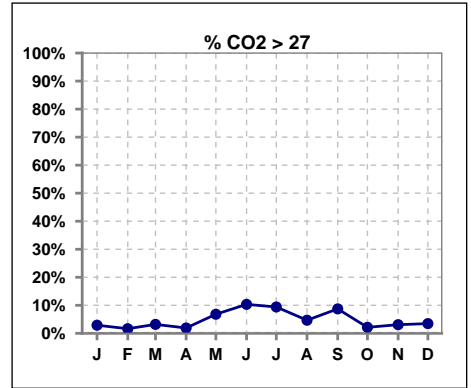
	Jan	Feb	Mar	Apr	May	Jun	Jul	Aug	Sep	Oct	Nov	Dec
# CO2	1383	1397	1411	1417	1441	1442	1436	1434	1446	1448	1462	1474
# CO2 < 23	685	826	551	755	542	579	683	637	513	708	680	654
Pop. Mean	22	22	23	22	23	23	23	23	23	22	23	23
Std. Deviation	2.82	3.04	2.58	2.77	2.97	3.39	3.65	2.93	3.08	2.63	2.68	2.71
<b>% CO2 &lt; 23</b>	<b>50%</b>	<b>59%</b>	<b>39%</b>	<b>53%</b>	<b>38%</b>	<b>40%</b>	<b>48%</b>	<b>44%</b>	<b>35%</b>	<b>49%</b>	<b>47%</b>	<b>44%</b>



	Jan	Feb	Mar	Apr	May	Jun	Jul	Aug	Sep	Oct	Nov	Dec
# CO2	1383	1397	1411	1417	1441	1442	1436	1434	1446	1448	1462	1474
# CO2 23 to 27	658	548	815	635	801	714	618	730	807	709	737	769
Pop. Mean	22	22	23	22	23	23	23	23	23	22	23	23
Std. Deviation	2.82	3.04	2.58	2.77	2.97	3.39	3.65	2.93	3.08	2.63	2.68	2.71
<b>% CO2 23 to 27</b>	<b>48%</b>	<b>39%</b>	<b>58%</b>	<b>45%</b>	<b>56%</b>	<b>50%</b>	<b>43%</b>	<b>51%</b>	<b>56%</b>	<b>49%</b>	<b>50%</b>	<b>52%</b>



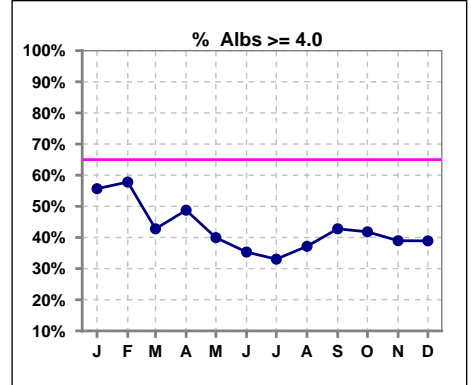
	Jan	Feb	Mar	Apr	May	Jun	Jul	Aug	Sep	Oct	Nov	Dec
# CO2	1383	1397	1411	1417	1441	1442	1436	1434	1446	1448	1462	1474
# CO2 > 27	40	23	45	27	98	149	135	67	126	31	45	51
Pop. Mean	22	22	23	22	23	23	23	23	23	22	23	23
Std. Deviation	2.82	3.04	2.58	2.77	2.97	3.39	3.65	2.93	3.08	2.63	2.68	2.71
<b>% CO2 &gt; 27</b>	<b>3%</b>	<b>2%</b>	<b>3%</b>	<b>2%</b>	<b>7%</b>	<b>10%</b>	<b>9%</b>	<b>5%</b>	<b>9%</b>	<b>2%</b>	<b>3%</b>	<b>3%</b>



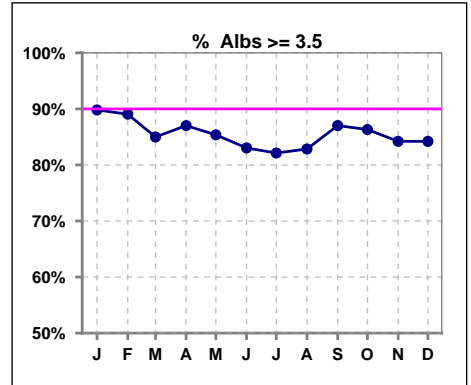
\*Albumin values use BCG method - as of July 2001

**II. NUTRITION**

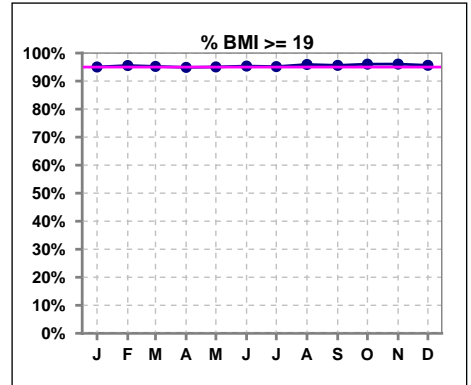
	Jan	Feb	Mar	Apr	May	Jun	Jul	Aug	Sep	Oct	Nov	Dec
# Albumin	1394	1398	1412	1417	1442	1444	1438	1434	1449	1454	1463	1475
# Albumin >= 4.0	776	808	604	691	576	510	475	533	620	608	570	574
Pop. Mean	4.0	4.0	3.8	3.9	3.8	3.8	3.8	3.8	3.9	3.8	3.8	3.8
Std. Deviation	0.40	0.44	0.41	0.41	0.41	0.40	0.40	0.41	0.40	0.41	0.41	0.40
% Alb >= 4.0	56%	58%	43%	49%	40%	35%	33%	37%	43%	42%	39%	39%



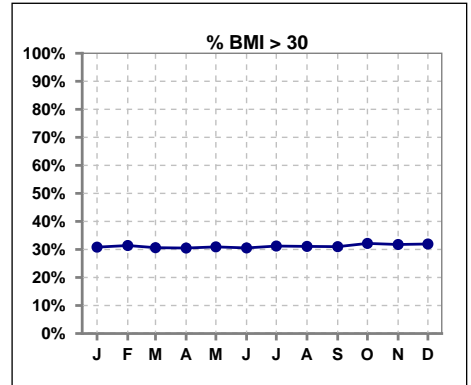
	Jan	Feb	Mar	Apr	May	Jun	Jul	Aug	Sep	Oct	Nov	Dec
# Albumin	1394	1398	1412	1417	1442	1444	1438	1434	1449	1454	1463	1475
# Albumin >= 3.5	1252	1245	1200	1233	1231	1199	1181	1188	1261	1255	1232	1242
Pop. Mean	4.0	4.0	3.8	3.9	3.8	3.8	3.8	3.8	3.9	3.8	3.8	3.8
Std. Deviation	0.40	0.44	0.41	0.41	0.41	0.40	0.40	0.41	0.40	0.41	0.41	0.40
% Alb >= 3.5	90%	89%	85%	87%	85%	83%	82%	83%	87%	86%	84%	84%



	Jan	Feb	Mar	Apr	May	Jun	Jul	Aug	Sep	Oct	Nov	Dec
# BMI	1389	1394	1406	1409	1435	1444	1428	1424	1413	1443	1451	1465
# BMI >= 19	1320	1333	1340	1338	1365	1377	1360	1367	1351	1386	1394	1401
Pop. Mean	28	28	28	28	28	28	28	28	28	28	28	28
Std. Deviation	6.9	6.9	6.9	6.9	6.9	6.9	6.9	6.9	6.9	7.0	6.9	7.1
% BMI >= 19	95%	96%	95%	95%	95%	95%	95%	96%	96%	96%	96%	96%



	Jan	Feb	Mar	Apr	May	Jun	Jul	Aug	Sep	Oct	Nov	Dec
# BMI	1389	1394	1406	1409	1435	1444	1428	1424	1413	1443	1451	1465
# BMI > 30	428	438	431	430	444	441	446	443	438	464	461	468
Pop. Mean	28	28	28	28	28	28	28	28	28	28	28	28
Std. Deviation	6.9	6.9	6.9	6.9	6.9	6.9	6.9	6.9	6.9	7.0	6.9	7.1
% BMI > 30	31%	31%	31%	30%	31%	31%	31%	31%	31%	32%	32%	32%

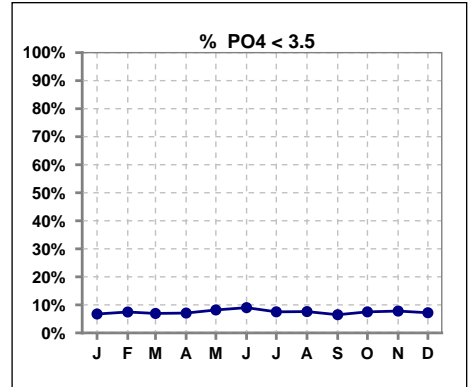


Methodology: a) All labs for 'Adequacy of Dialysis', 'Nutrition', 'Osteodystrophy', 'Anemia' and 'Diabetes' based on last value of month; b) BP's and #L processed are average of all values for month; c) Access data takes last access of month; d) Values for SGA and 'Infection Control' use most recent result.

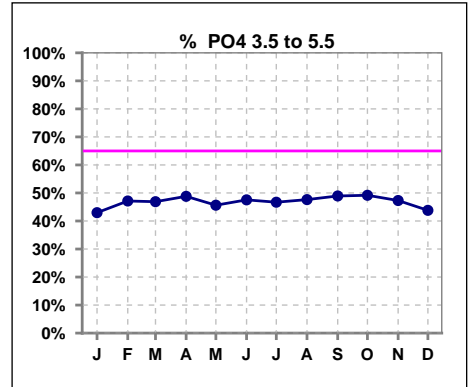
Lab methodology for PTH changed January 2012

**III. OSTEODYSTROPHY**

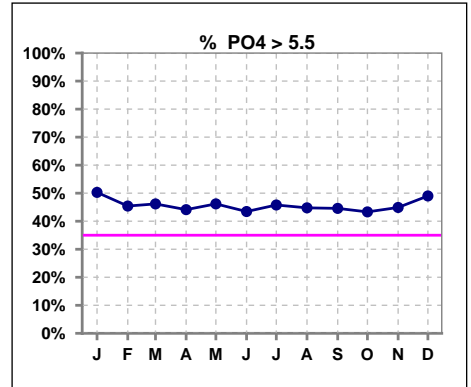
	Jan	Feb	Mar	Apr	May	Jun	Jul	Aug	Sep	Oct	Nov	Dec
# PO4	1394	1396	1412	1414	1442	1443	1437	1434	1449	1454	1463	1475
# PO4 < 3.5	94	104	98	100	118	130	108	109	94	109	114	106
Pop. Mean	5.8	5.7	5.7	5.7	5.7	5.6	5.7	5.6	5.6	5.6	5.6	5.8
Std. Deviation	1.86	1.89	1.83	1.81	1.89	1.81	1.83	1.80	1.78	1.81	1.85	1.86
% PO4 < 3.5	7%	7%	7%	7%	8%	9%	8%	8%	6%	7%	8%	7%



	Jan	Feb	Mar	Apr	May	Jun	Jul	Aug	Sep	Oct	Nov	Dec
# PO4	1394	1396	1412	1414	1442	1443	1437	1434	1449	1454	1463	1475
# PO4 3.5 to 5.5	599	658	662	690	658	686	671	683	709	715	692	646
Pop. Mean	5.8	5.7	5.7	5.7	5.7	5.6	5.7	5.6	5.6	5.6	5.6	5.8
Std. Deviation	1.86	1.89	1.83	1.81	1.89	1.81	1.83	1.80	1.78	1.81	1.85	1.86
% PO4 3.5 to 5.5	43%	47%	47%	49%	46%	48%	47%	48%	49%	49%	47%	44%



	Jan	Feb	Mar	Apr	May	Jun	Jul	Aug	Sep	Oct	Nov	Dec
# PO4	1394	1396	1412	1414	1442	1443	1437	1434	1449	1454	1463	1475
# PO4 > 5.5	701	634	652	624	666	627	658	642	646	630	657	723
Pop. Mean	5.8	5.7	5.7	5.7	5.7	5.6	5.7	5.6	5.6	5.6	5.6	5.8
Std. Deviation	1.86	1.89	1.83	1.81	1.89	1.81	1.83	1.80	1.78	1.81	1.85	1.86
% PO4 > 5.5	50%	45%	46%	44%	46%	43%	46%	45%	45%	43%	45%	49%

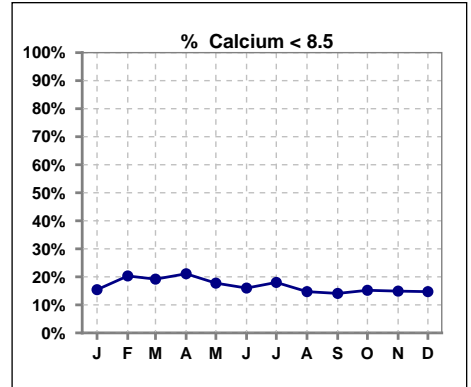


Methodology: a) All labs for 'Adequacy of Dialysis', 'Nutrition', 'Osteodystrophy', 'Anemia' and 'Diabetes' based on last value of month; b) BP's and #L processed are average of all values for month; c) Access data takes last access of month; d) Values for SGA and 'Infection Control' use most recent result.

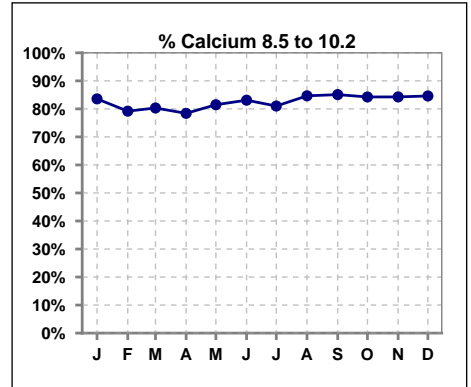
Lab methodology for PTH changed January 2012

**III. OSTEODYSTROPHY - CONT.**

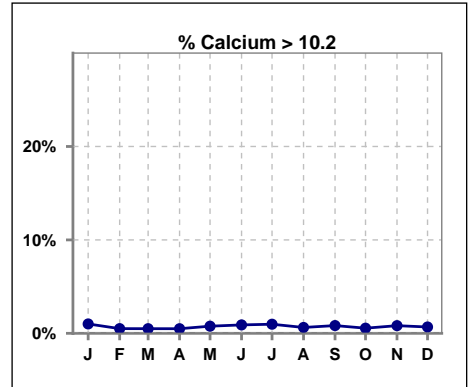
	Jan	Feb	Mar	Apr	May	Jun	Jul	Aug	Sep	Oct	Nov	Dec
# Calcium	1394	1398	1413	1417	1442	1444	1438	1434	1449	1454	1463	1475
# Calcium < 8.5	215	284	271	299	256	231	259	211	204	221	218	217
Pop. Mean	9.1	8.9	9.0	8.9	9.0	9.1	9.0	9.1	9.1	9.1	9.1	9.1
Std. Deviation	0.66	0.67	0.67	0.67	0.69	0.67	0.68	0.64	0.67	0.69	0.65	0.66
<b>% Calcium &lt; 8.5</b>	<b>15%</b>	<b>20%</b>	<b>19%</b>	<b>21%</b>	<b>18%</b>	<b>16%</b>	<b>18%</b>	<b>15%</b>	<b>14%</b>	<b>15%</b>	<b>15%</b>	<b>15%</b>



	Jan	Feb	Mar	Apr	May	Jun	Jul	Aug	Sep	Oct	Nov	Dec
# Calcium	1394	1398	1413	1417	1442	1444	1438	1434	1449	1454	1463	1475
# Calcium 8.5 to 10.2	1165	1107	1135	1111	1175	1200	1165	1214	1233	1225	1233	1248
Pop. Mean	9.1	8.9	9.0	8.9	9.0	9.1	9.0	9.1	9.1	9.1	9.1	9.1
Std. Deviation	0.66	0.67	0.67	0.67	0.69	0.67	0.68	0.64	0.67	0.69	0.65	0.66
<b>% Calcium 8.5 to 10.2</b>	<b>84%</b>	<b>79%</b>	<b>80%</b>	<b>78%</b>	<b>81%</b>	<b>83%</b>	<b>81%</b>	<b>85%</b>	<b>85%</b>	<b>84%</b>	<b>84%</b>	<b>85%</b>



	Jan	Feb	Mar	Apr	May	Jun	Jul	Aug	Sep	Oct	Nov	Dec
# Calcium	1394	1398	1413	1417	1442	1444	1438	1434	1449	1454	1463	1475
# Calcium > 10.2	14	7	7	7	11	13	14	9	12	8	12	10
Pop. Mean	9.1	8.9	9.0	8.9	9.0	9.1	9.0	9.1	9.1	9.1	9.1	9.1
Std. Deviation	0.66	0.67	0.67	0.67	0.69	0.67	0.68	0.64	0.67	0.69	0.65	0.66
<b>% Calcium &gt; 10.2</b>	<b>1%</b>	<b>1%</b>	<b>0%</b>	<b>0%</b>	<b>1%</b>	<b>1%</b>	<b>1%</b>	<b>1%</b>	<b>1%</b>	<b>1%</b>	<b>1%</b>	<b>1%</b>

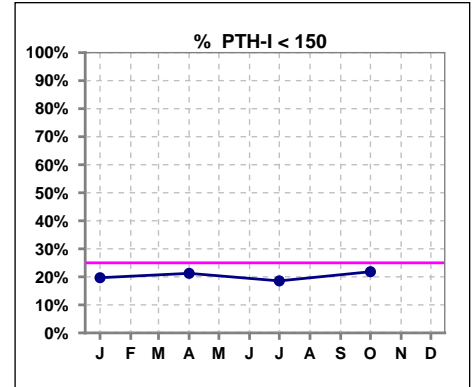


Methodology: a) All labs for 'Adequacy of Dialysis', 'Nutrition', 'Osteodystrophy', 'Anemia' and 'Diabetes' based on last value of month; b) BP's and #L processed are average of all values for month; c) Access data takes last access of month; d) Values for SGA and 'Infection Control' use most recent result.

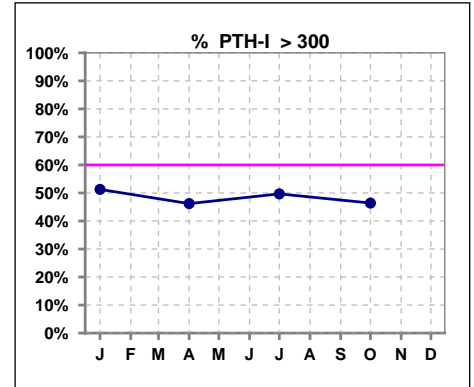
Lab methodology for PTH changed January 2012

**III. OSTEODYSTROPHY - CONT.**

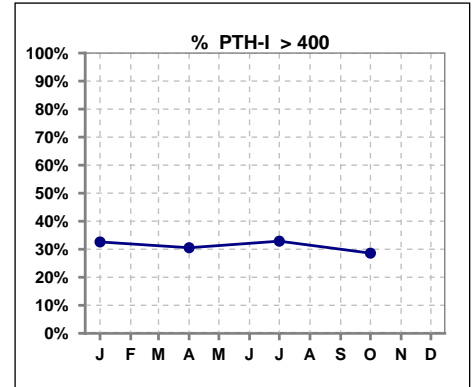
	Jan	Feb	Mar	Apr	May	Jun	Jul	Aug	Sep	Oct	Nov	Dec
# PTH-I	1377			1398			1417			1416		
# PTH-I < 150	271			297			263			309		
Pop. Mean	372			352			370			352		
Std. Deviation	323			317			324			326		
% PTH-I < 150	20%			21%			19%			22%		



	Jan	Feb	Mar	Apr	May	Jun	Jul	Aug	Sep	Oct	Nov	Dec
# PTH-I	1377			1398			1417			1416		
# PTH-I > 300	706			646			704			657		
Pop. Mean	372			352			370			352		
Std. Deviation	323			317			324			326		
% PTH-I > 300	51%			46%			50%			46%		



	Jan	Feb	Mar	Apr	May	Jun	Jul	Aug	Sep	Oct	Nov	Dec
# PTH-I	1377			1398			1417			1416		
# PTH-I > 400	449			427			466			405		
Pop. Mean	372			352			370			352		
Std. Deviation	323			317			324			326		
% PTH-I > 400	33%			31%			33%			29%		

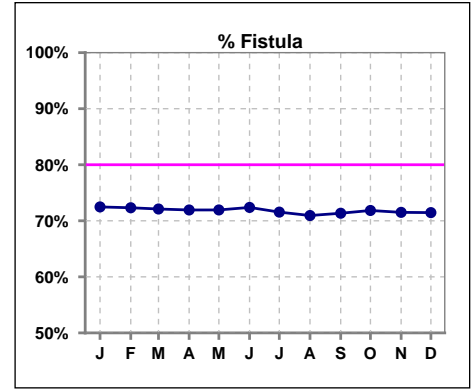


Methodology: a) All labs for 'Adequacy of Dialysis', 'Nutrition', 'Osteodystrophy', 'Anemia' and 'Diabetes' based on last value of month; b) BP's and #L processed are average of all values for month; c) Access data takes last access of month; d) Values for SGA and 'Infection Control' use most recent result.

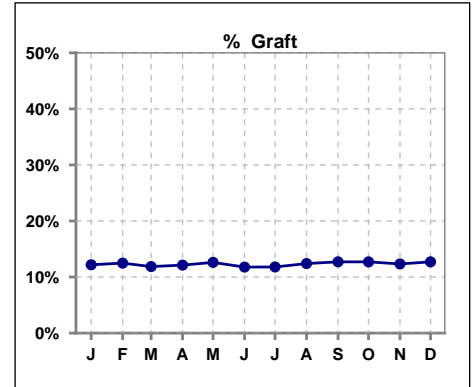


**IV. ACCESS**

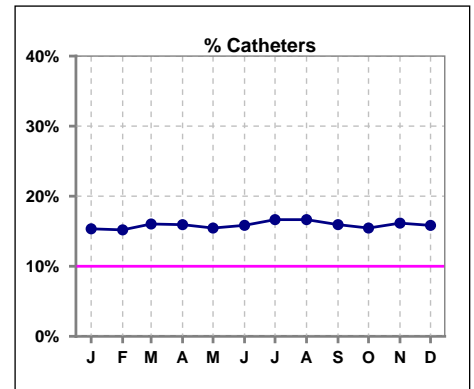
	Jan	Feb	Mar	Apr	May	Jun	Jul	Aug	Sep	Oct	Nov	Dec
<b># Access</b>	1395	1401	1416	1418	1443	1451	1441	1435	1424	1456	1467	1440
<b># Fistula</b>	1011	1014	1021	1020	1038	1051	1031	1018	1016	1046	1049	1029
<b>% Fistula</b>	72%	72%	72%	72%	72%	72%	72%	71%	71%	72%	72%	71%



	Jan	Feb	Mar	Apr	May	Jun	Jul	Aug	Sep	Oct	Nov	Dec
<b># Access</b>	1395	1401	1416	1418	1443	1451	1441	1435	1424	1456	1467	1440
<b># Graft</b>	170	175	168	172	182	171	170	178	181	185	181	183
<b>% Graft</b>	12%	12%	12%	12%	13%	12%	12%	12%	13%	13%	12%	13%



	Jan	Feb	Mar	Apr	May	Jun	Jul	Aug	Sep	Oct	Nov	Dec
<b># Access</b>	1395	1401	1416	1418	1443	1451	1441	1435	1424	1456	1467	1440
<b># Catheters</b>	214	213	227	226	223	230	240	239	227	225	237	228
<b>% Catheters</b>	15%	15%	16%	16%	15%	16%	17%	17%	16%	15%	16%	16%



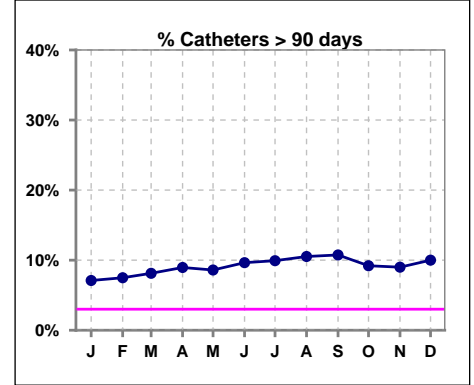
Methodology: a) All labs for 'Adequacy of Dialysis', 'Nutrition', 'Osteodystrophy', 'Anemia' and 'Diabetes' based on last value of month; b) BP's and #L processed are average of all values for month; c) Access data takes last access of month; d) Values for SGA and 'Infection Control' use most recent result.

**IV. ACCESS - CONT.**

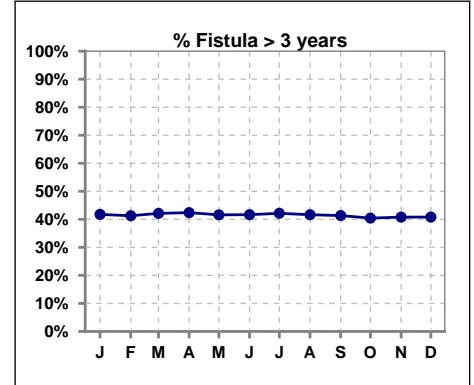
**Catheters > 90 days**

	Jan	Feb	Mar	Apr	May	Jun	Jul	Aug	Sep	Oct	Nov	Dec
<b># Access</b>	1395	1402	1416	1418	1443	1452	1441	1435	1424	1456	1467	1440
<b># Catheters</b>	99	105	115	127	124	140	143	151	153	134	132	144
<b>% Catheters</b>	7%	7%	8%	9%	9%	10%	10%	11%	11%	9%	9%	10%

**Definition:** Catheter in use on last treatment of the month



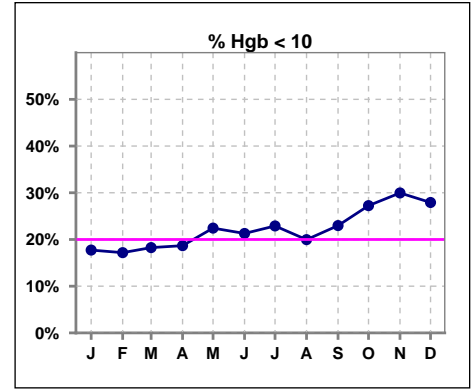
	Jan	Feb	Mar	Apr	May	Jun	Jul	Aug	Sep	Oct	Nov	Dec
<b># Fistula</b>	1020	1020	1023	1031	1041	1054	1044	1035	1045	1061	1069	1061
<b># Fistula &gt; 3 yrs</b>	426	421	431	437	433	439	440	431	432	429	436	433
<b>% Fistula &gt; 3 yrs</b>	42%	41%	42%	42%	42%	42%	42%	42%	41%	40%	41%	41%



**V. ANEMIA**

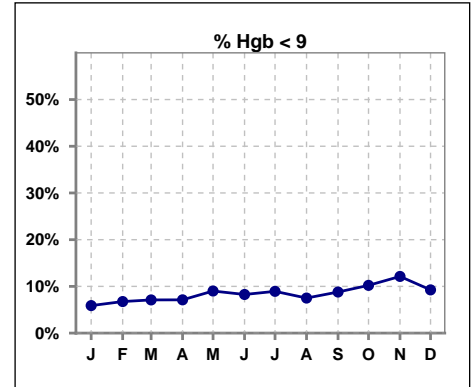
	Jan	Feb	Mar	Apr	May	Jun	Jul	Aug	Sep	Oct	Nov	Dec
# Hgb	1173	1170	1183	1194	1177	1198	1175	1147	1171	1204	1245	1243
# Hgb < 10	208	201	216	223	264	255	269	229	269	328	373	347
Pop. Mean	10.8	10.9	10.8	10.8	10.6	10.7	10.6	10.7	10.6	10.5	10.4	10.4
Std. Deviation	1.1	1.1	1.1	1.1	1.1	1.2	1.1	1.1	1.2	1.1	1.2	1.1
% Hgb < 10	18%	17%	18%	19%	22%	21%	23%	20%	23%	27%	30%	28%

Note: Excludes patients who received no ESA in month.



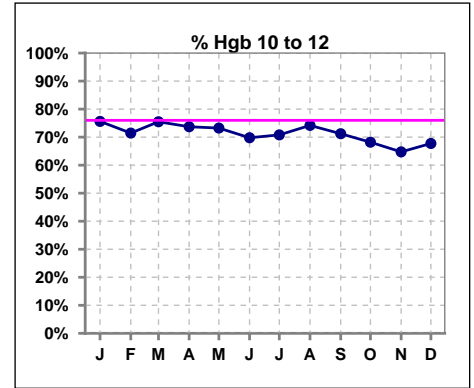
	Jan	Feb	Mar	Apr	May	Jun	Jul	Aug	Sep	Oct	Nov	Dec
# Hgb	1173	1170	1183	1194	1177	1198	1175	1147	1171	1204	1245	1243
# Hgb < 9	69	79	84	85	106	99	105	86	103	123	151	115
Pop. Mean	10.8	10.9	10.8	10.8	10.6	10.7	10.6	10.7	10.6	10.5	10.4	10.4
Std. Deviation	1.1	1.1	1.1	1.1	1.1	1.2	1.1	1.1	1.2	1.1	1.2	1.1
% Hgb < 9	6%	7%	7%	7%	9%	8%	9%	7%	9%	10%	12%	9%

Note: Excludes patients who received no ESA in month.



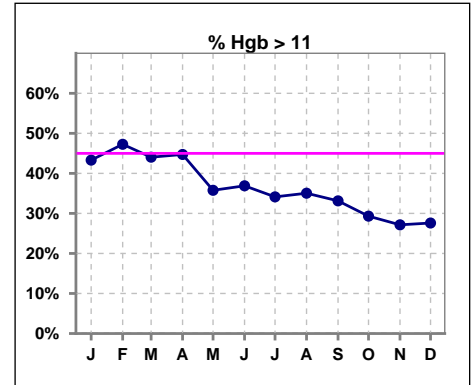
	Jan	Feb	Mar	Apr	May	Jun	Jul	Aug	Sep	Oct	Nov	Dec
# Hgb	1173	1170	1183	1194	1177	1198	1175	1147	1171	1204	1245	1243
# Hgb 10 to 12	887	836	893	880	862	836	832	851	834	821	806	842
Pop. Mean	10.8	10.9	10.8	10.8	10.6	10.7	10.6	10.7	10.6	10.5	10.4	10.4
Std. Deviation	1.1	1.1	1.1	1.1	1.1	1.2	1.1	1.1	1.2	1.1	1.2	1.1
% Hgb 10 to 12	76%	71%	75%	74%	73%	70%	71%	74%	71%	68%	65%	68%

Note: Excludes patients who received no ESA in month.



	Jan	Feb	Mar	Apr	May	Jun	Jul	Aug	Sep	Oct	Nov	Dec
# Hgb	1173	1170	1183	1194	1177	1198	1175	1147	1171	1204	1245	1243
# Hgb > 11	508	553	521	534	421	442	401	402	388	353	338	343
Pop. Mean	10.8	10.9	10.8	10.8	10.6	10.7	10.6	10.7	10.6	10.5	10.4	10.4
Std. Deviation	1.1	1.1	1.1	1.1	1.1	1.2	1.1	1.1	1.2	1.1	1.2	1.1
% Hgb > 11	43%	47%	44%	45%	36%	37%	34%	35%	33%	29%	27%	28%

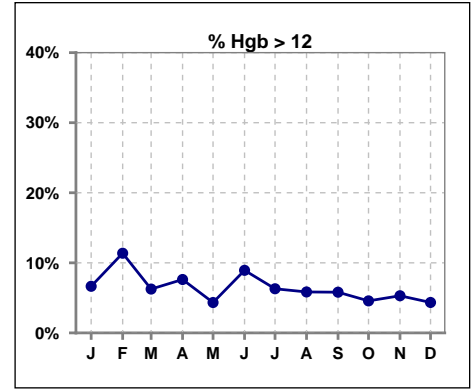
Note: Excludes patients who received no ESA in month.



**V. ANEMIA - CONT.**

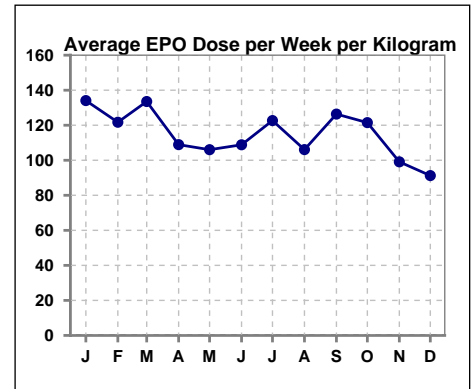
	Jan	Feb	Mar	Apr	May	Jun	Jul	Aug	Sep	Oct	Nov	Dec
# Hgb	1173	1170	1183	1194	1177	1198	1175	1147	1171	1204	1245	1243
# Hgb > 12	78	133	74	91	51	107	74	67	68	55	66	54
Pop. Mean	10.8	10.9	10.8	10.8	10.6	10.7	10.6	10.7	10.6	10.5	10.4	10.4
Std. Deviation	1.1	1.1	1.1	1.1	1.1	1.2	1.1	1.1	1.2	1.1	1.2	1.1
% Hgb > 12	7%	11%	6%	8%	4%	9%	6%	6%	6%	5%	5%	4%

Note: Excludes patients who received no ESA in month.



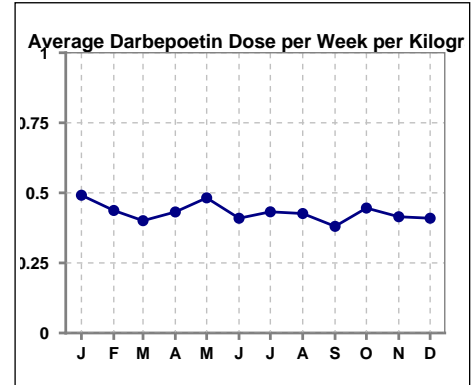
**Average EPO Dose per Week per Kilogram**

	Jan	Feb	Mar	Apr	May	Jun	Jul	Aug	Sep	Oct	Nov	Dec
# Average EPO	134.1	121.7	133.5	108.9	106.0	108.8	122.7	106.1	126.4	121.5	99.1	91.3



**Average Darbepoetin Dose per Week per Kilogram**

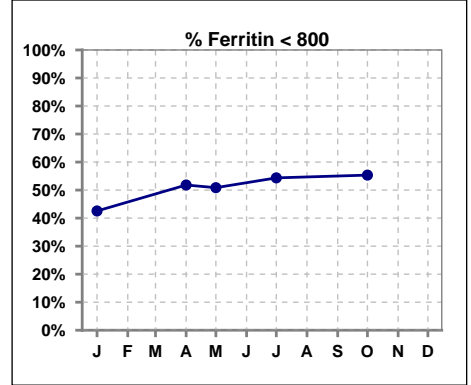
	Jan	Feb	Mar	Apr	May	Jun	Jul	Aug	Sep	Oct	Nov	Dec
# Average Darbepoetin	0.5	0.4	0.4	0.4	0.5	0.4	0.4	0.4	0.4	0.4	0.4	0.4



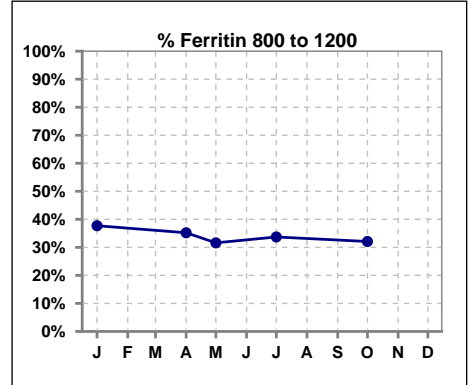
**V. ANEMIA - CONT.**

**Iron Profile**

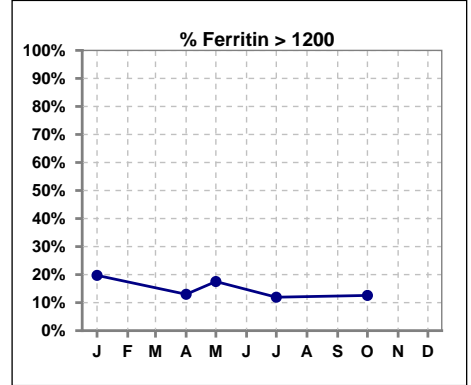
	Jan	Feb	Mar	Apr	May	Jun	Jul	Aug	Sep	Oct	Nov	Dec
# Ferritin	1384			1403	348		1433			1440		
# Ferritin < 800	589			727	177		779			797		
Pop. Mean	900			826	844		823			815		
Std. Deviation	485			493	452		656			530		
<b>% Ferritin &lt; 800</b>	<b>43%</b>			<b>52%</b>	<b>51%</b>		<b>54%</b>			<b>55%</b>		



	Jan	Feb	Mar	Apr	May	Jun	Jul	Aug	Sep	Oct	Nov	Dec
# Ferritin	1384			1403	348		1433			1440		
# Ferritin 800 to 1200	522			494	110		483			462		
Pop. Mean	900			826	844		823			815		
Std. Deviation	485			493	452		656			530		
<b>% Ferritin 800 to 1200</b>	<b>38%</b>			<b>35%</b>	<b>32%</b>		<b>34%</b>			<b>32%</b>		



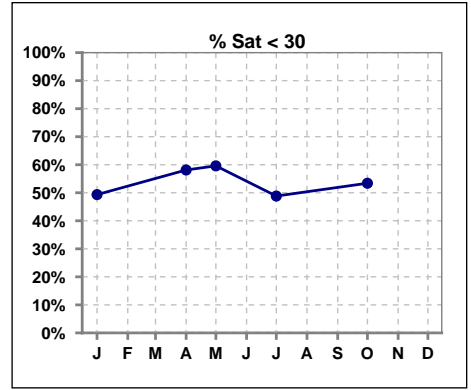
	Jan	Feb	Mar	Apr	May	Jun	Jul	Aug	Sep	Oct	Nov	Dec
# Ferritin	1384			1403	348		1433			1440		
# Ferritin > 1200	273			182	61		171			181		
Pop. Mean	900			826	844		823			815		
Std. Deviation	485			493	452		656			530		
<b>% Ferritin &gt; 1200</b>	<b>20%</b>			<b>13%</b>	<b>18%</b>		<b>12%</b>			<b>13%</b>		



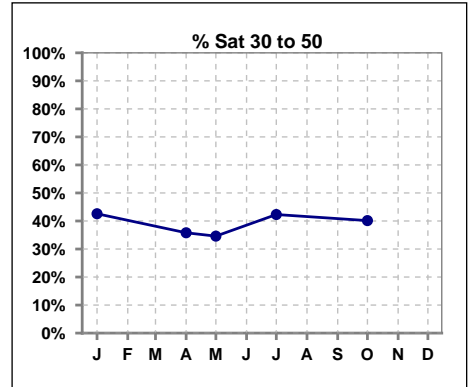
Methodology: a) All labs for 'Adequacy of Dialysis', 'Nutrition', 'Osteodystrophy', 'Anemia' and 'Diabetes' based on last value of month; b) BP's and #L processed are average of all values for month; c) Access data takes last access of month; d) Values for SGA and 'Infection Control' use most recent result.

**V. ANEMIA - CONT.**

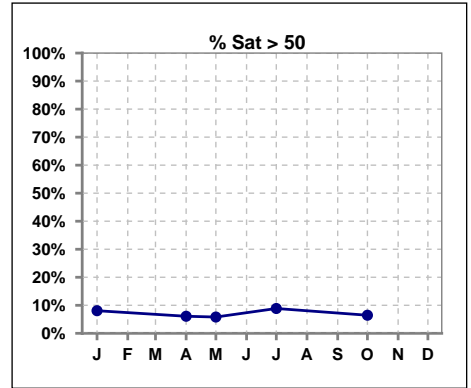
	Jan	Feb	Mar	Apr	May	Jun	Jul	Aug	Sep	Oct	Nov	Dec
# % Sat	1376			1397	344		1411			1425		
# % Sat < 30	679			812	205		689			761		
Pop. Mean	32			29	29		32			30		
Std. Deviation	13			13	13		13			13		
% % Sat < 30	49%			58%	60%		49%			53%		



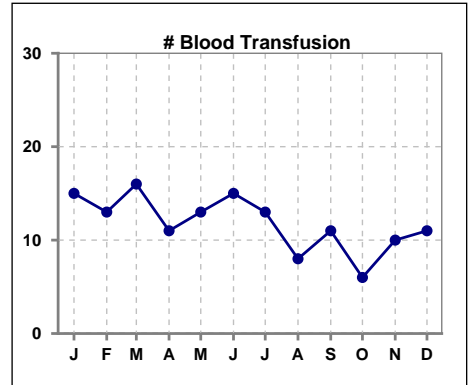
	Jan	Feb	Mar	Apr	May	Jun	Jul	Aug	Sep	Oct	Nov	Dec
# % Sat	1376			1397	344		1411			1425		
# % Sat 30 to 50	586			500	119		597			572		
Pop. Mean	32			29	29		32			30		
Std. Deviation	13			13	13		13			13		
% % Sat 30 to 50	43%			36%	35%		42%			40%		



	Jan	Feb	Mar	Apr	May	Jun	Jul	Aug	Sep	Oct	Nov	Dec
# % Sat	1376			1397	344		1411			1425		
# % Sat > 50	111			85	20		125			92		
Pop. Mean	32			29	29		32			30		
Std. Deviation	13			13	13		13			13		
% % Sat > 50	8%			6%	6%		9%			6%		



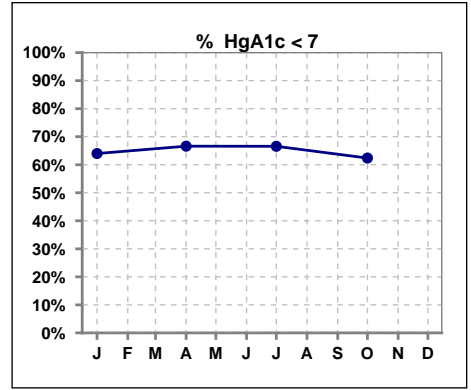
	Jan	Feb	Mar	Apr	May	Jun	Jul	Aug	Sep	Oct	Nov	Dec
# Patient	1403	1408	1423	1427	1448	1455	1446	1444	1459	1463	1472	1486
# Blood Transfusion	15	13	16	11	13	15	13	8	11	6	10	11



Methodology: a) All labs for 'Adequacy of Dialysis', 'Nutrition', 'Osteodystrophy', 'Anemia' and 'Diabetes' based on last value of month; b) BP's and #L processed are average of all values for month; c) Access data takes last access of month; d) Values for SGA and 'Infection Control' use most recent result.

**VI. Diabetes**

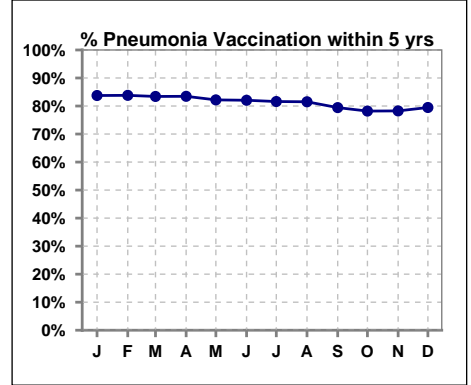
	Jan	Feb	Mar	Apr	May	Jun	Jul	Aug	Sep	Oct	Nov	Dec
# HgA1c	786			788			799			787		
# HgA1c < 7	503			525			532			491		
Pop. Mean	6.7			6.7			6.7			6.9		
Std. Deviation	1.46			1.48			1.48			1.55		
<b>% HgA1c &lt; 7</b>	<b>64%</b>			<b>67%</b>			<b>67%</b>			<b>62%</b>		



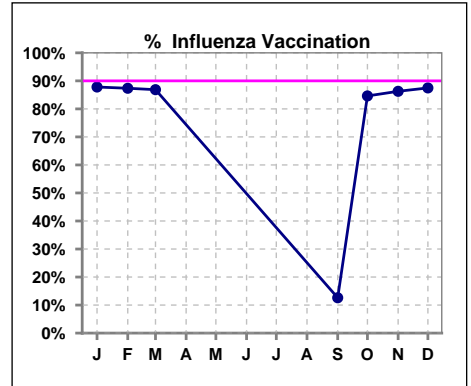
**VII. Infection Control**

**Pneumonia vaccination within the past five years**

	Jan	Feb	Mar	Apr	May	Jun	Jul	Aug	Sep	Oct	Nov	Dec
<b># Patient</b>	1403	1408	1423	1427	1448	1455	1446	1444	1459	1463	1472	1486
<b># Pneumonia</b>	1175	1180	1187	1191	1190	1194	1180	1177	1159	1144	1152	1181
<b>% Pneumonia</b>	84%	84%	83%	83%	82%	82%	82%	82%	79%	78%	78%	79%



	Jan	Feb	Mar	Apr	May	Jun	Jul	Aug	Sep	Oct	Nov	Dec
<b># Patient</b>	1403	1408	1423						1459	1463	1464	1486
<b># Influenza</b>	1232	1230	1236						184	1238	1263	1300
<b>% Influenza</b>	88%	87%	87%						13%	85%	86%	87%

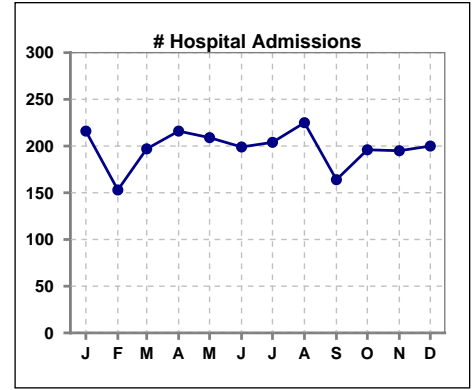


Methodology: a) All labs for 'Adequacy of Dialysis', 'Nutrition', 'Osteodystrophy', 'Anemia' and 'Diabetes' based on last value of month; b) BP's and #L processed are average of all values for month; c) Access data takes last access of month; d) Values for SGA and 'Infection Control' use most recent result.

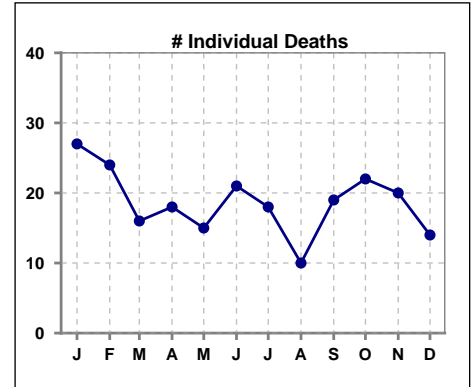


**VIII. Outcome measures**

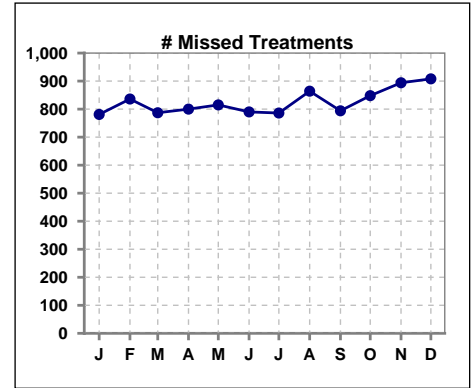
	Jan	Feb	Mar	Apr	May	Jun	Jul	Aug	Sep	Oct	Nov	Dec
<b># Patient</b>	1403	1408	1423	1427	1448	1455	1446	1444	1459	1463	1472	1486
<b># Hospital Admissions</b>	216	153	197	216	209	199	204	225	164	196	195	200



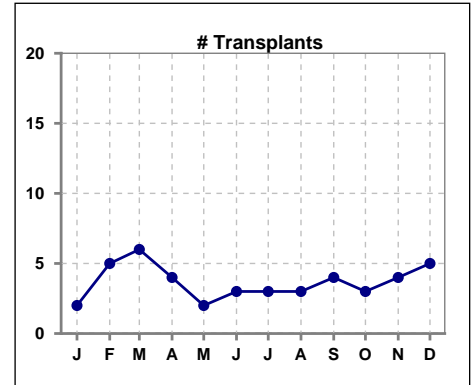
	Jan	Feb	Mar	Apr	May	Jun	Jul	Aug	Sep	Oct	Nov	Dec
<b># Patient</b>	1403	1408	1423	1427	1448	1455	1446	1444	1459	1463	1472	1486
<b># Individual Deaths</b>	27	24	16	18	15	21	18	10	19	22	20	14



	Jan	Feb	Mar	Apr	May	Jun	Jul	Aug	Sep	Oct	Nov	Dec
<b># Patient</b>	1403	1408	1423	1427	1448	1455	1446	1444	1459	1463	1472	1486
<b># Missed Treatments</b>	781	836	787	800	815	790	786	864	794	848	894	908



	Jan	Feb	Mar	Apr	May	Jun	Jul	Aug	Sep	Oct	Nov	Dec
<b># Patient</b>	1403	1408	1423	1427	1448	1455	1446	1444	1459	1463	1472	1486
<b># Transplants</b>	2	5	6	4	2	3	3	3	4	3	4	5



Methodology: a) All labs for 'Adequacy of Dialysis', 'Nutrition', 'Osteodystrophy', 'Anemia' and 'Diabetes' based on last value of month; b) BP's and #L processed are average of all values for month; c) Access data takes last access of month; d) Values for SGA and 'Infection Control' use most recent result.