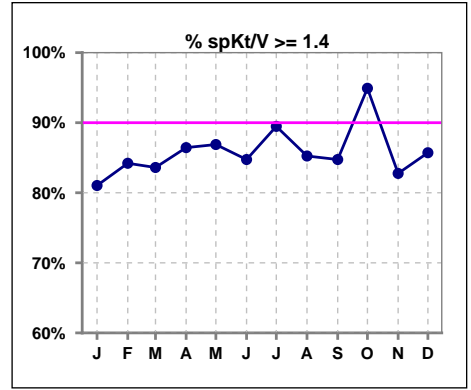
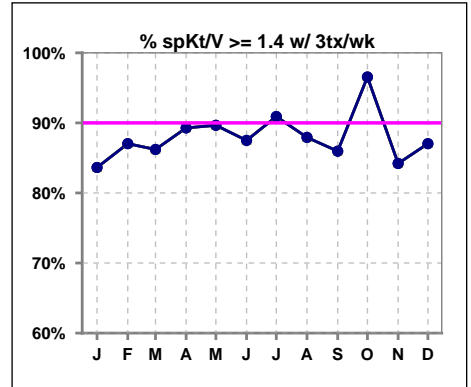


I. ADEQUACY OF DIALYSIS

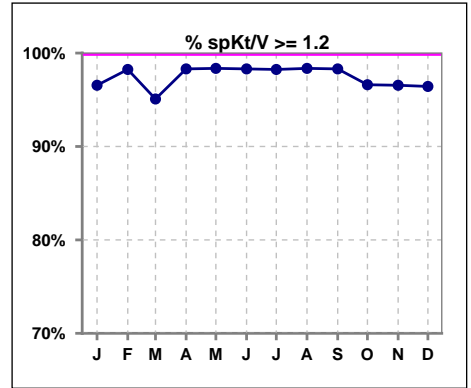
	Jan	Feb	Mar	Apr	May	Jun	Jul	Aug	Sep	Oct	Nov	Dec
# spKt/V	58	57	61	59	61	59	57	61	59	59	58	56
# spKt/V >= 1.4	47	48	51	51	53	50	51	52	50	56	48	48
Pop. Mean	1.67	1.70	1.69	1.71	1.71	1.72	1.75	1.70	1.71	1.70	1.64	1.67
Std. Deviation	0.29	0.33	0.38	0.33	0.32	0.31	0.31	0.32	0.34	0.28	0.30	0.33
% spKt/V >= 1.4	81%	84%	84%	86%	87%	85%	89%	85%	85%	95%	83%	86%



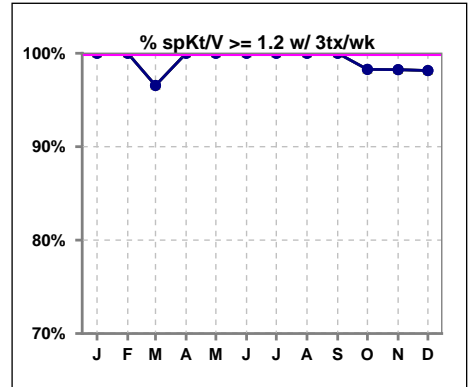
	Jan	Feb	Mar	Apr	May	Jun	Jul	Aug	Sep	Oct	Nov	Dec
# spKt/V w/ 3tx/wk	55	54	58	56	58	56	55	58	57	58	57	54
# spKt/V >= 1.4 w/3tx/wk	46	47	50	50	52	49	50	51	49	56	48	47
Pop. Mean	1.70	1.72	1.69	1.70	1.72	1.73	1.76	1.71	1.73	1.71	1.65	1.66
Std. Deviation	0.27	0.32	0.34	0.28	0.30	0.29	0.30	0.30	0.33	0.27	0.29	0.30
% >= 1.4 w/3tx/wk	84%	87%	86%	89%	90%	88%	91%	88%	86%	97%	84%	87%



	Jan	Feb	Mar	Apr	May	Jun	Jul	Aug	Sep	Oct	Nov	Dec
# spKt/V	58	57	61	59	61	59	57	61	59	59	58	56
# spKt/V >= 1.2	56	56	58	58	60	58	56	60	58	57	56	54
Pop. Mean	1.67	1.70	1.69	1.71	1.71	1.72	1.75	1.70	1.71	1.70	1.64	1.67
Std. Deviation	0.29	0.33	0.38	0.33	0.32	0.31	0.31	0.32	0.34	0.28	0.30	0.33
% spKt/V >= 1.2	97%	98%	95%	98%	98%	98%	98%	98%	98%	97%	97%	96%



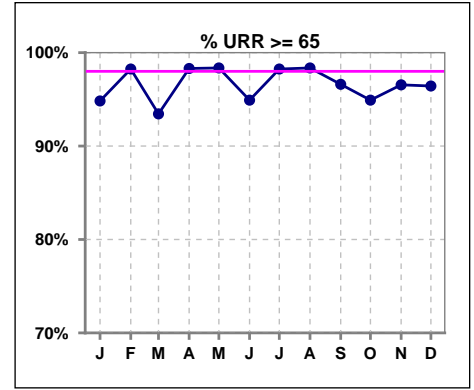
	Jan	Feb	Mar	Apr	May	Jun	Jul	Aug	Sep	Oct	Nov	Dec
# spKt/V w/ 3tx/wk	55	54	58	56	58	56	55	58	57	58	57	54
# spKt/V >= 1.2 w/3tx/wk	55	54	56	56	58	56	55	58	57	57	56	53
Pop. Mean	1.70	1.72	1.69	1.70	1.72	1.73	1.76	1.71	1.73	1.71	1.65	1.66
Std. Deviation	0.27	0.32	0.34	0.28	0.30	0.29	0.30	0.30	0.33	0.27	0.29	0.30
% >= 1.2 w/3tx/wk	100%	100%	97%	100%	100%	100%	100%	100%	100%	98%	98%	98%



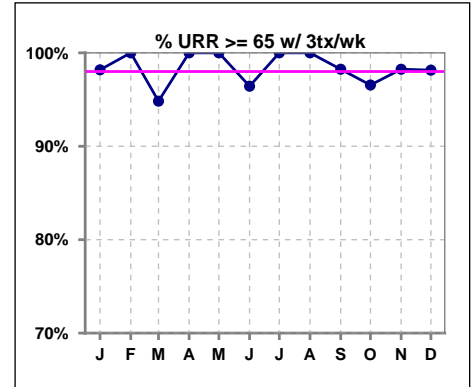
Methodology: a) All labs for 'Adequacy of Dialysis', 'Nutrition', 'Osteodystrophy', 'Anemia' and 'Diabetes' based on last value of month; b) BP's and #L processed are average of all values for month; c) Access data takes last access of month; d) Values for SGA and 'Infection Control' use most recent result.

I. ADEQUACY OF DIALYSIS - CONT.

	Jan	Feb	Mar	Apr	May	Jun	Jul	Aug	Sep	Oct	Nov	Dec
# URR	58	57	61	59	61	59	57	61	59	59	58	56
# URR >= 65	55	56	57	58	60	56	56	60	57	56	56	54
Pop. Mean	76	76	76	77	77	77	77	77	77	77	75	76
Std. Deviation	6.11	6.27	7.73	5.88	5.86	5.58	5.77	5.85	6.41	5.34	6.27	6.52
% URR >= 65	95%	98%	93%	98%	98%	95%	98%	98%	97%	95%	97%	96%



	Jan	Feb	Mar	Apr	May	Jun	Jul	Aug	Sep	Oct	Nov	Dec
# URR w/ 3tx/wk	55	54	58	56	58	56	55	58	57	58	57	54
# URR>=65 w/ 3tx/wk	54	54	55	56	58	54	55	58	56	56	56	53
Pop. Mean	77	77	76	77	77	77	78	77	77	77	76	76
Std. Deviation	5.24	5.63	7.29	5.28	5.33	5.15	5.22	5.32	5.93	4.86	5.74	5.91
% URR>=65 w/ 3tx/wk	98%	100%	95%	100%	100%	96%	100%	100%	98%	97%	98%	98%

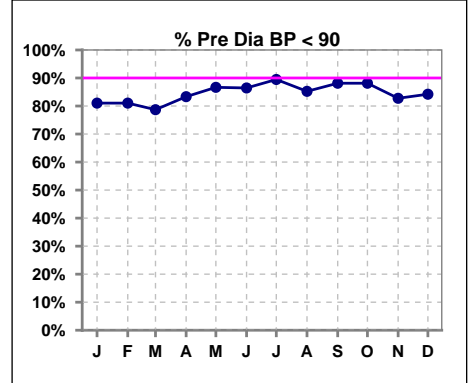


Methodology: a) All labs for 'Adequacy of Dialysis', 'Nutrition', 'Osteodystrophy', 'Anemia' and 'Diabetes' based on last value of month; b) BP's and #L processed are average of all values for month; c) Access data takes last access of month; d) Values for SGA and 'Infection Control' use most recent result.

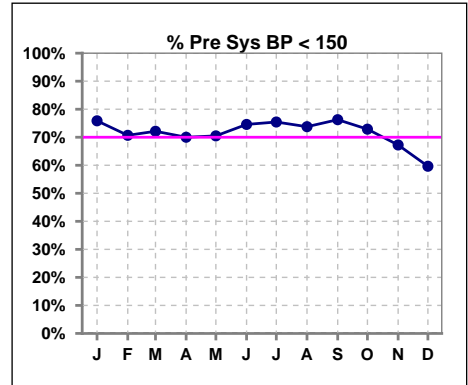
I. ADEQUACY OF DIALYSIS - CONT.

Blood Pressure Control (Pre)

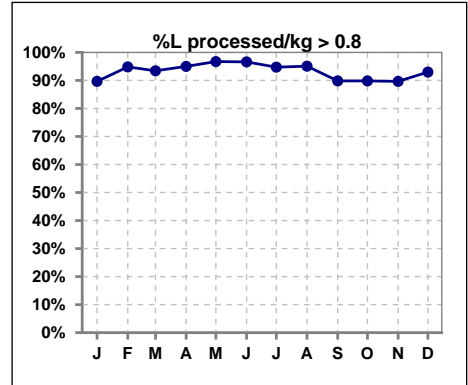
	Jan	Feb	Mar	Apr	May	Jun	Jul	Aug	Sep	Oct	Nov	Dec
# Pre Dia BP	58	58	61	60	60	59	57	61	59	59	58	57
# Pre Dia BP < 90	47	47	48	50	52	51	51	52	52	52	48	48
Pop. Mean	75	76	76	75	74	74	74	75	75	76	77	78
Std. Deviation	15.9	16.7	16.4	16.2	15.0	15.0	13.8	15.0	15.1	15.7	15.0	14.7
% Pre Dia BP < 90	81%	81%	79%	83%	87%	86%	89%	85%	88%	88%	83%	84%



	Jan	Feb	Mar	Apr	May	Jun	Jul	Aug	Sep	Oct	Nov	Dec
# Pre Sys BP	58	58	61	60	61	59	57	61	59	59	58	57
# Pre Sys BP < 150	44	41	44	42	43	44	43	45	45	43	39	34
Pop. Mean	138	140	140	140	139	138	138	140	138	140	141	142
Std. Deviation	22.0	22.5	22.0	22.4	24.2	21.3	19.5	20.9	20.9	23.1	21.8	21.0
%Pre Sys BP <150	76%	71%	72%	70%	70%	75%	75%	74%	76%	73%	67%	60%



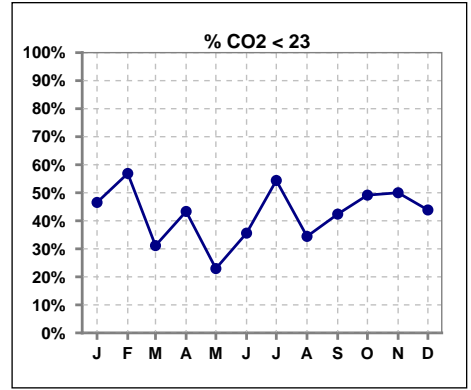
	Jan	Feb	Mar	Apr	May	Jun	Jul	Aug	Sep	Oct	Nov	Dec
# L processed/kg	58	58	61	60	61	59	57	61	59	59	58	57
# L processed/kg>0.8	52	55	57	57	59	57	54	58	53	53	52	53
Pop. Mean	1	1	1	1	1	1	1	1	1	1	1	1
Std. Deviation	0.3	0.2	0.3	0.2	0.3	0.3	0.3	0.3	0.3	0.3	0.3	0.3
% L processed/kg>0.8	90%	95%	93%	95%	97%	97%	95%	95%	90%	90%	90%	93%



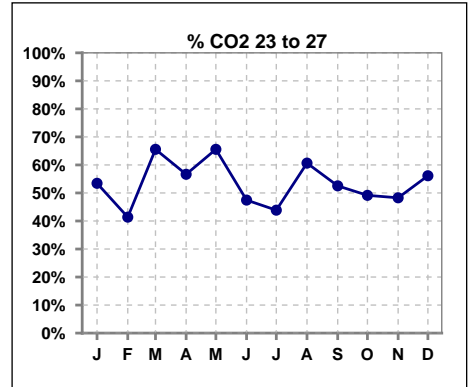
Methodology: a) All labs for 'Adequacy of Dialysis', 'Nutrition', 'Osteodystrophy', 'Anemia' and 'Diabetes' based on last value of month; b) BP's and #L processed are average of all values for month; c) Access data takes last access of month; d) Values for SGA and 'Infection Control' use most recent result.

I. ADEQUACY OF DIALYSIS - CONT.

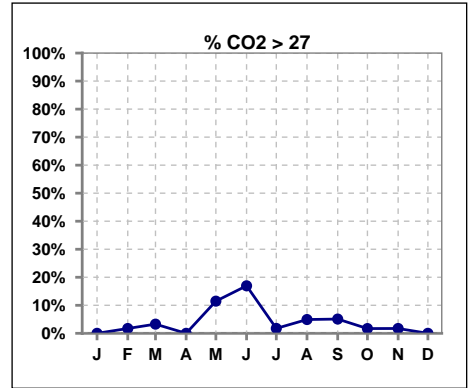
	Jan	Feb	Mar	Apr	May	Jun	Jul	Aug	Sep	Oct	Nov	Dec
# CO2	58	58	61	60	61	59	57	61	59	59	58	57
# CO2 < 23	27	33	19	26	14	21	31	21	25	29	29	25
Pop. Mean	22	22	23	23	24	24	22	23	23	23	23	23
Std. Deviation	2.82	2.57	2.34	2.04	3.20	3.53	3.42	2.57	3.09	2.40	2.93	2.82
% CO2 < 23	47%	57%	31%	43%	23%	36%	54%	34%	42%	49%	50%	44%



	Jan	Feb	Mar	Apr	May	Jun	Jul	Aug	Sep	Oct	Nov	Dec
# CO2	58	58	61	60	61	59	57	61	59	59	58	57
# CO2 23 to 27	31	24	40	34	40	28	25	37	31	29	28	32
Pop. Mean	22	22	23	23	24	24	22	23	23	23	23	23
Std. Deviation	2.82	2.57	2.34	2.04	3.20	3.53	3.42	2.57	3.09	2.40	2.93	2.82
% CO2 23 to 27	53%	41%	66%	57%	66%	47%	44%	61%	53%	49%	48%	56%



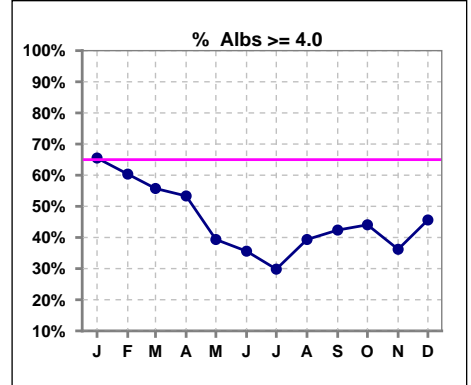
	Jan	Feb	Mar	Apr	May	Jun	Jul	Aug	Sep	Oct	Nov	Dec
# CO2	58	58	61	60	61	59	57	61	59	59	58	57
# CO2 > 27	0	1	2	0	7	10	1	3	3	1	1	0
Pop. Mean	22	22	23	23	24	24	22	23	23	23	23	23
Std. Deviation	2.82	2.57	2.34	2.04	3.20	3.53	3.42	2.57	3.09	2.40	2.93	2.82
% CO2 > 27	0%	2%	3%	0%	11%	17%	2%	5%	5%	2%	2%	0%



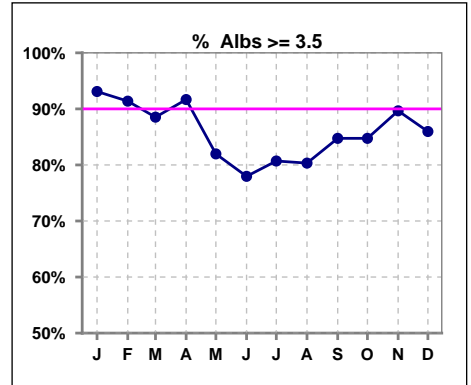
*Albumin values use BCG method - as of July 2001

II. NUTRITION

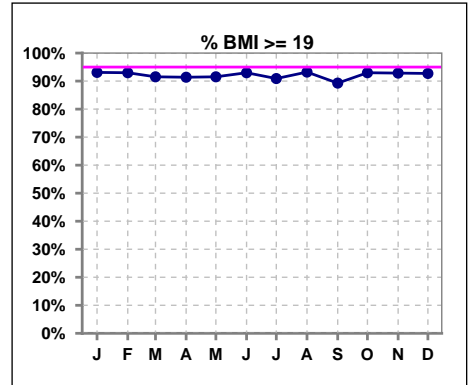
	Jan	Feb	Mar	Apr	May	Jun	Jul	Aug	Sep	Oct	Nov	Dec
# Albumin	58	58	61	60	61	59	57	61	59	59	58	57
# Albumin >= 4.0	38	35	34	32	24	21	17	24	25	26	21	26
Pop. Mean	4.0	4.1	3.9	3.9	3.8	3.8	3.7	3.8	3.8	3.9	3.8	3.8
Std. Deviation	0.33	0.44	0.42	0.38	0.42	0.47	0.44	0.44	0.43	0.40	0.41	0.42
% Alb >= 4.0	66%	60%	56%	53%	39%	36%	30%	39%	42%	44%	36%	46%



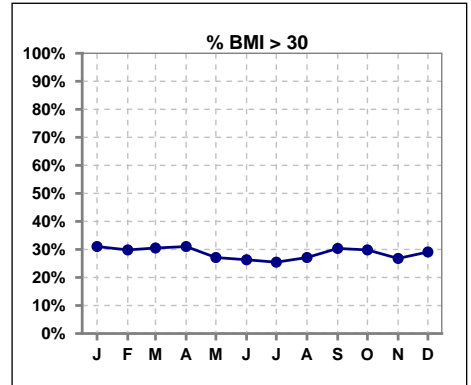
	Jan	Feb	Mar	Apr	May	Jun	Jul	Aug	Sep	Oct	Nov	Dec
# Albumin	58	58	61	60	61	59	57	61	59	59	58	57
# Albumin >= 3.5	54	53	54	55	50	46	46	49	50	50	52	49
Pop. Mean	4.0	4.1	3.9	3.9	3.8	3.8	3.7	3.8	3.8	3.9	3.8	3.8
Std. Deviation	0.33	0.44	0.42	0.38	0.42	0.47	0.44	0.44	0.43	0.40	0.41	0.42
% Alb >= 3.5	93%	91%	89%	92%	82%	78%	81%	80%	85%	85%	90%	86%



	Jan	Feb	Mar	Apr	May	Jun	Jul	Aug	Sep	Oct	Nov	Dec
# BMI	58	57	59	58	59	57	55	59	56	57	56	55
# BMI >= 19	54	53	54	53	54	53	50	55	50	53	52	51
Pop. Mean	27	27	27	27	26	26	26	26	27	27	27	26
Std. Deviation	6.0	5.9	5.8	6.0	5.8	5.9	6.2	6.2	6.5	5.8	5.5	5.6
% BMI >= 19	93%	93%	92%	91%	92%	93%	91%	93%	89%	93%	93%	93%



	Jan	Feb	Mar	Apr	May	Jun	Jul	Aug	Sep	Oct	Nov	Dec
# BMI	58	57	59	58	59	57	55	59	56	57	56	55
# BMI > 30	18	17	18	18	16	15	14	16	17	17	15	16
Pop. Mean	27	27	27	27	26	26	26	26	27	27	27	26
Std. Deviation	6.0	5.9	5.8	6.0	5.8	5.9	6.2	6.2	6.5	5.8	5.5	5.6
% BMI > 30	31%	30%	31%	31%	27%	26%	25%	27%	30%	30%	27%	29%

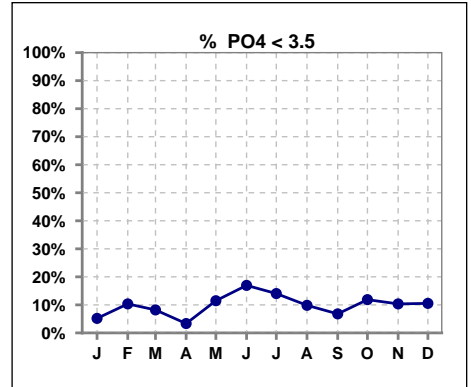


Methodology: a) All labs for 'Adequacy of Dialysis', 'Nutrition', 'Osteodystrophy', 'Anemia' and 'Diabetes' based on last value of month; b) BP's and #L processed are average of all values for month; c) Access data takes last access of month; d) Values for SGA and 'Infection Control' use most recent result.

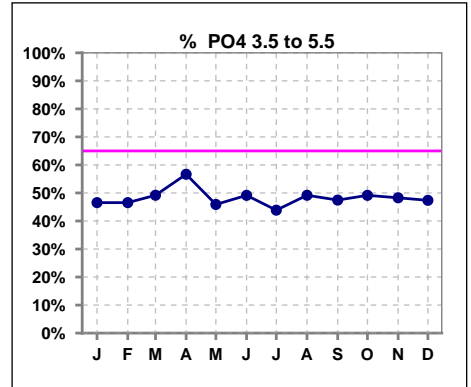
Lab methodology for PTH changed January 2012

III. OSTEODYSTROPHY

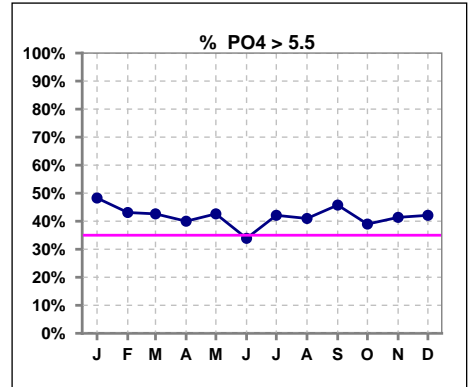
	Jan	Feb	Mar	Apr	May	Jun	Jul	Aug	Sep	Oct	Nov	Dec
# PO4	58	58	61	60	61	59	57	61	59	59	58	57
# PO4 < 3.5	3	6	5	2	7	10	8	6	4	7	6	6
Pop. Mean	5.7	5.5	5.5	5.3	5.3	5.1	5.5	5.4	5.5	5.4	5.4	5.5
Std. Deviation	1.87	1.90	1.65	1.30	1.54	1.89	2.17	1.73	1.88	1.82	1.75	1.89
% PO4 < 3.5	5%	10%	8%	3%	11%	17%	14%	10%	7%	12%	10%	11%



	Jan	Feb	Mar	Apr	May	Jun	Jul	Aug	Sep	Oct	Nov	Dec
# PO4	58	58	61	60	61	59	57	61	59	59	58	57
# PO4 3.5 to 5.5	27	27	30	34	28	29	25	30	28	29	28	27
Pop. Mean	5.7	5.5	5.5	5.3	5.3	5.1	5.5	5.4	5.5	5.4	5.4	5.5
Std. Deviation	1.87	1.90	1.65	1.30	1.54	1.89	2.17	1.73	1.88	1.82	1.75	1.89
% PO4 3.5 to 5.5	47%	47%	49%	57%	46%	49%	44%	49%	47%	49%	48%	47%



	Jan	Feb	Mar	Apr	May	Jun	Jul	Aug	Sep	Oct	Nov	Dec
# PO4	58	58	61	60	61	59	57	61	59	59	58	57
# PO4 > 5.5	28	25	26	24	26	20	24	25	27	23	24	24
Pop. Mean	5.7	5.5	5.5	5.3	5.3	5.1	5.5	5.4	5.5	5.4	5.4	5.5
Std. Deviation	1.87	1.90	1.65	1.30	1.54	1.89	2.17	1.73	1.88	1.82	1.75	1.89
% PO4 > 5.5	48%	43%	43%	40%	43%	34%	42%	41%	46%	39%	41%	42%

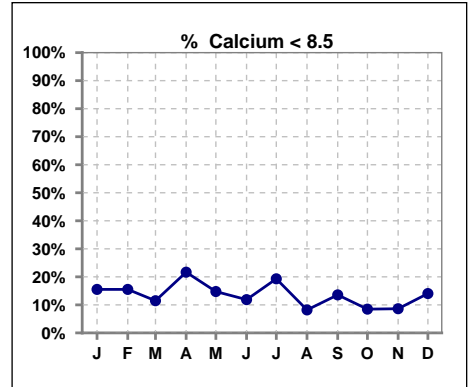


Methodology: a) All labs for 'Adequacy of Dialysis', 'Nutrition', 'Osteodystrophy', 'Anemia' and 'Diabetes' based on last value of month; b) BP's and #L processed are average of all values for month; c) Access data takes last access of month; d) Values for SGA and 'Infection Control' use most recent result.

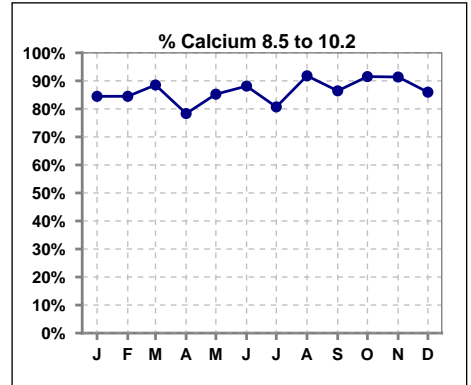
Lab methodology for PTH changed January 2012

III. OSTEODYSTROPHY - CONT.

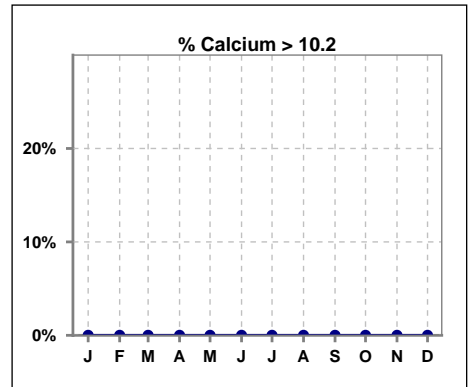
	Jan	Feb	Mar	Apr	May	Jun	Jul	Aug	Sep	Oct	Nov	Dec
# Calcium	58	58	61	60	61	59	57	61	59	59	58	57
# Calcium < 8.5	9	9	7	13	9	7	11	5	8	5	5	8
Pop. Mean	9.1	9.0	9.0	8.9	9.1	9.0	9.0	9.2	9.2	9.1	9.1	9.1
Std. Deviation	0.52	0.59	0.52	0.57	0.59	0.64	0.62	0.61	0.60	0.58	0.60	0.57
% Calcium < 8.5	16%	16%	11%	22%	15%	12%	19%	8%	14%	8%	9%	14%



	Jan	Feb	Mar	Apr	May	Jun	Jul	Aug	Sep	Oct	Nov	Dec
# Calcium	58	58	61	60	61	59	57	61	59	59	58	57
# Calcium 8.5 to 10.2	49	49	54	47	52	52	46	56	51	54	53	49
Pop. Mean	9.1	9.0	9.0	8.9	9.1	9.0	9.0	9.2	9.2	9.1	9.1	9.1
Std. Deviation	0.52	0.59	0.52	0.57	0.59	0.64	0.62	0.61	0.60	0.58	0.60	0.57
% Calcium 8.5 to 10.2	84%	84%	89%	78%	85%	88%	81%	92%	86%	92%	91%	86%



	Jan	Feb	Mar	Apr	May	Jun	Jul	Aug	Sep	Oct	Nov	Dec
# Calcium	58	58	61	60	61	59	57	61	59	59	58	57
# Calcium > 10.2	0	0	0	0	0	0	0	0	0	0	0	0
Pop. Mean	9.1	9.0	9.0	8.9	9.1	9.0	9.0	9.2	9.2	9.1	9.1	9.1
Std. Deviation	0.52	0.59	0.52	0.57	0.59	0.64	0.62	0.61	0.60	0.58	0.60	0.57
% Calcium > 10.2	0%	0%	0%	0%	0%	0%	0%	0%	0%	0%	0%	0%

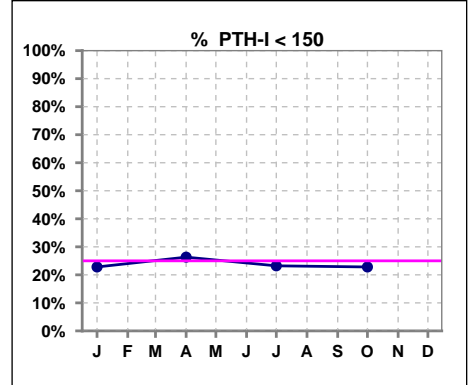


Methodology: a) All labs for 'Adequacy of Dialysis', 'Nutrition', 'Osteodystrophy', 'Anemia' and 'Diabetes' based on last value of month; b) BP's and #L processed are average of all values for month; c) Access data takes last access of month; d) Values for SGA and 'Infection Control' use most recent result.

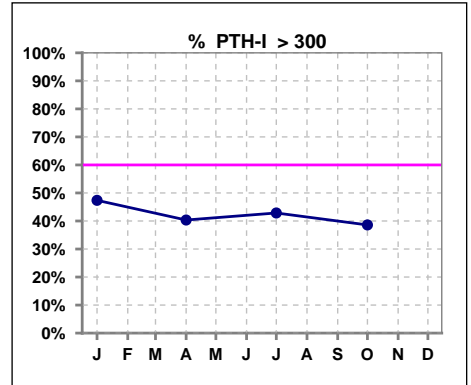
Lab methodology for PTH changed January 2012

III. OSTEODYSTROPHY - CONT.

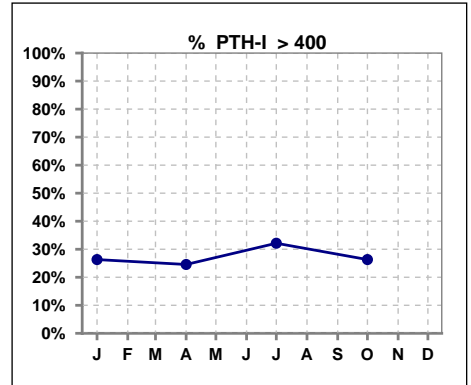
	Jan	Feb	Mar	Apr	May	Jun	Jul	Aug	Sep	Oct	Nov	Dec
# PTH-I	57			57			56			57		
# PTH-I < 150	13			15			13			13		
Pop. Mean	325			297			323			296		
Std. Deviation	238			209			256			204		
% PTH-I < 150	23%			26%			23%			23%		



	Jan	Feb	Mar	Apr	May	Jun	Jul	Aug	Sep	Oct	Nov	Dec
# PTH-I	57			57			56			57		
# PTH-I > 300	27			23			24			22		
Pop. Mean	325			297			323			296		
Std. Deviation	238			209			256			204		
% PTH-I > 300	47%			40%			43%			39%		



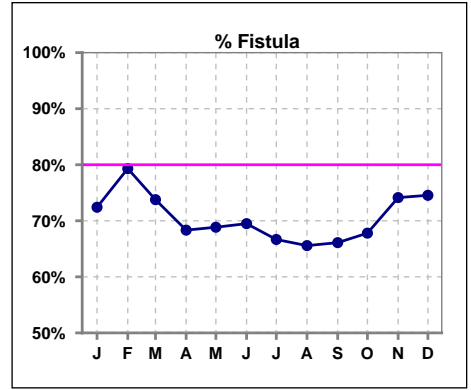
	Jan	Feb	Mar	Apr	May	Jun	Jul	Aug	Sep	Oct	Nov	Dec
# PTH-I	57			57			56			57		
# PTH-I > 400	15			14			18			15		
Pop. Mean	325			297			323			296		
Std. Deviation	238			209			256			204		
% PTH-I > 400	26%			25%			32%			26%		



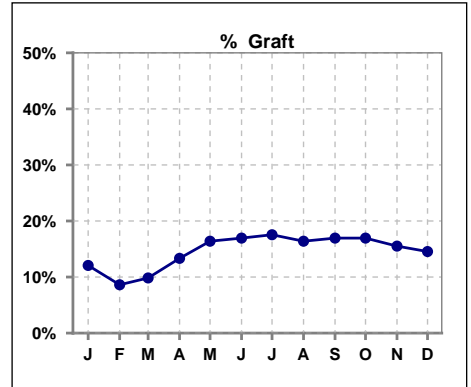
Methodology: a) All labs for 'Adequacy of Dialysis', 'Nutrition', 'Osteodystrophy', 'Anemia' and 'Diabetes' based on last value of month; b) BP's and #L processed are average of all values for month; c) Access data takes last access of month; d) Values for SGA and 'Infection Control' use most recent result.

IV. ACCESS

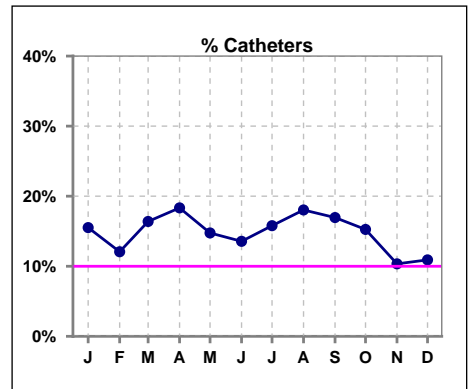
	Jan	Feb	Mar	Apr	May	Jun	Jul	Aug	Sep	Oct	Nov	Dec
# Access	58	58	61	60	61	59	57	61	59	59	58	55
# Fistula	42	46	45	41	42	41	38	40	39	40	43	41
% Fistula	72%	79%	74%	68%	69%	69%	67%	66%	66%	68%	74%	75%



	Jan	Feb	Mar	Apr	May	Jun	Jul	Aug	Sep	Oct	Nov	Dec
# Access	58	58	61	60	61	59	57	61	59	59	58	55
# Graft	7	5	6	8	10	10	10	10	10	10	9	8
% Graft	12%	9%	10%	13%	16%	17%	18%	16%	17%	17%	16%	15%



	Jan	Feb	Mar	Apr	May	Jun	Jul	Aug	Sep	Oct	Nov	Dec
# Access	58	58	61	60	61	59	57	61	59	59	58	55
# Catheters	9	7	10	11	9	8	9	11	10	9	6	6
% Catheters	16%	12%	16%	18%	15%	14%	16%	18%	17%	15%	10%	11%



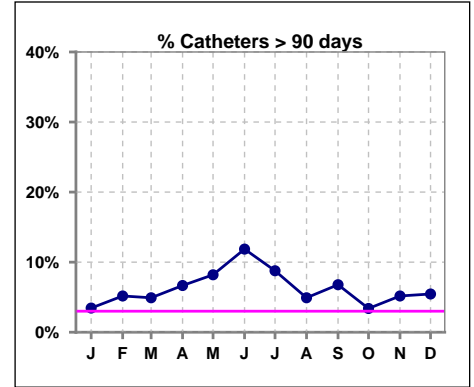
Methodology: a) All labs for 'Adequacy of Dialysis', 'Nutrition', 'Osteodystrophy', 'Anemia' and 'Diabetes' based on last value of month; b) BP's and #L processed are average of all values for month; c) Access data takes last access of month; d) Values for SGA and 'Infection Control' use most recent result.

IV. ACCESS - CONT.

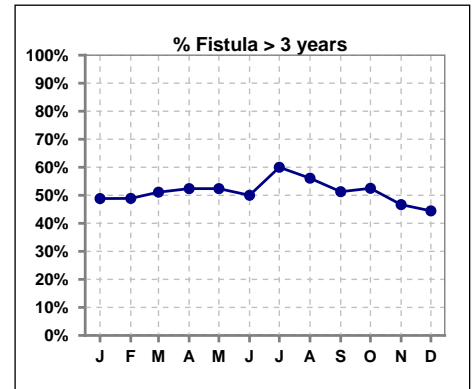
Catheters > 90 days

	Jan	Feb	Mar	Apr	May	Jun	Jul	Aug	Sep	Oct	Nov	Dec
# Access	58	58	61	60	61	59	57	61	59	59	58	55
# Catheters	2	3	3	4	5	7	5	3	4	2	3	3
% Catheters	3%	5%	5%	7%	8%	12%	9%	5%	7%	3%	5%	5%

Definition: Catheter in use on last treatment of the month



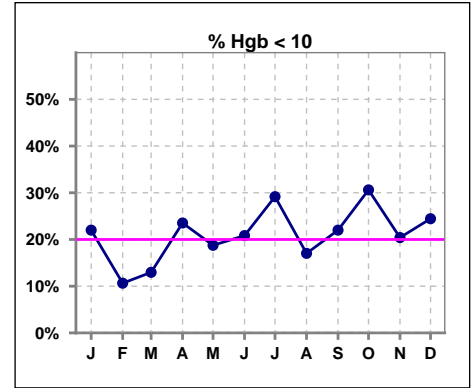
	Jan	Feb	Mar	Apr	May	Jun	Jul	Aug	Sep	Oct	Nov	Dec
# Fistula	43	45	45	42	42	42	40	41	39	40	45	45
# Fistula > 3 yrs	21	22	23	22	22	21	24	23	20	21	21	20
% Fistula > 3 yrs	49%	49%	51%	52%	52%	50%	60%	56%	51%	53%	47%	44%



V. ANEMIA

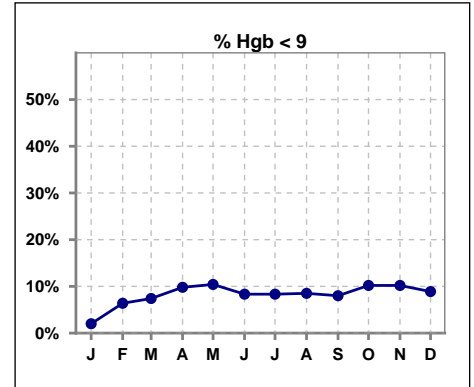
	Jan	Feb	Mar	Apr	May	Jun	Jul	Aug	Sep	Oct	Nov	Dec
# Hgb	50	47	54	51	48	48	48	47	50	49	49	45
# Hgb < 10	11	5	7	12	9	10	14	8	11	15	10	11
Pop. Mean	10.7	10.9	10.8	10.7	10.6	10.6	10.6	10.7	10.8	10.4	10.6	10.3
Std. Deviation	1.0	1.0	1.1	1.1	1.0	1.0	1.1	1.0	1.0	1.0	1.2	1.0
% Hgb < 10	22%	11%	13%	24%	19%	21%	29%	17%	22%	31%	20%	24%

Note: Excludes patients who received no ESA in month.



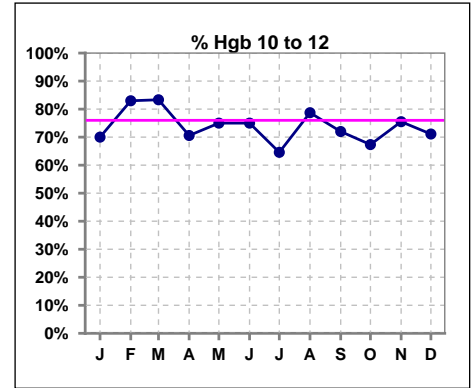
	Jan	Feb	Mar	Apr	May	Jun	Jul	Aug	Sep	Oct	Nov	Dec
# Hgb	50	47	54	51	48	48	48	47	50	49	49	45
# Hgb < 9	1	3	4	5	5	4	4	4	4	5	5	4
Pop. Mean	10.7	10.9	10.8	10.7	10.6	10.6	10.6	10.7	10.8	10.4	10.6	10.3
Std. Deviation	1.0	1.0	1.1	1.1	1.0	1.0	1.1	1.0	1.0	1.0	1.2	1.0
% Hgb < 9	2%	6%	7%	10%	10%	8%	8%	9%	8%	10%	10%	9%

Note: Excludes patients who received no ESA in month.



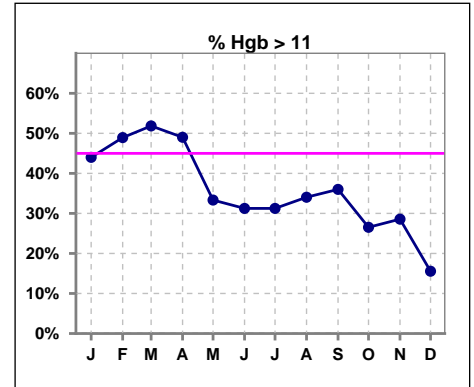
	Jan	Feb	Mar	Apr	May	Jun	Jul	Aug	Sep	Oct	Nov	Dec
# Hgb	50	47	54	51	48	48	48	47	50	49	49	45
# Hgb 10 to 12	35	39	45	36	36	36	31	37	36	33	37	32
Pop. Mean	10.7	10.9	10.8	10.7	10.6	10.6	10.6	10.7	10.8	10.4	10.6	10.3
Std. Deviation	1.0	1.0	1.1	1.1	1.0	1.0	1.1	1.0	1.0	1.0	1.2	1.0
% Hgb 10 to 12	70%	83%	83%	71%	75%	75%	65%	79%	72%	67%	76%	71%

Note: Excludes patients who received no ESA in month.



	Jan	Feb	Mar	Apr	May	Jun	Jul	Aug	Sep	Oct	Nov	Dec
# Hgb	50	47	54	51	48	48	48	47	50	49	49	45
# Hgb > 11	22	23	28	25	16	15	15	16	18	13	14	7
Pop. Mean	10.7	10.9	10.8	10.7	10.6	10.6	10.6	10.7	10.8	10.4	10.6	10.3
Std. Deviation	1.0	1.0	1.1	1.1	1.0	1.0	1.1	1.0	1.0	1.0	1.2	1.0
% Hgb > 11	44%	49%	52%	49%	33%	31%	31%	34%	36%	27%	29%	16%

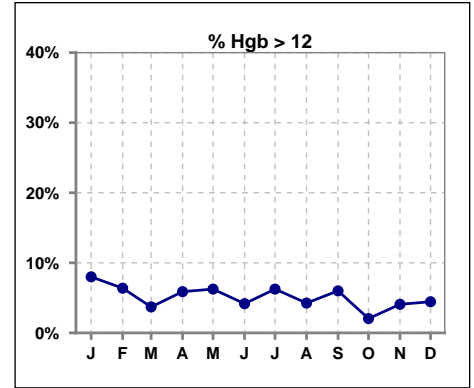
Note: Excludes patients who received no ESA in month.



V. ANEMIA - CONT.

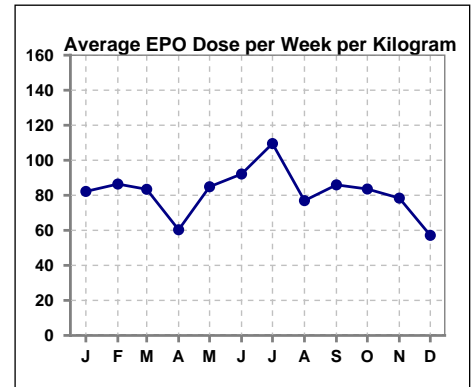
	Jan	Feb	Mar	Apr	May	Jun	Jul	Aug	Sep	Oct	Nov	Dec
# Hgb	50	47	54	51	48	48	48	47	50	49	49	45
# Hgb > 12	4	3	2	3	3	2	3	2	3	1	2	2
Pop. Mean	10.7	10.9	10.8	10.7	10.6	10.6	10.6	10.7	10.8	10.4	10.6	10.3
Std. Deviation	1.0	1.0	1.1	1.1	1.0	1.0	1.1	1.0	1.0	1.0	1.2	1.0
% Hgb > 12	8%	6%	4%	6%	6%	4%	6%	4%	6%	2%	4%	4%

Note: Excludes patients who received no ESA in month.



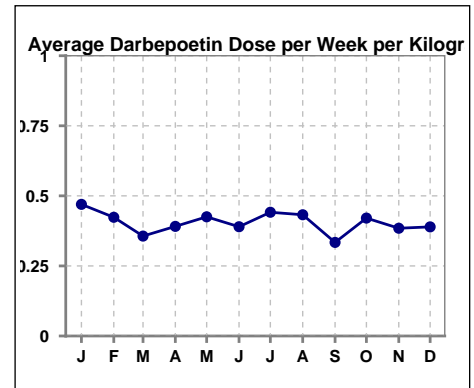
Average EPO Dose per Week per Kilogram

	Jan	Feb	Mar	Apr	May	Jun	Jul	Aug	Sep	Oct	Nov	Dec
# Average EPO	82.2	86.4	83.4	60.3	84.9	92.2	109.5	77.0	86.0	83.6	78.4	57.1



Average Darbeopetin Dose per Week per Kilogram

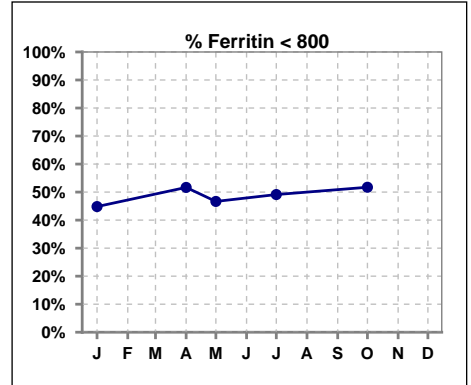
	Jan	Feb	Mar	Apr	May	Jun	Jul	Aug	Sep	Oct	Nov	Dec
# Average Darbeopetin	.5	.4	.4	.4	.4	.4	.4	.4	.3	.4	.4	.4



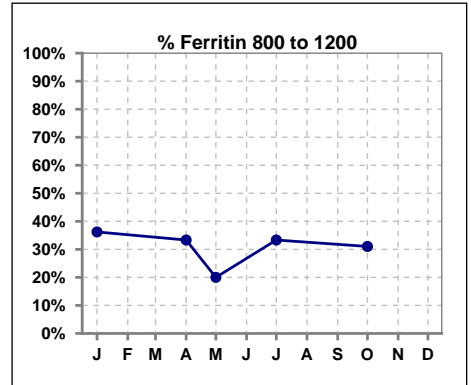
V. ANEMIA - CONT.

Iron Profile

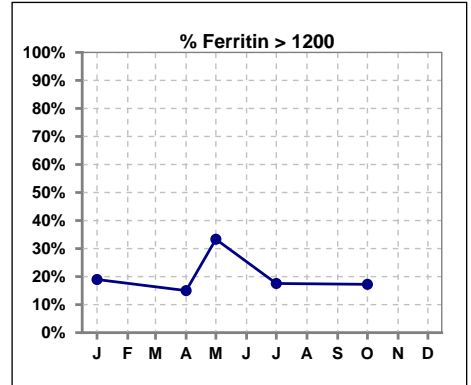
	Jan	Feb	Mar	Apr	May	Jun	Jul	Aug	Sep	Oct	Nov	Dec
# Ferritin	58			60	15		57			58		
# Ferritin < 800	26			31	7		28			30		
Pop. Mean	872			799	878		839			853		
Std. Deviation	439			383	501		467			406		
% Ferritin < 800	45%			52%	47%		49%			52%		



	Jan	Feb	Mar	Apr	May	Jun	Jul	Aug	Sep	Oct	Nov	Dec
# Ferritin	58			60	15		57			58		
# Ferritin 800 to 1200	21			20	3		19			18		
Pop. Mean	872			799	878		839			853		
Std. Deviation	439			383	501		467			406		
% Ferritin 800 to 1200	36%			33%	20%		33%			31%		

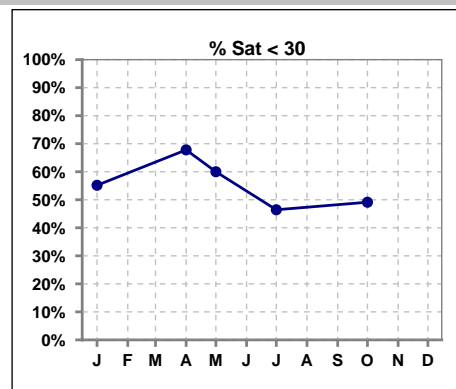


	Jan	Feb	Mar	Apr	May	Jun	Jul	Aug	Sep	Oct	Nov	Dec
# Ferritin	58			60	15		57			58		
# Ferritin > 1200	11			9	5		10			10		
Pop. Mean	872			799	878		839			853		
Std. Deviation	439			383	501		467			406		
% Ferritin > 1200	19%			15%	33%		18%			17%		

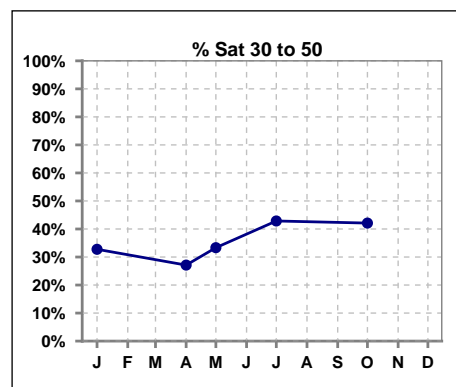


V. ANEMIA - CONT.

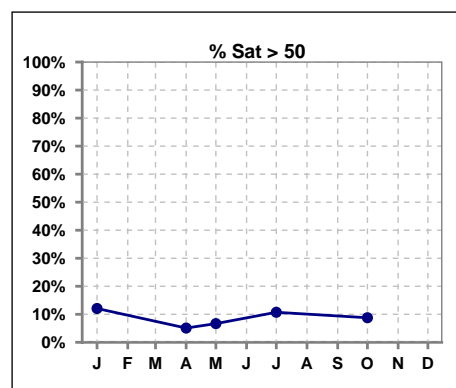
	Jan	Feb	Mar	Apr	May	Jun	Jul	Aug	Sep	Oct	Nov	Dec
# % Sat	58			59	15		56			57		
# % Sat < 30	32			40	9		26			28		
Pop. Mean	32			28	29		33			32		
Std. Deviation	16			12	18		14			14		
% % Sat < 30	55%			68%	60%		46%			49%		



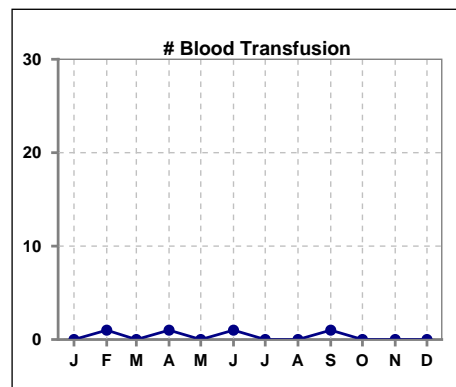
	Jan	Feb	Mar	Apr	May	Jun	Jul	Aug	Sep	Oct	Nov	Dec
# % Sat	58			59	15		56			57		
# % Sat 30 to 50	19			16	5		24			24		
Pop. Mean	32			28	29		33			32		
Std. Deviation	16			12	18		14			14		
% % Sat 30 to 50	33%			27%	33%		43%			42%		



	Jan	Feb	Mar	Apr	May	Jun	Jul	Aug	Sep	Oct	Nov	Dec
# % Sat	58			59	15		56			57		
# % Sat > 50	7			3	1		6			5		
Pop. Mean	32			28	29		33			32		
Std. Deviation	16			12	18		14			14		
% % Sat > 50	12%			5%	7%		11%			9%		



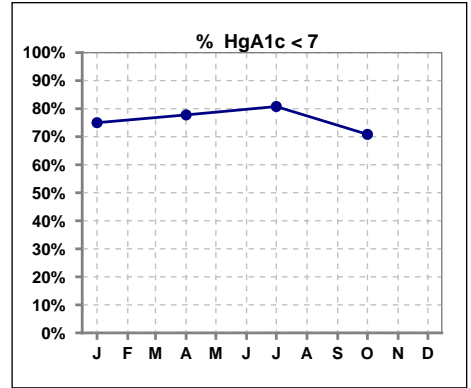
	Jan	Feb	Mar	Apr	May	Jun	Jul	Aug	Sep	Oct	Nov	Dec
# Patient	58	58	61	60	61	59	57	61	59	59	59	57
# Blood Transfusion	0	1	0	1	0	1	0	0	1	0	0	0



Methodology: a) All labs for 'Adequacy of Dialysis', 'Nutrition', 'Osteodystrophy', 'Anemia' and 'Diabetes' based on last value of month; b) BP's and #L processed are average of all values for month; c) Access data takes last access of month; d) Values for SGA and 'Infection Control' use most recent result.

VI. Diabetes

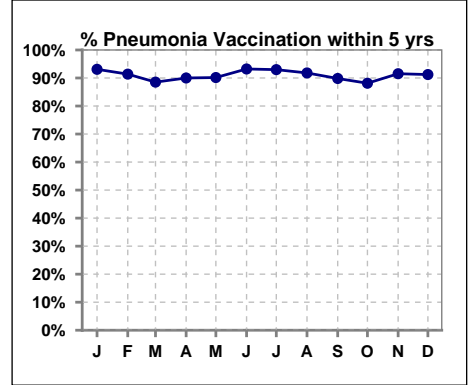
	Jan	Feb	Mar	Apr	May	Jun	Jul	Aug	Sep	Oct	Nov	Dec
# HgA1c	28			27			26			24		
# HgA1c < 7	21			21			21			17		
Pop. Mean	6.5			6.2			6.1			6.6		
Std. Deviation	1.45			1.01			1.16			1.14		
% HgA1c < 7	75%			78%			81%			71%		



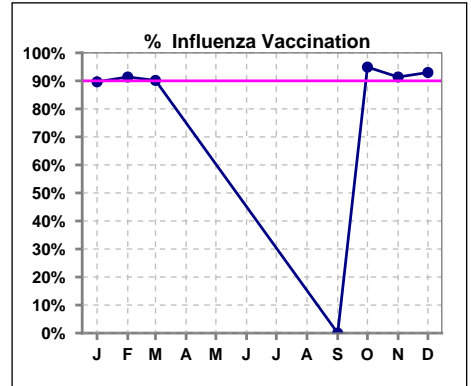
VII. Infection Control

Pneumonia vaccination within the past five years

	Jan	Feb	Mar	Apr	May	Jun	Jul	Aug	Sep	Oct	Nov	Dec
# Patient	58	58	61	60	61	59	57	61	59	59	59	57
# Pneumonia	54	53	54	54	55	55	53	56	53	52	54	52
% Pneumonia	93%	91%	89%	90%	90%	93%	93%	92%	90%	88%	92%	91%



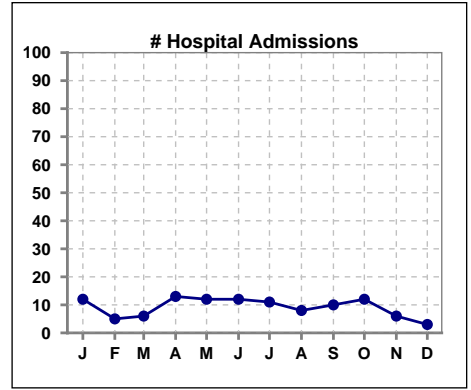
	Jan	Feb	Mar	Apr	May	Jun	Jul	Aug	Sep	Oct	Nov	Dec
# Patient	58	58	61						59	59	58	57
# Influenza	52	53	55						0	56	53	53
% Influenza	90%	91%	90%						0%	95%	91%	93%



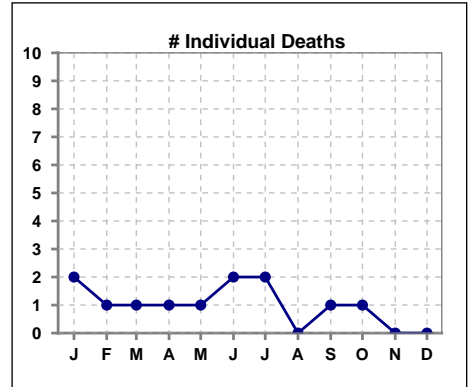
Methodology: a) All labs for 'Adequacy of Dialysis', 'Nutrition', 'Osteodystrophy', 'Anemia' and 'Diabetes' based on last value of month; b) BP's and #L processed are average of all values for month; c) Access data takes last access of month; d) Values for SGA and 'Infection Control' use most recent result.

VIII. Outcome measures

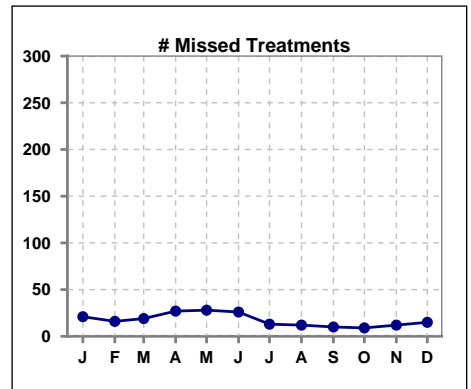
	Jan	Feb	Mar	Apr	May	Jun	Jul	Aug	Sep	Oct	Nov	Dec
# Patient	58	58	61	60	61	59	57	61	59	59	59	57
# Hospital Admissions	12	5	6	13	12	12	11	8	10	12	6	3



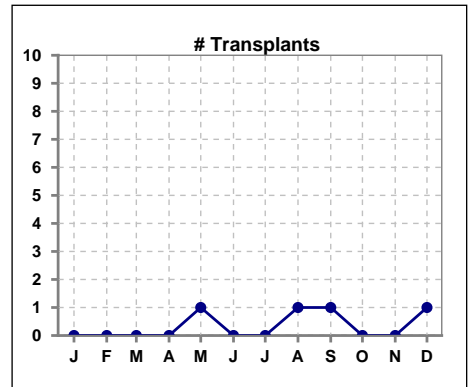
	Jan	Feb	Mar	Apr	May	Jun	Jul	Aug	Sep	Oct	Nov	Dec
# Patient	58	58	61	60	61	59	57	61	59	59	59	57
# Individual Deaths	2	1	1	1	1	2	2	0	1	1	0	0



	Jan	Feb	Mar	Apr	May	Jun	Jul	Aug	Sep	Oct	Nov	Dec
# Patient	58	58	61	60	61	59	57	61	59	59	59	57
# Missed Treatments	21	16	19	27	28	26	13	12	10	9	12	15



	Jan	Feb	Mar	Apr	May	Jun	Jul	Aug	Sep	Oct	Nov	Dec
# Patient	58	58	61	60	61	59	57	61	59	59	59	57
# Transplants	0	0	0	0	1	0	0	1	1	0	0	1



Methodology: a) All labs for 'Adequacy of Dialysis', 'Nutrition', 'Osteodystrophy', 'Anemia' and 'Diabetes' based on last value of month; b) BP's and #L processed are average of all values for month; c) Access data takes last access of month; d) Values for SGA and 'Infection Control' use most recent result.