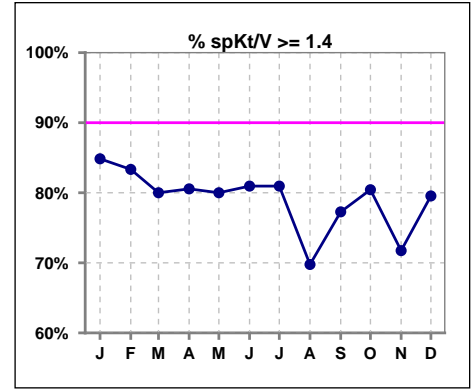
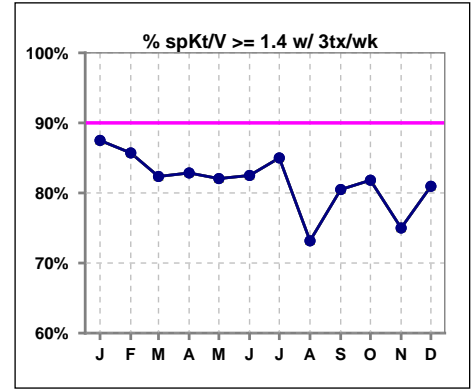


I. ADEQUACY OF DIALYSIS

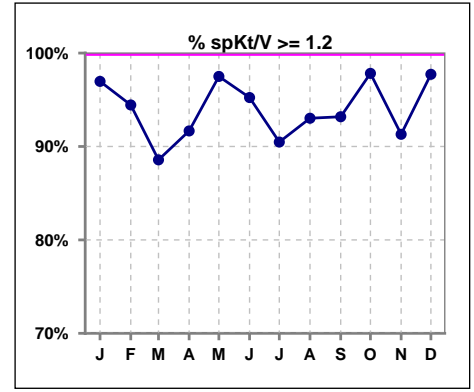
	Jan	Feb	Mar	Apr	May	Jun	Jul	Aug	Sep	Oct	Nov	Dec
# spKt/V	33	36	35	36	40	42	42	43	44	46	46	44
# spKt/V >= 1.4	28	30	28	29	32	34	34	30	34	37	33	35
Pop. Mean	1.72	1.66	1.64	1.64	1.59	1.61	1.58	1.55	1.56	1.57	1.55	1.56
Std. Deviation	0.37	0.39	0.30	0.31	0.24	0.26	0.35	0.28	0.26	0.22	0.26	0.22
% spKt/V >= 1.4	85%	83%	80%	81%	80%	81%	81%	70%	77%	80%	72%	80%



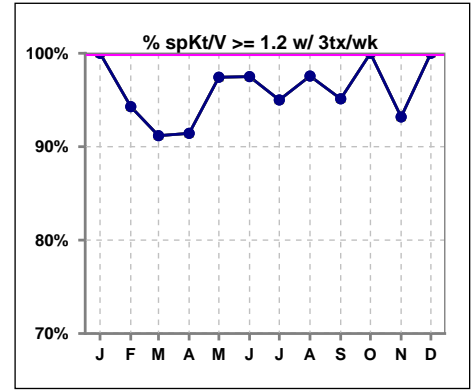
	Jan	Feb	Mar	Apr	May	Jun	Jul	Aug	Sep	Oct	Nov	Dec
# spKt/V w/ 3tx/wk	32	35	34	35	39	40	40	41	41	44	44	42
# spKt/V >= 1.4 w/3tx/wk	28	30	28	29	32	33	34	30	33	36	33	34
Pop. Mean	1.75	1.67	1.66	1.65	1.60	1.61	1.61	1.57	1.57	1.59	1.57	1.58
Std. Deviation	0.34	0.39	0.29	0.30	0.23	0.25	0.33	0.27	0.25	0.20	0.25	0.21
% >=1.4 w/3tx/wk	88%	86%	82%	83%	82%	83%	85%	73%	80%	82%	75%	81%



	Jan	Feb	Mar	Apr	May	Jun	Jul	Aug	Sep	Oct	Nov	Dec
# spKt/V	33	36	35	36	40	42	42	43	44	46	46	44
# spKt/V >= 1.2	32	34	31	33	39	40	38	40	41	45	42	43
Pop. Mean	1.72	1.66	1.64	1.64	1.59	1.61	1.58	1.55	1.56	1.57	1.55	1.56
Std. Deviation	0.37	0.39	0.30	0.31	0.24	0.26	0.35	0.28	0.26	0.22	0.26	0.22
% spKt/V >= 1.2	97%	94%	89%	92%	98%	95%	90%	93%	93%	98%	91%	98%



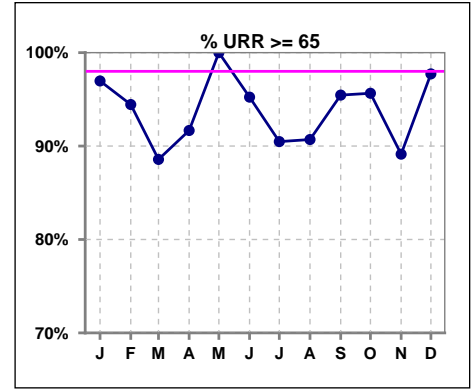
	Jan	Feb	Mar	Apr	May	Jun	Jul	Aug	Sep	Oct	Nov	Dec
# spKt/V w/ 3tx/wk	32	35	34	35	39	40	40	41	41	44	44	42
# spKt/V >= 1.2 w/3tx/wk	32	33	31	32	38	39	38	40	39	44	41	42
Pop. Mean	1.75	1.67	1.66	1.65	1.60	1.61	1.61	1.57	1.57	1.59	1.57	1.58
Std. Deviation	0.34	0.39	0.29	0.30	0.23	0.25	0.33	0.27	0.25	0.20	0.25	0.21
% >=1.2 w/3tx/wk	100%	94%	91%	91%	97%	98%	95%	98%	95%	100%	93%	100%



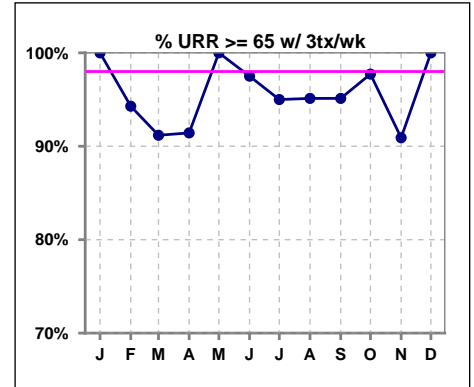
Methodology: a) All labs for 'Adequacy of Dialysis', 'Nutrition', 'Osteodystrophy', 'Anemia' and 'Diabetes' based on last value of month; b) BP's and #L processed are average of all values for month; c) Access data takes last access of month; d) Values for SGA and 'Infection Control' use most recent result.

I. ADEQUACY OF DIALYSIS - CONT.

	Jan	Feb	Mar	Apr	May	Jun	Jul	Aug	Sep	Oct	Nov	Dec
# URR	33	36	35	36	40	42	42	43	44	46	46	44
# URR >= 65	32	34	31	33	40	40	38	39	42	44	41	43
Pop. Mean	76	75	75	75	75	75	74	74	74	74	74	74
Std. Deviation	6.42	7.88	6.84	6.48	4.88	5.28	7.27	5.86	5.71	4.81	5.91	4.73
% URR >= 65	97%	94%	89%	92%	100%	95%	90%	91%	95%	96%	89%	98%



	Jan	Feb	Mar	Apr	May	Jun	Jul	Aug	Sep	Oct	Nov	Dec
# URR w/ 3tx/wk	32	35	34	35	39	40	40	41	41	44	44	42
# URR>=65 w/ 3tx/wk	32	33	31	32	39	39	38	39	39	43	40	42
Pop. Mean	77	75	76	76	75	75	75	74	74	74	74	75
Std. Deviation	5.33	7.88	6.66	6.47	4.76	5.10	6.50	5.59	5.49	4.56	5.70	4.47
% URR>=65 w/ 3tx/wk	100%	94%	91%	91%	100%	98%	95%	95%	95%	98%	91%	100%

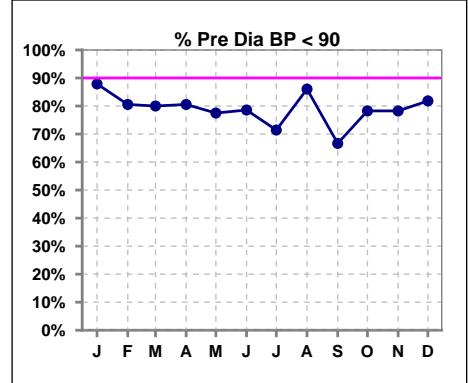


Methodology: a) All labs for 'Adequacy of Dialysis', 'Nutrition', 'Osteodystrophy', 'Anemia' and 'Diabetes' based on last value of month; b) BP's and #L processed are average of all values for month; c) Access data takes last access of month; d) Values for SGA and 'Infection Control' use most recent result.

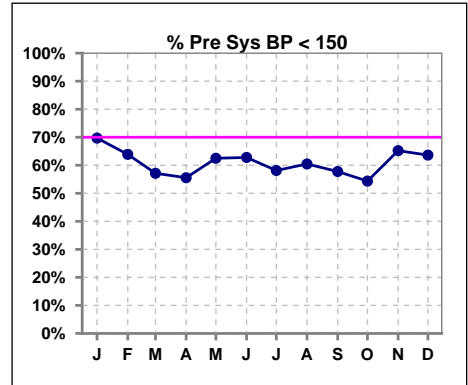
I. ADEQUACY OF DIALYSIS - CONT.

Blood Pressure Control (Pre)

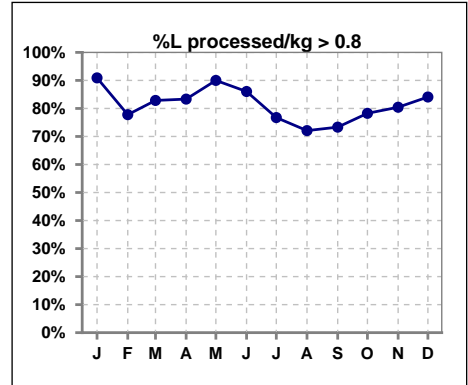
	Jan	Feb	Mar	Apr	May	Jun	Jul	Aug	Sep	Oct	Nov	Dec
# Pre Dia BP	33	36	35	36	40	42	42	43	45	46	46	44
# Pre Dia BP < 90	29	29	28	29	31	33	30	37	30	36	36	36
Pop. Mean	78	78	79	79	79	80	80	80	81	79	79	79
Std. Deviation	12.2	14.1	13.7	13.8	12.8	12.3	13.6	12.8	13.9	13.6	12.9	12.1
% Pre Dia BP < 90	88%	81%	80%	81%	78%	79%	71%	86%	67%	78%	78%	82%



	Jan	Feb	Mar	Apr	May	Jun	Jul	Aug	Sep	Oct	Nov	Dec
# Pre Sys BP	33	36	35	36	40	43	43	43	45	46	46	44
# Pre Sys BP < 150	23	23	20	20	25	27	25	26	26	25	30	28
Pop. Mean	145	144	145	147	146	146	144	144	145	145	144	143
Std. Deviation	17.6	22.0	17.4	18.8	19.7	18.1	18.7	17.1	19.5	19.7	20.1	19.3
%Pre Sys BP <150	70%	64%	57%	56%	63%	63%	58%	60%	58%	54%	65%	64%



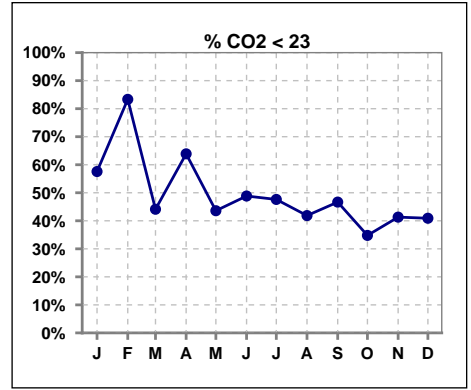
	Jan	Feb	Mar	Apr	May	Jun	Jul	Aug	Sep	Oct	Nov	Dec
# L processed/kg	33	36	35	36	40	43	43	43	45	46	46	44
# L processed/kg>0.8	30	28	29	30	36	37	33	31	33	36	37	37
Pop. Mean	1	1	1	1	1	1	1	1	1	1	1	1
Std. Deviation	0.2	0.3	0.3	0.3	0.2	0.3	0.3	0.3	0.3	0.2	0.2	0.2
% L processed/kg>0.8	91%	78%	83%	83%	90%	86%	77%	72%	73%	78%	80%	84%



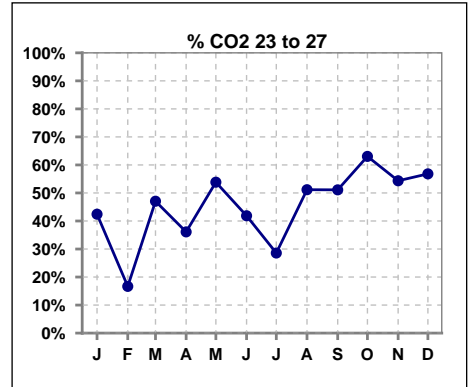
Methodology: a) All labs for 'Adequacy of Dialysis', 'Nutrition', 'Osteodystrophy', 'Anemia' and 'Diabetes' based on last value of month; b) BP's and #L processed are average of all values for month; c) Access data takes last access of month; d) Values for SGA and 'Infection Control' use most recent result.

I. ADEQUACY OF DIALYSIS - CONT.

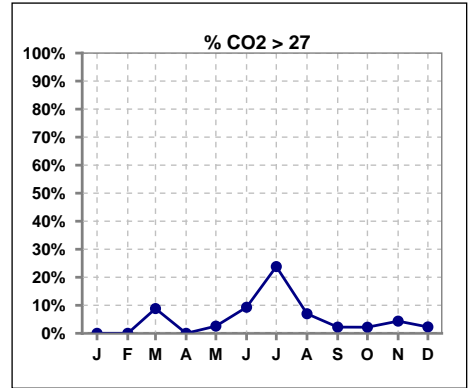
	Jan	Feb	Mar	Apr	May	Jun	Jul	Aug	Sep	Oct	Nov	Dec
# CO2	33	36	34	36	39	43	42	43	45	46	46	44
# CO2 < 23	19	30	15	23	17	21	20	18	21	16	19	18
Pop. Mean	22	19	23	22	23	23	23	23	23	23	23	23
Std. Deviation	2.28	2.93	2.92	2.52	2.73	4.72	5.20	3.55	2.63	3.49	3.35	3.02
% CO2 < 23	58%	83%	44%	64%	44%	49%	48%	42%	47%	35%	41%	41%



	Jan	Feb	Mar	Apr	May	Jun	Jul	Aug	Sep	Oct	Nov	Dec
# CO2	33	36	34	36	39	43	42	43	45	46	46	44
# CO2 23 to 27	14	6	16	13	21	18	12	22	23	29	25	25
Pop. Mean	22	19	23	22	23	23	23	23	23	23	23	23
Std. Deviation	2.28	2.93	2.92	2.52	2.73	4.72	5.20	3.55	2.63	3.49	3.35	3.02
% CO2 23 to 27	42%	17%	47%	36%	54%	42%	29%	51%	51%	63%	54%	57%



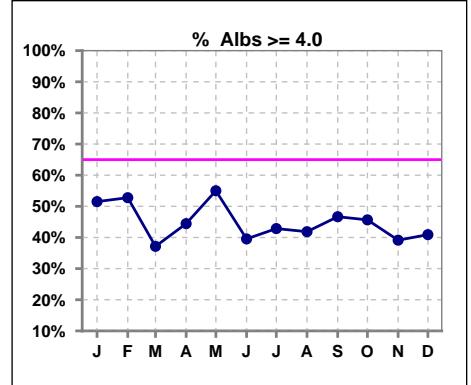
	Jan	Feb	Mar	Apr	May	Jun	Jul	Aug	Sep	Oct	Nov	Dec
# CO2	33	36	34	36	39	43	42	43	45	46	46	44
# CO2 > 27	0	0	3	0	1	4	10	3	1	1	2	1
Pop. Mean	22	19	23	22	23	23	23	23	23	23	23	23
Std. Deviation	2.28	2.93	2.92	2.52	2.73	4.72	5.20	3.55	2.63	3.49	3.35	3.02
% CO2 > 27	0%	0%	9%	0%	3%	9%	24%	7%	2%	2%	4%	2%



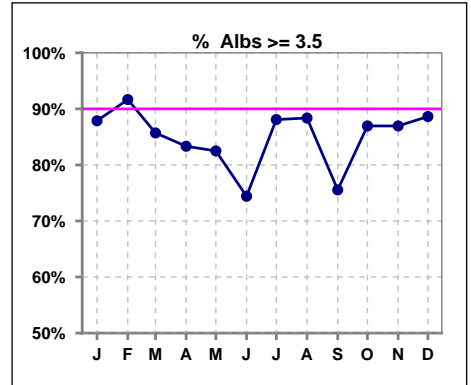
*Albumin values use BCG method - as of July 2001

II. NUTRITION

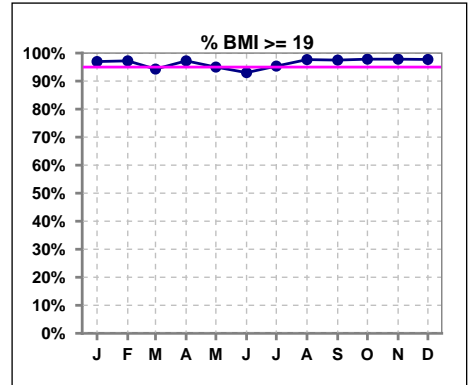
	Jan	Feb	Mar	Apr	May	Jun	Jul	Aug	Sep	Oct	Nov	Dec
# Albumin	33	36	35	36	40	43	42	43	45	46	46	44
# Albumin >= 4.0	17	19	13	16	22	17	18	18	21	21	18	18
Pop. Mean	3.9	3.9	3.8	3.9	3.9	3.7	3.8	3.9	3.8	3.8	3.9	3.8
Std. Deviation	0.41	0.32	0.33	0.39	0.46	0.55	0.34	0.34	0.46	0.42	0.35	0.35
% Alb >= 4.0	52%	53%	37%	44%	55%	40%	43%	42%	47%	46%	39%	41%



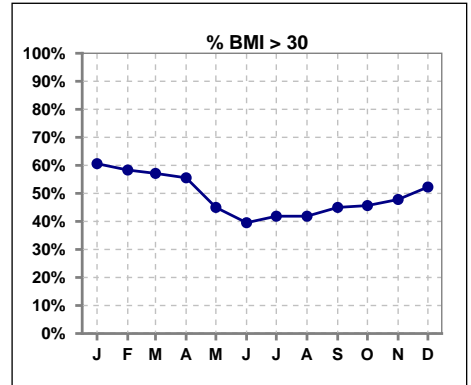
	Jan	Feb	Mar	Apr	May	Jun	Jul	Aug	Sep	Oct	Nov	Dec
# Albumin	33	36	35	36	40	43	42	43	45	46	46	44
# Albumin >= 3.5	29	33	30	30	33	32	37	38	34	40	40	39
Pop. Mean	3.9	3.9	3.8	3.9	3.9	3.7	3.8	3.9	3.8	3.8	3.9	3.8
Std. Deviation	0.41	0.32	0.33	0.39	0.46	0.55	0.34	0.34	0.46	0.42	0.35	0.35
% Alb >= 3.5	88%	92%	86%	83%	83%	74%	88%	88%	76%	87%	87%	89%



	Jan	Feb	Mar	Apr	May	Jun	Jul	Aug	Sep	Oct	Nov	Dec
# BMI	33	36	35	36	40	43	43	43	40	46	46	44
# BMI >= 19	32	35	33	35	38	40	41	42	39	45	45	43
Pop. Mean	32	32	32	31	31	30	30	30	31	31	31	31
Std. Deviation	7.7	7.7	7.7	7.4	7.6	7.9	7.5	7.5	7.6	7.2	7.4	7.6
% BMI >= 19	97%	97%	94%	97%	95%	93%	95%	98%	98%	98%	98%	98%



	Jan	Feb	Mar	Apr	May	Jun	Jul	Aug	Sep	Oct	Nov	Dec
# BMI	33	36	35	36	40	43	43	43	40	46	46	44
# BMI > 30	20	21	20	20	18	17	18	18	18	21	22	23
Pop. Mean	32	32	32	31	31	30	30	30	31	31	31	31
Std. Deviation	7.7	7.7	7.7	7.4	7.6	7.9	7.5	7.5	7.6	7.2	7.4	7.6
% BMI > 30	61%	58%	57%	56%	45%	40%	42%	42%	45%	46%	48%	52%

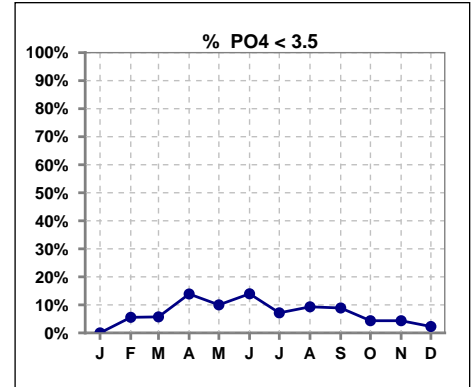


Methodology: a) All labs for 'Adequacy of Dialysis', 'Nutrition', 'Osteodystrophy', 'Anemia' and 'Diabetes' based on last value of month; b) BP's and #L processed are average of all values for month; c) Access data takes last access of month; d) Values for SGA and 'Infection Control' use most recent result.

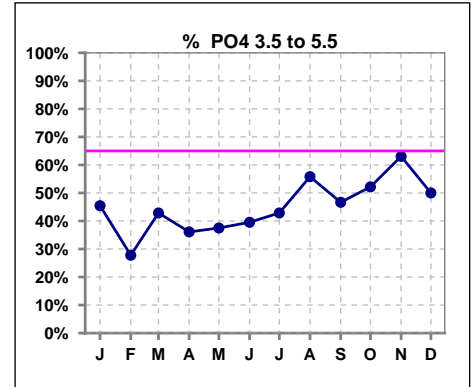
Lab methodology for PTH changed January 2012

III. OSTEODYSTROPHY

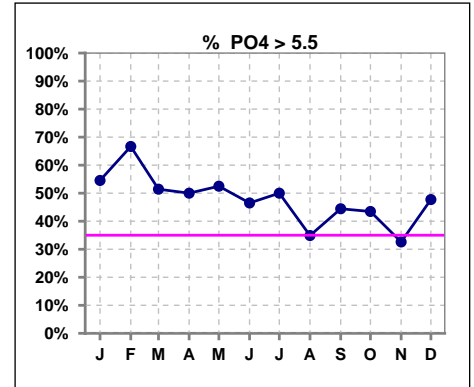
	Jan	Feb	Mar	Apr	May	Jun	Jul	Aug	Sep	Oct	Nov	Dec
# PO4	33	36	35	36	40	43	42	43	45	46	46	44
# PO4 < 3.5	0	2	2	5	4	6	3	4	4	2	2	1
Pop. Mean	5.7	6.4	5.7	5.2	5.9	5.7	6.0	5.6	5.7	5.4	5.3	5.8
Std. Deviation	1.38	2.10	1.48	1.32	1.77	1.81	2.04	1.94	1.83	1.50	1.53	1.70
% PO4 < 3.5	0%	6%	6%	14%	10%	14%	7%	9%	9%	4%	4%	2%



	Jan	Feb	Mar	Apr	May	Jun	Jul	Aug	Sep	Oct	Nov	Dec
# PO4	33	36	35	36	40	43	42	43	45	46	46	44
# PO4 3.5 to 5.5	15	10	15	13	15	17	18	24	21	24	29	22
Pop. Mean	5.7	6.4	5.7	5.2	5.9	5.7	6.0	5.6	5.7	5.4	5.3	5.8
Std. Deviation	1.38	2.10	1.48	1.32	1.77	1.81	2.04	1.94	1.83	1.50	1.53	1.70
% PO4 3.5 to 5.5	45%	28%	43%	36%	38%	40%	43%	56%	47%	52%	63%	50%



	Jan	Feb	Mar	Apr	May	Jun	Jul	Aug	Sep	Oct	Nov	Dec
# PO4	33	36	35	36	40	43	42	43	45	46	46	44
# PO4 > 5.5	18	24	18	18	21	20	21	15	20	20	15	21
Pop. Mean	5.7	6.4	5.7	5.2	5.9	5.7	6.0	5.6	5.7	5.4	5.3	5.8
Std. Deviation	1.38	2.10	1.48	1.32	1.77	1.81	2.04	1.94	1.83	1.50	1.53	1.70
% PO4 > 5.5	55%	67%	51%	50%	53%	47%	50%	35%	44%	43%	33%	48%

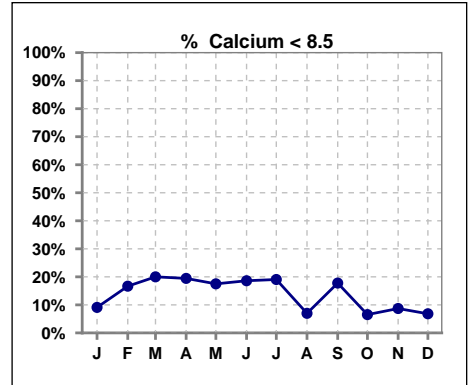


Methodology: a) All labs for 'Adequacy of Dialysis', 'Nutrition', 'Osteodystrophy', 'Anemia' and 'Diabetes' based on last value of month; b) BP's and #L processed are average of all values for month; c) Access data takes last access of month; d) Values for SGA and 'Infection Control' use most recent result.

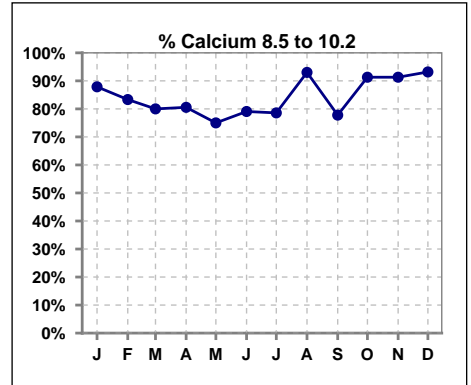
Lab methodology for PTH changed January 2012

III. OSTEODYSTROPHY - CONT.

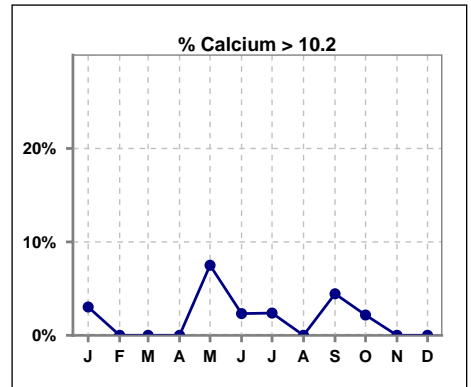
	Jan	Feb	Mar	Apr	May	Jun	Jul	Aug	Sep	Oct	Nov	Dec
# Calcium	33	36	35	36	40	43	42	43	45	46	46	44
# Calcium < 8.5	3	6	7	7	7	8	8	3	8	3	4	3
Pop. Mean	9.3	8.9	9.0	9.0	9.2	9.0	9.1	9.2	9.1	9.1	9.1	9.2
Std. Deviation	0.70	0.74	0.84	0.68	0.96	0.80	0.84	0.71	0.77	0.60	0.53	0.51
% Calcium < 8.5	9%	17%	20%	19%	18%	19%	19%	7%	18%	7%	9%	7%



	Jan	Feb	Mar	Apr	May	Jun	Jul	Aug	Sep	Oct	Nov	Dec
# Calcium	33	36	35	36	40	43	42	43	45	46	46	44
# Calcium 8.5 to 10.2	29	30	28	29	30	34	33	40	35	42	42	41
Pop. Mean	9.3	8.9	9.0	9.0	9.2	9.0	9.1	9.2	9.1	9.1	9.1	9.2
Std. Deviation	0.70	0.74	0.84	0.68	0.96	0.80	0.84	0.71	0.77	0.60	0.53	0.51
% Calcium 8.5 to 10.2	88%	83%	80%	81%	75%	79%	79%	93%	78%	91%	91%	93%



	Jan	Feb	Mar	Apr	May	Jun	Jul	Aug	Sep	Oct	Nov	Dec
# Calcium	33	36	35	36	40	43	42	43	45	46	46	44
# Calcium > 10.2	1	0	0	0	3	1	1	0	2	1	0	0
Pop. Mean	9.3	8.9	9.0	9.0	9.2	9.0	9.1	9.2	9.1	9.1	9.1	9.2
Std. Deviation	0.70	0.74	0.84	0.68	0.96	0.80	0.84	0.71	0.77	0.60	0.53	0.51
% Calcium > 10.2	3%	0%	0%	0%	8%	2%	2%	0%	4%	2%	0%	0%

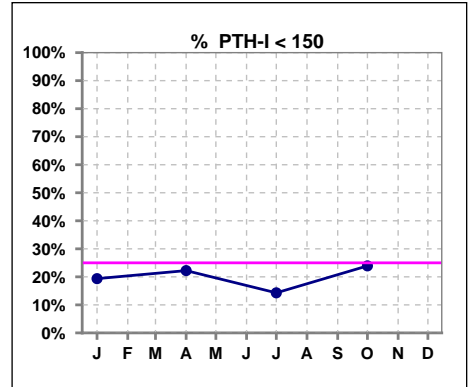


Methodology: a) All labs for 'Adequacy of Dialysis', 'Nutrition', 'Osteodystrophy', 'Anemia' and 'Diabetes' based on last value of month; b) BP's and #L processed are average of all values for month; c) Access data takes last access of month; d) Values for SGA and 'Infection Control' use most recent result.

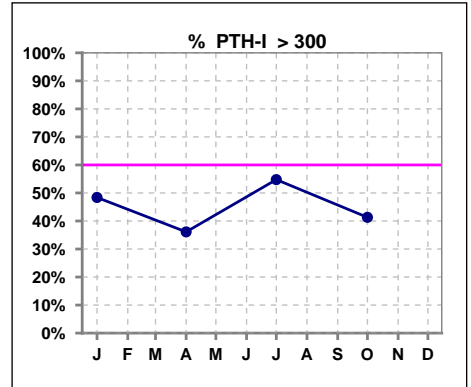
Lab methodology for PTH changed January 2012

III. OSTEODYSTROPHY - CONT.

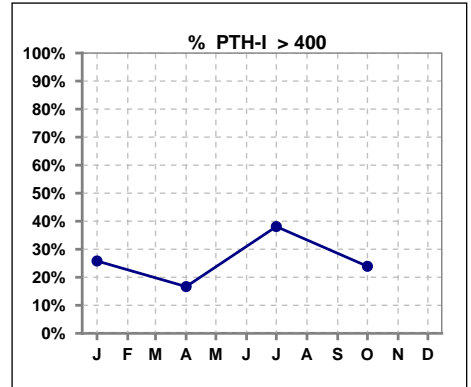
	Jan	Feb	Mar	Apr	May	Jun	Jul	Aug	Sep	Oct	Nov	Dec
# PTH-I	31			36			42			46		
# PTH-I < 150	6			8			6			11		
Pop. Mean	328			283			427			366		
Std. Deviation	224			219			403			441		
% PTH-I < 150	19%			22%			14%			24%		



	Jan	Feb	Mar	Apr	May	Jun	Jul	Aug	Sep	Oct	Nov	Dec
# PTH-I	31			36			42			46		
# PTH-I > 300	15			13			23			19		
Pop. Mean	328			283			427			366		
Std. Deviation	224			219			403			441		
% PTH-I > 300	48%			36%			55%			41%		



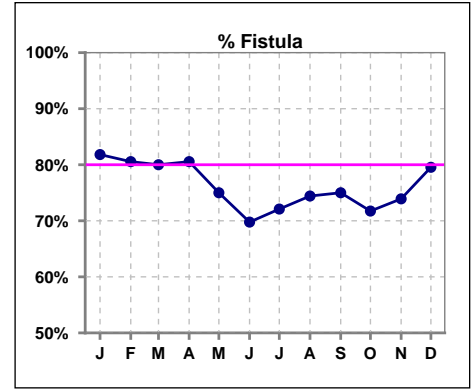
	Jan	Feb	Mar	Apr	May	Jun	Jul	Aug	Sep	Oct	Nov	Dec
# PTH-I	31			36			42			46		
# PTH-I > 400	8			6			16			11		
Pop. Mean	328			283			427			366		
Std. Deviation	224			219			403			441		
% PTH-I > 400	26%			17%			38%			24%		



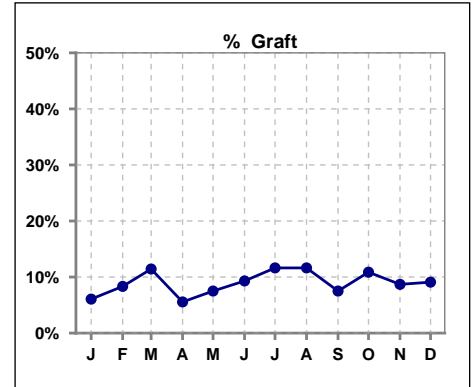
Methodology: a) All labs for 'Adequacy of Dialysis', 'Nutrition', 'Osteodystrophy', 'Anemia' and 'Diabetes' based on last value of month; b) BP's and #L processed are average of all values for month; c) Access data takes last access of month; d) Values for SGA and 'Infection Control' use most recent result.

IV. ACCESS

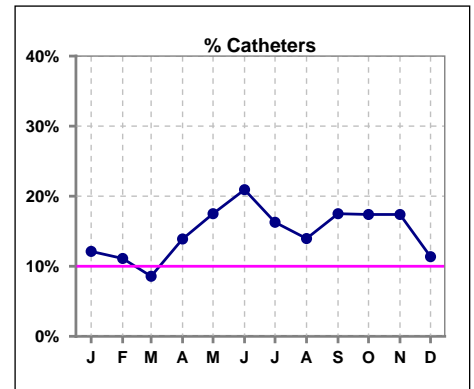
	Jan	Feb	Mar	Apr	May	Jun	Jul	Aug	Sep	Oct	Nov	Dec
# Access	33	36	35	36	40	43	43	43	40	46	46	44
# Fistula	27	29	28	29	30	30	31	32	30	33	34	35
% Fistula	82%	81%	80%	81%	75%	70%	72%	74%	75%	72%	74%	80%



	Jan	Feb	Mar	Apr	May	Jun	Jul	Aug	Sep	Oct	Nov	Dec
# Access	33	36	35	36	40	43	43	43	40	46	46	44
# Graft	2	3	4	2	3	4	5	5	3	5	4	4
% Graft	6%	8%	11%	6%	8%	9%	12%	12%	8%	11%	9%	9%



	Jan	Feb	Mar	Apr	May	Jun	Jul	Aug	Sep	Oct	Nov	Dec
# Access	33	36	35	36	40	43	43	43	40	46	46	44
# Catheters	4	4	3	5	7	9	7	6	7	8	8	5
% Catheters	12%	11%	9%	14%	18%	21%	16%	14%	18%	17%	17%	11%



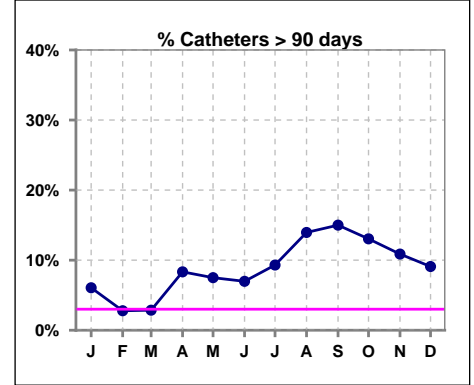
Methodology: a) All labs for 'Adequacy of Dialysis', 'Nutrition', 'Osteodystrophy', 'Anemia' and 'Diabetes' based on last value of month; b) BP's and #L processed are average of all values for month; c) Access data takes last access of month; d) Values for SGA and 'Infection Control' use most recent result.

IV. ACCESS - CONT.

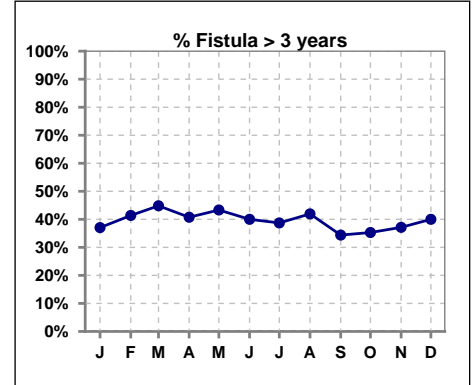
Catheters > 90 days

	Jan	Feb	Mar	Apr	May	Jun	Jul	Aug	Sep	Oct	Nov	Dec
# Access	33	36	35	36	40	43	43	43	40	46	46	44
# Catheters	2	1	1	3	3	3	4	6	6	6	5	4
% Catheters	6%	3%	3%	8%	8%	7%	9%	14%	15%	13%	11%	9%

Definition: Catheter in use on last treatment of the month



	Jan	Feb	Mar	Apr	May	Jun	Jul	Aug	Sep	Oct	Nov	Dec
# Fistula	27	29	29	27	30	30	31	31	32	34	35	35
# Fistula > 3 yrs	10	12	13	11	13	12	12	13	11	12	13	14
% Fistula > 3 yrs	37%	41%	45%	41%	43%	40%	39%	42%	34%	35%	37%	40%

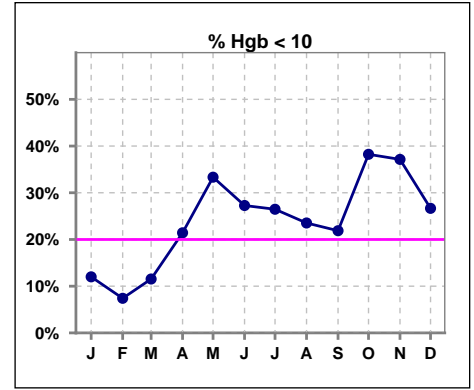


Methodology: a) All labs for 'Adequacy of Dialysis', 'Nutrition', 'Osteodystrophy', 'Anemia' and 'Diabetes' based on last value of month; b) BP's and #L processed are average of all values for month; c) Access data takes last access of month; d) Values for SGA and 'Infection Control' use most recent result.

V. ANEMIA

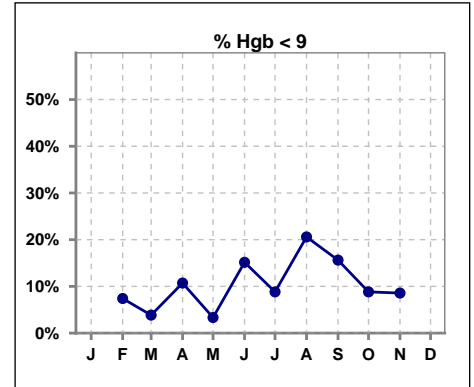
	Jan	Feb	Mar	Apr	May	Jun	Jul	Aug	Sep	Oct	Nov	Dec
# Hgb	25	27	26	28	30	33	34	34	32	34	35	30
# Hgb < 10	3	2	3	6	10	9	9	8	7	13	13	8
Pop. Mean	10.9	10.9	10.9	10.8	10.5	10.3	10.5	10.5	10.3	10.2	10.3	10.6
Std. Deviation	0.7	1.1	0.9	1.1	0.9	1.4	1.1	1.3	1.2	1.0	1.4	0.9
% Hgb < 10	12%	7%	12%	21%	33%	27%	26%	24%	22%	38%	37%	27%

Note: Excludes patients who received no ESA in month.



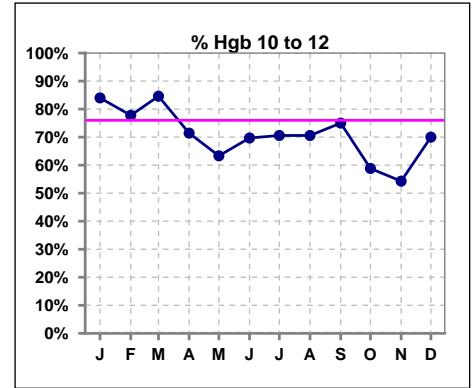
	Jan	Feb	Mar	Apr	May	Jun	Jul	Aug	Sep	Oct	Nov	Dec
# Hgb	25	27	26	28	30	33	34	34	32	34	35	30
# Hgb < 9		2	1	3	1	5	3	7	5	3	3	
Pop. Mean	10.9	10.9	10.9	10.8	10.5	10.3	10.5	10.5	10.3	10.2	10.3	10.6
Std. Deviation	0.7	1.1	0.9	1.1	0.9	1.4	1.1	1.3	1.2	1.0	1.4	0.9
% Hgb < 9		7%	4%	11%	3%	15%	9%	21%	16%	9%	9%	

Note: Excludes patients who received no ESA in month.



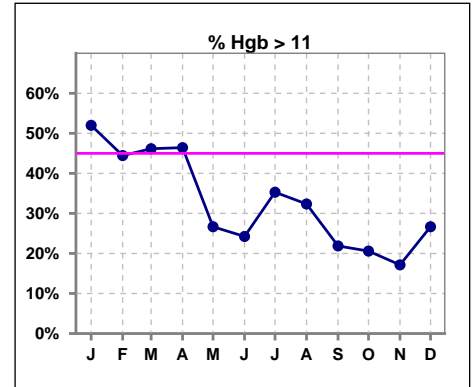
	Jan	Feb	Mar	Apr	May	Jun	Jul	Aug	Sep	Oct	Nov	Dec
# Hgb	25	27	26	28	30	33	34	34	32	34	35	30
# Hgb 10 to 12	21	21	22	20	19	23	24	24	24	20	19	21
Pop. Mean	10.9	10.9	10.9	10.8	10.5	10.3	10.5	10.5	10.3	10.2	10.3	10.6
Std. Deviation	0.7	1.1	0.9	1.1	0.9	1.4	1.1	1.3	1.2	1.0	1.4	0.9
% Hgb 10 to 12	84%	78%	85%	71%	63%	70%	71%	71%	75%	59%	54%	70%

Note: Excludes patients who received no ESA in month.



	Jan	Feb	Mar	Apr	May	Jun	Jul	Aug	Sep	Oct	Nov	Dec
# Hgb	25	27	26	28	30	33	34	34	32	34	35	30
# Hgb > 11	13	12	12	13	8	8	12	11	7	7	6	8
Pop. Mean	10.9	10.9	10.9	10.8	10.5	10.3	10.5	10.5	10.3	10.2	10.3	10.6
Std. Deviation	0.7	1.1	0.9	1.1	0.9	1.4	1.1	1.3	1.2	1.0	1.4	0.9
% Hgb > 11	52%	44%	46%	46%	27%	24%	35%	32%	22%	21%	17%	27%

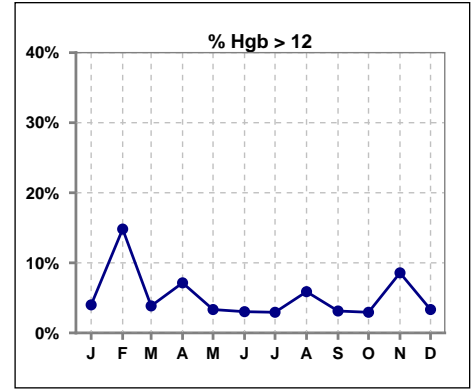
Note: Excludes patients who received no ESA in month.



V. ANEMIA - CONT.

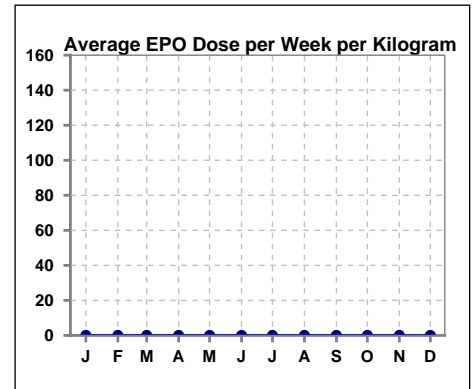
	Jan	Feb	Mar	Apr	May	Jun	Jul	Aug	Sep	Oct	Nov	Dec
# Hgb	25	27	26	28	30	33	34	34	32	34	35	30
# Hgb > 12	1	4	1	2	1	1	1	2	1	1	3	1
Pop. Mean	10.9	10.9	10.9	10.8	10.5	10.3	10.5	10.5	10.3	10.2	10.3	10.6
Std. Deviation	0.7	1.1	0.9	1.1	0.9	1.4	1.1	1.3	1.2	1.0	1.4	0.9
% Hgb > 12	4%	15%	4%	7%	3%	3%	3%	6%	3%	3%	9%	3%

Note: Excludes patients who received no ESA in month.



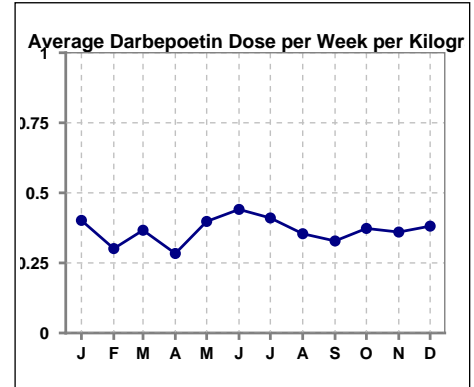
Average EPO Dose per Week per Kilogram

	Jan	Feb	Mar	Apr	May	Jun	Jul	Aug	Sep	Oct	Nov	Dec
# Average EPO	0	0	0	0	0	0	0	0	0	0	0	0



Average Darbeopetin Dose per Week per Kilogram

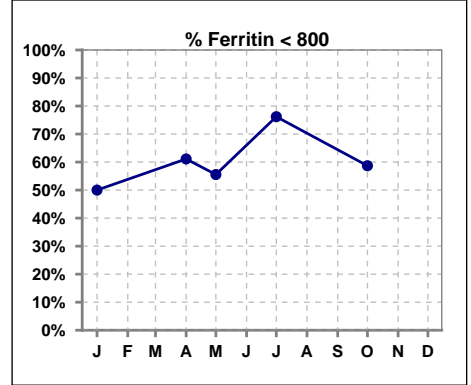
	Jan	Feb	Mar	Apr	May	Jun	Jul	Aug	Sep	Oct	Nov	Dec
# Average Darbeopetin	.4	.3	.4	.3	.4	.4	.4	.4	.3	.4	.4	.4



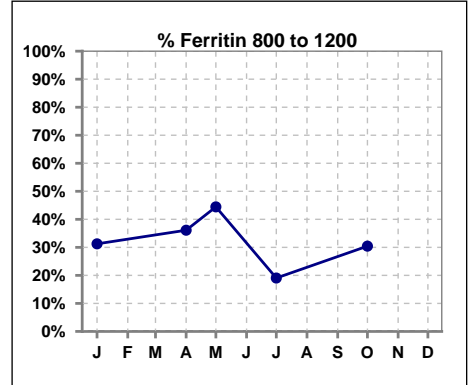
V. ANEMIA - CONT.

Iron Profile

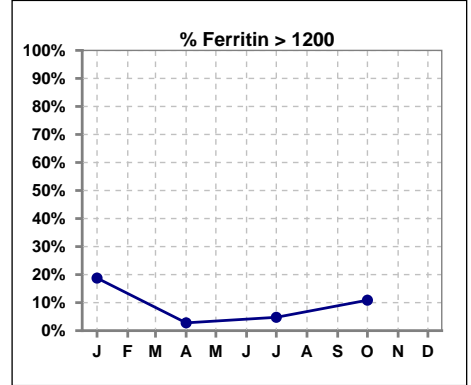
	Jan	Feb	Mar	Apr	May	Jun	Jul	Aug	Sep	Oct	Nov	Dec
# Ferritin	32			36	9		42			46		
# Ferritin < 800	16			22	5		32			27		
Pop. Mean	824			699	711		660			723		
Std. Deviation	380			286	242		290			384		
% Ferritin < 800	50%			61%	56%		76%			59%		



	Jan	Feb	Mar	Apr	May	Jun	Jul	Aug	Sep	Oct	Nov	Dec
# Ferritin	32			36	9		42			46		
# Ferritin 800 to 1200	10			13	4		8			14		
Pop. Mean	824			699	711		660			723		
Std. Deviation	380			286	242		290			384		
% Ferritin 800 to 1200	31%			36%	44%		19%			30%		

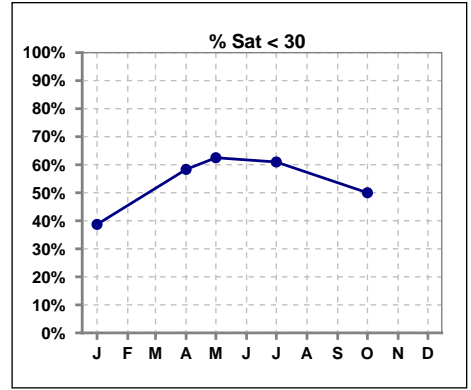


	Jan	Feb	Mar	Apr	May	Jun	Jul	Aug	Sep	Oct	Nov	Dec
# Ferritin	32			36	9		42			46		
# Ferritin > 1200	6			1			2			5		
Pop. Mean	824			699	711		660			723		
Std. Deviation	380			286	242		290			384		
% Ferritin > 1200	19%			3%			5%			11%		

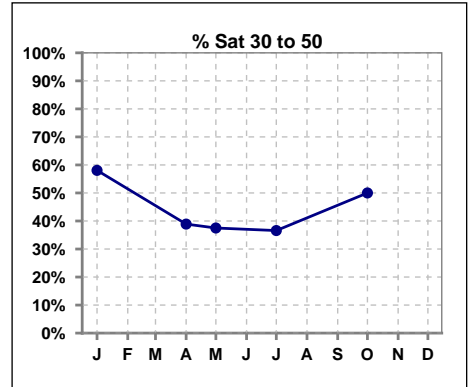


V. ANEMIA - CONT.

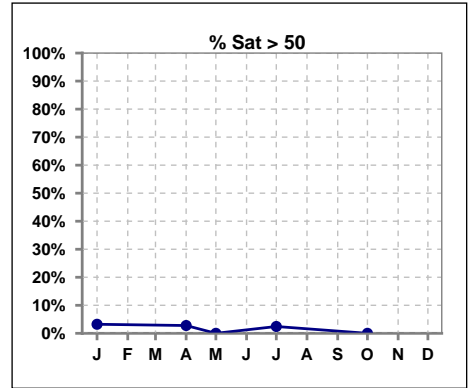
	Jan	Feb	Mar	Apr	May	Jun	Jul	Aug	Sep	Oct	Nov	Dec
# % Sat	31			36	8		41			46		
# % Sat < 30	12			21	5		25			23		
Pop. Mean	32			29	23		30			29		
Std. Deviation	12			11	11		13			8		
% % Sat < 30	39%			58%	63%		61%			50%		



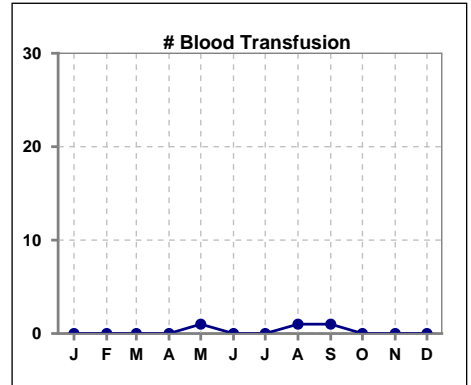
	Jan	Feb	Mar	Apr	May	Jun	Jul	Aug	Sep	Oct	Nov	Dec
# % Sat	31			36	8		41			46		
# % Sat 30 to 50	18			14	3		15			23		
Pop. Mean	32			29	23		30			29		
Std. Deviation	12			11	11		13			8		
% % Sat 30 to 50	58%			39%	38%		37%			50%		



	Jan	Feb	Mar	Apr	May	Jun	Jul	Aug	Sep	Oct	Nov	Dec
# % Sat	31			36	8		41			46		
# % Sat > 50	1			1	0		1			0		
Pop. Mean	32			29	23		30			29		
Std. Deviation	12			11	11		13			8		
% % Sat > 50	3%			3%	0%		2%			0%		



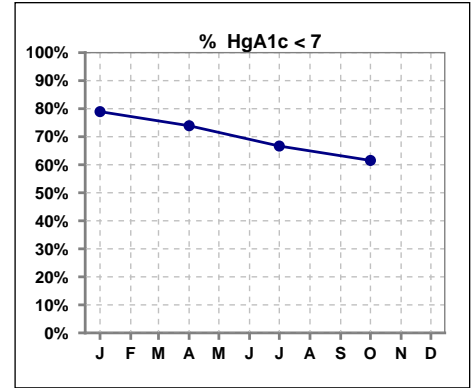
	Jan	Feb	Mar	Apr	May	Jun	Jul	Aug	Sep	Oct	Nov	Dec
# Patient	33	36	35	36	40	43	43	44	46	46	46	44
# Blood Transfusion	0	0	0	0	1	0	0	1	1	0	0	0



Methodology: a) All labs for 'Adequacy of Dialysis', 'Nutrition', 'Osteodystrophy', 'Anemia' and 'Diabetes' based on last value of month; b) BP's and #L processed are average of all values for month; c) Access data takes last access of month; d) Values for SGA and 'Infection Control' use most recent result.

VI. Diabetes

	Jan	Feb	Mar	Apr	May	Jun	Jul	Aug	Sep	Oct	Nov	Dec
# HgA1c	19			23			21			26		
# HgA1c < 7	15			17			14			16		
Pop. Mean	6.5			6.7			6.9			6.9		
Std. Deviation	1.93			2.17			1.91			1.67		
% HgA1c < 7	79%			74%			67%			62%		

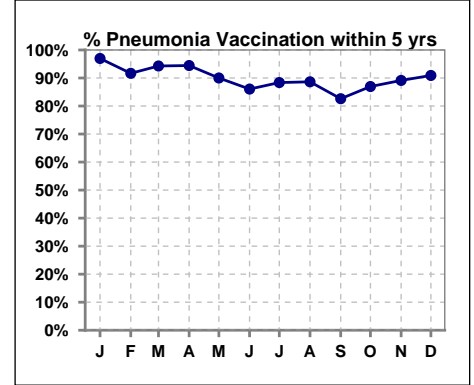


Methodology: a) All labs for 'Adequacy of Dialysis', 'Nutrition', 'Osteodystrophy', 'Anemia' and 'Diabetes' based on last value of month; b) BP's and #L processed are average of all values for month; c) Access data takes last access of month; d) Values for SGA and 'Infection Control' use most recent result.

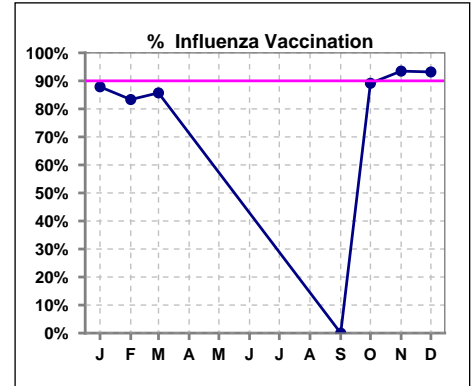
VII. Infection Control

Pneumonia vaccination within the past five years

	Jan	Feb	Mar	Apr	May	Jun	Jul	Aug	Sep	Oct	Nov	Dec
# Patient	33	36	35	36	40	43	43	44	46	46	46	44
# Pneumonia	32	33	33	34	36	37	38	39	38	40	41	40
% Pneumonia	97%	92%	94%	94%	90%	86%	88%	89%	83%	87%	89%	91%



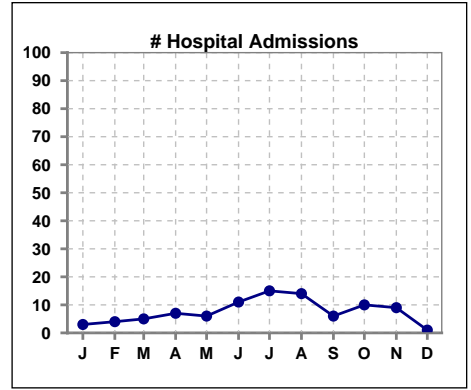
	Jan	Feb	Mar	Apr	May	Jun	Jul	Aug	Sep	Oct	Nov	Dec
# Patient	33	36	35						46	46	46	44
# Influenza	29	30	30						0	41	43	41
% Influenza	88%	83%	86%						0%	89%	93%	93%



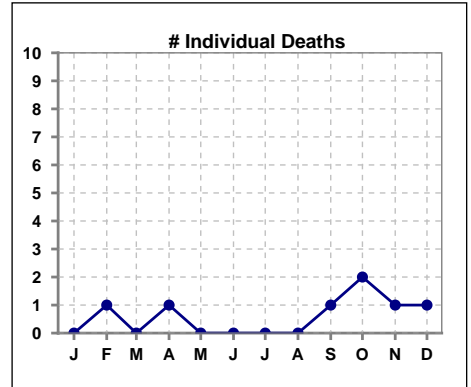
Methodology: a) All labs for 'Adequacy of Dialysis', 'Nutrition', 'Osteodystrophy', 'Anemia' and 'Diabetes' based on last value of month; b) BP's and #L processed are average of all values for month; c) Access data takes last access of month; d) Values for SGA and 'Infection Control' use most recent result.

VIII. Outcome measures

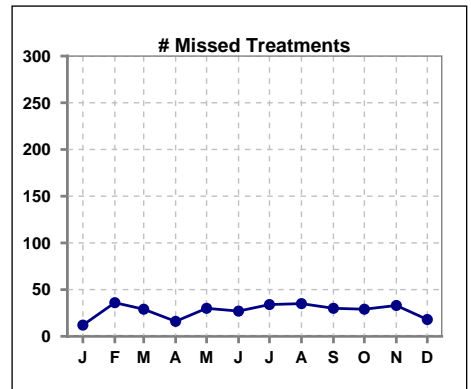
	Jan	Feb	Mar	Apr	May	Jun	Jul	Aug	Sep	Oct	Nov	Dec
# Patient	33	36	35	36	40	43	43	44	46	46	46	44
# Hospital Admissions	3	4	5	7	6	11	15	14	6	10	9	1



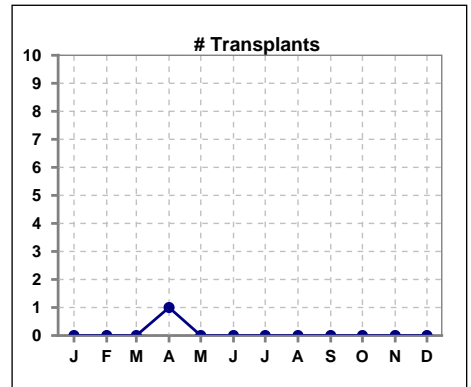
	Jan	Feb	Mar	Apr	May	Jun	Jul	Aug	Sep	Oct	Nov	Dec
# Patient	33	36	35	36	40	43	43	44	46	46	46	44
# Individual Deaths	0	1	0	1	0	0	0	0	1	2	1	1



	Jan	Feb	Mar	Apr	May	Jun	Jul	Aug	Sep	Oct	Nov	Dec
# Patient	33	36	35	36	40	43	43	44	46	46	46	44
# Missed Treatments	12	36	29	16	30	27	34	35	30	29	33	18



	Jan	Feb	Mar	Apr	May	Jun	Jul	Aug	Sep	Oct	Nov	Dec
# Patient	33	36	35	36	40	43	43	44	46	46	46	44
# Transplants	0	0	0	1	0	0	0	0	0	0	0	0



Methodology: a) All labs for 'Adequacy of Dialysis', 'Nutrition', 'Osteodystrophy', 'Anemia' and 'Diabetes' based on last value of month; b) BP's and #L processed are average of all values for month; c) Access data takes last access of month; d) Values for SGA and 'Infection Control' use most recent result.