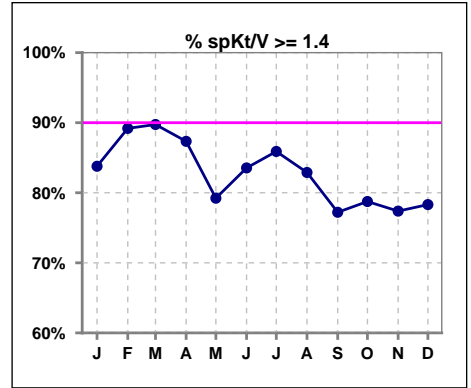
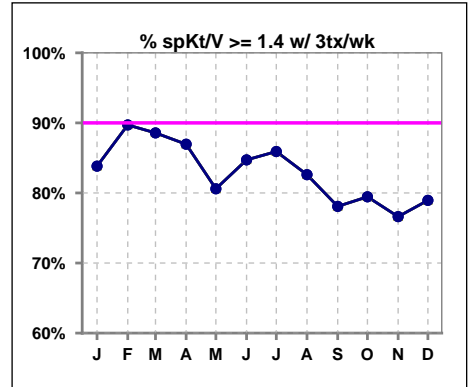


**I. ADEQUACY OF DIALYSIS**

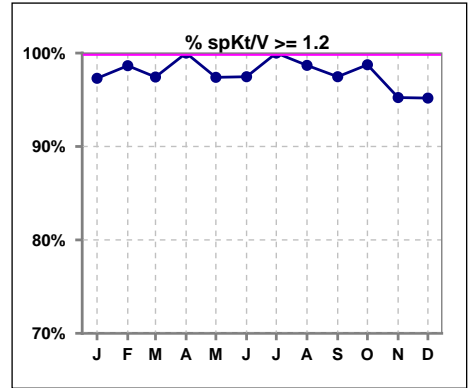
	Jan	Feb	Mar	Apr	May	Jun	Jul	Aug	Sep	Oct	Nov	Dec
# spKt/V	74	74	78	79	77	79	78	76	79	80	84	83
# spKt/V >= 1.4	62	66	70	69	61	66	67	63	61	63	65	65
Pop. Mean	1.66	1.70	1.68	1.65	1.66	1.65	1.65	1.63	1.62	1.61	1.58	1.58
Std. Deviation	0.29	0.32	0.27	0.25	0.30	0.29	0.27	0.28	0.30	0.26	0.27	0.28
% spKt/V >= 1.4	84%	89%	90%	87%	79%	84%	86%	83%	77%	79%	77%	78%



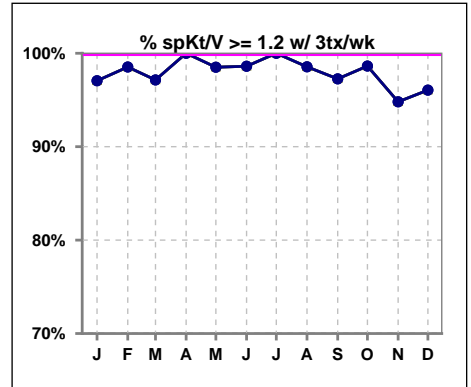
	Jan	Feb	Mar	Apr	May	Jun	Jul	Aug	Sep	Oct	Nov	Dec
# spKt/V w/ 3tx/wk	68	68	70	69	67	72	71	69	73	73	77	76
# spKt/V >= 1.4 w/3tx/wk	57	61	62	60	54	61	61	57	57	58	59	60
Pop. Mean	1.66	1.70	1.67	1.65	1.67	1.66	1.65	1.63	1.62	1.61	1.58	1.58
Std. Deviation	0.29	0.32	0.25	0.25	0.29	0.28	0.27	0.27	0.29	0.24	0.26	0.27
% >= 1.4 w/3tx/wk	84%	90%	89%	87%	81%	85%	86%	83%	78%	79%	77%	79%



	Jan	Feb	Mar	Apr	May	Jun	Jul	Aug	Sep	Oct	Nov	Dec
# spKt/V	74	74	78	79	77	79	78	76	79	80	84	83
# spKt/V >= 1.2	72	73	76	79	75	77	78	75	77	79	80	79
Pop. Mean	1.66	1.70	1.68	1.65	1.66	1.65	1.65	1.63	1.62	1.61	1.58	1.58
Std. Deviation	0.29	0.32	0.27	0.25	0.30	0.29	0.27	0.28	0.30	0.26	0.27	0.28
% spKt/V >= 1.2	97%	99%	97%	100%	97%	97%	100%	99%	97%	99%	95%	95%



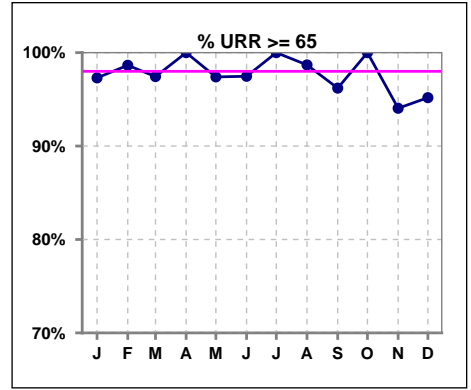
	Jan	Feb	Mar	Apr	May	Jun	Jul	Aug	Sep	Oct	Nov	Dec
# spKt/V w/ 3tx/wk	68	68	70	69	67	72	71	69	73	73	77	76
# spKt/V >= 1.2 w/3tx/wk	66	67	68	69	66	71	71	68	71	72	73	73
Pop. Mean	1.66	1.70	1.67	1.65	1.67	1.66	1.65	1.63	1.62	1.61	1.58	1.58
Std. Deviation	0.29	0.32	0.25	0.25	0.29	0.28	0.27	0.27	0.29	0.24	0.26	0.27
% >= 1.2 w/3tx/wk	97%	99%	97%	100%	99%	99%	100%	99%	97%	99%	95%	96%



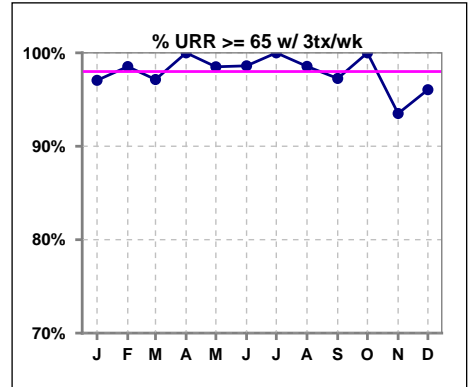
Methodology: a) All labs for 'Adequacy of Dialysis', 'Nutrition', 'Osteodystrophy', 'Anemia' and 'Diabetes' based on last value of month; b) BP's and #L processed are average of all values for month; c) Access data takes last access of month; d) Values for SGA and 'Infection Control' use most recent result.

**I. ADEQUACY OF DIALYSIS - CONT.**

	Jan	Feb	Mar	Apr	May	Jun	Jul	Aug	Sep	Oct	Nov	Dec
# URR	74	74	78	79	77	79	78	76	79	80	84	83
# URR >= 65	72	73	76	79	75	77	78	75	76	80	79	79
Pop. Mean	76	77	77	76	76	76	76	76	75	75	74	74
Std. Deviation	5.73	5.49	5.21	4.91	5.76	5.57	4.90	6.07	6.70	5.03	6.16	6.44
% URR >= 65	97%	99%	97%	100%	97%	97%	100%	99%	96%	100%	94%	95%



	Jan	Feb	Mar	Apr	May	Jun	Jul	Aug	Sep	Oct	Nov	Dec
# URR w/ 3tx/wk	68	68	70	69	67	72	71	69	73	73	77	76
# URR>=65 w/ 3tx/wk	66	67	68	69	66	71	71	68	71	73	72	73
Pop. Mean	76	77	76	76	76	76	76	76	75	75	74	75
Std. Deviation	5.83	5.55	5.19	4.85	5.57	5.22	4.83	6.11	6.63	4.95	6.12	6.29
% URR>=65 w/ 3tx/wk	97%	99%	97%	100%	99%	99%	100%	99%	97%	100%	94%	96%

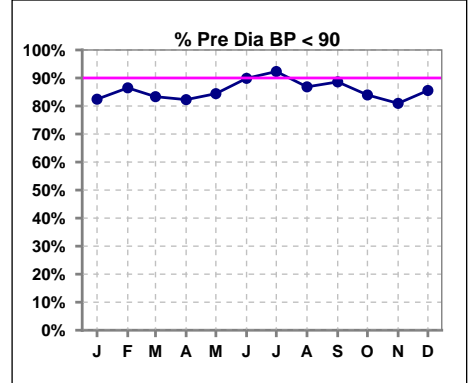


Methodology: a) All labs for 'Adequacy of Dialysis', 'Nutrition', 'Osteodystrophy', 'Anemia' and 'Diabetes' based on last value of month; b) BP's and #L processed are average of all values for month; c) Access data takes last access of month; d) Values for SGA and 'Infection Control' use most recent result.

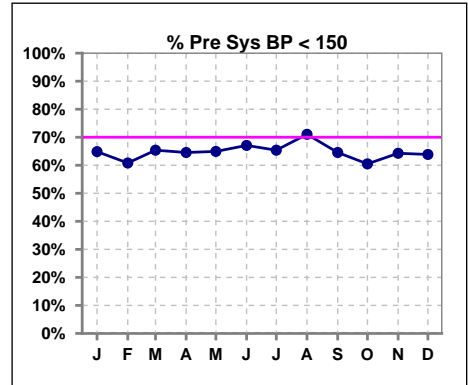
**I. ADEQUACY OF DIALYSIS - CONT.**

**Blood Pressure Control (Pre)**

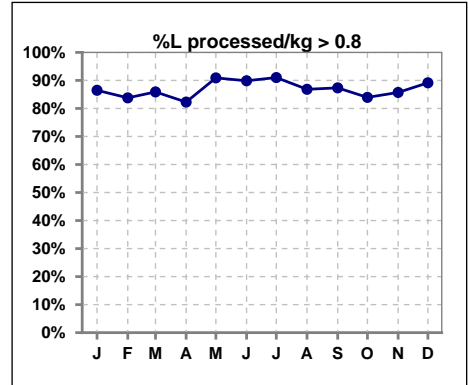
	Jan	Feb	Mar	Apr	May	Jun	Jul	Aug	Sep	Oct	Nov	Dec
# Pre Dia BP	74	74	78	79	77	79	78	76	79	81	84	83
# Pre Dia BP < 90	61	64	65	65	65	71	72	66	70	68	68	71
Pop. Mean	77	76	77	76	76	76	75	75	76	78	77	77
Std. Deviation	12.1	11.6	11.4	12.1	12.4	11.2	11.3	11.9	11.6	12.3	12.3	11.9
% Pre Dia BP < 90	82%	86%	83%	82%	84%	90%	92%	87%	89%	84%	81%	86%



	Jan	Feb	Mar	Apr	May	Jun	Jul	Aug	Sep	Oct	Nov	Dec
# Pre Sys BP	74	74	78	79	77	79	78	76	79	81	84	83
# Pre Sys BP < 150	48	45	51	51	50	53	51	54	51	49	54	53
Pop. Mean	143	142	143	142	141	142	141	140	141	146	144	144
Std. Deviation	19.3	18.9	18.4	18.2	19.1	17.4	18.0	19.0	17.3	19.5	19.9	19.7
%Pre Sys BP <150	65%	61%	65%	65%	65%	67%	65%	71%	65%	60%	64%	64%



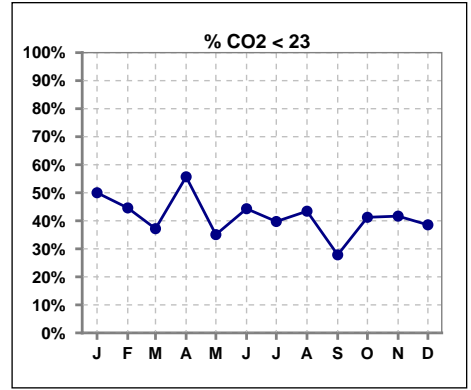
	Jan	Feb	Mar	Apr	May	Jun	Jul	Aug	Sep	Oct	Nov	Dec
# L processed/kg	74	74	78	79	77	79	78	76	79	81	84	83
# L processed/kg>0.8	64	62	67	65	70	71	71	66	69	68	72	74
Pop. Mean	1	1	1	1	1	1	1	1	1	1	1	1
Std. Deviation	0.3	0.3	0.3	0.3	0.3	0.3	0.3	0.3	0.3	0.3	0.3	0.3
% L processed/kg>0.8	86%	84%	86%	82%	91%	90%	91%	87%	87%	84%	86%	89%



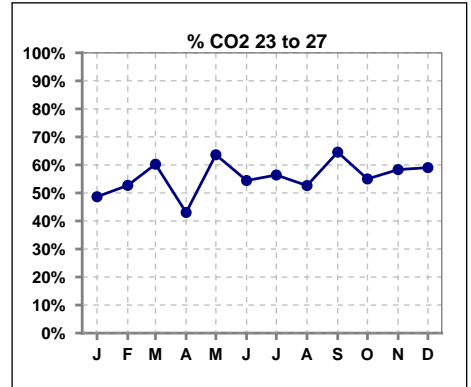
Methodology: a) All labs for 'Adequacy of Dialysis', 'Nutrition', 'Osteodystrophy', 'Anemia' and 'Diabetes' based on last value of month; b) BP's and #L processed are average of all values for month; c) Access data takes last access of month; d) Values for SGA and 'Infection Control' use most recent result.

**I. ADEQUACY OF DIALYSIS - CONT.**

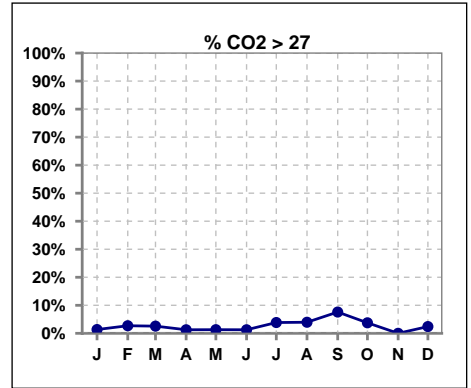
	Jan	Feb	Mar	Apr	May	Jun	Jul	Aug	Sep	Oct	Nov	Dec
# CO2	74	74	78	79	77	79	78	76	79	80	84	83
# CO2 < 23	37	33	29	44	27	35	31	33	22	33	35	32
Pop. Mean	22	23	23	23	23	23	23	23	24	23	23	23
Std. Deviation	1.87	2.26	2.25	2.16	2.03	2.11	2.42	2.33	2.44	2.19	2.11	2.15
% CO2 < 23	50%	45%	37%	56%	35%	44%	40%	43%	28%	41%	42%	39%



	Jan	Feb	Mar	Apr	May	Jun	Jul	Aug	Sep	Oct	Nov	Dec
# CO2	74	74	78	79	77	79	78	76	79	80	84	83
# CO2 23 to 27	36	39	47	34	49	43	44	40	51	44	49	49
Pop. Mean	22	23	23	23	23	23	23	23	24	23	23	23
Std. Deviation	1.87	2.26	2.25	2.16	2.03	2.11	2.42	2.33	2.44	2.19	2.11	2.15
% CO2 23 to 27	49%	53%	60%	43%	64%	54%	56%	53%	65%	55%	58%	59%



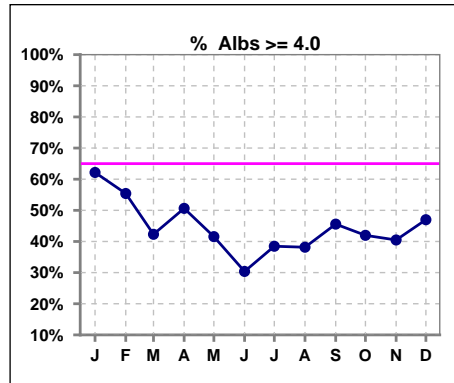
	Jan	Feb	Mar	Apr	May	Jun	Jul	Aug	Sep	Oct	Nov	Dec
# CO2	74	74	78	79	77	79	78	76	79	80	84	83
# CO2 > 27	1	2	2	1	1	1	3	3	6	3	0	2
Pop. Mean	22	23	23	23	23	23	23	23	24	23	23	23
Std. Deviation	1.87	2.26	2.25	2.16	2.03	2.11	2.42	2.33	2.44	2.19	2.11	2.15
% CO2 > 27	1%	3%	3%	1%	1%	1%	4%	4%	8%	4%	0%	2%



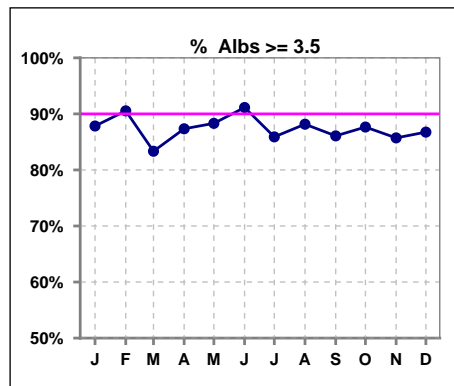
\*Albumin values use BCG method - as of July 2001

**II. NUTRITION**

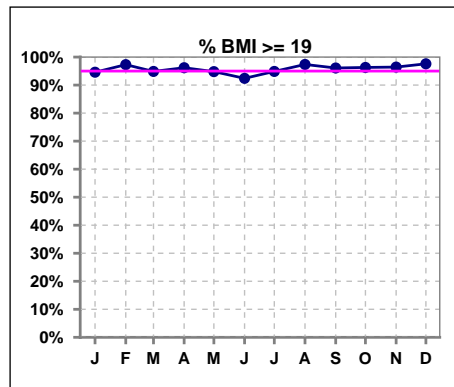
	Jan	Feb	Mar	Apr	May	Jun	Jul	Aug	Sep	Oct	Nov	Dec
# Albumin	74	74	78	79	77	79	78	76	79	81	84	83
# Albumin >= 4.0	46	41	33	40	32	24	30	29	36	34	34	39
Pop. Mean	4.0	4.0	3.8	3.9	3.8	3.8	3.8	3.8	3.9	3.8	3.8	3.9
Std. Deviation	0.47	0.49	0.47	0.45	0.42	0.38	0.42	0.40	0.42	0.43	0.43	0.41
% Alb >= 4.0	62%	55%	42%	51%	42%	30%	38%	38%	46%	42%	40%	47%



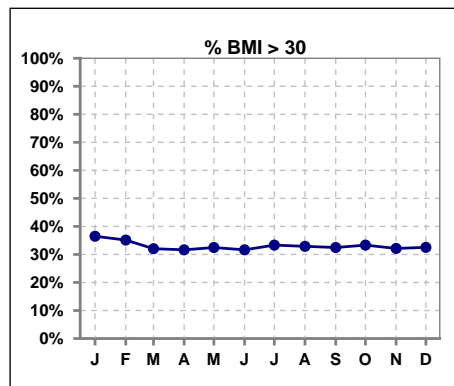
	Jan	Feb	Mar	Apr	May	Jun	Jul	Aug	Sep	Oct	Nov	Dec
# Albumin	74	74	78	79	77	79	78	76	79	81	84	83
# Albumin >= 3.5	65	67	65	69	68	72	67	67	68	71	72	72
Pop. Mean	4.0	4.0	3.8	3.9	3.8	3.8	3.8	3.8	3.9	3.8	3.8	3.9
Std. Deviation	0.47	0.49	0.47	0.45	0.42	0.38	0.42	0.40	0.42	0.43	0.43	0.41
% Alb >= 3.5	88%	91%	83%	87%	88%	91%	86%	88%	86%	88%	86%	87%



	Jan	Feb	Mar	Apr	May	Jun	Jul	Aug	Sep	Oct	Nov	Dec
# BMI	74	74	78	79	77	79	78	76	77	81	84	83
# BMI >= 19	70	72	74	76	73	73	74	74	74	78	81	81
Pop. Mean	28	29	28	28	28	28	28	28	28	28	28	29
Std. Deviation	7.2	7.0	6.8	6.4	6.5	6.5	6.4	6.4	6.4	6.2	6.8	7.3
% BMI >= 19	95%	97%	95%	96%	95%	92%	95%	97%	96%	96%	96%	98%



	Jan	Feb	Mar	Apr	May	Jun	Jul	Aug	Sep	Oct	Nov	Dec
# BMI	74	74	78	79	77	79	78	76	77	81	84	83
# BMI > 30	27	26	25	25	25	25	26	25	25	27	27	27
Pop. Mean	28	29	28	28	28	28	28	28	28	28	28	29
Std. Deviation	7.2	7.0	6.8	6.4	6.5	6.5	6.4	6.4	6.4	6.2	6.8	7.3
% BMI > 30	36%	35%	32%	32%	32%	32%	33%	33%	32%	33%	32%	33%

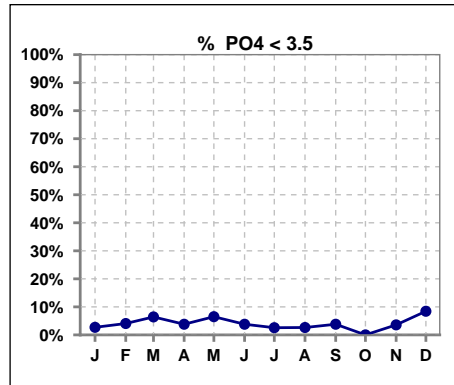


Methodology: a) All labs for 'Adequacy of Dialysis', 'Nutrition', 'Osteodystrophy', 'Anemia' and 'Diabetes' based on last value of month; b) BP's and #L processed are average of all values for month; c) Access data takes last access of month; d) Values for SGA and 'Infection Control' use most recent result.

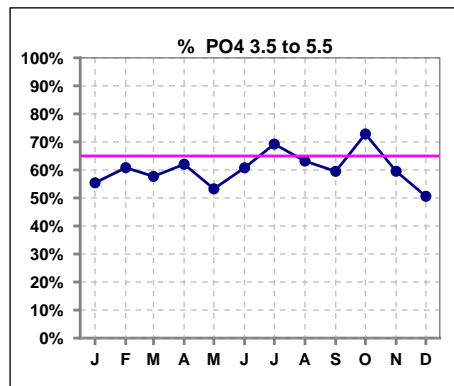
Lab methodology for PTH changed January 2012

**III. OSTEODYSTROPHY**

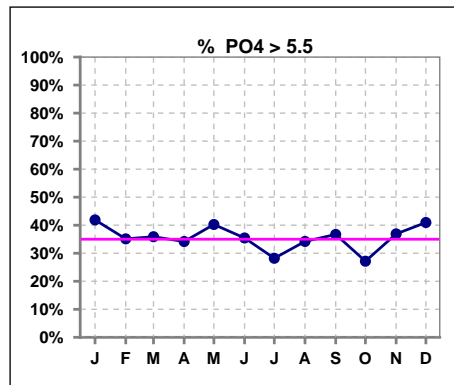
	Jan	Feb	Mar	Apr	May	Jun	Jul	Aug	Sep	Oct	Nov	Dec
# PO4	74	74	78	79	77	79	78	76	79	81	84	83
# PO4 < 3.5	2	3	5	3	5	3	2	2	3	0	3	7
Pop. Mean	5.6	5.6	5.6	5.4	5.7	5.5	5.3	5.4	5.5	5.2	5.4	5.6
Std. Deviation	1.77	1.93	1.81	1.58	1.83	1.61	1.44	1.57	1.61	1.33	1.62	1.73
% PO4 < 3.5	3%	4%	6%	4%	6%	4%	3%	3%	4%	0%	4%	8%



	Jan	Feb	Mar	Apr	May	Jun	Jul	Aug	Sep	Oct	Nov	Dec
# PO4	74	74	78	79	77	79	78	76	79	81	84	83
# PO4 3.5 to 5.5	41	45	45	49	41	48	54	48	47	59	50	42
Pop. Mean	5.6	5.6	5.6	5.4	5.7	5.5	5.3	5.4	5.5	5.2	5.4	5.6
Std. Deviation	1.77	1.93	1.81	1.58	1.83	1.61	1.44	1.57	1.61	1.33	1.62	1.73
% PO4 3.5 to 5.5	55%	61%	58%	62%	53%	61%	69%	63%	59%	73%	60%	51%



	Jan	Feb	Mar	Apr	May	Jun	Jul	Aug	Sep	Oct	Nov	Dec
# PO4	74	74	78	79	77	79	78	76	79	81	84	83
# PO4 > 5.5	31	26	28	27	31	28	22	26	29	22	31	34
Pop. Mean	5.6	5.6	5.6	5.4	5.7	5.5	5.3	5.4	5.5	5.2	5.4	5.6
Std. Deviation	1.77	1.93	1.81	1.58	1.83	1.61	1.44	1.57	1.61	1.33	1.62	1.73
% PO4 > 5.5	42%	35%	36%	34%	40%	35%	28%	34%	37%	27%	37%	41%

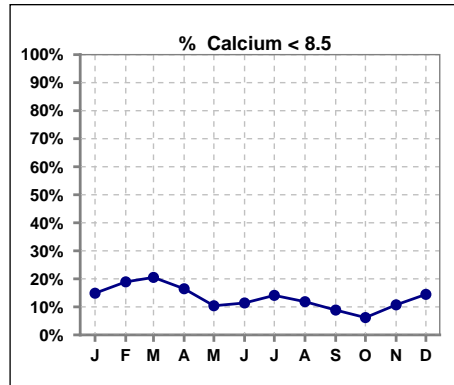


Methodology: a) All labs for 'Adequacy of Dialysis', 'Nutrition', 'Osteodystrophy', 'Anemia' and 'Diabetes' based on last value of month; b) BP's and #L processed are average of all values for month; c) Access data takes last access of month; d) Values for SGA and 'Infection Control' use most recent result.

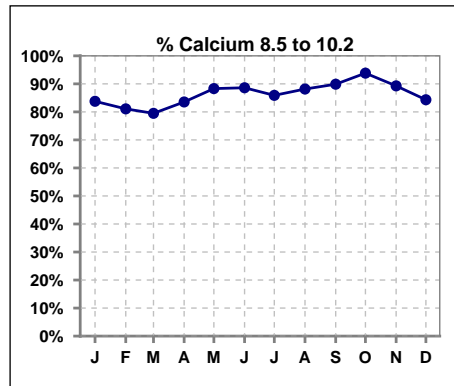
Lab methodology for PTH changed January 2012

**III. OSTEODYSTROPHY - CONT.**

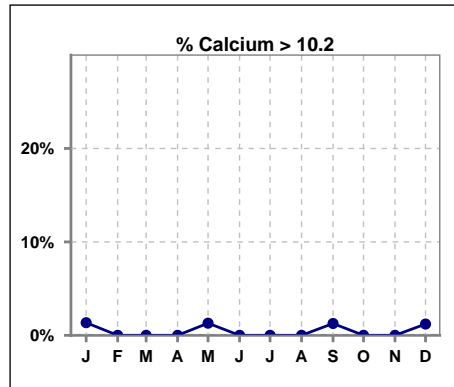
	Jan	Feb	Mar	Apr	May	Jun	Jul	Aug	Sep	Oct	Nov	Dec
# Calcium	74	74	78	79	77	79	78	76	79	81	84	83
# Calcium < 8.5	11	14	16	13	8	9	11	9	7	5	9	12
Pop. Mean	9.2	8.9	9.0	9.0	9.1	9.1	9.0	9.1	9.1	9.3	9.1	9.1
Std. Deviation	0.66	0.65	0.58	0.55	0.62	0.55	0.51	0.60	0.62	0.53	0.58	0.64
% Calcium < 8.5	15%	19%	21%	16%	10%	11%	14%	12%	9%	6%	11%	14%



	Jan	Feb	Mar	Apr	May	Jun	Jul	Aug	Sep	Oct	Nov	Dec
# Calcium	74	74	78	79	77	79	78	76	79	81	84	83
# Calcium 8.5 to 10.2	62	60	62	66	68	70	67	67	71	76	75	70
Pop. Mean	9.2	8.9	9.0	9.0	9.1	9.1	9.0	9.1	9.1	9.3	9.1	9.1
Std. Deviation	0.66	0.65	0.58	0.55	0.62	0.55	0.51	0.60	0.62	0.53	0.58	0.64
% Calcium 8.5 to 10.2	84%	81%	79%	84%	88%	89%	86%	88%	90%	94%	89%	84%



	Jan	Feb	Mar	Apr	May	Jun	Jul	Aug	Sep	Oct	Nov	Dec
# Calcium	74	74	78	79	77	79	78	76	79	81	84	83
# Calcium > 10.2	1	0	0	0	1	0	0	0	1	0	0	1
Pop. Mean	9.2	8.9	9.0	9.0	9.1	9.1	9.0	9.1	9.1	9.3	9.1	9.1
Std. Deviation	0.66	0.65	0.58	0.55	0.62	0.55	0.51	0.60	0.62	0.53	0.58	0.64
% Calcium > 10.2	1%	0%	0%	0%	1%	0%	0%	0%	1%	0%	0%	1%

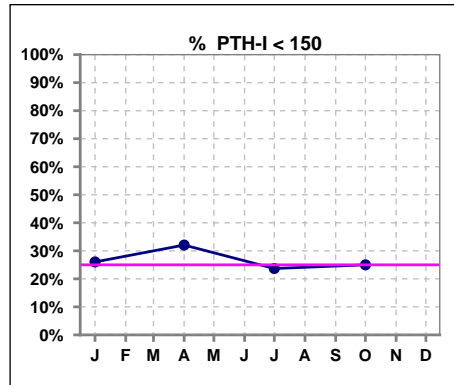


Methodology: a) All labs for 'Adequacy of Dialysis', 'Nutrition', 'Osteodystrophy', 'Anemia' and 'Diabetes' based on last value of month; b) BP's and #L processed are average of all values for month; c) Access data takes last access of month; d) Values for SGA and 'Infection Control' use most recent result.

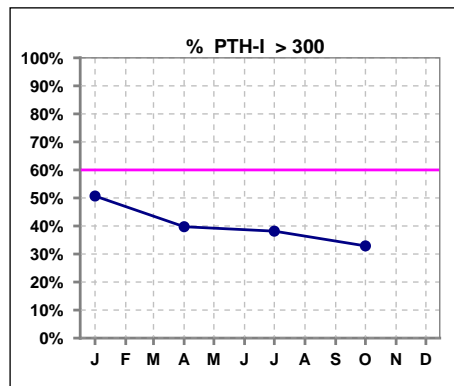
Lab methodology for PTH changed January 2012

**III. OSTEODYSTROPHY - CONT.**

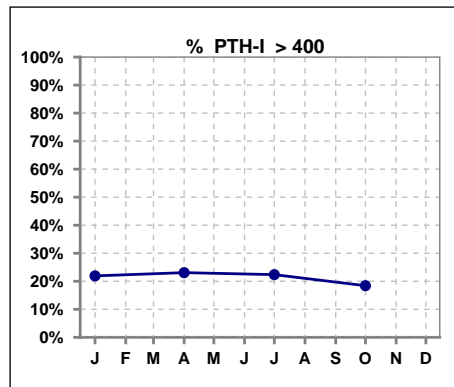
	Jan	Feb	Mar	Apr	May	Jun	Jul	Aug	Sep	Oct	Nov	Dec
# PTH-I	73			78			76			76		
# PTH-I < 150	19			25			18			19		
Pop. Mean	306			308			289			267		
Std. Deviation	224			282			183			186		
% PTH-I < 150	26%			32%			24%			25%		



	Jan	Feb	Mar	Apr	May	Jun	Jul	Aug	Sep	Oct	Nov	Dec
# PTH-I	73			78			76			76		
# PTH-I > 300	37			31			29			25		
Pop. Mean	306			308			289			267		
Std. Deviation	224			282			183			186		
% PTH-I > 300	51%			40%			38%			33%		



	Jan	Feb	Mar	Apr	May	Jun	Jul	Aug	Sep	Oct	Nov	Dec
# PTH-I	73			78			76			76		
# PTH-I > 400	16			18			17			14		
Pop. Mean	306			308			289			267		
Std. Deviation	224			282			183			186		
% PTH-I > 400	22%			23%			22%			18%		

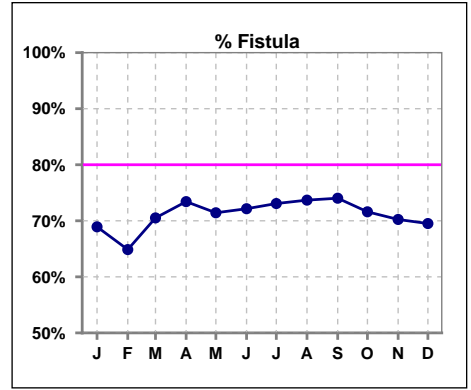


Methodology: a) All labs for 'Adequacy of Dialysis', 'Nutrition', 'Osteodystrophy', 'Anemia' and 'Diabetes' based on last value of month; b) BP's and #L processed are average of all values for month; c) Access data takes last access of month; d) Values for SGA and 'Infection Control' use most recent result.

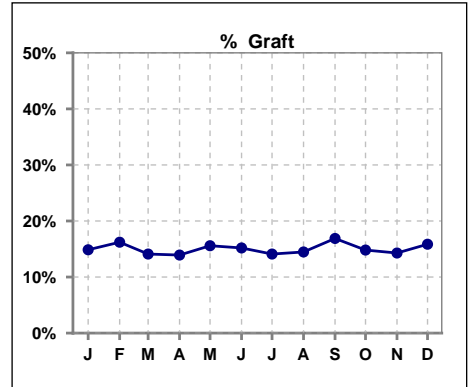


**IV. ACCESS**

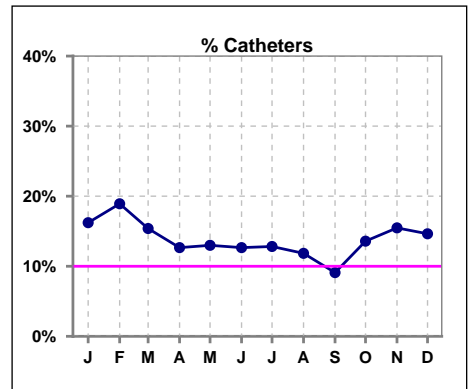
	Jan	Feb	Mar	Apr	May	Jun	Jul	Aug	Sep	Oct	Nov	Dec
# Access	74	74	78	79	77	79	78	76	77	81	84	82
# Fistula	51	48	55	58	55	57	57	56	57	58	59	57
% Fistula	69%	65%	71%	73%	71%	72%	73%	74%	74%	72%	70%	70%



	Jan	Feb	Mar	Apr	May	Jun	Jul	Aug	Sep	Oct	Nov	Dec
# Access	74	74	78	79	77	79	78	76	77	81	84	82
# Graft	11	12	11	11	12	12	11	11	13	12	12	13
% Graft	15%	16%	14%	14%	16%	15%	14%	14%	17%	15%	14%	16%



	Jan	Feb	Mar	Apr	May	Jun	Jul	Aug	Sep	Oct	Nov	Dec
# Access	74	74	78	79	77	79	78	76	77	81	84	82
# Catheters	12	14	12	10	10	10	10	9	7	11	13	12
% Catheters	16%	19%	15%	13%	13%	13%	13%	12%	9%	14%	15%	15%



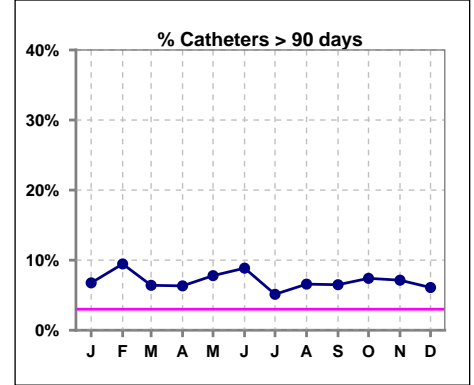
Methodology: a) All labs for 'Adequacy of Dialysis', 'Nutrition', 'Osteodystrophy', 'Anemia' and 'Diabetes' based on last value of month; b) BP's and #L processed are average of all values for month; c) Access data takes last access of month; d) Values for SGA and 'Infection Control' use most recent result.

**IV. ACCESS - CONT.**

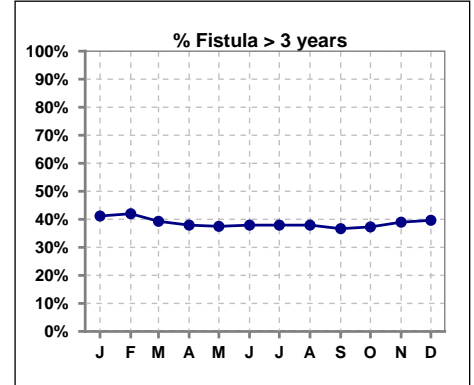
**Catheters > 90 days**

	Jan	Feb	Mar	Apr	May	Jun	Jul	Aug	Sep	Oct	Nov	Dec
# Access	74	74	78	79	77	79	78	76	77	81	84	82
# Catheters	5	7	5	5	6	7	4	5	5	6	6	5
% Catheters	7%	9%	6%	6%	8%	9%	5%	7%	6%	7%	7%	6%

Definition: Catheter in use on last treatment of the month



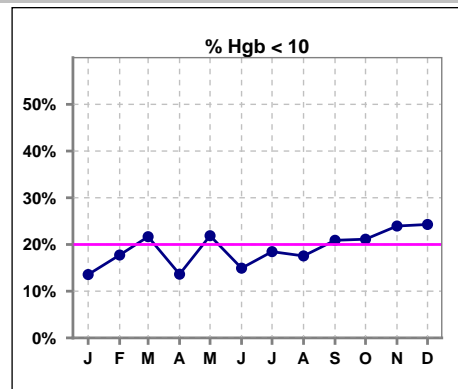
	Jan	Feb	Mar	Apr	May	Jun	Jul	Aug	Sep	Oct	Nov	Dec
# Fistula	51	50	56	58	56	58	58	58	60	59	59	58
# Fistula > 3 yrs	21	21	22	22	21	22	22	22	22	22	23	23
% Fistula > 3 yrs	41%	42%	39%	38%	38%	38%	38%	38%	37%	37%	39%	40%



**V. ANEMIA**

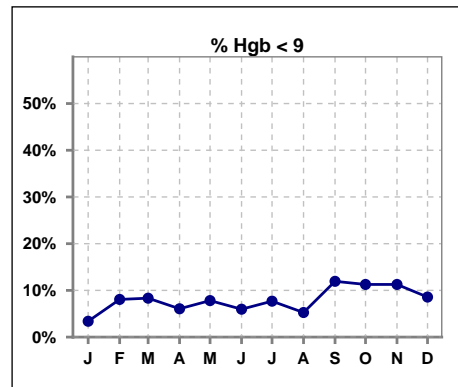
	Jan	Feb	Mar	Apr	May	Jun	Jul	Aug	Sep	Oct	Nov	Dec
# Hgb	59	62	60	66	64	67	65	57	67	71	71	70
# Hgb < 10	8	11	13	9	14	10	12	10	14	15	17	17
Pop. Mean	10.9	10.8	10.5	10.7	10.7	10.8	10.8	10.7	10.6	10.6	10.6	10.5
Std. Deviation	1.0	1.4	1.2	1.0	1.2	1.1	1.0	1.0	1.3	1.2	1.3	1.0
% Hgb < 10	14%	18%	22%	14%	22%	15%	18%	18%	21%	21%	24%	24%

Note: Excludes patients who received no ESA in month.



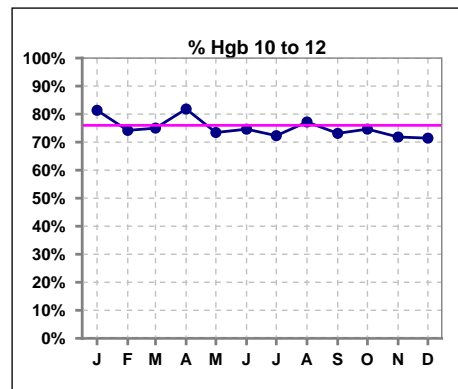
	Jan	Feb	Mar	Apr	May	Jun	Jul	Aug	Sep	Oct	Nov	Dec
# Hgb	59	62	60	66	64	67	65	57	67	71	71	70
# Hgb < 9	2	5	5	4	5	4	5	3	8	8	8	6
Pop. Mean	10.9	10.8	10.5	10.7	10.7	10.8	10.8	10.7	10.6	10.6	10.6	10.5
Std. Deviation	1.0	1.4	1.2	1.0	1.2	1.1	1.0	1.0	1.3	1.2	1.3	1.0
% Hgb < 9	3%	8%	8%	6%	8%	6%	8%	5%	12%	11%	11%	9%

Note: Excludes patients who received no ESA in month.



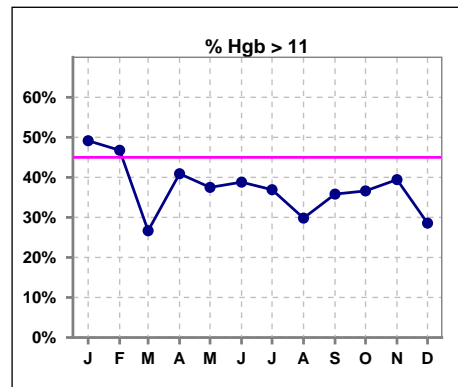
	Jan	Feb	Mar	Apr	May	Jun	Jul	Aug	Sep	Oct	Nov	Dec
# Hgb	59	62	60	66	64	67	65	57	67	71	71	70
# Hgb 10 to 12	48	46	45	54	47	50	47	44	49	53	51	50
Pop. Mean	10.9	10.8	10.5	10.7	10.7	10.8	10.8	10.7	10.6	10.6	10.6	10.5
Std. Deviation	1.0	1.4	1.2	1.0	1.2	1.1	1.0	1.0	1.3	1.2	1.3	1.0
% Hgb 10 to 12	81%	74%	75%	82%	73%	75%	72%	77%	73%	75%	72%	71%

Note: Excludes patients who received no ESA in month.



	Jan	Feb	Mar	Apr	May	Jun	Jul	Aug	Sep	Oct	Nov	Dec
# Hgb	59	62	60	66	64	67	65	57	67	71	71	70
# Hgb > 11	29	29	16	27	24	26	24	17	24	26	28	20
Pop. Mean	10.9	10.8	10.5	10.7	10.7	10.8	10.8	10.7	10.6	10.6	10.6	10.5
Std. Deviation	1.0	1.4	1.2	1.0	1.2	1.1	1.0	1.0	1.3	1.2	1.3	1.0
% Hgb > 11	49%	47%	27%	41%	38%	39%	37%	30%	36%	37%	39%	29%

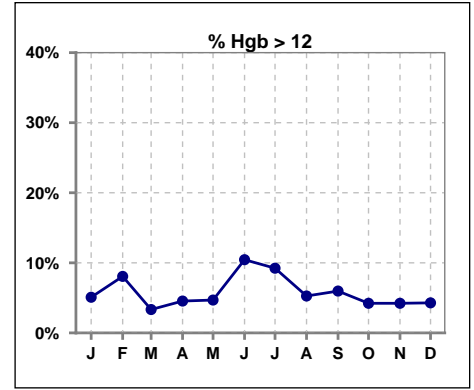
Note: Excludes patients who received no ESA in month.



**V. ANEMIA - CONT.**

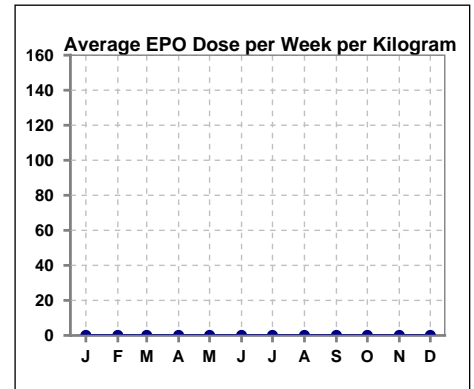
	Jan	Feb	Mar	Apr	May	Jun	Jul	Aug	Sep	Oct	Nov	Dec
# Hgb	59	62	60	66	64	67	65	57	67	71	71	70
# Hgb > 12	3	5	2	3	3	7	6	3	4	3	3	3
Pop. Mean	10.9	10.8	10.5	10.7	10.7	10.8	10.8	10.7	10.6	10.6	10.6	10.5
Std. Deviation	1.0	1.4	1.2	1.0	1.2	1.1	1.0	1.0	1.3	1.2	1.3	1.0
% Hgb > 12	5%	8%	3%	5%	5%	10%	9%	5%	6%	4%	4%	4%

Note: Excludes patients who received no ESA in month.



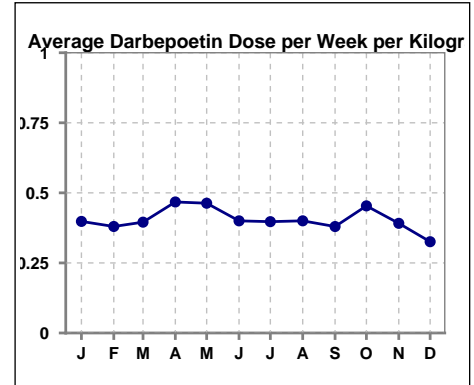
**Average EPO Dose per Week per Kilogram**

	Jan	Feb	Mar	Apr	May	Jun	Jul	Aug	Sep	Oct	Nov	Dec
# Average EPO	0	0	0	0	0	0	0	0	0	0	0	0



**Average Darbepoetin Dose per Week per Kilogram**

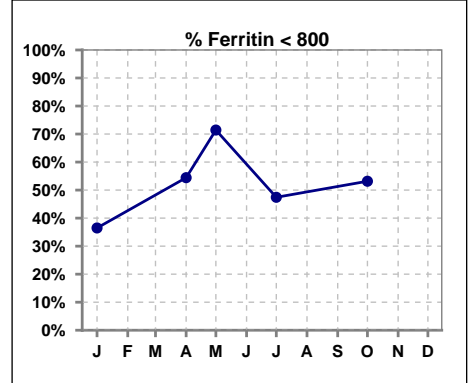
	Jan	Feb	Mar	Apr	May	Jun	Jul	Aug	Sep	Oct	Nov	Dec
# Average Darbepoetin	.4	.4	.4	.5	.5	.4	.4	.4	.4	.5	.4	.3



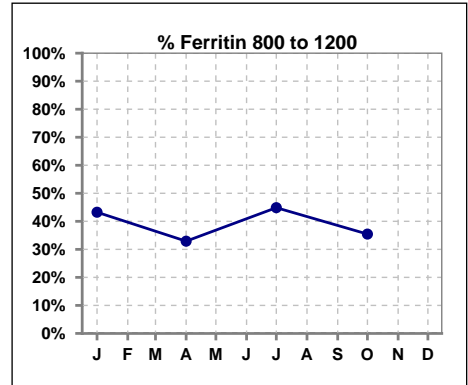
**V. ANEMIA - CONT.**

**Iron Profile**

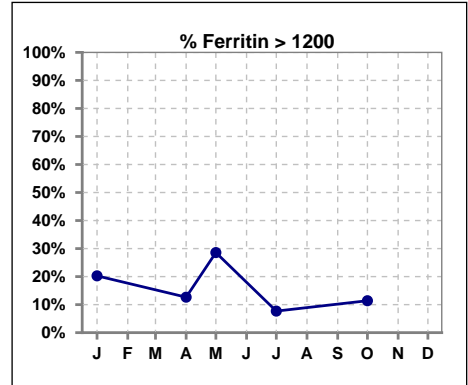
	Jan	Feb	Mar	Apr	May	Jun	Jul	Aug	Sep	Oct	Nov	Dec
# Ferritin	74			79	7		78			79		
# Ferritin < 800	27			43	5		37			42		
Pop. Mean	900			817	840		763			789		
Std. Deviation	354			330	528		327			338		
<b>% Ferritin &lt; 800</b>	<b>36%</b>			<b>54%</b>	<b>71%</b>		<b>47%</b>			<b>53%</b>		



	Jan	Feb	Mar	Apr	May	Jun	Jul	Aug	Sep	Oct	Nov	Dec
# Ferritin	74			79	7		78			79		
# Ferritin 800 to 1200	32			26			35			28		
Pop. Mean	900			817	840		763			789		
Std. Deviation	354			330	528		327			338		
<b>% Ferritin 800 to 1200</b>	<b>43%</b>			<b>33%</b>			<b>45%</b>			<b>35%</b>		

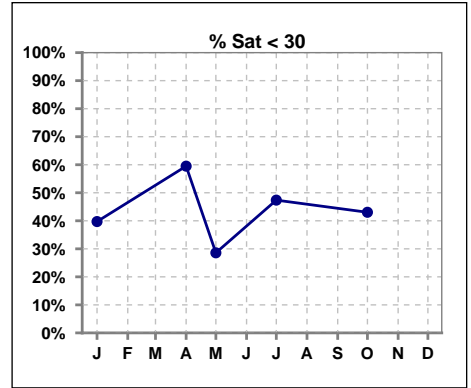


	Jan	Feb	Mar	Apr	May	Jun	Jul	Aug	Sep	Oct	Nov	Dec
# Ferritin	74			79	7		78			79		
# Ferritin > 1200	15			10	2		6			9		
Pop. Mean	900			817	840		763			789		
Std. Deviation	354			330	528		327			338		
<b>% Ferritin &gt; 1200</b>	<b>20%</b>			<b>13%</b>	<b>29%</b>		<b>8%</b>			<b>11%</b>		

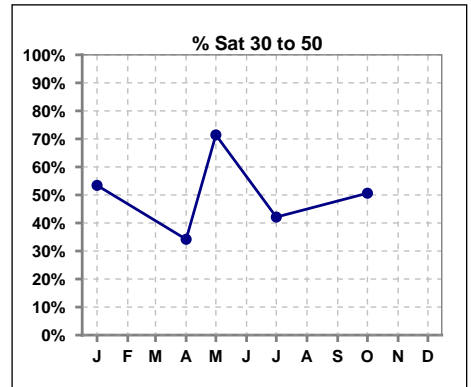


**V. ANEMIA - CONT.**

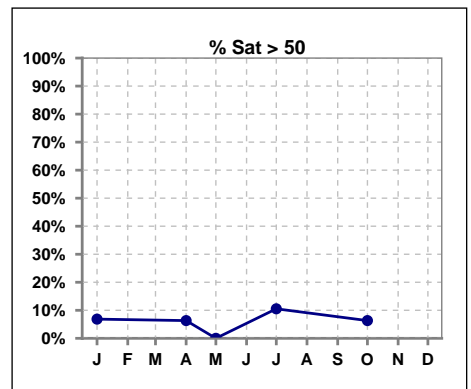
	Jan	Feb	Mar	Apr	May	Jun	Jul	Aug	Sep	Oct	Nov	Dec
# % Sat	73			79	7		76			79		
# % Sat < 30	29			47	2		36			34		
Pop. Mean	34			29	36		32			32		
Std. Deviation	14			12	11		13			12		
<b>% % Sat &lt; 30</b>	<b>40%</b>			<b>59%</b>	<b>29%</b>		<b>47%</b>			<b>43%</b>		



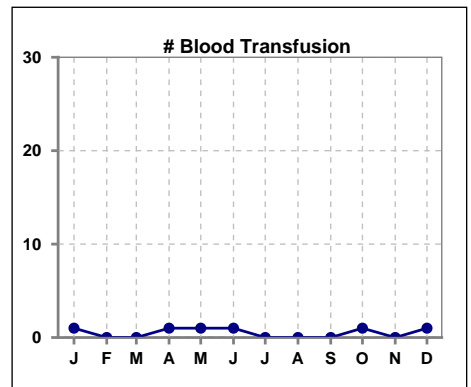
	Jan	Feb	Mar	Apr	May	Jun	Jul	Aug	Sep	Oct	Nov	Dec
# % Sat	73			79	7		76			79		
# % Sat 30 to 50	39			27	5		32			40		
Pop. Mean	34			29	36		32			32		
Std. Deviation	14			12	11		13			12		
<b>% % Sat 30 to 50</b>	<b>53%</b>			<b>34%</b>	<b>71%</b>		<b>42%</b>			<b>51%</b>		



	Jan	Feb	Mar	Apr	May	Jun	Jul	Aug	Sep	Oct	Nov	Dec
# % Sat	73			79	7		76			79		
# % Sat > 50	5			5	0		8			5		
Pop. Mean	34			29	36		32			32		
Std. Deviation	14			12	11		13			12		
<b>% % Sat &gt; 50</b>	<b>7%</b>			<b>6%</b>	<b>0%</b>		<b>11%</b>			<b>6%</b>		



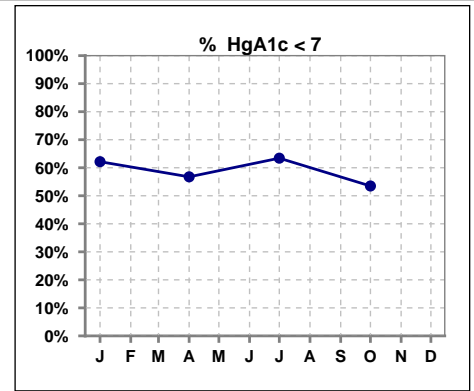
	Jan	Feb	Mar	Apr	May	Jun	Jul	Aug	Sep	Oct	Nov	Dec
# Patient	74	74	78	79	77	79	78	76	79	81	84	83
# Blood Transfusion	1	0	0	1	1	1	0	0	0	1	0	1



Methodology: a) All labs for 'Adequacy of Dialysis', 'Nutrition', 'Osteodystrophy', 'Anemia' and 'Diabetes' based on last value of month; b) BP's and #L processed are average of all values for month; c) Access data takes last access of month; d) Values for SGA and 'Infection Control' use most recent result.

**VI. Diabetes**

	Jan	Feb	Mar	Apr	May	Jun	Jul	Aug	Sep	Oct	Nov	Dec
# HgA1c	37			37			41			43		
# HgA1c < 7	23			21			26			23		
Pop. Mean	6.7			6.9			6.6			6.9		
Std. Deviation	1.37			1.81			1.24			1.56		
<b>% HgA1c &lt; 7</b>	<b>62%</b>			<b>57%</b>			<b>63%</b>			<b>53%</b>		

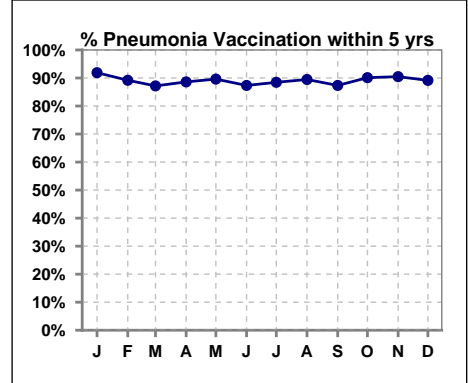


Methodology: a) All labs for 'Adequacy of Dialysis', 'Nutrition', 'Osteodystrophy', 'Anemia' and 'Diabetes' based on last value of month; b) BP's and #L processed are average of all values for month; c) Access data takes last access of month; d) Values for SGA and 'Infection Control' use most recent result.

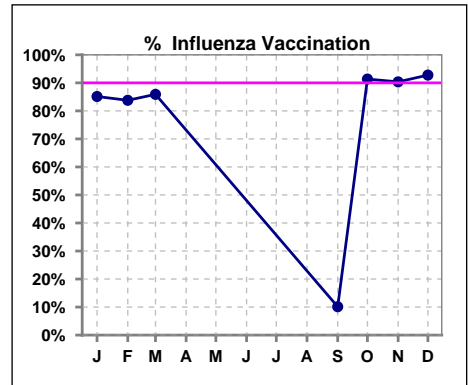
**VII. Infection Control**

**Pneumonia vaccination within the past five years**

	Jan	Feb	Mar	Apr	May	Jun	Jul	Aug	Sep	Oct	Nov	Dec
# Patient	74	74	78	79	77	79	78	76	79	81	84	83
# Pneumonia	68	66	68	70	69	69	69	68	69	73	76	74
% Pneumonia	92%	89%	87%	89%	90%	87%	88%	89%	87%	90%	90%	89%



	Jan	Feb	Mar	Apr	May	Jun	Jul	Aug	Sep	Oct	Nov	Dec
# Patient	74	74	78						79	81	83	83
# Influenza	63	62	67						8	74	75	77
% Influenza	85%	84%	86%						10%	91%	90%	93%

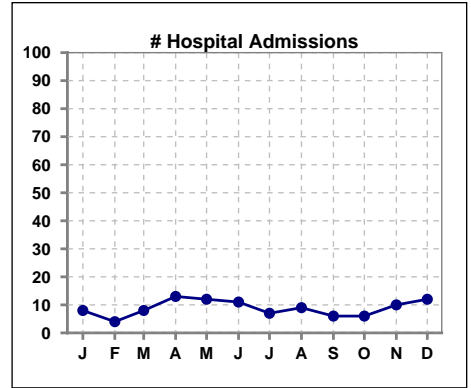


Methodology: a) All labs for 'Adequacy of Dialysis', 'Nutrition', 'Osteodystrophy', 'Anemia' and 'Diabetes' based on last value of month; b) BP's and #L processed are average of all values for month; c) Access data takes last access of month; d) Values for SGA and 'Infection Control' use most recent result.

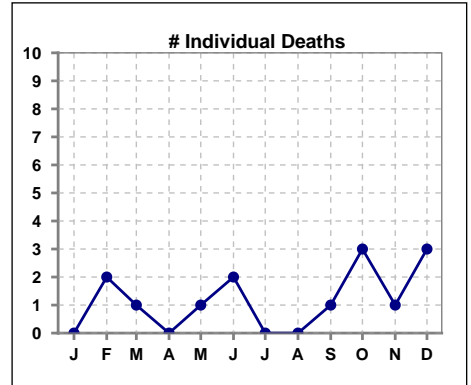


**VIII. Outcome measures**

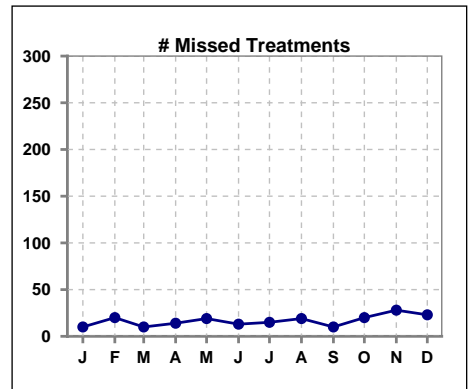
	Jan	Feb	Mar	Apr	May	Jun	Jul	Aug	Sep	Oct	Nov	Dec
# Patient	74	74	78	79	77	79	78	76	79	81	84	83
# Hospital Admissions	8	4	8	13	12	11	7	9	6	6	10	12



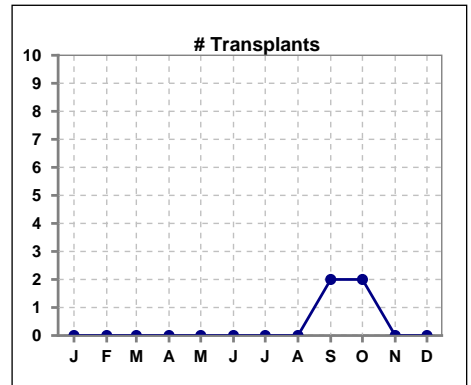
	Jan	Feb	Mar	Apr	May	Jun	Jul	Aug	Sep	Oct	Nov	Dec
# Patient	74	74	78	79	77	79	78	76	79	81	84	83
# Individual Deaths	0	2	1	0	1	2	0	0	1	3	1	3



	Jan	Feb	Mar	Apr	May	Jun	Jul	Aug	Sep	Oct	Nov	Dec
# Patient	74	74	78	79	77	79	78	76	79	81	84	83
# Missed Treatments	10	20	10	14	19	13	15	19	10	20	28	23



	Jan	Feb	Mar	Apr	May	Jun	Jul	Aug	Sep	Oct	Nov	Dec
# Patient	74	74	78	79	77	79	78	76	79	81	84	83
# Transplants	0	0	0	0	0	0	0	0	2	2	0	0



Methodology: a) All labs for 'Adequacy of Dialysis', 'Nutrition', 'Osteodystrophy', 'Anemia' and 'Diabetes' based on last value of month; b) BP's and #L processed are average of all values for month; c) Access data takes last access of month; d) Values for SGA and 'Infection Control' use most recent result.