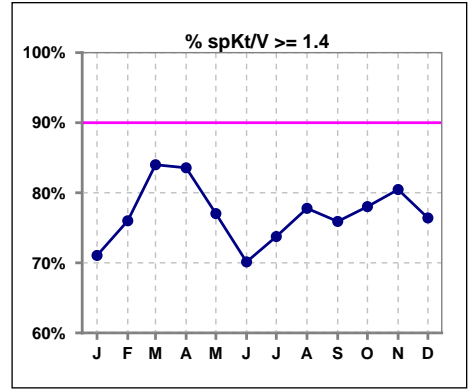
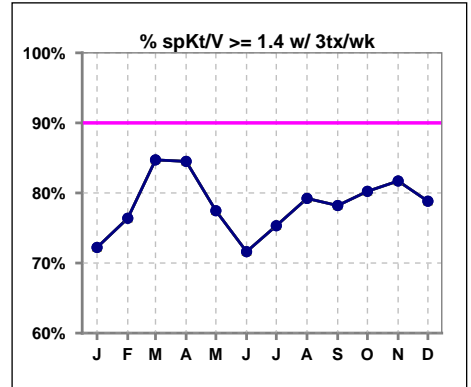


I. ADEQUACY OF DIALYSIS

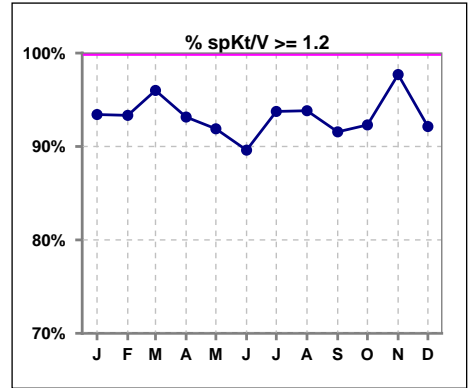
	Jan	Feb	Mar	Apr	May	Jun	Jul	Aug	Sep	Oct	Nov	Dec
# spKt/V	76	75	75	73	74	77	80	81	83	91	87	89
# spKt/V >= 1.4	54	57	63	61	57	54	59	63	63	71	70	68
Pop. Mean	1.58	1.59	1.63	1.65	1.60	1.56	1.60	1.61	1.58	1.60	1.57	1.57
Std. Deviation	0.28	0.29	0.33	0.29	0.33	0.30	0.32	0.28	0.34	0.31	0.25	0.28
% spKt/V >= 1.4	71%	76%	84%	84%	77%	70%	74%	78%	76%	78%	80%	76%



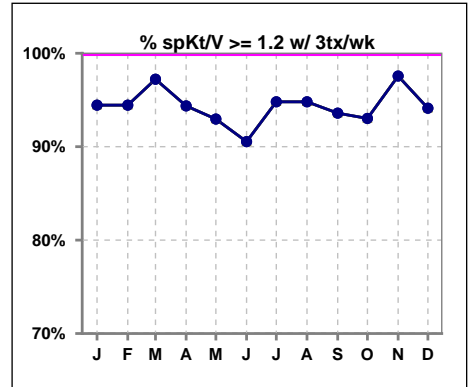
	Jan	Feb	Mar	Apr	May	Jun	Jul	Aug	Sep	Oct	Nov	Dec
# spKt/V w/ 3tx/wk	72	72	72	71	71	74	77	77	78	86	82	85
# spKt/V >= 1.4 w/3tx/wk	52	55	61	60	55	53	58	61	61	69	67	67
Pop. Mean	1.59	1.59	1.64	1.65	1.59	1.56	1.59	1.61	1.60	1.61	1.57	1.58
Std. Deviation	0.27	0.28	0.32	0.27	0.31	0.30	0.30	0.26	0.32	0.29	0.25	0.27
% >= 1.4 w/3tx/wk	72%	76%	85%	85%	77%	72%	75%	79%	78%	80%	82%	79%



	Jan	Feb	Mar	Apr	May	Jun	Jul	Aug	Sep	Oct	Nov	Dec
# spKt/V	76	75	75	73	74	77	80	81	83	91	87	89
# spKt/V >= 1.2	71	70	72	68	68	69	75	76	76	84	85	82
Pop. Mean	1.58	1.59	1.63	1.65	1.60	1.56	1.60	1.61	1.58	1.60	1.57	1.57
Std. Deviation	0.28	0.29	0.33	0.29	0.33	0.30	0.32	0.28	0.34	0.31	0.25	0.28
% spKt/V >= 1.2	93%	93%	96%	93%	92%	90%	94%	94%	92%	92%	98%	92%



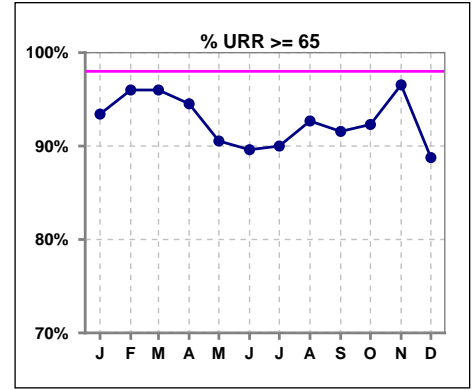
	Jan	Feb	Mar	Apr	May	Jun	Jul	Aug	Sep	Oct	Nov	Dec
# spKt/V w/ 3tx/wk	72	72	72	71	71	74	77	77	78	86	82	85
# spKt/V >= 1.2 w/3tx/wk	68	68	70	67	66	67	73	73	73	80	80	80
Pop. Mean	1.59	1.59	1.64	1.65	1.59	1.56	1.59	1.61	1.60	1.61	1.57	1.58
Std. Deviation	0.27	0.28	0.32	0.27	0.31	0.30	0.30	0.26	0.32	0.29	0.25	0.27
% >= 1.2 w/3tx/wk	94%	94%	97%	94%	93%	91%	95%	95%	94%	93%	98%	94%



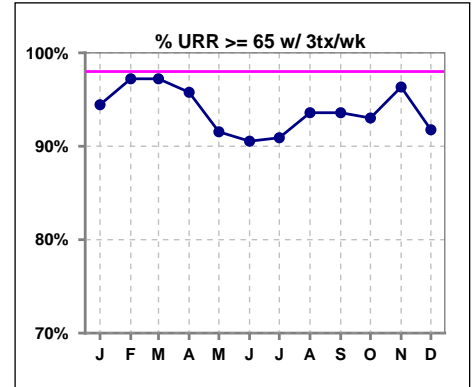
Methodology: a) All labs for 'Adequacy of Dialysis', 'Nutrition', 'Osteodystrophy', 'Anemia' and 'Diabetes' based on last value of month; b) BP's and #L processed are average of all values for month; c) Access data takes last access of month; d) Values for SGA and 'Infection Control' use most recent result.

I. ADEQUACY OF DIALYSIS - CONT.

	Jan	Feb	Mar	Apr	May	Jun	Jul	Aug	Sep	Oct	Nov	Dec
# URR	76	75	75	73	74	77	80	82	83	91	87	89
# URR >= 65	71	72	72	69	67	69	72	76	76	84	84	79
Pop. Mean	74	75	75	76	74	74	74	75	74	74	74	74
Std. Deviation	6.29	6.07	6.64	5.62	7.62	7.09	6.70	6.29	8.22	6.63	5.24	6.53
% URR >= 65	93%	96%	96%	95%	91%	90%	90%	93%	92%	92%	97%	89%



	Jan	Feb	Mar	Apr	May	Jun	Jul	Aug	Sep	Oct	Nov	Dec
# URR w/ 3tx/wk	72	72	72	71	71	74	77	78	78	86	82	85
# URR>=65 w/ 3tx/wk	68	70	70	68	65	67	70	73	73	80	79	78
Pop. Mean	75	75	75	76	74	74	74	75	74	75	74	74
Std. Deviation	6.07	6.02	6.38	5.37	7.30	7.02	6.52	5.90	7.43	6.16	5.25	5.85
% URR>=65 w/ 3tx/wk	94%	97%	97%	96%	92%	91%	91%	94%	94%	93%	96%	92%

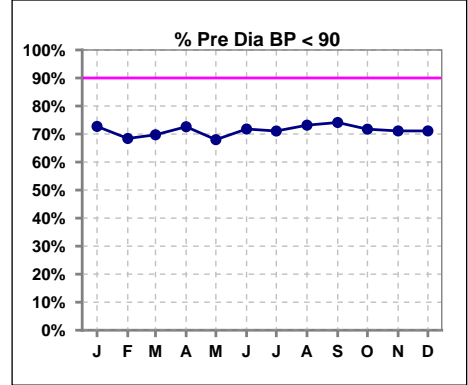


Methodology: a) All labs for 'Adequacy of Dialysis', 'Nutrition', 'Osteodystrophy', 'Anemia' and 'Diabetes' based on last value of month; b) BP's and #L processed are average of all values for month; c) Access data takes last access of month; d) Values for SGA and 'Infection Control' use most recent result.

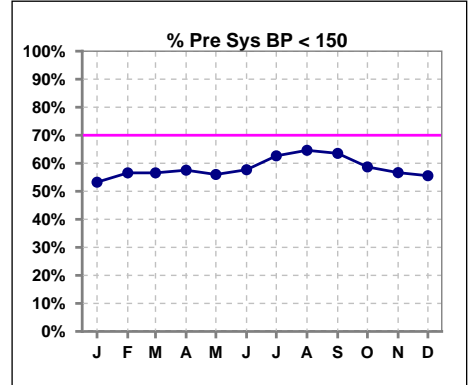
I. ADEQUACY OF DIALYSIS - CONT.

Blood Pressure Control (Pre)

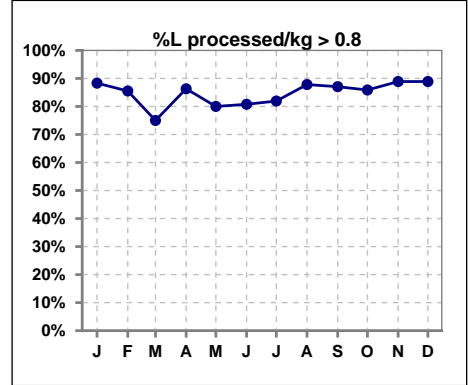
	Jan	Feb	Mar	Apr	May	Jun	Jul	Aug	Sep	Oct	Nov	Dec
# Pre Dia BP	77	76	76	73	75	78	83	82	85	92	90	90
# Pre Dia BP < 90	56	52	53	53	51	56	59	60	63	66	64	64
Pop. Mean	83	82	83	83	82	81	82	81	81	82	83	84
Std. Deviation	12.4	12.7	11.2	11.8	12.2	12.9	13.7	13.2	13.7	14.2	13.5	12.9
% Pre Dia BP < 90	73%	68%	70%	73%	68%	72%	71%	73%	74%	72%	71%	71%



	Jan	Feb	Mar	Apr	May	Jun	Jul	Aug	Sep	Oct	Nov	Dec
# Pre Sys BP	77	76	76	73	75	78	83	82	85	92	90	90
# Pre Sys BP < 150	41	43	43	42	42	45	52	53	54	54	51	50
Pop. Mean	146	146	145	145	144	144	145	143	143	144	147	148
Std. Deviation	20.2	21.2	19.9	19.5	19.6	20.9	19.7	19.9	19.0	21.2	19.4	19.3
%Pre Sys BP <150	53%	57%	57%	58%	56%	58%	63%	65%	64%	59%	57%	56%



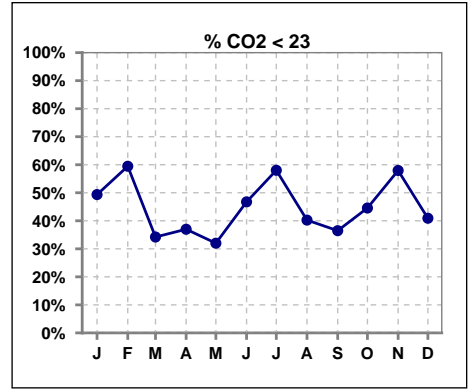
	Jan	Feb	Mar	Apr	May	Jun	Jul	Aug	Sep	Oct	Nov	Dec
# L processed/kg	77	76	76	73	75	78	83	82	85	92	90	90
# L processed/kg>0.8	68	65	57	63	60	63	68	72	74	79	80	80
Pop. Mean	1	1	1	1	1	1	1	1	1	1	1	1
Std. Deviation	0.3	0.3	0.2	0.3	0.3	0.3	0.3	0.2	0.3	0.3	0.2	0.2
% L processed/kg>0.8	88%	86%	75%	86%	80%	81%	82%	88%	87%	86%	89%	89%



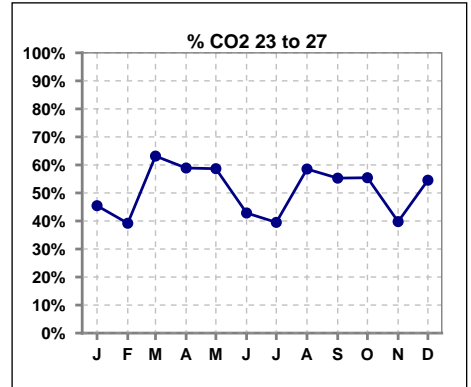
Methodology: a) All labs for 'Adequacy of Dialysis', 'Nutrition', 'Osteodystrophy', 'Anemia' and 'Diabetes' based on last value of month; b) BP's and #L processed are average of all values for month; c) Access data takes last access of month; d) Values for SGA and 'Infection Control' use most recent result.

I. ADEQUACY OF DIALYSIS - CONT.

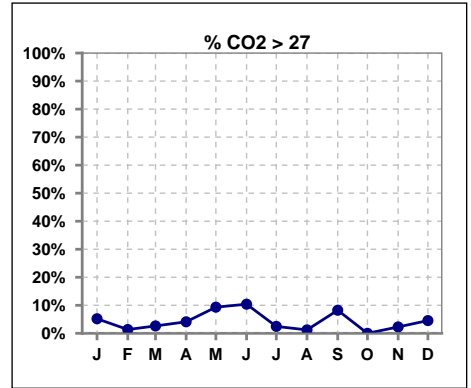
	Jan	Feb	Mar	Apr	May	Jun	Jul	Aug	Sep	Oct	Nov	Dec
# CO2	77	74	76	73	75	77	81	82	85	92	88	88
# CO2 < 23	38	44	26	27	24	36	47	33	31	41	51	36
Pop. Mean	23	22	24	23	24	23	22	23	23	23	22	23
Std. Deviation	3.00	3.45	3.51	3.59	3.28	3.86	3.56	2.97	3.33	2.33	2.65	2.77
% CO2 < 23	49%	59%	34%	37%	32%	47%	58%	40%	36%	45%	58%	41%



	Jan	Feb	Mar	Apr	May	Jun	Jul	Aug	Sep	Oct	Nov	Dec
# CO2	77	74	76	73	75	77	81	82	85	92	88	88
# CO2 23 to 27	35	29	48	43	44	33	32	48	47	51	35	48
Pop. Mean	23	22	24	23	24	23	22	23	23	23	22	23
Std. Deviation	3.00	3.45	3.51	3.59	3.28	3.86	3.56	2.97	3.33	2.33	2.65	2.77
% CO2 23 to 27	45%	39%	63%	59%	59%	43%	40%	59%	55%	55%	40%	55%



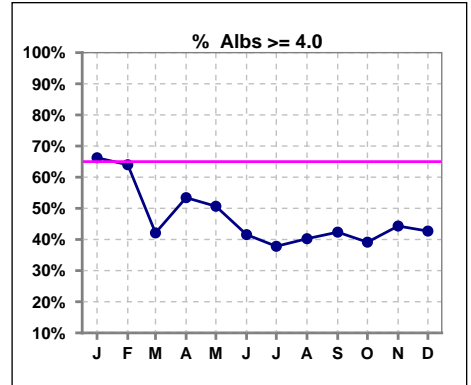
	Jan	Feb	Mar	Apr	May	Jun	Jul	Aug	Sep	Oct	Nov	Dec
# CO2	77	74	76	73	75	77	81	82	85	92	88	88
# CO2 > 27	4	1	2	3	7	8	2	1	7	0	2	4
Pop. Mean	23	22	24	23	24	23	22	23	23	23	22	23
Std. Deviation	3.00	3.45	3.51	3.59	3.28	3.86	3.56	2.97	3.33	2.33	2.65	2.77
% CO2 > 27	5%	1%	3%	4%	9%	10%	2%	1%	8%	0%	2%	5%



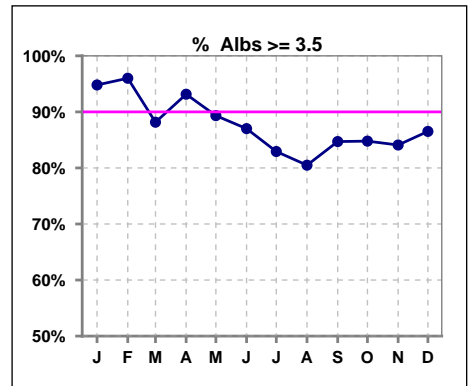
*Albumin values use BCG method - as of July 2001

II. NUTRITION

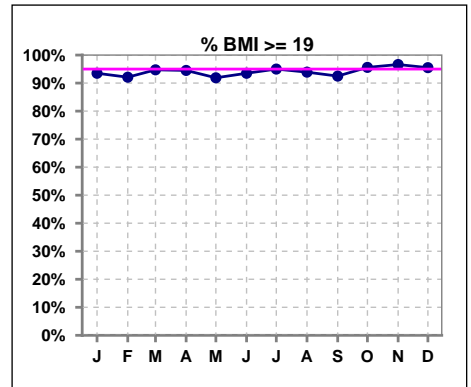
	Jan	Feb	Mar	Apr	May	Jun	Jul	Aug	Sep	Oct	Nov	Dec
# Albumin	77	75	76	73	75	77	82	82	85	92	88	89
# Albumin >= 4.0	51	48	32	39	38	32	31	33	36	36	39	38
Pop. Mean	4.1	4.1	3.9	3.9	3.9	3.8	3.8	3.8	3.9	3.8	3.8	3.8
Std. Deviation	0.32	0.38	0.40	0.39	0.42	0.42	0.42	0.44	0.40	0.41	0.42	0.38
% Alb >= 4.0	66%	64%	42%	53%	51%	42%	38%	40%	42%	39%	44%	43%



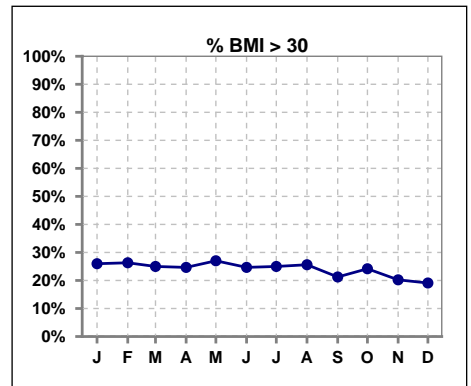
	Jan	Feb	Mar	Apr	May	Jun	Jul	Aug	Sep	Oct	Nov	Dec
# Albumin	77	75	76	73	75	77	82	82	85	92	88	89
# Albumin >= 3.5	73	72	67	68	67	67	68	66	72	78	74	77
Pop. Mean	4.1	4.1	3.9	3.9	3.9	3.8	3.8	3.8	3.9	3.8	3.8	3.8
Std. Deviation	0.32	0.38	0.40	0.39	0.42	0.42	0.42	0.44	0.40	0.41	0.42	0.38
% Alb >= 3.5	95%	96%	88%	93%	89%	87%	83%	80%	85%	85%	84%	87%



	Jan	Feb	Mar	Apr	May	Jun	Jul	Aug	Sep	Oct	Nov	Dec
# BMI	77	76	76	73	74	77	80	81	80	91	89	89
# BMI >= 19	72	70	72	69	68	72	76	77	74	87	86	85
Pop. Mean	26	27	26	26	27	27	27	27	27	27	27	27
Std. Deviation	6.5	6.4	6.2	6.4	6.7	6.5	6.6	6.5	6.3	6.8	6.1	6.1
% BMI >= 19	94%	92%	95%	95%	92%	94%	95%	94%	93%	96%	97%	96%



	Jan	Feb	Mar	Apr	May	Jun	Jul	Aug	Sep	Oct	Nov	Dec
# BMI	77	76	76	73	74	77	80	81	80	91	89	89
# BMI > 30	20	20	19	18	20	19	20	21	17	22	18	17
Pop. Mean	26	27	26	26	27	27	27	27	27	27	27	27
Std. Deviation	6.5	6.4	6.2	6.4	6.7	6.5	6.6	6.5	6.3	6.8	6.1	6.1
% BMI > 30	26%	26%	25%	25%	27%	25%	25%	26%	21%	24%	20%	19%

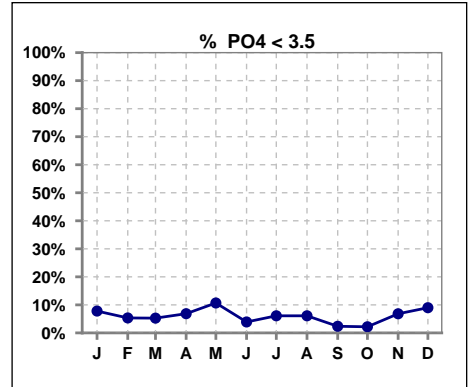


Methodology: a) All labs for 'Adequacy of Dialysis', 'Nutrition', 'Osteodystrophy', 'Anemia' and 'Diabetes' based on last value of month; b) BP's and #L processed are average of all values for month; c) Access data takes last access of month; d) Values for SGA and 'Infection Control' use most recent result.

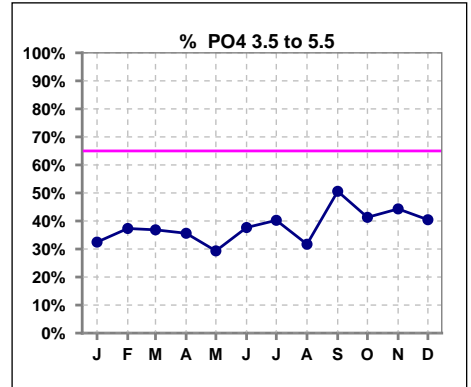
Lab methodology for PTH changed January 2012

III. OSTEODYSTROPHY

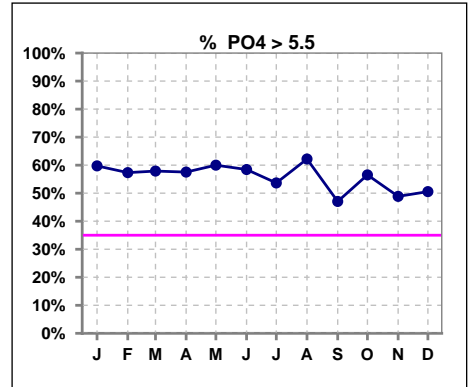
	Jan	Feb	Mar	Apr	May	Jun	Jul	Aug	Sep	Oct	Nov	Dec
# PO4	77	75	76	73	75	77	82	82	85	92	88	89
# PO4 < 3.5	6	4	4	5	8	3	5	5	2	2	6	8
Pop. Mean	6.3	5.9	6.0	5.8	6.1	6.1	6.1	6.0	5.8	6.1	5.8	6.0
Std. Deviation	2.00	1.79	1.70	1.68	1.98	1.71	2.03	1.84	1.60	1.84	1.78	2.10
% PO4 < 3.5	8%	5%	5%	7%	11%	4%	6%	6%	2%	2%	7%	9%



	Jan	Feb	Mar	Apr	May	Jun	Jul	Aug	Sep	Oct	Nov	Dec
# PO4	77	75	76	73	75	77	82	82	85	92	88	89
# PO4 3.5 to 5.5	25	28	28	26	22	29	33	26	43	38	39	36
Pop. Mean	6.3	5.9	6.0	5.8	6.1	6.1	6.1	6.0	5.8	6.1	5.8	6.0
Std. Deviation	2.00	1.79	1.70	1.68	1.98	1.71	2.03	1.84	1.60	1.84	1.78	2.10
% PO4 3.5 to 5.5	32%	37%	37%	36%	29%	38%	40%	32%	51%	41%	44%	40%



	Jan	Feb	Mar	Apr	May	Jun	Jul	Aug	Sep	Oct	Nov	Dec
# PO4	77	75	76	73	75	77	82	82	85	92	88	89
# PO4 > 5.5	46	43	44	42	45	45	44	51	40	52	43	45
Pop. Mean	6.3	5.9	6.0	5.8	6.1	6.1	6.1	6.0	5.8	6.1	5.8	6.0
Std. Deviation	2.00	1.79	1.70	1.68	1.98	1.71	2.03	1.84	1.60	1.84	1.78	2.10
% PO4 > 5.5	60%	57%	58%	58%	60%	58%	54%	62%	47%	57%	49%	51%

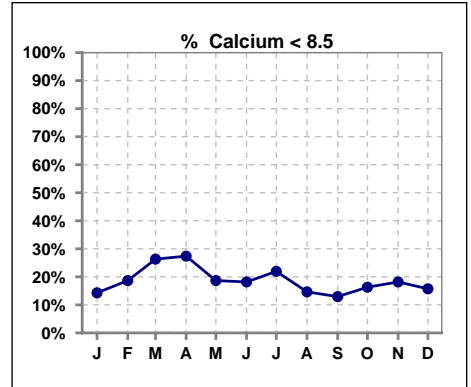


Methodology: a) All labs for 'Adequacy of Dialysis', 'Nutrition', 'Osteodystrophy', 'Anemia' and 'Diabetes' based on last value of month; b) BP's and #L processed are average of all values for month; c) Access data takes last access of month; d) Values for SGA and 'Infection Control' use most recent result.

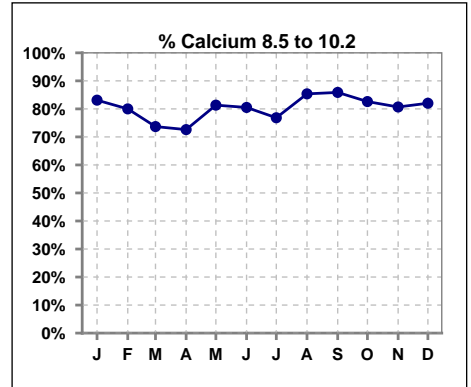
Lab methodology for PTH changed January 2012

III. OSTEODYSTROPHY - CONT.

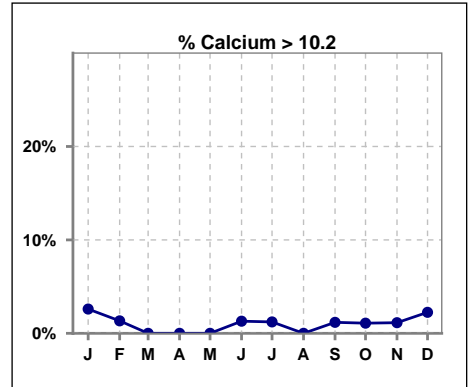
	Jan	Feb	Mar	Apr	May	Jun	Jul	Aug	Sep	Oct	Nov	Dec
# Calcium	77	75	76	73	75	77	82	82	85	92	88	89
# Calcium < 8.5	11	14	20	20	14	14	18	12	11	15	16	14
Pop. Mean	9.1	9.0	8.8	8.9	9.0	9.1	8.9	9.0	9.1	9.1	9.0	9.1
Std. Deviation	0.68	0.70	0.74	0.68	0.69	0.64	0.68	0.64	0.61	0.71	0.72	0.73
% Calcium < 8.5	14%	19%	26%	27%	19%	18%	22%	15%	13%	16%	18%	16%



	Jan	Feb	Mar	Apr	May	Jun	Jul	Aug	Sep	Oct	Nov	Dec
# Calcium	77	75	76	73	75	77	82	82	85	92	88	89
# Calcium 8.5 to 10.2	64	60	56	53	61	62	63	70	73	76	71	73
Pop. Mean	9.1	9.0	8.8	8.9	9.0	9.1	8.9	9.0	9.1	9.1	9.0	9.1
Std. Deviation	0.68	0.70	0.74	0.68	0.69	0.64	0.68	0.64	0.61	0.71	0.72	0.73
% Calcium 8.5 to 10.2	83%	80%	74%	73%	81%	81%	77%	85%	86%	83%	81%	82%



	Jan	Feb	Mar	Apr	May	Jun	Jul	Aug	Sep	Oct	Nov	Dec
# Calcium	77	75	76	73	75	77	82	82	85	92	88	89
# Calcium > 10.2	2	1	0	0	0	1	1	0	1	1	1	2
Pop. Mean	9.1	9.0	8.8	8.9	9.0	9.1	8.9	9.0	9.1	9.1	9.0	9.1
Std. Deviation	0.68	0.70	0.74	0.68	0.69	0.64	0.68	0.64	0.61	0.71	0.72	0.73
% Calcium > 10.2	3%	1%	0%	0%	0%	1%	1%	0%	1%	1%	1%	2%

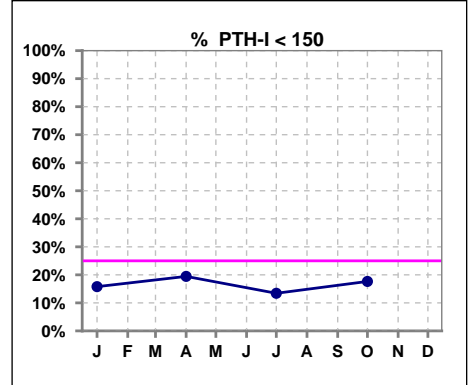


Methodology: a) All labs for 'Adequacy of Dialysis', 'Nutrition', 'Osteodystrophy', 'Anemia' and 'Diabetes' based on last value of month; b) BP's and #L processed are average of all values for month; c) Access data takes last access of month; d) Values for SGA and 'Infection Control' use most recent result.

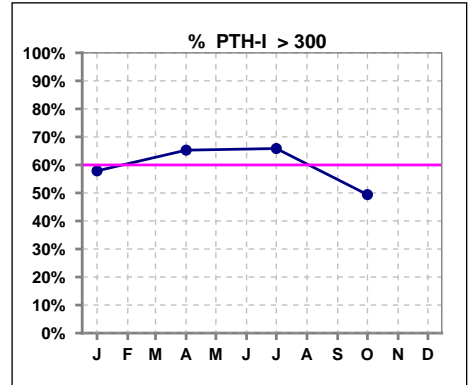
Lab methodology for PTH changed January 2012

III. OSTEODYSTROPHY - CONT.

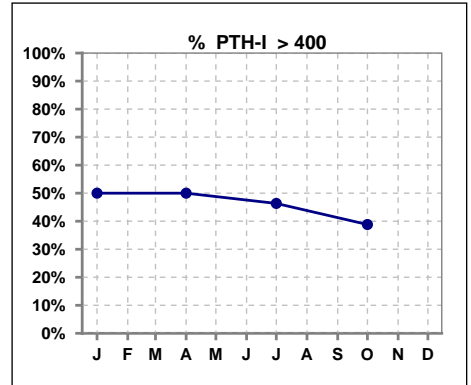
	Jan	Feb	Mar	Apr	May	Jun	Jul	Aug	Sep	Oct	Nov	Dec
# PTH-I	76			72			82			85		
# PTH-I < 150	12			14			11			15		
Pop. Mean	485			539			476			407		
Std. Deviation	465			575			439			341		
% PTH-I < 150	16%			19%			13%			18%		



	Jan	Feb	Mar	Apr	May	Jun	Jul	Aug	Sep	Oct	Nov	Dec
# PTH-I	76			72			82			85		
# PTH-I > 300	44			47			54			42		
Pop. Mean	485			539			476			407		
Std. Deviation	465			575			439			341		
% PTH-I > 300	58%			65%			66%			49%		



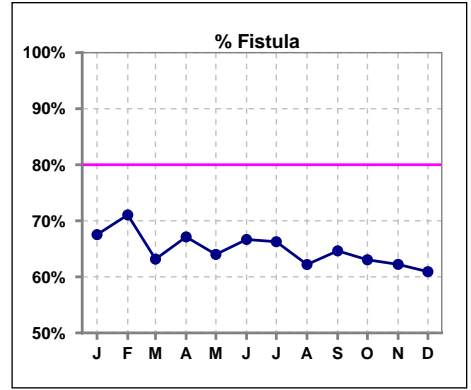
	Jan	Feb	Mar	Apr	May	Jun	Jul	Aug	Sep	Oct	Nov	Dec
# PTH-I	76			72			82			85		
# PTH-I > 400	38			36			38			33		
Pop. Mean	485			539			476			407		
Std. Deviation	465			575			439			341		
% PTH-I > 400	50%			50%			46%			39%		



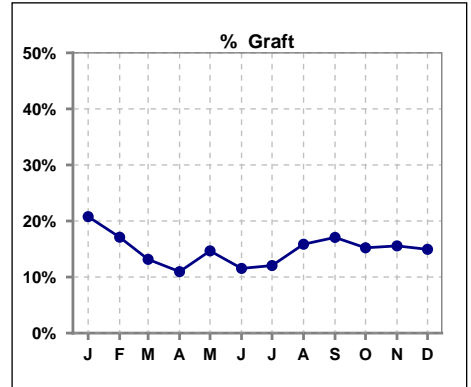
Methodology: a) All labs for 'Adequacy of Dialysis', 'Nutrition', 'Osteodystrophy', 'Anemia' and 'Diabetes' based on last value of month; b) BP's and #L processed are average of all values for month; c) Access data takes last access of month; d) Values for SGA and 'Infection Control' use most recent result.

IV. ACCESS

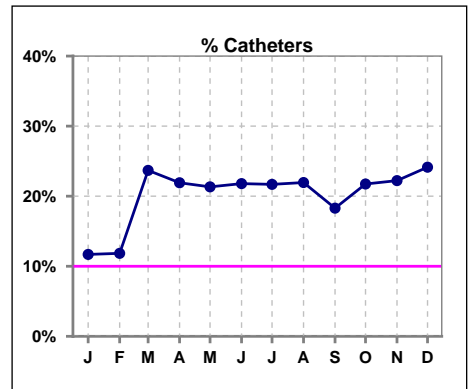
	Jan	Feb	Mar	Apr	May	Jun	Jul	Aug	Sep	Oct	Nov	Dec
# Access	77	76	76	73	75	78	83	82	82	92	90	87
# Fistula	52	54	48	49	48	52	55	51	53	58	56	53
% Fistula	68%	71%	63%	67%	64%	67%	66%	62%	65%	63%	62%	61%



	Jan	Feb	Mar	Apr	May	Jun	Jul	Aug	Sep	Oct	Nov	Dec
# Access	77	76	76	73	75	78	83	82	82	92	90	87
# Graft	16	13	10	8	11	9	10	13	14	14	14	13
% Graft	21%	17%	13%	11%	15%	12%	12%	16%	17%	15%	16%	15%



	Jan	Feb	Mar	Apr	May	Jun	Jul	Aug	Sep	Oct	Nov	Dec
# Access	77	76	76	73	75	78	83	82	82	92	90	87
# Catheters	9	9	18	16	16	17	18	18	15	20	20	21
% Catheters	12%	12%	24%	22%	21%	22%	22%	22%	18%	22%	22%	24%

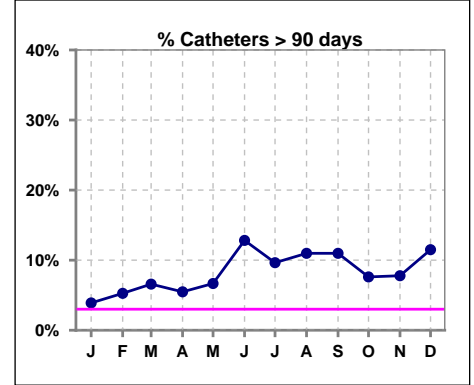


IV. ACCESS - CONT.

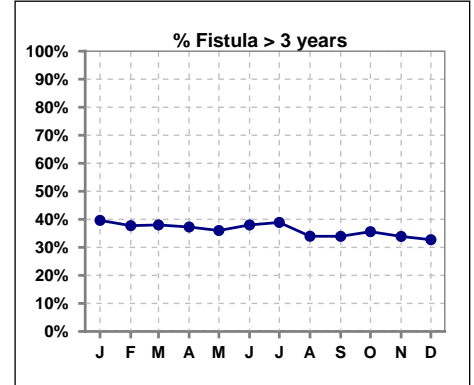
Catheters > 90 days

	Jan	Feb	Mar	Apr	May	Jun	Jul	Aug	Sep	Oct	Nov	Dec
# Access	77	76	76	73	75	78	83	82	82	92	90	87
# Catheters	3	4	5	4	5	10	8	9	9	7	7	10
% Catheters	4%	5%	7%	5%	7%	13%	10%	11%	11%	8%	8%	11%

Definition: Catheter in use on last treatment of the month



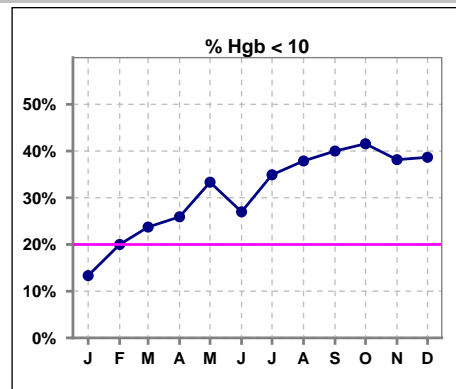
	Jan	Feb	Mar	Apr	May	Jun	Jul	Aug	Sep	Oct	Nov	Dec
# Fistula	53	53	50	51	50	50	54	53	56	59	59	55
# Fistula > 3 yrs	21	20	19	19	18	19	21	18	19	21	20	18
% Fistula > 3 yrs	40%	38%	38%	37%	36%	38%	39%	34%	34%	36%	34%	33%



V. ANEMIA

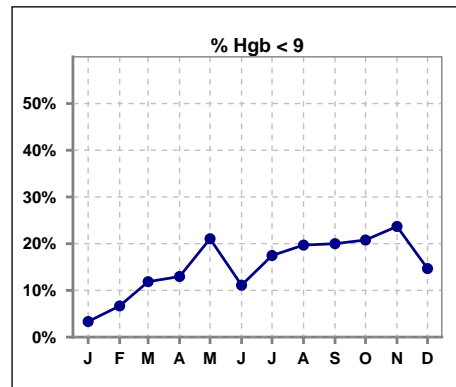
	Jan	Feb	Mar	Apr	May	Jun	Jul	Aug	Sep	Oct	Nov	Dec
# Hgb	60	60	59	54	57	63	63	66	70	77	76	75
# Hgb < 10	8	12	14	14	19	17	22	25	28	32	29	29
Pop. Mean	10.8	10.8	10.4	10.4	10.2	10.5	10.2	10.2	10.0	10.0	10.0	10.1
Std. Deviation	0.9	1.2	1.2	1.3	1.5	1.3	1.4	1.4	1.6	1.4	1.4	1.4
% Hgb < 10	13%	20%	24%	26%	33%	27%	35%	38%	40%	42%	38%	39%

Note: Excludes patients who received no ESA in month.



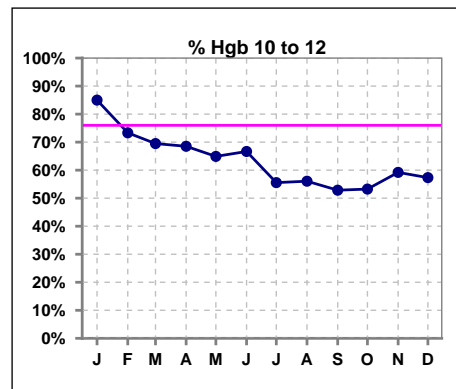
	Jan	Feb	Mar	Apr	May	Jun	Jul	Aug	Sep	Oct	Nov	Dec
# Hgb	60	60	59	54	57	63	63	66	70	77	76	75
# Hgb < 9	2	4	7	7	12	7	11	13	14	16	18	11
Pop. Mean	10.8	10.8	10.4	10.4	10.2	10.5	10.2	10.2	10.0	10.0	10.0	10.1
Std. Deviation	0.9	1.2	1.2	1.3	1.5	1.3	1.4	1.4	1.6	1.4	1.4	1.4
% Hgb < 9	3%	7%	12%	13%	21%	11%	17%	20%	20%	21%	24%	15%

Note: Excludes patients who received no ESA in month.



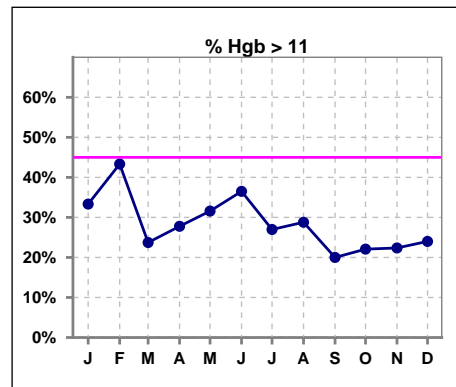
	Jan	Feb	Mar	Apr	May	Jun	Jul	Aug	Sep	Oct	Nov	Dec
# Hgb	60	60	59	54	57	63	63	66	70	77	76	75
# Hgb 10 to 12	51	44	41	37	37	42	35	37	37	41	45	43
Pop. Mean	10.8	10.8	10.4	10.4	10.2	10.5	10.2	10.2	10.0	10.0	10.0	10.1
Std. Deviation	0.9	1.2	1.2	1.3	1.5	1.3	1.4	1.4	1.6	1.4	1.4	1.4
% Hgb 10 to 12	85%	73%	69%	69%	65%	67%	56%	56%	53%	53%	59%	57%

Note: Excludes patients who received no ESA in month.



	Jan	Feb	Mar	Apr	May	Jun	Jul	Aug	Sep	Oct	Nov	Dec
# Hgb	60	60	59	54	57	63	63	66	70	77	76	75
# Hgb > 11	20	26	14	15	18	23	17	19	14	17	17	18
Pop. Mean	10.8	10.8	10.4	10.4	10.2	10.5	10.2	10.2	10.0	10.0	10.0	10.1
Std. Deviation	0.9	1.2	1.2	1.3	1.5	1.3	1.4	1.4	1.6	1.4	1.4	1.4
% Hgb > 11	33%	43%	24%	28%	32%	37%	27%	29%	20%	22%	22%	24%

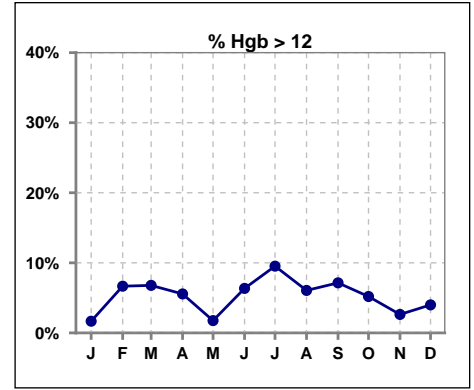
Note: Excludes patients who received no ESA in month.



V. ANEMIA - CONT.

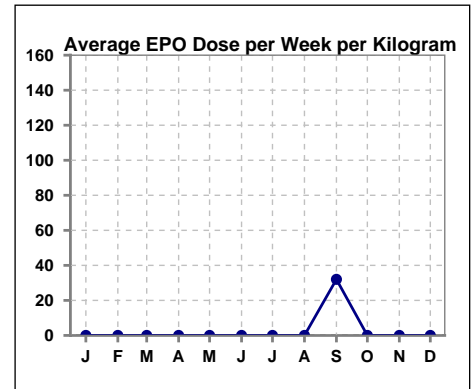
	Jan	Feb	Mar	Apr	May	Jun	Jul	Aug	Sep	Oct	Nov	Dec
# Hgb	60	60	59	54	57	63	63	66	70	77	76	75
# Hgb > 12	1	4	4	3	1	4	6	4	5	4	2	3
Pop. Mean	10.8	10.8	10.4	10.4	10.2	10.5	10.2	10.2	10.0	10.0	10.0	10.1
Std. Deviation	0.9	1.2	1.2	1.3	1.5	1.3	1.4	1.4	1.6	1.4	1.4	1.4
% Hgb > 12	2%	7%	7%	6%	2%	6%	10%	6%	7%	5%	3%	4%

Note: Excludes patients who received no ESA in month.



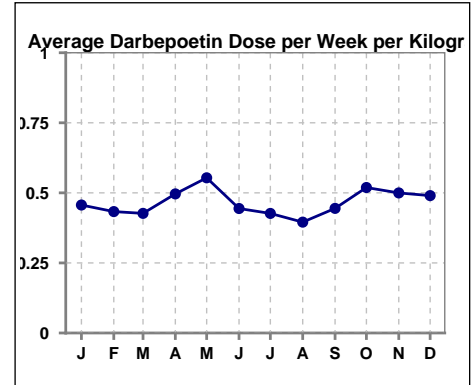
Average EPO Dose per Week per Kilogram

	Jan	Feb	Mar	Apr	May	Jun	Jul	Aug	Sep	Oct	Nov	Dec
# Average EPO	0	0	0	0	0	0	0	0	32.0	0	0	0



Average Darbeopetin Dose per Week per Kilogram

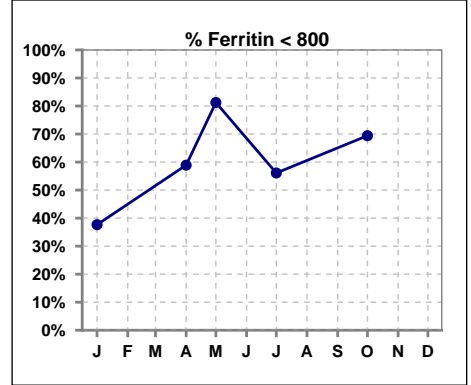
	Jan	Feb	Mar	Apr	May	Jun	Jul	Aug	Sep	Oct	Nov	Dec
# Average Darbeopetin	.5	.4	.4	.5	.6	.4	.4	.4	.4	.5	.5	.5



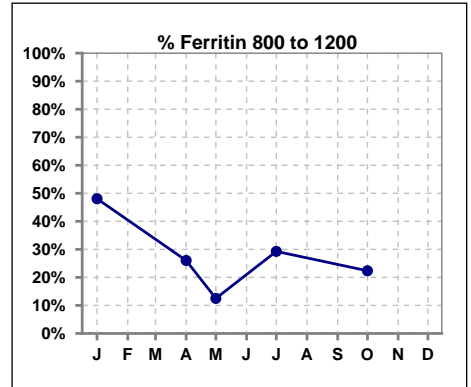
V. ANEMIA - CONT.

Iron Profile

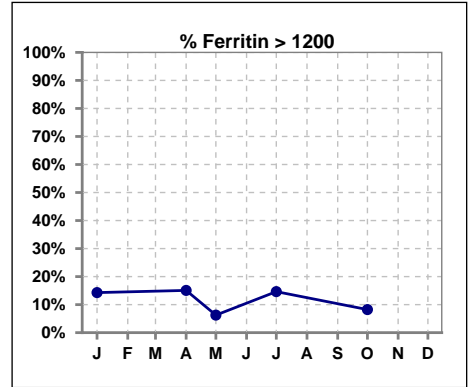
	Jan	Feb	Mar	Apr	May	Jun	Jul	Aug	Sep	Oct	Nov	Dec
# Ferritin	77			73	16		82			85		
# Ferritin < 800	29			43	13		46			59		
Pop. Mean	867			863	554		863			783		
Std. Deviation	376			1027	305		871			959		
% Ferritin < 800	38%			59%	81%		56%			69%		



	Jan	Feb	Mar	Apr	May	Jun	Jul	Aug	Sep	Oct	Nov	Dec
# Ferritin	77			73	16		82			85		
# Ferritin 800 to 1200	37			19	2		24			19		
Pop. Mean	867			863	554		863			783		
Std. Deviation	376			1027	305		871			959		
% Ferritin 800 to 1200	48%			26%	13%		29%			22%		

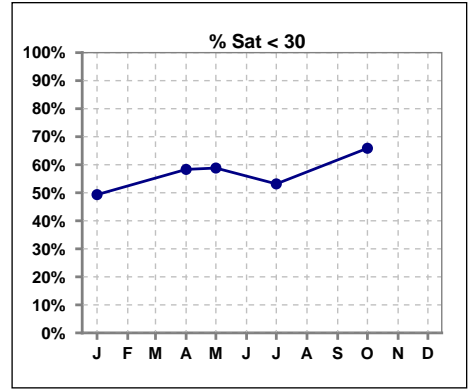


	Jan	Feb	Mar	Apr	May	Jun	Jul	Aug	Sep	Oct	Nov	Dec
# Ferritin	77			73	16		82			85		
# Ferritin > 1200	11			11	1		12			7		
Pop. Mean	867			863	554		863			783		
Std. Deviation	376			1027	305		871			959		
% Ferritin > 1200	14%			15%	6%		15%			8%		

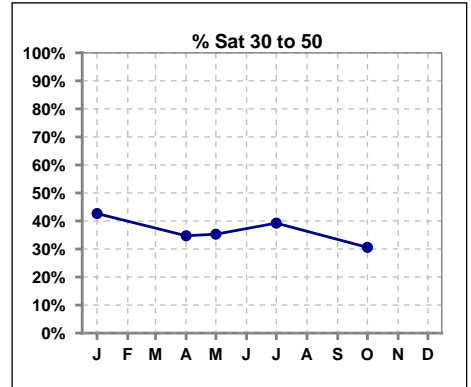


V. ANEMIA - CONT.

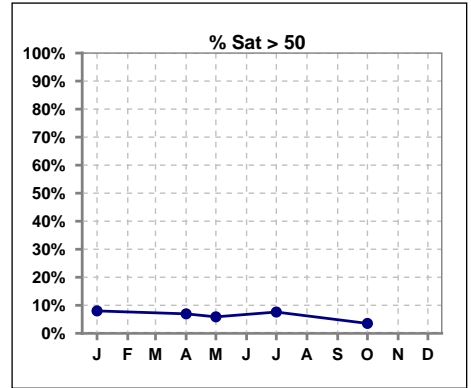
	Jan	Feb	Mar	Apr	May	Jun	Jul	Aug	Sep	Oct	Nov	Dec
# % Sat	75			72	17		79			85		
# % Sat < 30	37			42	10		42			56		
Pop. Mean	31			30	30		30			26		
Std. Deviation	13			14	13		13			13		
%% Sat < 30	49%			58%	59%		53%			66%		



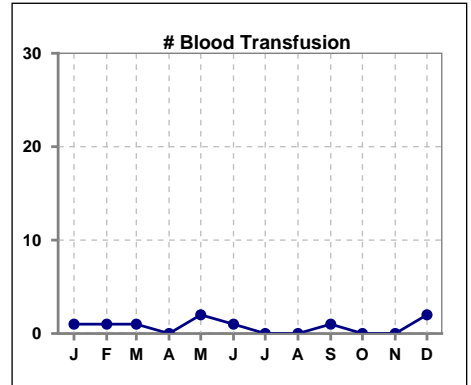
	Jan	Feb	Mar	Apr	May	Jun	Jul	Aug	Sep	Oct	Nov	Dec
# % Sat	75			72	17		79			85		
# % Sat 30 to 50	32			25	6		31			26		
Pop. Mean	31			30	30		30			26		
Std. Deviation	13			14	13		13			13		
%% Sat 30 to 50	43%			35%	35%		39%			31%		



	Jan	Feb	Mar	Apr	May	Jun	Jul	Aug	Sep	Oct	Nov	Dec
# % Sat	75			72	17		79			85		
# % Sat > 50	6			5	1		6			3		
Pop. Mean	31			30	30		30			26		
Std. Deviation	13			14	13		13			13		
%% Sat > 50	8%			7%	6%		8%			4%		



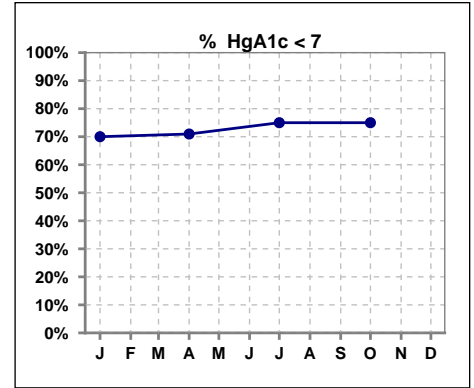
	Jan	Feb	Mar	Apr	May	Jun	Jul	Aug	Sep	Oct	Nov	Dec
# Patient	78	77	77	74	76	78	83	85	85	92	91	90
# Blood Transfusion	1	1	1	0	2	1	0	0	1	0	0	2



Methodology: a) All labs for 'Adequacy of Dialysis', 'Nutrition', 'Osteodystrophy', 'Anemia' and 'Diabetes' based on last value of month; b) BP's and #L processed are average of all values for month; c) Access data takes last access of month; d) Values for SGA and 'Infection Control' use most recent result.

VI. Diabetes

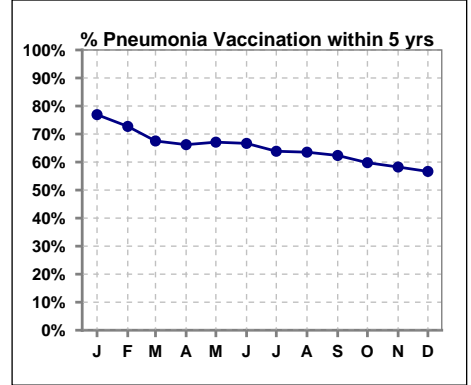
	Jan	Feb	Mar	Apr	May	Jun	Jul	Aug	Sep	Oct	Nov	Dec
# HgA1c	30			31			32			8		
# HgA1c < 7	21			22			24			6		
Pop. Mean	6.4			6.3			6.3			6.3		
Std. Deviation	1.28			1.33			1.23			1.21		
% HgA1c < 7	70%			71%			75%			75%		



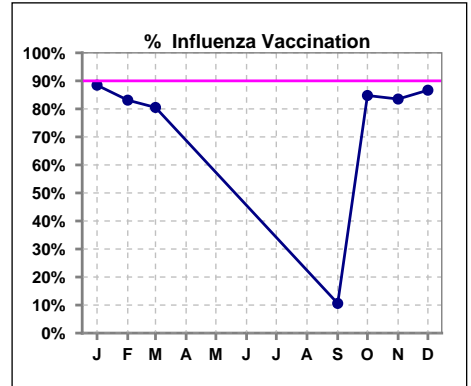
VII. Infection Control

Pneumonia vaccination within the past five years

	Jan	Feb	Mar	Apr	May	Jun	Jul	Aug	Sep	Oct	Nov	Dec
# Patient	78	77	77	74	76	78	83	85	85	92	91	90
# Pneumonia	60	56	52	49	51	52	53	54	53	55	53	51
% Pneumonia	77%	73%	68%	66%	67%	67%	64%	64%	62%	60%	58%	57%



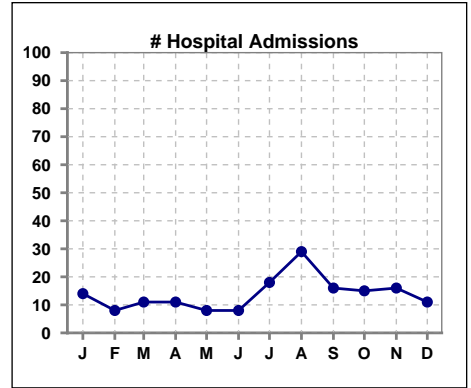
	Jan	Feb	Mar	Apr	May	Jun	Jul	Aug	Sep	Oct	Nov	Dec
# Patient	78	77	77						85	92	91	90
# Influenza	69	64	62						9	78	76	78
% Influenza	88%	83%	81%						11%	85%	84%	87%



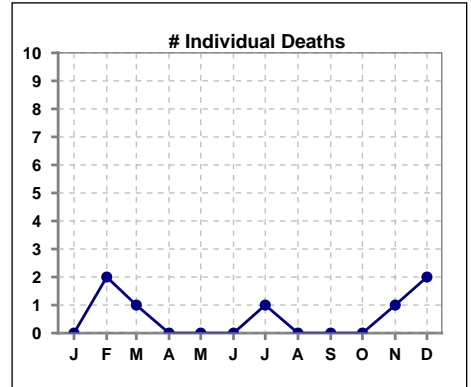
Methodology: a) All labs for 'Adequacy of Dialysis', 'Nutrition', 'Osteodystrophy', 'Anemia' and 'Diabetes' based on last value of month; b) BP's and #L processed are average of all values for month; c) Access data takes last access of month; d) Values for SGA and 'Infection Control' use most recent result.

VIII. Outcome measures

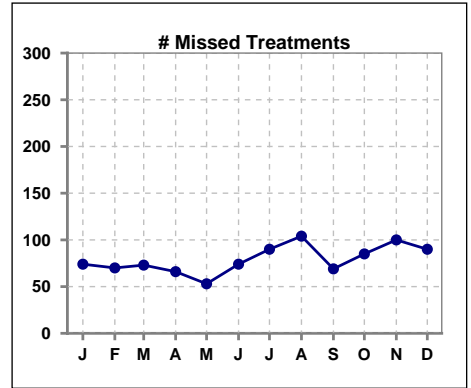
	Jan	Feb	Mar	Apr	May	Jun	Jul	Aug	Sep	Oct	Nov	Dec
# Patient	78	77	77	74	76	78	83	85	85	92	91	90
# Hospital Admissions	14	8	11	11	8	8	18	29	16	15	16	11



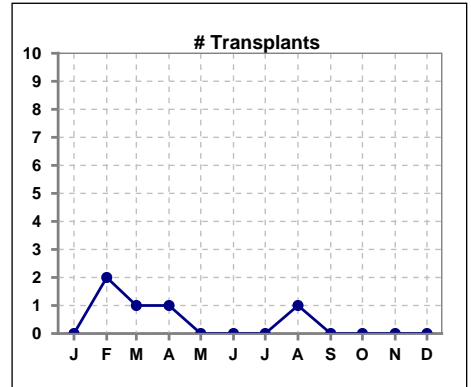
	Jan	Feb	Mar	Apr	May	Jun	Jul	Aug	Sep	Oct	Nov	Dec
# Patient	78	77	77	74	76	78	83	85	85	92	91	90
# Individual Deaths	0	2	1	0	0	0	1	0	0	0	1	2



	Jan	Feb	Mar	Apr	May	Jun	Jul	Aug	Sep	Oct	Nov	Dec
# Patient	78	77	77	74	76	78	83	85	85	92	91	90
# Missed Treatments	74	70	73	66	53	74	90	104	69	85	100	90



	Jan	Feb	Mar	Apr	May	Jun	Jul	Aug	Sep	Oct	Nov	Dec
# Patient	78	77	77	74	76	78	83	85	85	92	91	90
# Transplants	0	2	1	1	0	0	0	1	0	0	0	0



Methodology: a) All labs for 'Adequacy of Dialysis', 'Nutrition', 'Osteodystrophy', 'Anemia' and 'Diabetes' based on last value of month; b) BP's and #L processed are average of all values for month; c) Access data takes last access of month; d) Values for SGA and 'Infection Control' use most recent result.