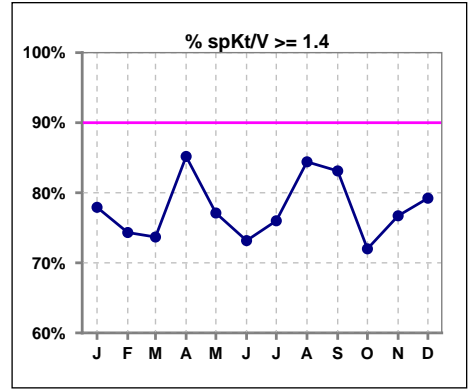
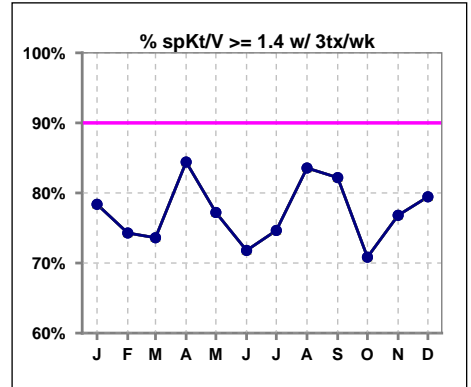


I. ADEQUACY OF DIALYSIS

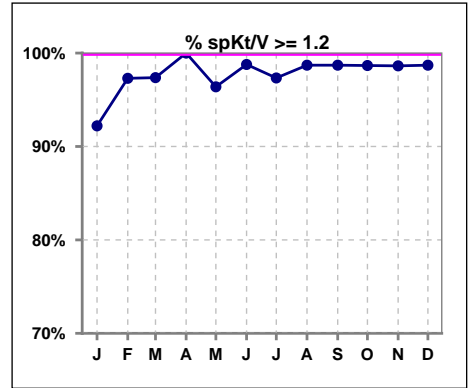
	Jan	Feb	Mar	Apr	May	Jun	Jul	Aug	Sep	Oct	Nov	Dec
# spKt/V	77	74	76	81	83	82	75	77	77	75	73	77
# spKt/V >= 1.4	60	55	56	69	64	60	57	65	64	54	56	61
Pop. Mean	1.59	1.58	1.58	1.67	1.63	1.62	1.62	1.66	1.64	1.59	1.62	1.64
Std. Deviation	0.39	0.31	0.28	0.29	0.34	0.30	0.33	0.29	0.29	0.29	0.34	0.34
% spKt/V >= 1.4	78%	74%	74%	85%	77%	73%	76%	84%	83%	72%	77%	79%



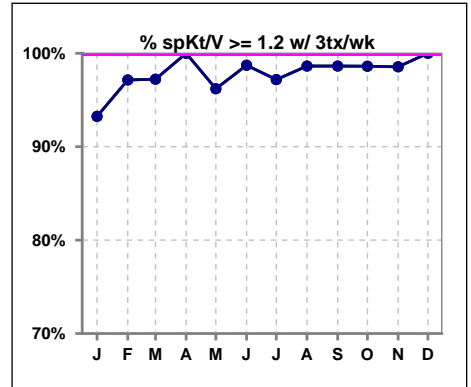
	Jan	Feb	Mar	Apr	May	Jun	Jul	Aug	Sep	Oct	Nov	Dec
# spKt/V w/ 3tx/wk	74	70	72	77	79	78	71	73	73	72	69	73
# spKt/V >= 1.4 w/3tx/wk	58	52	53	65	61	56	53	61	60	51	53	58
Pop. Mean	1.59	1.57	1.57	1.65	1.62	1.61	1.60	1.65	1.62	1.59	1.62	1.62
Std. Deviation	0.35	0.31	0.27	0.29	0.33	0.29	0.33	0.29	0.26	0.30	0.34	0.30
% >= 1.4 w/3tx/wk	78%	74%	74%	84%	77%	72%	75%	84%	82%	71%	77%	79%



	Jan	Feb	Mar	Apr	May	Jun	Jul	Aug	Sep	Oct	Nov	Dec
# spKt/V	77	74	76	81	83	82	75	77	77	75	73	77
# spKt/V >= 1.2	71	72	74	81	80	81	73	76	76	74	72	76
Pop. Mean	1.59	1.58	1.58	1.67	1.63	1.62	1.62	1.66	1.64	1.59	1.62	1.64
Std. Deviation	0.39	0.31	0.28	0.29	0.34	0.30	0.33	0.29	0.29	0.29	0.34	0.34
% spKt/V >= 1.2	92%	97%	97%	100%	96%	99%	97%	99%	99%	99%	99%	99%



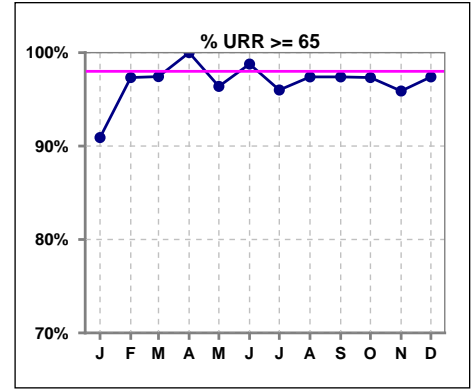
	Jan	Feb	Mar	Apr	May	Jun	Jul	Aug	Sep	Oct	Nov	Dec
# spKt/V w/ 3tx/wk	74	70	72	77	79	78	71	73	73	72	69	73
# spKt/V >= 1.2 w/3tx/wk	69	68	70	77	76	77	69	72	72	71	68	73
Pop. Mean	1.59	1.57	1.57	1.65	1.62	1.61	1.60	1.65	1.62	1.59	1.62	1.62
Std. Deviation	0.35	0.31	0.27	0.29	0.33	0.29	0.33	0.29	0.26	0.30	0.34	0.30
% >= 1.2 w/3tx/wk	93%	97%	97%	100%	96%	99%	97%	99%	99%	99%	99%	100%



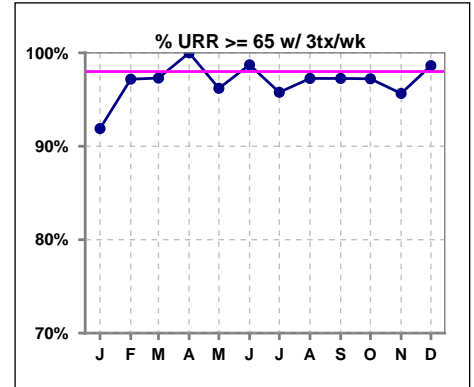
Methodology: a) All labs for 'Adequacy of Dialysis', 'Nutrition', 'Osteodystrophy', 'Anemia' and 'Diabetes' based on last value of month; b) BP's and #L processed are average of all values for month; c) Access data takes last access of month; d) Values for SGA and 'Infection Control' use most recent result.

I. ADEQUACY OF DIALYSIS - CONT.

	Jan	Feb	Mar	Apr	May	Jun	Jul	Aug	Sep	Oct	Nov	Dec
# URR	77	75	78	81	83	82	75	77	77	75	73	77
# URR >= 65	70	73	76	81	80	81	72	75	75	73	70	75
Pop. Mean	74	74	74	76	75	75	75	76	76	74	75	75
Std. Deviation	9.17	6.49	6.10	5.30	6.82	5.58	6.81	5.61	5.28	5.58	5.81	5.81
% URR >= 65	91%	97%	97%	100%	96%	99%	96%	97%	97%	97%	96%	97%



	Jan	Feb	Mar	Apr	May	Jun	Jul	Aug	Sep	Oct	Nov	Dec
# URR w/ 3tx/wk	74	71	74	77	79	78	71	73	73	72	69	73
# URR>=65 w/ 3tx/wk	68	69	72	77	76	77	68	71	71	70	66	72
Pop. Mean	74	74	74	76	75	75	75	76	75	74	75	75
Std. Deviation	8.17	6.49	6.09	5.22	6.80	5.49	6.76	5.62	4.98	5.65	5.85	5.43
% URR>=65 w/ 3tx/wk	92%	97%	97%	100%	96%	99%	96%	97%	97%	97%	96%	99%

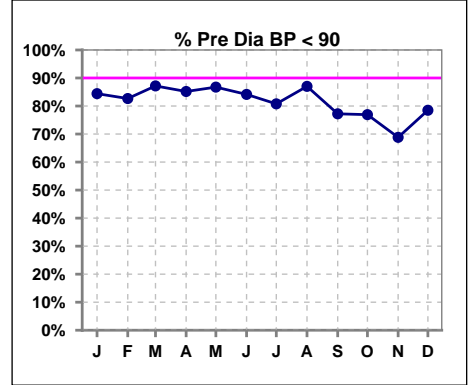


Methodology: a) All labs for 'Adequacy of Dialysis', 'Nutrition', 'Osteodystrophy', 'Anemia' and 'Diabetes' based on last value of month; b) BP's and #L processed are average of all values for month; c) Access data takes last access of month; d) Values for SGA and 'Infection Control' use most recent result.

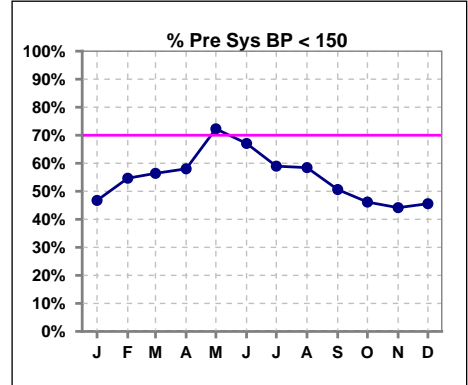
I. ADEQUACY OF DIALYSIS - CONT.

Blood Pressure Control (Pre)

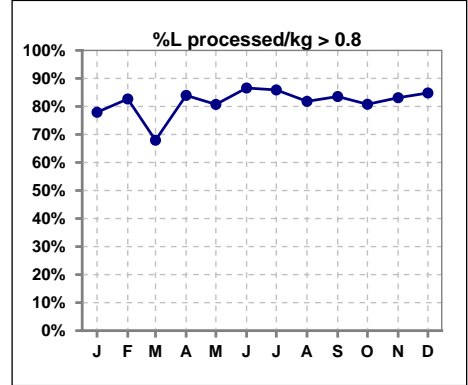
	Jan	Feb	Mar	Apr	May	Jun	Jul	Aug	Sep	Oct	Nov	Dec
# Pre Dia BP	77	75	78	81	83	82	78	77	79	78	77	79
# Pre Dia BP < 90	65	62	68	69	72	69	63	67	61	60	53	62
Pop. Mean	78	77	77	78	76	76	77	77	79	82	82	80
Std. Deviation	12.5	12.6	12.0	12.5	11.6	12.2	11.9	11.5	12.7	13.3	13.2	12.5
% Pre Dia BP < 90	84%	83%	87%	85%	87%	84%	81%	87%	77%	77%	69%	78%



	Jan	Feb	Mar	Apr	May	Jun	Jul	Aug	Sep	Oct	Nov	Dec
# Pre Sys BP	77	75	78	81	83	82	78	77	79	78	77	79
# Pre Sys BP < 150	36	41	44	47	60	55	46	45	40	36	34	36
Pop. Mean	149	147	147	145	142	143	144	146	149	154	154	151
Std. Deviation	20.0	21.1	20.0	18.9	18.9	19.2	18.8	17.2	17.2	18.7	18.4	17.8
%Pre Sys BP <150	47%	55%	56%	58%	72%	67%	59%	58%	51%	46%	44%	46%



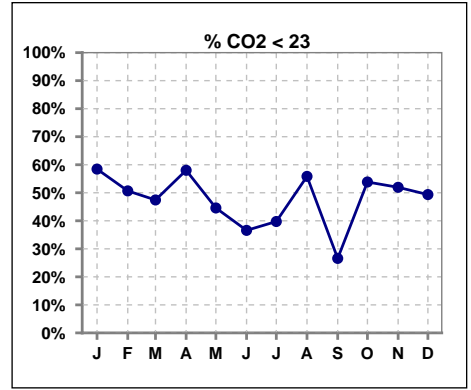
	Jan	Feb	Mar	Apr	May	Jun	Jul	Aug	Sep	Oct	Nov	Dec
# L processed/kg	77	75	78	81	83	82	78	77	79	78	77	79
# L processed/kg>0.8	60	62	53	68	67	71	67	63	66	63	64	67
Pop. Mean	1	1	1	1	1	1	1	1	1	1	1	1
Std. Deviation	0.3	0.3	0.2	0.3	0.3	0.2	0.2	0.2	0.2	0.3	0.2	0.3
% L processed/kg>0.8	78%	83%	68%	84%	81%	87%	86%	82%	84%	81%	83%	85%



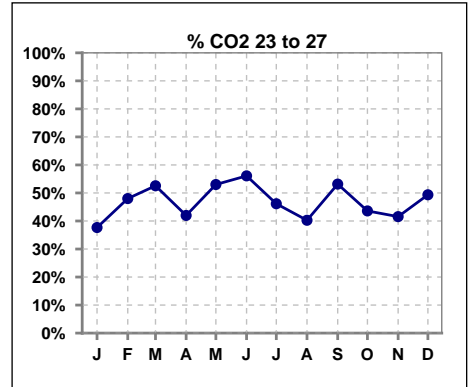
Methodology: a) All labs for 'Adequacy of Dialysis', 'Nutrition', 'Osteodystrophy', 'Anemia' and 'Diabetes' based on last value of month; b) BP's and #L processed are average of all values for month; c) Access data takes last access of month; d) Values for SGA and 'Infection Control' use most recent result.

I. ADEQUACY OF DIALYSIS - CONT.

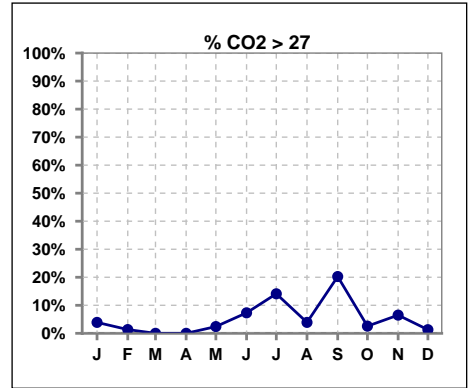
	Jan	Feb	Mar	Apr	May	Jun	Jul	Aug	Sep	Oct	Nov	Dec
# CO2	77	75	78	81	83	82	78	77	79	78	77	77
# CO2 < 23	45	38	37	47	37	30	31	43	21	42	40	38
Pop. Mean	22	22	23	22	23	24	23	22	24	22	22	22
Std. Deviation	3.10	2.69	2.44	2.89	2.88	3.20	4.29	3.19	3.76	2.73	3.10	2.79
% CO2 < 23	58%	51%	47%	58%	45%	37%	40%	56%	27%	54%	52%	49%



	Jan	Feb	Mar	Apr	May	Jun	Jul	Aug	Sep	Oct	Nov	Dec
# CO2	77	75	78	81	83	82	78	77	79	78	77	77
# CO2 23 to 27	29	36	41	34	44	46	36	31	42	34	32	38
Pop. Mean	22	22	23	22	23	24	23	22	24	22	22	22
Std. Deviation	3.10	2.69	2.44	2.89	2.88	3.20	4.29	3.19	3.76	2.73	3.10	2.79
% CO2 23 to 27	38%	48%	53%	42%	53%	56%	46%	40%	53%	44%	42%	49%



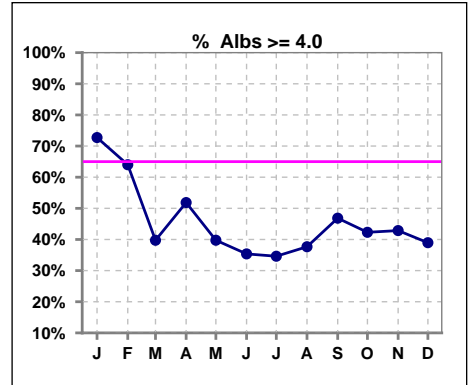
	Jan	Feb	Mar	Apr	May	Jun	Jul	Aug	Sep	Oct	Nov	Dec
# CO2	77	75	78	81	83	82	78	77	79	78	77	77
# CO2 > 27	3	1	0	0	2	6	11	3	16	2	5	1
Pop. Mean	22	22	23	22	23	24	23	22	24	22	22	22
Std. Deviation	3.10	2.69	2.44	2.89	2.88	3.20	4.29	3.19	3.76	2.73	3.10	2.79
% CO2 > 27	4%	1%	0%	0%	2%	7%	14%	4%	20%	3%	6%	1%



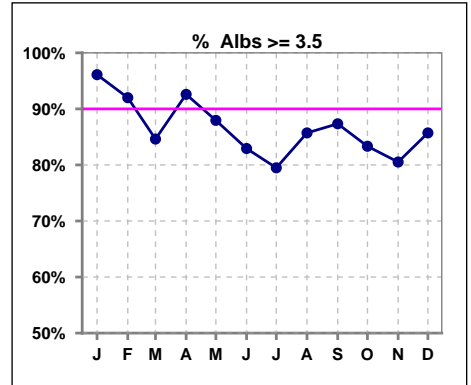
*Albumin values use BCG method - as of July 2001

II. NUTRITION

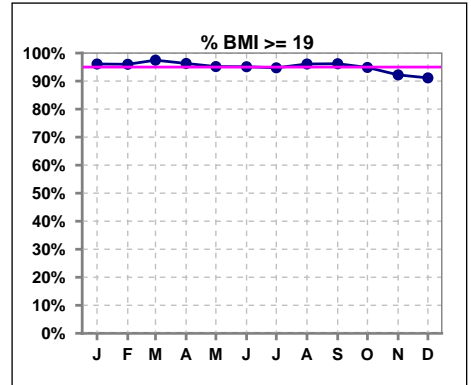
	Jan	Feb	Mar	Apr	May	Jun	Jul	Aug	Sep	Oct	Nov	Dec
# Albumin	77	75	78	81	83	82	78	77	79	78	77	77
# Albumin >= 4.0	56	48	31	42	33	29	27	29	37	33	33	30
Pop. Mean	4.1	4.1	3.9	4.0	3.8	3.8	3.7	3.8	3.9	3.9	3.8	3.8
Std. Deviation	0.35	0.39	0.40	0.39	0.35	0.38	0.44	0.41	0.41	0.41	0.40	0.39
% Alb >= 4.0	73%	64%	40%	52%	40%	35%	35%	38%	47%	42%	43%	39%



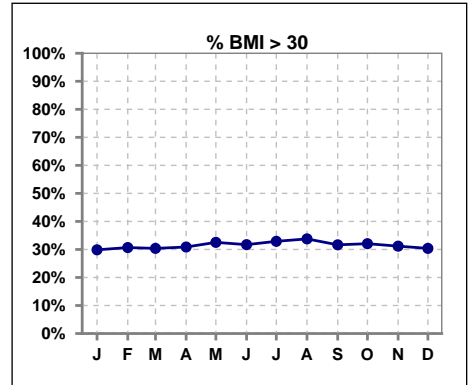
	Jan	Feb	Mar	Apr	May	Jun	Jul	Aug	Sep	Oct	Nov	Dec
# Albumin	77	75	78	81	83	82	78	77	79	78	77	77
# Albumin >= 3.5	74	69	66	75	73	68	62	66	69	65	62	66
Pop. Mean	4.1	4.1	3.9	4.0	3.8	3.8	3.7	3.8	3.9	3.9	3.8	3.8
Std. Deviation	0.35	0.39	0.40	0.39	0.35	0.38	0.44	0.41	0.41	0.41	0.40	0.39
% Alb >= 3.5	96%	92%	85%	93%	88%	83%	79%	86%	87%	83%	81%	86%



	Jan	Feb	Mar	Apr	May	Jun	Jul	Aug	Sep	Oct	Nov	Dec
# BMI	77	75	78	81	83	82	76	77	79	78	77	79
# BMI >= 19	74	72	77	78	79	78	72	74	76	74	71	72
Pop. Mean	27	27	27	27	27	27	27	28	27	27	27	27
Std. Deviation	6.0	6.0	5.9	6.0	6.0	5.8	6.0	6.2	6.1	6.4	6.4	6.5
% BMI >= 19	96%	96%	97%	96%	95%	95%	95%	96%	96%	95%	92%	91%



	Jan	Feb	Mar	Apr	May	Jun	Jul	Aug	Sep	Oct	Nov	Dec
# BMI	77	75	78	81	83	82	76	77	79	78	77	79
# BMI > 30	23	23	24	25	27	26	25	26	25	25	24	24
Pop. Mean	27	27	27	27	27	27	27	28	27	27	27	27
Std. Deviation	6.0	6.0	5.9	6.0	6.0	5.8	6.0	6.2	6.1	6.4	6.4	6.5
% BMI > 30	30%	31%	30%	31%	33%	32%	33%	34%	32%	32%	31%	30%

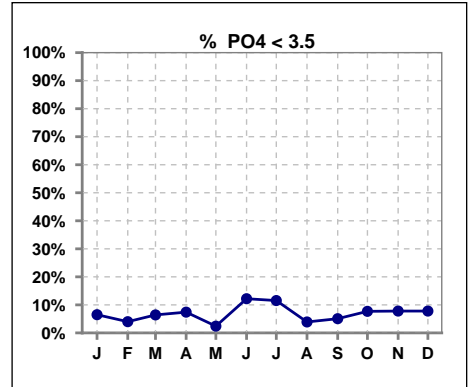


Methodology: a) All labs for 'Adequacy of Dialysis', 'Nutrition', 'Osteodystrophy', 'Anemia' and 'Diabetes' based on last value of month; b) BP's and #L processed are average of all values for month; c) Access data takes last access of month; d) Values for SGA and 'Infection Control' use most recent result.

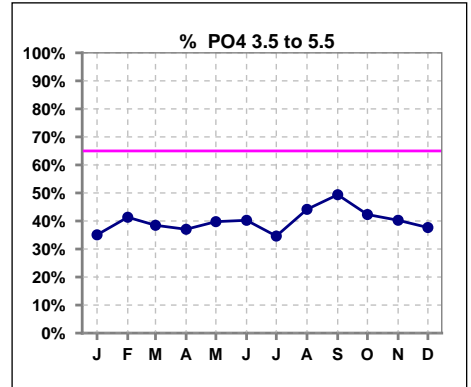
Lab methodology for PTH changed January 2012

III. OSTEODYSTROPHY

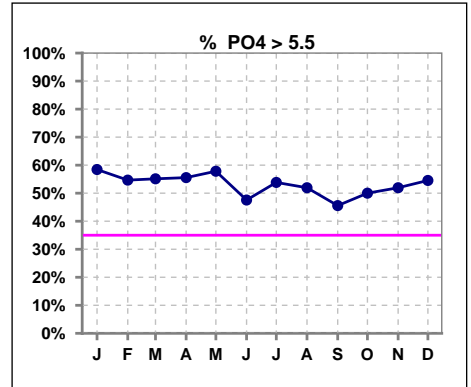
	Jan	Feb	Mar	Apr	May	Jun	Jul	Aug	Sep	Oct	Nov	Dec
# PO4	77	75	78	81	83	82	78	77	79	78	77	77
# PO4 < 3.5	5	3	5	6	2	10	9	3	4	6	6	6
Pop. Mean	6.3	6.0	6.3	6.1	6.1	5.8	5.7	5.7	5.8	5.8	6.1	6.0
Std. Deviation	2.24	2.02	1.97	1.87	1.82	2.11	1.82	1.64	1.84	1.83	2.11	1.88
% PO4 < 3.5	6%	4%	6%	7%	2%	12%	12%	4%	5%	8%	8%	8%



	Jan	Feb	Mar	Apr	May	Jun	Jul	Aug	Sep	Oct	Nov	Dec
# PO4	77	75	78	81	83	82	78	77	79	78	77	77
# PO4 3.5 to 5.5	27	31	30	30	33	33	27	34	39	33	31	29
Pop. Mean	6.3	6.0	6.3	6.1	6.1	5.8	5.7	5.7	5.8	5.8	6.1	6.0
Std. Deviation	2.24	2.02	1.97	1.87	1.82	2.11	1.82	1.64	1.84	1.83	2.11	1.88
% PO4 3.5 to 5.5	35%	41%	38%	37%	40%	40%	35%	44%	49%	42%	40%	38%



	Jan	Feb	Mar	Apr	May	Jun	Jul	Aug	Sep	Oct	Nov	Dec
# PO4	77	75	78	81	83	82	78	77	79	78	77	77
# PO4 > 5.5	45	41	43	45	48	39	42	40	36	39	40	42
Pop. Mean	6.3	6.0	6.3	6.1	6.1	5.8	5.7	5.7	5.8	5.8	6.1	6.0
Std. Deviation	2.24	2.02	1.97	1.87	1.82	2.11	1.82	1.64	1.84	1.83	2.11	1.88
% PO4 > 5.5	58%	55%	55%	56%	58%	48%	54%	52%	46%	50%	52%	55%

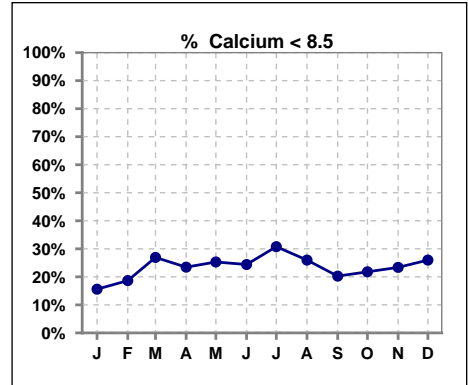


Methodology: a) All labs for 'Adequacy of Dialysis', 'Nutrition', 'Osteodystrophy', 'Anemia' and 'Diabetes' based on last value of month; b) BP's and #L processed are average of all values for month; c) Access data takes last access of month; d) Values for SGA and 'Infection Control' use most recent result.

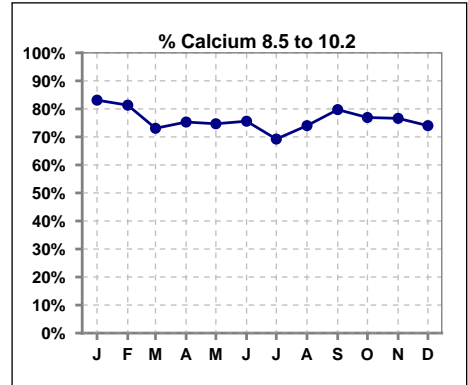
Lab methodology for PTH changed January 2012

III. OSTEODYSTROPHY - CONT.

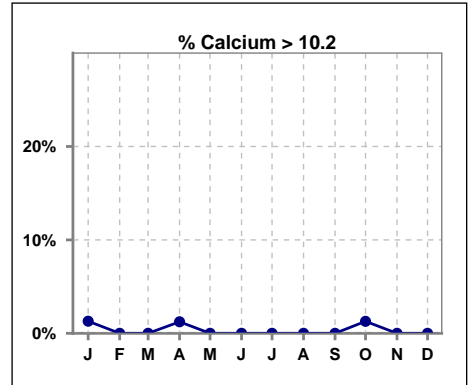
	Jan	Feb	Mar	Apr	May	Jun	Jul	Aug	Sep	Oct	Nov	Dec
# Calcium	77	75	78	81	83	82	78	77	79	78	77	77
# Calcium < 8.5	12	14	21	19	21	20	24	20	16	17	18	20
Pop. Mean	9.0	8.9	8.9	8.9	8.9	8.9	8.8	8.9	9.0	9.0	8.9	8.9
Std. Deviation	0.67	0.68	0.63	0.70	0.57	0.72	0.69	0.63	0.67	0.81	0.67	0.77
% Calcium < 8.5	16%	19%	27%	23%	25%	24%	31%	26%	20%	22%	23%	26%



	Jan	Feb	Mar	Apr	May	Jun	Jul	Aug	Sep	Oct	Nov	Dec
# Calcium	77	75	78	81	83	82	78	77	79	78	77	77
# Calcium 8.5 to 10.2	64	61	57	61	62	62	54	57	63	60	59	57
Pop. Mean	9.0	8.9	8.9	8.9	8.9	8.9	8.8	8.9	9.0	9.0	8.9	8.9
Std. Deviation	0.67	0.68	0.63	0.70	0.57	0.72	0.69	0.63	0.67	0.81	0.67	0.77
% Calcium 8.5 to 10.2	83%	81%	73%	75%	75%	76%	69%	74%	80%	77%	77%	74%



	Jan	Feb	Mar	Apr	May	Jun	Jul	Aug	Sep	Oct	Nov	Dec
# Calcium	77	75	78	81	83	82	78	77	79	78	77	77
# Calcium > 10.2	1	0	0	1	0	0	0	0	0	1	0	0
Pop. Mean	9.0	8.9	8.9	8.9	8.9	8.9	8.8	8.9	9.0	9.0	8.9	8.9
Std. Deviation	0.67	0.68	0.63	0.70	0.57	0.72	0.69	0.63	0.67	0.81	0.67	0.77
% Calcium > 10.2	1%	0%	0%	1%	0%	0%	0%	0%	0%	1%	0%	0%

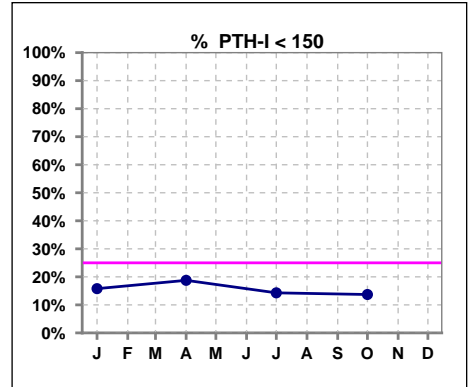


Methodology: a) All labs for 'Adequacy of Dialysis', 'Nutrition', 'Osteodystrophy', 'Anemia' and 'Diabetes' based on last value of month; b) BP's and #L processed are average of all values for month; c) Access data takes last access of month; d) Values for SGA and 'Infection Control' use most recent result.

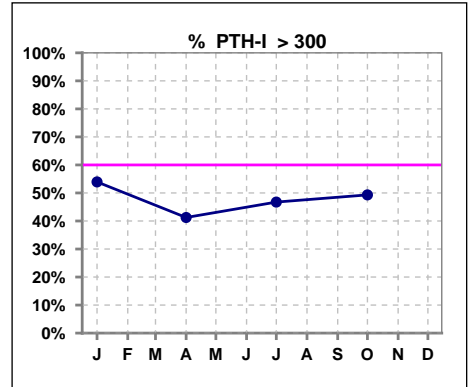
Lab methodology for PTH changed January 2012

III. OSTEODYSTROPHY - CONT.

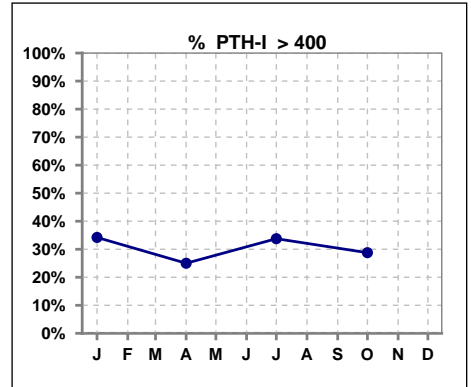
	Jan	Feb	Mar	Apr	May	Jun	Jul	Aug	Sep	Oct	Nov	Dec
# PTH-I	76			80			77			73		
# PTH-I < 150	12			15			11			10		
Pop. Mean	373			322			366			345		
Std. Deviation	245			244			290			251		
% PTH-I < 150	16%			19%			14%			14%		



	Jan	Feb	Mar	Apr	May	Jun	Jul	Aug	Sep	Oct	Nov	Dec
# PTH-I	76			80			77			73		
# PTH-I > 300	41			33			36			36		
Pop. Mean	373			322			366			345		
Std. Deviation	245			244			290			251		
% PTH-I > 300	54%			41%			47%			49%		



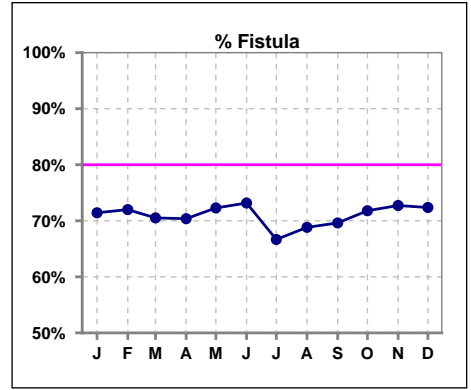
	Jan	Feb	Mar	Apr	May	Jun	Jul	Aug	Sep	Oct	Nov	Dec
# PTH-I	76			80			77			73		
# PTH-I > 400	26			20			26			21		
Pop. Mean	373			322			366			345		
Std. Deviation	245			244			290			251		
% PTH-I > 400	34%			25%			34%			29%		



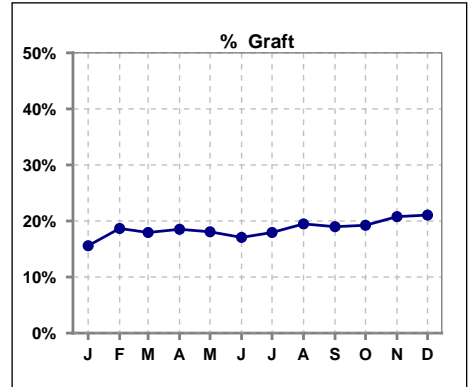
Methodology: a) All labs for 'Adequacy of Dialysis', 'Nutrition', 'Osteodystrophy', 'Anemia' and 'Diabetes' based on last value of month; b) BP's and #L processed are average of all values for month; c) Access data takes last access of month; d) Values for SGA and 'Infection Control' use most recent result.

IV. ACCESS

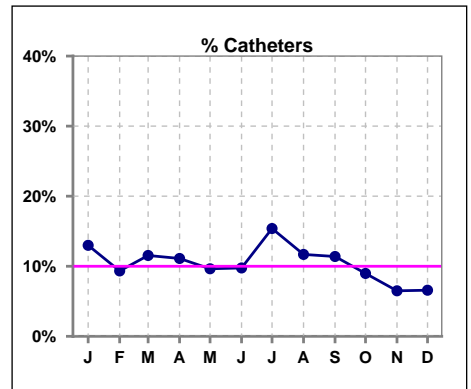
	Jan	Feb	Mar	Apr	May	Jun	Jul	Aug	Sep	Oct	Nov	Dec
# Access	77	75	78	81	83	82	78	77	79	78	77	76
# Fistula	55	54	55	57	60	60	52	53	55	56	56	55
% Fistula	71%	72%	71%	70%	72%	73%	67%	69%	70%	72%	73%	72%



	Jan	Feb	Mar	Apr	May	Jun	Jul	Aug	Sep	Oct	Nov	Dec
# Access	77	75	78	81	83	82	78	77	79	78	77	76
# Graft	12	14	14	15	15	14	14	15	15	15	16	16
% Graft	16%	19%	18%	19%	18%	17%	18%	19%	19%	19%	21%	21%



	Jan	Feb	Mar	Apr	May	Jun	Jul	Aug	Sep	Oct	Nov	Dec
# Access	77	75	78	81	83	82	78	77	79	78	77	76
# Catheters	10	7	9	9	8	8	12	9	9	7	5	5
% Catheters	13%	9%	12%	11%	10%	10%	15%	12%	11%	9%	6%	7%



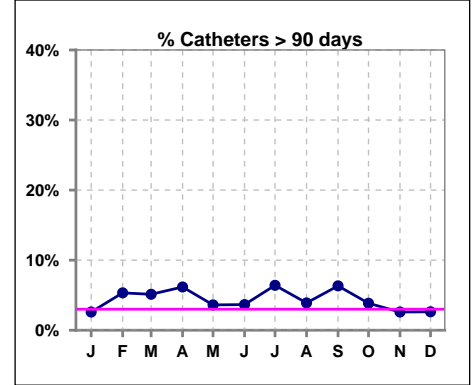
Methodology: a) All labs for 'Adequacy of Dialysis', 'Nutrition', 'Osteodystrophy', 'Anemia' and 'Diabetes' based on last value of month; b) BP's and #L processed are average of all values for month; c) Access data takes last access of month; d) Values for SGA and 'Infection Control' use most recent result.

IV. ACCESS - CONT.

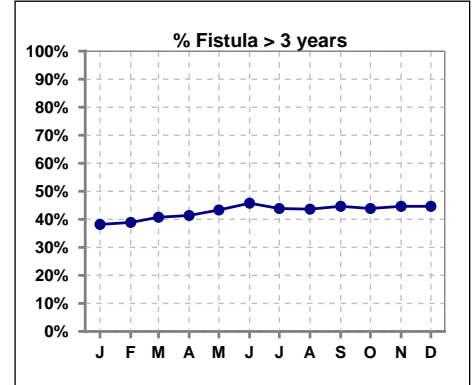
Catheters > 90 days

	Jan	Feb	Mar	Apr	May	Jun	Jul	Aug	Sep	Oct	Nov	Dec
# Access	77	75	78	81	83	82	78	77	79	78	77	76
# Catheters	2	4	4	5	3	3	5	3	5	3	2	2
% Catheters	3%	5%	5%	6%	4%	4%	6%	4%	6%	4%	3%	3%

Definition: Catheter in use on last treatment of the month



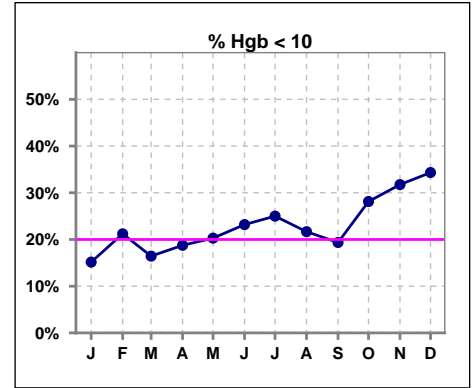
	Jan	Feb	Mar	Apr	May	Jun	Jul	Aug	Sep	Oct	Nov	Dec
# Fistula	55	54	54	58	60	59	57	55	56	57	56	56
# Fistula > 3 yrs	21	21	22	24	26	27	25	24	25	25	25	25
% Fistula > 3 yrs	38%	39%	41%	41%	43%	46%	44%	44%	45%	44%	45%	45%



V. ANEMIA

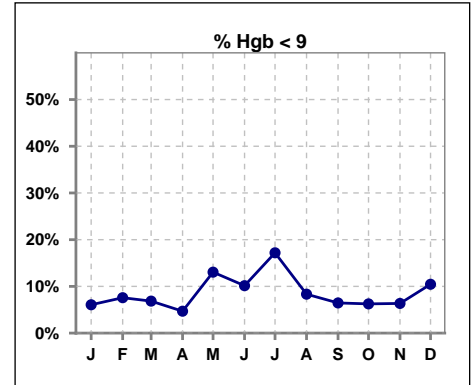
	Jan	Feb	Mar	Apr	May	Jun	Jul	Aug	Sep	Oct	Nov	Dec
# Hgb	66	66	73	64	69	69	64	60	62	64	63	67
# Hgb < 10	10	14	12	12	14	16	16	13	12	18	20	23
Pop. Mean	10.8	10.7	10.9	10.9	10.5	10.6	10.4	10.5	10.7	10.6	10.3	10.3
Std. Deviation	1.0	1.2	1.0	1.1	1.1	1.2	1.3	0.9	1.2	1.0	0.9	1.1
% Hgb < 10	15%	21%	16%	19%	20%	23%	25%	22%	19%	28%	32%	34%

Note: Excludes patients who received no ESA in month.



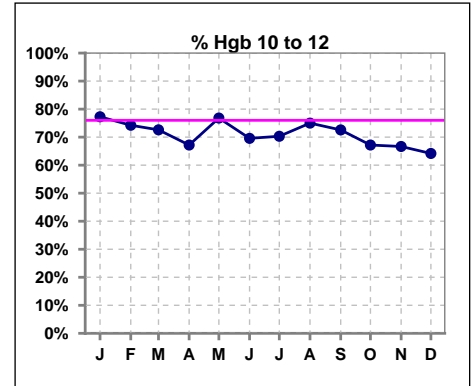
	Jan	Feb	Mar	Apr	May	Jun	Jul	Aug	Sep	Oct	Nov	Dec
# Hgb	66	66	73	64	69	69	64	60	62	64	63	67
# Hgb < 9	4	5	5	3	9	7	11	5	4	4	4	7
Pop. Mean	10.8	10.7	10.9	10.9	10.5	10.6	10.4	10.5	10.7	10.6	10.3	10.3
Std. Deviation	1.0	1.2	1.0	1.1	1.1	1.2	1.3	0.9	1.2	1.0	0.9	1.1
% Hgb < 9	6%	8%	7%	5%	13%	10%	17%	8%	6%	6%	6%	10%

Note: Excludes patients who received no ESA in month.



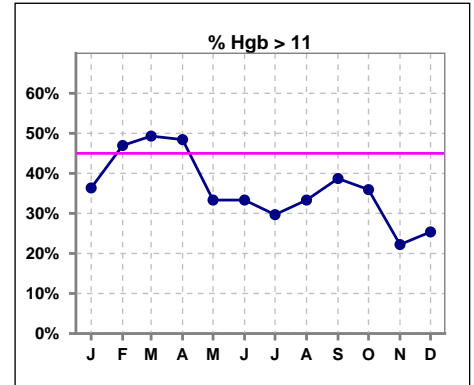
	Jan	Feb	Mar	Apr	May	Jun	Jul	Aug	Sep	Oct	Nov	Dec
# Hgb	66	66	73	64	69	69	64	60	62	64	63	67
# Hgb 10 to 12	51	49	53	43	53	48	45	45	45	43	42	43
Pop. Mean	10.8	10.7	10.9	10.9	10.5	10.6	10.4	10.5	10.7	10.6	10.3	10.3
Std. Deviation	1.0	1.2	1.0	1.1	1.1	1.2	1.3	0.9	1.2	1.0	0.9	1.1
% Hgb 10 to 12	77%	74%	73%	67%	77%	70%	70%	75%	73%	67%	67%	64%

Note: Excludes patients who received no ESA in month.



	Jan	Feb	Mar	Apr	May	Jun	Jul	Aug	Sep	Oct	Nov	Dec
# Hgb	66	66	73	64	69	69	64	60	62	64	63	67
# Hgb > 11	24	31	36	31	23	23	19	20	24	23	14	17
Pop. Mean	10.8	10.7	10.9	10.9	10.5	10.6	10.4	10.5	10.7	10.6	10.3	10.3
Std. Deviation	1.0	1.2	1.0	1.1	1.1	1.2	1.3	0.9	1.2	1.0	0.9	1.1
% Hgb > 11	36%	47%	49%	48%	33%	33%	30%	33%	39%	36%	22%	25%

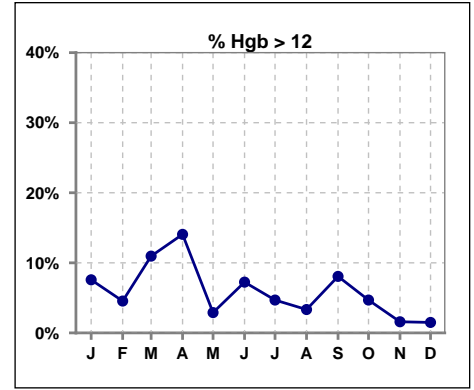
Note: Excludes patients who received no ESA in month.



V. ANEMIA - CONT.

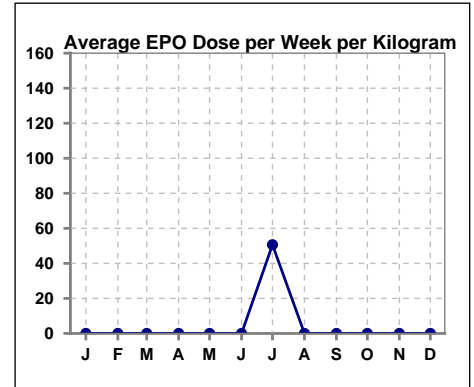
	Jan	Feb	Mar	Apr	May	Jun	Jul	Aug	Sep	Oct	Nov	Dec
# Hgb	66	66	73	64	69	69	64	60	62	64	63	67
# Hgb > 12	5	3	8	9	2	5	3	2	5	3	1	1
Pop. Mean	10.8	10.7	10.9	10.9	10.5	10.6	10.4	10.5	10.7	10.6	10.3	10.3
Std. Deviation	1.0	1.2	1.0	1.1	1.1	1.2	1.3	0.9	1.2	1.0	0.9	1.1
% Hgb > 12	8%	5%	11%	14%	3%	7%	5%	3%	8%	5%	2%	1%

Note: Excludes patients who received no ESA in month.



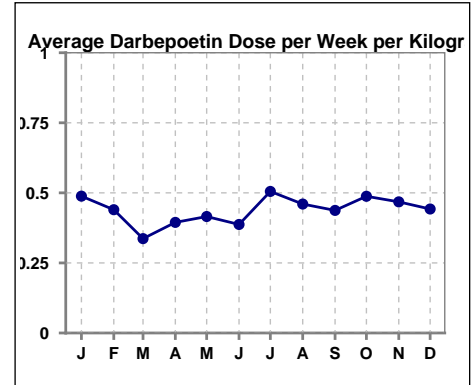
Average EPO Dose per Week per Kilogram

	Jan	Feb	Mar	Apr	May	Jun	Jul	Aug	Sep	Oct	Nov	Dec
# Average EPO	0	0	0	0	0	0	50.6	0	0	0	0	0



Average Darbeopetin Dose per Week per Kilogram

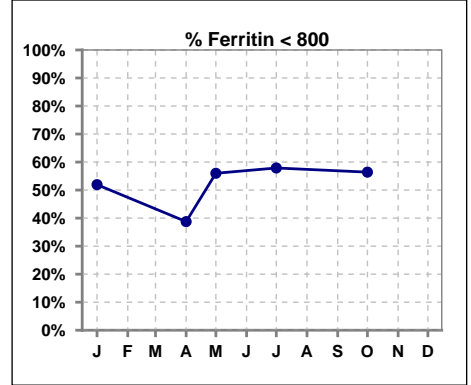
	Jan	Feb	Mar	Apr	May	Jun	Jul	Aug	Sep	Oct	Nov	Dec
# Average Darbeopetin	.5	.4	.3	.4	.4	.4	.5	.5	.4	.5	.5	.4



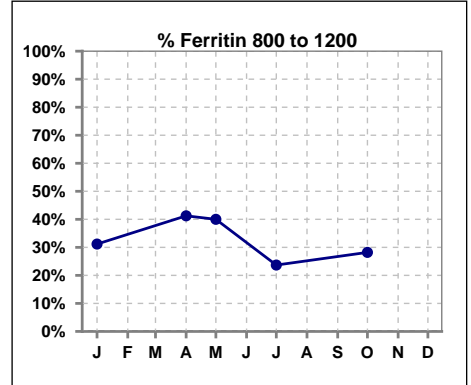
V. ANEMIA - CONT.

Iron Profile

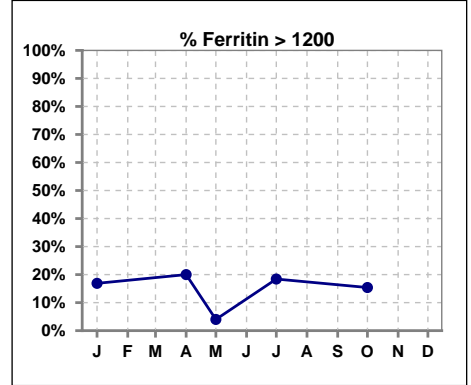
	Jan	Feb	Mar	Apr	May	Jun	Jul	Aug	Sep	Oct	Nov	Dec
# Ferritin	77			80	25		76			78		
# Ferritin < 800	40			31	14		44			44		
Pop. Mean	832			878	719		803			801		
Std. Deviation	423			449	307		392			435		
% Ferritin < 800	52%			39%	56%		58%			56%		



	Jan	Feb	Mar	Apr	May	Jun	Jul	Aug	Sep	Oct	Nov	Dec
# Ferritin	77			80	25		76			78		
# Ferritin 800 to 1200	24			33	10		18			22		
Pop. Mean	832			878	719		803			801		
Std. Deviation	423			449	307		392			435		
% Ferritin 800 to 1200	31%			41%	40%		24%			28%		

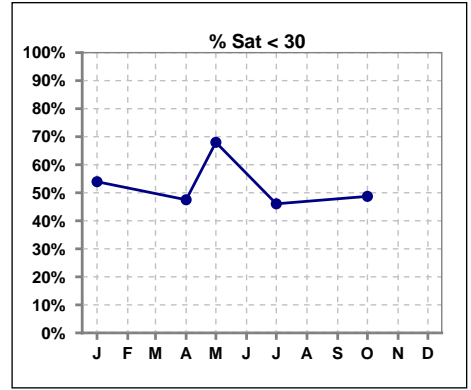


	Jan	Feb	Mar	Apr	May	Jun	Jul	Aug	Sep	Oct	Nov	Dec
# Ferritin	77			80	25		76			78		
# Ferritin > 1200	13			16	1		14			12		
Pop. Mean	832			878	719		803			801		
Std. Deviation	423			449	307		392			435		
% Ferritin > 1200	17%			20%	4%		18%			15%		

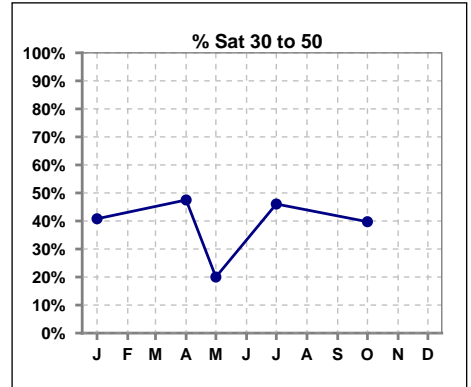


V. ANEMIA - CONT.

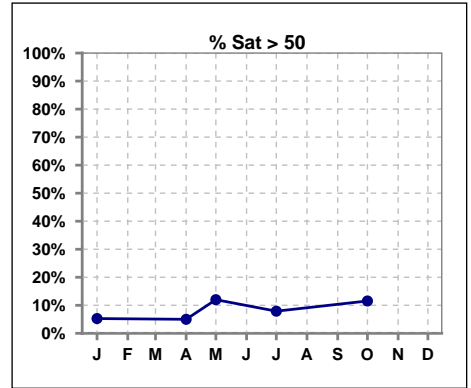
	Jan	Feb	Mar	Apr	May	Jun	Jul	Aug	Sep	Oct	Nov	Dec
# % Sat	76			80	25		76			78		
# % Sat < 30	41			38	17		35			38		
Pop. Mean	32			30	29		32			31		
Std. Deviation	13			12	14		14			13		
% % Sat < 30	54%			48%	68%		46%			49%		



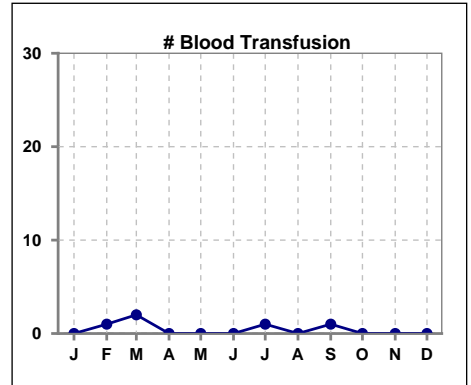
	Jan	Feb	Mar	Apr	May	Jun	Jul	Aug	Sep	Oct	Nov	Dec
# % Sat	76			80	25		76			78		
# % Sat 30 to 50	31			38	5		35			31		
Pop. Mean	32			30	29		32			31		
Std. Deviation	13			12	14		14			13		
% % Sat 30 to 50	41%			48%	20%		46%			40%		



	Jan	Feb	Mar	Apr	May	Jun	Jul	Aug	Sep	Oct	Nov	Dec
# % Sat	76			80	25		76			78		
# % Sat > 50	4			4	3		6			9		
Pop. Mean	32			30	29		32			31		
Std. Deviation	13			12	14		14			13		
% % Sat > 50	5%			5%	12%		8%			12%		



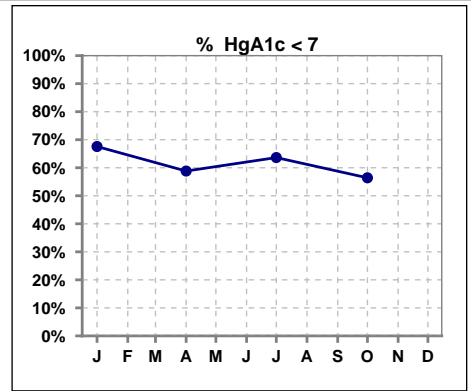
	Jan	Feb	Mar	Apr	May	Jun	Jul	Aug	Sep	Oct	Nov	Dec
# Patient	77	75	78	81	83	82	78	77	79	78	77	79
# Blood Transfusion	0	1	2	0	0	0	1	0	1	0	0	0



Methodology: a) All labs for 'Adequacy of Dialysis', 'Nutrition', 'Osteodystrophy', 'Anemia' and 'Diabetes' based on last value of month; b) BP's and #L processed are average of all values for month; c) Access data takes last access of month; d) Values for SGA and 'Infection Control' use most recent result.

VI. Diabetes

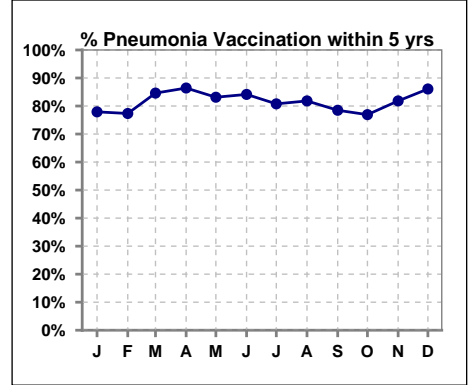
	Jan	Feb	Mar	Apr	May	Jun	Jul	Aug	Sep	Oct	Nov	Dec
# HgA1c	37			34			33			39		
# HgA1c < 7	25			20			21			22		
Pop. Mean	6.9			6.9			6.7			6.9		
Std. Deviation	1.43			1.42			1.31			1.59		
% HgA1c < 7	68%			59%			64%			56%		



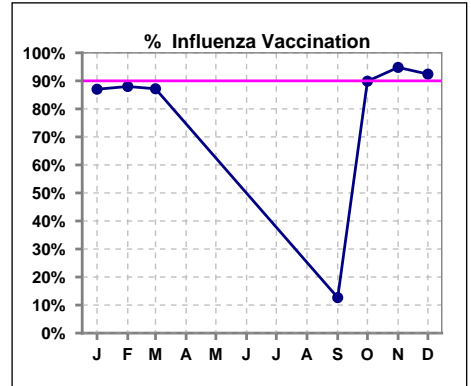
VII. Infection Control

Pneumonia vaccination within the past five years

	Jan	Feb	Mar	Apr	May	Jun	Jul	Aug	Sep	Oct	Nov	Dec
# Patient	77	75	78	81	83	82	78	77	79	78	77	79
# Pneumonia	60	58	66	70	69	69	63	63	62	60	63	68
% Pneumonia	78%	77%	85%	86%	83%	84%	81%	82%	78%	77%	82%	86%



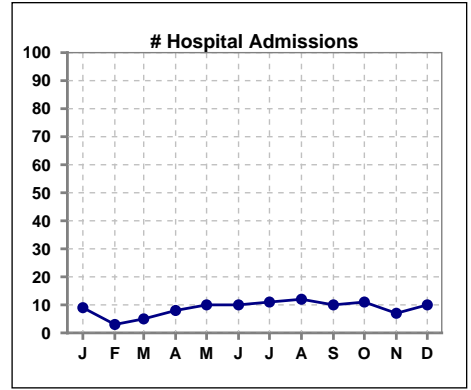
	Jan	Feb	Mar	Apr	May	Jun	Jul	Aug	Sep	Oct	Nov	Dec
# Patient	77	75	78						79	79	77	79
# Influenza	67	66	68						10	71	73	73
% Influenza	87%	88%	87%						13%	90%	95%	92%



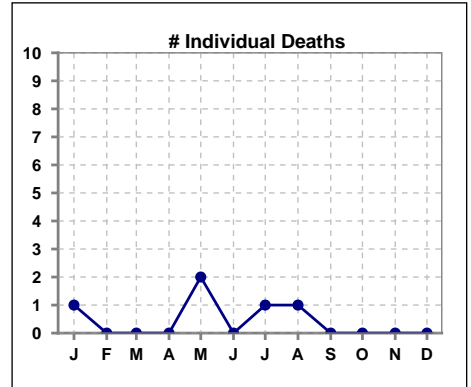
Methodology: a) All labs for 'Adequacy of Dialysis', 'Nutrition', 'Osteodystrophy', 'Anemia' and 'Diabetes' based on last value of month; b) BP's and #L processed are average of all values for month; c) Access data takes last access of month; d) Values for SGA and 'Infection Control' use most recent result.

VIII. Outcome measures

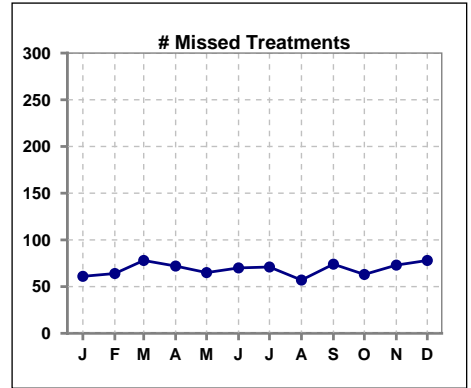
	Jan	Feb	Mar	Apr	May	Jun	Jul	Aug	Sep	Oct	Nov	Dec
# Patient	77	75	78	81	83	82	78	77	79	78	77	79
# Hospital Admissions	9	3	5	8	10	10	11	12	10	11	7	10



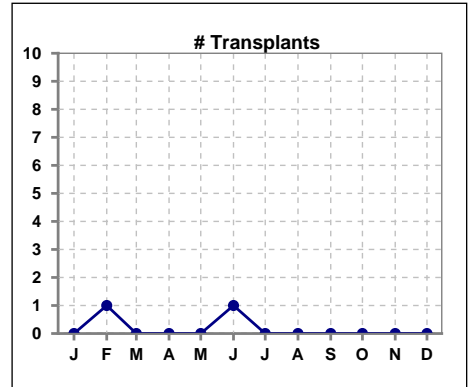
	Jan	Feb	Mar	Apr	May	Jun	Jul	Aug	Sep	Oct	Nov	Dec
# Patient	77	75	78	81	83	82	78	77	79	78	77	79
# Individual Deaths	1	0	0	0	2	0	1	1	0	0	0	0



	Jan	Feb	Mar	Apr	May	Jun	Jul	Aug	Sep	Oct	Nov	Dec
# Patient	77	75	78	81	83	82	78	77	79	78	77	79
# Missed Treatments	61	64	78	72	65	70	71	57	74	63	73	78



	Jan	Feb	Mar	Apr	May	Jun	Jul	Aug	Sep	Oct	Nov	Dec
# Patient	77	75	78	81	83	82	78	77	79	78	77	79
# Transplants	0	1	0	0	0	1	0	0	0	0	0	0



Methodology: a) All labs for 'Adequacy of Dialysis', 'Nutrition', 'Osteodystrophy', 'Anemia' and 'Diabetes' based on last value of month; b) BP's and #L processed are average of all values for month; c) Access data takes last access of month; d) Values for SGA and 'Infection Control' use most recent result.