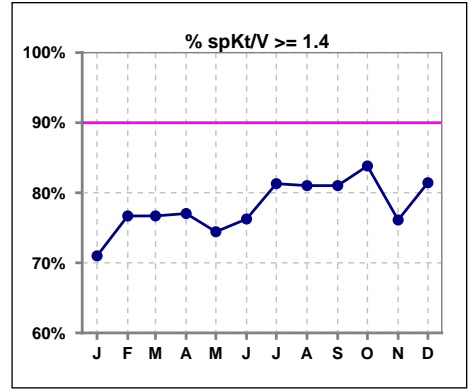
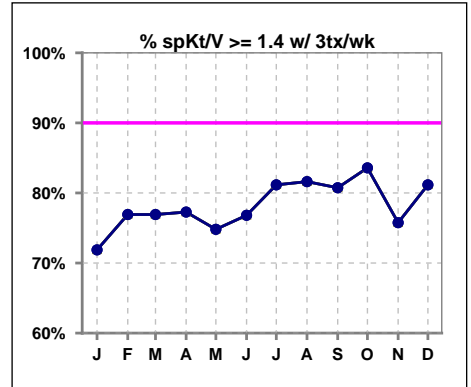


**I. ADEQUACY OF DIALYSIS**

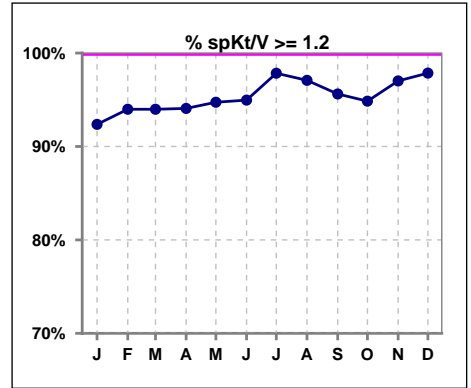
	Jan	Feb	Mar	Apr	May	Jun	Jul	Aug	Sep	Oct	Nov	Dec
# spKt/V	131	133	133	135	133	139	139	137	137	136	134	140
# spKt/V >= 1.4	93	102	102	104	99	106	113	111	111	114	102	114
Pop. Mean	1.59	1.61	1.60	1.62	1.63	1.63	1.65	1.65	1.64	1.64	1.63	1.65
Std. Deviation	0.34	0.33	0.32	0.31	0.32	0.31	0.29	0.30	0.30	0.30	0.31	0.31
% spKt/V >= 1.4	71%	77%	77%	77%	74%	76%	81%	81%	81%	84%	76%	81%



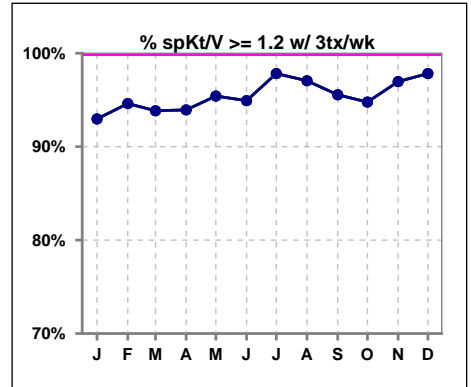
	Jan	Feb	Mar	Apr	May	Jun	Jul	Aug	Sep	Oct	Nov	Dec
# spKt/V w/ 3tx/wk	128	130	130	132	131	138	138	136	135	134	132	138
# spKt/V >= 1.4 w/3tx/wk	92	100	100	102	98	106	112	111	109	112	100	112
Pop. Mean	1.60	1.61	1.60	1.62	1.63	1.63	1.65	1.65	1.64	1.64	1.63	1.64
Std. Deviation	0.34	0.33	0.31	0.31	0.31	0.31	0.30	0.30	0.30	0.30	0.31	0.29
% >= 1.4 w/3tx/wk	72%	77%	77%	77%	75%	77%	81%	82%	81%	84%	76%	81%



	Jan	Feb	Mar	Apr	May	Jun	Jul	Aug	Sep	Oct	Nov	Dec
# spKt/V	131	133	133	135	133	139	139	137	137	136	134	140
# spKt/V >= 1.2	121	125	125	127	126	132	136	133	131	129	130	137
Pop. Mean	1.59	1.61	1.60	1.62	1.63	1.63	1.65	1.65	1.64	1.64	1.63	1.65
Std. Deviation	0.34	0.33	0.32	0.31	0.32	0.31	0.29	0.30	0.30	0.30	0.31	0.31
% spKt/V >= 1.2	92%	94%	94%	94%	95%	95%	98%	97%	96%	95%	97%	98%



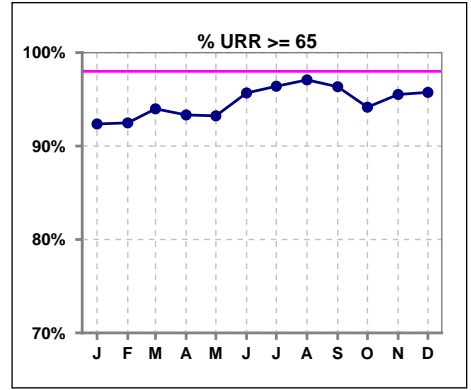
	Jan	Feb	Mar	Apr	May	Jun	Jul	Aug	Sep	Oct	Nov	Dec
# spKt/V w/ 3tx/wk	128	130	130	132	131	138	138	136	135	134	132	138
# spKt/V >= 1.2 w/3tx/wk	119	123	122	124	125	131	135	132	129	127	128	135
Pop. Mean	1.60	1.61	1.60	1.62	1.63	1.63	1.65	1.65	1.64	1.64	1.63	1.64
Std. Deviation	0.34	0.33	0.31	0.31	0.31	0.31	0.30	0.30	0.30	0.30	0.31	0.29
% >= 1.2 w/3tx/wk	93%	95%	94%	94%	95%	95%	98%	97%	96%	95%	97%	98%



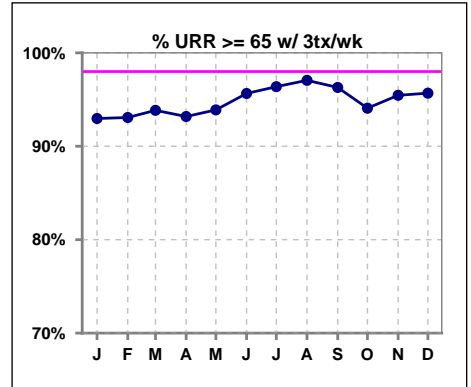
Methodology: a) All labs for 'Adequacy of Dialysis', 'Nutrition', 'Osteodystrophy', 'Anemia' and 'Diabetes' based on last value of month; b) BP's and #L processed are average of all values for month; c) Access data takes last access of month; d) Values for SGA and 'Infection Control' use most recent result.

**I. ADEQUACY OF DIALYSIS - CONT.**

	Jan	Feb	Mar	Apr	May	Jun	Jul	Aug	Sep	Oct	Nov	Dec
# URR	131	133	133	135	133	139	139	137	137	137	134	141
# URR >= 65	121	123	125	126	124	133	134	133	132	129	128	135
Pop. Mean	74	75	75	75	75	75	76	76	75	75	75	75
Std. Deviation	7.21	7.03	7.17	6.90	6.60	6.37	5.74	6.08	5.97	7.76	6.10	7.92
% URR >= 65	92%	92%	94%	93%	93%	96%	96%	97%	96%	94%	96%	96%



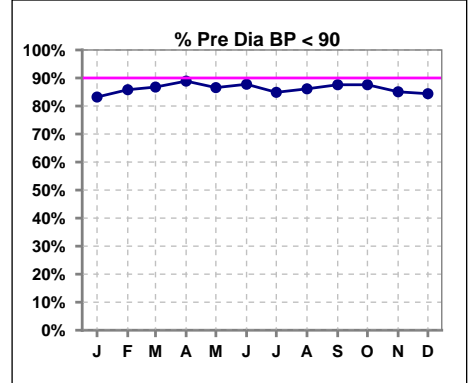
	Jan	Feb	Mar	Apr	May	Jun	Jul	Aug	Sep	Oct	Nov	Dec
# URR w/ 3tx/wk	128	130	130	132	131	138	138	136	135	135	132	139
# URR>=65 w/ 3tx/wk	119	121	122	123	123	132	133	132	130	127	126	133
Pop. Mean	75	75	74	75	75	75	76	76	75	75	75	75
Std. Deviation	7.15	6.99	7.08	6.88	6.35	6.35	5.75	6.09	5.99	7.80	6.11	7.84
% URR>=65 w/ 3tx/wk	93%	93%	94%	93%	94%	96%	96%	97%	96%	94%	95%	96%



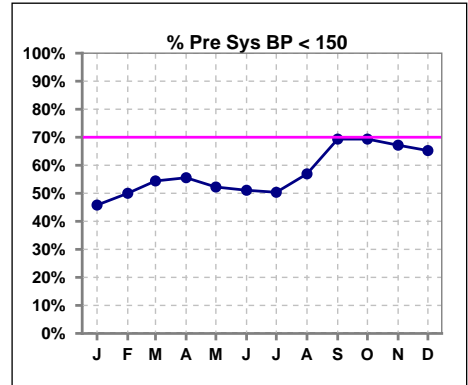
**I. ADEQUACY OF DIALYSIS - CONT.**

**Blood Pressure Control (Pre)**

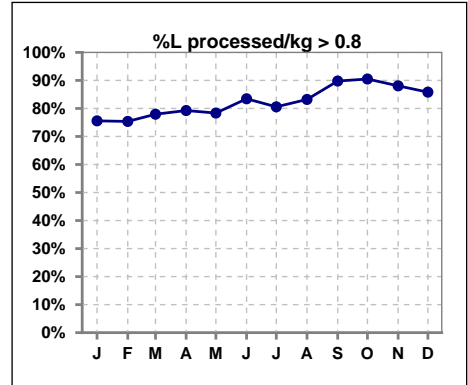
	Jan	Feb	Mar	Apr	May	Jun	Jul	Aug	Sep	Oct	Nov	Dec
# Pre Dia BP	131	134	136	135	134	139	139	137	137	137	134	141
# Pre Dia BP < 90	109	115	118	120	116	122	118	118	120	120	114	119
Pop. Mean	79	77	76	76	76	77	77	76	74	75	76	77
Std. Deviation	11.8	11.3	12.2	12.2	12.0	11.0	11.2	12.6	12.5	12.7	13.4	13.0
<b>% Pre Dia BP &lt; 90</b>	<b>83%</b>	<b>86%</b>	<b>87%</b>	<b>89%</b>	<b>87%</b>	<b>88%</b>	<b>85%</b>	<b>86%</b>	<b>88%</b>	<b>88%</b>	<b>85%</b>	<b>84%</b>



	Jan	Feb	Mar	Apr	May	Jun	Jul	Aug	Sep	Oct	Nov	Dec
# Pre Sys BP	131	134	136	135	134	139	139	137	137	137	134	141
# Pre Sys BP < 150	60	67	74	75	70	71	70	78	95	95	90	92
Pop. Mean	152	149	147	146	147	148	148	146	141	141	142	144
Std. Deviation	19.7	19.2	18.5	19.7	18.7	17.6	17.7	19.3	17.8	18.3	18.8	18.6
<b>%Pre Sys BP &lt;150</b>	<b>46%</b>	<b>50%</b>	<b>54%</b>	<b>56%</b>	<b>52%</b>	<b>51%</b>	<b>50%</b>	<b>57%</b>	<b>69%</b>	<b>69%</b>	<b>67%</b>	<b>65%</b>



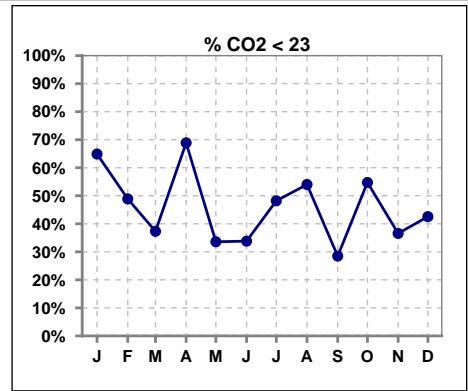
	Jan	Feb	Mar	Apr	May	Jun	Jul	Aug	Sep	Oct	Nov	Dec
# L processed/kg	131	134	136	135	134	139	139	137	137	137	134	141
# L processed/kg>0.8	99	101	106	107	105	116	112	114	123	124	118	121
Pop. Mean	1	1	1	1	1	1	1	1	1	1	1	1
Std. Deviation	0.3	0.3	0.3	0.3	0.3	0.3	0.3	0.3	0.3	0.3	0.3	0.3
<b>% L processed/kg&gt;0.8</b>	<b>76%</b>	<b>75%</b>	<b>78%</b>	<b>79%</b>	<b>78%</b>	<b>83%</b>	<b>81%</b>	<b>83%</b>	<b>90%</b>	<b>91%</b>	<b>88%</b>	<b>86%</b>



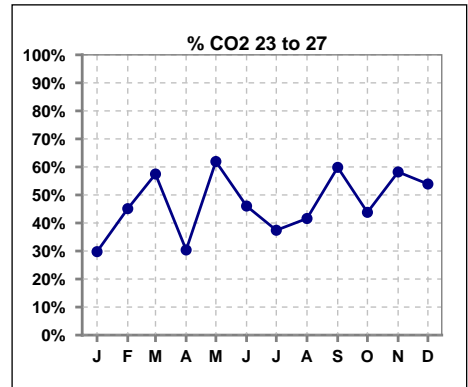
Methodology: a) All labs for 'Adequacy of Dialysis', 'Nutrition', 'Osteodystrophy', 'Anemia' and 'Diabetes' based on last value of month; b) BP's and #L processed are average of all values for month; c) Access data takes last access of month; d) Values for SGA and 'Infection Control' use most recent result.

**I. ADEQUACY OF DIALYSIS - CONT.**

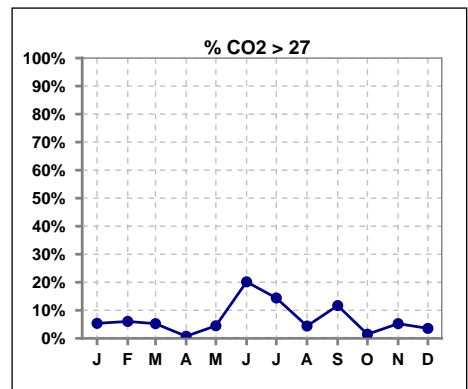
	Jan	Feb	Mar	Apr	May	Jun	Jul	Aug	Sep	Oct	Nov	Dec
# CO2	131	133	134	135	134	139	139	137	137	137	134	141
# CO2 < 23	85	65	50	93	45	47	67	74	39	75	49	60
Pop. Mean	21	22	23	21	23	24	23	22	24	22	23	23
Std. Deviation	3.36	3.39	2.89	3.19	2.64	3.67	3.94	2.85	3.09	2.40	2.35	2.60
<b>% CO2 &lt; 23</b>	<b>65%</b>	<b>49%</b>	<b>37%</b>	<b>69%</b>	<b>34%</b>	<b>34%</b>	<b>48%</b>	<b>54%</b>	<b>28%</b>	<b>55%</b>	<b>37%</b>	<b>43%</b>



	Jan	Feb	Mar	Apr	May	Jun	Jul	Aug	Sep	Oct	Nov	Dec
# CO2	131	133	134	135	134	139	139	137	137	137	134	141
# CO2 23 to 27	39	60	77	41	83	64	52	57	82	60	78	76
Pop. Mean	21	22	23	21	23	24	23	22	24	22	23	23
Std. Deviation	3.36	3.39	2.89	3.19	2.64	3.67	3.94	2.85	3.09	2.40	2.35	2.60
<b>% CO2 23 to 27</b>	<b>30%</b>	<b>45%</b>	<b>57%</b>	<b>30%</b>	<b>62%</b>	<b>46%</b>	<b>37%</b>	<b>42%</b>	<b>60%</b>	<b>44%</b>	<b>58%</b>	<b>54%</b>



	Jan	Feb	Mar	Apr	May	Jun	Jul	Aug	Sep	Oct	Nov	Dec
# CO2	131	133	134	135	134	139	139	137	137	137	134	141
# CO2 > 27	7	8	7	1	6	28	20	6	16	2	7	5
Pop. Mean	21	22	23	21	23	24	23	22	24	22	23	23
Std. Deviation	3.36	3.39	2.89	3.19	2.64	3.67	3.94	2.85	3.09	2.40	2.35	2.60
<b>% CO2 &gt; 27</b>	<b>5%</b>	<b>6%</b>	<b>5%</b>	<b>1%</b>	<b>4%</b>	<b>20%</b>	<b>14%</b>	<b>4%</b>	<b>12%</b>	<b>1%</b>	<b>5%</b>	<b>4%</b>

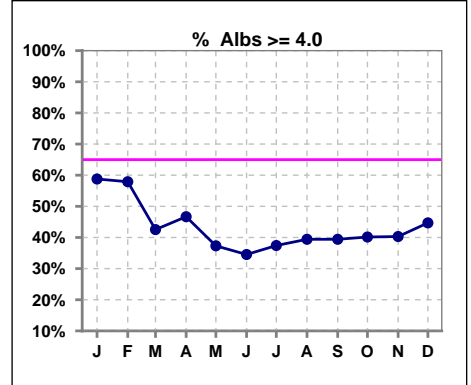


Methodology: a) All labs for 'Adequacy of Dialysis', 'Nutrition', 'Osteodystrophy', 'Anemia' and 'Diabetes' based on last value of month; b) BP's and #L processed are average of all values for month; c) Access data takes last access of month; d) Values for SGA and 'Infection Control' use most recent result.

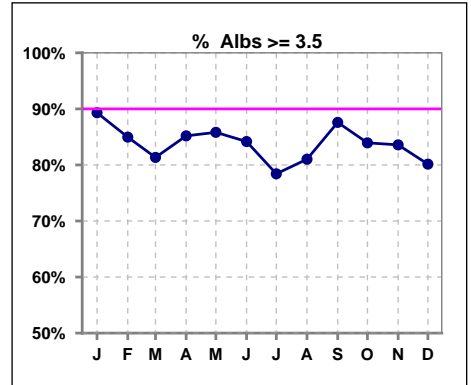
\*Albumin values use BCG method - as of July 2001

**II. NUTRITION**

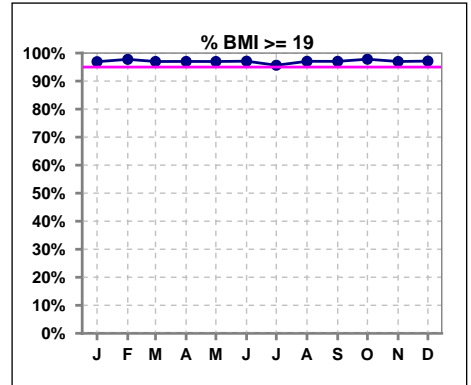
	Jan	Feb	Mar	Apr	May	Jun	Jul	Aug	Sep	Oct	Nov	Dec
# Albumin	131	133	134	135	134	139	139	137	137	137	134	141
# Albumin >= 4.0	77	77	57	63	50	48	52	54	54	55	54	63
Pop. Mean	4.0	3.9	3.8	3.8	3.8	3.8	3.7	3.8	3.8	3.8	3.8	3.8
Std. Deviation	0.40	0.48	0.42	0.42	0.37	0.37	0.40	0.40	0.36	0.41	0.42	0.41
% Alb >= 4.0	59%	58%	43%	47%	37%	35%	37%	39%	39%	40%	40%	45%



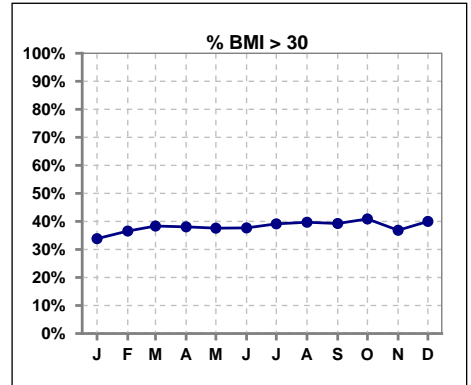
	Jan	Feb	Mar	Apr	May	Jun	Jul	Aug	Sep	Oct	Nov	Dec
# Albumin	131	133	134	135	134	139	139	137	137	137	134	141
# Albumin >= 3.5	117	113	109	115	115	117	109	111	120	115	112	113
Pop. Mean	4.0	3.9	3.8	3.8	3.8	3.8	3.7	3.8	3.8	3.8	3.8	3.8
Std. Deviation	0.40	0.48	0.42	0.42	0.37	0.37	0.40	0.40	0.36	0.41	0.42	0.41
% Alb >= 3.5	89%	85%	81%	85%	86%	84%	78%	81%	88%	84%	84%	80%



	Jan	Feb	Mar	Apr	May	Jun	Jul	Aug	Sep	Oct	Nov	Dec
# BMI	130	133	133	134	133	138	138	136	135	137	133	140
# BMI >= 19	126	131	129	130	129	134	132	132	131	134	129	136
Pop. Mean	30	30	29	29	29	29	29	29	29	30	29	30
Std. Deviation	7.6	7.5	7.5	7.6	7.7	7.6	7.7	7.6	7.5	7.7	7.6	7.5
% BMI >= 19	97%	98%	97%	97%	97%	97%	96%	97%	97%	98%	97%	97%



	Jan	Feb	Mar	Apr	May	Jun	Jul	Aug	Sep	Oct	Nov	Dec
# BMI	130	133	133	134	133	138	138	136	135	137	133	140
# BMI > 30	44	49	51	51	50	52	54	54	53	56	49	56
Pop. Mean	30	30	29	29	29	29	29	29	29	30	29	30
Std. Deviation	7.6	7.5	7.5	7.6	7.7	7.6	7.7	7.6	7.5	7.7	7.6	7.5
% BMI > 30	34%	37%	38%	38%	38%	38%	39%	40%	39%	41%	37%	40%

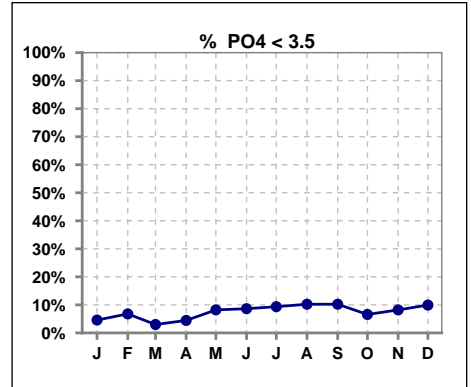


Methodology: a) All labs for 'Adequacy of Dialysis', 'Nutrition', 'Osteodystrophy', 'Anemia' and 'Diabetes' based on last value of month; b) BP's and #L processed are average of all values for month; c) Access data takes last access of month; d) Values for SGA and 'Infection Control' use most recent result.

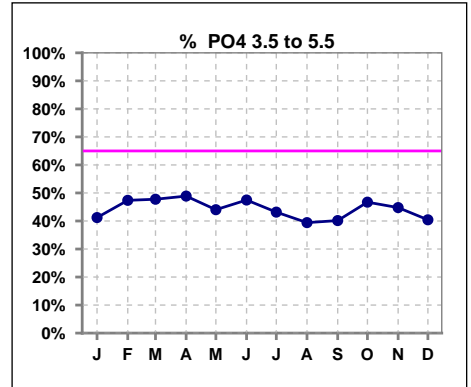
Lab methodology for PTH changed January 2012

**III. OSTEODYSTROPHY**

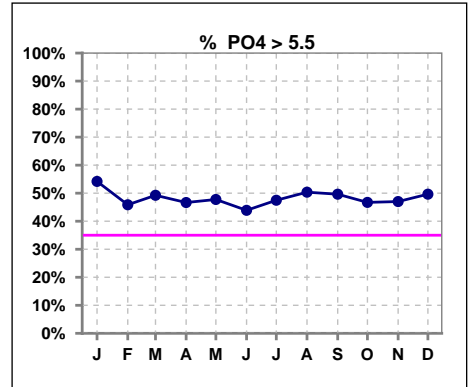
	Jan	Feb	Mar	Apr	May	Jun	Jul	Aug	Sep	Oct	Nov	Dec
# PO4	131	133	134	135	134	139	139	137	137	137	134	141
# PO4 < 3.5	6	9	4	6	11	12	13	14	14	9	11	14
Pop. Mean	5.9	5.5	5.7	5.8	5.8	5.7	5.7	5.7	5.6	5.6	5.6	5.6
Std. Deviation	1.73	1.64	1.54	1.63	1.92	1.83	1.98	1.89	1.85	1.80	1.74	1.83
% PO4 < 3.5	5%	7%	3%	4%	8%	9%	9%	10%	10%	7%	8%	10%



	Jan	Feb	Mar	Apr	May	Jun	Jul	Aug	Sep	Oct	Nov	Dec
# PO4	131	133	134	135	134	139	139	137	137	137	134	141
# PO4 3.5 to 5.5	54	63	64	66	59	66	60	54	55	64	60	57
Pop. Mean	5.9	5.5	5.7	5.8	5.8	5.7	5.7	5.7	5.6	5.6	5.6	5.6
Std. Deviation	1.73	1.64	1.54	1.63	1.92	1.83	1.98	1.89	1.85	1.80	1.74	1.83
% PO4 3.5 to 5.5	41%	47%	48%	49%	44%	47%	43%	39%	40%	47%	45%	40%



	Jan	Feb	Mar	Apr	May	Jun	Jul	Aug	Sep	Oct	Nov	Dec
# PO4	131	133	134	135	134	139	139	137	137	137	134	141
# PO4 > 5.5	71	61	66	63	64	61	66	69	68	64	63	70
Pop. Mean	5.9	5.5	5.7	5.8	5.8	5.7	5.7	5.7	5.6	5.6	5.6	5.6
Std. Deviation	1.73	1.64	1.54	1.63	1.92	1.83	1.98	1.89	1.85	1.80	1.74	1.83
% PO4 > 5.5	54%	46%	49%	47%	48%	44%	47%	50%	50%	47%	47%	50%

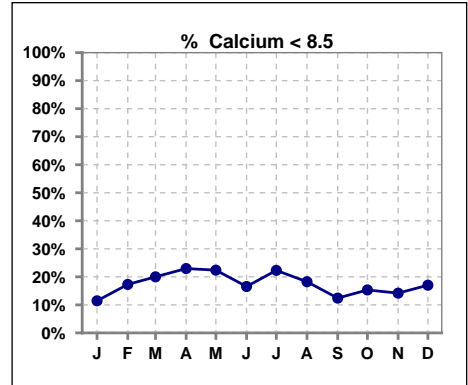


Methodology: a) All labs for 'Adequacy of Dialysis', 'Nutrition', 'Osteodystrophy', 'Anemia' and 'Diabetes' based on last value of month; b) BP's and #L processed are average of all values for month; c) Access data takes last access of month; d) Values for SGA and 'Infection Control' use most recent result.

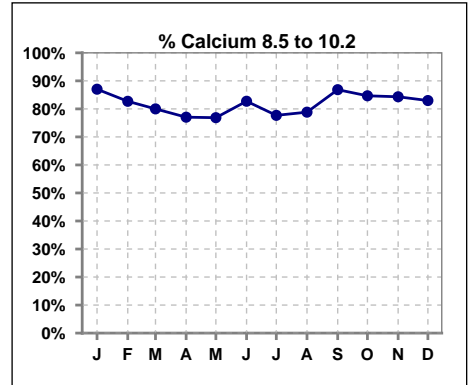
Lab methodology for PTH changed January 2012

**III. OSTEODYSTROPHY - CONT.**

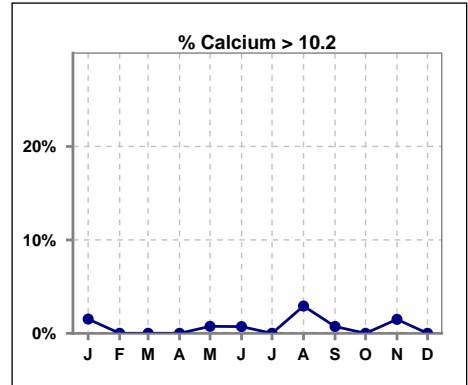
	Jan	Feb	Mar	Apr	May	Jun	Jul	Aug	Sep	Oct	Nov	Dec
# Calcium	131	133	135	135	134	139	139	137	137	137	134	141
# Calcium < 8.5	15	23	27	31	30	23	31	25	17	21	19	24
Pop. Mean	9.2	9.1	8.9	9.0	9.0	9.1	9.0	9.1	9.2	9.2	9.1	9.0
Std. Deviation	0.64	0.62	0.73	0.66	0.72	0.66	0.72	0.69	0.67	0.68	0.70	0.69
<b>% Calcium &lt; 8.5</b>	<b>11%</b>	<b>17%</b>	<b>20%</b>	<b>23%</b>	<b>22%</b>	<b>17%</b>	<b>22%</b>	<b>18%</b>	<b>12%</b>	<b>15%</b>	<b>14%</b>	<b>17%</b>



	Jan	Feb	Mar	Apr	May	Jun	Jul	Aug	Sep	Oct	Nov	Dec
# Calcium	131	133	135	135	134	139	139	137	137	137	134	141
# Calcium 8.5 to 10.2	114	110	108	104	103	115	108	108	119	116	113	117
Pop. Mean	9.2	9.1	8.9	9.0	9.0	9.1	9.0	9.1	9.2	9.2	9.1	9.0
Std. Deviation	0.64	0.62	0.73	0.66	0.72	0.66	0.72	0.69	0.67	0.68	0.70	0.69
<b>% Calcium 8.5 to 10.2</b>	<b>87%</b>	<b>83%</b>	<b>80%</b>	<b>77%</b>	<b>77%</b>	<b>83%</b>	<b>78%</b>	<b>79%</b>	<b>87%</b>	<b>85%</b>	<b>84%</b>	<b>83%</b>



	Jan	Feb	Mar	Apr	May	Jun	Jul	Aug	Sep	Oct	Nov	Dec
# Calcium	131	133	135	135	134	139	139	137	137	137	134	141
# Calcium > 10.2	2	0	0	0	1	1	0	4	1	0	2	0
Pop. Mean	9.2	9.1	8.9	9.0	9.0	9.1	9.0	9.1	9.2	9.2	9.1	9.0
Std. Deviation	0.64	0.62	0.73	0.66	0.72	0.66	0.72	0.69	0.67	0.68	0.70	0.69
<b>% Calcium &gt; 10.2</b>	<b>2%</b>	<b>0%</b>	<b>0%</b>	<b>0%</b>	<b>1%</b>	<b>1%</b>	<b>0%</b>	<b>3%</b>	<b>1%</b>	<b>0%</b>	<b>1%</b>	<b>0%</b>

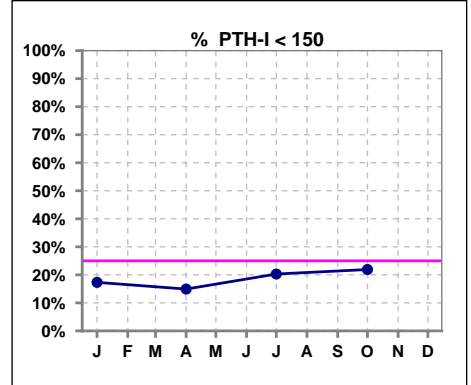


Methodology: a) All labs for 'Adequacy of Dialysis', 'Nutrition', 'Osteodystrophy', 'Anemia' and 'Diabetes' based on last value of month; b) BP's and #L processed are average of all values for month; c) Access data takes last access of month; d) Values for SGA and 'Infection Control' use most recent result.

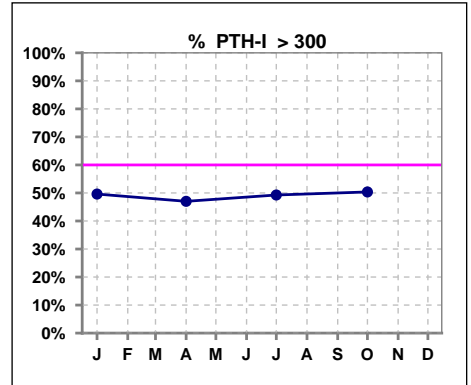
Lab methodology for PTH changed January 2012

**III. OSTEODYSTROPHY - CONT.**

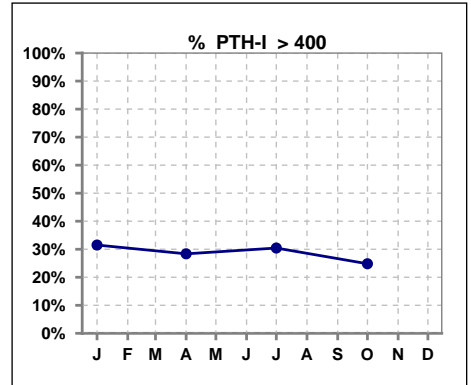
	Jan	Feb	Mar	Apr	May	Jun	Jul	Aug	Sep	Oct	Nov	Dec
# PTH-I	127			134			138			137		
# PTH-I < 150	22			20			28			30		
Pop. Mean	380			345			363			351		
Std. Deviation	315			260			287			286		
% PTH-I < 150	17%			15%			20%			22%		



	Jan	Feb	Mar	Apr	May	Jun	Jul	Aug	Sep	Oct	Nov	Dec
# PTH-I	127			134			138			137		
# PTH-I > 300	63			63			68			69		
Pop. Mean	380			345			363			351		
Std. Deviation	315			260			287			286		
% PTH-I > 300	50%			47%			49%			50%		



	Jan	Feb	Mar	Apr	May	Jun	Jul	Aug	Sep	Oct	Nov	Dec
# PTH-I	127			134			138			137		
# PTH-I > 400	40			38			42			34		
Pop. Mean	380			345			363			351		
Std. Deviation	315			260			287			286		
% PTH-I > 400	31%			28%			30%			25%		

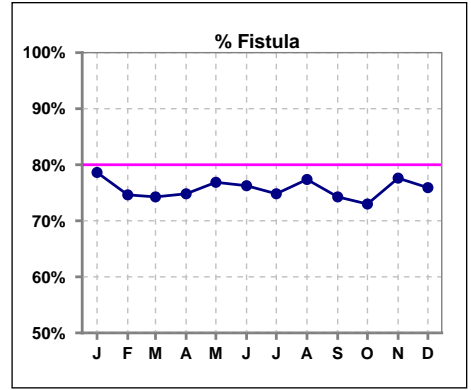


Methodology: a) All labs for 'Adequacy of Dialysis', 'Nutrition', 'Osteodystrophy', 'Anemia' and 'Diabetes' based on last value of month; b) BP's and #L processed are average of all values for month; c) Access data takes last access of month; d) Values for SGA and 'Infection Control' use most recent result.

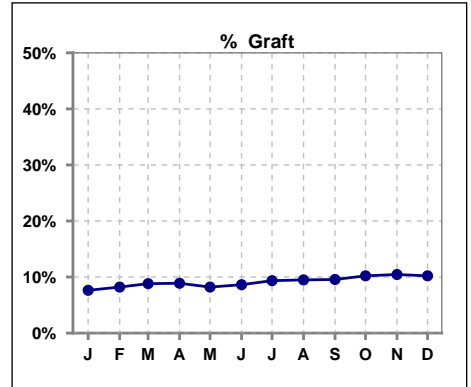


**IV. ACCESS**

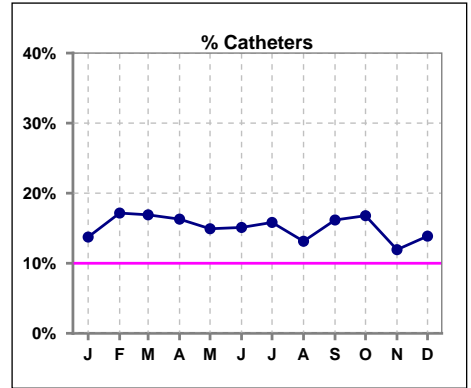
	Jan	Feb	Mar	Apr	May	Jun	Jul	Aug	Sep	Oct	Nov	Dec
<b># Access</b>	131	134	136	135	134	139	139	137	136	137	134	137
<b># Fistula</b>	103	100	101	101	103	106	104	106	101	100	104	104
<b>% Fistula</b>	79%	75%	74%	75%	77%	76%	75%	77%	74%	73%	78%	76%



	Jan	Feb	Mar	Apr	May	Jun	Jul	Aug	Sep	Oct	Nov	Dec
<b># Access</b>	131	134	136	135	134	139	139	137	136	137	134	137
<b># Graft</b>	10	11	12	12	11	12	13	13	13	14	14	14
<b>% Graft</b>	8%	8%	9%	9%	8%	9%	9%	9%	10%	10%	10%	10%



	Jan	Feb	Mar	Apr	May	Jun	Jul	Aug	Sep	Oct	Nov	Dec
<b># Access</b>	131	134	136	135	134	139	139	137	136	137	134	137
<b># Catheters</b>	18	23	23	22	20	21	22	18	22	23	16	19
<b>% Catheters</b>	14%	17%	17%	16%	15%	15%	16%	13%	16%	17%	12%	14%



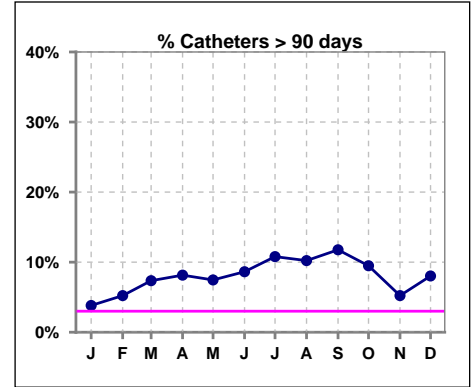
Methodology: a) All labs for 'Adequacy of Dialysis', 'Nutrition', 'Osteodystrophy', 'Anemia' and 'Diabetes' based on last value of month; b) BP's and #L processed are average of all values for month; c) Access data takes last access of month; d) Values for SGA and 'Infection Control' use most recent result.

**IV. ACCESS - CONT.**

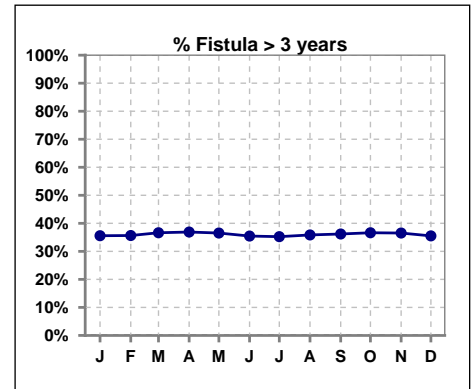
**Catheters > 90 days**

	Jan	Feb	Mar	Apr	May	Jun	Jul	Aug	Sep	Oct	Nov	Dec
# Access	131	134	136	135	134	139	139	137	136	137	134	137
# Catheters	5	7	10	11	10	12	15	14	16	13	7	11
<b>% Catheters</b>	<b>4%</b>	<b>5%</b>	<b>7%</b>	<b>8%</b>	<b>7%</b>	<b>9%</b>	<b>11%</b>	<b>10%</b>	<b>12%</b>	<b>9%</b>	<b>5%</b>	<b>8%</b>

Definition: Catheter in use on last treatment of the month



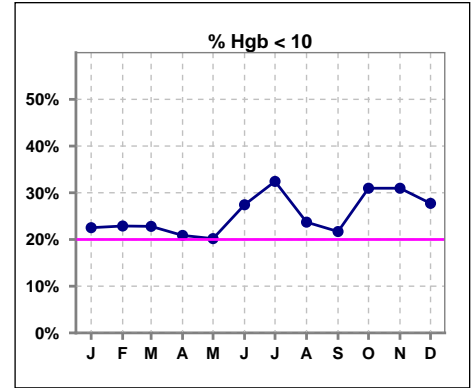
	Jan	Feb	Mar	Apr	May	Jun	Jul	Aug	Sep	Oct	Nov	Dec
# Fistula	104	101	101	103	104	110	105	106	105	101	104	107
# Fistula > 3 yrs	37	36	37	38	38	39	37	38	38	37	38	38
<b>% Fistula &gt; 3 yrs</b>	<b>36%</b>	<b>36%</b>	<b>37%</b>	<b>37%</b>	<b>37%</b>	<b>35%</b>	<b>35%</b>	<b>36%</b>	<b>36%</b>	<b>37%</b>	<b>37%</b>	<b>36%</b>



**V. ANEMIA**

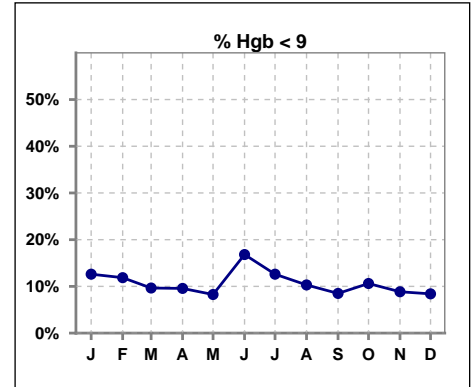
	Jan	Feb	Mar	Apr	May	Jun	Jul	Aug	Sep	Oct	Nov	Dec
# Hgb	111	118	114	115	109	113	111	97	106	113	113	119
# Hgb < 10	25	27	26	24	22	31	36	23	23	35	35	33
Pop. Mean	10.6	10.7	10.6	10.6	10.6	10.5	10.5	10.6	10.5	10.4	10.4	10.5
Std. Deviation	1.2	1.3	1.1	1.0	1.0	1.3	1.3	1.1	1.0	1.1	1.0	1.1
<b>% Hgb &lt; 10</b>	<b>23%</b>	<b>23%</b>	<b>23%</b>	<b>21%</b>	<b>20%</b>	<b>27%</b>	<b>32%</b>	<b>24%</b>	<b>22%</b>	<b>31%</b>	<b>31%</b>	<b>28%</b>

Note: Excludes patients who received no ESA in month.



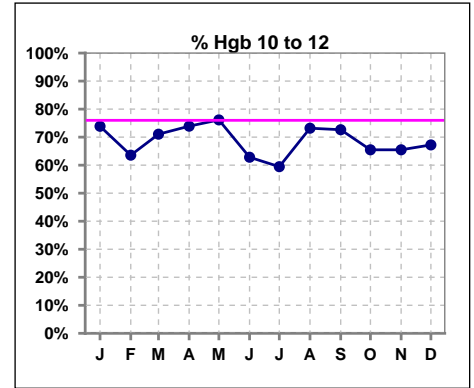
	Jan	Feb	Mar	Apr	May	Jun	Jul	Aug	Sep	Oct	Nov	Dec
# Hgb	111	118	114	115	109	113	111	97	106	113	113	119
# Hgb < 9	14	14	11	11	9	19	14	10	9	12	10	10
Pop. Mean	10.6	10.7	10.6	10.6	10.6	10.5	10.5	10.6	10.5	10.4	10.4	10.5
Std. Deviation	1.2	1.3	1.1	1.0	1.0	1.3	1.3	1.1	1.0	1.1	1.0	1.1
<b>% Hgb &lt; 9</b>	<b>13%</b>	<b>12%</b>	<b>10%</b>	<b>10%</b>	<b>8%</b>	<b>17%</b>	<b>13%</b>	<b>10%</b>	<b>8%</b>	<b>11%</b>	<b>9%</b>	<b>8%</b>

Note: Excludes patients who received no ESA in month.



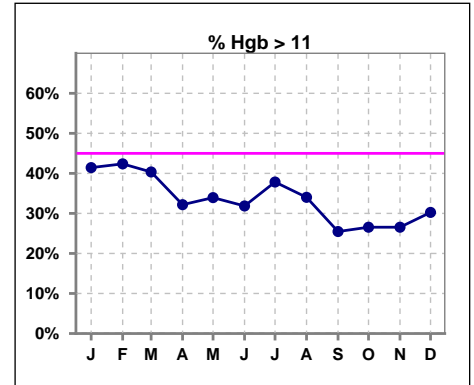
	Jan	Feb	Mar	Apr	May	Jun	Jul	Aug	Sep	Oct	Nov	Dec
# Hgb	111	118	114	115	109	113	111	97	106	113	113	119
# Hgb 10 to 12	82	75	81	85	83	71	66	71	77	74	74	80
Pop. Mean	10.6	10.7	10.6	10.6	10.6	10.5	10.5	10.6	10.5	10.4	10.4	10.5
Std. Deviation	1.2	1.3	1.1	1.0	1.0	1.3	1.3	1.1	1.0	1.1	1.0	1.1
<b>% Hgb 10 to 12</b>	<b>74%</b>	<b>64%</b>	<b>71%</b>	<b>74%</b>	<b>76%</b>	<b>63%</b>	<b>59%</b>	<b>73%</b>	<b>73%</b>	<b>65%</b>	<b>65%</b>	<b>67%</b>

Note: Excludes patients who received no ESA in month.



	Jan	Feb	Mar	Apr	May	Jun	Jul	Aug	Sep	Oct	Nov	Dec
# Hgb	111	118	114	115	109	113	111	97	106	113	113	119
# Hgb > 11	46	50	46	37	37	36	42	33	27	30	30	36
Pop. Mean	10.6	10.7	10.6	10.6	10.6	10.5	10.5	10.6	10.5	10.4	10.4	10.5
Std. Deviation	1.2	1.3	1.1	1.0	1.0	1.3	1.3	1.1	1.0	1.1	1.0	1.1
<b>% Hgb &gt; 11</b>	<b>41%</b>	<b>42%</b>	<b>40%</b>	<b>32%</b>	<b>34%</b>	<b>32%</b>	<b>38%</b>	<b>34%</b>	<b>25%</b>	<b>27%</b>	<b>27%</b>	<b>30%</b>

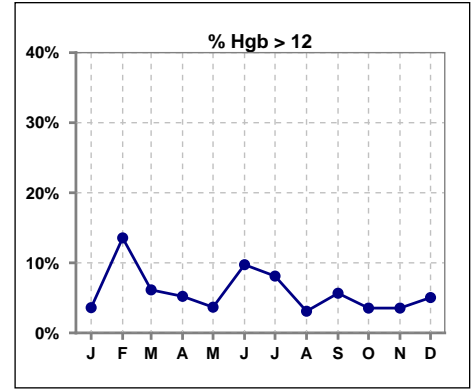
Note: Excludes patients who received no ESA in month.



**V. ANEMIA - CONT.**

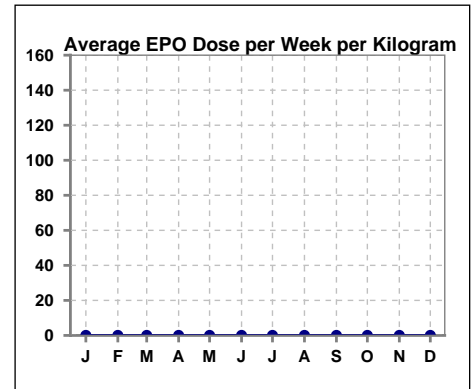
	Jan	Feb	Mar	Apr	May	Jun	Jul	Aug	Sep	Oct	Nov	Dec
# Hgb	111	118	114	115	109	113	111	97	106	113	113	119
# Hgb > 12	4	16	7	6	4	11	9	3	6	4	4	6
Pop. Mean	10.6	10.7	10.6	10.6	10.6	10.5	10.5	10.6	10.5	10.4	10.4	10.5
Std. Deviation	1.2	1.3	1.1	1.0	1.0	1.3	1.3	1.1	1.0	1.1	1.0	1.1
% Hgb > 12	4%	14%	6%	5%	4%	10%	8%	3%	6%	4%	4%	5%

Note: Excludes patients who received no ESA in month.



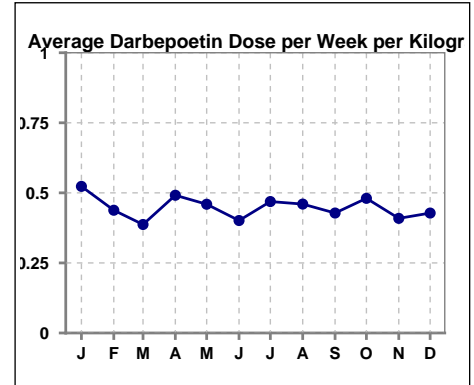
**Average EPO Dose per Week per Kilogram**

	Jan	Feb	Mar	Apr	May	Jun	Jul	Aug	Sep	Oct	Nov	Dec
# Average EPO	0	0	0	0	0	0	0	0	0	0	0	0



**Average Darbeopetin Dose per Week per Kilogram**

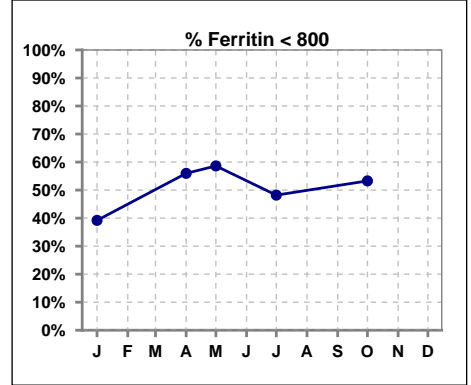
	Jan	Feb	Mar	Apr	May	Jun	Jul	Aug	Sep	Oct	Nov	Dec
# Average Darbeopetin	.5	.4	.4	.5	.5	.4	.5	.5	.4	.5	.4	.4



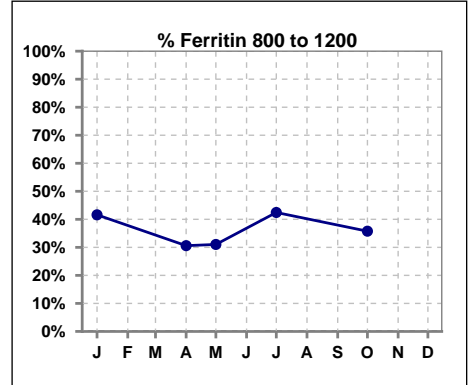
**V. ANEMIA - CONT.**

**Iron Profile**

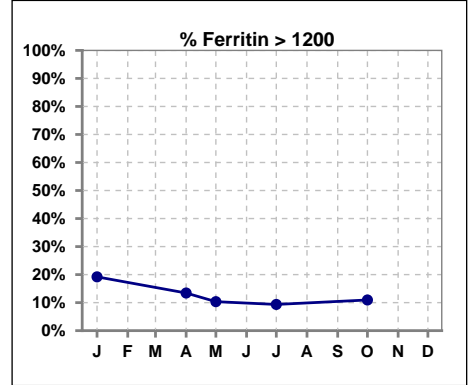
	Jan	Feb	Mar	Apr	May	Jun	Jul	Aug	Sep	Oct	Nov	Dec
# Ferritin	125			134	29		139			137		
# Ferritin < 800	49			75	17		67			73		
Pop. Mean	880			812	749		820			779		
Std. Deviation	503			475	397		450			397		
<b>% Ferritin &lt; 800</b>	<b>39%</b>			<b>56%</b>	<b>59%</b>		<b>48%</b>			<b>53%</b>		



	Jan	Feb	Mar	Apr	May	Jun	Jul	Aug	Sep	Oct	Nov	Dec
# Ferritin	125			134	29		139			137		
# Ferritin 800 to 1200	52			41	9		59			49		
Pop. Mean	880			812	749		820			779		
Std. Deviation	503			475	397		450			397		
<b>% Ferritin 800 to 1200</b>	<b>42%</b>			<b>31%</b>	<b>31%</b>		<b>42%</b>			<b>36%</b>		

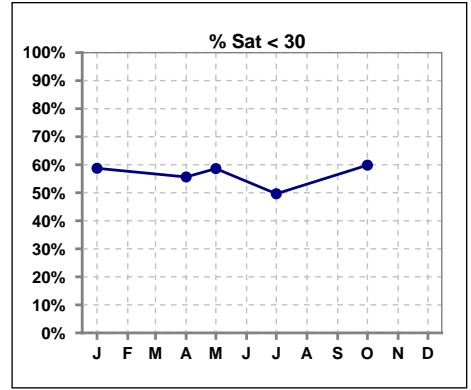


	Jan	Feb	Mar	Apr	May	Jun	Jul	Aug	Sep	Oct	Nov	Dec
# Ferritin	125			134	29		139			137		
# Ferritin > 1200	24			18	3		13			15		
Pop. Mean	880			812	749		820			779		
Std. Deviation	503			475	397		450			397		
<b>% Ferritin &gt; 1200</b>	<b>19%</b>			<b>13%</b>	<b>10%</b>		<b>9%</b>			<b>11%</b>		

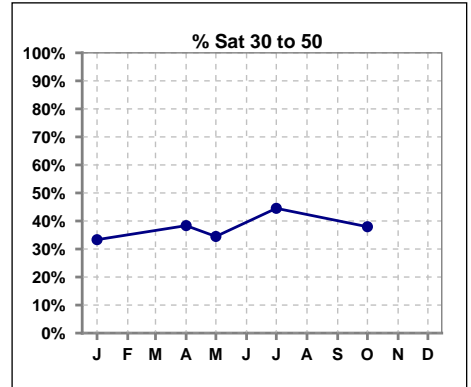


**V. ANEMIA - CONT.**

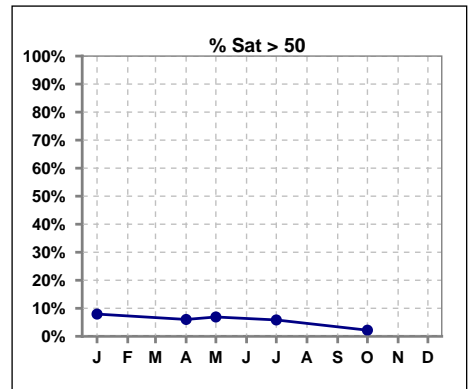
	Jan	Feb	Mar	Apr	May	Jun	Jul	Aug	Sep	Oct	Nov	Dec
# % Sat	126			133	29		137			137		
# % Sat < 30	74			74	17		68			82		
Pop. Mean	30			29	30		31			28		
Std. Deviation	13			12	13		12			12		
<b>% % Sat &lt; 30</b>	<b>59%</b>			<b>56%</b>	<b>59%</b>		<b>50%</b>			<b>60%</b>		



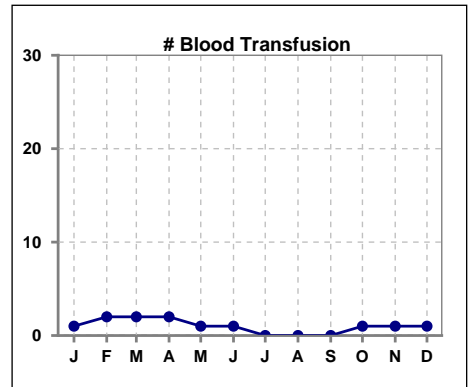
	Jan	Feb	Mar	Apr	May	Jun	Jul	Aug	Sep	Oct	Nov	Dec
# % Sat	126			133	29		137			137		
# % Sat 30 to 50	42			51	10		61			52		
Pop. Mean	30			29	30		31			28		
Std. Deviation	13			12	13		12			12		
<b>% % Sat 30 to 50</b>	<b>33%</b>			<b>38%</b>	<b>34%</b>		<b>45%</b>			<b>38%</b>		



	Jan	Feb	Mar	Apr	May	Jun	Jul	Aug	Sep	Oct	Nov	Dec
# % Sat	126			133	29		137			137		
# % Sat > 50	10			8	2		8			3		
Pop. Mean	30			29	30		31			28		
Std. Deviation	13			12	13		12			12		
<b>% % Sat &gt; 50</b>	<b>8%</b>			<b>6%</b>	<b>7%</b>		<b>6%</b>			<b>2%</b>		



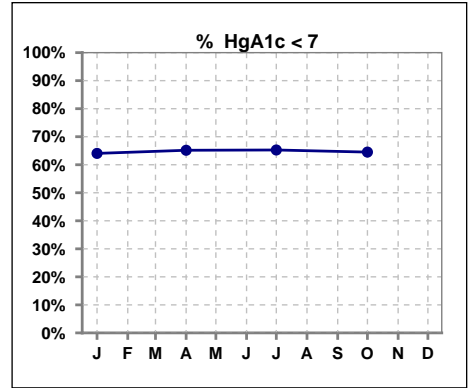
	Jan	Feb	Mar	Apr	May	Jun	Jul	Aug	Sep	Oct	Nov	Dec
# Patient	132	134	136	138	135	139	140	138	137	137	135	144
# Blood Transfusion	1	2	2	2	1	1	0	0	0	1	1	1



Methodology: a) All labs for 'Adequacy of Dialysis', 'Nutrition', 'Osteodystrophy', 'Anemia' and 'Diabetes' based on last value of month; b) BP's and #L processed are average of all values for month; c) Access data takes last access of month; d) Values for SGA and 'Infection Control' use most recent result.

**VI. Diabetes**

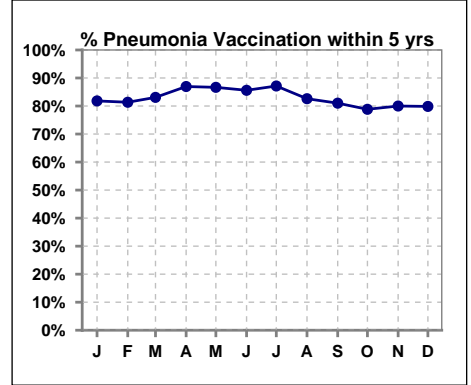
	Jan	Feb	Mar	Apr	May	Jun	Jul	Aug	Sep	Oct	Nov	Dec
# HgA1c	89			89			95			93		
# HgA1c < 7	57			58			62			60		
Pop. Mean	6.7			6.7			6.6			6.8		
Std. Deviation	1.37			1.43			1.35			1.51		
<b>% HgA1c &lt; 7</b>	<b>64%</b>			<b>65%</b>			<b>65%</b>			<b>65%</b>		



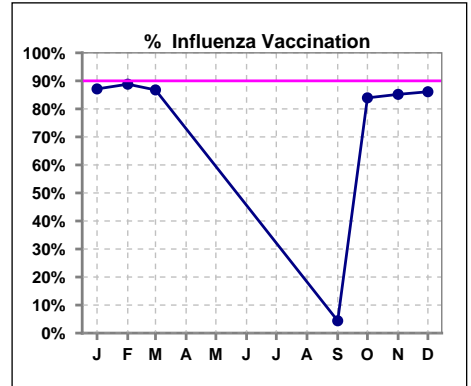
**VII. Infection Control**

**Pneumonia vaccination within the past five years**

	Jan	Feb	Mar	Apr	May	Jun	Jul	Aug	Sep	Oct	Nov	Dec
<b># Patient</b>	132	134	136	138	135	139	140	138	137	137	135	144
<b># Pneumonia</b>	108	109	113	120	117	119	122	114	111	108	108	115
<b>% Pneumonia</b>	82%	81%	83%	87%	87%	86%	87%	83%	81%	79%	80%	80%



	Jan	Feb	Mar	Apr	May	Jun	Jul	Aug	Sep	Oct	Nov	Dec
<b># Patient</b>	132	134	136						137	137	135	144
<b># Influenza</b>	115	119	118						6	115	115	124
<b>% Influenza</b>	87%	89%	87%						4%	84%	85%	86%

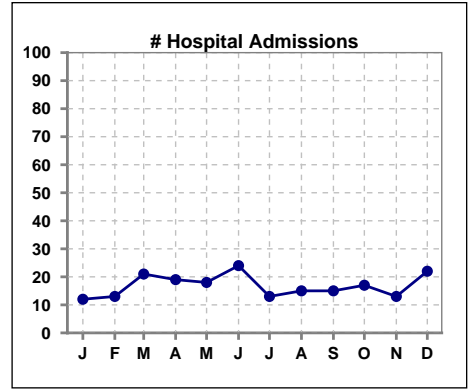


Methodology: a) All labs for 'Adequacy of Dialysis', 'Nutrition', 'Osteodystrophy', 'Anemia' and 'Diabetes' based on last value of month; b) BP's and #L processed are average of all values for month; c) Access data takes last access of month; d) Values for SGA and 'Infection Control' use most recent result.

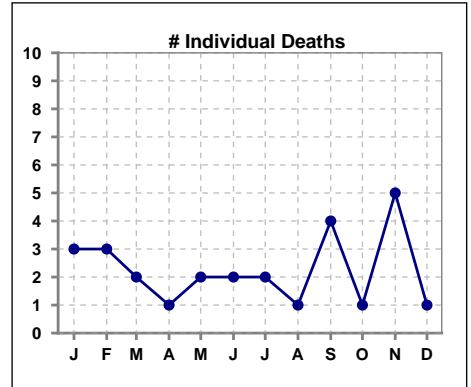


**VIII. Outcome measures**

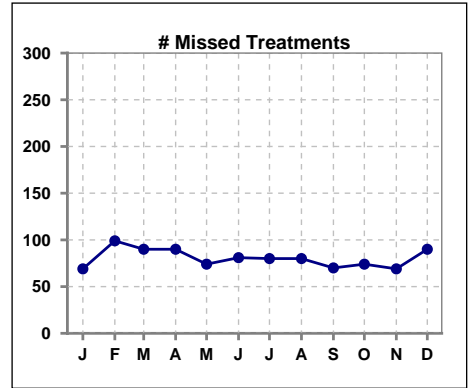
	Jan	Feb	Mar	Apr	May	Jun	Jul	Aug	Sep	Oct	Nov	Dec
<b># Patient</b>	132	134	136	138	135	139	140	138	137	137	135	144
<b># Hospital Admissions</b>	12	13	21	19	18	24	13	15	15	17	13	22



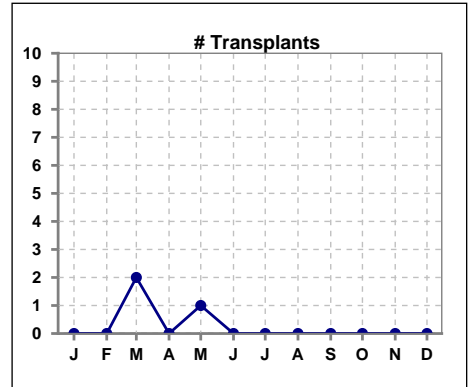
	Jan	Feb	Mar	Apr	May	Jun	Jul	Aug	Sep	Oct	Nov	Dec
<b># Patient</b>	132	134	136	138	135	139	140	138	137	137	135	144
<b># Individual Deaths</b>	3	3	2	1	2	2	2	1	4	1	5	1



	Jan	Feb	Mar	Apr	May	Jun	Jul	Aug	Sep	Oct	Nov	Dec
<b># Patient</b>	132	134	136	138	135	139	140	138	137	137	135	144
<b># Missed Treatments</b>	69	99	90	90	74	81	80	80	70	74	69	90



	Jan	Feb	Mar	Apr	May	Jun	Jul	Aug	Sep	Oct	Nov	Dec
<b># Patient</b>	132	134	136	138	135	139	140	138	137	137	135	144
<b># Transplants</b>	0	0	2	0	1	0	0	0	0	0	0	0



Methodology: a) All labs for 'Adequacy of Dialysis', 'Nutrition', 'Osteodystrophy', 'Anemia' and 'Diabetes' based on last value of month; b) BP's and #L processed are average of all values for month; c) Access data takes last access of month; d) Values for SGA and 'Infection Control' use most recent result.