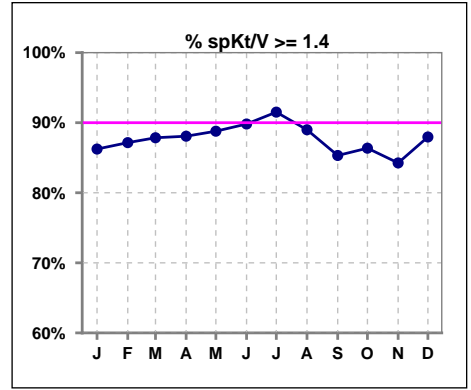
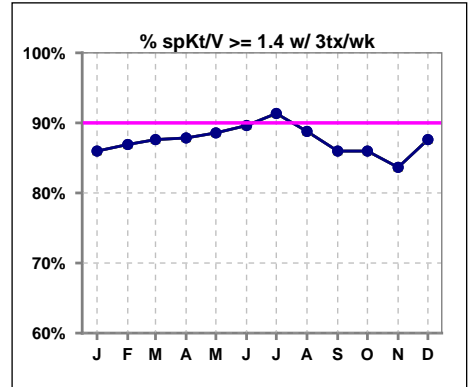


**I. ADEQUACY OF DIALYSIS**

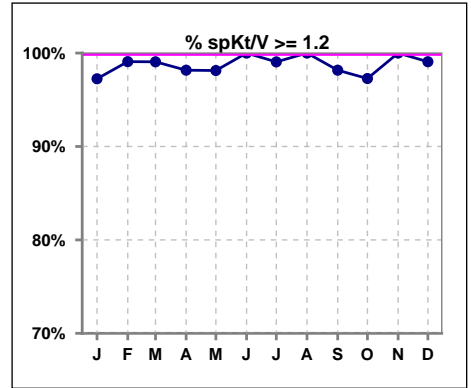
	Jan	Feb	Mar	Apr	May	Jun	Jul	Aug	Sep	Oct	Nov	Dec
# spKt/V	109	109	107	109	107	108	106	109	109	110	108	108
# spKt/V >= 1.4	94	95	94	96	95	97	97	97	93	95	91	95
Pop. Mean	1.69	1.69	1.73	1.68	1.69	1.74	1.73	1.75	1.68	1.67	1.66	1.67
Std. Deviation	0.30	0.33	0.33	0.28	0.29	0.32	0.30	0.31	0.34	0.31	0.27	0.27
% spKt/V >= 1.4	86%	87%	88%	88%	89%	90%	92%	89%	85%	86%	84%	88%



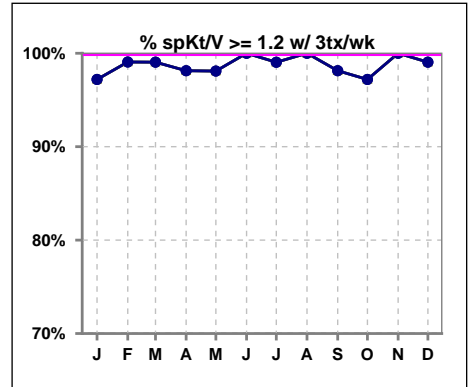
	Jan	Feb	Mar	Apr	May	Jun	Jul	Aug	Sep	Oct	Nov	Dec
# spKt/V w/ 3tx/wk	107	107	105	107	105	106	104	107	107	107	104	105
# spKt/V >= 1.4 w/3tx/wk	92	93	92	94	93	95	95	95	92	92	87	92
Pop. Mean	1.69	1.69	1.72	1.68	1.69	1.74	1.72	1.74	1.69	1.66	1.65	1.66
Std. Deviation	0.30	0.33	0.32	0.28	0.29	0.33	0.29	0.31	0.34	0.30	0.27	0.27
% >= 1.4 w/3tx/wk	86%	87%	88%	88%	89%	90%	91%	89%	86%	86%	84%	88%



	Jan	Feb	Mar	Apr	May	Jun	Jul	Aug	Sep	Oct	Nov	Dec
# spKt/V	109	109	107	109	107	108	106	109	109	110	108	108
# spKt/V >= 1.2	106	108	106	107	105	108	105	109	107	107	108	107
Pop. Mean	1.69	1.69	1.73	1.68	1.69	1.74	1.73	1.75	1.68	1.67	1.66	1.67
Std. Deviation	0.30	0.33	0.33	0.28	0.29	0.32	0.30	0.31	0.34	0.31	0.27	0.27
% spKt/V >= 1.2	97%	99%	99%	98%	98%	100%	99%	100%	98%	97%	100%	99%



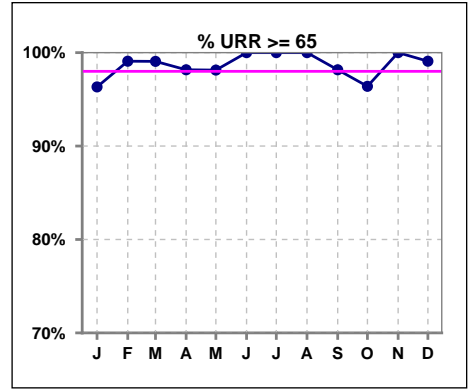
	Jan	Feb	Mar	Apr	May	Jun	Jul	Aug	Sep	Oct	Nov	Dec
# spKt/V w/ 3tx/wk	107	107	105	107	105	106	104	107	107	107	104	105
# spKt/V >= 1.2 w/3tx/wk	104	106	104	105	103	106	103	107	105	104	104	104
Pop. Mean	1.69	1.69	1.72	1.68	1.69	1.74	1.72	1.74	1.69	1.66	1.65	1.66
Std. Deviation	0.30	0.33	0.32	0.28	0.29	0.33	0.29	0.31	0.34	0.30	0.27	0.27
% >= 1.2 w/3tx/wk	97%	99%	99%	98%	98%	100%	99%	100%	98%	97%	100%	99%



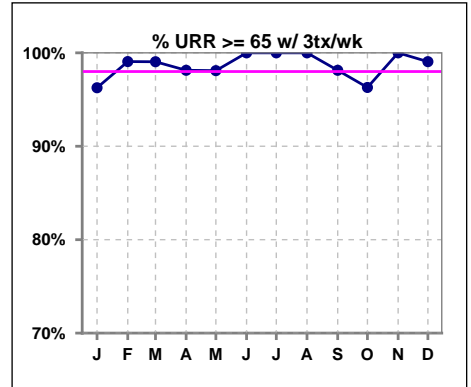
Methodology: a) All labs for 'Adequacy of Dialysis', 'Nutrition', 'Osteodystrophy', 'Anemia' and 'Diabetes' based on last value of month; b) BP's and #L processed are average of all values for month; c) Access data takes last access of month; d) Values for SGA and 'Infection Control' use most recent result.

**I. ADEQUACY OF DIALYSIS - CONT.**

	Jan	Feb	Mar	Apr	May	Jun	Jul	Aug	Sep	Oct	Nov	Dec
# URR	109	109	107	109	107	108	106	109	109	111	109	109
# URR >= 65	105	108	106	107	105	108	106	109	107	107	109	108
Pop. Mean	76	76	77	76	77	77	77	78	76	76	76	76
Std. Deviation	5.71	5.97	5.95	5.35	5.49	5.43	5.28	5.23	7.33	6.73	5.25	5.18
% URR >= 65	96%	99%	99%	98%	98%	100%	100%	100%	98%	96%	100%	99%



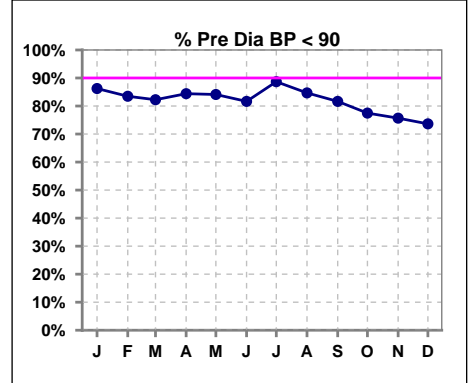
	Jan	Feb	Mar	Apr	May	Jun	Jul	Aug	Sep	Oct	Nov	Dec
# URR w/ 3tx/wk	107	107	105	107	105	106	104	107	107	108	105	106
# URR >=65 w/ 3tx/wk	103	106	104	105	103	106	104	107	105	104	105	105
Pop. Mean	76	76	77	76	76	77	77	77	76	76	76	76
Std. Deviation	5.70	6.00	5.91	5.34	5.48	5.47	5.27	5.24	7.37	6.71	5.25	5.10
% URR >=65 w/ 3tx/wk	96%	99%	99%	98%	98%	100%	100%	100%	98%	96%	100%	99%



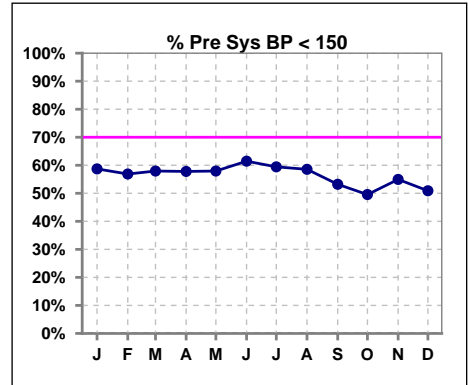
**I. ADEQUACY OF DIALYSIS - CONT.**

**Blood Pressure Control (Pre)**

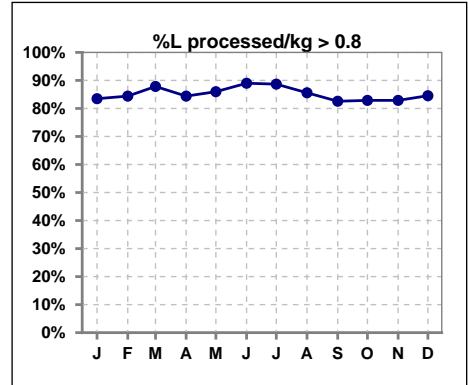
	Jan	Feb	Mar	Apr	May	Jun	Jul	Aug	Sep	Oct	Nov	Dec
# Pre Dia BP	109	109	107	109	107	109	106	111	109	111	111	110
# Pre Dia BP < 90	94	91	88	92	90	89	94	94	89	86	84	81
Pop. Mean	79	80	80	80	79	79	78	79	80	81	80	81
Std. Deviation	11.3	11.1	10.8	10.3	11.3	11.0	9.3	9.5	10.9	11.1	11.6	11.6
<b>% Pre Dia BP &lt; 90</b>	<b>86%</b>	<b>83%</b>	<b>82%</b>	<b>84%</b>	<b>84%</b>	<b>82%</b>	<b>89%</b>	<b>85%</b>	<b>82%</b>	<b>77%</b>	<b>76%</b>	<b>74%</b>



	Jan	Feb	Mar	Apr	May	Jun	Jul	Aug	Sep	Oct	Nov	Dec
# Pre Sys BP	109	109	107	109	107	109	106	111	109	111	111	110
# Pre Sys BP < 150	64	62	62	63	62	67	63	65	58	55	61	56
Pop. Mean	146	148	147	147	146	146	146	147	148	148	147	148
Std. Deviation	20.3	20.9	18.8	18.9	19.3	19.1	19.0	19.8	18.3	19.1	18.6	18.0
<b>%Pre Sys BP &lt;150</b>	<b>59%</b>	<b>57%</b>	<b>58%</b>	<b>58%</b>	<b>58%</b>	<b>61%</b>	<b>59%</b>	<b>59%</b>	<b>53%</b>	<b>50%</b>	<b>55%</b>	<b>51%</b>



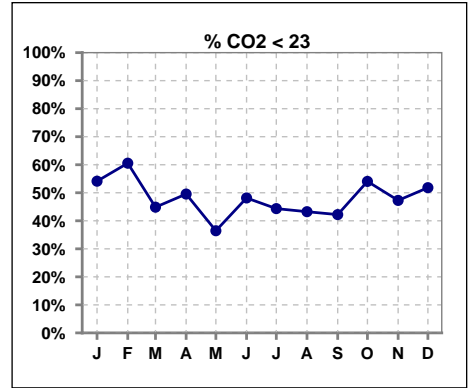
	Jan	Feb	Mar	Apr	May	Jun	Jul	Aug	Sep	Oct	Nov	Dec
# L processed/kg	109	109	107	109	107	109	106	111	109	111	111	110
# L processed/kg>0.8	91	92	94	92	92	97	94	95	90	92	92	93
Pop. Mean	1	1	1	1	1	1	1	1	1	1	1	1
Std. Deviation	0.3	0.3	0.3	0.2	0.2	0.2	0.2	0.2	0.2	0.2	0.2	0.2
<b>% L processed/kg&gt;0.8</b>	<b>83%</b>	<b>84%</b>	<b>88%</b>	<b>84%</b>	<b>86%</b>	<b>89%</b>	<b>89%</b>	<b>86%</b>	<b>83%</b>	<b>83%</b>	<b>83%</b>	<b>85%</b>



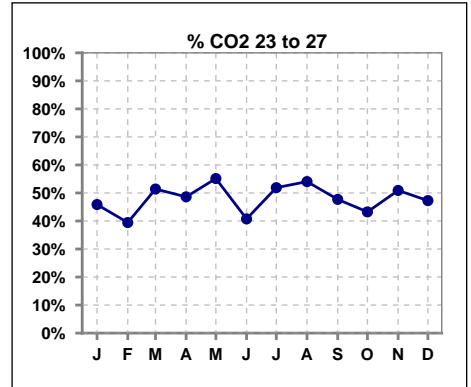
Methodology: a) All labs for 'Adequacy of Dialysis', 'Nutrition', 'Osteodystrophy', 'Anemia' and 'Diabetes' based on last value of month; b) BP's and #L processed are average of all values for month; c) Access data takes last access of month; d) Values for SGA and 'Infection Control' use most recent result.

**I. ADEQUACY OF DIALYSIS - CONT.**

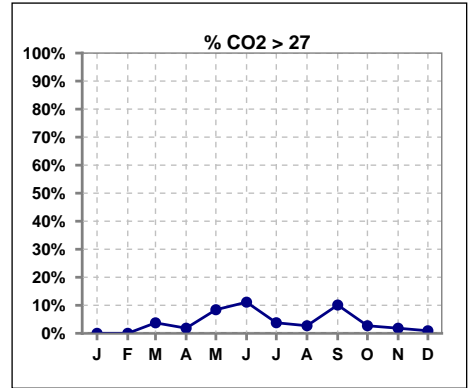
	Jan	Feb	Mar	Apr	May	Jun	Jul	Aug	Sep	Oct	Nov	Dec
# CO2	109	109	107	109	107	108	106	111	109	111	110	110
# CO2 < 23	59	66	48	54	39	52	47	48	46	60	52	57
Pop. Mean	22	21	23	22	23	23	23	23	23	22	23	22
Std. Deviation	2.72	3.05	2.74	2.78	2.96	3.63	3.10	2.58	3.78	2.60	2.51	2.20
<b>% CO2 &lt; 23</b>	<b>54%</b>	<b>61%</b>	<b>45%</b>	<b>50%</b>	<b>36%</b>	<b>48%</b>	<b>44%</b>	<b>43%</b>	<b>42%</b>	<b>54%</b>	<b>47%</b>	<b>52%</b>



	Jan	Feb	Mar	Apr	May	Jun	Jul	Aug	Sep	Oct	Nov	Dec
# CO2	109	109	107	109	107	108	106	111	109	111	110	110
# CO2 23 to 27	50	43	55	53	59	44	55	60	52	48	56	52
Pop. Mean	22	21	23	22	23	23	23	23	23	22	23	22
Std. Deviation	2.72	3.05	2.74	2.78	2.96	3.63	3.10	2.58	3.78	2.60	2.51	2.20
<b>% CO2 23 to 27</b>	<b>46%</b>	<b>39%</b>	<b>51%</b>	<b>49%</b>	<b>55%</b>	<b>41%</b>	<b>52%</b>	<b>54%</b>	<b>48%</b>	<b>43%</b>	<b>51%</b>	<b>47%</b>



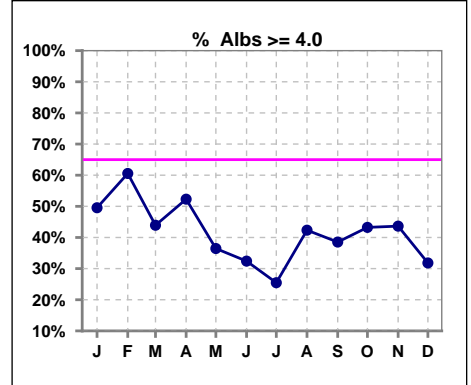
	Jan	Feb	Mar	Apr	May	Jun	Jul	Aug	Sep	Oct	Nov	Dec
# CO2	109	109	107	109	107	108	106	111	109	111	110	110
# CO2 > 27	0	0	4	2	9	12	4	3	11	3	2	1
Pop. Mean	22	21	23	22	23	23	23	23	23	22	23	22
Std. Deviation	2.72	3.05	2.74	2.78	2.96	3.63	3.10	2.58	3.78	2.60	2.51	2.20
<b>% CO2 &gt; 27</b>	<b>0%</b>	<b>0%</b>	<b>4%</b>	<b>2%</b>	<b>8%</b>	<b>11%</b>	<b>4%</b>	<b>3%</b>	<b>10%</b>	<b>3%</b>	<b>2%</b>	<b>1%</b>



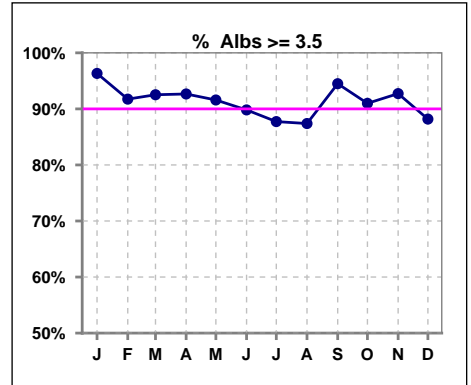
\*Albumin values use BCG method - as of July 2001

**II. NUTRITION**

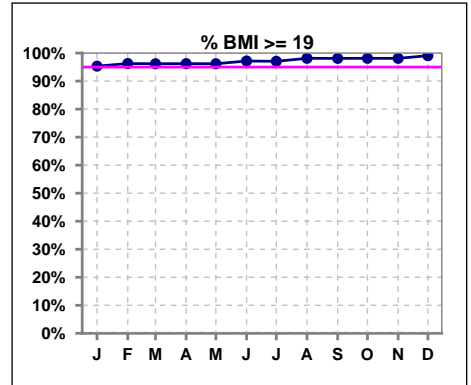
	Jan	Feb	Mar	Apr	May	Jun	Jul	Aug	Sep	Oct	Nov	Dec
# Albumin	109	109	107	109	107	108	106	111	109	111	110	110
# Albumin >= 4.0	54	66	47	57	39	35	27	47	42	48	48	35
Pop. Mean	4.0	4.0	3.9	4.0	3.9	3.8	3.8	3.9	3.9	3.9	3.9	3.8
Std. Deviation	0.32	0.38	0.32	0.34	0.36	0.31	0.35	0.33	0.31	0.32	0.36	0.36
% Alb >= 4.0	50%	61%	44%	52%	36%	32%	25%	42%	39%	43%	44%	32%



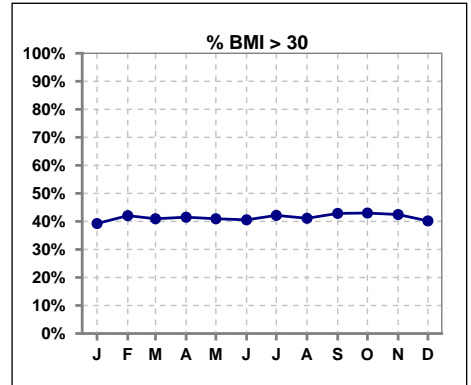
	Jan	Feb	Mar	Apr	May	Jun	Jul	Aug	Sep	Oct	Nov	Dec
# Albumin	109	109	107	109	107	108	106	111	109	111	110	110
# Albumin >= 3.5	105	100	99	101	98	97	93	97	103	101	102	97
Pop. Mean	4.0	4.0	3.9	4.0	3.9	3.8	3.8	3.9	3.9	3.9	3.9	3.8
Std. Deviation	0.32	0.38	0.32	0.34	0.36	0.31	0.35	0.33	0.31	0.32	0.36	0.36
% Alb >= 3.5	96%	92%	93%	93%	92%	90%	88%	87%	94%	91%	93%	88%



	Jan	Feb	Mar	Apr	May	Jun	Jul	Aug	Sep	Oct	Nov	Dec
# BMI	107	107	105	106	105	106	102	107	105	107	106	107
# BMI >= 19	102	103	101	102	101	103	99	105	103	105	104	106
Pop. Mean	30	30	30	30	30	29	29	30	30	30	29	30
Std. Deviation	7.7	8.0	7.9	7.8	8.0	8.0	7.6	7.9	8.1	7.3	7.4	8.1
% BMI >= 19	95%	96%	96%	96%	96%	97%	97%	98%	98%	98%	98%	99%



	Jan	Feb	Mar	Apr	May	Jun	Jul	Aug	Sep	Oct	Nov	Dec
# BMI	107	107	105	106	105	106	102	107	105	107	106	107
# BMI > 30	42	45	43	44	43	43	43	44	45	46	45	43
Pop. Mean	30	30	30	30	30	29	29	30	30	30	29	30
Std. Deviation	7.7	8.0	7.9	7.8	8.0	8.0	7.6	7.9	8.1	7.3	7.4	8.1
% BMI > 30	39%	42%	41%	42%	41%	41%	42%	41%	43%	43%	42%	40%

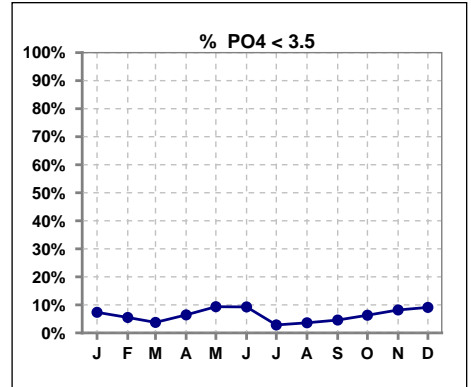


Methodology: a) All labs for 'Adequacy of Dialysis', 'Nutrition', 'Osteodystrophy', 'Anemia' and 'Diabetes' based on last value of month; b) BP's and #L processed are average of all values for month; c) Access data takes last access of month; d) Values for SGA and 'Infection Control' use most recent result.

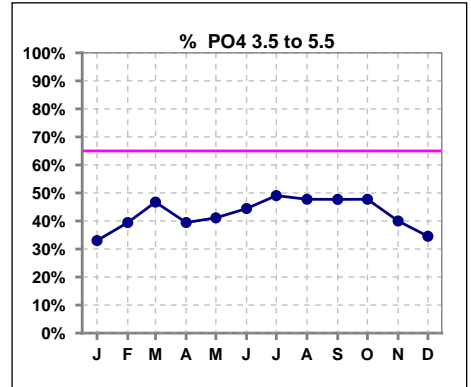
Lab methodology for PTH changed January 2012

**III. OSTEODYSTROPHY**

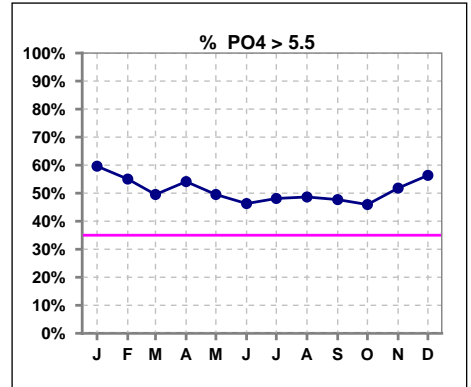
	Jan	Feb	Mar	Apr	May	Jun	Jul	Aug	Sep	Oct	Nov	Dec
# PO4	109	109	107	109	107	108	106	111	109	111	110	110
# PO4 < 3.5	8	6	4	7	10	10	3	4	5	7	9	10
Pop. Mean	6.2	6.2	6.1	6.0	5.8	5.8	5.9	5.9	5.7	5.8	5.8	6.0
Std. Deviation	2.03	2.23	2.11	2.01	1.89	2.08	1.96	1.98	1.84	1.99	1.76	1.93
% PO4 < 3.5	7%	6%	4%	6%	9%	9%	3%	4%	5%	6%	8%	9%



	Jan	Feb	Mar	Apr	May	Jun	Jul	Aug	Sep	Oct	Nov	Dec
# PO4	109	109	107	109	107	108	106	111	109	111	110	110
# PO4 3.5 to 5.5	36	43	50	43	44	48	52	53	52	53	44	38
Pop. Mean	6.2	6.2	6.1	6.0	5.8	5.8	5.9	5.9	5.7	5.8	5.8	6.0
Std. Deviation	2.03	2.23	2.11	2.01	1.89	2.08	1.96	1.98	1.84	1.99	1.76	1.93
% PO4 3.5 to 5.5	33%	39%	47%	39%	41%	44%	49%	48%	48%	48%	40%	35%



	Jan	Feb	Mar	Apr	May	Jun	Jul	Aug	Sep	Oct	Nov	Dec
# PO4	109	109	107	109	107	108	106	111	109	111	110	110
# PO4 > 5.5	65	60	53	59	53	50	51	54	52	51	57	62
Pop. Mean	6.2	6.2	6.1	6.0	5.8	5.8	5.9	5.9	5.7	5.8	5.8	6.0
Std. Deviation	2.03	2.23	2.11	2.01	1.89	2.08	1.96	1.98	1.84	1.99	1.76	1.93
% PO4 > 5.5	60%	55%	50%	54%	50%	46%	48%	49%	48%	46%	52%	56%

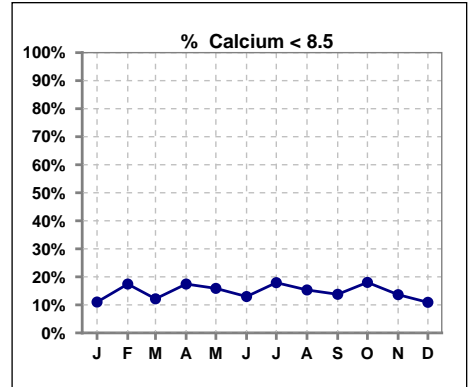


Methodology: a) All labs for 'Adequacy of Dialysis', 'Nutrition', 'Osteodystrophy', 'Anemia' and 'Diabetes' based on last value of month; b) BP's and #L processed are average of all values for month; c) Access data takes last access of month; d) Values for SGA and 'Infection Control' use most recent result.

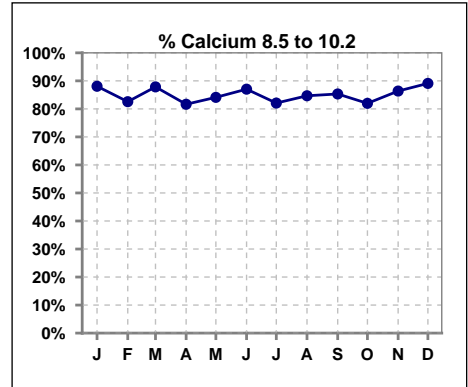
Lab methodology for PTH changed January 2012

**III. OSTEODYSTROPHY - CONT.**

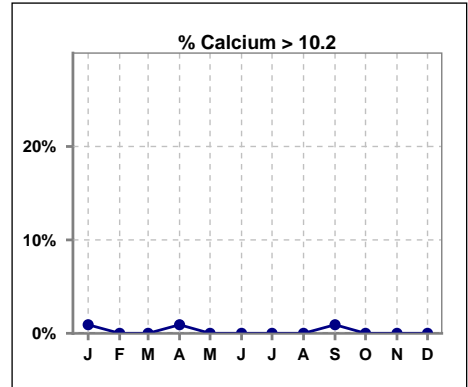
	Jan	Feb	Mar	Apr	May	Jun	Jul	Aug	Sep	Oct	Nov	Dec
# Calcium	109	109	107	109	107	108	106	111	109	111	110	110
# Calcium < 8.5	12	19	13	19	17	14	19	17	15	20	15	12
Pop. Mean	9.2	8.9	9.0	8.9	9.0	9.0	9.0	9.1	9.2	9.1	9.1	9.2
Std. Deviation	0.58	0.66	0.68	0.76	0.78	0.77	0.74	0.78	0.82	0.86	0.68	0.73
<b>% Calcium &lt; 8.5</b>	<b>11%</b>	<b>17%</b>	<b>12%</b>	<b>17%</b>	<b>16%</b>	<b>13%</b>	<b>18%</b>	<b>15%</b>	<b>14%</b>	<b>18%</b>	<b>14%</b>	<b>11%</b>



	Jan	Feb	Mar	Apr	May	Jun	Jul	Aug	Sep	Oct	Nov	Dec
# Calcium	109	109	107	109	107	108	106	111	109	111	110	110
# Calcium 8.5 to 10.2	96	90	94	89	90	94	87	94	93	91	95	98
Pop. Mean	9.2	8.9	9.0	8.9	9.0	9.0	9.0	9.1	9.2	9.1	9.1	9.2
Std. Deviation	0.58	0.66	0.68	0.76	0.78	0.77	0.74	0.78	0.82	0.86	0.68	0.73
<b>% Calcium 8.5 to 10.2</b>	<b>88%</b>	<b>83%</b>	<b>88%</b>	<b>82%</b>	<b>84%</b>	<b>87%</b>	<b>82%</b>	<b>85%</b>	<b>85%</b>	<b>82%</b>	<b>86%</b>	<b>89%</b>



	Jan	Feb	Mar	Apr	May	Jun	Jul	Aug	Sep	Oct	Nov	Dec
# Calcium	109	109	107	109	107	108	106	111	109	111	110	110
# Calcium > 10.2	1	0	0	1	0	0	0	0	1	0	0	0
Pop. Mean	9.2	8.9	9.0	8.9	9.0	9.0	9.0	9.1	9.2	9.1	9.1	9.2
Std. Deviation	0.58	0.66	0.68	0.76	0.78	0.77	0.74	0.78	0.82	0.86	0.68	0.73
<b>% Calcium &gt; 10.2</b>	<b>1%</b>	<b>0%</b>	<b>0%</b>	<b>1%</b>	<b>0%</b>	<b>0%</b>	<b>0%</b>	<b>0%</b>	<b>1%</b>	<b>0%</b>	<b>0%</b>	<b>0%</b>

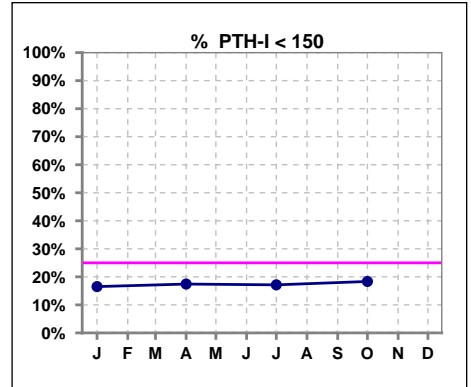


Methodology: a) All labs for 'Adequacy of Dialysis', 'Nutrition', 'Osteodystrophy', 'Anemia' and 'Diabetes' based on last value of month; b) BP's and #L processed are average of all values for month; c) Access data takes last access of month; d) Values for SGA and 'Infection Control' use most recent result.

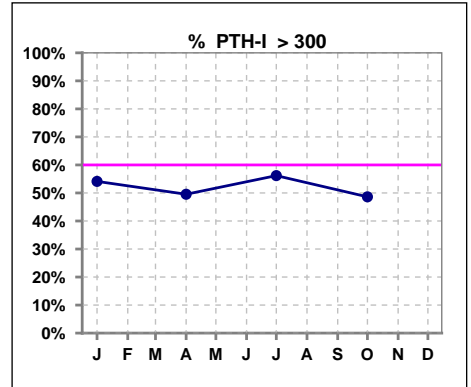
Lab methodology for PTH changed January 2012

**III. OSTEODYSTROPHY - CONT.**

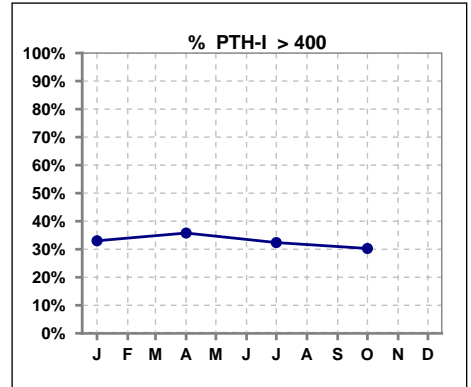
	Jan	Feb	Mar	Apr	May	Jun	Jul	Aug	Sep	Oct	Nov	Dec
# PTH-I	109			109			105			109		
# PTH-I < 150	18			19			18			20		
Pop. Mean	387			378			397			397		
Std. Deviation	329			303			349			455		
<b>% PTH-I &lt; 150</b>	<b>17%</b>			<b>17%</b>			<b>17%</b>			<b>18%</b>		



	Jan	Feb	Mar	Apr	May	Jun	Jul	Aug	Sep	Oct	Nov	Dec
# PTH-I	109			109			105			109		
# PTH-I > 300	59			54			59			53		
Pop. Mean	387			378			397			397		
Std. Deviation	329			303			349			455		
<b>% PTH-I &gt; 300</b>	<b>54%</b>			<b>50%</b>			<b>56%</b>			<b>49%</b>		



	Jan	Feb	Mar	Apr	May	Jun	Jul	Aug	Sep	Oct	Nov	Dec
# PTH-I	109			109			105			109		
# PTH-I > 400	36			39			34			33		
Pop. Mean	387			378			397			397		
Std. Deviation	329			303			349			455		
<b>% PTH-I &gt; 400</b>	<b>33%</b>			<b>36%</b>			<b>32%</b>			<b>30%</b>		

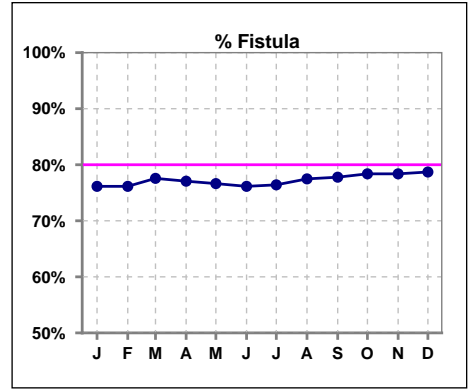


Methodology: a) All labs for 'Adequacy of Dialysis', 'Nutrition', 'Osteodystrophy', 'Anemia' and 'Diabetes' based on last value of month; b) BP's and #L processed are average of all values for month; c) Access data takes last access of month; d) Values for SGA and 'Infection Control' use most recent result.

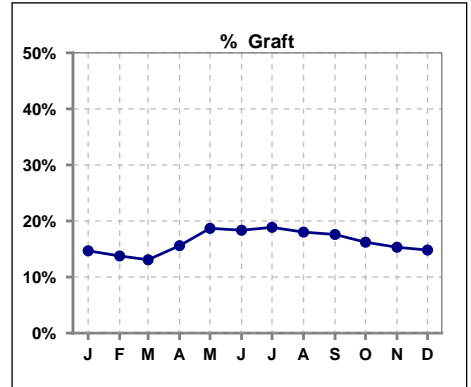


**IV. ACCESS**

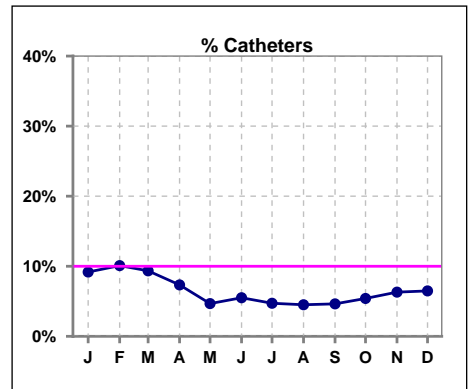
	Jan	Feb	Mar	Apr	May	Jun	Jul	Aug	Sep	Oct	Nov	Dec
<b># Access</b>	109	109	107	109	107	108	106	111	108	111	111	108
<b># Fistula</b>	83	83	83	84	82	83	81	86	84	87	87	85
<b>% Fistula</b>	76%	76%	78%	77%	77%	76%	76%	77%	78%	78%	78%	79%



	Jan	Feb	Mar	Apr	May	Jun	Jul	Aug	Sep	Oct	Nov	Dec
<b># Access</b>	109	109	107	109	107	108	106	111	108	111	111	108
<b># Graft</b>	16	15	14	17	20	20	20	20	19	18	17	16
<b>% Graft</b>	15%	14%	13%	16%	19%	18%	19%	18%	18%	16%	15%	15%



	Jan	Feb	Mar	Apr	May	Jun	Jul	Aug	Sep	Oct	Nov	Dec
<b># Access</b>	109	109	107	109	107	108	106	111	108	111	111	108
<b># Catheters</b>	10	11	10	8	5	6	5	5	5	6	7	7
<b>% Catheters</b>	9%	10%	9%	7%	5%	6%	5%	5%	5%	5%	6%	6%



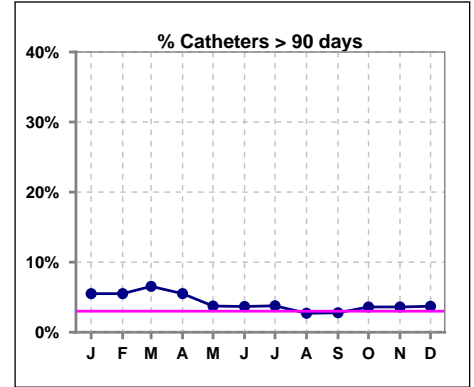
Methodology: a) All labs for 'Adequacy of Dialysis', 'Nutrition', 'Osteodystrophy', 'Anemia' and 'Diabetes' based on last value of month; b) BP's and #L processed are average of all values for month; c) Access data takes last access of month; d) Values for SGA and 'Infection Control' use most recent result.

**IV. ACCESS - CONT.**

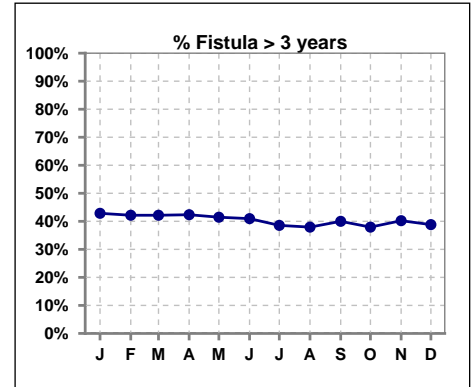
**Catheters > 90 days**

	Jan	Feb	Mar	Apr	May	Jun	Jul	Aug	Sep	Oct	Nov	Dec
# Access	109	109	107	109	107	109	106	111	108	111	111	108
# Catheters	6	6	7	6	4	4	4	3	3	4	4	4
% Catheters	6%	6%	7%	6%	4%	4%	4%	3%	3%	4%	4%	4%

Definition: Catheter in use on last treatment of the month



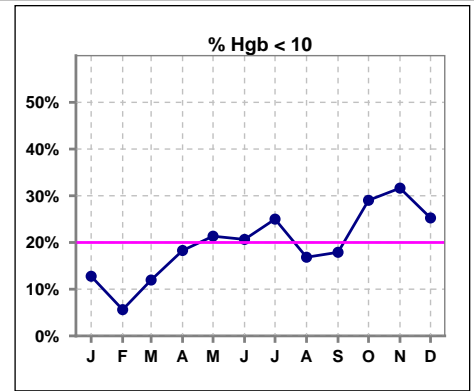
	Jan	Feb	Mar	Apr	May	Jun	Jul	Aug	Sep	Oct	Nov	Dec
# Fistula	84	83	83	85	82	83	83	87	85	87	87	85
# Fistula > 3 yrs	36	35	35	36	34	34	32	33	34	33	35	33
% Fistula > 3 yrs	43%	42%	42%	42%	41%	41%	39%	38%	40%	38%	40%	39%



**V. ANEMIA**

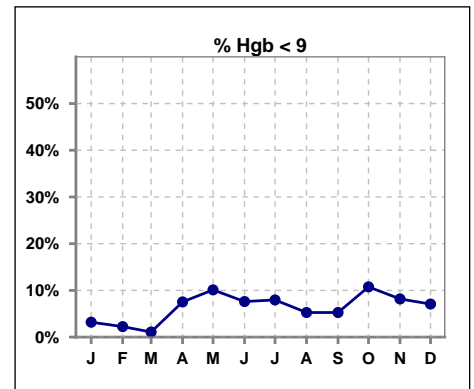
	Jan	Feb	Mar	Apr	May	Jun	Jul	Aug	Sep	Oct	Nov	Dec
# Hgb	94	89	92	93	89	92	88	95	95	93	98	99
# Hgb < 10	12	5	11	17	19	19	22	16	17	27	31	25
Pop. Mean	10.9	11.2	10.9	10.9	10.5	10.7	10.5	10.7	10.6	10.4	10.4	10.6
Std. Deviation	1.0	0.9	0.8	1.1	1.2	1.2	0.9	1.0	1.1	1.1	1.1	1.1
% Hgb < 10	13%	6%	12%	18%	21%	21%	25%	17%	18%	29%	32%	25%

Note: Excludes patients who received no ESA in month.



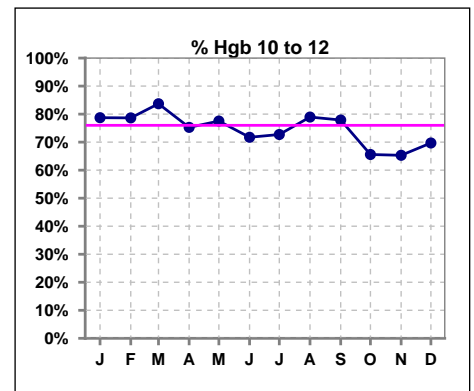
	Jan	Feb	Mar	Apr	May	Jun	Jul	Aug	Sep	Oct	Nov	Dec
# Hgb	94	89	92	93	89	92	88	95	95	93	98	99
# Hgb < 9	3	2	1	7	9	7	7	5	5	10	8	7
Pop. Mean	10.9	11.2	10.9	10.9	10.5	10.7	10.5	10.7	10.6	10.4	10.4	10.6
Std. Deviation	1.0	0.9	0.8	1.1	1.2	1.2	0.9	1.0	1.1	1.1	1.1	1.1
% Hgb < 9	3%	2%	1%	8%	10%	8%	8%	5%	5%	11%	8%	7%

Note: Excludes patients who received no ESA in month.



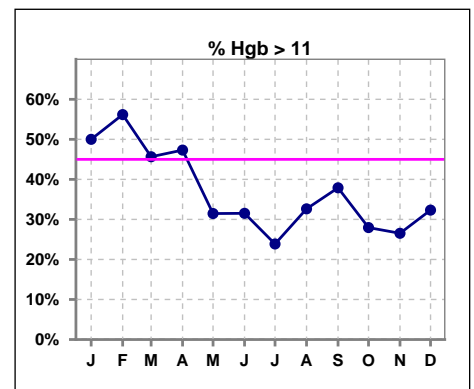
	Jan	Feb	Mar	Apr	May	Jun	Jul	Aug	Sep	Oct	Nov	Dec
# Hgb	94	89	92	93	89	92	88	95	95	93	98	99
# Hgb 10 to 12	74	70	77	70	69	66	64	75	74	61	64	69
Pop. Mean	10.9	11.2	10.9	10.9	10.5	10.7	10.5	10.7	10.6	10.4	10.4	10.6
Std. Deviation	1.0	0.9	0.8	1.1	1.2	1.2	0.9	1.0	1.1	1.1	1.1	1.1
% Hgb 10 to 12	79%	79%	84%	75%	78%	72%	73%	79%	78%	66%	65%	70%

Note: Excludes patients who received no ESA in month.



	Jan	Feb	Mar	Apr	May	Jun	Jul	Aug	Sep	Oct	Nov	Dec
# Hgb	94	89	92	93	89	92	88	95	95	93	98	99
# Hgb > 11	47	50	42	44	28	29	21	31	36	26	26	32
Pop. Mean	10.9	11.2	10.9	10.9	10.5	10.7	10.5	10.7	10.6	10.4	10.4	10.6
Std. Deviation	1.0	0.9	0.8	1.1	1.2	1.2	0.9	1.0	1.1	1.1	1.1	1.1
% Hgb > 11	50%	56%	46%	47%	31%	32%	24%	33%	38%	28%	27%	32%

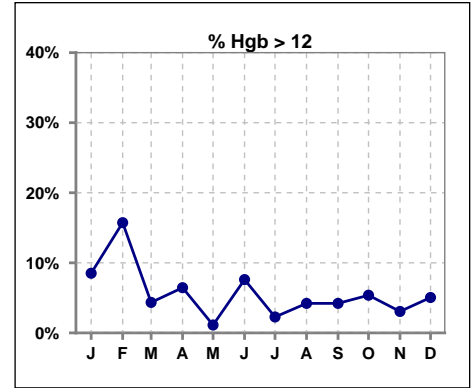
Note: Excludes patients who received no ESA in month.



**V. ANEMIA - CONT.**

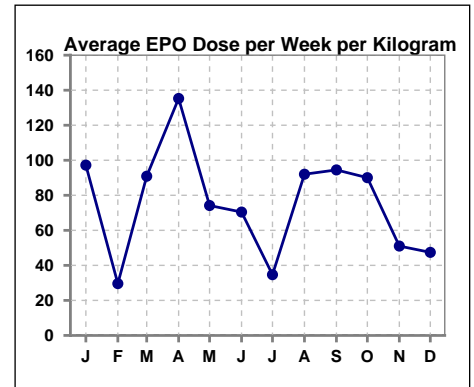
	Jan	Feb	Mar	Apr	May	Jun	Jul	Aug	Sep	Oct	Nov	Dec
# Hgb	94	89	92	93	89	92	88	95	95	93	98	99
# Hgb > 12	8	14	4	6	1	7	2	4	4	5	3	5
Pop. Mean	10.9	11.2	10.9	10.9	10.5	10.7	10.5	10.7	10.6	10.4	10.4	10.6
Std. Deviation	1.0	0.9	0.8	1.1	1.2	1.2	0.9	1.0	1.1	1.1	1.1	1.1
% Hgb > 12	9%	16%	4%	6%	1%	8%	2%	4%	4%	5%	3%	5%

Note: Excludes patients who received no ESA in month.



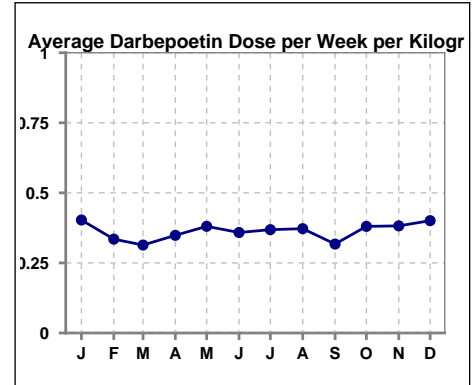
**Average EPO Dose per Week per Kilogram**

	Jan	Feb	Mar	Apr	May	Jun	Jul	Aug	Sep	Oct	Nov	Dec
# Average EPO	97.2	29.6	90.9	135.3	74.2	70.4	34.7	92.0	94.5	90.1	51.0	47.4



**Average Darbepoetin Dose per Week per Kilogram**

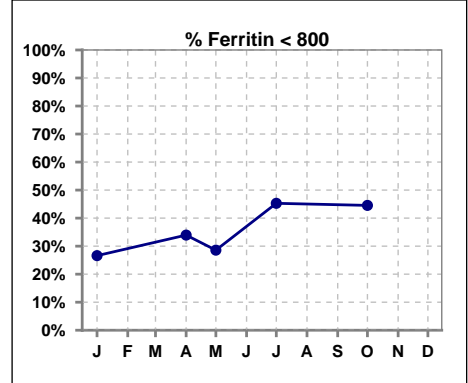
	Jan	Feb	Mar	Apr	May	Jun	Jul	Aug	Sep	Oct	Nov	Dec
# Average Darbepoetin	.4	.3	.3	.3	.4	.4	.4	.4	.3	.4	.4	.4



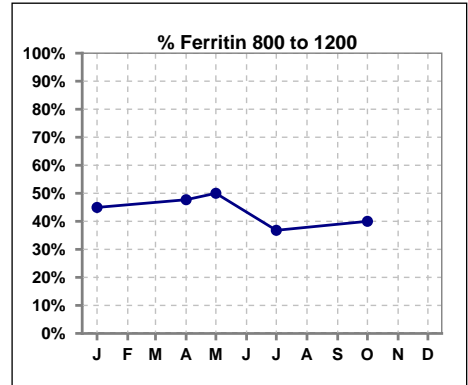
**V. ANEMIA - CONT.**

**Iron Profile**

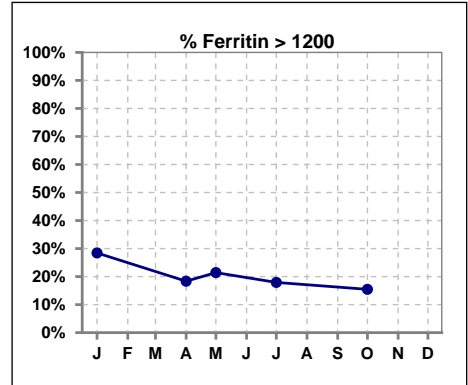
	Jan	Feb	Mar	Apr	May	Jun	Jul	Aug	Sep	Oct	Nov	Dec
# Ferritin	109			109	14		106			110		
# Ferritin < 800	29			37	4		48			49		
Pop. Mean	1018			918	986		906			899		
Std. Deviation	366			334	388		381			524		
<b>% Ferritin &lt; 800</b>	<b>27%</b>			<b>34%</b>	<b>29%</b>		<b>45%</b>			<b>45%</b>		



	Jan	Feb	Mar	Apr	May	Jun	Jul	Aug	Sep	Oct	Nov	Dec
# Ferritin	109			109	14		106			110		
# Ferritin 800 to 1200	49			52	7		39			44		
Pop. Mean	1018			918	986		906			899		
Std. Deviation	366			334	388		381			524		
<b>% Ferritin 800 to 1200</b>	<b>45%</b>			<b>48%</b>	<b>50%</b>		<b>37%</b>			<b>40%</b>		

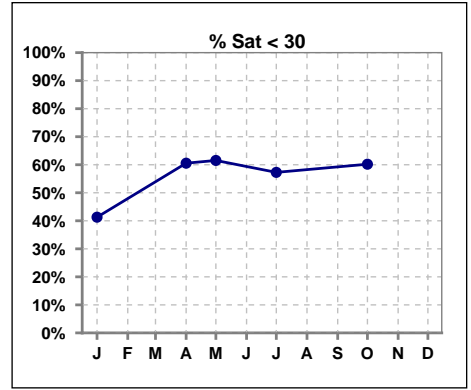


	Jan	Feb	Mar	Apr	May	Jun	Jul	Aug	Sep	Oct	Nov	Dec
# Ferritin	109			109	14		106			110		
# Ferritin > 1200	31			20	3		19			17		
Pop. Mean	1018			918	986		906			899		
Std. Deviation	366			334	388		381			524		
<b>% Ferritin &gt; 1200</b>	<b>28%</b>			<b>18%</b>	<b>21%</b>		<b>18%</b>			<b>15%</b>		

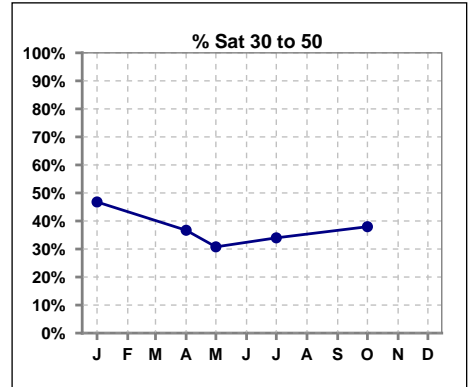


**V. ANEMIA - CONT.**

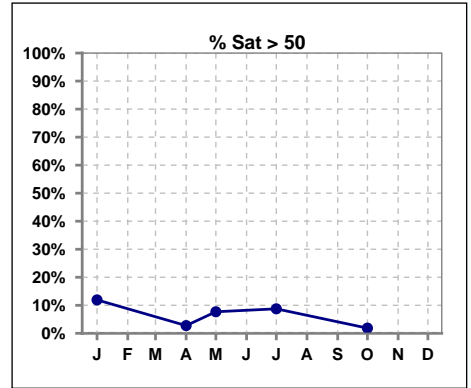
	Jan	Feb	Mar	Apr	May	Jun	Jul	Aug	Sep	Oct	Nov	Dec
# % Sat	109			109	13		103			108		
# % Sat < 30	45			66	8		59			65		
Pop. Mean	35			29	27		30			28		
Std. Deviation	14			10	12		11			10		
<b>%% Sat &lt; 30</b>	<b>41%</b>			<b>61%</b>	<b>62%</b>		<b>57%</b>			<b>60%</b>		



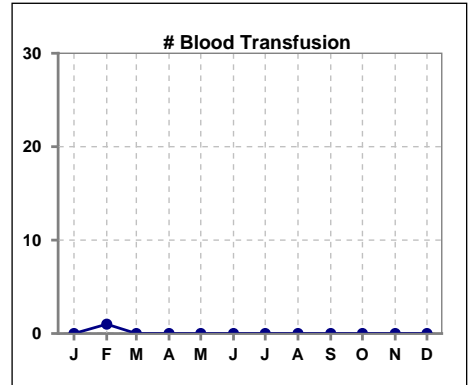
	Jan	Feb	Mar	Apr	May	Jun	Jul	Aug	Sep	Oct	Nov	Dec
# % Sat	109			109	13		103			108		
# % Sat 30 to 50	51			40	4		35			41		
Pop. Mean	35			29	27		30			28		
Std. Deviation	14			10	12		11			10		
<b>%% Sat 30 to 50</b>	<b>47%</b>			<b>37%</b>	<b>31%</b>		<b>34%</b>			<b>38%</b>		



	Jan	Feb	Mar	Apr	May	Jun	Jul	Aug	Sep	Oct	Nov	Dec
# % Sat	109			109	13		103			108		
# % Sat > 50	13			3	1		9			2		
Pop. Mean	35			29	27		30			28		
Std. Deviation	14			10	12		11			10		
<b>%% Sat &gt; 50</b>	<b>12%</b>			<b>3%</b>	<b>8%</b>		<b>9%</b>			<b>2%</b>		

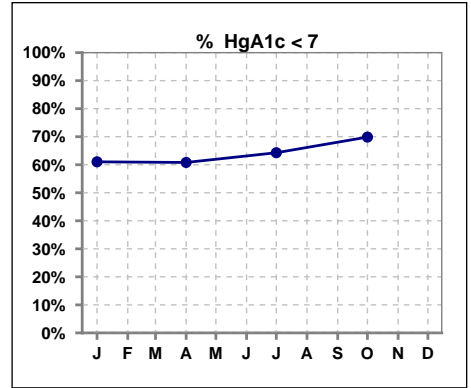


	Jan	Feb	Mar	Apr	May	Jun	Jul	Aug	Sep	Oct	Nov	Dec
# Patient	109	109	109	109	108	109	106	112	111	111	111	110
# Blood Transfusion	0	1	0	0	0	0	0	0	0	0	0	0



**VI. Diabetes**

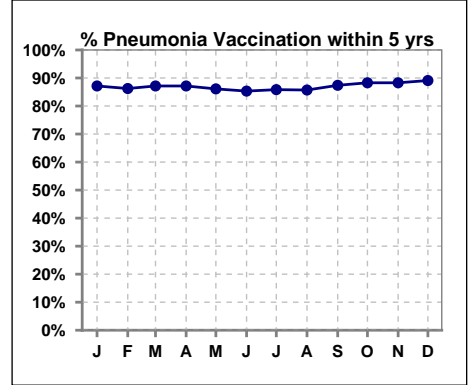
	Jan	Feb	Mar	Apr	May	Jun	Jul	Aug	Sep	Oct	Nov	Dec
# HgA1c	77			74			70			73		
# HgA1c < 7	47			45			45			51		
Pop. Mean	6.7			6.7			6.8			6.7		
Std. Deviation	1.44			1.42			1.71			1.51		
<b>% HgA1c &lt; 7</b>	<b>61%</b>			<b>61%</b>			<b>64%</b>			<b>70%</b>		



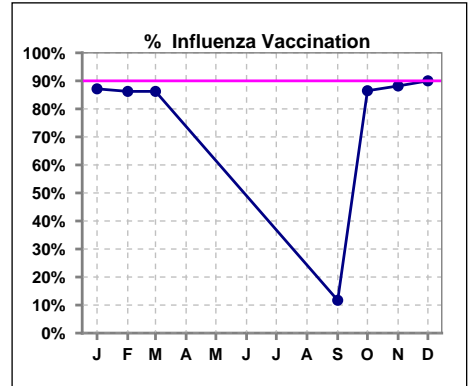
**VII. Infection Control**

**Pneumonia vaccination within the past five years**

	Jan	Feb	Mar	Apr	May	Jun	Jul	Aug	Sep	Oct	Nov	Dec
<b># Patient</b>	109	109	109	109	108	109	106	112	111	111	111	110
<b># Pneumonia</b>	95	94	95	95	93	93	91	96	97	98	98	98
<b>% Pneumonia</b>	87%	86%	87%	87%	86%	85%	86%	86%	87%	88%	88%	89%



	Jan	Feb	Mar	Apr	May	Jun	Jul	Aug	Sep	Oct	Nov	Dec
<b># Patient</b>	109	109	109						111	111	110	110
<b># Influenza</b>	95	94	94						13	96	97	99
<b>% Influenza</b>	87%	86%	86%						12%	86%	88%	90%

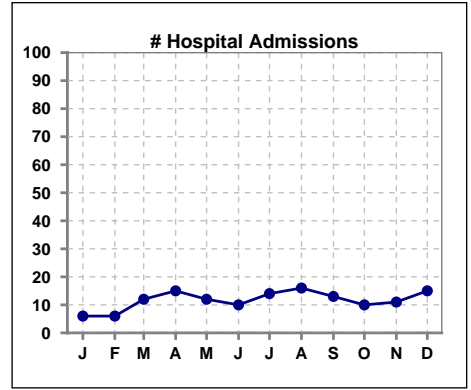


Methodology: a) All labs for 'Adequacy of Dialysis', 'Nutrition', 'Osteodystrophy', 'Anemia' and 'Diabetes' based on last value of month; b) BP's and #L processed are average of all values for month; c) Access data takes last access of month; d) Values for SGA and 'Infection Control' use most recent result.

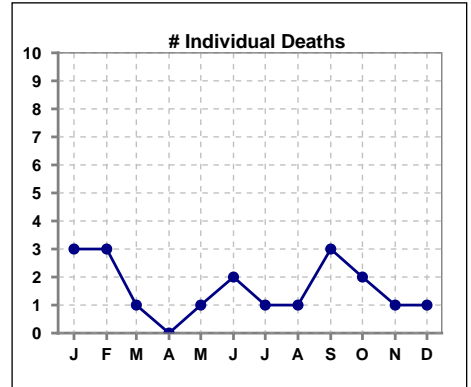


**VIII. Outcome measures**

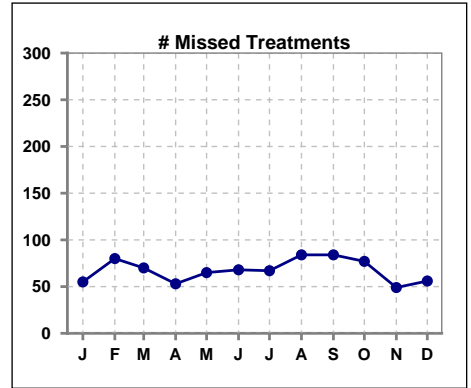
	Jan	Feb	Mar	Apr	May	Jun	Jul	Aug	Sep	Oct	Nov	Dec
<b># Patient</b>	109	109	109	109	108	109	106	112	111	111	111	110
<b># Hospital Admissions</b>	6	6	12	15	12	10	14	16	13	10	11	15



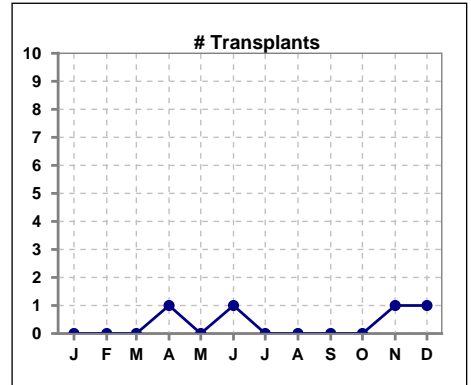
	Jan	Feb	Mar	Apr	May	Jun	Jul	Aug	Sep	Oct	Nov	Dec
<b># Patient</b>	109	109	109	109	108	109	106	112	111	111	111	110
<b># Individual Deaths</b>	3	3	1	0	1	2	1	1	3	2	1	1



	Jan	Feb	Mar	Apr	May	Jun	Jul	Aug	Sep	Oct	Nov	Dec
<b># Patient</b>	109	109	109	109	108	109	106	112	111	111	111	110
<b># Missed Treatments</b>	55	80	70	53	65	68	67	84	84	77	49	56



	Jan	Feb	Mar	Apr	May	Jun	Jul	Aug	Sep	Oct	Nov	Dec
<b># Patient</b>	109	109	109	109	108	109	106	112	111	111	111	110
<b># Transplants</b>	0	0	0	1	0	1	0	0	0	0	1	1



Methodology: a) All labs for 'Adequacy of Dialysis', 'Nutrition', 'Osteodystrophy', 'Anemia' and 'Diabetes' based on last value of month; b) BP's and #L processed are average of all values for month; c) Access data takes last access of month; d) Values for SGA and 'Infection Control' use most recent result.