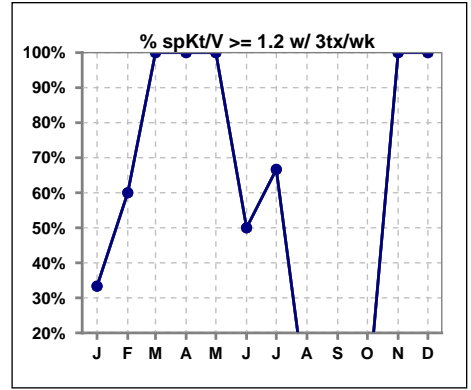
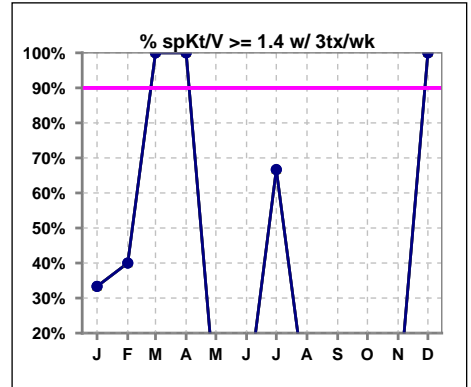


I. ADEQUACY OF DIALYSIS

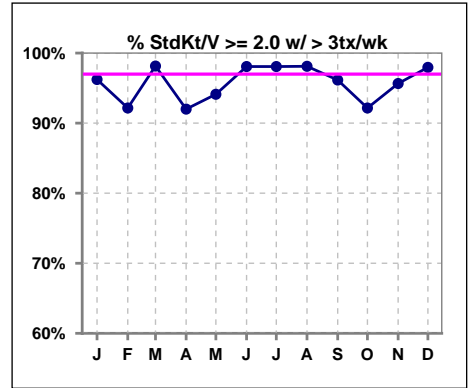
	Jan	Feb	Mar	Apr	May	Jun	Jul	Aug	Sep	Oct	Nov	Dec
# spKt/V w/3tx/wk	3	5	2	1	1	2	3	0	0	0	1	1
# spKt/V >= 1.2 w/3tx/wk	1	3	2	1	1	1	2	0	0	0	1	1
Pop. Mean	1.11	1.18	1.57	1.40	1.21	1.13	1.79	0	0	0	1.39	1.72
Std. Deviation	0.41	0.47	0.22	0	0	0.09	0.64	0	0	0	0	0
% >= 1.2 w/3tx/wk	33%	60%	100%	100%	100%	50%	67%	0%	0%	0%	100%	100%



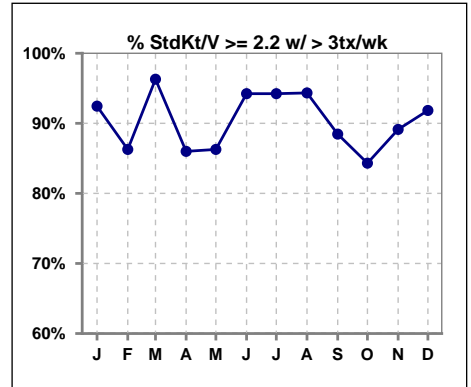
	Jan	Feb	Mar	Apr	May	Jun	Jul	Aug	Sep	Oct	Nov	Dec
# spKt/V w/3tx/wk	3	5	2	1	1	2	3	0	0	0	1	1
# spKt/V >= 1.4 w/3tx/wk	1	2	2	1	0	0	2	0	0	0	0	1
Pop. Mean	1.11	1.18	1.57	1.40	1.21	1.13	1.79	0	0	0	1.39	1.72
Std. Deviation	0.41	0.47	0.22	0	0	0.09	0.64	0	0	0	0	0
% >= 1.4 w/3tx/wk	33%	40%	100%	100%	0%	0%	67%	0%	0%	0%	0%	100%



	Jan	Feb	Mar	Apr	May	Jun	Jul	Aug	Sep	Oct	Nov	Dec
# StdKt/V w/>3tx/wk	53	51	54	50	51	52	52	53	52	51	46	49
# >= 2.0 w/>3tx/wk	51	47	53	46	48	51	51	52	50	47	44	48
Pop. Mean	2.52	2.55	2.57	2.50	2.55	2.58	2.53	2.56	2.49	2.47	2.51	2.54
Std. Deviation	0.26	0.43	0.35	0.29	0.46	0.35	0.23	0.33	0.28	0.29	0.27	0.28
% >= 2.0 w/>3tx/wk	96%	92%	98%	92%	94%	98%	98%	98%	96%	92%	96%	98%



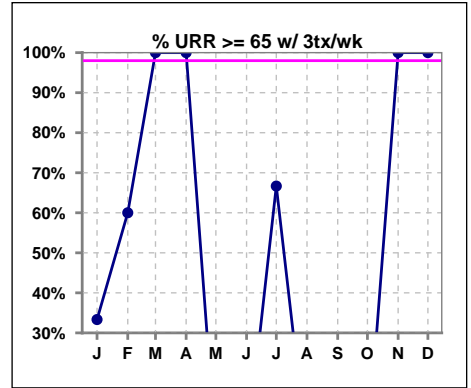
	Jan	Feb	Mar	Apr	May	Jun	Jul	Aug	Sep	Oct	Nov	Dec
# StdKt/V w/>3tx/wk	53	51	54	50	51	52	52	53	52	51	46	49
# >= 2.2 w/>3tx/wk	49	44	52	43	44	49	49	50	46	43	41	45
Pop. Mean	2.52	2.55	2.57	2.50	2.55	2.58	2.53	2.56	2.49	2.47	2.51	2.54
Std. Deviation	0.26	0.43	0.35	0.29	0.46	0.35	0.23	0.33	0.28	0.29	0.27	0.28
% >= 2.2 w/>3tx/wk	92%	86%	96%	86%	86%	94%	94%	94%	88%	84%	89%	92%



Methodology: a) All labs for 'Adequacy of Dialysis', 'Nutrition', 'Osteodystrophy' and 'Anemia' based on last value of month; b) Access data takes last access of month; c) Values for 'Infection Control' uses most recent result.

I. ADEQUACY OF DIALYSIS - CONT.

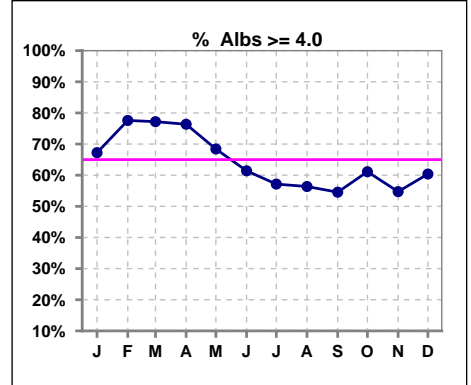
	Jan	Feb	Mar	Apr	May	Jun	Jul	Aug	Sep	Oct	Nov	Dec
# URR w/ 3tx/wk	3	5	2	1	2	2	3	0	0	0	1	1
# URR>=65 w/ 3tx/wk	1	3	2	1	0	0	2	0	0	0	1	1
Pop. Mean	60	61	75	72	62	60	77	0	0	0	71	78
Std. Deviation	14.38	16.49	3.55	0	2.53	1.43	11.74	0	0	0	0	0
% URR>=65 w/ 3tx/wk	33%	60%	100%	100%	0%	0%	67%	0%	0%	0%	100%	100%



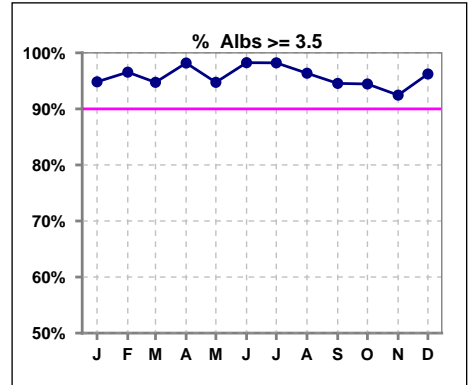
*Albumin values use BCG method - as of July 2001

II. NUTRITION

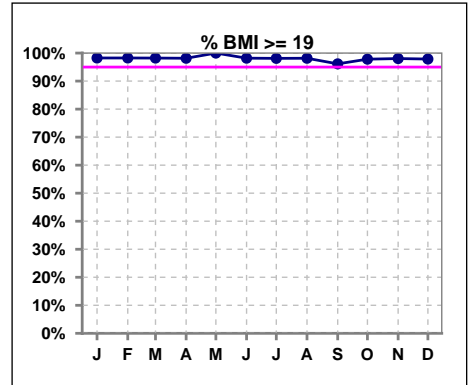
	Jan	Feb	Mar	Apr	May	Jun	Jul	Aug	Sep	Oct	Nov	Dec
# Albumin	58	58	57	55	57	57	56	55	55	54	53	53
# Albumin >= 4.0	39	45	44	42	39	35	32	31	30	33	29	32
Pop. Mean	4.1	4.1	4.2	4.1	4.1	4.0	4.0	4.1	4.0	4.0	4.0	4.0
Std. Deviation	0.37	0.36	0.38	0.32	0.35	0.30	0.36	0.41	0.37	0.34	0.46	0.37
% Alb >= 4.0	67%	78%	77%	76%	68%	61%	57%	56%	55%	61%	55%	60%



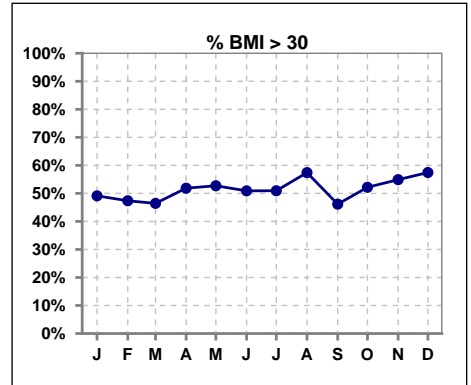
	Jan	Feb	Mar	Apr	May	Jun	Jul	Aug	Sep	Oct	Nov	Dec
# Albumin	58	58	57	55	57	57	56	55	55	54	53	53
# Albumin >= 3.5	55	56	54	54	54	56	55	53	52	51	49	51
Pop. Mean	4.1	4.1	4.2	4.1	4.1	4.0	4.0	4.1	4.0	4.0	4.0	4.0
Std. Deviation	0.37	0.36	0.38	0.32	0.35	0.30	0.36	0.41	0.37	0.34	0.46	0.37
% Alb >= 3.5	95%	97%	95%	98%	95%	98%	98%	96%	95%	94%	92%	96%



	Jan	Feb	Mar	Apr	May	Jun	Jul	Aug	Sep	Oct	Nov	Dec
# BMI	57	57	56	54	55	55	53	54	26	46	51	47
# BMI >= 19	56	56	55	53	55	54	52	53	25	45	50	46
Pop. Mean	31	31	30	30	31	31	31	32	30	31	31	31
Std. Deviation	7.5	7.7	7.5	7.3	7.3	7.4	7.5	7.2	6.3	7.3	7.4	7.3
% BMI >= 19	98%	98%	98%	98%	100%	98%	98%	98%	96%	98%	98%	98%



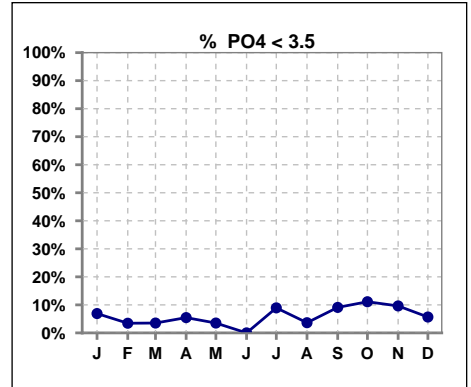
	Jan	Feb	Mar	Apr	May	Jun	Jul	Aug	Sep	Oct	Nov	Dec
# BMI	57	57	56	54	55	55	53	54	26	46	51	47
# BMI > 30	28	27	26	28	29	28	27	31	12	24	28	27
Pop. Mean	31	31	30	30	31	31	31	32	30	31	31	31
Std. Deviation	7.5	7.7	7.5	7.3	7.3	7.4	7.5	7.2	6.3	7.3	7.4	7.3
% BMI > 30	49%	47%	46%	52%	53%	51%	51%	57%	46%	52%	55%	57%



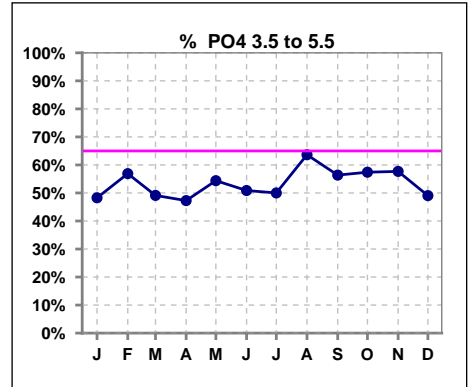
Lab methodology for PTH changed January 2012

III. OSTEODYSTROPHY

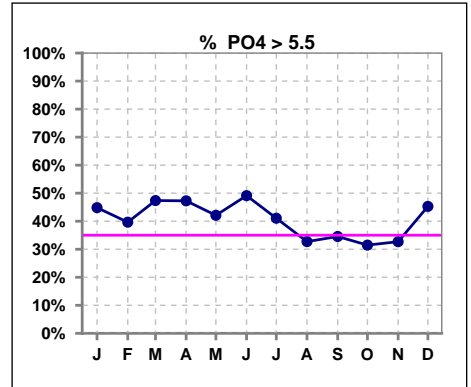
	Jan	Feb	Mar	Apr	May	Jun	Jul	Aug	Sep	Oct	Nov	Dec
# PO4	58	58	57	55	57	57	56	55	55	54	52	53
# PO4 < 3.5	4	2	2	3	2	0	5	2	5	6	5	3
Pop. Mean	5.5	5.5	5.5	5.4	5.3	5.6	5.5	5.4	5.1	5.2	5.2	5.4
Std. Deviation	1.52	1.53	1.60	1.26	1.29	1.31	1.65	1.37	1.33	1.73	1.45	1.50
% PO4 < 3.5	7%	3%	4%	5%	4%	0%	9%	4%	9%	11%	10%	6%



	Jan	Feb	Mar	Apr	May	Jun	Jul	Aug	Sep	Oct	Nov	Dec
# PO4	58	58	57	55	57	57	56	55	55	54	52	53
# PO4 3.5 to 5.5	28	33	28	26	31	29	28	35	31	31	30	26
Pop. Mean	5.5	5.5	5.5	5.4	5.3	5.6	5.5	5.4	5.1	5.2	5.2	5.4
Std. Deviation	1.52	1.53	1.60	1.26	1.29	1.31	1.65	1.37	1.33	1.73	1.45	1.50
% PO4 3.5 to 5.5	48%	57%	49%	47%	54%	51%	50%	64%	56%	57%	58%	49%



	Jan	Feb	Mar	Apr	May	Jun	Jul	Aug	Sep	Oct	Nov	Dec
# PO4	58	58	57	55	57	57	56	55	55	54	52	53
# PO4 > 5.5	26	23	27	26	24	28	23	18	19	17	17	24
Pop. Mean	5.5	5.5	5.5	5.4	5.3	5.6	5.5	5.4	5.1	5.2	5.2	5.4
Std. Deviation	1.52	1.53	1.60	1.26	1.29	1.31	1.65	1.37	1.33	1.73	1.45	1.50
% PO4 > 5.5	45%	40%	47%	47%	42%	49%	41%	33%	35%	31%	33%	45%

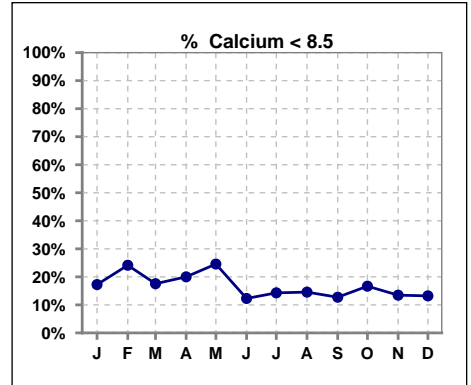


Methodology: a) All labs for 'Adequacy of Dialysis', 'Nutrition', 'Osteodystrophy' and 'Anemia' based on last value of month; b) Access data takes last access of month; c) Values for 'Infection Control' uses most recent result.

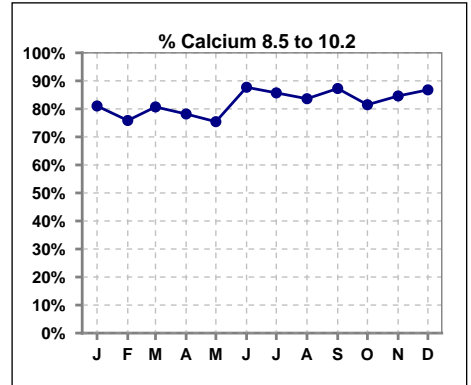
Lab methodology for PTH changed January 2012

III. OSTEODYSTROPHY - CONT.

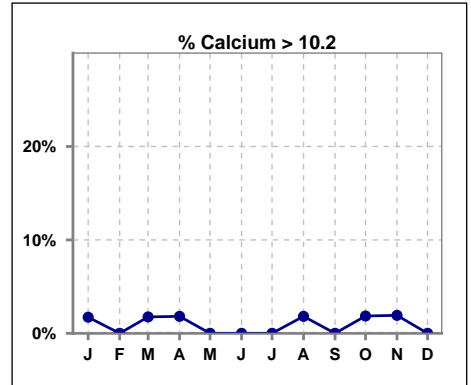
	Jan	Feb	Mar	Apr	May	Jun	Jul	Aug	Sep	Oct	Nov	Dec
# Calcium	58	58	57	55	57	57	56	55	55	54	52	53
# Calcium < 8.5	10	14	10	11	14	7	8	8	7	9	7	7
Pop. Mean	9.0	8.9	9.0	8.9	8.9	9.1	9.1	9.1	9.2	9.1	9.1	9.0
Std. Deviation	0.62	0.64	0.53	0.66	0.69	0.60	0.56	0.62	0.64	0.69	0.81	0.55
% Calcium < 8.5	17%	24%	18%	20%	25%	12%	14%	15%	13%	17%	13%	13%



	Jan	Feb	Mar	Apr	May	Jun	Jul	Aug	Sep	Oct	Nov	Dec
# Calcium	58	58	57	55	57	57	56	55	55	54	52	53
# Calcium 8.5 to 10.2	47	44	46	43	43	50	48	46	48	44	44	46
Pop. Mean	9.0	8.9	9.0	8.9	8.9	9.1	9.1	9.1	9.2	9.1	9.1	9.0
Std. Deviation	0.62	0.64	0.53	0.66	0.69	0.60	0.56	0.62	0.64	0.69	0.81	0.55
% Calcium 8.5 to 10.2	81%	76%	81%	78%	75%	88%	86%	84%	87%	81%	85%	87%



	Jan	Feb	Mar	Apr	May	Jun	Jul	Aug	Sep	Oct	Nov	Dec
# Calcium	58	58	57	55	57	57	56	55	55	54	52	53
# Calcium > 10.2	1	0	1	1	0	0	0	1	0	1	1	0
Pop. Mean	9.0	8.9	9.0	8.9	8.9	9.1	9.1	9.1	9.2	9.1	9.1	9.0
Std. Deviation	0.62	0.64	0.53	0.66	0.69	0.60	0.56	0.62	0.64	0.69	0.81	0.55
% Calcium > 10.2	2%	0%	2%	2%	0%	0%	0%	2%	0%	2%	2%	0%

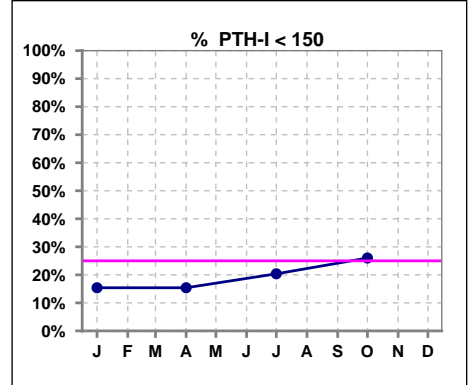


Methodology: a) All labs for 'Adequacy of Dialysis', 'Nutrition', 'Osteodystrophy' and 'Anemia' based on last value of month; b) Access data takes last access of month; c) Values for 'Infection Control' uses most recent result.

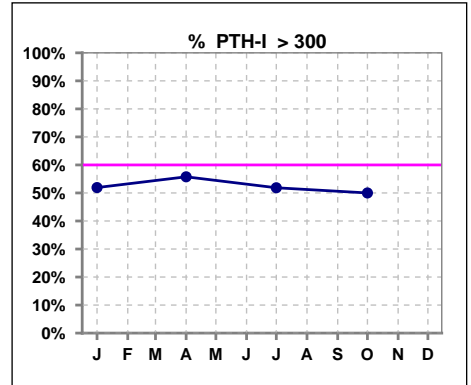
Lab methodology for PTH changed January 2012

III. OSTEODYSTROPHY - CONT.

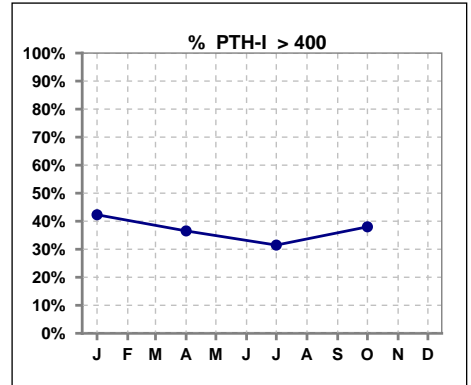
	Jan	Feb	Mar	Apr	May	Jun	Jul	Aug	Sep	Oct	Nov	Dec
# PTH-I	52			52			54			50		
# PTH-I < 150	8			8			11			13		
Pop. Mean	412			435			420			424		
Std. Deviation	283			326			358			433		
% PTH-I < 150	15%			15%			20%			26%		



	Jan	Feb	Mar	Apr	May	Jun	Jul	Aug	Sep	Oct	Nov	Dec
# PTH-I	52			52			54			50		
# PTH-I > 300	27			29			28			25		
Pop. Mean	412			435			420			424		
Std. Deviation	283			326			358			433		
% PTH-I > 300	52%			56%			52%			50%		



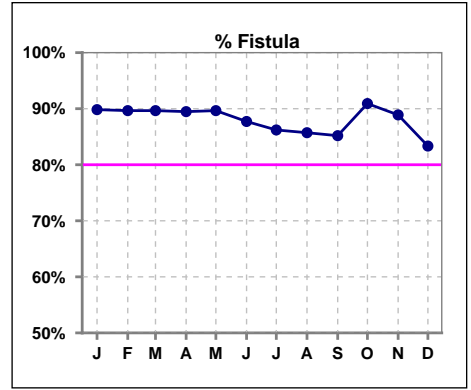
	Jan	Feb	Mar	Apr	May	Jun	Jul	Aug	Sep	Oct	Nov	Dec
# PTH-I	52			52			54			50		
# PTH-I > 400	52			52			54			50		
Pop. Mean	412			435			420			424		
Std. Deviation	283			326			358			433		
% PTH-I > 400	42%			37%			31%			38%		



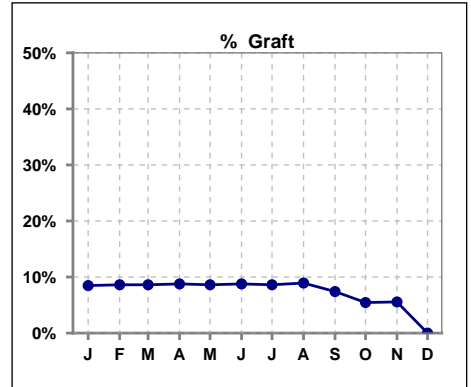
Methodology: a) All labs for 'Adequacy of Dialysis', 'Nutrition', 'Osteodystrophy' and 'Anemia' based on last value of month; b) Access data takes last access of month; c) Values for 'Infection Control' uses most recent result.

IV. ACCESS

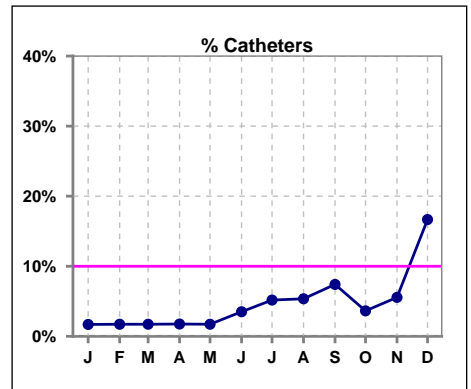
	Jan	Feb	Mar	Apr	May	Jun	Jul	Aug	Sep	Oct	Nov	Dec
# Access	59	58	58	57	58	57	58	56	27	38	35	12
# Fistula	53	52	52	51	52	50	50	48	23	50	48	10
% Fistula	90%	90%	90%	89%	90%	88%	86%	86%	85%	91%	89%	83%



	Jan	Feb	Mar	Apr	May	Jun	Jul	Aug	Sep	Oct	Nov	Dec
# Access	59	58	58	57	58	57	58	56	27	38	35	12
# Graft	5	5	5	5	5	5	5	5	2	3	3	0
% Graft	8%	9%	9%	9%	9%	9%	9%	9%	7%	5%	6%	0%



	Jan	Feb	Mar	Apr	May	Jun	Jul	Aug	Sep	Oct	Nov	Dec
# Access	59	58	58	57	58	57	58	56	27	38	35	12
# Catheters	1	1	1	1	1	2	3	3	2	2	3	2
% Catheters	2%	2%	2%	2%	2%	4%	5%	5%	7%	4%	6%	17%

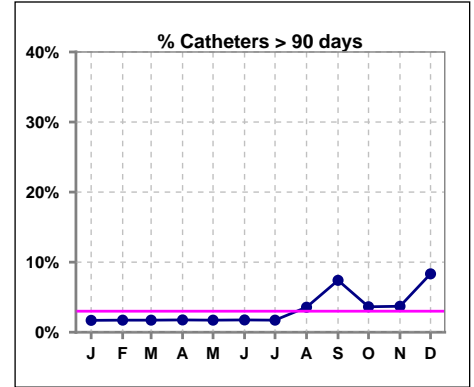


IV. ACCESS - CONT.

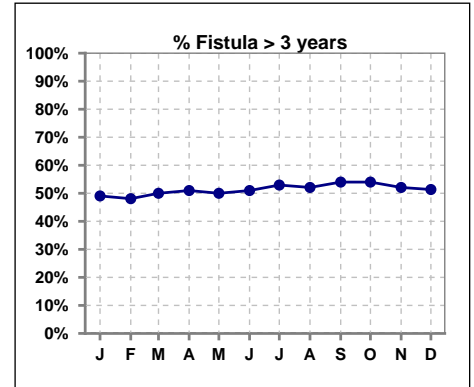
Catheters > 90 days

	Jan	Feb	Mar	Apr	May	Jun	Jul	Aug	Sep	Oct	Nov	Dec
# Access	59	58	58	57	58	57	58	56	27	55	54	12
# Catheters	1	1	1	1	1	1	1	2	2	2	2	1
% Catheters	2%	2%	2%	2%	2%	2%	2%	4%	7%	4%	4%	8%

Definition: Catheter in use on last treatment of the month

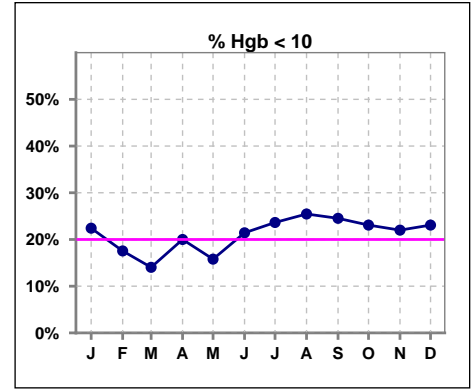


	Jan	Feb	Mar	Apr	May	Jun	Jul	Aug	Sep	Oct	Nov	Dec
# Fistula	53	52	52	51	52	51	51	48	50	50	48	37
# Fistula > 3 yrs	26	25	26	26	26	26	27	25	27	27	25	19
% Fistula > 3 yrs	49%	48%	50%	51%	50%	51%	53%	52%	54%	54%	52%	51%

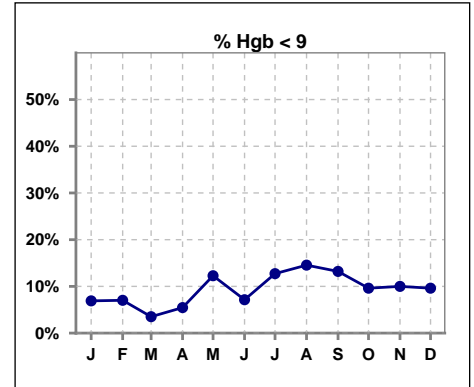


V. ANEMIA

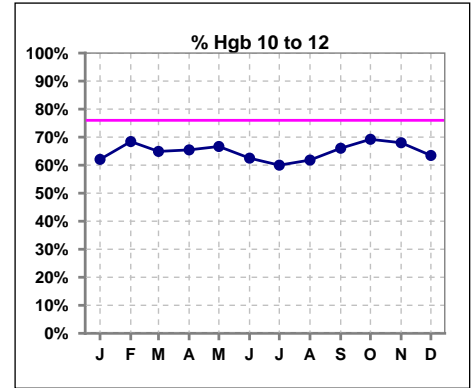
	Jan	Feb	Mar	Apr	May	Jun	Jul	Aug	Sep	Oct	Nov	Dec
# Hgb	58	57	57	55	57	56	55	55	53	52	50	52
# Hgb < 10	13	10	8	11	9	12	13	14	13	12	11	12
Pop. Mean	10.9	11.0	11.2	10.9	11.0	10.8	10.8	10.7	10.6	10.6	10.7	10.8
Std. Deviation	1.3	1.3	1.2	1.2	1.4	1.3	1.4	1.6	1.4	1.3	1.2	1.3
% Hgb < 10	22%	18%	14%	20%	16%	21%	24%	25%	25%	23%	22%	23%



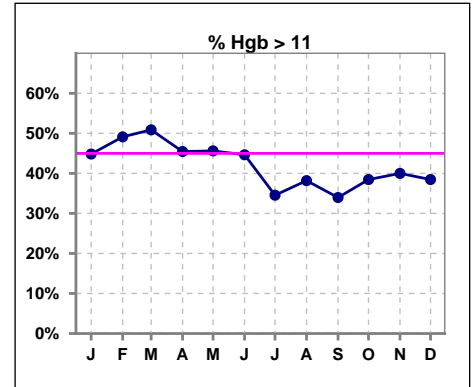
	Jan	Feb	Mar	Apr	May	Jun	Jul	Aug	Sep	Oct	Nov	Dec
# Hgb	58	57	57	55	57	56	55	55	53	52	50	52
# Hgb < 9	4	4	2	3	7	4	7	8	7	5	5	5
Pop. Mean	10.9	11.0	11.2	10.9	11.0	10.8	10.8	10.7	10.6	10.6	10.7	10.8
Std. Deviation	1.3	1.3	1.2	1.2	1.4	1.3	1.4	1.6	1.4	1.3	1.2	1.3
% Hgb < 9	7%	7%	4%	5%	12%	7%	13%	15%	13%	10%	10%	10%



	Jan	Feb	Mar	Apr	May	Jun	Jul	Aug	Sep	Oct	Nov	Dec
# Hgb	58	57	57	55	57	56	55	55	53	52	50	52
# Hgb 10 to 12	36	39	37	36	38	35	33	34	35	36	34	33
Pop. Mean	10.9	11.0	11.2	10.9	11.0	10.8	10.8	10.7	10.6	10.6	10.7	10.8
Std. Deviation	1.3	1.3	1.2	1.2	1.4	1.3	1.4	1.6	1.4	1.3	1.2	1.3
% Hgb 10 to 12	62%	68%	65%	65%	67%	63%	60%	62%	66%	69%	68%	63%

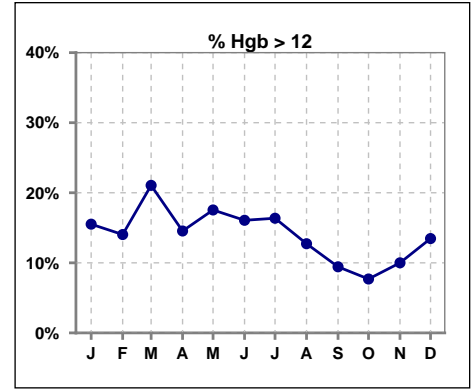


	Jan	Feb	Mar	Apr	May	Jun	Jul	Aug	Sep	Oct	Nov	Dec
# Hgb	58	57	57	55	57	56	55	55	53	52	50	52
# Hgb > 11	26	28	29	25	26	25	19	21	18	20	20	20
Pop. Mean	10.9	11.0	11.2	10.9	11.0	10.8	10.8	10.7	10.6	10.6	10.7	10.8
Std. Deviation	1.3	1.3	1.2	1.2	1.4	1.3	1.4	1.6	1.4	1.3	1.2	1.3
% Hgb > 11	45%	49%	51%	45%	46%	45%	35%	38%	34%	38%	40%	38%



V. ANEMIA - CONT.

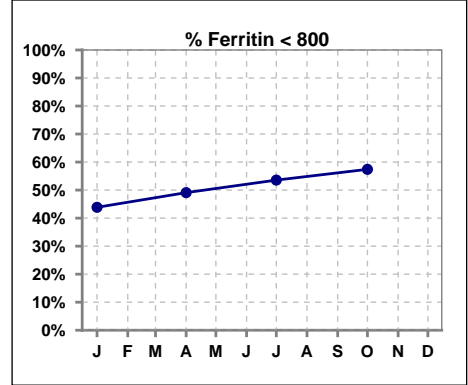
	Jan	Feb	Mar	Apr	May	Jun	Jul	Aug	Sep	Oct	Nov	Dec
# Hgb	58	57	57	55	57	56	55	55	53	52	50	52
# Hgb > 12	9	8	12	8	10	9	9	7	5	4	5	7
Pop. Mean	10.9	11.0	11.2	10.9	11.0	10.8	10.8	10.7	10.6	10.6	10.7	10.8
Std. Deviation	1.3	1.3	1.2	1.2	1.4	1.3	1.4	1.6	1.4	1.3	1.2	1.3
% Hgb > 12	16%	14%	21%	15%	18%	16%	16%	13%	9%	8%	10%	13%



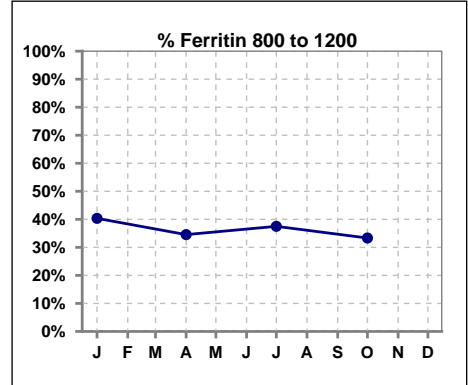
V. ANEMIA - CONT.

Iron Profile

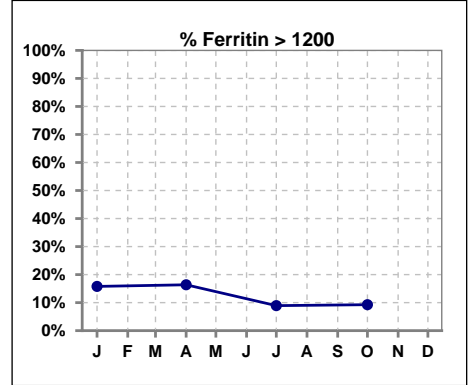
	Jan	Feb	Mar	Apr	May	Jun	Jul	Aug	Sep	Oct	Nov	Dec
# Ferritin	57			55			56			54		
# Ferritin < 800	25			27			30			31		
Pop. Mean	845			792			738			717		
Std. Deviation	410			427			373			410		
% Ferritin < 800	44%			49%			54%			57%		



	Jan	Feb	Mar	Apr	May	Jun	Jul	Aug	Sep	Oct	Nov	Dec
# Ferritin	57			55			56			54		
# Ferritin 800 to 1200	23			19			21			18		
Pop. Mean	845			792			738			717		
Std. Deviation	410			427			373			410		
% Ferritin 800 to 1200	40%			35%			38%			33%		

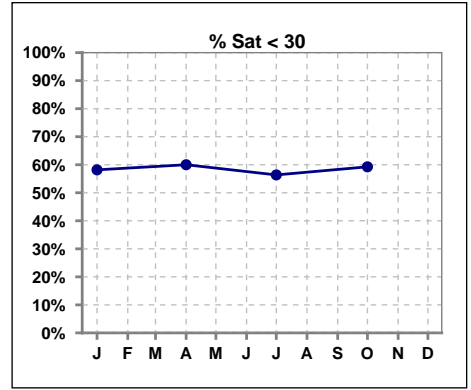


	Jan	Feb	Mar	Apr	May	Jun	Jul	Aug	Sep	Oct	Nov	Dec
# Ferritin	57			55			56			54		
# Ferritin > 1200	9			9			5			5		
Pop. Mean	845			792			738			717		
Std. Deviation	410			427			373			410		
% Ferritin > 1200	16%			16%			9%			9%		

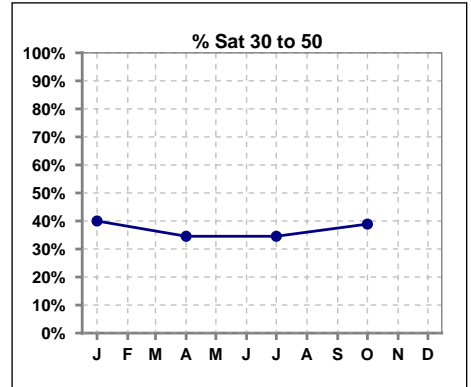


V. ANEMIA - CONT.

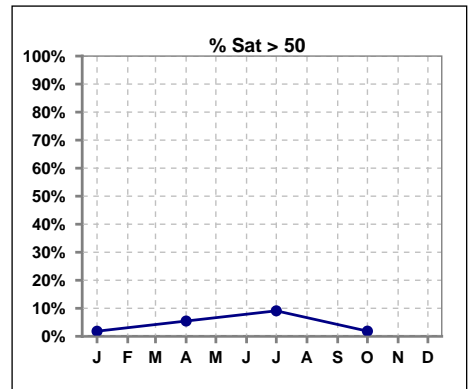
	Jan	Feb	Mar	Apr	May	Jun	Jul	Aug	Sep	Oct	Nov	Dec
# % Sat	55			55			55			54		
# % Sat < 30	32			33			31			32		
Pop. Mean	28			29			30			26		
Std. Deviation	10			15			15			9		
% % Sat < 30	58%			60%			56%			59%		



	Jan	Feb	Mar	Apr	May	Jun	Jul	Aug	Sep	Oct	Nov	Dec
# % Sat	55			55			55			54		
# % Sat 30 to 50	22			19			19			21		
Pop. Mean	28			29			30			26		
Std. Deviation	10			15			15			9		
% % Sat 30 to 50	40%			35%			35%			39%		

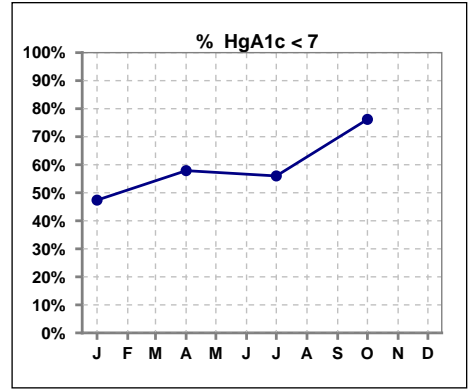


	Jan	Feb	Mar	Apr	May	Jun	Jul	Aug	Sep	Oct	Nov	Dec
# % Sat	55			55			55			54		
# % Sat > 50	1			3			5			1		
Pop. Mean	28			29			30			26		
Std. Deviation	10			15			15			9		
% % Sat > 50	2%			5%			9%			2%		



VI. Diabetes

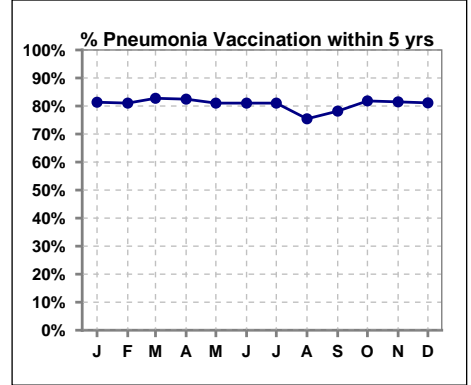
	Jan	Feb	Mar	Apr	May	Jun	Jul	Aug	Sep	Oct	Nov	Dec
# HgA1c	19			19			25			21		
# HgA1c < 7	9			11			14			16		
Pop. Mean	7.0			6.7			6.9			6.4		
Std. Deviation	1.16			1.13			1.37			1.30		
% HgA1c < 7	47%			58%			56%			76%		



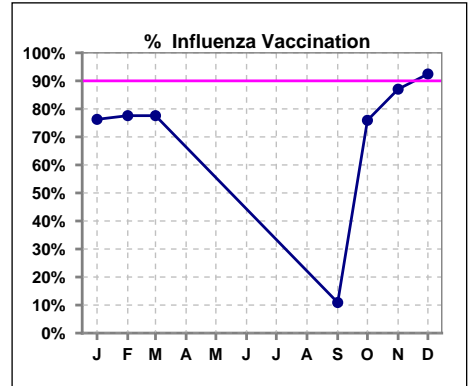
VII. Infection Control

Pneumonia vaccination within the past five years

	Jan	Feb	Mar	Apr	May	Jun	Jul	Aug	Sep	Oct	Nov	Dec
# Patient	59	58	58	57	58	58	58	57	55	55	54	53
# Pneumonia	48	47	48	47	47	47	47	43	43	45	44	43
% Pneumonia	81%	81%	83%	82%	81%	81%	81%	75%	78%	82%	81%	81%



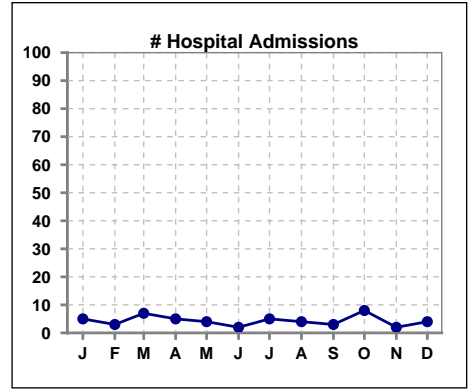
	Jan	Feb	Mar	Apr	May	Jun	Jul	Aug	Sep	Oct	Nov	Dec
# Patient	59	58	58						55	54	54	53
# Influenza	45	45	45						6	41	47	49
% Influenza	76%	78%	78%						11%	76%	87%	92%



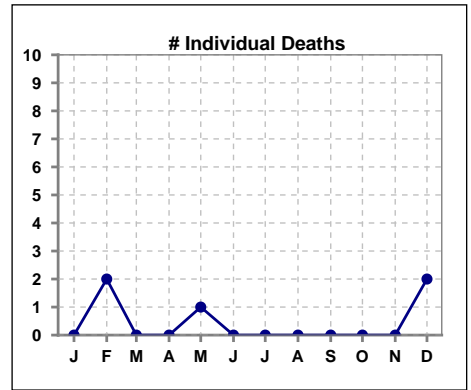
Methodology: a) All labs for 'Adequacy of Dialysis', 'Nutrition', 'Osteodystrophy' and 'Anemia' based on last value of month; b) Access data takes last access of month; c) Values for 'Infection Control' uses most recent result.

VIII. Outcome measures

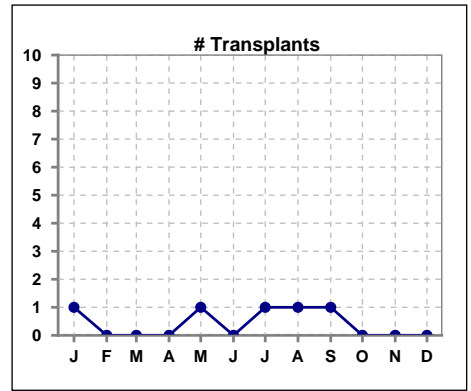
	Jan	Feb	Mar	Apr	May	Jun	Jul	Aug	Sep	Oct	Nov	Dec
# Patient	59	58	58	57	58	58	58	57	55	55	54	53
# Hospital Admissions	5	3	7	5	4	2	5	4	3	8	2	4



	Jan	Feb	Mar	Apr	May	Jun	Jul	Aug	Sep	Oct	Nov	Dec
# Patient	59	58	58	57	58	58	58	57	55	55	54	53
# Individual Deaths	0	2	0	0	1	0	0	0	0	0	0	2



	Jan	Feb	Mar	Apr	May	Jun	Jul	Aug	Sep	Oct	Nov	Dec
# Patient	59	58	58	57	58	58	58	57	55	55	54	53
# Transplants	1	0	0	0	1	0	1	1	1	0	0	0



Methodology: a) All labs for 'Adequacy of Dialysis', 'Nutrition', 'Osteodystrophy' and 'Anemia' based on last value of month; b) Access data takes last access of month; c) Values for 'Infection Control' uses most recent result.