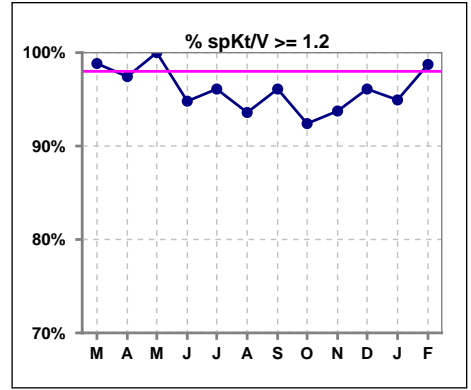
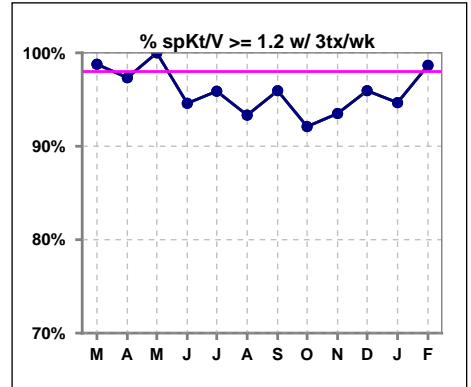


**I. ADEQUACY OF DIALYSIS**

	Mar	Apr	May	Jun	Jul	Aug	Sep	Oct	Nov	Dec	Jan	Feb
# spKt/V	86	78	80	77	77	78	77	79	80	77	79	79
# spKt/V >= 1.2	85	76	80	73	74	73	74	73	75	74	75	78
Pop. Mean	1.67	1.63	1.63	1.54	1.54	1.54	1.54	1.53	1.52	1.55	1.58	1.56
Std. Deviation	0.29	0.27	0.27	0.26	0.27	0.28	0.28	0.30	0.26	0.26	0.33	0.29
% spKt/V >= 1.2	99%	97%	100%	95%	96%	94%	96%	92%	94%	96%	95%	99%

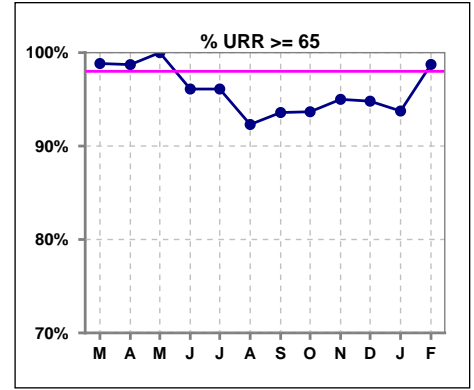


	Mar	Apr	May	Jun	Jul	Aug	Sep	Oct	Nov	Dec	Jan	Feb
# spKt/V w/ 3tx/wk	82	75	77	74	73	75	74	76	77	74	75	75
# spKt/V >= 1.2 w/3tx/wk	81	73	77	70	70	70	71	70	72	71	71	74
Pop. Mean	1.67	1.63	1.62	1.54	1.54	1.54	1.54	1.52	1.51	1.54	1.57	1.55
Std. Deviation	0.29	0.28	0.26	0.26	0.27	0.28	0.28	0.29	0.25	0.24	0.32	0.29
% >= 1.2 w/3tx/wk	99%	97%	100%	95%	96%	93%	96%	92%	94%	96%	95%	99%

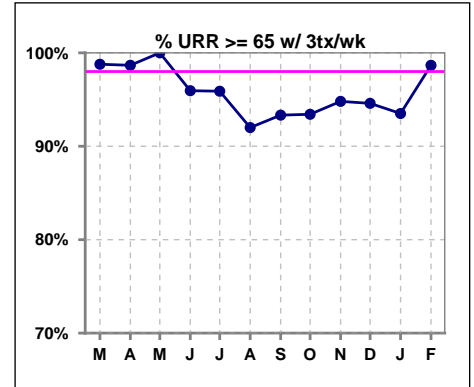


**I. ADEQUACY OF DIALYSIS - CONT.**

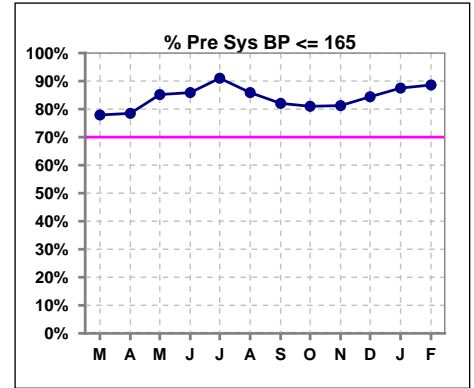
	Mar	Apr	May	Jun	Jul	Aug	Sep	Oct	Nov	Dec	Jan	Feb
# URR	86	78	80	77	77	78	78	79	80	77	80	79
# URR >= 65	85	77	80	74	74	72	73	74	76	73	75	78
Pop. Mean	76	75	75	74	74	73	73	73	73	74	74	74
Std. Deviation	5.43	5.67	5.13	5.58	5.87	6.60	6.83	6.07	5.92	5.38	6.20	5.31
% URR >= 65	99%	99%	100%	96%	96%	92%	94%	94%	95%	95%	94%	99%



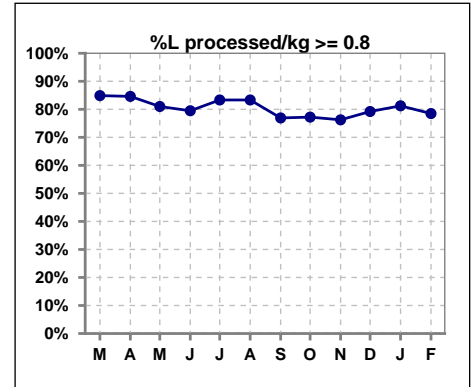
	Mar	Apr	May	Jun	Jul	Aug	Sep	Oct	Nov	Dec	Jan	Feb
# URR w/ 3tx/wk	82	75	77	74	73	75	75	76	77	74	77	75
# URR>=65 w/ 3tx/wk	81	74	77	71	70	69	70	71	73	70	72	74
Pop. Mean	76	75	75	74	74	74	73	73	73	74	74	74
Std. Deviation	5.45	5.70	5.09	5.56	5.99	6.62	6.88	5.89	5.76	5.21	6.07	5.17
% URR>=65 w/ 3tx/wk	99%	99%	100%	96%	96%	92%	93%	93%	95%	95%	94%	99%



	Mar	Apr	May	Jun	Jul	Aug	Sep	Oct	Nov	Dec	Jan	Feb
# Pre Sys BP	86	79	81	78	78	78	78	79	80	77	80	79
# Pre Sys BP <= 165	68	63	72	69	72	68	65	64	68	66	71	71
Pop. Mean	149	150	146	144	143	144	146	147	146	146	144	144
Std. Deviation	19.0	17.7	18.3	18.3	17.9	18.0	18.0	19.3	19.5	17.0	17.3	17.5
% Pre Sys BP <=165	78%	78%	85%	86%	91%	86%	82%	81%	81%	84%	88%	89%



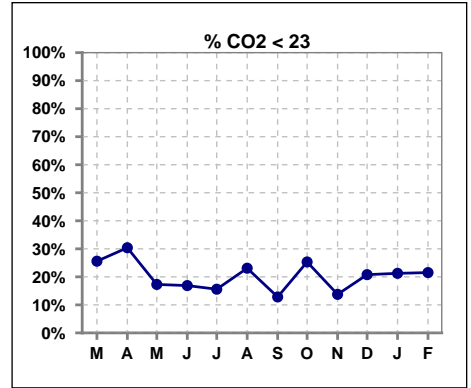
	Mar	Apr	May	Jun	Jul	Aug	Sep	Oct	Nov	Dec	Jan	Feb
# L processed/kg	86	78	79	78	78	78	78	79	80	77	80	79
# L processed/kg>=0.8	73	66	64	62	65	65	60	61	61	61	65	62
Pop. Mean	1	1	1	1	1	1	1	1	1	1	1	1
Std. Deviation	0.3	0.2	0.2	0.2	0.2	0.3	0.3	0.3	0.3	0.2	0.3	0.2
% L processed/kg>=0.8	85%	85%	81%	79%	83%	83%	77%	77%	76%	79%	81%	78%



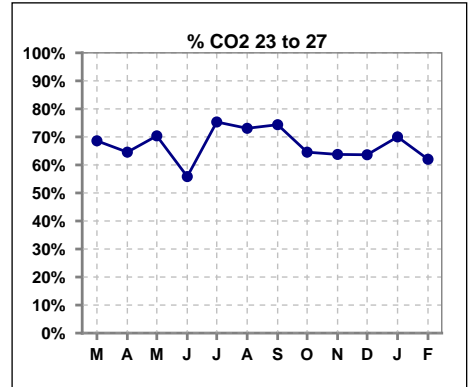
Methodology: a) All labs for 'Adequacy of Dialysis', 'Nutrition', 'Osteodystrophy', 'Anemia' and 'Diabetes' based on last value of month; b) BP's and #L processed are average of all values for month; c) Access data takes last access of month; d) Values for SGA and 'Infection Control' use most recent result.

**I. ADEQUACY OF DIALYSIS - CONT.**

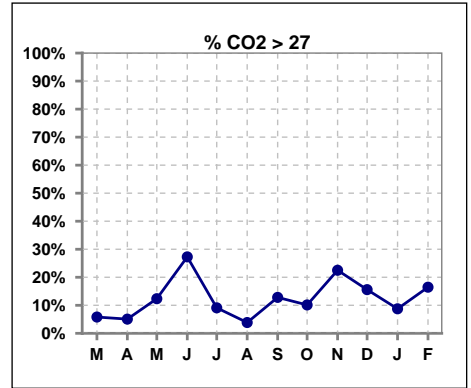
	Mar	Apr	May	Jun	Jul	Aug	Sep	Oct	Nov	Dec	Jan	Feb
# CO2	86	79	81	77	77	78	78	79	80	77	80	79
# CO2 < 23	22	24	14	13	12	18	10	20	11	16	17	17
Pop. Mean	24	24	25	26	25	24	25	24	25	25	25	24
Std. Deviation	2.78	2.38	2.50	2.90	2.50	2.68	2.34	2.76	3.05	2.56	2.75	2.71
% CO2 < 23	26%	30%	17%	17%	16%	23%	13%	25%	14%	21%	21%	22%



	Mar	Apr	May	Jun	Jul	Aug	Sep	Oct	Nov	Dec	Jan	Feb
# CO2	86	79	81	77	77	78	78	79	80	77	80	79
# CO2 23 to 27	59	51	57	43	58	57	58	51	51	49	56	49
Pop. Mean	24	24	25	26	25	24	25	24	25	25	25	24
Std. Deviation	2.78	2.38	2.50	2.90	2.50	2.68	2.34	2.76	3.05	2.56	2.75	2.71
% CO2 23 to 27	69%	65%	70%	56%	75%	73%	74%	65%	64%	64%	70%	62%



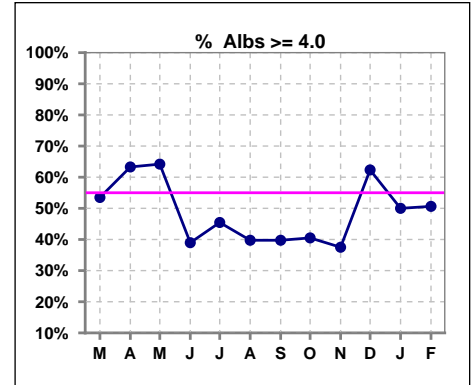
	Mar	Apr	May	Jun	Jul	Aug	Sep	Oct	Nov	Dec	Jan	Feb
# CO2	86	79	81	77	77	78	78	79	80	77	80	79
# CO2 > 27	5	4	10	21	7	3	10	8	18	12	7	13
Pop. Mean	24	24	25	26	25	24	25	24	25	25	25	24
Std. Deviation	2.78	2.38	2.50	2.90	2.50	2.68	2.34	2.76	3.05	2.56	2.75	2.71
% CO2 > 27	6%	5%	12%	27%	9%	4%	13%	10%	23%	16%	9%	16%



\*Albumin values use BCG method - as of July 2001

**II. NUTRITION**

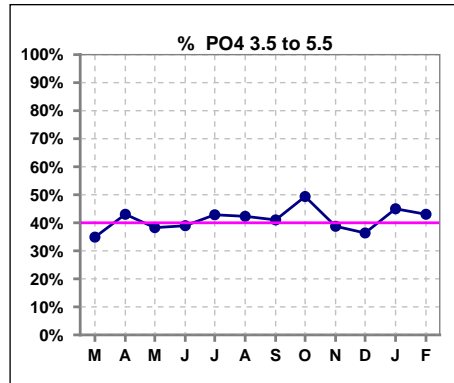
	Mar	Apr	May	Jun	Jul	Aug	Sep	Oct	Nov	Dec	Jan	Feb
# Albumin	86	79	81	77	77	78	78	79	80	77	80	79
# Albumin >= 4.0	46	50	52	30	35	31	31	32	30	48	40	40
Pop. Mean	3.9	3.9	4.0	3.9	3.9	3.8	3.8	3.9	3.8	4.0	3.9	3.9
Std. Deviation	0.43	0.46	0.37	0.45	0.41	0.39	0.38	0.39	0.43	0.38	0.43	0.43
% Alb >= 4.0	53%	63%	64%	39%	45%	40%	40%	41%	38%	62%	50%	51%



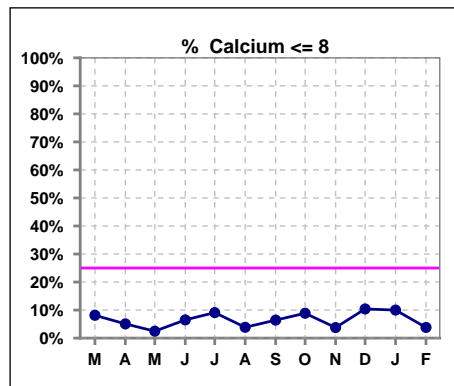
Lab methodology for PTH changed January 2012

**III. OSTEODYSTROPHY**

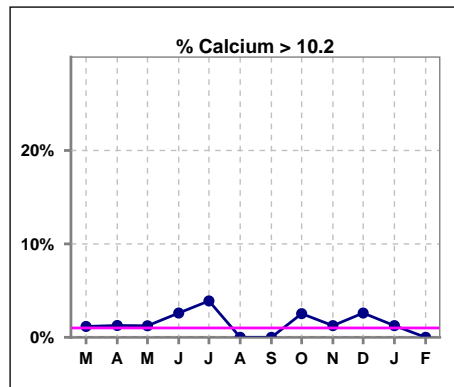
	Mar	Apr	May	Jun	Jul	Aug	Sep	Oct	Nov	Dec	Jan	Feb
# PO4	86	79	81	77	77	78	78	79	80	77	80	79
# PO4 3.5 to 5.5	30	34	31	30	33	33	32	39	31	28	36	34
Pop. Mean	5.9	5.8	5.7	5.9	5.9	5.7	5.6	5.8	5.9	6.0	6.0	6.0
Std. Deviation	1.80	1.93	1.85	1.74	1.77	1.58	1.72	2.16	1.86	1.96	1.73	1.91
% PO4 3.5 to 5.5	35%	43%	38%	39%	43%	42%	41%	49%	39%	36%	45%	43%



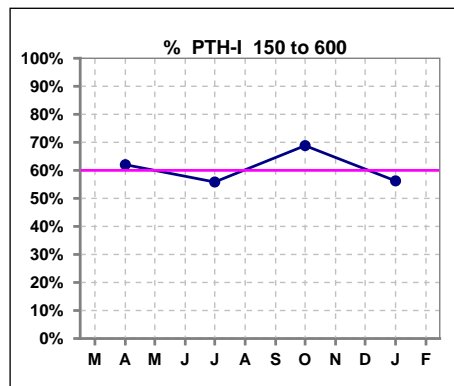
	Mar	Apr	May	Jun	Jul	Aug	Sep	Oct	Nov	Dec	Jan	Feb
# Calcium	86	79	81	77	77	78	78	79	80	77	80	79
# Calcium <= 8	7	4	2	5	7	3	5	7	3	8	8	3
Pop. Mean	9.1	9.2	9.2	9.1	9.1	9.1	9.0	9.0	9.1	9.0	9.0	9.1
Std. Deviation	0.74	0.70	0.61	0.69	0.74	0.61	0.60	0.63	0.62	0.70	0.71	0.62
% Calcium <= 8	8%	5%	2%	6%	9%	4%	6%	9%	4%	10%	10%	4%



	Mar	Apr	May	Jun	Jul	Aug	Sep	Oct	Nov	Dec	Jan	Feb
# Calcium	86	79	81	77	77	78	78	79	80	77	80	79
# Calcium > 10.2	1	1	1	2	3	0	0	2	1	2	1	0
Pop. Mean	9.1	9.2	9.2	9.1	9.1	9.1	9.0	9.0	9.1	9.0	9.0	9.1
Std. Deviation	0.74	0.70	0.61	0.69	0.74	0.61	0.60	0.63	0.62	0.70	0.71	0.62
% Calcium > 10.2	1%	1%	1%	3%	4%	0%	0%	3%	1%	3%	1%	0%



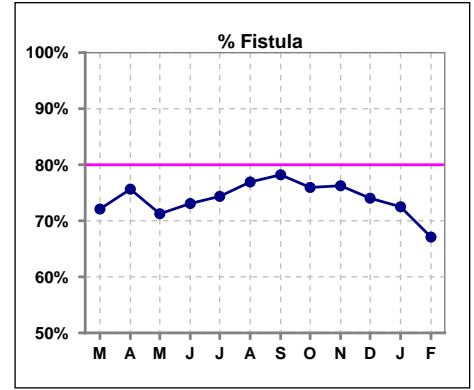
	Mar	Apr	May	Jun	Jul	Aug	Sep	Oct	Nov	Dec	Jan	Feb
# PTH-I		79			77			77			80	
# PTH-I 150 to 600		49			43			53			45	
Pop. Mean		471			560			444			508	
Std. Deviation		357			402			313			374	
% PTH-I 150 to 600		62%			56%			69%			56%	



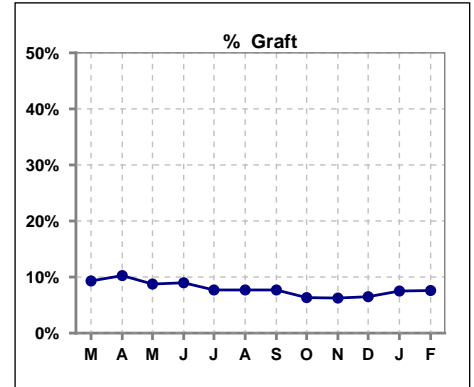
Methodology: a) All labs for 'Adequacy of Dialysis', 'Nutrition', 'Osteodystrophy', 'Anemia' and 'Diabetes' based on last value of month; b) BP's and #L processed are average of all values for month; c) Access data takes last access of month; d) Values for SGA and 'Infection Control' use most recent result.

**IV. ACCESS**

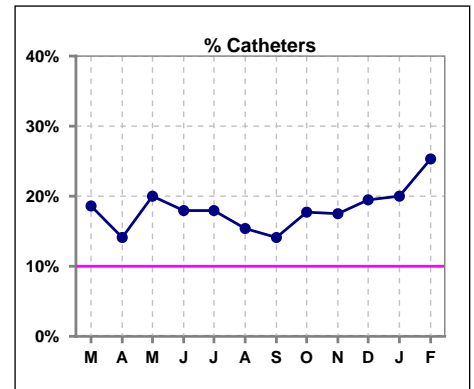
	Mar	Apr	May	Jun	Jul	Aug	Sep	Oct	Nov	Dec	Jan	Feb
# Access	86	78	80	78	78	78	78	79	80	77	80	79
# Fistula	62	59	57	57	58	60	61	60	61	57	58	53
% Fistula	72%	76%	71%	73%	74%	77%	78%	76%	76%	74%	73%	67%



	Mar	Apr	May	Jun	Jul	Aug	Sep	Oct	Nov	Dec	Jan	Feb
# Access	86	78	80	78	78	78	78	79	80	77	80	79
# Graft	8	8	7	7	6	6	6	5	5	5	6	6
% Graft	9%	10%	9%	9%	8%	8%	8%	6%	6%	6%	8%	8%



	Mar	Apr	May	Jun	Jul	Aug	Sep	Oct	Nov	Dec	Jan	Feb
# Access	86	78	80	78	78	78	78	79	80	77	80	79
# Catheters	16	11	16	14	14	12	11	14	14	15	16	20
% Catheters	19%	14%	20%	18%	18%	15%	14%	18%	18%	19%	20%	25%



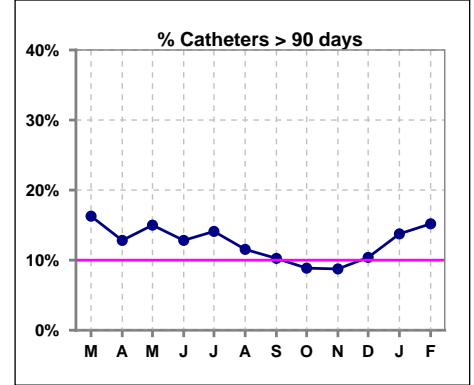
Methodology: a) All labs for 'Adequacy of Dialysis', 'Nutrition', 'Osteodystrophy', 'Anemia' and 'Diabetes' based on last value of month; b) BP's and #L processed are average of all values for month; c) Access data takes last access of month; d) Values for SGA and 'Infection Control' use most recent result.

**IV. ACCESS - CONT.**

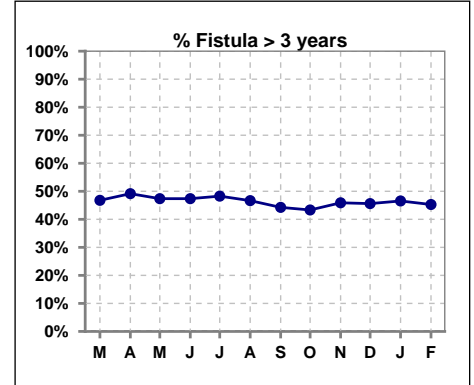
**Catheters > 90 days**

	Mar	Apr	May	Jun	Jul	Aug	Sep	Oct	Nov	Dec	Jan	Feb
# Access	86	78	80	78	78	78	78	79	80	77	80	79
# Catheters	14	10	12	10	11	9	8	7	7	8	11	12
% Catheters	16%	13%	15%	13%	14%	12%	10%	9%	9%	10%	14%	15%

Definition: Catheter in use on last treatment of the month



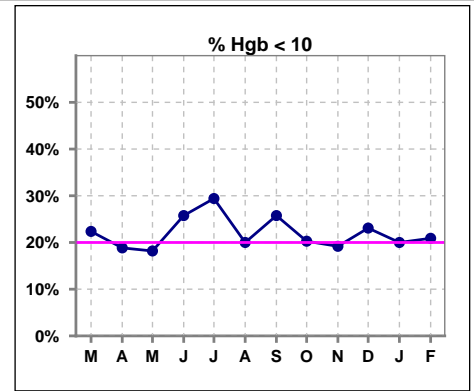
	Mar	Apr	May	Jun	Jul	Aug	Sep	Oct	Nov	Dec	Jan	Feb
# Fistula	62	59	57	57	58	60	61	60	61	57	58	53
# Fistula > 3 yrs	29	29	27	27	28	28	27	26	28	26	27	24
% Fistula > 3 yrs	47%	49%	47%	47%	48%	47%	44%	43%	46%	46%	47%	45%



**V. ANEMIA**

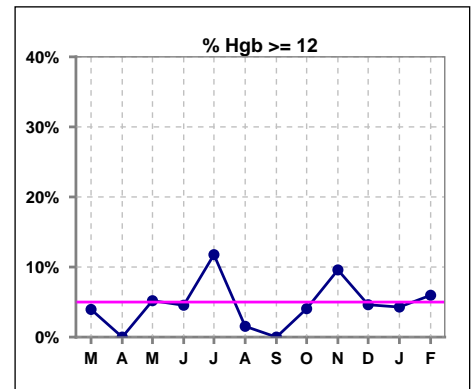
	Mar	Apr	May	Jun	Jul	Aug	Sep	Oct	Nov	Dec	Jan	Feb
# Hgb	76	69	77	66	68	65	66	74	73	65	70	67
# Hgb < 10	17	13	14	17	20	13	17	15	14	15	14	14
Pop. Mean	10.7	10.7	10.7	10.5	10.6	10.6	10.4	10.5	10.8	10.5	10.5	10.6
Std. Deviation	1.1	0.9	1.2	1.2	1.4	1.0	1.0	1.2	1.3	1.2	1.1	1.1
% Hgb < 10	22%	19%	18%	26%	29%	20%	26%	20%	19%	23%	20%	21%

Note: Excludes patients who received no ESA in month.



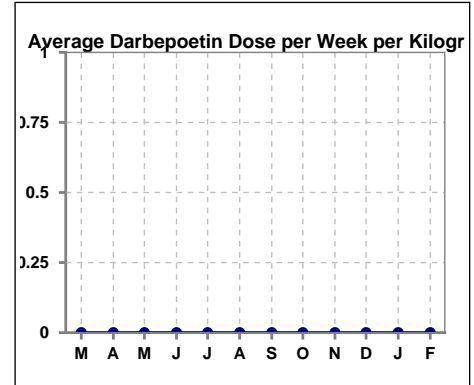
	Mar	Apr	May	Jun	Jul	Aug	Sep	Oct	Nov	Dec	Jan	Feb
# Hgb	76	69	77	66	68	65	66	74	73	65	70	67
# Hgb >= 12	3	0	4	3	8	1	0	3	7	3	3	4
Pop. Mean	10.7	10.7	10.7	10.5	10.6	10.6	10.4	10.5	10.8	10.5	10.5	10.6
Std. Deviation	1.1	0.9	1.2	1.2	1.4	1.0	1.0	1.2	1.3	1.2	1.1	1.1
% Hgb >= 12	4%	0%	5%	5%	12%	2%	0%	4%	10%	5%	4%	6%

Note: Excludes patients who received no ESA in month.



**Average Darbepoetin Dose per Week per Kilogram**

	Mar	Apr	May	Jun	Jul	Aug	Sep	Oct	Nov	Dec	Jan	Feb
# Average Darbepoetin	0	0	0	0	0	0	0	0	0	0	0	0

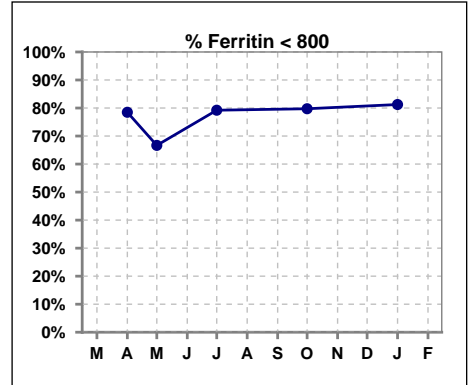




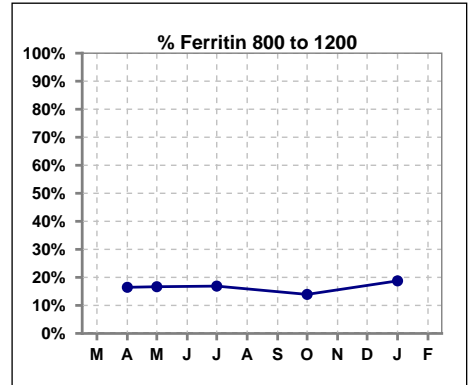
**V. ANEMIA - CONT.**

**Iron Profile**

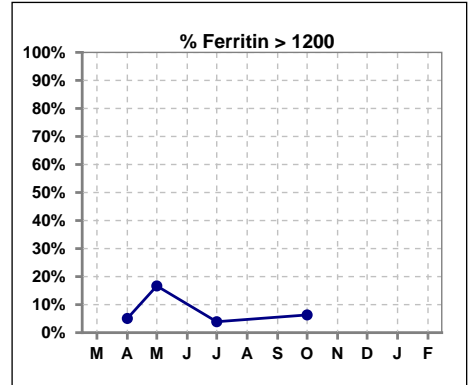
	Mar	Apr	May	Jun	Jul	Aug	Sep	Oct	Nov	Dec	Jan	Feb
# Ferritin		79	6		77			79			80	
# Ferritin < 800		62	4		61			63			65	
Pop. Mean		543	660		491			534			431	
Std. Deviation		348	482		367			539			325	
<b>% Ferritin &lt; 800</b>		<b>78%</b>	<b>67%</b>		<b>79%</b>			<b>80%</b>			<b>81%</b>	



	Mar	Apr	May	Jun	Jul	Aug	Sep	Oct	Nov	Dec	Jan	Feb
# Ferritin		79	6		77			79			80	
# Ferritin 800 to 1200		13	1		13			11			15	
Pop. Mean		543	660		491			534			431	
Std. Deviation		348	482		367			539			325	
<b>% Ferritin 800 to 1200</b>		<b>16%</b>	<b>17%</b>		<b>17%</b>			<b>14%</b>			<b>19%</b>	

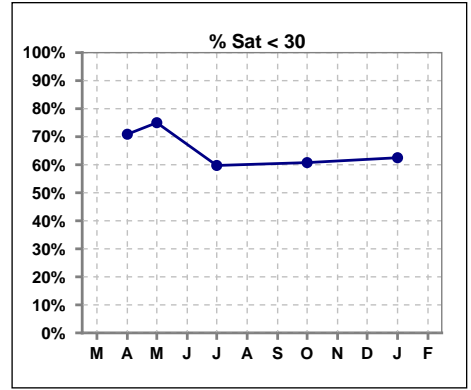


	Mar	Apr	May	Jun	Jul	Aug	Sep	Oct	Nov	Dec	Jan	Feb
# Ferritin		79	6		77			79			80	
# Ferritin > 1200		4	1		3			5				
Pop. Mean		543	660		491			534			431	
Std. Deviation		348	482		367			539			325	
<b>% Ferritin &gt; 1200</b>		<b>5%</b>	<b>17%</b>		<b>4%</b>			<b>6%</b>				

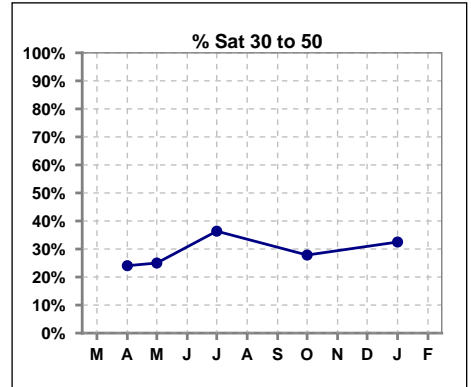


**V. ANEMIA - CONT.**

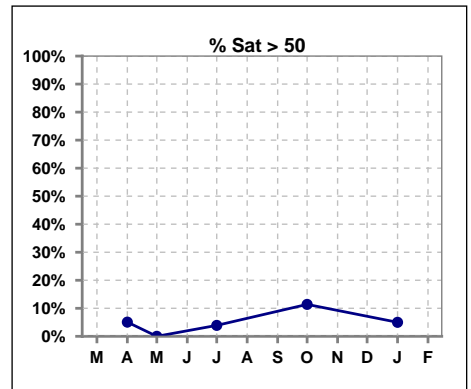
	Mar	Apr	May	Jun	Jul	Aug	Sep	Oct	Nov	Dec	Jan	Feb
# % Sat		79	8		77			79			80	
# % Sat < 30		56	6		46			48			50	
Pop. Mean		27	19		28			30			28	
Std. Deviation		16	10		13			16			13	
<b>% % Sat &lt; 30</b>		<b>71%</b>	<b>75%</b>		<b>60%</b>			<b>61%</b>			<b>63%</b>	



	Mar	Apr	May	Jun	Jul	Aug	Sep	Oct	Nov	Dec	Jan	Feb
# % Sat		79	8		77			79			80	
# % Sat 30 to 50		19	2		28			22			26	
Pop. Mean		27	19		28			30			28	
Std. Deviation		16	10		13			16			13	
<b>% % Sat 30 to 50</b>		<b>24%</b>	<b>25%</b>		<b>36%</b>			<b>28%</b>			<b>33%</b>	

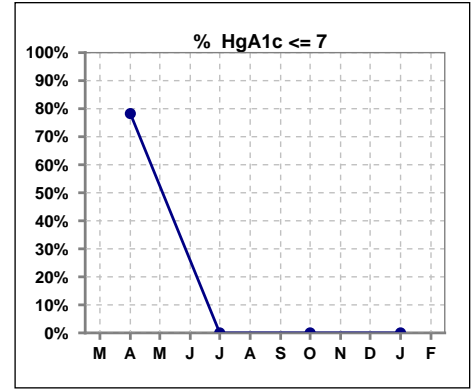


	Mar	Apr	May	Jun	Jul	Aug	Sep	Oct	Nov	Dec	Jan	Feb
# % Sat		79	8		77			79			80	
# % Sat > 50		4	0		3			9			4	
Pop. Mean		27	19		28			30			28	
Std. Deviation		16	10		13			16			13	
<b>% % Sat &gt; 50</b>		<b>5%</b>	<b>0%</b>		<b>4%</b>			<b>11%</b>			<b>5%</b>	



**VI. Diabetes**

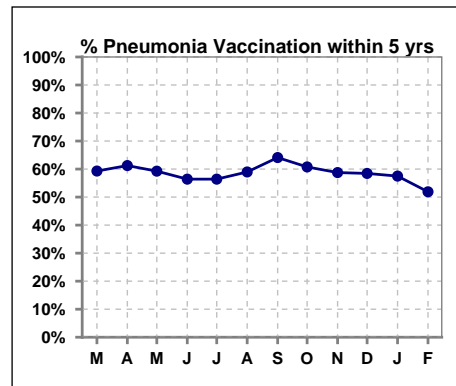
	Mar	Apr	May	Jun	Jul	Aug	Sep	Oct	Nov	Dec	Jan	Feb
# HgA1c		46			0			0			0	
# HgA1c <= 7		36			0			0			0	
Pop. Mean		6.1			0			0			0	
Std. Deviation		1.52			0			0			0	
<b>% HgA1c &lt;= 7</b>		<b>78%</b>			<b>0%</b>			<b>0%</b>			<b>0%</b>	



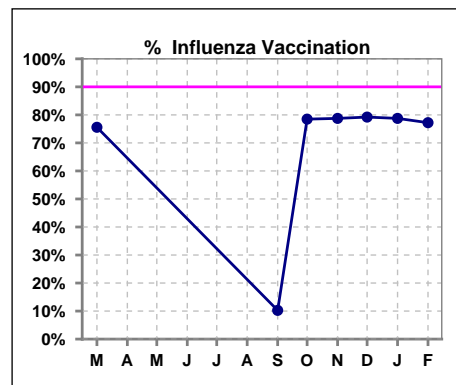
**VII. Infection Control**

**Pneumonia vaccination within the past five years**

	Mar	Apr	May	Jun	Jul	Aug	Sep	Oct	Nov	Dec	Jan	Feb
# Patient	86	80	81	78	78	78	78	79	80	77	80	79
# Pneumonia	51	49	48	44	44	46	50	48	47	45	46	41
% Pneumonia	59%	61%	59%	56%	56%	59%	64%	61%	59%	58%	58%	52%



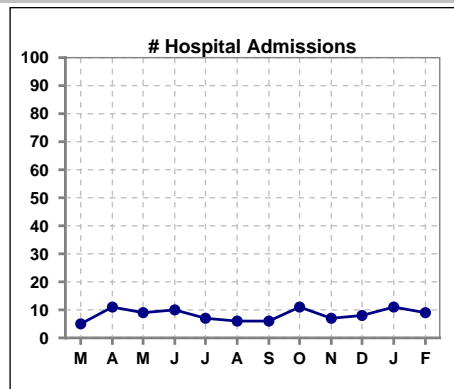
	Mar	Apr	May	Jun	Jul	Aug	Sep	Oct	Nov	Dec	Jan	Feb
# Patient	86						78	79	80	77	80	79
# Influenza	65						8	62	63	61	63	61
% Influenza	76%						10%	78%	79%	79%	79%	77%



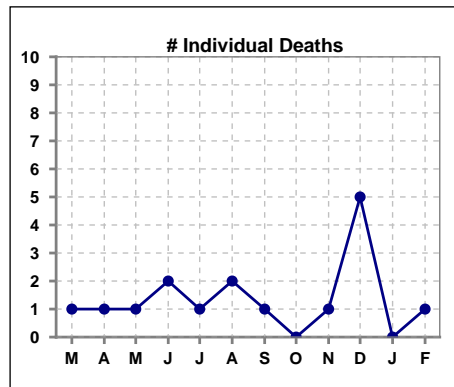
Methodology: a) All labs for 'Adequacy of Dialysis', 'Nutrition', 'Osteodystrophy', 'Anemia' and 'Diabetes' based on last value of month; b) BP's and #L processed are average of all values for month; c) Access data takes last access of month; d) Values for SGA and 'Infection Control' use most recent result.

**VIII. Outcome measures**

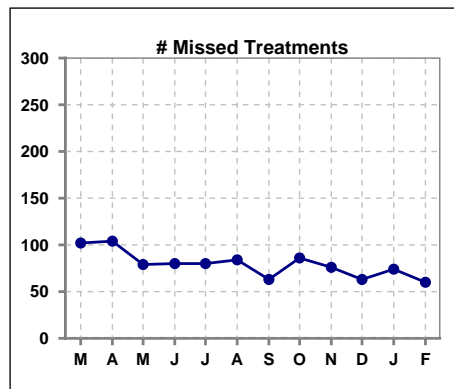
	Mar	Apr	May	Jun	Jul	Aug	Sep	Oct	Nov	Dec	Jan	Feb
# Patient	86	80	81	78	78	78	78	79	80	77	80	79
# Hospital Admissions	5	11	9	10	7	6	6	11	7	8	11	9



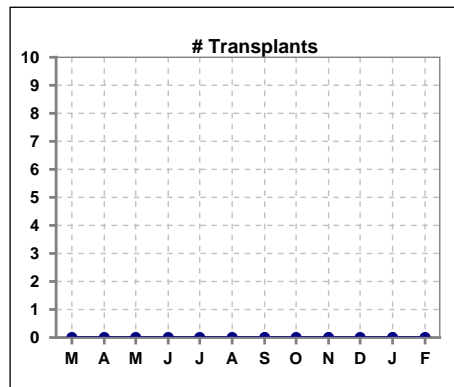
	Mar	Apr	May	Jun	Jul	Aug	Sep	Oct	Nov	Dec	Jan	Feb
# Patient	86	80	81	78	78	78	78	79	80	77	80	79
# Individual Deaths	1	1	1	2	1	2	1	0	1	5	0	1



	Mar	Apr	May	Jun	Jul	Aug	Sep	Oct	Nov	Dec	Jan	Feb
# Patient	86	80	81	78	78	78	78	79	80	77	80	79
# Missed Treatments	102	104	79	80	80	84	63	86	76	63	74	60



	Mar	Apr	May	Jun	Jul	Aug	Sep	Oct	Nov	Dec	Jan	Feb
# Patient	86	80	81	78	78	78	78	79	80	77	80	79
# Transplants	0	0	0	0	0	0	0	0	0	0	0	0



Methodology: a) All labs for 'Adequacy of Dialysis', 'Nutrition', 'Osteodystrophy', 'Anemia' and 'Diabetes' based on last value of month; b) BP's and #L processed are average of all values for month; c) Access data takes last access of month; d) Values for SGA and 'Infection Control' use most recent result.