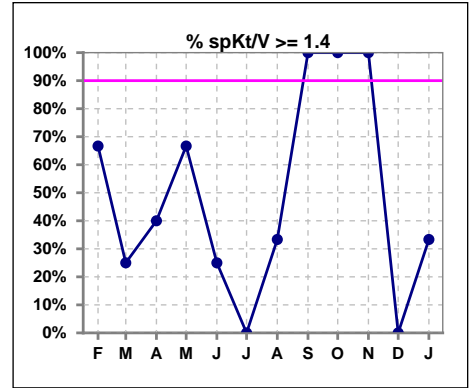
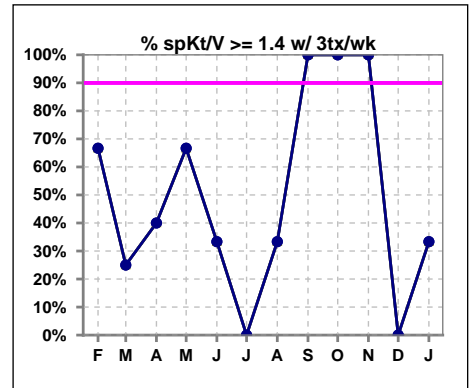


## I. ADEQUACY OF DIALYSIS

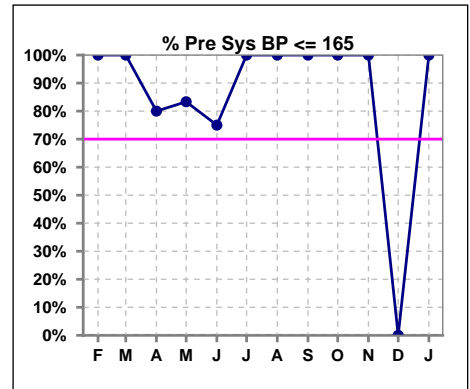
	Feb	Mar	Apr	May	Jun	Jul	Aug	Sep	Oct	Nov	Dec	Jan
# spKt/V	3	4	5	6	4	1	3	1	1	1	0	3
# spKt/V >= 1.4	2	1	2	4	1	0	1	1	1	1	0	1
Pop. Mean	1.40	1.04	1.38	1.54	1.10	1.25	1.16	1.93	1.78	1.56	0	1.24
Std. Deviation	0.04	0.28	0.32	0.23	0.46	0	0.30	0	0	0	0	0.15
% spKt/V >= 1.4	67%	25%	40%	67%	25%	0%	33%	100%	100%	100%	0%	33%
% spKt/V >= 1.2	100%	25%	60%	100%	25%	100%	33%	100%	100%	100%	0%	67%



	Feb	Mar	Apr	May	Jun	Jul	Aug	Sep	Oct	Nov	Dec	Jan
# spKt/V w/ 3tx/wk	3	4	5	6	3	1	3	1	1	1	0	3
# spKt/V >= 1.4 w/3tx/wk	2	1	2	4	1	0	1	1	1	1	0	1
Pop. Mean	1.40	1.04	1.38	1.54	1.28	1.25	1.16	1.93	1.78	1.56	0	1.24
Std. Deviation	0.04	0.28	0.32	0.23	0.34	0	0.30	0	0	0	0	0.15
% spKt/V >= 1.4 w/3tx/wk	67%	25%	40%	67%	33%	0%	33%	100%	100%	100%	0%	33%



	Feb	Mar	Apr	May	Jun	Jul	Aug	Sep	Oct	Nov	Dec	Jan
# Pre Sys BP	3	4	5	6	4	1	3	1	1	1	0	4
# Pre Sys BP <= 165	3	4	4	5	3	1	3	1	1	1	0	4
Pop. Mean	143	141	152	153	147	120	121	140	133	163	0	142
Std. Deviation	15.9	15.8	21.7	14.9	22.8	0	15.6	0	0	0	0	15.5
% Pre Sys BP <= 165	100%	100%	80%	83%	75%	100%	100%	100%	100%	100%	0%	100%



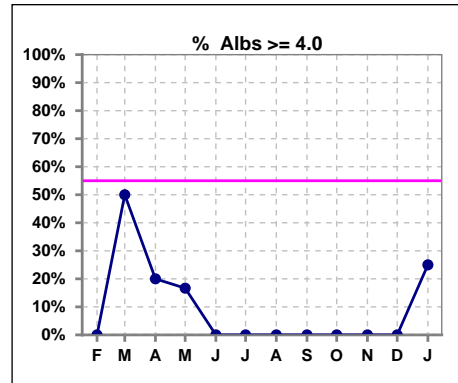
**Federal Way East Kidney Center - Center Hemodialysis**  
**Quality Assurance Reports (Patients in first 90 days of treatment)**  
Through period ending Jan. 31, 2026

2

\*Albumin values use BCG method - as of July 2001

## II. NUTRITION

	Feb	Mar	Apr	May	Jun	Jul	Aug	Sep	Oct	Nov	Dec	Jan
# Albumin	3	4	5	6	4	1	3	1	1	1	0	4
# Albumin >= 4.0	0	2	1	1	0	0	0	0	0	0	0	1
Pop. Mean	3.7	3.7	3.6	3.6	3.6	3.7	3.1	3.4	3.5	2.9	0	3.1
Std. Deviation	0.40	0.56	0.42	0.38	0.37	0	0.82	0	0	0	0	0.85
% Alb >= 4.0	0%	50%	20%	17%	0%	0%	0%	0%	0%	0%	0%	25%

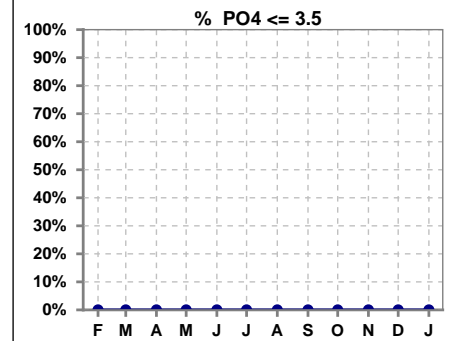


Methodology: a) All labs for 'Adequacy of Dialysis', 'Nutrition', 'Osteodystrophy', 'Anemia' and 'Diabetes' based on last value of month; b) BP's and #L processed are average of all values for month; c) Access data takes last access of month; d) Values for SGA and 'Infection Control' use most recent result.

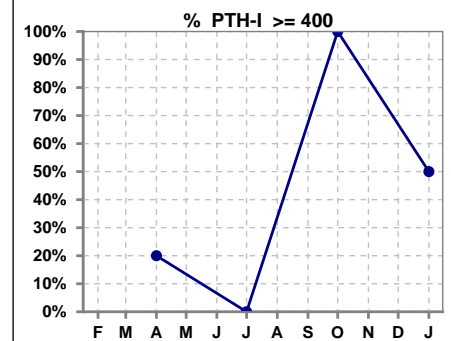
Lab methodology for PTH changed January 2012

### III. OSTEODYSTROPHY

	Feb	Mar	Apr	May	Jun	Jul	Aug	Sep	Oct	Nov	Dec	Jan
# PO4	3	4	5	6	4	1	3	1	1	1	0	4
# PO4 <= 3.5	0	0	0	0	0	0	0	0	0	0	0	0
Pop. Mean	5.5	5.4	5.4	5.7	6.1	6.3	4.6	3.7	5.8	4.0	0	4.2
Std. Deviation	0.80	1.27	1.20	1.30	1.85	0	0.35	0	0	0	0	0.50
% PO4 <= 3.5	0%	0%	0%	0%	0%	0%	0%	0%	0%	0%	0%	0%



	Feb	Mar	Apr	May	Jun	Jul	Aug	Sep	Oct	Nov	Dec	Jan
# PTH-I			5			1			1			4
# PTH-I >= 400			1			0			1			2
Pop. Mean			381			365			470			695
Std. Deviation			282			0			0			848
% PTH-I >= 400			20%			0%			100%			50%

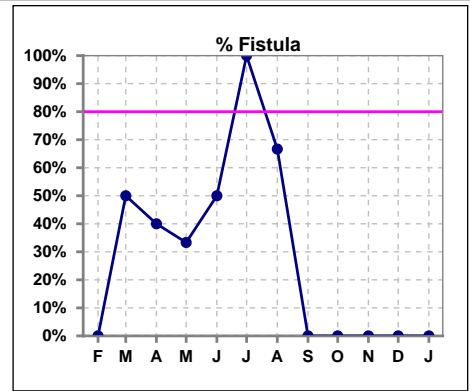


**Federal Way East Kidney Center - Center Hemodialysis**  
**Quality Assurance Reports (Patients in first 90 days of treatment)**  
 Through period ending Jan. 31, 2026

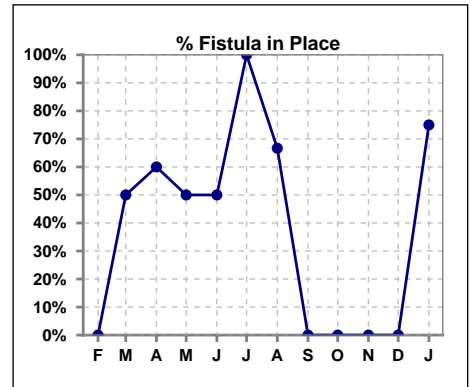
4

**IV. ACCESS**

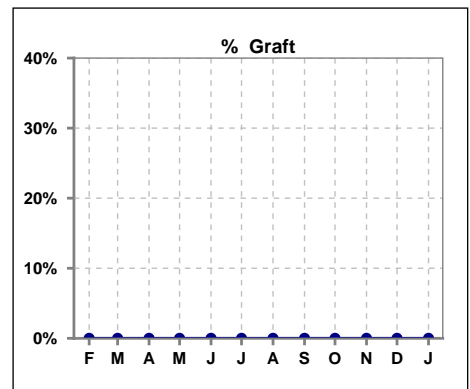
	Feb	Mar	Apr	May	Jun	Jul	Aug	Sep	Oct	Nov	Dec	Jan
# Access	3	4	5	6	4	1	3	1	1	1	0	4
# Fistula	0	2	2	2	2	1	2	0	0	0	0	0
% Fistula	0%	50%	40%	33%	50%	100%	67%	0%	0%	0%	0%	0%



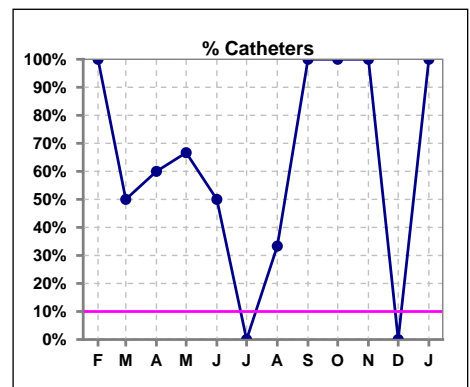
	Feb	Mar	Apr	May	Jun	Jul	Aug	Sep	Oct	Nov	Dec	Jan
# Patient	3	4	5	6	4	1	3	1	1	1	0	4
# Fistula in Place	0	2	3	3	2	1	2	0	0	0	0	3
% Fistula in Place	0%	50%	60%	50%	50%	100%	67%	0%	0%	0%	0%	75%



	Feb	Mar	Apr	May	Jun	Jul	Aug	Sep	Oct	Nov	Dec	Jan
# Access	3	4	5	6	4	1	3	1	1	1	0	4
# Graft	0	0	0	0	0	0	0	0	0	0	0	0
% Graft	0%	0%	0%	0%	0%	0%	0%	0%	0%	0%	0%	0%



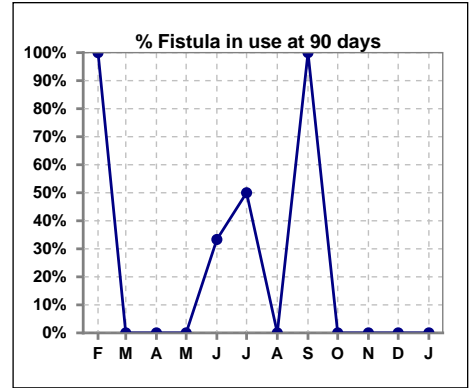
	Feb	Mar	Apr	May	Jun	Jul	Aug	Sep	Oct	Nov	Dec	Jan
# Access	3	4	5	6	4	1	3	1	1	1	0	4
# Catheters	3	2	3	4	2	0	1	1	1	1	0	4
% Catheters	100%	50%	60%	67%	50%	0%	33%	100%	100%	100%	0%	100%



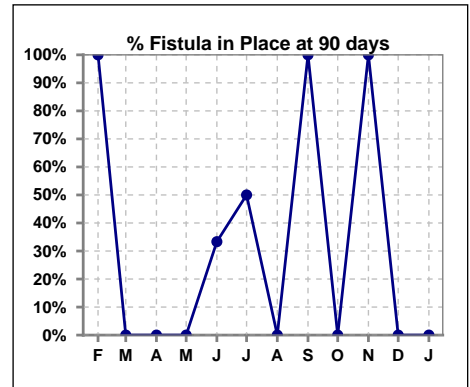
Methodology: a) All labs for 'Adequacy of Dialysis', 'Nutrition', 'Osteodystrophy', 'Anemia' and 'Diabetes' based on last value of month; b) BP's and #L processed are average of all values for month; c) Access data takes last access of month; d) Values for SGA and 'Infection Control' use most recent result.

**IV. ACCESS - CONT. Access at 90 days for those patients that reached 90 days within the month.**

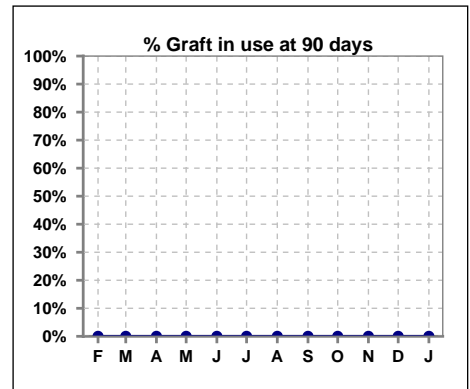
	Feb	Mar	Apr	May	Jun	Jul	Aug	Sep	Oct	Nov	Dec	Jan
# Patient	2	1	0	1	3	2	1	2	0	1	0	1
# Fistula in use	2	0	0	0	1	1	0	2	0	0	0	0
% Fistula in use	100%	0%	0%	0%	33%	50%	0%	100%	0%	0%	0%	0%



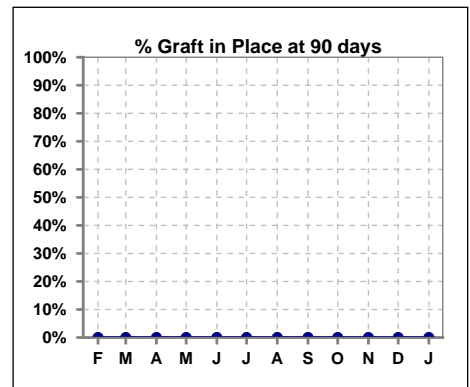
	Feb	Mar	Apr	May	Jun	Jul	Aug	Sep	Oct	Nov	Dec	Jan
# Patient	2	1	0	1	3	2	1	2	0	1	0	1
# Fistula in Place	2	0	0	0	1	1	0	2	0	1	0	0
% Fistula in Place	100%	0%	0%	0%	33%	50%	0%	100%	0%	100%	0%	0%



	Feb	Mar	Apr	May	Jun	Jul	Aug	Sep	Oct	Nov	Dec	Jan
# Patient	2	1	0	1	3	2	1	2	0	1	0	1
# Graft in use	0	0	0	0	0	0	0	0	0	0	0	0
% Graft in use	0%	0%	0%	0%	0%	0%	0%	0%	0%	0%	0%	0%

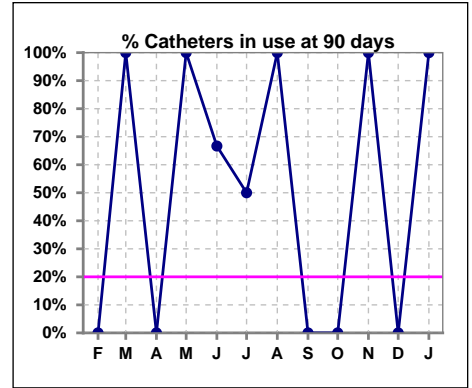


	Feb	Mar	Apr	May	Jun	Jul	Aug	Sep	Oct	Nov	Dec	Jan
# Patient	2	1	0	1	3	2	1	2	0	1	0	1
# Graft in Place	0	0	0	0	0	0	0	0	0	0	0	0
% Graft in Place	0%	0%	0%	0%	0%	0%	0%	0%	0%	0%	0%	0%

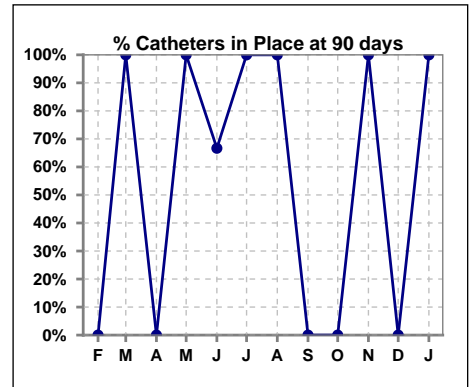


**IV. ACCESS - CONT. Access at 90 days for those patients that reached 90 days within the month.**

	Feb	Mar	Apr	May	Jun	Jul	Aug	Sep	Oct	Nov	Dec	Jan
# Patient	2	1	0	1	3	2	1	2	0	1	0	1
# Catheters in use	0	1	0	1	2	1	1	0	0	1	0	1
% Catheters in use	0%	100%	0%	100%	67%	50%	100%	0%	0%	100%	0%	100%

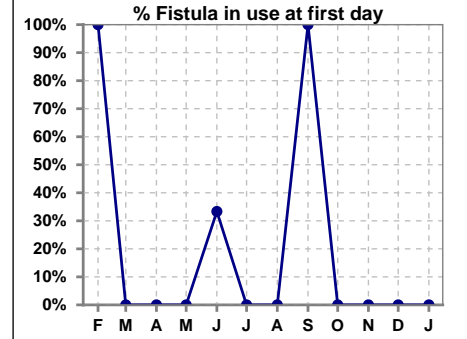


	Feb	Mar	Apr	May	Jun	Jul	Aug	Sep	Oct	Nov	Dec	Jan
# Patient	2	1	0	1	3	2	1	2	0	1	0	1
# Catheters in Place	0	1	0	1	2	2	1	0	0	1	0	1
% Catheters in Place	0%	100%	0%	100%	67%	100%	100%	0%	0%	100%	0%	100%

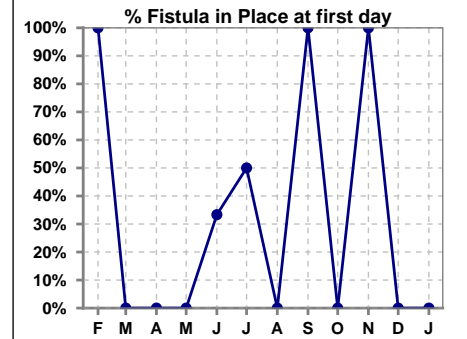


**IV. ACCESS - CONT. Access at first day for those patients that reached 90 days within the month.**

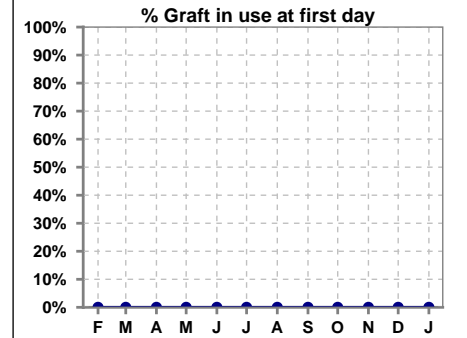
	Feb	Mar	Apr	May	Jun	Jul	Aug	Sep	Oct	Nov	Dec	Jan
# Patient	2	1	0	1	3	1	1	2	0	1	0	1
# Fistula in use	2	0	0	0	1	0	0	2	0	0	0	0
% Fistula in use	100%	0%	0%	0%	33%	0%	0%	100%	0%	0%	0%	0%



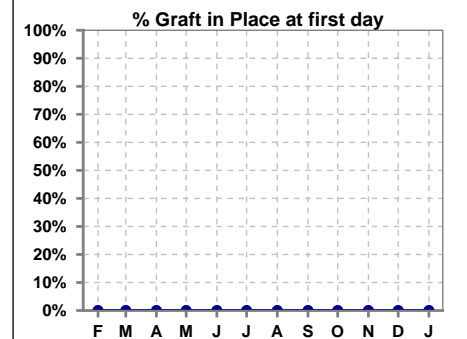
	Feb	Mar	Apr	May	Jun	Jul	Aug	Sep	Oct	Nov	Dec	Jan
# Patient	2	1	0	1	3	2	1	2	0	1	0	1
# Fistula in Place	2	0	0	0	1	1	0	2	0	1	0	0
% Fistula in Place	100%	0%	0%	0%	33%	50%	0%	100%	0%	100%	0%	0%



	Feb	Mar	Apr	May	Jun	Jul	Aug	Sep	Oct	Nov	Dec	Jan
# Patient	2	1	0	1	3	1	1	2	0	1	0	1
# Graft in use	0	0	0	0	0	0	0	0	0	0	0	0
% Graft in use	0%	0%	0%	0%	0%	0%	0%	0%	0%	0%	0%	0%

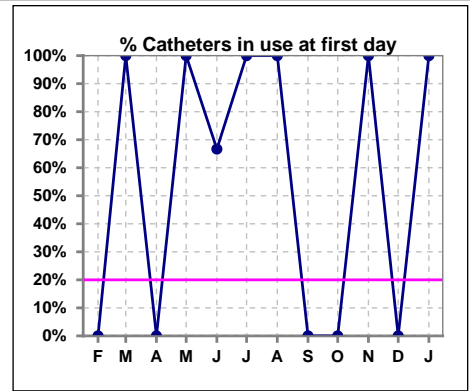


	Feb	Mar	Apr	May	Jun	Jul	Aug	Sep	Oct	Nov	Dec	Jan
# Patient	2	1	0	1	3	2	1	2	0	1	0	1
# Graft in Place	0	0	0	0	0	0	0	0	0	0	0	0
% Graft in Place	0%	0%	0%	0%	0%	0%	0%	0%	0%	0%	0%	0%

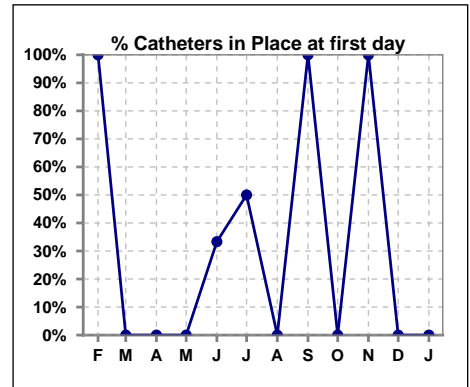


**IV. ACCESS - CONT. Access at first day for those patients that reached 90 days within the month.**

	Feb	Mar	Apr	May	Jun	Jul	Aug	Sep	Oct	Nov	Dec	Jan
# Patient	2	1	0	1	3	1	1	2	0	1	0	1
# Catheters in use	0	1	0	1	2	1	1	0	0	1	0	1
% Catheters in use	0%	100%	0%	100%	67%	100%	100%	0%	0%	100%	0%	100%



	Feb	Mar	Apr	May	Jun	Jul	Aug	Sep	Oct	Nov	Dec	Jan
# Patient	2	1	0	1	3	2	1	2	0	1	0	1
# Catheters in Place	2	0	0	0	1	1	0	2	0	1	0	0
% Catheters in Place	100%	0%	0%	0%	33%	50%	0%	100%	0%	100%	0%	0%





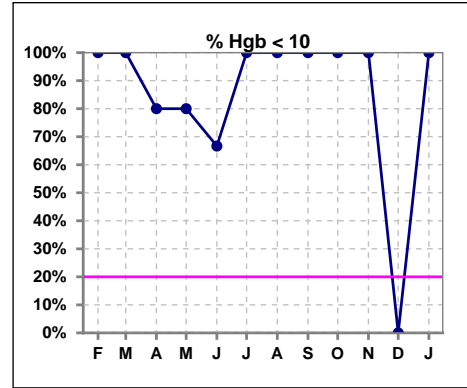
**Federal Way East Kidney Center - Center Hemodialysis**  
**Quality Assurance Reports (Patients in first 90 days of treatment)**  
Through period ending Jan. 31, 2026

9

**V. ANEMIA**

	Feb	Mar	Apr	May	Jun	Jul	Aug	Sep	Oct	Nov	Dec	Jan
# Hgb	2	4	5	5	3	1	2	1	1	1	0	2
# Hgb <= 10	2	4	4	4	2	1	2	1	1	1	0	2
Pop. Mean	8.9	9.0	9.5	9.7	9.8	7.7	9.3	7.8	9.0	9.5	0	9.4
Std. Deviation	0.6	0.9	1.3	1.3	1.3	0	0.8	0	0	0	0	0.2
% Hgb <= 10	100%	100%	80%	80%	67%	100%	100%	100%	100%	100%	0%	100%

Note: Excludes patients who received no ESA in month.



	Feb	Mar	Apr	May	Jun	Jul	Aug	Sep	Oct	Nov	Dec	Jan
# Hgb	2	4	5	5	3	1	2	1	1	1	0	2
# Hgb >= 12	0	0	0	0	0	0	0	0	0	0	0	0
Pop. Mean	8.9	9.0	9.5	9.7	9.8	7.7	9.3	7.8	9.0	9.5	0	9.4
Std. Deviation	0.6	0.9	1.3	1.3	1.3	0	0.8	0	0	0	0	0.2
% Hgb >= 12	0%	0%	0%	0%	0%	0%	0%	0%	0%	0%	0%	0%

Note: Excludes patients who received no ESA in month.

