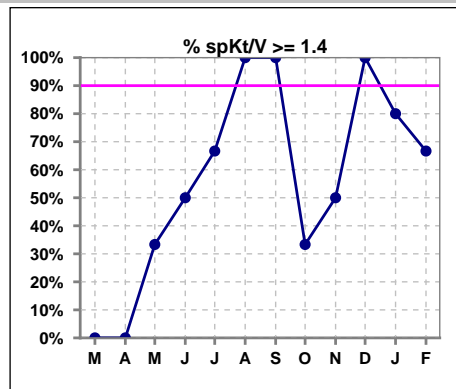
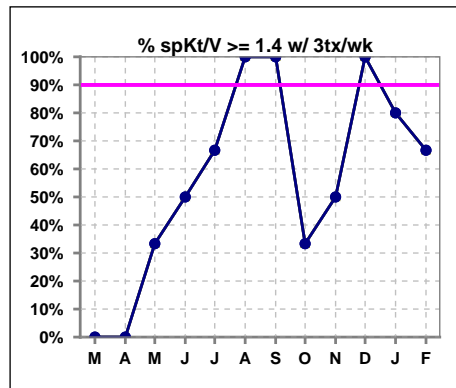


**I. ADEQUACY OF DIALYSIS**

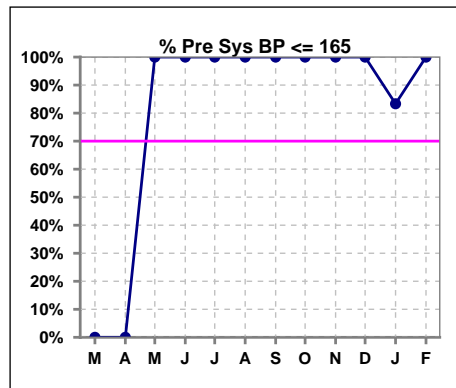
	Mar	Apr	May	Jun	Jul	Aug	Sep	Oct	Nov	Dec	Jan	Feb
# spKt/V	0	0	3	4	3	2	3	3	4	3	5	3
# spKt/V >= 1.4	0	0	1	2	2	2	3	1	2	3	4	2
Pop. Mean	0	0	1.40	1.31	1.28	1.55	1.46	1.36	1.34	1.54	1.78	1.40
Std. Deviation	0	0	0.21	0.20	0.43	0.01	0.03	0.10	0.13	0.03	0.82	0.04
% spKt/V >= 1.4	0%	0%	33%	50%	67%	100%	100%	33%	50%	100%	80%	67%
% spKt/V >= 1.2	0%	0%	100%	75%	67%	100%	100%	100%	100%	100%	100%	100%



	Mar	Apr	May	Jun	Jul	Aug	Sep	Oct	Nov	Dec	Jan	Feb
# spKt/V w/ 3tx/wk	0	0	3	4	3	2	3	3	4	3	5	3
# spKt/V >= 1.4 w/3tx/wk	0	0	1	2	2	2	3	1	2	3	4	2
Pop. Mean	0	0	1.40	1.31	1.28	1.55	1.46	1.36	1.34	1.54	1.78	1.40
Std. Deviation	0	0	0.21	0.20	0.43	0.01	0.03	0.10	0.13	0.03	0.82	0.04
% spKt/V >= 1.4 w/3tx/wk	0%	0%	33%	50%	67%	100%	100%	33%	50%	100%	80%	67%



	Mar	Apr	May	Jun	Jul	Aug	Sep	Oct	Nov	Dec	Jan	Feb
# Pre Sys BP	0	0	3	4	3	2	3	3	4	3	6	3
# Pre Sys BP <= 165	0	0	3	4	3	2	3	3	4	3	5	3
Pop. Mean	0	0	140	137	142	137	147	137	135	145	142	143
Std. Deviation	0	0	19.4	12.2	13.0	9.2	2.5	21.4	17.2	11.6	19.6	15.9
% Pre Sys BP <= 165	0%	0%	100%	100%	100%	100%	100%	100%	100%	100%	83%	100%

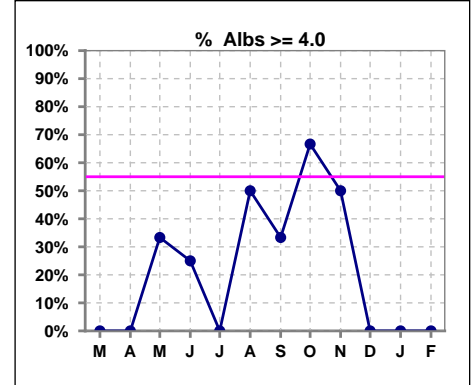


Methodology: a) All labs for 'Adequacy of Dialysis', 'Nutrition', 'Osteodystrophy', 'Anemia' and 'Diabetes' based on last value of month; b) BP's and #L processed are average of all values for month; c) Access data takes last access of month; d) Values for SGA and 'Infection Control' use most recent result.

\*Albumin values use BCG method - as of July 2001

**II. NUTRITION**

	Mar	Apr	May	Jun	Jul	Aug	Sep	Oct	Nov	Dec	Jan	Feb
# Albumin	0	0	3	4	3	2	3	3	4	3	6	3
# Albumin >= 4.0	0	0	1	1	0	1	1	2	2	0	0	0
Pop. Mean	0	0	3.7	3.3	3.8	3.9	3.8	3.8	3.8	3.5	3.4	3.7
Std. Deviation	0	0	0.44	0.56	0.06	0.14	0.40	0.35	0.26	0.31	0.50	0.40
% Alb >= 4.0	0%	0%	33%	25%	0%	50%	33%	67%	50%	0%	0%	0%

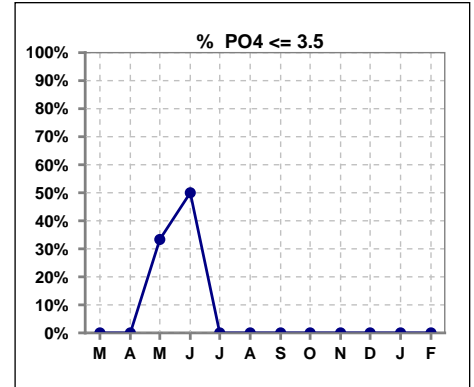


Methodology: a) All labs for 'Adequacy of Dialysis', 'Nutrition', 'Osteodystrophy', 'Anemia' and 'Diabetes' based on last value of month; b) BP's and #L processed are average of all values for month; c) Access data takes last access of month; d) Values for SGA and 'Infection Control' use most recent result.

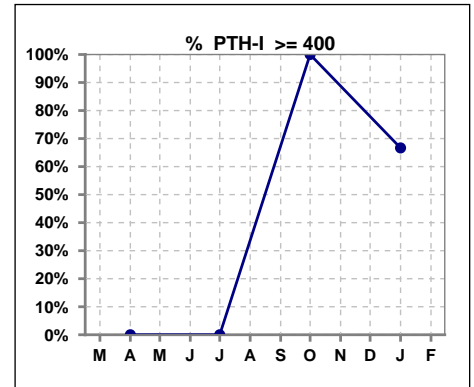
Lab methodology for PTH changed January 2012

**III. OSTEODYSTROPHY**

	Mar	Apr	May	Jun	Jul	Aug	Sep	Oct	Nov	Dec	Jan	Feb
# PO4	0	0	3	4	3	2	3	3	4	3	6	3
# PO4 <= 3.5	0	0	1	2	0	0	0	0	0	0	0	0
Pop. Mean	0	0	3.8	3.9	5.5	6.4	5.3	7.1	6.8	4.7	5.6	5.5
Std. Deviation	0	0	0.91	1.03	1.61	0.78	0.42	3.21	0.46	0.85	1.21	0.80
% PO4 <= 3.5	0%	0%	33%	50%	0%	0%	0%	0%	0%	0%	0%	0%



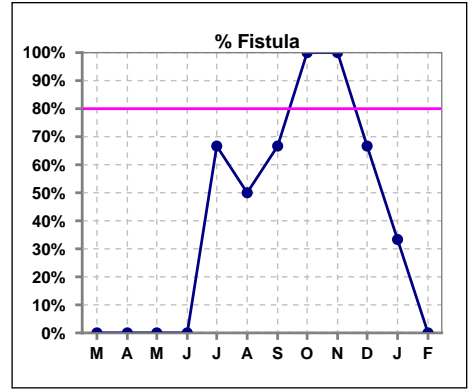
	Mar	Apr	May	Jun	Jul	Aug	Sep	Oct	Nov	Dec	Jan	Feb
# PTH-I		0			3			1			6	
# PTH-I >= 400		0			0			1			4	
Pop. Mean		0			235			472			695	
Std. Deviation		0			156			0			366	
% PTH-I >= 400		0%			0%			100%			67%	



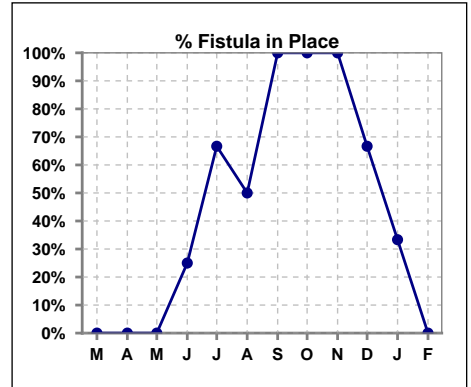
Methodology: a) All labs for 'Adequacy of Dialysis', 'Nutrition', 'Osteodystrophy', 'Anemia' and 'Diabetes' based on last value of month; b) BP's and #L processed are average of all values for month; c) Access data takes last access of month; d) Values for SGA and 'Infection Control' use most recent result.

**IV. ACCESS**

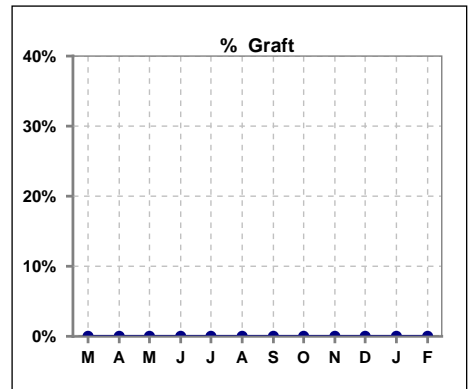
	Mar	Apr	May	Jun	Jul	Aug	Sep	Oct	Nov	Dec	Jan	Feb
# Access	0	0	3	4	3	2	3	3	4	3	6	3
# Fistula	0	0	0	0	2	1	2	3	4	2	2	0
<b>% Fistula</b>	0%	0%	0%	0%	67%	50%	67%	100%	100%	67%	33%	0%



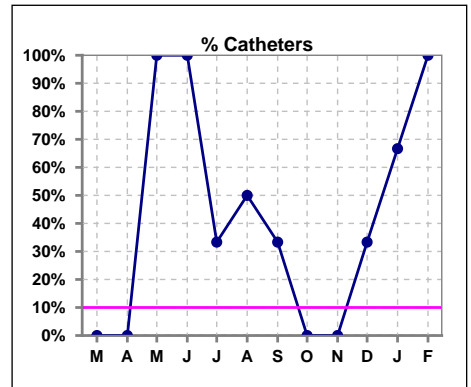
	Mar	Apr	May	Jun	Jul	Aug	Sep	Oct	Nov	Dec	Jan	Feb
# Patient	0	0	3	4	3	2	3	3	4	3	6	3
# Fistula in Place	0	0	0	1	2	1	3	3	4	2	2	0
<b>% Fistula in Place</b>	0%	0%	0%	25%	67%	50%	100%	100%	100%	67%	33%	0%



	Mar	Apr	May	Jun	Jul	Aug	Sep	Oct	Nov	Dec	Jan	Feb
# Access	0	0	3	4	3	2	3	3	4	3	6	3
# Graft	0	0	0	0	0	0	0	0	0	0	0	0
<b>% Graft</b>	0%	0%	0%	0%	0%	0%	0%	0%	0%	0%	0%	0%



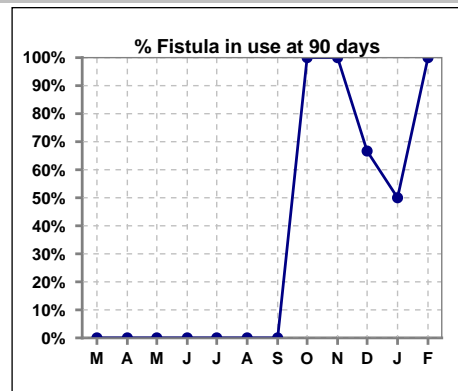
	Mar	Apr	May	Jun	Jul	Aug	Sep	Oct	Nov	Dec	Jan	Feb
# Access	0	0	3	4	3	2	3	3	4	3	6	3
# Catheters	0	0	3	4	1	1	1	0	0	1	4	3
<b>% Catheters</b>	0%	0%	100%	100%	33%	50%	33%	0%	0%	33%	67%	100%



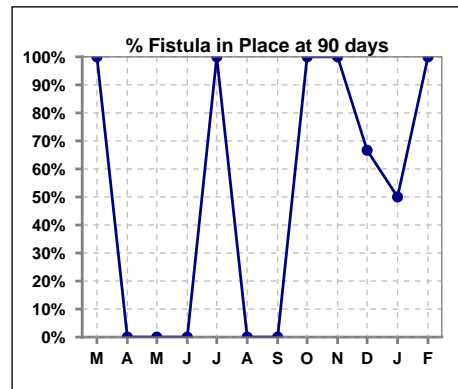
Methodology: a) All labs for 'Adequacy of Dialysis', 'Nutrition', 'Osteodystrophy', 'Anemia' and 'Diabetes' based on last value of month; b) BP's and #L processed are average of all values for month; c) Access data takes last access of month; d) Values for SGA and 'Infection Control' use most recent result.

**IV. ACCESS - CONT. Access at 90 days for those patients that reached 90 days within the month.**

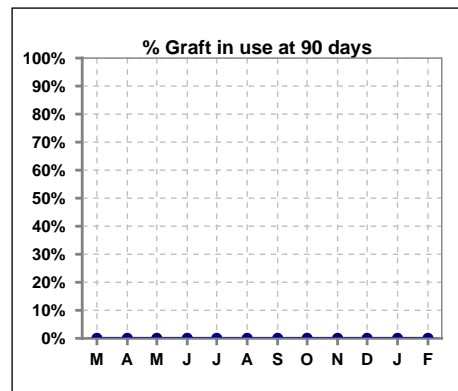
	Mar	Apr	May	Jun	Jul	Aug	Sep	Oct	Nov	Dec	Jan	Feb
# Patient	1	0	1	0	1	1	1	2	1	3	2	2
# Fistula in use	0	0	0	0	0	0	0	2	1	2	1	2
% Fistula in use	0%	0%	0%	0%	0%	0%	0%	100%	100%	67%	50%	100%



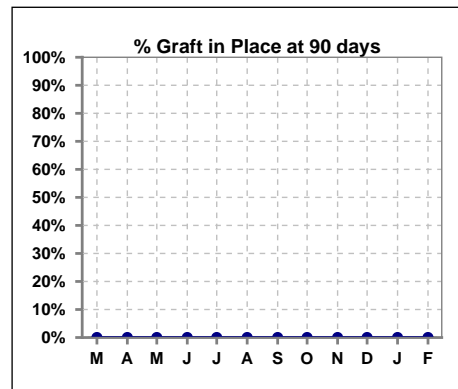
	Mar	Apr	May	Jun	Jul	Aug	Sep	Oct	Nov	Dec	Jan	Feb
# Patient	1	0	1	0	1	1	1	2	1	3	2	2
# Fistula in Place	1	0	0	0	1	0	0	2	1	2	1	2
% Fistula in Place	100%	0%	0%	0%	100%	0%	0%	100%	100%	67%	50%	100%



	Mar	Apr	May	Jun	Jul	Aug	Sep	Oct	Nov	Dec	Jan	Feb
# Patient	1	0	1	0	1	1	1	2	1	3	2	2
# Graft in use	0	0	0	0	0	0	0	0	0	0	0	0
% Graft in use	0%	0%	0%	0%	0%	0%	0%	0%	0%	0%	0%	0%



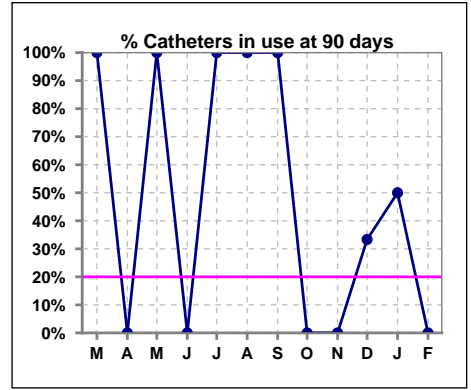
	Mar	Apr	May	Jun	Jul	Aug	Sep	Oct	Nov	Dec	Jan	Feb
# Patient	1	0	1	0	1	1	1	2	1	3	2	2
# Graft in Place	0	0	0	0	0	0	0	0	0	0	0	0
% Graft in Place	0%	0%	0%	0%	0%	0%	0%	0%	0%	0%	0%	0%



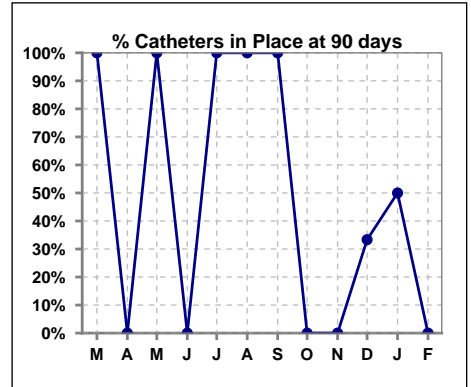
Methodology: a) All labs for 'Adequacy of Dialysis', 'Nutrition', 'Osteodystrophy', 'Anemia' and 'Diabetes' based on last value of month; b) BP's and #L processed are average of all values for month; c) Access data takes last access of month; d) Values for SGA and 'Infection Control' use most recent result.

**IV. ACCESS - CONT. Access at 90 days for those patients that reached 90 days within the month.**

	Mar	Apr	May	Jun	Jul	Aug	Sep	Oct	Nov	Dec	Jan	Feb
# Patient	1	0	1	0	1	1	1	2	1	3	2	2
# Catheters in use	1	0	1	0	1	1	1	0	0	1	1	0
% Catheters in use	100%	0%	100%	0%	100%	100%	100%	0%	0%	33%	50%	0%

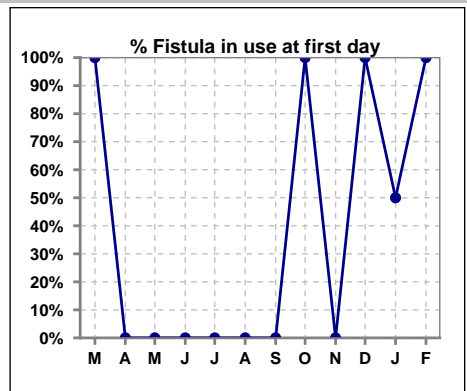


	Mar	Apr	May	Jun	Jul	Aug	Sep	Oct	Nov	Dec	Jan	Feb
# Patient	1	0	1	0	1	1	1	2	1	3	2	2
# Catheters in Place	1	0	1	0	1	1	1	0	0	1	1	0
% Catheters in Place	100%	0%	100%	0%	100%	100%	100%	0%	0%	33%	50%	0%

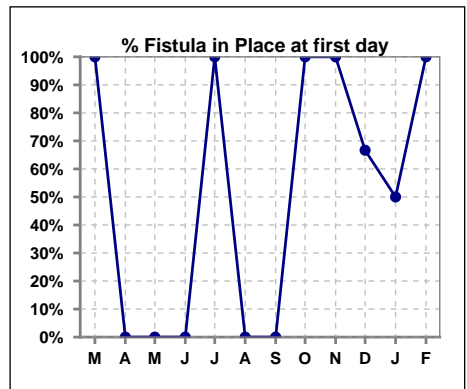


**IV. ACCESS - CONT. Access at first day for those patients that reached 90 days within the month.**

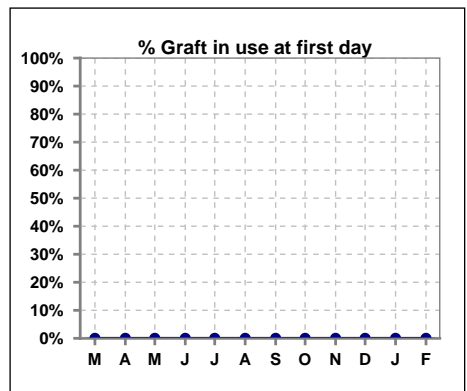
	Mar	Apr	May	Jun	Jul	Aug	Sep	Oct	Nov	Dec	Jan	Feb
# Patient	1	0	1	0	1	1	1	2	1	2	2	2
# Fistula in use	1	0	0	0	0	0	0	2	0	2	1	2
% Fistula in use	100%	0%	0%	0%	0%	0%	0%	100%	0%	100%	50%	100%



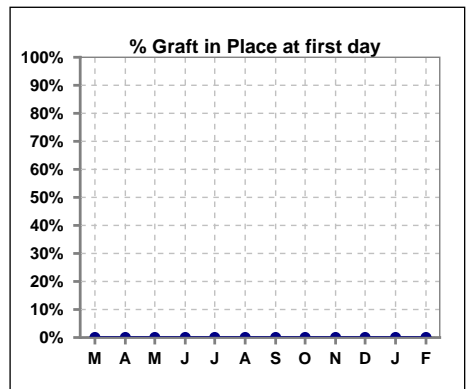
	Mar	Apr	May	Jun	Jul	Aug	Sep	Oct	Nov	Dec	Jan	Feb
# Patient	1	0	1	0	1	1	1	2	1	3	2	2
# Fistula in Place	1	0	0	0	1	0	0	2	1	2	1	2
% Fistula in Place	100%	0%	0%	0%	100%	0%	0%	100%	100%	67%	50%	100%



	Mar	Apr	May	Jun	Jul	Aug	Sep	Oct	Nov	Dec	Jan	Feb
# Patient	1	0	1	0	1	1	1	2	1	2	2	2
# Graft in use	0	0	0	0	0	0	0	0	0	0	0	0
% Graft in use	0%	0%	0%	0%	0%	0%	0%	0%	0%	0%	0%	0%



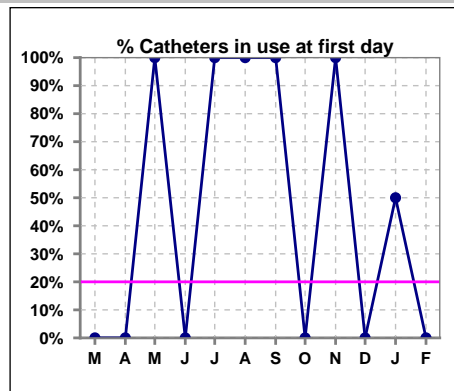
	Mar	Apr	May	Jun	Jul	Aug	Sep	Oct	Nov	Dec	Jan	Feb
# Patient	1	0	1	0	1	1	1	2	1	3	2	2
# Graft in Place	0	0	0	0	0	0	0	0	0	0	0	0
% Graft in Place	0%	0%	0%	0%	0%	0%	0%	0%	0%	0%	0%	0%



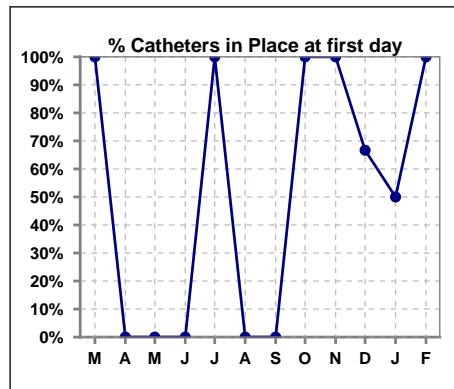
Methodology: a) All labs for 'Adequacy of Dialysis', 'Nutrition', 'Osteodystrophy', 'Anemia' and 'Diabetes' based on last value of month; b) BP's and #L processed are average of all values for month; c) Access data takes last access of month; d) Values for SGA and 'Infection Control' use most recent result.

**IV. ACCESS - CONT. Access at first day for those patients that reached 90 days within the month.**

	Mar	Apr	May	Jun	Jul	Aug	Sep	Oct	Nov	Dec	Jan	Feb
# Patient	1	0	1	0	1	1	1	2	1	2	2	2
# Catheters in use	0	0	1	0	1	1	1	0	1	0	1	0
% Catheters in use	0%	0%	100%	0%	100%	100%	100%	0%	100%	0%	50%	0%



	Mar	Apr	May	Jun	Jul	Aug	Sep	Oct	Nov	Dec	Jan	Feb
# Patient	1	0	1	0	1	1	1	2	1	3	2	2
# Catheters in Place	1	0	0	0	1	0	0	2	1	2	1	2
% Catheters in Place	100%	0%	0%	0%	100%	0%	0%	100%	100%	67%	50%	100%



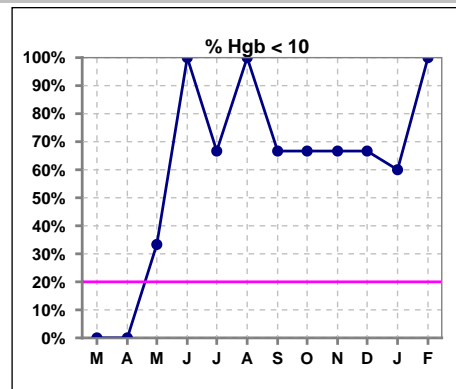
Methodology: a) All labs for 'Adequacy of Dialysis', 'Nutrition', 'Osteodystrophy', 'Anemia' and 'Diabetes' based on last value of month; b) BP's and #L processed are average of all values for month; c) Access data takes last access of month; d) Values for SGA and 'Infection Control' use most recent result.



**V. ANEMIA**

	Mar	Apr	May	Jun	Jul	Aug	Sep	Oct	Nov	Dec	Jan	Feb
# Hgb	0	0	3	4	3	1	3	3	3	3	5	2
# Hgb <= 10	0	0	1	4	2	1	2	2	2	2	3	2
Pop. Mean	0	0	9.3	8.6	8.8	9.1	9.6	9.8	10.3	9.1	9.5	8.9
Std. Deviation	0	0	1.6	0.9	1.3	0	1.1	1.1	0.9	0.9	1.5	0.6
<b>% Hgb &lt;= 10</b>	0%	0%	33%	100%	67%	100%	67%	67%	67%	67%	60%	100%

Note: Excludes patients who received no ESA in month.



	Mar	Apr	May	Jun	Jul	Aug	Sep	Oct	Nov	Dec	Jan	Feb
# Hgb	0	0	3	4	3	1	3	3	3	3	5	2
# Hgb >= 12	0	0	0	0	0	0	0	0	0	0	0	0
Pop. Mean	0	0	9.3	8.6	8.8	9.1	9.6	9.8	10.3	9.1	9.5	8.9
Std. Deviation	0	0	1.6	0.9	1.3	0	1.1	1.1	0.9	0.9	1.5	0.6
<b>% Hgb &gt;= 12</b>	0%	0%	0%	0%	0%	0%	0%	0%	0%	0%	0%	0%

Note: Excludes patients who received no ESA in month.

