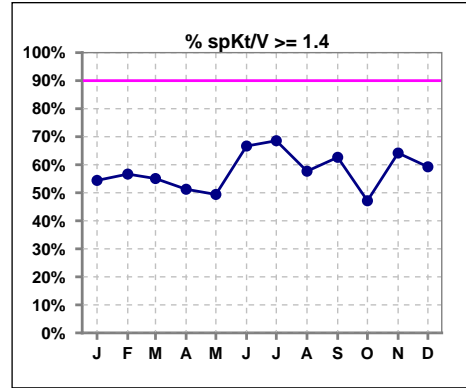
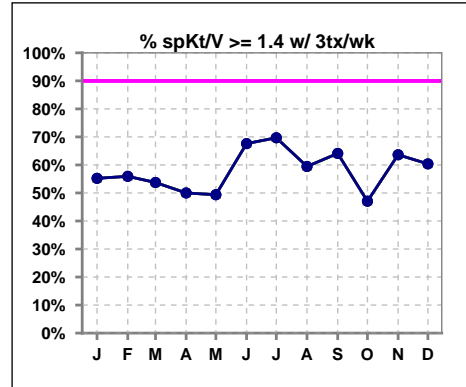


I. ADEQUACY OF DIALYSIS

	Jan	Feb	Mar	Apr	May	Jun	Jul	Aug	Sep	Oct	Nov	Dec
# spKt/V	68	60	69	80	83	75	70	78	83	70	67	54
# spKt/V >= 1.4	37	34	38	41	41	50	48	45	52	33	43	32
Pop. Mean	1.45	1.44	1.48	1.36	1.47	1.53	1.56	1.45	1.47	1.43	1.50	1.51
Std. Deviation	0.28	0.33	0.34	0.34	0.40	0.41	0.36	0.37	0.34	0.31	0.31	0.32
% spKt/V >= 1.4	54%	57%	55%	51%	49%	67%	69%	58%	63%	47%	64%	59%
% spKt/V >= 1.2	82%	80%	87%	74%	81%	85%	91%	81%	82%	86%	87%	89%

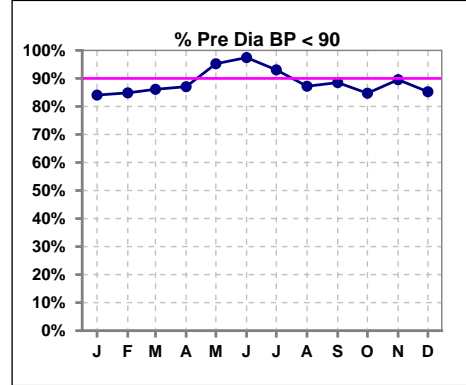


	Jan	Feb	Mar	Apr	May	Jun	Jul	Aug	Sep	Oct	Nov	Dec
# spKt/V w/ 3tx/wk	67	59	67	78	79	71	66	74	78	68	66	53
# spKt/V >= 1.4 w/3tx/wk	37	33	36	39	39	48	46	44	50	32	42	32
Pop. Mean	1.46	1.43	1.47	1.36	1.46	1.54	1.56	1.46	1.49	1.43	1.50	1.51
Std. Deviation	0.28	0.32	0.34	0.35	0.40	0.41	0.37	0.37	0.34	0.31	0.32	0.33
% spKt/V >= 1.4 w/3tx/wk	55%	56%	54%	50%	49%	68%	70%	59%	64%	47%	64%	60%

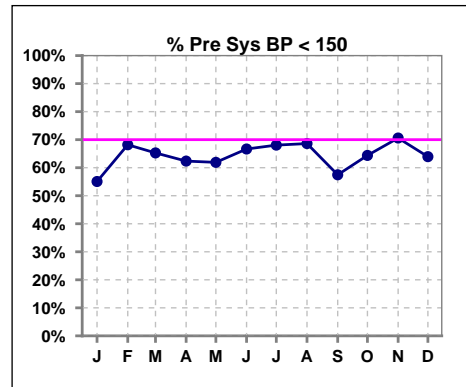


Blood Pressure Control (Pre)

	Jan	Feb	Mar	Apr	May	Jun	Jul	Aug	Sep	Oct	Nov	Dec
# Pre Dia BP	69	66	72	85	84	78	72	86	87	72	67	61
# Pre Dia BP < 90	58	56	62	74	80	76	67	75	77	61	60	52
Pop. Mean	78	75	77	77	75	72	72	75	76	76	75	76
Std. Deviation	13.6	12.5	12.5	12.1	10.8	11.3	12.3	11.6	12.5	11.6	11.1	13.6
% Pre Dia BP < 90	84%	85%	86%	87%	95%	97%	93%	87%	89%	85%	90%	85%



	Jan	Feb	Mar	Apr	May	Jun	Jul	Aug	Sep	Oct	Nov	Dec
# Pre Sys BP	69	66	72	85	84	78	72	86	87	73	68	61
# Pre Sys BP < 150	38	45	47	53	52	52	49	59	50	47	48	39
Pop. Mean	146	141	141	143	141	140	140	143	144	143	142	142
Std. Deviation	22.8	19.7	19.1	20.0	21.0	19.6	19.4	19.5	21.3	23.7	18.2	21.3
% Pre Sys BP < 150	55%	68%	65%	62%	62%	67%	68%	69%	57%	64%	71%	64%

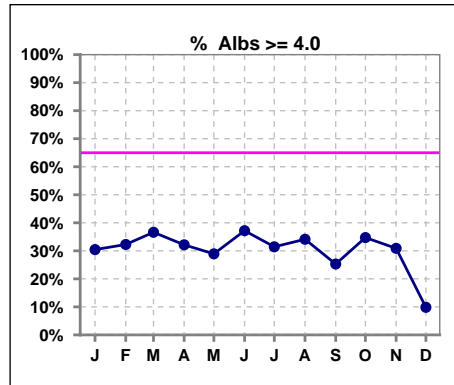


Methodology: a) All labs for 'Adequacy of Dialysis', 'Nutrition', 'Osteodystrophy', 'Anemia' and 'Diabetes' based on last value of month; b) BP's and #L processed are average of all values for month; c) Access data takes last access of month; d) Values for SGA and 'Infection Control' use most recent result.

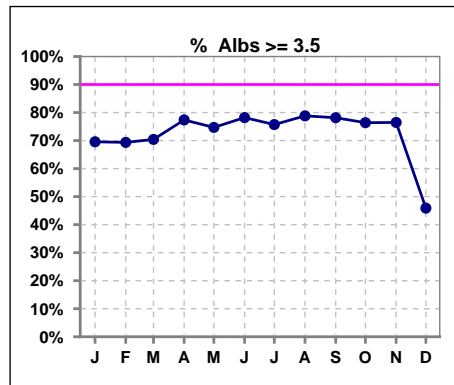
*Albumin values use BCG method - as of July 2001

II. NUTRITION

	Jan	Feb	Mar	Apr	May	Jun	Jul	Aug	Sep	Oct	Nov	Dec
# Albumin	69	62	71	84	83	78	70	85	87	72	68	61
# Albumin >= 4.0	21	20	26	27	24	29	22	29	22	25	21	6
Pop. Mean	3.7	3.6	3.7	3.7	3.7	3.8	3.7	3.7	3.7	3.7	3.7	3.4
Std. Deviation	0.47	0.49	0.58	0.48	0.43	0.39	0.38	0.39	0.40	0.41	0.39	0.51
% Alb >= 4.0	30%	32%	37%	32%	29%	37%	31%	34%	25%	35%	31%	10%



	Jan	Feb	Mar	Apr	May	Jun	Jul	Aug	Sep	Oct	Nov	Dec
# Albumin	69	62	71	84	83	78	70	85	87	72	68	61
# Albumin >= 3.5	48	43	50	65	62	61	53	67	68	55	52	28
Pop. Mean	3.7	3.6	3.7	3.7	3.7	3.8	3.7	3.7	3.7	3.7	3.7	3.4
Std. Deviation	0.47	0.49	0.58	0.48	0.43	0.39	0.38	0.39	0.40	0.41	0.39	0.51
% Alb >= 3.5	70%	69%	70%	77%	75%	78%	76%	79%	78%	76%	76%	46%

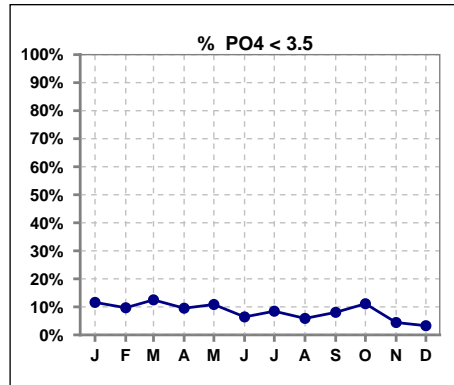


Methodology: a) All labs for 'Adequacy of Dialysis', 'Nutrition', 'Osteodystrophy', 'Anemia' and 'Diabetes' based on last value of month; b) BP's and #L processed are average of all values for month; c) Access data takes last access of month; d) Values for SGA and 'Infection Control' use most recent result.

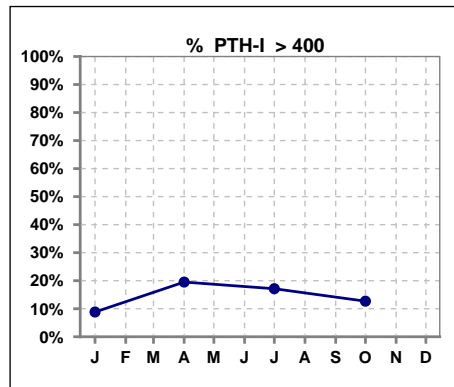
Lab methodology for PTH changed January 2012

III. OSTEODYSTROPHY

	Jan	Feb	Mar	Apr	May	Jun	Jul	Aug	Sep	Oct	Nov	Dec
# PO4	69	62	72	84	83	78	71	85	87	72	68	61
# PO4 < 3.5	8	6	9	8	9	5	6	5	7	8	3	2
Pop. Mean	5.3	5.5	5.0	5.4	5.4	5.6	5.5	5.8	5.4	5.6	5.7	6.0
Std. Deviation	1.68	2.12	1.31	1.82	1.72	1.97	1.62	1.83	1.81	1.81	1.58	1.64
% PO4 < 3.5	12%	10%	13%	10%	11%	6%	8%	6%	8%	11%	4%	3%



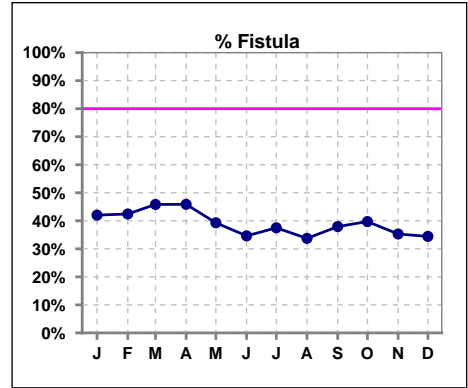
	Jan	Feb	Mar	Apr	May	Jun	Jul	Aug	Sep	Oct	Nov	Dec
# PTH-I	68			82			70			63		
# PTH-I > 400	6			16			12			8		
Pop. Mean	188			273			298			263		
Std. Deviation	177			202			422			264		
% PTH-I > 400	9%			20%			17%			13%		



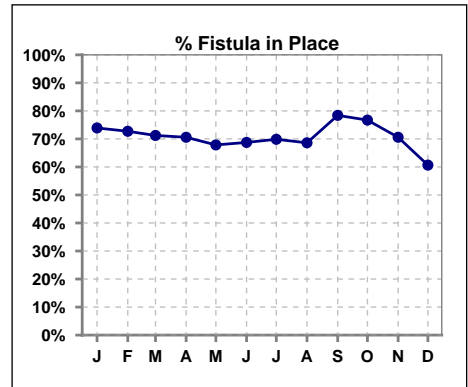
Methodology: a) All labs for 'Adequacy of Dialysis', 'Nutrition', 'Osteodystrophy', 'Anemia' and 'Diabetes' based on last value of month; b) BP's and #L processed are average of all values for month; c) Access data takes last access of month; d) Values for SGA and 'Infection Control' use most recent result.

IV. ACCESS

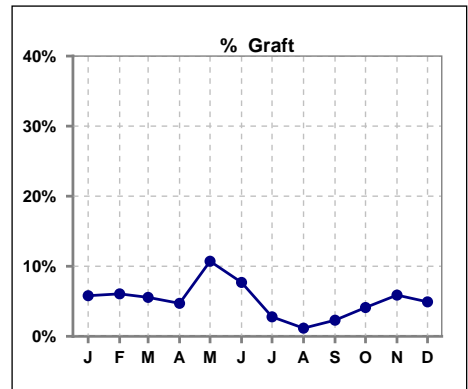
	Jan	Feb	Mar	Apr	May	Jun	Jul	Aug	Sep	Oct	Nov	Dec
# Access	69	66	72	85	84	78	72	86	87	73	68	61
# Fistula	29	28	33	39	33	27	27	29	33	29	24	21
% Fistula	42%	42%	46%	46%	39%	35%	38%	34%	38%	40%	35%	34%



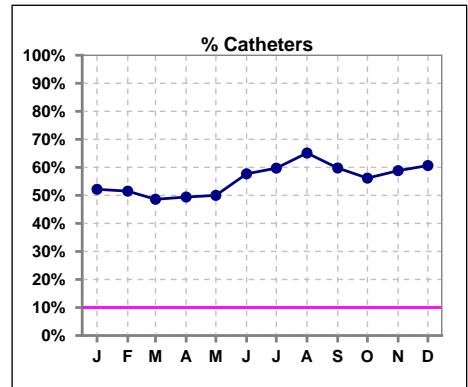
	Jan	Feb	Mar	Apr	May	Jun	Jul	Aug	Sep	Oct	Nov	Dec
# Patient	69	66	73	85	84	80	73	86	88	73	68	61
# Fistula in Place	51	48	52	60	57	55	51	59	69	56	48	37
% Fistula in Place	74%	73%	71%	71%	68%	69%	70%	69%	78%	77%	71%	61%



	Jan	Feb	Mar	Apr	May	Jun	Jul	Aug	Sep	Oct	Nov	Dec
# Access	69	66	72	85	84	78	72	86	87	73	68	61
# Graft	4	4	4	4	9	6	2	1	2	3	4	3
% Graft	6%	6%	6%	5%	11%	8%	3%	1%	2%	4%	6%	5%



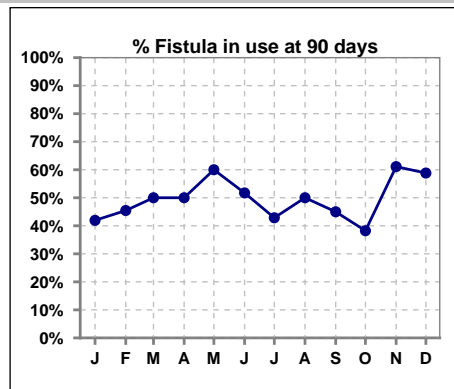
	Jan	Feb	Mar	Apr	May	Jun	Jul	Aug	Sep	Oct	Nov	Dec
# Access	69	66	72	85	84	78	72	86	87	73	68	61
# Catheters	36	34	35	42	42	45	43	56	52	41	40	37
% Catheters	52%	52%	49%	49%	50%	58%	60%	65%	60%	56%	59%	61%



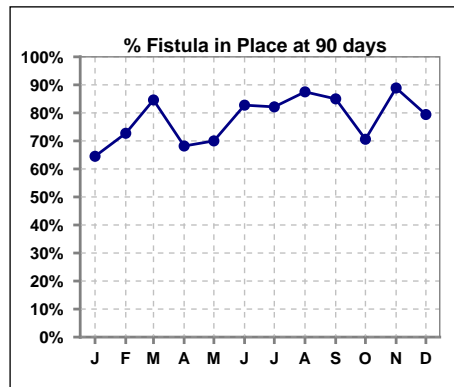
Methodology: a) All labs for 'Adequacy of Dialysis', 'Nutrition', 'Osteodystrophy', 'Anemia' and 'Diabetes' based on last value of month; b) BP's and #L processed are average of all values for month; c) Access data takes last access of month; d) Values for SGA and 'Infection Control' use most recent result.

IV. ACCESS - CONT. Access at 90 days for those patients that reached 90 days within the month.

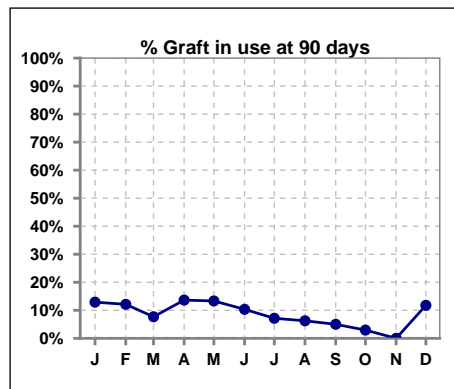
	Jan	Feb	Mar	Apr	May	Jun	Jul	Aug	Sep	Oct	Nov	Dec
# Patient	31	33	26	22	30	29	28	32	20	34	36	34
# Fistula in use	13	15	13	11	18	15	12	16	9	13	22	20
% Fistula in use	42%	45%	50%	50%	60%	52%	43%	50%	45%	38%	61%	59%



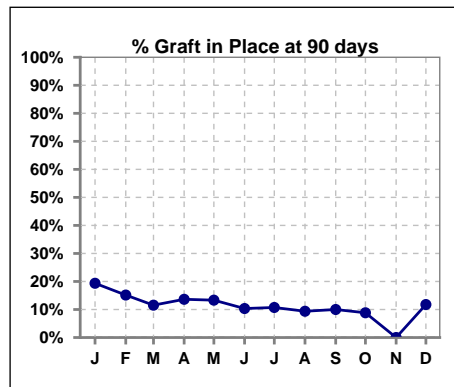
	Jan	Feb	Mar	Apr	May	Jun	Jul	Aug	Sep	Oct	Nov	Dec
# Patient	31	33	26	22	30	29	28	32	20	34	36	34
# Fistula in Place	20	24	22	15	21	24	23	28	17	24	32	27
% Fistula in Place	65%	73%	85%	68%	70%	83%	82%	88%	85%	71%	89%	79%



	Jan	Feb	Mar	Apr	May	Jun	Jul	Aug	Sep	Oct	Nov	Dec
# Patient	31	33	26	22	30	29	28	32	20	34	36	34
# Graft in use	4	4	2	3	4	3	2	2	1	1	0	4
% Graft in use	13%	12%	8%	14%	13%	10%	7%	6%	5%	3%	0%	12%



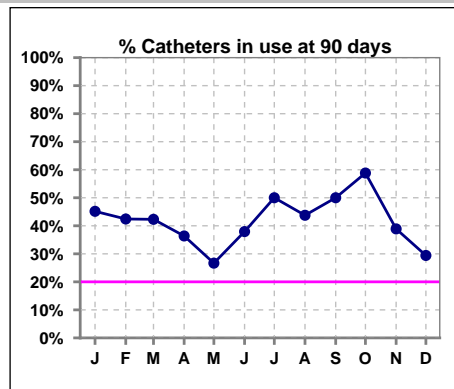
	Jan	Feb	Mar	Apr	May	Jun	Jul	Aug	Sep	Oct	Nov	Dec
# Patient	31	33	26	22	30	29	28	32	20	34	36	34
# Graft in Place	6	5	3	3	4	3	3	3	2	3	0	4
% Graft in Place	19%	15%	12%	14%	13%	10%	11%	9%	10%	9%	0%	12%



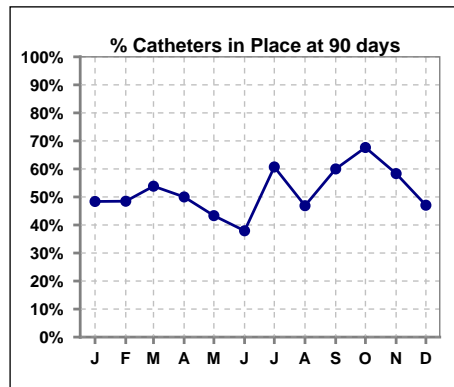
Methodology: a) All labs for 'Adequacy of Dialysis', 'Nutrition', 'Osteodystrophy', 'Anemia' and 'Diabetes' based on last value of month; b) BP's and #L processed are average of all values for month; c) Access data takes last access of month; d) Values for SGA and 'Infection Control' use most recent result.

IV. ACCESS - CONT. Access at 90 days for those patients that reached 90 days within the month. - CONT.

	Jan	Feb	Mar	Apr	May	Jun	Jul	Aug	Sep	Oct	Nov	Dec
# Patient	31	33	26	22	30	29	28	32	20	34	36	34
# Catheters in use	14	14	11	8	8	11	14	14	10	20	14	10
% Catheters in use	45%	42%	42%	36%	27%	38%	50%	44%	50%	59%	39%	29%

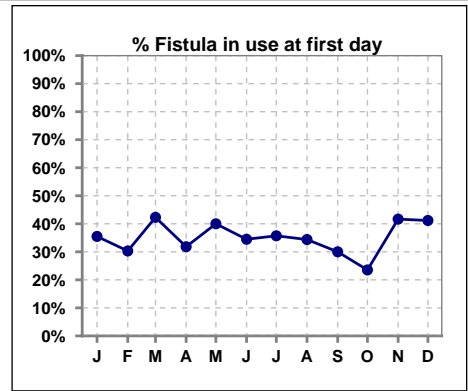


	Jan	Feb	Mar	Apr	May	Jun	Jul	Aug	Sep	Oct	Nov	Dec
# Patient	31	33	26	22	30	29	28	32	20	34	36	34
# Catheters in Place	15	16	14	11	13	11	17	15	12	23	21	16
% Catheters in Place	48%	48%	54%	50%	43%	38%	61%	47%	60%	68%	58%	47%

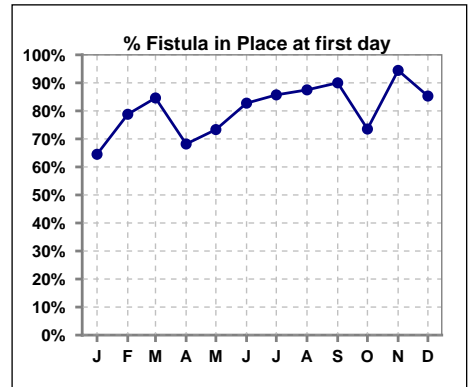


IV. ACCESS - CONT. Access at first day for those patients that reached 90 days within the month.

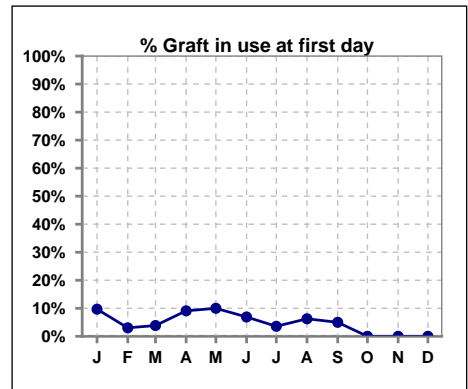
	Jan	Feb	Mar	Apr	May	Jun	Jul	Aug	Sep	Oct	Nov	Dec
# Patient	31	33	26	22	30	29	28	32	20	34	36	34
# Fistula in use	11	10	11	7	12	10	10	11	6	8	15	14
% Fistula in use	35%	30%	42%	32%	40%	34%	36%	34%	30%	24%	42%	41%



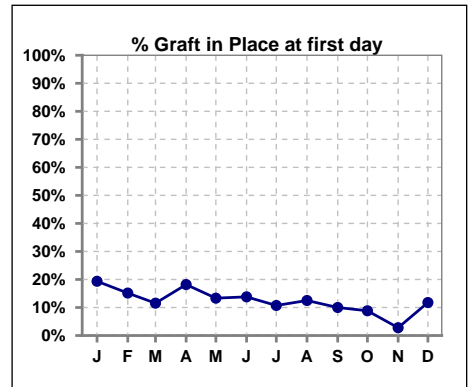
	Jan	Feb	Mar	Apr	May	Jun	Jul	Aug	Sep	Oct	Nov	Dec
# Patient	31	33	26	22	30	29	28	32	20	34	36	34
# Fistula in Place	20	26	22	15	22	24	24	28	18	25	34	29
% Fistula in Place	65%	79%	85%	68%	73%	83%	86%	88%	90%	74%	94%	85%



	Jan	Feb	Mar	Apr	May	Jun	Jul	Aug	Sep	Oct	Nov	Dec
# Patient	31	33	26	22	30	29	28	32	20	34	36	34
# Graft in use	3	1	1	2	3	2	1	2	1	0	0	0
% Graft in use	10%	3%	4%	9%	10%	7%	4%	6%	5%	0%	0%	0%



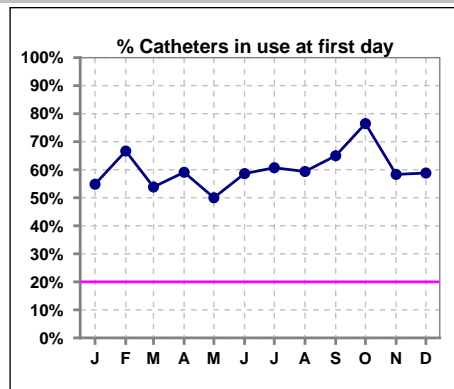
	Jan	Feb	Mar	Apr	May	Jun	Jul	Aug	Sep	Oct	Nov	Dec
# Patient	31	33	26	22	30	29	28	32	20	34	36	34
# Graft in Place	6	5	3	4	4	4	3	4	2	3	1	4
% Graft in Place	19%	15%	12%	18%	13%	14%	11%	13%	10%	9%	3%	12%



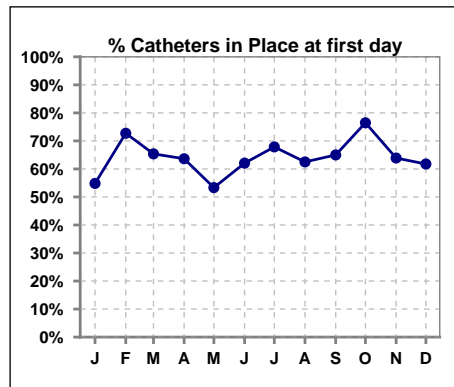
Methodology: a) All labs for 'Adequacy of Dialysis', 'Nutrition', 'Osteodystrophy', 'Anemia' and 'Diabetes' based on last value of month; b) BP's and #L processed are average of all values for month; c) Access data takes last access of month; d) Values for SGA and 'Infection Control' use most recent result.

IV. ACCESS - CONT. Access at first day for those patients that reached 90 days within the month. - CONT.

	Jan	Feb	Mar	Apr	May	Jun	Jul	Aug	Sep	Oct	Nov	Dec
# Patient	31	33	26	22	30	29	28	32	20	34	36	34
# Catheters in use	17	22	14	13	15	17	17	19	13	26	21	20
% Catheters in use	55%	67%	54%	59%	50%	59%	61%	59%	65%	76%	58%	59%



	Jan	Feb	Mar	Apr	May	Jun	Jul	Aug	Sep	Oct	Nov	Dec
# Patient	31	33	26	22	30	29	28	32	20	34	36	34
# Catheters in Place	17	24	17	14	16	18	19	20	13	26	23	21
% Catheters in Place	55%	73%	65%	64%	53%	62%	68%	63%	65%	76%	64%	62%

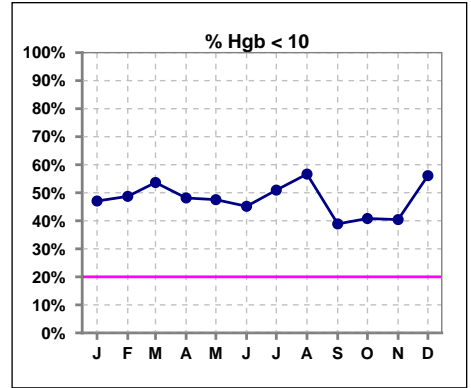


Methodology: a) All labs for 'Adequacy of Dialysis', 'Nutrition', 'Osteodystrophy', 'Anemia' and 'Diabetes' based on last value of month; b) BP's and #L processed are average of all values for month; c) Access data takes last access of month; d) Values for SGA and 'Infection Control' use most recent result.

V. ANEMIA

	Jan	Feb	Mar	Apr	May	Jun	Jul	Aug	Sep	Oct	Nov	Dec
# Hgb	51	39	41	54	61	62	53	60	54	49	47	41
# Hgb < 10	24	19	22	26	29	28	27	34	21	20	19	23
Pop. Mean	10.1	10.0	9.8	9.9	10.0	10.0	10.0	9.8	10.0	10.0	10.1	9.7
Std. Deviation	1.5	1.4	1.5	1.4	1.3	1.5	1.5	1.3	1.4	1.2	1.4	1.4
% Hgb < 10	47%	49%	54%	48%	48%	45%	51%	57%	39%	41%	40%	56%

Note: Excludes patients who received no ESA in month.



	Jan	Feb	Mar	Apr	May	Jun	Jul	Aug	Sep	Oct	Nov	Dec
# Hgb	51	39	41	54	61	62	53	60	54	49	47	41
# Hgb > 12	5	3	4	5	0	3	4	2	3	0	1	2
Pop. Mean	10.1	10.0	9.8	9.9	10.0	10.0	10.0	9.8	10.0	10.0	10.1	9.7
Std. Deviation	1.5	1.4	1.5	1.4	1.3	1.5	1.5	1.3	1.4	1.2	1.4	1.4
% Hgb > 12	10%	8%	10%	9%	0%	5%	8%	3%	6%	0%	2%	5%

Note: Excludes patients who received no ESA in month.

