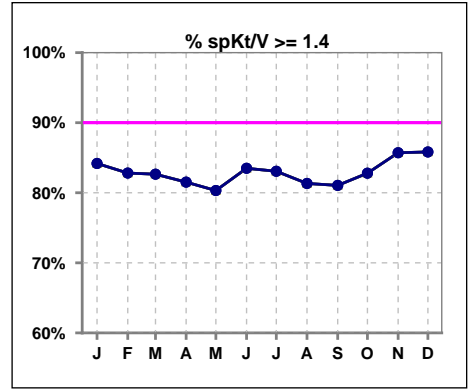
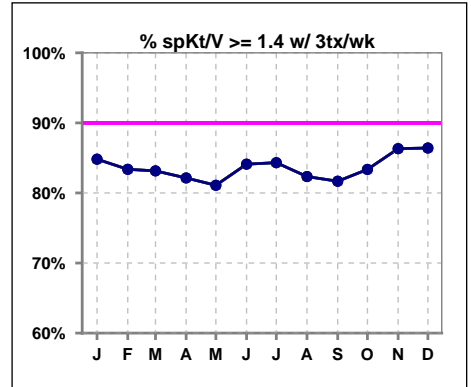


I. ADEQUACY OF DIALYSIS

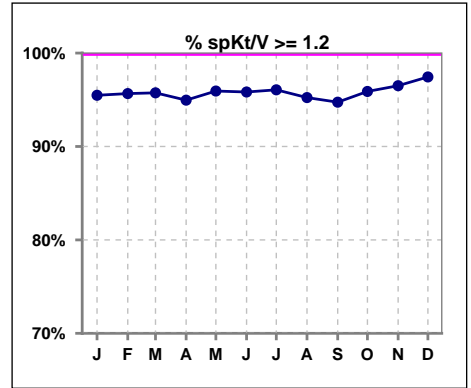
	Jan	Feb	Mar	Apr	May	Jun	Jul	Aug	Sep	Oct	Nov	Dec
# spKt/V	1239	1245	1245	1250	1255	1248	1246	1280	1293	1290	1288	1291
# spKt/V >= 1.4	1043	1031	1029	1019	1008	1042	1035	1041	1048	1068	1104	1108
Pop. Mean	1.67	1.66	1.66	1.64	1.64	1.65	1.65	1.63	1.63	1.66	1.69	1.69
Std. Deviation	0.30	0.31	0.31	0.30	0.31	0.31	0.31	0.31	0.31	0.31	0.31	0.30
% spKt/V >= 1.4	84%	83%	83%	82%	80%	83%	83%	81%	81%	83%	86%	86%



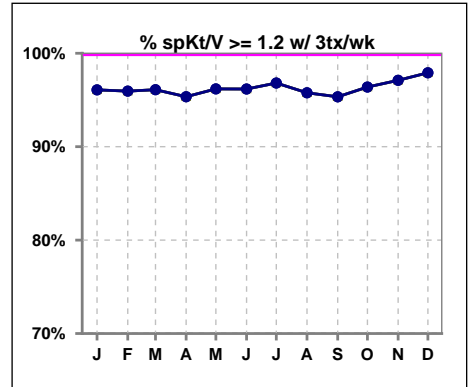
	Jan	Feb	Mar	Apr	May	Jun	Jul	Aug	Sep	Oct	Nov	Dec
# spKt/V w/ 3tx/wk	1199	1209	1205	1204	1206	1202	1193	1229	1244	1244	1243	1244
# spKt/V >= 1.4 w/3tx/wk	1017	1008	1002	989	978	1011	1006	1012	1016	1037	1073	1075
Pop. Mean	1.67	1.66	1.67	1.64	1.65	1.65	1.66	1.64	1.63	1.66	1.69	1.69
Std. Deviation	0.30	0.30	0.31	0.30	0.31	0.30	0.30	0.30	0.30	0.31	0.31	0.30
% >= 1.4 w/3tx/wk	85%	83%	83%	82%	81%	84%	84%	82%	82%	83%	86%	86%



	Jan	Feb	Mar	Apr	May	Jun	Jul	Aug	Sep	Oct	Nov	Dec
# spKt/V	1239	1245	1245	1250	1255	1248	1246	1280	1293	1290	1288	1291
# spKt/V >= 1.2	1183	1191	1192	1187	1204	1196	1197	1219	1225	1237	1243	1258
Pop. Mean	1.67	1.66	1.66	1.64	1.64	1.65	1.65	1.63	1.63	1.66	1.69	1.69
Std. Deviation	0.30	0.31	0.31	0.30	0.31	0.31	0.31	0.31	0.31	0.31	0.31	0.30
% spKt/V >= 1.2	95%	96%	96%	95%	96%	96%	96%	95%	95%	96%	97%	97%



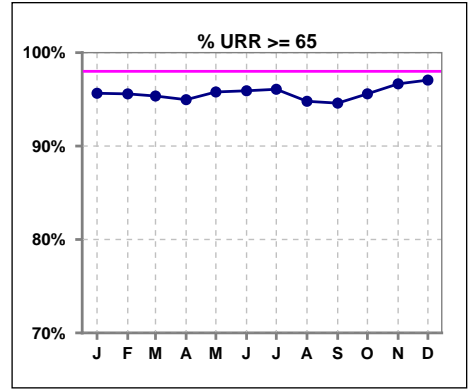
	Jan	Feb	Mar	Apr	May	Jun	Jul	Aug	Sep	Oct	Nov	Dec
# spKt/V w/ 3tx/wk	1199	1209	1205	1204	1206	1202	1193	1229	1244	1244	1243	1244
# spKt/V >= 1.2 w/3tx/wk	1152	1160	1158	1148	1160	1156	1155	1177	1186	1199	1207	1218
Pop. Mean	1.67	1.66	1.67	1.64	1.65	1.65	1.66	1.64	1.63	1.66	1.69	1.69
Std. Deviation	0.30	0.30	0.31	0.30	0.31	0.30	0.30	0.30	0.30	0.31	0.31	0.30
% >= 1.2 w/3tx/wk	96%	96%	96%	95%	96%	96%	97%	96%	95%	96%	97%	98%



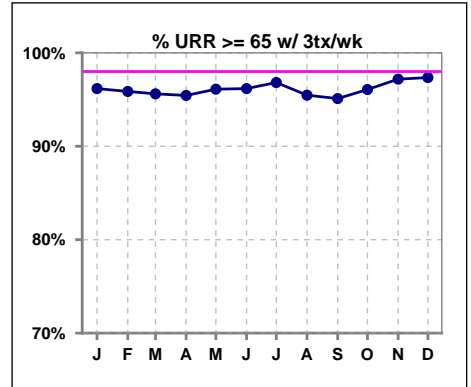
Methodology: a) All labs for 'Adequacy of Dialysis', 'Nutrition', 'Osteodystrophy', 'Anemia' and 'Diabetes' based on last value of month; b) BP's and #L processed are average of all values for month; c) Access data takes last access of month; d) Values for SGA and 'Infection Control' use most recent result.

I. ADEQUACY OF DIALYSIS - CONT.

	Jan	Feb	Mar	Apr	May	Jun	Jul	Aug	Sep	Oct	Nov	Dec
# URR	1242	1246	1249	1251	1259	1249	1249	1287	1295	1293	1288	1293
# URR >= 65	1188	1191	1191	1188	1206	1198	1200	1220	1225	1236	1245	1255
Pop. Mean	76	76	76	75	75	76	76	75	75	76	76	76
Std. Deviation	6.13	6.47	6.26	6.61	6.73	6.44	6.45	6.91	6.64	6.64	6.23	5.88
% URR >= 65	96%	96%	95%	95%	96%	96%	96%	95%	95%	96%	97%	97%



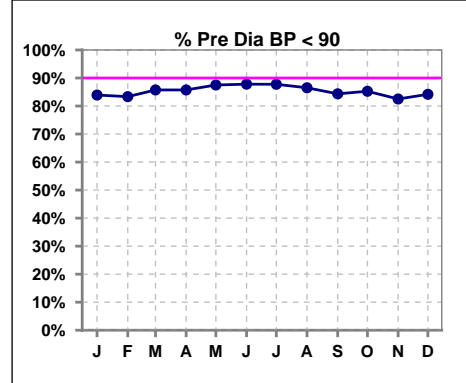
	Jan	Feb	Mar	Apr	May	Jun	Jul	Aug	Sep	Oct	Nov	Dec
# URR w/ 3tx/wk	1202	1210	1208	1205	1209	1202	1196	1235	1246	1247	1243	1246
# URR>=65 w/ 3tx/wk	1156	1160	1155	1150	1162	1156	1158	1179	1185	1198	1208	1213
Pop. Mean	76	76	76	75	76	76	76	75	75	76	76	76
Std. Deviation	6.02	6.41	6.14	6.42	6.62	6.26	6.24	6.73	6.52	6.55	6.11	5.80
% URR>=65 w/ 3tx/wk	96%	96%	96%	95%	96%	96%	97%	95%	95%	96%	97%	97%



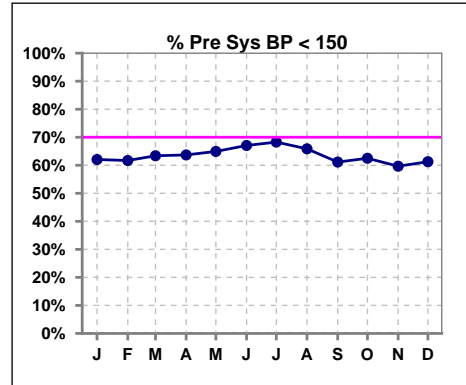
I. ADEQUACY OF DIALYSIS - CONT.

Blood Pressure Control (Pre)

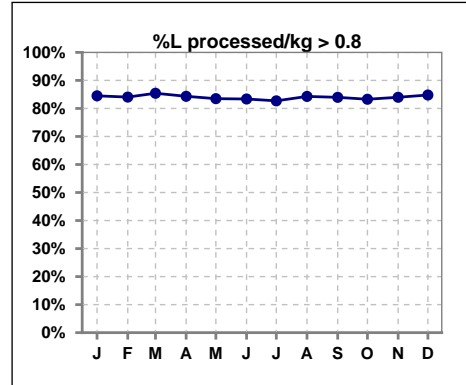
	Jan	Feb	Mar	Apr	May	Jun	Jul	Aug	Sep	Oct	Nov	Dec
# Pre Dia BP	1250	1261	1262	1262	1272	1262	1266	1297	1310	1303	1298	1308
# Pre Dia BP < 90	1049	1051	1082	1082	1113	1108	1111	1122	1105	1111	1071	1101
Pop. Mean	77	77	76	76	76	75	75	76	76	76	78	77
Std. Deviation	13.4	13.0	12.6	12.7	12.6	12.5	12.9	13.0	13.1	13.0	12.7	12.8
% Pre Dia BP < 90	84%	83%	86%	86%	88%	88%	88%	87%	84%	85%	83%	84%



	Jan	Feb	Mar	Apr	May	Jun	Jul	Aug	Sep	Oct	Nov	Dec
# Pre Sys BP	1252	1261	1262	1264	1272	1263	1267	1298	1310	1304	1299	1309
# Pre Sys BP < 150	777	778	800	805	826	847	865	855	801	815	775	802
Pop. Mean	144	144	143	143	142	141	141	142	144	144	145	144
Std. Deviation	21.3	21.2	20.8	21.0	20.6	20.4	20.7	21.1	20.9	21.7	20.3	20.6
%Pre Sys BP <150	62%	62%	63%	64%	65%	67%	68%	66%	61%	63%	60%	61%



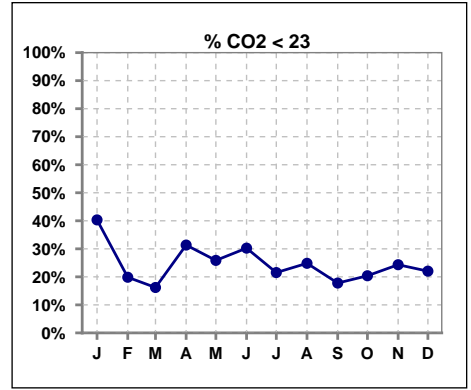
	Jan	Feb	Mar	Apr	May	Jun	Jul	Aug	Sep	Oct	Nov	Dec
# L processed/kg	1252	1261	1262	1264	1272	1263	1267	1299	1310	1304	1299	1309
# L processed/kg>0.8	1058	1060	1078	1066	1062	1053	1048	1095	1100	1086	1091	1110
Pop. Mean	1	1	1	1	1	1	1	1	1	1	1	1
Std. Deviation	0.3	0.3	0.3	0.3	0.3	0.3	0.3	0.3	0.3	0.3	0.3	0.3
% L processed/kg>0.8	85%	84%	85%	84%	83%	83%	83%	84%	84%	83%	84%	85%



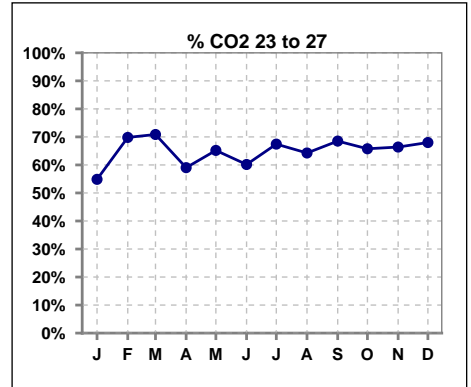
Methodology: a) All labs for 'Adequacy of Dialysis', 'Nutrition', 'Osteodystrophy', 'Anemia' and 'Diabetes' based on last value of month; b) BP's and #L processed are average of all values for month; c) Access data takes last access of month; d) Values for SGA and 'Infection Control' use most recent result.

I. ADEQUACY OF DIALYSIS - CONT.

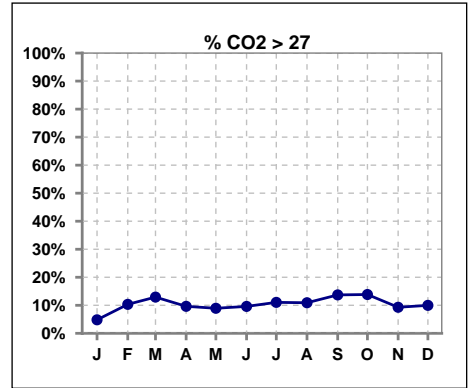
	Jan	Feb	Mar	Apr	May	Jun	Jul	Aug	Sep	Oct	Nov	Dec
# CO2	1245	1249	1253	1257	1264	1260	1259	1293	1299	1300	1291	1303
# CO2 < 23	502	248	203	394	327	381	271	321	231	265	314	287
Pop. Mean	23	24	25	24	24	24	24	24	25	25	24	24
Std. Deviation	2.72	2.65	2.67	2.96	2.78	2.78	2.69	2.74	2.80	2.74	2.76	2.67
% CO2 < 23	40%	20%	16%	31%	26%	30%	22%	25%	18%	20%	24%	22%



	Jan	Feb	Mar	Apr	May	Jun	Jul	Aug	Sep	Oct	Nov	Dec
# CO2	1245	1249	1253	1257	1264	1260	1259	1293	1299	1300	1291	1303
# CO2 23 to 27	683	872	888	742	824	758	849	831	890	855	857	886
Pop. Mean	23	24	25	24	24	24	24	24	25	25	24	24
Std. Deviation	2.72	2.65	2.67	2.96	2.78	2.78	2.69	2.74	2.80	2.74	2.76	2.67
% CO2 23 to 27	55%	70%	71%	59%	65%	60%	67%	64%	69%	66%	66%	68%



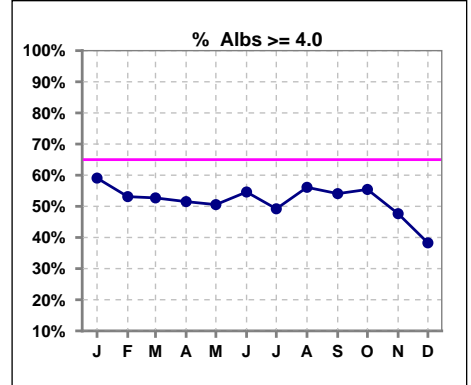
	Jan	Feb	Mar	Apr	May	Jun	Jul	Aug	Sep	Oct	Nov	Dec
# CO2	1245	1249	1253	1257	1264	1260	1259	1293	1299	1300	1291	1303
# CO2 > 27	60	129	162	121	113	121	139	141	178	180	120	130
Pop. Mean	23	24	25	24	24	24	24	24	25	25	24	24
Std. Deviation	2.72	2.65	2.67	2.96	2.78	2.78	2.69	2.74	2.80	2.74	2.76	2.67
% CO2 > 27	5%	10%	13%	10%	9%	10%	11%	11%	14%	14%	9%	10%



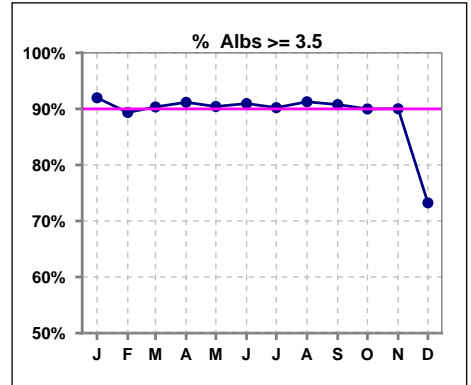
*Albumin values use BCG method - as of July 2001

II. NUTRITION

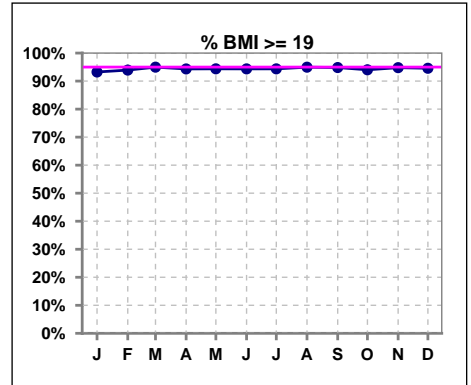
	Jan	Feb	Mar	Apr	May	Jun	Jul	Aug	Sep	Oct	Nov	Dec
# Albumin	1246	1250	1254	1258	1264	1260	1258	1294	1300	1299	1293	1304
# Albumin >= 4.0	736	664	661	648	639	688	619	726	703	720	616	499
Pop. Mean	4.0	3.9	3.9	3.9	3.9	3.9	3.9	4.0	3.9	3.9	3.9	3.7
Std. Deviation	0.37	0.38	0.39	0.37	0.37	0.37	0.36	0.37	0.38	0.39	0.35	0.47
% Alb >= 4.0	59%	53%	53%	52%	51%	55%	49%	56%	54%	55%	48%	38%



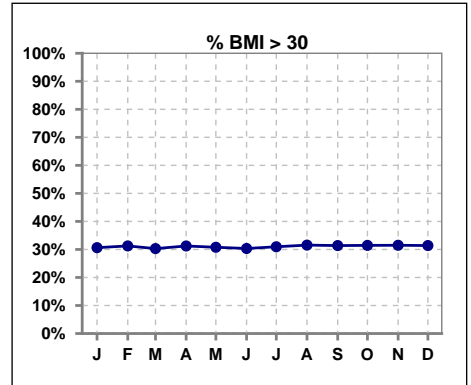
	Jan	Feb	Mar	Apr	May	Jun	Jul	Aug	Sep	Oct	Nov	Dec
# Albumin	1246	1250	1254	1258	1264	1260	1258	1294	1300	1299	1293	1304
# Albumin >= 3.5	1146	1117	1133	1147	1143	1146	1135	1181	1180	1169	1164	955
Pop. Mean	4.0	3.9	3.9	3.9	3.9	3.9	3.9	4.0	3.9	3.9	3.9	3.7
Std. Deviation	0.37	0.38	0.39	0.37	0.37	0.37	0.36	0.37	0.38	0.39	0.35	0.47
% Alb >= 3.5	92%	89%	90%	91%	90%	91%	90%	91%	91%	90%	90%	73%



	Jan	Feb	Mar	Apr	May	Jun	Jul	Aug	Sep	Oct	Nov	Dec
# BMI	1244	1251	1253	1255	1263	1257	1259	1288	1297	1291	1286	1290
# BMI >= 19	1160	1175	1191	1184	1193	1188	1189	1225	1230	1214	1219	1220
Pop. Mean	27	28	28	28	28	28	28	28	28	28	28	28
Std. Deviation	6.9	7.1	7.1	7.1	7.1	7.2	7.1	7.1	7.1	7.1	7.1	6.9
% BMI >= 19	93%	94%	95%	94%	94%	94%	94%	95%	95%	94%	95%	95%



	Jan	Feb	Mar	Apr	May	Jun	Jul	Aug	Sep	Oct	Nov	Dec
# BMI	1244	1251	1253	1255	1263	1257	1259	1288	1297	1291	1286	1290
# BMI > 30	381	391	380	392	389	382	390	407	407	406	405	405
Pop. Mean	27	28	28	28	28	28	28	28	28	28	28	28
Std. Deviation	6.9	7.1	7.1	7.1	7.1	7.2	7.1	7.1	7.1	7.1	7.1	6.9
% BMI > 30	31%	31%	30%	31%	31%	30%	31%	32%	31%	31%	31%	31%

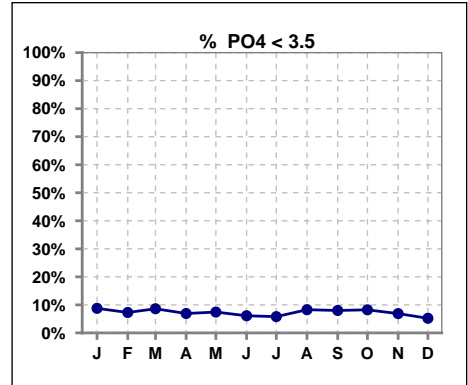


Methodology: a) All labs for 'Adequacy of Dialysis', 'Nutrition', 'Osteodystrophy', 'Anemia' and 'Diabetes' based on last value of month; b) BP's and #L processed are average of all values for month; c) Access data takes last access of month; d) Values for SGA and 'Infection Control' use most recent result.

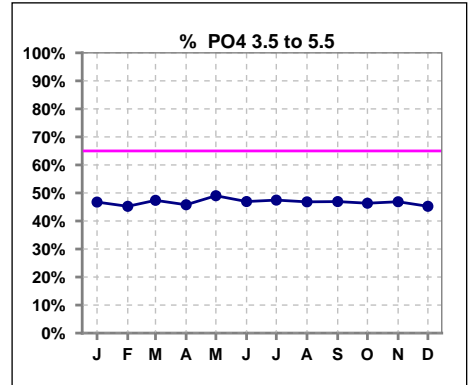
Lab methodology for PTH changed January 2012

III. OSTEODYSTROPHY

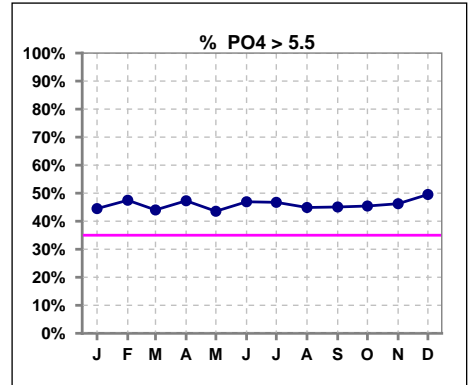
	Jan	Feb	Mar	Apr	May	Jun	Jul	Aug	Sep	Oct	Nov	Dec
# PO4	1245	1249	1254	1258	1265	1259	1258	1294	1300	1299	1293	1304
# PO4 < 3.5	109	91	108	87	94	77	73	107	104	107	89	68
Pop. Mean	5.5	5.7	5.5	5.7	5.6	5.7	5.7	5.6	5.6	5.6	5.7	5.8
Std. Deviation	1.74	1.84	1.77	1.78	1.79	1.80	1.79	1.83	1.82	1.78	1.79	1.77
% PO4 < 3.5	9%	7%	9%	7%	7%	6%	6%	8%	8%	8%	7%	5%



	Jan	Feb	Mar	Apr	May	Jun	Jul	Aug	Sep	Oct	Nov	Dec
# PO4	1245	1249	1254	1258	1265	1259	1258	1294	1300	1299	1293	1304
# PO4 3.5 to 5.5	582	565	594	576	620	591	597	606	610	602	606	590
Pop. Mean	5.5	5.7	5.5	5.7	5.6	5.7	5.7	5.6	5.6	5.6	5.7	5.8
Std. Deviation	1.74	1.84	1.77	1.78	1.79	1.80	1.79	1.83	1.82	1.78	1.79	1.77
% PO4 3.5 to 5.5	47%	45%	47%	46%	49%	47%	47%	47%	47%	46%	47%	45%



	Jan	Feb	Mar	Apr	May	Jun	Jul	Aug	Sep	Oct	Nov	Dec
# PO4	1245	1249	1254	1258	1265	1259	1258	1294	1300	1299	1293	1304
# PO4 > 5.5	554	593	552	595	551	591	588	581	586	590	598	646
Pop. Mean	5.5	5.7	5.5	5.7	5.6	5.7	5.7	5.6	5.6	5.6	5.7	5.8
Std. Deviation	1.74	1.84	1.77	1.78	1.79	1.80	1.79	1.83	1.82	1.78	1.79	1.77
% PO4 > 5.5	44%	47%	44%	47%	44%	47%	47%	45%	45%	45%	46%	50%

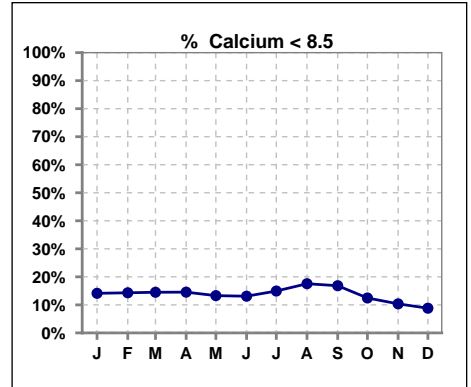


Methodology: a) All labs for 'Adequacy of Dialysis', 'Nutrition', 'Osteodystrophy', 'Anemia' and 'Diabetes' based on last value of month; b) BP's and #L processed are average of all values for month; c) Access data takes last access of month; d) Values for SGA and 'Infection Control' use most recent result.

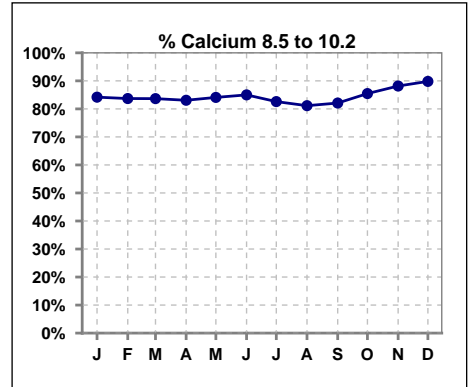
Lab methodology for PTH changed January 2012

III. OSTEODYSTROPHY - CONT.

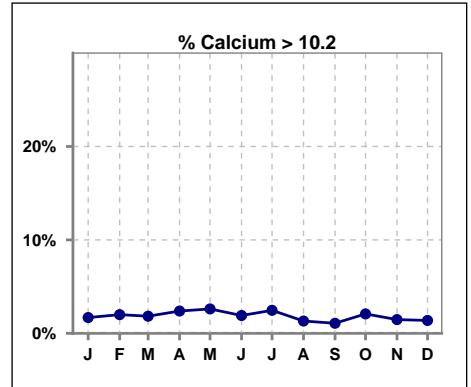
	Jan	Feb	Mar	Apr	May	Jun	Jul	Aug	Sep	Oct	Nov	Dec
# Calcium	1246	1251	1255	1259	1264	1260	1259	1294	1301	1300	1293	1305
# Calcium < 8.5	176	179	182	183	168	165	188	227	219	162	134	115
Pop. Mean	9.1	9.1	9.1	9.1	9.2	9.2	9.1	9.0	9.1	9.2	9.3	9.3
Std. Deviation	0.66	0.67	0.69	0.66	0.69	0.69	0.68	0.65	0.67	0.68	0.65	0.63
% Calcium < 8.5	14%	14%	15%	15%	13%	13%	15%	18%	17%	12%	10%	9%



	Jan	Feb	Mar	Apr	May	Jun	Jul	Aug	Sep	Oct	Nov	Dec
# Calcium	1246	1251	1255	1259	1264	1260	1259	1294	1301	1300	1293	1305
# Calcium 8.5 to 10.2	1049	1047	1050	1046	1063	1071	1040	1050	1068	1111	1140	1172
Pop. Mean	9.1	9.1	9.1	9.1	9.2	9.2	9.1	9.0	9.1	9.2	9.3	9.3
Std. Deviation	0.66	0.67	0.69	0.66	0.69	0.69	0.68	0.65	0.67	0.68	0.65	0.63
% Calcium 8.5 to 10.2	84%	84%	84%	83%	84%	85%	83%	81%	82%	85%	88%	90%



	Jan	Feb	Mar	Apr	May	Jun	Jul	Aug	Sep	Oct	Nov	Dec
# Calcium	1246	1251	1255	1259	1264	1260	1259	1294	1301	1300	1293	1305
# Calcium > 10.2	21	25	23	30	33	24	31	17	14	27	19	18
Pop. Mean	9.1	9.1	9.1	9.1	9.2	9.2	9.1	9.0	9.1	9.2	9.3	9.3
Std. Deviation	0.66	0.67	0.69	0.66	0.69	0.69	0.68	0.65	0.67	0.68	0.65	0.63
% Calcium > 10.2	2%	2%	2%	2%	3%	2%	2%	1%	1%	2%	1%	1%

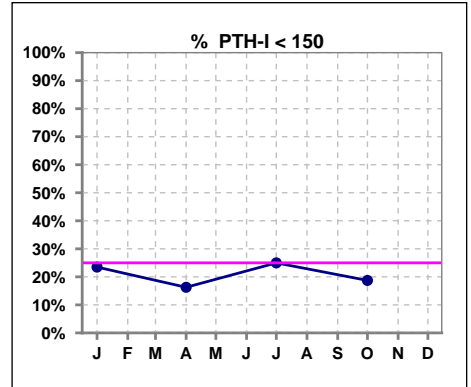


Methodology: a) All labs for 'Adequacy of Dialysis', 'Nutrition', 'Osteodystrophy', 'Anemia' and 'Diabetes' based on last value of month; b) BP's and #L processed are average of all values for month; c) Access data takes last access of month; d) Values for SGA and 'Infection Control' use most recent result.

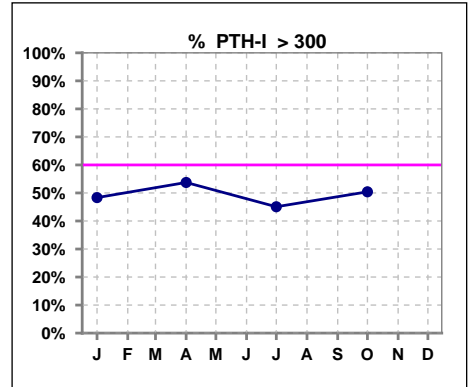
Lab methodology for PTH changed January 2012

III. OSTEODYSTROPHY - CONT.

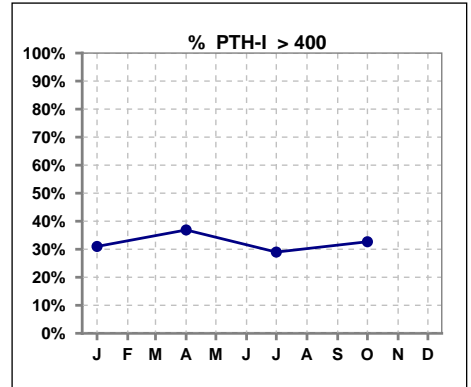
	Jan	Feb	Mar	Apr	May	Jun	Jul	Aug	Sep	Oct	Nov	Dec
# PTH-I	1239			1174			1249			1218		
# PTH-I < 150	291			191			312			228		
Pop. Mean	345			383			345			365		
Std. Deviation	263			282			318			289		
% PTH-I < 150	23%			16%			25%			19%		



	Jan	Feb	Mar	Apr	May	Jun	Jul	Aug	Sep	Oct	Nov	Dec
# PTH-I	1239			1174			1249			1218		
# PTH-I > 300	599			631			563			614		
Pop. Mean	345			383			345			365		
Std. Deviation	263			282			318			289		
% PTH-I > 300	48%			54%			45%			50%		



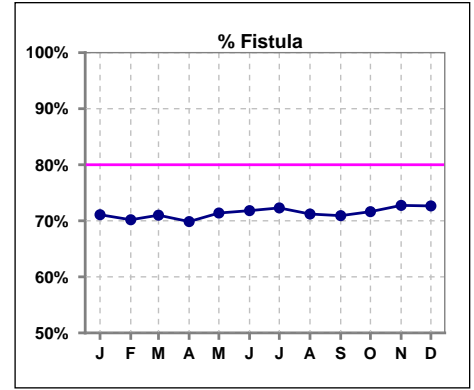
	Jan	Feb	Mar	Apr	May	Jun	Jul	Aug	Sep	Oct	Nov	Dec
# PTH-I	1239			1174			1249			1218		
# PTH-I > 400	384			433			362			398		
Pop. Mean	345			383			345			365		
Std. Deviation	263			282			318			289		
% PTH-I > 400	31%			37%			29%			33%		



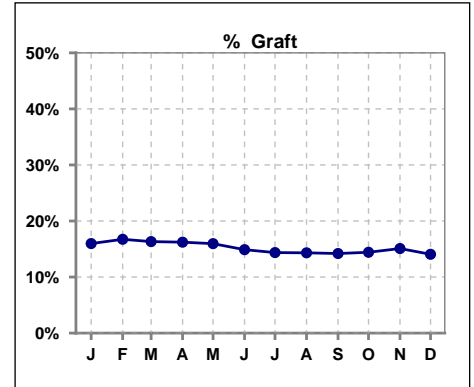
Methodology: a) All labs for 'Adequacy of Dialysis', 'Nutrition', 'Osteodystrophy', 'Anemia' and 'Diabetes' based on last value of month; b) BP's and #L processed are average of all values for month; c) Access data takes last access of month; d) Values for SGA and 'Infection Control' use most recent result.

IV. ACCESS

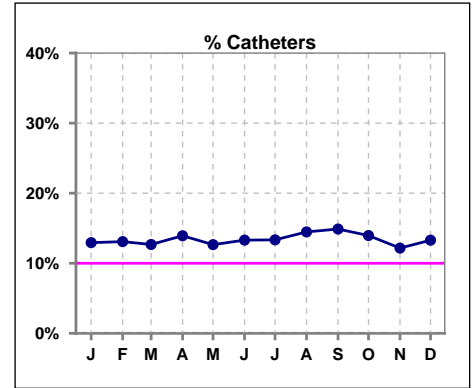
	Jan	Feb	Mar	Apr	May	Jun	Jul	Aug	Sep	Oct	Nov	Dec
# Access	1251	1261	1262	1264	1272	1263	1264	1298	1310	1304	1299	1308
# Fistula	890	885	896	883	908	907	916	925	929	934	945	951
% Fistula	71%	70%	71%	70%	71%	72%	72%	71%	71%	72%	73%	73%



	Jan	Feb	Mar	Apr	May	Jun	Jul	Aug	Sep	Oct	Nov	Dec
# Access	1251	1261	1262	1264	1272	1263	1264	1298	1310	1304	1299	1308
# Graft	200	211	206	205	203	188	182	186	186	188	196	184
% Graft	16%	17%	16%	16%	16%	15%	14%	14%	14%	14%	15%	14%



	Jan	Feb	Mar	Apr	May	Jun	Jul	Aug	Sep	Oct	Nov	Dec
# Access	1251	1261	1262	1264	1272	1263	1264	1298	1310	1304	1299	1308
# Catheters	162	165	160	176	161	168	169	188	195	182	158	174
% Catheters	13%	13%	13%	14%	13%	13%	13%	14%	15%	14%	12%	13%



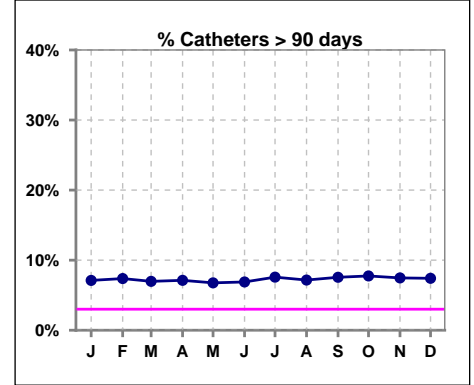
Methodology: a) All labs for 'Adequacy of Dialysis', 'Nutrition', 'Osteodystrophy', 'Anemia' and 'Diabetes' based on last value of month; b) BP's and #L processed are average of all values for month; c) Access data takes last access of month; d) Values for SGA and 'Infection Control' use most recent result.

IV. ACCESS - CONT.

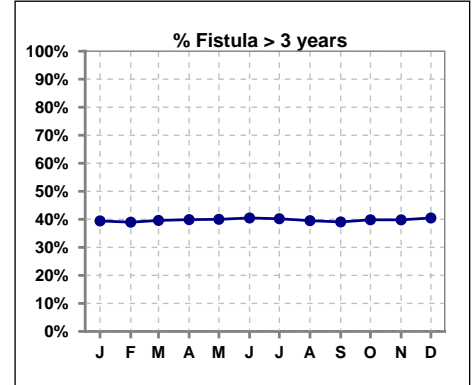
Catheters > 90 days

	Jan	Feb	Mar	Apr	May	Jun	Jul	Aug	Sep	Oct	Nov	Dec
# Access	1252	1261	1262	1264	1272	1263	1267	1299	1310	1304	1299	1309
# Catheters	89	93	88	90	86	87	96	93	99	101	97	97
% Catheters	7%	7%	7%	7%	7%	7%	8%	7%	8%	8%	7%	7%

Definition: Catheter in use on last treatment of the month



	Jan	Feb	Mar	Apr	May	Jun	Jul	Aug	Sep	Oct	Nov	Dec
# Fistula	903	903	904	905	910	914	913	931	942	949	957	956
# Fistula > 3 yrs	356	352	358	361	364	370	367	368	368	378	381	387
% Fistula > 3 yrs	39%	39%	40%	40%	40%	40%	40%	40%	39%	40%	40%	40%



Methodology: a) All labs for 'Adequacy of Dialysis', 'Nutrition', 'Osteodystrophy', 'Anemia' and 'Diabetes' based on last value of month; b) BP's and #L processed are average of all values for month; c) Access data takes last access of month; d) Values for SGA and 'Infection Control' use most recent result.

All rates are calculated per 100 patient-month

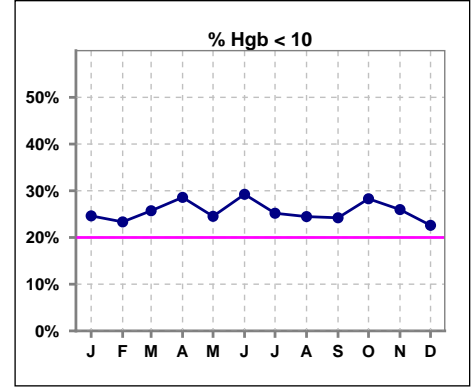
(number of infections/number of accesses x100)

NKC Consolidated																
NKC	Total	Fistula	Fistula ARB	National	Total	Graft	Graft ARB	National	Total	Cath	Cath ARB	National	Total	Total	All ARB Rate	National
2014-2015	Fistula	Infected	Rate	Rate	Grafts	Infected	Rate	Rate	Cath	Infected	Rate	Rate	Accesses	Access	Per 100 pt-	Rate
Month														Infected	Months	
Dec	877	0	0.00		216	0	0.00		146	1	0.68		1239	1	0.08	
Jan	880	0	0.00		207	0	0.00		144	0	0.00		1231	0	0.00	
Feb	880	1	0.11		209	1	0.48		142	0	0.00		1231	2	0.16	
Mar	893	0	0.00		206	0	0.00		141	0	0.00		1240	0	0.00	
April	889	0	0.00		205	0	0.00		142	0	0.00		1236	0	0.00	
May	905	1	0.11		189	0	0.00		155	1	0.65		1249	2	0.16	
June	883	0	0.00		197	0	0.00		129	2	1.55		1209	2	0.17	
July	909	0	0.00		196	0	0.00		140	0	0.00		1245	0	0.00	
Aug	905	0	0.00		204	0	0.00		149	0	0.00		1258	0	0.00	
Sept	923	0	0.00		198	1	0.51		157	2	1.27		1278	3	0.23	
Oct	937	0	0.00		190	0	0.00		159	0	0.00		1286	0	0.00	
Nov	947	1	0.11		190	0	0.00		138	0	0.00		1275	1	0.08	
Annual Total:	6207	2	0.03	0.23	1829	2	0.11	0.51	1742	6	0.34	2.55	FALSE	10	#DIV/0!	0.88

V. ANEMIA

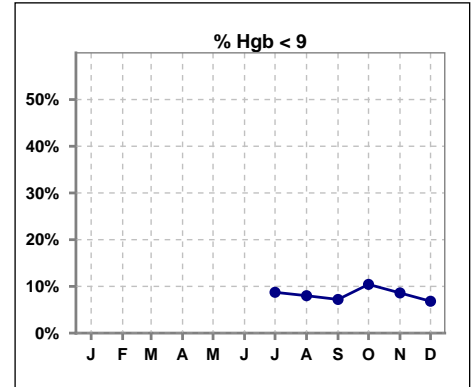
	Jan	Feb	Mar	Apr	May	Jun	Jul	Aug	Sep	Oct	Nov	Dec
# Hgb	1068	1020	1038	1053	1056	1084	1076	1087	1111	1103	1082	1115
# Hgb < 10	263	238	267	301	259	317	271	266	269	312	281	252
Pop. Mean	10.6	10.6	10.5	10.5	10.5	10.4	10.6	10.5	10.6	10.4	10.5	10.6
Std. Deviation	1.1	1.1	1.1	1.2	1.1	1.1	1.1	1.1	1.1	1.1	1.1	1.0
% Hgb < 10	25%	23%	26%	29%	25%	29%	25%	24%	24%	28%	26%	23%

Note: Excludes patients who received no ESA in month.



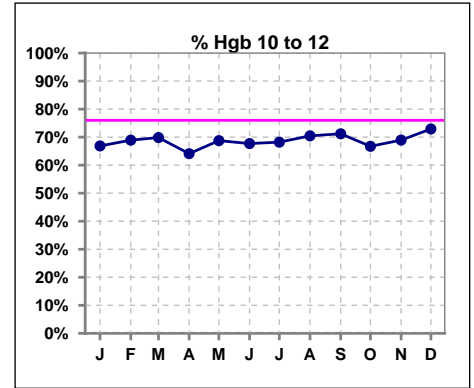
	Jan	Feb	Mar	Apr	May	Jun	Jul	Aug	Sep	Oct	Nov	Dec
# Hgb							1076	1087	1111	1103	1082	1115
# Hgb < 9							94	87	80	115	93	76
Pop. Mean							10.6	10.5	10.6	10.4	10.5	10.6
Std. Deviation							1.1	1.1	1.1	1.1	1.1	1.0
% Hgb < 9							9%	8%	7%	10%	9%	7%

Note: Excludes patients who received no ESA in month.



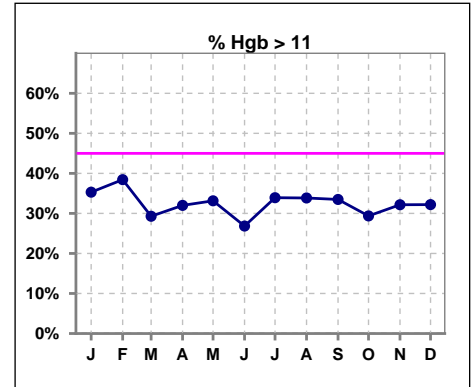
	Jan	Feb	Mar	Apr	May	Jun	Jul	Aug	Sep	Oct	Nov	Dec
# Hgb	1068	1020	1038	1053	1056	1084	1076	1087	1111	1103	1082	1115
# Hgb 10 to 12	714	703	725	675	726	734	734	766	791	736	746	813
Pop. Mean	10.6	10.6	10.5	10.5	10.5	10.4	10.6	10.5	10.6	10.4	10.5	10.6
Std. Deviation	1.1	1.1	1.1	1.2	1.1	1.1	1.1	1.1	1.1	1.1	1.1	1.0
% Hgb 10 to 12	67%	69%	70%	64%	69%	68%	68%	70%	71%	67%	69%	73%

Note: Excludes patients who received no ESA in month.



	Jan	Feb	Mar	Apr	May	Jun	Jul	Aug	Sep	Oct	Nov	Dec
# Hgb	1068	1020	1038	1053	1056	1084	1076	1087	1111	1103	1082	1115
# Hgb > 11	377	392	304	337	350	291	365	368	372	324	348	359
Pop. Mean	10.6	10.6	10.5	10.5	10.5	10.4	10.6	10.5	10.6	10.4	10.5	10.6
Std. Deviation	1.1	1.1	1.1	1.2	1.1	1.1	1.1	1.1	1.1	1.1	1.1	1.0
% Hgb > 11	35%	38%	29%	32%	33%	27%	34%	34%	33%	29%	32%	32%

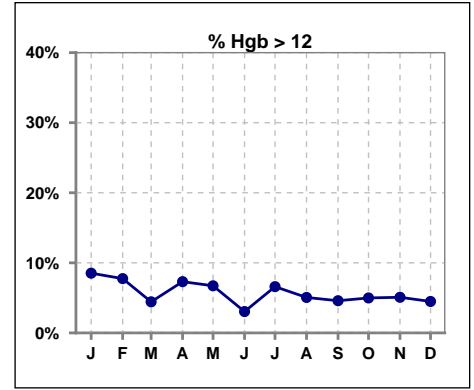
Note: Excludes patients who received no ESA in month.



V. ANEMIA - CONT.

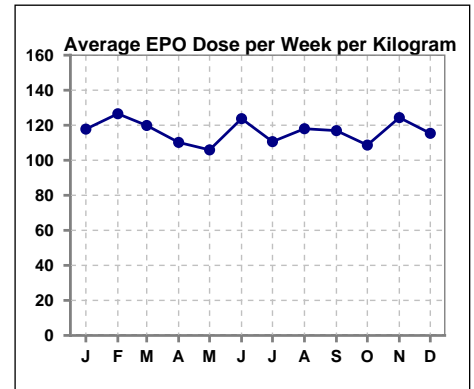
	Jan	Feb	Mar	Apr	May	Jun	Jul	Aug	Sep	Oct	Nov	Dec
# Hgb	1068	1020	1038	1053	1056	1084	1076	1087	1111	1103	1082	1115
# Hgb > 12	91	79	46	77	71	33	71	55	51	55	55	50
Pop. Mean	10.6	10.6	10.5	10.5	10.5	10.4	10.6	10.5	10.6	10.4	10.5	10.6
Std. Deviation	1.1	1.1	1.1	1.2	1.1	1.1	1.1	1.1	1.1	1.1	1.1	1.0
% Hgb > 12	9%	8%	4%	7%	7%	3%	7%	5%	5%	5%	5%	4%

Note: Excludes patients who received no ESA in month.



Average EPO Dose per Week per Kilogram

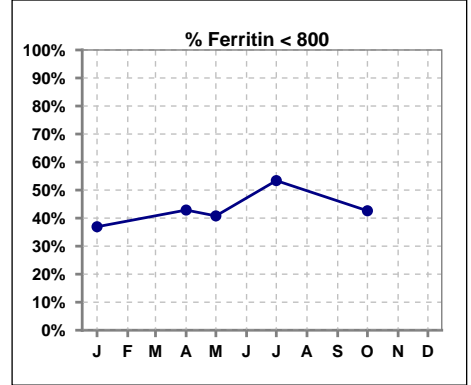
	Jan	Feb	Mar	Apr	May	Jun	Jul	Aug	Sep	Oct	Nov	Dec
# Average EPO	117.8	126.6	119.9	110.2	105.9	123.8	110.6	118.0	116.9	108.7	124.4	115.4



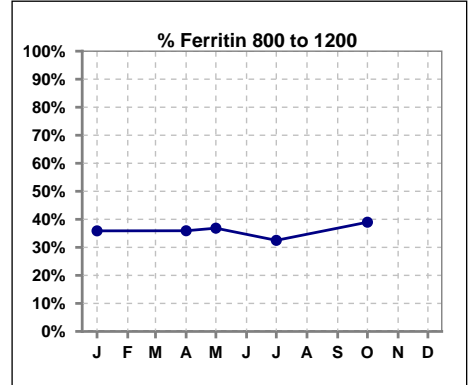
V. ANEMIA - CONT.

Iron Profile

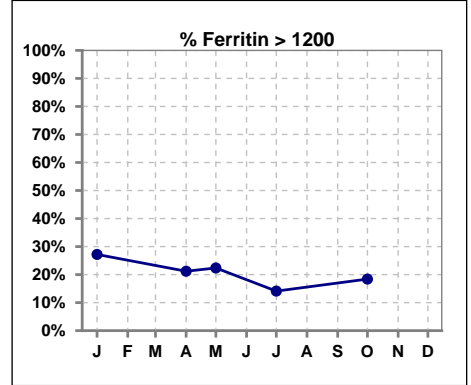
	Jan	Feb	Mar	Apr	May	Jun	Jul	Aug	Sep	Oct	Nov	Dec
# Ferritin	1243			1250	304		1240			1288		
# Ferritin < 800	459			536	124		662			549		
Pop. Mean	982			907	911		805			901		
Std. Deviation	498			498	461		419			461		
% Ferritin < 800	37%			43%	41%		53%			43%		



	Jan	Feb	Mar	Apr	May	Jun	Jul	Aug	Sep	Oct	Nov	Dec
# Ferritin	1243			1250	304		1240			1288		
# Ferritin 800 to 1200	446			449	112		403			502		
Pop. Mean	982			907	911		805			901		
Std. Deviation	498			498	461		419			461		
% Ferritin 800 to 1200	36%			36%	37%		33%			39%		



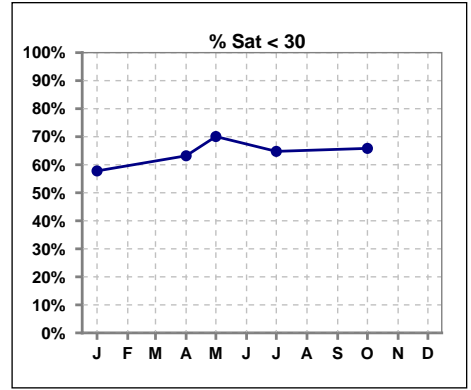
	Jan	Feb	Mar	Apr	May	Jun	Jul	Aug	Sep	Oct	Nov	Dec
# Ferritin	1243			1250	304		1240			1288		
# Ferritin > 1200	338			265	68		175			237		
Pop. Mean	982			907	911		805			901		
Std. Deviation	498			498	461		419			461		
% Ferritin > 1200	27%			21%	22%		14%			18%		



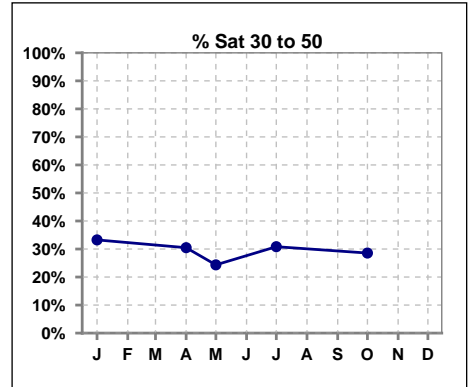
Methodology: a) All labs for 'Adequacy of Dialysis', 'Nutrition', 'Osteodystrophy', 'Anemia' and 'Diabetes' based on last value of month; b) BP's and #L processed are average of all values for month; c) Access data takes last access of month; d) Values for SGA and 'Infection Control' use most recent result.

V. ANEMIA - CONT.

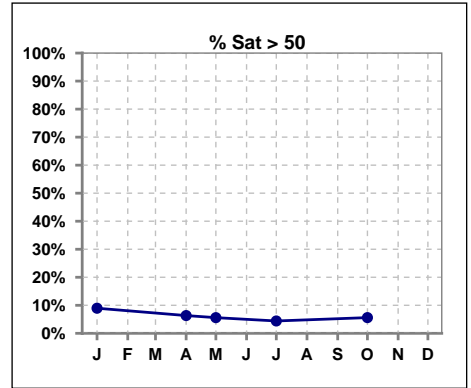
	Jan	Feb	Mar	Apr	May	Jun	Jul	Aug	Sep	Oct	Nov	Dec
# % Sat	1239			1247	304		1249			1285		
# % Sat < 30	716			788	213		809			846		
Pop. Mean	30			28	26		27			28		
Std. Deviation	15			14	14		12			13		
% % Sat < 30	58%			63%	70%		65%			66%		



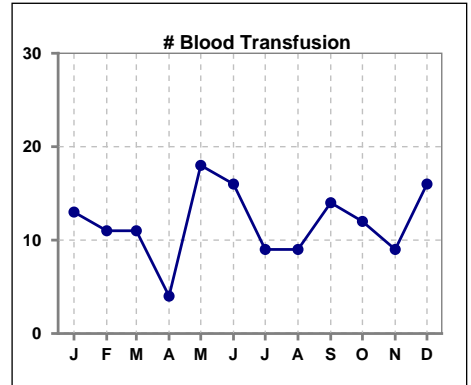
	Jan	Feb	Mar	Apr	May	Jun	Jul	Aug	Sep	Oct	Nov	Dec
# % Sat	1239			1247	304		1249			1285		
# % Sat 30 to 50	412			380	74		385			367		
Pop. Mean	30			28	26		27			28		
Std. Deviation	15			14	14		12			13		
% % Sat 30 to 50	33%			30%	24%		31%			29%		



	Jan	Feb	Mar	Apr	May	Jun	Jul	Aug	Sep	Oct	Nov	Dec
# % Sat	1239			1247	304		1249			1285		
# % Sat > 50	111			79	17		55			72		
Pop. Mean	30			28	26		27			28		
Std. Deviation	15			14	14		12			13		
% % Sat > 50	9%			6%	6%		4%			6%		



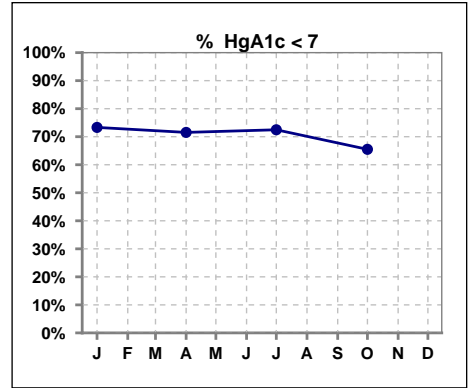
	Jan	Feb	Mar	Apr	May	Jun	Jul	Aug	Sep	Oct	Nov	Dec
# Patient	1257	1266	1268	1274	1284	1280	1284	1309	1321	1311	1309	1320
# Blood Transfusion	13	11	11	4	18	16	9	9	14	12	9	16



Methodology: a) All labs for 'Adequacy of Dialysis', 'Nutrition', 'Osteodystrophy', 'Anemia' and 'Diabetes' based on last value of month; b) BP's and #L processed are average of all values for month; c) Access data takes last access of month; d) Values for SGA and 'Infection Control' use most recent result.

VI. Diabetes

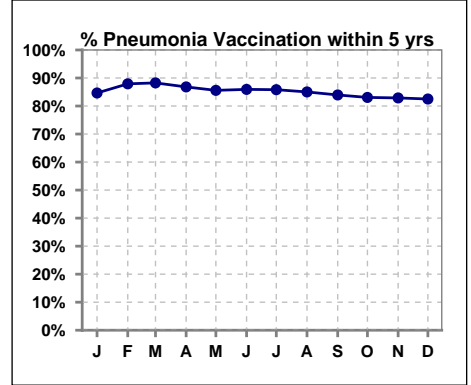
	Jan	Feb	Mar	Apr	May	Jun	Jul	Aug	Sep	Oct	Nov	Dec
# HgA1c	611			636			654			658		
# HgA1c < 7	448			455			474			431		
Pop. Mean	6.4			6.4			6.4			6.7		
Std. Deviation	1.22			1.19			1.18			1.23		
% HgA1c < 7	73%			72%			72%			66%		



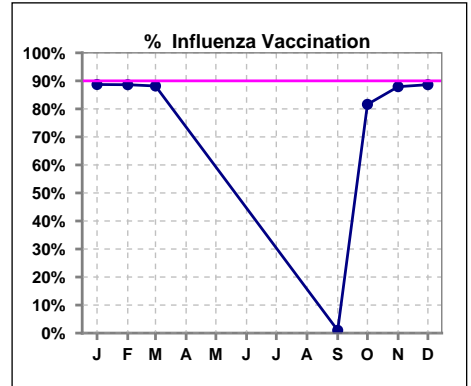
VII. Infection Control

Pneumonia vaccination within the past five years

	Jan	Feb	Mar	Apr	May	Jun	Jul	Aug	Sep	Oct	Nov	Dec
# Patient	1257	1266	1268	1274	1284	1280	1284	1309	1321	1311	1309	1320
# Pneumonia	1064	1113	1120	1107	1100	1101	1103	1113	1110	1090	1085	1089
% Pneumonia	85%	88%	88%	87%	86%	86%	86%	85%	84%	83%	83%	83%



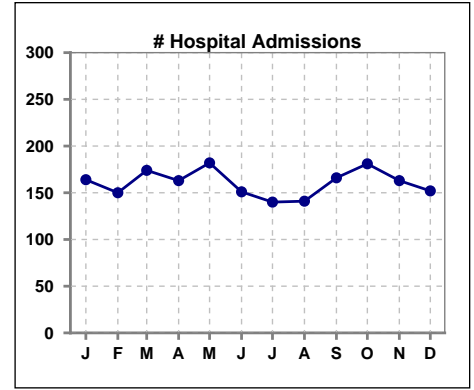
	Jan	Feb	Mar	Apr	May	Jun	Jul	Aug	Sep	Oct	Nov	Dec
# Patient	1257	1266	1268						1321	1311	1309	1320
# Influenza	1115	1122	1118						13	1070	1151	1170
% Influenza	89%	89%	88%						1%	82%	88%	89%



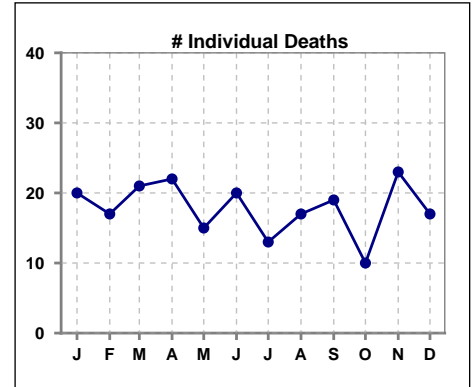
Methodology: a) All labs for 'Adequacy of Dialysis', 'Nutrition', 'Osteodystrophy', 'Anemia' and 'Diabetes' based on last value of month; b) BP's and #L processed are average of all values for month; c) Access data takes last access of month; d) Values for SGA and 'Infection Control' use most recent result.

VIII. Outcome measures

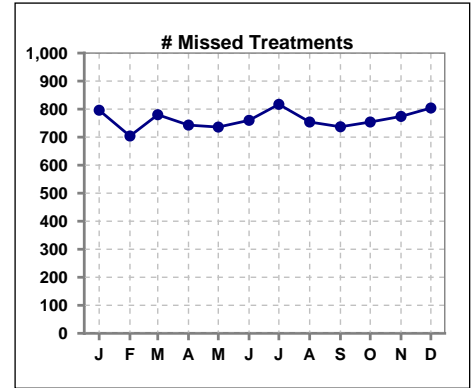
	Jan	Feb	Mar	Apr	May	Jun	Jul	Aug	Sep	Oct	Nov	Dec
# Patient	1257	1266	1268	1274	1284	1280	1284	1309	1321	1311	1309	1320
# Hospital Admissions	164	150	174	163	182	151	140	141	166	181	163	152



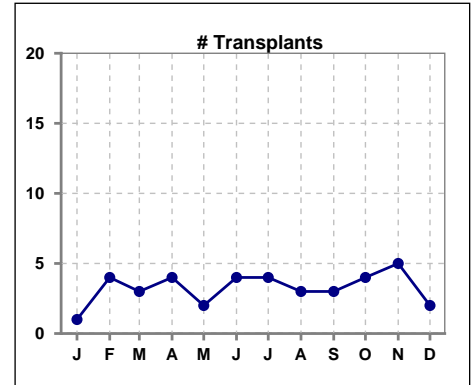
	Jan	Feb	Mar	Apr	May	Jun	Jul	Aug	Sep	Oct	Nov	Dec
# Patient	1257	1266	1268	1274	1284	1280	1284	1309	1321	1311	1309	1320
# Individual Deaths	20	17	21	22	15	20	13	17	19	10	23	17



	Jan	Feb	Mar	Apr	May	Jun	Jul	Aug	Sep	Oct	Nov	Dec
# Patient	1257	1266	1268	1274	1284	1280	1284	1309	1321	1311	1309	1320
# Missed Treatments	796	704	780	743	736	760	817	754	737	754	774	804



	Jan	Feb	Mar	Apr	May	Jun	Jul	Aug	Sep	Oct	Nov	Dec
# Patient	1257	1266	1268	1274	1284	1280	1284	1309	1321	1311	1309	1320
# Transplants	1	4	3	4	2	4	4	3	3	4	5	2



Methodology: a) All labs for 'Adequacy of Dialysis', 'Nutrition', 'Osteodystrophy', 'Anemia' and 'Diabetes' based on last value of month; b) BP's and #L processed are average of all values for month; c) Access data takes last access of month; d) Values for SGA and 'Infection Control' use most recent result.