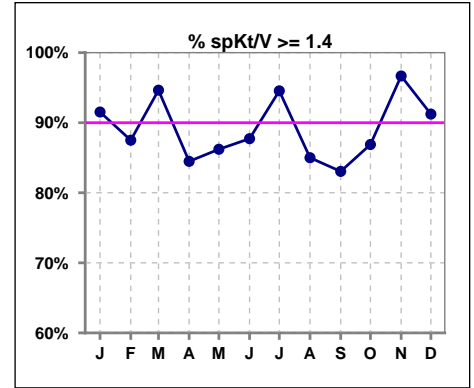
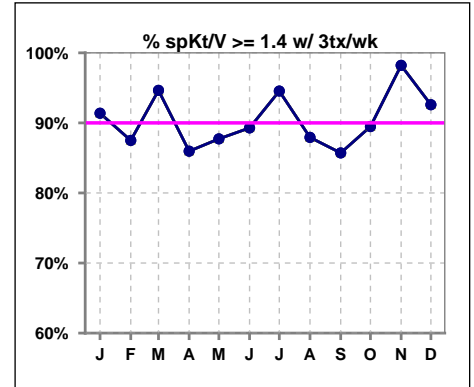


I. ADEQUACY OF DIALYSIS

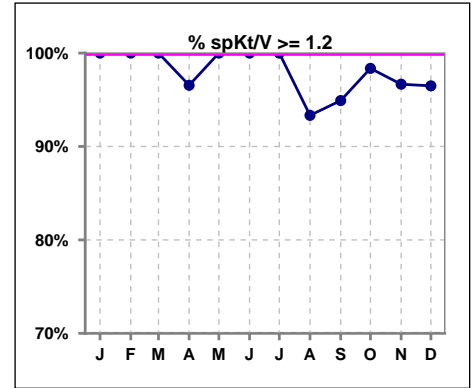
	Jan	Feb	Mar	Apr	May	Jun	Jul	Aug	Sep	Oct	Nov	Dec
# spKt/V	59	56	56	58	58	57	55	60	59	61	60	57
# spKt/V >= 1.4	54	49	53	49	50	50	52	51	49	53	58	52
Pop. Mean	1.68	1.64	1.70	1.66	1.68	1.68	1.71	1.61	1.64	1.69	1.76	1.71
Std. Deviation	0.24	0.22	0.20	0.28	0.24	0.24	0.21	0.27	0.31	0.28	0.28	0.28
% spKt/V >= 1.4	92%	88%	95%	84%	86%	88%	95%	85%	83%	87%	97%	91%



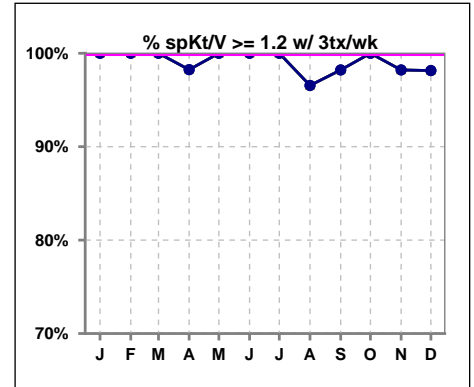
	Jan	Feb	Mar	Apr	May	Jun	Jul	Aug	Sep	Oct	Nov	Dec
# spKt/V w/ 3tx/wk	58	56	56	57	57	56	55	58	56	57	56	54
# spKt/V >= 1.4 w/3tx/wk	53	49	53	49	50	50	52	51	48	51	55	50
Pop. Mean	1.68	1.64	1.70	1.67	1.68	1.69	1.71	1.64	1.67	1.71	1.78	1.72
Std. Deviation	0.24	0.22	0.20	0.27	0.23	0.23	0.21	0.24	0.28	0.27	0.27	0.27
% >= 1.4 w/3tx/wk	91%	88%	95%	86%	88%	89%	95%	88%	86%	89%	98%	93%



	Jan	Feb	Mar	Apr	May	Jun	Jul	Aug	Sep	Oct	Nov	Dec
# spKt/V	59	56	56	58	58	57	55	60	59	61	60	57
# spKt/V >= 1.2	59	56	56	56	58	57	55	56	56	60	58	55
Pop. Mean	1.68	1.64	1.70	1.66	1.68	1.68	1.71	1.61	1.64	1.69	1.76	1.71
Std. Deviation	0.24	0.22	0.20	0.28	0.24	0.24	0.21	0.27	0.31	0.28	0.28	0.28
% spKt/V >= 1.2	100%	100%	100%	97%	100%	100%	100%	93%	95%	98%	97%	96%



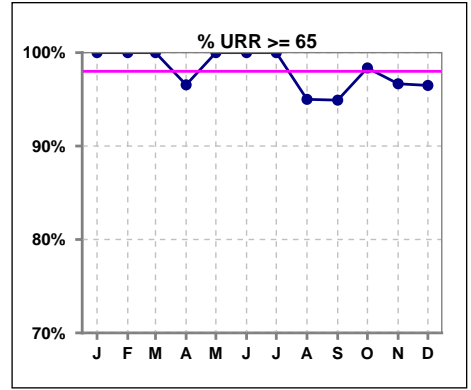
	Jan	Feb	Mar	Apr	May	Jun	Jul	Aug	Sep	Oct	Nov	Dec
# spKt/V w/ 3tx/wk	58	56	56	57	57	56	55	58	56	57	56	54
# spKt/V >= 1.2 w/3tx/wk	58	56	56	56	57	56	55	56	55	57	55	53
Pop. Mean	1.68	1.64	1.70	1.67	1.68	1.69	1.71	1.64	1.67	1.71	1.78	1.72
Std. Deviation	0.24	0.22	0.20	0.27	0.23	0.23	0.21	0.24	0.28	0.27	0.27	0.27
% >= 1.2 w/3tx/wk	100%	100%	100%	98%	100%	100%	100%	97%	98%	100%	98%	98%



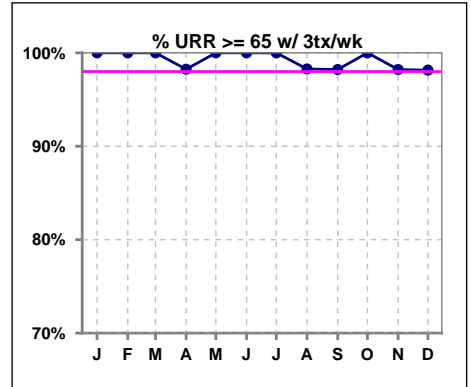
Methodology: a) All labs for 'Adequacy of Dialysis', 'Nutrition', 'Osteodystrophy', 'Anemia' and 'Diabetes' based on last value of month; b) BP's and #L processed are average of all values for month; c) Access data takes last access of month; d) Values for SGA and 'Infection Control' use most recent result.

I. ADEQUACY OF DIALYSIS - CONT.

	Jan	Feb	Mar	Apr	May	Jun	Jul	Aug	Sep	Oct	Nov	Dec
# URR	59	56	56	58	58	57	55	60	59	61	60	57
# URR >= 65	59	56	56	56	58	57	55	57	56	60	58	55
Pop. Mean	77	76	77	76	76	77	77	75	75	77	78	77
Std. Deviation	4.76	4.29	3.92	5.87	4.76	4.61	4.15	6.06	6.45	5.36	5.12	5.56
% URR >= 65	100%	100%	100%	97%	100%	100%	100%	95%	95%	98%	97%	96%



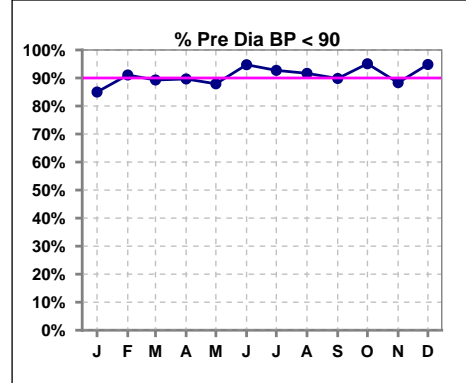
	Jan	Feb	Mar	Apr	May	Jun	Jul	Aug	Sep	Oct	Nov	Dec
# URR w/ 3tx/wk	58	56	56	57	57	56	55	58	56	57	56	54
# URR >=65 w/ 3tx/wk	58	56	56	56	57	56	55	57	55	57	55	53
Pop. Mean	77	76	77	76	77	77	77	76	76	77	78	77
Std. Deviation	4.78	4.29	3.92	5.47	4.60	4.59	4.15	5.23	5.55	4.97	4.73	5.27
% URR >=65 w/ 3tx/wk	100%	100%	100%	98%	100%	100%	100%	98%	98%	100%	98%	98%



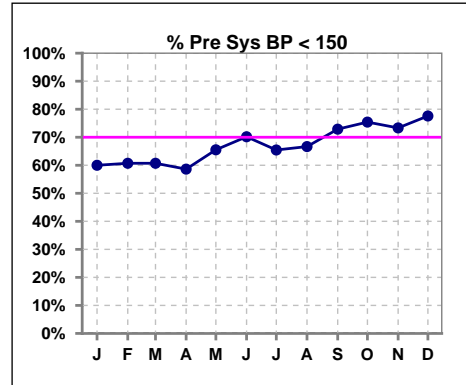
I. ADEQUACY OF DIALYSIS - CONT.

Blood Pressure Control (Pre)

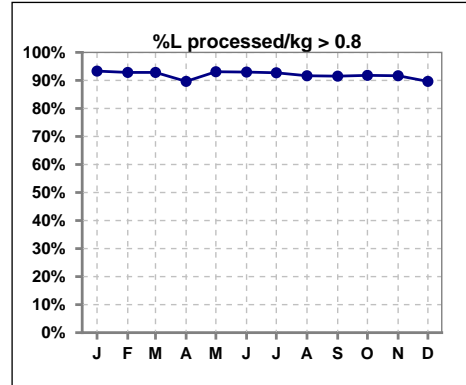
	Jan	Feb	Mar	Apr	May	Jun	Jul	Aug	Sep	Oct	Nov	Dec
# Pre Dia BP	60	56	56	58	58	57	55	60	59	61	60	58
# Pre Dia BP < 90	51	51	50	52	51	54	51	55	53	58	53	55
Pop. Mean	73	72	73	73	72	73	72	72	73	71	75	75
Std. Deviation	13.8	12.3	12.3	13.2	13.9	13.4	14.3	14.3	13.8	13.3	13.2	12.7
% Pre Dia BP < 90	85%	91%	89%	90%	88%	95%	93%	92%	90%	95%	88%	95%



	Jan	Feb	Mar	Apr	May	Jun	Jul	Aug	Sep	Oct	Nov	Dec
# Pre Sys BP	60	56	56	58	58	57	55	60	59	61	60	58
# Pre Sys BP < 150	36	34	34	34	38	40	36	40	43	46	44	45
Pop. Mean	142	142	141	142	139	139	139	138	137	134	137	138
Std. Deviation	22.1	20.3	20.3	22.5	21.0	20.0	21.6	23.7	23.3	23.6	20.2	20.7
%Pre Sys BP <150	60%	61%	61%	59%	66%	70%	65%	67%	73%	75%	73%	78%

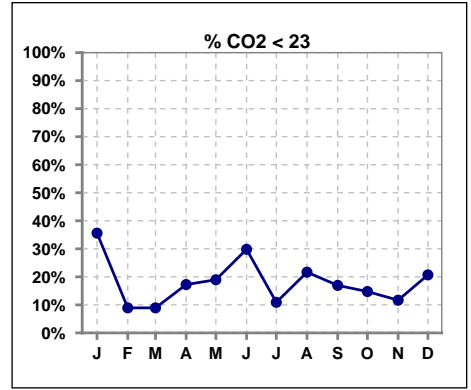


	Jan	Feb	Mar	Apr	May	Jun	Jul	Aug	Sep	Oct	Nov	Dec
# L processed/kg	60	56	56	58	58	57	55	60	59	61	60	58
# L processed/kg>0.8	56	52	52	52	54	53	51	55	54	56	55	52
Pop. Mean	1	1	1	1	1	1	1	1	1	1	1	1
Std. Deviation	0.3	0.3	0.3	0.3	0.3	0.3	0.3	0.3	0.3	0.3	0.3	0.3
% L processed/kg>0.8	93%	93%	93%	90%	93%	93%	93%	92%	92%	92%	92%	90%

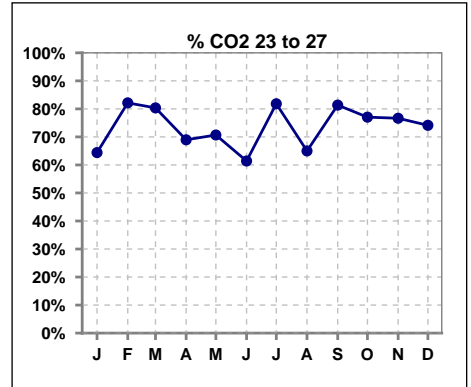


I. ADEQUACY OF DIALYSIS - CONT.

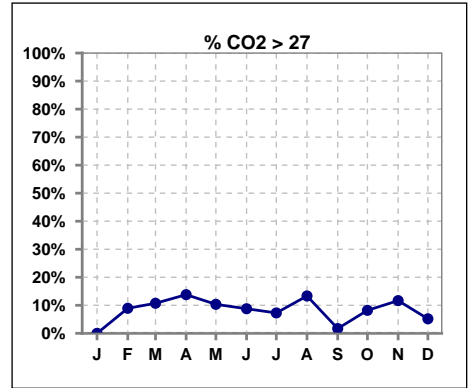
	Jan	Feb	Mar	Apr	May	Jun	Jul	Aug	Sep	Oct	Nov	Dec
# CO2	59	56	56	58	58	57	55	60	59	61	60	58
# CO2 < 23	21	5	5	10	11	17	6	13	10	9	7	12
Pop. Mean	23	25	25	25	24	24	25	25	24	25	25	24
Std. Deviation	2.22	1.99	2.19	2.65	2.68	2.59	1.83	2.47	2.15	2.20	2.44	2.21
% CO2 < 23	36%	9%	9%	17%	19%	30%	11%	22%	17%	15%	12%	21%



	Jan	Feb	Mar	Apr	May	Jun	Jul	Aug	Sep	Oct	Nov	Dec
# CO2	59	56	56	58	58	57	55	60	59	61	60	58
# CO2 23 to 27	38	46	45	40	41	35	45	39	48	47	46	43
Pop. Mean	23	25	25	25	24	24	25	25	24	25	25	24
Std. Deviation	2.22	1.99	2.19	2.65	2.68	2.59	1.83	2.47	2.15	2.20	2.44	2.21
% CO2 23 to 27	64%	82%	80%	69%	71%	61%	82%	65%	81%	77%	77%	74%



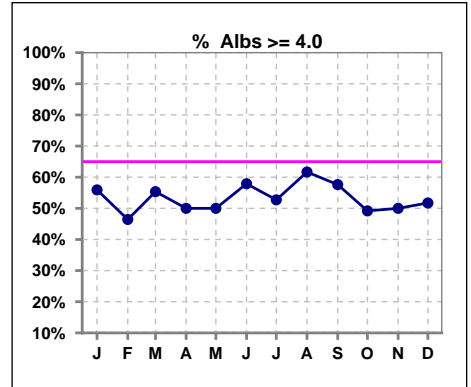
	Jan	Feb	Mar	Apr	May	Jun	Jul	Aug	Sep	Oct	Nov	Dec
# CO2	59	56	56	58	58	57	55	60	59	61	60	58
# CO2 > 27	0	5	6	8	6	5	4	8	1	5	7	3
Pop. Mean	23	25	25	25	24	24	25	25	24	25	25	24
Std. Deviation	2.22	1.99	2.19	2.65	2.68	2.59	1.83	2.47	2.15	2.20	2.44	2.21
% CO2 > 27	0%	9%	11%	14%	10%	9%	7%	13%	2%	8%	12%	5%



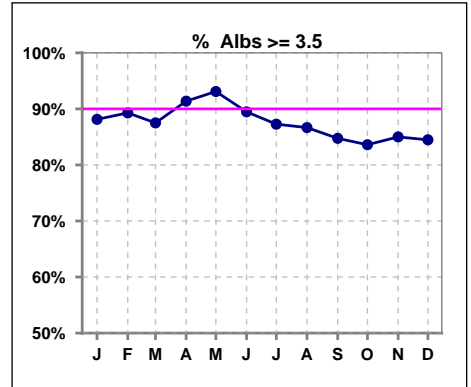
*Albumin values use BCG method - as of July 2001

II. NUTRITION

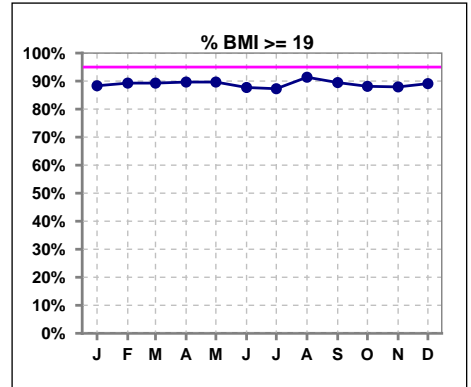
	Jan	Feb	Mar	Apr	May	Jun	Jul	Aug	Sep	Oct	Nov	Dec
# Albumin	59	56	56	58	58	57	55	60	59	61	60	58
# Albumin >= 4.0	33	26	31	29	29	33	29	37	34	30	30	30
Pop. Mean	4.0	3.9	3.9	3.9	3.9	3.9	3.9	4.0	4.0	3.9	3.9	3.8
Std. Deviation	0.38	0.38	0.38	0.31	0.29	0.35	0.37	0.41	0.40	0.43	0.42	0.44
% Alb >= 4.0	56%	46%	55%	50%	50%	58%	53%	62%	58%	49%	50%	52%



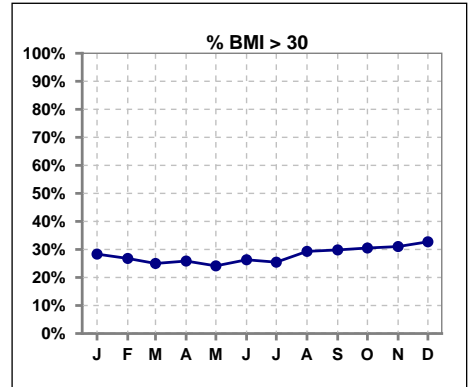
	Jan	Feb	Mar	Apr	May	Jun	Jul	Aug	Sep	Oct	Nov	Dec
# Albumin	59	56	56	58	58	57	55	60	59	61	60	58
# Albumin >= 3.5	52	50	49	53	54	51	48	52	50	51	51	49
Pop. Mean	4.0	3.9	3.9	3.9	3.9	3.9	3.9	4.0	4.0	3.9	3.9	3.8
Std. Deviation	0.38	0.38	0.38	0.31	0.29	0.35	0.37	0.41	0.40	0.43	0.42	0.44
% Alb >= 3.5	88%	89%	88%	91%	93%	89%	87%	87%	85%	84%	85%	84%



	Jan	Feb	Mar	Apr	May	Jun	Jul	Aug	Sep	Oct	Nov	Dec
# BMI	60	56	56	58	58	57	55	58	57	59	58	55
# BMI >= 19	53	50	50	52	52	50	48	53	51	52	51	49
Pop. Mean	26	26	26	26	26	26	26	27	27	27	27	27
Std. Deviation	6.0	6.0	6.0	6.6	6.6	6.7	6.3	6.6	6.8	6.7	6.7	6.7
% BMI >= 19	88%	89%	89%	90%	90%	88%	87%	91%	89%	88%	88%	89%



	Jan	Feb	Mar	Apr	May	Jun	Jul	Aug	Sep	Oct	Nov	Dec
# BMI	60	56	56	58	58	57	55	58	57	59	58	55
# BMI > 30	17	15	14	15	14	15	14	17	17	18	18	18
Pop. Mean	26	26	26	26	26	26	26	27	27	27	27	27
Std. Deviation	6.0	6.0	6.0	6.6	6.6	6.7	6.3	6.6	6.8	6.7	6.7	6.7
% BMI > 30	28%	27%	25%	26%	24%	26%	25%	29%	30%	31%	31%	33%

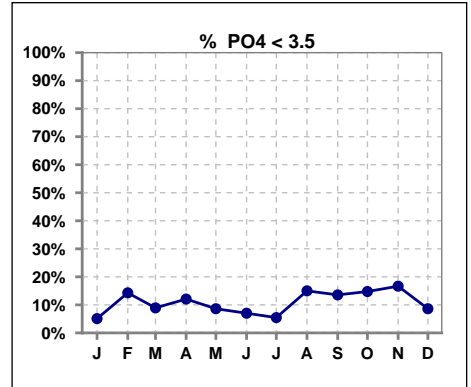


Methodology: a) All labs for 'Adequacy of Dialysis', 'Nutrition', 'Osteodystrophy', 'Anemia' and 'Diabetes' based on last value of month; b) BP's and #L processed are average of all values for month; c) Access data takes last access of month; d) Values for SGA and 'Infection Control' use most recent result.

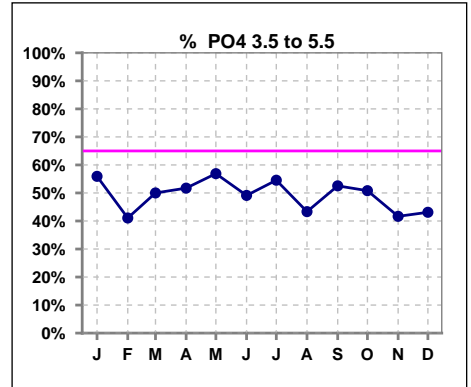
Lab methodology for PTH changed January 2012

III. OSTEODYSTROPHY

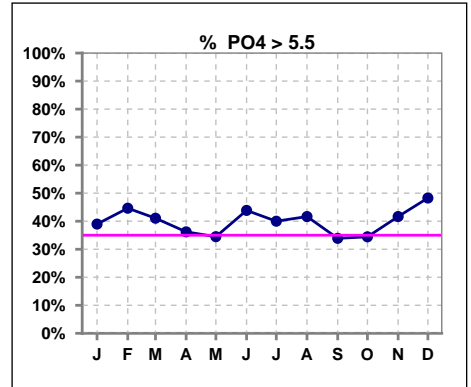
	Jan	Feb	Mar	Apr	May	Jun	Jul	Aug	Sep	Oct	Nov	Dec
# PO4	59	56	56	58	58	57	55	60	59	61	60	58
# PO4 < 3.5	3	8	5	7	5	4	3	9	8	9	10	5
Pop. Mean	5.4	5.3	5.4	5.2	5.2	5.4	5.5	5.5	5.2	5.3	5.4	5.6
Std. Deviation	1.76	1.79	1.53	1.53	1.66	1.93	1.72	2.06	1.86	1.66	2.05	1.64
% PO4 < 3.5	5%	14%	9%	12%	9%	7%	5%	15%	14%	15%	17%	9%



	Jan	Feb	Mar	Apr	May	Jun	Jul	Aug	Sep	Oct	Nov	Dec
# PO4	59	56	56	58	58	57	55	60	59	61	60	58
# PO4 3.5 to 5.5	33	23	28	30	33	28	30	26	31	31	25	25
Pop. Mean	5.4	5.3	5.4	5.2	5.2	5.4	5.5	5.5	5.2	5.3	5.4	5.6
Std. Deviation	1.76	1.79	1.53	1.53	1.66	1.93	1.72	2.06	1.86	1.66	2.05	1.64
% PO4 3.5 to 5.5	56%	41%	50%	52%	57%	49%	55%	43%	53%	51%	42%	43%



	Jan	Feb	Mar	Apr	May	Jun	Jul	Aug	Sep	Oct	Nov	Dec
# PO4	59	56	56	58	58	57	55	60	59	61	60	58
# PO4 > 5.5	23	25	23	21	20	25	22	25	20	21	25	28
Pop. Mean	5.4	5.3	5.4	5.2	5.2	5.4	5.5	5.5	5.2	5.3	5.4	5.6
Std. Deviation	1.76	1.79	1.53	1.53	1.66	1.93	1.72	2.06	1.86	1.66	2.05	1.64
% PO4 > 5.5	39%	45%	41%	36%	34%	44%	40%	42%	34%	34%	42%	48%

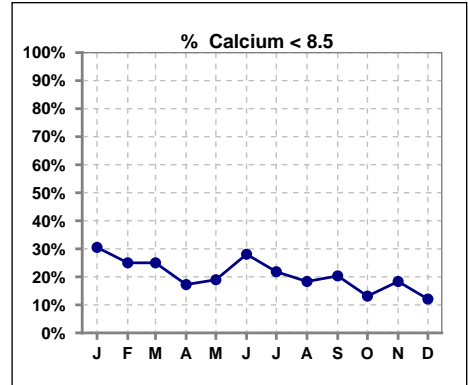


Methodology: a) All labs for 'Adequacy of Dialysis', 'Nutrition', 'Osteodystrophy', 'Anemia' and 'Diabetes' based on last value of month; b) BP's and #L processed are average of all values for month; c) Access data takes last access of month; d) Values for SGA and 'Infection Control' use most recent result.

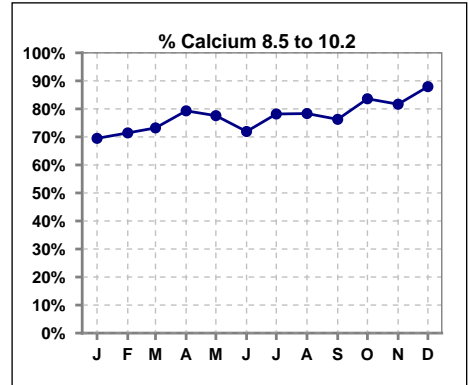
Lab methodology for PTH changed January 2012

III. OSTEODYSTROPHY - CONT.

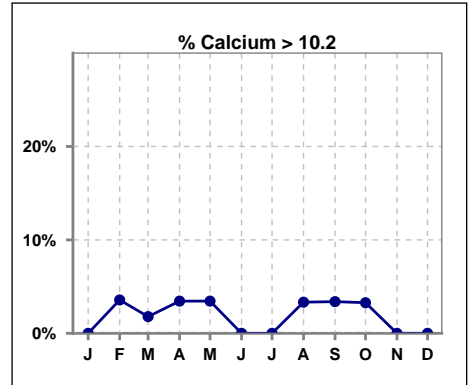
	Jan	Feb	Mar	Apr	May	Jun	Jul	Aug	Sep	Oct	Nov	Dec
# Calcium	59	56	56	58	58	57	55	60	59	61	60	58
# Calcium < 8.5	18	14	14	10	11	16	12	11	12	8	11	7
Pop. Mean	8.9	9.0	9.1	9.1	9.0	8.9	9.0	9.0	9.1	9.1	9.1	9.2
Std. Deviation	0.74	0.74	0.72	0.78	0.85	0.82	0.73	0.72	0.75	0.73	0.72	0.66
% Calcium < 8.5	31%	25%	25%	17%	19%	28%	22%	18%	20%	13%	18%	12%



	Jan	Feb	Mar	Apr	May	Jun	Jul	Aug	Sep	Oct	Nov	Dec
# Calcium	59	56	56	58	58	57	55	60	59	61	60	58
# Calcium 8.5 to 10.2	41	40	41	46	45	41	43	47	45	51	49	51
Pop. Mean	8.9	9.0	9.1	9.1	9.0	8.9	9.0	9.0	9.1	9.1	9.1	9.2
Std. Deviation	0.74	0.74	0.72	0.78	0.85	0.82	0.73	0.72	0.75	0.73	0.72	0.66
% Calcium 8.5 to 10.2	69%	71%	73%	79%	78%	72%	78%	78%	76%	84%	82%	88%



	Jan	Feb	Mar	Apr	May	Jun	Jul	Aug	Sep	Oct	Nov	Dec
# Calcium	59	56	56	58	58	57	55	60	59	61	60	58
# Calcium > 10.2	0	2	1	2	2	0	0	2	2	2	0	0
Pop. Mean	8.9	9.0	9.1	9.1	9.0	8.9	9.0	9.0	9.1	9.1	9.1	9.2
Std. Deviation	0.74	0.74	0.72	0.78	0.85	0.82	0.73	0.72	0.75	0.73	0.72	0.66
% Calcium > 10.2	0%	4%	2%	3%	3%	0%	0%	3%	3%	3%	0%	0%

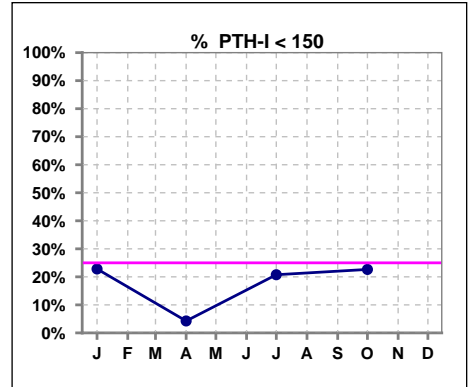


Methodology: a) All labs for 'Adequacy of Dialysis', 'Nutrition', 'Osteodystrophy', 'Anemia' and 'Diabetes' based on last value of month; b) BP's and #L processed are average of all values for month; c) Access data takes last access of month; d) Values for SGA and 'Infection Control' use most recent result.

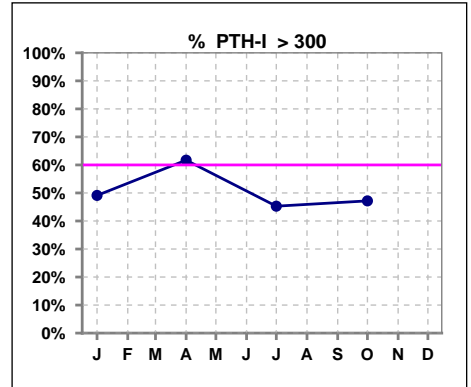
Lab methodology for PTH changed January 2012

III. OSTEODYSTROPHY - CONT.

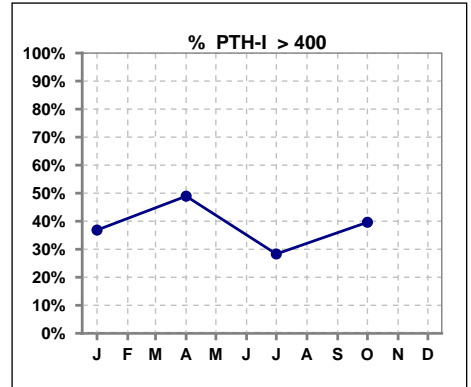
	Jan	Feb	Mar	Apr	May	Jun	Jul	Aug	Sep	Oct	Nov	Dec
# PTH-I	57			47			53			53		
# PTH-I < 150	13			2			11			12		
Pop. Mean	354			436			339			342		
Std. Deviation	272			238			267			254		
% PTH-I < 150	23%			4%			21%			23%		



	Jan	Feb	Mar	Apr	May	Jun	Jul	Aug	Sep	Oct	Nov	Dec
# PTH-I	57			47			53			53		
# PTH-I > 300	28			29			24			25		
Pop. Mean	354			436			339			342		
Std. Deviation	272			238			267			254		
% PTH-I > 300	49%			62%			45%			47%		



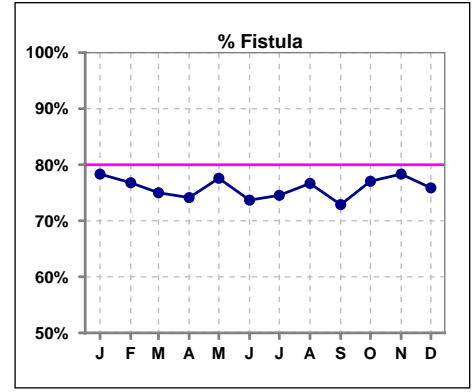
	Jan	Feb	Mar	Apr	May	Jun	Jul	Aug	Sep	Oct	Nov	Dec
# PTH-I	57			47			53			53		
# PTH-I > 400	21			23			15			21		
Pop. Mean	354			436			339			342		
Std. Deviation	272			238			267			254		
% PTH-I > 400	37%			49%			28%			40%		



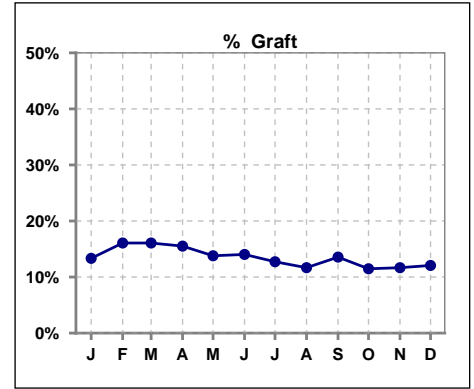
Methodology: a) All labs for 'Adequacy of Dialysis', 'Nutrition', 'Osteodystrophy', 'Anemia' and 'Diabetes' based on last value of month; b) BP's and #L processed are average of all values for month; c) Access data takes last access of month; d) Values for SGA and 'Infection Control' use most recent result.

IV. ACCESS

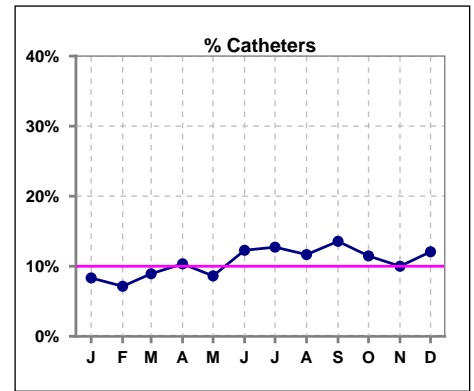
	Jan	Feb	Mar	Apr	May	Jun	Jul	Aug	Sep	Oct	Nov	Dec
# Access	60	56	56	58	58	57	55	60	59	61	60	58
# Fistula	47	43	42	43	45	42	41	46	43	47	47	44
% Fistula	78%	77%	75%	74%	78%	74%	75%	77%	73%	77%	78%	76%



	Jan	Feb	Mar	Apr	May	Jun	Jul	Aug	Sep	Oct	Nov	Dec
# Access	60	56	56	58	58	57	55	60	59	61	60	58
# Graft	8	9	9	9	8	8	7	7	8	7	7	7
% Graft	13%	16%	16%	16%	14%	14%	13%	12%	14%	11%	12%	12%



	Jan	Feb	Mar	Apr	May	Jun	Jul	Aug	Sep	Oct	Nov	Dec
# Access	60	56	56	58	58	57	55	60	59	61	60	58
# Catheters	5	4	5	6	5	7	7	7	8	7	6	7
% Catheters	8%	7%	9%	10%	9%	12%	13%	12%	14%	11%	10%	12%

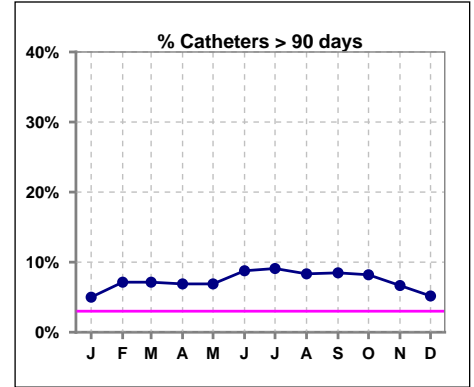


IV. ACCESS - CONT.

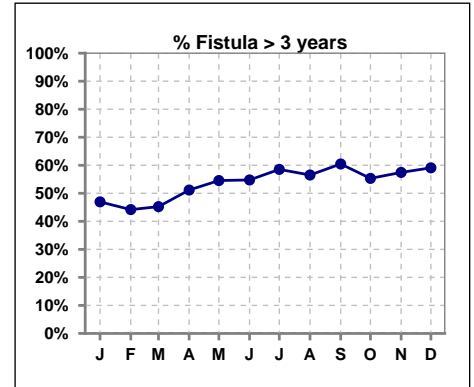
Catheters > 90 days

	Jan	Feb	Mar	Apr	May	Jun	Jul	Aug	Sep	Oct	Nov	Dec
# Access	60	56	56	58	58	57	55	60	59	61	60	58
# Catheters	3	4	4	4	4	5	5	5	5	5	4	3
% Catheters	5%	7%	7%	7%	7%	9%	9%	8%	8%	8%	7%	5%

Definition: Catheter in use on last treatment of the month



	Jan	Feb	Mar	Apr	May	Jun	Jul	Aug	Sep	Oct	Nov	Dec
# Fistula	49	43	42	43	44	42	41	46	43	47	47	44
# Fistula > 3 yrs	23	19	19	22	24	23	24	26	26	26	27	26
% Fistula > 3 yrs	47%	44%	45%	51%	55%	55%	59%	57%	60%	55%	57%	59%



All rates are calculated per 100 patient-month

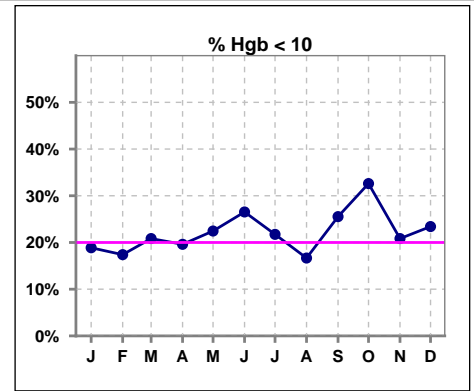
(number of infections/number of accesses x100)

LWKC	Total Fistula	Fistula Infected	Fistula ARB Rate	National Rate	Total Grafts	Graft Infected	Graft ARB Rate	National Rate	Total Cath	Cath Infected	Cath ARB Rate	National Rate	Total Accesses	Total Access Infected	All ARB Rate Per 100 pt- Months	National Rate
2014-2015																
Month																
Dec	49	0	0.00	0.23	8	0	0.00	0.51	4	0	0.00	2.55	61	0	0.00	
Jan	47	0	0.00	0.23	8	0	0.00	0.51	3	0	0.00	2.55	58	0	0.00	
Feb	45	0	0.00	0.23	9	0	0.00	0.51	4	0	0.00	2.55	58	0	0.00	
Mar	43	0	0.00	0.23	9	0	0.00	0.51	4	0	0.00	2.55	56	0	0.00	
April	43	0	0.00	0.23	9	0	0.00	0.51	4	0	0.00	2.55	56	0	0.00	
May	46	0	0.00	0.23	9	0	0.00	0.51	10	0	0.00	2.55	65	0	0.00	
June	44	0	0.00	0.23	8	0	0.00	0.51	5	0	0.00	2.55	57	0	0.00	
July	42	0	0.00	0.23	8	0	0.00	0.51	6	0	0.00	2.55	56	0	0.00	
Aug	43	0	0.00	0.23	8	0	0.00	0.51	5	0	0.00	2.55	56	0	0.00	
Sept	44	0	0.00	0.23	8	0	0.00	0.51	6	1	16.67	2.55	58	1	1.72	
Oct	45	0	0.00	0.23	8	0	0.00	0.51	6	0	0.00	2.55	59	0	0.00	
Nov	47	0	0.00	0.23	7	0	0.00	0.51	6	0	0.00	2.55	60	0	0.00	
Annual Total:	402	0	0.00	0.23	76	0	0.00	0.51	45	1	2.22	2.55	523	1	0.19	0.88

V. ANEMIA

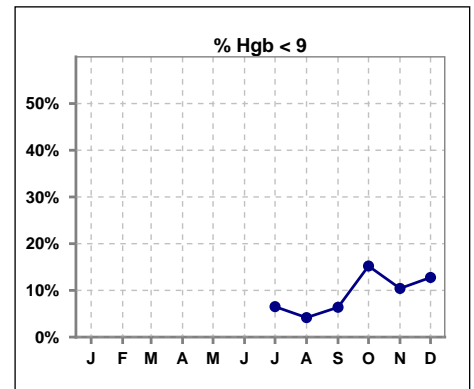
	Jan	Feb	Mar	Apr	May	Jun	Jul	Aug	Sep	Oct	Nov	Dec
# Hgb	53	46	48	51	49	49	46	48	47	46	48	47
# Hgb < 10	10	8	10	10	11	13	10	8	12	15	10	11
Pop. Mean	10.7	10.7	10.5	10.7	10.6	10.4	10.7	10.6	10.5	10.3	10.6	10.4
Std. Deviation	1.2	1.0	0.8	1.2	1.1	0.9	1.0	0.9	1.0	1.2	1.2	1.2
% Hgb < 10	19%	17%	21%	20%	22%	27%	22%	17%	26%	33%	21%	23%

Note: Excludes patients who received no ESA in month.



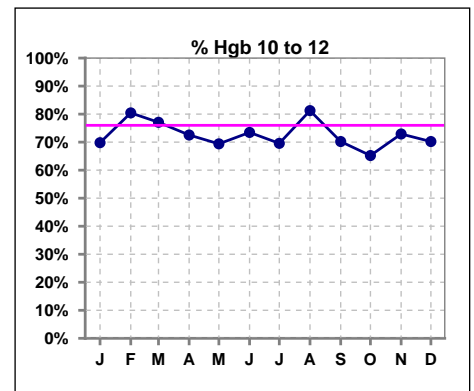
	Jan	Feb	Mar	Apr	May	Jun	Jul	Aug	Sep	Oct	Nov	Dec
# Hgb							46	48	47	46	48	47
# Hgb < 9							3	2	3	7	5	6
Pop. Mean							10.7	10.6	10.5	10.3	10.6	10.4
Std. Deviation							1.0	0.9	1.0	1.2	1.2	1.2
% Hgb < 9							7%	4%	6%	15%	10%	13%

Note: Excludes patients who received no ESA in month.



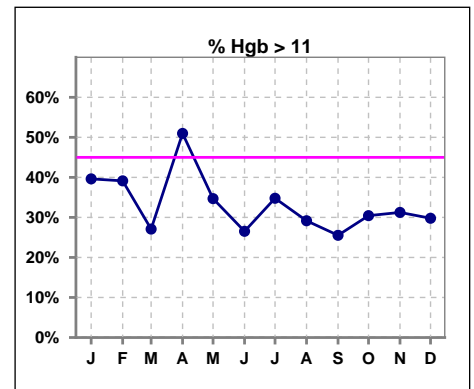
	Jan	Feb	Mar	Apr	May	Jun	Jul	Aug	Sep	Oct	Nov	Dec
# Hgb	53	46	48	51	49	49	46	48	47	46	48	47
# Hgb 10 to 12	37	37	37	37	34	36	32	39	33	30	35	33
Pop. Mean	10.7	10.7	10.5	10.7	10.6	10.4	10.7	10.6	10.5	10.3	10.6	10.4
Std. Deviation	1.2	1.0	0.8	1.2	1.1	0.9	1.0	0.9	1.0	1.2	1.2	1.2
% Hgb 10 to 12	70%	80%	77%	73%	69%	73%	70%	81%	70%	65%	73%	70%

Note: Excludes patients who received no ESA in month.



	Jan	Feb	Mar	Apr	May	Jun	Jul	Aug	Sep	Oct	Nov	Dec
# Hgb	53	46	48	51	49	49	46	48	47	46	48	47
# Hgb > 11	21	18	13	26	17	13	16	14	12	14	15	14
Pop. Mean	10.7	10.7	10.5	10.7	10.6	10.4	10.7	10.6	10.5	10.3	10.6	10.4
Std. Deviation	1.2	1.0	0.8	1.2	1.1	0.9	1.0	0.9	1.0	1.2	1.2	1.2
% Hgb > 11	40%	39%	27%	51%	35%	27%	35%	29%	26%	30%	31%	30%

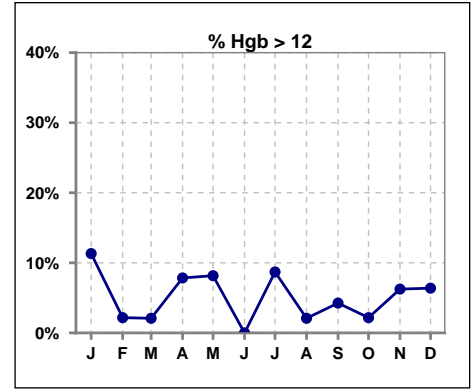
Note: Excludes patients who received no ESA in month.



V. ANEMIA - CONT.

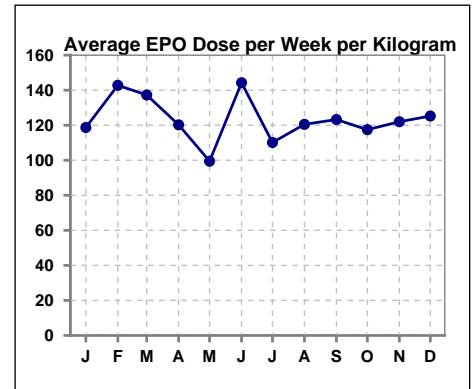
	Jan	Feb	Mar	Apr	May	Jun	Jul	Aug	Sep	Oct	Nov	Dec
# Hgb	53	46	48	51	49	49	46	48	47	46	48	47
# Hgb > 12	6	1	1	4	4	0	4	1	2	1	3	3
Pop. Mean	10.7	10.7	10.5	10.7	10.6	10.4	10.7	10.6	10.5	10.3	10.6	10.4
Std. Deviation	1.2	1.0	0.8	1.2	1.1	0.9	1.0	0.9	1.0	1.2	1.2	1.2
% Hgb > 12	11%	2%	2%	8%	8%	0%	9%	2%	4%	2%	6%	6%

Note: Excludes patients who received no ESA in month.



Average EPO Dose per Week per Kilogram

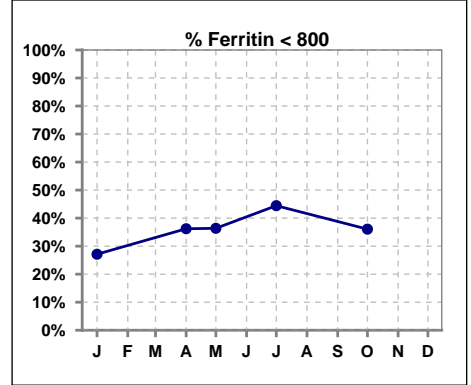
	Jan	Feb	Mar	Apr	May	Jun	Jul	Aug	Sep	Oct	Nov	Dec
# Average EPO	118.7	142.8	137.3	120.2	99.5	144.3	110.1	120.5	123.3	117.5	122.0	125.3



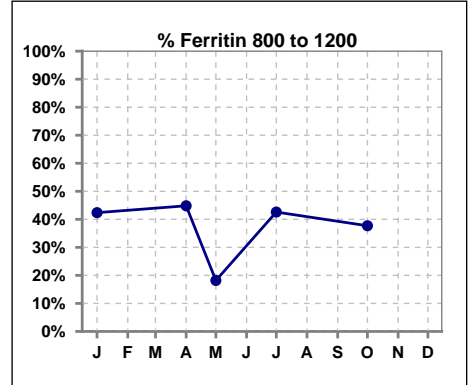
V. ANEMIA - CONT.

Iron Profile

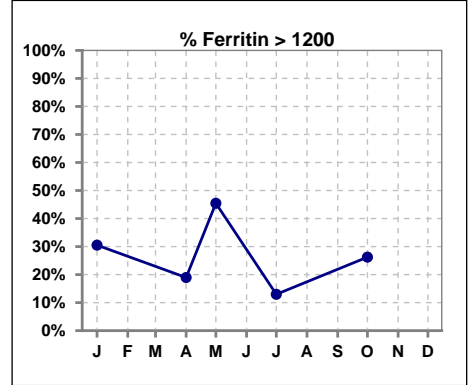
	Jan	Feb	Mar	Apr	May	Jun	Jul	Aug	Sep	Oct	Nov	Dec
# Ferritin	59			58	11		54			61		
# Ferritin < 800	16			21	4		24			22		
Pop. Mean	992			926	1023		859			971		
Std. Deviation	428			347	341		410			406		
% Ferritin < 800	27%			36%	36%		44%			36%		



	Jan	Feb	Mar	Apr	May	Jun	Jul	Aug	Sep	Oct	Nov	Dec
# Ferritin	59			58	11		54			61		
# Ferritin 800 to 1200	25			26	2		23			23		
Pop. Mean	992			926	1023		859			971		
Std. Deviation	428			347	341		410			406		
% Ferritin 800 to 1200	42%			45%	18%		43%			38%		

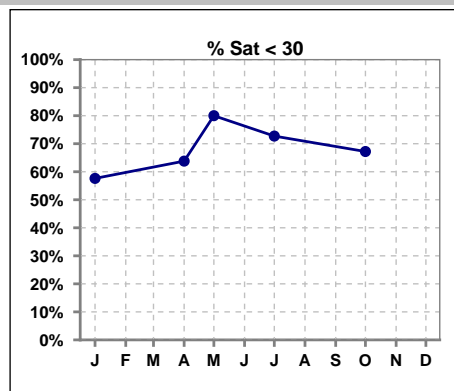


	Jan	Feb	Mar	Apr	May	Jun	Jul	Aug	Sep	Oct	Nov	Dec
# Ferritin	59			58	11		54			61		
# Ferritin > 1200	18			11	5		7			16		
Pop. Mean	992			926	1023		859			971		
Std. Deviation	428			347	341		410			406		
% Ferritin > 1200	31%			19%	45%		13%			26%		

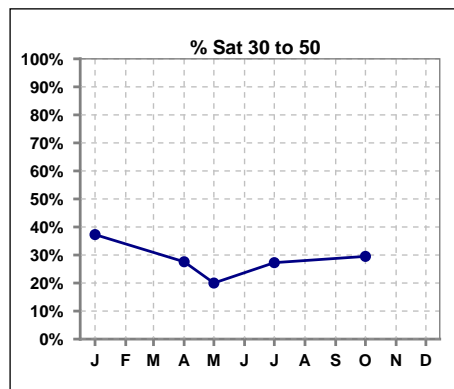


V. ANEMIA - CONT.

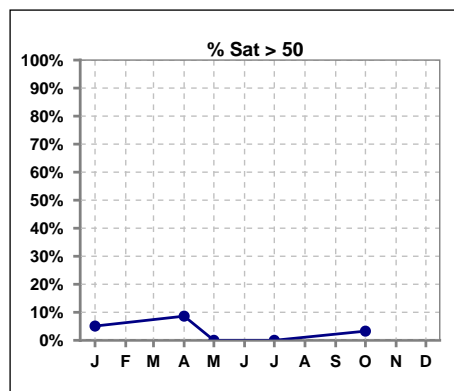
	Jan	Feb	Mar	Apr	May	Jun	Jul	Aug	Sep	Oct	Nov	Dec
# % Sat	59			58	10		55			61		
# % Sat < 30	34			37	8		40			41		
Pop. Mean	29			29	24		26			27		
Std. Deviation	13			14	10		8			11		
% % Sat < 30	58%			64%	80%		73%			67%		



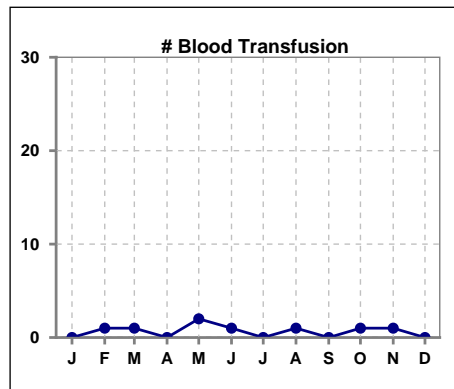
	Jan	Feb	Mar	Apr	May	Jun	Jul	Aug	Sep	Oct	Nov	Dec
# % Sat	59			58	10		55			61		
# % Sat 30 to 50	22			16	2		15			18		
Pop. Mean	29			29	24		26			27		
Std. Deviation	13			14	10		8			11		
% % Sat 30 to 50	37%			28%	20%		27%			30%		



	Jan	Feb	Mar	Apr	May	Jun	Jul	Aug	Sep	Oct	Nov	Dec
# % Sat	59			58	10		55			61		
# % Sat > 50	3			5	0		0			2		
Pop. Mean	29			29	24		26			27		
Std. Deviation	13			14	10		8			11		
% % Sat > 50	5%			9%	0%		0%			3%		



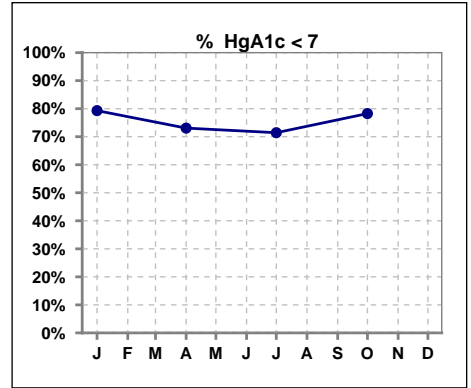
	Jan	Feb	Mar	Apr	May	Jun	Jul	Aug	Sep	Oct	Nov	Dec
# Patient	60	56	56	58	58	57	55	60	60	61	60	59
# Blood Transfusion	0	1	1	0	2	1	0	1	0	1	1	0



Methodology: a) All labs for 'Adequacy of Dialysis', 'Nutrition', 'Osteodystrophy', 'Anemia' and 'Diabetes' based on last value of month; b) BP's and #L processed are average of all values for month; c) Access data takes last access of month; d) Values for SGA and 'Infection Control' use most recent result.

VI. Diabetes

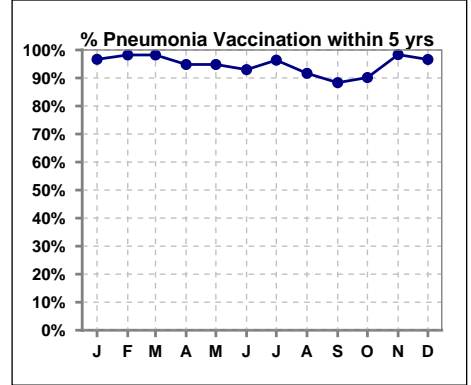
	Jan	Feb	Mar	Apr	May	Jun	Jul	Aug	Sep	Oct	Nov	Dec
# HgA1c	29			26			21			23		
# HgA1c < 7	23			19			15			18		
Pop. Mean	6.3			6.3			6.5			6.4		
Std. Deviation	1.21			1.16			1.22			0.78		
% HgA1c < 7	79%			73%			71%			78%		



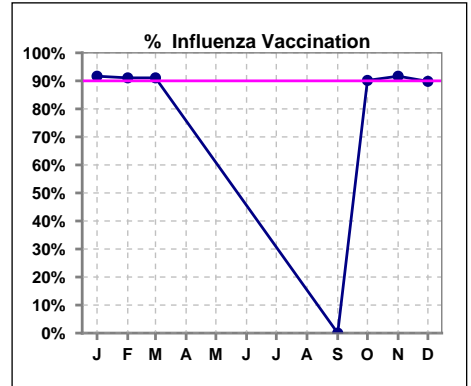
VII. Infection Control

Pneumonia vaccination within the past five years

	Jan	Feb	Mar	Apr	May	Jun	Jul	Aug	Sep	Oct	Nov	Dec
# Patient	60	56	56	58	58	57	55	60	60	61	60	59
# Pneumonia	58	55	55	55	55	53	53	55	53	55	59	57
% Pneumonia	97%	98%	98%	95%	95%	93%	96%	92%	88%	90%	98%	97%



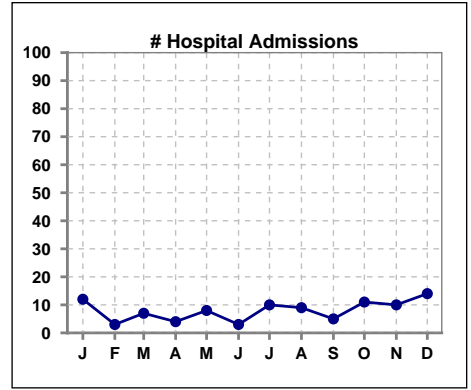
	Jan	Feb	Mar	Apr	May	Jun	Jul	Aug	Sep	Oct	Nov	Dec
# Patient	60	56	56						60	61	60	59
# Influenza	55	51	51						0	55	55	53
% Influenza	92%	91%	91%						0%	90%	92%	90%



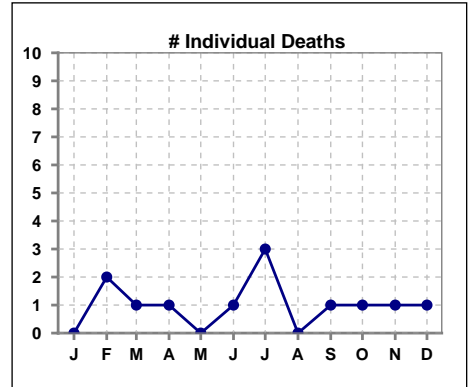
Methodology: a) All labs for 'Adequacy of Dialysis', 'Nutrition', 'Osteodystrophy', 'Anemia' and 'Diabetes' based on last value of month; b) BP's and #L processed are average of all values for month; c) Access data takes last access of month; d) Values for SGA and 'Infection Control' use most recent result.

VIII. Outcome measures

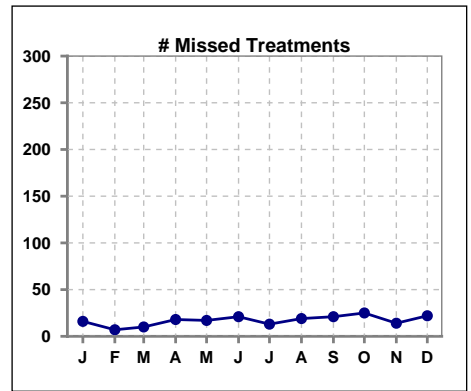
	Jan	Feb	Mar	Apr	May	Jun	Jul	Aug	Sep	Oct	Nov	Dec
# Patient	60	56	56	58	58	57	55	60	60	61	60	59
# Hospital Admissions	12	3	7	4	8	3	10	9	5	11	10	14



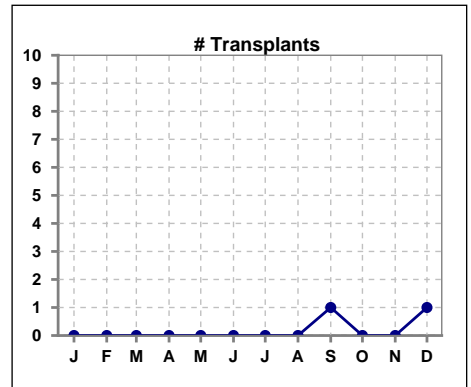
	Jan	Feb	Mar	Apr	May	Jun	Jul	Aug	Sep	Oct	Nov	Dec
# Patient	60	56	56	58	58	57	55	60	60	61	60	59
# Individual Deaths	0	2	1	1	0	1	3	0	1	1	1	1



	Jan	Feb	Mar	Apr	May	Jun	Jul	Aug	Sep	Oct	Nov	Dec
# Patient	60	56	56	58	58	57	55	60	60	61	60	59
# Missed Treatments	16	7	10	18	17	21	13	19	21	25	14	22



	Jan	Feb	Mar	Apr	May	Jun	Jul	Aug	Sep	Oct	Nov	Dec
# Patient	60	56	56	58	58	57	55	60	60	61	60	59
# Transplants	0	0	0	0	0	0	0	0	1	0	0	1



Methodology: a) All labs for 'Adequacy of Dialysis', 'Nutrition', 'Osteodystrophy', 'Anemia' and 'Diabetes' based on last value of month; b) BP's and #L processed are average of all values for month; c) Access data takes last access of month; d) Values for SGA and 'Infection Control' use most recent result.