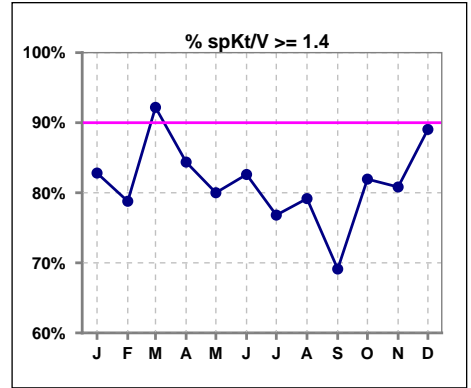
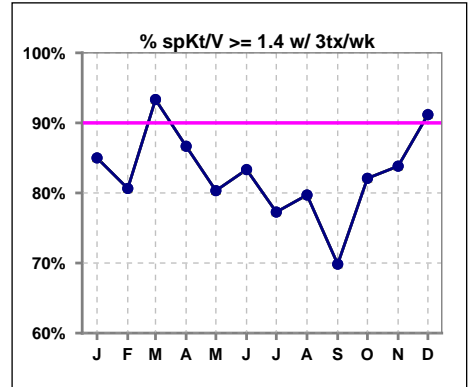


**I. ADEQUACY OF DIALYSIS**

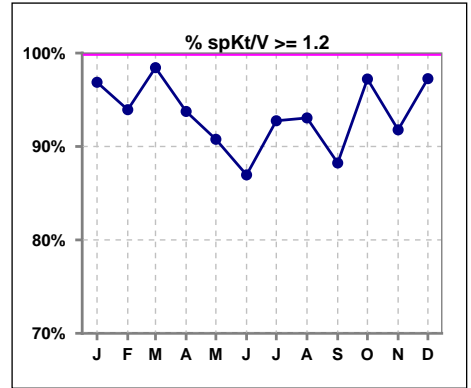
	Jan	Feb	Mar	Apr	May	Jun	Jul	Aug	Sep	Oct	Nov	Dec
# spKt/V	64	66	64	64	65	69	69	72	68	72	73	73
# spKt/V >= 1.4	53	52	59	54	52	57	53	57	47	59	59	65
Pop. Mean	1.67	1.66	1.74	1.67	1.63	1.62	1.60	1.62	1.57	1.64	1.65	1.66
Std. Deviation	0.32	0.35	0.30	0.33	0.35	0.35	0.35	0.35	0.38	0.29	0.35	0.29
% spKt/V >= 1.4	83%	79%	92%	84%	80%	83%	77%	79%	69%	82%	81%	89%



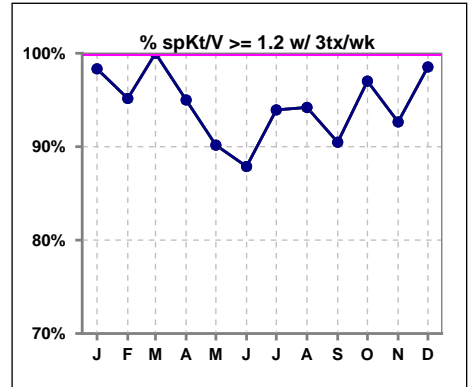
	Jan	Feb	Mar	Apr	May	Jun	Jul	Aug	Sep	Oct	Nov	Dec
# spKt/V w/ 3tx/wk	60	62	60	60	61	66	66	69	63	67	68	68
# spKt/V >= 1.4 w/3tx/wk	51	50	56	52	49	55	51	55	44	55	57	62
Pop. Mean	1.69	1.68	1.75	1.68	1.64	1.62	1.61	1.62	1.58	1.64	1.67	1.67
Std. Deviation	0.31	0.35	0.30	0.32	0.35	0.35	0.35	0.35	0.38	0.30	0.34	0.29
% >= 1.4 w/3tx/wk	85%	81%	93%	87%	80%	83%	77%	80%	70%	82%	84%	91%



	Jan	Feb	Mar	Apr	May	Jun	Jul	Aug	Sep	Oct	Nov	Dec
# spKt/V	64	66	64	64	65	69	69	72	68	72	73	73
# spKt/V >= 1.2	62	62	63	60	59	60	64	67	60	70	67	71
Pop. Mean	1.67	1.66	1.74	1.67	1.63	1.62	1.60	1.62	1.57	1.64	1.65	1.66
Std. Deviation	0.32	0.35	0.30	0.33	0.35	0.35	0.35	0.35	0.38	0.29	0.35	0.29
% spKt/V >= 1.2	97%	94%	98%	94%	91%	87%	93%	93%	88%	97%	92%	97%



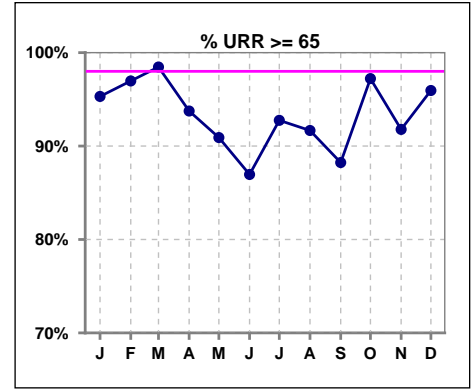
	Jan	Feb	Mar	Apr	May	Jun	Jul	Aug	Sep	Oct	Nov	Dec
# spKt/V w/ 3tx/wk	60	62	60	60	61	66	66	69	63	67	68	68
# spKt/V >= 1.2 w/3tx/wk	59	59	60	57	55	58	62	65	57	65	63	67
Pop. Mean	1.69	1.68	1.75	1.68	1.64	1.62	1.61	1.62	1.58	1.64	1.67	1.67
Std. Deviation	0.31	0.35	0.30	0.32	0.35	0.35	0.35	0.35	0.38	0.30	0.34	0.29
% >= 1.2 w/3tx/wk	98%	95%	100%	95%	90%	88%	94%	94%	90%	97%	93%	99%



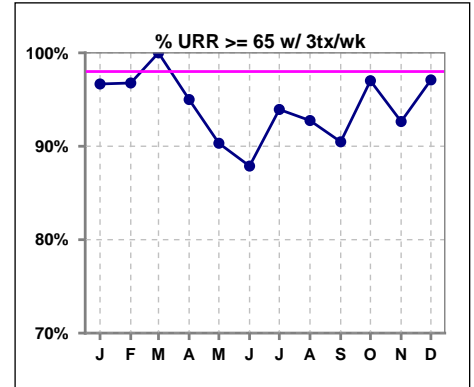
Methodology: a) All labs for 'Adequacy of Dialysis', 'Nutrition', 'Osteodystrophy', 'Anemia' and 'Diabetes' based on last value of month; b) BP's and #L processed are average of all values for month; c) Access data takes last access of month; d) Values for SGA and 'Infection Control' use most recent result.

**I. ADEQUACY OF DIALYSIS - CONT.**

	Jan	Feb	Mar	Apr	May	Jun	Jul	Aug	Sep	Oct	Nov	Dec
# URR	64	66	65	64	66	69	69	72	68	72	73	74
# URR >= 65	61	64	64	60	60	60	64	66	60	70	67	71
Pop. Mean	76	75	78	76	75	75	74	74	73	75	75	76
Std. Deviation	6.35	6.99	5.22	6.18	7.35	7.21	7.33	7.97	7.50	5.48	6.63	5.77
% URR >= 65	95%	97%	98%	94%	91%	87%	93%	92%	88%	97%	92%	96%



	Jan	Feb	Mar	Apr	May	Jun	Jul	Aug	Sep	Oct	Nov	Dec
# URR w/ 3tx/wk	60	62	61	60	62	66	66	69	63	67	68	69
# URR>=65 w/ 3tx/wk	58	60	61	57	56	58	62	64	57	65	63	67
Pop. Mean	76	76	78	76	75	75	74	75	73	75	75	76
Std. Deviation	5.80	7.03	5.04	5.86	7.46	7.12	7.32	7.92	7.43	5.60	6.25	5.50
% URR>=65 w/ 3tx/wk	97%	97%	100%	95%	90%	88%	94%	93%	90%	97%	93%	97%

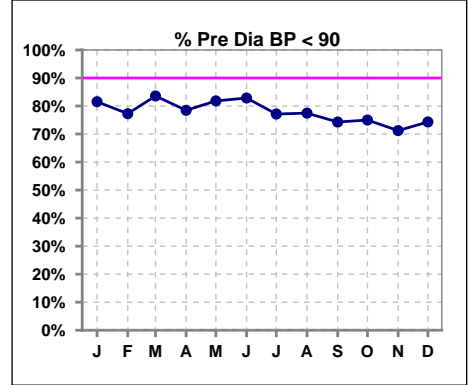


Methodology: a) All labs for 'Adequacy of Dialysis', 'Nutrition', 'Osteodystrophy', 'Anemia' and 'Diabetes' based on last value of month; b) BP's and #L processed are average of all values for month; c) Access data takes last access of month; d) Values for SGA and 'Infection Control' use most recent result.

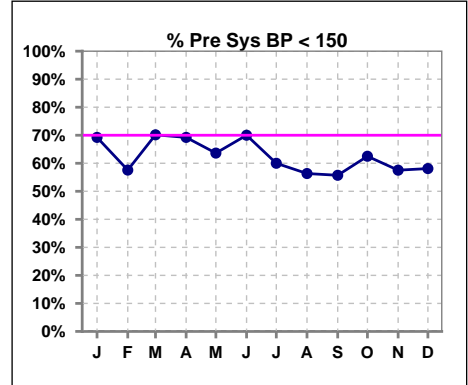
**I. ADEQUACY OF DIALYSIS - CONT.**

**Blood Pressure Control (Pre)**

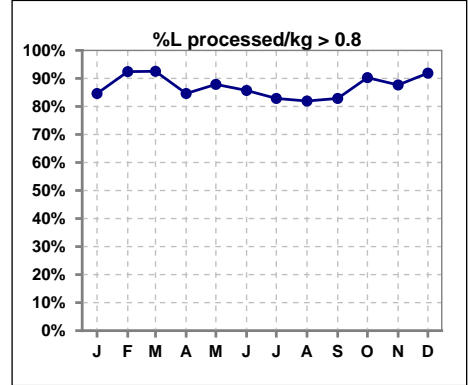
	Jan	Feb	Mar	Apr	May	Jun	Jul	Aug	Sep	Oct	Nov	Dec
# Pre Dia BP	65	66	67	65	66	70	70	71	70	72	73	74
# Pre Dia BP < 90	53	51	56	51	54	58	54	55	52	54	52	55
Pop. Mean	78	78	77	78	76	77	77	79	79	78	79	79
Std. Deviation	13.6	14.0	13.2	13.2	13.6	13.2	15.0	15.1	14.8	14.5	14.2	14.1
<b>% Pre Dia BP &lt; 90</b>	<b>82%</b>	<b>77%</b>	<b>84%</b>	<b>78%</b>	<b>82%</b>	<b>83%</b>	<b>77%</b>	<b>77%</b>	<b>74%</b>	<b>75%</b>	<b>71%</b>	<b>74%</b>



	Jan	Feb	Mar	Apr	May	Jun	Jul	Aug	Sep	Oct	Nov	Dec
# Pre Sys BP	65	66	67	65	66	70	70	71	70	72	73	74
# Pre Sys BP < 150	45	38	47	45	42	49	42	40	39	45	42	43
Pop. Mean	141	142	140	140	141	141	142	145	145	143	144	144
Std. Deviation	22.3	25.0	23.2	21.0	23.5	22.5	26.3	25.0	23.5	24.8	23.4	23.4
<b>%Pre Sys BP &lt;150</b>	<b>69%</b>	<b>58%</b>	<b>70%</b>	<b>69%</b>	<b>64%</b>	<b>70%</b>	<b>60%</b>	<b>56%</b>	<b>56%</b>	<b>63%</b>	<b>58%</b>	<b>58%</b>



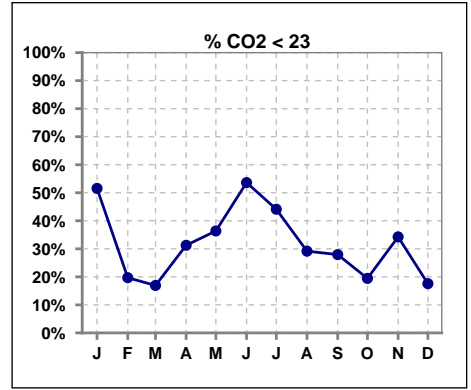
	Jan	Feb	Mar	Apr	May	Jun	Jul	Aug	Sep	Oct	Nov	Dec
# L processed/kg	65	66	67	65	66	70	70	72	70	72	73	74
# L processed/kg>0.8	55	61	62	55	58	60	58	59	58	65	64	68
Pop. Mean	1	1	1	1	1	1	1	1	1	1	1	1
Std. Deviation	0.3	0.3	0.3	0.3	0.3	0.3	0.3	0.3	0.3	0.3	0.3	0.3
<b>% L processed/kg&gt;0.8</b>	<b>85%</b>	<b>92%</b>	<b>93%</b>	<b>85%</b>	<b>88%</b>	<b>86%</b>	<b>83%</b>	<b>82%</b>	<b>83%</b>	<b>90%</b>	<b>88%</b>	<b>92%</b>



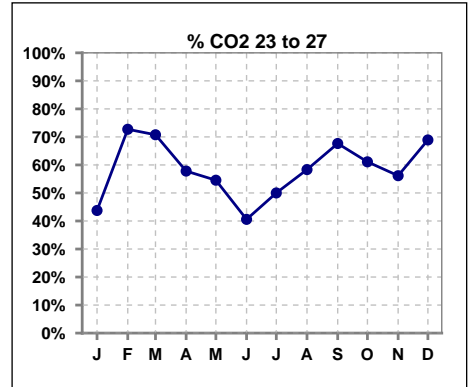
Methodology: a) All labs for 'Adequacy of Dialysis', 'Nutrition', 'Osteodystrophy', 'Anemia' and 'Diabetes' based on last value of month; b) BP's and #L processed are average of all values for month; c) Access data takes last access of month; d) Values for SGA and 'Infection Control' use most recent result.

**I. ADEQUACY OF DIALYSIS - CONT.**

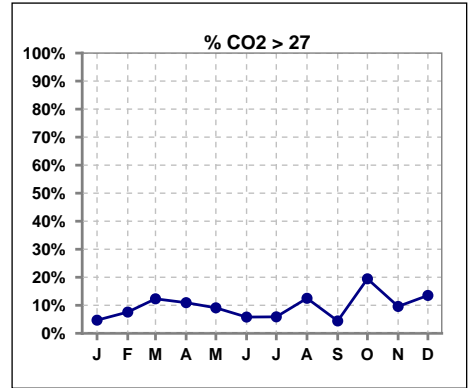
	Jan	Feb	Mar	Apr	May	Jun	Jul	Aug	Sep	Oct	Nov	Dec
# CO2	64	66	65	64	66	69	68	72	68	72	73	74
# CO2 < 23	33	13	11	20	24	37	30	21	19	14	25	13
Pop. Mean	23	24	25	23	23	23	23	24	24	25	24	25
Std. Deviation	2.68	2.24	2.64	3.56	2.82	2.86	2.85	2.96	2.57	2.88	2.75	2.70
% CO2 < 23	52%	20%	17%	31%	36%	54%	44%	29%	28%	19%	34%	18%



	Jan	Feb	Mar	Apr	May	Jun	Jul	Aug	Sep	Oct	Nov	Dec
# CO2	64	66	65	64	66	69	68	72	68	72	73	74
# CO2 23 to 27	28	48	46	37	36	28	34	42	46	44	41	51
Pop. Mean	23	24	25	23	23	23	23	24	24	25	24	25
Std. Deviation	2.68	2.24	2.64	3.56	2.82	2.86	2.85	2.96	2.57	2.88	2.75	2.70
% CO2 23 to 27	44%	73%	71%	58%	55%	41%	50%	58%	68%	61%	56%	69%



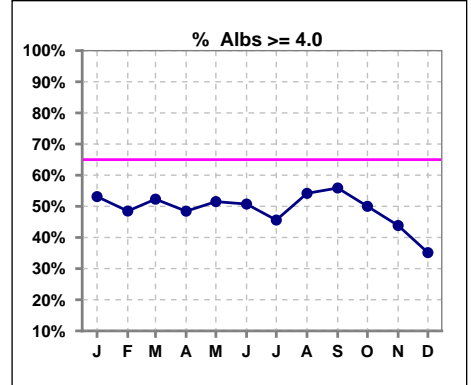
	Jan	Feb	Mar	Apr	May	Jun	Jul	Aug	Sep	Oct	Nov	Dec
# CO2	64	66	65	64	66	69	68	72	68	72	73	74
# CO2 > 27	3	5	8	7	6	4	4	9	3	14	7	10
Pop. Mean	23	24	25	23	23	23	23	24	24	25	24	25
Std. Deviation	2.68	2.24	2.64	3.56	2.82	2.86	2.85	2.96	2.57	2.88	2.75	2.70
% CO2 > 27	5%	8%	12%	11%	9%	6%	6%	13%	4%	19%	10%	14%



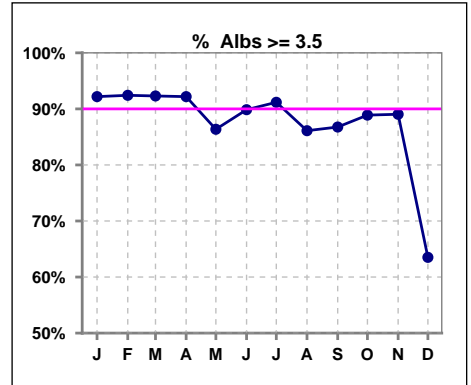
\*Albumin values use BCG method - as of July 2001

**II. NUTRITION**

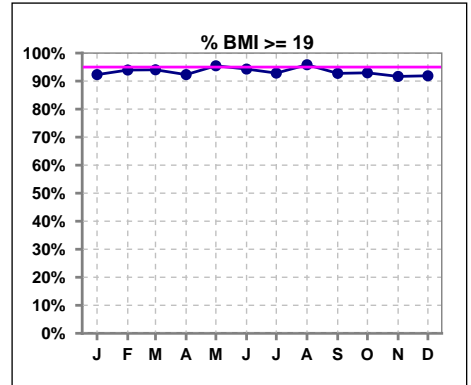
	Jan	Feb	Mar	Apr	May	Jun	Jul	Aug	Sep	Oct	Nov	Dec
# Albumin	64	66	65	64	66	69	68	72	68	72	73	74
# Albumin >= 4.0	34	32	34	31	34	35	31	39	38	36	32	26
Pop. Mean	3.9	3.9	3.9	3.9	3.9	3.9	3.9	3.9	3.9	3.8	3.8	3.6
Std. Deviation	0.35	0.35	0.37	0.37	0.41	0.36	0.32	0.43	0.45	0.50	0.41	0.56
% Alb >= 4.0	53%	48%	52%	48%	52%	51%	46%	54%	56%	50%	44%	35%



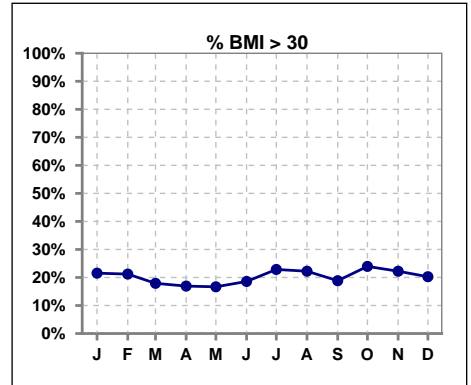
	Jan	Feb	Mar	Apr	May	Jun	Jul	Aug	Sep	Oct	Nov	Dec
# Albumin	64	66	65	64	66	69	68	72	68	72	73	74
# Albumin >= 3.5	59	61	60	59	57	62	62	62	59	64	65	47
Pop. Mean	3.9	3.9	3.9	3.9	3.9	3.9	3.9	3.9	3.9	3.8	3.8	3.6
Std. Deviation	0.35	0.35	0.37	0.37	0.41	0.36	0.32	0.43	0.45	0.50	0.41	0.56
% Alb >= 3.5	92%	92%	92%	92%	86%	90%	91%	86%	87%	89%	89%	64%



	Jan	Feb	Mar	Apr	May	Jun	Jul	Aug	Sep	Oct	Nov	Dec
# BMI	65	66	67	65	66	70	70	72	69	71	72	74
# BMI >= 19	60	62	63	60	63	66	65	69	64	66	66	68
Pop. Mean	26	26	26	26	26	26	27	27	26	27	27	26
Std. Deviation	5.7	5.8	5.6	5.5	5.4	5.6	5.7	6.0	5.8	5.8	5.7	5.7
% BMI >= 19	92%	94%	94%	92%	95%	94%	93%	96%	93%	93%	92%	92%



	Jan	Feb	Mar	Apr	May	Jun	Jul	Aug	Sep	Oct	Nov	Dec
# BMI	65	66	67	65	66	70	70	72	69	71	72	74
# BMI > 30	14	14	12	11	11	13	16	16	13	17	16	15
Pop. Mean	26	26	26	26	26	26	27	27	26	27	27	26
Std. Deviation	5.7	5.8	5.6	5.5	5.4	5.6	5.7	6.0	5.8	5.8	5.7	5.7
% BMI > 30	22%	21%	18%	17%	17%	19%	23%	22%	19%	24%	22%	20%

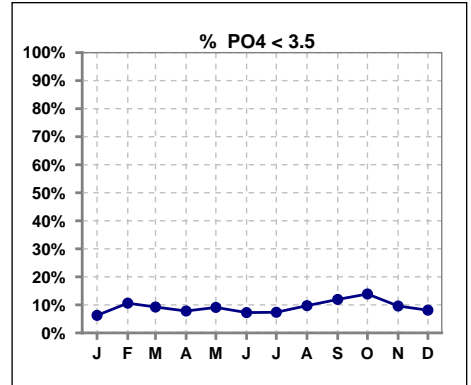


Methodology: a) All labs for 'Adequacy of Dialysis', 'Nutrition', 'Osteodystrophy', 'Anemia' and 'Diabetes' based on last value of month; b) BP's and #L processed are average of all values for month; c) Access data takes last access of month; d) Values for SGA and 'Infection Control' use most recent result.

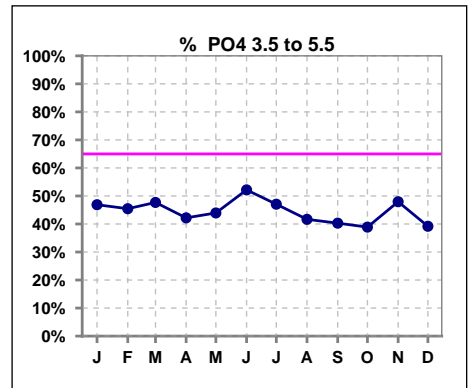
Lab methodology for PTH changed January 2012

**III. OSTEODYSTROPHY**

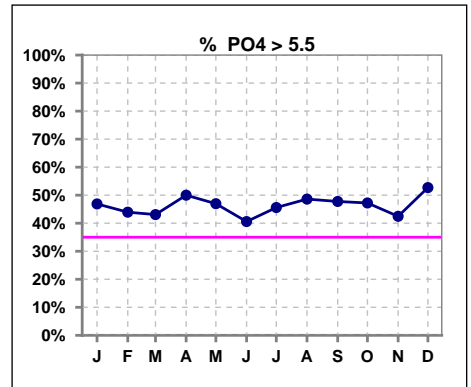
	Jan	Feb	Mar	Apr	May	Jun	Jul	Aug	Sep	Oct	Nov	Dec
# PO4	64	66	65	64	66	69	68	72	67	72	73	74
# PO4 < 3.5	4	7	6	5	6	5	5	7	8	10	7	6
Pop. Mean	5.5	5.4	5.4	5.7	5.5	5.5	5.9	5.7	5.5	5.4	5.5	5.9
Std. Deviation	1.51	1.60	1.68	1.86	1.61	1.64	2.01	2.02	1.79	1.63	1.78	1.83
% PO4 < 3.5	6%	11%	9%	8%	9%	7%	7%	10%	12%	14%	10%	8%



	Jan	Feb	Mar	Apr	May	Jun	Jul	Aug	Sep	Oct	Nov	Dec
# PO4	64	66	65	64	66	69	68	72	67	72	73	74
# PO4 3.5 to 5.5	30	30	31	27	29	36	32	30	27	28	35	29
Pop. Mean	5.5	5.4	5.4	5.7	5.5	5.5	5.9	5.7	5.5	5.4	5.5	5.9
Std. Deviation	1.51	1.60	1.68	1.86	1.61	1.64	2.01	2.02	1.79	1.63	1.78	1.83
% PO4 3.5 to 5.5	47%	45%	48%	42%	44%	52%	47%	42%	40%	39%	48%	39%



	Jan	Feb	Mar	Apr	May	Jun	Jul	Aug	Sep	Oct	Nov	Dec
# PO4	64	66	65	64	66	69	68	72	67	72	73	74
# PO4 > 5.5	30	29	28	32	31	28	31	35	32	34	31	39
Pop. Mean	5.5	5.4	5.4	5.7	5.5	5.5	5.9	5.7	5.5	5.4	5.5	5.9
Std. Deviation	1.51	1.60	1.68	1.86	1.61	1.64	2.01	2.02	1.79	1.63	1.78	1.83
% PO4 > 5.5	47%	44%	43%	50%	47%	41%	46%	49%	48%	47%	42%	53%

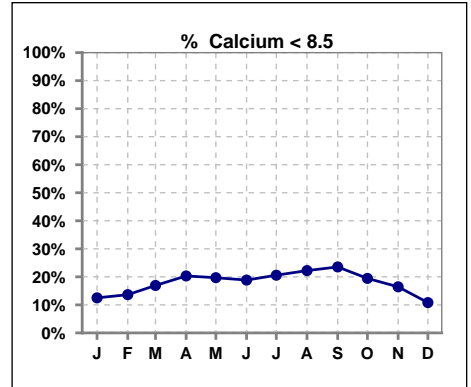


Methodology: a) All labs for 'Adequacy of Dialysis', 'Nutrition', 'Osteodystrophy', 'Anemia' and 'Diabetes' based on last value of month; b) BP's and #L processed are average of all values for month; c) Access data takes last access of month; d) Values for SGA and 'Infection Control' use most recent result.

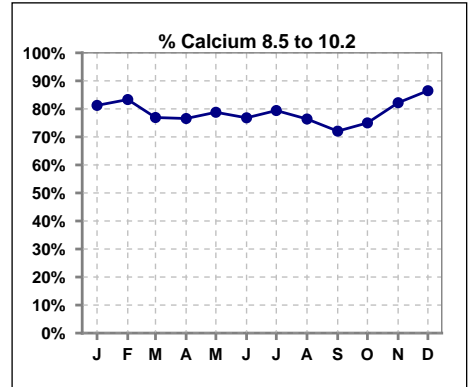
Lab methodology for PTH changed January 2012

**III. OSTEODYSTROPHY - CONT.**

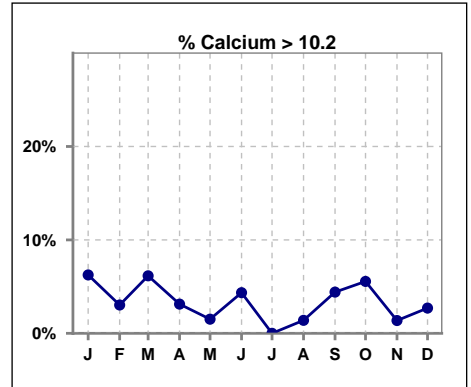
	Jan	Feb	Mar	Apr	May	Jun	Jul	Aug	Sep	Oct	Nov	Dec
# Calcium	64	66	65	64	66	69	68	72	68	72	73	74
# Calcium < 8.5	8	9	11	13	13	13	14	16	16	14	12	8
Pop. Mean	9.1	9.1	9.1	9.0	9.0	9.0	8.9	9.0	9.0	9.2	9.2	9.3
Std. Deviation	0.67	0.77	0.73	0.77	0.70	0.78	0.73	0.69	0.77	0.86	0.70	0.64
% Calcium < 8.5	13%	14%	17%	20%	20%	19%	21%	22%	24%	19%	16%	11%



	Jan	Feb	Mar	Apr	May	Jun	Jul	Aug	Sep	Oct	Nov	Dec
# Calcium	64	66	65	64	66	69	68	72	68	72	73	74
# Calcium 8.5 to 10.2	52	55	50	49	52	53	54	55	49	54	60	64
Pop. Mean	9.1	9.1	9.1	9.0	9.0	9.0	8.9	9.0	9.0	9.2	9.2	9.3
Std. Deviation	0.67	0.77	0.73	0.77	0.70	0.78	0.73	0.69	0.77	0.86	0.70	0.64
% Calcium 8.5 to 10.2	81%	83%	77%	77%	79%	77%	79%	76%	72%	75%	82%	86%



	Jan	Feb	Mar	Apr	May	Jun	Jul	Aug	Sep	Oct	Nov	Dec
# Calcium	64	66	65	64	66	69	68	72	68	72	73	74
# Calcium > 10.2	4	2	4	2	1	3	0	1	3	4	1	2
Pop. Mean	9.1	9.1	9.1	9.0	9.0	9.0	8.9	9.0	9.0	9.2	9.2	9.3
Std. Deviation	0.67	0.77	0.73	0.77	0.70	0.78	0.73	0.69	0.77	0.86	0.70	0.64
% Calcium > 10.2	6%	3%	6%	3%	2%	4%	0%	1%	4%	6%	1%	3%

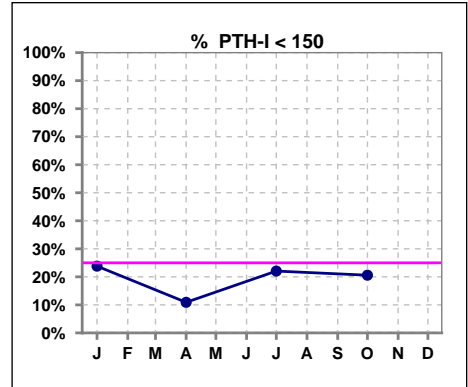


Methodology: a) All labs for 'Adequacy of Dialysis', 'Nutrition', 'Osteodystrophy', 'Anemia' and 'Diabetes' based on last value of month; b) BP's and #L processed are average of all values for month; c) Access data takes last access of month; d) Values for SGA and 'Infection Control' use most recent result.

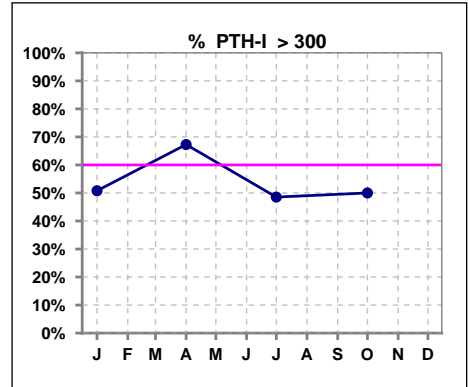
Lab methodology for PTH changed January 2012

**III. OSTEODYSTROPHY - CONT.**

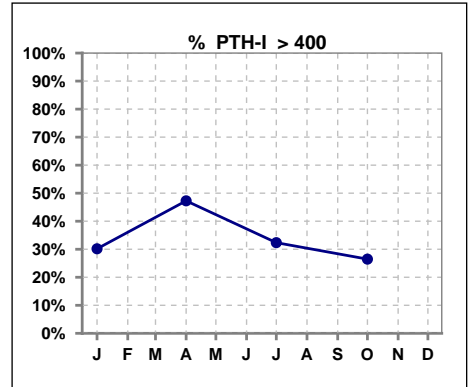
	Jan	Feb	Mar	Apr	May	Jun	Jul	Aug	Sep	Oct	Nov	Dec
# PTH-I	63			55			68			68		
# PTH-I < 150	15			6			15			14		
Pop. Mean	366			462			382			354		
Std. Deviation	332			422			320			280		
<b>% PTH-I &lt; 150</b>	<b>24%</b>			<b>11%</b>			<b>22%</b>			<b>21%</b>		



	Jan	Feb	Mar	Apr	May	Jun	Jul	Aug	Sep	Oct	Nov	Dec
# PTH-I	63			55			68			68		
# PTH-I > 300	32			37			33			34		
Pop. Mean	366			462			382			354		
Std. Deviation	332			422			320			280		
<b>% PTH-I &gt; 300</b>	<b>51%</b>			<b>67%</b>			<b>49%</b>			<b>50%</b>		



	Jan	Feb	Mar	Apr	May	Jun	Jul	Aug	Sep	Oct	Nov	Dec
# PTH-I	63			55			68			68		
# PTH-I > 400	19			26			22			18		
Pop. Mean	366			462			382			354		
Std. Deviation	332			422			320			280		
<b>% PTH-I &gt; 400</b>	<b>30%</b>			<b>47%</b>			<b>32%</b>			<b>26%</b>		

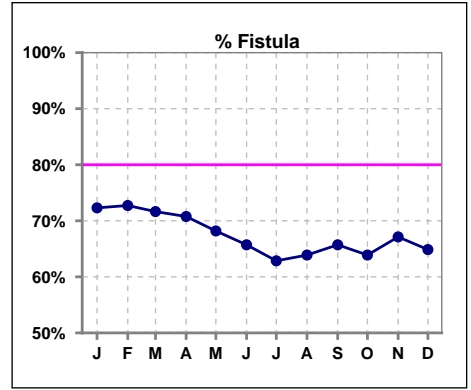


Methodology: a) All labs for 'Adequacy of Dialysis', 'Nutrition', 'Osteodystrophy', 'Anemia' and 'Diabetes' based on last value of month; b) BP's and #L processed are average of all values for month; c) Access data takes last access of month; d) Values for SGA and 'Infection Control' use most recent result.

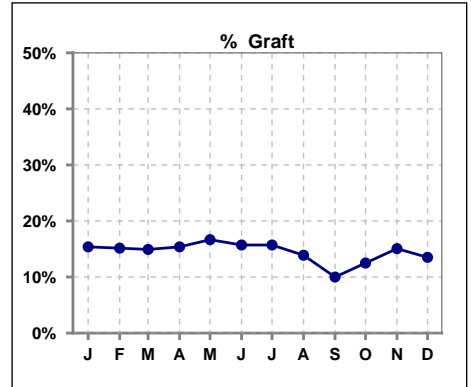


**IV. ACCESS**

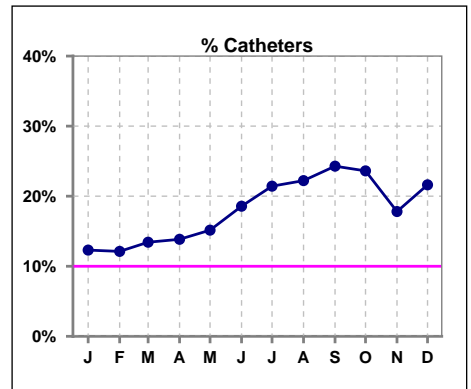
	Jan	Feb	Mar	Apr	May	Jun	Jul	Aug	Sep	Oct	Nov	Dec
# Access	65	66	67	65	66	70	70	72	70	72	73	74
# Fistula	47	48	48	46	45	46	44	46	46	46	49	48
% Fistula	72%	73%	72%	71%	68%	66%	63%	64%	66%	64%	67%	65%



	Jan	Feb	Mar	Apr	May	Jun	Jul	Aug	Sep	Oct	Nov	Dec
# Access	65	66	67	65	66	70	70	72	70	72	73	74
# Graft	10	10	10	10	11	11	11	10	7	9	11	10
% Graft	15%	15%	15%	15%	17%	16%	16%	14%	10%	13%	15%	14%



	Jan	Feb	Mar	Apr	May	Jun	Jul	Aug	Sep	Oct	Nov	Dec
# Access	65	66	67	65	66	70	70	72	70	72	73	74
# Catheters	8	8	9	9	10	13	15	16	17	17	13	16
% Catheters	12%	12%	13%	14%	15%	19%	21%	22%	24%	24%	18%	22%



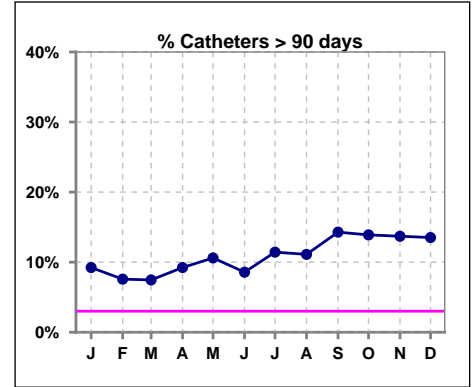
Methodology: a) All labs for 'Adequacy of Dialysis', 'Nutrition', 'Osteodystrophy', 'Anemia' and 'Diabetes' based on last value of month; b) BP's and #L processed are average of all values for month; c) Access data takes last access of month; d) Values for SGA and 'Infection Control' use most recent result.

**IV. ACCESS - CONT.**

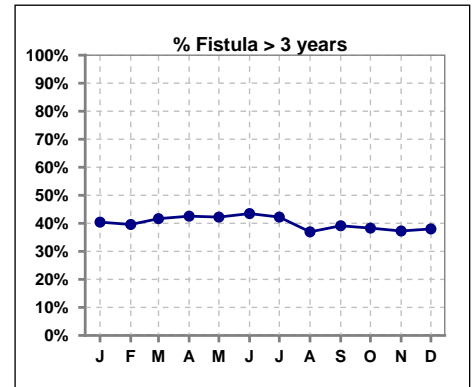
**Catheters > 90 days**

	Jan	Feb	Mar	Apr	May	Jun	Jul	Aug	Sep	Oct	Nov	Dec
<b># Access</b>	65	66	67	65	66	70	70	72	70	72	73	74
<b># Catheters</b>	6	5	5	6	7	6	8	8	10	10	10	10
<b>% Catheters</b>	9%	8%	7%	9%	11%	9%	11%	11%	14%	14%	14%	14%

Definition: Catheter in use on last treatment of the month



	Jan	Feb	Mar	Apr	May	Jun	Jul	Aug	Sep	Oct	Nov	Dec
<b># Fistula</b>	47	48	48	47	45	46	45	46	46	47	51	50
<b># Fistula &gt; 3 yrs</b>	19	19	20	20	19	20	19	17	18	18	19	19
<b>% Fistula &gt; 3 yrs</b>	40%	40%	42%	43%	42%	43%	42%	37%	39%	38%	37%	38%



All rates are calculated per 100 patient-month

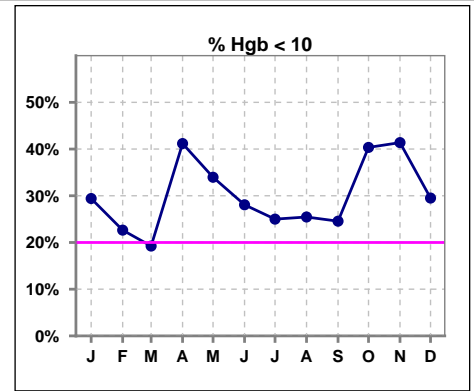
(number of infections/number of accesses x100)

LCKC	Total Fistula	Fistula Infected	Fistula ARB Rate	National Rate	Total Grafts	Graft Infected	Graft ARB Rate	National Rate	Total Cath	Cath Infected	Cath ARB Rate	National Rate	Total Accesses	Total Access Infected	All ARB Rate Per 100 pt- Months	National Rate
2014-2015																
Month																
Dec	46	0	0.00	0.23	10	0	0.00	0.51	6	0	0.00	2.55	62	0	0.00	
Jan	46	0	0.00	0.23	9	0	0.00	0.51	6	0	0.00	2.55	61	0	0.00	
Feb	47	1	2.13	0.23	9	0	0.00	0.51	8	0	0.00	2.55	64	1	1.56	
Mar	47	0	0.00	0.23	10	0	0.00	0.51	8	0	0.00	2.55	65	0	0.00	
April	45	0	0.00	0.23	8	0	0.00	0.51	10	0	0.00	2.55	63	0	0.00	
May	46	0	0.00	0.23	9	0	0.00	0.51	10	0	0.00	2.55	65	0	0.00	
June	43	0	0.00	0.23	11	0	0.00	0.51	9	0	0.00	2.55	63	0	0.00	
July	46	0	0.00	0.23	11	0	0.00	0.51	12	0	0.00	2.55	69	0	0.00	
Aug	45	0	0.00	0.23	11	0	0.00	0.51	13	0	0.00	2.55	69	0	0.00	
Sept	45	0	0.00	0.23	10	0	0.00	0.51	17	0	0.00	2.55	72	0	0.00	
Oct	47	0	0.00	0.23	8	0	0.00	0.51	15	0	0.00	2.55	70	0	0.00	
Nov	49	0	0.00	0.23	11	0	0.00	0.51	11	0	0.00	2.55	71	0	0.00	
Annual Total:	411	1	0.24	0.23	88	0	0.00	0.51	82	0	0.00	2.55	581	1	0.17	0.88

**V. ANEMIA**

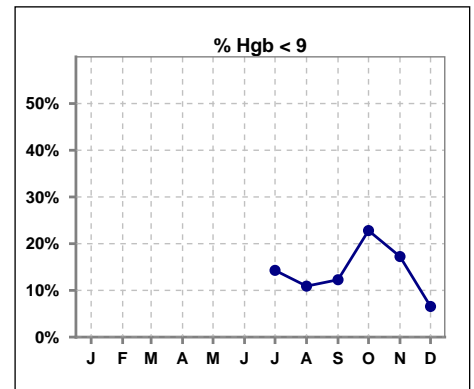
	Jan	Feb	Mar	Apr	May	Jun	Jul	Aug	Sep	Oct	Nov	Dec
# Hgb	51	53	52	51	53	57	56	55	57	57	58	61
# Hgb < 10	15	12	10	21	18	16	14	14	14	23	24	18
Pop. Mean	10.4	10.7	10.5	10.2	10.3	10.3	10.5	10.5	10.6	10.2	10.2	10.5
Std. Deviation	1.1	1.0	1.1	1.3	1.1	1.1	1.2	1.2	1.3	1.5	1.2	1.1
% Hgb < 10	29%	23%	19%	41%	34%	28%	25%	25%	25%	40%	41%	30%

Note: Excludes patients who received no ESA in month.



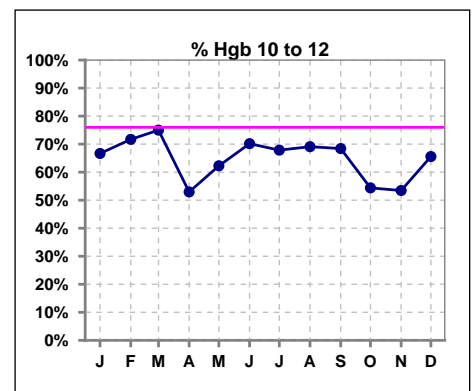
	Jan	Feb	Mar	Apr	May	Jun	Jul	Aug	Sep	Oct	Nov	Dec
# Hgb							56	55	57	57	58	61
# Hgb < 9							8	6	7	13	10	4
Pop. Mean							10.5	10.5	10.6	10.2	10.2	10.5
Std. Deviation							1.2	1.2	1.3	1.5	1.2	1.1
% Hgb < 9							14%	11%	12%	23%	17%	7%

Note: Excludes patients who received no ESA in month.



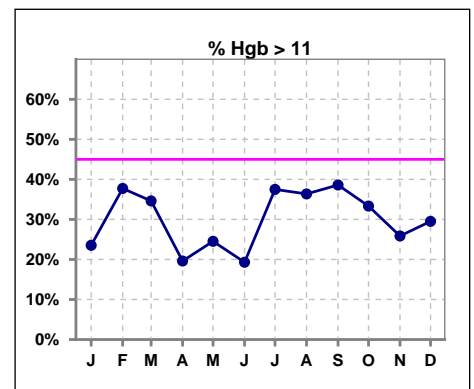
	Jan	Feb	Mar	Apr	May	Jun	Jul	Aug	Sep	Oct	Nov	Dec
# Hgb	51	53	52	51	53	57	56	55	57	57	58	61
# Hgb 10 to 12	34	38	39	27	33	40	38	38	39	31	31	40
Pop. Mean	10.4	10.7	10.5	10.2	10.3	10.3	10.5	10.5	10.6	10.2	10.2	10.5
Std. Deviation	1.1	1.0	1.1	1.3	1.1	1.1	1.2	1.2	1.3	1.5	1.2	1.1
% Hgb 10 to 12	67%	72%	75%	53%	62%	70%	68%	69%	68%	54%	53%	66%

Note: Excludes patients who received no ESA in month.



	Jan	Feb	Mar	Apr	May	Jun	Jul	Aug	Sep	Oct	Nov	Dec
# Hgb	51	53	52	51	53	57	56	55	57	57	58	61
# Hgb > 11	12	20	18	10	13	11	21	20	22	19	15	18
Pop. Mean	10.4	10.7	10.5	10.2	10.3	10.3	10.5	10.5	10.6	10.2	10.2	10.5
Std. Deviation	1.1	1.0	1.1	1.3	1.1	1.1	1.2	1.2	1.3	1.5	1.2	1.1
% Hgb > 11	24%	38%	35%	20%	25%	19%	38%	36%	39%	33%	26%	30%

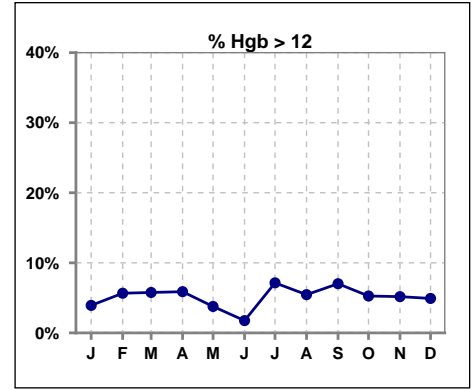
Note: Excludes patients who received no ESA in month.



**V. ANEMIA - CONT.**

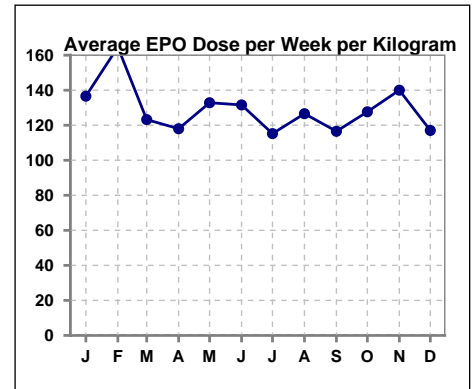
	Jan	Feb	Mar	Apr	May	Jun	Jul	Aug	Sep	Oct	Nov	Dec
# Hgb	51	53	52	51	53	57	56	55	57	57	58	61
# Hgb > 12	2	3	3	3	2	1	4	3	4	3	3	3
Pop. Mean	10.4	10.7	10.5	10.2	10.3	10.3	10.5	10.5	10.6	10.2	10.2	10.5
Std. Deviation	1.1	1.0	1.1	1.3	1.1	1.1	1.2	1.2	1.3	1.5	1.2	1.1
% Hgb > 12	4%	6%	6%	6%	4%	2%	7%	5%	7%	5%	5%	5%

Note: Excludes patients who received no ESA in month.



**Average EPO Dose per Week per Kilogram**

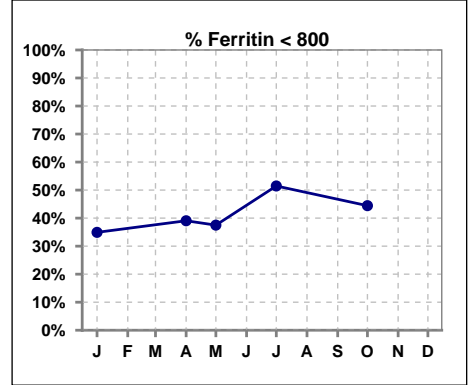
	Jan	Feb	Mar	Apr	May	Jun	Jul	Aug	Sep	Oct	Nov	Dec
# Average EPO	136.6	164.6	123.2	118.0	132.8	131.6	115.2	126.6	116.5	127.7	140.0	117.0



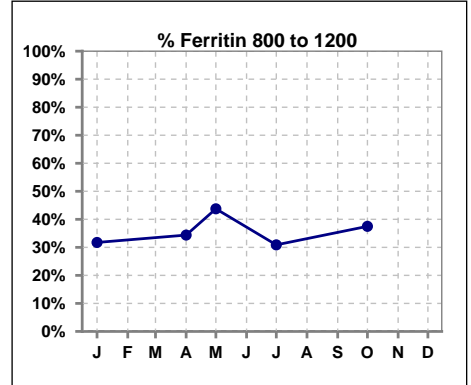
**V. ANEMIA - CONT.**

**Iron Profile**

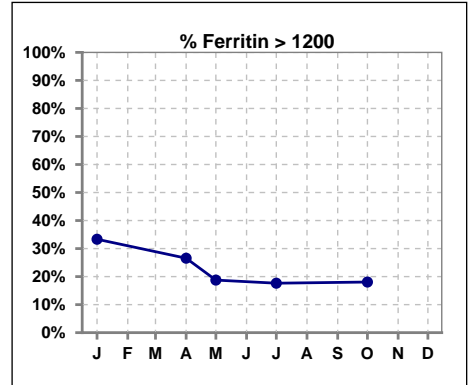
	Jan	Feb	Mar	Apr	May	Jun	Jul	Aug	Sep	Oct	Nov	Dec
# Ferritin	63			64	16		68			72		
# Ferritin < 800	22			25	6		35			32		
Pop. Mean	986			971	931		819			880		
Std. Deviation	432			494	372		379			462		
<b>% Ferritin &lt; 800</b>	<b>35%</b>			<b>39%</b>	<b>38%</b>		<b>51%</b>			<b>44%</b>		



	Jan	Feb	Mar	Apr	May	Jun	Jul	Aug	Sep	Oct	Nov	Dec
# Ferritin	63			64	16		68			72		
# Ferritin 800 to 1200	20			22	7		21			27		
Pop. Mean	986			971	931		819			880		
Std. Deviation	432			494	372		379			462		
<b>% Ferritin 800 to 1200</b>	<b>32%</b>			<b>34%</b>	<b>44%</b>		<b>31%</b>			<b>38%</b>		

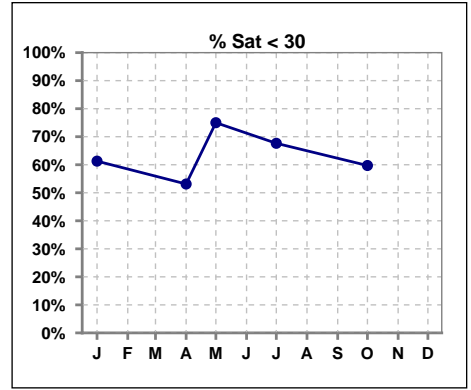


	Jan	Feb	Mar	Apr	May	Jun	Jul	Aug	Sep	Oct	Nov	Dec
# Ferritin	63			64	16		68			72		
# Ferritin > 1200	21			17	3		12			13		
Pop. Mean	986			971	931		819			880		
Std. Deviation	432			494	372		379			462		
<b>% Ferritin &gt; 1200</b>	<b>33%</b>			<b>27%</b>	<b>19%</b>		<b>18%</b>			<b>18%</b>		

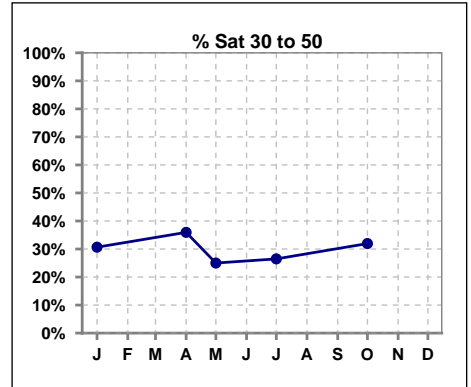


**V. ANEMIA - CONT.**

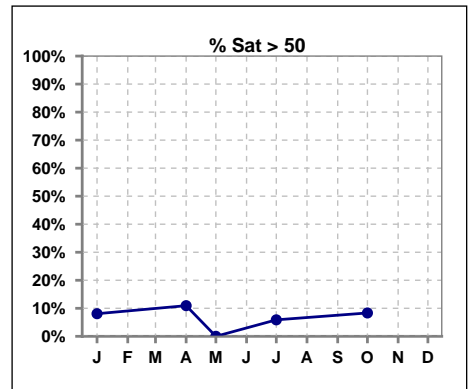
	Jan	Feb	Mar	Apr	May	Jun	Jul	Aug	Sep	Oct	Nov	Dec
# % Sat	62			64	16		68			72		
# % Sat < 30	38			34	12		46			43		
Pop. Mean	29			33	24		28			30		
Std. Deviation	13			16	10		11			18		
<b>% % Sat &lt; 30</b>	<b>61%</b>			<b>53%</b>	<b>75%</b>		<b>68%</b>			<b>60%</b>		



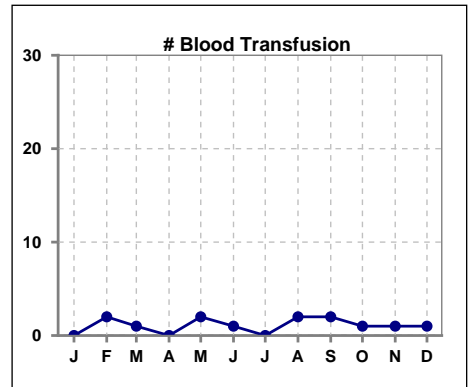
	Jan	Feb	Mar	Apr	May	Jun	Jul	Aug	Sep	Oct	Nov	Dec
# % Sat	62			64	16		68			72		
# % Sat 30 to 50	19			23	4		18			23		
Pop. Mean	29			33	24		28			30		
Std. Deviation	13			16	10		11			18		
<b>% % Sat 30 to 50</b>	<b>31%</b>			<b>36%</b>	<b>25%</b>		<b>26%</b>			<b>32%</b>		



	Jan	Feb	Mar	Apr	May	Jun	Jul	Aug	Sep	Oct	Nov	Dec
# % Sat	62			64	16		68			72		
# % Sat > 50	5			7	0		4			6		
Pop. Mean	29			33	24		28			30		
Std. Deviation	13			16	10		11			18		
<b>% % Sat &gt; 50</b>	<b>8%</b>			<b>11%</b>	<b>0%</b>		<b>6%</b>			<b>8%</b>		

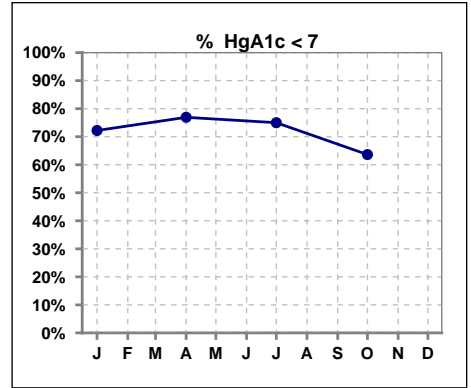


	Jan	Feb	Mar	Apr	May	Jun	Jul	Aug	Sep	Oct	Nov	Dec
# Patient	65	66	67	65	66	72	73	75	70	72	73	74
# Blood Transfusion	0	2	1	0	2	1	0	2	2	1	1	1



**VI. Diabetes**

	Jan	Feb	Mar	Apr	May	Jun	Jul	Aug	Sep	Oct	Nov	Dec
# HgA1c	36			39			40			44		
# HgA1c < 7	26			30			30			28		
Pop. Mean	6.3			6.3			6.4			6.6		
Std. Deviation	1.12			1.11			1.13			1.22		
<b>% HgA1c &lt; 7</b>	<b>72%</b>			<b>77%</b>			<b>75%</b>			<b>64%</b>		

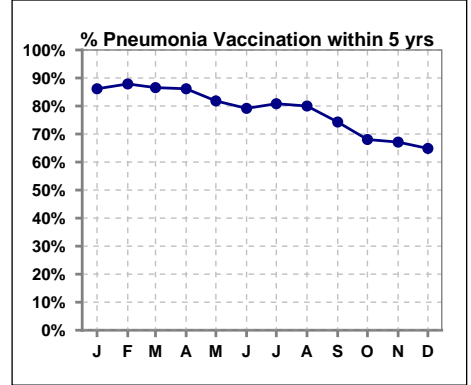




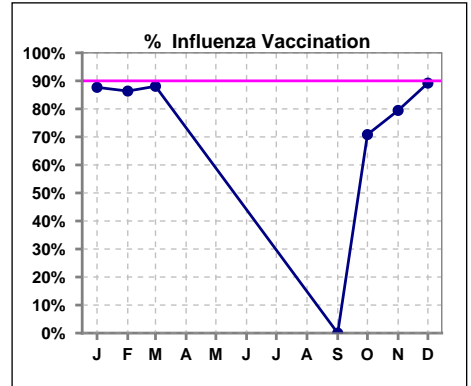
**VII. Infection Control**

**Pneumonia vaccination within the past five years**

	Jan	Feb	Mar	Apr	May	Jun	Jul	Aug	Sep	Oct	Nov	Dec
# Patient	65	66	67	65	66	72	73	75	70	72	73	74
# Pneumonia	56	58	58	56	54	57	59	60	52	49	49	48
% Pneumonia	86%	88%	87%	86%	82%	79%	81%	80%	74%	68%	67%	65%



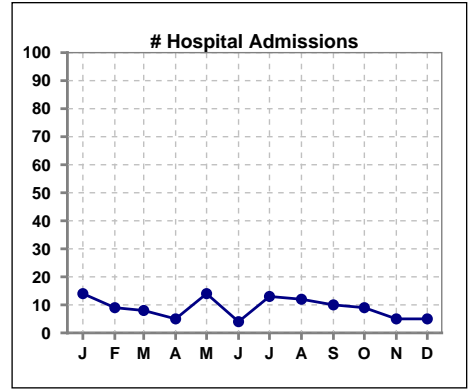
	Jan	Feb	Mar	Apr	May	Jun	Jul	Aug	Sep	Oct	Nov	Dec
# Patient	65	66	67						70	72	73	74
# Influenza	57	57	59						0	51	58	66
% Influenza	88%	86%	88%						0%	71%	79%	89%



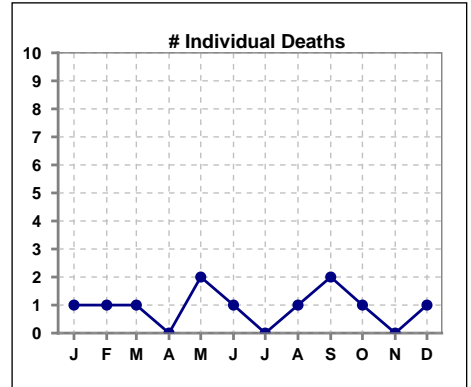
Methodology: a) All labs for 'Adequacy of Dialysis', 'Nutrition', 'Osteodystrophy', 'Anemia' and 'Diabetes' based on last value of month; b) BP's and #L processed are average of all values for month; c) Access data takes last access of month; d) Values for SGA and 'Infection Control' use most recent result.

**VIII. Outcome measures**

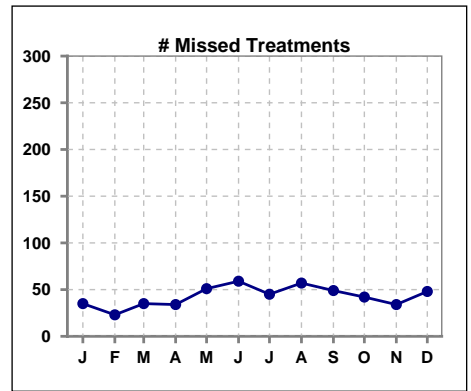
	Jan	Feb	Mar	Apr	May	Jun	Jul	Aug	Sep	Oct	Nov	Dec
# Patient	65	66	67	65	66	72	73	75	70	72	73	74
# Hospital Admissions	14	9	8	5	14	4	13	12	10	9	5	5



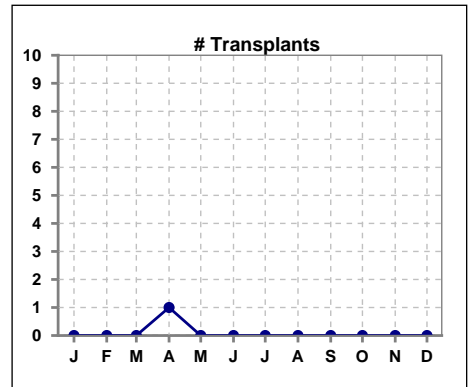
	Jan	Feb	Mar	Apr	May	Jun	Jul	Aug	Sep	Oct	Nov	Dec
# Patient	65	66	67	65	66	72	73	75	70	72	73	74
# Individual Deaths	1	1	1	0	2	1	0	1	2	1	0	1



	Jan	Feb	Mar	Apr	May	Jun	Jul	Aug	Sep	Oct	Nov	Dec
# Patient	65	66	67	65	66	72	73	75	70	72	73	74
# Missed Treatments	35	23	35	34	51	59	45	57	49	42	34	48



	Jan	Feb	Mar	Apr	May	Jun	Jul	Aug	Sep	Oct	Nov	Dec
# Patient	65	66	67	65	66	72	73	75	70	72	73	74
# Transplants	0	0	0	1	0	0	0	0	0	0	0	0



Methodology: a) All labs for 'Adequacy of Dialysis', 'Nutrition', 'Osteodystrophy', 'Anemia' and 'Diabetes' based on last value of month; b) BP's and #L processed are average of all values for month; c) Access data takes last access of month; d) Values for SGA and 'Infection Control' use most recent result.