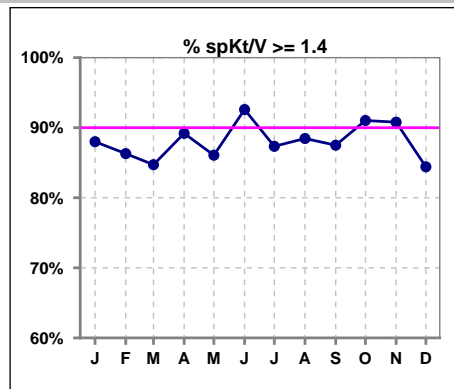
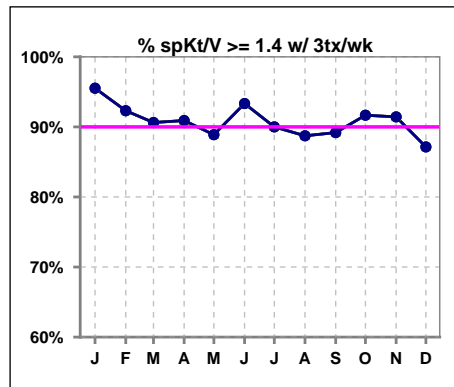


I. ADEQUACY OF DIALYSIS

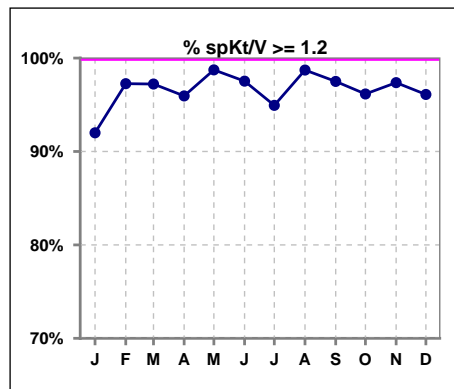
	Jan	Feb	Mar	Apr	May	Jun	Jul	Aug	Sep	Oct	Nov	Dec
# spKt/V	75	73	72	74	79	81	79	78	80	78	76	77
# spKt/V >= 1.4	66	63	61	66	68	75	69	69	70	71	69	65
Pop. Mean	1.72	1.71	1.70	1.71	1.72	1.73	1.69	1.69	1.66	1.72	1.73	1.68
Std. Deviation	0.34	0.33	0.33	0.33	0.33	0.29	0.33	0.30	0.28	0.31	0.29	0.32
% spKt/V >= 1.4	88%	86%	85%	89%	86%	93%	87%	88%	88%	91%	91%	84%



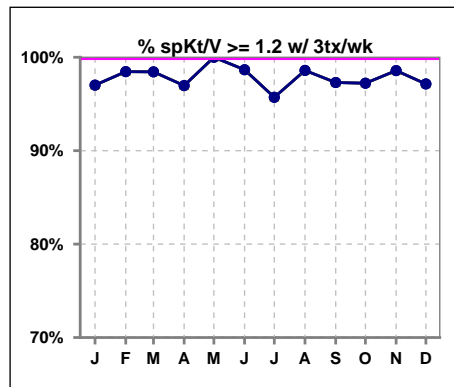
	Jan	Feb	Mar	Apr	May	Jun	Jul	Aug	Sep	Oct	Nov	Dec
# spKt/V w/ 3tx/wk	67	65	64	66	72	75	70	71	74	72	70	70
# spKt/V >=1.4 w/3tx/wk	64	60	58	60	64	70	63	63	66	66	64	61
Pop. Mean	1.76	1.74	1.73	1.73	1.74	1.74	1.70	1.70	1.67	1.73	1.73	1.68
Std. Deviation	0.30	0.29	0.27	0.28	0.32	0.28	0.32	0.29	0.26	0.29	0.27	0.31
% >=1.4 w/3tx/wk	96%	92%	91%	91%	89%	93%	90%	89%	89%	92%	91%	87%



	Jan	Feb	Mar	Apr	May	Jun	Jul	Aug	Sep	Oct	Nov	Dec
# spKt/V	75	73	72	74	79	81	79	78	80	78	76	77
# spKt/V >= 1.2	69	71	70	71	78	79	75	77	78	75	74	74
Pop. Mean	1.72	1.71	1.70	1.71	1.72	1.73	1.69	1.69	1.66	1.72	1.73	1.68
Std. Deviation	0.34	0.33	0.33	0.33	0.33	0.29	0.33	0.30	0.28	0.31	0.29	0.32
% spKt/V >= 1.2	92%	97%	97%	96%	99%	98%	95%	99%	98%	96%	97%	96%



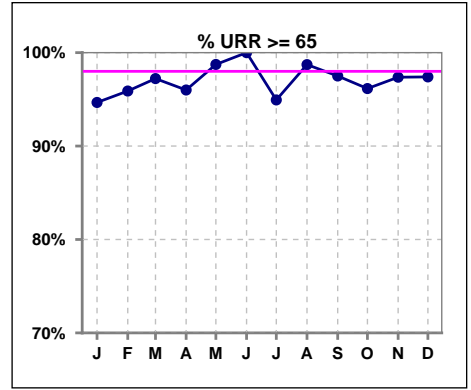
	Jan	Feb	Mar	Apr	May	Jun	Jul	Aug	Sep	Oct	Nov	Dec
# spKt/V w/ 3tx/wk	67	65	64	66	72	75	70	71	74	72	70	70
# spKt/V >=1.2 w/3tx/wk	65	64	63	64	72	74	67	70	72	70	69	68
Pop. Mean	1.76	1.74	1.73	1.73	1.74	1.74	1.70	1.70	1.67	1.73	1.73	1.68
Std. Deviation	0.30	0.29	0.27	0.28	0.32	0.28	0.32	0.29	0.26	0.29	0.27	0.31
% >=1.2 w/3tx/wk	97%	98%	98%	97%	100%	99%	96%	99%	97%	97%	99%	97%



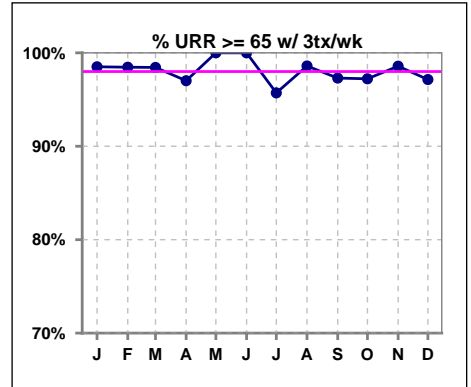
Methodology: a) All labs for 'Adequacy of Dialysis', 'Nutrition', 'Osteodystrophy', 'Anemia' and 'Diabetes' based on last value of month; b) BP's and #L processed are average of all values for month; c) Access data takes last access of month; d) Values for SGA and 'Infection Control' use most recent result.

I. ADEQUACY OF DIALYSIS - CONT.

	Jan	Feb	Mar	Apr	May	Jun	Jul	Aug	Sep	Oct	Nov	Dec
# URR	75	73	72	75	79	81	79	78	80	78	76	77
# URR >= 65	71	70	70	72	78	81	75	77	78	75	74	75
Pop. Mean	77	77	77	77	77	77	76	77	76	77	77	76
Std. Deviation	6.37	6.50	6.15	8.07	5.88	4.86	6.77	5.36	5.34	5.79	5.39	5.92
% URR >= 65	95%	96%	97%	96%	99%	100%	95%	99%	98%	96%	97%	97%



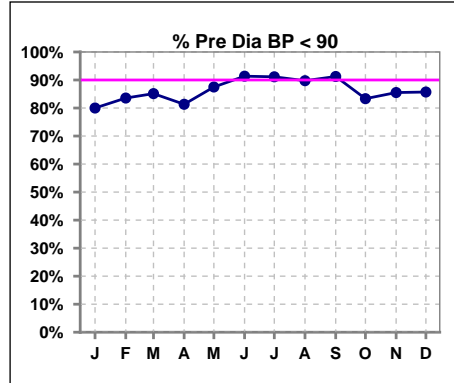
	Jan	Feb	Mar	Apr	May	Jun	Jul	Aug	Sep	Oct	Nov	Dec
# URR w/ 3tx/wk	67	65	64	67	72	75	70	71	74	72	70	70
# URR>=65 w/ 3tx/wk	66	64	63	65	72	75	67	70	72	70	69	68
Pop. Mean	78	78	77	78	77	78	77	77	76	77	77	76
Std. Deviation	5.31	5.77	5.02	5.70	5.28	4.62	6.69	5.22	5.17	5.56	5.08	5.72
% URR>=65 w/ 3tx/wk	99%	98%	98%	97%	100%	100%	96%	99%	97%	97%	99%	97%



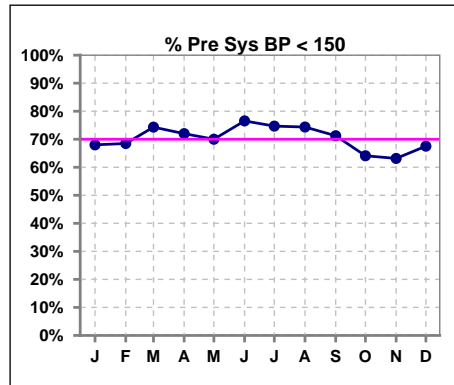
I. ADEQUACY OF DIALYSIS - CONT.

Blood Pressure Control (Pre)

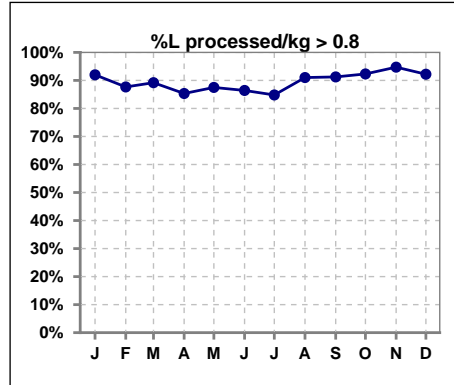
	Jan	Feb	Mar	Apr	May	Jun	Jul	Aug	Sep	Oct	Nov	Dec
# Pre Dia BP	75	73	74	75	80	81	79	78	80	78	76	77
# Pre Dia BP < 90	60	61	63	61	70	74	72	70	73	65	65	66
Pop. Mean	77	76	74	75	74	74	74	75	74	75	75	75
Std. Deviation	11.9	12.3	11.9	11.9	11.1	11.2	12.1	11.9	11.6	13.0	13.6	14.1
% Pre Dia BP < 90	80%	84%	85%	81%	88%	91%	91%	90%	91%	83%	86%	86%



	Jan	Feb	Mar	Apr	May	Jun	Jul	Aug	Sep	Oct	Nov	Dec
# Pre Sys BP	75	73	74	75	80	81	79	78	80	78	76	77
# Pre Sys BP < 150	51	50	55	54	56	62	59	58	57	50	48	52
Pop. Mean	141	141	138	139	139	138	139	139	140	142	142	141
Std. Deviation	17.6	18.7	19.8	19.8	19.0	19.0	20.4	20.6	20.6	22.4	23.4	23.6
%Pre Sys BP <150	68%	68%	74%	72%	70%	77%	75%	74%	71%	64%	63%	68%



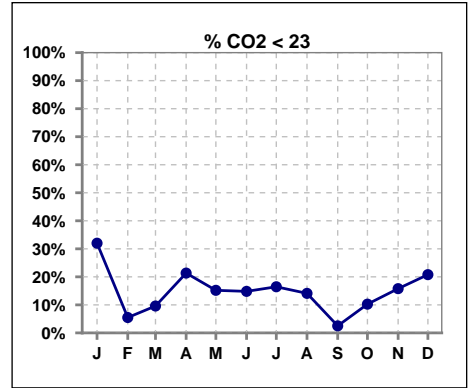
	Jan	Feb	Mar	Apr	May	Jun	Jul	Aug	Sep	Oct	Nov	Dec
# L processed/kg	75	73	74	75	80	81	79	78	80	78	76	77
# L processed/kg>0.8	69	64	66	64	70	70	67	71	73	72	72	71
Pop. Mean	1	1	1	1	1	1	1	1	1	1	1	1
Std. Deviation	0.3	0.3	0.2	0.3	0.3	0.3	0.3	0.3	0.3	0.3	0.3	0.3
% L processed/kg>0.8	92%	88%	89%	85%	88%	86%	85%	91%	91%	92%	95%	92%



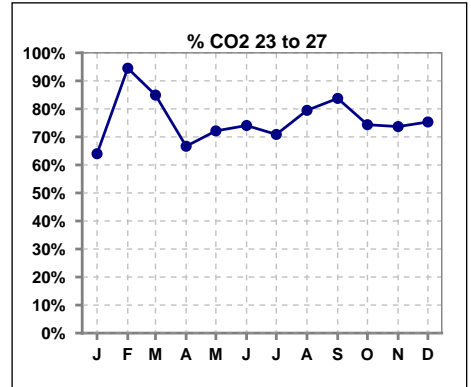
Methodology: a) All labs for 'Adequacy of Dialysis', 'Nutrition', 'Osteodystrophy', 'Anemia' and 'Diabetes' based on last value of month; b) BP's and #L processed are average of all values for month; c) Access data takes last access of month; d) Values for SGA and 'Infection Control' use most recent result.

I. ADEQUACY OF DIALYSIS - CONT.

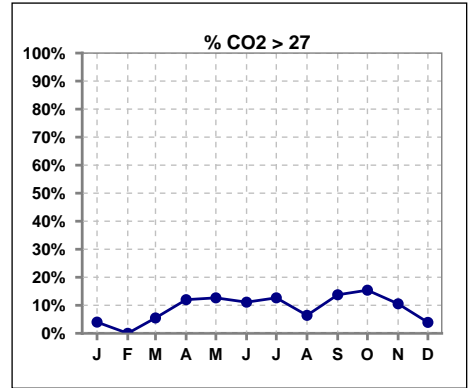
	Jan	Feb	Mar	Apr	May	Jun	Jul	Aug	Sep	Oct	Nov	Dec
# CO2	75	73	73	75	79	81	79	78	80	78	76	77
# CO2 < 23	24	4	7	16	12	12	13	11	2	8	12	16
Pop. Mean	24	25	25	25	25	25	25	24	25	25	25	24
Std. Deviation	2.14	1.63	1.84	2.48	2.32	2.32	2.28	1.91	1.92	1.91	2.03	2.10
% CO2 < 23	32%	5%	10%	21%	15%	15%	16%	14%	3%	10%	16%	21%



	Jan	Feb	Mar	Apr	May	Jun	Jul	Aug	Sep	Oct	Nov	Dec
# CO2	75	73	73	75	79	81	79	78	80	78	76	77
# CO2 23 to 27	48	69	62	50	57	60	56	62	67	58	56	58
Pop. Mean	24	25	25	25	25	25	25	24	25	25	25	24
Std. Deviation	2.14	1.63	1.84	2.48	2.32	2.32	2.28	1.91	1.92	1.91	2.03	2.10
% CO2 23 to 27	64%	95%	85%	67%	72%	74%	71%	79%	84%	74%	74%	75%



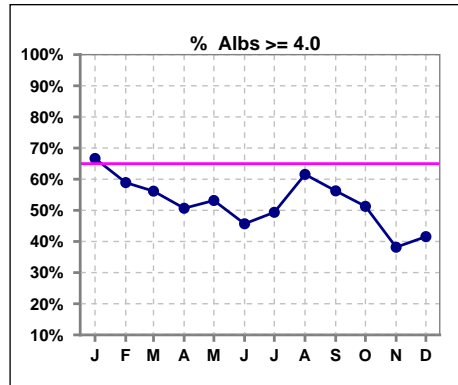
	Jan	Feb	Mar	Apr	May	Jun	Jul	Aug	Sep	Oct	Nov	Dec
# CO2	75	73	73	75	79	81	79	78	80	78	76	77
# CO2 > 27	3	0	4	9	10	9	10	5	11	12	8	3
Pop. Mean	24	25	25	25	25	25	25	24	25	25	25	24
Std. Deviation	2.14	1.63	1.84	2.48	2.32	2.32	2.28	1.91	1.92	1.91	2.03	2.10
% CO2 > 27	4%	0%	5%	12%	13%	11%	13%	6%	14%	15%	11%	4%



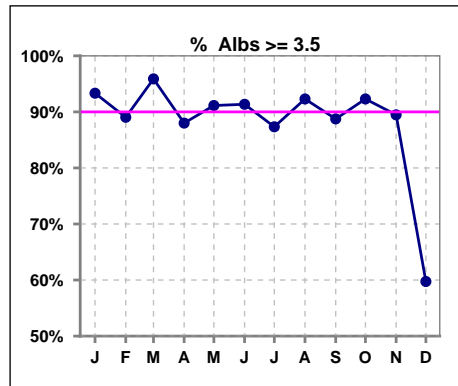
*Albumin values use BCG method - as of July 2001

II. NUTRITION

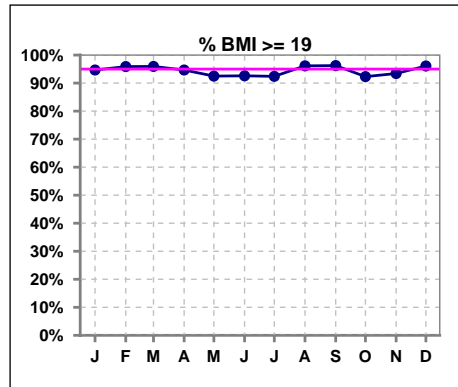
	Jan	Feb	Mar	Apr	May	Jun	Jul	Aug	Sep	Oct	Nov	Dec
# Albumin	75	73	73	75	79	81	79	78	80	78	76	77
# Albumin >= 4.0	50	43	41	38	42	37	39	48	45	40	29	32
Pop. Mean	4.0	4.0	4.0	3.9	4.0	3.9	3.9	4.0	4.0	4.0	3.9	3.7
Std. Deviation	0.34	0.40	0.40	0.39	0.39	0.39	0.40	0.39	0.40	0.36	0.39	0.56
% Alb >= 4.0	67%	59%	56%	51%	53%	46%	49%	62%	56%	51%	38%	42%



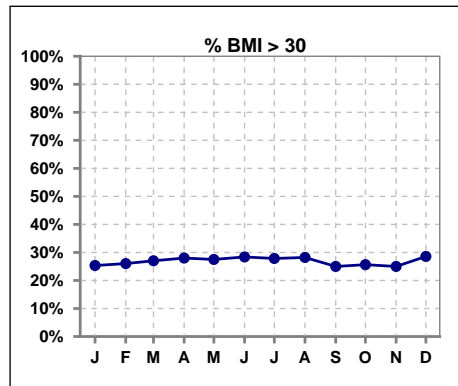
	Jan	Feb	Mar	Apr	May	Jun	Jul	Aug	Sep	Oct	Nov	Dec
# Albumin	75	73	73	75	79	81	79	78	80	78	76	77
# Albumin >= 3.5	70	65	70	66	72	74	69	72	71	72	68	46
Pop. Mean	4.0	4.0	4.0	3.9	4.0	3.9	3.9	4.0	4.0	4.0	3.9	3.7
Std. Deviation	0.34	0.40	0.40	0.39	0.39	0.39	0.40	0.39	0.40	0.36	0.39	0.56
% Alb >= 3.5	93%	89%	96%	88%	91%	91%	87%	92%	89%	92%	89%	60%



	Jan	Feb	Mar	Apr	May	Jun	Jul	Aug	Sep	Oct	Nov	Dec
# BMI	75	73	74	75	80	81	79	78	80	78	76	77
# BMI >= 19	71	70	71	71	74	75	73	75	77	72	71	74
Pop. Mean	27	27	27	27	27	27	27	27	27	27	27	27
Std. Deviation	6.9	6.7	6.7	6.5	6.7	6.9	6.5	6.4	6.4	6.5	6.4	6.5
% BMI >= 19	95%	96%	96%	95%	93%	93%	92%	96%	96%	92%	93%	96%



	Jan	Feb	Mar	Apr	May	Jun	Jul	Aug	Sep	Oct	Nov	Dec
# BMI	75	73	74	75	80	81	79	78	80	78	76	77
# BMI > 30	19	19	20	21	22	23	22	22	20	20	19	22
Pop. Mean	27	27	27	27	27	27	27	27	27	27	27	27
Std. Deviation	6.9	6.7	6.7	6.5	6.7	6.9	6.5	6.4	6.4	6.5	6.4	6.5
% BMI > 30	25%	26%	27%	28%	28%	28%	28%	28%	25%	26%	25%	29%

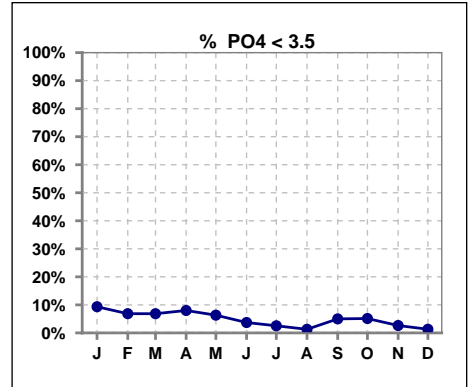


Methodology: a) All labs for 'Adequacy of Dialysis', 'Nutrition', 'Osteodystrophy', 'Anemia' and 'Diabetes' based on last value of month; b) BP's and #L processed are average of all values for month; c) Access data takes last access of month; d) Values for SGA and 'Infection Control' use most recent result.

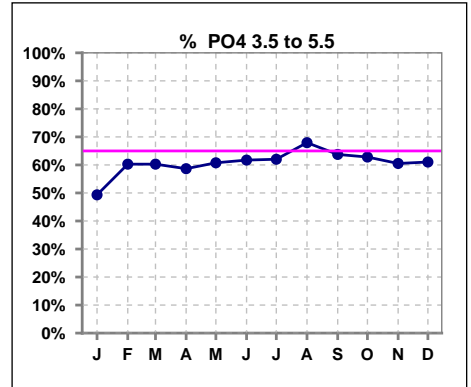
Lab methodology for PTH changed January 2012

III. OSTEODYSTROPHY

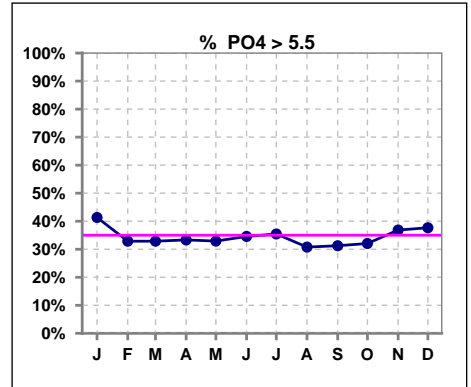
	Jan	Feb	Mar	Apr	May	Jun	Jul	Aug	Sep	Oct	Nov	Dec
# PO4	75	73	73	75	79	81	79	78	80	78	76	77
# PO4 < 3.5	7	5	5	6	5	3	2	1	4	4	2	1
Pop. Mean	5.6	5.4	5.3	5.4	5.5	5.7	5.5	5.4	5.3	5.4	5.5	5.6
Std. Deviation	1.89	1.64	1.64	1.55	1.77	2.22	1.66	1.48	1.56	1.70	1.67	1.72
% PO4 < 3.5	9%	7%	7%	8%	6%	4%	3%	1%	5%	5%	3%	1%



	Jan	Feb	Mar	Apr	May	Jun	Jul	Aug	Sep	Oct	Nov	Dec
# PO4	75	73	73	75	79	81	79	78	80	78	76	77
# PO4 3.5 to 5.5	37	44	44	44	48	50	49	53	51	49	46	47
Pop. Mean	5.6	5.4	5.3	5.4	5.5	5.7	5.5	5.4	5.3	5.4	5.5	5.6
Std. Deviation	1.89	1.64	1.64	1.55	1.77	2.22	1.66	1.48	1.56	1.70	1.67	1.72
% PO4 3.5 to 5.5	49%	60%	60%	59%	61%	62%	62%	68%	64%	63%	61%	61%



	Jan	Feb	Mar	Apr	May	Jun	Jul	Aug	Sep	Oct	Nov	Dec
# PO4	75	73	73	75	79	81	79	78	80	78	76	77
# PO4 > 5.5	31	24	24	25	26	28	28	24	25	25	28	29
Pop. Mean	5.6	5.4	5.3	5.4	5.5	5.7	5.5	5.4	5.3	5.4	5.5	5.6
Std. Deviation	1.89	1.64	1.64	1.55	1.77	2.22	1.66	1.48	1.56	1.70	1.67	1.72
% PO4 > 5.5	41%	33%	33%	33%	33%	35%	35%	31%	31%	32%	37%	38%

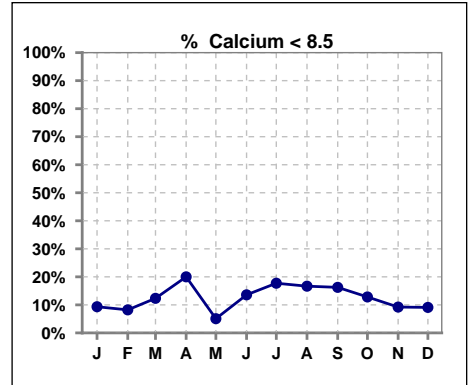


Methodology: a) All labs for 'Adequacy of Dialysis', 'Nutrition', 'Osteodystrophy', 'Anemia' and 'Diabetes' based on last value of month; b) BP's and #L processed are average of all values for month; c) Access data takes last access of month; d) Values for SGA and 'Infection Control' use most recent result.

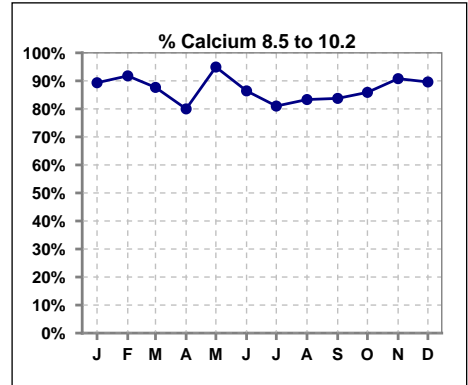
Lab methodology for PTH changed January 2012

III. OSTEODYSTROPHY - CONT.

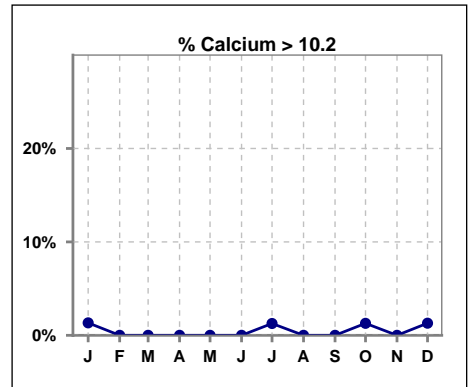
	Jan	Feb	Mar	Apr	May	Jun	Jul	Aug	Sep	Oct	Nov	Dec
# Calcium	75	73	73	75	79	81	79	78	80	78	76	77
# Calcium < 8.5	7	6	9	15	4	11	14	13	13	10	7	7
Pop. Mean	9.2	9.1	9.2	9.1	9.3	9.0	9.0	9.0	9.1	9.2	9.3	9.3
Std. Deviation	0.54	0.56	0.62	0.59	0.54	0.55	0.65	0.64	0.60	0.71	0.73	0.71
% Calcium < 8.5	9%	8%	12%	20%	5%	14%	18%	17%	16%	13%	9%	9%



	Jan	Feb	Mar	Apr	May	Jun	Jul	Aug	Sep	Oct	Nov	Dec
# Calcium	75	73	73	75	79	81	79	78	80	78	76	77
# Calcium 8.5 to 10.2	67	67	64	60	75	70	64	65	67	67	69	69
Pop. Mean	9.2	9.1	9.2	9.1	9.3	9.0	9.0	9.0	9.1	9.2	9.3	9.3
Std. Deviation	0.54	0.56	0.62	0.59	0.54	0.55	0.65	0.64	0.60	0.71	0.73	0.71
% Calcium 8.5 to 10.2	89%	92%	88%	80%	95%	86%	81%	83%	84%	86%	91%	90%



	Jan	Feb	Mar	Apr	May	Jun	Jul	Aug	Sep	Oct	Nov	Dec
# Calcium	75	73	73	75	79	81	79	78	80	78	76	77
# Calcium > 10.2	1	0	0	0	0	0	1	0	0	1	0	1
Pop. Mean	9.2	9.1	9.2	9.1	9.3	9.0	9.0	9.0	9.1	9.2	9.3	9.3
Std. Deviation	0.54	0.56	0.62	0.59	0.54	0.55	0.65	0.64	0.60	0.71	0.73	0.71
% Calcium > 10.2	1%	0%	0%	0%	0%	0%	1%	0%	0%	1%	0%	1%

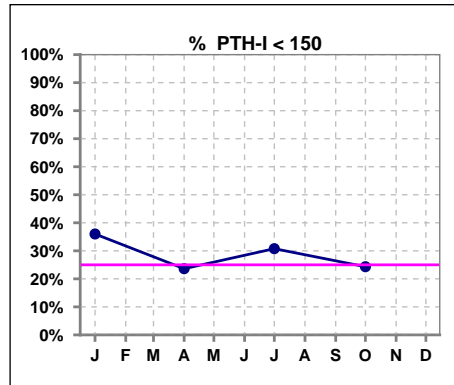


Methodology: a) All labs for 'Adequacy of Dialysis', 'Nutrition', 'Osteodystrophy', 'Anemia' and 'Diabetes' based on last value of month; b) BP's and #L processed are average of all values for month; c) Access data takes last access of month; d) Values for SGA and 'Infection Control' use most recent result.

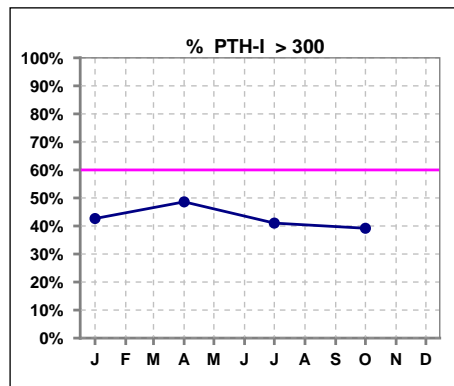
Lab methodology for PTH changed January 2012

III. OSTEODYSTROPHY - CONT.

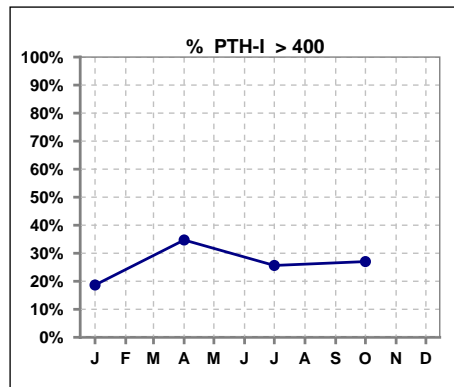
	Jan	Feb	Mar	Apr	May	Jun	Jul	Aug	Sep	Oct	Nov	Dec
# PTH-I	75			72			78			74		
# PTH-I < 150	27			17			24			18		
Pop. Mean	292			345			311			297		
Std. Deviation	230			254			293			198		
% PTH-I < 150	36%			24%			31%			24%		



	Jan	Feb	Mar	Apr	May	Jun	Jul	Aug	Sep	Oct	Nov	Dec
# PTH-I	75			72			78			74		
# PTH-I > 300	32			35			32			29		
Pop. Mean	292			345			311			297		
Std. Deviation	230			254			293			198		
% PTH-I > 300	43%			49%			41%			39%		



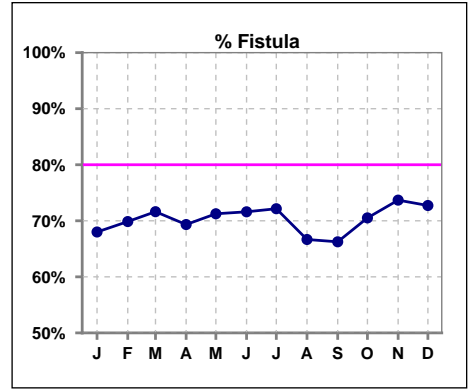
	Jan	Feb	Mar	Apr	May	Jun	Jul	Aug	Sep	Oct	Nov	Dec
# PTH-I	75			72			78			74		
# PTH-I > 400	14			25			20			20		
Pop. Mean	292			345			311			297		
Std. Deviation	230			254			293			198		
% PTH-I > 400	19%			35%			26%			27%		



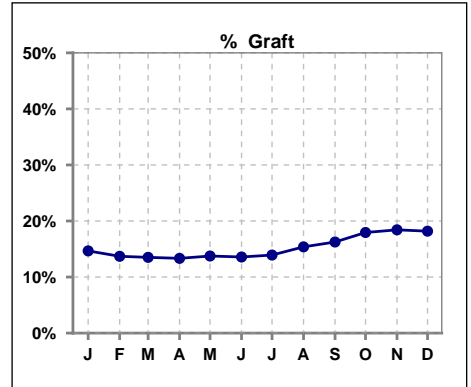
Methodology: a) All labs for 'Adequacy of Dialysis', 'Nutrition', 'Osteodystrophy', 'Anemia' and 'Diabetes' based on last value of month; b) BP's and #L processed are average of all values for month; c) Access data takes last access of month; d) Values for SGA and 'Infection Control' use most recent result.

IV. ACCESS

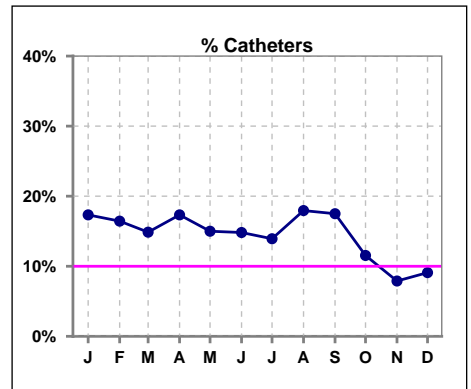
	Jan	Feb	Mar	Apr	May	Jun	Jul	Aug	Sep	Oct	Nov	Dec
# Access	75	73	74	75	80	81	79	78	80	78	76	77
# Fistula	51	51	53	52	57	58	57	52	53	55	56	56
% Fistula	68%	70%	72%	69%	71%	72%	72%	67%	66%	71%	74%	73%



	Jan	Feb	Mar	Apr	May	Jun	Jul	Aug	Sep	Oct	Nov	Dec
# Access	75	73	74	75	80	81	79	78	80	78	76	77
# Graft	11	10	10	10	11	11	11	12	13	14	14	14
% Graft	15%	14%	14%	13%	14%	14%	14%	15%	16%	18%	18%	18%



	Jan	Feb	Mar	Apr	May	Jun	Jul	Aug	Sep	Oct	Nov	Dec
# Access	75	73	74	75	80	81	79	78	80	78	76	77
# Catheters	13	12	11	13	12	12	11	14	14	9	6	7
% Catheters	17%	16%	15%	17%	15%	15%	14%	18%	18%	12%	8%	9%



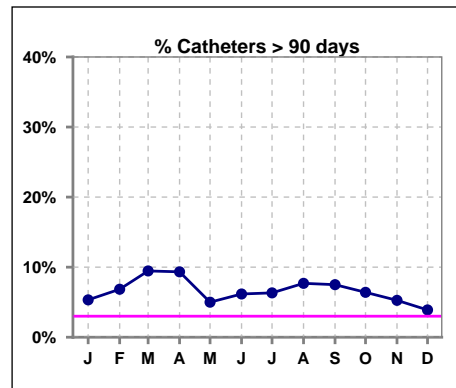
Methodology: a) All labs for 'Adequacy of Dialysis', 'Nutrition', 'Osteodystrophy', 'Anemia' and 'Diabetes' based on last value of month; b) BP's and #L processed are average of all values for month; c) Access data takes last access of month; d) Values for SGA and 'Infection Control' use most recent result.

IV. ACCESS - CONT.

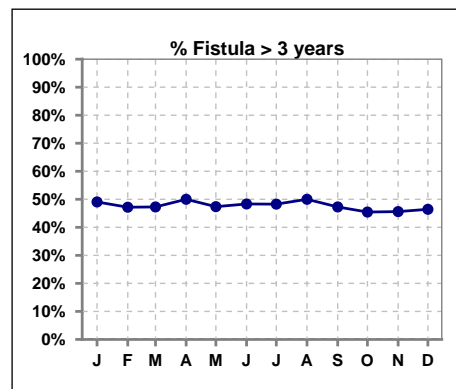
Catheters > 90 days

	Jan	Feb	Mar	Apr	May	Jun	Jul	Aug	Sep	Oct	Nov	Dec
# Access	75	73	74	75	80	81	79	78	80	78	76	77
# Catheters	4	5	7	7	4	5	5	6	6	5	4	3
% Catheters	5%	7%	9%	9%	5%	6%	6%	8%	8%	6%	5%	4%

Definition: Catheter in use on last treatment of the month



	Jan	Feb	Mar	Apr	May	Jun	Jul	Aug	Sep	Oct	Nov	Dec
# Fistula	53	53	55	54	57	60	58	54	55	55	57	56
# Fistula > 3 yrs	26	25	26	27	27	29	28	27	26	25	26	26
% Fistula > 3 yrs	49%	47%	47%	50%	47%	48%	48%	50%	47%	45%	46%	46%



All rates are calculated per 100 patient-month

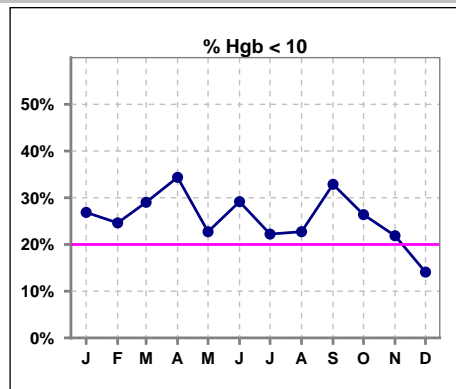
(number of infections/number of accesses x100)

KLKC	Total Fistula	Fistula Infected	Fistula ARB Rate	National Rate	Total Grafts	Graft Infected	Graft ARB Rate	National Rate	Total Cath	Cath Infected	Cath ARB Rate	National Rate	Total Accesses	Total Access Infected	All ARB Rate Per 100 pt- Months	National Rate
2014-2015																
Month																
Dec	51	0	0.00	0.23	10	0	0.00	0.51	9	0	0	2.55	70	0	0.00	
Jan	50	0	0.00	0.23	11	0	0.00	0.51	12	0	0	2.55	73	0	0.00	
Feb	51	0	0.00	0.23	12	0	0.00	0.51	11	0	0	2.55	74	0	0.00	
Mar	52	0	0.00	0.23	10	0	0.00	0.51	10	0	0	2.55	72	0	0.00	
April	54	0	0.00	0.23	9	0	0.00	0.51	10	0	0	2.55	73	0	0.00	
May	56	0	0.00	0.23	11	0	0.00	0.51	9	0	0	2.55	76	0	0.00	
June	57	0	0.00	0.23	12	0	0.00	0.51	9	1	11.11	2.55	78	1	1.28	
July	57	0	0.00	0.23	11	0	0.00	0.51	9	0	0	2.55	77	0	0.00	
August	55	0	0.00	0.23	11	0	0.00	0.51	13	0	0	2.55	79	0	0.00	
Sept	52	0	0.00	0.23	12	0	0.00	0.51	13	0	0	2.55	77	0	0.00	
Oct	55	0	0.00	0.23	14	0	0.00	0.51	10	0	0	2.55	79	0	0.00	
Nov	56	1	1.79	0.23	14	0	0.00	0.51	6	0	0	2.55	76	1	1.32	
Annual Total:	483	1	0.21	0.23	97	0	0.00	0.51	92	1	1.0869565	2.55	672	2	0.30	0.88

V. ANEMIA

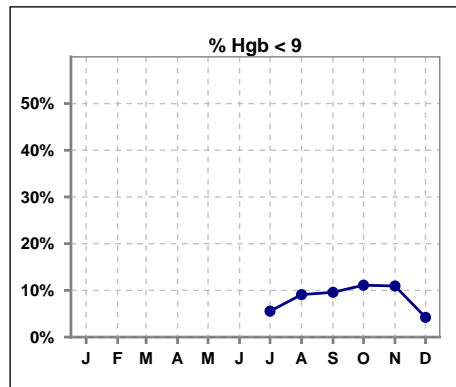
	Jan	Feb	Mar	Apr	May	Jun	Jul	Aug	Sep	Oct	Nov	Dec
# Hgb	67	65	62	64	66	72	72	66	73	72	64	71
# Hgb < 10	18	16	18	22	15	21	16	15	24	19	14	10
Pop. Mean	10.6	10.7	10.4	10.3	10.5	10.3	10.7	10.5	10.4	10.5	10.5	10.7
Std. Deviation	1.3	1.1	1.3	1.3	1.2	1.1	1.1	1.1	1.1	1.1	1.0	1.1
% Hgb < 10	27%	25%	29%	34%	23%	29%	22%	23%	33%	26%	22%	14%

Note: Excludes patients who received no ESA in month.



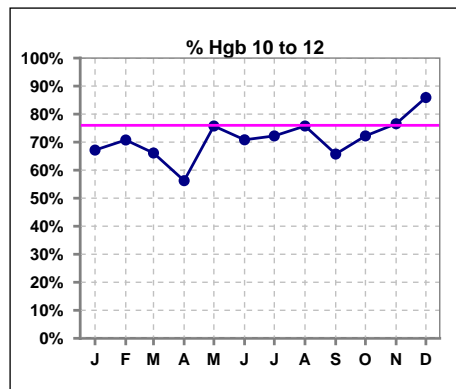
	Jan	Feb	Mar	Apr	May	Jun	Jul	Aug	Sep	Oct	Nov	Dec
# Hgb							72	66	73	72	64	71
# Hgb < 9							4	6	7	8	7	3
Pop. Mean							10.7	10.5	10.4	10.5	10.5	10.7
Std. Deviation							1.1	1.1	1.1	1.1	1.0	1.1
% Hgb < 9							6%	9%	10%	11%	11%	4%

Note: Excludes patients who received no ESA in month.



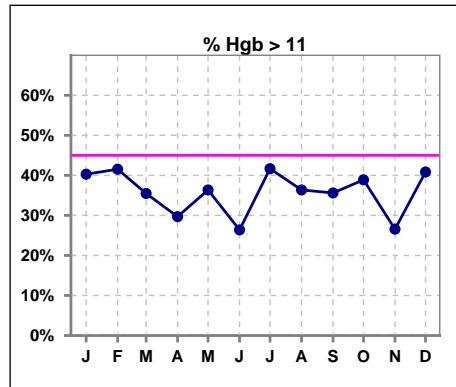
	Jan	Feb	Mar	Apr	May	Jun	Jul	Aug	Sep	Oct	Nov	Dec
# Hgb	67	65	62	64	66	72	72	66	73	72	64	71
# Hgb 10 to 12	45	46	41	36	50	51	52	50	48	52	49	61
Pop. Mean	10.6	10.7	10.4	10.3	10.5	10.3	10.7	10.5	10.4	10.5	10.5	10.7
Std. Deviation	1.3	1.1	1.3	1.3	1.2	1.1	1.1	1.1	1.1	1.1	1.0	1.1
% Hgb 10 to 12	67%	71%	66%	56%	76%	71%	72%	76%	66%	72%	77%	86%

Note: Excludes patients who received no ESA in month.



	Jan	Feb	Mar	Apr	May	Jun	Jul	Aug	Sep	Oct	Nov	Dec
# Hgb	67	65	62	64	66	72	72	66	73	72	64	71
# Hgb > 11	27	27	22	19	24	19	30	24	26	28	17	29
Pop. Mean	10.6	10.7	10.4	10.3	10.5	10.3	10.7	10.5	10.4	10.5	10.5	10.7
Std. Deviation	1.3	1.1	1.3	1.3	1.2	1.1	1.1	1.1	1.1	1.1	1.0	1.1
% Hgb > 11	40%	42%	35%	30%	36%	26%	42%	36%	36%	39%	27%	41%

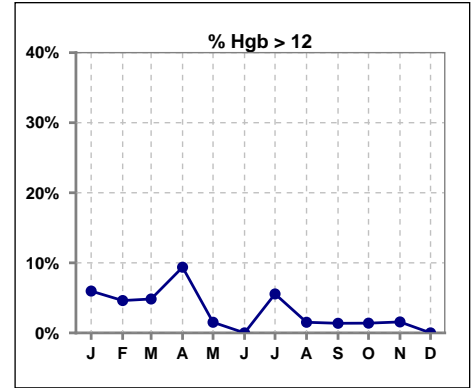
Note: Excludes patients who received no ESA in month.



V. ANEMIA - CONT.

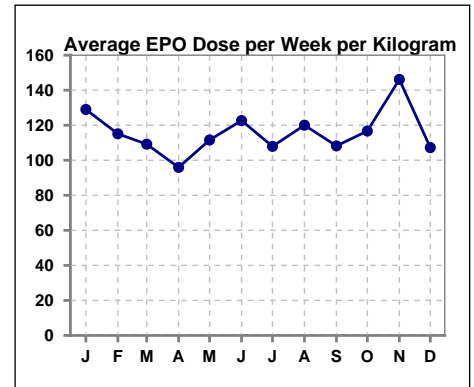
	Jan	Feb	Mar	Apr	May	Jun	Jul	Aug	Sep	Oct	Nov	Dec
# Hgb	67	65	62	64	66	72	72	66	73	72	64	71
# Hgb > 12	4	3	3	6	1	0	4	1	1	1	1	0
Pop. Mean	10.6	10.7	10.4	10.3	10.5	10.3	10.7	10.5	10.4	10.5	10.5	10.7
Std. Deviation	1.3	1.1	1.3	1.3	1.2	1.1	1.1	1.1	1.1	1.1	1.0	1.1
% Hgb > 12	6%	5%	5%	9%	2%	0%	6%	2%	1%	1%	2%	0%

Note: Excludes patients who received no ESA in month.



Average EPO Dose per Week per Kilogram

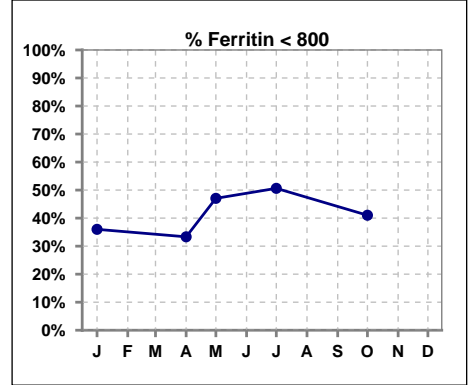
	Jan	Feb	Mar	Apr	May	Jun	Jul	Aug	Sep	Oct	Nov	Dec
# Average EPO	129.0	115.1	109.2	95.9	111.6	122.7	107.9	120.0	108.2	116.7	146.2	107.2



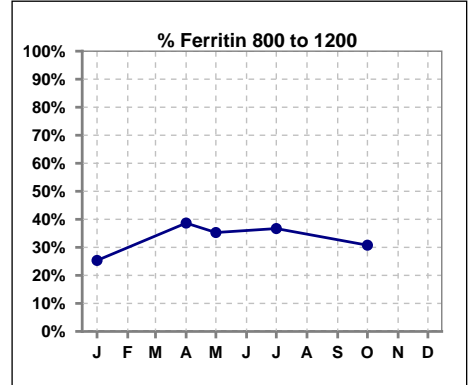
V. ANEMIA - CONT.

Iron Profile

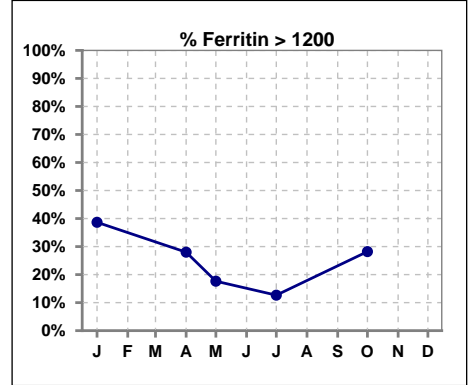
	Jan	Feb	Mar	Apr	May	Jun	Jul	Aug	Sep	Oct	Nov	Dec
# Ferritin	75			75	17		79			78		
# Ferritin < 800	27			25	8		40			32		
Pop. Mean	1059			994	986		803			974		
Std. Deviation	547			687	778		402			504		
% Ferritin < 800	36%			33%	47%		51%			41%		



	Jan	Feb	Mar	Apr	May	Jun	Jul	Aug	Sep	Oct	Nov	Dec
# Ferritin	75			75	17		79			78		
# Ferritin 800 to 1200	19			29	6		29			24		
Pop. Mean	1059			994	986		803			974		
Std. Deviation	547			687	778		402			504		
% Ferritin 800 to 1200	25%			39%	35%		37%			31%		



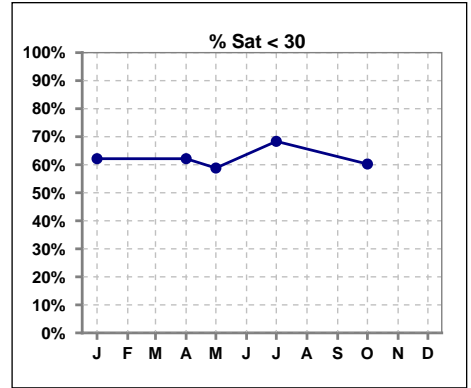
	Jan	Feb	Mar	Apr	May	Jun	Jul	Aug	Sep	Oct	Nov	Dec
# Ferritin	75			75	17		79			78		
# Ferritin > 1200	29			21	3		10			22		
Pop. Mean	1059			994	986		803			974		
Std. Deviation	547			687	778		402			504		
% Ferritin > 1200	39%			28%	18%		13%			28%		



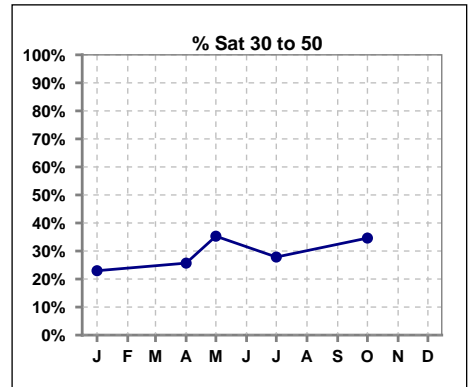
Methodology: a) All labs for 'Adequacy of Dialysis', 'Nutrition', 'Osteodystrophy', 'Anemia' and 'Diabetes' based on last value of month; b) BP's and #L processed are average of all values for month; c) Access data takes last access of month; d) Values for SGA and 'Infection Control' use most recent result.

V. ANEMIA - CONT.

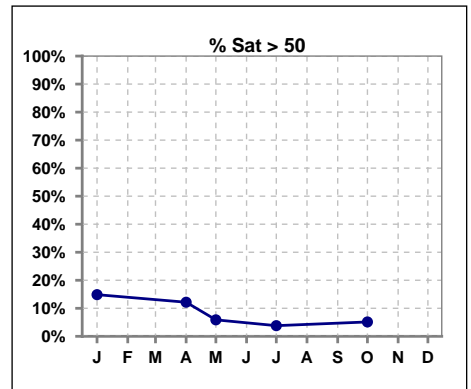
	Jan	Feb	Mar	Apr	May	Jun	Jul	Aug	Sep	Oct	Nov	Dec
# % Sat	74			74	17		79			78		
# % Sat < 30	46			46	10		54			47		
Pop. Mean	32			31	31		26			29		
Std. Deviation	18			17	20		16			15		
% % Sat < 30	62%			62%	59%		68%			60%		



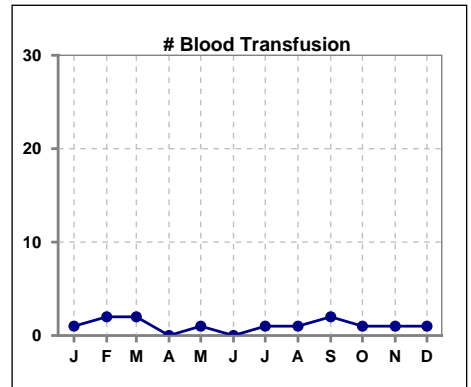
	Jan	Feb	Mar	Apr	May	Jun	Jul	Aug	Sep	Oct	Nov	Dec
# % Sat	74			74	17		79			78		
# % Sat 30 to 50	17			19	6		22			27		
Pop. Mean	32			31	31		26			29		
Std. Deviation	18			17	20		16			15		
% % Sat 30 to 50	23%			26%	35%		28%			35%		



	Jan	Feb	Mar	Apr	May	Jun	Jul	Aug	Sep	Oct	Nov	Dec
# % Sat	74			74	17		79			78		
# % Sat > 50	11			9	1		3			4		
Pop. Mean	32			31	31		26			29		
Std. Deviation	18			17	20		16			15		
% % Sat > 50	15%			12%	6%		4%			5%		



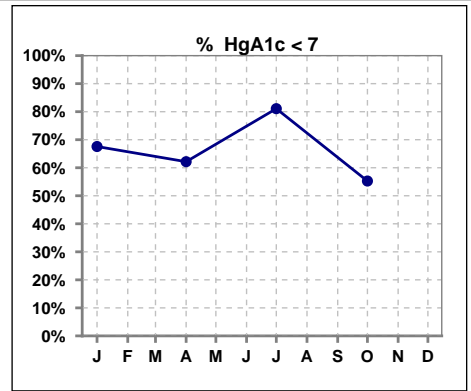
	Jan	Feb	Mar	Apr	May	Jun	Jul	Aug	Sep	Oct	Nov	Dec
# Patient	75	73	75	75	80	81	79	78	80	78	76	77
# Blood Transfusion	1	2	2	0	1	0	1	1	2	1	1	1



Methodology: a) All labs for 'Adequacy of Dialysis', 'Nutrition', 'Osteodystrophy', 'Anemia' and 'Diabetes' based on last value of month; b) BP's and #L processed are average of all values for month; c) Access data takes last access of month; d) Values for SGA and 'Infection Control' use most recent result.

VI. Diabetes

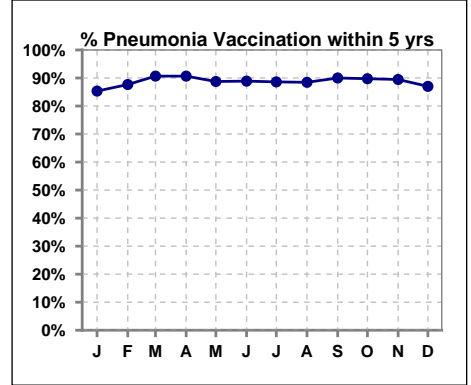
	Jan	Feb	Mar	Apr	May	Jun	Jul	Aug	Sep	Oct	Nov	Dec
# HgA1c	37			37			37			38		
# HgA1c < 7	25			23			30			21		
Pop. Mean	6.7			6.4			6.3			6.9		
Std. Deviation	1.15			1.03			0.85			1.29		
% HgA1c < 7	68%			62%			81%			55%		



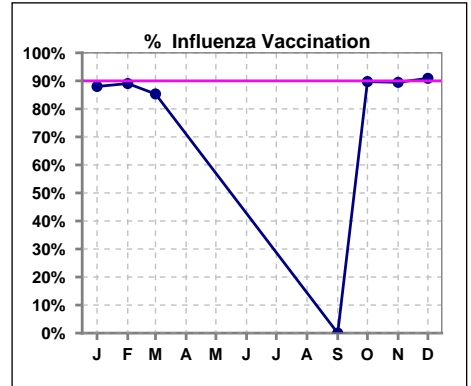
VII. Infection Control

Pneumonia vaccination within the past five years

	Jan	Feb	Mar	Apr	May	Jun	Jul	Aug	Sep	Oct	Nov	Dec
# Patient	75	73	75	75	80	81	79	78	80	78	76	77
# Pneumonia	64	64	68	68	71	72	70	69	72	70	68	67
% Pneumonia	85%	88%	91%	91%	89%	89%	89%	88%	90%	90%	89%	87%



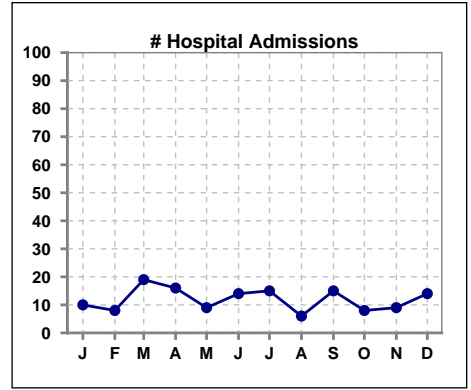
	Jan	Feb	Mar	Apr	May	Jun	Jul	Aug	Sep	Oct	Nov	Dec
# Patient	75	73	75						80	78	76	77
# Influenza	66	65	64						0	70	68	70
% Influenza	88%	89%	85%						0%	90%	89%	91%



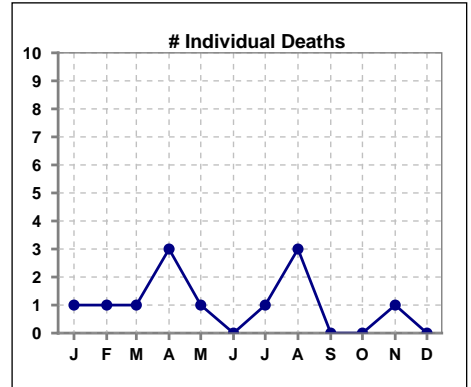
Methodology: a) All labs for 'Adequacy of Dialysis', 'Nutrition', 'Osteodystrophy', 'Anemia' and 'Diabetes' based on last value of month; b) BP's and #L processed are average of all values for month; c) Access data takes last access of month; d) Values for SGA and 'Infection Control' use most recent result.

VIII. Outcome measures

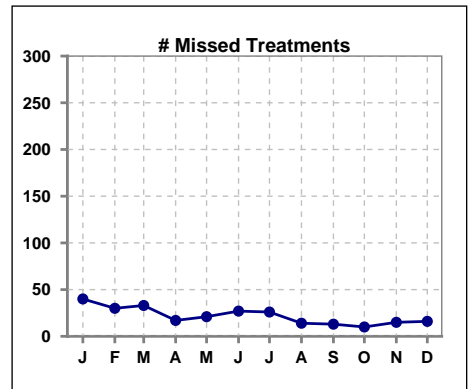
	Jan	Feb	Mar	Apr	May	Jun	Jul	Aug	Sep	Oct	Nov	Dec
# Patient	75	73	75	75	80	81	79	78	80	78	76	77
# Hospital Admissions	10	8	19	16	9	14	15	6	15	8	9	14



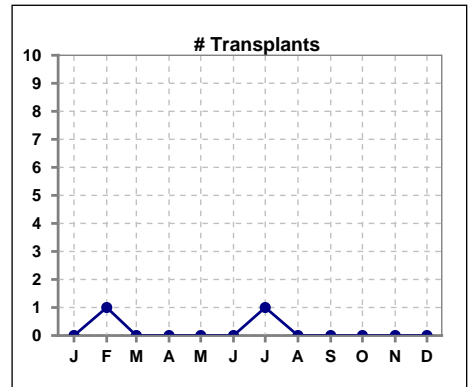
	Jan	Feb	Mar	Apr	May	Jun	Jul	Aug	Sep	Oct	Nov	Dec
# Patient	75	73	75	75	80	81	79	78	80	78	76	77
# Individual Deaths	1	1	1	3	1	0	1	3	0	0	1	0



	Jan	Feb	Mar	Apr	May	Jun	Jul	Aug	Sep	Oct	Nov	Dec
# Patient	75	73	75	75	80	81	79	78	80	78	76	77
# Missed Treatments	40	30	33	17	21	27	26	14	13	10	15	16



	Jan	Feb	Mar	Apr	May	Jun	Jul	Aug	Sep	Oct	Nov	Dec
# Patient	75	73	75	75	80	81	79	78	80	78	76	77
# Transplants	0	1	0	0	0	0	1	0	0	0	0	0



Methodology: a) All labs for 'Adequacy of Dialysis', 'Nutrition', 'Osteodystrophy', 'Anemia' and 'Diabetes' based on last value of month; b) BP's and #L processed are average of all values for month; c) Access data takes last access of month; d) Values for SGA and 'Infection Control' use most recent result.