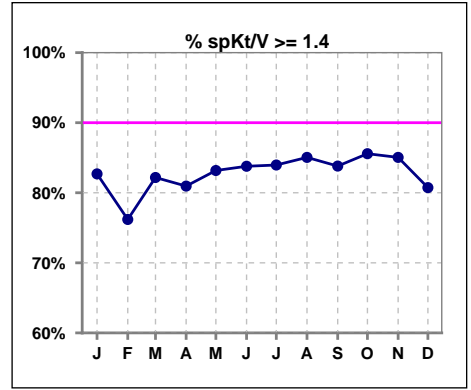
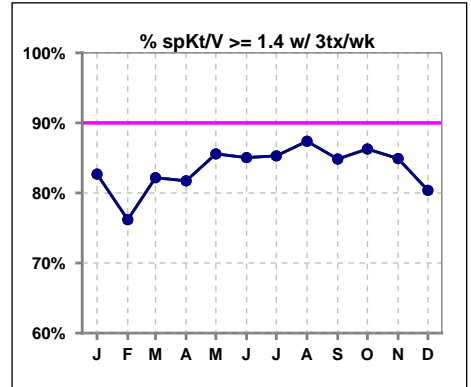


I. ADEQUACY OF DIALYSIS

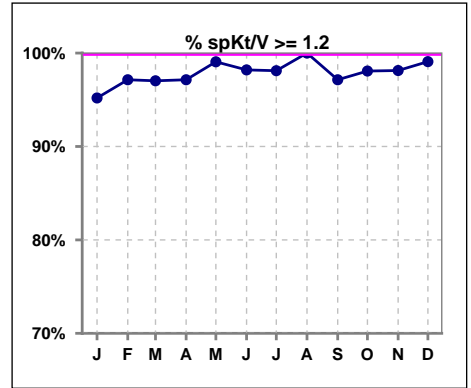
	Jan	Feb	Mar	Apr	May	Jun	Jul	Aug	Sep	Oct	Nov	Dec
# spKt/V	104	105	101	105	107	111	106	107	105	104	107	109
# spKt/V >= 1.4	86	80	83	85	89	93	89	91	88	89	91	88
Pop. Mean	1.70	1.66	1.70	1.67	1.70	1.68	1.67	1.69	1.68	1.69	1.70	1.68
Std. Deviation	0.34	0.33	0.36	0.30	0.30	0.34	0.30	0.31	0.30	0.33	0.31	0.31
% spKt/V >= 1.4	83%	76%	82%	81%	83%	84%	84%	85%	84%	86%	85%	81%



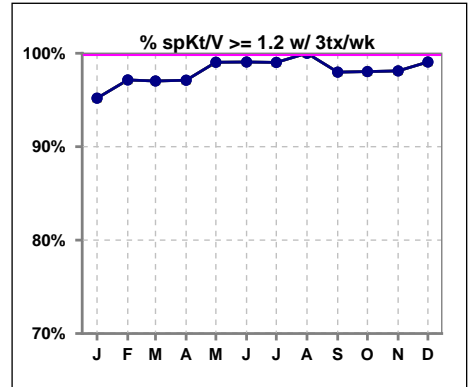
	Jan	Feb	Mar	Apr	May	Jun	Jul	Aug	Sep	Oct	Nov	Dec
# spKt/V w/ 3tx/wk	104	105	101	104	104	107	102	103	99	102	106	107
# spKt/V >= 1.4 w/3tx/wk	86	80	83	85	89	91	87	90	84	88	90	86
Pop. Mean	1.70	1.66	1.70	1.67	1.71	1.68	1.69	1.70	1.70	1.70	1.70	1.68
Std. Deviation	0.34	0.33	0.36	0.30	0.29	0.31	0.30	0.31	0.30	0.33	0.31	0.31
% >= 1.4 w/3tx/wk	83%	76%	82%	82%	86%	85%	85%	87%	85%	86%	85%	80%



	Jan	Feb	Mar	Apr	May	Jun	Jul	Aug	Sep	Oct	Nov	Dec
# spKt/V	104	105	101	105	107	111	106	107	105	104	107	109
# spKt/V >= 1.2	99	102	98	102	106	109	104	107	102	102	105	108
Pop. Mean	1.70	1.66	1.70	1.67	1.70	1.68	1.67	1.69	1.68	1.69	1.70	1.68
Std. Deviation	0.34	0.33	0.36	0.30	0.30	0.34	0.30	0.31	0.30	0.33	0.31	0.31
% spKt/V >= 1.2	95%	97%	97%	97%	99%	98%	98%	100%	97%	98%	98%	99%



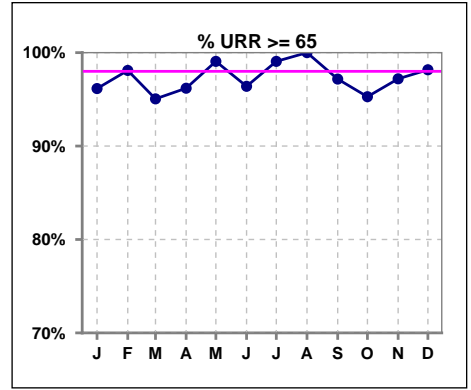
	Jan	Feb	Mar	Apr	May	Jun	Jul	Aug	Sep	Oct	Nov	Dec
# spKt/V w/ 3tx/wk	104	105	101	104	104	107	102	103	99	102	106	107
# spKt/V >= 1.2 w/3tx/wk	99	102	98	101	103	106	101	103	97	100	104	106
Pop. Mean	1.70	1.66	1.70	1.67	1.71	1.68	1.69	1.70	1.70	1.70	1.70	1.68
Std. Deviation	0.34	0.33	0.36	0.30	0.29	0.31	0.30	0.31	0.30	0.33	0.31	0.31
% >= 1.2 w/3tx/wk	95%	97%	97%	97%	99%	99%	99%	100%	98%	98%	98%	99%



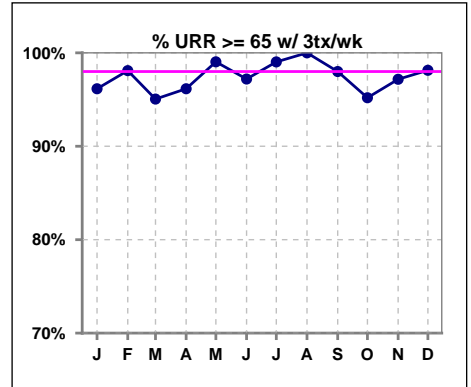
Methodology: a) All labs for 'Adequacy of Dialysis', 'Nutrition', 'Osteodystrophy', 'Anemia' and 'Diabetes' based on last value of month; b) BP's and #L processed are average of all values for month; c) Access data takes last access of month; d) Values for SGA and 'Infection Control' use most recent result.

I. ADEQUACY OF DIALYSIS - CONT.

	Jan	Feb	Mar	Apr	May	Jun	Jul	Aug	Sep	Oct	Nov	Dec
# URR	104	105	101	105	107	111	107	107	106	106	107	109
# URR >= 65	100	103	96	101	106	107	106	107	103	101	104	107
Pop. Mean	76	75	76	76	77	76	76	76	76	76	76	76
Std. Deviation	6.11	6.20	6.76	6.68	5.60	6.49	6.22	5.22	6.07	8.68	5.78	5.82
% URR >= 65	96%	98%	95%	96%	99%	96%	99%	100%	97%	95%	97%	98%



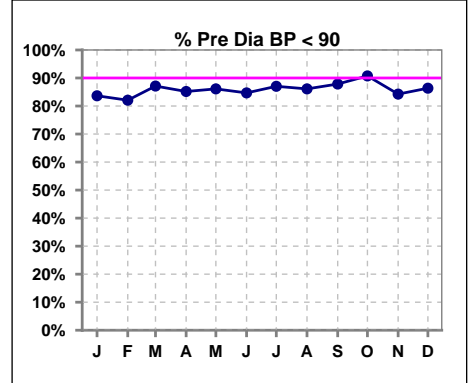
	Jan	Feb	Mar	Apr	May	Jun	Jul	Aug	Sep	Oct	Nov	Dec
# URR w/ 3tx/wk	104	105	101	104	104	107	103	103	100	104	106	107
# URR>=65 w/ 3tx/wk	100	103	96	100	103	104	102	103	98	99	103	105
Pop. Mean	76	75	76	76	77	76	76	77	77	76	77	76
Std. Deviation	6.11	6.20	6.76	6.66	5.44	5.76	6.19	5.15	5.99	8.72	5.80	5.88
% URR>=65 w/ 3tx/wk	96%	98%	95%	96%	99%	97%	99%	100%	98%	95%	97%	98%



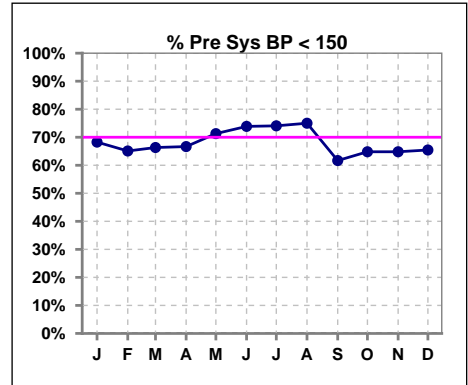
I. ADEQUACY OF DIALYSIS - CONT.

Blood Pressure Control (Pre)

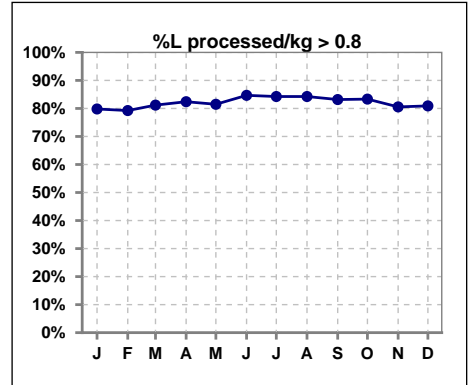
	Jan	Feb	Mar	Apr	May	Jun	Jul	Aug	Sep	Oct	Nov	Dec
# Pre Dia BP	104	106	101	108	108	111	108	108	107	108	108	110
# Pre Dia BP < 90	87	87	88	92	93	94	94	93	94	98	91	95
Pop. Mean	77	77	77	77	77	76	76	77	76	77	78	77
Std. Deviation	14.2	13.6	12.6	12.8	12.3	12.6	12.0	12.2	12.1	11.3	11.2	11.5
% Pre Dia BP < 90	84%	82%	87%	85%	86%	85%	87%	86%	88%	91%	84%	86%



	Jan	Feb	Mar	Apr	May	Jun	Jul	Aug	Sep	Oct	Nov	Dec
# Pre Sys BP	104	106	101	108	108	111	108	108	107	108	108	110
# Pre Sys BP < 150	71	69	67	72	77	82	80	81	66	70	70	72
Pop. Mean	142	142	141	141	139	139	140	140	143	142	143	142
Std. Deviation	22.2	21.6	21.1	21.0	20.2	19.9	18.5	18.6	19.9	19.8	18.8	20.0
%Pre Sys BP <150	68%	65%	66%	67%	71%	74%	74%	75%	62%	65%	65%	65%



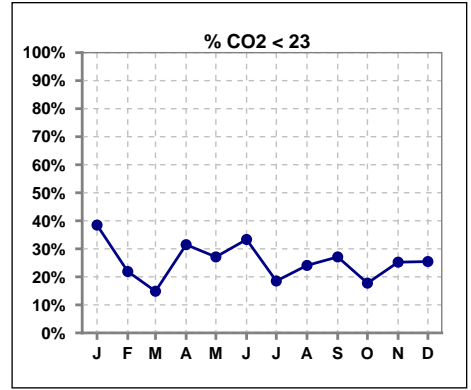
	Jan	Feb	Mar	Apr	May	Jun	Jul	Aug	Sep	Oct	Nov	Dec
# L processed/kg	104	106	101	108	108	111	108	108	107	108	108	110
# L processed/kg>0.8	83	84	82	89	88	94	91	91	89	90	87	89
Pop. Mean	1	1	1	1	1	1	1	1	1	1	1	1
Std. Deviation	0.3	0.3	0.3	0.3	0.3	0.3	0.3	0.3	0.3	0.3	0.3	0.3
% L processed/kg>0.8	80%	79%	81%	82%	81%	85%	84%	84%	83%	83%	81%	81%



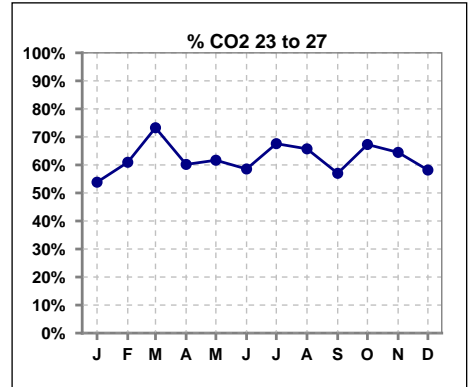
Methodology: a) All labs for 'Adequacy of Dialysis', 'Nutrition', 'Osteodystrophy', 'Anemia' and 'Diabetes' based on last value of month; b) BP's and #L processed are average of all values for month; c) Access data takes last access of month; d) Values for SGA and 'Infection Control' use most recent result.

I. ADEQUACY OF DIALYSIS - CONT.

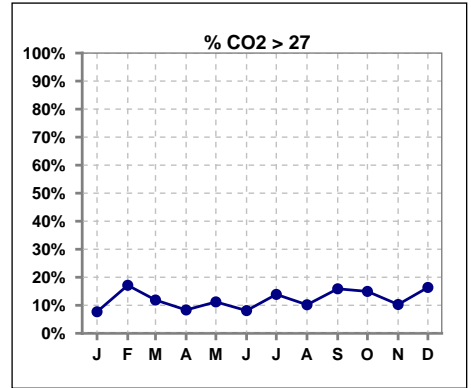
	Jan	Feb	Mar	Apr	May	Jun	Jul	Aug	Sep	Oct	Nov	Dec
# CO2	104	105	101	108	107	111	108	108	107	107	107	110
# CO2 < 23	40	23	15	34	29	37	20	26	29	19	27	28
Pop. Mean	23	24	25	24	24	24	25	24	25	25	24	25
Std. Deviation	2.94	3.33	2.37	2.71	2.70	2.52	2.67	2.68	3.11	2.89	2.65	3.00
% CO2 < 23	38%	22%	15%	31%	27%	33%	19%	24%	27%	18%	25%	25%



	Jan	Feb	Mar	Apr	May	Jun	Jul	Aug	Sep	Oct	Nov	Dec
# CO2	104	105	101	108	107	111	108	108	107	107	107	110
# CO2 23 to 27	56	64	74	65	66	65	73	71	61	72	69	64
Pop. Mean	23	24	25	24	24	24	25	24	25	25	24	25
Std. Deviation	2.94	3.33	2.37	2.71	2.70	2.52	2.67	2.68	3.11	2.89	2.65	3.00
% CO2 23 to 27	54%	61%	73%	60%	62%	59%	68%	66%	57%	67%	64%	58%



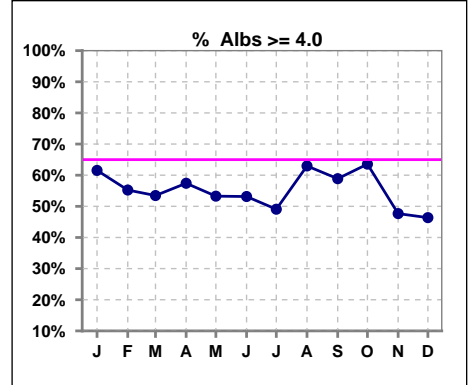
	Jan	Feb	Mar	Apr	May	Jun	Jul	Aug	Sep	Oct	Nov	Dec
# CO2	104	105	101	108	107	111	108	108	107	107	107	110
# CO2 > 27	8	18	12	9	12	9	15	11	17	16	11	18
Pop. Mean	23	24	25	24	24	24	25	24	25	25	24	25
Std. Deviation	2.94	3.33	2.37	2.71	2.70	2.52	2.67	2.68	3.11	2.89	2.65	3.00
% CO2 > 27	8%	17%	12%	8%	11%	8%	14%	10%	16%	15%	10%	16%



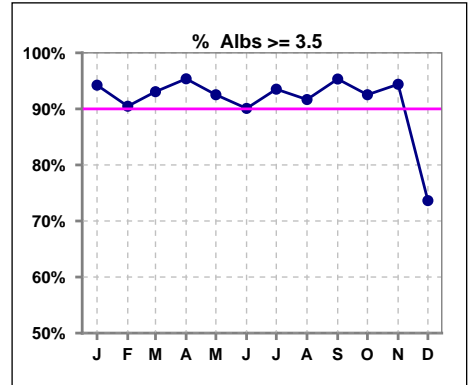
*Albumin values use BCG method - as of July 2001

II. NUTRITION

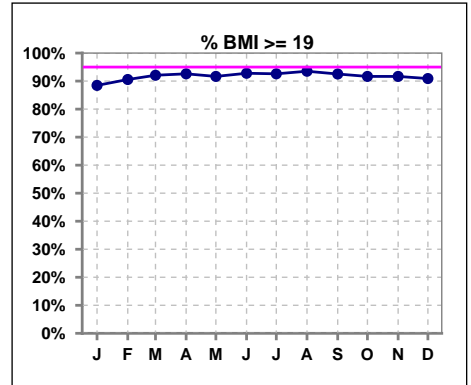
	Jan	Feb	Mar	Apr	May	Jun	Jul	Aug	Sep	Oct	Nov	Dec
# Albumin	104	105	101	108	107	111	108	108	107	107	107	110
# Albumin >= 4.0	64	58	54	62	57	59	53	68	63	68	51	51
Pop. Mean	4.0	3.9	4.0	4.0	3.9	3.9	3.9	4.0	4.0	4.0	3.9	3.7
Std. Deviation	0.36	0.35	0.31	0.33	0.30	0.34	0.33	0.35	0.33	0.36	0.34	0.51
% Alb >= 4.0	62%	55%	53%	57%	53%	53%	49%	63%	59%	64%	48%	46%



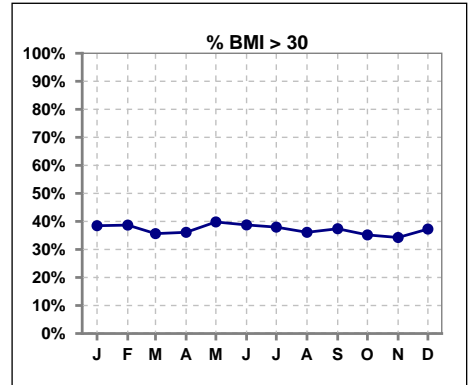
	Jan	Feb	Mar	Apr	May	Jun	Jul	Aug	Sep	Oct	Nov	Dec
# Albumin	104	105	101	108	107	111	108	108	107	107	107	110
# Albumin >= 3.5	98	95	94	103	99	100	101	99	102	99	101	81
Pop. Mean	4.0	3.9	4.0	4.0	3.9	3.9	3.9	4.0	4.0	4.0	3.9	3.7
Std. Deviation	0.36	0.35	0.31	0.33	0.30	0.34	0.33	0.35	0.33	0.36	0.34	0.51
% Alb >= 3.5	94%	90%	93%	95%	93%	90%	94%	92%	95%	93%	94%	74%



	Jan	Feb	Mar	Apr	May	Jun	Jul	Aug	Sep	Oct	Nov	Dec
# BMI	104	106	101	108	108	111	108	108	107	108	108	110
# BMI >= 19	92	96	93	100	99	103	100	101	99	99	99	100
Pop. Mean	28	28	28	28	28	28	28	28	28	28	28	29
Std. Deviation	7.9	7.9	7.9	7.8	7.7	7.8	7.8	7.8	7.8	7.9	7.8	7.7
% BMI >= 19	88%	91%	92%	93%	92%	93%	93%	94%	93%	92%	92%	91%



	Jan	Feb	Mar	Apr	May	Jun	Jul	Aug	Sep	Oct	Nov	Dec
# BMI	104	106	101	108	108	111	108	108	107	108	108	110
# BMI > 30	40	41	36	39	43	43	41	39	40	38	37	41
Pop. Mean	28	28	28	28	28	28	28	28	28	28	28	29
Std. Deviation	7.9	7.9	7.9	7.8	7.7	7.8	7.8	7.8	7.8	7.9	7.8	7.7
% BMI > 30	38%	39%	36%	36%	40%	39%	38%	36%	37%	35%	34%	37%

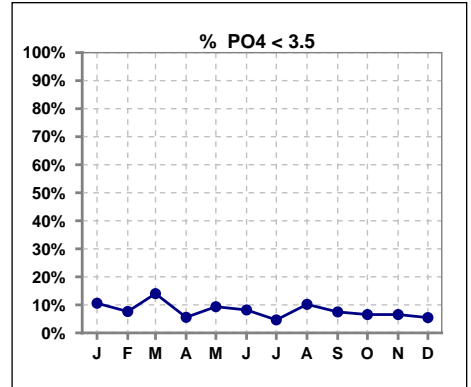


Methodology: a) All labs for 'Adequacy of Dialysis', 'Nutrition', 'Osteodystrophy', 'Anemia' and 'Diabetes' based on last value of month; b) BP's and #L processed are average of all values for month; c) Access data takes last access of month; d) Values for SGA and 'Infection Control' use most recent result.

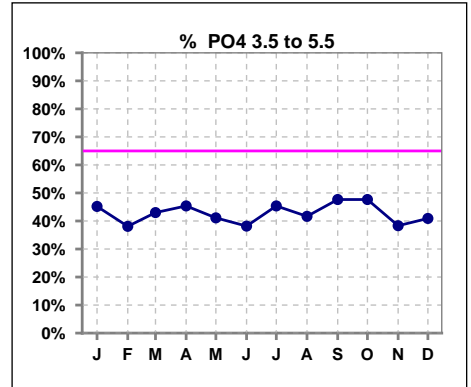
Lab methodology for PTH changed January 2012

III. OSTEODYSTROPHY

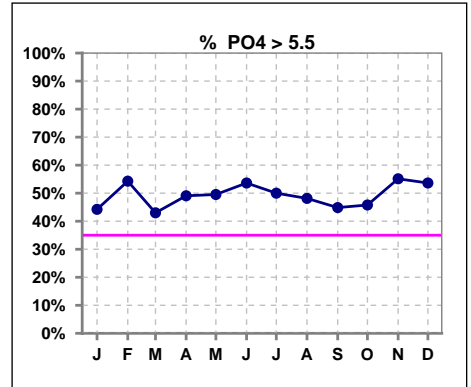
	Jan	Feb	Mar	Apr	May	Jun	Jul	Aug	Sep	Oct	Nov	Dec
# PO4	104	105	100	108	107	110	108	108	107	107	107	110
# PO4 < 3.5	11	8	14	6	10	9	5	11	8	7	7	6
Pop. Mean	5.4	5.8	5.5	6.0	5.9	5.8	5.9	5.7	5.8	5.9	6.0	5.9
Std. Deviation	1.62	1.92	1.84	1.87	2.05	2.06	1.92	1.91	2.04	2.10	1.90	1.91
% PO4 < 3.5	11%	8%	14%	6%	9%	8%	5%	10%	7%	7%	7%	5%



	Jan	Feb	Mar	Apr	May	Jun	Jul	Aug	Sep	Oct	Nov	Dec
# PO4	104	105	100	108	107	110	108	108	107	107	107	110
# PO4 3.5 to 5.5	47	40	43	49	44	42	49	45	51	51	41	45
Pop. Mean	5.4	5.8	5.5	6.0	5.9	5.8	5.9	5.7	5.8	5.9	6.0	5.9
Std. Deviation	1.62	1.92	1.84	1.87	2.05	2.06	1.92	1.91	2.04	2.10	1.90	1.91
% PO4 3.5 to 5.5	45%	38%	43%	45%	41%	38%	45%	42%	48%	48%	38%	41%



	Jan	Feb	Mar	Apr	May	Jun	Jul	Aug	Sep	Oct	Nov	Dec
# PO4	104	105	100	108	107	110	108	108	107	107	107	110
# PO4 > 5.5	46	57	43	53	53	59	54	52	48	49	59	59
Pop. Mean	5.4	5.8	5.5	6.0	5.9	5.8	5.9	5.7	5.8	5.9	6.0	5.9
Std. Deviation	1.62	1.92	1.84	1.87	2.05	2.06	1.92	1.91	2.04	2.10	1.90	1.91
% PO4 > 5.5	44%	54%	43%	49%	50%	54%	50%	48%	45%	46%	55%	54%

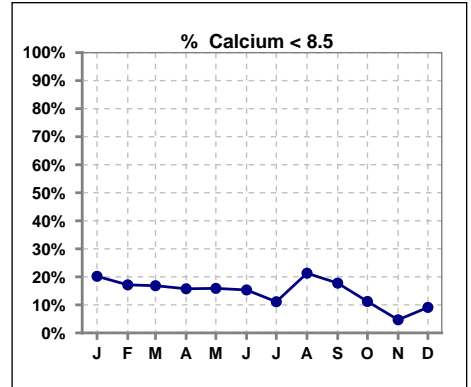


Methodology: a) All labs for 'Adequacy of Dialysis', 'Nutrition', 'Osteodystrophy', 'Anemia' and 'Diabetes' based on last value of month; b) BP's and #L processed are average of all values for month; c) Access data takes last access of month; d) Values for SGA and 'Infection Control' use most recent result.

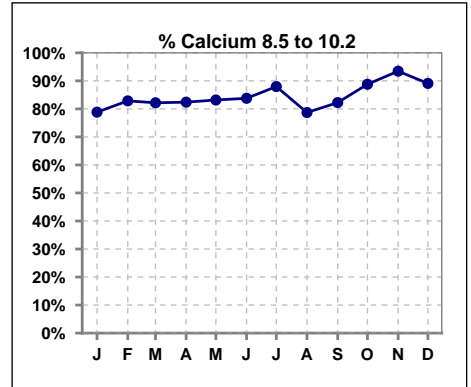
Lab methodology for PTH changed January 2012

III. OSTEODYSTROPHY - CONT.

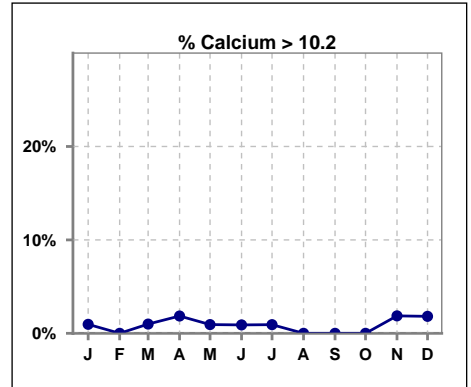
	Jan	Feb	Mar	Apr	May	Jun	Jul	Aug	Sep	Oct	Nov	Dec
# Calcium	104	105	101	108	107	111	108	108	107	107	107	110
# Calcium < 8.5	21	18	17	17	17	17	12	23	19	12	5	10
Pop. Mean	9.0	8.9	9.0	9.1	9.1	9.2	9.2	9.0	9.0	9.2	9.4	9.3
Std. Deviation	0.74	0.66	0.77	0.73	0.69	0.72	0.69	0.70	0.65	0.69	0.60	0.59
% Calcium < 8.5	20%	17%	17%	16%	16%	15%	11%	21%	18%	11%	5%	9%



	Jan	Feb	Mar	Apr	May	Jun	Jul	Aug	Sep	Oct	Nov	Dec
# Calcium	104	105	101	108	107	111	108	108	107	107	107	110
# Calcium 8.5 to 10.2	82	87	83	89	89	93	95	85	88	95	100	98
Pop. Mean	9.0	8.9	9.0	9.1	9.1	9.2	9.2	9.0	9.0	9.2	9.4	9.3
Std. Deviation	0.74	0.66	0.77	0.73	0.69	0.72	0.69	0.70	0.65	0.69	0.60	0.59
% Calcium 8.5 to 10.2	79%	83%	82%	82%	83%	84%	88%	79%	82%	89%	93%	89%



	Jan	Feb	Mar	Apr	May	Jun	Jul	Aug	Sep	Oct	Nov	Dec
# Calcium	104	105	101	108	107	111	108	108	107	107	107	110
# Calcium > 10.2	1	0	1	2	1	1	1	0	0	0	2	2
Pop. Mean	9.0	8.9	9.0	9.1	9.1	9.2	9.2	9.0	9.0	9.2	9.4	9.3
Std. Deviation	0.74	0.66	0.77	0.73	0.69	0.72	0.69	0.70	0.65	0.69	0.60	0.59
% Calcium > 10.2	1%	0%	1%	2%	1%	1%	1%	0%	0%	0%	2%	2%

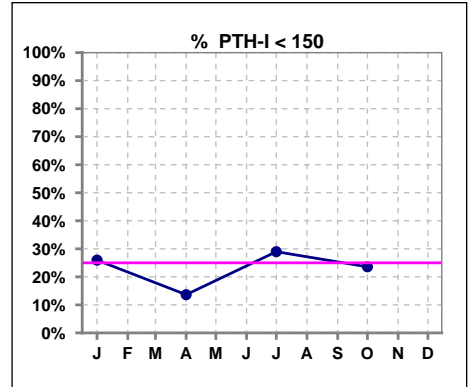


Methodology: a) All labs for 'Adequacy of Dialysis', 'Nutrition', 'Osteodystrophy', 'Anemia' and 'Diabetes' based on last value of month; b) BP's and #L processed are average of all values for month; c) Access data takes last access of month; d) Values for SGA and 'Infection Control' use most recent result.

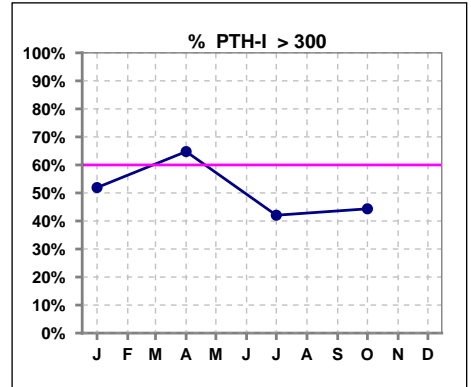
Lab methodology for PTH changed January 2012

III. OSTEODYSTROPHY - CONT.

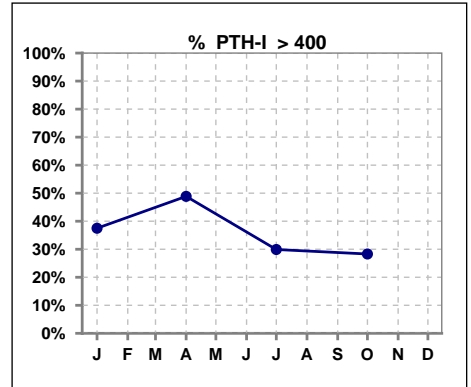
	Jan	Feb	Mar	Apr	May	Jun	Jul	Aug	Sep	Oct	Nov	Dec
# PTH-I	104			88			107			106		
# PTH-I < 150	27			12			31			25		
Pop. Mean	364			446			331			339		
Std. Deviation	267			322			293			377		
% PTH-I < 150	26%			14%			29%			24%		



	Jan	Feb	Mar	Apr	May	Jun	Jul	Aug	Sep	Oct	Nov	Dec
# PTH-I	104			88			107			106		
# PTH-I > 300	54			57			45			47		
Pop. Mean	364			446			331			339		
Std. Deviation	267			322			293			377		
% PTH-I > 300	52%			65%			42%			44%		



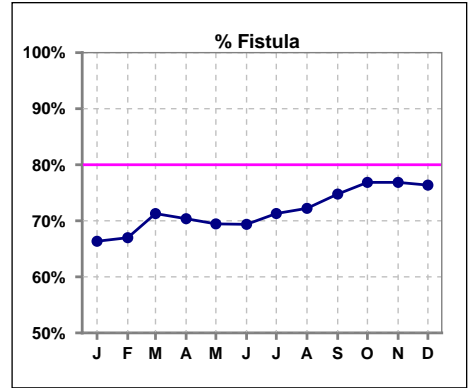
	Jan	Feb	Mar	Apr	May	Jun	Jul	Aug	Sep	Oct	Nov	Dec
# PTH-I	104			88			107			106		
# PTH-I > 400	39			43			32			30		
Pop. Mean	364			446			331			339		
Std. Deviation	267			322			293			377		
% PTH-I > 400	38%			49%			30%			28%		



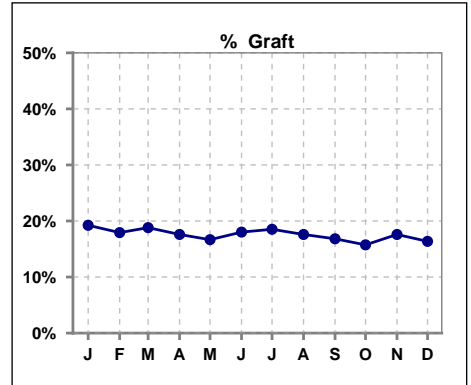
Methodology: a) All labs for 'Adequacy of Dialysis', 'Nutrition', 'Osteodystrophy', 'Anemia' and 'Diabetes' based on last value of month; b) BP's and #L processed are average of all values for month; c) Access data takes last access of month; d) Values for SGA and 'Infection Control' use most recent result.

IV. ACCESS

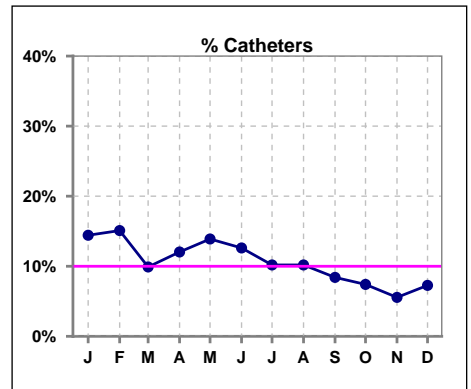
	Jan	Feb	Mar	Apr	May	Jun	Jul	Aug	Sep	Oct	Nov	Dec
# Access	104	106	101	108	108	111	108	108	107	108	108	110
# Fistula	69	71	72	76	75	77	77	78	80	83	83	84
% Fistula	66%	67%	71%	70%	69%	69%	71%	72%	75%	77%	77%	76%



	Jan	Feb	Mar	Apr	May	Jun	Jul	Aug	Sep	Oct	Nov	Dec
# Access	104	106	101	108	108	111	108	108	107	108	108	110
# Graft	20	19	19	19	18	20	20	19	18	17	19	18
% Graft	19%	18%	19%	18%	17%	18%	19%	18%	17%	16%	18%	16%



	Jan	Feb	Mar	Apr	May	Jun	Jul	Aug	Sep	Oct	Nov	Dec
# Access	104	106	101	108	108	111	108	108	107	108	108	110
# Catheters	15	16	10	13	15	14	11	11	9	8	6	8
% Catheters	14%	15%	10%	12%	14%	13%	10%	10%	8%	7%	6%	7%



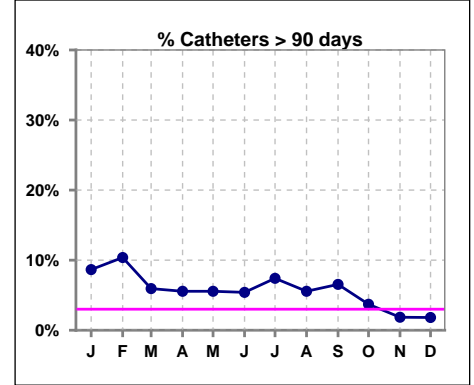
Methodology: a) All labs for 'Adequacy of Dialysis', 'Nutrition', 'Osteodystrophy', 'Anemia' and 'Diabetes' based on last value of month; b) BP's and #L processed are average of all values for month; c) Access data takes last access of month; d) Values for SGA and 'Infection Control' use most recent result.

IV. ACCESS - CONT.

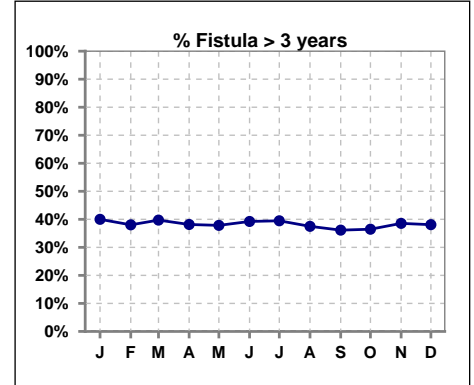
Catheters > 90 days

	Jan	Feb	Mar	Apr	May	Jun	Jul	Aug	Sep	Oct	Nov	Dec
# Access	104	106	101	108	108	111	108	108	107	108	108	110
# Catheters	9	11	6	6	6	6	8	6	7	4	2	2
% Catheters	9%	10%	6%	6%	6%	5%	7%	6%	7%	4%	2%	2%

Definition: Catheter in use on last treatment of the month



	Jan	Feb	Mar	Apr	May	Jun	Jul	Aug	Sep	Oct	Nov	Dec
# Fistula	70	71	73	76	74	79	76	80	83	85	83	84
# Fistula > 3 yrs	28	27	29	29	28	31	30	30	30	31	32	32
% Fistula > 3 yrs	40%	38%	40%	38%	38%	39%	39%	38%	36%	36%	39%	38%



Methodology: a) All labs for 'Adequacy of Dialysis', 'Nutrition', 'Osteodystrophy', 'Anemia' and 'Diabetes' based on last value of month; b) BP's and #L processed are average of all values for month; c) Access data takes last access of month; d) Values for SGA and 'Infection Control' use most recent result.

All rates are calculated per 100 patient-month

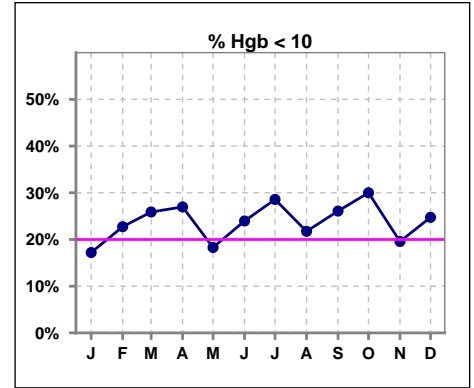
(number of infections/number of accesses x100)

KCC	Total Fistula	Fistula Infected	Fistula ARB Rate	National Rate	Total Grafts	Graft Infected	Graft ARB Rate	National Rate	Total Cath	Cath Infected	Cath ARB Rate	National Rate	Total Accesses	Total Access Infected	All ARB Rate Per 100 pt- Months	National Rate
2014-2015 Month																
Dec	70	0	0.00	0.23	22	0	0.00	0.51	14	0	0.00	2.55	106	0	0.00	
Jan	69	0	0.00	0.23	19	0	0.00	0.51	12	0	0.00	2.55	100	0	0.00	
Feb	71	0	0.00	0.23	20	0	0.00	0.51	11	0	0.00	2.55	102	0	0.00	
Mar	70	0	0.00	0.23	21	0	0.00	0.51	13	0	0.00	2.55	104	0	0.00	
April	73	0	0.00	0.23	20	0	0.00	0.51	8	0	0.00	2.55	101	0	0.00	
May	73	0	0.00	0.23	19	0	0.00	0.51	15	0	0.00	2.55	107	0	0.00	
June	75	0	0.00	0.23	19	0	0.00	0.51	14	0	0.00	2.55	108	0	0.00	
July	76	0	0.00	0.23	21	0	0.00	0.51	12	0	0.00	2.55	109	0	0.00	
Aug	77	0	0.00	0.23	21	0	0.00	0.51	7	0	0.00	2.55	105	0	0.00	
Sept	78	0	0.00	0.23	21	0	0.00	0.51	10	0	0.00	2.55	109	0	0.00	
Oct	78	0	0.00	0.23	19	0	0.00	0.51	6	0	0.00	2.55	103	0	0.00	
Nov	82	0	0.00	0.23	19	0	0.00	0.51	13	0	0.00	2.55	114	0	0.00	
Annual Total:	654	0	0.00	0.23	182	0	0.00	0.51	106	0	0.00	2.55	942	0	0.00	0.88

V. ANEMIA

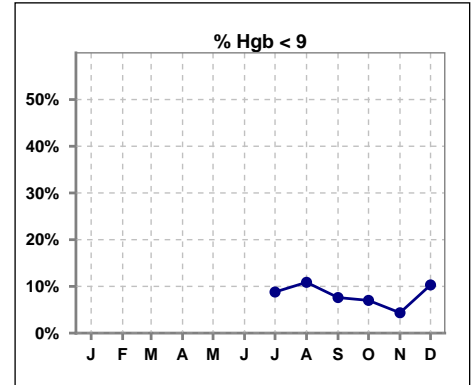
	Jan	Feb	Mar	Apr	May	Jun	Jul	Aug	Sep	Oct	Nov	Dec
# Hgb	93	88	85	89	93	96	91	92	92	100	92	97
# Hgb < 10	16	20	22	24	17	23	26	20	24	30	18	24
Pop. Mean	10.8	10.8	10.5	10.7	10.8	10.6	10.4	10.6	10.5	10.5	10.7	10.5
Std. Deviation	1.0	1.0	1.0	1.1	1.0	1.0	1.2	1.2	1.1	1.1	1.0	1.0
% Hgb < 10	17%	23%	26%	27%	18%	24%	29%	22%	26%	30%	20%	25%

Note: Excludes patients who received no ESA in month.



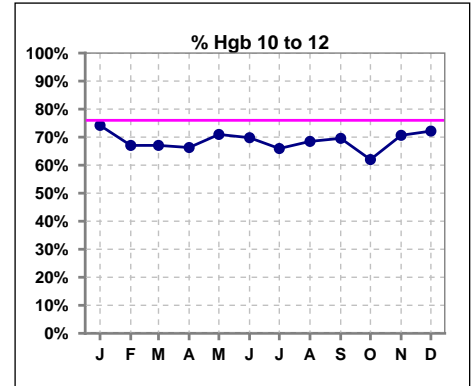
	Jan	Feb	Mar	Apr	May	Jun	Jul	Aug	Sep	Oct	Nov	Dec
# Hgb							91	92	92	100	92	97
# Hgb < 9							8	10	7	7	4	10
Pop. Mean							10.4	10.6	10.5	10.5	10.7	10.5
Std. Deviation							1.2	1.2	1.1	1.1	1.0	1.0
% Hgb < 9							9%	11%	8%	7%	4%	10%

Note: Excludes patients who received no ESA in month.



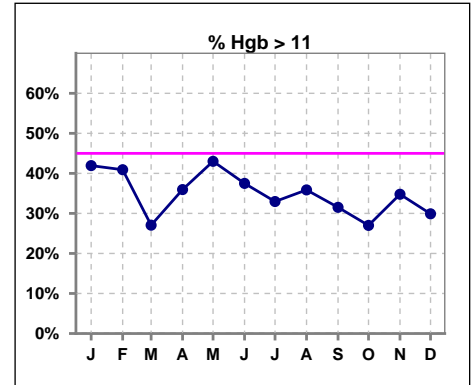
	Jan	Feb	Mar	Apr	May	Jun	Jul	Aug	Sep	Oct	Nov	Dec
# Hgb	93	88	85	89	93	96	91	92	92	100	92	97
# Hgb 10 to 12	69	59	57	59	66	67	60	63	64	62	65	70
Pop. Mean	10.8	10.8	10.5	10.7	10.8	10.6	10.4	10.6	10.5	10.5	10.7	10.5
Std. Deviation	1.0	1.0	1.0	1.1	1.0	1.0	1.2	1.2	1.1	1.1	1.0	1.0
% Hgb 10 to 12	74%	67%	67%	66%	71%	70%	66%	68%	70%	62%	71%	72%

Note: Excludes patients who received no ESA in month.



	Jan	Feb	Mar	Apr	May	Jun	Jul	Aug	Sep	Oct	Nov	Dec
# Hgb	93	88	85	89	93	96	91	92	92	100	92	97
# Hgb > 11	39	36	23	32	40	36	30	33	29	27	32	29
Pop. Mean	10.8	10.8	10.5	10.7	10.8	10.6	10.4	10.6	10.5	10.5	10.7	10.5
Std. Deviation	1.0	1.0	1.0	1.1	1.0	1.0	1.2	1.2	1.1	1.1	1.0	1.0
% Hgb > 11	42%	41%	27%	36%	43%	38%	33%	36%	32%	27%	35%	30%

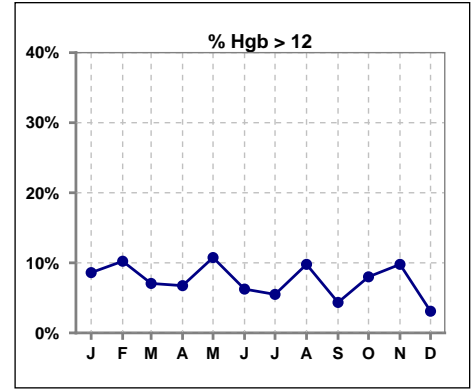
Note: Excludes patients who received no ESA in month.



V. ANEMIA - CONT.

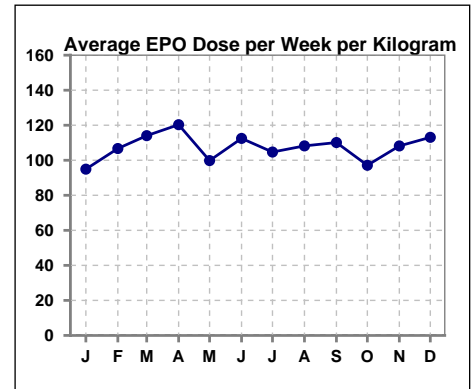
	Jan	Feb	Mar	Apr	May	Jun	Jul	Aug	Sep	Oct	Nov	Dec
# Hgb	93	88	85	89	93	96	91	92	92	100	92	97
# Hgb > 12	8	9	6	6	10	6	5	9	4	8	9	3
Pop. Mean	10.8	10.8	10.5	10.7	10.8	10.6	10.4	10.6	10.5	10.5	10.7	10.5
Std. Deviation	1.0	1.0	1.0	1.1	1.0	1.0	1.2	1.2	1.1	1.1	1.0	1.0
% Hgb > 12	9%	10%	7%	7%	11%	6%	5%	10%	4%	8%	10%	3%

Note: Excludes patients who received no ESA in month.



Average EPO Dose per Week per Kilogram

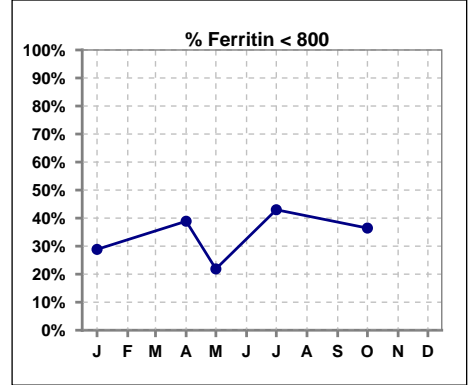
	Jan	Feb	Mar	Apr	May	Jun	Jul	Aug	Sep	Oct	Nov	Dec
# Average EPO	94.9	106.7	114.1	120.3	99.8	112.5	104.7	108.2	110.1	97.1	108.2	113.1



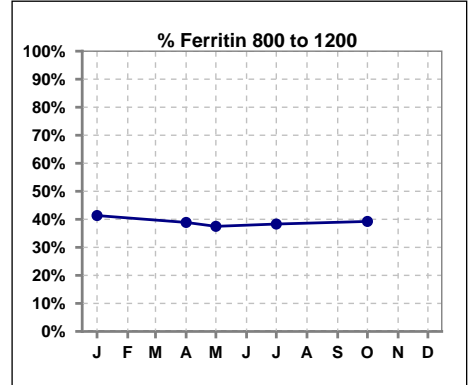
V. ANEMIA - CONT.

Iron Profile

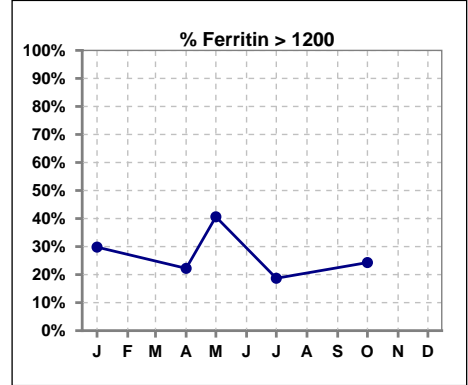
	Jan	Feb	Mar	Apr	May	Jun	Jul	Aug	Sep	Oct	Nov	Dec
# Ferritin	104			108	32		107			107		
# Ferritin < 800	30			42	7		46			39		
Pop. Mean	1032			926	1015		896			980		
Std. Deviation	436			510	398		445			465		
% Ferritin < 800	29%			39%	22%		43%			36%		



	Jan	Feb	Mar	Apr	May	Jun	Jul	Aug	Sep	Oct	Nov	Dec
# Ferritin	104			108	32		107			107		
# Ferritin 800 to 1200	43			42	12		41			42		
Pop. Mean	1032			926	1015		896			980		
Std. Deviation	436			510	398		445			465		
% Ferritin 800 to 1200	41%			39%	38%		38%			39%		



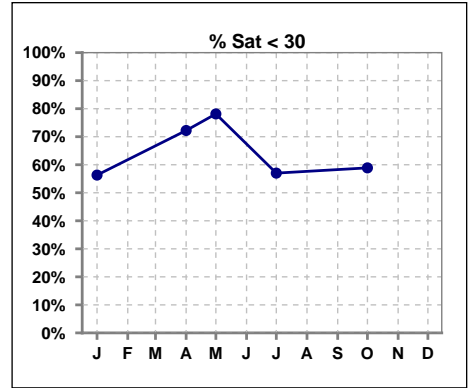
	Jan	Feb	Mar	Apr	May	Jun	Jul	Aug	Sep	Oct	Nov	Dec
# Ferritin	104			108	32		107			107		
# Ferritin > 1200	31			24	13		20			26		
Pop. Mean	1032			926	1015		896			980		
Std. Deviation	436			510	398		445			465		
% Ferritin > 1200	30%			22%	41%		19%			24%		



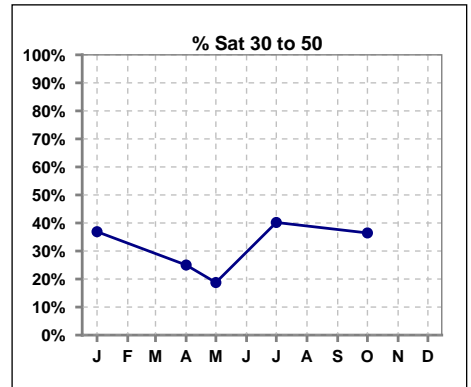
Methodology: a) All labs for 'Adequacy of Dialysis', 'Nutrition', 'Osteodystrophy', 'Anemia' and 'Diabetes' based on last value of month; b) BP's and #L processed are average of all values for month; c) Access data takes last access of month; d) Values for SGA and 'Infection Control' use most recent result.

V. ANEMIA - CONT.

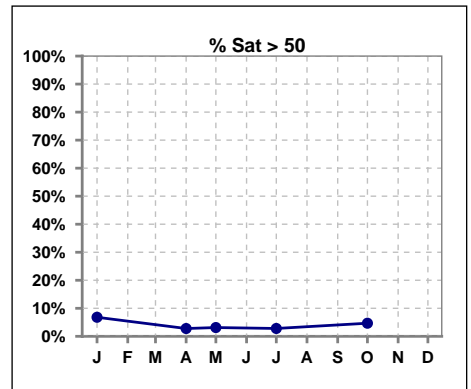
	Jan	Feb	Mar	Apr	May	Jun	Jul	Aug	Sep	Oct	Nov	Dec
# % Sat	103			108	32		107			107		
# % Sat < 30	58			78	25		61			63		
Pop. Mean	30			26	24		28			28		
Std. Deviation	14			13	11		11			11		
% % Sat < 30	56%			72%	78%		57%			59%		



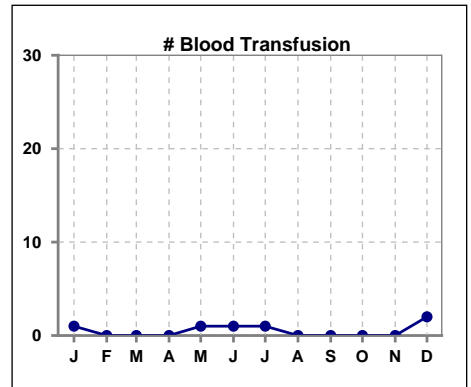
	Jan	Feb	Mar	Apr	May	Jun	Jul	Aug	Sep	Oct	Nov	Dec
# % Sat	103			108	32		107			107		
# % Sat 30 to 50	38			27	6		43			39		
Pop. Mean	30			26	24		28			28		
Std. Deviation	14			13	11		11			11		
% % Sat 30 to 50	37%			25%	19%		40%			36%		



	Jan	Feb	Mar	Apr	May	Jun	Jul	Aug	Sep	Oct	Nov	Dec
# % Sat	103			108	32		107			107		
# % Sat > 50	7			3	1		3			5		
Pop. Mean	30			26	24		28			28		
Std. Deviation	14			13	11		11			11		
% % Sat > 50	7%			3%	3%		3%			5%		



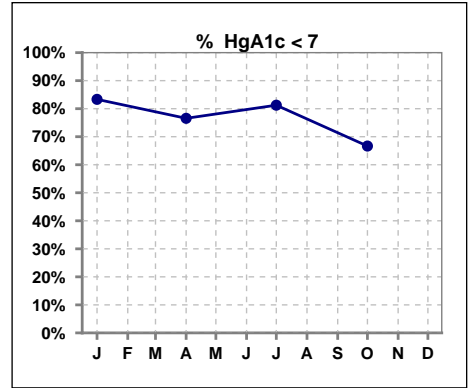
	Jan	Feb	Mar	Apr	May	Jun	Jul	Aug	Sep	Oct	Nov	Dec
# Patient	105	106	101	108	108	111	108	108	108	108	109	110
# Blood Transfusion	1	0	0	0	1	1	1	0	0	0	0	2



Methodology: a) All labs for 'Adequacy of Dialysis', 'Nutrition', 'Osteodystrophy', 'Anemia' and 'Diabetes' based on last value of month; b) BP's and #L processed are average of all values for month; c) Access data takes last access of month; d) Values for SGA and 'Infection Control' use most recent result.

VI. Diabetes

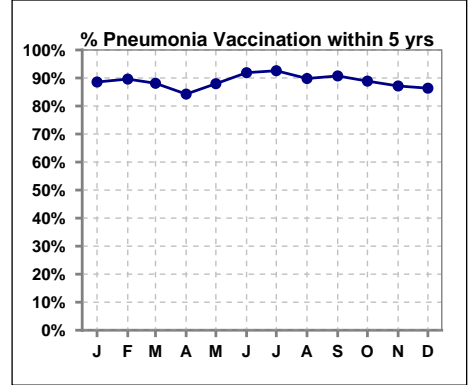
	Jan	Feb	Mar	Apr	May	Jun	Jul	Aug	Sep	Oct	Nov	Dec
# HgA1c	48			64			64			54		
# HgA1c < 7	40			49			52			36		
Pop. Mean	6.1			6.3			6.3			6.6		
Std. Deviation	1.03			1.17			1.04			1.22		
% HgA1c < 7	83%			77%			81%			67%		



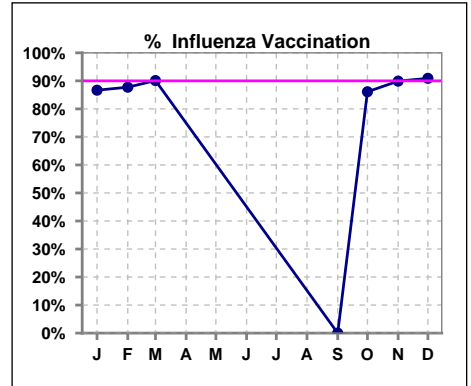
VII. Infection Control

Pneumonia vaccination within the past five years

	Jan	Feb	Mar	Apr	May	Jun	Jul	Aug	Sep	Oct	Nov	Dec
# Patient	105	106	101	108	108	111	108	108	108	108	109	110
# Pneumonia	93	95	89	91	95	102	100	97	98	96	95	95
% Pneumonia	89%	90%	88%	84%	88%	92%	93%	90%	91%	89%	87%	86%



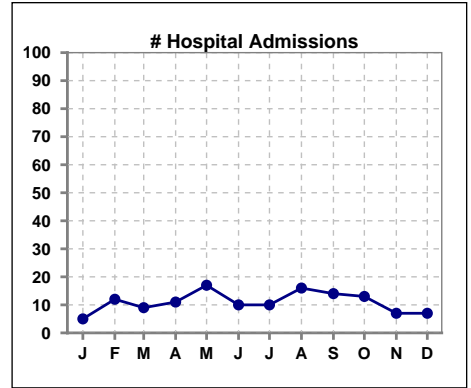
	Jan	Feb	Mar	Apr	May	Jun	Jul	Aug	Sep	Oct	Nov	Dec
# Patient	105	106	101						108	108	109	110
# Influenza	91	93	91						0	93	98	100
% Influenza	87%	88%	90%						0%	86%	90%	91%



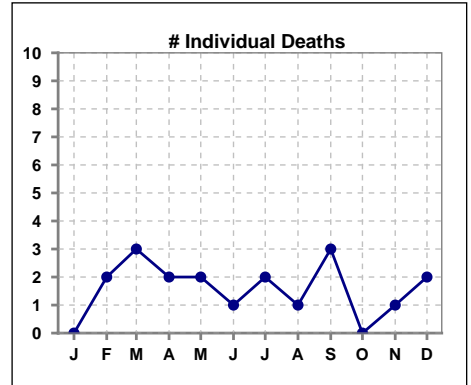
Methodology: a) All labs for 'Adequacy of Dialysis', 'Nutrition', 'Osteodystrophy', 'Anemia' and 'Diabetes' based on last value of month; b) BP's and #L processed are average of all values for month; c) Access data takes last access of month; d) Values for SGA and 'Infection Control' use most recent result.

VIII. Outcome measures

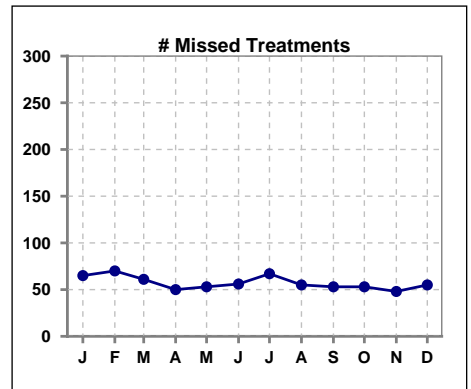
	Jan	Feb	Mar	Apr	May	Jun	Jul	Aug	Sep	Oct	Nov	Dec
# Patient	105	106	101	108	108	111	108	108	108	108	109	110
# Hospital Admissions	5	12	9	11	17	10	10	16	14	13	7	7



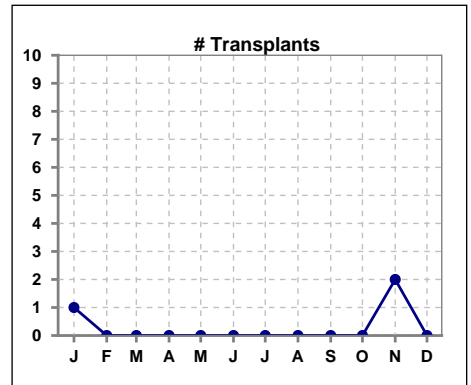
	Jan	Feb	Mar	Apr	May	Jun	Jul	Aug	Sep	Oct	Nov	Dec
# Patient	105	106	101	108	108	111	108	108	108	108	109	110
# Individual Deaths	0	2	3	2	2	1	2	1	3	0	1	2



	Jan	Feb	Mar	Apr	May	Jun	Jul	Aug	Sep	Oct	Nov	Dec
# Patient	105	106	101	108	108	111	108	108	108	108	109	110
# Missed Treatments	65	70	61	50	53	56	67	55	53	53	48	55



	Jan	Feb	Mar	Apr	May	Jun	Jul	Aug	Sep	Oct	Nov	Dec
# Patient	105	106	101	108	108	111	108	108	108	108	109	110
# Transplants	1	0	0	0	0	0	0	0	0	0	2	0



Methodology: a) All labs for 'Adequacy of Dialysis', 'Nutrition', 'Osteodystrophy', 'Anemia' and 'Diabetes' based on last value of month; b) BP's and #L processed are average of all values for month; c) Access data takes last access of month; d) Values for SGA and 'Infection Control' use most recent result.