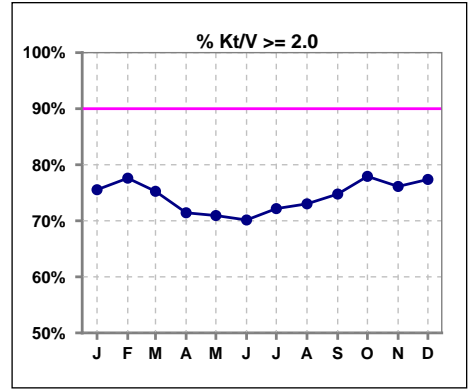
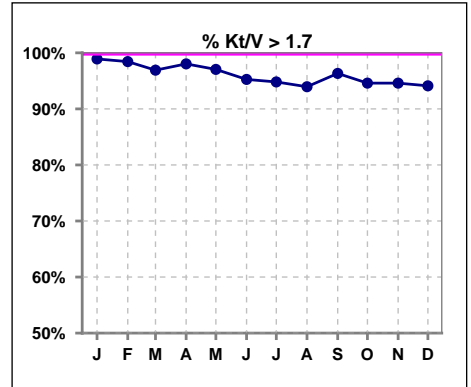


I. ADEQUACY OF DIALYSIS

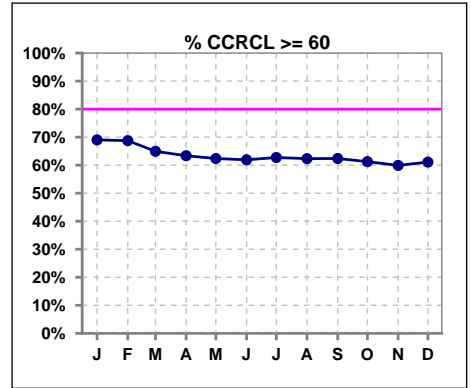
	Jan	Feb	Mar	Apr	May	Jun	Jul	Aug	Sep	Oct	Nov	Dec
# Kt/V - CA/CC PD	184	192	194	203	203	211	212	215	218	222	222	221
# Kt/V >= 2.0	139	149	146	145	144	148	153	157	163	173	169	171
Pop. Mean	2.29	2.29	2.29	2.30	2.32	2.28	2.31	2.30	2.30	2.33	2.33	2.34
Std. Deviation	0.42	0.43	0.50	0.55	0.55	0.50	0.50	0.48	0.47	0.48	0.48	0.50
% Kt/V >= 2.0	76%	78%	75%	71%	71%	70%	72%	73%	75%	78%	76%	77%



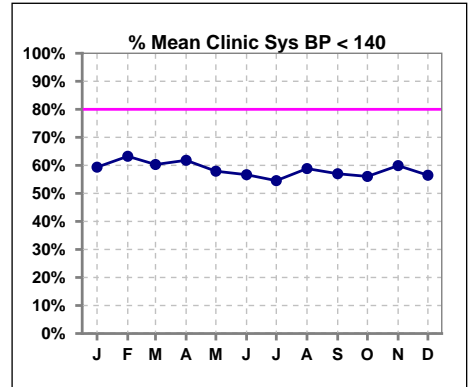
	Jan	Feb	Mar	Apr	May	Jun	Jul	Aug	Sep	Oct	Nov	Dec
# Kt/V - CA/CC PD	184	192	194	203	203	211	212	215	218	222	222	221
# Kt/V >= 1.7	182	189	188	199	197	201	201	202	210	210	210	208
Pop. Mean	2.29	2.29	2.29	2.30	2.32	2.28	2.31	2.30	2.30	2.33	2.33	2.34
Std. Deviation	0.42	0.43	0.50	0.55	0.55	0.50	0.50	0.48	0.47	0.48	0.48	0.50
% Kt/V >= 1.7	99%	98%	97%	98%	97%	95%	95%	94%	96%	95%	95%	94%



	Jan	Feb	Mar	Apr	May	Jun	Jul	Aug	Sep	Oct	Nov	Dec
# CRCL CA/CC PD	184	192	194	202	202	210	212	215	218	222	222	221
# CCRCL >= 60	127	132	126	128	126	130	133	134	136	136	133	135
Pop. Mean	76.14	75.83	75.51	76.52	76.05	75.40	75.82	74.68	74.28	75.00	74.47	75.25
Std. Deviation	26.92	26.10	27.82	29.61	28.85	28.47	28.90	27.01	27.20	27.94	27.80	28.63
% CCRCL >= 60	69%	69%	65%	63%	62%	62%	63%	62%	62%	61%	60%	61%



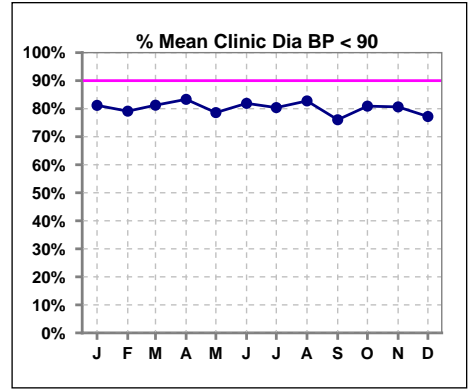
	Jan	Feb	Mar	Apr	May	Jun	Jul	Aug	Sep	Oct	Nov	Dec
# Mean Clinic Sys BP	187	185	194	199	202	210	209	209	214	223	217	216
# Sys BP < 140	111	117	117	123	117	119	114	123	122	125	130	122
Pop. Mean	137	135	134	135	138	137	136	135	137	138	136	137
Std. Deviation	27.0	24.1	26.5	26.6	25.8	26.3	25.4	25.3	24.2	25.0	24.1	23.7
% Sys BP <140	59%	63%	60%	62%	58%	57%	55%	59%	57%	56%	60%	56%



Methodology: a) Kt/V, CRCL and nPNa values are 4 month rolling mean of last value for each month, all other report lab results are based on last value of month; b) BP's are average of all values for month.

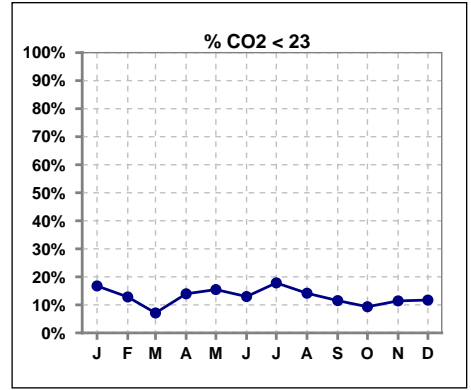
I. ADEQUACY OF DIALYSIS - CONT.

	Jan	Feb	Mar	Apr	May	Jun	Jul	Aug	Sep	Oct	Nov	Dec
# Mean Clinic Dia BP	186	182	192	198	201	210	209	209	213	220	217	215
# Dia BP < 90	151	144	156	165	158	172	168	173	162	178	175	166
Pop. Mean	79	78	77	78	78	78	78	78	79	79	78	79
Std. Deviation	13.7	12.9	14.3	13.4	13.1	13.1	14.4	13.0	13.7	13.2	13.3	13.9
% Dia BP < 90	81%	79%	81%	83%	79%	82%	80%	83%	76%	81%	81%	77%

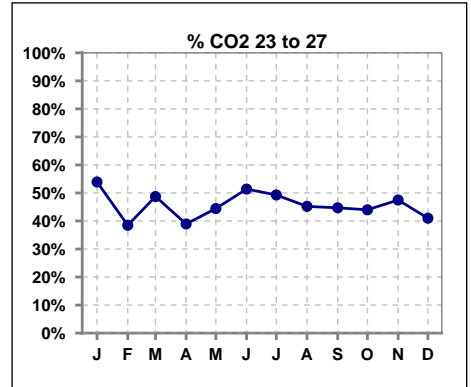


I. ADEQUACY OF DIALYSIS - CONT.

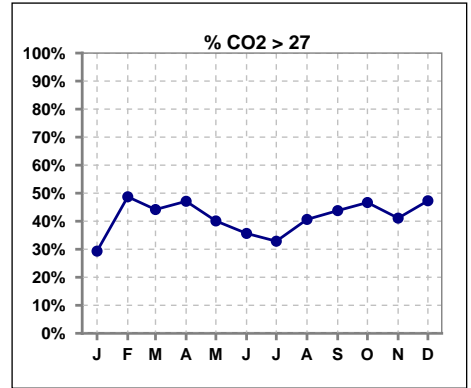
	Jan	Feb	Mar	Apr	May	Jun	Jul	Aug	Sep	Oct	Nov	Dec
# CO2	191	195	197	208	207	216	213	219	217	225	219	222
# CO2 < 23	32	25	14	29	32	28	38	31	25	21	25	26
Pop. Mean	26	27	27	27	26	26	26	26	27	27	27	27
Std. Deviation	3.61	3.63	3.53	3.69	3.56	3.37	3.56	3.35	3.38	3.46	3.49	3.63
% CO2 < 23	17%	13%	7%	14%	15%	13%	18%	14%	12%	9%	11%	12%



	Jan	Feb	Mar	Apr	May	Jun	Jul	Aug	Sep	Oct	Nov	Dec
# CO2	191	195	197	208	207	216	213	219	217	225	219	222
# CO2 23 to 27	103	75	96	81	92	111	105	99	97	99	104	91
Pop. Mean	26	27	27	27	26	26	26	26	27	27	27	27
Std. Deviation	3.61	3.63	3.53	3.69	3.56	3.37	3.56	3.35	3.38	3.46	3.49	3.63
% CO2 23 to 27	54%	38%	49%	39%	44%	51%	49%	45%	45%	44%	47%	41%



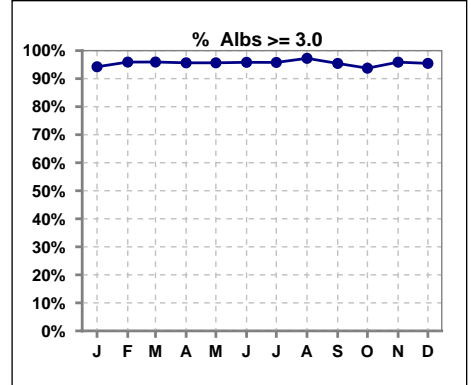
	Jan	Feb	Mar	Apr	May	Jun	Jul	Aug	Sep	Oct	Nov	Dec
# CO2	191	195	197	208	207	216	213	219	217	225	219	222
# CO2 > 27	56	95	87	98	83	77	70	89	95	105	90	105
Pop. Mean	26	27	27	27	26	26	26	26	27	27	27	27
Std. Deviation	3.61	3.63	3.53	3.69	3.56	3.37	3.56	3.35	3.38	3.46	3.49	3.63
% CO2 > 27	29%	49%	44%	47%	40%	36%	33%	41%	44%	47%	41%	47%



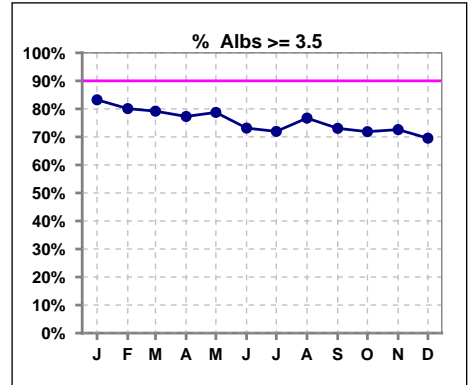
*Albumin values use BCG method - as of July 2001

II. NUTRITION

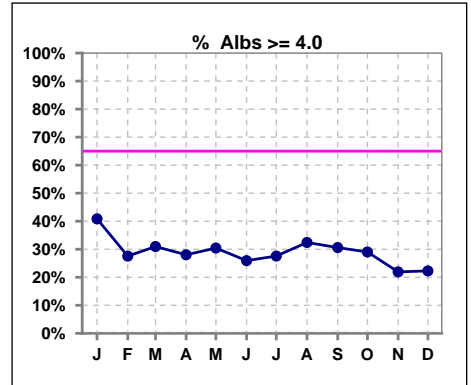
	Jan	Feb	Mar	Apr	May	Jun	Jul	Aug	Sep	Oct	Nov	Dec
# Albumin	191	196	197	207	207	216	214	219	219	224	219	220
# Albumin >= 3.0	180	188	189	198	198	207	205	213	209	210	210	210
Pop. Mean	3.8	3.7	3.7	3.7	3.7	3.7	3.7	3.7	3.7	3.7	3.7	3.6
Std. Deviation	0.48	0.43	0.40	0.39	0.39	0.40	0.39	0.42	0.42	0.47	0.40	0.42
% Alb >= 3.0	94%	96%	96%	96%	96%	96%	96%	97%	95%	94%	96%	95%



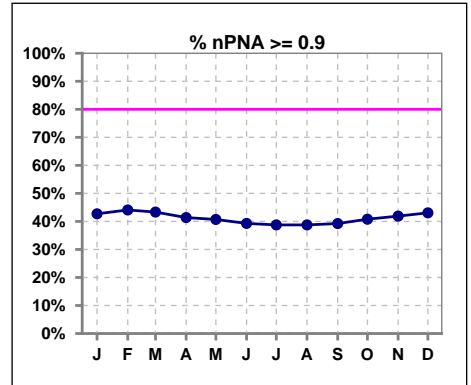
	Jan	Feb	Mar	Apr	May	Jun	Jul	Aug	Sep	Oct	Nov	Dec
# Albumin	191	196	197	207	207	216	214	219	219	224	219	220
# Albumin >= 3.5	159	157	156	160	163	158	154	168	160	161	159	153
Pop. Mean	3.8	3.7	3.7	3.7	3.7	3.7	3.7	3.7	3.7	3.7	3.7	3.6
Std. Deviation	0.48	0.43	0.40	0.39	0.39	0.40	0.39	0.42	0.42	0.47	0.40	0.42
% Alb >= 3.5	83%	80%	79%	77%	79%	73%	72%	77%	73%	72%	73%	70%



	Jan	Feb	Mar	Apr	May	Jun	Jul	Aug	Sep	Oct	Nov	Dec
# Albumin	191	196	197	207	207	216	214	219	219	224	219	220
# Albumin >= 4.0	78	54	61	58	63	56	59	71	67	65	48	49
Pop. Mean	3.8	3.7	3.7	3.7	3.7	3.7	3.7	3.7	3.7	3.7	3.7	3.6
Std. Deviation	0.48	0.43	0.40	0.39	0.39	0.40	0.39	0.42	0.42	0.47	0.40	0.42
% Alb >= 4.0	41%	28%	31%	28%	30%	26%	28%	32%	31%	29%	22%	22%



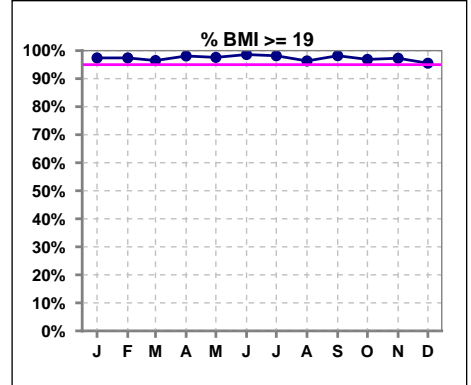
	Jan	Feb	Mar	Apr	May	Jun	Jul	Aug	Sep	Oct	Nov	Dec
# nPNA	96	93	90	87	86	84	80	80	79	76	74	72
# nPNA >= 0.9	41	41	39	36	35	33	31	31	31	31	31	31
Pop. Mean	0.9	0.9	0.9	0.9	0.9	0.9	0.9	0.9	0.9	0.9	0.9	0.9
Std. Deviation	0.27	0.27	0.27	0.27	0.27	0.27	0.27	0.27	0.27	0.28	0.28	0.28
% nPNA >= 0.9	43%	44%	43%	41%	41%	39%	39%	39%	39%	41%	42%	43%



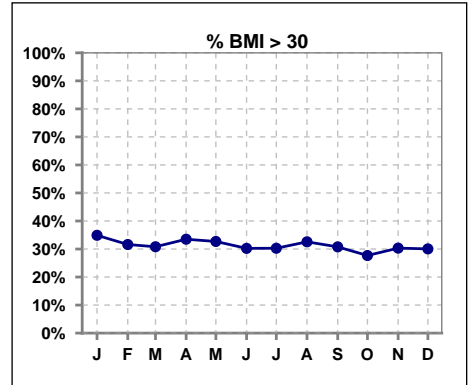
*Albumin values use BCG method - as of July 2001

II. NUTRITION - CONT.

	Jan	Feb	Mar	Apr	May	Jun	Jul	Aug	Sep	Oct	Nov	Dec
# BMI	192	193	198	209	208	215	218	218	221	224	222	223
# BMI >= 19	187	188	191	205	203	212	214	210	217	217	216	213
Pop. Mean	29	29	28	29	29	29	28	28	28	28	28	28
Std. Deviation	6.4	6.5	6.2	6.3	6.4	6.4	6.4	6.3	6.5	6.7	6.6	6.8
% BMI >= 19	97%	97%	96%	98%	98%	99%	98%	96%	98%	97%	97%	96%



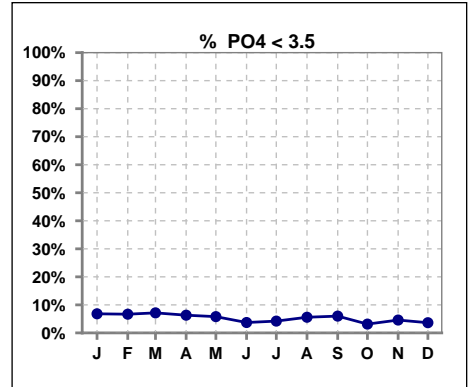
	Jan	Feb	Mar	Apr	May	Jun	Jul	Aug	Sep	Oct	Nov	Dec
# BMI	192	193	198	209	208	215	218	218	221	224	222	223
# BMI > 30	67	61	61	70	68	65	66	70	69	62	68	67
Pop. Mean	29	29	28	29	29	29	28	28	28	28	28	28
Std. Deviation	6.4	6.5	6.2	6.3	6.4	6.4	6.4	6.3	6.5	6.7	6.6	6.8
% BMI > 30	35%	32%	31%	33%	33%	30%	30%	33%	31%	28%	30%	30%



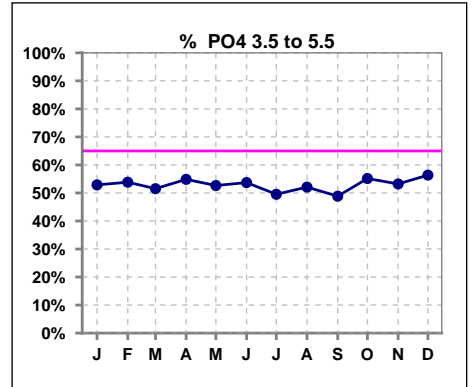
Lab methodology for PTH changed January 2012

III. OSTEODYSTROPHY

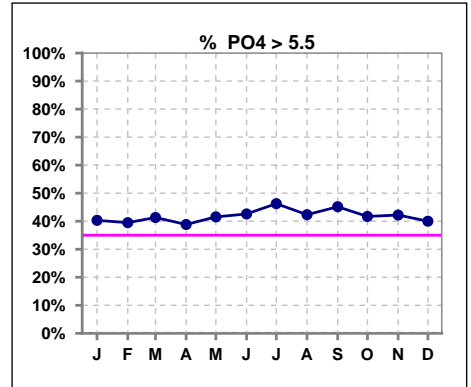
	Jan	Feb	Mar	Apr	May	Jun	Jul	Aug	Sep	Oct	Nov	Dec
# PO4	191	195	196	206	207	216	214	215	217	223	218	220
# PO4 < 3.5	13	13	14	13	12	8	9	12	13	7	10	8
Pop. Mean	5.5	5.4	5.4	5.4	5.4	5.5	5.6	5.4	5.5	5.5	5.5	5.5
Std. Deviation	1.62	1.65	1.50	1.49	1.49	1.51	1.52	1.50	1.41	1.54	1.53	1.50
% PO4 < 3.5	7%	7%	7%	6%	6%	4%	4%	6%	6%	3%	5%	4%



	Jan	Feb	Mar	Apr	May	Jun	Jul	Aug	Sep	Oct	Nov	Dec
# PO4	191	195	196	206	207	216	214	215	217	223	218	220
# PO4 3.5 to 5.5	101	105	101	113	109	116	106	112	106	123	116	124
Pop. Mean	5.5	5.4	5.4	5.4	5.4	5.5	5.6	5.4	5.5	5.5	5.5	5.5
Std. Deviation	1.62	1.65	1.50	1.49	1.49	1.51	1.52	1.50	1.41	1.54	1.53	1.50
% PO4 3.5 to 5.5	53%	54%	52%	55%	53%	54%	50%	52%	49%	55%	53%	56%



	Jan	Feb	Mar	Apr	May	Jun	Jul	Aug	Sep	Oct	Nov	Dec
# PO4	191	195	196	206	207	216	214	215	217	223	218	220
# PO4 > 5.5	77	77	81	80	86	92	99	91	98	93	92	88
Pop. Mean	5.5	5.4	5.4	5.4	5.4	5.5	5.6	5.4	5.5	5.5	5.5	5.5
Std. Deviation	1.62	1.65	1.50	1.49	1.49	1.51	1.52	1.50	1.41	1.54	1.53	1.50
% PO4 > 5.5	40%	39%	41%	39%	42%	43%	46%	42%	45%	42%	42%	40%

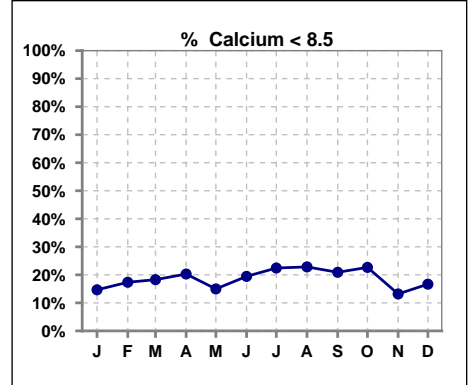


Methodology: a) Kt/V, CRCL and nPNa values are 4 month rolling mean of last value for each month, all other report lab results are based on last value of month; b) BP's are average of all values for month.

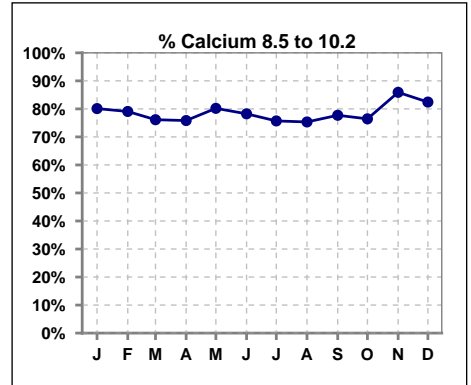
Lab methodology for PTH changed January 2012

III. OSTEODYSTROPHY - CONT.

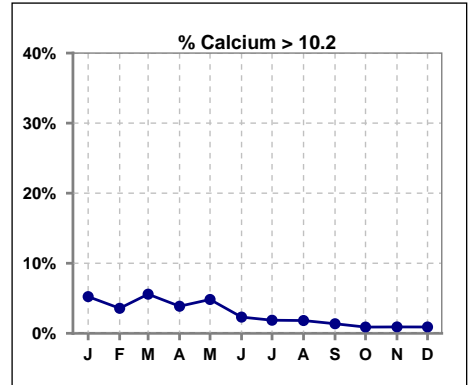
	Jan	Feb	Mar	Apr	May	Jun	Jul	Aug	Sep	Oct	Nov	Dec
# Calcium	191	196	197	207	207	216	214	219	220	225	220	222
# Calcium < 8.5	28	34	36	42	31	42	48	50	46	51	29	37
Pop. Mean	9.2	9.0	9.1	9.1	9.1	9.0	9.0	9.0	9.0	9.0	9.1	9.1
Std. Deviation	0.76	0.71	0.82	0.76	0.69	0.69	0.72	0.72	0.72	0.71	0.69	0.69
% Calcium < 8.5	15%	17%	18%	20%	15%	19%	22%	23%	21%	23%	13%	17%



	Jan	Feb	Mar	Apr	May	Jun	Jul	Aug	Sep	Oct	Nov	Dec
# Calcium	191	196	197	207	207	216	214	219	220	225	220	222
# Calcium 8.5 to 10.2	153	155	150	157	166	169	162	165	171	172	189	183
Pop. Mean	9.2	9.0	9.1	9.1	9.1	9.0	9.0	9.0	9.0	9.0	9.1	9.1
Std. Deviation	0.76	0.71	0.82	0.76	0.69	0.69	0.72	0.72	0.72	0.71	0.69	0.69
% Calcium 8.5 to 10.2	80%	79%	76%	76%	80%	78%	76%	75%	78%	76%	86%	82%



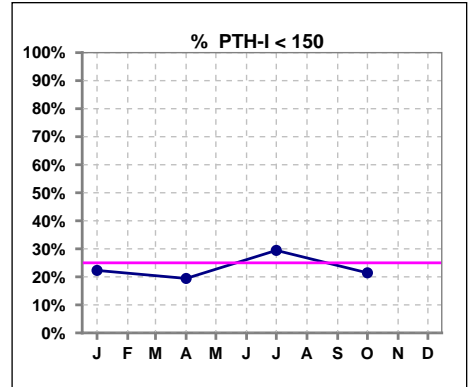
	Jan	Feb	Mar	Apr	May	Jun	Jul	Aug	Sep	Oct	Nov	Dec
# Calcium	191	196	197	207	207	216	214	219	220	225	220	222
# Calcium > 10.2	10	7	11	8	10	5	4	4	3	2	2	2
Pop. Mean	9.2	9.0	9.1	9.1	9.1	9.0	9.0	9.0	9.0	9.0	9.1	9.1
Std. Deviation	0.76	0.71	0.82	0.76	0.69	0.69	0.72	0.72	0.72	0.71	0.69	0.69
% Calcium > 10.2	5%	4%	6%	4%	5%	2%	2%	2%	1%	1%	1%	1%



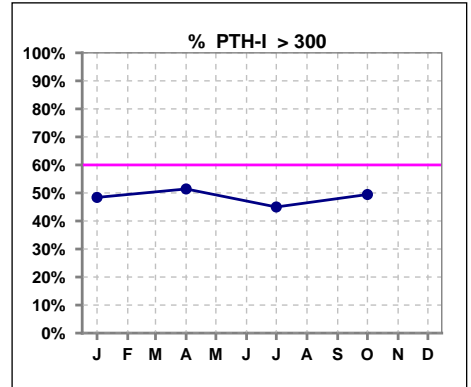
Lab methodology for PTH changed January 2012

III. OSTEODYSTROPHY - CONT.

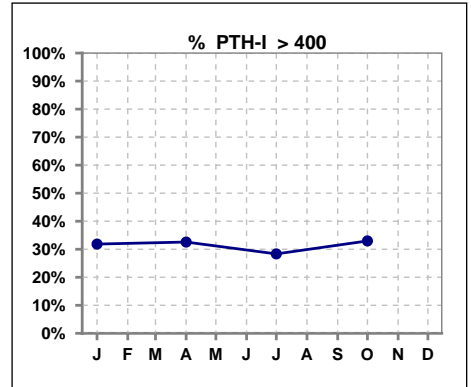
	Jan	Feb	Mar	Apr	May	Jun	Jul	Aug	Sep	Oct	Nov	Dec
# PTH-I	157			175			180			182		
# PTH-I < 150	35			34			53			39		
Pop. Mean	351			366			335			346		
Std. Deviation	279			310			262			246		
% PTH-I < 150	22%			19%			29%			21%		



	Jan	Feb	Mar	Apr	May	Jun	Jul	Aug	Sep	Oct	Nov	Dec
# PTH-I	157			175			180			182		
# PTH-I > 300	76			90			81			90		
Pop. Mean	351			366			335			346		
Std. Deviation	279			310			262			246		
% PTH-I > 300	48%			51%			45%			49%		



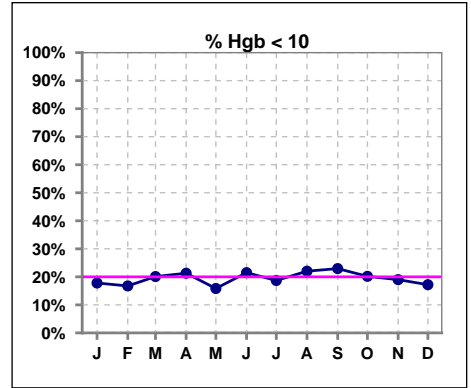
	Jan	Feb	Mar	Apr	May	Jun	Jul	Aug	Sep	Oct	Nov	Dec
# PTH-I	157			175			180			182		
# PTH-I > 400	50			57			51			60		
Pop. Mean	351			366			335			346		
Std. Deviation	279			310			262			246		
% PTH-I > 400	32%			33%			28%			33%		



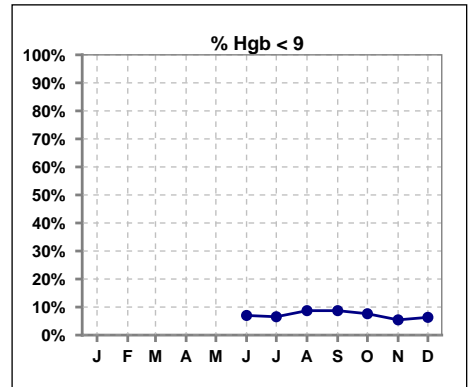
Methodology: a) Kt/V, CRCL and nPNa values are 4 month rolling mean of last value for each month, all other report lab results are based on last value of month; b) BP's are average of all values for month.

IV. ANEMIA

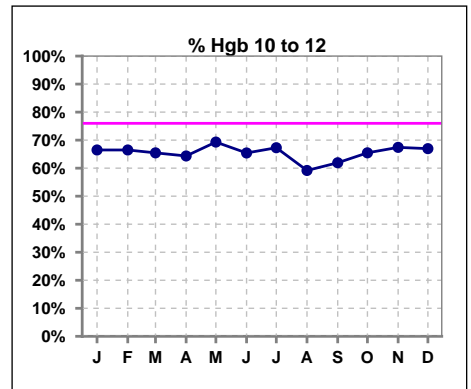
	Jan	Feb	Mar	Apr	May	Jun	Jul	Aug	Sep	Oct	Nov	Dec
# Hgb	191	191	194	202	202	214	214	218	218	223	221	221
# Hgb < 10	34	32	39	43	32	46	40	48	50	45	42	38
Pop. Mean	10.9	10.9	10.9	10.7	10.9	10.8	10.9	10.9	10.8	10.8	10.9	10.9
Std. Deviation	1.4	1.4	1.3	1.4	1.2	1.3	1.3	1.4	1.3	1.3	1.2	1.2
% Hgb < 10	18%	17%	20%	21%	16%	21%	19%	22%	23%	20%	19%	17%



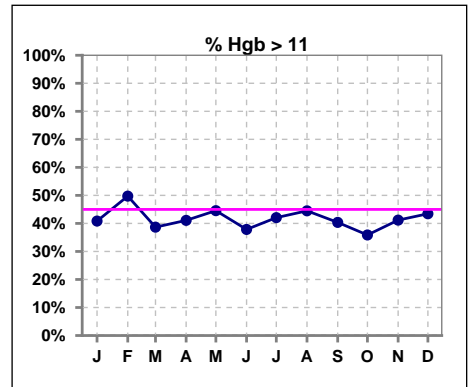
	Jan	Feb	Mar	Apr	May	Jun	Jul	Aug	Sep	Oct	Nov	Dec
# Hgb						214	214	218	218	223	221	221
# Hgb < 9						15	14	19	19	17	12	14
Pop. Mean						10.8	10.9	10.9	10.8	10.8	10.9	10.9
Std. Deviation						1.3	1.3	1.4	1.3	1.3	1.2	1.2
% Hgb < 9						7%	7%	9%	9%	8%	5%	6%



	Jan	Feb	Mar	Apr	May	Jun	Jul	Aug	Sep	Oct	Nov	Dec
# Hgb	191	191	194	202	202	214	214	218	218	223	221	221
# Hgb 10 to 12	127	127	127	130	140	140	144	129	135	146	149	148
Pop. Mean	10.9	10.9	10.9	10.7	10.9	10.8	10.9	10.9	10.8	10.8	10.9	10.9
Std. Deviation	1.4	1.4	1.3	1.4	1.2	1.3	1.3	1.4	1.3	1.3	1.2	1.2
% Hgb 10 to 12	66%	66%	65%	64%	69%	65%	67%	59%	62%	65%	67%	67%

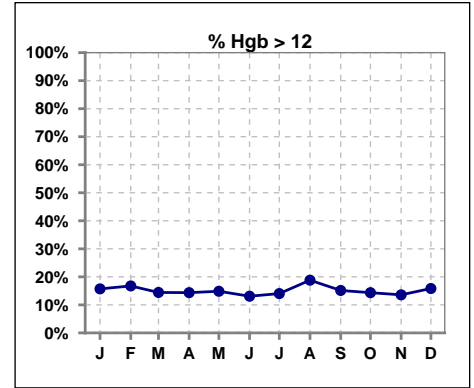


	Jan	Feb	Mar	Apr	May	Jun	Jul	Aug	Sep	Oct	Nov	Dec
# Hgb	191	191	194	202	202	214	214	218	218	223	221	221
# Hgb > 11	78	95	75	83	90	81	90	97	88	80	91	96
Pop. Mean	10.9	10.9	10.9	10.7	10.9	10.8	10.9	10.9	10.8	10.8	10.9	10.9
Std. Deviation	1.4	1.4	1.3	1.4	1.2	1.3	1.3	1.4	1.3	1.3	1.2	1.2
% Hgb > 11	41%	50%	39%	41%	45%	38%	42%	44%	40%	36%	41%	43%



IV. ANEMIA - CONT.

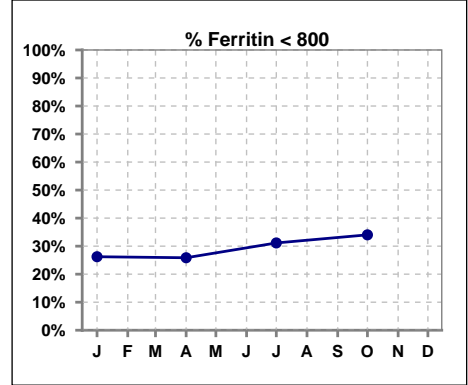
	Jan	Feb	Mar	Apr	May	Jun	Jul	Aug	Sep	Oct	Nov	Dec
# Hgb	191	191	194	202	202	214	214	218	218	223	221	221
# Hgb > 12	30	32	28	29	30	28	30	41	33	32	30	35
Pop. Mean	10.9	10.9	10.9	10.7	10.9	10.8	10.9	10.9	10.8	10.8	10.9	10.9
Std. Deviation	1.4	1.4	1.3	1.4	1.2	1.3	1.3	1.4	1.3	1.3	1.2	1.2
% Hgb > 12	16%	17%	14%	14%	15%	13%	14%	19%	15%	14%	14%	16%



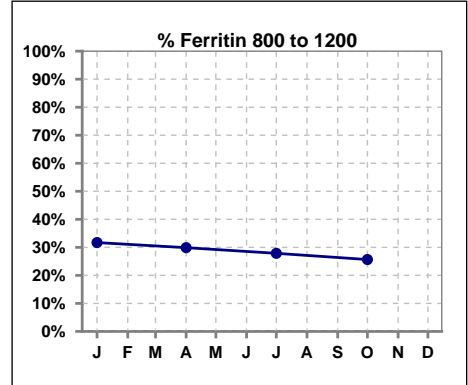
IV. ANEMIA - CONT.

Iron Profile

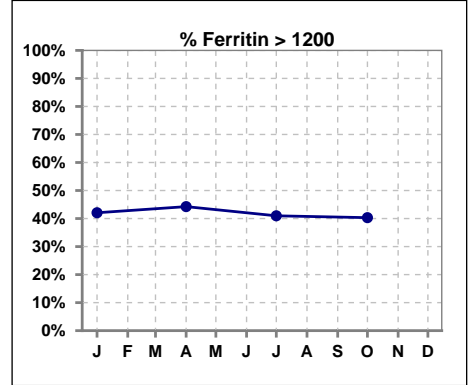
	Jan	Feb	Mar	Apr	May	Jun	Jul	Aug	Sep	Oct	Nov	Dec
# Ferritin	164			174			183			191		
# Ferritin < 800	43			45			57			65		
Pop. Mean	1147			1147			1072			1061		
Std. Deviation	569			582			549			558		
% Ferritin < 800	26%			26%			31%			34%		



	Jan	Feb	Mar	Apr	May	Jun	Jul	Aug	Sep	Oct	Nov	Dec
# Ferritin	164			174			183			191		
# Ferritin 800 to 1200	52			52			51			49		
Pop. Mean	1147			1147			1072			1061		
Std. Deviation	569			582			549			558		
% Ferritin 800 to 1200	32%			30%			28%			26%		

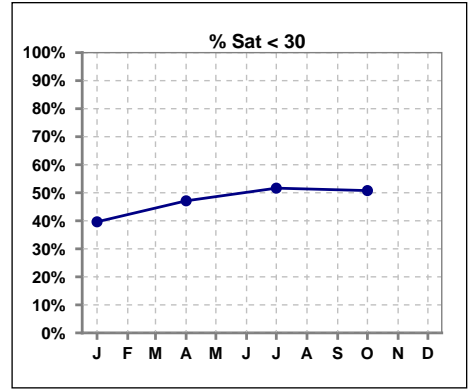


	Jan	Feb	Mar	Apr	May	Jun	Jul	Aug	Sep	Oct	Nov	Dec
# Ferritin	164			174			183			191		
# Ferritin > 1200	69			77			75			77		
Pop. Mean	1147			1147			1072			1061		
Std. Deviation	569			582			549			558		
% Ferritin > 1200	42%			44%			41%			40%		

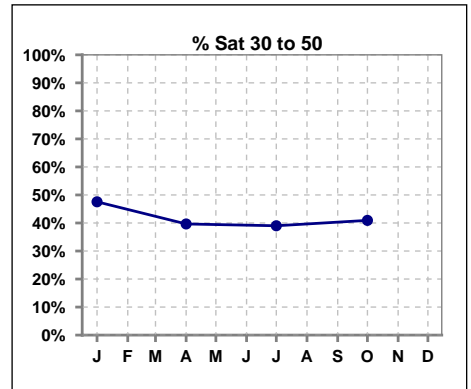


IV. ANEMIA - CONT.

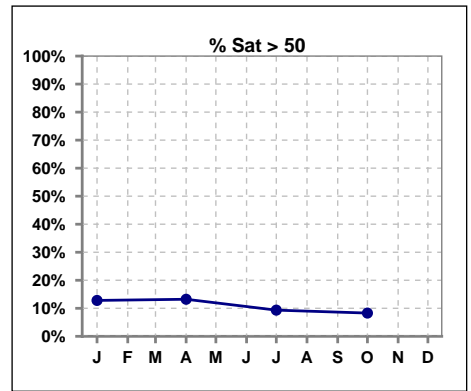
	Jan	Feb	Mar	Apr	May	Jun	Jul	Aug	Sep	Oct	Nov	Dec
# % Sat	164			174			182			193		
# % Sat < 30	65			82			94			98		
Pop. Mean	35			34			31			31		
Std. Deviation	15			17			14			14		
% % Sat < 30	40%			47%			52%			51%		



	Jan	Feb	Mar	Apr	May	Jun	Jul	Aug	Sep	Oct	Nov	Dec
# % Sat	164			174			182			193		
# % Sat 30 to 50	78			69			71			79		
Pop. Mean	35			34			31			31		
Std. Deviation	15			17			14			14		
% Sat% 30 to 50	48%			40%			39%			41%		

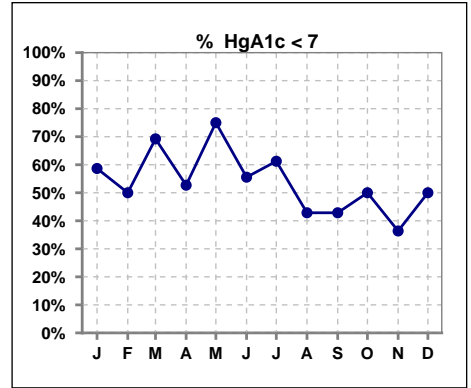


	Jan	Feb	Mar	Apr	May	Jun	Jul	Aug	Sep	Oct	Nov	Dec
# % Sat	164			174			182			193		
# % Sat > 50	21			23			17			16		
Pop. Mean	35			34			31			31		
Std. Deviation	15			17			14			14		
% Sat% > 50	13%			13%			9%			8%		



V. Diabetes

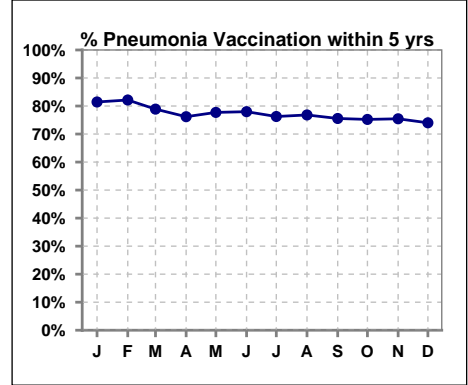
	Jan	Feb	Mar	Apr	May	Jun	Jul	Aug	Sep	Oct	Nov	Dec
# HgA1c	75	4	13	74	8	18	80	7	14	76	11	18
# HgA1c < 7	44	2	9	39	6	10	49	3	6	38	4	9
Pop. Mean	6.8	7.1	6.5	7.0	6.5	6.9	6.9	7.5	7.1	7.1	7.4	7.1
Std. Deviation	1.10	1.11	0.55	1.23	1.17	1.42	1.20	1.10	1.26	1.19	1.43	1.22
% HgA1c < 7	59%	50%	69%	53%	75%	56%	61%	43%	43%	50%	36%	50%



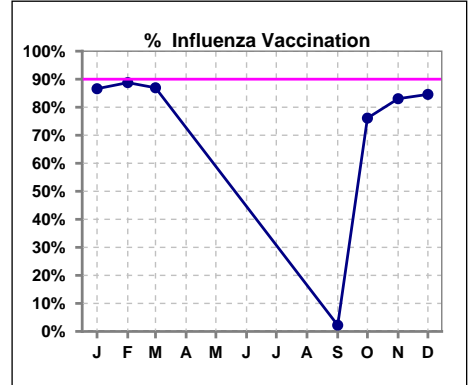
VI. Infection Control

Pneumonia vaccination within the past five years

	Jan	Feb	Mar	Apr	May	Jun	Jul	Aug	Sep	Oct	Nov	Dec
# Patient	194	196	199	210	211	218	219	220	225	226	224	227
# Pneumonia	158	161	157	160	164	170	167	169	170	170	169	168
% Pneumonia	81%	82%	79%	76%	78%	78%	76%	77%	76%	75%	75%	74%



	Jan	Feb	Mar	Apr	May	Jun	Jul	Aug	Sep	Oct	Nov	Dec
# Patient	194	196	199						225	226	224	227
# Influenza	168	174	173						5	172	186	192
% Influenza	87%	89%	87%						2%	76%	83%	85%



Exit Site Infection Rate

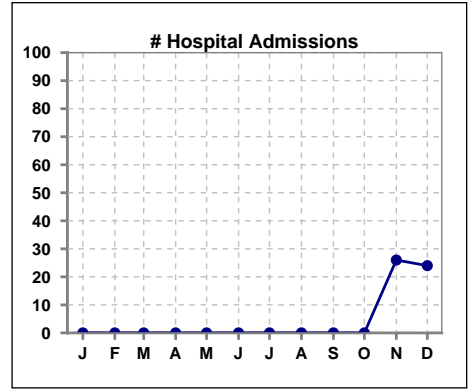
	Jan	Feb	Mar	Apr	May	Jun	Jul	Aug	Sep	Oct	Nov	Dec
Current Month	0	30.90	70.63	105.28	0	73.66	77.13	57.68	0	58.81	0	118.16
Rolling Year-to-date	0.17	0.18	0.18	0.17	0.15	0.15	0.15	0.14	0.12	0.12	0.12	0.12

Peritonitis Infection Rate

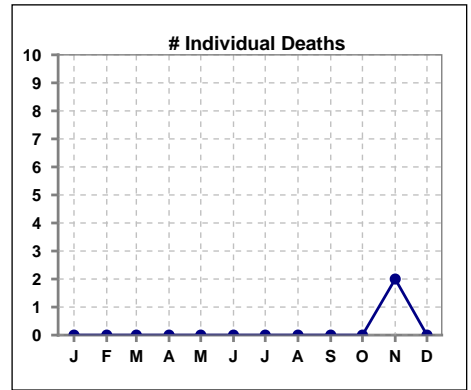
	Jan	Feb	Mar	Apr	May	Jun	Jul	Aug	Sep	Oct	Nov	Dec
Current Month	100.72	30.90	105.95	42.11	36.71	44.19	77.13	57.68	45.38	58.81	28.34	47.26
Rolling Year-to-date	0.36	0.36	0.36	0.33	0.32	0.31	0.29	0.27	0.26	0.25	0.27	0.25

VIII. Outcome measures

	Jan	Feb	Mar	Apr	May	Jun	Jul	Aug	Sep	Oct	Nov	Dec
# Patient	0	0	0	0	0	0	0	0	0	0	224	227
# Hospital Admissions	0	0	0	0	0	0	0	0	0	0	26	24



	Jan	Feb	Mar	Apr	May	Jun	Jul	Aug	Sep	Oct	Nov	Dec
# Patient	0	0	0	0	0	0	0	0	0	0	224	227
# Individual Deaths	0	0	0	0	0	0	0	0	0	0	2	0



	Jan	Feb	Mar	Apr	May	Jun	Jul	Aug	Sep	Oct	Nov	Dec
# Patient	194	196	199	210	211	218	219	220	225	226	224	227
# Transplants	1	0	3	3	0	1	2	3	1	1	0	0

