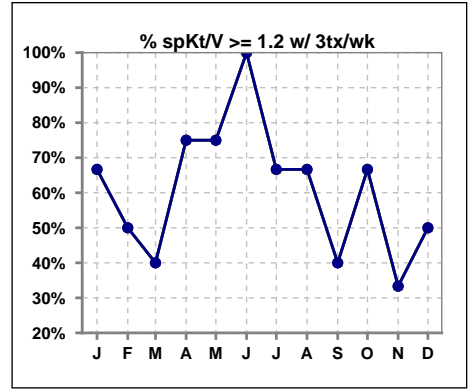
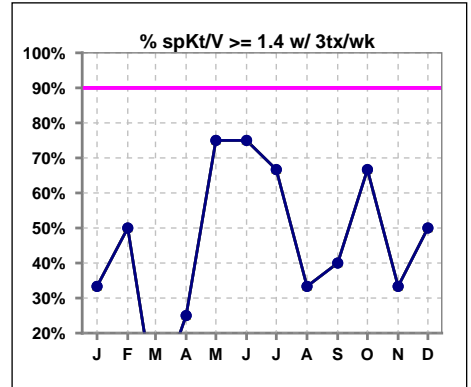


I. ADEQUACY OF DIALYSIS

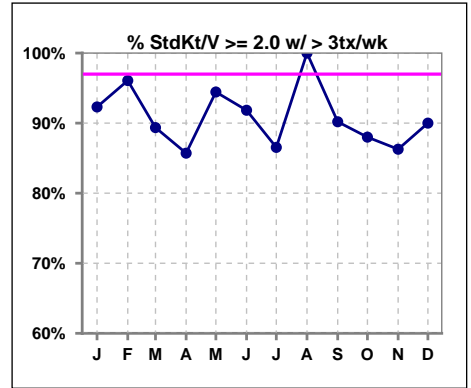
	Jan	Feb	Mar	Apr	May	Jun	Jul	Aug	Sep	Oct	Nov	Dec
# spKt/V w/3tx/wk	3	4	5	4	4	4	3	3	5	3	3	2
# spKt/V >=1.2 w/3tx/wk	2	2	2	3	3	4	2	2	2	2	1	1
Pop. Mean	1.21	1.23	1.07	1.27	1.54	1.59	1.60	1.47	1.33	1.41	1.16	1.25
Std. Deviation	0.36	0.29	0.21	0.34	0.34	0.27	0.46	0.34	0.37	0.45	0.65	0.67
% >=1.2 w/3tx/wk	67%	50%	40%	75%	75%	100%	67%	67%	40%	67%	33%	50%



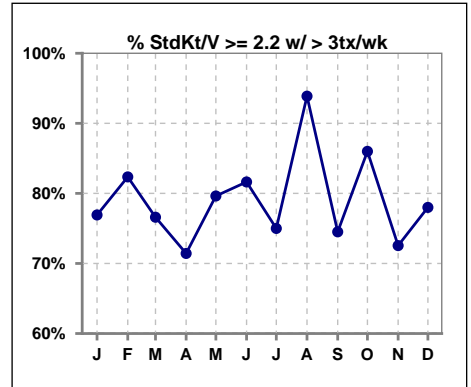
	Jan	Feb	Mar	Apr	May	Jun	Jul	Aug	Sep	Oct	Nov	Dec
# spKt/V w/3tx/wk	3	4	5	4	4	4	3	3	5	3	3	2
# spKt/V >=1.4 w/3tx/wk	1	2	0	1	3	3	2	1	2	2	1	1
Pop. Mean	1.21	1.23	1.07	1.27	1.54	1.59	1.60	1.47	1.33	1.41	1.16	1.25
Std. Deviation	0.36	0.29	0.21	0.34	0.34	0.27	0.46	0.34	0.37	0.45	0.65	0.67
% >=1.4 w/3tx/wk	33%	50%	0%	25%	75%	75%	67%	33%	40%	67%	33%	50%



	Jan	Feb	Mar	Apr	May	Jun	Jul	Aug	Sep	Oct	Nov	Dec
# StdKt/V w/>3tx/wk	52	51	47	49	54	49	52	49	51	50	51	50
# >= 2.0 w/>3tx/wk	48	49	42	42	51	45	45	49	46	44	44	45
Pop. Mean	2.45	2.44	2.38	2.38	2.40	2.43	2.35	2.53	2.37	2.39	2.34	2.48
Std. Deviation	0.49	0.39	0.29	0.31	0.33	0.34	0.32	0.33	0.39	0.38	0.38	0.46
% >= 2.0 w/>3tx/wk	92%	96%	89%	86%	94%	92%	87%	100%	90%	88%	86%	90%



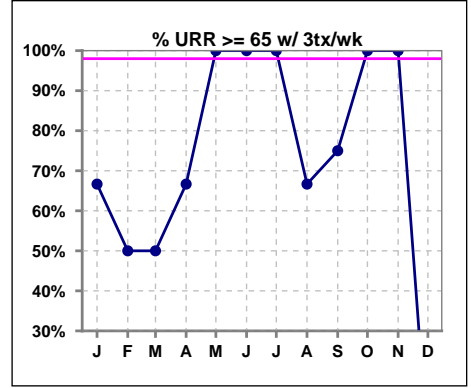
	Jan	Feb	Mar	Apr	May	Jun	Jul	Aug	Sep	Oct	Nov	Dec
# StdKt/V w/>3tx/wk	52	51	47	49	54	49	52	49	51	50	51	50
# >= 2.2 w/>3tx/wk	40	42	36	35	43	40	39	46	38	43	37	39
Pop. Mean	2.45	2.44	2.38	2.38	2.40	2.43	2.35	2.53	2.37	2.39	2.34	2.48
Std. Deviation	0.49	0.39	0.29	0.31	0.33	0.34	0.32	0.33	0.39	0.38	0.38	0.46
% >= 2.2 w/>3tx/wk	77%	82%	77%	71%	80%	82%	75%	94%	75%	86%	73%	78%



Methodology: a) All labs for 'Adequacy of Dialysis', 'Nutrition', 'Osteodystrophy' and 'Anemia' based on last value of month; b) Access data takes last access of month; c) Values for 'Infection Control' uses most recent result.

I. ADEQUACY OF DIALYSIS - CONT.

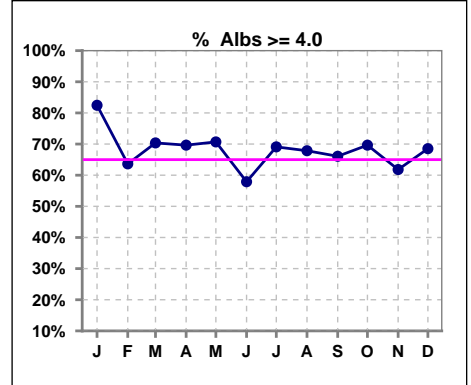
	Jan	Feb	Mar	Apr	May	Jun	Jul	Aug	Sep	Oct	Nov	Dec
# URR w/ 3tx/wk	3	4	4	3	3	4	3	3	4	3	1	0
# URR>=65 w/ 3tx/wk	2	2	2	2	3	4	3	2	3	3	1	0
Pop. Mean	64	63	62	64	75	73	73	69	70	73	76	0
Std. Deviation	12.72	11.84	9.35	12.97	3.18	5.81	6.98	5.17	5.59	1.89	0	0
% URR>=65 w/ 3tx/wk	67%	50%	50%	67%	100%	100%	100%	67%	75%	100%	100%	0%



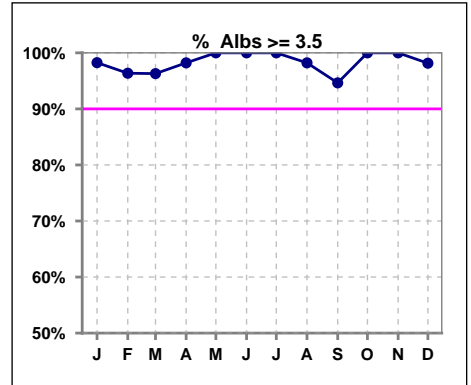
*Albumin values use BCG method - as of July 2001

II. NUTRITION

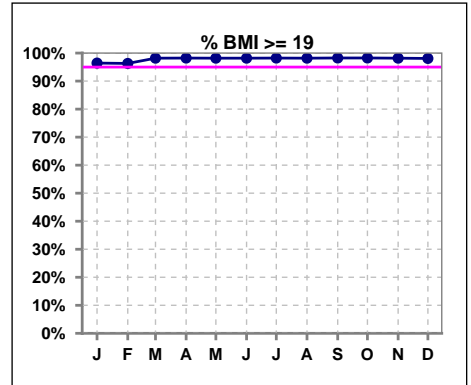
	Jan	Feb	Mar	Apr	May	Jun	Jul	Aug	Sep	Oct	Nov	Dec
# Albumin	57	55	54	56	58	57	55	56	56	56	55	54
# Albumin >= 4.0	47	35	38	39	41	33	38	38	37	39	34	37
Pop. Mean	4.2	4.1	4.1	4.1	4.2	4.1	4.1	4.1	4.1	4.1	4.1	4.1
Std. Deviation	0.33	0.35	0.33	0.39	0.34	0.34	0.31	0.29	0.38	0.28	0.28	0.27
% Alb >= 4.0	82%	64%	70%	70%	71%	58%	69%	68%	66%	70%	62%	69%



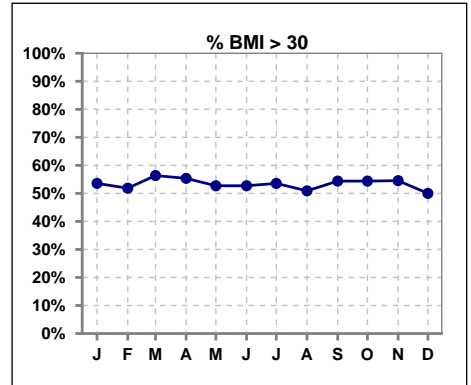
	Jan	Feb	Mar	Apr	May	Jun	Jul	Aug	Sep	Oct	Nov	Dec
# Albumin	57	55	54	56	58	57	55	56	56	56	55	54
# Albumin >= 3.5	56	53	52	55	58	57	55	55	53	56	55	53
Pop. Mean	4.2	4.1	4.1	4.1	4.2	4.1	4.1	4.1	4.1	4.1	4.1	4.1
Std. Deviation	0.33	0.35	0.33	0.39	0.34	0.34	0.31	0.29	0.38	0.28	0.28	0.27
% Alb >= 3.5	98%	96%	96%	98%	100%	100%	100%	98%	95%	100%	100%	98%



	Jan	Feb	Mar	Apr	May	Jun	Jul	Aug	Sep	Oct	Nov	Dec
# BMI	56	54	55	56	55	55	56	55	57	57	55	52
# BMI >= 19	54	52	54	55	54	54	55	54	56	56	54	51
Pop. Mean	32	31	32	32	31	31	31	31	31	32	32	32
Std. Deviation	8.0	8.0	7.8	7.7	7.8	7.9	7.8	7.6	7.8	7.7	7.6	7.4
% BMI >= 19	96%	96%	98%	98%	98%	98%	98%	98%	98%	98%	98%	98%



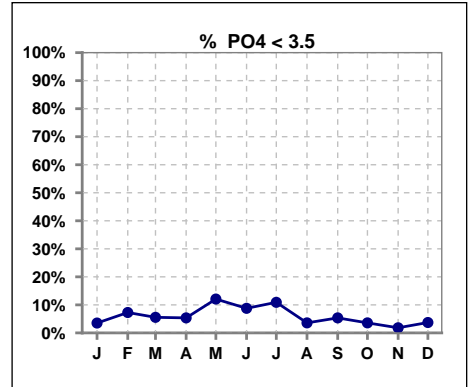
	Jan	Feb	Mar	Apr	May	Jun	Jul	Aug	Sep	Oct	Nov	Dec
# BMI	56	54	55	56	55	55	56	55	57	57	55	52
# BMI > 30	30	28	31	31	29	29	30	28	31	31	30	26
Pop. Mean	32	31	32	32	31	31	31	31	31	32	32	32
Std. Deviation	8.0	8.0	7.8	7.7	7.8	7.9	7.8	7.6	7.8	7.7	7.6	7.4
% BMI > 30	54%	52%	56%	55%	53%	53%	54%	51%	54%	54%	55%	50%



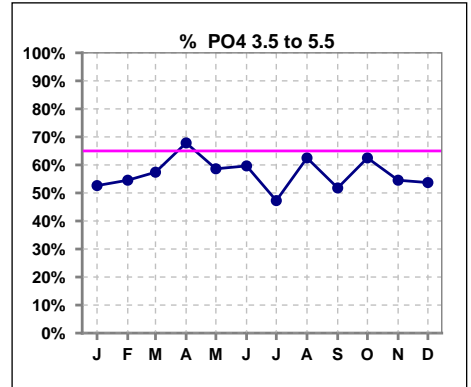
Lab methodology for PTH changed January 2012

III. OSTEODYSTROPHY

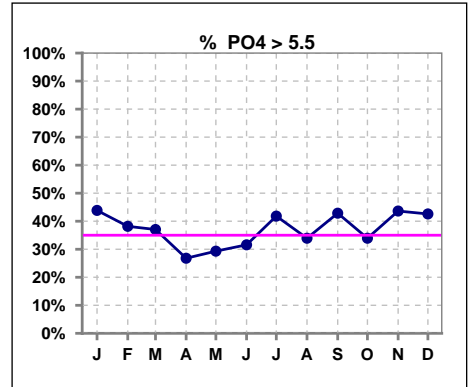
	Jan	Feb	Mar	Apr	May	Jun	Jul	Aug	Sep	Oct	Nov	Dec
# PO4	57	55	54	56	58	57	55	56	56	56	55	54
# PO4 < 3.5	2	4	3	3	7	5	6	2	3	2	1	2
Pop. Mean	5.5	5.5	5.6	5.1	5.2	5.2	5.5	5.4	5.6	5.4	5.7	5.5
Std. Deviation	1.67	1.93	1.89	1.33	1.86	1.43	1.79	1.75	1.91	1.44	1.87	1.68
% PO4 < 3.5	4%	7%	6%	5%	12%	9%	11%	4%	5%	4%	2%	4%



	Jan	Feb	Mar	Apr	May	Jun	Jul	Aug	Sep	Oct	Nov	Dec
# PO4	57	55	54	56	58	57	55	56	56	56	55	54
# PO4 3.5 to 5.5	30	30	31	38	34	34	26	35	29	35	30	29
Pop. Mean	5.5	5.5	5.6	5.1	5.2	5.2	5.5	5.4	5.6	5.4	5.7	5.5
Std. Deviation	1.67	1.93	1.89	1.33	1.86	1.43	1.79	1.75	1.91	1.44	1.87	1.68
% PO4 3.5 to 5.5	53%	55%	57%	68%	59%	60%	47%	63%	52%	63%	55%	54%



	Jan	Feb	Mar	Apr	May	Jun	Jul	Aug	Sep	Oct	Nov	Dec
# PO4	57	55	54	56	58	57	55	56	56	56	55	54
# PO4 > 5.5	25	21	20	15	17	18	23	19	24	19	24	23
Pop. Mean	5.5	5.5	5.6	5.1	5.2	5.2	5.5	5.4	5.6	5.4	5.7	5.5
Std. Deviation	1.67	1.93	1.89	1.33	1.86	1.43	1.79	1.75	1.91	1.44	1.87	1.68
% PO4 > 5.5	44%	38%	37%	27%	29%	32%	42%	34%	43%	34%	44%	43%

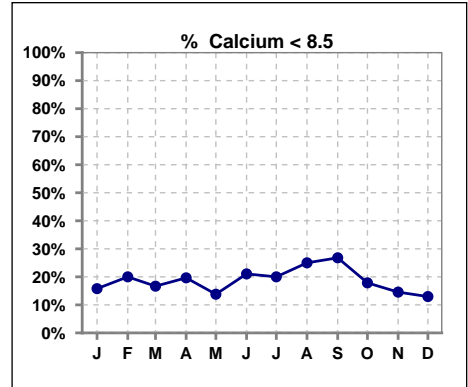


Methodology: a) All labs for 'Adequacy of Dialysis', 'Nutrition', 'Osteodystrophy' and 'Anemia' based on last value of month; b) Access data takes last access of month; c) Values for 'Infection Control' uses most recent result.

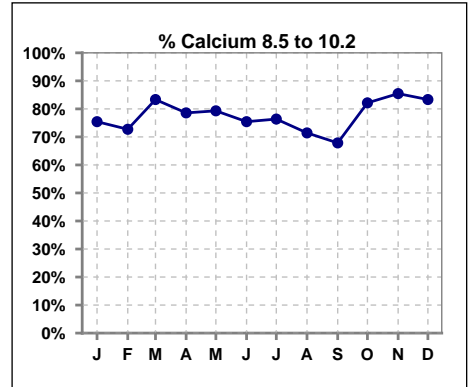
Lab methodology for PTH changed January 2012

III. OSTEODYSTROPHY - CONT.

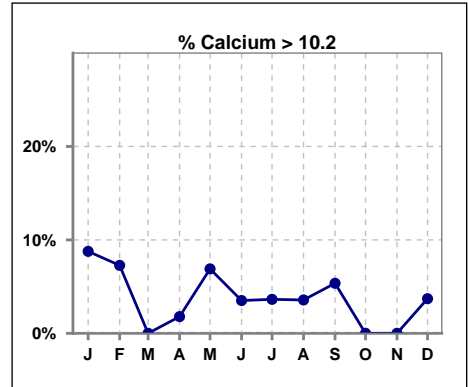
	Jan	Feb	Mar	Apr	May	Jun	Jul	Aug	Sep	Oct	Nov	Dec
# Calcium	57	55	54	56	58	57	55	56	56	56	55	54
# Calcium < 8.5	9	11	9	11	8	12	11	14	15	10	8	7
Pop. Mean	9.2	9.1	9.1	9.0	9.2	9.0	9.0	9.0	9.1	9.1	9.1	9.2
Std. Deviation	0.83	0.91	0.67	0.80	0.84	0.90	0.76	0.69	0.75	0.84	0.76	0.70
% Calcium < 8.5	16%	20%	17%	20%	14%	21%	20%	25%	27%	18%	15%	13%



	Jan	Feb	Mar	Apr	May	Jun	Jul	Aug	Sep	Oct	Nov	Dec
# Calcium	57	55	54	56	58	57	55	56	56	56	55	54
# Calcium 8.5 to 10.2	43	40	45	44	46	43	42	40	38	46	47	45
Pop. Mean	9.2	9.1	9.1	9.0	9.2	9.0	9.0	9.0	9.1	9.1	9.1	9.2
Std. Deviation	0.83	0.91	0.67	0.80	0.84	0.90	0.76	0.69	0.75	0.84	0.76	0.70
% Calcium 8.5 to 10.2	75%	73%	83%	79%	79%	75%	76%	71%	68%	82%	85%	83%



	Jan	Feb	Mar	Apr	May	Jun	Jul	Aug	Sep	Oct	Nov	Dec
# Calcium	57	55	54	56	58	57	55	56	56	56	55	54
# Calcium > 10.2	5	4	0	1	4	2	2	2	3	0	0	2
Pop. Mean	9.2	9.1	9.1	9.0	9.2	9.0	9.0	9.0	9.1	9.1	9.1	9.2
Std. Deviation	0.83	0.91	0.67	0.80	0.84	0.90	0.76	0.69	0.75	0.84	0.76	0.70
% Calcium > 10.2	9%	7%	0%	2%	7%	4%	4%	4%	5%	0%	0%	4%

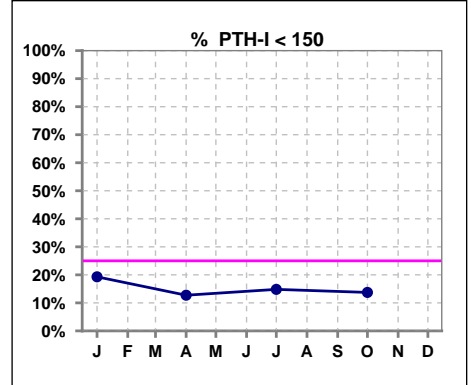


Methodology: a) All labs for 'Adequacy of Dialysis', 'Nutrition', 'Osteodystrophy' and 'Anemia' based on last value of month; b) Access data takes last access of month; c) Values for 'Infection Control' uses most recent result.

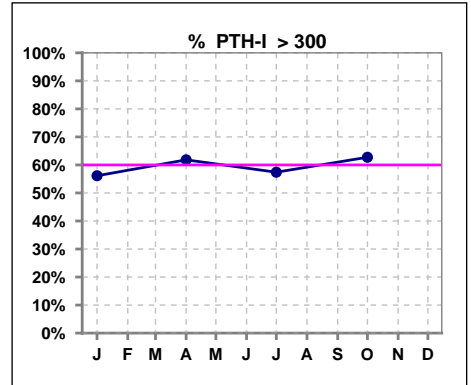
Lab methodology for PTH changed January 2012

III. OSTEODYSTROPHY - CONT.

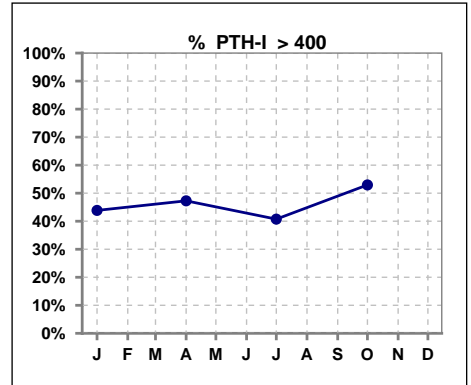
	Jan	Feb	Mar	Apr	May	Jun	Jul	Aug	Sep	Oct	Nov	Dec
# PTH-I	57			55			54			51		
# PTH-I < 150	11			7			8			7		
Pop. Mean	414			443			435			486		
Std. Deviation	306			303			322			336		
% PTH-I < 150	19%			13%			15%			14%		



	Jan	Feb	Mar	Apr	May	Jun	Jul	Aug	Sep	Oct	Nov	Dec
# PTH-I	57			55			54			51		
# PTH-I > 300	32			34			31			32		
Pop. Mean	414			443			435			486		
Std. Deviation	306			303			322			336		
% PTH-I > 300	56%			62%			57%			63%		



	Jan	Feb	Mar	Apr	May	Jun	Jul	Aug	Sep	Oct	Nov	Dec
# PTH-I	57			55			54			51		
# PTH-I > 400	57			55			54			51		
Pop. Mean	414			443			435			486		
Std. Deviation	306			303			322			336		
% PTH-I > 400	44%			47%			41%			53%		

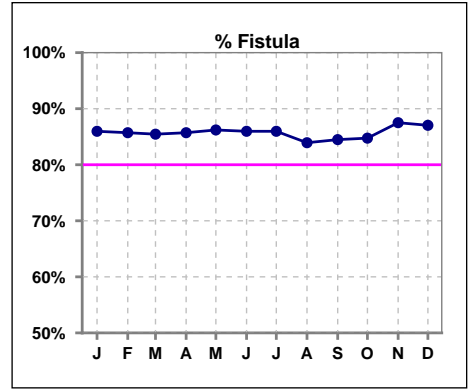


Methodology: a) All labs for 'Adequacy of Dialysis', 'Nutrition', 'Osteodystrophy' and 'Anemia' based on last value of month; b) Access data takes last access of month; c) Values for 'Infection Control' uses most recent result.

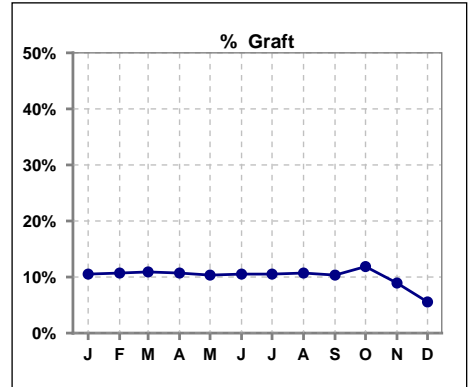
Northwest Kidney Centers - Home Hemodialysis
Quality Assurance Reports
 Through period ending Dec. 31, 2015

IV. ACCESS

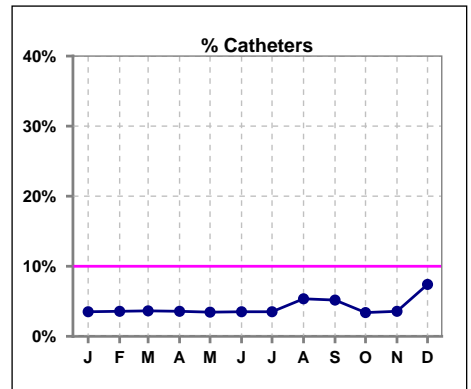
	Jan	Feb	Mar	Apr	May	Jun	Jul	Aug	Sep	Oct	Nov	Dec
# Access	57	56	55	56	58	57	57	56	58	59	56	54
# Fistula	49	48	47	48	50	49	49	47	49	50	49	47
% Fistula	86%	86%	85%	86%	86%	86%	86%	84%	84%	85%	88%	87%



	Jan	Feb	Mar	Apr	May	Jun	Jul	Aug	Sep	Oct	Nov	Dec
# Access	57	56	55	56	58	57	57	56	58	59	56	54
# Graft	6	6	6	6	6	6	6	6	6	7	5	3
% Graft	11%	11%	11%	11%	10%	11%	11%	11%	10%	12%	9%	6%



	Jan	Feb	Mar	Apr	May	Jun	Jul	Aug	Sep	Oct	Nov	Dec
# Access	57	56	55	56	58	57	57	56	58	59	56	54
# Catheters	2	2	2	2	2	2	2	3	3	2	2	4
% Catheters	4%	4%	4%	4%	3%	4%	4%	5%	5%	3%	4%	7%



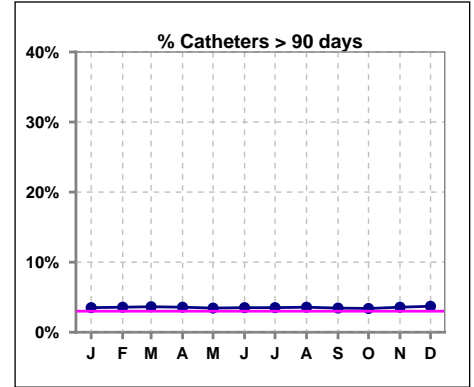
Methodology: a) All labs for 'Adequacy of Dialysis', 'Nutrition', 'Osteodystrophy' and 'Anemia' based on last value of month; b) Access data takes last access of month; c) Values for 'Infection Control' uses most recent result.

IV. ACCESS - CONT.

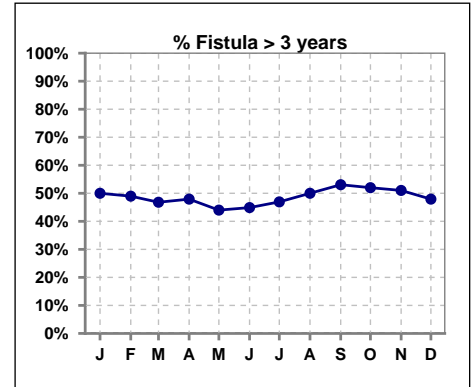
Catheters > 90 days

	Jan	Feb	Mar	Apr	May	Jun	Jul	Aug	Sep	Oct	Nov	Dec
# Access	57	56	55	56	58	57	57	56	58	59	56	54
# Catheters	2	2	2	2	2	2	2	2	2	2	2	2
% Catheters	4%	4%	4%	4%	3%	4%	4%	4%	3%	3%	4%	4%

Definition: Catheter in use on last treatment of the month

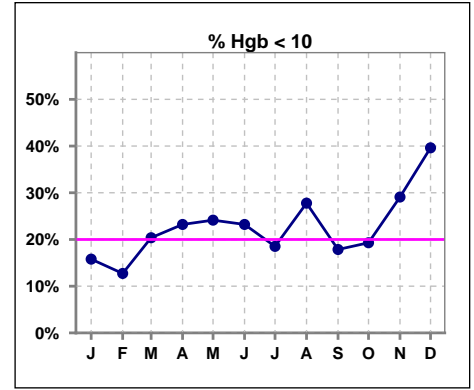


	Jan	Feb	Mar	Apr	May	Jun	Jul	Aug	Sep	Oct	Nov	Dec
# Fistula	48	49	47	48	50	49	49	48	49	50	49	48
# Fistula > 3 yrs	24	24	22	23	22	22	23	24	26	26	25	23
% Fistula > 3 yrs	50%	49%	47%	48%	44%	45%	47%	50%	53%	52%	51%	48%

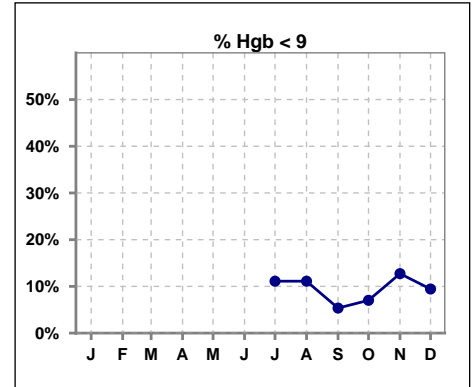


V. ANEMIA

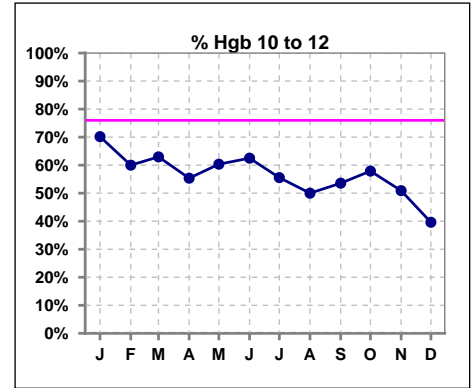
	Jan	Feb	Mar	Apr	May	Jun	Jul	Aug	Sep	Oct	Nov	Dec
# Hgb	57	55	54	56	58	56	54	54	56	57	55	53
# Hgb < 10	9	7	11	13	14	13	10	15	10	11	16	21
Pop. Mean	10.8	11.1	10.9	10.9	10.9	10.9	11.1	11.0	11.2	11.0	10.9	10.7
Std. Deviation	1.2	1.4	1.3	1.4	1.4	1.4	1.6	1.6	1.5	1.5	1.6	1.5
% Hgb < 10	16%	13%	20%	23%	24%	23%	19%	28%	18%	19%	29%	40%



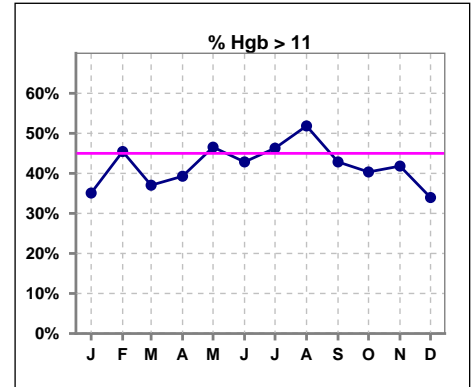
	Jan	Feb	Mar	Apr	May	Jun	Jul	Aug	Sep	Oct	Nov	Dec
# Hgb							54	54	56	57	55	53
# Hgb < 9							6	6	3	4	7	5
Pop. Mean							11.1	11.0	11.2	11.0	10.9	10.7
Std. Deviation							1.6	1.6	1.5	1.5	1.6	1.5
% Hgb < 9							11%	11%	5%	7%	13%	9%



	Jan	Feb	Mar	Apr	May	Jun	Jul	Aug	Sep	Oct	Nov	Dec
# Hgb	57	55	54	56	58	56	54	54	56	57	55	53
# Hgb 10 to 12	40	33	34	31	35	35	30	27	30	33	28	21
Pop. Mean	10.8	11.1	10.9	10.9	10.9	10.9	11.1	11.0	11.2	11.0	10.9	10.7
Std. Deviation	1.2	1.4	1.3	1.4	1.4	1.4	1.6	1.6	1.5	1.5	1.6	1.5
% Hgb 10 to 12	70%	60%	63%	55%	60%	63%	56%	50%	54%	58%	51%	40%

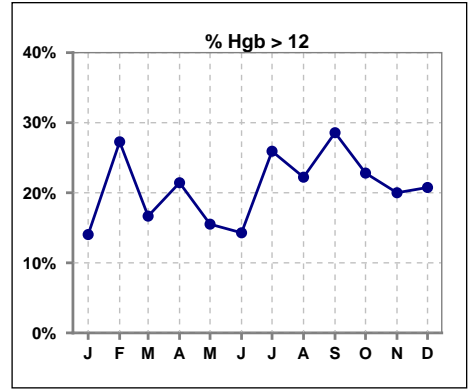


	Jan	Feb	Mar	Apr	May	Jun	Jul	Aug	Sep	Oct	Nov	Dec
# Hgb	57	55	54	56	58	56	54	54	56	57	55	53
# Hgb > 11	20	25	20	22	27	24	25	28	24	23	23	18
Pop. Mean	10.8	11.1	10.9	10.9	10.9	10.9	11.1	11.0	11.2	11.0	10.9	10.7
Std. Deviation	1.2	1.4	1.3	1.4	1.4	1.4	1.6	1.6	1.5	1.5	1.6	1.5
% Hgb > 11	35%	45%	37%	39%	47%	43%	46%	52%	43%	40%	42%	34%



V. ANEMIA - CONT.

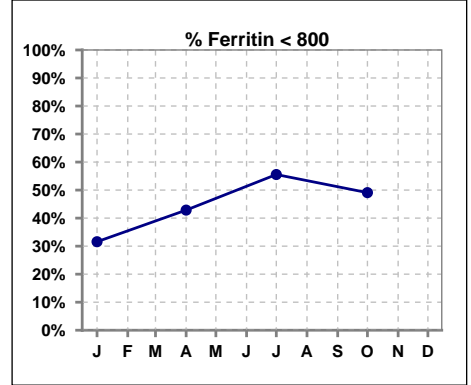
	Jan	Feb	Mar	Apr	May	Jun	Jul	Aug	Sep	Oct	Nov	Dec
# Hgb	57	55	54	56	58	56	54	54	56	57	55	53
# Hgb > 12	8	15	9	12	9	8	14	12	16	13	11	11
Pop. Mean	10.8	11.1	10.9	10.9	10.9	10.9	11.1	11.0	11.2	11.0	10.9	10.7
Std. Deviation	1.2	1.4	1.3	1.4	1.4	1.4	1.6	1.6	1.5	1.5	1.6	1.5
% Hgb > 12	14%	27%	17%	21%	16%	14%	26%	22%	29%	23%	20%	21%



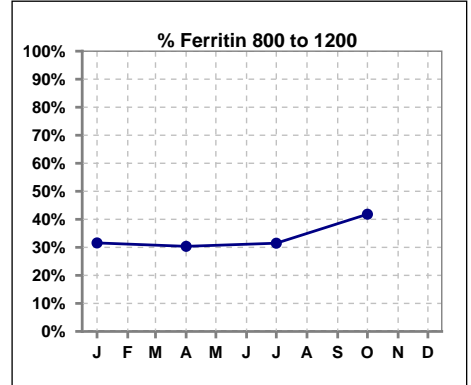
V. ANEMIA - CONT.

Iron Profile

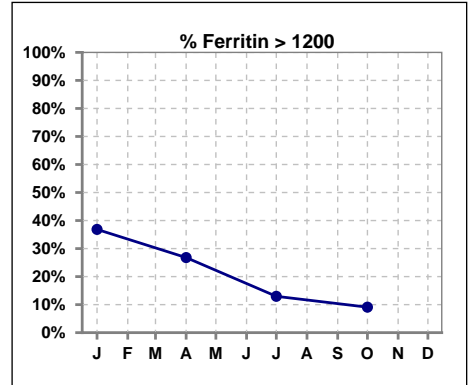
	Jan	Feb	Mar	Apr	May	Jun	Jul	Aug	Sep	Oct	Nov	Dec
# Ferritin	57			56			54			55		
# Ferritin < 800	18			24			30			27		
Pop. Mean	1036			932			773			757		
Std. Deviation	553			545			441			373		
% Ferritin < 800	32%			43%			56%			49%		



	Jan	Feb	Mar	Apr	May	Jun	Jul	Aug	Sep	Oct	Nov	Dec
# Ferritin	57			56			54			55		
# Ferritin 800 to 1200	18			17			17			23		
Pop. Mean	1036			932			773			757		
Std. Deviation	553			545			441			373		
% Ferritin 800 to 1200	32%			30%			31%			42%		

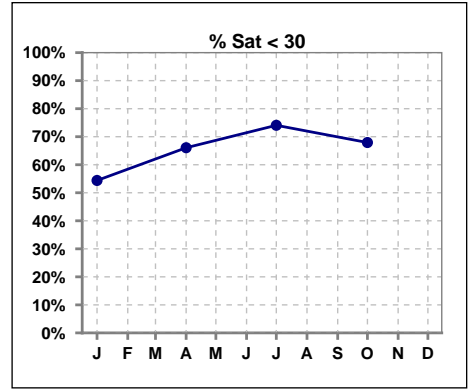


	Jan	Feb	Mar	Apr	May	Jun	Jul	Aug	Sep	Oct	Nov	Dec
# Ferritin	57			56			54			55		
# Ferritin > 1200	21			15			7			5		
Pop. Mean	1036			932			773			757		
Std. Deviation	553			545			441			373		
% Ferritin > 1200	37%			27%			13%			9%		

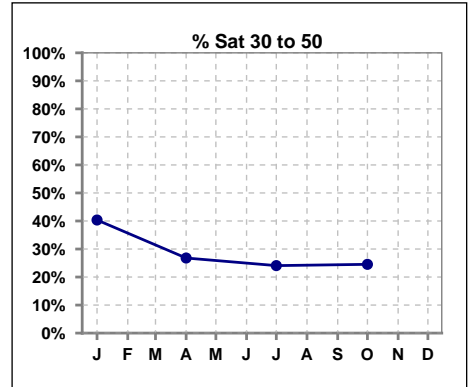


V. ANEMIA - CONT.

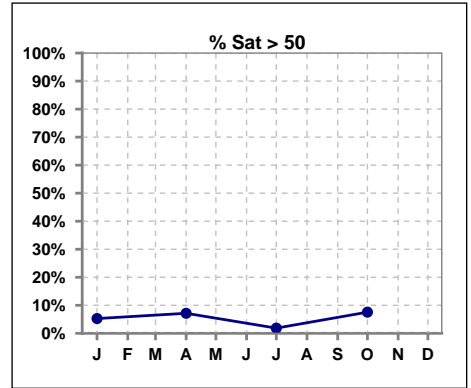
	Jan	Feb	Mar	Apr	May	Jun	Jul	Aug	Sep	Oct	Nov	Dec
# % Sat	57			56			54			53		
# % Sat < 30	31			37			40			36		
Pop. Mean	30			28			25			26		
Std. Deviation	15			16			10			11		
% % Sat < 30	54%			66%			74%			68%		



	Jan	Feb	Mar	Apr	May	Jun	Jul	Aug	Sep	Oct	Nov	Dec
# % Sat	57			56			54			53		
# % Sat 30 to 50	23			15			13			13		
Pop. Mean	30			28			25			26		
Std. Deviation	15			16			10			11		
% Sat% 30 to 50	40%			27%			24%			25%		

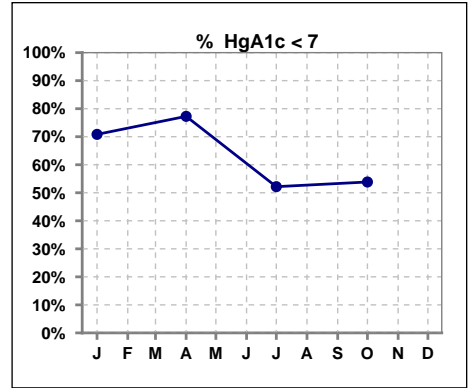


	Jan	Feb	Mar	Apr	May	Jun	Jul	Aug	Sep	Oct	Nov	Dec
# % Sat	57			56			54			53		
# % Sat > 50	3			4			1			4		
Pop. Mean	30			28			25			26		
Std. Deviation	15			16			10			11		
% % Sat > 50	5%			7%			2%			8%		



VI. Diabetes

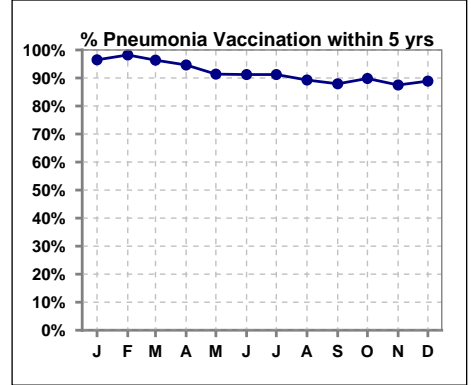
	Jan	Feb	Mar	Apr	May	Jun	Jul	Aug	Sep	Oct	Nov	Dec
# HgA1c	24			22			23			26		
# HgA1c < 7	17			17			12			14		
Pop. Mean	6.5			6.4			6.8			7.0		
Std. Deviation	1.03			1.11			1.22			1.24		
% HgA1c < 7	71%			77%			52%			54%		



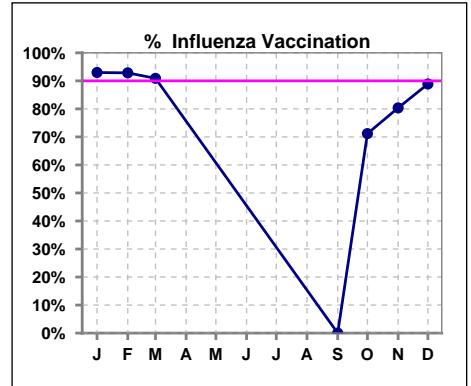
VII. Infection Control

Pneumonia vaccination within the past five years

	Jan	Feb	Mar	Apr	May	Jun	Jul	Aug	Sep	Oct	Nov	Dec
# Patient	57	56	55	56	58	57	57	56	58	59	56	54
# Pneumonia	55	55	53	53	53	52	52	50	51	53	49	48
% Pneumonia	96%	98%	96%	95%	91%	91%	91%	89%	88%	90%	88%	89%



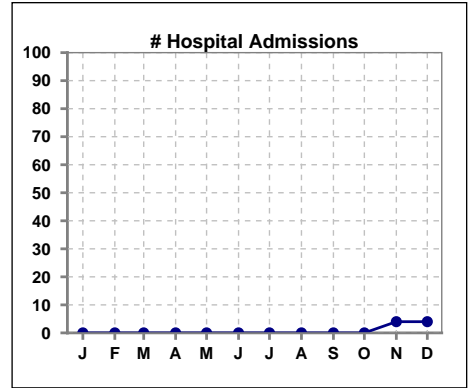
	Jan	Feb	Mar	Apr	May	Jun	Jul	Aug	Sep	Oct	Nov	Dec
# Patient	57	56	55						58	59	56	54
# Influenza	53	52	50						0	42	45	48
% Influenza	93%	93%	91%						0%	71%	80%	89%



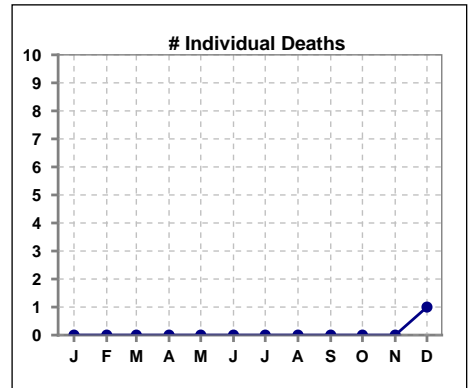
Methodology: a) All labs for 'Adequacy of Dialysis', 'Nutrition', 'Osteodystrophy' and 'Anemia' based on last value of month; b) Access data takes last access of month; c) Values for 'Infection Control' uses most recent result.

VIII. Outcome measures

	Jan	Feb	Mar	Apr	May	Jun	Jul	Aug	Sep	Oct	Nov	Dec
# Patient	0	0	0	0	0	0	0	0	0	0	56	54
# Hospital Admissions	0	0	0	0	0	0	0	0	0	0	4	4



	Jan	Feb	Mar	Apr	May	Jun	Jul	Aug	Sep	Oct	Nov	Dec
# Patient	0	0	0	0	0	0	0	0	0	0	56	54
# Individual Deaths	0	0	0	0	0	0	0	0	0	0	0	1



	Jan	Feb	Mar	Apr	May	Jun	Jul	Aug	Sep	Oct	Nov	Dec
# Patient	57	56	55	56	58	57	57	56	58	59	56	54
# Transplants	0	1	0	0	0	1	0	0	0	0	1	0

