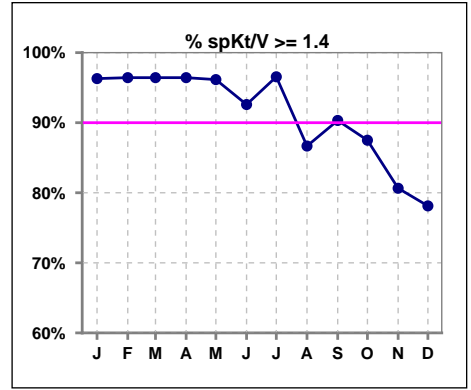
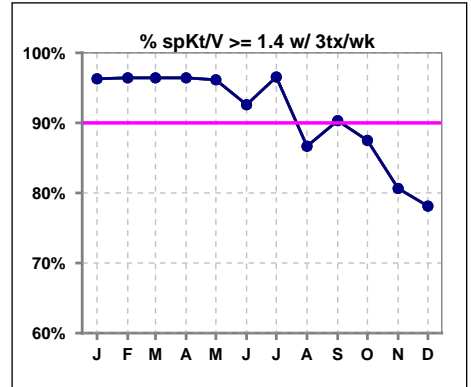


I. ADEQUACY OF DIALYSIS

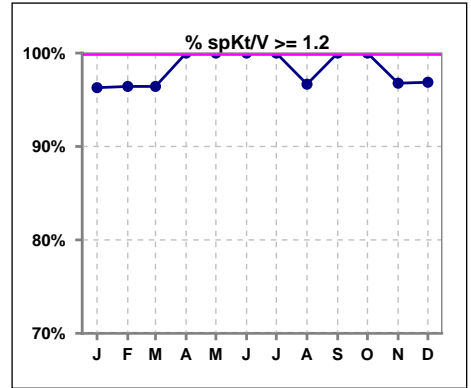
	Jan	Feb	Mar	Apr	May	Jun	Jul	Aug	Sep	Oct	Nov	Dec
# spKt/V	27	28	28	28	26	27	29	30	31	32	31	32
# spKt/V >= 1.4	26	27	27	27	25	25	28	26	28	28	25	25
Pop. Mean	1.71	1.71	1.71	1.71	1.67	1.67	1.72	1.67	1.63	1.62	1.67	1.64
Std. Deviation	0.29	0.25	0.31	0.27	0.24	0.25	0.22	0.29	0.24	0.21	0.29	0.29
% spKt/V >= 1.4	96%	96%	96%	96%	96%	93%	97%	87%	90%	88%	81%	78%



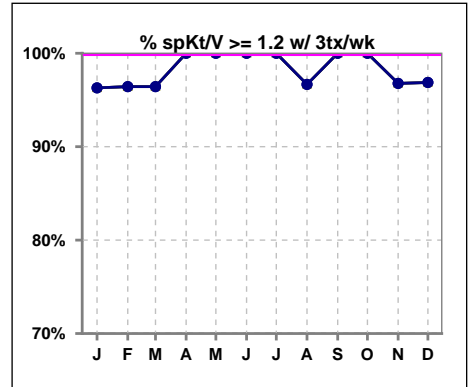
	Jan	Feb	Mar	Apr	May	Jun	Jul	Aug	Sep	Oct	Nov	Dec
# spKt/V w/ 3tx/wk	27	28	28	28	26	27	29	30	31	32	31	32
# spKt/V >= 1.4 w/3tx/wk	26	27	27	27	25	25	28	26	28	28	25	25
Pop. Mean	1.71	1.71	1.71	1.71	1.67	1.67	1.72	1.67	1.63	1.62	1.67	1.64
Std. Deviation	0.29	0.25	0.31	0.27	0.24	0.25	0.22	0.29	0.24	0.21	0.29	0.29
% >= 1.4 w/3tx/wk	96%	96%	96%	96%	96%	93%	97%	87%	90%	88%	81%	78%



	Jan	Feb	Mar	Apr	May	Jun	Jul	Aug	Sep	Oct	Nov	Dec
# spKt/V	27	28	28	28	26	27	29	30	31	32	31	32
# spKt/V >= 1.2	26	27	27	28	26	27	29	29	31	32	30	31
Pop. Mean	1.71	1.71	1.71	1.71	1.67	1.67	1.72	1.67	1.63	1.62	1.67	1.64
Std. Deviation	0.29	0.25	0.31	0.27	0.24	0.25	0.22	0.29	0.24	0.21	0.29	0.29
% spKt/V >= 1.2	96%	96%	96%	100%	100%	100%	100%	97%	100%	100%	97%	97%



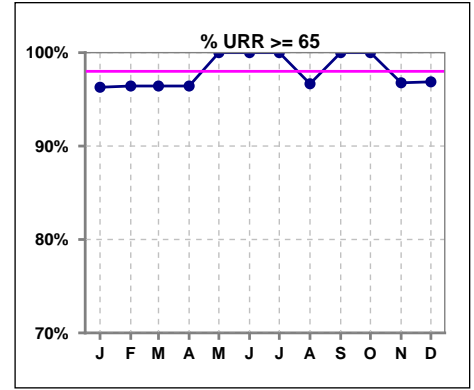
	Jan	Feb	Mar	Apr	May	Jun	Jul	Aug	Sep	Oct	Nov	Dec
# spKt/V w/ 3tx/wk	27	28	28	28	26	27	29	30	31	32	31	32
# spKt/V >= 1.2 w/3tx/wk	26	27	27	28	26	27	29	29	31	32	30	31
Pop. Mean	1.71	1.71	1.71	1.71	1.67	1.67	1.72	1.67	1.63	1.62	1.67	1.64
Std. Deviation	0.29	0.25	0.31	0.27	0.24	0.25	0.22	0.29	0.24	0.21	0.29	0.29
% >= 1.2 w/3tx/wk	96%	96%	96%	100%	100%	100%	100%	97%	100%	100%	97%	97%



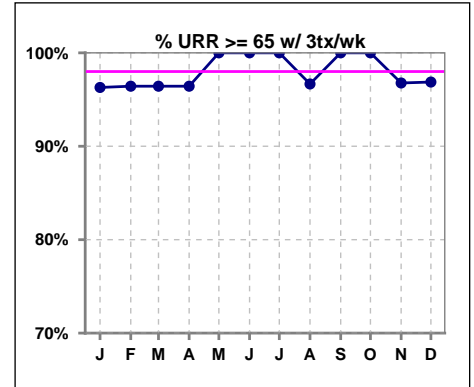
Methodology: a) All labs for 'Adequacy of Dialysis', 'Nutrition', 'Osteodystrophy', 'Anemia' and 'Diabetes' based on last value of month; b) BP's and #L processed are average of all values for month; c) Access data takes last access of month; d) Values for SGA and 'Infection Control' use most recent result.

I. ADEQUACY OF DIALYSIS - CONT.

	Jan	Feb	Mar	Apr	May	Jun	Jul	Aug	Sep	Oct	Nov	Dec
# URR	27	28	28	28	26	27	29	30	31	32	31	32
# URR >= 65	26	27	27	27	26	27	29	29	31	32	30	31
Pop. Mean	77	77	77	77	76	76	77	76	76	75	76	76
Std. Deviation	5.09	4.75	6.19	4.84	4.24	4.50	4.27	6.51	4.49	4.40	5.46	5.82
% URR >= 65	96%	96%	96%	96%	100%	100%	100%	97%	100%	100%	97%	97%



	Jan	Feb	Mar	Apr	May	Jun	Jul	Aug	Sep	Oct	Nov	Dec
# URR w/ 3tx/wk	27	28	28	28	26	27	29	30	31	32	31	32
# URR>=65 w/ 3tx/wk	26	27	27	27	26	27	29	29	31	32	30	31
Pop. Mean	77	77	77	77	76	76	77	76	76	75	76	76
Std. Deviation	5.09	4.75	6.19	4.84	4.24	4.50	4.27	6.51	4.49	4.40	5.46	5.82
% URR>=65 w/ 3tx/wk	96%	96%	96%	96%	100%	100%	100%	97%	100%	100%	97%	97%

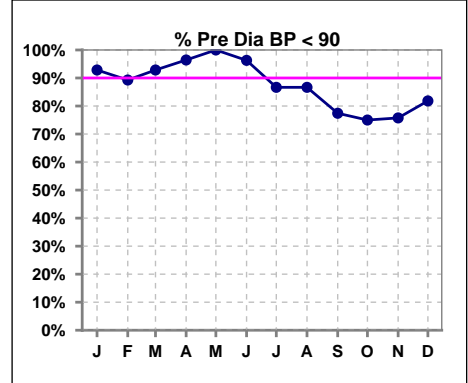


Methodology: a) All labs for 'Adequacy of Dialysis', 'Nutrition', 'Osteodystrophy', 'Anemia' and 'Diabetes' based on last value of month; b) BP's and #L processed are average of all values for month; c) Access data takes last access of month; d) Values for SGA and 'Infection Control' use most recent result.

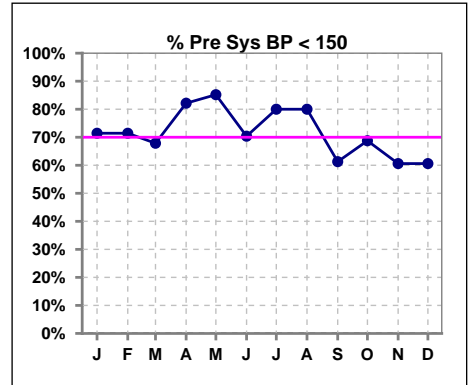
I. ADEQUACY OF DIALYSIS - CONT.

Blood Pressure Control (Pre)

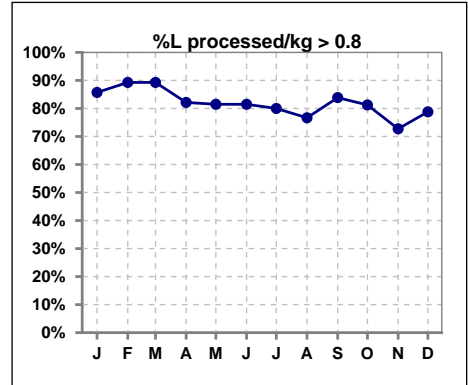
	Jan	Feb	Mar	Apr	May	Jun	Jul	Aug	Sep	Oct	Nov	Dec
# Pre Dia BP	28	28	28	28	27	27	30	30	31	32	33	33
# Pre Dia BP < 90	26	25	26	27	27	26	26	26	24	24	25	27
Pop. Mean	73	75	75	74	74	72	74	74	77	77	76	78
Std. Deviation	12.2	11.4	9.8	9.5	10.1	11.4	13.0	12.5	12.4	12.9	14.2	13.0
% Pre Dia BP < 90	93%	89%	93%	96%	100%	96%	87%	87%	77%	75%	76%	82%



	Jan	Feb	Mar	Apr	May	Jun	Jul	Aug	Sep	Oct	Nov	Dec
# Pre Sys BP	28	28	28	28	27	27	30	30	31	32	33	33
# Pre Sys BP < 150	20	20	19	23	23	19	24	24	19	22	20	20
Pop. Mean	137	142	140	138	137	137	137	138	141	141	143	145
Std. Deviation	23.9	22.5	20.1	19.0	21.9	19.7	18.2	19.4	18.3	17.9	20.5	20.4
%Pre Sys BP <150	71%	71%	68%	82%	85%	70%	80%	80%	61%	69%	61%	61%



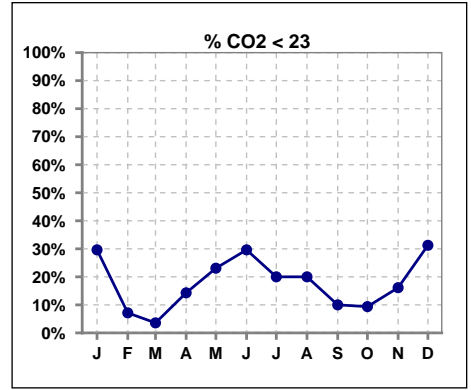
	Jan	Feb	Mar	Apr	May	Jun	Jul	Aug	Sep	Oct	Nov	Dec
# L processed/kg	28	28	28	28	27	27	30	30	31	32	33	33
# L processed/kg>0.8	24	25	25	23	22	22	24	23	26	26	24	26
Pop. Mean	1	1	1	1	1	1	1	1	1	1	1	1
Std. Deviation	0.3	0.3	0.3	0.3	0.3	0.2	0.2	0.3	0.2	0.2	0.2	0.3
% L processed/kg>0.8	86%	89%	89%	82%	81%	81%	80%	77%	84%	81%	73%	79%



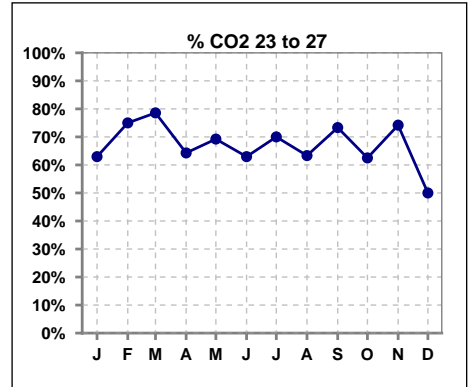
Methodology: a) All labs for 'Adequacy of Dialysis', 'Nutrition', 'Osteodystrophy', 'Anemia' and 'Diabetes' based on last value of month; b) BP's and #L processed are average of all values for month; c) Access data takes last access of month; d) Values for SGA and 'Infection Control' use most recent result.

I. ADEQUACY OF DIALYSIS - CONT.

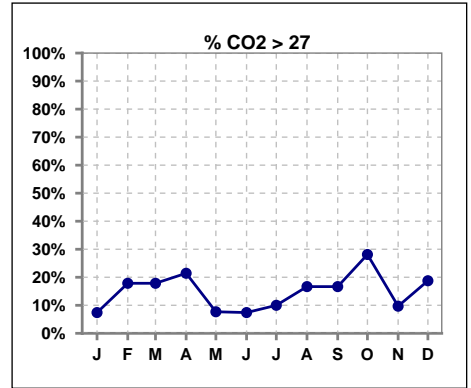
	Jan	Feb	Mar	Apr	May	Jun	Jul	Aug	Sep	Oct	Nov	Dec
# CO2	27	28	28	28	26	27	30	30	30	32	31	32
# CO2 < 23	8	2	1	4	6	8	6	6	3	3	5	10
Pop. Mean	24	26	26	25	24	24	25	25	25	26	25	25
Std. Deviation	2.57	2.31	1.78	2.36	2.42	2.50	2.18	2.60	2.04	2.66	2.50	2.85
% CO2 < 23	30%	7%	4%	14%	23%	30%	20%	20%	10%	9%	16%	31%



	Jan	Feb	Mar	Apr	May	Jun	Jul	Aug	Sep	Oct	Nov	Dec
# CO2	27	28	28	28	26	27	30	30	30	32	31	32
# CO2 23 to 27	17	21	22	18	18	17	21	19	22	20	23	16
Pop. Mean	24	26	26	25	24	24	25	25	25	26	25	25
Std. Deviation	2.57	2.31	1.78	2.36	2.42	2.50	2.18	2.60	2.04	2.66	2.50	2.85
% CO2 23 to 27	63%	75%	79%	64%	69%	63%	70%	63%	73%	63%	74%	50%



	Jan	Feb	Mar	Apr	May	Jun	Jul	Aug	Sep	Oct	Nov	Dec
# CO2	27	28	28	28	26	27	30	30	30	32	31	32
# CO2 > 27	2	5	5	6	2	2	3	5	5	9	3	6
Pop. Mean	24	26	26	25	24	24	25	25	25	26	25	25
Std. Deviation	2.57	2.31	1.78	2.36	2.42	2.50	2.18	2.60	2.04	2.66	2.50	2.85
% CO2 > 27	7%	18%	18%	21%	8%	7%	10%	17%	17%	28%	10%	19%

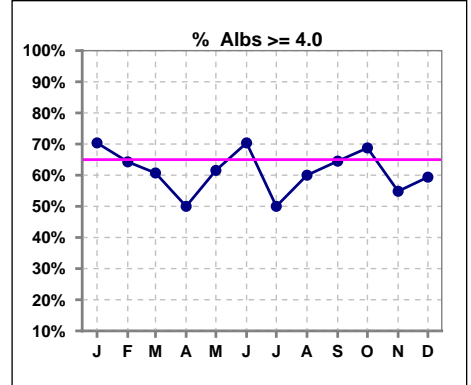


Enumclaw Kidney Center - Center Hemodialysis
Quality Assurance Reports
 Through period ending Dec. 31, 2015

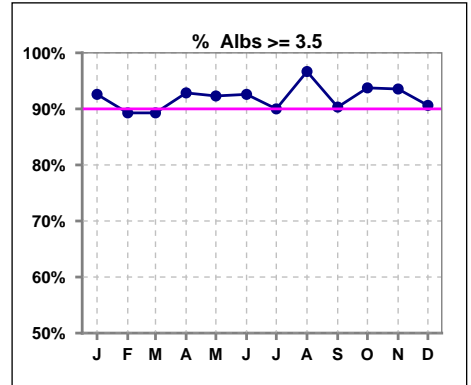
*Albumin values use BCG method - as of July 2001

II. NUTRITION

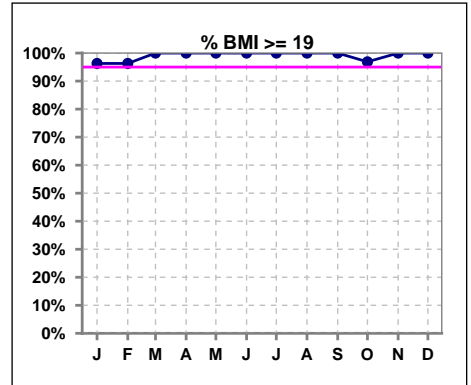
	Jan	Feb	Mar	Apr	May	Jun	Jul	Aug	Sep	Oct	Nov	Dec
# Albumin	27	28	28	28	26	27	30	30	31	32	31	32
# Albumin >= 4.0	19	18	17	14	16	19	15	18	20	22	17	19
Pop. Mean	4.0	4.0	4.0	4.0	4.0	4.1	3.9	4.0	4.0	4.0	4.0	4.0
Std. Deviation	0.34	0.40	0.34	0.30	0.32	0.35	0.37	0.29	0.42	0.37	0.34	0.34
% Alb >= 4.0	70%	64%	61%	50%	62%	70%	50%	60%	65%	69%	55%	59%



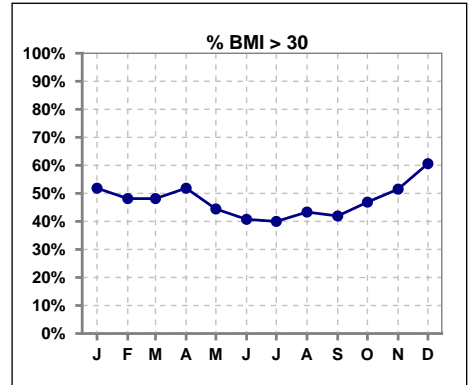
	Jan	Feb	Mar	Apr	May	Jun	Jul	Aug	Sep	Oct	Nov	Dec
# Albumin	27	28	28	28	26	27	30	30	31	32	31	32
# Albumin >= 3.5	25	25	25	26	24	25	27	29	28	30	29	29
Pop. Mean	4.0	4.0	4.0	4.0	4.0	4.1	3.9	4.0	4.0	4.0	4.0	4.0
Std. Deviation	0.34	0.40	0.34	0.30	0.32	0.35	0.37	0.29	0.42	0.37	0.34	0.34
% Alb >= 3.5	93%	89%	89%	93%	92%	93%	90%	97%	90%	94%	94%	91%



	Jan	Feb	Mar	Apr	May	Jun	Jul	Aug	Sep	Oct	Nov	Dec
# BMI	27	27	27	27	27	27	30	30	31	32	33	33
# BMI >= 19	26	26	27	27	27	27	30	30	31	31	33	33
Pop. Mean	31	31	31	31	31	31	31	31	31	31	31	32
Std. Deviation	8.2	8.3	8.3	8.2	8.2	8.4	8.0	8.2	8.1	8.4	8.1	8.3
% BMI >= 19	96%	96%	100%	100%	100%	100%	100%	100%	100%	97%	100%	100%



	Jan	Feb	Mar	Apr	May	Jun	Jul	Aug	Sep	Oct	Nov	Dec
# BMI	27	27	27	27	27	27	30	30	31	32	33	33
# BMI > 30	14	13	13	14	12	11	12	13	13	15	17	20
Pop. Mean	31	31	31	31	31	31	31	31	31	31	31	32
Std. Deviation	8.2	8.3	8.3	8.2	8.2	8.4	8.0	8.2	8.1	8.4	8.1	8.3
% BMI > 30	52%	48%	48%	52%	44%	41%	40%	43%	42%	47%	52%	61%

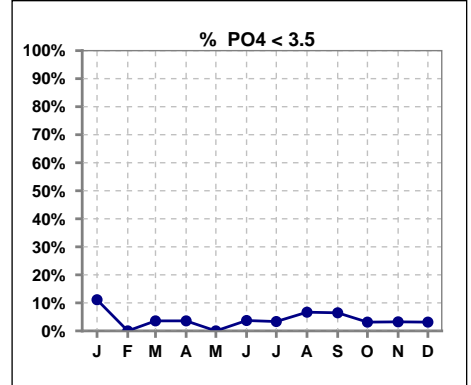


Methodology: a) All labs for 'Adequacy of Dialysis', 'Nutrition', 'Osteodystrophy', 'Anemia' and 'Diabetes' based on last value of month; b) BP's and #L processed are average of all values for month; c) Access data takes last access of month; d) Values for SGA and 'Infection Control' use most recent result.

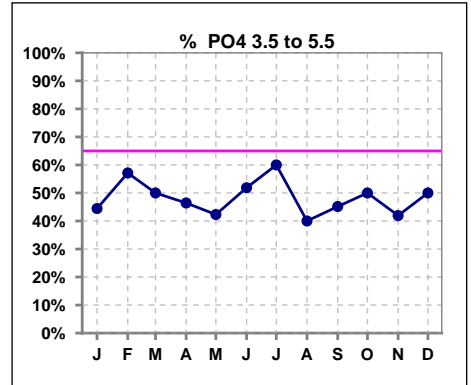
Lab methodology for PTH changed January 2012

III. OSTEODYSTROPHY

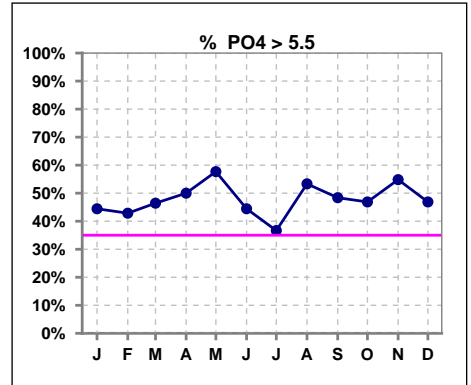
	Jan	Feb	Mar	Apr	May	Jun	Jul	Aug	Sep	Oct	Nov	Dec
# PO4	27	28	28	28	26	27	30	30	31	32	31	32
# PO4 < 3.5	3	0	1	1	0	1	1	2	2	1	1	1
Pop. Mean	5.5	5.8	5.8	6.0	6.0	6.0	5.9	5.9	5.6	5.6	5.9	5.8
Std. Deviation	1.64	1.80	1.85	1.94	1.79	1.91	1.70	1.95	1.60	1.45	1.58	1.83
% PO4 < 3.5	11%	0%	4%	4%	0%	4%	3%	7%	6%	3%	3%	3%



	Jan	Feb	Mar	Apr	May	Jun	Jul	Aug	Sep	Oct	Nov	Dec
# PO4	27	28	28	28	26	27	30	30	31	32	31	32
# PO4 3.5 to 5.5	12	16	14	13	11	14	18	12	14	16	13	16
Pop. Mean	5.5	5.8	5.8	6.0	6.0	6.0	5.9	5.9	5.6	5.6	5.9	5.8
Std. Deviation	1.64	1.80	1.85	1.94	1.79	1.91	1.70	1.95	1.60	1.45	1.58	1.83
% PO4 3.5 to 5.5	44%	57%	50%	46%	42%	52%	60%	40%	45%	50%	42%	50%



	Jan	Feb	Mar	Apr	May	Jun	Jul	Aug	Sep	Oct	Nov	Dec
# PO4	27	28	28	28	26	27	30	30	31	32	31	32
# PO4 > 5.5	12	12	13	14	15	12	11	16	15	15	17	15
Pop. Mean	5.5	5.8	5.8	6.0	6.0	6.0	5.9	5.9	5.6	5.6	5.9	5.8
Std. Deviation	1.64	1.80	1.85	1.94	1.79	1.91	1.70	1.95	1.60	1.45	1.58	1.83
% PO4 > 5.5	44%	43%	46%	50%	58%	44%	37%	53%	48%	47%	55%	47%

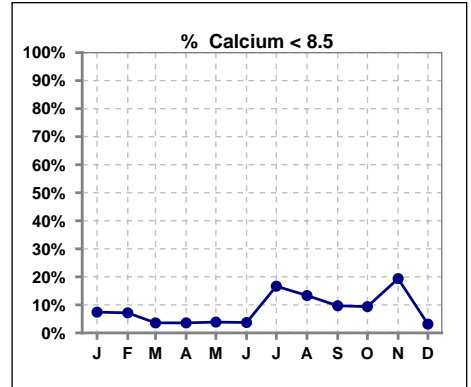


Methodology: a) All labs for 'Adequacy of Dialysis', 'Nutrition', 'Osteodystrophy', 'Anemia' and 'Diabetes' based on last value of month; b) BP's and #L processed are average of all values for month; c) Access data takes last access of month; d) Values for SGA and 'Infection Control' use most recent result.

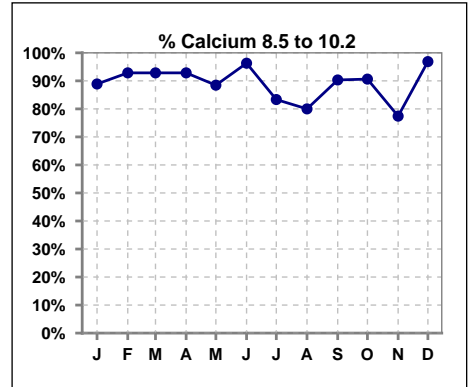
Lab methodology for PTH changed January 2012

III. OSTEODYSTROPHY - CONT.

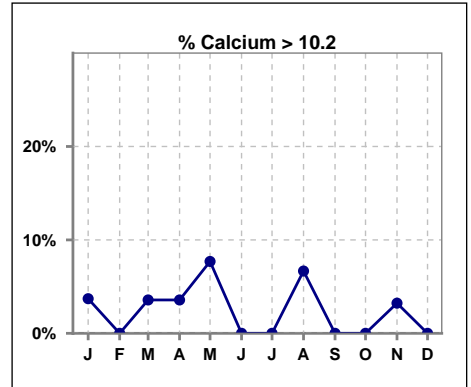
	Jan	Feb	Mar	Apr	May	Jun	Jul	Aug	Sep	Oct	Nov	Dec
# Calcium	27	28	28	28	26	27	30	30	31	32	31	32
# Calcium < 8.5	2	2	1	1	1	1	5	4	3	3	6	1
Pop. Mean	9.4	9.3	9.3	9.3	9.4	9.3	9.1	9.0	9.0	9.2	9.1	9.3
Std. Deviation	0.58	0.51	0.52	0.50	0.51	0.37	0.58	0.79	0.50	0.51	0.69	0.43
% Calcium < 8.5	7%	7%	4%	4%	4%	4%	17%	13%	10%	9%	19%	3%



	Jan	Feb	Mar	Apr	May	Jun	Jul	Aug	Sep	Oct	Nov	Dec
# Calcium	27	28	28	28	26	27	30	30	31	32	31	32
# Calcium 8.5 to 10.2	24	26	26	26	23	26	25	24	28	29	24	31
Pop. Mean	9.4	9.3	9.3	9.3	9.4	9.3	9.1	9.0	9.0	9.2	9.1	9.3
Std. Deviation	0.58	0.51	0.52	0.50	0.51	0.37	0.58	0.79	0.50	0.51	0.69	0.43
% Calcium 8.5 to 10.2	89%	93%	93%	93%	88%	96%	83%	80%	90%	91%	77%	97%



	Jan	Feb	Mar	Apr	May	Jun	Jul	Aug	Sep	Oct	Nov	Dec
# Calcium	27	28	28	28	26	27	30	30	31	32	31	32
# Calcium > 10.2	1	0	1	1	2	0	0	2	0	0	1	0
Pop. Mean	9.4	9.3	9.3	9.3	9.4	9.3	9.1	9.0	9.0	9.2	9.1	9.3
Std. Deviation	0.58	0.51	0.52	0.50	0.51	0.37	0.58	0.79	0.50	0.51	0.69	0.43
% Calcium > 10.2	4%	0%	4%	4%	8%	0%	0%	7%	0%	0%	3%	0%

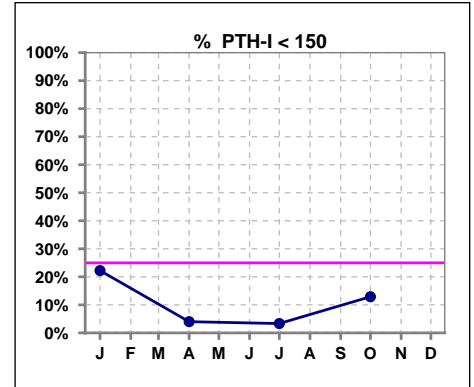


Methodology: a) All labs for 'Adequacy of Dialysis', 'Nutrition', 'Osteodystrophy', 'Anemia' and 'Diabetes' based on last value of month; b) BP's and #L processed are average of all values for month; c) Access data takes last access of month; d) Values for SGA and 'Infection Control' use most recent result.

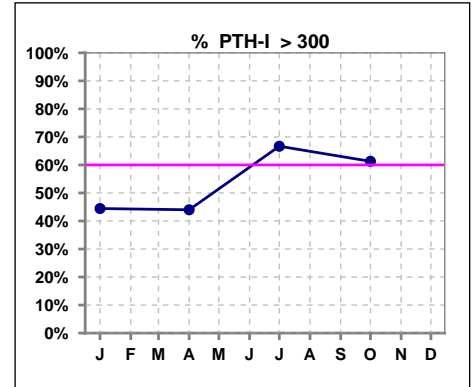
Lab methodology for PTH changed January 2012

III. OSTEODYSTROPHY - CONT.

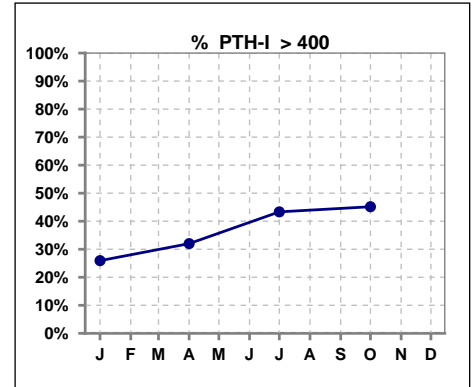
	Jan	Feb	Mar	Apr	May	Jun	Jul	Aug	Sep	Oct	Nov	Dec
# PTH-I	27			25			30			31		
# PTH-I < 150	6			1			1			4		
Pop. Mean	326			354			387			413		
Std. Deviation	209			178			157			263		
% PTH-I < 150	22%			4%			3%			13%		



	Jan	Feb	Mar	Apr	May	Jun	Jul	Aug	Sep	Oct	Nov	Dec
# PTH-I	27			25			30			31		
# PTH-I > 300	12			11			20			19		
Pop. Mean	326			354			387			413		
Std. Deviation	209			178			157			263		
% PTH-I > 300	44%			44%			67%			61%		



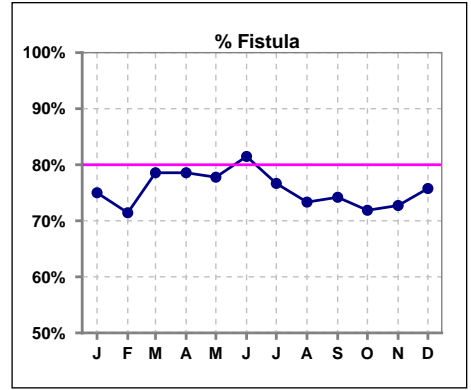
	Jan	Feb	Mar	Apr	May	Jun	Jul	Aug	Sep	Oct	Nov	Dec
# PTH-I	27			25			30			31		
# PTH-I > 400	7			8			13			14		
Pop. Mean	326			354			387			413		
Std. Deviation	209			178			157			263		
% PTH-I > 400	26%			32%			43%			45%		



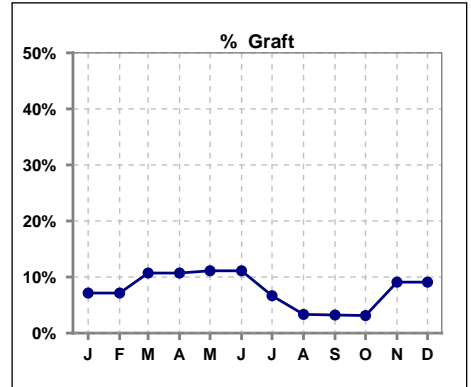
Methodology: a) All labs for 'Adequacy of Dialysis', 'Nutrition', 'Osteodystrophy', 'Anemia' and 'Diabetes' based on last value of month; b) BP's and #L processed are average of all values for month; c) Access data takes last access of month; d) Values for SGA and 'Infection Control' use most recent result.

IV. ACCESS

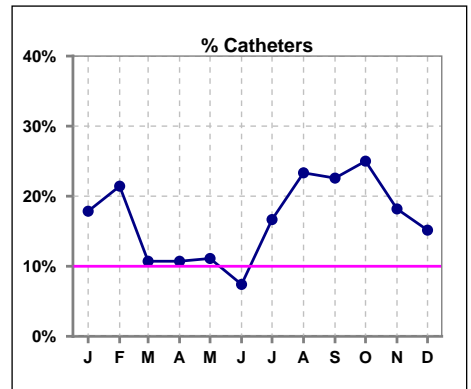
	Jan	Feb	Mar	Apr	May	Jun	Jul	Aug	Sep	Oct	Nov	Dec
# Access	28	28	28	28	27	27	30	30	31	32	33	33
# Fistula	21	20	22	22	21	22	23	22	23	23	24	25
% Fistula	75%	71%	79%	79%	78%	81%	77%	73%	74%	72%	73%	76%



	Jan	Feb	Mar	Apr	May	Jun	Jul	Aug	Sep	Oct	Nov	Dec
# Access	28	28	28	28	27	27	30	30	31	32	33	33
# Graft	2	2	3	3	3	3	2	1	1	1	3	3
% Graft	7%	7%	11%	11%	11%	11%	7%	3%	3%	3%	9%	9%



	Jan	Feb	Mar	Apr	May	Jun	Jul	Aug	Sep	Oct	Nov	Dec
# Access	28	28	28	28	27	27	30	30	31	32	33	33
# Catheters	5	6	3	3	3	2	5	7	7	8	6	5
% Catheters	18%	21%	11%	11%	11%	7%	17%	23%	23%	25%	18%	15%



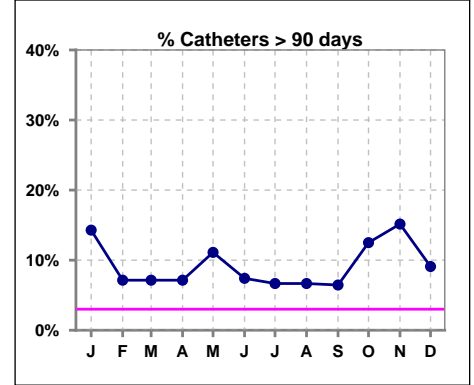
Methodology: a) All labs for 'Adequacy of Dialysis', 'Nutrition', 'Osteodystrophy', 'Anemia' and 'Diabetes' based on last value of month; b) BP's and #L processed are average of all values for month; c) Access data takes last access of month; d) Values for SGA and 'Infection Control' use most recent result.

IV. ACCESS - CONT.

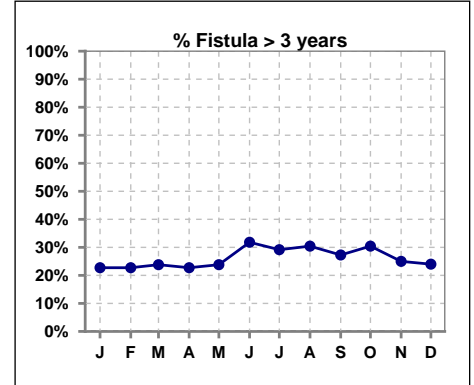
Catheters > 90 days

	Jan	Feb	Mar	Apr	May	Jun	Jul	Aug	Sep	Oct	Nov	Dec
# Access	28	28	28	28	27	27	30	30	31	32	33	33
# Catheters	4	2	2	2	3	2	2	2	2	4	5	3
% Catheters	14%	7%	7%	7%	11%	7%	7%	7%	6%	13%	15%	9%

Definition: Catheter in use on last treatment of the month



	Jan	Feb	Mar	Apr	May	Jun	Jul	Aug	Sep	Oct	Nov	Dec
# Fistula	22	22	21	22	21	22	24	23	22	23	24	25
# Fistula > 3 yrs	5	5	5	5	5	7	7	7	6	7	6	6
% Fistula > 3 yrs	23%	23%	24%	23%	24%	32%	29%	30%	27%	30%	25%	24%



All rates are calculated per 100 patient-month

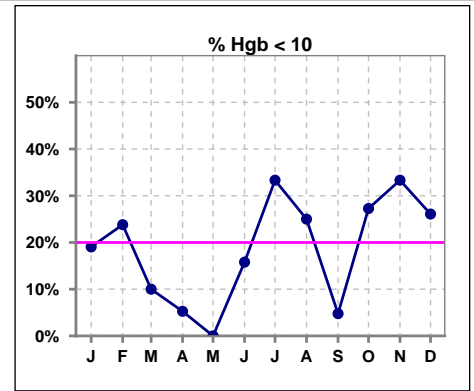
(number of infections/number of accesses x100)

EKC	Total Fistula	Fistula Infected	Fistula ARB Rate	National Rate	Total Grafts	Graft Infected	Graft ARB Rate	National Rate	Total Cath	Cath Infected	Cath ARB Rate	National Rate	Total Accesses	Total Access Infected	All ARB Rate Per 100 pt- Months	National Rate
2014-2015 Month																
Dec	22	0	0.00	0.23	2	0	0.00	0.51	4	0	0.00	2.55	28	0	0.00	
Jan	21	0	0.00	0.23	2	0	0.00	0.51	5	0	0.00	2.55	28	0	0.00	
Feb	21	0	0.00	0.23	1	0	0.00	0.51	5	0	0.00	2.55	27	0	0.00	
Mar	23	0	0.00	0.23	2	0	0.00	0.51	1	0	0.00	2.55	26	0	0.00	
April	23	0	0.00	0.23	3	0	0.00	0.51	1	0	0.00	2.55	27	0	0.00	
May	22	0	0.00	0.23	3	0	0.00	0.51	3	0	0.00	2.55	28	0	0.00	
June	21	0	0.00	0.23	3	0	0.00	0.51	3	0	0.00	2.55	27	0	0.00	
July	22	0	0.00	0.23	2	0	0.00	0.51	2	0	0.00	2.55	26	0	0.00	
Aug	23	0	0.00	0.23	2	0	0.00	0.51	4	0	0.00	2.55	29	0	0.00	
Sept	22	0	0.00	0.23	1	0	0.00	0.51	6	0	0.00	2.55	29	0	0.00	
Oct	24	0	0.00	0.23	1	0	0.00	0.51	4	0	0.00	2.55	29	0	0.00	
Nov	24	0	0.00	0.23	1	0	0.00	0.51	5	0	0.00	2.55	30	0	0.00	
Annual Total:	198	0	0.00	0.23	20	0	0.00	0.51	28	0	0.00	2.55	246	0	0.00	0.88

V. ANEMIA

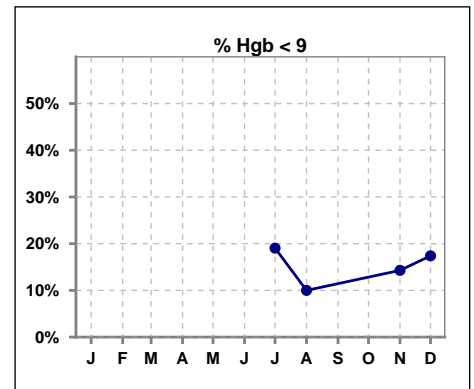
	Jan	Feb	Mar	Apr	May	Jun	Jul	Aug	Sep	Oct	Nov	Dec
# Hgb	21	21	20	19	17	19	21	20	21	22	21	23
# Hgb < 10	4	5	2	1	0	3	7	5	1	6	7	6
Pop. Mean	10.9	10.8	11.0	11.1	11.3	10.5	10.3	10.5	10.8	10.4	10.3	10.3
Std. Deviation	1.1	1.0	0.9	1.1	0.8	0.6	1.3	1.0	0.7	0.8	1.0	1.0
% Hgb < 10	19%	24%	10%	5%	0%	16%	33%	25%	5%	27%	33%	26%

Note: Excludes patients who received no ESA in month.



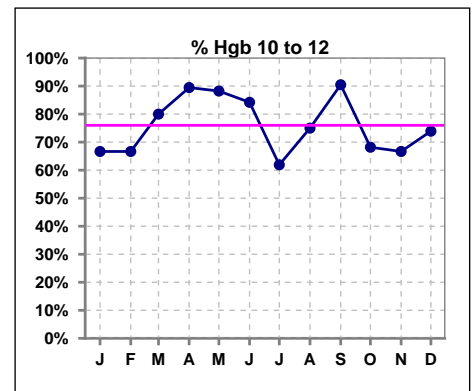
	Jan	Feb	Mar	Apr	May	Jun	Jul	Aug	Sep	Oct	Nov	Dec
# Hgb							21	20	21	22	21	23
# Hgb < 9							4	2			3	4
Pop. Mean							10.3	10.5	10.8	10.4	10.3	10.3
Std. Deviation							1.3	1.0	0.7	0.8	1.0	1.0
% Hgb < 9							19%	10%			14%	17%

Note: Excludes patients who received no ESA in month.



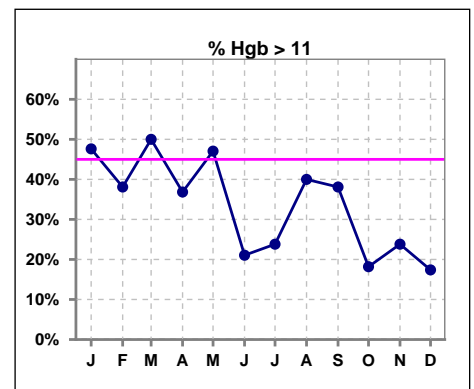
	Jan	Feb	Mar	Apr	May	Jun	Jul	Aug	Sep	Oct	Nov	Dec
# Hgb	21	21	20	19	17	19	21	20	21	22	21	23
# Hgb 10 to 12	14	14	16	17	15	16	13	15	19	15	14	17
Pop. Mean	10.9	10.8	11.0	11.1	11.3	10.5	10.3	10.5	10.8	10.4	10.3	10.3
Std. Deviation	1.1	1.0	0.9	1.1	0.8	0.6	1.3	1.0	0.7	0.8	1.0	1.0
% Hgb 10 to 12	67%	67%	80%	89%	88%	84%	62%	75%	90%	68%	67%	74%

Note: Excludes patients who received no ESA in month.



	Jan	Feb	Mar	Apr	May	Jun	Jul	Aug	Sep	Oct	Nov	Dec
# Hgb	21	21	20	19	17	19	21	20	21	22	21	23
# Hgb > 11	10	8	10	7	8	4	5	8	8	4	5	4
Pop. Mean	10.9	10.8	11.0	11.1	11.3	10.5	10.3	10.5	10.8	10.4	10.3	10.3
Std. Deviation	1.1	1.0	0.9	1.1	0.8	0.6	1.3	1.0	0.7	0.8	1.0	1.0
% Hgb > 11	48%	38%	50%	37%	47%	21%	24%	40%	38%	18%	24%	17%

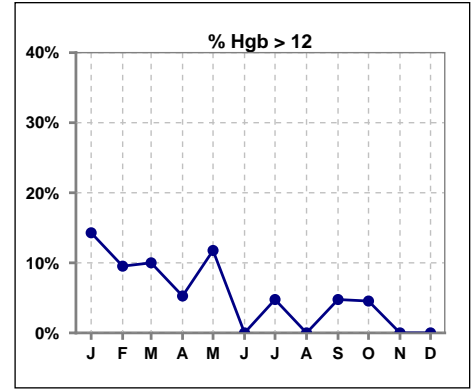
Note: Excludes patients who received no ESA in month.



V. ANEMIA - CONT.

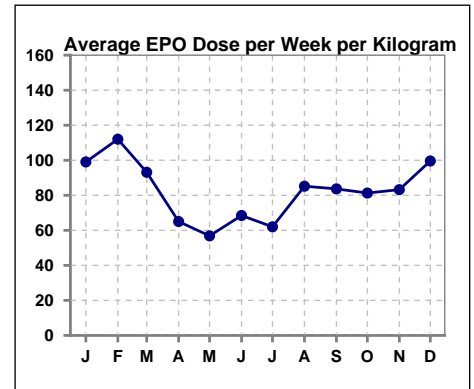
	Jan	Feb	Mar	Apr	May	Jun	Jul	Aug	Sep	Oct	Nov	Dec
# Hgb	21	21	20	19	17	19	21	20	21	22	21	23
# Hgb > 12	3	2	2	1	2	0	1	0	1	1	0	0
Pop. Mean	10.9	10.8	11.0	11.1	11.3	10.5	10.3	10.5	10.8	10.4	10.3	10.3
Std. Deviation	1.1	1.0	0.9	1.1	0.8	0.6	1.3	1.0	0.7	0.8	1.0	1.0
% Hgb > 12	14%	10%	10%	5%	12%	0%	5%	0%	5%	5%	0%	0%

Note: Excludes patients who received no ESA in month.



Average EPO Dose per Week per Kilogram

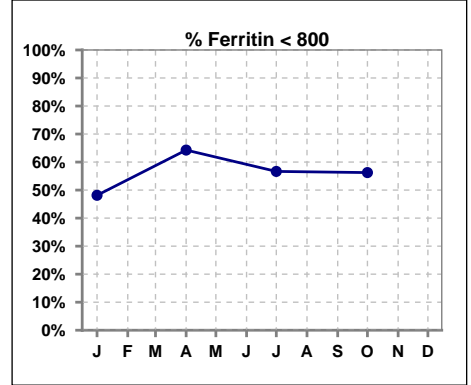
	Jan	Feb	Mar	Apr	May	Jun	Jul	Aug	Sep	Oct	Nov	Dec
# Average EPO	99.0	112.0	93.1	65.0	56.8	68.5	62.0	85.2	83.7	81.3	83.2	99.6



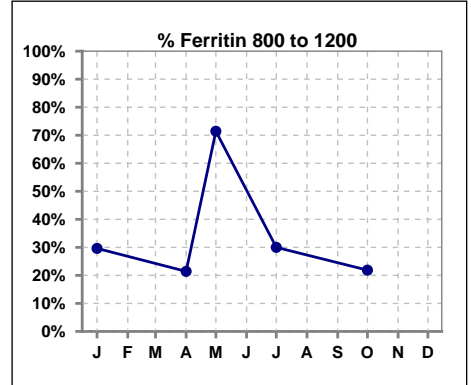
V. ANEMIA - CONT.

Iron Profile

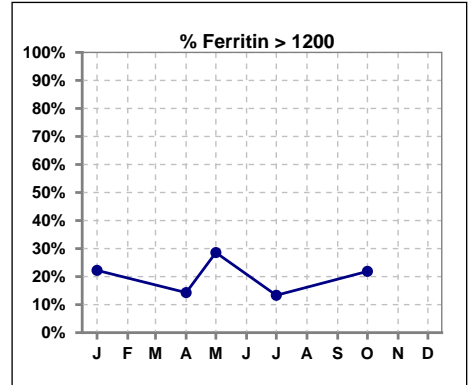
	Jan	Feb	Mar	Apr	May	Jun	Jul	Aug	Sep	Oct	Nov	Dec
# Ferritin	27			28	7		30			32		
# Ferritin < 800	13			18			17			18		
Pop. Mean	881			775	1067		786			815		
Std. Deviation	427			378	209		340			478		
% Ferritin < 800	48%			64%			57%			56%		



	Jan	Feb	Mar	Apr	May	Jun	Jul	Aug	Sep	Oct	Nov	Dec
# Ferritin	27			28	7		30			32		
# Ferritin 800 to 1200	8			6	5		9			7		
Pop. Mean	881			775	1067		786			815		
Std. Deviation	427			378	209		340			478		
% Ferritin 800 to 1200	30%			21%	71%		30%			22%		



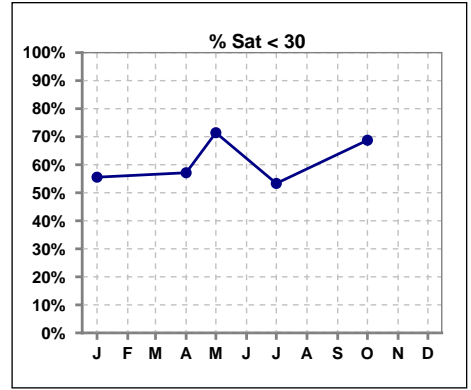
	Jan	Feb	Mar	Apr	May	Jun	Jul	Aug	Sep	Oct	Nov	Dec
# Ferritin	27			28	7		30			32		
# Ferritin > 1200	6			4	2		4			7		
Pop. Mean	881			775	1067		786			815		
Std. Deviation	427			378	209		340			478		
% Ferritin > 1200	22%			14%	29%		13%			22%		



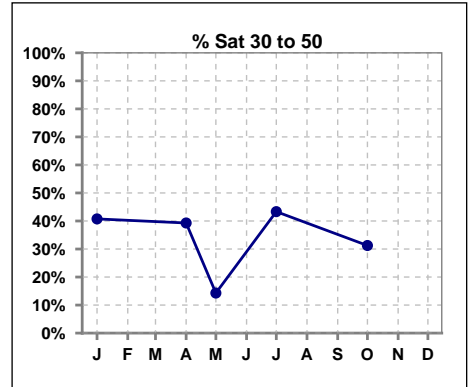
Methodology: a) All labs for 'Adequacy of Dialysis', 'Nutrition', 'Osteodystrophy', 'Anemia' and 'Diabetes' based on last value of month; b) BP's and #L processed are average of all values for month; c) Access data takes last access of month; d) Values for SGA and 'Infection Control' use most recent result.

V. ANEMIA - CONT.

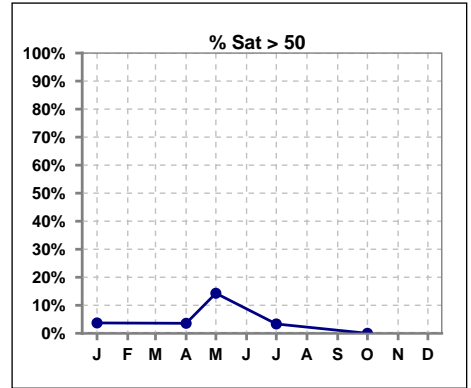
	Jan	Feb	Mar	Apr	May	Jun	Jul	Aug	Sep	Oct	Nov	Dec
# % Sat	27			28	7		30			32		
# % Sat < 30	15			16	5		16			22		
Pop. Mean	30			31	30		29			25		
Std. Deviation	16			14	17		12			9		
% % Sat < 30	56%			57%	71%		53%			69%		



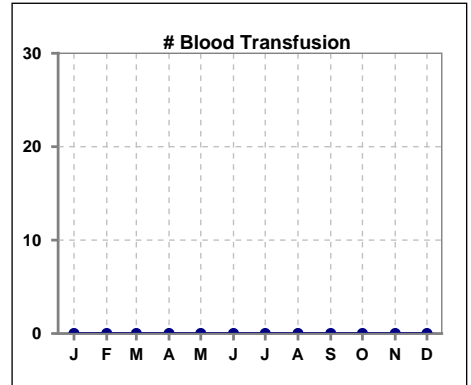
	Jan	Feb	Mar	Apr	May	Jun	Jul	Aug	Sep	Oct	Nov	Dec
# % Sat	27			28	7		30			32		
# % Sat 30 to 50	11			11	1		13			10		
Pop. Mean	30			31	30		29			25		
Std. Deviation	16			14	17		12			9		
% % Sat 30 to 50	41%			39%	14%		43%			31%		



	Jan	Feb	Mar	Apr	May	Jun	Jul	Aug	Sep	Oct	Nov	Dec
# % Sat	27			28	7		30			32		
# % Sat > 50	1			1	1		1			0		
Pop. Mean	30			31	30		29			25		
Std. Deviation	16			14	17		12			9		
% % Sat > 50	4%			4%	14%		3%			0%		



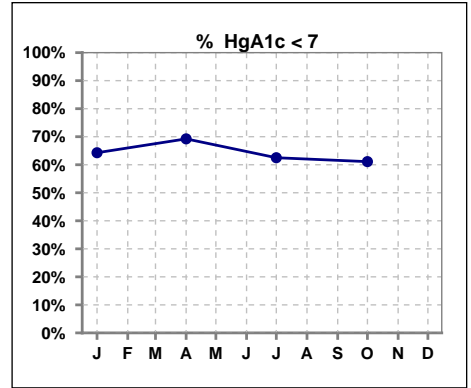
	Jan	Feb	Mar	Apr	May	Jun	Jul	Aug	Sep	Oct	Nov	Dec
# Patient	28	28	28	28	27	27	30	30	31	32	33	33
# Blood Transfusion	0	0	0	0	0	0	0	0	0	0	0	0



Methodology: a) All labs for 'Adequacy of Dialysis', 'Nutrition', 'Osteodystrophy', 'Anemia' and 'Diabetes' based on last value of month; b) BP's and #L processed are average of all values for month; c) Access data takes last access of month; d) Values for SGA and 'Infection Control' use most recent result.

VI. Diabetes

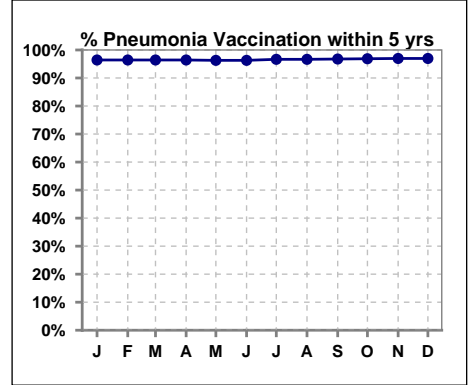
	Jan	Feb	Mar	Apr	May	Jun	Jul	Aug	Sep	Oct	Nov	Dec
# HgA1c	14			13			16			18		
# HgA1c < 7	9			9			10			11		
Pop. Mean	6.4			6.6			6.6			6.7		
Std. Deviation	1.14			1.29			1.21			1.04		
% HgA1c < 7	64%			69%			63%			61%		



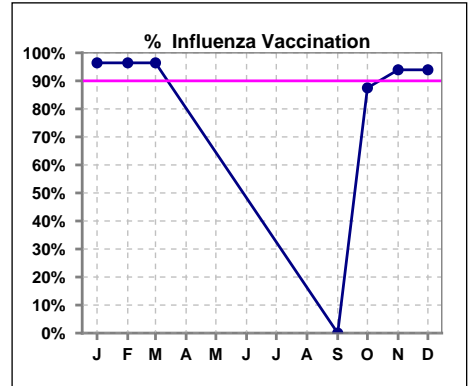
VII. Infection Control

Pneumonia vaccination within the past five years

	Jan	Feb	Mar	Apr	May	Jun	Jul	Aug	Sep	Oct	Nov	Dec
# Patient	28	28	28	28	27	27	30	30	31	32	33	33
# Pneumonia	27	27	27	27	26	26	29	29	30	31	32	32
% Pneumonia	96%	96%	96%	96%	96%	96%	97%	97%	97%	97%	97%	97%



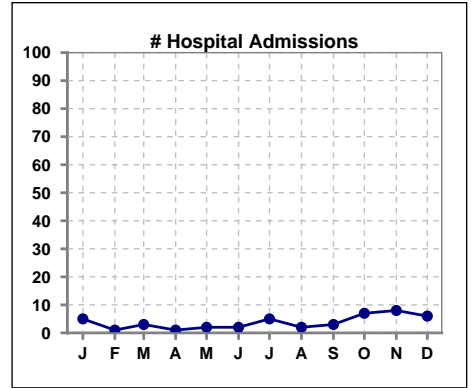
	Jan	Feb	Mar	Apr	May	Jun	Jul	Aug	Sep	Oct	Nov	Dec
# Patient	28	28	28						31	32	33	33
# Influenza	27	27	27						0	28	31	31
% Influenza	96%	96%	96%						0%	88%	94%	94%



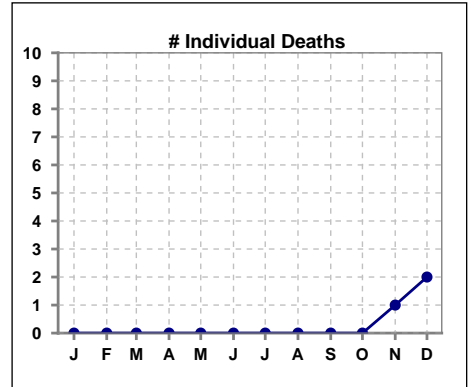
Methodology: a) All labs for 'Adequacy of Dialysis', 'Nutrition', 'Osteodystrophy', 'Anemia' and 'Diabetes' based on last value of month; b) BP's and #L processed are average of all values for month; c) Access data takes last access of month; d) Values for SGA and 'Infection Control' use most recent result.

VIII. Outcome measures

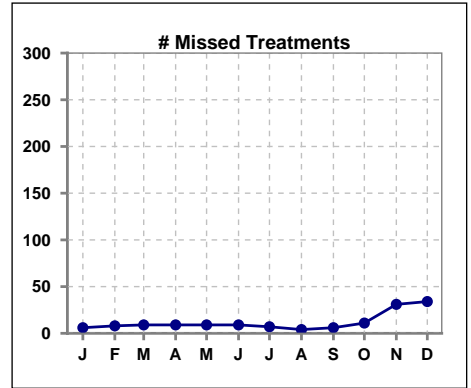
	Jan	Feb	Mar	Apr	May	Jun	Jul	Aug	Sep	Oct	Nov	Dec
# Patient	28	28	28	28	27	27	30	30	31	32	33	33
# Hospital Admissions	5	1	3	1	2	2	5	2	3	7	8	6



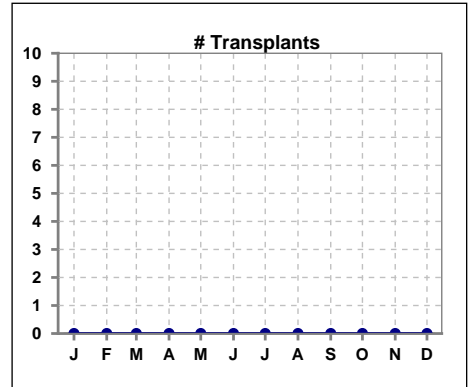
	Jan	Feb	Mar	Apr	May	Jun	Jul	Aug	Sep	Oct	Nov	Dec
# Patient	28	28	28	28	27	27	30	30	31	32	33	33
# Individual Deaths	0	0	0	0	0	0	0	0	0	0	1	2



	Jan	Feb	Mar	Apr	May	Jun	Jul	Aug	Sep	Oct	Nov	Dec
# Patient	28	28	28	28	27	27	30	30	31	32	33	33
# Missed Treatments	6	8	9	9	9	9	7	4	6	11	31	34



	Jan	Feb	Mar	Apr	May	Jun	Jul	Aug	Sep	Oct	Nov	Dec
# Patient	28	28	28	28	27	27	30	30	31	32	33	33
# Transplants	0	0	0	0	0	0	0	0	0	0	0	0



Methodology: a) All labs for 'Adequacy of Dialysis', 'Nutrition', 'Osteodystrophy', 'Anemia' and 'Diabetes' based on last value of month; b) BP's and #L processed are average of all values for month; c) Access data takes last access of month; d) Values for SGA and 'Infection Control' use most recent result.