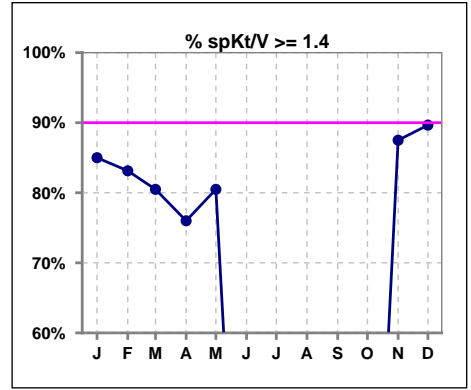
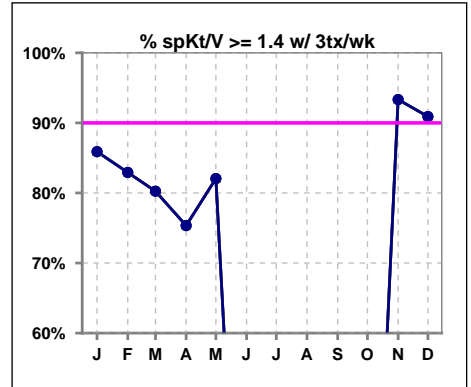


I. ADEQUACY OF DIALYSIS

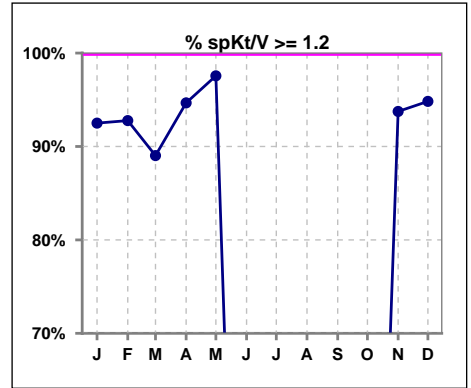
	Jan	Feb	Mar	Apr	May	Jun	Jul	Aug	Sep	Oct	Nov	Dec
# spKt/V	80	83	82	75	41	0	0	0	0	0	32	58
# spKt/V >= 1.4	68	69	66	57	33	0	0	0	0	0	28	52
Pop. Mean	1.67	1.67	1.62	1.60	1.66	0	0	0	0	0	1.66	1.67
Std. Deviation	0.30	0.35	0.34	0.33	0.31	0	0	0	0	0	0.32	0.27
% spKt/V >= 1.4	85%	83%	80%	76%	80%	0%	0%	0%	0%	0%	88%	90%



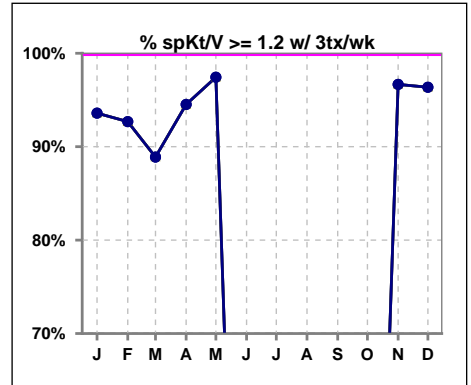
	Jan	Feb	Mar	Apr	May	Jun	Jul	Aug	Sep	Oct	Nov	Dec
# spKt/V w/ 3tx/wk	78	82	81	73	39	0	0	0	0	0	30	55
# spKt/V >= 1.4 w/3tx/wk	67	68	65	55	32	0	0	0	0	0	28	50
Pop. Mean	1.68	1.67	1.62	1.61	1.67	0	0	0	0	0	1.69	1.68
Std. Deviation	0.29	0.35	0.34	0.33	0.31	0	0	0	0	0	0.31	0.27
% >= 1.4 w/3tx/wk	86%	83%	80%	75%	82%	0%	0%	0%	0%	0%	93%	91%



	Jan	Feb	Mar	Apr	May	Jun	Jul	Aug	Sep	Oct	Nov	Dec
# spKt/V	80	83	82	75	41	0	0	0	0	0	32	58
# spKt/V >= 1.2	74	77	73	71	40	0	0	0	0	0	30	55
Pop. Mean	1.67	1.67	1.62	1.60	1.66	0	0	0	0	0	1.66	1.67
Std. Deviation	0.30	0.35	0.34	0.33	0.31	0	0	0	0	0	0.32	0.27
% >= 1.2	93%	93%	89%	95%	98%	0%	0%	0%	0%	0%	94%	95%



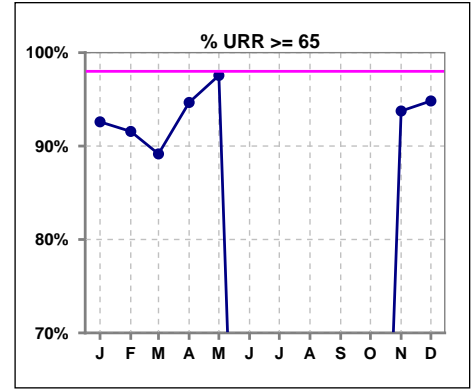
	Jan	Feb	Mar	Apr	May	Jun	Jul	Aug	Sep	Oct	Nov	Dec
# spKt/V w/ 3tx/wk	78	82	81	73	39	0	0	0	0	0	30	55
# spKt/V >= 1.2 w/3tx/wk	73	76	72	69	38	0	0	0	0	0	29	53
Pop. Mean	1.68	1.67	1.62	1.61	1.67	0	0	0	0	0	1.69	1.68
Std. Deviation	0.29	0.35	0.34	0.33	0.31	0	0	0	0	0	0.31	0.27
% >= 1.2 w/3tx/wk	94%	93%	89%	95%	97%	0%	0%	0%	0%	0%	97%	96%



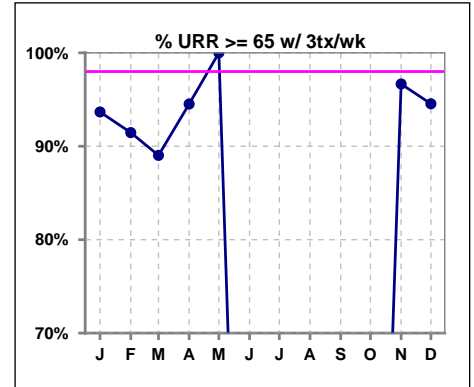
Methodology: a) All labs for 'Adequacy of Dialysis', 'Nutrition', 'Osteodystrophy', 'Anemia' and 'Diabetes' based on last value of month; b) BP's and #L processed are average of all values for month; c) Access data takes last access of month; d) Values for SGA and 'Infection Control' use most recent result.

I. ADEQUACY OF DIALYSIS - CONT.

	Jan	Feb	Mar	Apr	May	Jun	Jul	Aug	Sep	Oct	Nov	Dec
# URR	81	83	83	75	41	0	0	0	0	0	32	58
# URR >= 65	75	76	74	71	40	0	0	0	0	0	30	55
Pop. Mean	76	76	75	74	76	0	0	0	0	0	76	76
Std. Deviation	6.67	7.14	7.64	7.02	6.23	0	0	0	0	0	6.28	5.45
% URR >= 65	93%	92%	89%	95%	98%	0%	0%	0%	0%	0%	94%	95%



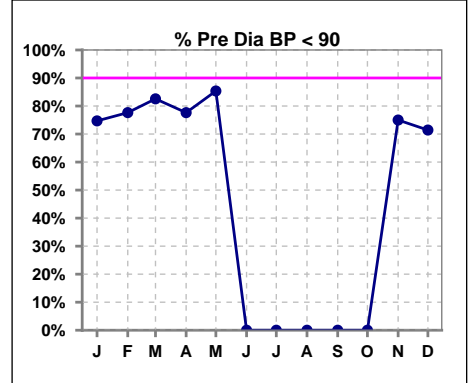
	Jan	Feb	Mar	Apr	May	Jun	Jul	Aug	Sep	Oct	Nov	Dec
# URR w/ 3tx/wk	79	82	82	73	39	0	0	0	0	0	30	55
# URR>=65 w/ 3tx/wk	74	75	73	69	39	0	0	0	0	0	29	52
Pop. Mean	76	76	75	74	76	0	0	0	0	0	76	76
Std. Deviation	6.27	7.17	7.69	7.11	6.04	0	0	0	0	0	5.86	5.39
% URR>=65 w/ 3tx/wk	94%	91%	89%	95%	100%	0%	0%	0%	0%	0%	97%	95%



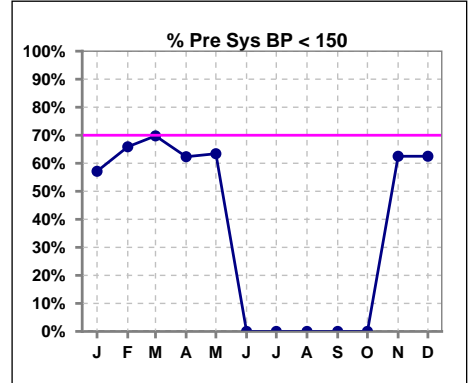
I. ADEQUACY OF DIALYSIS - CONT.

Blood Pressure Control (Pre)

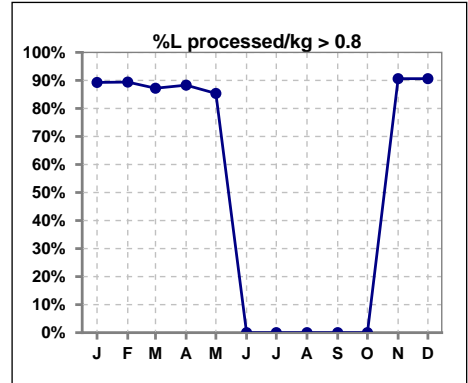
	Jan	Feb	Mar	Apr	May	Jun	Jul	Aug	Sep	Oct	Nov	Dec
# Pre Dia BP	83	85	86	76	41	0	0	0	0	0	32	63
# Pre Dia BP < 90	62	66	71	59	35	0	0	0	0	0	24	45
Pop. Mean	81	80	79	80	78	0	0	0	0	0	80	80
Std. Deviation	14.1	13.0	13.1	13.8	14.0	0	0	0	0	0	13.1	13.6
% Pre Dia BP < 90	75%	78%	83%	78%	85%	0%	0%	0%	0%	0%	75%	71%



	Jan	Feb	Mar	Apr	May	Jun	Jul	Aug	Sep	Oct	Nov	Dec
# Pre Sys BP	84	85	86	77	41	0	0	0	0	0	32	64
# Pre Sys BP < 150	48	56	60	48	26	0	0	0	0	0	20	40
Pop. Mean	148	146	143	145	143	0	0	0	0	0	146	145
Std. Deviation	23.0	21.3	22.2	23.3	24.1	0	0	0	0	0	20.9	20.8
%Pre Sys BP <150	57%	66%	70%	62%	63%	0%	0%	0%	0%	0%	63%	63%



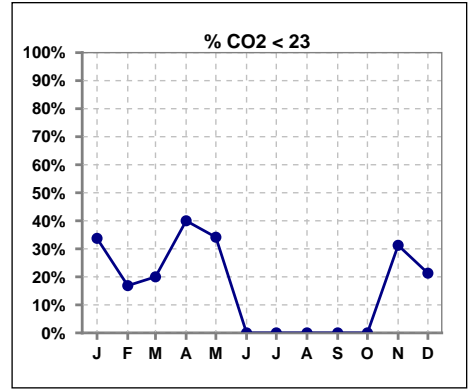
	Jan	Feb	Mar	Apr	May	Jun	Jul	Aug	Sep	Oct	Nov	Dec
# L processed/kg	84	85	86	77	41	0	0	0	0	0	32	64
# L processed/kg>0.8	75	76	75	68	35	0	0	0	0	0	29	58
Pop. Mean	1	1	1	1	1	0	0	0	0	0	1	1
Std. Deviation	0.3	0.3	0.3	0.3	0.3	0	0	0	0	0	0.2	0.2
% L processed/kg>0.8	89%	89%	87%	88%	85%	0%	0%	0%	0%	0%	91%	91%



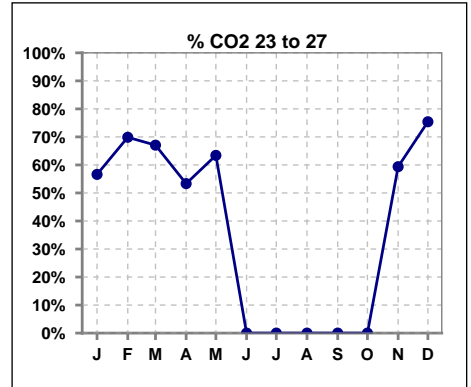
Methodology: a) All labs for 'Adequacy of Dialysis', 'Nutrition', 'Osteodystrophy', 'Anemia' and 'Diabetes' based on last value of month; b) BP's and #L processed are average of all values for month; c) Access data takes last access of month; d) Values for SGA and 'Infection Control' use most recent result.

I. ADEQUACY OF DIALYSIS - CONT.

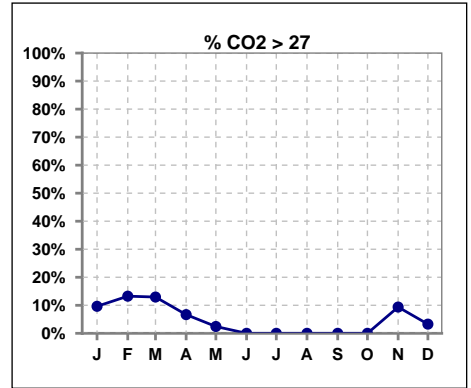
	Jan	Feb	Mar	Apr	May	Jun	Jul	Aug	Sep	Oct	Nov	Dec
# CO2	83	83	85	75	41	0	0	0	0	0	32	61
# CO2 < 23	28	14	17	30	14	0	0	0	0	0	10	13
Pop. Mean	24	24	25	23	23	0	0	0	0	0	24	24
Std. Deviation	2.88	2.97	2.91	2.91	2.92	0	0	0	0	0	2.50	2.38
% CO2 < 23	34%	17%	20%	40%	34%	0%	0%	0%	0%	0%	31%	21%



	Jan	Feb	Mar	Apr	May	Jun	Jul	Aug	Sep	Oct	Nov	Dec
# CO2	83	83	85	75	41	0	0	0	0	0	32	61
# CO2 23 to 27	47	58	57	40	26	0	0	0	0	0	19	46
Pop. Mean	24	24	25	23	23	0	0	0	0	0	24	24
Std. Deviation	2.88	2.97	2.91	2.91	2.92	0	0	0	0	0	2.50	2.38
% CO2 23 to 27	57%	70%	67%	53%	63%	0%	0%	0%	0%	0%	59%	75%



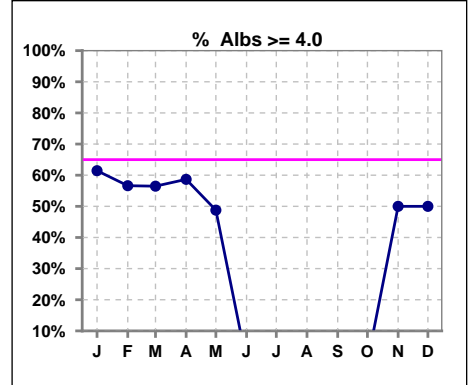
	Jan	Feb	Mar	Apr	May	Jun	Jul	Aug	Sep	Oct	Nov	Dec
# CO2	83	83	85	75	41	0	0	0	0	0	32	61
# CO2 > 27	8	11	11	5	1	0	0	0	0	0	3	2
Pop. Mean	24	24	25	23	23	0	0	0	0	0	24	24
Std. Deviation	2.88	2.97	2.91	2.91	2.92	0	0	0	0	0	2.50	2.38
% CO2 > 27	10%	13%	13%	7%	2%	0%	0%	0%	0%	0%	9%	3%



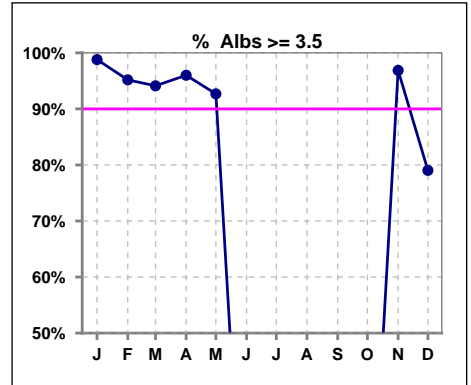
*Albumin values use BCG method - as of July 2001

II. NUTRITION

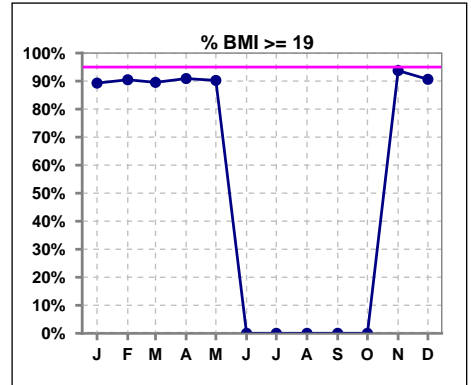
	Jan	Feb	Mar	Apr	May	Jun	Jul	Aug	Sep	Oct	Nov	Dec
# Albumin	83	83	85	75	41	0	0	0	0	0	32	62
# Albumin >= 4.0	51	47	48	44	20	0	0	0	0	0	16	31
Pop. Mean	4.0	4.0	4.0	4.0	4.0	0	0	0	0	0	3.9	3.8
Std. Deviation	0.28	0.29	0.32	0.28	0.38	0	0	0	0	0	0.32	0.45
% Alb >= 4.0	61%	57%	56%	59%	49%	0%	0%	0%	0%	0%	50%	50%



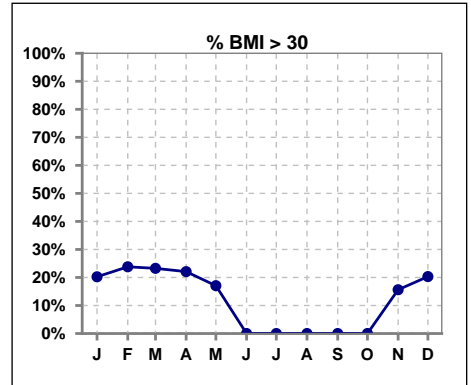
	Jan	Feb	Mar	Apr	May	Jun	Jul	Aug	Sep	Oct	Nov	Dec
# Albumin	83	83	85	75	41	0	0	0	0	0	32	62
# Albumin >= 3.5	82	79	80	72	38	0	0	0	0	0	31	49
Pop. Mean	4.0	4.0	4.0	4.0	4.0	0	0	0	0	0	3.9	3.8
Std. Deviation	0.28	0.29	0.32	0.28	0.38	0	0	0	0	0	0.32	0.45
% Alb >= 3.5	99%	95%	94%	96%	93%	0%	0%	0%	0%	0%	97%	79%



	Jan	Feb	Mar	Apr	May	Jun	Jul	Aug	Sep	Oct	Nov	Dec
# BMI	84	84	86	77	41	0	0	0	0	0	32	64
# BMI >= 19	75	76	77	70	37	0	0	0	0	0	30	58
Pop. Mean	26	26	26	26	25	0	0	0	0	0	25	26
Std. Deviation	6.1	6.6	6.6	6.5	6.1	0	0	0	0	0	5.4	6.2
% BMI >= 19	89%	90%	90%	91%	90%	0%	0%	0%	0%	0%	94%	91%



	Jan	Feb	Mar	Apr	May	Jun	Jul	Aug	Sep	Oct	Nov	Dec
# BMI	84	84	86	77	41	0	0	0	0	0	32	64
# BMI > 30	17	20	20	17	7	0	0	0	0	0	5	13
Pop. Mean	26	26	26	26	25	0	0	0	0	0	25	26
Std. Deviation	6.1	6.6	6.6	6.5	6.1	0	0	0	0	0	5.4	6.2
% BMI > 30	20%	24%	23%	22%	17%	0%	0%	0%	0%	0%	16%	20%

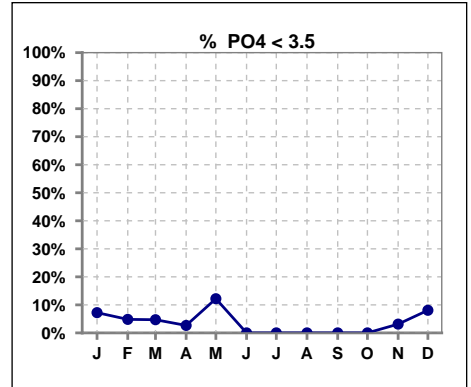


Methodology: a) All labs for 'Adequacy of Dialysis', 'Nutrition', 'Osteodystrophy', 'Anemia' and 'Diabetes' based on last value of month; b) BP's and #L processed are average of all values for month; c) Access data takes last access of month; d) Values for SGA and 'Infection Control' use most recent result.

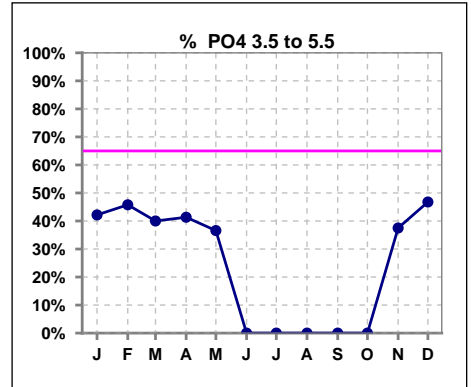
Lab methodology for PTH changed January 2012

III. OSTEODYSTROPHY

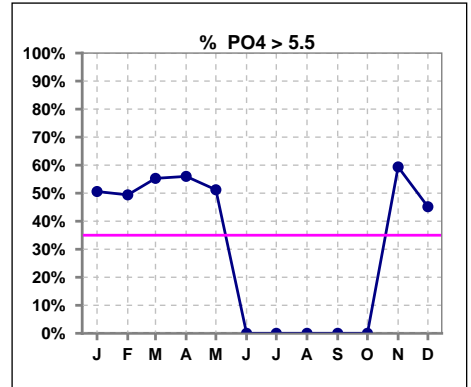
	Jan	Feb	Mar	Apr	May	Jun	Jul	Aug	Sep	Oct	Nov	Dec
# PO4	83	83	85	75	41	0	0	0	0	0	32	62
# PO4 < 3.5	6	4	4	2	5	0	0	0	0	0	1	5
Pop. Mean	5.8	6.0	5.8	5.8	5.8	0	0	0	0	0	5.7	5.7
Std. Deviation	1.86	1.98	1.55	1.59	2.04	0	0	0	0	0	1.35	1.80
% PO4 < 3.5	7%	5%	5%	3%	12%	0%	0%	0%	0%	0%	3%	8%



	Jan	Feb	Mar	Apr	May	Jun	Jul	Aug	Sep	Oct	Nov	Dec
# PO4	83	83	85	75	41	0	0	0	0	0	32	62
# PO4 3.5 to 5.5	35	38	34	31	15	0	0	0	0	0	12	29
Pop. Mean	5.8	6.0	5.8	5.8	5.8	0	0	0	0	0	5.7	5.7
Std. Deviation	1.86	1.98	1.55	1.59	2.04	0	0	0	0	0	1.35	1.80
% PO4 3.5 to 5.5	42%	46%	40%	41%	37%	0%	0%	0%	0%	0%	38%	47%



	Jan	Feb	Mar	Apr	May	Jun	Jul	Aug	Sep	Oct	Nov	Dec
# PO4	83	83	85	75	41	0	0	0	0	0	32	62
# PO4 > 5.5	42	41	47	42	21	0	0	0	0	0	19	28
Pop. Mean	5.8	6.0	5.8	5.8	5.8	0	0	0	0	0	5.7	5.7
Std. Deviation	1.86	1.98	1.55	1.59	2.04	0	0	0	0	0	1.35	1.80
% PO4 > 5.5	51%	49%	55%	56%	51%	0%	0%	0%	0%	0%	59%	45%

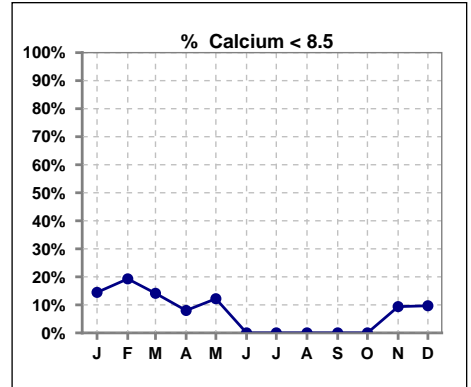


Methodology: a) All labs for 'Adequacy of Dialysis', 'Nutrition', 'Osteodystrophy', 'Anemia' and 'Diabetes' based on last value of month; b) BP's and #L processed are average of all values for month; c) Access data takes last access of month; d) Values for SGA and 'Infection Control' use most recent result.

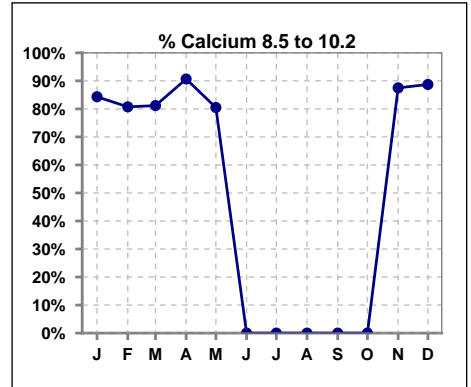
Lab methodology for PTH changed January 2012

III. OSTEODYSTROPHY - CONT.

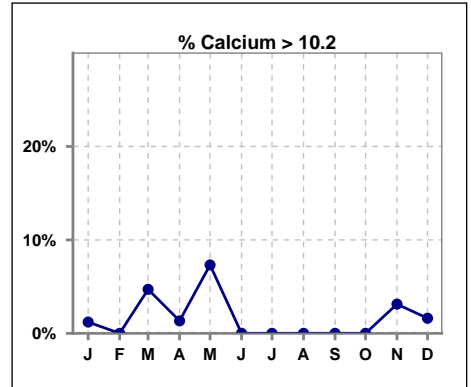
	Jan	Feb	Mar	Apr	May	Jun	Jul	Aug	Sep	Oct	Nov	Dec
# Calcium	83	83	85	75	41	0	0	0	0	0	32	62
# Calcium < 8.5	12	16	12	6	5	0	0	0	0	0	3	6
Pop. Mean	9.1	9.2	9.2	9.2	9.3	0	0	0	0	0	9.2	9.4
Std. Deviation	0.58	0.67	0.74	0.56	0.68	0	0	0	0	0	0.55	0.59
% Calcium < 8.5	14%	19%	14%	8%	12%	0%	0%	0%	0%	0%	9%	10%



	Jan	Feb	Mar	Apr	May	Jun	Jul	Aug	Sep	Oct	Nov	Dec
# Calcium	83	83	85	75	41	0	0	0	0	0	32	62
# Calcium 8.5 to 10.2	70	67	69	68	33	0	0	0	0	0	28	55
Pop. Mean	9.1	9.2	9.2	9.2	9.3	0	0	0	0	0	9.2	9.4
Std. Deviation	0.58	0.67	0.74	0.56	0.68	0	0	0	0	0	0.55	0.59
% Calcium 8.5 to 10.2	84%	81%	81%	91%	80%	0%	0%	0%	0%	0%	88%	89%



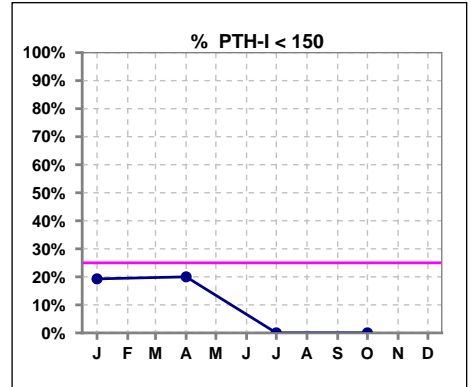
	Jan	Feb	Mar	Apr	May	Jun	Jul	Aug	Sep	Oct	Nov	Dec
# Calcium	83	83	85	75	41	0	0	0	0	0	32	62
# Calcium > 10.2	1	0	4	1	3	0	0	0	0	0	1	1
Pop. Mean	9.1	9.2	9.2	9.2	9.3	0	0	0	0	0	9.2	9.4
Std. Deviation	0.58	0.67	0.74	0.56	0.68	0	0	0	0	0	0.55	0.59
% Calcium > 10.2	1%	0%	5%	1%	7%	0%	0%	0%	0%	0%	3%	2%



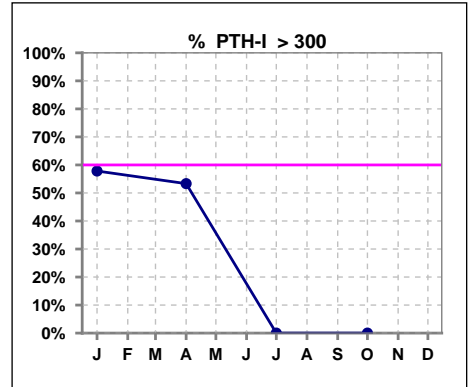
Lab methodology for PTH changed January 2012

III. OSTEODYSTROPHY - CONT.

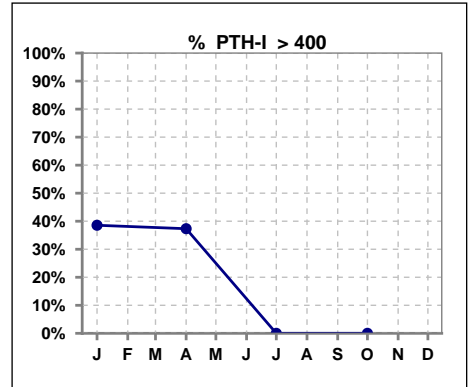
	Jan	Feb	Mar	Apr	May	Jun	Jul	Aug	Sep	Oct	Nov	Dec
# PTH-I	83			75			0			0		
# PTH-I < 150	16			15			0			0		
Pop. Mean	395			402			0			0		
Std. Deviation	292			333			0			0		
% PTH-I < 150	19%			20%			0%			0%		



	Jan	Feb	Mar	Apr	May	Jun	Jul	Aug	Sep	Oct	Nov	Dec
# PTH-I	83			75			0			0		
# PTH-I > 300	48			40			0			0		
Pop. Mean	395			402			0			0		
Std. Deviation	292			333			0			0		
% PTH-I > 300	58%			53%			0%			0%		



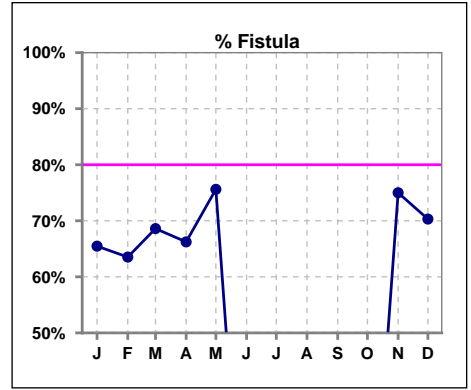
	Jan	Feb	Mar	Apr	May	Jun	Jul	Aug	Sep	Oct	Nov	Dec
# PTH-I	83			75			0			0		
# PTH-I > 400	32			28			0			0		
Pop. Mean	395			402			0			0		
Std. Deviation	292			333			0			0		
% PTH-I > 400	39%			37%			0%			0%		



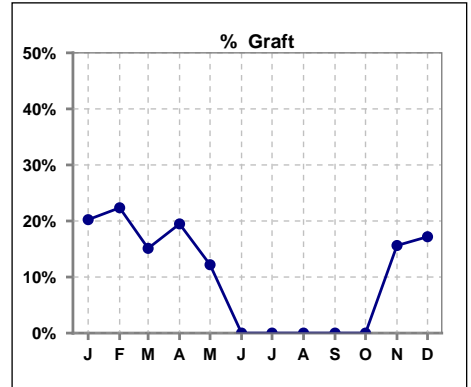
Methodology: a) All labs for 'Adequacy of Dialysis', 'Nutrition', 'Osteodystrophy', 'Anemia' and 'Diabetes' based on last value of month; b) BP's and #L processed are average of all values for month; c) Access data takes last access of month; d) Values for SGA and 'Infection Control' use most recent result.

IV. ACCESS

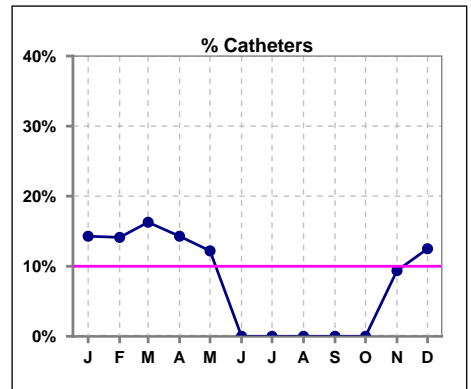
	Jan	Feb	Mar	Apr	May	Jun	Jul	Aug	Sep	Oct	Nov	Dec
# Access	84	85	86	77	41	0	0	0	0	0	32	64
# Fistula	55	54	59	51	31	0	0	0	0	0	24	45
% Fistula	65%	64%	69%	66%	76%	0%	0%	0%	0%	0%	75%	70%



	Jan	Feb	Mar	Apr	May	Jun	Jul	Aug	Sep	Oct	Nov	Dec
# Access	84	85	86	77	41	0	0	0	0	0	32	64
# Graft	17	19	13	15	5	0	0	0	0	0	5	11
% Graft	20%	22%	15%	19%	12%	0%	0%	0%	0%	0%	16%	17%



	Jan	Feb	Mar	Apr	May	Jun	Jul	Aug	Sep	Oct	Nov	Dec
# Access	84	85	86	77	41	0	0	0	0	0	32	64
# Catheters	12	12	14	11	5	0	0	0	0	0	3	8
% Catheters	14%	14%	16%	14%	12%	0%	0%	0%	0%	0%	9%	13%



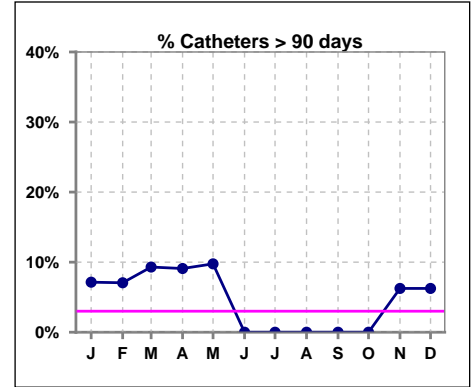
Methodology: a) All labs for 'Adequacy of Dialysis', 'Nutrition', 'Osteodystrophy', 'Anemia' and 'Diabetes' based on last value of month; b) BP's and #L processed are average of all values for month; c) Access data takes last access of month; d) Values for SGA and 'Infection Control' use most recent result.

IV. ACCESS - CONT.

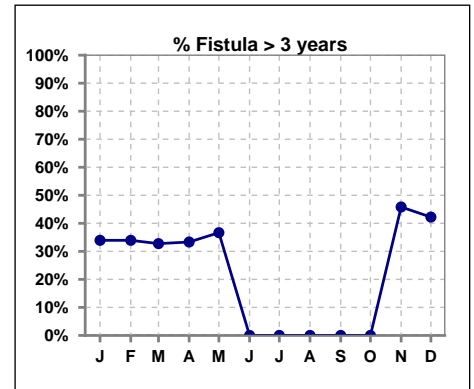
Catheters > 90 days

	Jan	Feb	Mar	Apr	May	Jun	Jul	Aug	Sep	Oct	Nov	Dec
# Access	84	85	86	77	41	0	0	0	0	0	32	64
# Catheters	6	6	8	7	4	0	0	0	0	0	2	4
% Catheters	7%	7%	9%	9%	10%	0%	0%	0%	0%	0%	6%	6%

Definition: Catheter in use on last treatment of the month



	Jan	Feb	Mar	Apr	May	Jun	Jul	Aug	Sep	Oct	Nov	Dec
# Fistula	56	56	58	51	30	0	0	0	0	0	24	45
# Fistula > 3 yrs	19	19	19	17	11	0	0	0	0	0	11	19
% Fistula > 3 yrs	34%	34%	33%	33%	37%	0%	0%	0%	0%	0%	46%	42%



All rates are calculated per 100 patient-month

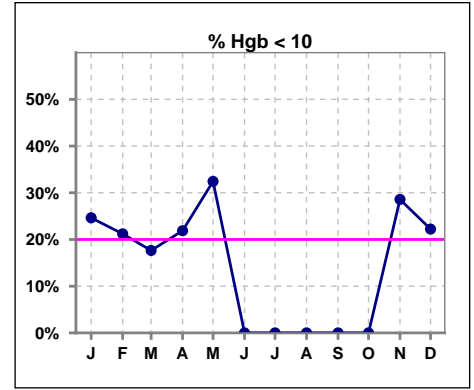
(number of infections/number of accesses x100)

All rates are calculated per 100 patient-month (number of infections/number of accesses x100)																
EBKC	Total Fistula	Fistula Infected	Fistula ARB Rate	National Rate	Total Grafts	Graft Infected	Graft ARB Rate	National Rate	Total Cath	Cath Infected	Cath ARB Rate	National Rate	Total Accesses	Total Access Infected	All ARB Rate Per 100 pt- Months	National Rate
2014-2015 Month																
Dec	55	0	0.00	0.23	21	0	0.00	1.51	14	0	0.00	2.55	90	0	0.00	
Jan	56	0	0.00	0.23	18	0	0.00	1.51	13	0	0.00	2.55	87	0	0.00	
Feb	54	0	0.00	0.23	18	1	5.56	1.51	12	0	0.00	2.55	84	1	1.19	
Mar	57	0	0.00	0.23	16	0	0.00	0.51	9	0	0.00	2.55	82	0	0.00	
April	57	0	0.00	0.23	16	0	0.00	0.51	12	0	0.00	2.55	85	0	0.00	
May	51	0	0.00	0.23	14	0	0.00	0.51	10	0	0.00	2.55	75	0	0.00	
June	0	0	0.00	0.23	0	0	0.00	0.51	0	0	0.00	2.55	0	0	0.00	
July	0	0	0.00	0.23	0	0	0.00	0.51	0	0	0.00	2.55	0	0	0.00	
Aug	0	0	0.00	0.23	0	0	0.00	0.51	0	0	0.00	2.55	0	0	0.00	
Sept	0	0	0.00	0.23	0	0	0.00	0.51	0	0	0.00	2.55	0	0	0.00	
Oct	0	0	0.00	0.23	0	0	0.00	1.51	0	0	0.00	2.55	0	0	0.00	
Nov	0	0	0.00	0.23	0	0	0.00	1.51	0	0	0.00	2.55	0	0	0.00	
Annual Total:	330	0	0.00	0.23	103	1	0.97	0.51	70	0	0.00	2.55	503	1	0.20	0.88

V. ANEMIA

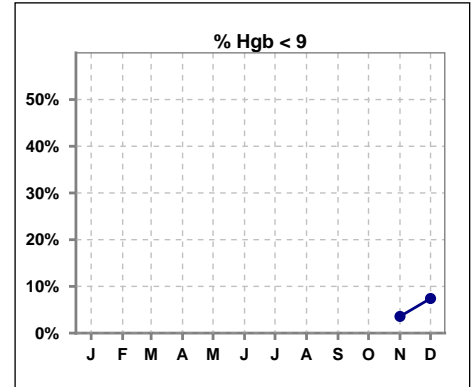
	Jan	Feb	Mar	Apr	May	Jun	Jul	Aug	Sep	Oct	Nov	Dec
# Hgb	69	66	68	64	37	0	0	0	0	0	28	54
# Hgb < 10	17	14	12	14	12	0	0	0	0	0	8	12
Pop. Mean	10.6	10.7	10.6	10.6	10.3	0	0	0	0	0	10.4	10.6
Std. Deviation	1.1	1.0	1.1	1.1	1.1	0	0	0	0	0	1.1	1.0
% Hgb < 10	25%	21%	18%	22%	32%	0%	0%	0%	0%	0%	29%	22%

Note: Excludes patients who received no ESA in month.



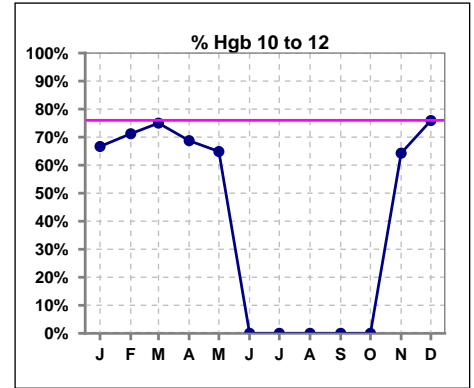
	Jan	Feb	Mar	Apr	May	Jun	Jul	Aug	Sep	Oct	Nov	Dec
# Hgb											28	54
# Hgb < 9											1	4
Pop. Mean											10.4	10.6
Std. Deviation											1.1	1.0
% Hgb < 9											4%	7%

Note: Excludes patients who received no ESA in month.



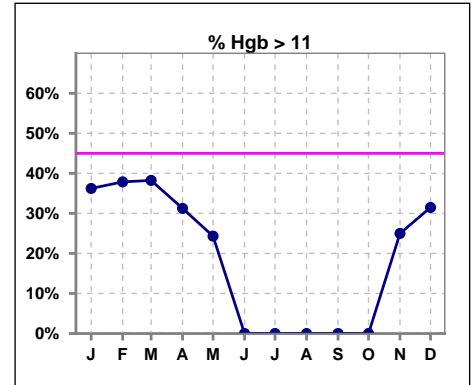
	Jan	Feb	Mar	Apr	May	Jun	Jul	Aug	Sep	Oct	Nov	Dec
# Hgb	69	66	68	64	37	0	0	0	0	0	28	54
# Hgb 10 to 12	46	47	51	44	24	0	0	0	0	0	18	41
Pop. Mean	10.6	10.7	10.6	10.6	10.3	0	0	0	0	0	10.4	10.6
Std. Deviation	1.1	1.0	1.1	1.1	1.1	0	0	0	0	0	1.1	1.0
% Hgb 10 to 12	67%	71%	75%	69%	65%	0%	0%	0%	0%	0%	64%	76%

Note: Excludes patients who received no ESA in month.



	Jan	Feb	Mar	Apr	May	Jun	Jul	Aug	Sep	Oct	Nov	Dec
# Hgb	69	66	68	64	37	0	0	0	0	0	28	54
# Hgb > 11	25	25	26	20	9	0	0	0	0	0	7	17
Pop. Mean	10.6	10.7	10.6	10.6	10.3	0	0	0	0	0	10.4	10.6
Std. Deviation	1.1	1.0	1.1	1.1	1.1	0	0	0	0	0	1.1	1.0
% Hgb > 11	36%	38%	38%	31%	24%	0%	0%	0%	0%	0%	25%	31%

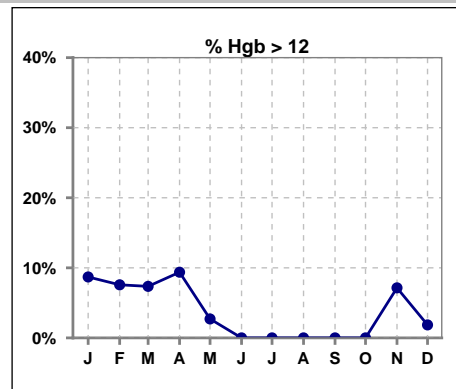
Note: Excludes patients who received no ESA in month.



V. ANEMIA - CONT.

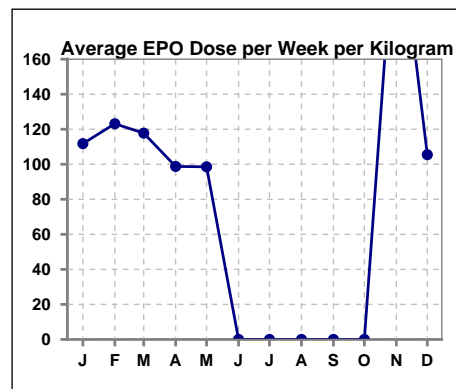
	Jan	Feb	Mar	Apr	May	Jun	Jul	Aug	Sep	Oct	Nov	Dec
# Hgb	69	66	68	64	37	0	0	0	0	0	28	54
# Hgb > 12	6	5	5	6	1	0	0	0	0	0	2	1
Pop. Mean	10.6	10.7	10.6	10.6	10.3	0	0	0	0	0	10.4	10.6
Std. Deviation	1.1	1.0	1.1	1.1	1.1	0	0	0	0	0	1.1	1.0
% Hgb > 12	9%	8%	7%	9%	3%	0%	0%	0%	0%	0%	7%	2%

Note: Excludes patients who received no ESA in month.



Average EPO Dose per Week per Kilogram

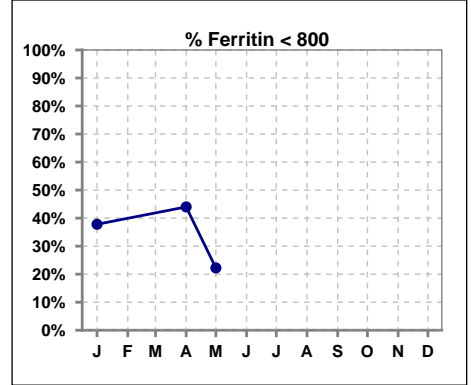
	Jan	Feb	Mar	Apr	May	Jun	Jul	Aug	Sep	Oct	Nov	Dec
# Average EPO	111.8	123.1	117.8	98.8	98.6	0	0	0	0	0	251.4	105.5



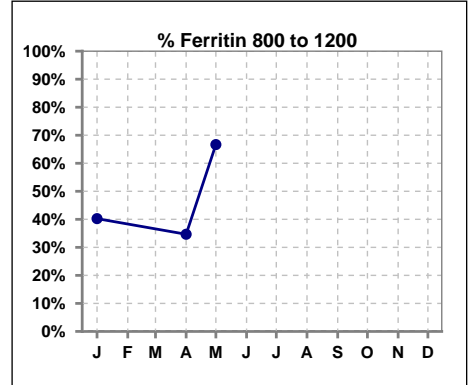
V. ANEMIA - CONT.

Iron Profile

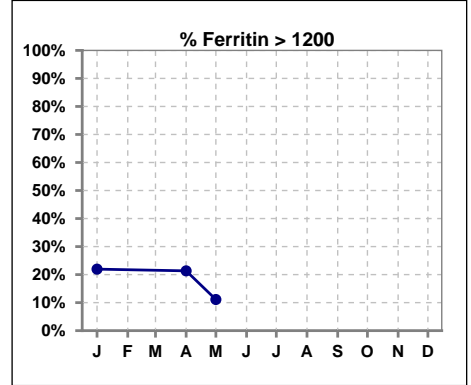
	Jan	Feb	Mar	Apr	May	Jun	Jul	Aug	Sep	Oct	Nov	Dec
# Ferritin	82			75	9							
# Ferritin < 800	31			33	2							
Pop. Mean	920			850	1092							
Std. Deviation	531			423	586							
% Ferritin < 800	38%			44%	22%							



	Jan	Feb	Mar	Apr	May	Jun	Jul	Aug	Sep	Oct	Nov	Dec
# Ferritin	82			75	9							
# Ferritin 800 to 1200	33			26	6							
Pop. Mean	920			850	1092							
Std. Deviation	531			423	586							
% Ferritin 800 to 1200	40%			35%	67%							

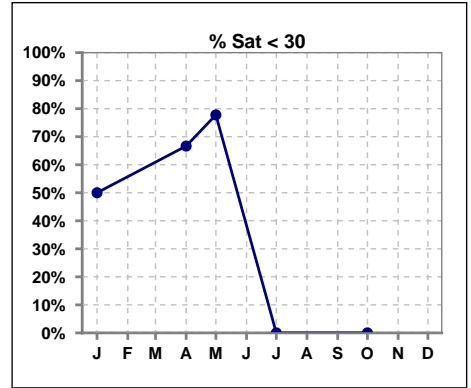


	Jan	Feb	Mar	Apr	May	Jun	Jul	Aug	Sep	Oct	Nov	Dec
# Ferritin	82			75	9							
# Ferritin > 1200	18			16	1							
Pop. Mean	920			850	1092							
Std. Deviation	531			423	586							
% Ferritin > 1200	22%			21%	11%							

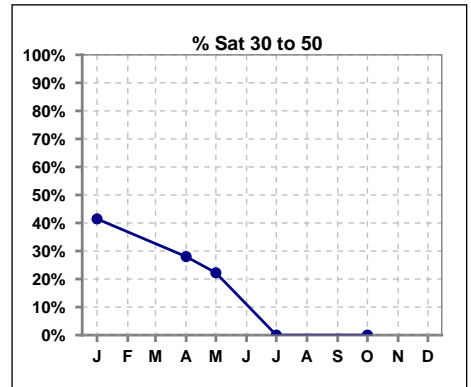


V. ANEMIA - CONT.

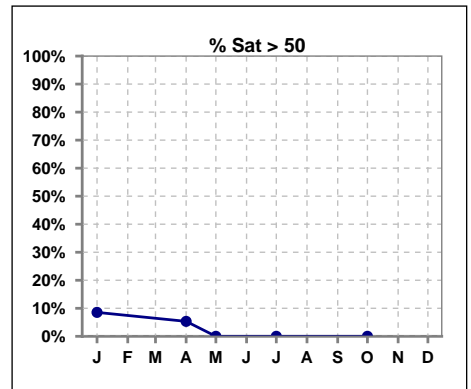
	Jan	Feb	Mar	Apr	May	Jun	Jul	Aug	Sep	Oct	Nov	Dec
# % Sat	82			75	9		0			0		
# % Sat < 30	41			50	7		0			0		
Pop. Mean	30			28	27		0			0		
Std. Deviation	16			13	9		0			0		
%% Sat < 30	50%			67%	78%		0%			0%		



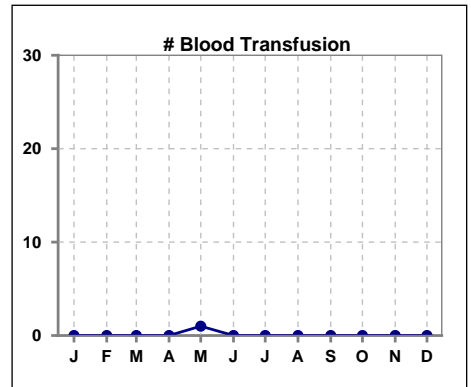
	Jan	Feb	Mar	Apr	May	Jun	Jul	Aug	Sep	Oct	Nov	Dec
# % Sat	82			75	9		0			0		
# % Sat 30 to 50	34			21	2		0			0		
Pop. Mean	30			28	27		0			0		
Std. Deviation	16			13	9		0			0		
%% Sat 30 to 50	41%			28%	22%		0%			0%		



	Jan	Feb	Mar	Apr	May	Jun	Jul	Aug	Sep	Oct	Nov	Dec
# % Sat	82			75	9		0			0		
# % Sat > 50	7			4	0		0			0		
Pop. Mean	30			28	27		0			0		
Std. Deviation	16			13	9		0			0		
%% Sat > 50	9%			5%	0%		0%			0%		

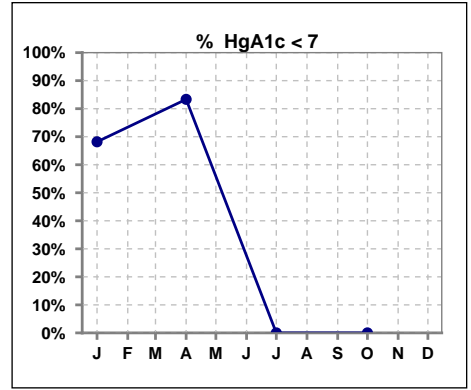


	Jan	Feb	Mar	Apr	May	Jun	Jul	Aug	Sep	Oct	Nov	Dec
# Patient	84	85	87	79	43	0	0	0	0	0	32	64
# Blood Transfusion	0	0	0	0	1	0	0	0	0	0	0	0



VI. Diabetes

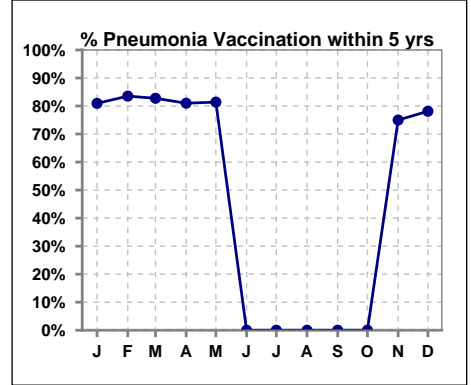
	Jan	Feb	Mar	Apr	May	Jun	Jul	Aug	Sep	Oct	Nov	Dec
# HgA1c	22			30			0			0		
# HgA1c < 7	15			25			0			0		
Pop. Mean	6.7			6.1			0			0		
Std. Deviation	1.36			1.30			0			0		
% HgA1c < 7	68%			83%			0%			0%		



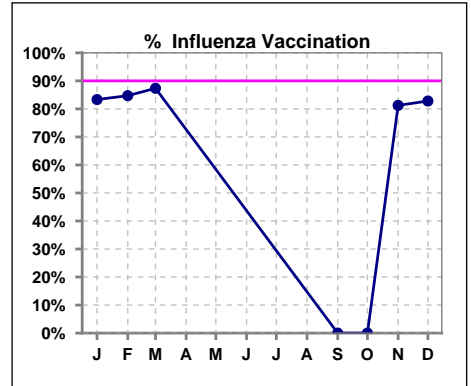
VII. Infection Control

Pneumonia vaccination within the past five years

	Jan	Feb	Mar	Apr	May	Jun	Jul	Aug	Sep	Oct	Nov	Dec
# Patient	84	85	87	79	43	0	0	0	0	0	32	64
# Pneumonia	68	71	72	64	35	0	0	0	0	0	24	50
% Pneumonia	81%	84%	83%	81%	81%	0%	0%	0%	0%	0%	75%	78%



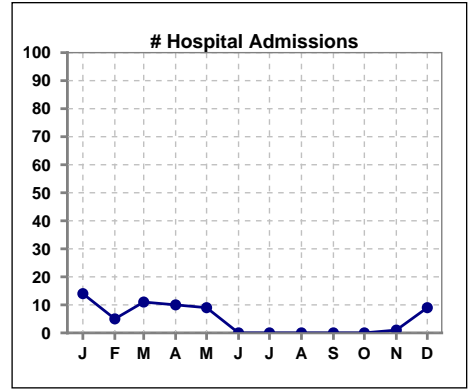
	Jan	Feb	Mar	Apr	May	Jun	Jul	Aug	Sep	Oct	Nov	Dec
# Patient	84	85	87						0	0	32	64
# Influenza	70	72	76						0	0	26	53
% Influenza	83%	85%	87%						0%	0%	81%	83%



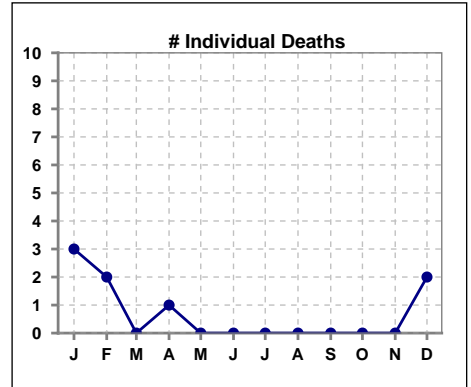
Methodology: a) All labs for 'Adequacy of Dialysis', 'Nutrition', 'Osteodystrophy', 'Anemia' and 'Diabetes' based on last value of month; b) BP's and #L processed are average of all values for month; c) Access data takes last access of month; d) Values for SGA and 'Infection Control' use most recent result.

VIII. Outcome measures

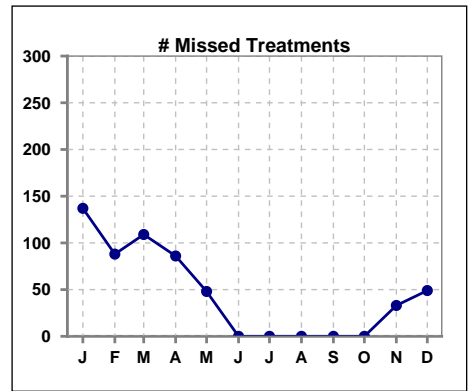
	Jan	Feb	Mar	Apr	May	Jun	Jul	Aug	Sep	Oct	Nov	Dec
# Patient	84	85	87	79	43	0	0	0	0	0	32	64
# Hospital Admissions	14	5	11	10	9	0	0	0	0	0	1	9



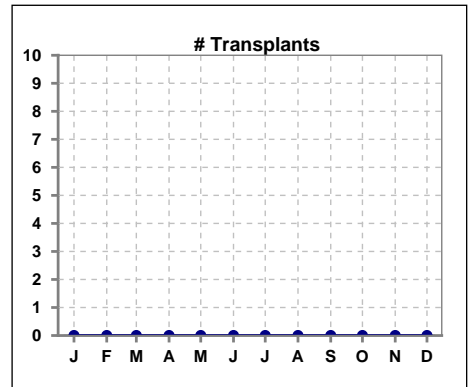
	Jan	Feb	Mar	Apr	May	Jun	Jul	Aug	Sep	Oct	Nov	Dec
# Patient	84	85	87	79	43	0	0	0	0	0	32	64
# Individual Deaths	3	2	0	1	0	0	0	0	0	0	0	2



	Jan	Feb	Mar	Apr	May	Jun	Jul	Aug	Sep	Oct	Nov	Dec
# Patient	84	85	87	79	43	0	0	0	0	0	32	64
# Missed Treatments	137	88	109	86	48	0	0	0	0	0	33	49



	Jan	Feb	Mar	Apr	May	Jun	Jul	Aug	Sep	Oct	Nov	Dec
# Patient	84	85	87	79	43	0	0	0	0	0	32	64
# Transplants	0	0	0	0	0	0	0	0	0	0	0	0



Methodology: a) All labs for 'Adequacy of Dialysis', 'Nutrition', 'Osteodystrophy', 'Anemia' and 'Diabetes' based on last value of month; b) BP's and #L processed are average of all values for month; c) Access data takes last access of month; d) Values for SGA and 'Infection Control' use most recent result.