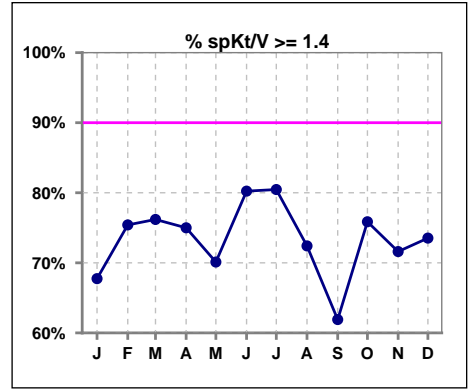
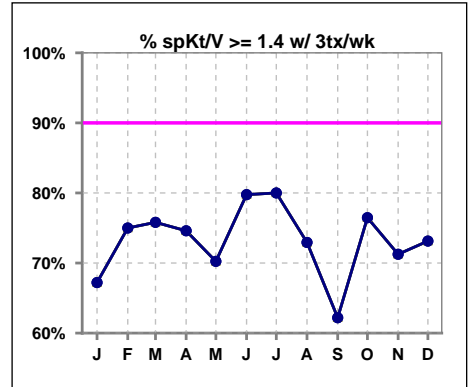


I. ADEQUACY OF DIALYSIS

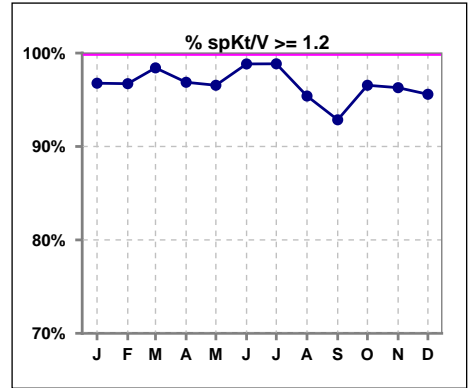
	Jan	Feb	Mar	Apr	May	Jun	Jul	Aug	Sep	Oct	Nov	Dec
# spKt/V	62	61	63	64	87	86	87	87	84	87	81	68
# spKt/V >= 1.4	42	46	48	48	61	69	70	63	52	66	58	50
Pop. Mean	1.57	1.57	1.59	1.56	1.54	1.59	1.59	1.54	1.49	1.59	1.57	1.59
Std. Deviation	0.30	0.28	0.28	0.26	0.29	0.29	0.26	0.31	0.29	0.29	0.29	0.34
% spKt/V >= 1.4	68%	75%	76%	75%	70%	80%	80%	72%	62%	76%	72%	74%



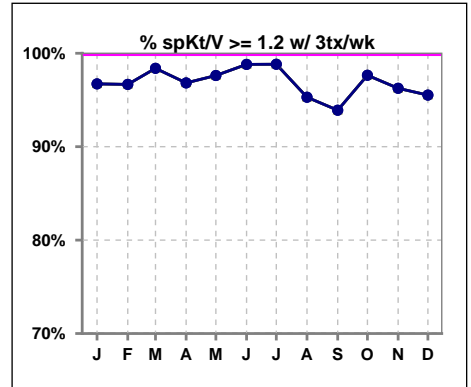
	Jan	Feb	Mar	Apr	May	Jun	Jul	Aug	Sep	Oct	Nov	Dec
# spKt/V w/ 3tx/wk	61	60	62	63	84	84	85	85	82	85	80	67
# spKt/V >= 1.4 w/3tx/wk	41	45	47	47	59	67	68	62	51	65	57	49
Pop. Mean	1.56	1.56	1.58	1.55	1.55	1.59	1.58	1.54	1.49	1.59	1.56	1.58
Std. Deviation	0.28	0.26	0.28	0.26	0.28	0.29	0.25	0.30	0.28	0.28	0.28	0.34
% >= 1.4 w/3tx/wk	67%	75%	76%	75%	70%	80%	80%	73%	62%	76%	71%	73%



	Jan	Feb	Mar	Apr	May	Jun	Jul	Aug	Sep	Oct	Nov	Dec
# spKt/V	62	61	63	64	87	86	87	87	84	87	81	68
# spKt/V >= 1.2	60	59	62	62	84	85	86	83	78	84	78	65
Pop. Mean	1.57	1.57	1.59	1.56	1.54	1.59	1.59	1.54	1.49	1.59	1.57	1.59
Std. Deviation	0.30	0.28	0.28	0.26	0.29	0.29	0.26	0.31	0.29	0.29	0.29	0.34
% spKt/V >= 1.2	97%	97%	98%	97%	97%	99%	99%	95%	93%	97%	96%	96%



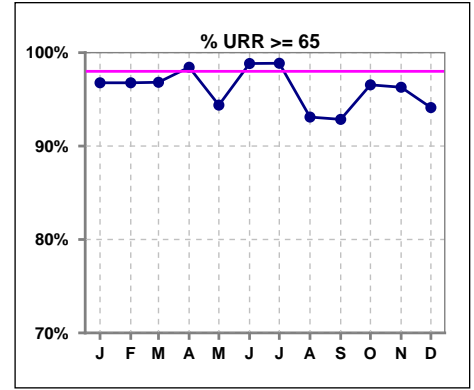
	Jan	Feb	Mar	Apr	May	Jun	Jul	Aug	Sep	Oct	Nov	Dec
# spKt/V w/ 3tx/wk	61	60	62	63	84	84	85	85	82	85	80	67
# spKt/V >= 1.2 w/3tx/wk	59	58	61	61	82	83	84	81	77	83	77	64
Pop. Mean	1.56	1.56	1.58	1.55	1.55	1.59	1.58	1.54	1.49	1.59	1.56	1.58
Std. Deviation	0.28	0.26	0.28	0.26	0.28	0.29	0.25	0.30	0.28	0.28	0.28	0.34
% >= 1.2 w/3tx/wk	97%	97%	98%	97%	98%	99%	99%	95%	94%	98%	96%	96%



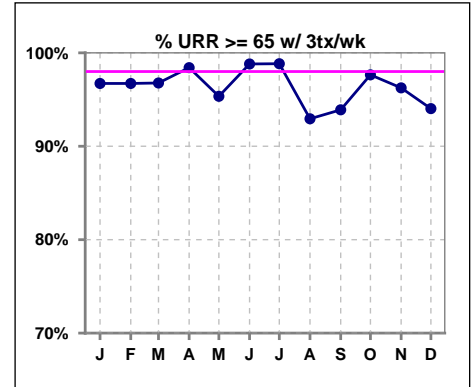
Methodology: a) All labs for 'Adequacy of Dialysis', 'Nutrition', 'Osteodystrophy', 'Anemia' and 'Diabetes' based on last value of month; b) BP's and #L processed are average of all values for month; c) Access data takes last access of month; d) Values for SGA and 'Infection Control' use most recent result.

I. ADEQUACY OF DIALYSIS - CONT.

	Jan	Feb	Mar	Apr	May	Jun	Jul	Aug	Sep	Oct	Nov	Dec
# URR	62	62	63	64	89	86	88	87	84	87	81	68
# URR >= 65	60	60	61	63	84	85	87	81	78	84	78	64
Pop. Mean	74	74	74	73	73	74	75	73	72	74	74	74
Std. Deviation	5.72	5.71	5.64	5.47	8.33	5.92	5.23	6.75	7.27	5.77	5.84	7.02
% URR >= 65	97%	97%	97%	98%	94%	99%	99%	93%	93%	97%	96%	94%



	Jan	Feb	Mar	Apr	May	Jun	Jul	Aug	Sep	Oct	Nov	Dec
# URR w/ 3tx/wk	61	61	62	63	86	84	86	85	82	85	80	67
# URR>=65 w/ 3tx/wk	59	59	60	62	82	83	85	79	77	83	77	63
Pop. Mean	74	74	74	73	73	74	74	73	72	74	74	74
Std. Deviation	5.58	5.59	5.68	5.41	8.12	5.98	5.21	6.70	7.12	5.58	5.73	6.95
% URR>=65 w/ 3tx/wk	97%	97%	97%	98%	95%	99%	99%	93%	94%	98%	96%	94%

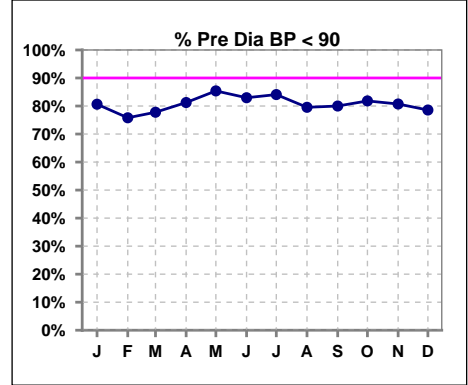


Methodology: a) All labs for 'Adequacy of Dialysis', 'Nutrition', 'Osteodystrophy', 'Anemia' and 'Diabetes' based on last value of month; b) BP's and #L processed are average of all values for month; c) Access data takes last access of month; d) Values for SGA and 'Infection Control' use most recent result.

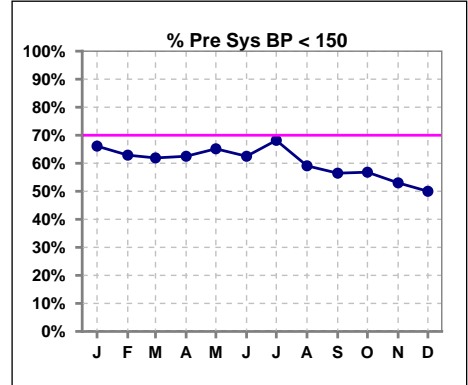
I. ADEQUACY OF DIALYSIS - CONT.

Blood Pressure Control (Pre)

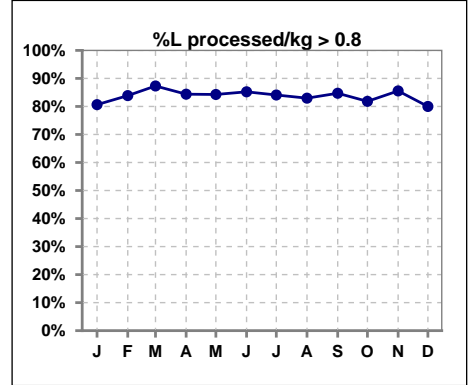
	Jan	Feb	Mar	Apr	May	Jun	Jul	Aug	Sep	Oct	Nov	Dec
# Pre Dia BP	62	62	63	64	89	88	88	88	85	88	83	70
# Pre Dia BP < 90	50	47	49	52	76	73	74	70	68	72	67	55
Pop. Mean	78	79	78	78	78	77	76	78	78	78	78	79
Std. Deviation	14.2	13.7	12.9	13.1	12.6	13.5	13.3	13.3	12.6	12.5	11.9	11.6
% Pre Dia BP < 90	81%	76%	78%	81%	85%	83%	84%	80%	80%	82%	81%	79%



	Jan	Feb	Mar	Apr	May	Jun	Jul	Aug	Sep	Oct	Nov	Dec
# Pre Sys BP	62	62	63	64	89	88	88	88	85	88	83	70
# Pre Sys BP < 150	41	39	39	40	58	55	60	52	48	50	44	35
Pop. Mean	144	146	145	144	144	144	142	145	147	148	149	150
Std. Deviation	21.6	20.9	19.3	19.0	18.8	19.8	20.4	19.8	19.1	19.7	17.4	17.5
%Pre Sys BP <150	66%	63%	62%	63%	65%	63%	68%	59%	56%	57%	53%	50%



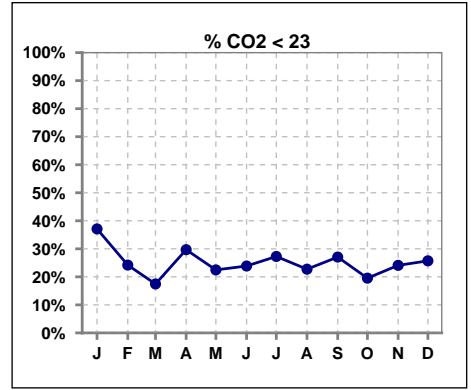
	Jan	Feb	Mar	Apr	May	Jun	Jul	Aug	Sep	Oct	Nov	Dec
# L processed/kg	62	62	63	64	89	88	88	88	85	88	83	70
# L processed/kg>0.8	50	52	55	54	75	75	74	73	72	72	71	56
Pop. Mean	1	1	1	1	1	1	1	1	1	1	1	1
Std. Deviation	0.3	0.3	0.3	0.3	0.3	0.3	0.3	0.3	0.3	0.3	0.3	0.3
% L processed/kg>0.8	81%	84%	87%	84%	84%	85%	84%	83%	85%	82%	86%	80%



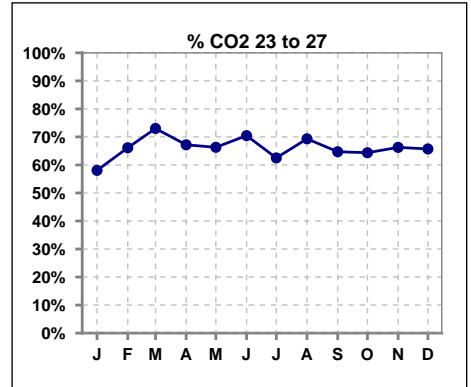
Methodology: a) All labs for 'Adequacy of Dialysis', 'Nutrition', 'Osteodystrophy', 'Anemia' and 'Diabetes' based on last value of month; b) BP's and #L processed are average of all values for month; c) Access data takes last access of month; d) Values for SGA and 'Infection Control' use most recent result.

I. ADEQUACY OF DIALYSIS - CONT.

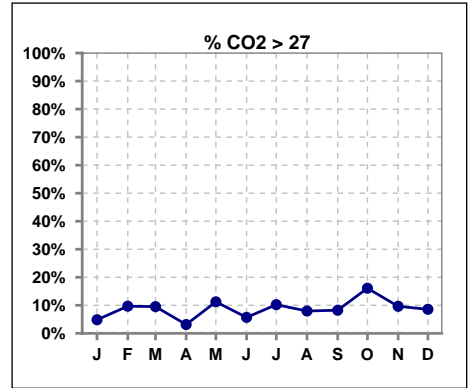
	Jan	Feb	Mar	Apr	May	Jun	Jul	Aug	Sep	Oct	Nov	Dec
# CO2	62	62	63	64	89	88	88	88	85	87	83	70
# CO2 < 23	23	15	11	19	20	21	24	20	23	17	20	18
Pop. Mean	23	24	25	23	24	24	24	24	24	25	24	24
Std. Deviation	2.67	3.05	3.06	2.58	2.81	2.72	2.89	2.93	3.25	2.66	3.31	3.07
% CO2 < 23	37%	24%	17%	30%	22%	24%	27%	23%	27%	20%	24%	26%



	Jan	Feb	Mar	Apr	May	Jun	Jul	Aug	Sep	Oct	Nov	Dec
# CO2	62	62	63	64	89	88	88	88	85	87	83	70
# CO2 23 to 27	36	41	46	43	59	62	55	61	55	56	55	46
Pop. Mean	23	24	25	23	24	24	24	24	24	25	24	24
Std. Deviation	2.67	3.05	3.06	2.58	2.81	2.72	2.89	2.93	3.25	2.66	3.31	3.07
% CO2 23 to 27	58%	66%	73%	67%	66%	70%	63%	69%	65%	64%	66%	66%



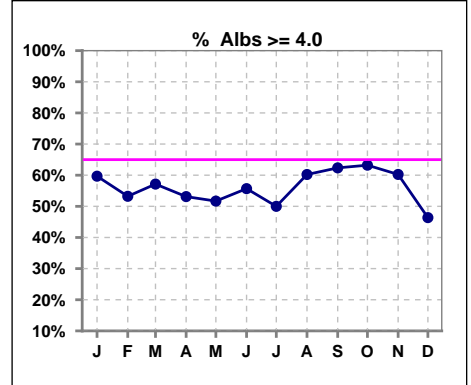
	Jan	Feb	Mar	Apr	May	Jun	Jul	Aug	Sep	Oct	Nov	Dec
# CO2	62	62	63	64	89	88	88	88	85	87	83	70
# CO2 > 27	3	6	6	2	10	5	9	7	7	14	8	6
Pop. Mean	23	24	25	23	24	24	24	24	24	25	24	24
Std. Deviation	2.67	3.05	3.06	2.58	2.81	2.72	2.89	2.93	3.25	2.66	3.31	3.07
% CO2 > 27	5%	10%	10%	3%	11%	6%	10%	8%	8%	16%	10%	9%



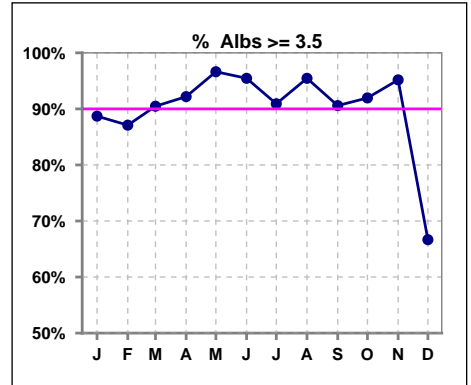
*Albumin values use BCG method - as of July 2001

II. NUTRITION

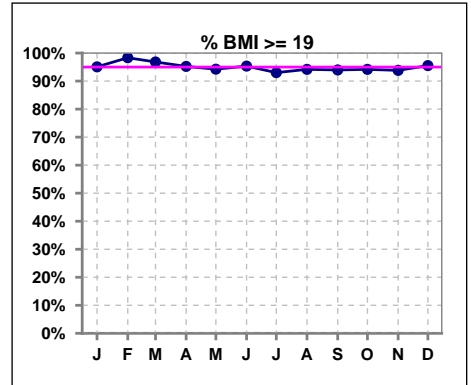
	Jan	Feb	Mar	Apr	May	Jun	Jul	Aug	Sep	Oct	Nov	Dec
# Albumin	62	62	63	64	89	88	88	88	85	87	83	69
# Albumin >= 4.0	37	33	36	34	46	49	44	53	53	55	50	32
Pop. Mean	4.0	3.9	4.0	3.9	4.0	4.0	3.9	4.0	4.0	4.0	4.0	3.7
Std. Deviation	0.40	0.37	0.36	0.35	0.32	0.30	0.38	0.33	0.37	0.37	0.32	0.47
% Alb >= 4.0	60%	53%	57%	53%	52%	56%	50%	60%	62%	63%	60%	46%



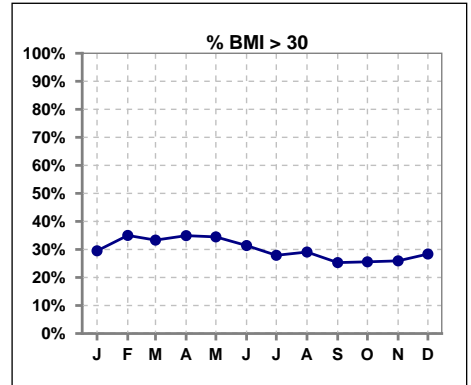
	Jan	Feb	Mar	Apr	May	Jun	Jul	Aug	Sep	Oct	Nov	Dec
# Albumin	62	62	63	64	89	88	88	88	85	87	83	69
# Albumin >= 3.5	55	54	57	59	86	84	80	84	77	80	79	46
Pop. Mean	4.0	3.9	4.0	3.9	4.0	4.0	3.9	4.0	4.0	4.0	4.0	3.7
Std. Deviation	0.40	0.37	0.36	0.35	0.32	0.30	0.38	0.33	0.37	0.37	0.32	0.47
% Alb >= 3.5	89%	87%	90%	92%	97%	95%	91%	95%	91%	92%	95%	67%



	Jan	Feb	Mar	Apr	May	Jun	Jul	Aug	Sep	Oct	Nov	Dec
# BMI	61	60	62	63	87	86	86	86	83	86	81	67
# BMI >= 19	58	59	61	60	82	82	80	81	78	81	76	64
Pop. Mean	27	28	28	28	28	27	27	27	27	26	27	26
Std. Deviation	6.5	6.4	6.4	6.6	6.9	6.2	5.7	6.0	5.6	5.4	5.5	5.5
% BMI >= 19	95%	98%	97%	95%	94%	95%	93%	94%	94%	94%	94%	96%



	Jan	Feb	Mar	Apr	May	Jun	Jul	Aug	Sep	Oct	Nov	Dec
# BMI	61	60	62	63	87	86	86	86	83	86	81	67
# BMI > 30	18	21	21	22	30	27	24	25	21	22	21	19
Pop. Mean	27	28	28	28	28	27	27	27	27	26	27	26
Std. Deviation	6.5	6.4	6.4	6.6	6.9	6.2	5.7	6.0	5.6	5.4	5.5	5.5
% BMI > 30	30%	35%	33%	35%	34%	31%	28%	29%	25%	26%	26%	28%

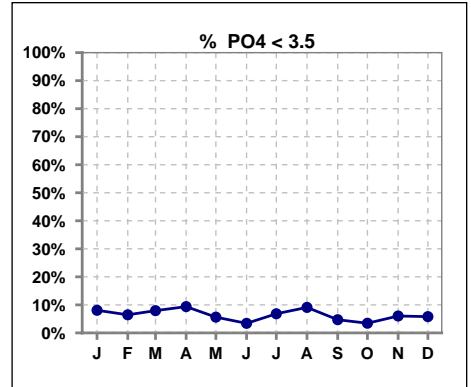


Methodology: a) All labs for 'Adequacy of Dialysis', 'Nutrition', 'Osteodystrophy', 'Anemia' and 'Diabetes' based on last value of month; b) BP's and #L processed are average of all values for month; c) Access data takes last access of month; d) Values for SGA and 'Infection Control' use most recent result.

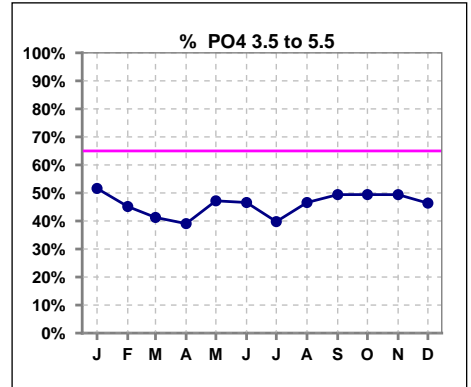
Lab methodology for PTH changed January 2012

III. OSTEODYSTROPHY

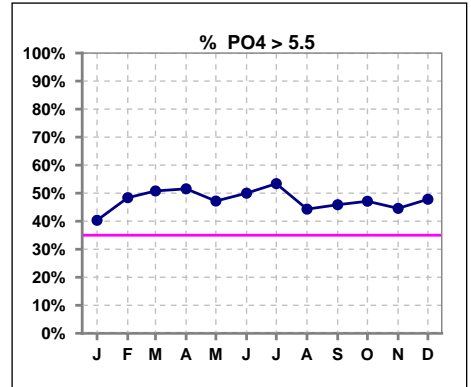
	Jan	Feb	Mar	Apr	May	Jun	Jul	Aug	Sep	Oct	Nov	Dec
# PO4	62	62	63	64	89	88	88	88	85	87	83	69
# PO4 < 3.5	5	4	5	6	5	3	6	8	4	3	5	4
Pop. Mean	5.7	6.0	5.9	5.8	5.9	5.8	5.8	5.7	5.8	5.7	5.7	5.7
Std. Deviation	2.21	2.28	2.30	2.05	2.06	1.63	1.89	1.85	1.84	1.76	1.84	1.65
% PO4 < 3.5	8%	6%	8%	9%	6%	3%	7%	9%	5%	3%	6%	6%



	Jan	Feb	Mar	Apr	May	Jun	Jul	Aug	Sep	Oct	Nov	Dec
# PO4	62	62	63	64	89	88	88	88	85	87	83	69
# PO4 3.5 to 5.5	32	28	26	25	42	41	35	41	42	43	41	32
Pop. Mean	5.7	6.0	5.9	5.8	5.9	5.8	5.8	5.7	5.8	5.7	5.7	5.7
Std. Deviation	2.21	2.28	2.30	2.05	2.06	1.63	1.89	1.85	1.84	1.76	1.84	1.65
% PO4 3.5 to 5.5	52%	45%	41%	39%	47%	47%	40%	47%	49%	49%	49%	46%



	Jan	Feb	Mar	Apr	May	Jun	Jul	Aug	Sep	Oct	Nov	Dec
# PO4	62	62	63	64	89	88	88	88	85	87	83	69
# PO4 > 5.5	25	30	32	33	42	44	47	39	39	41	37	33
Pop. Mean	5.7	6.0	5.9	5.8	5.9	5.8	5.8	5.7	5.8	5.7	5.7	5.7
Std. Deviation	2.21	2.28	2.30	2.05	2.06	1.63	1.89	1.85	1.84	1.76	1.84	1.65
% PO4 > 5.5	40%	48%	51%	52%	47%	50%	53%	44%	46%	47%	45%	48%

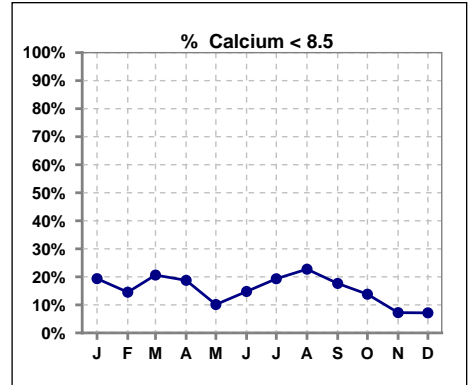


Methodology: a) All labs for 'Adequacy of Dialysis', 'Nutrition', 'Osteodystrophy', 'Anemia' and 'Diabetes' based on last value of month; b) BP's and #L processed are average of all values for month; c) Access data takes last access of month; d) Values for SGA and 'Infection Control' use most recent result.

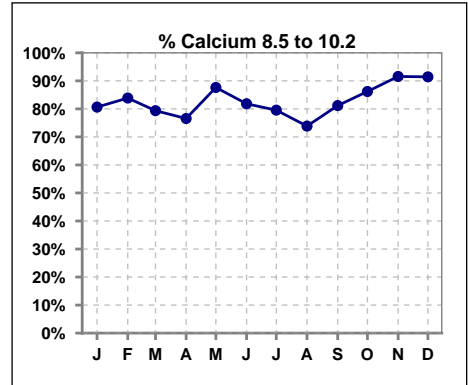
Lab methodology for PTH changed January 2012

III. OSTEODYSTROPHY - CONT.

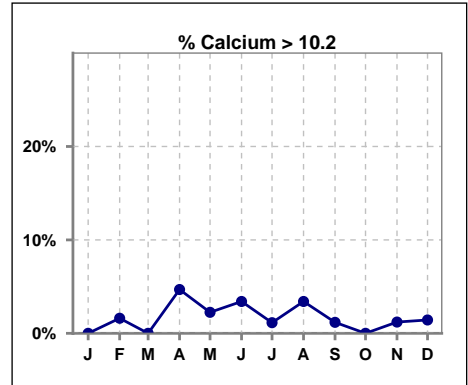
	Jan	Feb	Mar	Apr	May	Jun	Jul	Aug	Sep	Oct	Nov	Dec
# Calcium	62	62	63	64	89	88	88	88	85	87	83	70
# Calcium < 8.5	12	9	13	12	9	13	17	20	15	12	6	5
Pop. Mean	9.0	9.1	9.1	9.0	9.3	9.2	9.0	9.0	9.0	9.2	9.3	9.2
Std. Deviation	0.66	0.65	0.72	0.77	0.61	0.72	0.72	0.63	0.64	0.67	0.64	0.66
% Calcium < 8.5	19%	15%	21%	19%	10%	15%	19%	23%	18%	14%	7%	7%



	Jan	Feb	Mar	Apr	May	Jun	Jul	Aug	Sep	Oct	Nov	Dec
# Calcium	62	62	63	64	89	88	88	88	85	87	83	70
# Calcium 8.5 to 10.2	50	52	50	49	78	72	70	65	69	75	76	64
Pop. Mean	9.0	9.1	9.1	9.0	9.3	9.2	9.0	9.0	9.0	9.2	9.3	9.2
Std. Deviation	0.66	0.65	0.72	0.77	0.61	0.72	0.72	0.63	0.64	0.67	0.64	0.66
% Calcium 8.5 to 10.2	81%	84%	79%	77%	88%	82%	80%	74%	81%	86%	92%	91%



	Jan	Feb	Mar	Apr	May	Jun	Jul	Aug	Sep	Oct	Nov	Dec
# Calcium	62	62	63	64	89	88	88	88	85	87	83	70
# Calcium > 10.2	0	1	0	3	2	3	1	3	1	0	1	1
Pop. Mean	9.0	9.1	9.1	9.0	9.3	9.2	9.0	9.0	9.0	9.2	9.3	9.2
Std. Deviation	0.66	0.65	0.72	0.77	0.61	0.72	0.72	0.63	0.64	0.67	0.64	0.66
% Calcium > 10.2	0%	2%	0%	5%	2%	3%	1%	3%	1%	0%	1%	1%

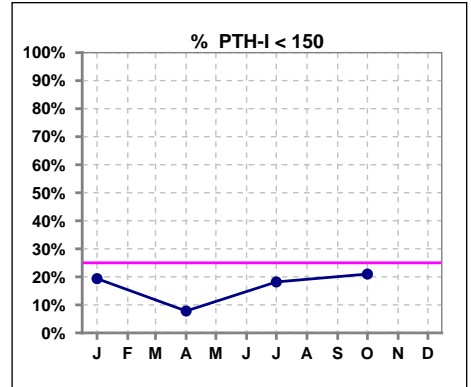


Methodology: a) All labs for 'Adequacy of Dialysis', 'Nutrition', 'Osteodystrophy', 'Anemia' and 'Diabetes' based on last value of month; b) BP's and #L processed are average of all values for month; c) Access data takes last access of month; d) Values for SGA and 'Infection Control' use most recent result.

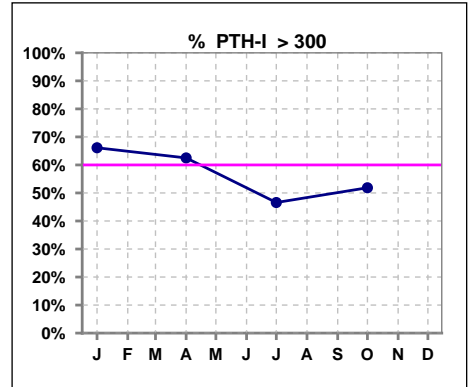
Lab methodology for PTH changed January 2012

III. OSTEODYSTROPHY - CONT.

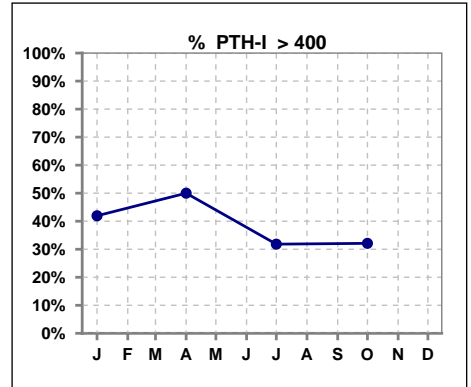
	Jan	Feb	Mar	Apr	May	Jun	Jul	Aug	Sep	Oct	Nov	Dec
# PTH-I	62			64			88			81		
# PTH-I < 150	12			5			16			17		
Pop. Mean	391			419			368			373		
Std. Deviation	237			236			308			314		
% PTH-I < 150	19%			8%			18%			21%		



	Jan	Feb	Mar	Apr	May	Jun	Jul	Aug	Sep	Oct	Nov	Dec
# PTH-I	62			64			88			81		
# PTH-I > 300	41			40			41			42		
Pop. Mean	391			419			368			373		
Std. Deviation	237			236			308			314		
% PTH-I > 300	66%			63%			47%			52%		



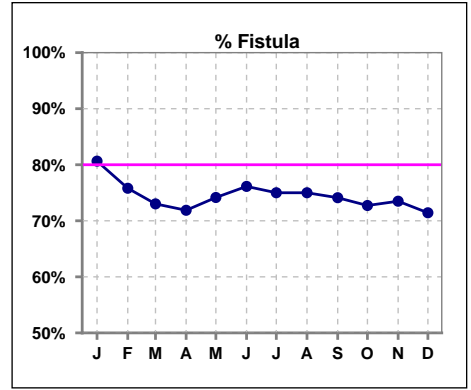
	Jan	Feb	Mar	Apr	May	Jun	Jul	Aug	Sep	Oct	Nov	Dec
# PTH-I	62			64			88			81		
# PTH-I > 400	26			32			28			26		
Pop. Mean	391			419			368			373		
Std. Deviation	237			236			308			314		
% PTH-I > 400	42%			50%			32%			32%		



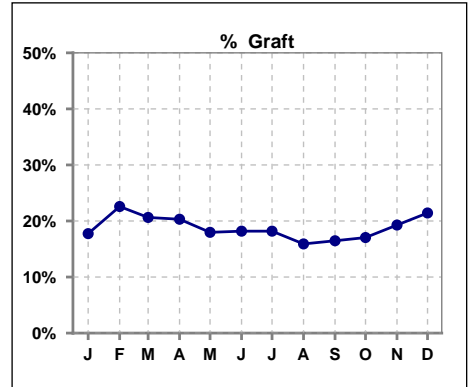
Methodology: a) All labs for 'Adequacy of Dialysis', 'Nutrition', 'Osteodystrophy', 'Anemia' and 'Diabetes' based on last value of month; b) BP's and #L processed are average of all values for month; c) Access data takes last access of month; d) Values for SGA and 'Infection Control' use most recent result.

IV. ACCESS

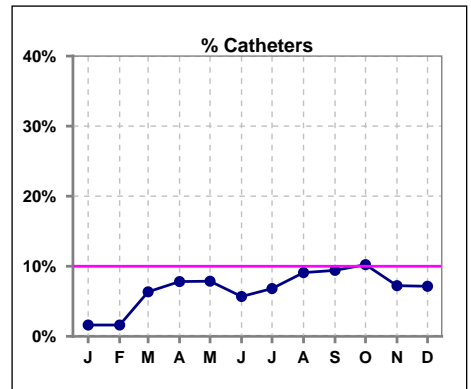
	Jan	Feb	Mar	Apr	May	Jun	Jul	Aug	Sep	Oct	Nov	Dec
# Access	62	62	63	64	89	88	88	88	85	88	83	70
# Fistula	50	47	46	46	66	67	66	66	63	64	61	50
% Fistula	81%	76%	73%	72%	74%	76%	75%	75%	74%	73%	73%	71%



	Jan	Feb	Mar	Apr	May	Jun	Jul	Aug	Sep	Oct	Nov	Dec
# Access	62	62	63	64	89	88	88	88	85	88	83	70
# Graft	11	14	13	13	16	16	16	14	14	15	16	15
% Graft	18%	23%	21%	20%	18%	18%	18%	16%	16%	17%	19%	21%



	Jan	Feb	Mar	Apr	May	Jun	Jul	Aug	Sep	Oct	Nov	Dec
# Access	62	62	63	64	89	88	88	88	85	88	83	70
# Catheters	1	1	4	5	7	5	6	8	8	9	6	5
% Catheters	2%	2%	6%	8%	8%	6%	7%	9%	9%	10%	7%	7%



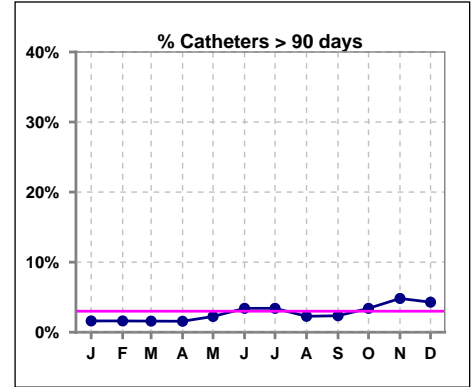
Methodology: a) All labs for 'Adequacy of Dialysis', 'Nutrition', 'Osteodystrophy', 'Anemia' and 'Diabetes' based on last value of month; b) BP's and #L processed are average of all values for month; c) Access data takes last access of month; d) Values for SGA and 'Infection Control' use most recent result.

IV. ACCESS - CONT.

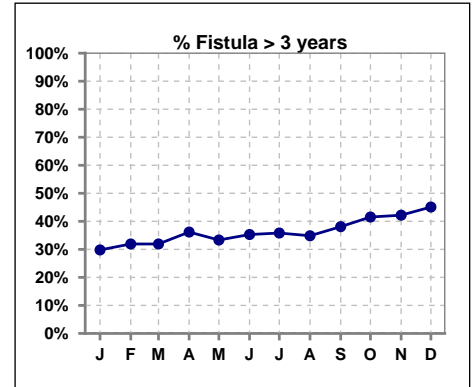
Catheters > 90 days

	Jan	Feb	Mar	Apr	May	Jun	Jul	Aug	Sep	Oct	Nov	Dec
# Access	62	62	63	64	89	88	88	88	85	88	83	70
# Catheters	1	1	1	1	2	3	3	2	2	3	4	3
% Catheters	2%	2%	2%	2%	2%	3%	3%	2%	2%	3%	5%	4%

Definition: Catheter in use on last treatment of the month



	Jan	Feb	Mar	Apr	May	Jun	Jul	Aug	Sep	Oct	Nov	Dec
# Fistula	47	47	47	47	66	68	67	66	63	65	64	51
# Fistula > 3 yrs	14	15	15	17	22	24	24	23	24	27	27	23
% Fistula > 3 yrs	30%	32%	32%	36%	33%	35%	36%	35%	38%	42%	42%	45%



All rates are calculated per 100 patient-month

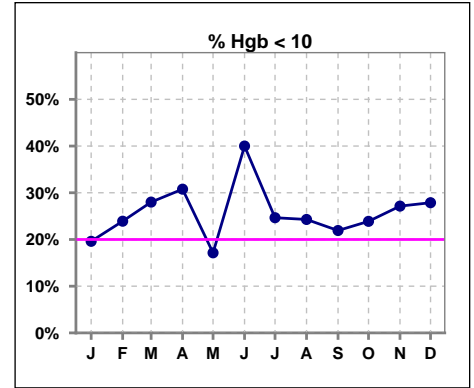
(number of infections/number of accesses x100)

BKC	Total Fistula	Fistula Infected	Fistula ARB Rate	National Rate	Total Grafts	Graft Infected	Graft ARB Rate	National Rate	Total Cath	Cath Infected	Cath ARB Rate	National Rate	Total Accesses	Total Access Infected	All ARB Rate Per 100 pt- Months	National Rate
2014-2015																
Month																
Dec	44	0	0.00	0.23	15	0	0.00	1.51	4	0	0.00	2.55	63	0	0	
Jan	47	0	0.00	0.23	15	0	0.00	1.51	2	0	0.00	2.55	64	0	0	
Feb	47	0	0.00	0.23	14	0	0.00	1.51	1	0	0.00	2.55	62	0	0	
Mar	48	0	0.00	0.23	13	0	0.00	0.51	2	0	0.00	2.55	63	0	0	
April	46	0	0.00	0.23	13	0	0.00	0.51	5	0	0.00	2.55	64	0	0	
May	47	1	2.13	0.23	13	0	0.00	0.51	5	0	0.00	2.55	65	1	1.54	
June	69	0	0.00	0.23	16	0	0.00	0.51	5	0	0.00	2.55	90	0	0	
July	67	0	0.00	0.23	15	0	0.00	0.51	4	0	0.00	2.55	86	0	0	
Aug	65	0	0.00	0.23	16	0	0.00	0.51	6	0	0.00	2.55	87	0	0	
Sept	63	0	0.00	0.23	15	0	0.00	0.51	6	0	0.00	2.55	86	0	0	
Oct	63	0	0.00	0.23	16	0	0.00	1.51	8	0	0.00	2.55	87	0	0	
Nov	65	0	0.00	0.23	16	0	0.00	1.51	8	0	0.00	2.55	89	0	0	
Annual Total:	480	1	0.21	0.23	130	0	0.00	0.51	34	0	0.00	2.55	644	1	0.155	0.88

V. ANEMIA

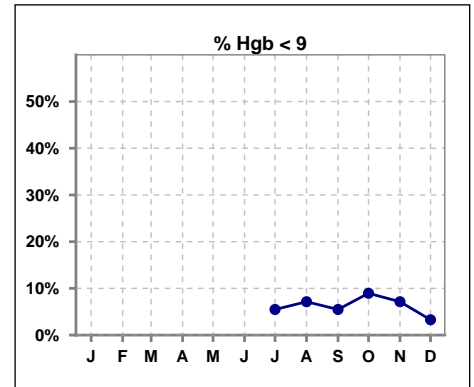
	Jan	Feb	Mar	Apr	May	Jun	Jul	Aug	Sep	Oct	Nov	Dec
# Hgb	51	46	50	52	70	75	73	70	73	67	70	61
# Hgb < 10	10	11	14	16	12	30	18	17	16	16	19	17
Pop. Mean	10.6	10.6	10.3	10.6	10.6	10.3	10.5	10.5	10.6	10.5	10.5	10.3
Std. Deviation	1.3	1.3	1.1	1.0	1.1	1.2	1.0	1.0	1.2	1.2	1.1	0.8
% Hgb < 10	20%	24%	28%	31%	17%	40%	25%	24%	22%	24%	27%	28%

Note: Excludes patients who received no ESA in month.



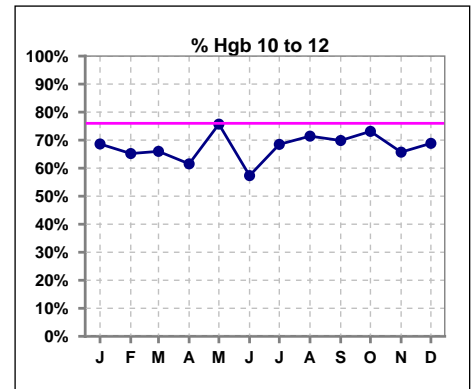
	Jan	Feb	Mar	Apr	May	Jun	Jul	Aug	Sep	Oct	Nov	Dec
# Hgb							73	70	73	67	70	61
# Hgb < 9							4	5	4	6	5	2
Pop. Mean							10.5	10.5	10.6	10.5	10.5	10.3
Std. Deviation							1.0	1.0	1.2	1.2	1.1	0.8
% Hgb < 9							5%	7%	5%	9%	7%	3%

Note: Excludes patients who received no ESA in month.



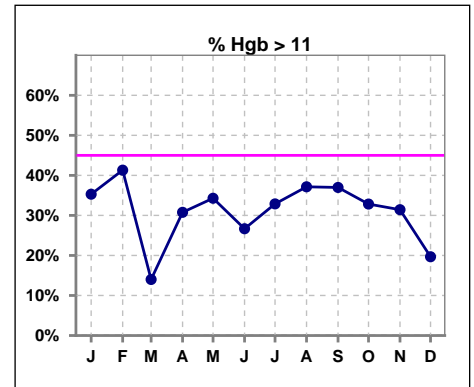
	Jan	Feb	Mar	Apr	May	Jun	Jul	Aug	Sep	Oct	Nov	Dec
# Hgb	51	46	50	52	70	75	73	70	73	67	70	61
# Hgb 10 to 12	35	30	33	32	53	43	50	50	51	49	46	42
Pop. Mean	10.6	10.6	10.3	10.6	10.6	10.3	10.5	10.5	10.6	10.5	10.5	10.3
Std. Deviation	1.3	1.3	1.1	1.0	1.1	1.2	1.0	1.0	1.2	1.2	1.1	0.8
% Hgb 10 to 12	69%	65%	66%	62%	76%	57%	68%	71%	70%	73%	66%	69%

Note: Excludes patients who received no ESA in month.



	Jan	Feb	Mar	Apr	May	Jun	Jul	Aug	Sep	Oct	Nov	Dec
# Hgb	51	46	50	52	70	75	73	70	73	67	70	61
# Hgb > 11	18	19	7	16	24	20	24	26	27	22	22	12
Pop. Mean	10.6	10.6	10.3	10.6	10.6	10.3	10.5	10.5	10.6	10.5	10.5	10.3
Std. Deviation	1.3	1.3	1.1	1.0	1.1	1.2	1.0	1.0	1.2	1.2	1.1	0.8
% Hgb > 11	35%	41%	14%	31%	34%	27%	33%	37%	37%	33%	31%	20%

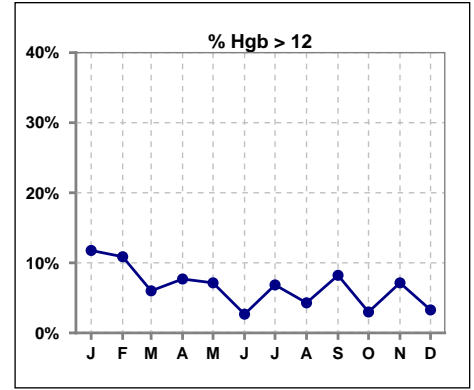
Note: Excludes patients who received no ESA in month.



V. ANEMIA - CONT.

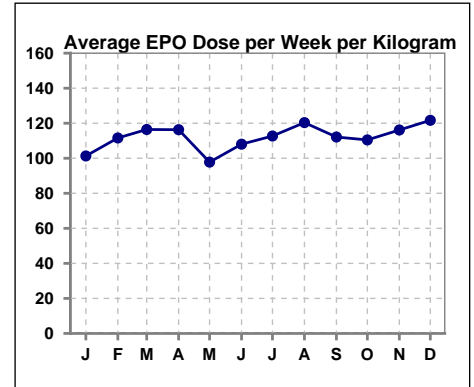
	Jan	Feb	Mar	Apr	May	Jun	Jul	Aug	Sep	Oct	Nov	Dec
# Hgb	51	46	50	52	70	75	73	70	73	67	70	61
# Hgb > 12	6	5	3	4	5	2	5	3	6	2	5	2
Pop. Mean	10.6	10.6	10.3	10.6	10.6	10.3	10.5	10.5	10.6	10.5	10.5	10.3
Std. Deviation	1.3	1.3	1.1	1.0	1.1	1.2	1.0	1.0	1.2	1.2	1.1	0.8
% Hgb > 12	12%	11%	6%	8%	7%	3%	7%	4%	8%	3%	7%	3%

Note: Excludes patients who received no ESA in month.



Average EPO Dose per Week per Kilogram

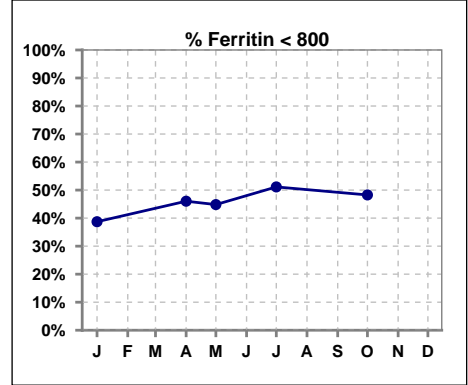
	Jan	Feb	Mar	Apr	May	Jun	Jul	Aug	Sep	Oct	Nov	Dec
# Average EPO	101.3	111.6	116.4	116.3	97.8	108.0	112.7	120.4	112.1	110.5	116.1	121.7



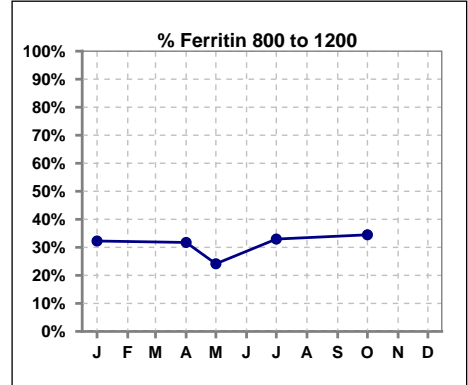
V. ANEMIA - CONT.

Iron Profile

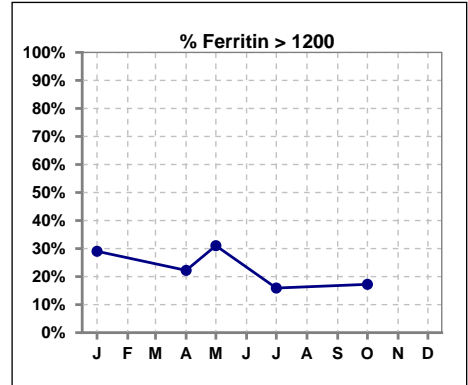
	Jan	Feb	Mar	Apr	May	Jun	Jul	Aug	Sep	Oct	Nov	Dec
# Ferritin	62			63	29		88			87		
# Ferritin < 800	24			29	13		45			42		
Pop. Mean	1014			919	874		815			860		
Std. Deviation	529			584	465		467			471		
% Ferritin < 800	39%			46%	45%		51%			48%		



	Jan	Feb	Mar	Apr	May	Jun	Jul	Aug	Sep	Oct	Nov	Dec
# Ferritin	62			63	29		88			87		
# Ferritin 800 to 1200	20			20	7		29			30		
Pop. Mean	1014			919	874		815			860		
Std. Deviation	529			584	465		467			471		
% Ferritin 800 to 1200	32%			32%	24%		33%			34%		



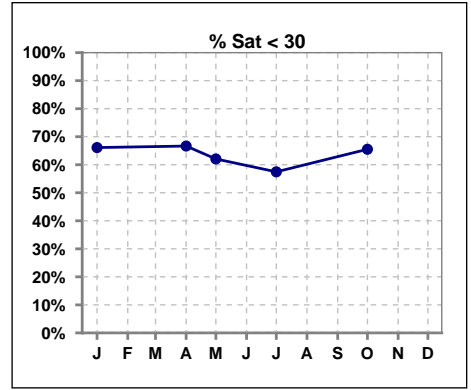
	Jan	Feb	Mar	Apr	May	Jun	Jul	Aug	Sep	Oct	Nov	Dec
# Ferritin	62			63	29		88			87		
# Ferritin > 1200	18			14	9		14			15		
Pop. Mean	1014			919	874		815			860		
Std. Deviation	529			584	465		467			471		
% Ferritin > 1200	29%			22%	31%		16%			17%		



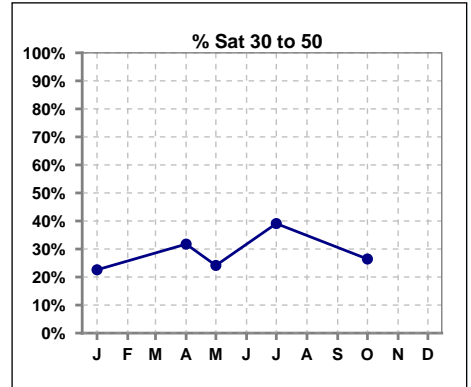
Methodology: a) All labs for 'Adequacy of Dialysis', 'Nutrition', 'Osteodystrophy', 'Anemia' and 'Diabetes' based on last value of month; b) BP's and #L processed are average of all values for month; c) Access data takes last access of month; d) Values for SGA and 'Infection Control' use most recent result.

V. ANEMIA - CONT.

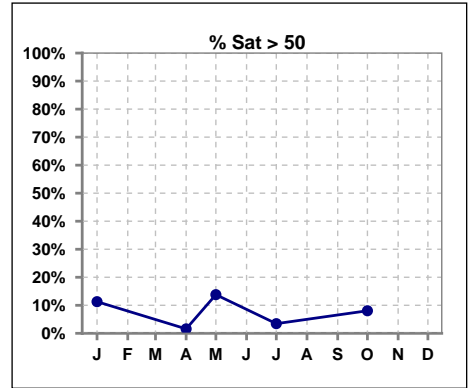
	Jan	Feb	Mar	Apr	May	Jun	Jul	Aug	Sep	Oct	Nov	Dec
# % Sat	62			63	29		87			87		
# % Sat < 30	41			42	18		50			57		
Pop. Mean	30			26	28		28			29		
Std. Deviation	16			10	18		11			14		
% % Sat < 30	66%			67%	62%		57%			66%		



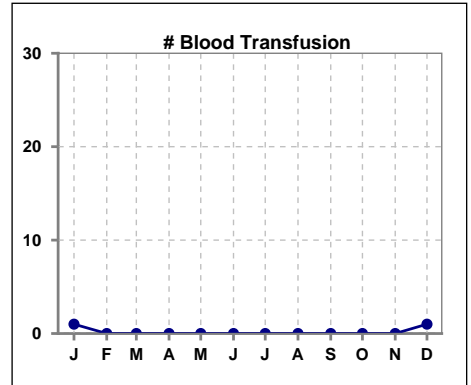
	Jan	Feb	Mar	Apr	May	Jun	Jul	Aug	Sep	Oct	Nov	Dec
# % Sat	62			63	29		87			87		
# % Sat 30 to 50	14			20	7		34			23		
Pop. Mean	30			26	28		28			29		
Std. Deviation	16			10	18		11			14		
% % Sat 30 to 50	23%			32%	24%		39%			26%		



	Jan	Feb	Mar	Apr	May	Jun	Jul	Aug	Sep	Oct	Nov	Dec
# % Sat	62			63	29		87			87		
# % Sat > 50	7			1	4		3			7		
Pop. Mean	30			26	28		28			29		
Std. Deviation	16			10	18		11			14		
% % Sat > 50	11%			2%	14%		3%			8%		



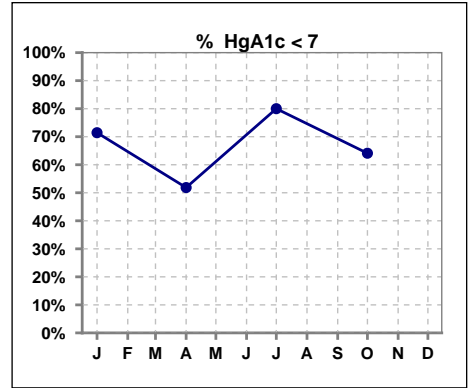
	Jan	Feb	Mar	Apr	May	Jun	Jul	Aug	Sep	Oct	Nov	Dec
# Patient	62	63	63	64	90	89	88	89	85	90	84	70
# Blood Transfusion	1	0	0	0	0	0	0	0	0	0	0	1



Methodology: a) All labs for 'Adequacy of Dialysis', 'Nutrition', 'Osteodystrophy', 'Anemia' and 'Diabetes' based on last value of month; b) BP's and #L processed are average of all values for month; c) Access data takes last access of month; d) Values for SGA and 'Infection Control' use most recent result.

VI. Diabetes

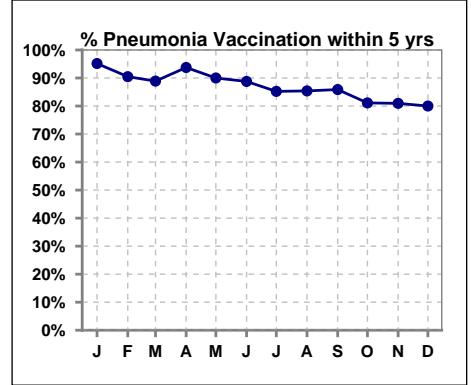
	Jan	Feb	Mar	Apr	May	Jun	Jul	Aug	Sep	Oct	Nov	Dec
# HgA1c	28			27			40			39		
# HgA1c < 7	20			14			32			25		
Pop. Mean	6.5			6.8			6.3			6.5		
Std. Deviation	1.41			1.30			1.15			1.23		
% HgA1c < 7	71%			52%			80%			64%		



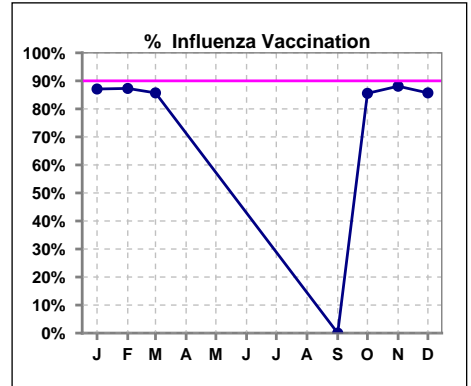
VII. Infection Control

Pneumonia vaccination within the past five years

	Jan	Feb	Mar	Apr	May	Jun	Jul	Aug	Sep	Oct	Nov	Dec
# Patient	62	63	63	64	90	89	88	89	85	90	84	70
# Pneumonia	59	57	56	60	81	79	75	76	73	73	68	56
% Pneumonia	95%	90%	89%	94%	90%	89%	85%	85%	86%	81%	81%	80%



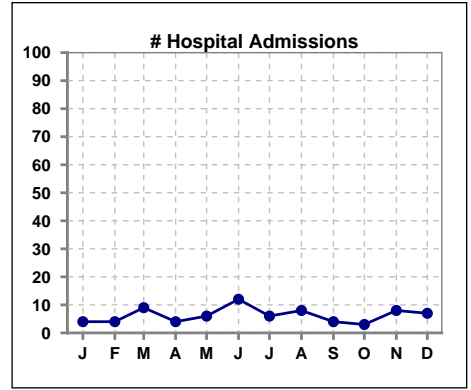
	Jan	Feb	Mar	Apr	May	Jun	Jul	Aug	Sep	Oct	Nov	Dec
# Patient	62	63	63						85	90	84	70
# Influenza	54	55	54						0	77	74	60
% Influenza	87%	87%	86%						0%	86%	88%	86%



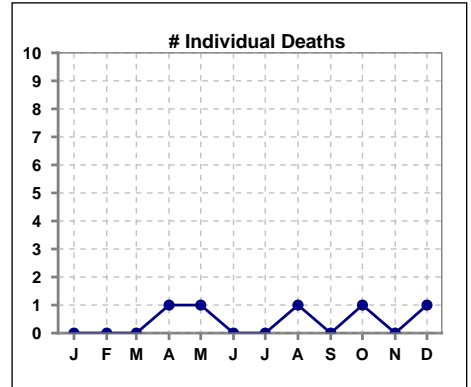
Methodology: a) All labs for 'Adequacy of Dialysis', 'Nutrition', 'Osteodystrophy', 'Anemia' and 'Diabetes' based on last value of month; b) BP's and #L processed are average of all values for month; c) Access data takes last access of month; d) Values for SGA and 'Infection Control' use most recent result.

VIII. Outcome measures

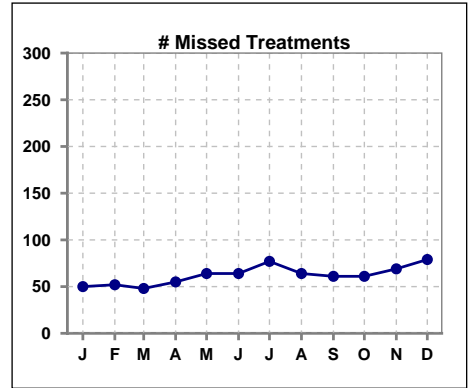
	Jan	Feb	Mar	Apr	May	Jun	Jul	Aug	Sep	Oct	Nov	Dec
# Patient	62	63	63	64	90	89	88	89	85	90	84	70
# Hospital Admissions	4	4	9	4	6	12	6	8	4	3	8	7



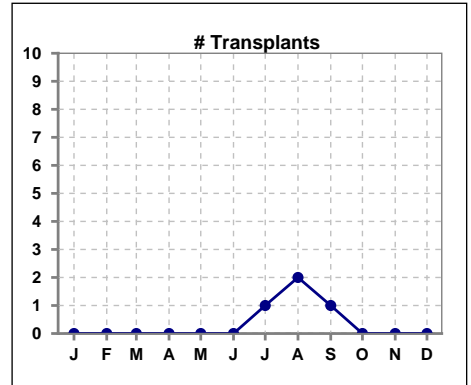
	Jan	Feb	Mar	Apr	May	Jun	Jul	Aug	Sep	Oct	Nov	Dec
# Patient	62	63	63	64	90	89	88	89	85	90	84	70
# Individual Deaths	0	0	0	1	1	0	0	1	0	1	0	1



	Jan	Feb	Mar	Apr	May	Jun	Jul	Aug	Sep	Oct	Nov	Dec
# Patient	62	63	63	64	90	89	88	89	85	90	84	70
# Missed Treatments	50	52	48	55	64	64	77	64	61	61	69	79



	Jan	Feb	Mar	Apr	May	Jun	Jul	Aug	Sep	Oct	Nov	Dec
# Patient	62	63	63	64	90	89	88	89	85	90	84	70
# Transplants	0	0	0	0	0	0	1	2	1	0	0	0



Methodology: a) All labs for 'Adequacy of Dialysis', 'Nutrition', 'Osteodystrophy', 'Anemia' and 'Diabetes' based on last value of month; b) BP's and #L processed are average of all values for month; c) Access data takes last access of month; d) Values for SGA and 'Infection Control' use most recent result.