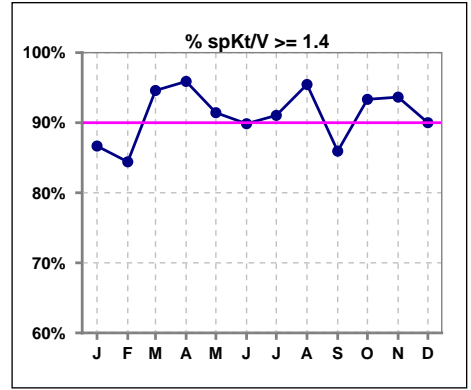
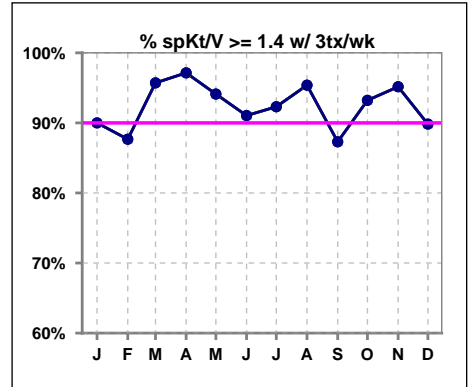


I. ADEQUACY OF DIALYSIS

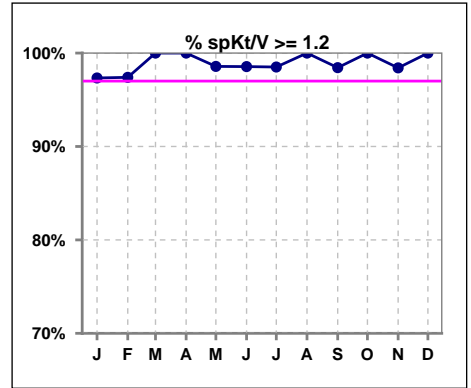
	Jan	Feb	Mar	Apr	May	Jun	Jul	Aug	Sep	Oct	Nov	Dec
# spKt/V	75	77	74	73	70	69	67	66	64	60	63	60
# spKt/V >= 1.4	65	65	70	70	64	62	61	63	55	56	59	54
Pop. Mean	1.68	1.68	1.74	1.69	1.67	1.70	1.71	1.71	1.69	1.70	1.69	1.69
Std. Deviation	0.27	0.28	0.26	0.21	0.25	0.26	0.26	0.23	0.26	0.23	0.27	0.24
% spKt/V >= 1.4	87%	84%	95%	96%	91%	90%	91%	95%	86%	93%	94%	90%



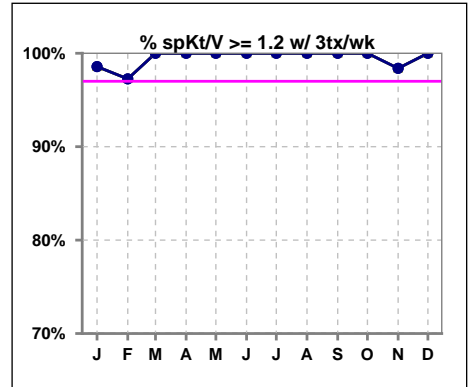
	Jan	Feb	Mar	Apr	May	Jun	Jul	Aug	Sep	Oct	Nov	Dec
# spKt/V w/ 3tx/wk	70	73	70	70	68	67	65	65	63	59	62	59
# spKt/V >=1.4 w/3tx/wk	63	64	67	68	64	61	60	62	55	55	59	53
Pop. Mean	1.70	1.70	1.76	1.70	1.68	1.71	1.71	1.72	1.70	1.70	1.70	1.69
Std. Deviation	0.26	0.28	0.26	0.21	0.24	0.25	0.25	0.23	0.25	0.24	0.26	0.23
% >=1.4 w/3tx/wk	90%	88%	96%	97%	94%	91%	92%	95%	87%	93%	95%	90%



	Jan	Feb	Mar	Apr	May	Jun	Jul	Aug	Sep	Oct	Nov	Dec
# spKt/V	75	77	74	73	70	69	67	66	64	60	63	60
# spKt/V >= 1.2	73	75	74	73	69	68	66	66	63	60	62	60
Pop. Mean	1.68	1.68	1.74	1.69	1.67	1.70	1.71	1.71	1.69	1.70	1.69	1.69
Std. Deviation	0.27	0.28	0.26	0.21	0.25	0.26	0.26	0.23	0.26	0.23	0.27	0.24
% spKt/V >= 1.2	97%	97%	100%	100%	99%	99%	99%	100%	98%	100%	98%	100%

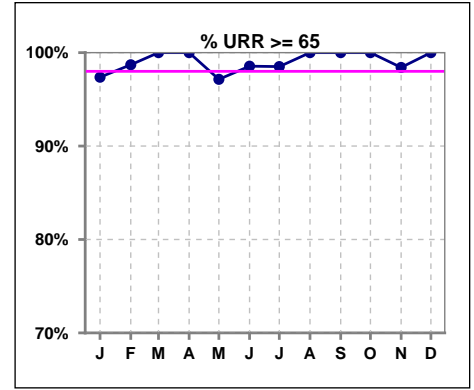


	Jan	Feb	Mar	Apr	May	Jun	Jul	Aug	Sep	Oct	Nov	Dec
# spKt/V w/ 3tx/wk	70	73	70	70	68	67	65	65	63	59	62	59
# spKt/V >=1.2 w/3tx/wk	69	71	70	70	68	67	65	65	63	59	61	59
Pop. Mean	1.70	1.70	1.76	1.70	1.68	1.71	1.71	1.72	1.70	1.70	1.70	1.69
Std. Deviation	0.26	0.28	0.26	0.21	0.24	0.25	0.25	0.23	0.25	0.24	0.26	0.23
% >=1.2 w/3tx/wk	99%	97%	100%	100%	100%	100%	100%	100%	100%	100%	98%	100%

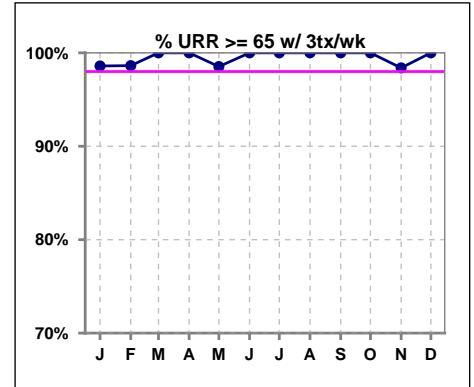


I. ADEQUACY OF DIALYSIS - CONT.

	Jan	Feb	Mar	Apr	May	Jun	Jul	Aug	Sep	Oct	Nov	Dec
# URR	76	77	74	73	70	69	67	66	64	60	63	60
# URR >= 65	74	76	74	73	68	68	66	66	64	60	62	60
Pop. Mean	77	76	78	77	76	77	77	77	77	77	77	77
Std. Deviation	5.63	5.94	4.51	3.94	4.86	5.09	4.92	4.25	4.96	4.41	5.08	4.65
% URR >= 65	97%	99%	100%	100%	97%	99%	99%	100%	100%	100%	98%	100%



	Jan	Feb	Mar	Apr	May	Jun	Jul	Aug	Sep	Oct	Nov	Dec
# URR w/ 3tx/wk	71	73	70	70	68	67	65	65	63	59	62	59
# URR>=65 w/ 3tx/wk	70	72	70	70	67	67	65	65	63	59	61	59
Pop. Mean	77	77	78	77	77	77	77	77	77	77	77	77
Std. Deviation	5.21	5.89	4.39	3.85	4.56	4.69	4.68	4.23	4.91	4.41	5.02	4.64
% URR>=65 w/ 3tx/wk	99%	99%	100%	100%	99%	100%	100%	100%	100%	100%	98%	100%

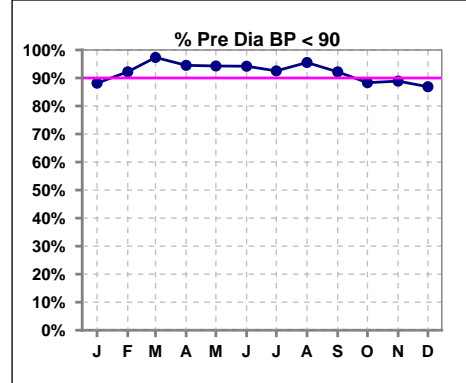


Methodology: a) All labs for 'Adequacy of Dialysis', 'Nutrition', 'Osteodystrophy', 'Anemia' and 'Diabetes' based on last value of month; b) BP's and #L processed are average of all values for month; c) Access data takes last access of month; d) Values for SGA and 'Infection Control' use most recent result.

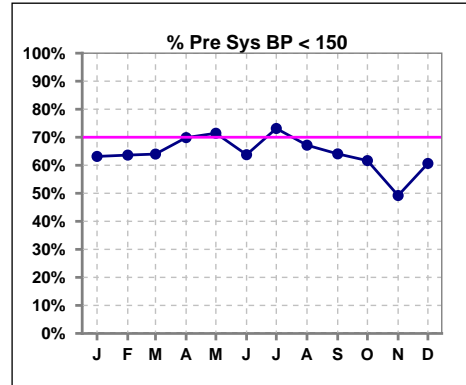
I. ADEQUACY OF DIALYSIS - CONT.

Blood Pressure Control (Pre)

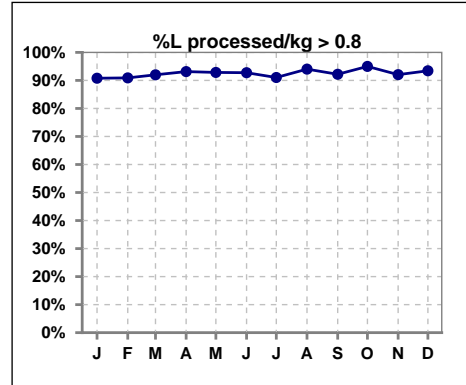
	Jan	Feb	Mar	Apr	May	Jun	Jul	Aug	Sep	Oct	Nov	Dec
# Pre Dia BP	76	77	75	73	70	69	67	67	64	60	63	61
# Pre Dia BP < 90	67	71	73	69	66	65	62	64	59	53	56	53
Pop. Mean	73	73	72	71	71	72	70	71	72	73	74	72
Std. Deviation	12.9	11.0	9.9	10.8	11.5	10.6	11.4	11.4	12.4	13.1	12.4	12.7
% Pre Dia BP < 90	88%	92%	97%	95%	94%	94%	93%	96%	92%	88%	89%	87%



	Jan	Feb	Mar	Apr	May	Jun	Jul	Aug	Sep	Oct	Nov	Dec
# Pre Sys BP	76	77	75	73	70	69	67	67	64	60	63	61
# Pre Sys BP < 150	48	49	48	51	50	44	49	45	41	37	31	37
Pop. Mean	142	142	141	139	139	140	138	138	140	143	145	141
Std. Deviation	20.6	20.0	19.0	18.1	19.7	19.9	19.9	20.6	21.9	22.1	22.9	22.4
%Pre Sys BP <150	63%	64%	64%	70%	71%	64%	73%	67%	64%	62%	49%	61%

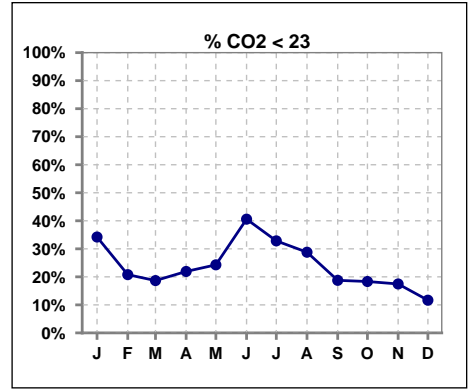


	Jan	Feb	Mar	Apr	May	Jun	Jul	Aug	Sep	Oct	Nov	Dec
# L processed/kg	76	77	75	73	70	69	67	67	64	60	63	61
# L processed/kg>0.8	69	70	69	68	65	64	61	63	59	57	58	57
Pop. Mean	1	1	1	1	1	1	1	1	1	1	1	1
Std. Deviation	0.3	0.3	0.2	0.2	0.2	0.3	0.3	0.3	0.3	0.3	0.3	0.3
% L processed/kg>0.8	91%	91%	92%	93%	93%	93%	91%	94%	92%	95%	92%	93%

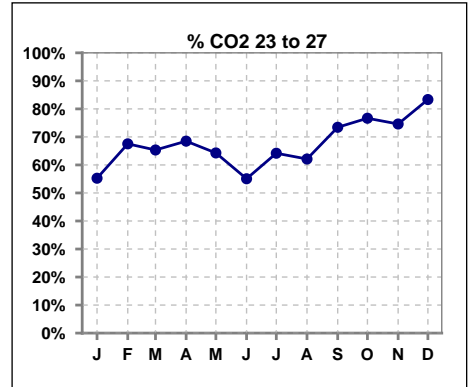


I. ADEQUACY OF DIALYSIS - CONT.

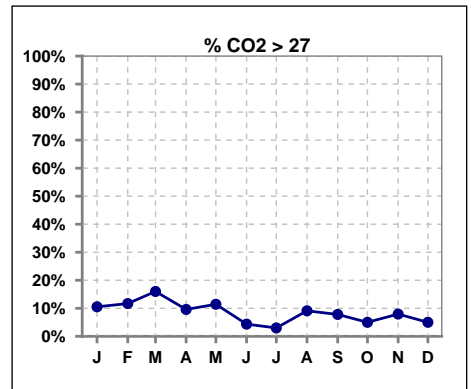
	Jan	Feb	Mar	Apr	May	Jun	Jul	Aug	Sep	Oct	Nov	Dec
# CO2	76	77	75	73	70	69	67	66	64	60	63	60
# CO2 < 23	26	16	14	16	17	28	22	19	12	11	11	7
Pop. Mean	24	25	25	24	24	23	24	24	24	24	25	24
Std. Deviation	2.91	2.45	2.77	2.82	2.78	2.69	2.36	2.61	2.59	2.17	2.40	2.10
% CO2 < 23	34%	21%	19%	22%	24%	41%	33%	29%	19%	18%	17%	12%



	Jan	Feb	Mar	Apr	May	Jun	Jul	Aug	Sep	Oct	Nov	Dec
# CO2	76	77	75	73	70	69	67	66	64	60	63	60
# CO2 23 to 27	42	52	49	50	45	38	43	41	47	46	47	50
Pop. Mean	24	25	25	24	24	23	24	24	24	24	25	24
Std. Deviation	2.91	2.45	2.77	2.82	2.78	2.69	2.36	2.61	2.59	2.17	2.40	2.10
% CO2 23 to 27	55%	68%	65%	68%	64%	55%	64%	62%	73%	77%	75%	83%



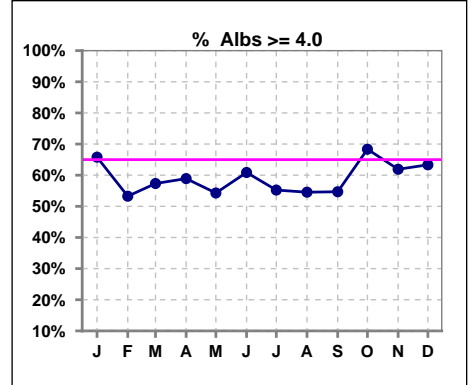
	Jan	Feb	Mar	Apr	May	Jun	Jul	Aug	Sep	Oct	Nov	Dec
# CO2	76	77	75	73	70	69	67	66	64	60	63	60
# CO2 > 27	8	9	12	7	8	3	2	6	5	3	5	3
Pop. Mean	24	25	25	24	24	23	24	24	24	24	25	24
Std. Deviation	2.91	2.45	2.77	2.82	2.78	2.69	2.36	2.61	2.59	2.17	2.40	2.10
% CO2 > 27	11%	12%	16%	10%	11%	4%	3%	9%	8%	5%	8%	5%



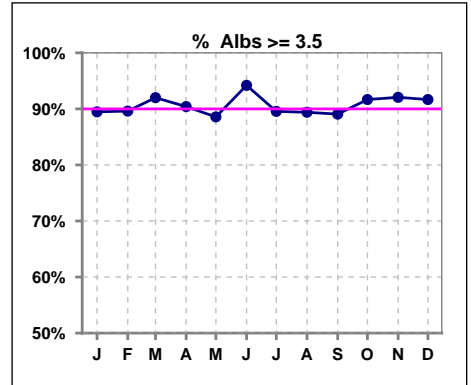
*Albumin values use BCG method - as of July 2001

II. NUTRITION

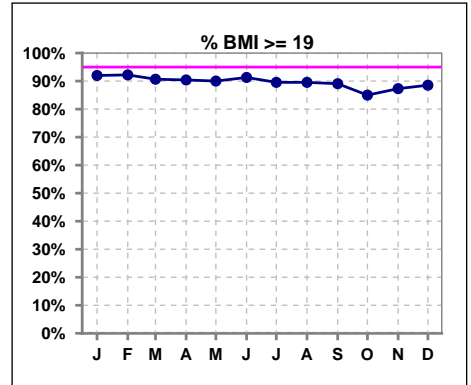
	Jan	Feb	Mar	Apr	May	Jun	Jul	Aug	Sep	Oct	Nov	Dec
# Albumin	76	77	75	73	70	69	67	66	64	60	63	60
# Albumin >= 4.0	50	41	43	43	38	42	37	36	35	41	39	38
Pop. Mean	4.0	4.0	4.0	3.9	3.9	4.0	4.0	3.9	3.9	4.0	4.0	4.0
Std. Deviation	0.37	0.37	0.35	0.35	0.38	0.33	0.38	0.36	0.35	0.33	0.36	0.31
% Alb >= 4.0	66%	53%	57%	59%	54%	61%	55%	55%	55%	68%	62%	63%



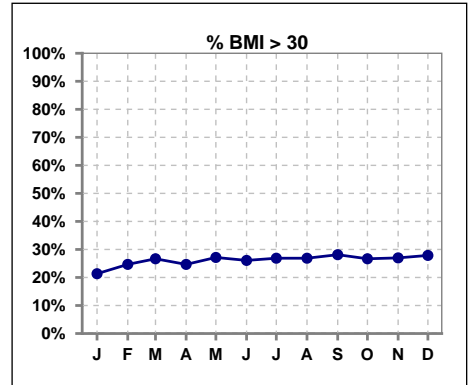
	Jan	Feb	Mar	Apr	May	Jun	Jul	Aug	Sep	Oct	Nov	Dec
# Albumin	76	77	75	73	70	69	67	66	64	60	63	60
# Albumin >= 3.5	68	69	69	66	62	65	60	59	57	55	58	55
Pop. Mean	4.0	4.0	4.0	3.9	3.9	4.0	4.0	3.9	3.9	4.0	4.0	4.0
Std. Deviation	0.37	0.37	0.35	0.35	0.38	0.33	0.38	0.36	0.35	0.33	0.36	0.31
% Alb >= 3.5	89%	90%	92%	90%	89%	94%	90%	89%	89%	92%	92%	92%



	Jan	Feb	Mar	Apr	May	Jun	Jul	Aug	Sep	Oct	Nov	Dec
# BMI	75	77	75	73	70	69	67	67	64	60	63	61
# BMI >= 19	69	71	68	66	63	63	60	60	57	51	55	54
Pop. Mean	27	27	27	27	27	27	27	27	27	26	26	26
Std. Deviation	6.4	6.2	6.2	6.5	6.6	6.7	6.9	7.2	6.9	6.5	6.2	6.0
% BMI >= 19	92%	92%	91%	90%	90%	91%	90%	90%	89%	85%	87%	89%



	Jan	Feb	Mar	Apr	May	Jun	Jul	Aug	Sep	Oct	Nov	Dec
# BMI	75	77	75	73	70	69	67	67	64	60	63	61
# BMI > 30	16	19	20	18	19	18	18	18	18	16	17	17
Pop. Mean	27	27	27	27	27	27	27	27	27	26	26	26
Std. Deviation	6.4	6.2	6.2	6.5	6.6	6.7	6.9	7.2	6.9	6.5	6.2	6.0
% BMI > 30	21%	25%	27%	25%	27%	26%	27%	27%	28%	27%	27%	28%

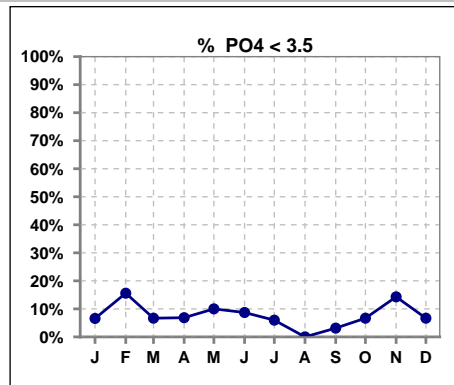


Methodology: a) All labs for 'Adequacy of Dialysis', 'Nutrition', 'Osteodystrophy', 'Anemia' and 'Diabetes' based on last value of month; b) BP's and #L processed are average of all values for month; c) Access data takes last access of month; d) Values for SGA and 'Infection Control' use most recent result.

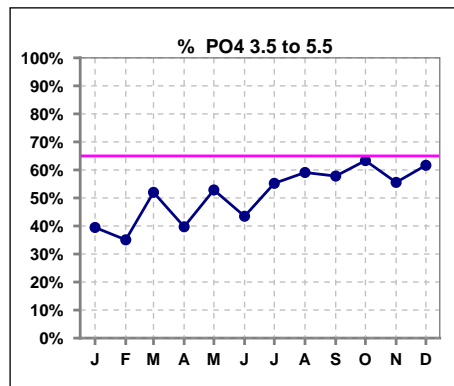
Lab methodology for PTH changed January 2012

III. OSTEODYSTROPHY

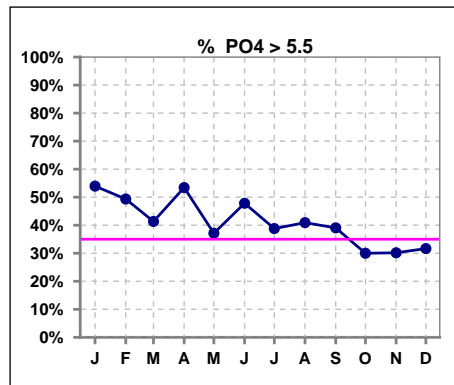
	Jan	Feb	Mar	Apr	May	Jun	Jul	Aug	Sep	Oct	Nov	Dec
# PO4	76	77	75	73	70	69	67	66	64	60	63	60
# PO4 < 3.5	5	12	5	5	7	6	4	0	2	4	9	4
Pop. Mean	5.7	5.5	5.3	5.6	5.3	5.7	5.4	5.6	5.3	5.1	5.0	5.3
Std. Deviation	1.64	1.93	1.53	1.68	1.64	1.77	1.48	1.65	1.53	1.33	1.50	1.59
% PO4 < 3.5	7%	16%	7%	7%	10%	9%	6%	0%	3%	7%	14%	7%



	Jan	Feb	Mar	Apr	May	Jun	Jul	Aug	Sep	Oct	Nov	Dec
# PO4	76	77	75	73	70	69	67	66	64	60	63	60
# PO4 3.5 to 5.5	30	27	39	29	37	30	37	39	37	38	35	37
Pop. Mean	5.7	5.5	5.3	5.6	5.3	5.7	5.4	5.6	5.3	5.1	5.0	5.3
Std. Deviation	1.64	1.93	1.53	1.68	1.64	1.77	1.48	1.65	1.53	1.33	1.50	1.59
% PO4 3.5 to 5.5	39%	35%	52%	40%	53%	43%	55%	59%	58%	63%	56%	62%



	Jan	Feb	Mar	Apr	May	Jun	Jul	Aug	Sep	Oct	Nov	Dec
# PO4	76	77	75	73	70	69	67	66	64	60	63	60
# PO4 > 5.5	41	38	31	39	26	33	26	27	25	18	19	19
Pop. Mean	5.7	5.5	5.3	5.6	5.3	5.7	5.4	5.6	5.3	5.1	5.0	5.3
Std. Deviation	1.64	1.93	1.53	1.68	1.64	1.77	1.48	1.65	1.53	1.33	1.50	1.59
% PO4 > 5.5	54%	49%	41%	53%	37%	48%	39%	41%	39%	30%	30%	32%

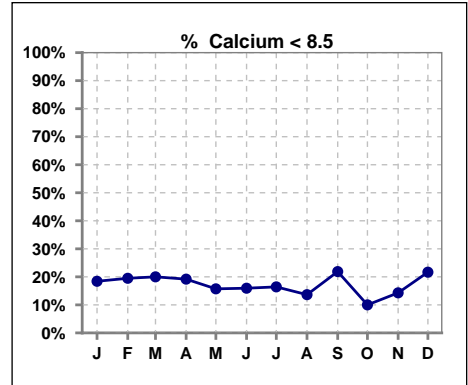


Methodology: a) All labs for 'Adequacy of Dialysis', 'Nutrition', 'Osteodystrophy', 'Anemia' and 'Diabetes' based on last value of month; b) BP's and #L processed are average of all values for month; c) Access data takes last access of month; d) Values for SGA and 'Infection Control' use most recent result.

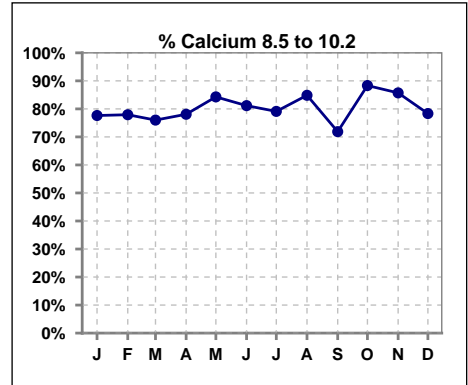
Lab methodology for PTH changed January 2012

III. OSTEODYSTROPHY - CONT.

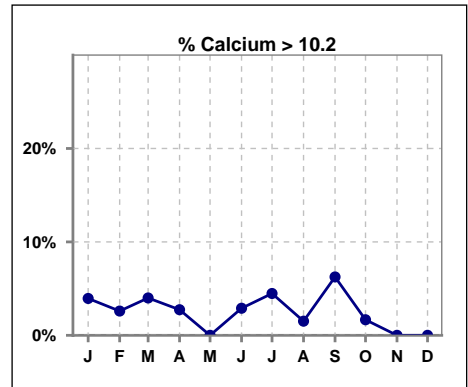
	Jan	Feb	Mar	Apr	May	Jun	Jul	Aug	Sep	Oct	Nov	Dec
# Calcium	76	77	75	73	70	69	67	66	64	60	63	60
# Calcium < 8.5	14	15	15	14	11	11	11	9	14	6	9	13
Pop. Mean	9.2	9.1	9.2	9.1	9.2	9.2	9.1	9.2	9.2	9.3	9.2	9.0
Std. Deviation	0.82	0.72	0.78	0.68	0.69	0.74	0.71	0.71	0.84	0.67	0.69	0.66
% Calcium < 8.5	18%	19%	20%	19%	16%	16%	16%	14%	22%	10%	14%	22%



	Jan	Feb	Mar	Apr	May	Jun	Jul	Aug	Sep	Oct	Nov	Dec
# Calcium	76	77	75	73	70	69	67	66	64	60	63	60
# Calcium 8.5 to 10.2	59	60	57	57	59	56	53	56	46	53	54	47
Pop. Mean	9.2	9.1	9.2	9.1	9.2	9.2	9.1	9.2	9.2	9.3	9.2	9.0
Std. Deviation	0.82	0.72	0.78	0.68	0.69	0.74	0.71	0.71	0.84	0.67	0.69	0.66
% Calcium 8.5 to 10.2	78%	78%	76%	78%	84%	81%	79%	85%	72%	88%	86%	78%



	Jan	Feb	Mar	Apr	May	Jun	Jul	Aug	Sep	Oct	Nov	Dec
# Calcium	76	77	75	73	70	69	67	66	64	60	63	60
# Calcium > 10.2	3	2	3	2	0	2	3	1	4	1	0	0
Pop. Mean	9.2	9.1	9.2	9.1	9.2	9.2	9.1	9.2	9.2	9.3	9.2	9.0
Std. Deviation	0.82	0.72	0.78	0.68	0.69	0.74	0.71	0.71	0.84	0.67	0.69	0.66
% Calcium > 10.2	4%	3%	4%	3%	0%	3%	4%	2%	6%	2%	0%	0%

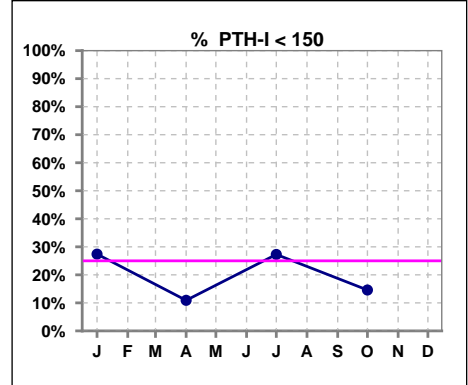


Methodology: a) All labs for 'Adequacy of Dialysis', 'Nutrition', 'Osteodystrophy', 'Anemia' and 'Diabetes' based on last value of month; b) BP's and #L processed are average of all values for month; c) Access data takes last access of month; d) Values for SGA and 'Infection Control' use most recent result.

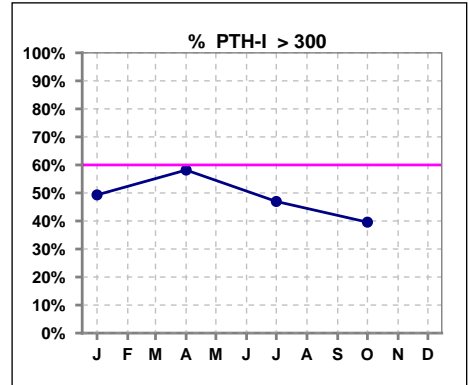
Lab methodology for PTH changed January 2012

III. OSTEODYSTROPHY - CONT.

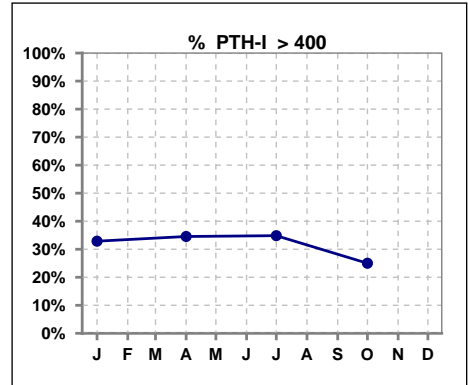
	Jan	Feb	Mar	Apr	May	Jun	Jul	Aug	Sep	Oct	Nov	Dec
# PTH-I	73			55			66			48		
# PTH-I < 150	20			6			18			7		
Pop. Mean	336			427			377			359		
Std. Deviation	241			298			336			327		
% PTH-I < 150	27%			11%			27%			15%		



	Jan	Feb	Mar	Apr	May	Jun	Jul	Aug	Sep	Oct	Nov	Dec
# PTH-I	73			55			66			48		
# PTH-I > 300	36			32			31			19		
Pop. Mean	336			427			377			359		
Std. Deviation	241			298			336			327		
% PTH-I > 300	49%			58%			47%			40%		



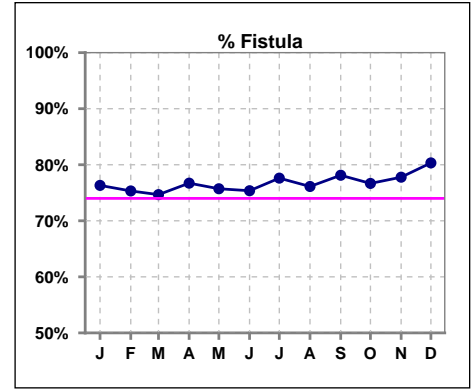
	Jan	Feb	Mar	Apr	May	Jun	Jul	Aug	Sep	Oct	Nov	Dec
# PTH-I	73			55			66			48		
# PTH-I > 400	24			19			23			12		
Pop. Mean	336			427			377			359		
Std. Deviation	241			298			336			327		
% PTH-I > 400	33%			35%			35%			25%		



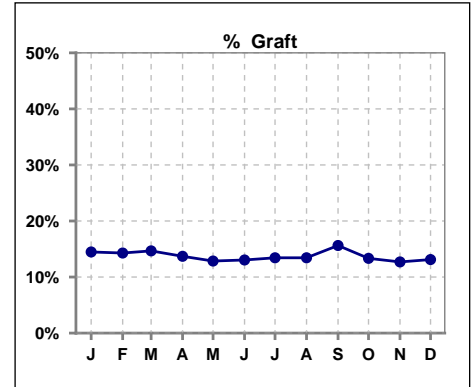
Methodology: a) All labs for 'Adequacy of Dialysis', 'Nutrition', 'Osteodystrophy', 'Anemia' and 'Diabetes' based on last value of month; b) BP's and #L processed are average of all values for month; c) Access data takes last access of month; d) Values for SGA and 'Infection Control' use most recent result.

IV. ACCESS

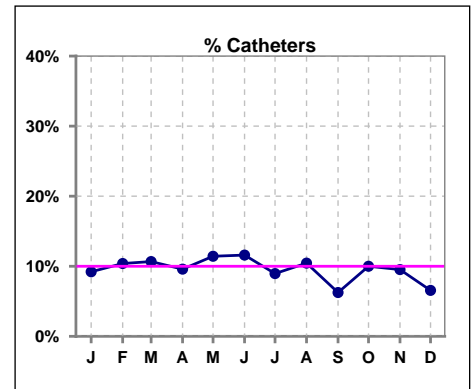
	Jan	Feb	Mar	Apr	May	Jun	Jul	Aug	Sep	Oct	Nov	Dec
# Access	76	77	75	73	70	69	67	67	64	60	63	61
# Fistula	58	58	56	56	53	52	52	51	50	46	49	49
% Fistula	76%	75%	75%	77%	76%	75%	78%	76%	78%	77%	78%	80%



	Jan	Feb	Mar	Apr	May	Jun	Jul	Aug	Sep	Oct	Nov	Dec
# Access	76	77	75	73	70	69	67	67	64	60	63	61
# Graft	11	11	11	10	9	9	9	9	10	8	8	8
% Graft	14%	14%	15%	14%	13%	13%	13%	13%	16%	13%	13%	13%



	Jan	Feb	Mar	Apr	May	Jun	Jul	Aug	Sep	Oct	Nov	Dec
# Access	76	77	75	73	70	69	67	67	64	60	63	61
# Catheters	7	8	8	7	8	8	6	7	4	6	6	4
% Catheters	9%	10%	11%	10%	11%	12%	9%	10%	6%	10%	10%	7%



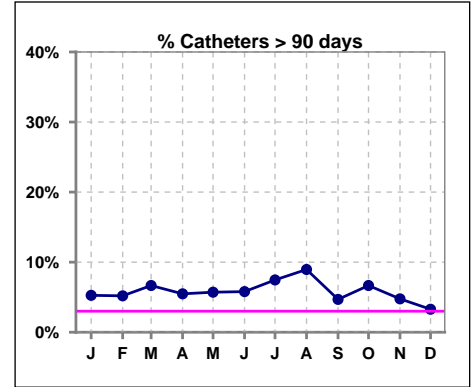
Methodology: a) All labs for 'Adequacy of Dialysis', 'Nutrition', 'Osteodystrophy', 'Anemia' and 'Diabetes' based on last value of month; b) BP's and #L processed are average of all values for month; c) Access data takes last access of month; d) Values for SGA and 'Infection Control' use most recent result.

IV. ACCESS - CONT.

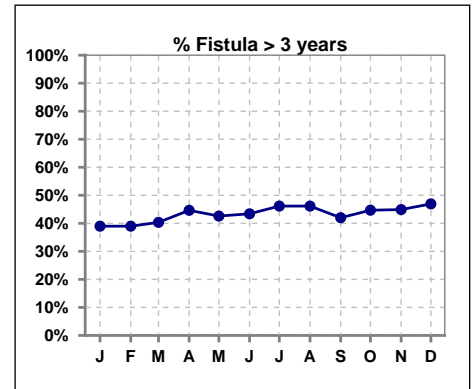
Catheters > 90 days

	Jan	Feb	Mar	Apr	May	Jun	Jul	Aug	Sep	Oct	Nov	Dec
# Access	76	77	75	73	70	69	67	67	64	60	63	61
# Catheters	4	4	5	4	4	4	5	6	3	4	3	2
% Catheters	5%	5%	7%	5%	6%	6%	7%	9%	5%	7%	5%	3%

Definition: Catheter in use on last treatment of the month



	Jan	Feb	Mar	Apr	May	Jun	Jul	Aug	Sep	Oct	Nov	Dec
# Fistula	59	59	57	56	54	53	52	52	50	47	49	49
# Fistula > 3 yrs	23	23	23	25	23	23	24	24	21	21	22	23
% Fistula > 3 yrs	39%	39%	40%	45%	43%	43%	46%	46%	42%	45%	45%	47%



Methodology: a) All labs for 'Adequacy of Dialysis', 'Nutrition', 'Osteodystrophy', 'Anemia' and 'Diabetes' based on last value of month; b) BP's and #L processed are average of all values for month; c) Access data takes last access of month; d) Values for SGA and 'Infection Control' use most recent result.

All rates are calculated per 100 patient-month

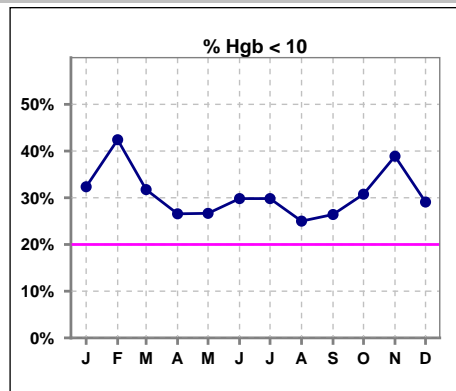
(number of infections/number of accesses x100)

LWKC	Total Fistula	Fistula Infected	Fistula ARB Rate	National Rate	Total Grafts	Graft Infected	Graft ARB Rate	National Rate	Total Cath	Cath Infected	Cath ARB Rate	National Rate	Total Accesses	Total Access Infected	All ARB Rate Per 100 pt- Months	National Rate
2013-2014 Month																
Dec	64	0	0	0.23	13	0	0	0.51	9	0	0	2.55	86	0	0	
Jan	64	0	0	0.23	13	0	0	0.51	8	0	0	2.55	85	0	0	
Feb	65	0	0	0.23	13	0	0	0.51	8	1	0	2.55	86	1	1.16279	
Mar	63	0	0	0.23	13	0	0	0.51	9	0	0	2.55	85	0	0	
April	58	0	0	0.23	11	0	0	0.51	9	0	0	2.55	78	0	0	
May	55	0	0	0.23	11	0	0	0.51	8	0	0	2.55	74	0	0	
June	54	0	0	0.23	9	0	0	0.51	7	0	0	2.55	70	0	0	
July	53	0	0	0.23	10	0	0	0.51	6	0	0	2.55	69	0	0	
Aug	50	0	0	0.23	9	0	0	0.51	7	0	0	2.55	66	0	0	
Sept	49	0	0	0.23	9	0	0	0.51	4	0	0	2.55	62	0	0	
Oct	50	0	0	0.23	9	0	0	0.51	5	0	0	2.55	64	0	0	
Nov	48	0	0	0.23	8	0	0	0.51	5	0	0	2.55	61	0	0	
Annual Total:	673	0	0		128	0	0		85	1	1.1765		886	1	0.113	0.88

V. ANEMIA

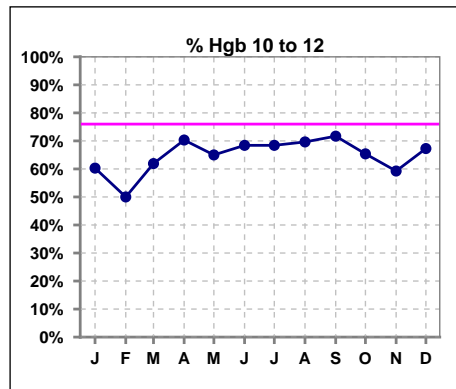
	Jan	Feb	Mar	Apr	May	Jun	Jul	Aug	Sep	Oct	Nov	Dec
# Hgb	68	66	63	64	60	57	57	56	53	52	54	55
# Hgb < 10	22	28	20	17	16	17	17	14	14	16	21	16
Pop. Mean	10.4	10.3	10.3	10.4	10.6	10.2	10.5	10.5	10.5	10.3	10.2	10.3
Std. Deviation	1.1	1.1	1.2	1.2	1.2	1.3	0.9	1.0	1.1	1.0	0.8	1.1
% Hgb < 10	32%	42%	32%	27%	27%	30%	30%	25%	26%	31%	39%	29%

Note: Excludes patients who received no ESA in month.



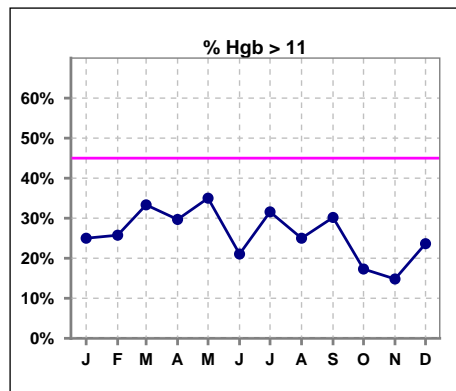
	Jan	Feb	Mar	Apr	May	Jun	Jul	Aug	Sep	Oct	Nov	Dec
# Hgb	68	66	63	64	60	57	57	56	53	52	54	55
# Hgb 10 to 12	41	33	39	45	39	39	39	39	38	34	32	37
Pop. Mean	10.4	10.3	10.3	10.4	10.6	10.2	10.5	10.5	10.5	10.3	10.2	10.3
Std. Deviation	1.1	1.1	1.2	1.2	1.2	1.3	0.9	1.0	1.1	1.0	0.8	1.1
% Hgb 10 to 12	60%	50%	62%	70%	65%	68%	68%	70%	72%	65%	59%	67%

Note: Excludes patients who received no ESA in month.



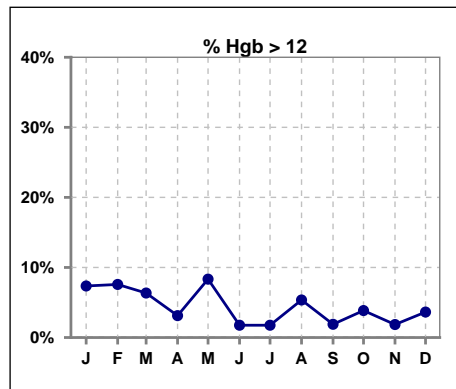
	Jan	Feb	Mar	Apr	May	Jun	Jul	Aug	Sep	Oct	Nov	Dec
# Hgb	68	66	63	64	60	57	57	56	53	52	54	55
# Hgb > 11	17	17	21	19	21	12	18	14	16	9	8	13
Pop. Mean	10.4	10.3	10.3	10.4	10.6	10.2	10.5	10.5	10.5	10.3	10.2	10.3
Std. Deviation	1.1	1.1	1.2	1.2	1.2	1.3	0.9	1.0	1.1	1.0	0.8	1.1
% Hgb > 11	25%	26%	33%	30%	35%	21%	32%	25%	30%	17%	15%	24%

Note: Excludes patients who received no ESA in month.



	Jan	Feb	Mar	Apr	May	Jun	Jul	Aug	Sep	Oct	Nov	Dec
# Hgb	68	66	63	64	60	57	57	56	53	52	54	55
# Hgb > 12	5	5	4	2	5	1	1	3	1	2	1	2
Pop. Mean	10.4	10.3	10.3	10.4	10.6	10.2	10.5	10.5	10.5	10.3	10.2	10.3
Std. Deviation	1.1	1.1	1.2	1.2	1.2	1.3	0.9	1.0	1.1	1.0	0.8	1.1
% Hgb > 12	7%	8%	6%	3%	8%	2%	2%	5%	2%	4%	2%	4%

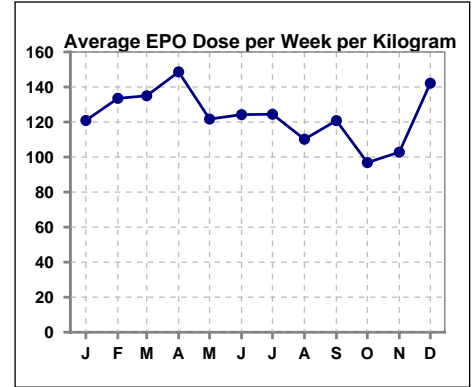
Note: Excludes patients who received no ESA in month.



V. ANEMIA - CONT.

Average EPO Dose per Week per Kilogram

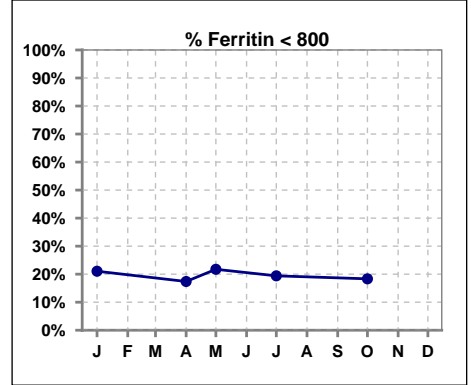
	Jan	Feb	Mar	Apr	May	Jun	Jul	Aug	Sep	Oct	Nov	Dec
# Average EPO	120.9	133.5	135.0	148.6	121.7	124.2	124.4	110.2	120.8	96.9	102.8	142.2



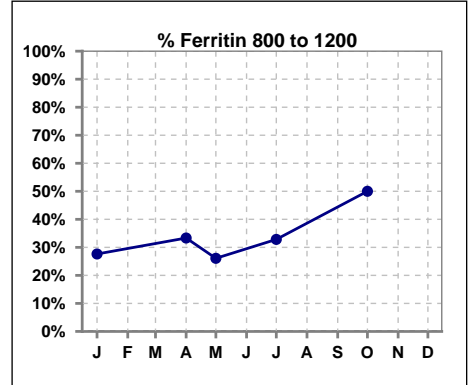
V. ANEMIA - CONT.

Iron Profile

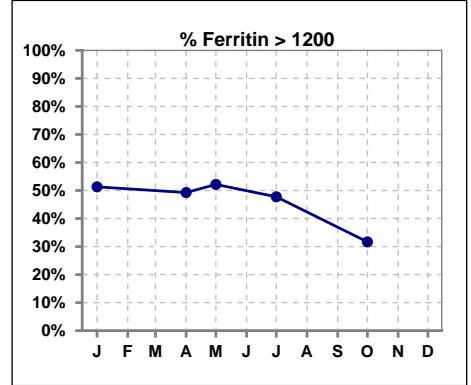
	Jan	Feb	Mar	Apr	May	Jun	Jul	Aug	Sep	Oct	Nov	Dec
# Ferritin	76			69	23		67			60		
# Ferritin < 800	16			12	5		13			11		
Pop. Mean	1160			1164	1166		1173			1095		
Std. Deviation	522			478	507		510			401		
% Ferritin < 800	21%			17%	22%		19%			18%		



	Jan	Feb	Mar	Apr	May	Jun	Jul	Aug	Sep	Oct	Nov	Dec
# Ferritin	76			69	23		67			60		
# Ferritin 800 to 1200	21			23	6		22			30		
Pop. Mean	1160			1164	1166		1173			1095		
Std. Deviation	522			478	507		510			401		
% Ferritin 800 to 1200	28%			33%	26%		33%			50%		

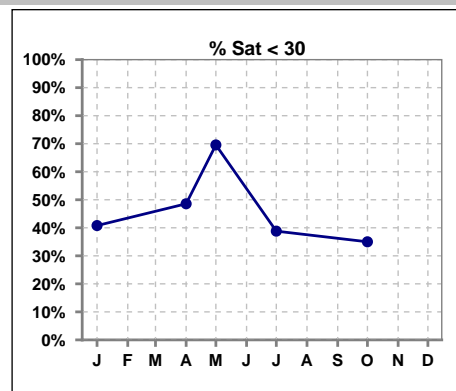


	Jan	Feb	Mar	Apr	May	Jun	Jul	Aug	Sep	Oct	Nov	Dec
# Ferritin	76			69	23		67			60		
# Ferritin > 1200	39			34	12		32			19		
Pop. Mean	1160			1164	1166		1173			1095		
Std. Deviation	522			478	507		510			401		
% Ferritin > 1200	51%			49%	52%		48%			32%		

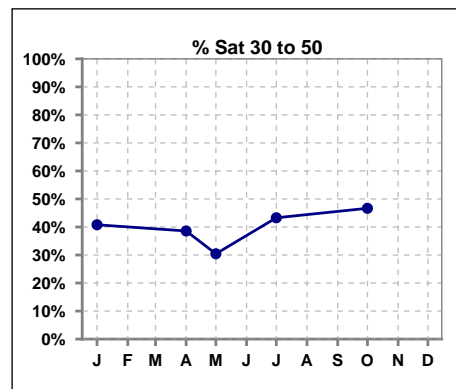


V. ANEMIA - CONT.

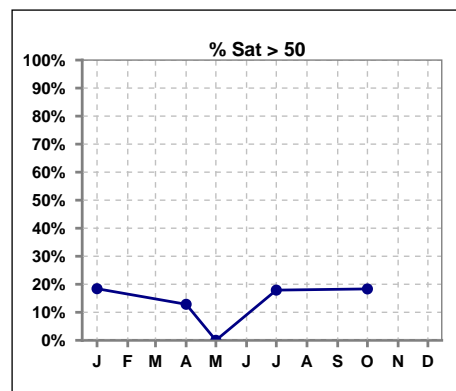
	Jan	Feb	Mar	Apr	May	Jun	Jul	Aug	Sep	Oct	Nov	Dec
# % Sat	76			70	23		67			60		
# % Sat < 30	31			34	16		26			21		
Pop. Mean	37			33	24		37			38		
Std. Deviation	19			17	9		21			21		
% % Sat < 30	41%			49%	70%		39%			35%		



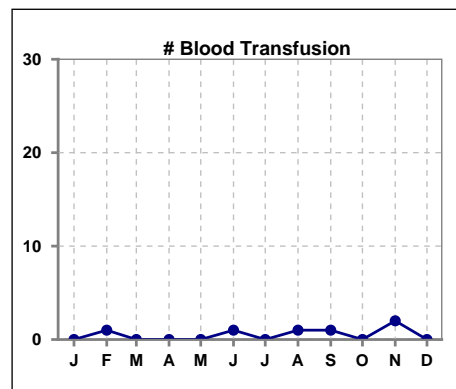
	Jan	Feb	Mar	Apr	May	Jun	Jul	Aug	Sep	Oct	Nov	Dec
# % Sat	76			70	23		67			60		
# % Sat 30 to 50	31			27	7		29			28		
Pop. Mean	37			33	24		37			38		
Std. Deviation	19			17	9		21			21		
% % Sat 30 to 50	41%			39%	30%		43%			47%		



	Jan	Feb	Mar	Apr	May	Jun	Jul	Aug	Sep	Oct	Nov	Dec
# % Sat	76			70	23		67			60		
# % Sat > 50	14			9	0		12			11		
Pop. Mean	37			33	24		37			38		
Std. Deviation	19			17	9		21			21		
% % Sat > 50	18%			13%	0%		18%			18%		

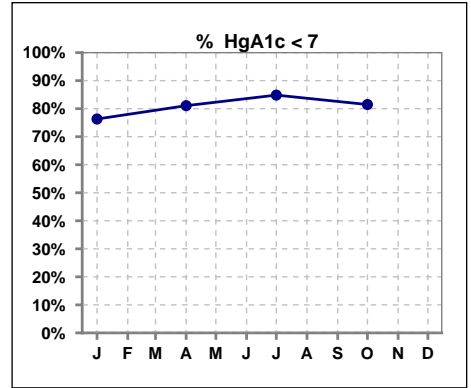


	Jan	Feb	Mar	Apr	May	Jun	Jul	Aug	Sep	Oct	Nov	Dec
# Patient	76	77	75	73	70	69	67	67	64	60	63	61
# Blood Transfusion	0	1	0	0	0	1	0	1	1	0	2	0



VI. Diabetes

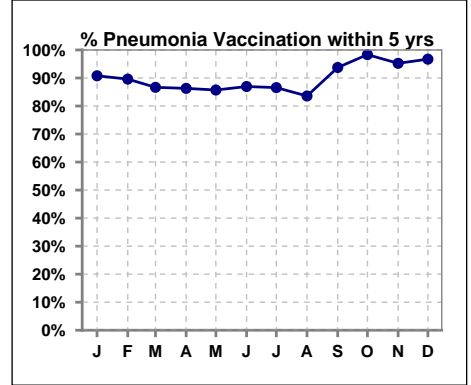
	Jan	Feb	Mar	Apr	May	Jun	Jul	Aug	Sep	Oct	Nov	Dec
# HgA1c	38			37			33			27		
# HgA1c < 7	29			30			28			22		
Pop. Mean	6.4			5.9			6.0			6.0		
Std. Deviation	1.10			0.99			1.14			0.99		
% HgA1c < 7	76%			81%			85%			81%		



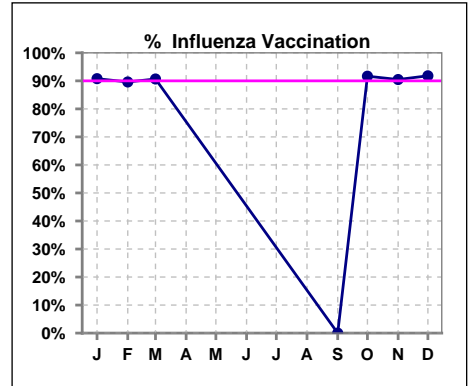
VII. Infection Control

Pneumonia vaccination within the past five years

	Jan	Feb	Mar	Apr	May	Jun	Jul	Aug	Sep	Oct	Nov	Dec
# Patient	76	77	75	73	70	69	67	67	64	60	63	61
# Pneumonia	69	69	65	63	60	60	58	56	60	59	60	59
% Pneumonia	91%	90%	87%	86%	86%	87%	87%	84%	94%	98%	95%	97%



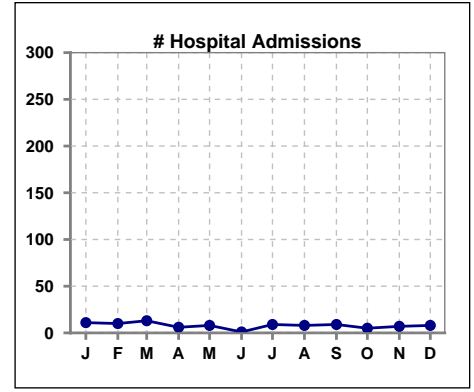
	Jan	Feb	Mar	Apr	May	Jun	Jul	Aug	Sep	Oct	Nov	Dec
# Patient	76	77	75						64	60	63	61
# Influenza	69	69	68						0	55	57	56
% Influenza	91%	90%	91%						0%	92%	90%	92%



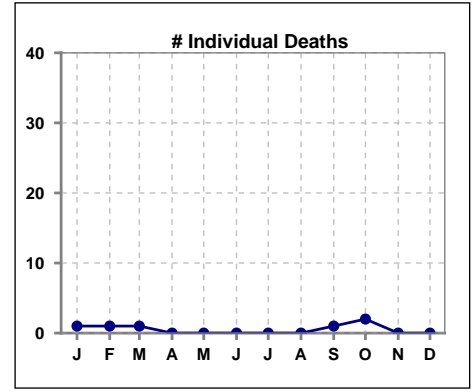
Methodology: a) All labs for 'Adequacy of Dialysis', 'Nutrition', 'Osteodystrophy', 'Anemia' and 'Diabetes' based on last value of month; b) BP's and #L processed are average of all values for month; c) Access data takes last access of month; d) Values for SGA and 'Infection Control' use most recent result.

VIII. Misc

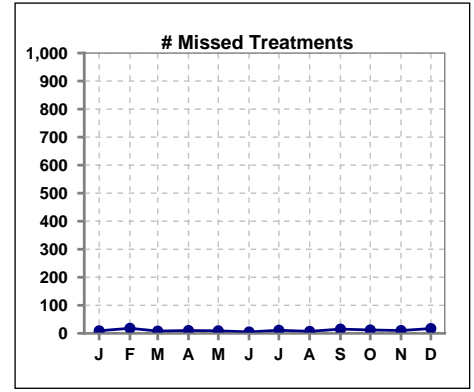
	Jan	Feb	Mar	Apr	May	Jun	Jul	Aug	Sep	Oct	Nov	Dec
# Patient	76	77	75	73	70	69	67	67	64	60	63	61
# Hospital Admissions	11	10	13	6	8	1	9	8	9	5	7	8



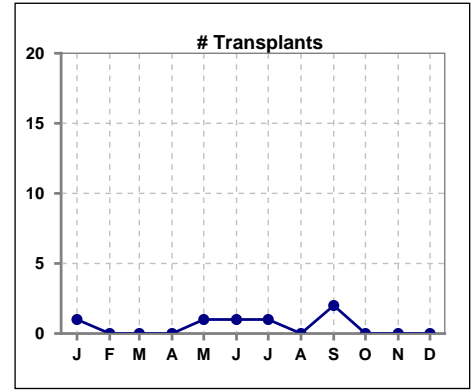
	Jan	Feb	Mar	Apr	May	Jun	Jul	Aug	Sep	Oct	Nov	Dec
# Patient	76	77	75	73	70	69	67	67	64	60	63	61
# Individual Deaths	1	1	1	0	0	0	0	0	1	2	0	0



	Jan	Feb	Mar	Apr	May	Jun	Jul	Aug	Sep	Oct	Nov	Dec
# Patient	76	77	75	73	70	69	67	67	64	60	63	61
# Missed Treatments	9	18	8	10	9	5	11	7	15	12	10	17



	Jan	Feb	Mar	Apr	May	Jun	Jul	Aug	Sep	Oct	Nov	Dec
# Patient	76	77	75	73	70	69	67	67	64	60	63	61
# Transplants	1	0	0	0	1	1	1	0	2	0	0	0



Methodology: a) All labs for 'Adequacy of Dialysis', 'Nutrition', 'Osteodystrophy', 'Anemia' and 'Diabetes' based on last value of month; b) BP's and #L processed are average of all values for month; c) Access data takes last access of month; d) Values for SGA and 'Infection Control' use most recent result.