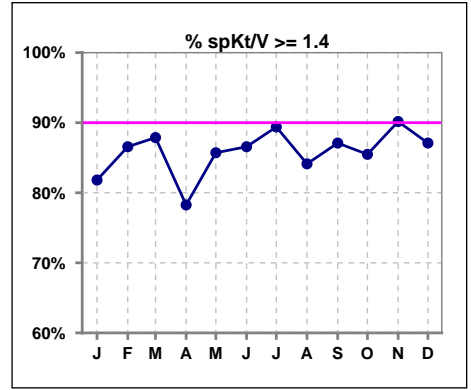
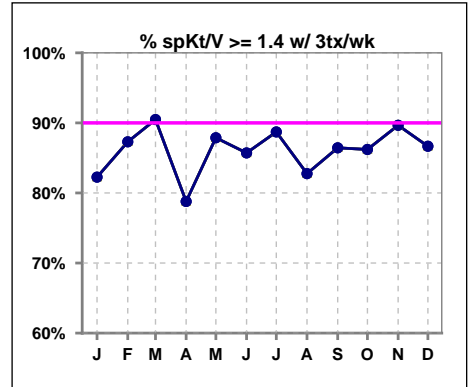


I. ADEQUACY OF DIALYSIS

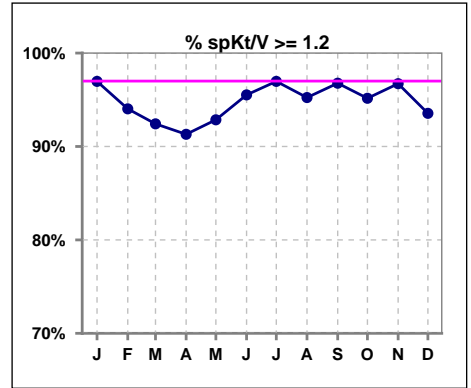
	Jan	Feb	Mar	Apr	May	Jun	Jul	Aug	Sep	Oct	Nov	Dec
# spKt/V	66	67	66	69	70	67	66	63	62	62	61	62
# spKt/V >= 1.4	54	58	58	54	60	58	59	53	54	53	55	54
Pop. Mean	1.71	1.71	1.72	1.66	1.67	1.69	1.70	1.66	1.69	1.66	1.69	1.70
Std. Deviation	0.33	0.35	0.37	0.37	0.36	0.32	0.34	0.32	0.32	0.31	0.29	0.33
% spKt/V >= 1.4	82%	87%	88%	78%	86%	87%	89%	84%	87%	85%	90%	87%



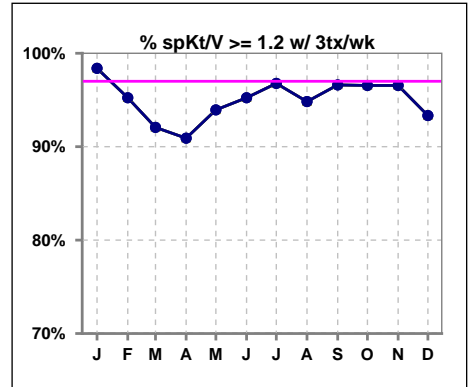
	Jan	Feb	Mar	Apr	May	Jun	Jul	Aug	Sep	Oct	Nov	Dec
# spKt/V w/ 3tx/wk	62	63	63	66	66	63	62	58	59	58	58	60
# spKt/V >= 1.4 w/3tx/wk	51	55	57	52	58	54	55	48	51	50	52	52
Pop. Mean	1.73	1.73	1.73	1.66	1.69	1.68	1.70	1.66	1.69	1.68	1.68	1.69
Std. Deviation	0.33	0.34	0.38	0.37	0.36	0.32	0.36	0.33	0.32	0.28	0.29	0.33
% >= 1.4 w/3tx/wk	82%	87%	90%	79%	88%	86%	89%	83%	86%	86%	90%	87%



	Jan	Feb	Mar	Apr	May	Jun	Jul	Aug	Sep	Oct	Nov	Dec
# spKt/V	66	67	66	69	70	67	66	63	62	62	61	62
# spKt/V >= 1.2	64	63	61	63	65	64	64	60	60	59	59	58
Pop. Mean	1.71	1.71	1.72	1.66	1.67	1.69	1.70	1.66	1.69	1.66	1.69	1.70
Std. Deviation	0.33	0.35	0.37	0.37	0.36	0.32	0.34	0.32	0.32	0.31	0.29	0.33
% spKt/V >= 1.2	97%	94%	92%	91%	93%	96%	97%	95%	97%	95%	97%	94%



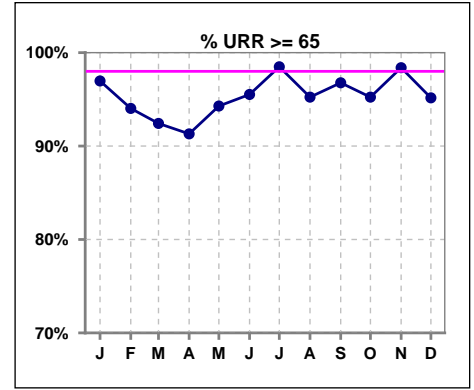
	Jan	Feb	Mar	Apr	May	Jun	Jul	Aug	Sep	Oct	Nov	Dec
# spKt/V w/ 3tx/wk	62	63	63	66	66	63	62	58	59	58	58	60
# spKt/V >= 1.2 w/3tx/wk	61	60	58	60	62	60	60	55	57	56	56	56
Pop. Mean	1.73	1.73	1.73	1.66	1.69	1.68	1.70	1.66	1.69	1.68	1.68	1.69
Std. Deviation	0.33	0.34	0.38	0.37	0.36	0.32	0.36	0.33	0.32	0.28	0.29	0.33
% >= 1.2 w/3tx/wk	98%	95%	92%	91%	94%	95%	97%	95%	97%	97%	97%	93%



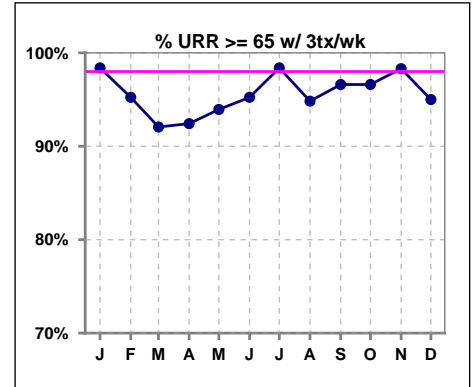
Methodology: a) All labs for 'Adequacy of Dialysis', 'Nutrition', 'Osteodystrophy', 'Anemia' and 'Diabetes' based on last value of month; b) BP's and #L processed are average of all values for month; c) Access data takes last access of month; d) Values for SGA and 'Infection Control' use most recent result.

I. ADEQUACY OF DIALYSIS - CONT.

	Jan	Feb	Mar	Apr	May	Jun	Jul	Aug	Sep	Oct	Nov	Dec
# URR	66	67	66	69	70	67	66	63	62	63	62	62
# URR >= 65	64	63	61	63	66	64	65	60	60	60	61	59
Pop. Mean	77	77	76	75	76	76	77	76	76	76	77	76
Std. Deviation	5.98	6.77	8.06	7.86	7.64	6.28	5.64	6.37	5.63	7.61	6.08	6.64
% URR >= 65	97%	94%	92%	91%	94%	96%	98%	95%	97%	95%	98%	95%



	Jan	Feb	Mar	Apr	May	Jun	Jul	Aug	Sep	Oct	Nov	Dec
# URR w/ 3tx/wk	62	63	63	66	66	63	62	58	59	59	59	60
# URR>=65 w/ 3tx/wk	61	60	58	61	62	60	61	55	57	57	58	57
Pop. Mean	77	77	76	75	76	76	77	75	76	76	76	76
Std. Deviation	5.52	6.22	8.08	7.86	7.64	6.38	5.81	6.54	5.74	5.82	6.14	6.73
% URR>=65 w/ 3tx/wk	98%	95%	92%	92%	94%	95%	98%	95%	97%	97%	98%	95%

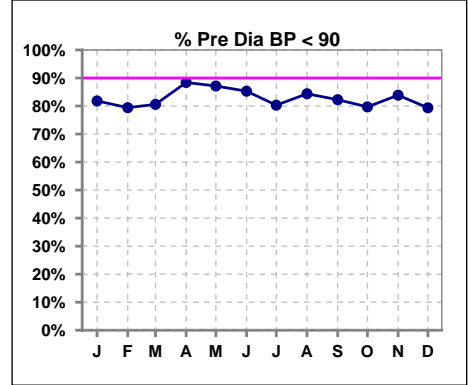


Methodology: a) All labs for 'Adequacy of Dialysis', 'Nutrition', 'Osteodystrophy', 'Anemia' and 'Diabetes' based on last value of month; b) BP's and #L processed are average of all values for month; c) Access data takes last access of month; d) Values for SGA and 'Infection Control' use most recent result.

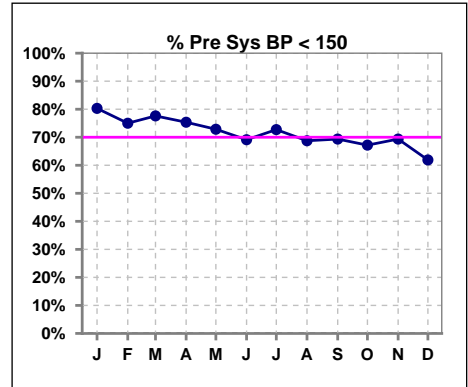
I. ADEQUACY OF DIALYSIS - CONT.

Blood Pressure Control (Pre)

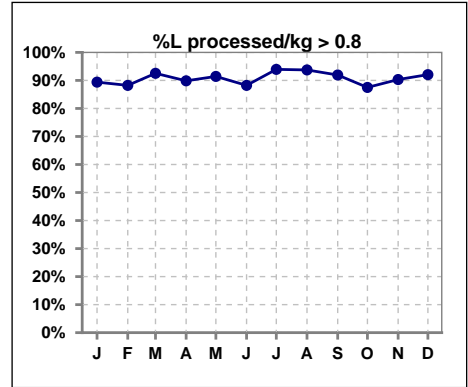
	Jan	Feb	Mar	Apr	May	Jun	Jul	Aug	Sep	Oct	Nov	Dec
# Pre Dia BP	66	68	67	69	70	68	66	64	62	64	62	63
# Pre Dia BP < 90	54	54	54	61	61	58	53	54	51	51	52	50
Pop. Mean	75	77	76	75	74	75	76	77	77	77	76	77
Std. Deviation	13.5	14.0	13.7	13.4	12.9	13.7	14.4	12.3	13.0	13.6	13.4	14.3
% Pre Dia BP < 90	82%	79%	81%	88%	87%	85%	80%	84%	82%	80%	84%	79%



	Jan	Feb	Mar	Apr	May	Jun	Jul	Aug	Sep	Oct	Nov	Dec
# Pre Sys BP	66	68	67	69	70	68	66	64	62	64	62	63
# Pre Sys BP < 150	53	51	52	52	51	47	48	44	43	43	43	39
Pop. Mean	137	138	136	136	135	136	135	139	139	139	139	141
Std. Deviation	18.6	19.3	21.4	20.2	21.4	20.2	21.8	21.5	22.4	21.4	24.2	24.0
%Pre Sys BP <150	80%	75%	78%	75%	73%	69%	73%	69%	69%	67%	69%	62%



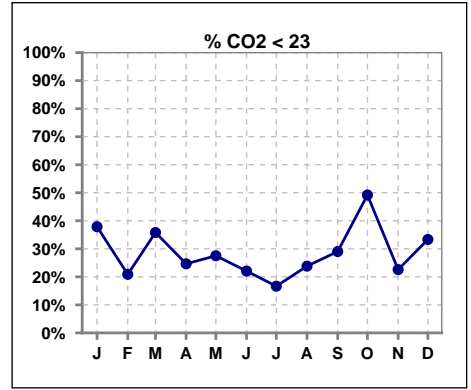
	Jan	Feb	Mar	Apr	May	Jun	Jul	Aug	Sep	Oct	Nov	Dec
# L processed/kg	66	68	67	69	70	68	66	64	62	64	62	63
# L processed/kg>0.8	59	60	62	62	64	60	62	60	57	56	56	58
Pop. Mean	1	1	1	1	1	1	1	1	1	1	1	1
Std. Deviation	0.3	0.3	0.3	0.3	0.3	0.3	0.3	0.3	0.3	0.3	0.3	0.3
% L processed/kg>0.8	89%	88%	93%	90%	91%	88%	94%	94%	92%	88%	90%	92%



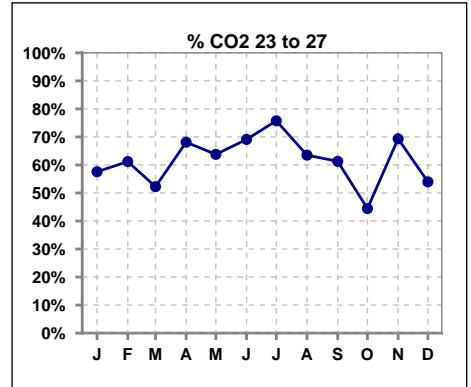
Methodology: a) All labs for 'Adequacy of Dialysis', 'Nutrition', 'Osteodystrophy', 'Anemia' and 'Diabetes' based on last value of month; b) BP's and #L processed are average of all values for month; c) Access data takes last access of month; d) Values for SGA and 'Infection Control' use most recent result.

I. ADEQUACY OF DIALYSIS - CONT.

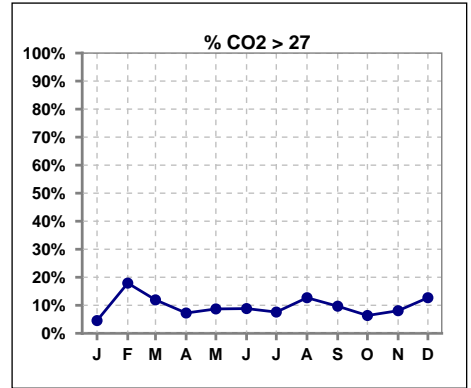
	Jan	Feb	Mar	Apr	May	Jun	Jul	Aug	Sep	Oct	Nov	Dec
# CO2	66	67	67	69	69	68	66	63	62	63	62	63
# CO2 < 23	25	14	24	17	19	15	11	15	18	31	14	21
Pop. Mean	23	25	24	24	24	24	25	24	24	23	24	24
Std. Deviation	2.76	2.68	3.14	2.68	2.45	2.67	2.56	2.68	2.75	3.08	2.37	3.05
% CO2 < 23	38%	21%	36%	25%	28%	22%	17%	24%	29%	49%	23%	33%



	Jan	Feb	Mar	Apr	May	Jun	Jul	Aug	Sep	Oct	Nov	Dec
# CO2	66	67	67	69	69	68	66	63	62	63	62	63
# CO2 23 to 27	38	41	35	47	44	47	50	40	38	28	43	34
Pop. Mean	23	25	24	24	24	24	25	24	24	23	24	24
Std. Deviation	2.76	2.68	3.14	2.68	2.45	2.67	2.56	2.68	2.75	3.08	2.37	3.05
% CO2 23 to 27	58%	61%	52%	68%	64%	69%	76%	63%	61%	44%	69%	54%



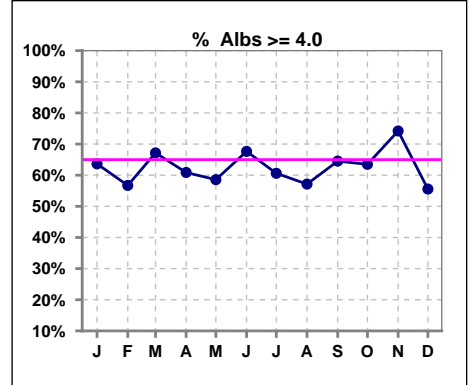
	Jan	Feb	Mar	Apr	May	Jun	Jul	Aug	Sep	Oct	Nov	Dec
# CO2	66	67	67	69	69	68	66	63	62	63	62	63
# CO2 > 27	3	12	8	5	6	6	5	8	6	4	5	8
Pop. Mean	23	25	24	24	24	24	25	24	24	23	24	24
Std. Deviation	2.76	2.68	3.14	2.68	2.45	2.67	2.56	2.68	2.75	3.08	2.37	3.05
% CO2 > 27	5%	18%	12%	7%	9%	9%	8%	13%	10%	6%	8%	13%



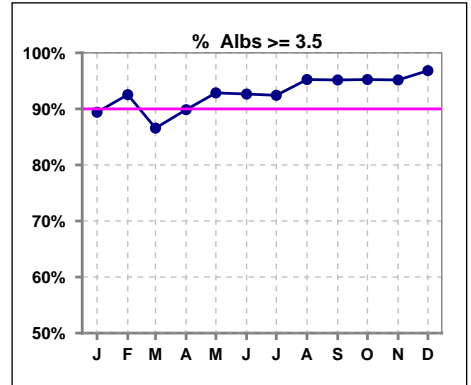
*Albumin values use BCG method - as of July 2001

II. NUTRITION

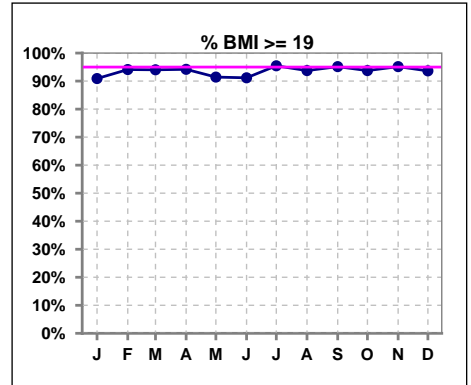
	Jan	Feb	Mar	Apr	May	Jun	Jul	Aug	Sep	Oct	Nov	Dec
# Albumin	66	67	67	69	70	68	66	63	62	63	62	63
# Albumin >= 4.0	42	38	45	42	41	46	40	36	40	40	46	35
Pop. Mean	4.0	4.0	4.0	4.0	4.0	4.0	4.0	4.0	4.0	4.0	4.1	4.0
Std. Deviation	0.37	0.33	0.41	0.36	0.32	0.38	0.37	0.32	0.30	0.32	0.37	0.30
% Alb >= 4.0	64%	57%	67%	61%	59%	68%	61%	57%	65%	63%	74%	56%



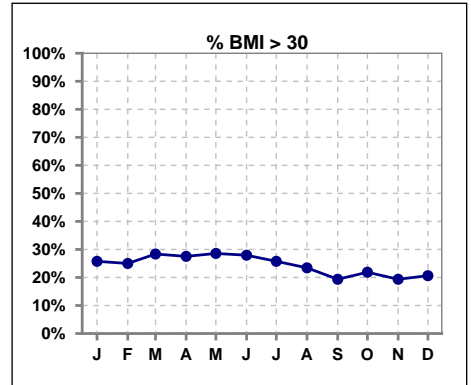
	Jan	Feb	Mar	Apr	May	Jun	Jul	Aug	Sep	Oct	Nov	Dec
# Albumin	66	67	67	69	70	68	66	63	62	63	62	63
# Albumin >= 3.5	59	62	58	62	65	63	61	60	59	60	59	61
Pop. Mean	4.0	4.0	4.0	4.0	4.0	4.0	4.0	4.0	4.0	4.0	4.1	4.0
Std. Deviation	0.37	0.33	0.41	0.36	0.32	0.38	0.37	0.32	0.30	0.32	0.37	0.30
% Alb >= 3.5	89%	93%	87%	90%	93%	93%	92%	95%	95%	95%	95%	97%



	Jan	Feb	Mar	Apr	May	Jun	Jul	Aug	Sep	Oct	Nov	Dec
# BMI	66	68	67	69	70	68	66	64	62	64	62	63
# BMI >= 19	60	64	63	65	64	62	63	60	59	60	59	59
Pop. Mean	26	26	27	27	26	26	26	26	26	26	26	26
Std. Deviation	5.9	5.8	6.4	6.4	6.3	6.2	5.4	5.3	5.1	5.7	5.4	5.7
% BMI >= 19	91%	94%	94%	94%	91%	91%	95%	94%	95%	94%	95%	94%



	Jan	Feb	Mar	Apr	May	Jun	Jul	Aug	Sep	Oct	Nov	Dec
# BMI	66	68	67	69	70	68	66	64	62	64	62	63
# BMI > 30	17	17	19	19	20	19	17	15	12	14	12	13
Pop. Mean	26	26	27	27	26	26	26	26	26	26	26	26
Std. Deviation	5.9	5.8	6.4	6.4	6.3	6.2	5.4	5.3	5.1	5.7	5.4	5.7
% BMI > 30	26%	25%	28%	28%	29%	28%	26%	23%	19%	22%	19%	21%

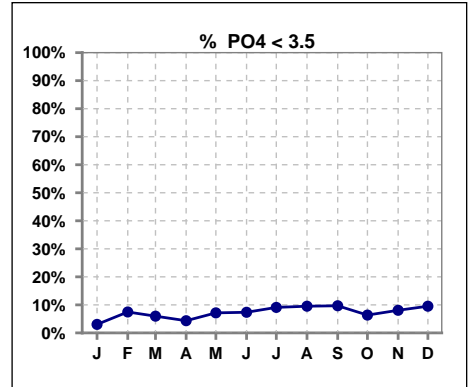


Methodology: a) All labs for 'Adequacy of Dialysis', 'Nutrition', 'Osteodystrophy', 'Anemia' and 'Diabetes' based on last value of month; b) BP's and #L processed are average of all values for month; c) Access data takes last access of month; d) Values for SGA and 'Infection Control' use most recent result.

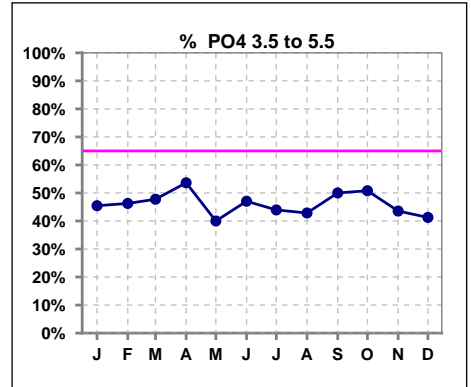
Lab methodology for PTH changed January 2012

III. OSTEODYSTROPHY

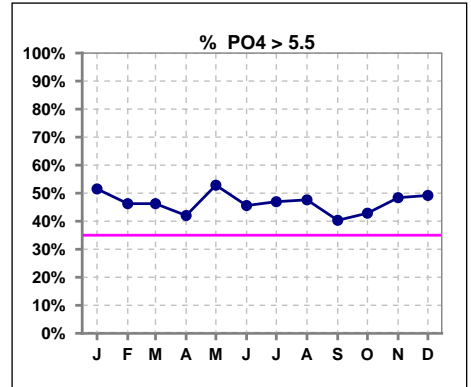
	Jan	Feb	Mar	Apr	May	Jun	Jul	Aug	Sep	Oct	Nov	Dec
# PO4	66	67	67	69	70	68	66	63	62	63	62	63
# PO4 < 3.5	2	5	4	3	5	5	6	6	6	4	5	6
Pop. Mean	5.9	5.8	5.6	5.7	5.7	5.8	5.4	5.7	5.6	5.5	5.8	5.8
Std. Deviation	1.55	1.90	1.56	1.82	1.88	1.95	1.83	1.88	1.79	1.52	1.82	1.88
% PO4 < 3.5	3%	7%	6%	4%	7%	7%	9%	10%	10%	6%	8%	10%



	Jan	Feb	Mar	Apr	May	Jun	Jul	Aug	Sep	Oct	Nov	Dec
# PO4	66	67	67	69	70	68	66	63	62	63	62	63
# PO4 3.5 to 5.5	30	31	32	37	28	32	29	27	31	32	27	26
Pop. Mean	5.9	5.8	5.6	5.7	5.7	5.8	5.4	5.7	5.6	5.5	5.8	5.8
Std. Deviation	1.55	1.90	1.56	1.82	1.88	1.95	1.83	1.88	1.79	1.52	1.82	1.88
% PO4 3.5 to 5.5	45%	46%	48%	54%	40%	47%	44%	43%	50%	51%	44%	41%



	Jan	Feb	Mar	Apr	May	Jun	Jul	Aug	Sep	Oct	Nov	Dec
# PO4	66	67	67	69	70	68	66	63	62	63	62	63
# PO4 > 5.5	34	31	31	29	37	31	31	30	25	27	30	31
Pop. Mean	5.9	5.8	5.6	5.7	5.7	5.8	5.4	5.7	5.6	5.5	5.8	5.8
Std. Deviation	1.55	1.90	1.56	1.82	1.88	1.95	1.83	1.88	1.79	1.52	1.82	1.88
% PO4 > 5.5	52%	46%	46%	42%	53%	46%	47%	48%	40%	43%	48%	49%

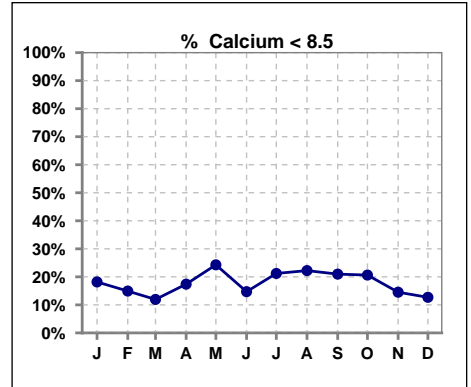


Methodology: a) All labs for 'Adequacy of Dialysis', 'Nutrition', 'Osteodystrophy', 'Anemia' and 'Diabetes' based on last value of month; b) BP's and #L processed are average of all values for month; c) Access data takes last access of month; d) Values for SGA and 'Infection Control' use most recent result.

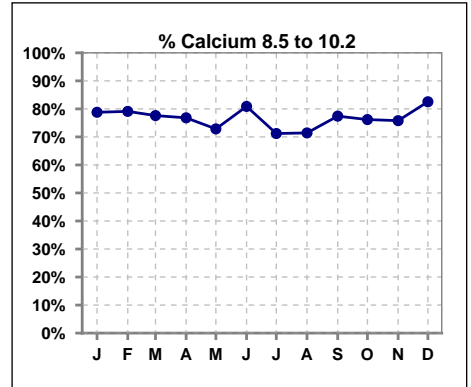
Lab methodology for PTH changed January 2012

III. OSTEODYSTROPHY - CONT.

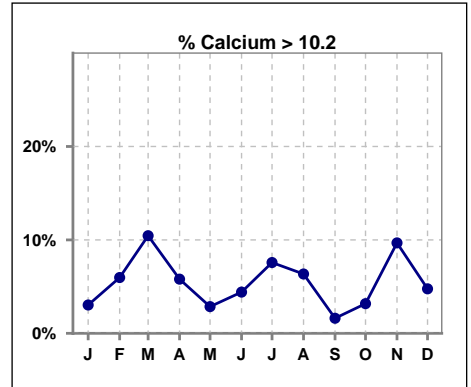
	Jan	Feb	Mar	Apr	May	Jun	Jul	Aug	Sep	Oct	Nov	Dec
# Calcium	66	67	67	69	70	68	66	63	62	63	62	63
# Calcium < 8.5	12	10	8	12	17	10	14	14	13	13	9	8
Pop. Mean	9.1	9.3	9.3	9.3	9.1	9.2	9.2	9.1	9.0	9.1	9.2	9.1
Std. Deviation	0.67	0.66	0.77	0.74	0.80	0.74	0.82	0.80	0.76	0.74	0.78	0.71
% Calcium < 8.5	18%	15%	12%	17%	24%	15%	21%	22%	21%	21%	15%	13%



	Jan	Feb	Mar	Apr	May	Jun	Jul	Aug	Sep	Oct	Nov	Dec
# Calcium	66	67	67	69	70	68	66	63	62	63	62	63
# Calcium 8.5 to 10.2	52	53	52	53	51	55	47	45	48	48	47	52
Pop. Mean	9.1	9.3	9.3	9.3	9.1	9.2	9.2	9.1	9.0	9.1	9.2	9.1
Std. Deviation	0.67	0.66	0.77	0.74	0.80	0.74	0.82	0.80	0.76	0.74	0.78	0.71
% Calcium 8.5 to 10.2	79%	79%	78%	77%	73%	81%	71%	71%	77%	76%	76%	83%



	Jan	Feb	Mar	Apr	May	Jun	Jul	Aug	Sep	Oct	Nov	Dec
# Calcium	66	67	67	69	70	68	66	63	62	63	62	63
# Calcium > 10.2	2	4	7	4	2	3	5	4	1	2	6	3
Pop. Mean	9.1	9.3	9.3	9.3	9.1	9.2	9.2	9.1	9.0	9.1	9.2	9.1
Std. Deviation	0.67	0.66	0.77	0.74	0.80	0.74	0.82	0.80	0.76	0.74	0.78	0.71
% Calcium > 10.2	3%	6%	10%	6%	3%	4%	8%	6%	2%	3%	10%	5%

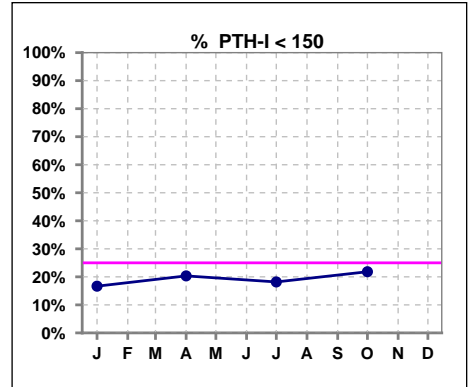


Methodology: a) All labs for 'Adequacy of Dialysis', 'Nutrition', 'Osteodystrophy', 'Anemia' and 'Diabetes' based on last value of month; b) BP's and #L processed are average of all values for month; c) Access data takes last access of month; d) Values for SGA and 'Infection Control' use most recent result.

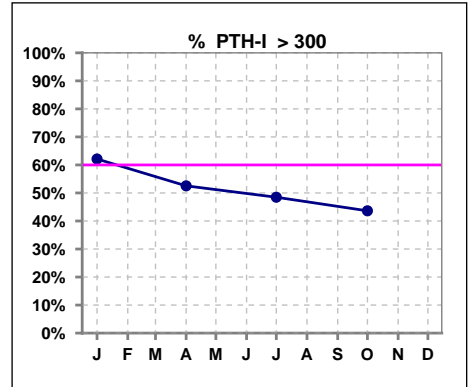
Lab methodology for PTH changed January 2012

III. OSTEODYSTROPHY - CONT.

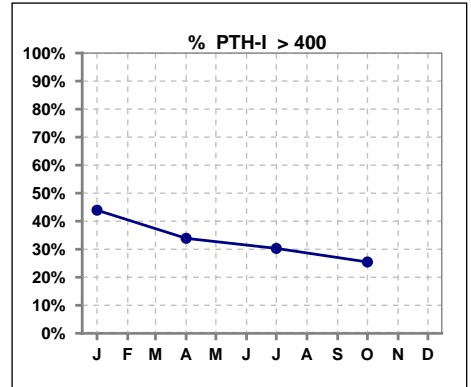
	Jan	Feb	Mar	Apr	May	Jun	Jul	Aug	Sep	Oct	Nov	Dec
# PTH-I	66			59			66			55		
# PTH-I < 150	11			12			12			12		
Pop. Mean	405			401			346			338		
Std. Deviation	412			384			264			280		
% PTH-I < 150	17%			20%			18%			22%		



	Jan	Feb	Mar	Apr	May	Jun	Jul	Aug	Sep	Oct	Nov	Dec
# PTH-I	66			59			66			55		
# PTH-I > 300	41			31			32			24		
Pop. Mean	405			401			346			338		
Std. Deviation	412			384			264			280		
% PTH-I > 300	62%			53%			48%			44%		



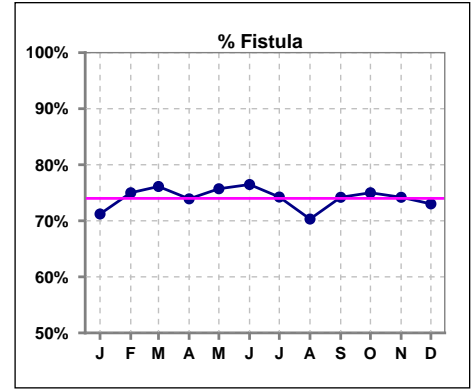
	Jan	Feb	Mar	Apr	May	Jun	Jul	Aug	Sep	Oct	Nov	Dec
# PTH-I	66			59			66			55		
# PTH-I > 400	29			20			20			14		
Pop. Mean	405			401			346			338		
Std. Deviation	412			384			264			280		
% PTH-I > 400	44%			34%			30%			25%		



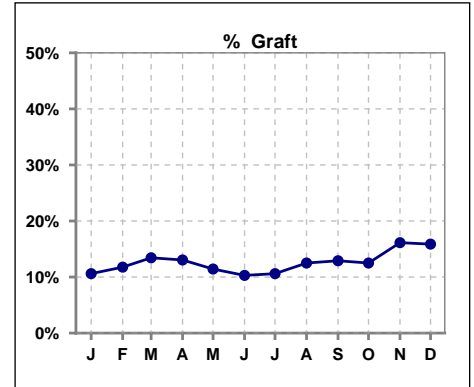
Methodology: a) All labs for 'Adequacy of Dialysis', 'Nutrition', 'Osteodystrophy', 'Anemia' and 'Diabetes' based on last value of month; b) BP's and #L processed are average of all values for month; c) Access data takes last access of month; d) Values for SGA and 'Infection Control' use most recent result.

IV. ACCESS

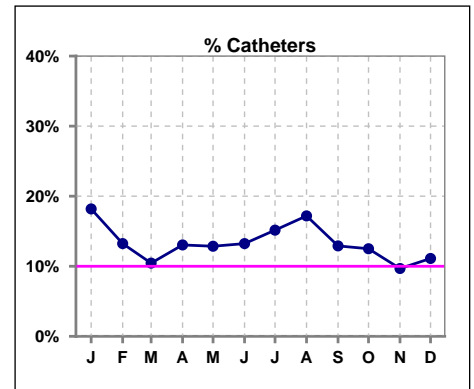
	Jan	Feb	Mar	Apr	May	Jun	Jul	Aug	Sep	Oct	Nov	Dec
# Access	66	68	67	69	70	68	66	64	61	64	62	63
# Fistula	47	51	51	51	53	52	49	45	46	48	46	46
% Fistula	71%	75%	76%	74%	76%	76%	74%	70%	74%	75%	74%	73%



	Jan	Feb	Mar	Apr	May	Jun	Jul	Aug	Sep	Oct	Nov	Dec
# Access	66	68	67	69	70	68	66	64	61	64	62	63
# Graft	7	8	9	9	8	7	7	8	8	8	10	10
% Graft	11%	12%	13%	13%	11%	10%	11%	13%	13%	13%	16%	16%



	Jan	Feb	Mar	Apr	May	Jun	Jul	Aug	Sep	Oct	Nov	Dec
# Access	66	68	67	69	70	68	66	64	61	64	62	63
# Catheters	12	9	7	9	9	9	10	11	8	8	6	7
% Catheters	18%	13%	10%	13%	13%	13%	15%	17%	13%	13%	10%	11%



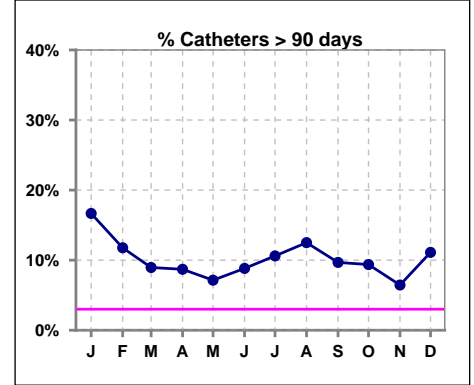
Methodology: a) All labs for 'Adequacy of Dialysis', 'Nutrition', 'Osteodystrophy', 'Anemia' and 'Diabetes' based on last value of month; b) BP's and #L processed are average of all values for month; c) Access data takes last access of month; d) Values for SGA and 'Infection Control' use most recent result.

IV. ACCESS - CONT.

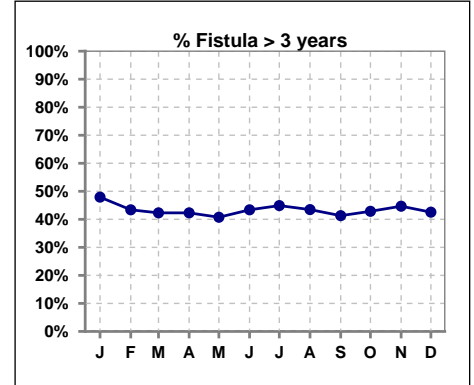
Catheters > 90 days

	Jan	Feb	Mar	Apr	May	Jun	Jul	Aug	Sep	Oct	Nov	Dec
# Access	66	68	67	69	70	68	66	64	62	64	62	63
# Catheters	11	8	6	6	5	6	7	8	6	6	4	7
% Catheters	17%	12%	9%	9%	7%	9%	11%	13%	10%	9%	6%	11%

Definition: Catheter in use on last treatment of the month



	Jan	Feb	Mar	Apr	May	Jun	Jul	Aug	Sep	Oct	Nov	Dec
# Fistula	48	53	52	52	54	53	49	46	46	49	47	47
# Fistula > 3 yrs	23	23	22	22	22	23	22	20	19	21	21	20
% Fistula > 3 yrs	48%	43%	42%	42%	41%	43%	45%	43%	41%	43%	45%	43%



Methodology: a) All labs for 'Adequacy of Dialysis', 'Nutrition', 'Osteodystrophy', 'Anemia' and 'Diabetes' based on last value of month; b) BP's and #L processed are average of all values for month; c) Access data takes last access of month; d) Values for SGA and 'Infection Control' use most recent result.

All rates are calculated per 100 patient-month

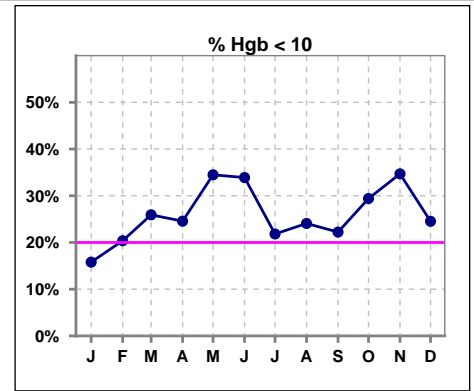
(number of infections/number of accesses x100)

LCKC	Total Fistula	Fistula Infected	Fistula ARB Rate	National Rate	Total Grafts	Graft Infected	Graft ARB Rate	National Rate	Total Cath	Cath Infected	Cath ARB Rate	National Rate	Total Accesses	Total Access Infected	All ARB Rate Per 100 pt- Months	National Rate
2013-2014 Month																
Dec	49	0	0	0.23	7	0	0	0.51	13	0	0	2.55	69	0	0	
Jan	46	0	0	0.23	7	0	0	0.51	14	1	7.1429	2.55	67	1	1.493	
Feb	51	2	3.9216	0.23	8	0	0	0.51	9	0	0	2.55	68	2	2.941	
Mar	49	0	0	0.23	9	0	0	0.51	8	0	0	2.55	66	0	0.000	
April	50	0	0	0.23	9	0	0	0.51	9	0	0	2.55	68	0	0.000	
May	52	0	0	0.23	8	0	0	0.51	10	0	0	2.55	70	0	0.000	
June	54	0	0	0.23	8	0	0	0.51	8	0	0	2.55	70	0	0.000	
July	51	0	0	0.23	8	0	0	0.51	8	0	0	2.55	67	0	0.000	
Aug	45	0	0	0.23	8	0	0	0.51	10	0	0	2.55	63	0	0.000	
Sept	47	0	0	0.23	9	0	0	0.51	7	0	0	2.55	65	0	0.000	
Oct	45	0	0	0.23	8	0	0	0.51	7	0	0	2.55	61	0	0.000	
Nov	48	0	0	0.23	8	0	0	0.51	7	0	0	2.55	63	0	0.000	
Annual Total:	587	2	0.3407		97	0	0		110	1	0.9091		734	3	0.409	0.88

V. ANEMIA

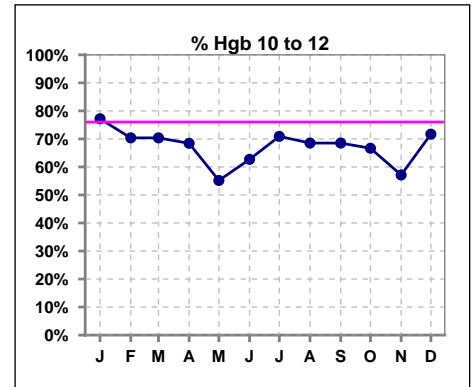
	Jan	Feb	Mar	Apr	May	Jun	Jul	Aug	Sep	Oct	Nov	Dec
# Hgb	57	54	54	57	58	59	55	54	54	51	49	53
# Hgb < 10	9	11	14	14	20	20	12	13	12	15	17	13
Pop. Mean	10.7	10.5	10.4	10.4	10.5	10.3	10.6	10.7	10.7	10.4	10.4	10.5
Std. Deviation	1.0	1.0	1.1	1.0	1.3	1.2	1.3	1.1	1.2	1.1	1.1	1.1
% Hgb < 10	16%	20%	26%	25%	34%	34%	22%	24%	22%	29%	35%	25%

Note: Excludes patients who received no ESA in month.



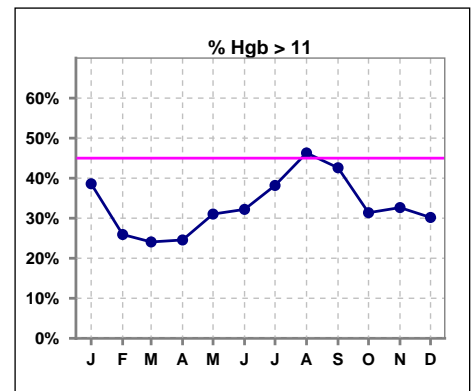
	Jan	Feb	Mar	Apr	May	Jun	Jul	Aug	Sep	Oct	Nov	Dec
# Hgb	57	54	54	57	58	59	55	54	54	51	49	53
# Hgb 10 to 12	44	38	38	39	32	37	39	37	37	34	28	38
Pop. Mean	10.7	10.5	10.4	10.4	10.5	10.3	10.6	10.7	10.7	10.4	10.4	10.5
Std. Deviation	1.0	1.0	1.1	1.0	1.3	1.2	1.3	1.1	1.2	1.1	1.1	1.1
% Hgb 10 to 12	77%	70%	70%	68%	55%	63%	71%	69%	69%	67%	57%	72%

Note: Excludes patients who received no ESA in month.



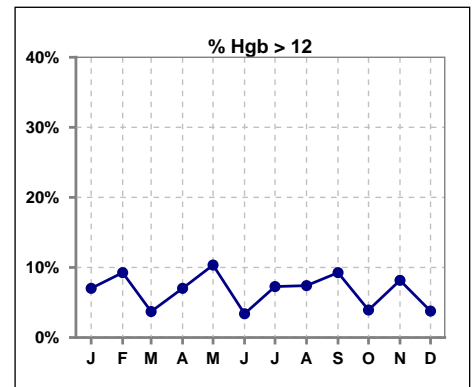
	Jan	Feb	Mar	Apr	May	Jun	Jul	Aug	Sep	Oct	Nov	Dec
# Hgb	57	54	54	57	58	59	55	54	54	51	49	53
# Hgb > 11	22	14	13	14	18	19	21	25	23	16	16	16
Pop. Mean	10.7	10.5	10.4	10.4	10.5	10.3	10.6	10.7	10.7	10.4	10.4	10.5
Std. Deviation	1.0	1.0	1.1	1.0	1.3	1.2	1.3	1.1	1.2	1.1	1.1	1.1
% Hgb > 11	39%	26%	24%	25%	31%	32%	38%	46%	43%	31%	33%	30%

Note: Excludes patients who received no ESA in month.



	Jan	Feb	Mar	Apr	May	Jun	Jul	Aug	Sep	Oct	Nov	Dec
# Hgb	57	54	54	57	58	59	55	54	54	51	49	53
# Hgb > 12	4	5	2	4	6	2	4	4	5	2	4	2
Pop. Mean	10.7	10.5	10.4	10.4	10.5	10.3	10.6	10.7	10.7	10.4	10.4	10.5
Std. Deviation	1.0	1.0	1.1	1.0	1.3	1.2	1.3	1.1	1.2	1.1	1.1	1.1
% Hgb > 12	7%	9%	4%	7%	10%	3%	7%	7%	9%	4%	8%	4%

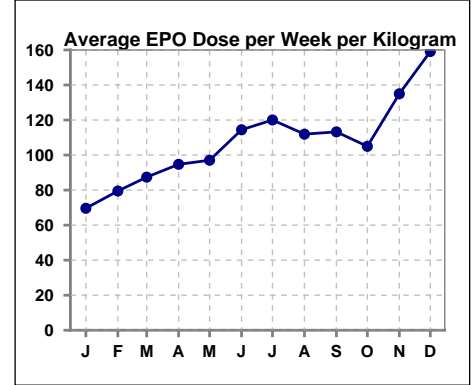
Note: Excludes patients who received no ESA in month.



V. ANEMIA - CONT.

Average EPO Dose per Week per Kilogram

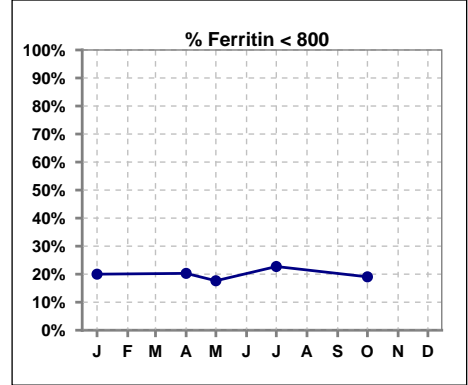
	Jan	Feb	Mar	Apr	May	Jun	Jul	Aug	Sep	Oct	Nov	Dec
# Average EPO	69.6	79.5	87.4	94.7	97.0	114.4	120.0	112.0	113.2	105.0	135.0	159.1



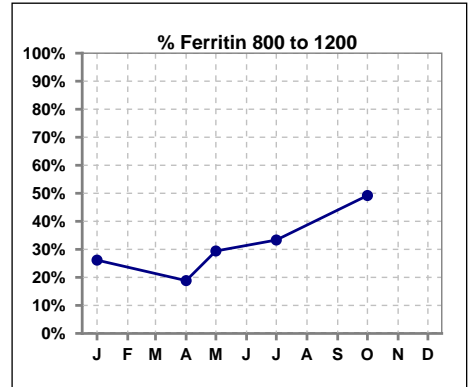
V. ANEMIA - CONT.

Iron Profile

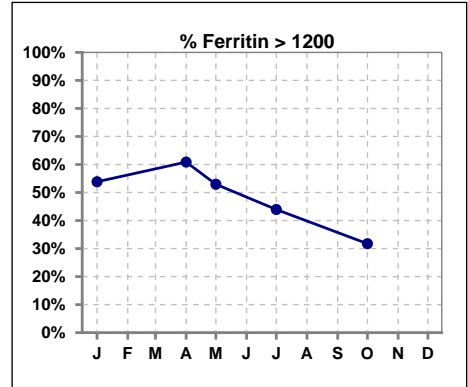
	Jan	Feb	Mar	Apr	May	Jun	Jul	Aug	Sep	Oct	Nov	Dec
# Ferritin	65			69	17		66			63		
# Ferritin < 800	13			14	3		15			12		
Pop. Mean	1258			1186	1297		1120			1112		
Std. Deviation	458			492	515		431			394		
% Ferritin < 800	20%			20%	18%		23%			19%		



	Jan	Feb	Mar	Apr	May	Jun	Jul	Aug	Sep	Oct	Nov	Dec
# Ferritin	65			69	17		66			63		
# Ferritin 800 to 1200	17			13	5		22			31		
Pop. Mean	1258			1186	1297		1120			1112		
Std. Deviation	458			492	515		431			394		
% Ferritin 800 to 1200	26%			19%	29%		33%			49%		

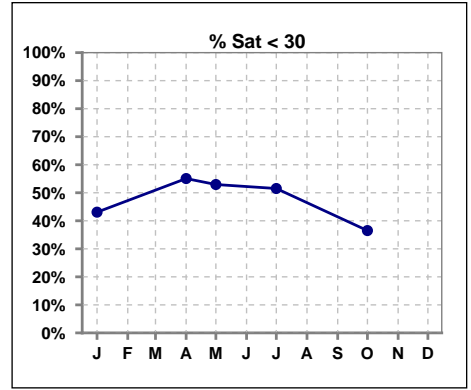


	Jan	Feb	Mar	Apr	May	Jun	Jul	Aug	Sep	Oct	Nov	Dec
# Ferritin	65			69	17		66			63		
# Ferritin > 1200	35			42	9		29			20		
Pop. Mean	1258			1186	1297		1120			1112		
Std. Deviation	458			492	515		431			394		
% Ferritin > 1200	54%			61%	53%		44%			32%		

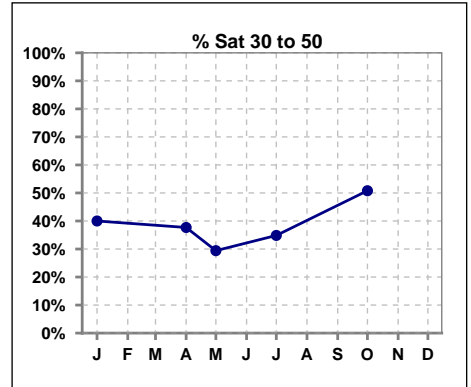


V. ANEMIA - CONT.

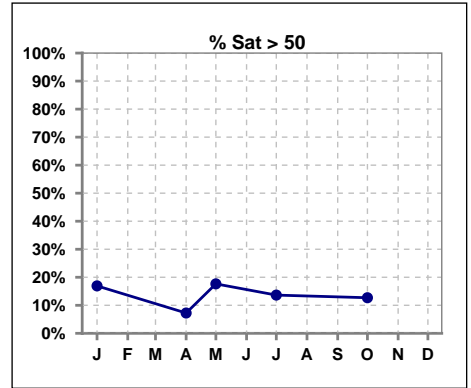
	Jan	Feb	Mar	Apr	May	Jun	Jul	Aug	Sep	Oct	Nov	Dec
# % Sat	65			69	17		66			63		
# % Sat < 30	28			38	9		34			23		
Pop. Mean	34			31	35		32			37		
Std. Deviation	14			15	21		17			18		
% % Sat < 30	43%			55%	53%		52%			37%		



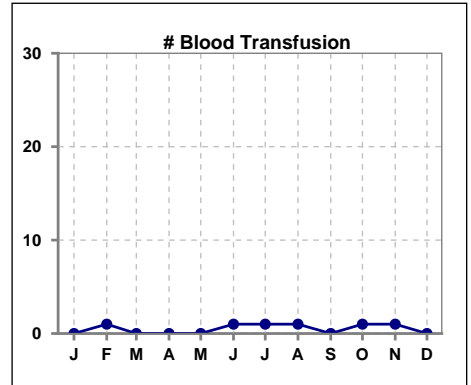
	Jan	Feb	Mar	Apr	May	Jun	Jul	Aug	Sep	Oct	Nov	Dec
# % Sat	65			69	17		66			63		
# % Sat 30 to 50	26			26	5		23			32		
Pop. Mean	34			31	35		32			37		
Std. Deviation	14			15	21		17			18		
% % Sat 30 to 50	40%			38%	29%		35%			51%		



	Jan	Feb	Mar	Apr	May	Jun	Jul	Aug	Sep	Oct	Nov	Dec
# % Sat	65			69	17		66			63		
# % Sat > 50	11			5	3		9			8		
Pop. Mean	34			31	35		32			37		
Std. Deviation	14			15	21		17			18		
% % Sat > 50	17%			7%	18%		14%			13%		



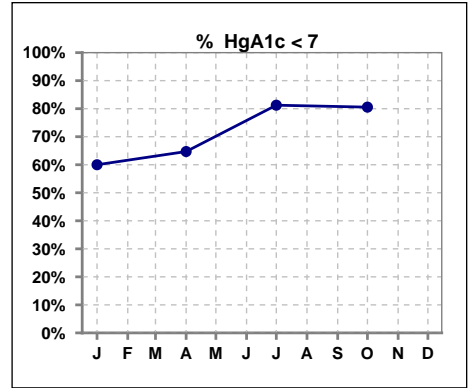
	Jan	Feb	Mar	Apr	May	Jun	Jul	Aug	Sep	Oct	Nov	Dec
# Patient	67	68	67	69	70	68	66	64	62	65	63	63
# Blood Transfusion	0	1	0	0	0	1	1	1	0	1	1	0



Methodology: a) All labs for 'Adequacy of Dialysis', 'Nutrition', 'Osteodystrophy', 'Anemia' and 'Diabetes' based on last value of month; b) BP's and #L processed are average of all values for month; c) Access data takes last access of month; d) Values for SGA and 'Infection Control' use most recent result.

VI. Diabetes

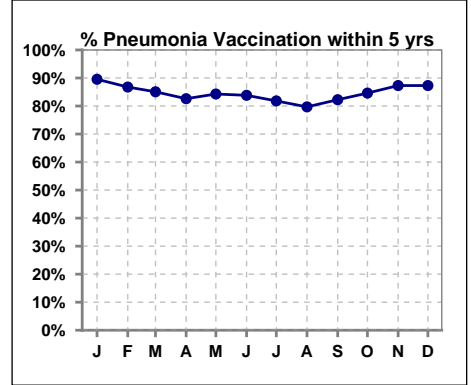
	Jan	Feb	Mar	Apr	May	Jun	Jul	Aug	Sep	Oct	Nov	Dec
# HgA1c	30			34			32			36		
# HgA1c < 7	18			22			26			29		
Pop. Mean	6.6			6.7			6.3			6.1		
Std. Deviation	1.19			1.14			0.90			1.11		
% HgA1c < 7	60%			65%			81%			81%		



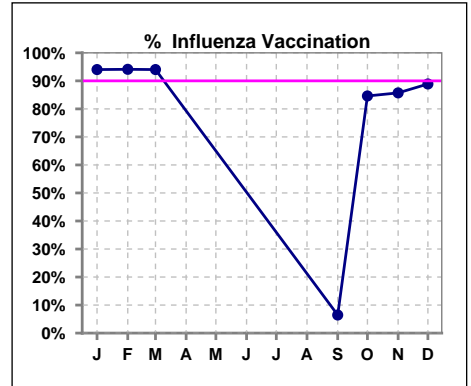
VII. Infection Control

Pneumonia vaccination within the past five years

	Jan	Feb	Mar	Apr	May	Jun	Jul	Aug	Sep	Oct	Nov	Dec
# Patient	67	68	67	69	70	68	66	64	62	65	63	63
# Pneumonia	60	59	57	57	59	57	54	51	51	55	55	55
% Pneumonia	90%	87%	85%	83%	84%	84%	82%	80%	82%	85%	87%	87%



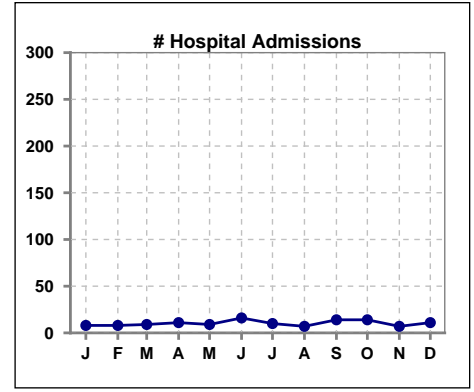
	Jan	Feb	Mar	Apr	May	Jun	Jul	Aug	Sep	Oct	Nov	Dec
# Patient	67	68	67						62	65	63	63
# Influenza	63	64	63						4	55	54	56
% Influenza	94%	94%	94%						6%	85%	86%	89%



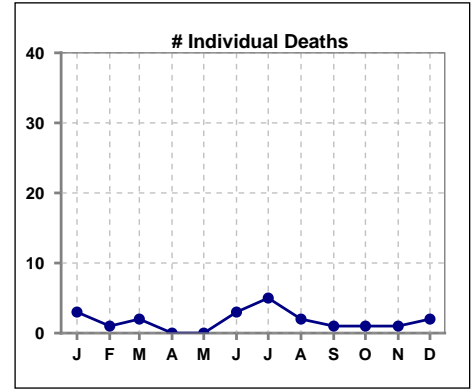
Methodology: a) All labs for 'Adequacy of Dialysis', 'Nutrition', 'Osteodystrophy', 'Anemia' and 'Diabetes' based on last value of month; b) BP's and #L processed are average of all values for month; c) Access data takes last access of month; d) Values for SGA and 'Infection Control' use most recent result.

VIII. Misc

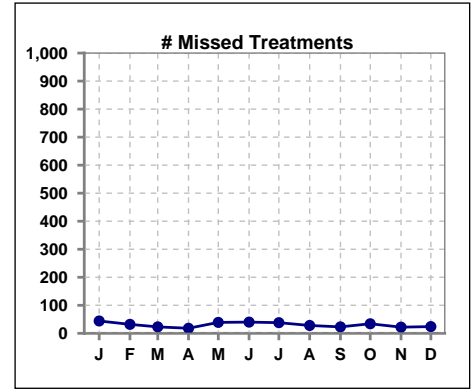
	Jan	Feb	Mar	Apr	May	Jun	Jul	Aug	Sep	Oct	Nov	Dec
# Patient	67	68	67	69	70	68	66	64	62	65	63	63
# Hospital Admissions	8	8	9	11	9	16	10	7	14	14	7	11



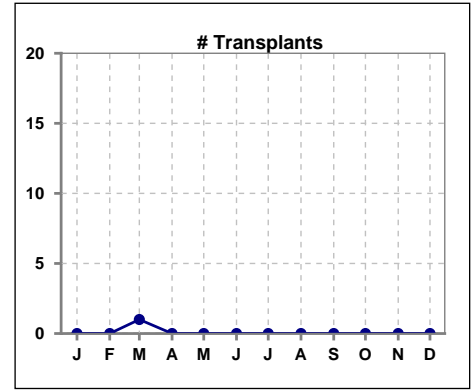
	Jan	Feb	Mar	Apr	May	Jun	Jul	Aug	Sep	Oct	Nov	Dec
# Patient	67	68	67	69	70	68	66	64	62	65	63	63
# Individual Deaths	3	1	2	0	0	3	5	2	1	1	1	2



	Jan	Feb	Mar	Apr	May	Jun	Jul	Aug	Sep	Oct	Nov	Dec
# Patient	67	68	67	69	70	68	66	64	62	65	63	63
# Missed Treatments	44	32	23	18	39	40	38	28	23	34	22	24



	Jan	Feb	Mar	Apr	May	Jun	Jul	Aug	Sep	Oct	Nov	Dec
# Patient	67	68	67	69	70	68	66	64	62	65	63	63
# Transplants	0	0	1	0	0	0	0	0	0	0	0	0



Methodology: a) All labs for 'Adequacy of Dialysis', 'Nutrition', 'Osteodystrophy', 'Anemia' and 'Diabetes' based on last value of month; b) BP's and #L processed are average of all values for month; c) Access data takes last access of month; d) Values for SGA and 'Infection Control' use most recent result.