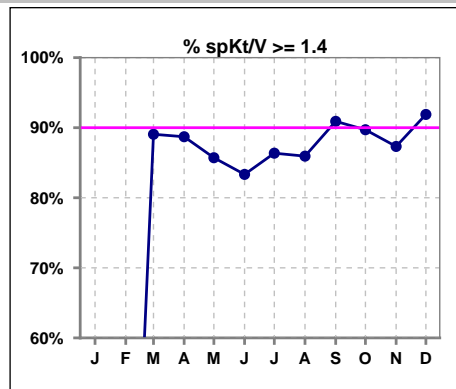
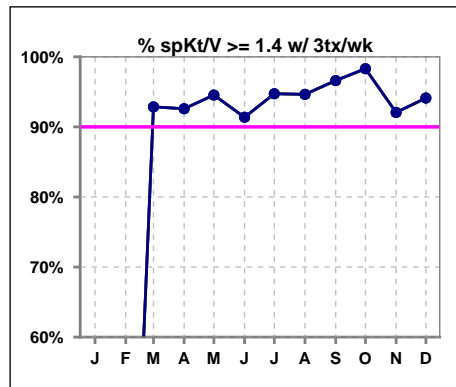


I. ADEQUACY OF DIALYSIS

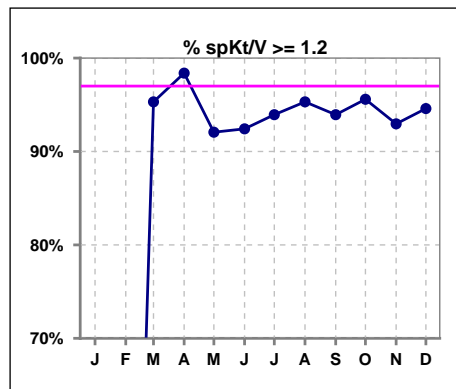
	Jan	Feb	Mar	Apr	May	Jun	Jul	Aug	Sep	Oct	Nov	Dec
# spKt/V	0	0	64	62	63	66	66	64	66	68	71	74
# spKt/V >= 1.4	0	0	57	55	54	55	57	55	60	61	62	68
Pop. Mean	0	0	1.71	1.72	1.67	1.62	1.68	1.67	1.72	1.72	1.70	1.74
Std. Deviation	0	0	0.34	0.29	0.34	0.32	0.30	0.30	0.30	0.30	0.33	0.32
% spKt/V >= 1.4	0%	0%	89%	89%	86%	83%	86%	86%	91%	90%	87%	92%



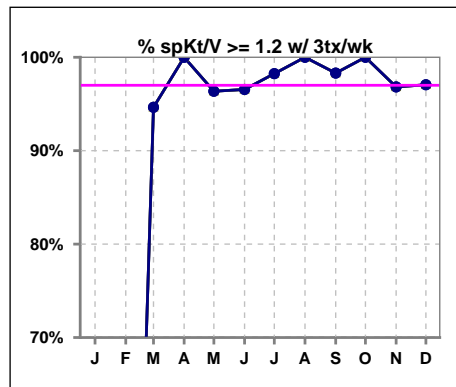
	Jan	Feb	Mar	Apr	May	Jun	Jul	Aug	Sep	Oct	Nov	Dec
# spKt/V w/ 3tx/wk	0	0	56	54	55	58	57	56	59	59	63	68
# spKt/V >= 1.4 w/3tx/wk	0	0	52	50	52	53	54	53	57	58	58	64
Pop. Mean	0	0	1.71	1.74	1.71	1.65	1.72	1.72	1.75	1.78	1.75	1.76
Std. Deviation	0	0	0.28	0.25	0.28	0.27	0.25	0.24	0.25	0.24	0.29	0.30
% >= 1.4 w/3tx/wk	0%	0%	93%	93%	95%	91%	95%	95%	97%	98%	92%	94%



	Jan	Feb	Mar	Apr	May	Jun	Jul	Aug	Sep	Oct	Nov	Dec
# spKt/V	0	0	64	62	63	66	66	64	66	68	71	74
# spKt/V >= 1.2	0	0	61	61	58	61	62	61	62	65	66	70
Pop. Mean	0	0	1.71	1.72	1.67	1.62	1.68	1.67	1.72	1.72	1.70	1.74
Std. Deviation	0	0	0.34	0.29	0.34	0.32	0.30	0.30	0.30	0.30	0.33	0.32
% spKt/V >= 1.2	0%	0%	95%	98%	92%	92%	94%	95%	94%	96%	93%	95%



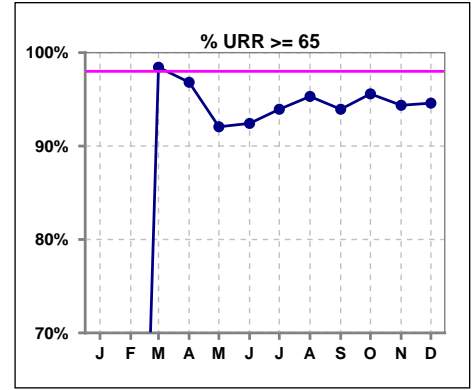
	Jan	Feb	Mar	Apr	May	Jun	Jul	Aug	Sep	Oct	Nov	Dec
# spKt/V w/ 3tx/wk	0	0	56	54	55	58	57	56	59	59	63	68
# spKt/V >= 1.2 w/3tx/wk	0	0	53	54	53	56	56	56	58	59	61	66
Pop. Mean	0	0	1.71	1.74	1.71	1.65	1.72	1.72	1.75	1.78	1.75	1.76
Std. Deviation	0	0	0.28	0.25	0.28	0.27	0.25	0.24	0.25	0.24	0.29	0.30
% >= 1.2 w/3tx/wk	0%	0%	95%	100%	96%	97%	98%	100%	98%	100%	97%	97%



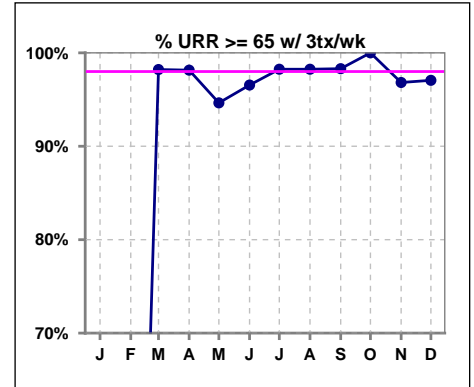
Methodology: a) All labs for 'Adequacy of Dialysis', 'Nutrition', 'Osteodystrophy', 'Anemia' and 'Diabetes' based on last value of month; b) BP's and #L processed are average of all values for month; c) Access data takes last access of month; d) Values for SGA and 'Infection Control' use most recent result.

I. ADEQUACY OF DIALYSIS - CONT.

	Jan	Feb	Mar	Apr	May	Jun	Jul	Aug	Sep	Oct	Nov	Dec
# URR	0	0	64	63	63	66	66	64	66	68	71	74
# URR >= 65	0	0	63	61	58	61	62	61	62	65	67	70
Pop. Mean	0	0	77	77	76	75	76	76	77	77	76	77
Std. Deviation	0	0	6.09	5.64	7.62	7.80	6.28	6.35	5.95	6.38	7.16	5.99
% URR >= 65	0%	0%	98%	97%	92%	92%	94%	95%	94%	96%	94%	95%



	Jan	Feb	Mar	Apr	May	Jun	Jul	Aug	Sep	Oct	Nov	Dec
# URR w/ 3tx/wk	0	0	56	54	56	58	57	57	59	59	63	68
# URR>=65 w/ 3tx/wk	0	0	55	53	53	56	56	56	58	59	61	66
Pop. Mean	0	0	77	78	77	76	77	77	78	78	77	78
Std. Deviation	0	0	5.57	4.59	6.30	6.70	4.67	5.06	4.58	4.40	5.85	5.50
% URR>=65 w/ 3tx/wk	0%	0%	98%	98%	95%	97%	98%	98%	98%	100%	97%	97%

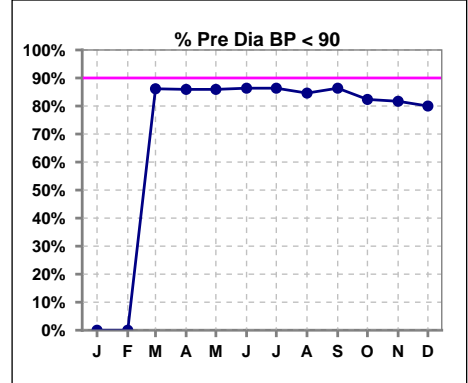


Methodology: a) All labs for 'Adequacy of Dialysis', 'Nutrition', 'Osteodystrophy', 'Anemia' and 'Diabetes' based on last value of month; b) BP's and #L processed are average of all values for month; c) Access data takes last access of month; d) Values for SGA and 'Infection Control' use most recent result.

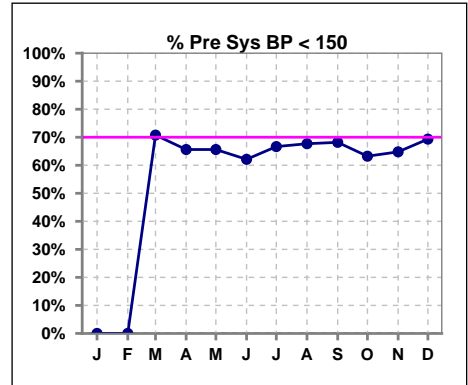
I. ADEQUACY OF DIALYSIS - CONT.

Blood Pressure Control (Pre)

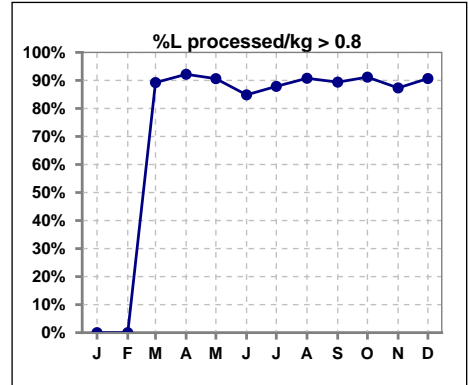
	Jan	Feb	Mar	Apr	May	Jun	Jul	Aug	Sep	Oct	Nov	Dec
# Pre Dia BP	0	0	65	64	64	66	66	65	66	68	71	75
# Pre Dia BP < 90	0	0	56	55	55	57	57	55	57	56	58	60
Pop. Mean	0	0	74	74	73	74	73	75	75	75	76	77
Std. Deviation	0	0	12.9	12.3	13.4	13.1	13.5	12.4	12.3	13.0	13.2	13.1
% Pre Dia BP < 90	0%	0%	86%	86%	86%	86%	86%	85%	86%	82%	82%	80%



	Jan	Feb	Mar	Apr	May	Jun	Jul	Aug	Sep	Oct	Nov	Dec
# Pre Sys BP	0	0	65	64	64	66	66	65	66	68	71	75
# Pre Sys BP < 150	0	0	46	42	42	41	44	44	45	43	46	52
Pop. Mean	0	0	142	142	141	142	141	143	143	144	141	141
Std. Deviation	0	0	17.7	18.8	18.9	20.4	19.9	19.1	18.7	18.4	19.8	19.1
%Pre Sys BP <150	0%	0%	71%	66%	66%	62%	67%	68%	68%	63%	65%	69%



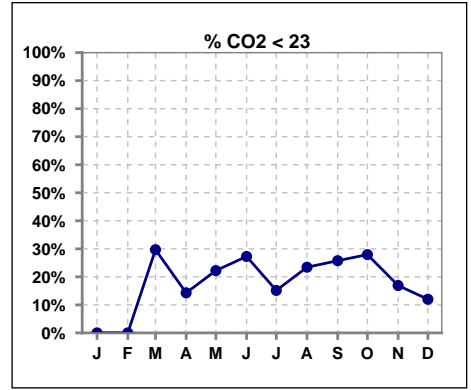
	Jan	Feb	Mar	Apr	May	Jun	Jul	Aug	Sep	Oct	Nov	Dec
# L processed/kg	0	0	65	64	64	66	66	65	66	68	71	75
# L processed/kg>0.8	0	0	58	59	58	56	58	59	59	62	62	68
Pop. Mean	0	0	1	1	1	1	1	1	1	1	1	1
Std. Deviation	0	0	0.3	0.3	0.3	0.3	0.3	0.3	0.3	0.3	0.3	0.3
% L processed/kg>0.8	0%	0%	89%	92%	91%	85%	88%	91%	89%	91%	87%	91%



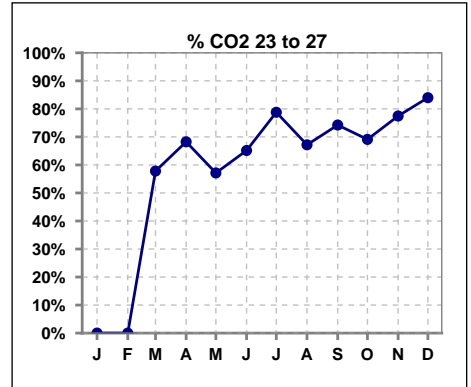
Methodology: a) All labs for 'Adequacy of Dialysis', 'Nutrition', 'Osteodystrophy', 'Anemia' and 'Diabetes' based on last value of month; b) BP's and #L processed are average of all values for month; c) Access data takes last access of month; d) Values for SGA and 'Infection Control' use most recent result.

I. ADEQUACY OF DIALYSIS - CONT.

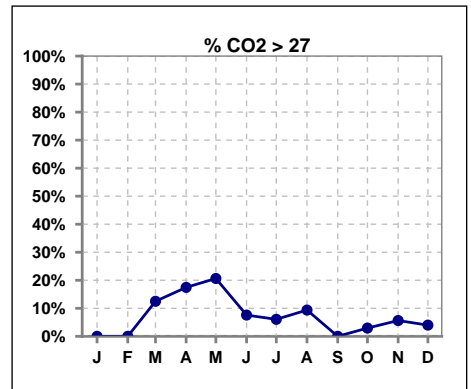
	Jan	Feb	Mar	Apr	May	Jun	Jul	Aug	Sep	Oct	Nov	Dec
# CO2	0	0	64	63	63	66	66	64	66	68	71	75
# CO2 < 23	0	0	19	9	14	18	10	15	17	19	12	9
Pop. Mean	0	0	24	25	25	24	25	25	24	24	24	25
Std. Deviation	0	0	2.66	2.57	2.56	2.71	2.06	2.35	1.74	2.13	1.92	1.96
% CO2 < 23	0%	0%	30%	14%	22%	27%	15%	23%	26%	28%	17%	12%



	Jan	Feb	Mar	Apr	May	Jun	Jul	Aug	Sep	Oct	Nov	Dec
# CO2	0	0	64	63	63	66	66	64	66	68	71	75
# CO2 23 to 27	0	0	37	43	36	43	52	43	49	47	55	63
Pop. Mean	0	0	24	25	25	24	25	25	24	24	24	25
Std. Deviation	0	0	2.66	2.57	2.56	2.71	2.06	2.35	1.74	2.13	1.92	1.96
% CO2 23 to 27	0%	0%	58%	68%	57%	65%	79%	67%	74%	69%	77%	84%



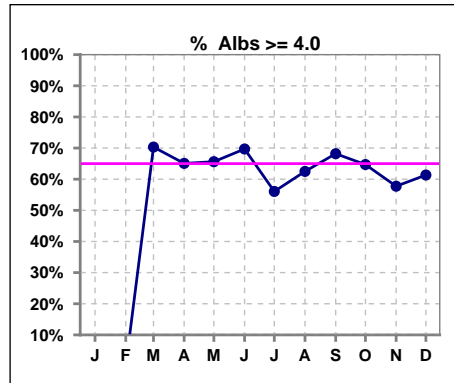
	Jan	Feb	Mar	Apr	May	Jun	Jul	Aug	Sep	Oct	Nov	Dec
# CO2	0	0	64	63	63	66	66	64	66	68	71	75
# CO2 > 27	0	0	8	11	13	5	4	6	0	2	4	3
Pop. Mean	0	0	24	25	25	24	25	25	24	24	24	25
Std. Deviation	0	0	2.66	2.57	2.56	2.71	2.06	2.35	1.74	2.13	1.92	1.96
% CO2 > 27	0%	0%	13%	17%	21%	8%	6%	9%	0%	3%	6%	4%



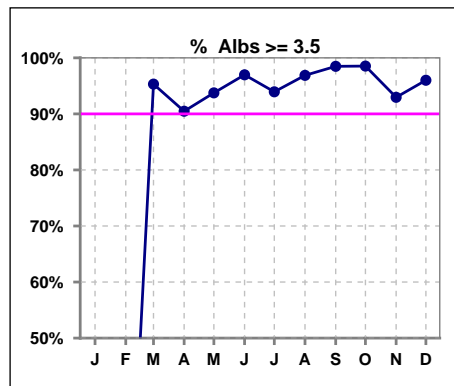
*Albumin values use BCG method - as of July 2001

II. NUTRITION

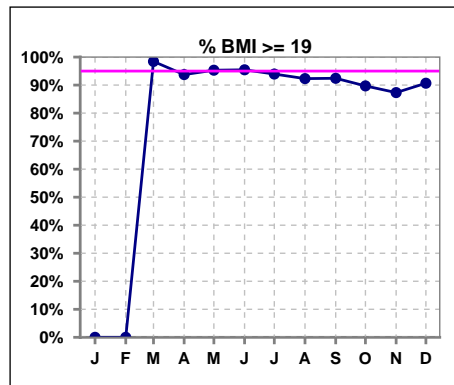
	Jan	Feb	Mar	Apr	May	Jun	Jul	Aug	Sep	Oct	Nov	Dec
# Albumin	0	0	64	63	64	66	66	64	66	68	71	75
# Albumin >= 4.0	0	0	45	41	42	46	37	40	45	44	41	46
Pop. Mean	0	0	4.1	4.0	4.0	4.1	4.0	4.1	4.1	4.1	4.0	4.0
Std. Deviation	0	0	0.38	0.37	0.33	0.33	0.34	0.36	0.33	0.31	0.35	0.35
% Alb >= 4.0	0%	0%	70%	65%	66%	70%	56%	63%	68%	65%	58%	61%



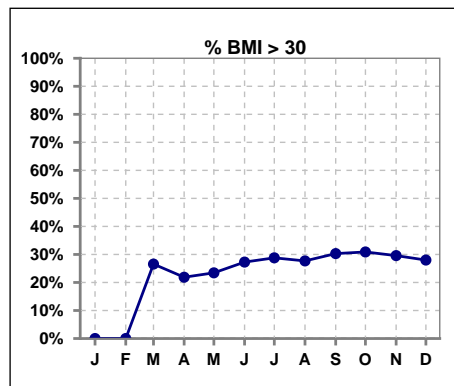
	Jan	Feb	Mar	Apr	May	Jun	Jul	Aug	Sep	Oct	Nov	Dec
# Albumin	0	0	64	63	64	66	66	64	66	68	71	75
# Albumin >= 3.5	0	0	61	57	60	64	62	62	65	67	66	72
Pop. Mean	0	0	4.1	4.0	4.0	4.1	4.0	4.1	4.1	4.1	4.0	4.0
Std. Deviation	0	0	0.38	0.37	0.33	0.33	0.34	0.36	0.33	0.31	0.35	0.35
% Alb >= 3.5	0%	0%	95%	90%	94%	97%	94%	97%	98%	99%	93%	96%



	Jan	Feb	Mar	Apr	May	Jun	Jul	Aug	Sep	Oct	Nov	Dec
# BMI	0	0	64	64	64	66	66	65	66	68	71	75
# BMI >= 19	0	0	63	60	61	63	62	60	61	61	62	68
Pop. Mean	0	0	27	27	27	27	27	27	27	27	27	27
Std. Deviation	0	0	7.1	6.8	6.9	6.7	6.8	7.0	7.2	7.1	7.3	7.0
% BMI >= 19	0%	0%	98%	94%	95%	95%	94%	92%	92%	90%	87%	91%



	Jan	Feb	Mar	Apr	May	Jun	Jul	Aug	Sep	Oct	Nov	Dec
# BMI	0	0	64	64	64	66	66	65	66	68	71	75
# BMI > 30	0	0	17	14	15	18	19	18	20	21	21	21
Pop. Mean	0	0	27	27	27	27	27	27	27	27	27	27
Std. Deviation	0	0	7.1	6.8	6.9	6.7	6.8	7.0	7.2	7.1	7.3	7.0
% BMI > 30	0%	0%	27%	22%	23%	27%	29%	28%	30%	31%	30%	28%

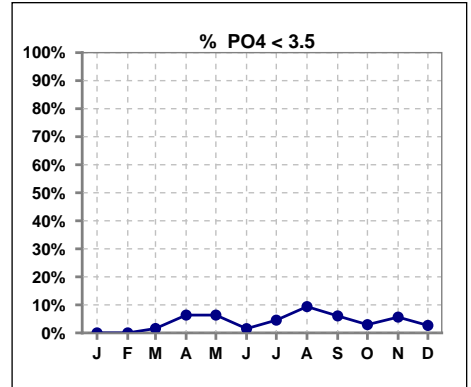


Methodology: a) All labs for 'Adequacy of Dialysis', 'Nutrition', 'Osteodystrophy', 'Anemia' and 'Diabetes' based on last value of month; b) BP's and #L processed are average of all values for month; c) Access data takes last access of month; d) Values for SGA and 'Infection Control' use most recent result.

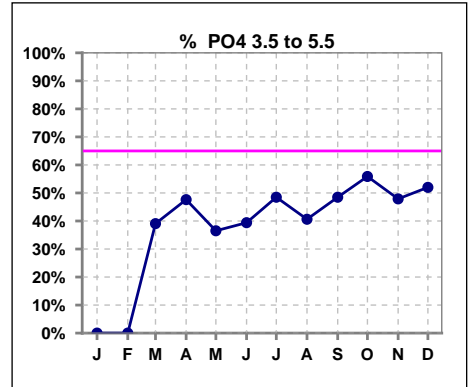
Lab methodology for PTH changed January 2012

III. OSTEODYSTROPHY

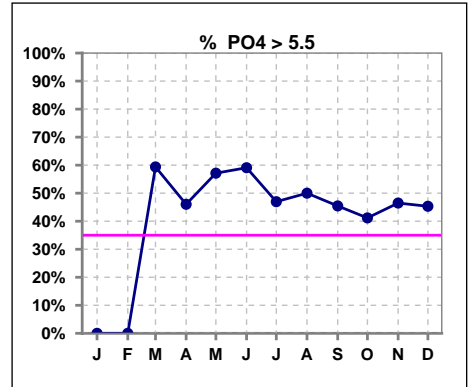
	Jan	Feb	Mar	Apr	May	Jun	Jul	Aug	Sep	Oct	Nov	Dec
# PO4	0	0	64	63	63	66	66	64	66	68	71	75
# PO4 < 3.5	0	0	1	4	4	1	3	6	4	2	4	2
Pop. Mean	0	0	6.2	5.7	5.7	6.0	5.5	5.7	5.8	5.5	5.7	5.5
Std. Deviation	0	0	1.50	1.60	1.37	1.57	1.44	1.64	1.70	1.56	1.74	1.26
% PO4 < 3.5	0%	0%	2%	6%	6%	2%	5%	9%	6%	3%	6%	3%



	Jan	Feb	Mar	Apr	May	Jun	Jul	Aug	Sep	Oct	Nov	Dec
# PO4	0	0	64	63	63	66	66	64	66	68	71	75
# PO4 3.5 to 5.5	0	0	25	30	23	26	32	26	32	38	34	39
Pop. Mean	0	0	6.2	5.7	5.7	6.0	5.5	5.7	5.8	5.5	5.7	5.5
Std. Deviation	0	0	1.50	1.60	1.37	1.57	1.44	1.64	1.70	1.56	1.74	1.26
% PO4 3.5 to 5.5	0%	0%	39%	48%	37%	39%	48%	41%	48%	56%	48%	52%



	Jan	Feb	Mar	Apr	May	Jun	Jul	Aug	Sep	Oct	Nov	Dec
# PO4	0	0	64	63	63	66	66	64	66	68	71	75
# PO4 > 5.5	0	0	38	29	36	39	31	32	30	28	33	34
Pop. Mean	0	0	6.2	5.7	5.7	6.0	5.5	5.7	5.8	5.5	5.7	5.5
Std. Deviation	0	0	1.50	1.60	1.37	1.57	1.44	1.64	1.70	1.56	1.74	1.26
% PO4 > 5.5	0%	0%	59%	46%	57%	59%	47%	50%	45%	41%	46%	45%

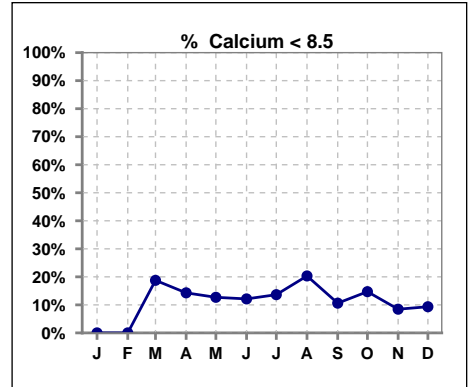


Methodology: a) All labs for 'Adequacy of Dialysis', 'Nutrition', 'Osteodystrophy', 'Anemia' and 'Diabetes' based on last value of month; b) BP's and #L processed are average of all values for month; c) Access data takes last access of month; d) Values for SGA and 'Infection Control' use most recent result.

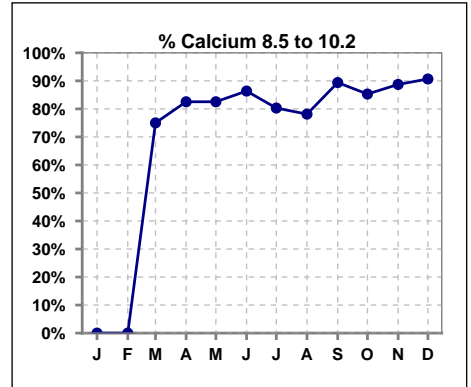
Lab methodology for PTH changed January 2012

III. OSTEODYSTROPHY - CONT.

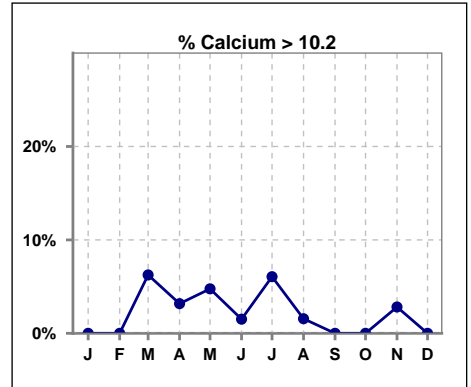
	Jan	Feb	Mar	Apr	May	Jun	Jul	Aug	Sep	Oct	Nov	Dec
# Calcium	0	0	64	63	63	66	66	64	66	68	71	75
# Calcium < 8.5	0	0	12	9	8	8	9	13	7	10	6	7
Pop. Mean	0	0	9.2	9.2	9.2	9.2	9.2	9.1	9.2	9.1	9.2	9.2
Std. Deviation	0	0	0.84	0.71	0.73	0.66	0.83	0.81	0.74	0.70	0.60	0.56
% Calcium < 8.5	0%	0%	19%	14%	13%	12%	14%	20%	11%	15%	8%	9%



	Jan	Feb	Mar	Apr	May	Jun	Jul	Aug	Sep	Oct	Nov	Dec
# Calcium	0	0	64	63	63	66	66	64	66	68	71	75
# Calcium 8.5 to 10.2	0	0	48	52	52	57	53	50	59	58	63	68
Pop. Mean	0	0	9.2	9.2	9.2	9.2	9.2	9.1	9.2	9.1	9.2	9.2
Std. Deviation	0	0	0.84	0.71	0.73	0.66	0.83	0.81	0.74	0.70	0.60	0.56
% Calcium 8.5 to 10.2	0%	0%	75%	83%	83%	86%	80%	78%	89%	85%	89%	91%



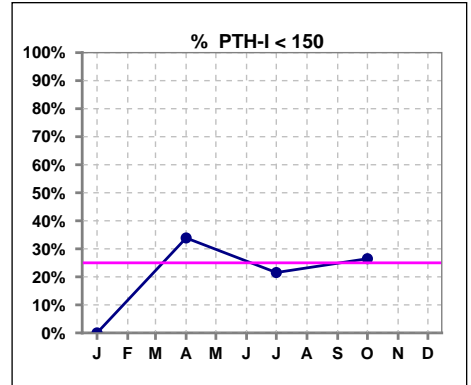
	Jan	Feb	Mar	Apr	May	Jun	Jul	Aug	Sep	Oct	Nov	Dec
# Calcium	0	0	64	63	63	66	66	64	66	68	71	75
# Calcium > 10.2	0	0	4	2	3	1	4	1	0	0	2	0
Pop. Mean	0	0	9.2	9.2	9.2	9.2	9.2	9.1	9.2	9.1	9.2	9.2
Std. Deviation	0	0	0.84	0.71	0.73	0.66	0.83	0.81	0.74	0.70	0.60	0.56
% Calcium > 10.2	0%	0%	6%	3%	5%	2%	6%	2%	0%	0%	3%	0%



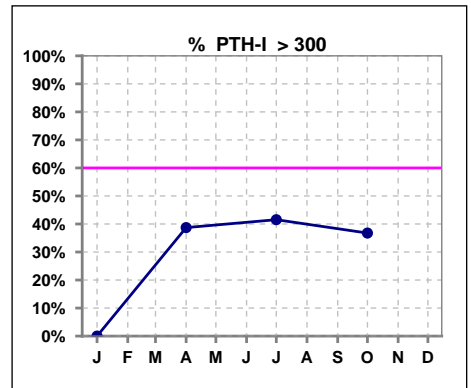
Lab methodology for PTH changed January 2012

III. OSTEODYSTROPHY - CONT.

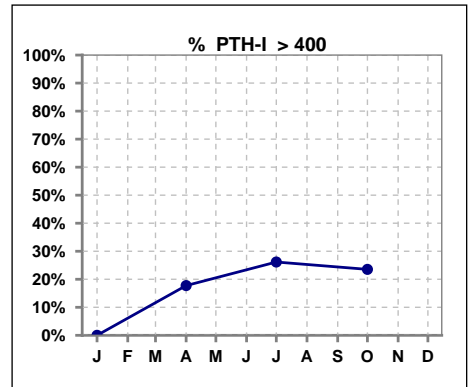
	Jan	Feb	Mar	Apr	May	Jun	Jul	Aug	Sep	Oct	Nov	Dec
# PTH-I	0			62			65			68		
# PTH-I < 150	0			21			14			18		
Pop. Mean	0			281			309			299		
Std. Deviation	0			235			217			212		
% PTH-I < 150	0%			34%			22%			26%		



	Jan	Feb	Mar	Apr	May	Jun	Jul	Aug	Sep	Oct	Nov	Dec
# PTH-I	0			62			65			68		
# PTH-I > 300	0			24			27			25		
Pop. Mean	0			281			309			299		
Std. Deviation	0			235			217			212		
% PTH-I > 300	0%			39%			42%			37%		



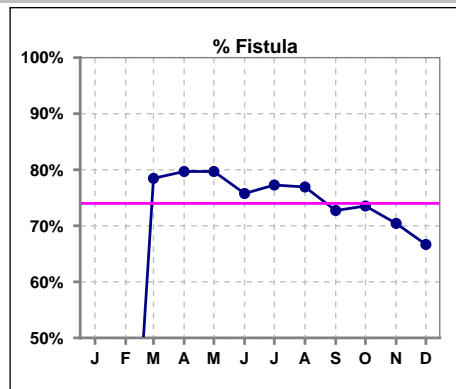
	Jan	Feb	Mar	Apr	May	Jun	Jul	Aug	Sep	Oct	Nov	Dec
# PTH-I	0			62			65			68		
# PTH-I > 400	0			11			17			16		
Pop. Mean	0			281			309			299		
Std. Deviation	0			235			217			212		
% PTH-I > 400	0%			18%			26%			24%		



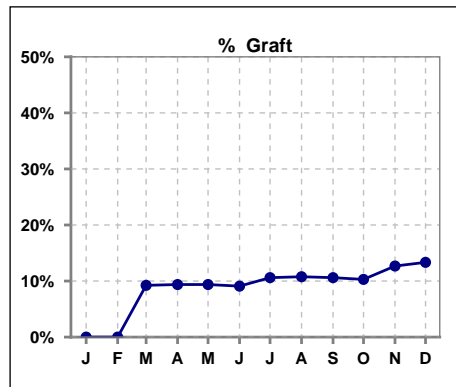
Methodology: a) All labs for 'Adequacy of Dialysis', 'Nutrition', 'Osteodystrophy', 'Anemia' and 'Diabetes' based on last value of month; b) BP's and #L processed are average of all values for month; c) Access data takes last access of month; d) Values for SGA and 'Infection Control' use most recent result.

IV. ACCESS

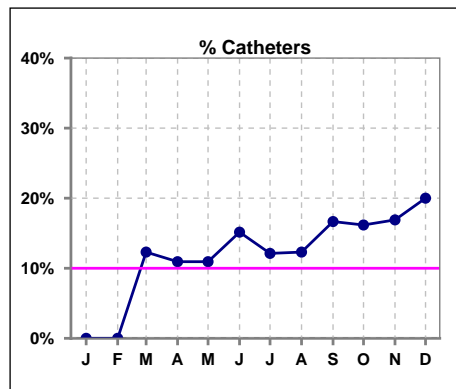
	Jan	Feb	Mar	Apr	May	Jun	Jul	Aug	Sep	Oct	Nov	Dec
# Access	0	0	65	64	64	65	66	65	66	68	71	75
# Fistula	0	0	51	51	51	50	51	50	48	50	50	50
% Fistula	0%	0%	78%	80%	80%	76%	77%	77%	73%	74%	70%	67%



	Jan	Feb	Mar	Apr	May	Jun	Jul	Aug	Sep	Oct	Nov	Dec
# Access	0	0	65	64	64	65	66	65	66	68	71	75
# Graft	0	0	6	6	6	6	7	7	7	7	9	10
% Graft	0%	0%	9%	9%	9%	9%	11%	11%	11%	10%	13%	13%



	Jan	Feb	Mar	Apr	May	Jun	Jul	Aug	Sep	Oct	Nov	Dec
# Access	0	0	65	64	64	65	66	65	66	68	71	75
# Catheters	0	0	8	7	7	10	8	8	11	11	12	15
% Catheters	0%	0%	12%	11%	11%	15%	12%	12%	17%	16%	17%	20%

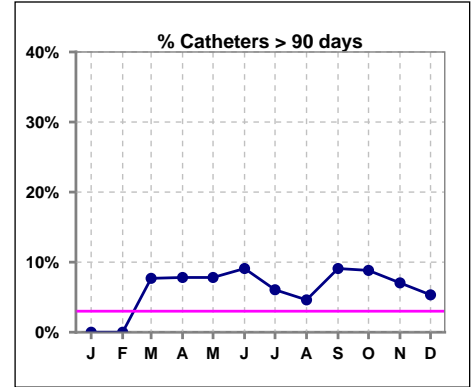


IV. ACCESS - CONT.

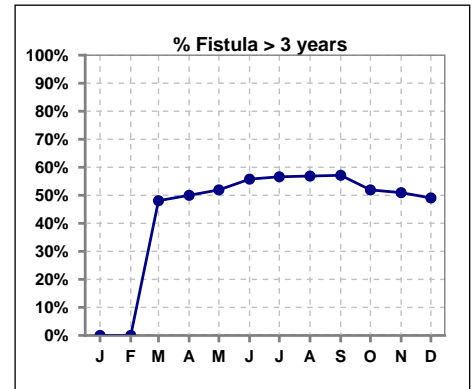
Catheters > 90 days

	Jan	Feb	Mar	Apr	May	Jun	Jul	Aug	Sep	Oct	Nov	Dec
# Access	0	0	65	64	64	66	66	65	66	68	71	75
# Catheters	0	0	5	5	5	6	4	3	6	6	5	4
% Catheters	0%	0%	8%	8%	8%	9%	6%	5%	9%	9%	7%	5%

Definition: Catheter in use on last treatment of the month



	Jan	Feb	Mar	Apr	May	Jun	Jul	Aug	Sep	Oct	Nov	Dec
# Fistula	0	0	52	52	52	52	53	51	49	52	53	53
# Fistula > 3 yrs	0	0	25	26	27	29	30	29	28	27	27	26
% Fistula > 3 yrs	0%	0%	48%	50%	52%	56%	57%	57%	57%	52%	51%	49%



All rates are calculated per 100 patient-month

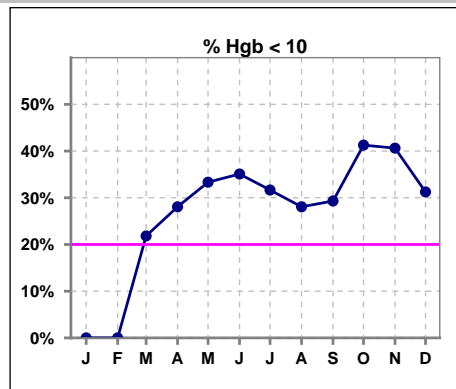
(number of infections/number of accesses x100)

KLKC	Total Fistula	Fistula Infected	Fistula ARB Rate	National Rate	Total Grafts	Graft Infected	Graft ARB Rate	National Rate	Total Cath	Cath Infected	Cath ARB Rate	National Rate	Total Accesses	Total Access Infected	All ARB Rate Per 100 pt- Months	National Rate
2013-2014 Month																
Dec	58	0	0	0.23	5	0	0	0.51	11	0	0	2.55	74	0	0	
Jan	56	0	0	0.23	6	0	0	0.51	12	0	0	2.55	74	0	0	
Feb	58	0	0	0.23	5	0	0	0.51	9	0	0	2.55	72	0	0	
Mar	56	0	0	0.23	6	0	0	0.51	10	0	0	2.55	72	0	0	
April	54	0	0	0.23	6	0	0	0.51	8	0	0	2.55	68	0	0	
May	56	0	0	0.23	6	0	0	0.51	8	0	0	2.55	70	0	0	
June	57	0	0	0.23	4	0	0	0.51	12	0	0	2.55	73	0	0	
July	55	0	0	0.23	5	0	0	0.51	10	0	0	2.55	70	0	0	
August	54	0	0	0.23	7	0	0	0.51	9	0	0	2.55	70	0	0	
Sept	50	0	0	0.23	7	0	0	0.51	7	0	0	2.55	65	0	0	
Oct	50	0	0	0.23	7	0	0	0.51	7	0	0	2.55	67	0	0	
Nov	49	0	0	0.23	7	0	0	0.51	8	0	0	2.55	64	0	0	
Annual Total:	653	0	0		71	0	0		111	0	0		775	0	0	0.88

V. ANEMIA

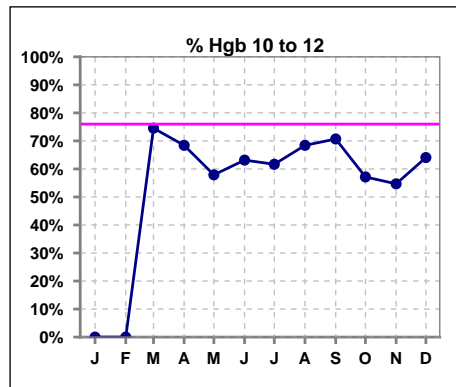
	Jan	Feb	Mar	Apr	May	Jun	Jul	Aug	Sep	Oct	Nov	Dec
# Hgb	0	0	55	57	57	57	60	57	58	63	64	64
# Hgb < 10	0	0	12	16	19	20	19	16	17	26	26	20
Pop. Mean	0	0	10.6	10.4	10.5	10.2	10.5	10.5	10.4	10.2	10.3	10.4
Std. Deviation	0	0	0.9	1.1	1.3	1.0	1.0	1.1	1.2	1.2	1.2	1.1
% Hgb < 10	0%	0%	22%	28%	33%	35%	32%	28%	29%	41%	41%	31%

Note: Excludes patients who received no ESA in month.



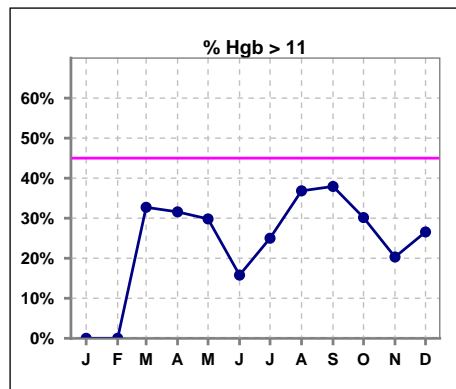
	Jan	Feb	Mar	Apr	May	Jun	Jul	Aug	Sep	Oct	Nov	Dec
# Hgb	0	0	55	57	57	57	60	57	58	63	64	64
# Hgb 10 to 12	0	0	41	39	33	36	37	39	41	36	35	41
Pop. Mean	0	0	10.6	10.4	10.5	10.2	10.5	10.5	10.4	10.2	10.3	10.4
Std. Deviation	0	0	0.9	1.1	1.3	1.0	1.0	1.1	1.2	1.2	1.2	1.1
% Hgb 10 to 12	0%	0%	75%	68%	58%	63%	62%	68%	71%	57%	55%	64%

Note: Excludes patients who received no ESA in month.



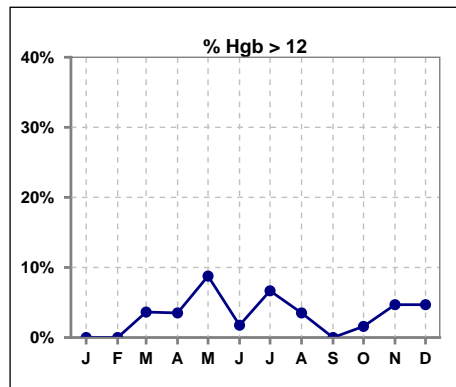
	Jan	Feb	Mar	Apr	May	Jun	Jul	Aug	Sep	Oct	Nov	Dec
# Hgb	0	0	55	57	57	57	60	57	58	63	64	64
# Hgb > 11	0	0	18	18	17	9	15	21	22	19	13	17
Pop. Mean	0	0	10.6	10.4	10.5	10.2	10.5	10.5	10.4	10.2	10.3	10.4
Std. Deviation	0	0	0.9	1.1	1.3	1.0	1.0	1.1	1.2	1.2	1.2	1.1
% Hgb > 11	0%	0%	33%	32%	30%	16%	25%	37%	38%	30%	20%	27%

Note: Excludes patients who received no ESA in month.



	Jan	Feb	Mar	Apr	May	Jun	Jul	Aug	Sep	Oct	Nov	Dec
# Hgb	0	0	55	57	57	57	60	57	58	63	64	64
# Hgb > 12	0	0	2	2	5	1	4	2	0	1	3	3
Pop. Mean	0	0	10.6	10.4	10.5	10.2	10.5	10.5	10.4	10.2	10.3	10.4
Std. Deviation	0	0	0.9	1.1	1.3	1.0	1.0	1.1	1.2	1.2	1.2	1.1
% Hgb > 12	0%	0%	4%	4%	9%	2%	7%	4%	0%	2%	5%	5%

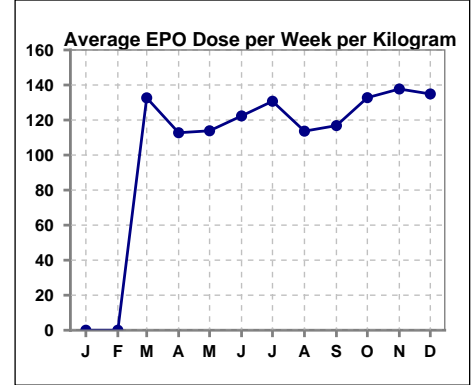
Note: Excludes patients who received no ESA in month.



V. ANEMIA - CONT.

Average EPO Dose per Week per Kilogram

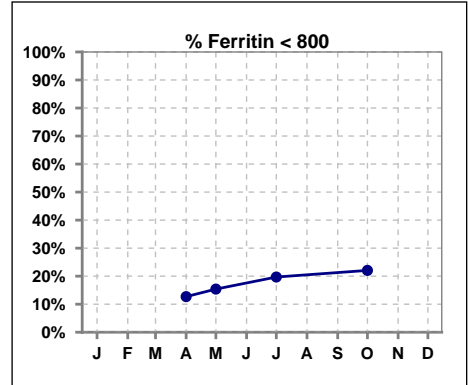
	Jan	Feb	Mar	Apr	May	Jun	Jul	Aug	Sep	Oct	Nov	Dec
# Average EPO	0	0	132.7	112.8	113.9	122.3	130.7	113.7	116.8	132.8	137.7	134.9



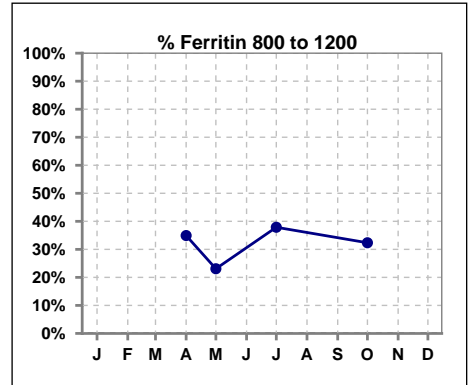
V. ANEMIA - CONT.

Iron Profile

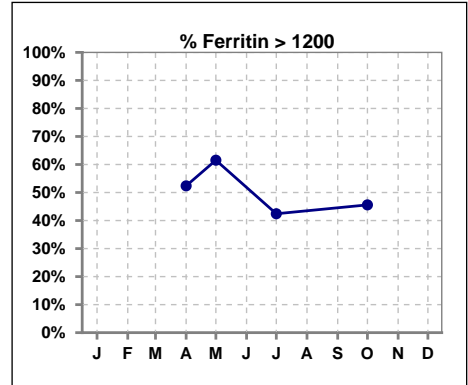
	Jan	Feb	Mar	Apr	May	Jun	Jul	Aug	Sep	Oct	Nov	Dec
# Ferritin				63	13		66			68		
# Ferritin < 800				8	2		13			15		
Pop. Mean				1325	1127		1143			1134		
Std. Deviation				765	474		411			462		
% Ferritin < 800				13%	15%		20%			22%		



	Jan	Feb	Mar	Apr	May	Jun	Jul	Aug	Sep	Oct	Nov	Dec
# Ferritin				63	13		66			68		
# Ferritin 800 to 1200				22	3		25			22		
Pop. Mean				1325	1127		1143			1134		
Std. Deviation				765	474		411			462		
% Ferritin 800 to 1200				35%	23%		38%			32%		

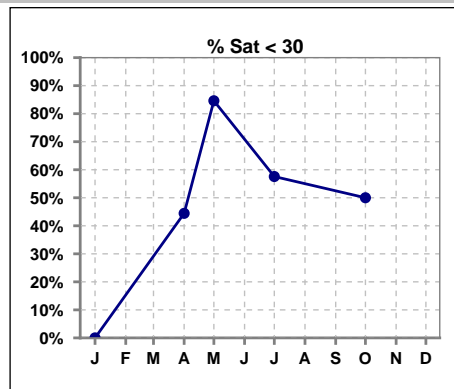


	Jan	Feb	Mar	Apr	May	Jun	Jul	Aug	Sep	Oct	Nov	Dec
# Ferritin				63	13		66			68		
# Ferritin > 1200				33	8		28			31		
Pop. Mean				1325	1127		1143			1134		
Std. Deviation				765	474		411			462		
% Ferritin > 1200				52%	62%		42%			46%		

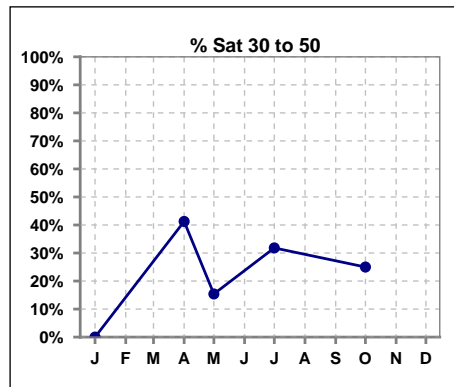


V. ANEMIA - CONT.

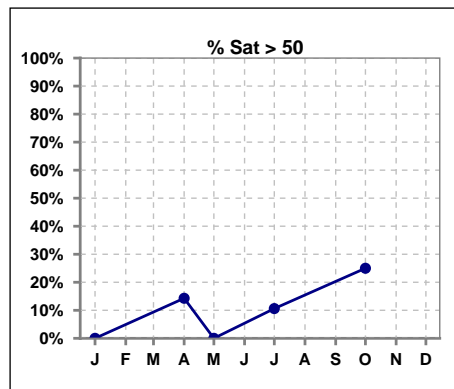
	Jan	Feb	Mar	Apr	May	Jun	Jul	Aug	Sep	Oct	Nov	Dec
# % Sat	0			63	13		66			68		
# % Sat < 30	0			28	11		38			34		
Pop. Mean	0			34	25		31			37		
Std. Deviation	0			16	12		15			25		
%% Sat < 30	0%			44%	85%		58%			50%		



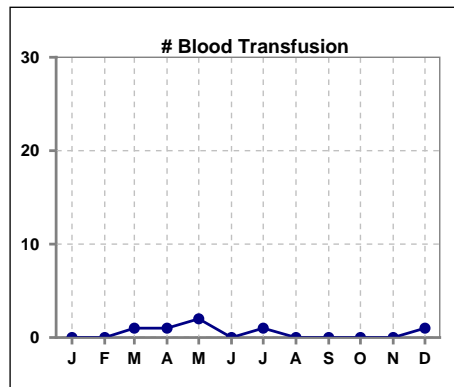
	Jan	Feb	Mar	Apr	May	Jun	Jul	Aug	Sep	Oct	Nov	Dec
# % Sat	0			63	13		66			68		
# % Sat 30 to 50	0			26	2		21			17		
Pop. Mean	0			34	25		31			37		
Std. Deviation	0			16	12		15			25		
%% Sat 30 to 50	0%			41%	15%		32%			25%		



	Jan	Feb	Mar	Apr	May	Jun	Jul	Aug	Sep	Oct	Nov	Dec
# % Sat	0			63	13		66			68		
# % Sat > 50	0			9	0		7			17		
Pop. Mean	0			34	25		31			37		
Std. Deviation	0			16	12		15			25		
%% Sat > 50	0%			14%	0%		11%			25%		



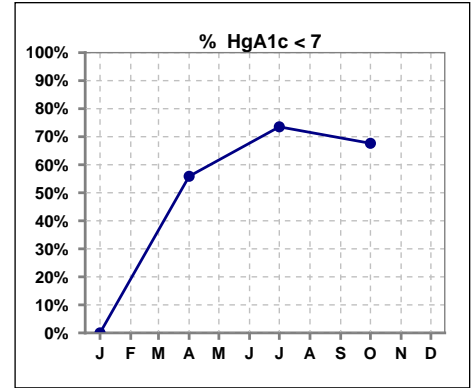
	Jan	Feb	Mar	Apr	May	Jun	Jul	Aug	Sep	Oct	Nov	Dec
# Patient	0	0	65	64	64	67	66	65	67	68	71	75
# Blood Transfusion	0	0	1	1	2	0	1	0	0	0	0	1



Methodology: a) All labs for 'Adequacy of Dialysis', 'Nutrition', 'Osteodystrophy', 'Anemia' and 'Diabetes' based on last value of month; b) BP's and #L processed are average of all values for month; c) Access data takes last access of month; d) Values for SGA and 'Infection Control' use most recent result.

VI. Diabetes

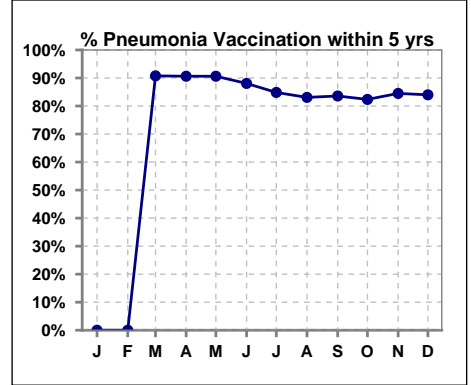
	Jan	Feb	Mar	Apr	May	Jun	Jul	Aug	Sep	Oct	Nov	Dec
# HgA1c	0			34			34			34		
# HgA1c < 7	0			19			25			23		
Pop. Mean	0			6.6			6.3			6.4		
Std. Deviation	0			1.16			1.20			1.14		
% HgA1c < 7	0%			56%			74%			68%		



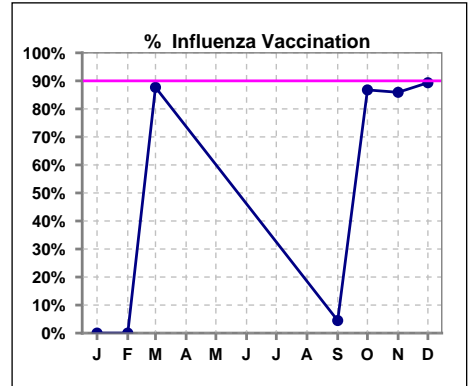
VII. Infection Control

Pneumonia vaccination within the past five years

	Jan	Feb	Mar	Apr	May	Jun	Jul	Aug	Sep	Oct	Nov	Dec
# Patient	0	0	65	64	64	67	66	65	67	68	71	75
# Pneumonia	0	0	59	58	58	59	56	54	56	56	60	63
% Pneumonia	0%	0%	91%	91%	91%	88%	85%	83%	84%	82%	85%	84%



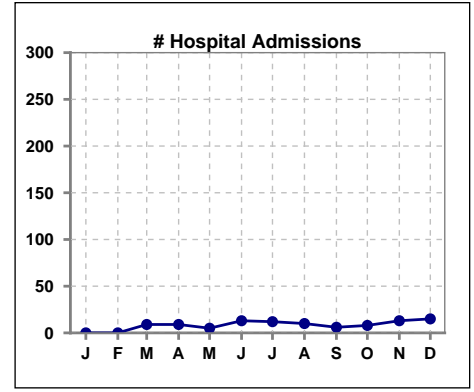
	Jan	Feb	Mar	Apr	May	Jun	Jul	Aug	Sep	Oct	Nov	Dec
# Patient	0	0	65						67	68	71	75
# Influenza	0	0	57						3	59	61	67
% Influenza	0%	0%	88%						4%	87%	86%	89%



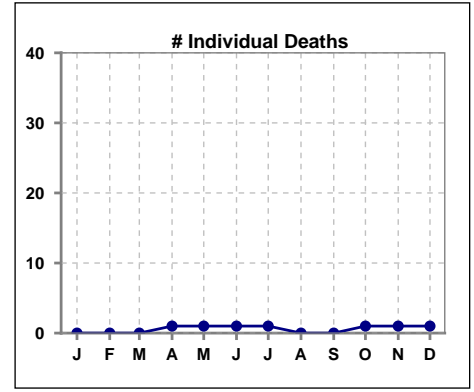
Methodology: a) All labs for 'Adequacy of Dialysis', 'Nutrition', 'Osteodystrophy', 'Anemia' and 'Diabetes' based on last value of month; b) BP's and #L processed are average of all values for month; c) Access data takes last access of month; d) Values for SGA and 'Infection Control' use most recent result.

VIII. Misc

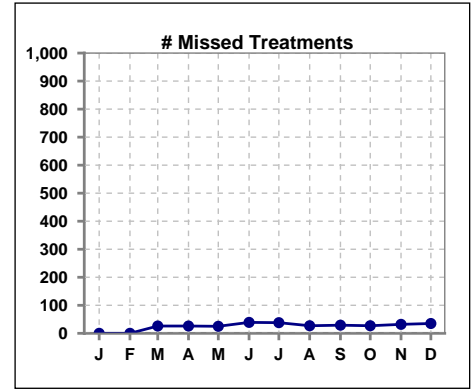
	Jan	Feb	Mar	Apr	May	Jun	Jul	Aug	Sep	Oct	Nov	Dec
# Patient	0	0	65	64	64	67	66	65	67	68	71	75
# Hospital Admissions	0	0	9	9	5	13	12	10	6	8	13	15



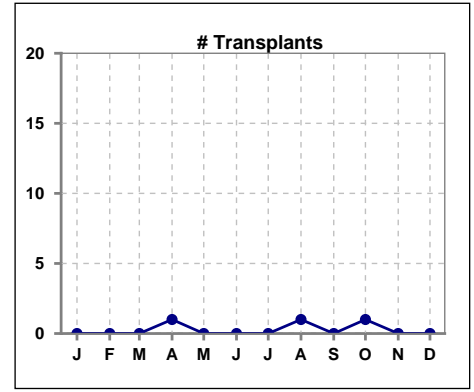
	Jan	Feb	Mar	Apr	May	Jun	Jul	Aug	Sep	Oct	Nov	Dec
# Patient	0	0	65	64	64	67	66	65	67	68	71	75
# Individual Deaths	0	0	0	1	1	1	1	0	0	1	1	1



	Jan	Feb	Mar	Apr	May	Jun	Jul	Aug	Sep	Oct	Nov	Dec
# Patient	0	0	65	64	64	67	66	65	67	68	71	75
# Missed Treatments	0	0	26	26	25	39	38	27	29	27	32	35



	Jan	Feb	Mar	Apr	May	Jun	Jul	Aug	Sep	Oct	Nov	Dec
# Patient	0	0	65	64	64	67	66	65	67	68	71	75
# Transplants	0	0	0	1	0	0	0	1	0	1	0	0



Methodology: a) All labs for 'Adequacy of Dialysis', 'Nutrition', 'Osteodystrophy', 'Anemia' and 'Diabetes' based on last value of month; b) BP's and #L processed are average of all values for month; c) Access data takes last access of month; d) Values for SGA and 'Infection Control' use most recent result.