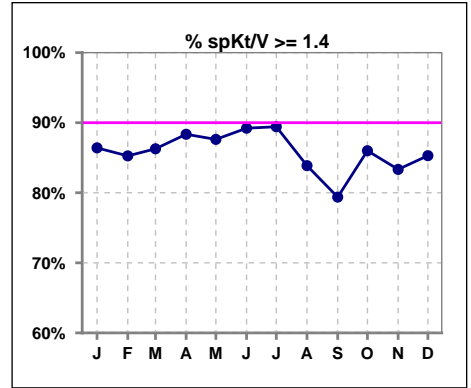
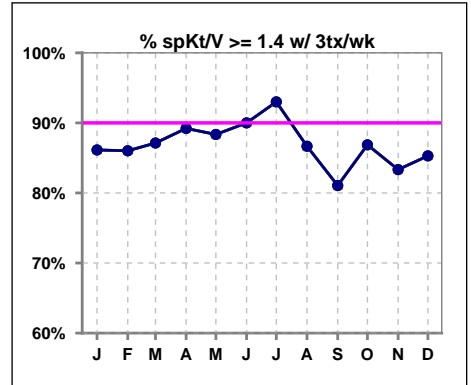


I. ADEQUACY OF DIALYSIS

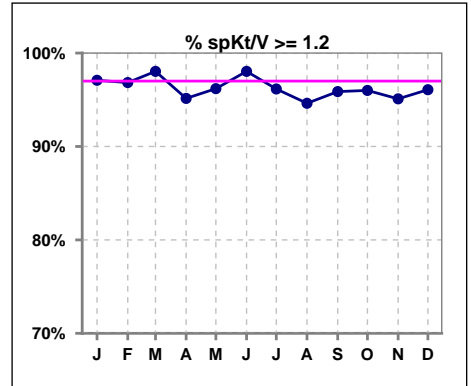
	Jan	Feb	Mar	Apr	May	Jun	Jul	Aug	Sep	Oct	Nov	Dec
# spKt/V	103	95	102	103	105	102	104	93	97	100	102	102
# spKt/V >= 1.4	89	81	88	91	92	91	93	78	77	86	85	87
Pop. Mean	1.70	1.67	1.70	1.71	1.70	1.74	1.72	1.69	1.68	1.67	1.67	1.70
Std. Deviation	0.32	0.30	0.29	0.32	0.30	0.32	0.29	0.32	0.32	0.33	0.34	0.37
% spKt/V >= 1.4	86%	85%	86%	88%	88%	89%	89%	84%	79%	86%	83%	85%



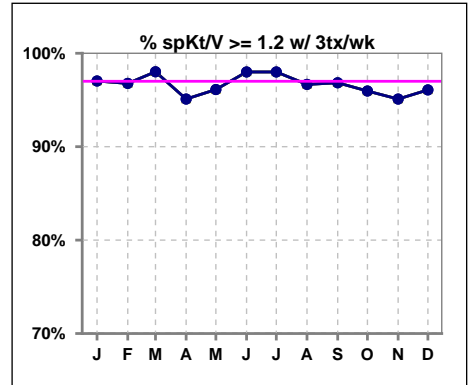
	Jan	Feb	Mar	Apr	May	Jun	Jul	Aug	Sep	Oct	Nov	Dec
# spKt/V w/ 3tx/wk	101	93	101	102	103	100	100	90	95	99	102	102
# spKt/V >= 1.4 w/3tx/wk	87	80	88	91	91	90	93	78	77	86	85	87
Pop. Mean	1.71	1.68	1.70	1.71	1.70	1.75	1.74	1.71	1.69	1.68	1.67	1.70
Std. Deviation	0.33	0.31	0.29	0.32	0.30	0.32	0.27	0.30	0.31	0.33	0.34	0.37
% >= 1.4 w/3tx/wk	86%	86%	87%	89%	88%	90%	93%	87%	81%	87%	83%	85%



	Jan	Feb	Mar	Apr	May	Jun	Jul	Aug	Sep	Oct	Nov	Dec
# spKt/V	103	95	102	103	105	102	104	93	97	100	102	102
# spKt/V >= 1.2	100	92	100	98	101	100	100	88	93	96	97	98
Pop. Mean	1.70	1.67	1.70	1.71	1.70	1.74	1.72	1.69	1.68	1.67	1.67	1.70
Std. Deviation	0.32	0.30	0.29	0.32	0.30	0.32	0.29	0.32	0.32	0.33	0.34	0.37
% spKt/V >= 1.2	97%	97%	98%	95%	96%	98%	96%	95%	96%	96%	95%	96%



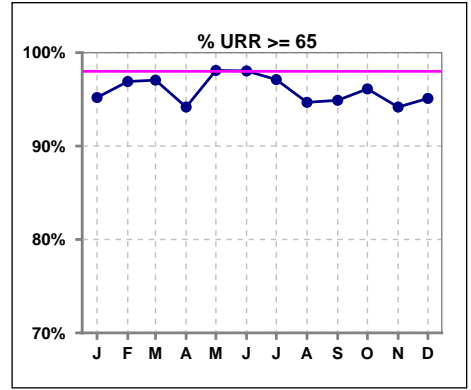
	Jan	Feb	Mar	Apr	May	Jun	Jul	Aug	Sep	Oct	Nov	Dec
# spKt/V w/ 3tx/wk	101	93	101	102	103	100	100	90	95	99	102	102
# spKt/V >= 1.2 w/3tx/wk	98	90	99	97	99	98	98	87	92	95	97	98
Pop. Mean	1.71	1.68	1.70	1.71	1.70	1.75	1.74	1.71	1.69	1.68	1.67	1.70
Std. Deviation	0.33	0.31	0.29	0.32	0.30	0.32	0.27	0.30	0.31	0.33	0.34	0.37
% >= 1.2 w/3tx/wk	97%	97%	98%	95%	96%	98%	98%	97%	97%	96%	95%	96%



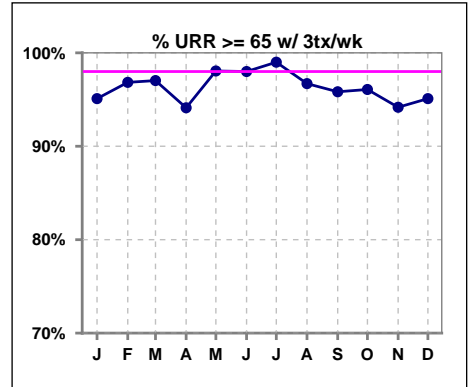
Methodology: a) All labs for 'Adequacy of Dialysis', 'Nutrition', 'Osteodystrophy', 'Anemia' and 'Diabetes' based on last value of month; b) BP's and #L processed are average of all values for month; c) Access data takes last access of month; d) Values for SGA and 'Infection Control' use most recent result.

I. ADEQUACY OF DIALYSIS - CONT.

	Jan	Feb	Mar	Apr	May	Jun	Jul	Aug	Sep	Oct	Nov	Dec
# URR	104	97	102	103	105	102	104	94	98	103	103	102
# URR >= 65	99	94	99	97	103	100	101	89	93	99	97	97
Pop. Mean	77	76	77	77	77	77	77	76	75	76	76	76
Std. Deviation	6.53	6.33	5.64	6.65	6.02	5.97	5.79	6.50	8.38	7.32	7.68	7.46
% URR >= 65	95%	97%	97%	94%	98%	98%	97%	95%	95%	96%	94%	95%



	Jan	Feb	Mar	Apr	May	Jun	Jul	Aug	Sep	Oct	Nov	Dec
# URR w/ 3tx/wk	102	95	101	102	103	100	100	91	96	102	103	102
# URR>=65 w/ 3tx/wk	97	92	98	96	101	98	99	88	92	98	97	97
Pop. Mean	77	76	77	77	77	78	77	77	76	76	76	76
Std. Deviation	6.59	6.33	5.63	6.65	5.97	5.93	5.36	6.18	8.13	7.28	7.68	7.46
% URR>=65 w/ 3tx/wk	95%	97%	97%	94%	98%	98%	99%	97%	96%	96%	94%	95%

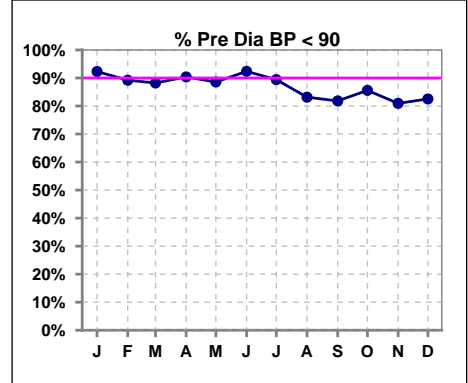


Methodology: a) All labs for 'Adequacy of Dialysis', 'Nutrition', 'Osteodystrophy', 'Anemia' and 'Diabetes' based on last value of month; b) BP's and #L processed are average of all values for month; c) Access data takes last access of month; d) Values for SGA and 'Infection Control' use most recent result.

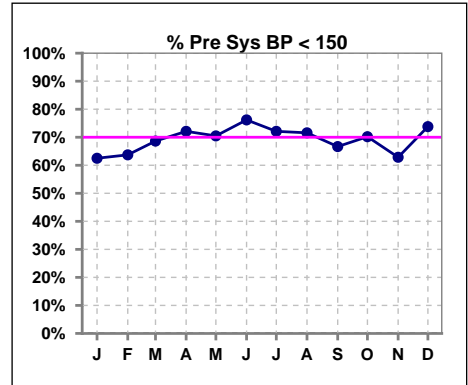
I. ADEQUACY OF DIALYSIS - CONT.

Blood Pressure Control (Pre)

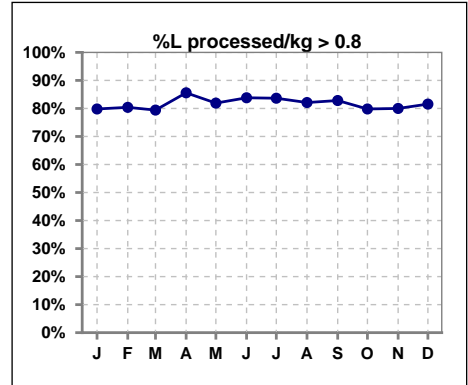
	Jan	Feb	Mar	Apr	May	Jun	Jul	Aug	Sep	Oct	Nov	Dec
# Pre Dia BP	104	102	102	104	105	105	104	95	99	104	105	103
# Pre Dia BP < 90	96	91	90	94	93	97	93	79	81	89	85	85
Pop. Mean	72	73	73	73	75	75	75	77	78	77	78	77
Std. Deviation	12.5	13.8	13.0	13.1	12.6	12.7	12.1	12.1	12.9	11.9	13.2	13.3
% Pre Dia BP < 90	92%	89%	88%	90%	89%	92%	89%	83%	82%	86%	81%	83%



	Jan	Feb	Mar	Apr	May	Jun	Jul	Aug	Sep	Oct	Nov	Dec
# Pre Sys BP	104	102	102	104	105	105	104	95	99	104	105	103
# Pre Sys BP < 150	65	65	70	75	74	80	75	68	66	73	66	76
Pop. Mean	139	139	140	138	139	137	138	140	142	141	141	140
Std. Deviation	20.5	21.5	20.2	21.3	20.7	20.2	19.4	19.6	20.6	19.0	20.4	19.6
%Pre Sys BP <150	63%	64%	69%	72%	70%	76%	72%	72%	67%	70%	63%	74%



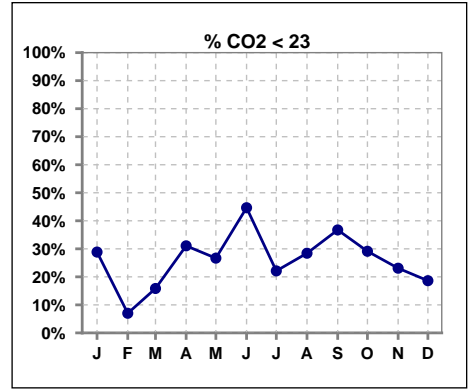
	Jan	Feb	Mar	Apr	May	Jun	Jul	Aug	Sep	Oct	Nov	Dec
# L processed/kg	104	102	102	104	105	105	104	95	99	104	105	103
# L processed/kg>0.8	83	82	81	89	86	88	87	78	82	83	84	84
Pop. Mean	1	1	1	1	1	1	1	1	1	1	1	1
Std. Deviation	0.3	0.5	0.3	0.3	0.3	0.3	0.3	0.3	0.3	0.3	0.3	0.3
% L processed/kg>0.8	80%	80%	79%	86%	82%	84%	84%	82%	83%	80%	80%	82%



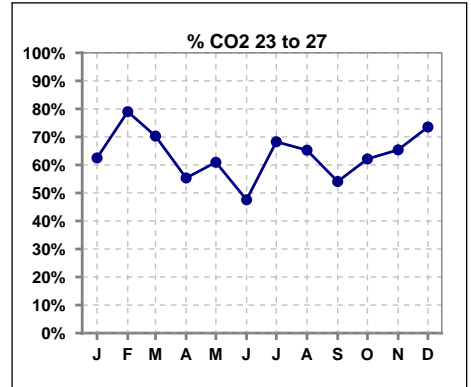
Methodology: a) All labs for 'Adequacy of Dialysis', 'Nutrition', 'Osteodystrophy', 'Anemia' and 'Diabetes' based on last value of month; b) BP's and #L processed are average of all values for month; c) Access data takes last access of month; d) Values for SGA and 'Infection Control' use most recent result.

I. ADEQUACY OF DIALYSIS - CONT.

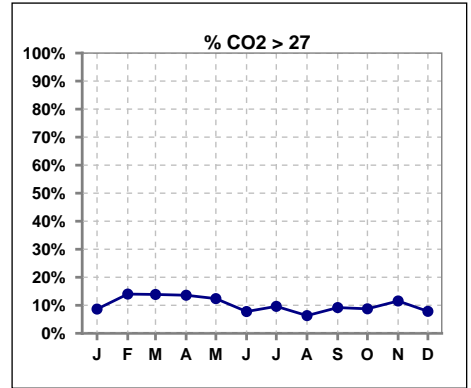
	Jan	Feb	Mar	Apr	May	Jun	Jul	Aug	Sep	Oct	Nov	Dec
# CO2	104	100	101	103	105	103	104	95	98	103	104	102
# CO2 < 23	30	7	16	32	28	46	23	27	36	30	24	19
Pop. Mean	24	25	25	24	24	23	24	24	24	24	24	24
Std. Deviation	2.50	2.28	2.63	3.31	2.81	3.16	3.15	2.71	2.85	2.77	2.73	2.53
% CO2 < 23	29%	7%	16%	31%	27%	45%	22%	28%	37%	29%	23%	19%



	Jan	Feb	Mar	Apr	May	Jun	Jul	Aug	Sep	Oct	Nov	Dec
# CO2	104	100	101	103	105	103	104	95	98	103	104	102
# CO2 23 to 27	65	79	71	57	64	49	71	62	53	64	68	75
Pop. Mean	24	25	25	24	24	23	24	24	24	24	24	24
Std. Deviation	2.50	2.28	2.63	3.31	2.81	3.16	3.15	2.71	2.85	2.77	2.73	2.53
% CO2 23 to 27	63%	79%	70%	55%	61%	48%	68%	65%	54%	62%	65%	74%



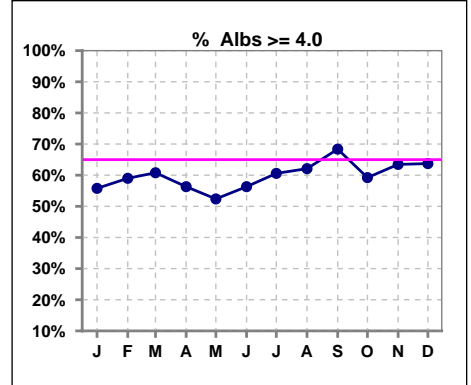
	Jan	Feb	Mar	Apr	May	Jun	Jul	Aug	Sep	Oct	Nov	Dec
# CO2	104	100	101	103	105	103	104	95	98	103	104	102
# CO2 > 27	9	14	14	14	13	8	10	6	9	9	12	8
Pop. Mean	24	25	25	24	24	23	24	24	24	24	24	24
Std. Deviation	2.50	2.28	2.63	3.31	2.81	3.16	3.15	2.71	2.85	2.77	2.73	2.53
% CO2 > 27	9%	14%	14%	14%	12%	8%	10%	6%	9%	9%	12%	8%



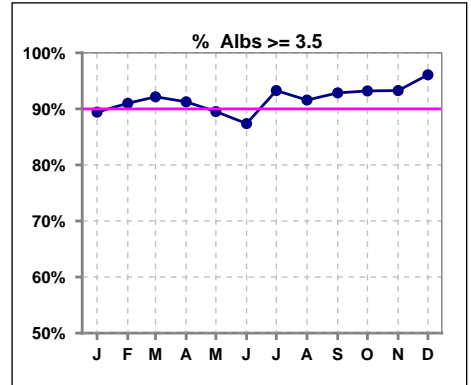
*Albumin values use BCG method - as of July 2001

II. NUTRITION

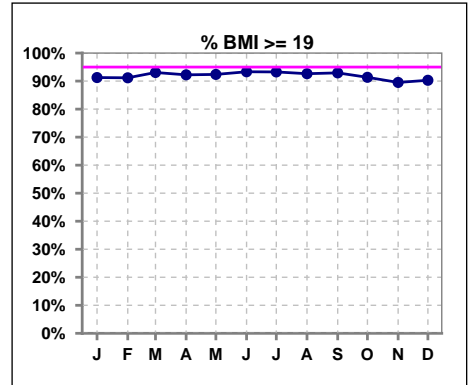
	Jan	Feb	Mar	Apr	May	Jun	Jul	Aug	Sep	Oct	Nov	Dec
# Albumin	104	100	102	103	105	103	104	95	98	103	104	102
# Albumin >= 4.0	58	59	62	58	55	58	63	59	67	61	66	65
Pop. Mean	4.0	4.0	4.0	3.9	3.9	3.9	4.0	4.0	4.0	4.0	4.1	4.0
Std. Deviation	0.43	0.42	0.39	0.43	0.41	0.40	0.39	0.39	0.36	0.34	0.32	0.32
% Alb >= 4.0	56%	59%	61%	56%	52%	56%	61%	62%	68%	59%	63%	64%



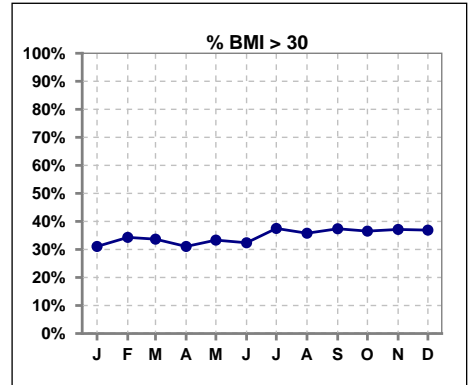
	Jan	Feb	Mar	Apr	May	Jun	Jul	Aug	Sep	Oct	Nov	Dec
# Albumin	104	100	102	103	105	103	104	95	98	103	104	102
# Albumin >= 3.5	93	91	94	94	94	90	97	87	91	96	97	98
Pop. Mean	4.0	4.0	4.0	3.9	3.9	3.9	4.0	4.0	4.0	4.0	4.1	4.0
Std. Deviation	0.43	0.42	0.39	0.43	0.41	0.40	0.39	0.39	0.36	0.34	0.32	0.32
% Alb >= 3.5	89%	91%	92%	91%	90%	87%	93%	92%	93%	93%	93%	96%



	Jan	Feb	Mar	Apr	May	Jun	Jul	Aug	Sep	Oct	Nov	Dec
# BMI	103	102	101	103	105	105	104	95	99	104	105	103
# BMI >= 19	94	93	94	95	97	98	97	88	92	95	94	93
Pop. Mean	28	28	28	27	27	27	28	28	28	28	28	28
Std. Deviation	8.2	8.2	7.7	7.7	7.9	7.8	7.9	8.0	8.0	8.1	8.2	8.1
% BMI >= 19	91%	91%	93%	92%	92%	93%	93%	93%	93%	91%	90%	90%



	Jan	Feb	Mar	Apr	May	Jun	Jul	Aug	Sep	Oct	Nov	Dec
# BMI	103	102	101	103	105	105	104	95	99	104	105	103
# BMI > 30	32	35	34	32	35	34	39	34	37	38	39	38
Pop. Mean	28	28	28	27	27	27	28	28	28	28	28	28
Std. Deviation	8.2	8.2	7.7	7.7	7.9	7.8	7.9	8.0	8.0	8.1	8.2	8.1
% BMI > 30	31%	34%	34%	31%	33%	32%	38%	36%	37%	37%	37%	37%

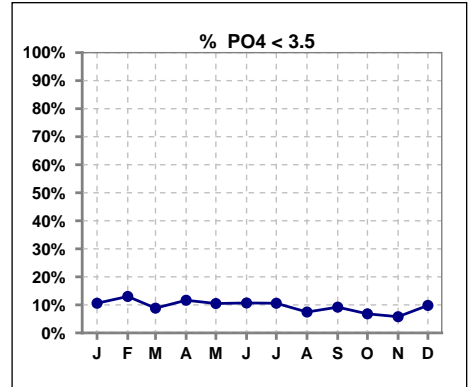


Methodology: a) All labs for 'Adequacy of Dialysis', 'Nutrition', 'Osteodystrophy', 'Anemia' and 'Diabetes' based on last value of month; b) BP's and #L processed are average of all values for month; c) Access data takes last access of month; d) Values for SGA and 'Infection Control' use most recent result.

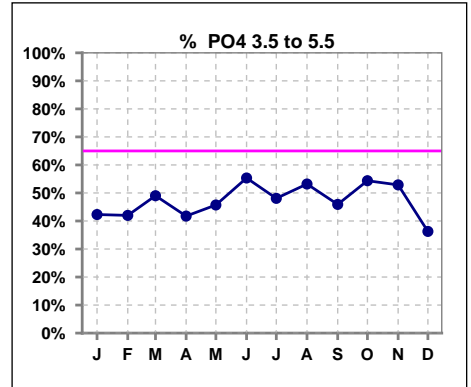
Lab methodology for PTH changed January 2012

III. OSTEODYSTROPHY

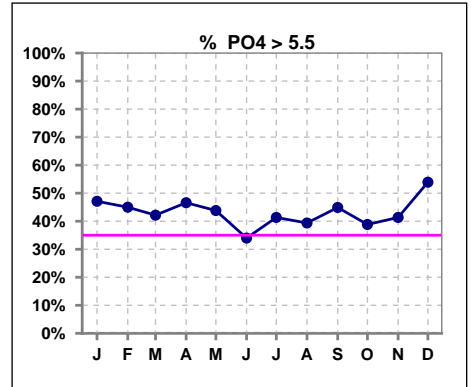
	Jan	Feb	Mar	Apr	May	Jun	Jul	Aug	Sep	Oct	Nov	Dec
# PO4	104	100	102	103	105	103	104	94	98	103	104	102
# PO4 < 3.5	11	13	9	12	11	11	11	7	9	7	6	10
Pop. Mean	5.6	5.6	5.5	5.6	5.5	5.2	5.5	5.5	5.7	5.5	5.7	5.9
Std. Deviation	1.83	1.96	1.83	1.88	2.09	1.80	1.83	1.92	1.89	1.74	2.05	1.90
% PO4 < 3.5	11%	13%	9%	12%	10%	11%	11%	7%	9%	7%	6%	10%



	Jan	Feb	Mar	Apr	May	Jun	Jul	Aug	Sep	Oct	Nov	Dec
# PO4	104	100	102	103	105	103	104	94	98	103	104	102
# PO4 3.5 to 5.5	44	42	50	43	48	57	50	50	45	56	55	37
Pop. Mean	5.6	5.6	5.5	5.6	5.5	5.2	5.5	5.5	5.7	5.5	5.7	5.9
Std. Deviation	1.83	1.96	1.83	1.88	2.09	1.80	1.83	1.92	1.89	1.74	2.05	1.90
% PO4 3.5 to 5.5	42%	42%	49%	42%	46%	55%	48%	53%	46%	54%	53%	36%



	Jan	Feb	Mar	Apr	May	Jun	Jul	Aug	Sep	Oct	Nov	Dec
# PO4	104	100	102	103	105	103	104	94	98	103	104	102
# PO4 > 5.5	49	45	43	48	46	35	43	37	44	40	43	55
Pop. Mean	5.6	5.6	5.5	5.6	5.5	5.2	5.5	5.5	5.7	5.5	5.7	5.9
Std. Deviation	1.83	1.96	1.83	1.88	2.09	1.80	1.83	1.92	1.89	1.74	2.05	1.90
% PO4 > 5.5	47%	45%	42%	47%	44%	34%	41%	39%	45%	39%	41%	54%

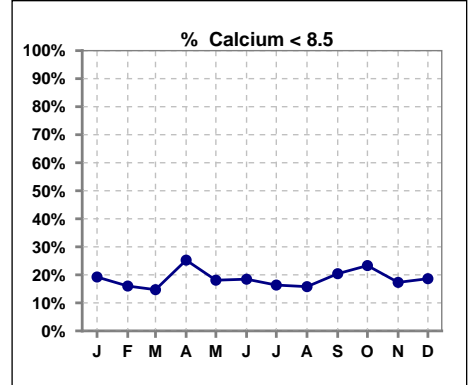


Methodology: a) All labs for 'Adequacy of Dialysis', 'Nutrition', 'Osteodystrophy', 'Anemia' and 'Diabetes' based on last value of month; b) BP's and #L processed are average of all values for month; c) Access data takes last access of month; d) Values for SGA and 'Infection Control' use most recent result.

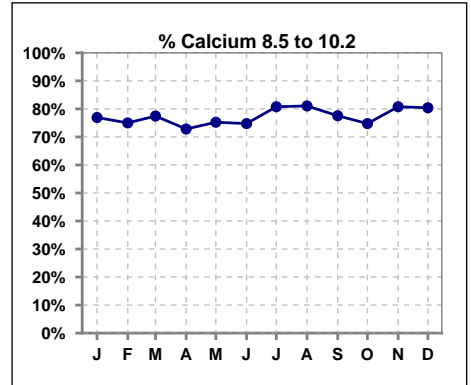
Lab methodology for PTH changed January 2012

III. OSTEODYSTROPHY - CONT.

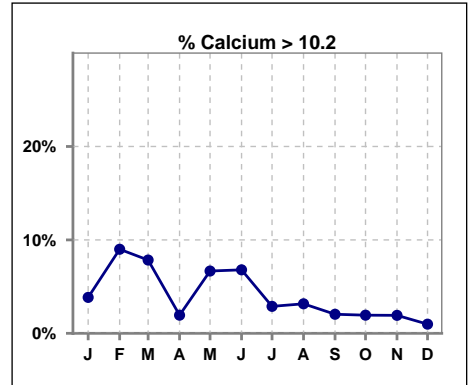
	Jan	Feb	Mar	Apr	May	Jun	Jul	Aug	Sep	Oct	Nov	Dec
# Calcium	104	100	102	103	105	103	104	95	98	103	104	102
# Calcium < 8.5	20	16	15	26	19	19	17	15	20	24	18	19
Pop. Mean	9.0	9.1	9.1	9.0	9.1	9.1	8.9	9.1	9.0	9.0	9.0	8.9
Std. Deviation	0.76	0.77	0.79	0.72	0.82	0.79	0.68	0.77	0.76	0.80	0.79	0.82
% Calcium < 8.5	19%	16%	15%	25%	18%	18%	16%	16%	20%	23%	17%	19%



	Jan	Feb	Mar	Apr	May	Jun	Jul	Aug	Sep	Oct	Nov	Dec
# Calcium	104	100	102	103	105	103	104	95	98	103	104	102
# Calcium 8.5 to 10.2	80	75	79	75	79	77	84	77	76	77	84	82
Pop. Mean	9.0	9.1	9.1	9.0	9.1	9.1	8.9	9.1	9.0	9.0	9.0	8.9
Std. Deviation	0.76	0.77	0.79	0.72	0.82	0.79	0.68	0.77	0.76	0.80	0.79	0.82
% Calcium 8.5 to 10.2	77%	75%	77%	73%	75%	75%	81%	81%	78%	75%	81%	80%



	Jan	Feb	Mar	Apr	May	Jun	Jul	Aug	Sep	Oct	Nov	Dec
# Calcium	104	100	102	103	105	103	104	95	98	103	104	102
# Calcium > 10.2	4	9	8	2	7	7	3	3	2	2	2	1
Pop. Mean	9.0	9.1	9.1	9.0	9.1	9.1	8.9	9.1	9.0	9.0	9.0	8.9
Std. Deviation	0.76	0.77	0.79	0.72	0.82	0.79	0.68	0.77	0.76	0.80	0.79	0.82
% Calcium > 10.2	4%	9%	8%	2%	7%	7%	3%	3%	2%	2%	2%	1%

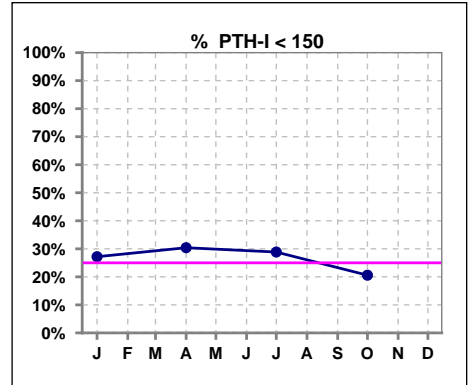


Methodology: a) All labs for 'Adequacy of Dialysis', 'Nutrition', 'Osteodystrophy', 'Anemia' and 'Diabetes' based on last value of month; b) BP's and #L processed are average of all values for month; c) Access data takes last access of month; d) Values for SGA and 'Infection Control' use most recent result.

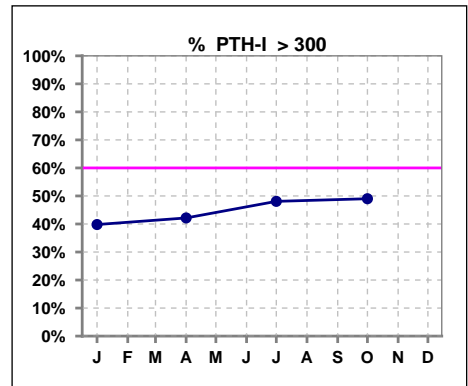
Lab methodology for PTH changed January 2012

III. OSTEODYSTROPHY - CONT.

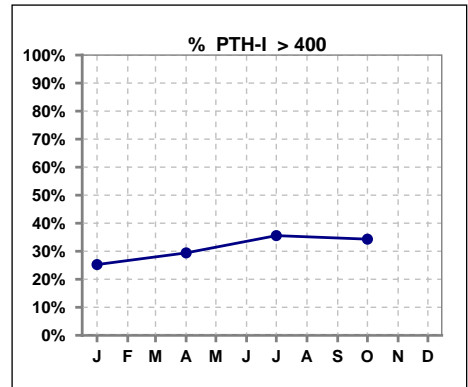
	Jan	Feb	Mar	Apr	May	Jun	Jul	Aug	Sep	Oct	Nov	Dec
# PTH-I	103			102			104			102		
# PTH-I < 150	28			31			30			21		
Pop. Mean	301			320			343			351		
Std. Deviation	237			255			268			258		
% PTH-I < 150	27%			30%			29%			21%		



	Jan	Feb	Mar	Apr	May	Jun	Jul	Aug	Sep	Oct	Nov	Dec
# PTH-I	103			102			104			102		
# PTH-I > 300	41			43			50			50		
Pop. Mean	301			320			343			351		
Std. Deviation	237			255			268			258		
% PTH-I > 300	40%			42%			48%			49%		



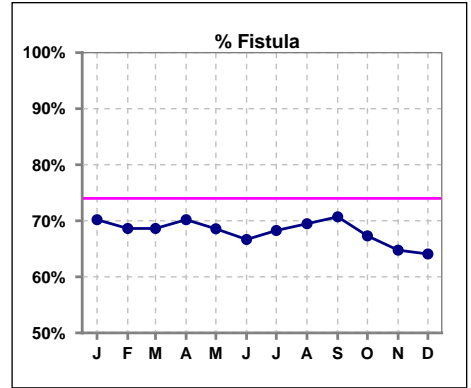
	Jan	Feb	Mar	Apr	May	Jun	Jul	Aug	Sep	Oct	Nov	Dec
# PTH-I	103			102			104			102		
# PTH-I > 400	26			30			37			35		
Pop. Mean	301			320			343			351		
Std. Deviation	237			255			268			258		
% PTH-I > 400	25%			29%			36%			34%		



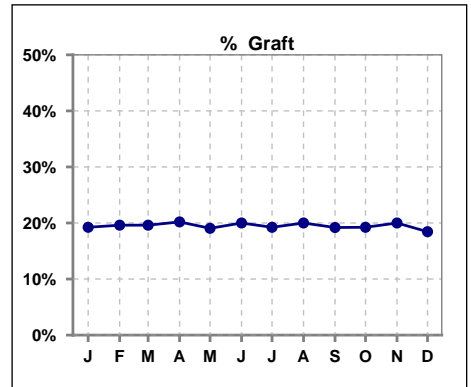
Methodology: a) All labs for 'Adequacy of Dialysis', 'Nutrition', 'Osteodystrophy', 'Anemia' and 'Diabetes' based on last value of month; b) BP's and #L processed are average of all values for month; c) Access data takes last access of month; d) Values for SGA and 'Infection Control' use most recent result.

IV. ACCESS

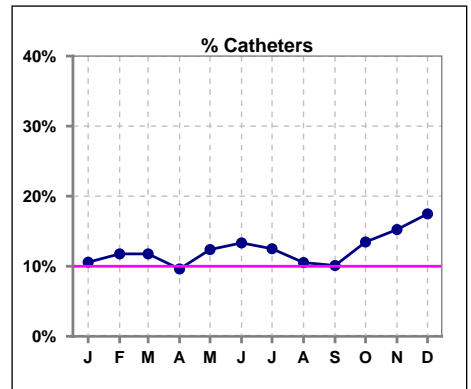
	Jan	Feb	Mar	Apr	May	Jun	Jul	Aug	Sep	Oct	Nov	Dec
# Access	104	102	102	104	105	105	104	95	99	104	105	103
# Fistula	73	70	70	73	72	70	71	66	70	70	68	66
% Fistula	70%	69%	69%	70%	69%	67%	68%	69%	71%	67%	65%	64%



	Jan	Feb	Mar	Apr	May	Jun	Jul	Aug	Sep	Oct	Nov	Dec
# Access	104	102	102	104	105	105	104	95	99	104	105	103
# Graft	20	20	20	21	20	21	20	19	19	20	21	19
% Graft	19%	20%	20%	20%	19%	20%	19%	20%	19%	19%	20%	18%



	Jan	Feb	Mar	Apr	May	Jun	Jul	Aug	Sep	Oct	Nov	Dec
# Access	104	102	102	104	105	105	104	95	99	104	105	103
# Catheters	11	12	12	10	13	14	13	10	10	14	16	18
% Catheters	11%	12%	12%	10%	12%	13%	13%	11%	10%	13%	15%	17%



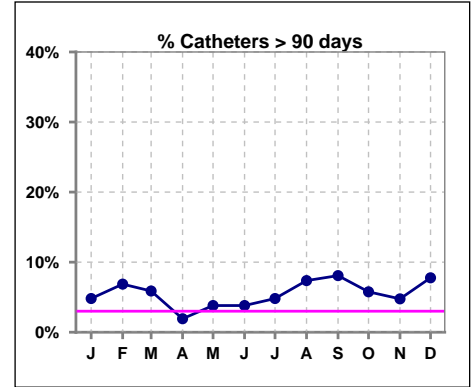
Methodology: a) All labs for 'Adequacy of Dialysis', 'Nutrition', 'Osteodystrophy', 'Anemia' and 'Diabetes' based on last value of month; b) BP's and #L processed are average of all values for month; c) Access data takes last access of month; d) Values for SGA and 'Infection Control' use most recent result.

IV. ACCESS - CONT.

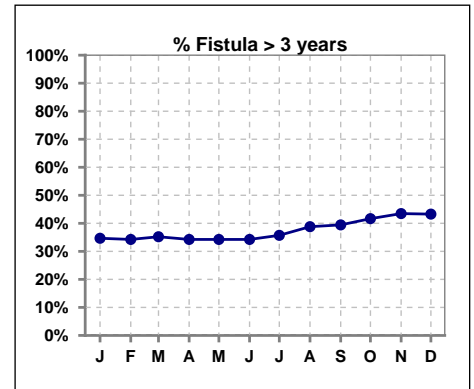
Catheters > 90 days

	Jan	Feb	Mar	Apr	May	Jun	Jul	Aug	Sep	Oct	Nov	Dec
# Access	104	102	102	104	105	105	104	95	99	104	105	103
# Catheters	5	7	6	2	4	4	5	7	8	6	5	8
% Catheters	5%	7%	6%	2%	4%	4%	5%	7%	8%	6%	5%	8%

Definition: Catheter in use on last treatment of the month



	Jan	Feb	Mar	Apr	May	Jun	Jul	Aug	Sep	Oct	Nov	Dec
# Fistula	75	73	71	73	73	73	70	67	71	72	69	67
# Fistula > 3 yrs	26	25	25	25	25	25	25	26	28	30	30	29
% Fistula > 3 yrs	35%	34%	35%	34%	34%	34%	36%	39%	39%	42%	43%	43%



Methodology: a) All labs for 'Adequacy of Dialysis', 'Nutrition', 'Osteodystrophy', 'Anemia' and 'Diabetes' based on last value of month; b) BP's and #L processed are average of all values for month; c) Access data takes last access of month; d) Values for SGA and 'Infection Control' use most recent result.

All rates are calculated per 100 patient-month

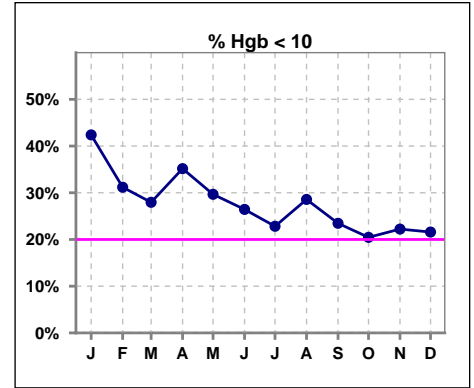
(number of infections/number of accesses x100)

KKC	Total Fistula	Fistula Infected	Fistula ARB Rate	National Rate	Total Grafts	Graft Infected	Graft ARB Rate	National Rate	Total Cath	Cath Infected	Cath ARB Rate	National Rate	Total Accesses	Total Access Infected	All ARB Rate Per 100 pt- Months	National Rate
2013-2014 Month																
Dec	65	0	0	0.23	15	0	0	0.51	24	0	0	2.55	104	0	0	
Jan	67	0	0	0.23	18	0	0	0.51	19	0	0	2.55	104	0	0	
Feb	66	0	0	0.23	20	0	0	0.51	16	0	0	2.55	102	0	0	
Mar	67	0	0	0.23	20	0	0	0.51	14	0	0	2.55	101	0	0	
April	70	1	1.4286	0.23	19	0	0	0.51	5	1	20	2.55	105	2	2.120	
May	70	0	0	0.23	20	0	0	0.51	17	0	0	2.55	107	0	0	
June	73	0	0	0.23	20	0	0	0.51	8	0	0	2.55	101	0	0	
July	69	0	0	0.23	22	0	0	0.51	8	0	0	2.55	99	0	0	
Aug	69	0	0	0.23	22	0	0	0.51	5	0	0	2.55	96	0	0	
Sept	66	0	0	0.23	22	0	0	0.51	7	0	0	2.55	96	0	0	
Oct	68	0	0	0.23	22	0	0	0.51	10	0	0	2.55	102	0	0	
Nov	69	0	0	0.23	22	0	0	0.51	13	0	0	2.55	104	0	0	
Annual Total:	819	1	0.1221		242	0	0		146	1	0.6849		1117	2	0.179	0.88

V. ANEMIA

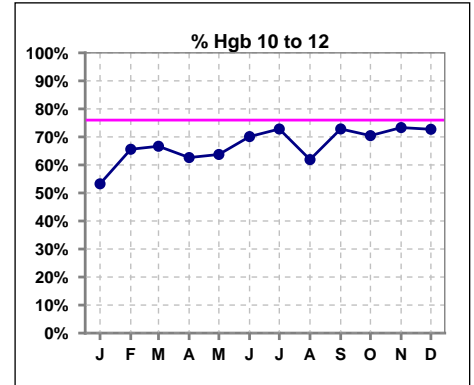
	Jan	Feb	Mar	Apr	May	Jun	Jul	Aug	Sep	Oct	Nov	Dec
# Hgb	92	93	93	91	91	87	92	84	81	88	90	88
# Hgb < 10	39	29	26	32	27	23	21	24	19	18	20	19
Pop. Mean	10.3	10.3	10.4	10.4	10.5	10.4	10.7	10.6	10.6	10.6	10.5	10.7
Std. Deviation	1.0	1.2	1.1	1.2	1.3	1.0	1.2	1.1	1.0	1.1	0.9	0.9
% Hgb < 10	42%	31%	28%	35%	30%	26%	23%	29%	23%	20%	22%	22%

Note: Excludes patients who received no ESA in month.



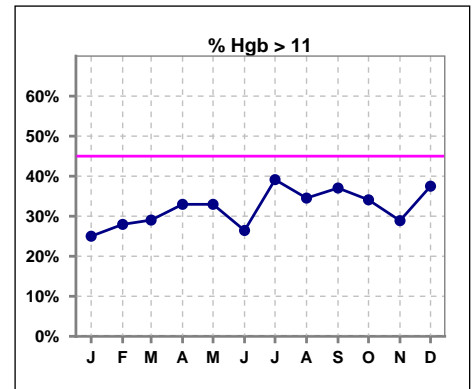
	Jan	Feb	Mar	Apr	May	Jun	Jul	Aug	Sep	Oct	Nov	Dec
# Hgb	92	93	93	91	91	87	92	84	81	88	90	88
# Hgb 10 to 12	49	61	62	57	58	61	67	52	59	62	66	64
Pop. Mean	10.3	10.3	10.4	10.4	10.5	10.4	10.7	10.6	10.6	10.6	10.5	10.7
Std. Deviation	1.0	1.2	1.1	1.2	1.3	1.0	1.2	1.1	1.0	1.1	0.9	0.9
% Hgb 10 to 12	53%	66%	67%	63%	64%	70%	73%	62%	73%	70%	73%	73%

Note: Excludes patients who received no ESA in month.



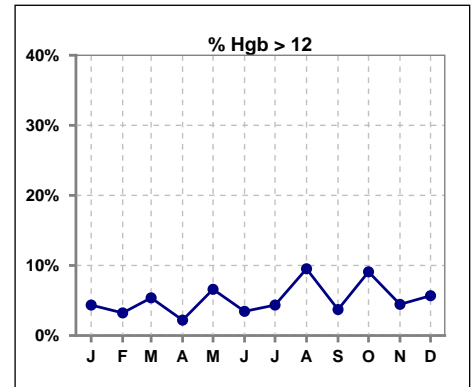
	Jan	Feb	Mar	Apr	May	Jun	Jul	Aug	Sep	Oct	Nov	Dec
# Hgb	92	93	93	91	91	87	92	84	81	88	90	88
# Hgb > 11	23	26	27	30	30	23	36	29	30	30	26	33
Pop. Mean	10.3	10.3	10.4	10.4	10.5	10.4	10.7	10.6	10.6	10.6	10.5	10.7
Std. Deviation	1.0	1.2	1.1	1.2	1.3	1.0	1.2	1.1	1.0	1.1	0.9	0.9
% Hgb > 11	25%	28%	29%	33%	33%	26%	39%	35%	37%	34%	29%	38%

Note: Excludes patients who received no ESA in month.



	Jan	Feb	Mar	Apr	May	Jun	Jul	Aug	Sep	Oct	Nov	Dec
# Hgb	92	93	93	91	91	87	92	84	81	88	90	88
# Hgb > 12	4	3	5	2	6	3	4	8	3	8	4	5
Pop. Mean	10.3	10.3	10.4	10.4	10.5	10.4	10.7	10.6	10.6	10.6	10.5	10.7
Std. Deviation	1.0	1.2	1.1	1.2	1.3	1.0	1.2	1.1	1.0	1.1	0.9	0.9
% Hgb > 12	4%	3%	5%	2%	7%	3%	4%	10%	4%	9%	4%	6%

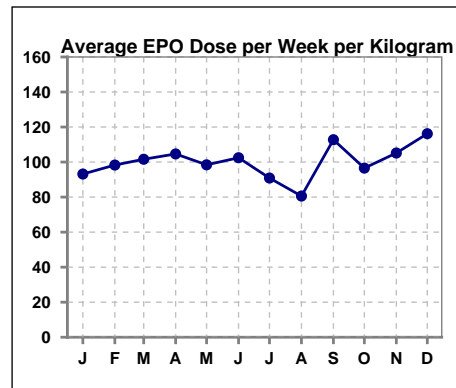
Note: Excludes patients who received no ESA in month.



V. ANEMIA - CONT.

Average EPO Dose per Week per Kilogram

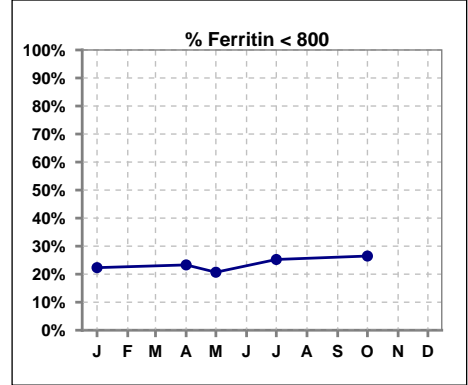
	Jan	Feb	Mar	Apr	May	Jun	Jul	Aug	Sep	Oct	Nov	Dec
# Average EPO	93.2	98.3	101.6	104.6	98.4	102.5	90.9	80.6	112.8	96.6	105.2	116.2



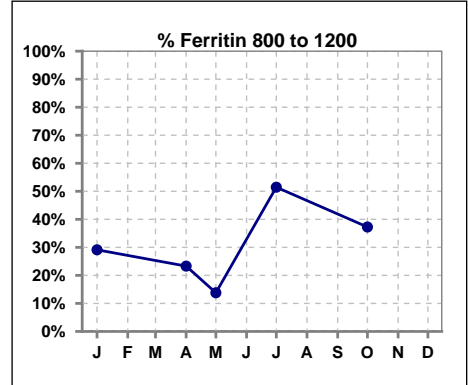
V. ANEMIA - CONT.

Iron Profile

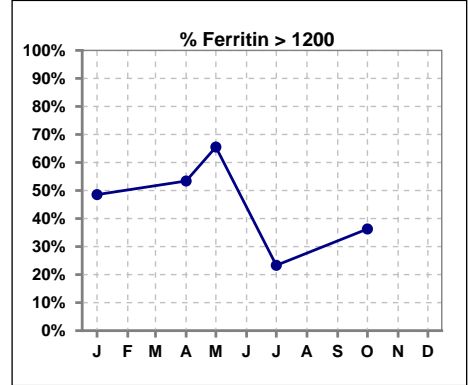
	Jan	Feb	Mar	Apr	May	Jun	Jul	Aug	Sep	Oct	Nov	Dec
# Ferritin	103			103	29		103			102		
# Ferritin < 800	23			24	6		26			27		
Pop. Mean	1184			1196	1393		1030			1133		
Std. Deviation	516			517	763		429			491		
% Ferritin < 800	22%			23%	21%		25%			26%		



	Jan	Feb	Mar	Apr	May	Jun	Jul	Aug	Sep	Oct	Nov	Dec
# Ferritin	103			103	29		103			102		
# Ferritin 800 to 1200	30			24	4		53			38		
Pop. Mean	1184			1196	1393		1030			1133		
Std. Deviation	516			517	763		429			491		
% Ferritin 800 to 1200	29%			23%	14%		51%			37%		

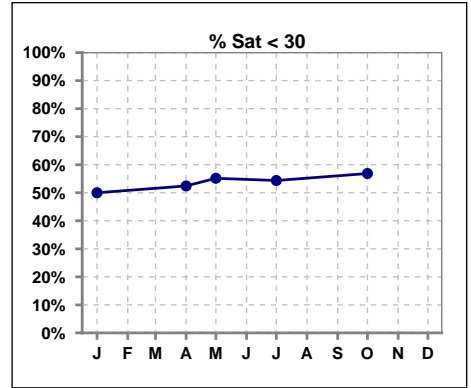


	Jan	Feb	Mar	Apr	May	Jun	Jul	Aug	Sep	Oct	Nov	Dec
# Ferritin	103			103	29		103			102		
# Ferritin > 1200	50			55	19		24			37		
Pop. Mean	1184			1196	1393		1030			1133		
Std. Deviation	516			517	763		429			491		
% Ferritin > 1200	49%			53%	66%		23%			36%		

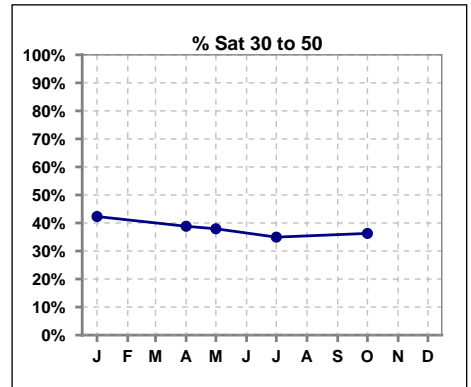


V. ANEMIA - CONT.

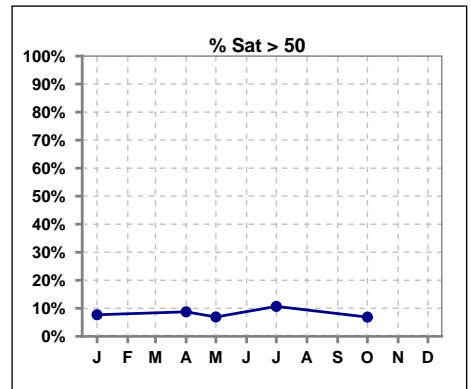
	Jan	Feb	Mar	Apr	May	Jun	Jul	Aug	Sep	Oct	Nov	Dec
# % Sat	104			103	29		103			102		
# % Sat < 30	52			54	16		56			58		
Pop. Mean	32			31	31		31			30		
Std. Deviation	15			16	17		15			14		
% % Sat < 30	50%			52%	55%		54%			57%		



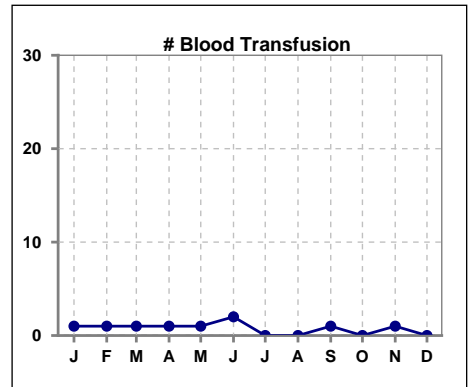
	Jan	Feb	Mar	Apr	May	Jun	Jul	Aug	Sep	Oct	Nov	Dec
# % Sat	104			103	29		103			102		
# % Sat 30 to 50	44			40	11		36			37		
Pop. Mean	32			31	31		31			30		
Std. Deviation	15			16	17		15			14		
% % Sat 30 to 50	42%			39%	38%		35%			36%		



	Jan	Feb	Mar	Apr	May	Jun	Jul	Aug	Sep	Oct	Nov	Dec
# % Sat	104			103	29		103			102		
# % Sat > 50	8			9	2		11			7		
Pop. Mean	32			31	31		31			30		
Std. Deviation	15			16	17		15			14		
% % Sat > 50	8%			9%	7%		11%			7%		



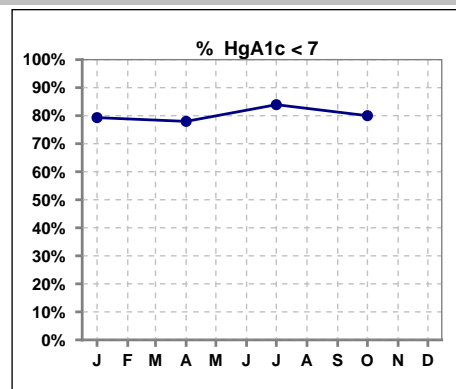
	Jan	Feb	Mar	Apr	May	Jun	Jul	Aug	Sep	Oct	Nov	Dec
# Patient	104	102	103	105	107	106	106	96	100	106	106	103
# Blood Transfusion	1	1	1	1	1	2	0	0	1	0	1	0



Methodology: a) All labs for 'Adequacy of Dialysis', 'Nutrition', 'Osteodystrophy', 'Anemia' and 'Diabetes' based on last value of month; b) BP's and #L processed are average of all values for month; c) Access data takes last access of month; d) Values for SGA and 'Infection Control' use most recent result.

VI. Diabetes

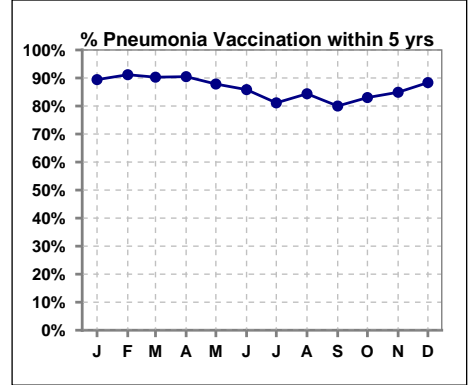
	Jan	Feb	Mar	Apr	May	Jun	Jul	Aug	Sep	Oct	Nov	Dec
# HgA1c	58			59			56			60		
# HgA1c < 7	46			46			47			48		
Pop. Mean	6.4			6.2			6.0			6.1		
Std. Deviation	1.16			1.09			0.90			1.07		
% HgA1c < 7	79%			78%			84%			80%		



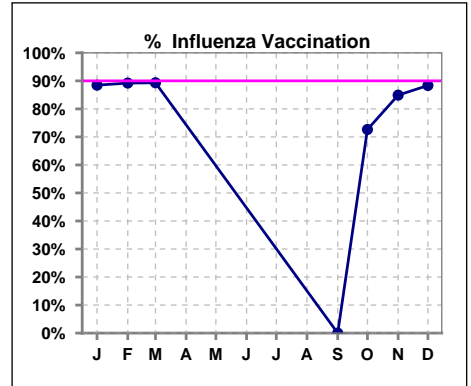
VII. Infection Control

Pneumonia vaccination within the past five years

	Jan	Feb	Mar	Apr	May	Jun	Jul	Aug	Sep	Oct	Nov	Dec
# Patient	104	102	103	105	107	106	106	96	100	106	106	103
# Pneumonia	93	93	93	95	94	91	86	81	80	88	90	91
% Pneumonia	89%	91%	90%	90%	88%	86%	81%	84%	80%	83%	85%	88%



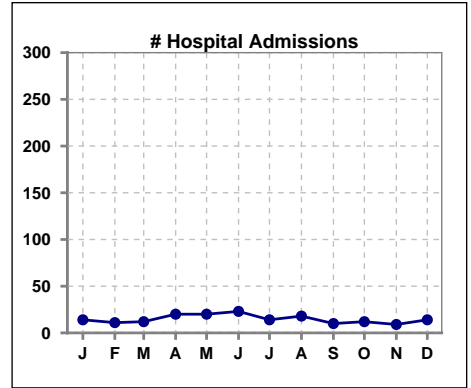
	Jan	Feb	Mar	Apr	May	Jun	Jul	Aug	Sep	Oct	Nov	Dec
# Patient	104	102	103						100	106	106	103
# Influenza	92	91	92						0	77	90	91
% Influenza	88%	89%	89%						0%	73%	85%	88%



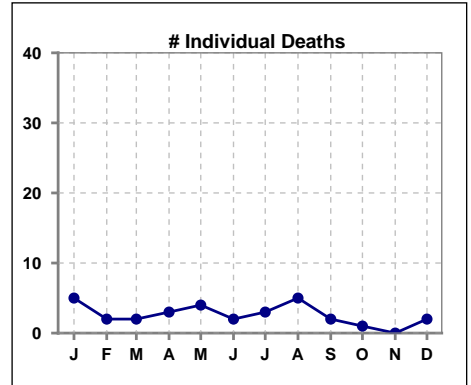
Methodology: a) All labs for 'Adequacy of Dialysis', 'Nutrition', 'Osteodystrophy', 'Anemia' and 'Diabetes' based on last value of month; b) BP's and #L processed are average of all values for month; c) Access data takes last access of month; d) Values for SGA and 'Infection Control' use most recent result.

VIII. Misc

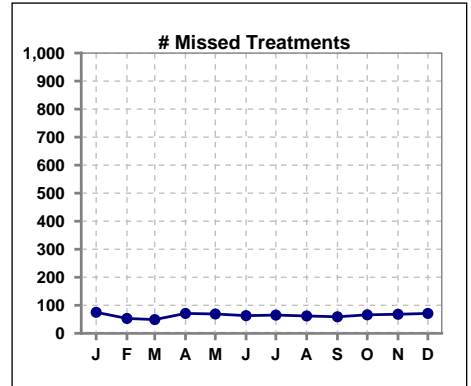
	Jan	Feb	Mar	Apr	May	Jun	Jul	Aug	Sep	Oct	Nov	Dec
# Patient	104	102	103	105	107	106	106	96	100	106	106	103
# Hospital Admissions	14	11	12	20	20	23	14	18	10	12	9	14



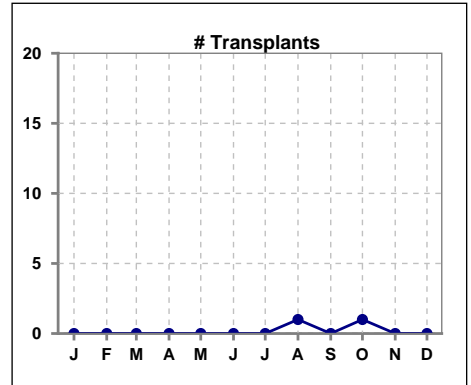
	Jan	Feb	Mar	Apr	May	Jun	Jul	Aug	Sep	Oct	Nov	Dec
# Patient	104	102	103	105	107	106	106	96	100	106	106	103
# Individual Deaths	5	2	2	3	4	2	3	5	2	1	0	2



	Jan	Feb	Mar	Apr	May	Jun	Jul	Aug	Sep	Oct	Nov	Dec
# Patient	104	102	103	105	107	106	106	96	100	106	106	103
# Missed Treatments	75	53	49	71	69	63	65	62	59	66	68	71



	Jan	Feb	Mar	Apr	May	Jun	Jul	Aug	Sep	Oct	Nov	Dec
# Patient	104	102	103	105	107	106	106	96	100	106	106	103
# Transplants	0	0	0	0	0	0	0	1	0	1	0	0



Methodology: a) All labs for 'Adequacy of Dialysis', 'Nutrition', 'Osteodystrophy', 'Anemia' and 'Diabetes' based on last value of month; b) BP's and #L processed are average of all values for month; c) Access data takes last access of month; d) Values for SGA and 'Infection Control' use most recent result.