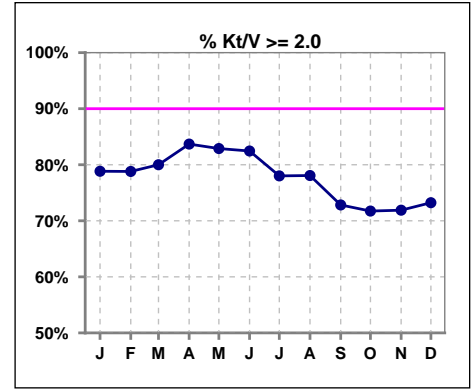
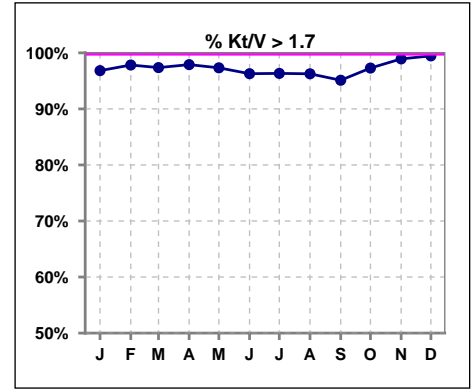


I. ADEQUACY OF DIALYSIS

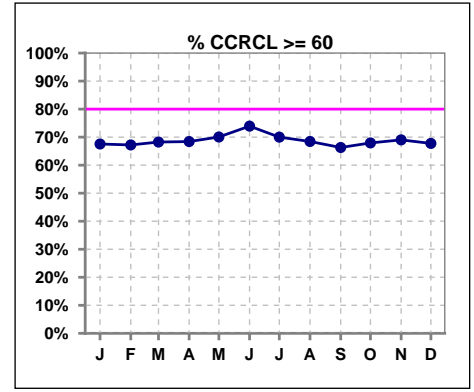
	Jan	Feb	Mar	Apr	May	Jun	Jul	Aug	Sep	Oct	Nov	Dec
# Kt/V - CA/CC PD	189	184	190	190	187	188	191	187	184	184	185	183
# Kt/V >= 2.0	149	145	152	159	155	155	149	146	134	132	133	134
Pop. Mean	2.36	2.38	2.38	2.39	2.36	2.38	2.33	2.31	2.27	2.27	2.29	2.30
Std. Deviation	0.51	0.52	0.51	0.50	0.47	0.48	0.47	0.46	0.45	0.42	0.47	0.46
% Kt/V >= 2.0	79%	79%	80%	84%	83%	82%	78%	78%	73%	72%	72%	73%



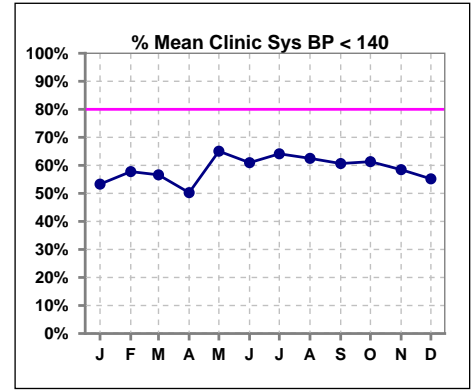
	Jan	Feb	Mar	Apr	May	Jun	Jul	Aug	Sep	Oct	Nov	Dec
# Kt/V - CA/CC PD	189	184	190	190	187	188	191	187	184	184	185	183
# Kt/V >= 1.7	183	180	185	186	182	181	184	180	175	179	183	182
Pop. Mean	2.36	2.38	2.38	2.39	2.36	2.38	2.33	2.31	2.27	2.27	2.29	2.30
Std. Deviation	0.51	0.52	0.51	0.50	0.47	0.48	0.47	0.46	0.45	0.42	0.47	0.46
% Kt/V >= 1.7	97%	98%	97%	98%	97%	96%	96%	96%	95%	97%	99%	99%



	Jan	Feb	Mar	Apr	May	Jun	Jul	Aug	Sep	Oct	Nov	Dec
# CRCL CA/CC PD	188	183	189	190	187	188	190	187	184	184	184	183
# CCRCL >= 60	127	123	129	130	131	139	133	128	122	125	127	124
Pop. Mean	78.33	78.49	79.71	79.90	79.00	80.79	78.58	77.50	76.52	75.58	76.13	77.35
Std. Deviation	29.09	29.72	30.75	31.64	29.58	30.93	30.05	27.93	27.81	26.67	26.57	28.87
% CCRCL >= 60	68%	67%	68%	68%	70%	74%	70%	68%	66%	68%	69%	68%



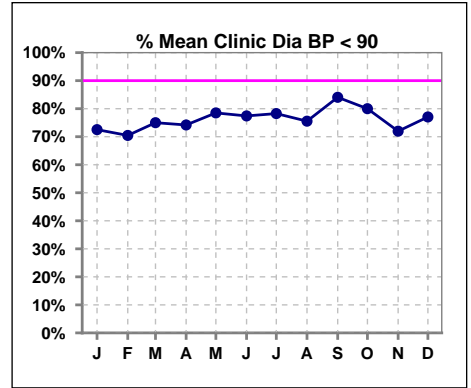
	Jan	Feb	Mar	Apr	May	Jun	Jul	Aug	Sep	Oct	Nov	Dec
# Mean Clinic Sys BP	182	180	189	187	186	187	184	184	183	181	183	183
# Sys BP < 140	97	104	107	94	121	114	118	115	111	111	107	101
Pop. Mean	139	138	138	139	133	133	132	133	137	135	138	137
Std. Deviation	25.7	28.1	27.3	27.6	24.5	23.4	25.8	24.2	26.2	25.1	25.2	26.6
% Sys BP <140	53%	58%	57%	50%	65%	61%	64%	63%	61%	61%	58%	55%



Methodology: a) Kt/V, CRCL and nPNa values are 4 month rolling mean of last value for each month, all other report lab results are based on last value of month; b) BP's are average of all values for month.

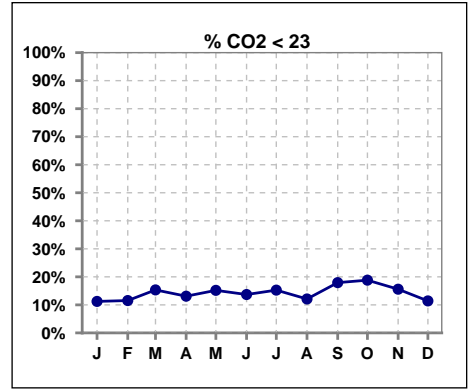
I. ADEQUACY OF DIALYSIS - CONT.

	Jan	Feb	Mar	Apr	May	Jun	Jul	Aug	Sep	Oct	Nov	Dec
# Mean Clinic Dia BP	182	176	188	186	186	186	184	184	182	180	182	183
# Dia BP < 90	132	124	141	138	146	144	144	139	153	144	131	141
Pop. Mean	81	81	81	80	79	79	77	79	79	79	80	79
Std. Deviation	15.4	14.3	13.9	13.4	14.1	13.5	13.3	13.7	13.5	13.1	14.2	14.8
% Dia BP < 90	73%	70%	75%	74%	78%	77%	78%	76%	84%	80%	72%	77%

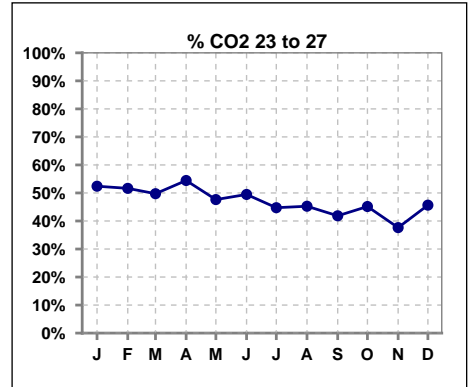


I. ADEQUACY OF DIALYSIS - CONT.

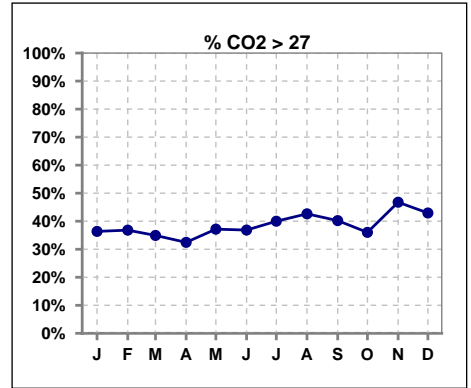
	Jan	Feb	Mar	Apr	May	Jun	Jul	Aug	Sep	Oct	Nov	Dec
# CO2	187	182	189	191	191	190	190	190	184	186	186	184
# CO2 < 23	21	21	29	25	29	26	29	23	33	35	29	21
Pop. Mean	26	26	26	26	26	26	26	27	26	26	26	26
Std. Deviation	3.23	2.99	3.21	3.12	3.23	3.37	3.25	3.23	3.61	3.54	3.42	3.35
% CO2 < 23	11%	12%	15%	13%	15%	14%	15%	12%	18%	19%	16%	11%



	Jan	Feb	Mar	Apr	May	Jun	Jul	Aug	Sep	Oct	Nov	Dec
# CO2	187	182	189	191	191	190	190	190	184	186	186	184
# CO2 23 to 27	98	94	94	104	91	94	85	86	77	84	70	84
Pop. Mean	26	26	26	26	26	26	26	27	26	26	26	26
Std. Deviation	3.23	2.99	3.21	3.12	3.23	3.37	3.25	3.23	3.61	3.54	3.42	3.35
% CO2 23 to 27	52%	52%	50%	54%	48%	49%	45%	45%	42%	45%	38%	46%



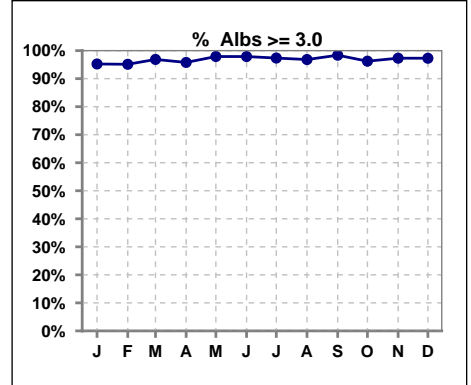
	Jan	Feb	Mar	Apr	May	Jun	Jul	Aug	Sep	Oct	Nov	Dec
# CO2	187	182	189	191	191	190	190	190	184	186	186	184
# CO2 > 27	68	67	66	62	71	70	76	81	74	67	87	79
Pop. Mean	26	26	26	26	26	26	26	27	26	26	26	26
Std. Deviation	3.23	2.99	3.21	3.12	3.23	3.37	3.25	3.23	3.61	3.54	3.42	3.35
% CO2 > 27	36%	37%	35%	32%	37%	37%	40%	43%	40%	36%	47%	43%



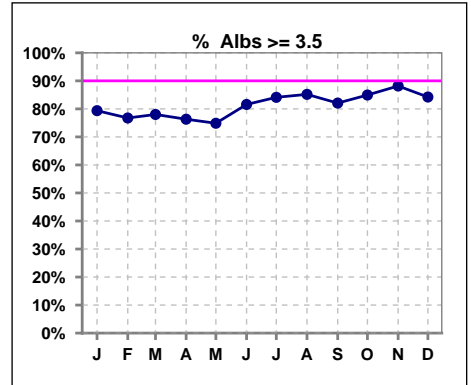
*Albumin values use BCG method - as of July 2001

II. NUTRITION

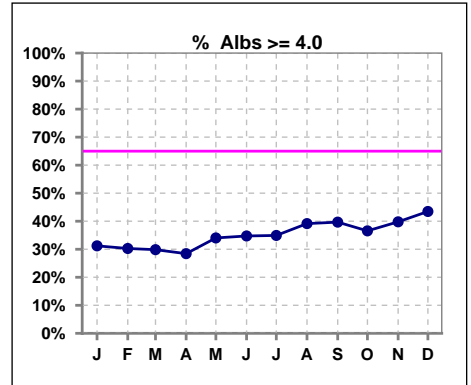
	Jan	Feb	Mar	Apr	May	Jun	Jul	Aug	Sep	Oct	Nov	Dec
# Albumin	189	185	191	190	191	190	189	189	184	186	186	184
# Albumin >= 3.0	180	176	185	182	187	186	184	183	181	179	181	179
Pop. Mean	3.7	3.7	3.7	3.7	3.8	3.8	3.8	3.8	3.8	3.8	3.9	3.8
Std. Deviation	0.45	0.43	0.39	0.42	0.42	0.40	0.39	0.40	0.39	0.42	0.41	0.44
% Alb >= 3.0	95%	95%	97%	96%	98%	98%	97%	97%	98%	96%	97%	97%



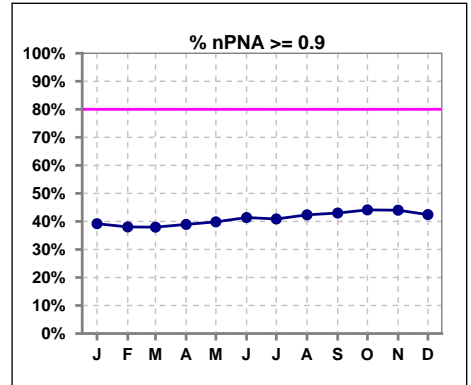
	Jan	Feb	Mar	Apr	May	Jun	Jul	Aug	Sep	Oct	Nov	Dec
# Albumin	189	185	191	190	191	190	189	189	184	186	186	184
# Albumin >= 3.5	150	142	149	145	143	155	159	161	151	158	164	155
Pop. Mean	3.7	3.7	3.7	3.7	3.8	3.8	3.8	3.8	3.8	3.8	3.9	3.8
Std. Deviation	0.45	0.43	0.39	0.42	0.42	0.40	0.39	0.40	0.39	0.42	0.41	0.44
% Alb >= 3.5	79%	77%	78%	76%	75%	82%	84%	85%	82%	85%	88%	84%



	Jan	Feb	Mar	Apr	May	Jun	Jul	Aug	Sep	Oct	Nov	Dec
# Albumin	189	185	191	190	191	190	189	189	184	186	186	184
# Albumin >= 4.0	59	56	57	54	65	66	66	74	73	68	74	80
Pop. Mean	3.7	3.7	3.7	3.7	3.8	3.8	3.8	3.8	3.8	3.8	3.9	3.8
Std. Deviation	0.45	0.43	0.39	0.42	0.42	0.40	0.39	0.40	0.39	0.42	0.41	0.44
% Alb >= 4.0	31%	30%	30%	28%	34%	35%	35%	39%	40%	37%	40%	43%



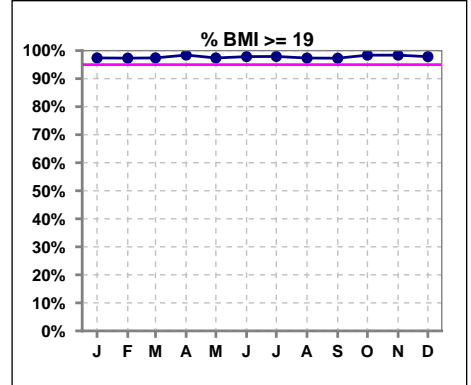
	Jan	Feb	Mar	Apr	May	Jun	Jul	Aug	Sep	Oct	Nov	Dec
# nPNA	148	142	137	131	123	116	115	111	107	102	100	99
# nPNA >= 0.9	58	54	52	51	49	48	47	47	46	45	44	42
Pop. Mean	0.9	0.9	0.9	0.9	0.9	0.9	0.9	0.9	0.9	0.9	0.9	0.9
Std. Deviation	0.28	0.26	0.26	0.27	0.27	0.27	0.26	0.26	0.26	0.26	0.26	0.26
% nPNA >= 0.9	39%	38%	38%	39%	40%	41%	41%	42%	43%	44%	44%	42%



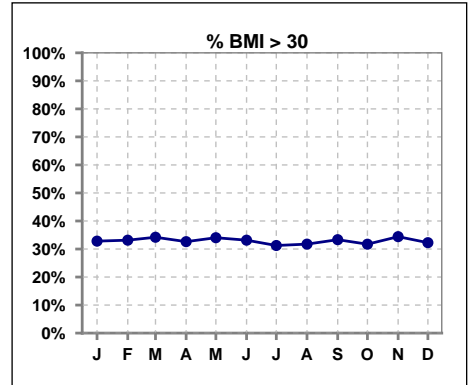
*Albumin values use BCG method - as of July 2001

II. NUTRITION - CONT.

	Jan	Feb	Mar	Apr	May	Jun	Jul	Aug	Sep	Oct	Nov	Dec
# BMI	192	187	193	190	191	187	192	189	186	186	186	186
# BMI >= 19	187	182	188	187	186	183	188	184	181	183	183	182
Pop. Mean	28	29	28	28	29	28	28	28	29	29	29	28
Std. Deviation	5.8	6.2	6.0	5.9	6.1	6.0	6.2	6.3	6.5	6.2	6.3	6.2
% BMI >= 19	97%	97%	97%	98%	97%	98%	98%	97%	97%	98%	98%	98%



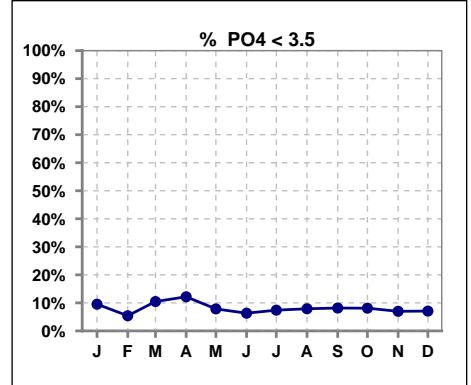
	Jan	Feb	Mar	Apr	May	Jun	Jul	Aug	Sep	Oct	Nov	Dec
# BMI	192	187	193	190	191	187	192	189	186	186	186	186
# BMI > 30	63	62	66	62	65	62	60	60	62	59	64	60
Pop. Mean	28	29	28	28	29	28	28	28	29	29	29	28
Std. Deviation	5.8	6.2	6.0	5.9	6.1	6.0	6.2	6.3	6.5	6.2	6.3	6.2
% BMI > 30	33%	33%	34%	33%	34%	33%	31%	32%	33%	32%	34%	32%



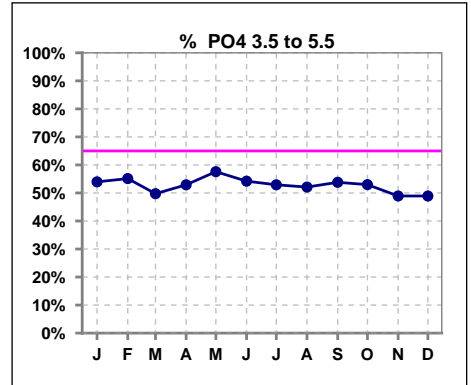
Lab methodology for PTH changed January 2012

III. OSTEODYSTROPHY

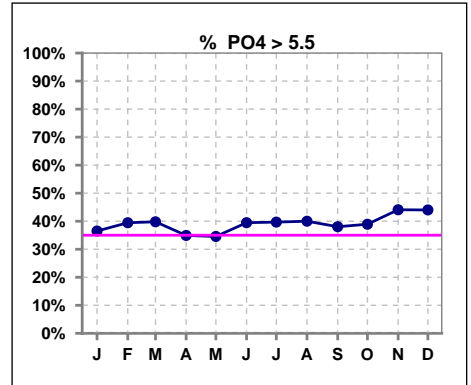
	Jan	Feb	Mar	Apr	May	Jun	Jul	Aug	Sep	Oct	Nov	Dec
# PO4	189	185	191	189	191	190	189	190	184	185	186	184
# PO4 < 3.5	18	10	20	23	15	12	14	15	15	15	13	13
Pop. Mean	5.2	5.3	5.3	5.1	5.3	5.3	5.3	5.4	5.4	5.4	5.5	5.5
Std. Deviation	1.47	1.39	1.59	1.45	1.48	1.43	1.47	1.49	1.57	1.55	1.61	1.56
% PO4 < 3.5	10%	5%	10%	12%	8%	6%	7%	8%	8%	8%	7%	7%



	Jan	Feb	Mar	Apr	May	Jun	Jul	Aug	Sep	Oct	Nov	Dec
# PO4	189	185	191	189	191	190	189	190	184	185	186	184
# PO4 3.5 to 5.5	102	102	95	100	110	103	100	99	99	98	91	90
Pop. Mean	5.2	5.3	5.3	5.1	5.3	5.3	5.3	5.4	5.4	5.4	5.5	5.5
Std. Deviation	1.47	1.39	1.59	1.45	1.48	1.43	1.47	1.49	1.57	1.55	1.61	1.56
% PO4 3.5 to 5.5	54%	55%	50%	53%	58%	54%	53%	52%	54%	53%	49%	49%



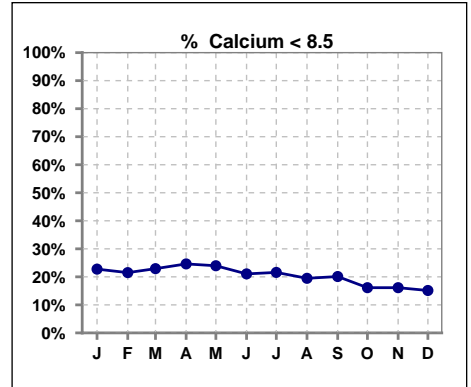
	Jan	Feb	Mar	Apr	May	Jun	Jul	Aug	Sep	Oct	Nov	Dec
# PO4	189	185	191	189	191	190	189	190	184	185	186	184
# PO4 > 5.5	69	73	76	66	66	75	75	76	70	72	82	81
Pop. Mean	5.2	5.3	5.3	5.1	5.3	5.3	5.3	5.4	5.4	5.4	5.5	5.5
Std. Deviation	1.47	1.39	1.59	1.45	1.48	1.43	1.47	1.49	1.57	1.55	1.61	1.56
% PO4 > 5.5	37%	39%	40%	35%	35%	39%	40%	40%	38%	39%	44%	44%



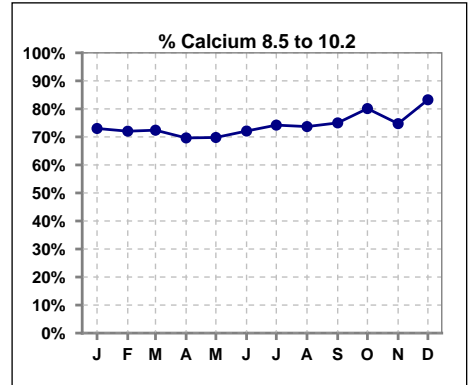
Lab methodology for PTH changed January 2012

III. OSTEODYSTROPHY - CONT.

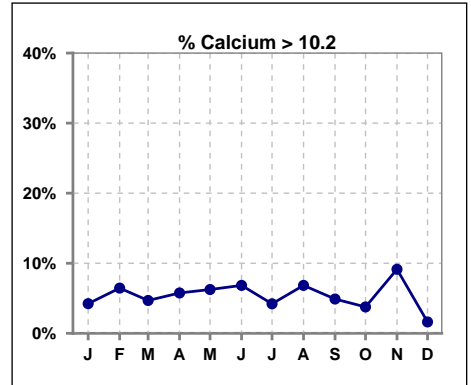
	Jan	Feb	Mar	Apr	May	Jun	Jul	Aug	Sep	Oct	Nov	Dec
# Calcium	189	186	192	191	192	190	190	190	184	186	186	185
# Calcium < 8.5	43	40	44	47	46	40	41	37	37	30	30	28
Pop. Mean	8.9	9.1	9.0	9.0	9.0	9.1	9.0	9.1	9.1	9.1	9.2	9.1
Std. Deviation	0.77	0.77	0.73	0.79	0.80	0.81	0.80	0.83	0.79	0.77	0.80	0.72
% Calcium < 8.5	23%	22%	23%	25%	24%	21%	22%	19%	20%	16%	16%	15%



	Jan	Feb	Mar	Apr	May	Jun	Jul	Aug	Sep	Oct	Nov	Dec
# Calcium	189	186	192	191	192	190	190	190	184	186	186	185
# Calcium 8.5 to 10.2	138	134	139	133	134	137	141	140	138	149	139	154
Pop. Mean	8.9	9.1	9.0	9.0	9.0	9.1	9.0	9.1	9.1	9.1	9.2	9.1
Std. Deviation	0.77	0.77	0.73	0.79	0.80	0.81	0.80	0.83	0.79	0.77	0.80	0.72
% Calcium 8.5 to 10.2	73%	72%	72%	70%	70%	72%	74%	74%	75%	80%	75%	83%



	Jan	Feb	Mar	Apr	May	Jun	Jul	Aug	Sep	Oct	Nov	Dec
# Calcium	189	186	192	191	192	190	190	190	184	186	186	185
# Calcium > 10.2	8	12	9	11	12	13	8	13	9	7	17	3
Pop. Mean	8.9	9.1	9.0	9.0	9.0	9.1	9.0	9.1	9.1	9.1	9.2	9.1
Std. Deviation	0.77	0.77	0.73	0.79	0.80	0.81	0.80	0.83	0.79	0.77	0.80	0.72
% Calcium > 10.2	4%	6%	5%	6%	6%	7%	4%	7%	5%	4%	9%	2%

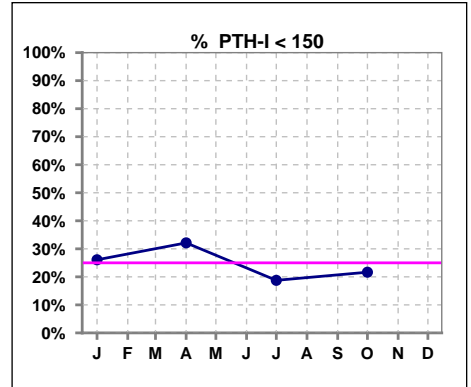


Methodology: a) Kt/V, CRCL and nPNa values are 4 month rolling mean of last value for each month, all other report lab results are based on last value of month; b) BP's are average of all values for month.

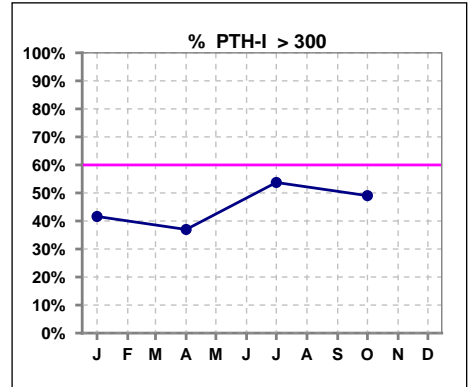
Lab methodology for PTH changed January 2012

III. OSTEODYSTROPHY - CONT.

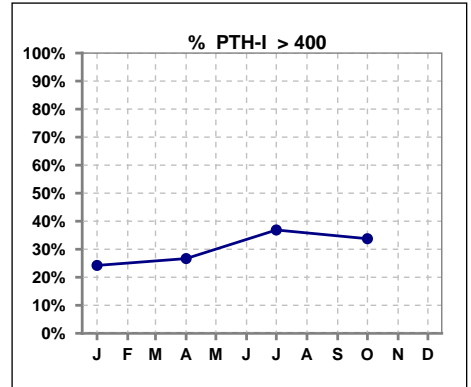
	Jan	Feb	Mar	Apr	May	Jun	Jul	Aug	Sep	Oct	Nov	Dec
# PTH-I	161			165			160			157		
# PTH-I < 150	42			53			30			34		
Pop. Mean	321			306			395			346		
Std. Deviation	251			258			304			261		
% PTH-I < 150	26%			32%			19%			22%		



	Jan	Feb	Mar	Apr	May	Jun	Jul	Aug	Sep	Oct	Nov	Dec
# PTH-I	161			165			160			157		
# PTH-I > 300	67			61			86			77		
Pop. Mean	321			306			395			346		
Std. Deviation	251			258			304			261		
% PTH-I > 300	42%			37%			54%			49%		



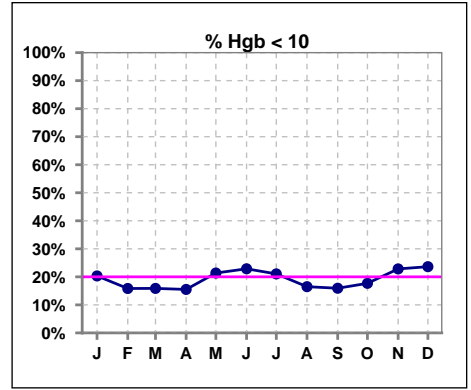
	Jan	Feb	Mar	Apr	May	Jun	Jul	Aug	Sep	Oct	Nov	Dec
# PTH-I	161			165			160			157		
# PTH-I > 400	39			44			59			53		
Pop. Mean	321			306			395			346		
Std. Deviation	251			258			304			261		
% PTH-I > 400	24%			27%			37%			34%		



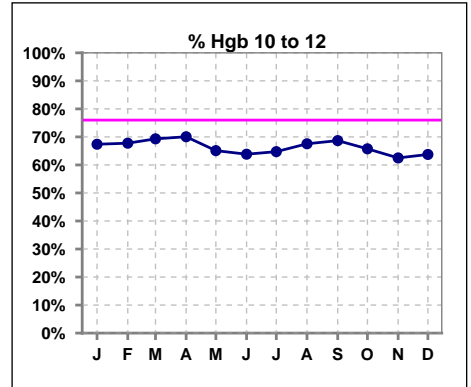
Methodology: a) Kt/V, CRCL and nPNa values are 4 month rolling mean of last value for each month, all other report lab results are based on last value of month; b) BP's are average of all values for month.

IV. ANEMIA

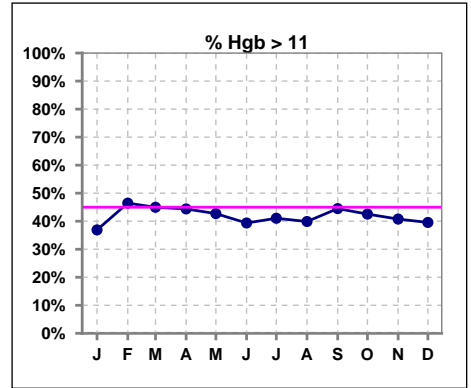
	Jan	Feb	Mar	Apr	May	Jun	Jul	Aug	Sep	Oct	Nov	Dec
# Hgb	187	183	189	187	192	188	190	188	182	181	184	182
# Hgb < 10	38	29	30	29	41	43	40	31	29	32	42	43
Pop. Mean	10.8	11.0	10.9	10.9	10.8	10.7	10.8	10.9	10.9	10.9	10.8	10.8
Std. Deviation	1.3	1.3	1.3	1.3	1.3	1.3	1.4	1.3	1.2	1.2	1.3	1.3
% Hgb < 10	20%	16%	16%	16%	21%	23%	21%	16%	16%	18%	23%	24%



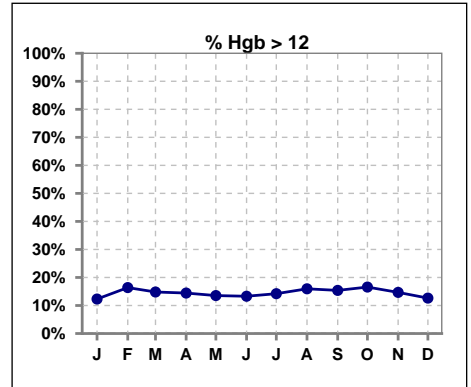
	Jan	Feb	Mar	Apr	May	Jun	Jul	Aug	Sep	Oct	Nov	Dec
# Hgb	187	183	189	187	192	188	190	188	182	181	184	182
# Hgb 10 to 12	126	124	131	131	125	120	123	127	125	119	115	116
Pop. Mean	10.8	11.0	10.9	10.9	10.8	10.7	10.8	10.9	10.9	10.9	10.8	10.8
Std. Deviation	1.3	1.3	1.3	1.3	1.3	1.3	1.4	1.3	1.2	1.2	1.3	1.3
% Hgb 10 to 12	67%	68%	69%	70%	65%	64%	65%	68%	69%	66%	63%	64%



	Jan	Feb	Mar	Apr	May	Jun	Jul	Aug	Sep	Oct	Nov	Dec
# Hgb	187	183	189	187	192	188	190	188	182	181	184	182
# Hgb > 11	69	85	85	83	82	74	78	75	81	77	75	72
Pop. Mean	10.8	11.0	10.9	10.9	10.8	10.7	10.8	10.9	10.9	10.9	10.8	10.8
Std. Deviation	1.3	1.3	1.3	1.3	1.3	1.3	1.4	1.3	1.2	1.2	1.3	1.3
% Hgb > 11	37%	46%	45%	44%	43%	39%	41%	40%	45%	43%	41%	40%



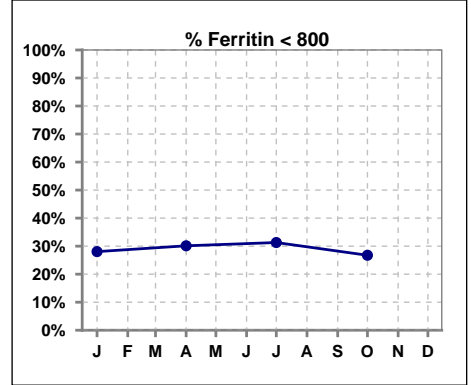
	Jan	Feb	Mar	Apr	May	Jun	Jul	Aug	Sep	Oct	Nov	Dec
# Hgb	187	183	189	187	192	188	190	188	182	181	184	182
# Hgb > 12	23	30	28	27	26	25	27	30	28	30	27	23
Pop. Mean	10.8	11.0	10.9	10.9	10.8	10.7	10.8	10.9	10.9	10.9	10.8	10.8
Std. Deviation	1.3	1.3	1.3	1.3	1.3	1.3	1.4	1.3	1.2	1.2	1.3	1.3
% Hgb > 12	12%	16%	15%	14%	14%	13%	14%	16%	15%	17%	15%	13%



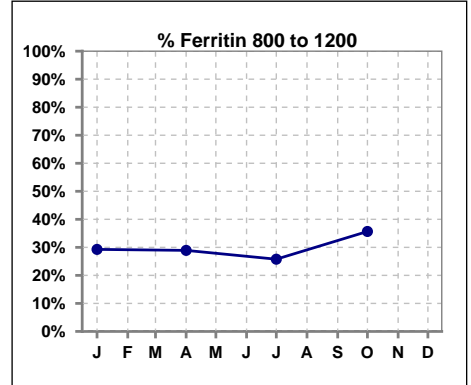
IV. ANEMIA - CONT.

Iron Profile

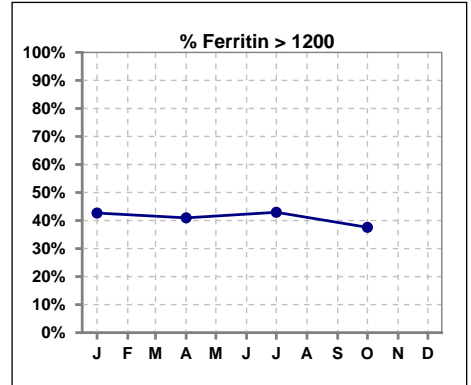
	Jan	Feb	Mar	Apr	May	Jun	Jul	Aug	Sep	Oct	Nov	Dec
# Ferritin	164			166			163			157		
# Ferritin < 800	46			50			51			42		
Pop. Mean	1194			1173			1136			1119		
Std. Deviation	791			725			661			695		
% Ferritin < 800	28%			30%			31%			27%		



	Jan	Feb	Mar	Apr	May	Jun	Jul	Aug	Sep	Oct	Nov	Dec
# Ferritin	164			166			163			157		
# Ferritin 800 to 1200	48			48			42			56		
Pop. Mean	1194			1173			1136			1119		
Std. Deviation	791			725			661			695		
% Ferritin 800 to 1200	29%			29%			26%			36%		

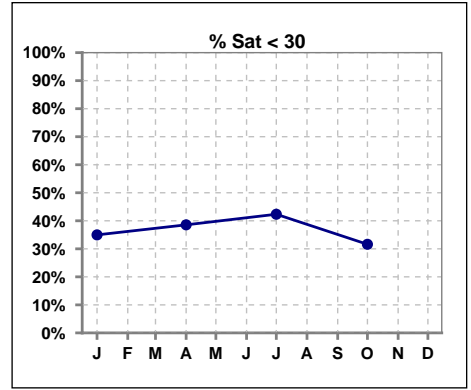


	Jan	Feb	Mar	Apr	May	Jun	Jul	Aug	Sep	Oct	Nov	Dec
# Ferritin	164			166			163			157		
# Ferritin > 1200	70			68			70			59		
Pop. Mean	1194			1173			1136			1119		
Std. Deviation	791			725			661			695		
% Ferritin > 1200	43%			41%			43%			38%		

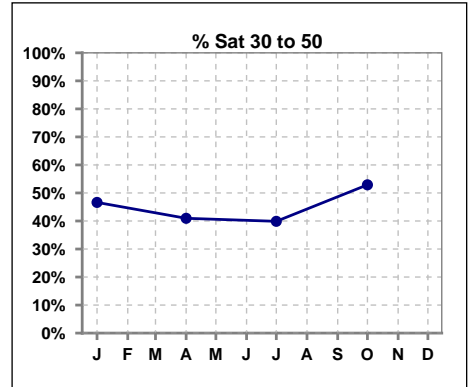


IV. ANEMIA - CONT.

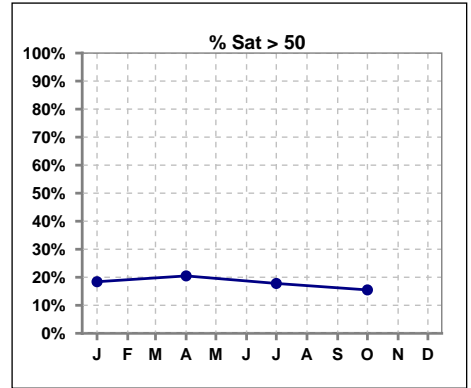
	Jan	Feb	Mar	Apr	May	Jun	Jul	Aug	Sep	Oct	Nov	Dec
# % Sat	163			166			163			155		
# % Sat < 30	57			64			69			49		
Pop. Mean	38			38			37			38		
Std. Deviation	19			20			20			19		
% % Sat < 30	35%			39%			42%			32%		



	Jan	Feb	Mar	Apr	May	Jun	Jul	Aug	Sep	Oct	Nov	Dec
# % Sat	163			166			163			155		
# % Sat 30 to 50	76			68			65			82		
Pop. Mean	38			38			37			38		
Std. Deviation	19			20			20			19		
% Sat% 30 to 50	47%			41%			40%			53%		

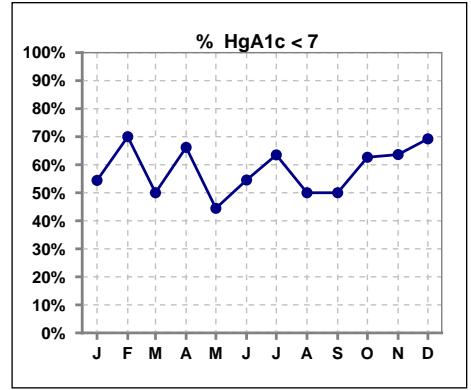


	Jan	Feb	Mar	Apr	May	Jun	Jul	Aug	Sep	Oct	Nov	Dec
# % Sat	163			166			163			155		
# % Sat > 50	30			34			29			24		
Pop. Mean	38			38			37			38		
Std. Deviation	19			20			20			19		
% Sat% > 50	18%			20%			18%			15%		



V. Diabetes

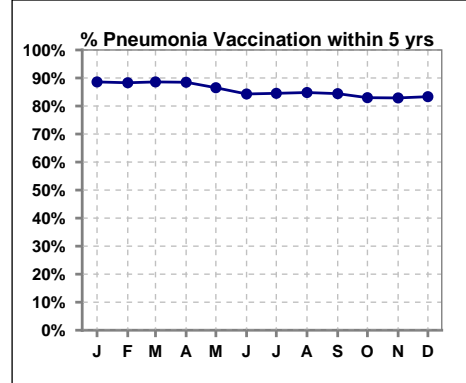
	Jan	Feb	Mar	Apr	May	Jun	Jul	Aug	Sep	Oct	Nov	Dec
# HgA1c	68	10	10	71	9	11	74	8	10	75	11	13
# HgA1c < 7	37	7	5	47	4	6	47	4	5	47	7	9
Pop. Mean	7.0	6.6	6.7	6.9	7.2	6.7	6.7	6.8	7.0	6.7	6.8	6.4
Std. Deviation	1.30	1.12	1.13	1.22	1.48	1.46	1.08	0.84	1.06	1.19	1.22	0.96
% HgA1c < 7	54%	70%	50%	66%	44%	55%	64%	50%	50%	63%	64%	69%



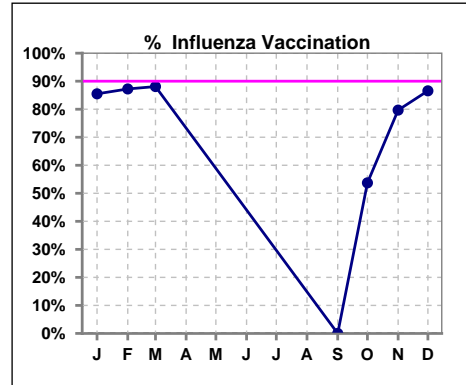
VI. Infection Control

Pneumonia vaccination within the past five years

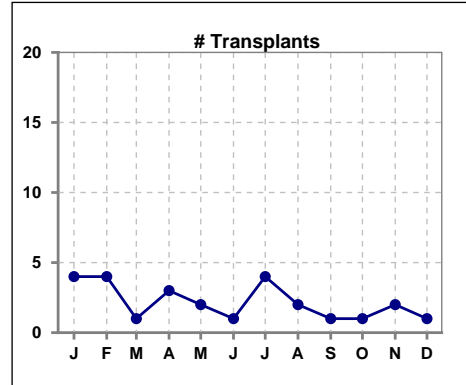
	Jan	Feb	Mar	Apr	May	Jun	Jul	Aug	Sep	Oct	Nov	Dec
# Patient	193	188	193	191	193	191	194	191	186	188	187	186
# Pneumonia	171	166	171	169	167	161	164	162	157	156	155	155
% Pneumonia	89%	88%	89%	88%	87%	84%	85%	85%	84%	83%	83%	83%



	Jan	Feb	Mar	Apr	May	Jun	Jul	Aug	Sep	Oct	Nov	Dec
# Patient	193	188	193						186	188	187	186
# Influenza	165	164	170						0	101	149	161
% Influenza	85%	87%	88%						0%	54%	80%	87%



	Jan	Feb	Mar	Apr	May	Jun	Jul	Aug	Sep	Oct	Nov	Dec
# Patient	193	188	193	191	193	191	194	191	186	188	187	186
# Transplants	4	4	1	3	2	1	4	2	1	1	2	1



Exit Site Infection Rate

	Jan	Feb	Mar	Apr	May	Jun	Jul	Aug	Sep	Oct	Nov	Dec
Current Month	69.17	90.93	68.74	50.04	68.45	49.94	103.07	40.91	39.18	50.32	192.54	200.46
Rolling Year-to-date	0.10	0.10	0.10	0.11	0.12	0.12	0.13	0.15	0.17	0.18	0.18	0.18

VI. Infection Control - CONT.

Peritonitis Infection Rate

	Jan	Feb	Mar	Apr	May	Jun	Jul	Aug	Sep	Oct	Nov	Dec
Current Month	51.87	25.98	206.21	20.02	25.67	33.29	29.45	25.57	27.99	40.26	64.18	25.06
Rolling Year-to-date	0.42	0.43	0.39	0.40	0.41	0.39	0.39	0.39	0.38	0.37	0.36	0.37