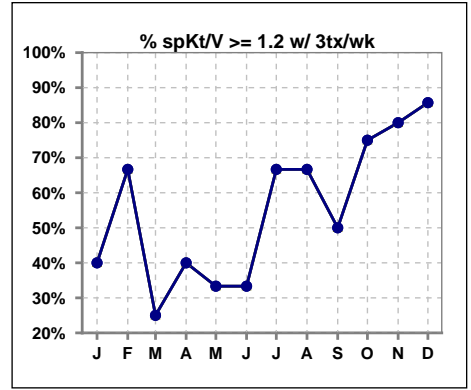
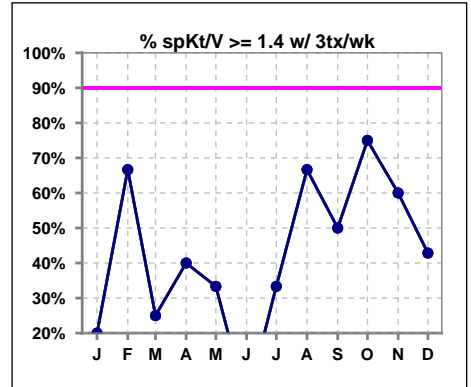


I. ADEQUACY OF DIALYSIS

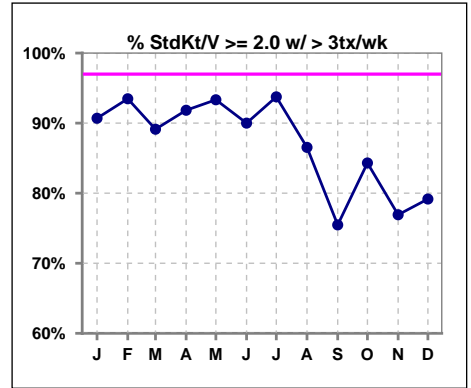
	Jan	Feb	Mar	Apr	May	Jun	Jul	Aug	Sep	Oct	Nov	Dec
# spKt/V w/3tx/wk	5	3	4	5	3	3	3	3	4	4	5	7
# spKt/V >=1.2 w/3tx/wk	2	2	1	2	1	1	2	2	2	3	4	6
Pop. Mean	1.10	1.29	1.00	1.10	0.98	0.97	1.32	1.28	1.10	1.38	1.39	1.32
Std. Deviation	0.24	0.47	0.32	0.46	0.42	0.35	0.58	0.38	0.55	0.41	0.28	0.26
% >=1.2 w/3tx/wk	40%	67%	25%	40%	33%	33%	67%	67%	50%	75%	80%	86%



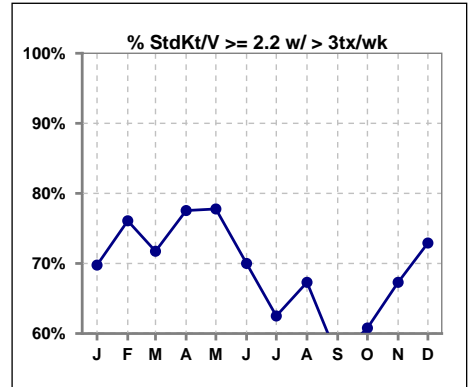
	Jan	Feb	Mar	Apr	May	Jun	Jul	Aug	Sep	Oct	Nov	Dec
# spKt/V w/3tx/wk	5	3	4	5	3	3	3	3	4	4	5	7
# spKt/V >=1.4 w/3tx/wk	1	2	1	2	1	0	1	2	2	3	3	3
Pop. Mean	1.10	1.29	1.00	1.10	0.98	0.97	1.32	1.28	1.10	1.38	1.39	1.32
Std. Deviation	0.24	0.47	0.32	0.46	0.42	0.35	0.58	0.38	0.55	0.41	0.28	0.26
% >=1.4 w/3tx/wk	20%	67%	25%	40%	33%	0%	33%	67%	50%	75%	60%	43%



	Jan	Feb	Mar	Apr	May	Jun	Jul	Aug	Sep	Oct	Nov	Dec
# StdKt/V w/>3tx/wk	43	46	46	49	45	50	48	52	53	51	52	48
# >= 2.0 w/>3tx/wk	39	43	41	45	42	45	45	45	40	43	40	38
Pop. Mean	2.33	2.38	2.39	2.42	2.42	2.35	2.38	2.38	2.28	2.32	2.29	2.31
Std. Deviation	0.28	0.27	0.34	0.32	0.35	0.35	0.35	0.49	0.38	0.41	0.45	0.35
% >= 2.0 w/>3tx/wk	91%	93%	89%	92%	93%	90%	94%	87%	75%	84%	77%	79%



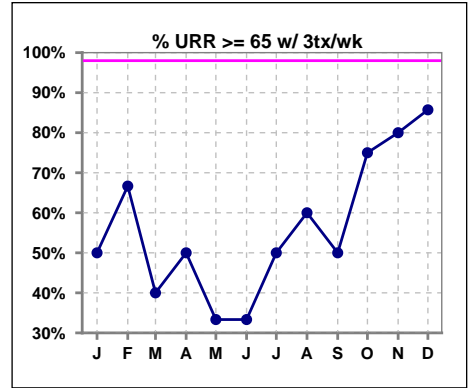
	Jan	Feb	Mar	Apr	May	Jun	Jul	Aug	Sep	Oct	Nov	Dec
# StdKt/V w/>3tx/wk	43	46	46	49	45	50	48	52	53	51	52	48
# >= 2.2 w/>3tx/wk	30	35	33	38	35	35	30	35	30	31	35	35
Pop. Mean	2.33	2.38	2.39	2.42	2.42	2.35	2.38	2.38	2.28	2.32	2.29	2.31
Std. Deviation	0.28	0.27	0.34	0.32	0.35	0.35	0.35	0.49	0.38	0.41	0.45	0.35
% >= 2.2 w/>3tx/wk	70%	76%	72%	78%	78%	70%	63%	67%	57%	61%	67%	73%



Methodology: a) All labs for 'Adequacy of Dialysis', 'Nutrition', 'Osteodystrophy' and 'Anemia' based on last value of month; b) Access data takes last access of month; c) Values for 'Infection Control' uses most recent result.

I. ADEQUACY OF DIALYSIS - CONT.

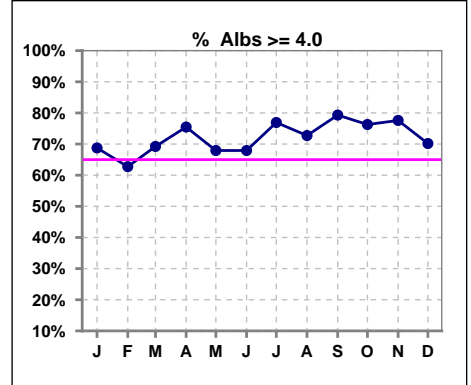
	Jan	Feb	Mar	Apr	May	Jun	Jul	Aug	Sep	Oct	Nov	Dec
# URR w/ 3tx/wk	4	3	5	4	3	3	4	5	4	4	5	7
# URR>=65 w/ 3tx/wk	2	2	2	2	1	1	2	3	2	3	4	6
Pop. Mean	62	64	59	60	50	54	59	63	57	67	69	67
Std. Deviation	8.63	18.65	14.08	16.13	18.87	14.50	18.92	20.62	21.28	16.24	10.66	10.85
% URR>=65 w/ 3tx/wk	50%	67%	40%	50%	33%	33%	50%	60%	50%	75%	80%	86%



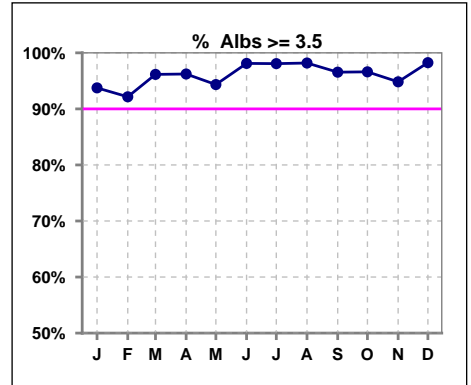
*Albumin values use BCG method - as of July 2001

II. NUTRITION

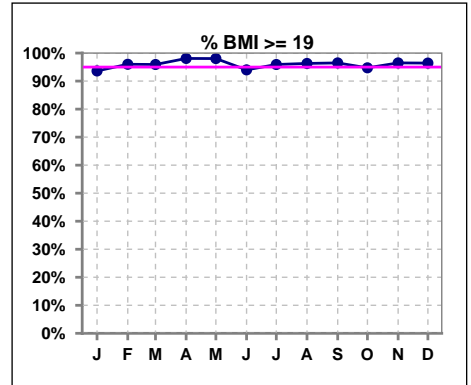
	Jan	Feb	Mar	Apr	May	Jun	Jul	Aug	Sep	Oct	Nov	Dec
# Albumin	48	51	52	53	53	53	52	55	58	59	58	57
# Albumin >= 4.0	33	32	36	40	36	36	40	40	46	45	45	40
Pop. Mean	4.1	4.0	4.1	4.1	4.1	4.2	4.2	4.1	4.1	4.2	4.2	4.2
Std. Deviation	0.45	0.42	0.35	0.39	0.39	0.37	0.34	0.39	0.36	0.37	0.40	0.41
% Alb >= 4.0	69%	63%	69%	75%	68%	68%	77%	73%	79%	76%	78%	70%



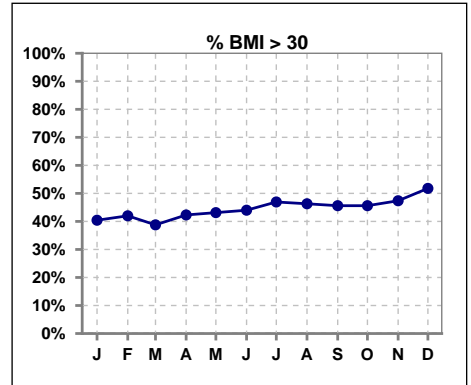
	Jan	Feb	Mar	Apr	May	Jun	Jul	Aug	Sep	Oct	Nov	Dec
# Albumin	48	51	52	53	53	53	52	55	58	59	58	57
# Albumin >= 3.5	45	47	50	51	50	52	51	54	56	57	55	56
Pop. Mean	4.1	4.0	4.1	4.1	4.1	4.2	4.2	4.1	4.1	4.2	4.2	4.2
Std. Deviation	0.45	0.42	0.35	0.39	0.39	0.37	0.34	0.39	0.36	0.37	0.40	0.41
% Alb >= 3.5	94%	92%	96%	96%	94%	98%	98%	98%	97%	97%	95%	98%



	Jan	Feb	Mar	Apr	May	Jun	Jul	Aug	Sep	Oct	Nov	Dec
# BMI	47	50	49	52	51	50	49	54	57	57	57	56
# BMI >= 19	44	48	47	51	50	47	47	52	55	54	55	54
Pop. Mean	30	30	29	30	30	30	31	31	30	30	30	31
Std. Deviation	7.7	7.6	7.8	8.5	8.5	8.3	8.0	7.6	7.5	7.7	7.6	8.2
% BMI >= 19	94%	96%	96%	98%	98%	94%	96%	96%	96%	95%	96%	96%



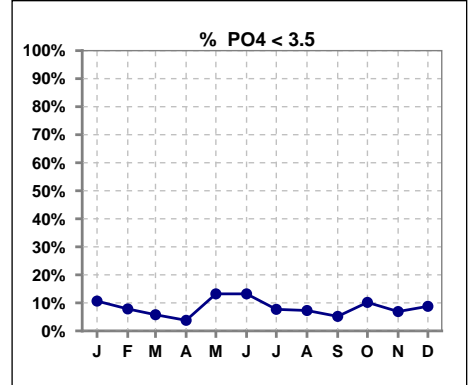
	Jan	Feb	Mar	Apr	May	Jun	Jul	Aug	Sep	Oct	Nov	Dec
# BMI	47	50	49	52	51	50	49	54	57	57	57	56
# BMI > 30	19	21	19	22	22	22	23	25	26	26	27	29
Pop. Mean	30	30	29	30	30	30	31	31	30	30	30	31
Std. Deviation	7.7	7.6	7.8	8.5	8.5	8.3	8.0	7.6	7.5	7.7	7.6	8.2
% BMI > 30	40%	42%	39%	42%	43%	44%	47%	46%	46%	46%	47%	52%



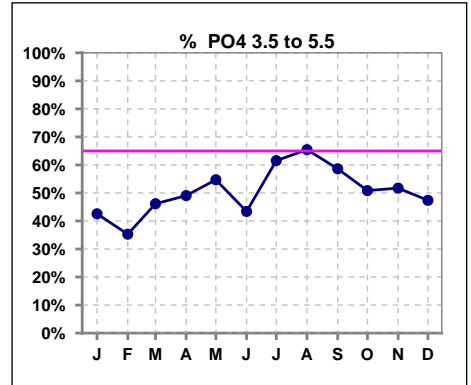
Lab methodology for PTH changed January 2012

III. OSTEODYSTROPHY

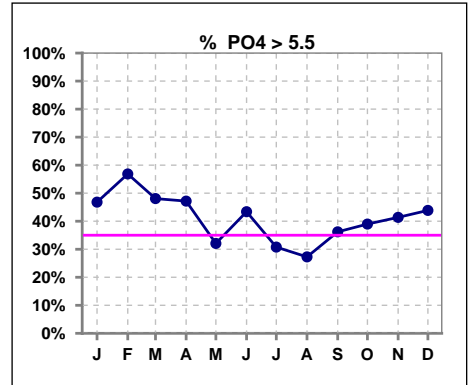
	Jan	Feb	Mar	Apr	May	Jun	Jul	Aug	Sep	Oct	Nov	Dec
# PO4	47	51	52	53	53	53	52	55	58	59	58	57
# PO4 < 3.5	5	4	3	2	7	7	4	4	3	6	4	5
Pop. Mean	5.5	5.7	5.7	5.6	5.2	5.2	5.2	5.2	5.3	5.4	5.4	5.4
Std. Deviation	1.77	1.81	1.75	1.51	1.79	1.63	1.64	1.40	1.52	1.64	1.70	1.63
% PO4 < 3.5	11%	8%	6%	4%	13%	13%	8%	7%	5%	10%	7%	9%



	Jan	Feb	Mar	Apr	May	Jun	Jul	Aug	Sep	Oct	Nov	Dec
# PO4	47	51	52	53	53	53	52	55	58	59	58	57
# PO4 3.5 to 5.5	20	18	24	26	29	23	32	36	34	30	30	27
Pop. Mean	5.5	5.7	5.7	5.6	5.2	5.2	5.2	5.2	5.3	5.4	5.4	5.4
Std. Deviation	1.77	1.81	1.75	1.51	1.79	1.63	1.64	1.40	1.52	1.64	1.70	1.63
% PO4 3.5 to 5.5	43%	35%	46%	49%	55%	43%	62%	65%	59%	51%	52%	47%



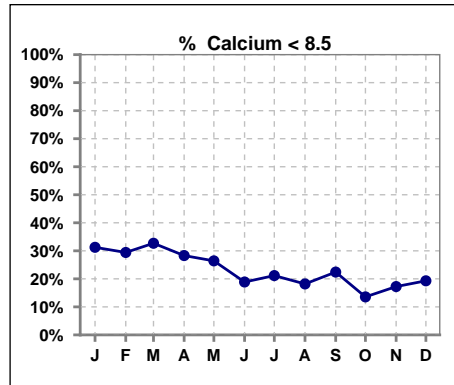
	Jan	Feb	Mar	Apr	May	Jun	Jul	Aug	Sep	Oct	Nov	Dec
# PO4	47	51	52	53	53	53	52	55	58	59	58	57
# PO4 > 5.5	22	29	25	25	17	23	16	15	21	23	24	25
Pop. Mean	5.5	5.7	5.7	5.6	5.2	5.2	5.2	5.2	5.3	5.4	5.4	5.4
Std. Deviation	1.77	1.81	1.75	1.51	1.79	1.63	1.64	1.40	1.52	1.64	1.70	1.63
% PO4 > 5.5	47%	57%	48%	47%	32%	43%	31%	27%	36%	39%	41%	44%



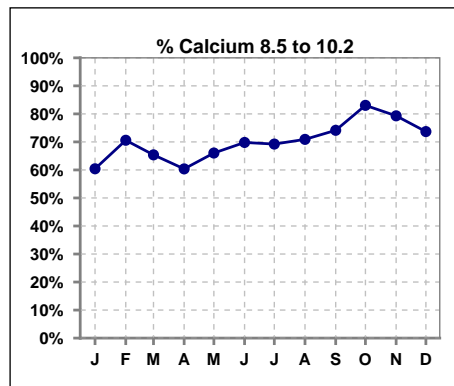
Lab methodology for PTH changed January 2012

III. OSTEODYSTROPHY - CONT.

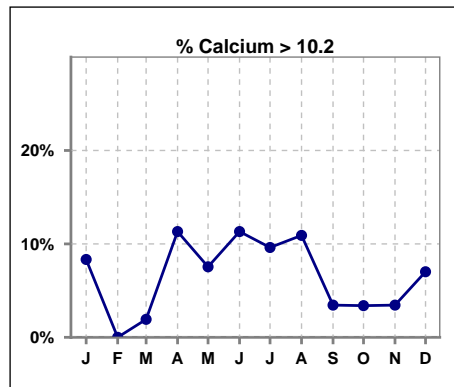
	Jan	Feb	Mar	Apr	May	Jun	Jul	Aug	Sep	Oct	Nov	Dec
# Calcium	48	51	52	53	53	53	52	55	58	59	58	57
# Calcium < 8.5	15	15	17	15	14	10	11	10	13	8	10	11
Pop. Mean	8.9	8.9	9.0	9.1	9.0	9.2	9.0	9.1	9.0	9.2	9.2	9.2
Std. Deviation	0.82	0.91	0.91	0.94	1.00	0.86	0.90	0.91	0.85	0.76	0.77	0.90
% Calcium < 8.5	31%	29%	33%	28%	26%	19%	21%	18%	22%	14%	17%	19%



	Jan	Feb	Mar	Apr	May	Jun	Jul	Aug	Sep	Oct	Nov	Dec
# Calcium	48	51	52	53	53	53	52	55	58	59	58	57
# Calcium 8.5 to 10.2	29	36	34	32	35	37	36	39	43	49	46	42
Pop. Mean	8.9	8.9	9.0	9.1	9.0	9.2	9.0	9.1	9.0	9.2	9.2	9.2
Std. Deviation	0.82	0.91	0.91	0.94	1.00	0.86	0.90	0.91	0.85	0.76	0.77	0.90
% Calcium 8.5 to 10.2	60%	71%	65%	60%	66%	70%	69%	71%	74%	83%	79%	74%



	Jan	Feb	Mar	Apr	May	Jun	Jul	Aug	Sep	Oct	Nov	Dec
# Calcium	48	51	52	53	53	53	52	55	58	59	58	57
# Calcium > 10.2	4	0	1	6	4	6	5	6	2	2	2	4
Pop. Mean	8.9	8.9	9.0	9.1	9.0	9.2	9.0	9.1	9.0	9.2	9.2	9.2
Std. Deviation	0.82	0.91	0.91	0.94	1.00	0.86	0.90	0.91	0.85	0.76	0.77	0.90
% Calcium > 10.2	8%	0%	2%	11%	8%	11%	10%	11%	3%	3%	3%	7%

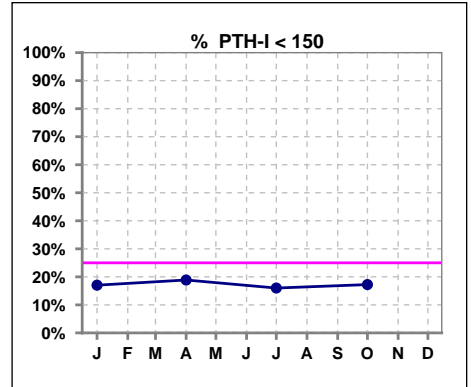


Methodology: a) All labs for 'Adequacy of Dialysis', 'Nutrition', 'Osteodystrophy' and 'Anemia' based on last value of month; b) Access data takes last access of month; c) Values for 'Infection Control' uses most recent result.

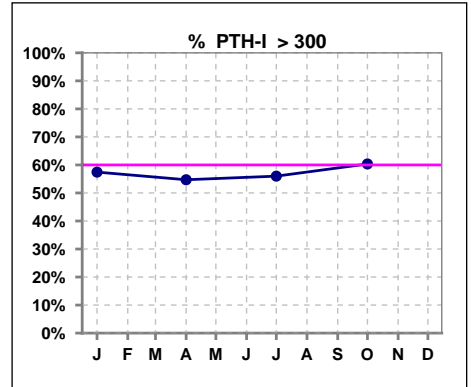
Lab methodology for PTH changed January 2012

III. OSTEODYSTROPHY - CONT.

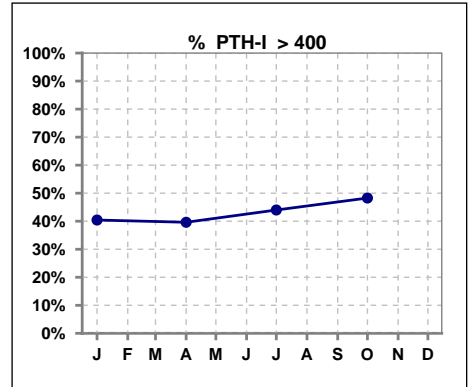
	Jan	Feb	Mar	Apr	May	Jun	Jul	Aug	Sep	Oct	Nov	Dec
# PTH-I	47			53			50			58		
# PTH-I < 150	8			10			8			10		
Pop. Mean	422			422			465			511		
Std. Deviation	367			353			371			437		
% PTH-I < 150	17%			19%			16%			17%		



	Jan	Feb	Mar	Apr	May	Jun	Jul	Aug	Sep	Oct	Nov	Dec
# PTH-I	47			53			50			58		
# PTH-I > 300	27			29			28			35		
Pop. Mean	422			422			465			511		
Std. Deviation	367			353			371			437		
% PTH-I > 300	57%			55%			56%			60%		



	Jan	Feb	Mar	Apr	May	Jun	Jul	Aug	Sep	Oct	Nov	Dec
# PTH-I	47			53			50			58		
# PTH-I > 400	47			53			50			58		
Pop. Mean	422			422			465			511		
Std. Deviation	367			353			371			437		
% PTH-I > 400	40%			40%			44%			48%		

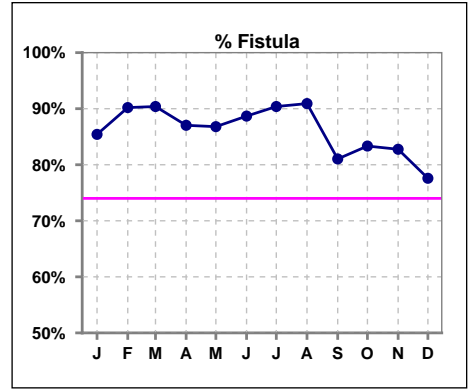


Methodology: a) All labs for 'Adequacy of Dialysis', 'Nutrition', 'Osteodystrophy' and 'Anemia' based on last value of month; b) Access data takes last access of month; c) Values for 'Infection Control' uses most recent result.

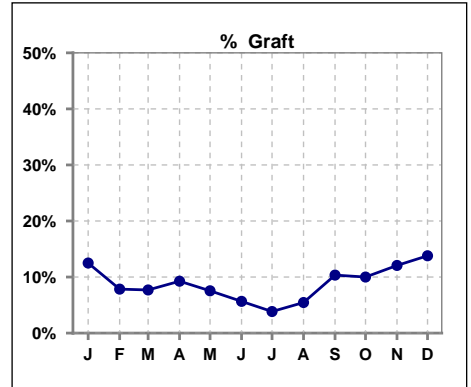
Northwest Kidney Centers - Home Hemodialysis
Quality Assurance Reports
 Through period ending Dec. 31, 2014

IV. ACCESS

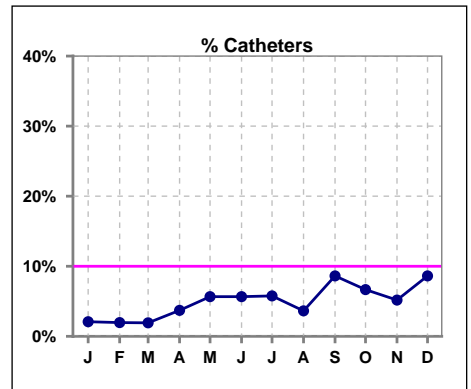
	Jan	Feb	Mar	Apr	May	Jun	Jul	Aug	Sep	Oct	Nov	Dec
# Access	48	51	52	54	53	53	52	55	58	60	58	58
# Fistula	41	46	47	47	46	47	47	50	47	50	48	45
% Fistula	85%	90%	90%	87%	87%	89%	90%	91%	81%	83%	83%	78%



	Jan	Feb	Mar	Apr	May	Jun	Jul	Aug	Sep	Oct	Nov	Dec
# Access	48	51	52	54	53	53	52	55	58	60	58	58
# Graft	6	4	4	5	4	3	2	3	6	6	7	8
% Graft	13%	8%	8%	9%	8%	6%	4%	5%	10%	10%	12%	14%



	Jan	Feb	Mar	Apr	May	Jun	Jul	Aug	Sep	Oct	Nov	Dec
# Access	48	51	52	54	53	53	52	55	58	60	58	58
# Catheters	1	1	1	2	3	3	3	2	5	4	3	5
% Catheters	2%	2%	2%	4%	6%	6%	6%	4%	9%	7%	5%	9%



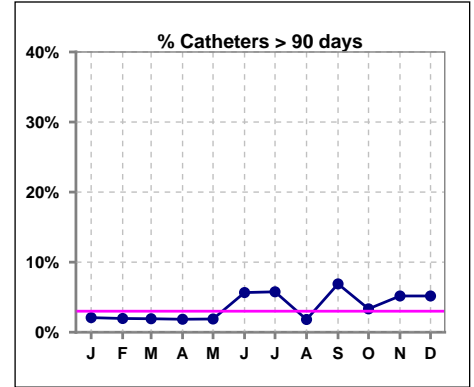
Methodology: a) All labs for 'Adequacy of Dialysis', 'Nutrition', 'Osteodystrophy' and 'Anemia' based on last value of month; b) Access data takes last access of month; c) Values for 'Infection Control' uses most recent result.

IV. ACCESS - CONT.

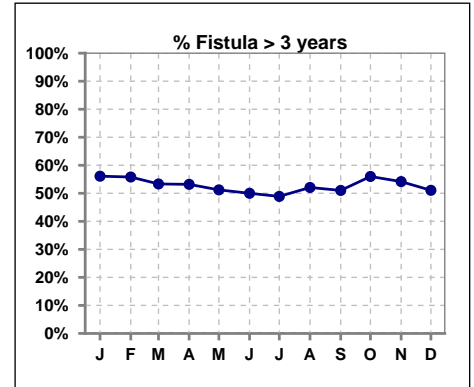
Catheters > 90 days

	Jan	Feb	Mar	Apr	May	Jun	Jul	Aug	Sep	Oct	Nov	Dec
# Access	48	51	52	54	53	53	52	55	58	60	58	58
# Catheters	1	1	1	1	1	3	3	1	4	2	3	3
% Catheters	2%	2%	2%	2%	2%	6%	6%	2%	7%	3%	5%	5%

Definition: Catheter in use on last treatment of the month

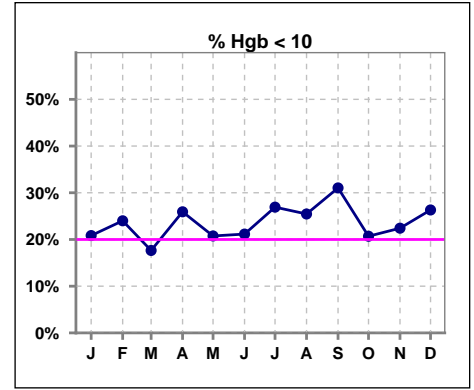


	Jan	Feb	Mar	Apr	May	Jun	Jul	Aug	Sep	Oct	Nov	Dec
# Fistula	41	43	45	47	41	46	45	48	49	50	48	47
# Fistula > 3 yrs	23	24	24	25	21	23	22	25	25	28	26	24
% Fistula > 3 yrs	56%	56%	53%	53%	51%	50%	49%	52%	51%	56%	54%	51%

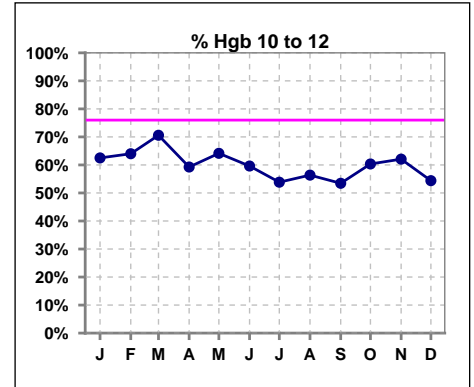


V. ANEMIA

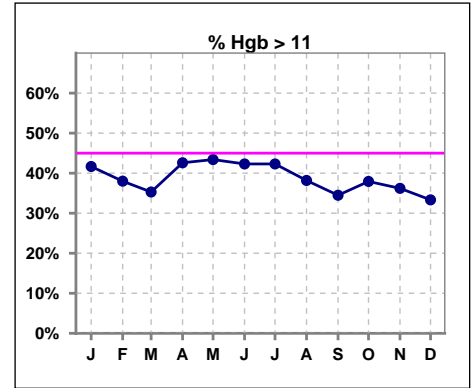
	Jan	Feb	Mar	Apr	May	Jun	Jul	Aug	Sep	Oct	Nov	Dec
# Hgb	48	50	51	54	53	52	52	55	58	58	58	57
# Hgb < 10	10	12	9	14	11	11	14	14	18	12	13	15
Pop. Mean	10.9	10.7	10.7	10.7	10.8	10.9	10.8	10.7	10.6	10.8	10.8	10.7
Std. Deviation	1.4	1.3	1.2	1.3	1.2	1.3	1.4	1.3	1.5	1.2	1.4	1.4
% Hgb < 10	21%	24%	18%	26%	21%	21%	27%	25%	31%	21%	22%	26%



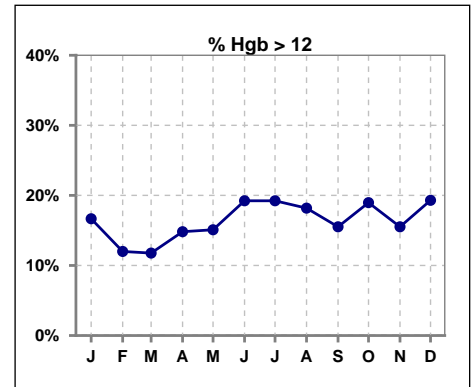
	Jan	Feb	Mar	Apr	May	Jun	Jul	Aug	Sep	Oct	Nov	Dec
# Hgb	48	50	51	54	53	52	52	55	58	58	58	57
# Hgb 10 to 12	30	32	36	32	34	31	28	31	31	35	36	31
Pop. Mean	10.9	10.7	10.7	10.7	10.8	10.9	10.8	10.7	10.6	10.8	10.8	10.7
Std. Deviation	1.4	1.3	1.2	1.3	1.2	1.3	1.4	1.3	1.5	1.2	1.4	1.4
% Hgb 10 to 12	63%	64%	71%	59%	64%	60%	54%	56%	53%	60%	62%	54%



	Jan	Feb	Mar	Apr	May	Jun	Jul	Aug	Sep	Oct	Nov	Dec
# Hgb	48	50	51	54	53	52	52	55	58	58	58	57
# Hgb > 11	20	19	18	23	23	22	22	21	20	22	21	19
Pop. Mean	10.9	10.7	10.7	10.7	10.8	10.9	10.8	10.7	10.6	10.8	10.8	10.7
Std. Deviation	1.4	1.3	1.2	1.3	1.2	1.3	1.4	1.3	1.5	1.2	1.4	1.4
% Hgb > 11	42%	38%	35%	43%	43%	42%	42%	38%	34%	38%	36%	33%



	Jan	Feb	Mar	Apr	May	Jun	Jul	Aug	Sep	Oct	Nov	Dec
# Hgb	48	50	51	54	53	52	52	55	58	58	58	57
# Hgb > 12	8	6	6	8	8	10	10	10	9	11	9	11
Pop. Mean	10.9	10.7	10.7	10.7	10.8	10.9	10.8	10.7	10.6	10.8	10.8	10.7
Std. Deviation	1.4	1.3	1.2	1.3	1.2	1.3	1.4	1.3	1.5	1.2	1.4	1.4
% Hgb > 12	17%	12%	12%	15%	15%	19%	19%	18%	16%	19%	16%	19%

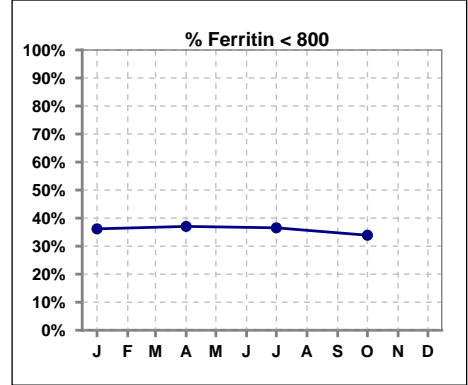


Methodology: a) All labs for 'Adequacy of Dialysis', 'Nutrition', 'Osteodystrophy' and 'Anemia' based on last value of month; b) Access data takes last access of month; c) Values for 'Infection Control' uses most recent result.

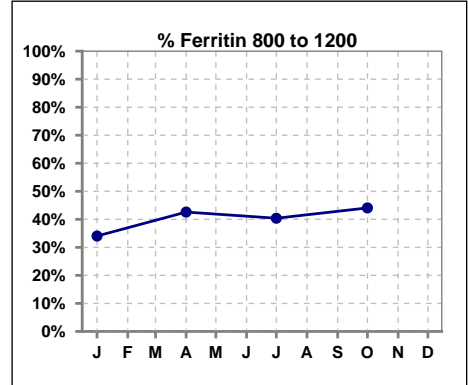
V. ANEMIA - CONT.

Iron Profile

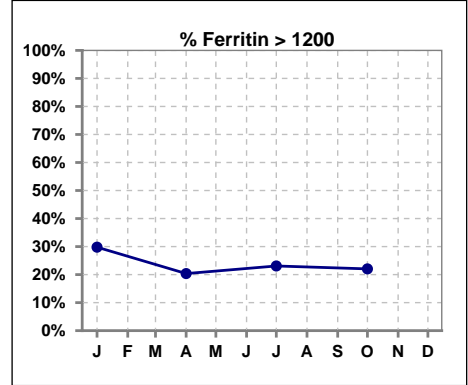
	Jan	Feb	Mar	Apr	May	Jun	Jul	Aug	Sep	Oct	Nov	Dec
# Ferritin	47			54			52			59		
# Ferritin < 800	17			20			19			20		
Pop. Mean	900			858			932			927		
Std. Deviation	466			450			484			469		
% Ferritin < 800	36%			37%			37%			34%		



	Jan	Feb	Mar	Apr	May	Jun	Jul	Aug	Sep	Oct	Nov	Dec
# Ferritin	47			54			52			59		
# Ferritin 800 to 1200	16			23			21			26		
Pop. Mean	900			858			932			927		
Std. Deviation	466			450			484			469		
% Ferritin 800 to 1200	34%			43%			40%			44%		

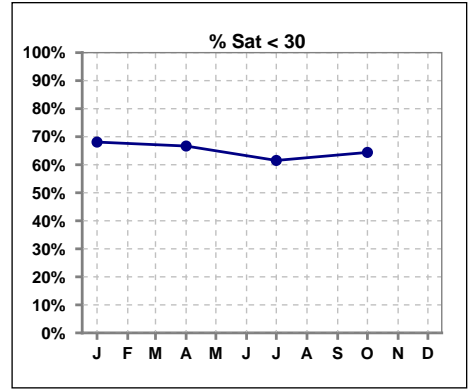


	Jan	Feb	Mar	Apr	May	Jun	Jul	Aug	Sep	Oct	Nov	Dec
# Ferritin	47			54			52			59		
# Ferritin > 1200	14			11			12			13		
Pop. Mean	900			858			932			927		
Std. Deviation	466			450			484			469		
% Ferritin > 1200	30%			20%			23%			22%		

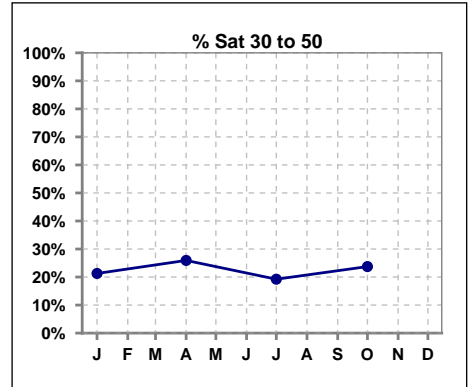


V. ANEMIA - CONT.

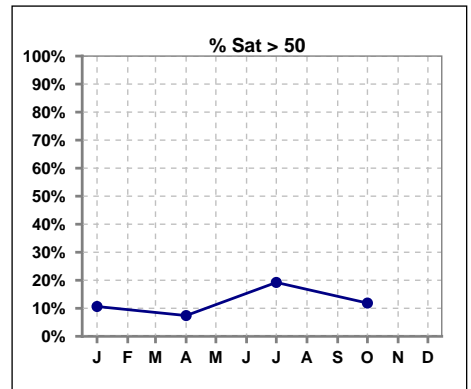
	Jan	Feb	Mar	Apr	May	Jun	Jul	Aug	Sep	Oct	Nov	Dec
# % Sat	47			54			52			59		
# % Sat < 30	32			36			32			38		
Pop. Mean	28			27			33			30		
Std. Deviation	14			12			18			17		
% % Sat < 30	68%			67%			62%			64%		



	Jan	Feb	Mar	Apr	May	Jun	Jul	Aug	Sep	Oct	Nov	Dec
# % Sat	47			54			52			59		
# % Sat 30 to 50	10			14			10			14		
Pop. Mean	28			27			33			30		
Std. Deviation	14			12			18			17		
% % Sat 30 to 50	21%			26%			19%			24%		

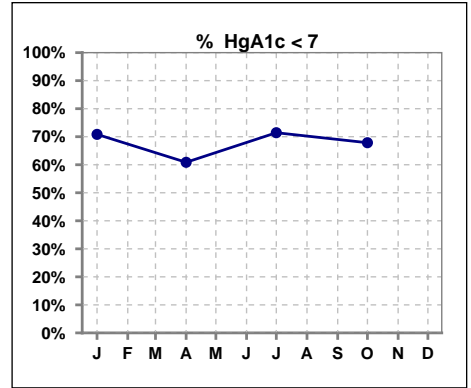


	Jan	Feb	Mar	Apr	May	Jun	Jul	Aug	Sep	Oct	Nov	Dec
# % Sat	47			54			52			59		
# % Sat > 50	5			4			10			7		
Pop. Mean	28			27			33			30		
Std. Deviation	14			12			18			17		
% % Sat > 50	11%			7%			19%			12%		



VI. Diabetes

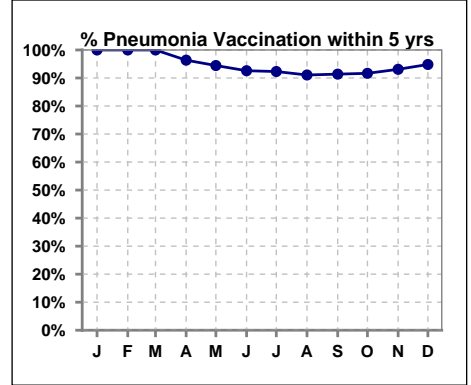
	Jan	Feb	Mar	Apr	May	Jun	Jul	Aug	Sep	Oct	Nov	Dec
# HgA1c	24			23			21			28		
# HgA1c < 7	17			14			15			19		
Pop. Mean	6.7			6.7			6.6			6.3		
Std. Deviation	1.30			1.22			1.29			1.15		
% HgA1c < 7	71%			61%			71%			68%		



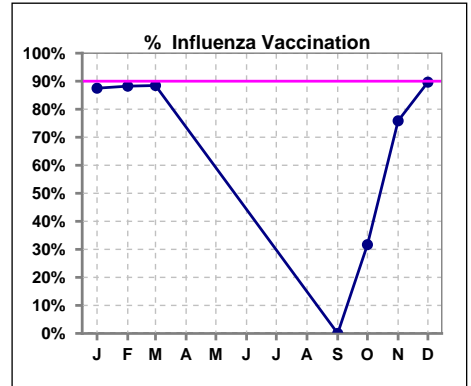
VII. Infection Control

Pneumonia vaccination within the past five years

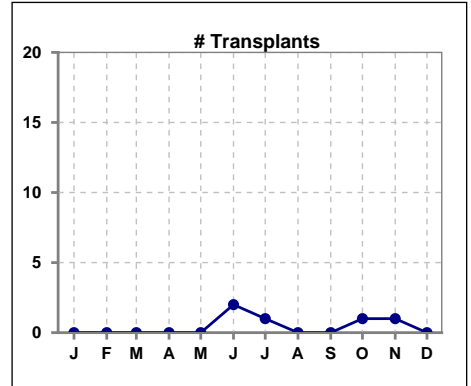
	Jan	Feb	Mar	Apr	May	Jun	Jul	Aug	Sep	Oct	Nov	Dec
# Patient	48	51	52	55	54	54	52	56	58	60	58	58
# Pneumonia	48	51	52	53	51	50	48	51	53	55	54	55
% Pneumonia	100%	100%	100%	96%	94%	93%	92%	91%	91%	92%	93%	95%



	Jan	Feb	Mar	Apr	May	Jun	Jul	Aug	Sep	Oct	Nov	Dec
# Patient	48	51	52						58	60	58	58
# Influenza	42	45	46						0	19	44	52
% Influenza	88%	88%	88%						0%	32%	76%	90%



	Jan	Feb	Mar	Apr	May	Jun	Jul	Aug	Sep	Oct	Nov	Dec
# Patient	48	51	52	55	54	54	52	56	58	60	58	58
# Transplants	0	0	0	0	0	2	1	0	0	1	1	0



Methodology: a) All labs for 'Adequacy of Dialysis', 'Nutrition', 'Osteodystrophy' and 'Anemia' based on last value of month; b) Access data takes last access of month; c) Values for 'Infection Control' uses most recent result.