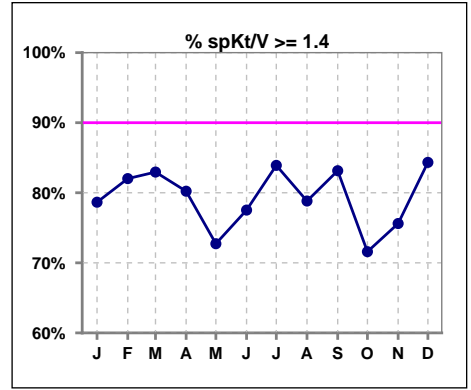
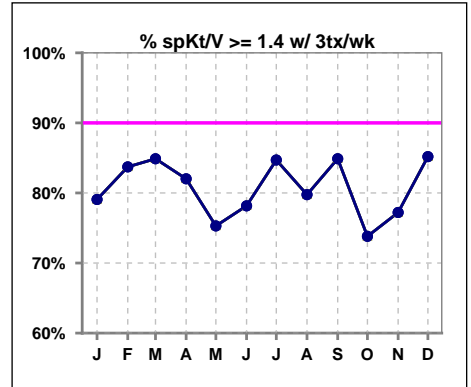


I. ADEQUACY OF DIALYSIS

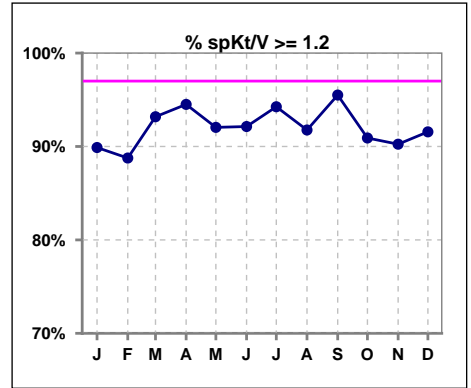
	Jan	Feb	Mar	Apr	May	Jun	Jul	Aug	Sep	Oct	Nov	Dec
# spKt/V	89	89	88	91	88	89	87	85	89	88	82	83
# spKt/V >= 1.4	70	73	73	73	64	69	73	67	74	63	62	70
Pop. Mean	1.63	1.61	1.66	1.63	1.58	1.59	1.65	1.62	1.67	1.60	1.59	1.65
Std. Deviation	0.35	0.37	0.35	0.33	0.32	0.31	0.34	0.31	0.32	0.36	0.33	0.32
% spKt/V >= 1.4	79%	82%	83%	80%	73%	78%	84%	79%	83%	72%	76%	84%



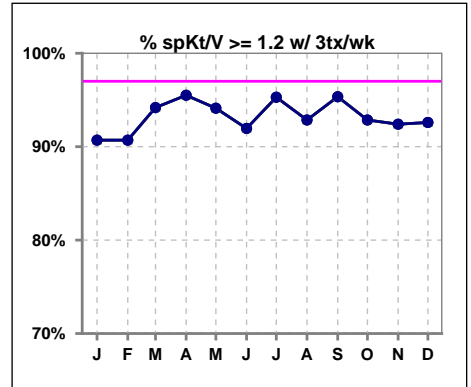
	Jan	Feb	Mar	Apr	May	Jun	Jul	Aug	Sep	Oct	Nov	Dec
# spKt/V w/ 3tx/wk	86	86	86	89	85	87	85	84	86	84	79	81
# spKt/V >= 1.4 w/3tx/wk	68	72	73	73	64	68	72	67	73	62	61	69
Pop. Mean	1.64	1.63	1.67	1.65	1.59	1.60	1.66	1.63	1.69	1.62	1.60	1.66
Std. Deviation	0.35	0.36	0.34	0.32	0.31	0.31	0.33	0.31	0.32	0.36	0.31	0.32
% >= 1.4 w/3tx/wk	79%	84%	85%	82%	75%	78%	85%	80%	85%	74%	77%	85%



	Jan	Feb	Mar	Apr	May	Jun	Jul	Aug	Sep	Oct	Nov	Dec
# spKt/V	89	89	88	91	88	89	87	85	89	88	82	83
# spKt/V >= 1.2	80	79	82	86	81	82	82	78	85	80	74	76
Pop. Mean	1.63	1.61	1.66	1.63	1.58	1.59	1.65	1.62	1.67	1.60	1.59	1.65
Std. Deviation	0.35	0.37	0.35	0.33	0.32	0.31	0.34	0.31	0.32	0.36	0.33	0.32
% spKt/V >= 1.2	90%	89%	93%	95%	92%	92%	94%	92%	96%	91%	90%	92%



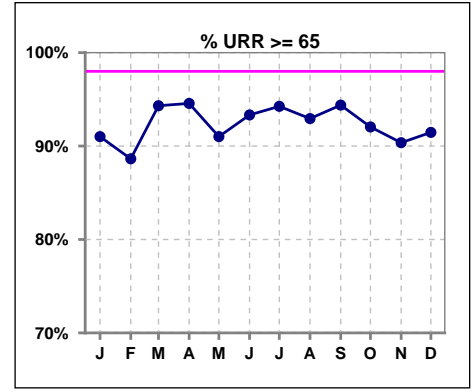
	Jan	Feb	Mar	Apr	May	Jun	Jul	Aug	Sep	Oct	Nov	Dec
# spKt/V w/ 3tx/wk	86	86	86	89	85	87	85	84	86	84	79	81
# spKt/V >= 1.2 w/3tx/wk	78	78	81	85	80	80	81	78	82	78	73	75
Pop. Mean	1.64	1.63	1.67	1.65	1.59	1.60	1.66	1.63	1.69	1.62	1.60	1.66
Std. Deviation	0.35	0.36	0.34	0.32	0.31	0.31	0.33	0.31	0.32	0.36	0.31	0.32
% >= 1.2 w/3tx/wk	91%	91%	94%	96%	94%	92%	95%	93%	95%	93%	92%	93%



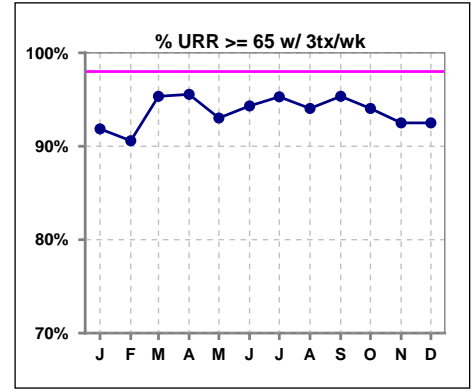
Methodology: a) All labs for 'Adequacy of Dialysis', 'Nutrition', 'Osteodystrophy', 'Anemia' and 'Diabetes' based on last value of month; b) BP's and #L processed are average of all values for month; c) Access data takes last access of month; d) Values for SGA and 'Infection Control' use most recent result.

I. ADEQUACY OF DIALYSIS - CONT.

	Jan	Feb	Mar	Apr	May	Jun	Jul	Aug	Sep	Oct	Nov	Dec
# URR	89	88	88	92	89	90	87	85	89	88	83	82
# URR >= 65	81	78	83	87	81	84	82	79	84	81	75	75
Pop. Mean	75	74	75	75	74	74	76	75	76	74	74	75
Std. Deviation	7.75	8.26	6.97	7.85	7.33	7.25	7.18	6.56	6.44	7.68	7.79	6.95
% URR >= 65	91%	89%	94%	95%	91%	93%	94%	93%	94%	92%	90%	91%



	Jan	Feb	Mar	Apr	May	Jun	Jul	Aug	Sep	Oct	Nov	Dec
# URR w/ 3tx/wk	86	85	86	90	86	88	85	84	86	84	80	80
# URR>=65 w/ 3tx/wk	79	77	82	86	80	83	81	79	82	79	74	74
Pop. Mean	75	75	76	75	74	74	76	75	76	75	75	75
Std. Deviation	7.79	8.07	6.81	7.45	7.18	7.26	7.16	6.47	6.31	7.42	7.32	6.64
% URR>=65 w/ 3tx/wk	92%	91%	95%	96%	93%	94%	95%	94%	95%	94%	93%	93%

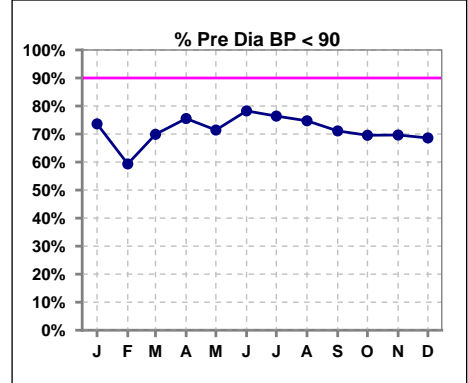


Methodology: a) All labs for 'Adequacy of Dialysis', 'Nutrition', 'Osteodystrophy', 'Anemia' and 'Diabetes' based on last value of month; b) BP's and #L processed are average of all values for month; c) Access data takes last access of month; d) Values for SGA and 'Infection Control' use most recent result.

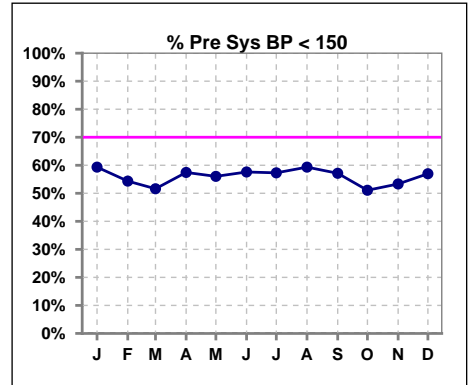
I. ADEQUACY OF DIALYSIS - CONT.

Blood Pressure Control (Pre)

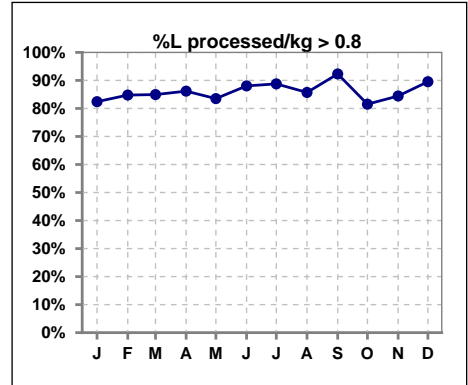
	Jan	Feb	Mar	Apr	May	Jun	Jul	Aug	Sep	Oct	Nov	Dec
# Pre Dia BP	91	91	93	94	91	92	89	91	90	92	89	86
# Pre Dia BP < 90	67	54	65	71	65	72	68	68	64	64	62	59
Pop. Mean	81	84	83	82	82	81	80	81	82	82	84	83
Std. Deviation	13.3	13.6	13.3	12.9	12.4	13.4	13.3	13.5	14.7	14.3	14.5	14.6
% Pre Dia BP < 90	74%	59%	70%	76%	71%	78%	76%	75%	71%	70%	70%	69%



	Jan	Feb	Mar	Apr	May	Jun	Jul	Aug	Sep	Oct	Nov	Dec
# Pre Sys BP	91	92	93	94	91	92	89	91	91	92	90	86
# Pre Sys BP < 150	54	50	48	54	51	53	51	54	52	47	48	49
Pop. Mean	146	151	149	147	148	147	145	147	148	149	153	149
Std. Deviation	19.7	19.7	19.1	19.6	19.2	19.1	19.9	23.8	22.5	22.2	23.4	23.2
%Pre Sys BP <150	59%	54%	52%	57%	56%	58%	57%	59%	57%	51%	53%	57%

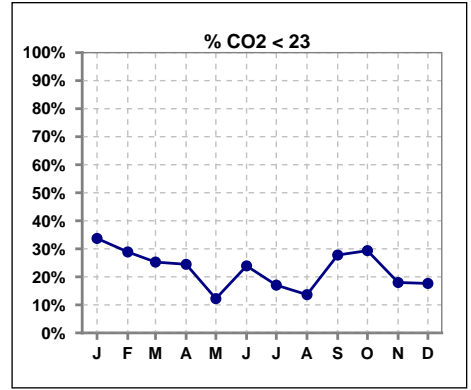


	Jan	Feb	Mar	Apr	May	Jun	Jul	Aug	Sep	Oct	Nov	Dec
# L processed/kg	91	92	93	94	91	92	89	91	91	92	90	86
# L processed/kg>0.8	75	78	79	81	76	81	79	78	84	75	76	77
Pop. Mean	1	1	1	1	1	1	1	1	1	1	1	1
Std. Deviation	0.3	0.3	0.3	0.3	0.3	0.2	0.3	0.3	0.3	0.3	0.3	0.3
% L processed/kg>0.8	82%	85%	85%	86%	84%	88%	89%	86%	92%	82%	84%	90%

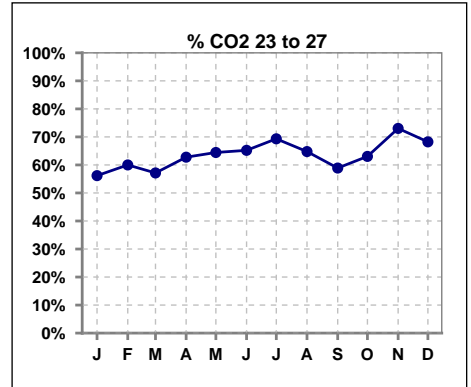


I. ADEQUACY OF DIALYSIS - CONT.

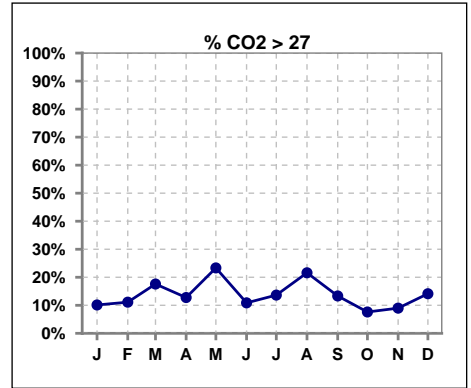
	Jan	Feb	Mar	Apr	May	Jun	Jul	Aug	Sep	Oct	Nov	Dec
# CO2	89	90	91	94	90	92	88	88	90	92	89	85
# CO2 < 23	30	26	23	23	11	22	15	12	25	27	16	15
Pop. Mean	24	24	25	24	25	24	25	26	24	24	24	25
Std. Deviation	2.91	2.96	2.82	3.39	2.55	3.14	2.61	2.91	3.21	3.16	2.83	2.73
% CO2 < 23	34%	29%	25%	24%	12%	24%	17%	14%	28%	29%	18%	18%



	Jan	Feb	Mar	Apr	May	Jun	Jul	Aug	Sep	Oct	Nov	Dec
# CO2	89	90	91	94	90	92	88	88	90	92	89	85
# CO2 23 to 27	50	54	52	59	58	60	61	57	53	58	65	58
Pop. Mean	24	24	25	24	25	24	25	26	24	24	24	25
Std. Deviation	2.91	2.96	2.82	3.39	2.55	3.14	2.61	2.91	3.21	3.16	2.83	2.73
% CO2 23 to 27	56%	60%	57%	63%	64%	65%	69%	65%	59%	63%	73%	68%



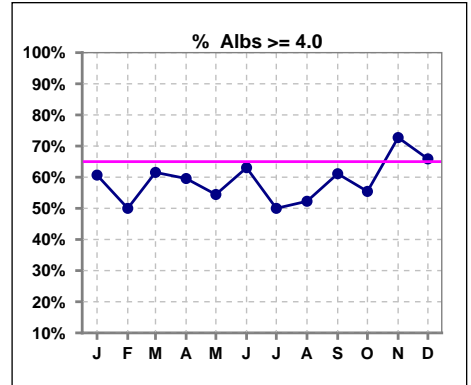
	Jan	Feb	Mar	Apr	May	Jun	Jul	Aug	Sep	Oct	Nov	Dec
# CO2	89	90	91	94	90	92	88	88	90	92	89	85
# CO2 > 27	9	10	16	12	21	10	12	19	12	7	8	12
Pop. Mean	24	24	25	24	25	24	25	26	24	24	24	25
Std. Deviation	2.91	2.96	2.82	3.39	2.55	3.14	2.61	2.91	3.21	3.16	2.83	2.73
% CO2 > 27	10%	11%	18%	13%	23%	11%	14%	22%	13%	8%	9%	14%



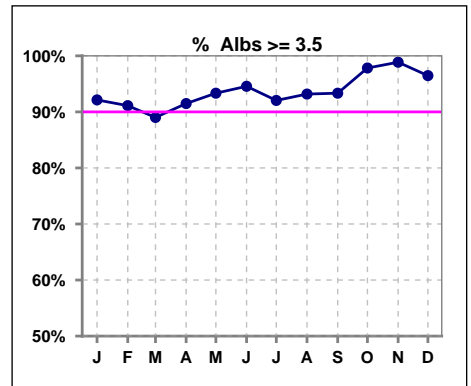
*Albumin values use BCG method - as of July 2001

II. NUTRITION

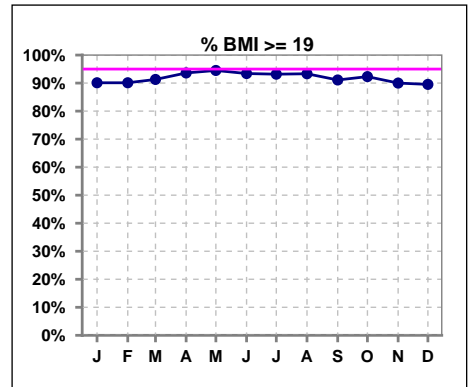
	Jan	Feb	Mar	Apr	May	Jun	Jul	Aug	Sep	Oct	Nov	Dec
# Albumin	89	90	91	94	90	92	88	88	90	92	88	85
# Albumin >= 4.0	54	45	56	56	49	58	44	46	55	51	64	56
Pop. Mean	4.0	3.9	3.9	4.0	3.9	4.0	3.9	4.0	4.0	4.0	4.1	4.0
Std. Deviation	0.35	0.37	0.42	0.38	0.34	0.35	0.33	0.39	0.31	0.30	0.29	0.32
% Alb >= 4.0	61%	50%	62%	60%	54%	63%	50%	52%	61%	55%	73%	66%



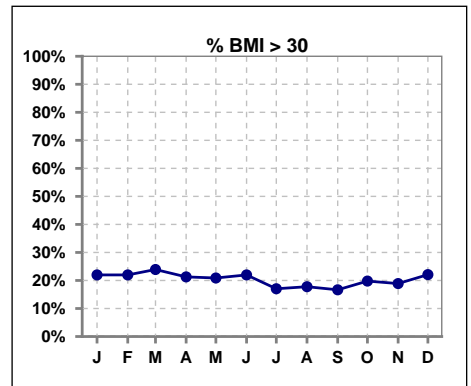
	Jan	Feb	Mar	Apr	May	Jun	Jul	Aug	Sep	Oct	Nov	Dec
# Albumin	89	90	91	94	90	92	88	88	90	92	88	85
# Albumin >= 3.5	82	82	81	86	84	87	81	82	84	90	87	82
Pop. Mean	4.0	3.9	3.9	4.0	3.9	4.0	3.9	4.0	4.0	4.0	4.1	4.0
Std. Deviation	0.35	0.37	0.42	0.38	0.34	0.35	0.33	0.39	0.31	0.30	0.29	0.32
% Alb >= 3.5	92%	91%	89%	91%	93%	95%	92%	93%	93%	98%	99%	96%



	Jan	Feb	Mar	Apr	May	Jun	Jul	Aug	Sep	Oct	Nov	Dec
# BMI	91	91	92	94	91	91	88	90	90	91	90	86
# BMI >= 19	82	82	84	88	86	85	82	84	82	84	81	77
Pop. Mean	26	26	26	26	26	26	26	25	25	25	26	26
Std. Deviation	6.1	6.0	6.0	5.9	5.7	5.8	5.7	5.8	5.6	5.9	5.9	6.1
% BMI >= 19	90%	90%	91%	94%	95%	93%	93%	93%	91%	92%	90%	90%



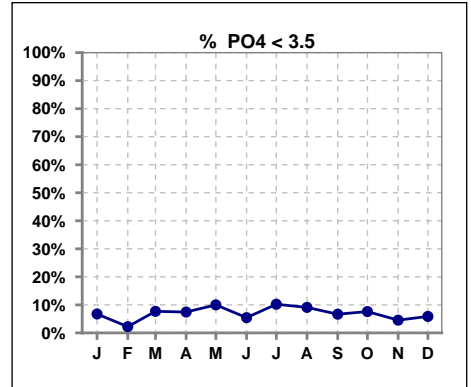
	Jan	Feb	Mar	Apr	May	Jun	Jul	Aug	Sep	Oct	Nov	Dec
# BMI	91	91	92	94	91	91	88	90	90	91	90	86
# BMI > 30	20	20	22	20	19	20	15	16	15	18	17	19
Pop. Mean	26	26	26	26	26	26	26	25	25	25	26	26
Std. Deviation	6.1	6.0	6.0	5.9	5.7	5.8	5.7	5.8	5.6	5.9	5.9	6.1
% BMI > 30	22%	22%	24%	21%	21%	22%	17%	18%	17%	20%	19%	22%



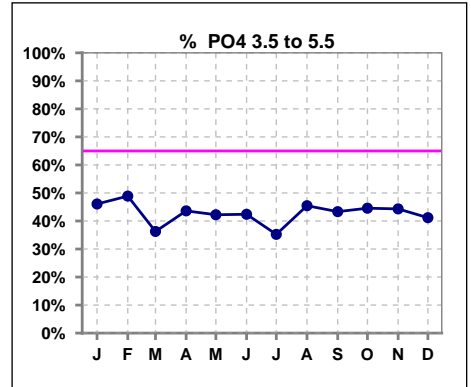
Lab methodology for PTH changed January 2012

III. OSTEODYSTROPHY

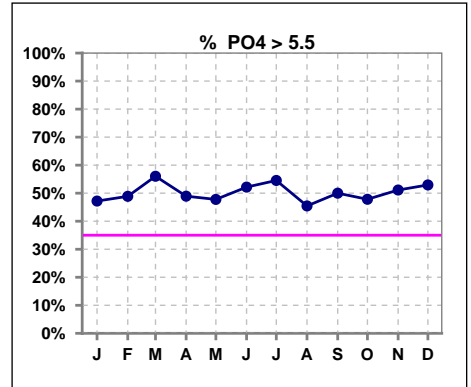
	Jan	Feb	Mar	Apr	May	Jun	Jul	Aug	Sep	Oct	Nov	Dec
# PO4	89	90	91	94	90	92	88	88	90	92	88	85
# PO4 < 3.5	6	2	7	7	9	5	9	8	6	7	4	5
Pop. Mean	5.7	6.0	6.0	5.7	5.6	5.9	5.9	5.5	5.8	5.6	5.8	5.9
Std. Deviation	1.93	1.83	1.98	1.79	1.71	1.70	1.70	1.76	1.83	1.61	1.86	1.88
% PO4 < 3.5	7%	2%	8%	7%	10%	5%	10%	9%	7%	8%	5%	6%



	Jan	Feb	Mar	Apr	May	Jun	Jul	Aug	Sep	Oct	Nov	Dec
# PO4	89	90	91	94	90	92	88	88	90	92	88	85
# PO4 3.5 to 5.5	41	44	33	41	38	39	31	40	39	41	39	35
Pop. Mean	5.7	6.0	6.0	5.7	5.6	5.9	5.9	5.5	5.8	5.6	5.8	5.9
Std. Deviation	1.93	1.83	1.98	1.79	1.71	1.70	1.70	1.76	1.83	1.61	1.86	1.88
% PO4 3.5 to 5.5	46%	49%	36%	44%	42%	42%	35%	45%	43%	45%	44%	41%



	Jan	Feb	Mar	Apr	May	Jun	Jul	Aug	Sep	Oct	Nov	Dec
# PO4	89	90	91	94	90	92	88	88	90	92	88	85
# PO4 > 5.5	42	44	51	46	43	48	48	40	45	44	45	45
Pop. Mean	5.7	6.0	6.0	5.7	5.6	5.9	5.9	5.5	5.8	5.6	5.8	5.9
Std. Deviation	1.93	1.83	1.98	1.79	1.71	1.70	1.70	1.76	1.83	1.61	1.86	1.88
% PO4 > 5.5	47%	49%	56%	49%	48%	52%	55%	45%	50%	48%	51%	53%

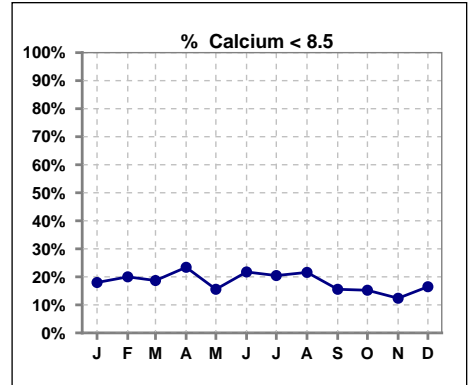


Methodology: a) All labs for 'Adequacy of Dialysis', 'Nutrition', 'Osteodystrophy', 'Anemia' and 'Diabetes' based on last value of month; b) BP's and #L processed are average of all values for month; c) Access data takes last access of month; d) Values for SGA and 'Infection Control' use most recent result.

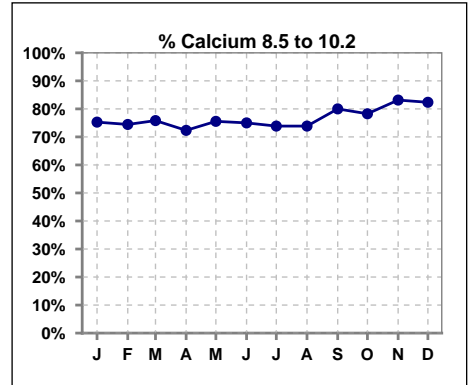
Lab methodology for PTH changed January 2012

III. OSTEODYSTROPHY - CONT.

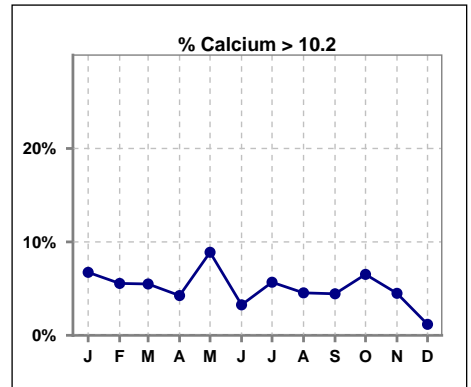
	Jan	Feb	Mar	Apr	May	Jun	Jul	Aug	Sep	Oct	Nov	Dec
# Calcium	89	90	91	94	90	92	88	88	90	92	89	85
# Calcium < 8.5	16	18	17	22	14	20	18	19	14	14	11	14
Pop. Mean	9.0	9.1	9.0	9.1	9.2	9.0	9.0	9.1	9.2	9.2	9.2	9.1
Std. Deviation	0.86	0.89	0.86	0.80	0.86	0.90	0.83	0.86	0.76	0.76	0.62	0.60
% Calcium < 8.5	18%	20%	19%	23%	16%	22%	20%	22%	16%	15%	12%	16%



	Jan	Feb	Mar	Apr	May	Jun	Jul	Aug	Sep	Oct	Nov	Dec
# Calcium	89	90	91	94	90	92	88	88	90	92	89	85
# Calcium 8.5 to 10.2	67	67	69	68	68	69	65	65	72	72	74	70
Pop. Mean	9.0	9.1	9.0	9.1	9.2	9.0	9.0	9.1	9.2	9.2	9.2	9.1
Std. Deviation	0.86	0.89	0.86	0.80	0.86	0.90	0.83	0.86	0.76	0.76	0.62	0.60
% Calcium 8.5 to 10.2	75%	74%	76%	72%	76%	75%	74%	74%	80%	78%	83%	82%



	Jan	Feb	Mar	Apr	May	Jun	Jul	Aug	Sep	Oct	Nov	Dec
# Calcium	89	90	91	94	90	92	88	88	90	92	89	85
# Calcium > 10.2	6	5	5	4	8	3	5	4	4	6	4	1
Pop. Mean	9.0	9.1	9.0	9.1	9.2	9.0	9.0	9.1	9.2	9.2	9.2	9.1
Std. Deviation	0.86	0.89	0.86	0.80	0.86	0.90	0.83	0.86	0.76	0.76	0.62	0.60
% Calcium > 10.2	7%	6%	5%	4%	9%	3%	6%	5%	4%	7%	4%	1%

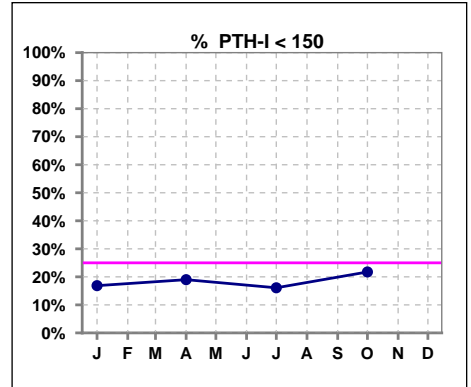


Methodology: a) All labs for 'Adequacy of Dialysis', 'Nutrition', 'Osteodystrophy', 'Anemia' and 'Diabetes' based on last value of month; b) BP's and #L processed are average of all values for month; c) Access data takes last access of month; d) Values for SGA and 'Infection Control' use most recent result.

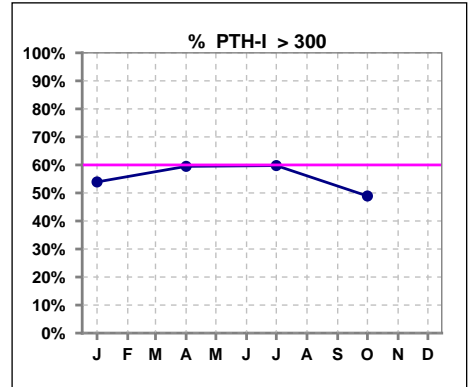
Lab methodology for PTH changed January 2012

III. OSTEODYSTROPHY - CONT.

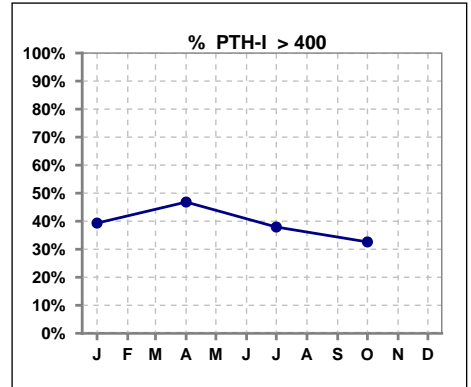
	Jan	Feb	Mar	Apr	May	Jun	Jul	Aug	Sep	Oct	Nov	Dec
# PTH-I	89			79			87			92		
# PTH-I < 150	15			15			14			20		
Pop. Mean	388			381			407			355		
Std. Deviation	252			240			303			298		
% PTH-I < 150	17%			19%			16%			22%		



	Jan	Feb	Mar	Apr	May	Jun	Jul	Aug	Sep	Oct	Nov	Dec
# PTH-I	89			79			87			92		
# PTH-I > 300	48			47			52			45		
Pop. Mean	388			381			407			355		
Std. Deviation	252			240			303			298		
% PTH-I > 300	54%			59%			60%			49%		



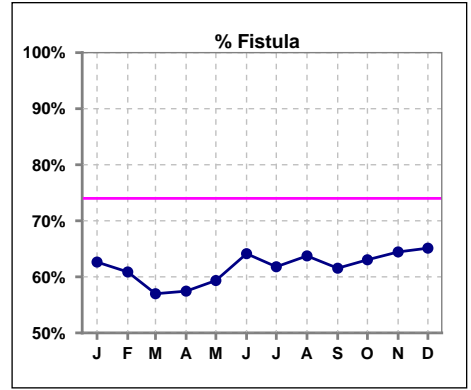
	Jan	Feb	Mar	Apr	May	Jun	Jul	Aug	Sep	Oct	Nov	Dec
# PTH-I	89			79			87			92		
# PTH-I > 400	35			37			33			30		
Pop. Mean	388			381			407			355		
Std. Deviation	252			240			303			298		
% PTH-I > 400	39%			47%			38%			33%		



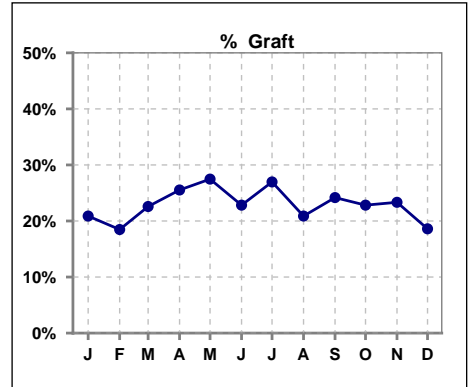
Methodology: a) All labs for 'Adequacy of Dialysis', 'Nutrition', 'Osteodystrophy', 'Anemia' and 'Diabetes' based on last value of month; b) BP's and #L processed are average of all values for month; c) Access data takes last access of month; d) Values for SGA and 'Infection Control' use most recent result.

IV. ACCESS

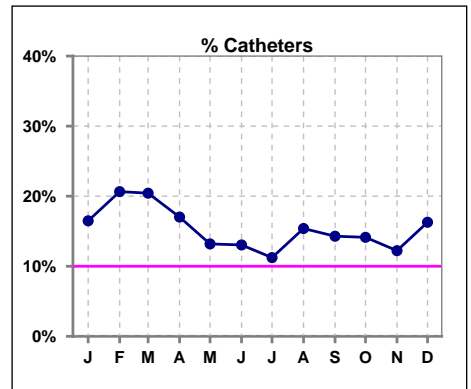
	Jan	Feb	Mar	Apr	May	Jun	Jul	Aug	Sep	Oct	Nov	Dec
# Access	91	92	93	94	91	92	89	91	91	92	90	86
# Fistula	57	56	53	54	54	59	55	58	56	58	58	56
% Fistula	63%	61%	57%	57%	59%	64%	62%	64%	62%	63%	64%	65%



	Jan	Feb	Mar	Apr	May	Jun	Jul	Aug	Sep	Oct	Nov	Dec
# Access	91	92	93	94	91	92	89	91	91	92	90	86
# Graft	19	17	21	24	25	21	24	19	22	21	21	16
% Graft	21%	18%	23%	26%	27%	23%	27%	21%	24%	23%	23%	19%



	Jan	Feb	Mar	Apr	May	Jun	Jul	Aug	Sep	Oct	Nov	Dec
# Access	91	92	93	94	91	92	89	91	91	92	90	86
# Catheters	15	19	19	16	12	12	10	14	13	13	11	14
% Catheters	16%	21%	20%	17%	13%	13%	11%	15%	14%	14%	12%	16%



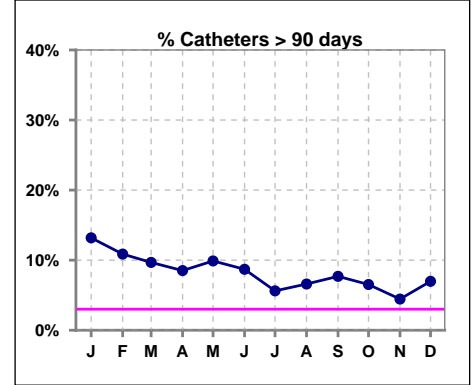
Methodology: a) All labs for 'Adequacy of Dialysis', 'Nutrition', 'Osteodystrophy', 'Anemia' and 'Diabetes' based on last value of month; b) BP's and #L processed are average of all values for month; c) Access data takes last access of month; d) Values for SGA and 'Infection Control' use most recent result.

IV. ACCESS - CONT.

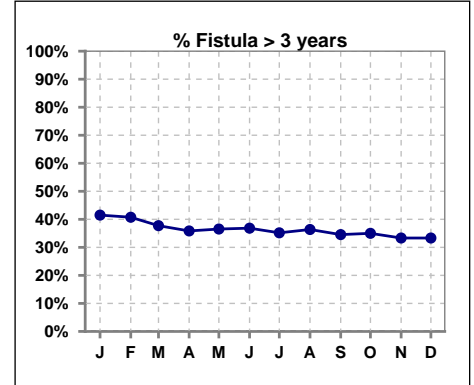
Catheters > 90 days

	Jan	Feb	Mar	Apr	May	Jun	Jul	Aug	Sep	Oct	Nov	Dec
# Access	91	92	93	94	91	92	89	91	91	92	90	86
# Catheters	12	10	9	8	9	8	5	6	7	6	4	6
% Catheters	13%	11%	10%	9%	10%	9%	6%	7%	8%	7%	4%	7%

Definition: Catheter in use on last treatment of the month



	Jan	Feb	Mar	Apr	May	Jun	Jul	Aug	Sep	Oct	Nov	Dec
# Fistula	53	54	53	53	52	57	54	55	55	60	57	54
# Fistula > 3 yrs	22	22	20	19	19	21	19	20	19	21	19	18
% Fistula > 3 yrs	42%	41%	38%	36%	37%	37%	35%	36%	35%	35%	33%	33%



All rates are calculated per 100 patient-month

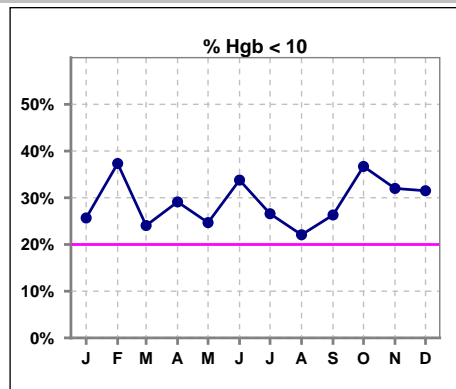
(number of infections/number of accesses x100)

EBKC	Total Fistula	Fistula Infected	Fistula ARB Rate	National Rate	Total Grafts	Graft Infected	Graft ARB Rate	National Rate	Total Cath	Cath Infected	Cath ARB Rate	National Rate	Total Accesses	Total Access Infected	All ARB Rate Per 100 pt- Months	National Rate
2013-2014 Month																
Dec	58	0	0	0.23	24	0	0	0.51	19	1	5.2632	2.55	101	1	0.990	
Jan	52	0	0	0.23	23	0	0	0.51	16	0	0	2.55	91	0	0	
Feb	52	0	0	0.23	20	0	0	0.51	21	0	0	2.55	93	0	0	
Mar	51	0	0	0.23	23	0	0	0.51	20	0	0	2.55	94	0	0	
April	51	0	0	0.23	28	0	0	0.51	14	0	0	2.55	93	0	0	
May	52	0	0	0.23	25	0	0	0.51	14	0	0	2.55	91	0	0	
June	54	0	0	0.23	26	0	0	0.51	9	0	0	2.55	89	0	0	
July	56	0	0	0.23	25	0	0	0.51	12	0	0	2.55	93	0	0	
Aug	55	0	0	0.23	23	0	0	0.51	12	0	0	2.55	90	0	0	
Sept	52	0	0	0.23	23	0	0	0.51	12	0	0	2.55	87	0	0	
Oct	55	0	0	0.23	22	0	0	1.51	10	0	0	2.55	87	0	0	
Nov	58	0	0	0.23	22	0	0	1.51	12	0	0	2.55	92	0	0	
Annual Total:	646	0	0		284	0	0		171	1	0.5848		1101	1	0.091	0.88

V. ANEMIA

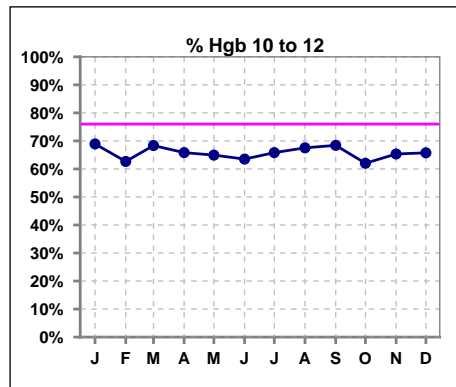
	Jan	Feb	Mar	Apr	May	Jun	Jul	Aug	Sep	Oct	Nov	Dec
# Hgb	74	75	79	79	77	74	79	77	76	79	75	73
# Hgb < 10	19	28	19	23	19	25	21	17	20	29	24	23
Pop. Mean	10.5	10.3	10.4	10.4	10.6	10.2	10.5	10.6	10.4	10.1	10.3	10.4
Std. Deviation	1.0	1.0	1.1	1.2	1.3	1.1	1.1	1.3	1.1	1.1	1.0	1.0
% Hgb < 10	26%	37%	24%	29%	25%	34%	27%	22%	26%	37%	32%	32%

Note: Excludes patients who received no ESA in month.



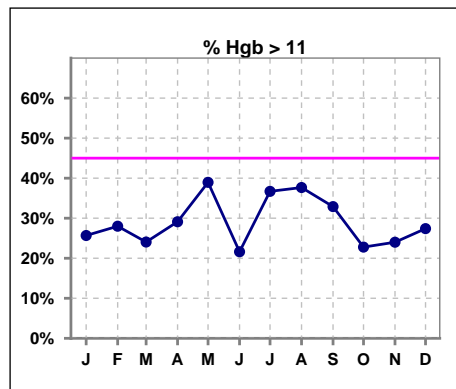
	Jan	Feb	Mar	Apr	May	Jun	Jul	Aug	Sep	Oct	Nov	Dec
# Hgb	74	75	79	79	77	74	79	77	76	79	75	73
# Hgb 10 to 12	51	47	54	52	50	47	52	52	52	49	49	48
Pop. Mean	10.5	10.3	10.4	10.4	10.6	10.2	10.5	10.6	10.4	10.1	10.3	10.4
Std. Deviation	1.0	1.0	1.1	1.2	1.3	1.1	1.1	1.3	1.1	1.1	1.0	1.0
% Hgb 10 to 12	69%	63%	68%	66%	65%	64%	66%	68%	68%	62%	65%	66%

Note: Excludes patients who received no ESA in month.



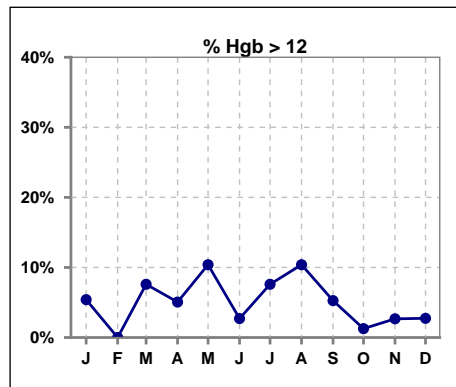
	Jan	Feb	Mar	Apr	May	Jun	Jul	Aug	Sep	Oct	Nov	Dec
# Hgb	74	75	79	79	77	74	79	77	76	79	75	73
# Hgb > 11	19	21	19	23	30	16	29	29	25	18	18	20
Pop. Mean	10.5	10.3	10.4	10.4	10.6	10.2	10.5	10.6	10.4	10.1	10.3	10.4
Std. Deviation	1.0	1.0	1.1	1.2	1.3	1.1	1.1	1.3	1.1	1.1	1.0	1.0
% Hgb > 11	26%	28%	24%	29%	39%	22%	37%	38%	33%	23%	24%	27%

Note: Excludes patients who received no ESA in month.



	Jan	Feb	Mar	Apr	May	Jun	Jul	Aug	Sep	Oct	Nov	Dec
# Hgb	74	75	79	79	77	74	79	77	76	79	75	73
# Hgb > 12	4	0	6	4	8	2	6	8	4	1	2	2
Pop. Mean	10.5	10.3	10.4	10.4	10.6	10.2	10.5	10.6	10.4	10.1	10.3	10.4
Std. Deviation	1.0	1.0	1.1	1.2	1.3	1.1	1.1	1.3	1.1	1.1	1.0	1.0
% Hgb > 12	5%	0%	8%	5%	10%	3%	8%	10%	5%	1%	3%	3%

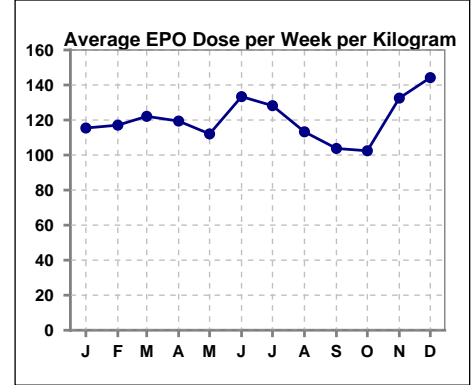
Note: Excludes patients who received no ESA in month.



V. ANEMIA - CONT.

Average EPO Dose per Week per Kilogram

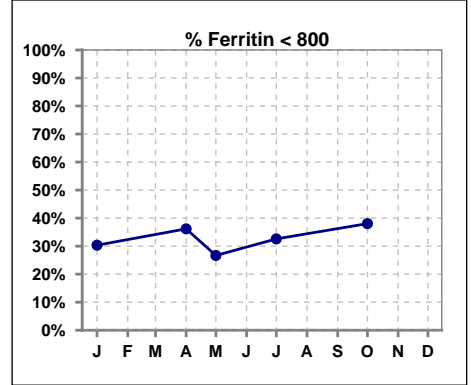
	Jan	Feb	Mar	Apr	May	Jun	Jul	Aug	Sep	Oct	Nov	Dec
# Average EPO	115.4	117.1	122.1	119.4	112.1	133.4	128.2	113.3	103.8	102.4	132.5	144.2



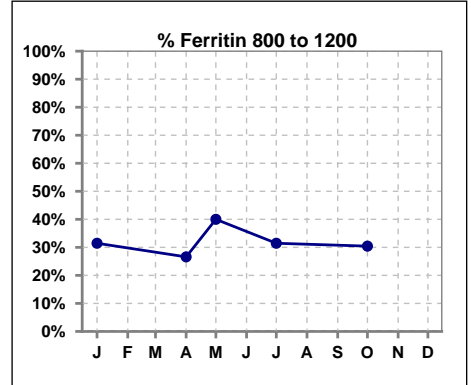
V. ANEMIA - CONT.

Iron Profile

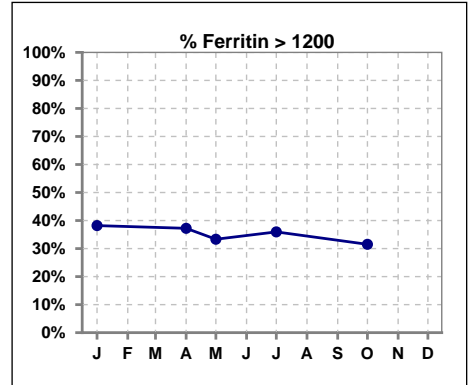
	Jan	Feb	Mar	Apr	May	Jun	Jul	Aug	Sep	Oct	Nov	Dec
# Ferritin	89			94	15		89			92		
# Ferritin < 800	27			34	4		29			35		
Pop. Mean	1046			1032	976		1034			981		
Std. Deviation	495			509	410		666			567		
% Ferritin < 800	30%			36%	27%		33%			38%		



	Jan	Feb	Mar	Apr	May	Jun	Jul	Aug	Sep	Oct	Nov	Dec
# Ferritin	89			94	15		89			92		
# Ferritin 800 to 1200	28			25	6		28			28		
Pop. Mean	1046			1032	976		1034			981		
Std. Deviation	495			509	410		666			567		
% Ferritin 800 to 1200	31%			27%	40%		31%			30%		

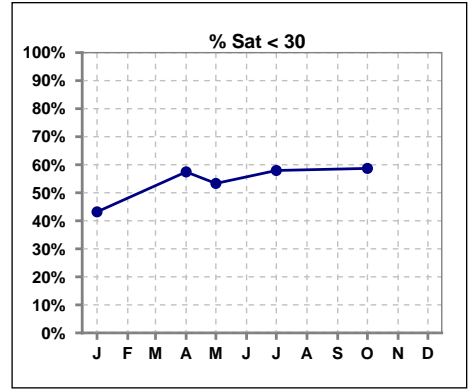


	Jan	Feb	Mar	Apr	May	Jun	Jul	Aug	Sep	Oct	Nov	Dec
# Ferritin	89			94	15		89			92		
# Ferritin > 1200	34			35	5		32			29		
Pop. Mean	1046			1032	976		1034			981		
Std. Deviation	495			509	410		666			567		
% Ferritin > 1200	38%			37%	33%		36%			32%		

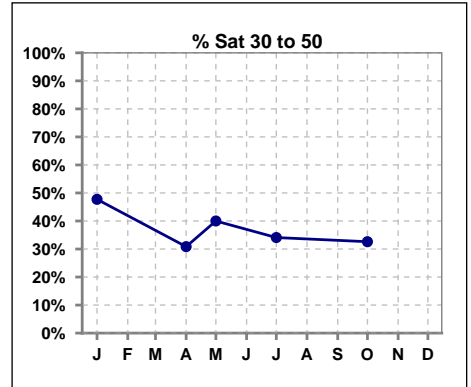


V. ANEMIA - CONT.

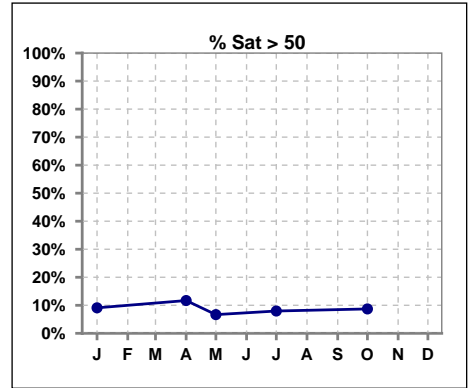
	Jan	Feb	Mar	Apr	May	Jun	Jul	Aug	Sep	Oct	Nov	Dec
# % Sat	88			94	15		88			92		
# % Sat < 30	38			54	8		51			54		
Pop. Mean	34			31	27		29			31		
Std. Deviation	15			19	11		14			16		
%% Sat < 30	43%			57%	53%		58%			59%		



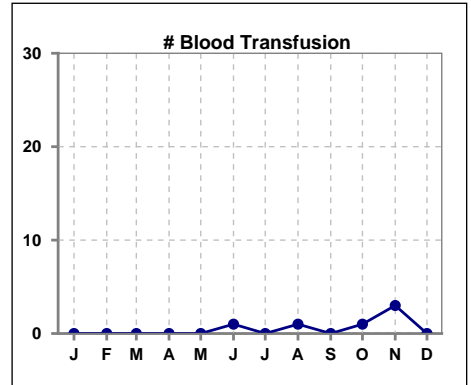
	Jan	Feb	Mar	Apr	May	Jun	Jul	Aug	Sep	Oct	Nov	Dec
# % Sat	88			94	15		88			92		
# % Sat 30 to 50	42			29	6		30			30		
Pop. Mean	34			31	27		29			31		
Std. Deviation	15			19	11		14			16		
%% Sat 30 to 50	48%			31%	40%		34%			33%		



	Jan	Feb	Mar	Apr	May	Jun	Jul	Aug	Sep	Oct	Nov	Dec
# % Sat	88			94	15		88			92		
# % Sat > 50	8			11	1		7			8		
Pop. Mean	34			31	27		29			31		
Std. Deviation	15			19	11		14			16		
%% Sat > 50	9%			12%	7%		8%			9%		



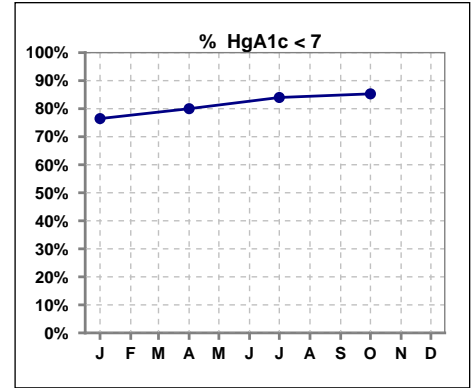
	Jan	Feb	Mar	Apr	May	Jun	Jul	Aug	Sep	Oct	Nov	Dec
# Patient	92	93	94	94	91	93	91	91	91	94	92	88
# Blood Transfusion	0	0	0	0	0	1	0	1	0	1	3	0



Methodology: a) All labs for 'Adequacy of Dialysis', 'Nutrition', 'Osteodystrophy', 'Anemia' and 'Diabetes' based on last value of month; b) BP's and #L processed are average of all values for month; c) Access data takes last access of month; d) Values for SGA and 'Infection Control' use most recent result.

VI. Diabetes

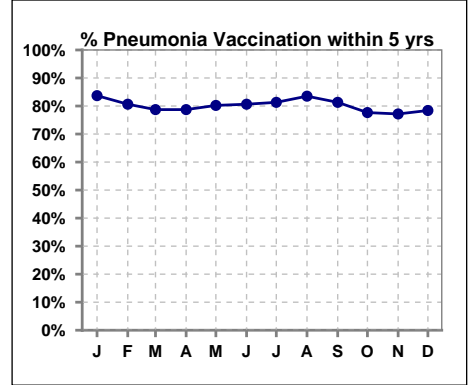
	Jan	Feb	Mar	Apr	May	Jun	Jul	Aug	Sep	Oct	Nov	Dec
# HgA1c	34			30			25			34		
# HgA1c < 7	26			24			21			29		
Pop. Mean	6.4			6.2			5.9			5.9		
Std. Deviation	1.25			1.47			1.26			1.25		
% HgA1c < 7	76%			80%			84%			85%		



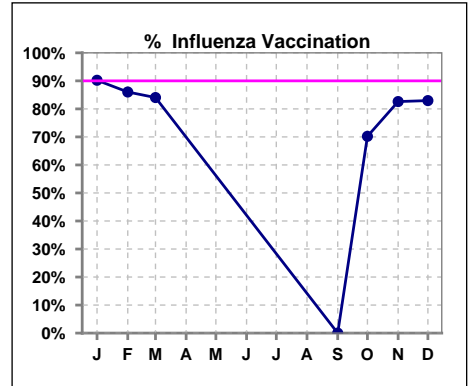
VII. Infection Control

Pneumonia vaccination within the past five years

	Jan	Feb	Mar	Apr	May	Jun	Jul	Aug	Sep	Oct	Nov	Dec
# Patient	92	93	94	94	91	93	91	91	91	94	92	88
# Pneumonia	77	75	74	74	73	75	74	76	74	73	71	69
% Pneumonia	84%	81%	79%	79%	80%	81%	81%	84%	81%	78%	77%	78%



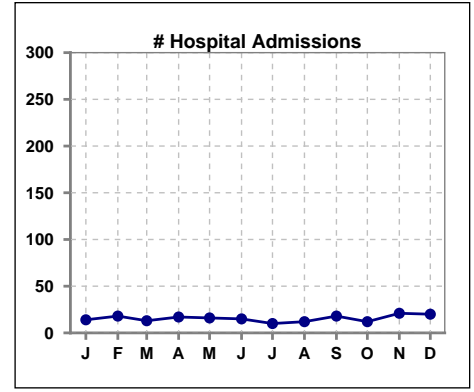
	Jan	Feb	Mar	Apr	May	Jun	Jul	Aug	Sep	Oct	Nov	Dec
# Patient	92	93	94						91	94	92	88
# Influenza	83	80	79						0	66	76	73
% Influenza	90%	86%	84%						0%	70%	83%	83%



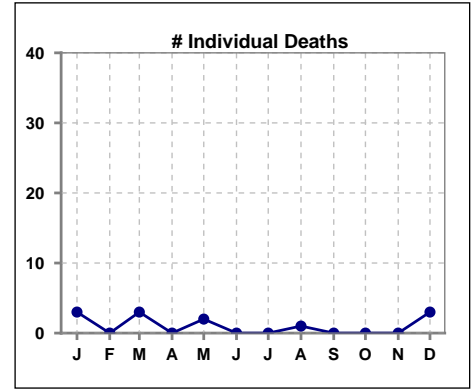
Methodology: a) All labs for 'Adequacy of Dialysis', 'Nutrition', 'Osteodystrophy', 'Anemia' and 'Diabetes' based on last value of month; b) BP's and #L processed are average of all values for month; c) Access data takes last access of month; d) Values for SGA and 'Infection Control' use most recent result.

VIII. Misc

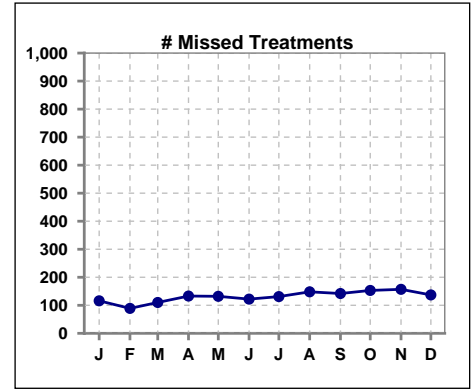
	Jan	Feb	Mar	Apr	May	Jun	Jul	Aug	Sep	Oct	Nov	Dec
# Patient	92	93	94	94	91	93	91	91	91	94	92	88
# Hospital Admissions	14	18	13	17	16	15	10	12	18	12	21	20



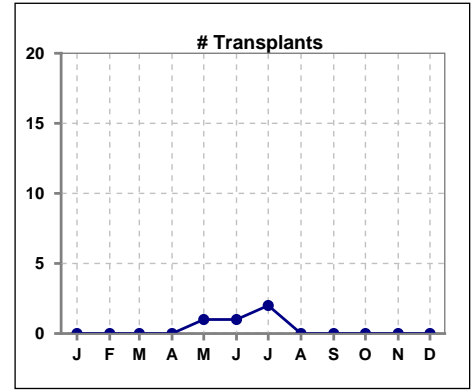
	Jan	Feb	Mar	Apr	May	Jun	Jul	Aug	Sep	Oct	Nov	Dec
# Patient	92	93	94	94	91	93	91	91	91	94	92	88
# Individual Deaths	3	0	3	0	2	0	0	1	0	0	0	3



	Jan	Feb	Mar	Apr	May	Jun	Jul	Aug	Sep	Oct	Nov	Dec
# Patient	92	93	94	94	91	93	91	91	91	94	92	88
# Missed Treatments	116	89	110	133	132	122	131	148	142	153	157	137



	Jan	Feb	Mar	Apr	May	Jun	Jul	Aug	Sep	Oct	Nov	Dec
# Patient	92	93	94	94	91	93	91	91	91	94	92	88
# Transplants	0	0	0	0	1	1	2	0	0	0	0	0



Methodology: a) All labs for 'Adequacy of Dialysis', 'Nutrition', 'Osteodystrophy', 'Anemia' and 'Diabetes' based on last value of month; b) BP's and #L processed are average of all values for month; c) Access data takes last access of month; d) Values for SGA and 'Infection Control' use most recent result.